



May 26, 2008

Volume 1, Issue 4

Coming up:

- May 28 *City Council/RDA special meeting, 7 p.m., Carnegie Forum.*
- May 31 *Lodi Lake Youth Fishing Derby, 8 a.m. to noon*
- June 3 *San Joaquin Council of Governments, Blueprint 2050 workshop, 6:30 p.m. to 8:30 p.m., Lodi Public Library, 201 W. Locust St.*
- June 4 *City Council meeting, 7 p.m., Carnegie Forum.*
- June 18 *City Council meeting, 7 p.m., Carnegie Forum.*

Celebrate July 4 at Lodi Lake Park:

- 1,551-shell fireworks show, highlighted by 312-shell finale.
- FREE park admission.
- Gates open at 7 a.m.
- Beach area and boat rentals available for fee after 10 a.m.
- Turner Road closes between Mills Avenue and Ham Lane beginning at 6 a.m., except for permit and handicapped parking.
- No alcohol, bicycles, skateboards, fishing equipment, pets or glass bottles.
- Park reopens at noon July 5.

Have a say in city's growth plan

Now that Lodi's General Plan Update team has come up with three sketches depicting future growth scenarios, we'd like to hear what you think of the alternatives.

The "sketch plans" were unveiled to the public at an open house May 10 at Hutchins Street Square. Attendees filled out comment cards that the General Plan team will consider in developing final alternatives for consideration by the Lodi City Council.

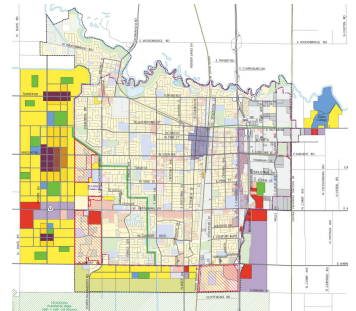
Lodi's General Plan, which outlines how and where the city will grow, has not been updated since 1991.

Even if you did not attend the open house, you still

have an opportunity to weigh in before the General Plan team revises the sketch plans to create alternatives that reflect the consensus of the Lodi community.

Visit the City of Lodi's web site at www.lodi.gov, and click on the text on the right side of the screen under the label "General Plan." Once there, you'll be able to click on each of the three original sketch plans, or download a report that includes the three alternatives plus other details.

Additionally, visitors to the web site will soon be able to fill in a form similar to the comment cards provided at the open house. Those forms, when submitted, will be forwarded to the



One of the General Plan update alternatives available for viewing at www.lodi.gov.

General Plan Update team. Comments will be considered in developing new alternatives that should be available for viewing and comment late this year. The City Council is tentatively scheduled to select a plan in spring 2009.

Redevelopment public hearing on Wednesday

A plan to boost the quality of life for east Lodi residents and improve the community's economic vitality is scheduled for a public hearing at 7 p.m. Wednesday, May 28.

During a special City Council meeting, in which the council acts jointly as the Lodi Redevelopment Agency, members of the public will have an opportunity to voice their views on the proposed Lodi Commu-



The Lodi Community Improvement Project aims to improve the infrastructure in most of Lodi east of Sacramento Street.

nity Improvement Project.

The plan strips the Redevelopment Agency of eminent domain powers, ensuring that the only property deals within the project area

occur between willing sellers and buyers.

Additionally, the project would not increase taxes, but ensure that a greater share of property taxes within the project area remain in the community for reinvestment.

A report to the City Council, which outlines why economic and physical conditions in most of east Lodi qualify the area for a redevelopment project, is available on the city's web page, www.lodi.gov.



Lodi joins long-term geothermal deal

Lodi's electrical power profile is now a shade greener.

The Northern California Power Agency, which purchases electricity for a variety of municipal utilities, agreed to purchase 25 megawatts to 32 megawatts of geothermal power — electricity generated by harnessing heat beneath

the earth's surface — from GeoPower Inc., for 20 years beginning in 2010.

Lodi will receive nearly 5 percent of energy created from the project in Sonoma County, anywhere from 1.21 megawatts to 1.55 megawatts, or about 2 percent of the city's annual energy needs.

The project overall will offset approximately 4

billion pounds of CO₂ compared to even the cleanest natural gas-fired plant over the life of the contract.

The Geysers field is the largest producer of geothermal electricity in the world. Commercial geothermal power has been generated continuously at The Geysers field since 1960.

County "Blueprint" road show arrives June 3 in Lodi

A series of community workshops designed to give residents an opportunity to describe their view of San Joaquin County in the year 2050 comes to Lodi on June 3.

The San Joaquin Council of Governments last week began a second round of

"Blueprint" public outreach and community workshops. The goal is to provide a forum for residents to describe what they'd like the region to look like in 2050. Where are parks needed? Roads and highways, shopping centers? How about the environment, the busi-

ness opportunity and housing? These workshops are designed to be fun, interactive and engaging for residents of all ages. Participants will be presented with a series of growth option scenarios to discuss, debate and decide which best fits their vision of the San Joa-

quin County region in the future. The county Blueprint is part of a regional planning process.

Lodi's Blueprint workshop is scheduled Tuesday, June 3, at the Lodi Public Library from 6:30 p.m. to 8:30 p.m.

For more information, visit www.sjcog.org.

City adopts \$43.1 million budget for FY 08-09

The Lodi City Council voted May 21 to adopt a \$43.1 million General Fund budget for the fiscal year beginning July 1, one that does not tap into the city's financial reserves.

Total city spending is estimated at \$187 million, with nearly \$107 million of that used to operate the three Lodi utilities — electricity, water and wastewater.

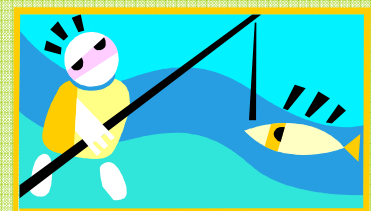
Within the General Fund, which supports government services to the public, the Police and Fire departments account for \$25.5 million in city spending.

17th annual Youth Fishing Derby Saturday at Lodi Lake Park

The 17th annual Lodi Lake Youth Fishing Derby is from 8 a.m. to noon, Saturday, May 31.

Admission is free. Children can participate in one of four age categories: 6-and-under, 7- to 9-years old, 10 to 12 and 13 to 15.

Check-in time begins at 7 a.m. Free tackle and raffle ticket are provided. The weigh-



in deadline is noon, with raffle and prizes at 12:30 p.m. Call (209) 333-6742 for more information.