



---

Comptroller of the Currency  
Administrator of National Banks

---

Washington, DC 20219

## OCC BANK DERIVATIVES REPORT SECOND QUARTER 2000

### GENERAL

The OCC quarterly report on bank [derivatives](#) activities and trading revenues is based on quarterly call report information provided by U.S. commercial banks.

The notional amount of derivatives in insured commercial bank portfolios increased by \$1.69 trillion in the second quarter, to \$39.3 trillion. Generally, changes in notional volumes are reasonable reflections of business activity but do not provide useful measures of risk. During the second quarter, the notional amount of interest rate contracts increased by \$1.3 trillion, to \$31.4 trillion. Foreign exchange contracts increased by \$348 billion to \$6.5 trillion. This figure excludes spot foreign exchange contracts, which decreased by \$107 billion to \$382 billion. Equity, commodity and other contracts rose by \$19 billion, to \$1.05 trillion. Credit derivatives increased by \$60 billion, to \$362 billion. The number of commercial banks holding derivatives increased by 27, to 416. [See Tables [1](#), [2](#), and [3](#), Graphs [1](#) and [3](#).]

Eighty percent of the notional amount of [derivative](#) positions was comprised of interest rate contracts with foreign exchange accounting for an additional sixteen percent. Equity, commodity and credit derivatives accounted for only four percent of the total notional amount. [See Table [3](#) and Graph [3](#).]

Holdings of [off-balance sheet](#) derivatives continue to be concentrated in the largest banks. Seven commercial banks account for over 95 percent of the total notional amount of derivatives in the commercial banking system, with more than 99 percent held by the top 25 banks. [See Tables [3](#), [5](#) and Graph [4](#).]

[Over-the-counter](#) (OTC) and exchange-traded contracts comprised 91 percent and 9 percent, respectively, of the notional holdings as of the second quarter of 2000. [See Table [3](#).] OTC contracts tend to be more popular with banks and bank customers because they can be tailored to meet firm-specific risk management needs. However, OTC contracts expose participants to greater credit risk and tend to be less liquid than exchange-traded contracts, which are standardized and fungible.

The notional amount of short-term contracts (i.e., with remaining maturities of less than one

year) increased by \$421 billion to \$14.3 trillion from the first quarter of 2000. Contracts with remaining maturities of one to five years rose by \$599 billion, to \$10.4 trillion, and long-term contracts (i.e., with maturities of five or more years) increased by \$533 billion, to \$5.7 trillion. Longer term contracts present valuable customer service and revenue opportunities. They also pose greater risk management challenges as longer tenor contracts are generally more difficult to hedge and result in greater counterparty credit risk. [See Tables [8](#), [9](#) and [10](#), Graphs [7](#), [8](#) and [9](#).]

## **RISK**

The notional amount is a reference amount from which contractual payments will be derived, but it is generally not an amount at risk. The risk in a [derivative](#) contract is a function of a number of variables, such as whether counterparties exchange notional principal, the volatility of the currencies or interest rates used as the basis for determining contract payments, the maturity and liquidity of contracts, and the credit worthiness of the counterparties in the transaction. Further, the degree of increase or reduction in risk taking must be considered in the context of a bank's aggregate trading positions as well as its asset and liability structure. Data describing fair values and credit risk exposures are more useful for analyzing point-in-time risk exposure, while data on trading revenues and contractual maturities provide more meaningful information on trends in risk exposure.

Table 4 contains summary data on counterparty credit exposures. The credit exposures shown are measured using the parameters contained in the [risk-based capital](#) guidelines of the U.S. banking agencies. There was a \$529 million decrease in the second quarter in total credit exposure from [off-balance sheet contracts](#), to \$418 billion. Total credit exposures for the top seven banks decreased to 247 percent of risk-based capital in the second quarter of 2000 from 254 percent in the first quarter of 2000. The decrease in the dollar amount of total credit exposure is primarily due to increasing benefits from [bilateral netting](#). Credit exposure would have been significantly higher without the benefit of bilateral netting agreements. The extent of the benefit can be seen by comparing gross positive fair values from Table [6](#) to the bilaterally-netted current exposures shown in Table [4](#). Netting reduced current credit exposures by over 65 percent in the second quarter. [See Tables [4](#) and [6](#), Graphs [5a](#) and [5b](#).]

Past-due [derivative](#) contracts remained at nominal levels. For all banks, the book value of contracts past due 30 days or more aggregated to only \$9 million or .0022 percent of total credit exposure from derivatives contracts. A more complete assessment of the magnitude of troubled derivative exposures would include restructured derivative contracts, contracts re-written as loans, and those accounted for on a non-accrual basis in addition to past due contracts. Call Report instructions, however, currently require banks to report only past due derivative contracts. Therefore, use of past-due information alone may not provide a complete picture of the extent of troubled derivative exposures.

During the second quarter of 2000 banks charged off \$794 thousand due to credit losses from off-balance sheet derivatives, or .0002 percent of the total credit exposure from derivative contracts. For comparison purposes, net loan charge-offs relative to total loans for the quarter were .28 percent. [See Graph [5c](#).]

The Call Report data reflect the significant differences in business strategies among the banks. The preponderance of trading activities, including both customer transactions and proprietary positions, is confined to the very largest banks. The banks with the 25 largest derivatives portfolios hold 96 percent of their contracts for trading purposes, primarily customer service transactions, while the remaining 4 percent are held for their own risk management needs. Trading contracts represent over 95 percent of all notional amounts in the commercial banking system. Smaller banks tend to limit their use of derivatives to risk management purposes. [See Table [5](#).]

The gross positive and gross negative fair values of derivatives portfolios are relatively balanced; that is, the value of positions in which the bank has a gain is not significantly different from the value of those positions with a loss. In fact, for derivative contracts held for trading purposes, the seven largest banks have \$397 billion in gross positive fair values and \$387 billion in gross negative fair values. Note that while gross fair value data is more useful than notional amounts in depicting meaningful market risk exposure, users must be cautioned that these figures do not include risk mitigating or risk adding transactions in cash trading accounts. Similarly, the data are reported on a legal entity basis and consequently do not reflect the effects of positions in portfolios of affiliates. [See Table [6](#).]

End-user positions, or derivatives held for risk management purposes, have aggregate gross positive fair values of \$8.5 billion, while the gross negative fair value of these contracts aggregated to \$11.4 billion. These figures are only useful in the context of a more complete analysis of each bank's asset/liability structure and risk management process. For example, these figures do not reflect the impact of off-setting positions on the balance sheet. [See Table [6](#).]

The notional amount of credit derivatives reported by insured commercial banks increased by 20 percent from first quarter levels, or \$60 billion, to \$362 billion. Notional amounts for the 21 commercially insured institutions that sold credit protection (i.e., assumed credit risk) to other parties was \$156 billion, an increase of \$23 billion from first quarter levels. The notional amount for the 16 commercial banks reporting credit derivatives that bought credit protection (i.e., hedged credit risk) from other parties was \$205 billion, a \$37 billion increase from the first quarter. [See Tables [1](#), [3](#) and Graphs [2](#), [3](#) and [4](#).]

## **REVENUES**

The Call Report data include revenue information regarding trading activities involving cash instruments and off-balance sheet [derivative](#) instruments. The data also show the impact on net interest income and non-interest income from derivatives used in non-trading activities. Note that the revenue data reported in Table [7](#), Graphs [6a](#) and [6b](#) reflect figures for the second quarter alone, and are not annualized.

Relative to the first quarter of 2000, there was a decrease in trading revenues from cash instruments and derivatives activities of \$805 million, to \$3.0 billion in the second quarter of 2000. Notwithstanding the decrease from the first quarter, the \$3.0 billion in trading revenue

was the third largest ever realized by U.S. banks. The top seven banks accounted for 84 percent of total trading revenue, compared to 86 percent in the first quarter. In the second quarter, revenues from interest rate positions decreased by \$714 million, to \$993 million, while revenues from foreign exchange positions decreased by \$2 million, to \$1.3 billion. Banks reported revenue of \$705 million from equity, commodity and other (e.g. emerging market debt) trading positions in the second quarter. [See Table [7](#), Graphs [6a](#) and [6b](#).]

[Derivatives](#) held for purposes other than trading did not have a significant effect on either net interest income or non-interest income in the second quarter. Non-traded derivatives contributed \$334 million or .29 percent to the gross revenues of banks with derivative contracts in the second quarter. These figures reflect a decrease of \$46 million from the first quarter. These results are only useful in the context of a more complete analysis of each bank's asset/liability structure and risk management process.

####

## **GLOSSARY OF TERMS**

**Bilateral Netting:** A legally enforceable arrangement between a bank and a counterparty that creates a single legal obligation covering all included individual contracts. This means that a bank's obligation, in the event of the default or insolvency of one of the parties, would be the net sum of all positive and negative fair values of contracts included in the bilateral netting arrangement.

**Derivative:** A financial contract whose value is derived from the performance of assets, interest rates, currency exchange rates, or indexes. Derivative transactions include a wide assortment of financial contracts including structured debt obligations and deposits, swaps, futures, options, caps, floors, collars, forwards and various combinations thereof.

**Exchange-Traded Derivative Contracts:** Standardized derivative contracts transacted on an organized exchange and which usually have margin requirements.

**Gross Negative Fair Value:** The sum total of the fair values of contracts where the bank owes money to its counterparties, without taking into account netting. This represents the maximum losses the bank's counterparties would incur if the bank defaults and there is no netting of contracts, and no bank collateral was held by the counterparties.

**Gross Positive Fair Value:** The sum total of the fair values of contracts where the bank is owed money by its counterparties, without taking into account netting. This represents the maximum losses a bank could incur if all its counterparties default and there is no netting of contracts, and the bank holds no counterparty collateral.

**High-Risk Mortgage Securities:** Securities where the price or expected average life is highly sensitive to interest rate changes, as determined by the FFIEC policy statement on high-risk mortgage securities. See also OCC Banking Circular 228 (rev.)

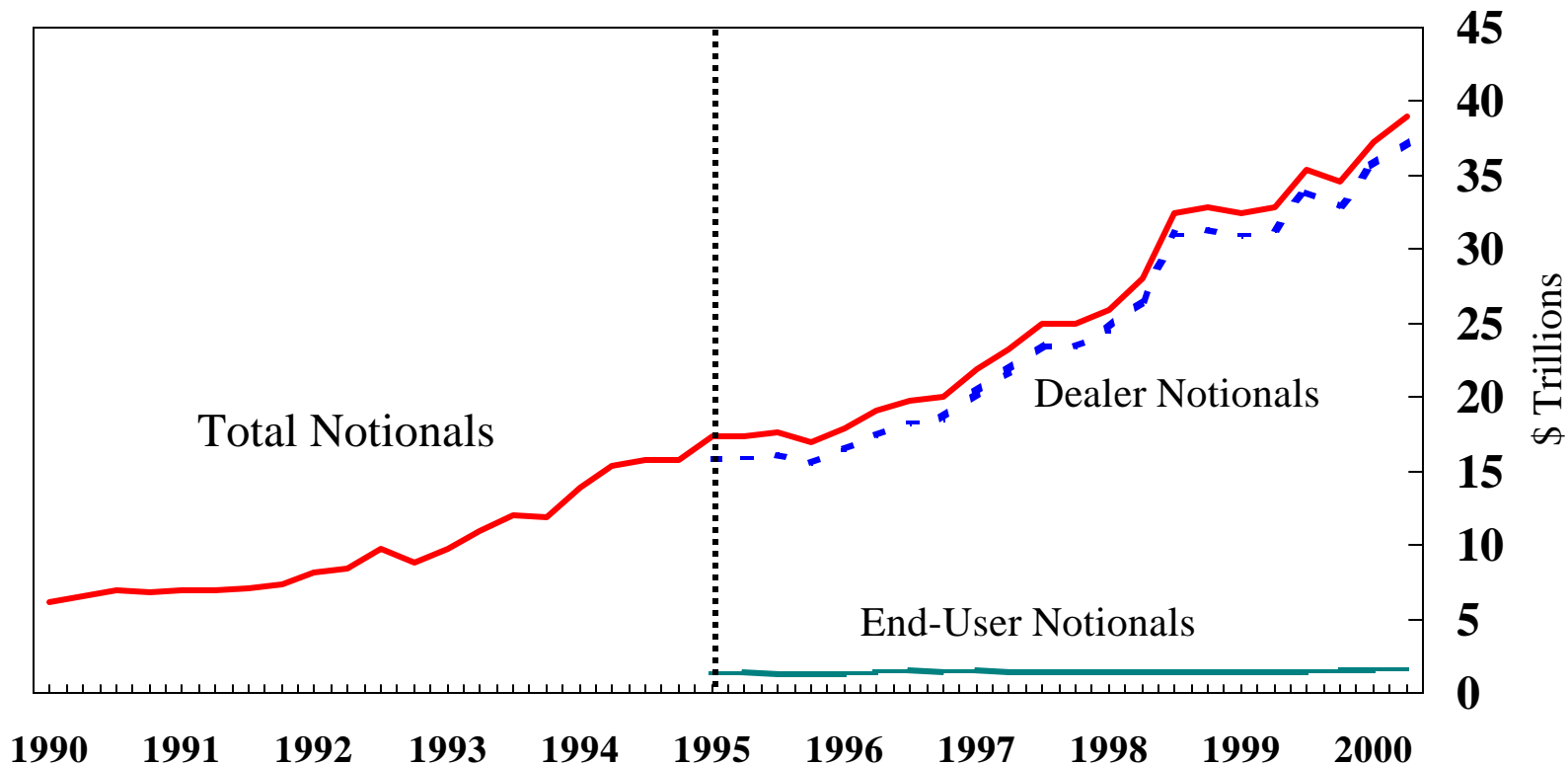
**Off-Balance Sheet Derivative Contracts:** Derivative contracts that generally do not involve booking assets or liabilities (i.e., swaps, futures, forwards, and options).

**Over-the-Counter Derivative Contracts:** Privately negotiated derivative contracts that are transacted off organized exchanges.

**Structured Notes:** Non-mortgage-backed debt securities, whose cash flow characteristics depend on one or more indices and/or have embedded forwards or options.

**Total Risk-Based Capital:** The sum of tier 1 plus tier 2 capital. Tier 1 capital consists of common shareholders equity, perpetual preferred shareholders equity with noncumulative dividends, retained earnings, and minority interests in the equity accounts of consolidated subsidiaries. Tier 2 capital consists of subordinated debt, intermediate-term preferred stock, cumulative and long-term preferred stock, and a portion of a bank's allowance for loan and lease losses.

# Derivatives, Notionals by Type of User Insured Commercial Banks



	1990				1991				1992				1993				1994				1995				1996				1997				1998				1999				2000			
Total Notionals	6.2	6.5	7.0	6.8	7.0	6.9	7.1	7.3	8.1	8.4	9.7	8.8	9.8	10.9	12.0	11.9	13.8	15.3	15.8	15.8	17.3	17.4	17.6	16.9	17.8	19.0	19.8	20.0	21.9	23.3	25.0	25.0	26.0	28.0	32.8	32.9	32.8	32.8	35.4	34.5	37.3	39.0		
Dealer Notionals																					15.9	15.9	16.7	15.6	16.5	17.5	18.7	18.5	20.3	21.8	23.5	23.5	24.5	26.6	31.0	31.4	31.0	31.3	33.9	33.0	35.7	37.3		
End-User Notionals																					1.4	1.5	1.4	1.3	1.3	1.5	1.6	1.5	1.5	1.5	1.5	1.5	1.4	1.4	1.5	1.4	1.4	1.5	1.5	1.6	1.6	1.7		

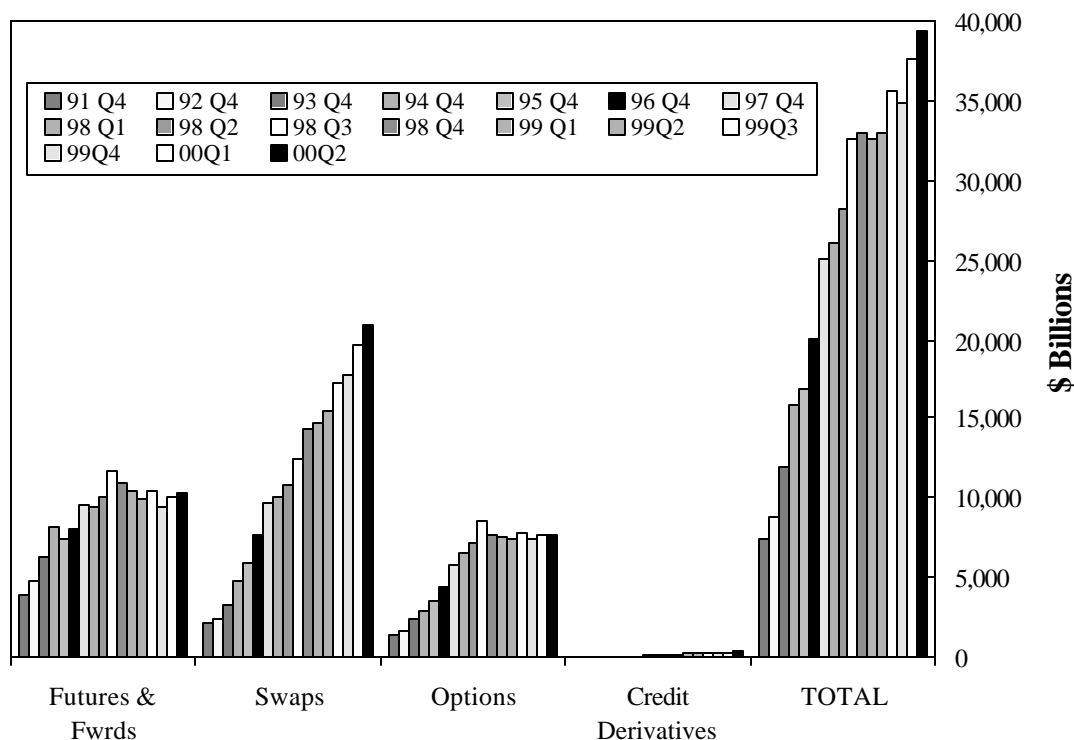
Note: Dotted line indicates that beginning in 1Q95, spot foreign exchange was not included in the definition of total derivatives.

Note: Categories do not include credit derivatives.

Note: Numbers may not add due to rounding.

## Derivative Contracts by Product

### All Commercial Banks, Second Quarter 2000



### Derivative Contracts by Product (\$ Billions)\*

	91 Q4	92 Q4	93 Q4	94 Q4	95 Q4	96 Q4	97 Q4	98 Q1	98 Q2	98 Q3	98 Q4	99 Q1	99 Q2	99 Q3	99 Q4	00 Q1	00 Q2
	\$	\$	\$	\$	\$	\$	\$	\$	\$	\$	\$	\$	\$	\$	\$	\$	\$
<b>Futures &amp; Fwrds</b>	3,876	4,780	6,229	8,109	7,399	8,041	9,550	9,379	10,003	11,644	10,918	10,358	9,918	10,356	9,390	9,993	10,327
<b>Swaps</b>	2,071	2,417	3,260	4,823	5,945	7,601	9,705	10,060	10,846	12,369	14,345	14,610	15,419	17,355	17,779	19,666	20,957
<b>Options</b>	1,393	1,568	2,384	2,841	3,516	4,393	5,754	6,518	7,197	8,467	7,592	7,503	7,456	7,712	7,361	7,672	7,679
<b>Credit Derivatives</b>							55	91	129	162	144	191	210	234	287	302	362
<b>TOTAL</b>	7,339	8,764	11,873	15,774	16,861	20,035	25,064	26,049	28,176	32,641	32,999	32,662	33,003	35,658	34,817	37,632	39,325

\*In billions of dollars; notional amount of futures, total exchange traded options, total over the counter options, total forwards, and total swaps. Note that data after 1994 do not include spot fx in the total notional amount of derivatives.

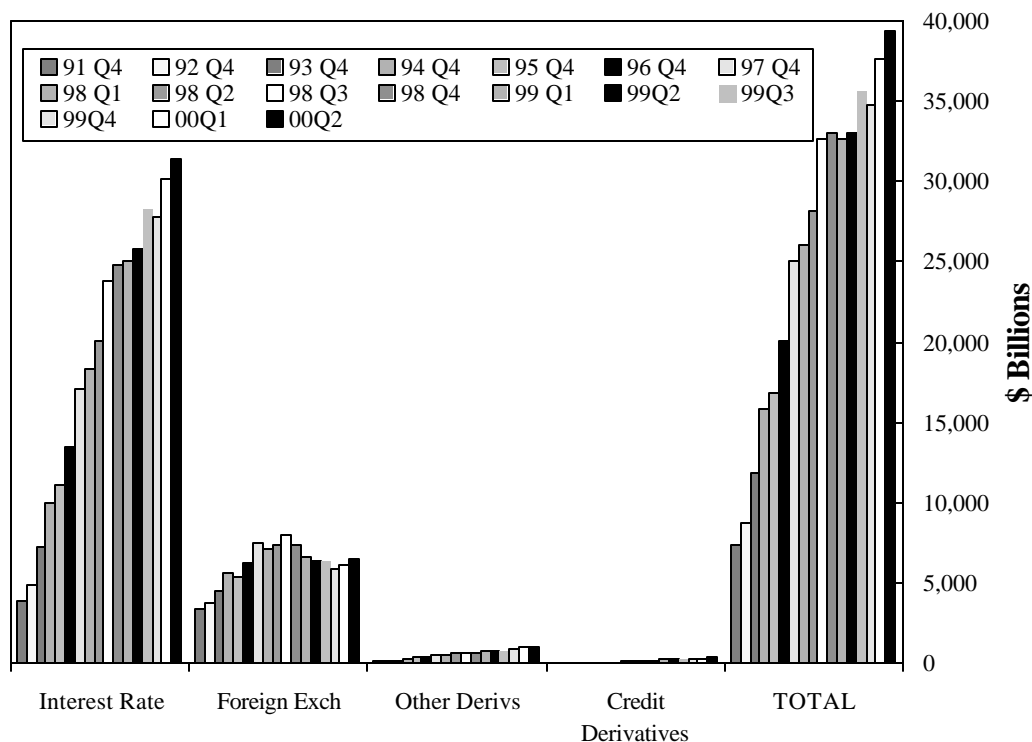
Credit derivatives were reported for the first time in the first quarter of 1997. Currently, the Call Report does not differentiate credit derivatives by product and thus they have been added as a separate category. As of 1997, credit derivatives have been included in the sum of total derivatives in this chart.

Note: numbers may not add due to rounding.

Data Source: Call Reports

## Derivative Contracts by Type

### All Commercial Banks, Second Quarter 2000



### Derivative Contracts by Type (\$ Billions)\*

	91 Q4	92 Q4	93 Q4	94 Q4	95 Q4	96 Q4	97 Q4	98 Q1	98 Q2	98 Q3	98 Q4	99 Q1	99 Q2	99 Q3	99 Q4	00 Q1	00 Q2
	\$	\$	\$	\$	\$	\$	\$	\$	\$	\$	\$	\$	\$	\$	\$	\$	\$
<b>Interest Rate</b>	3.837	4.872	7.210	9.926	11.095	13.427	17.085	18.361	20.053	23.839	24.785	25.077	25.732	28.234	27.772	30.161	31.428
<b>Foreign Exch</b>	3.394	3.789	4.484	5.605	5.387	6.241	7.430	7.068	7.389	7.955	7.386	6.654	6.306	6.383	5.915	6.141	6.489
<b>Other Derivs</b>	109	102	179	243	378	367	494	529	605	685	684	740	754	807	843	1,028	1,047
<b>Credit Derivatives</b>							55	91	129	162	144	191	210	234	287	302	362
<b>TOTAL</b>	7.340	8.763	11.873	15.774	16.861	20.035	25.064	26.049	28.176	32.641	32.999	32.662	33.003	35.658	34.817	37.632	39.325

\*In billions of dollars; notional amount of futures, total exchange traded options, total over the counter options, total forwards, and total swaps. Note that data after 1994 do not include spot fx in the total notional amount of derivatives.

Credit derivatives were reported for the first time in the first quarter of 1997. Currently, the Call Report does not differentiate credit derivatives by product and thus they have been added as a separate category. As of 1997, credit derivatives have been included in the sum of total derivatives in this chart.

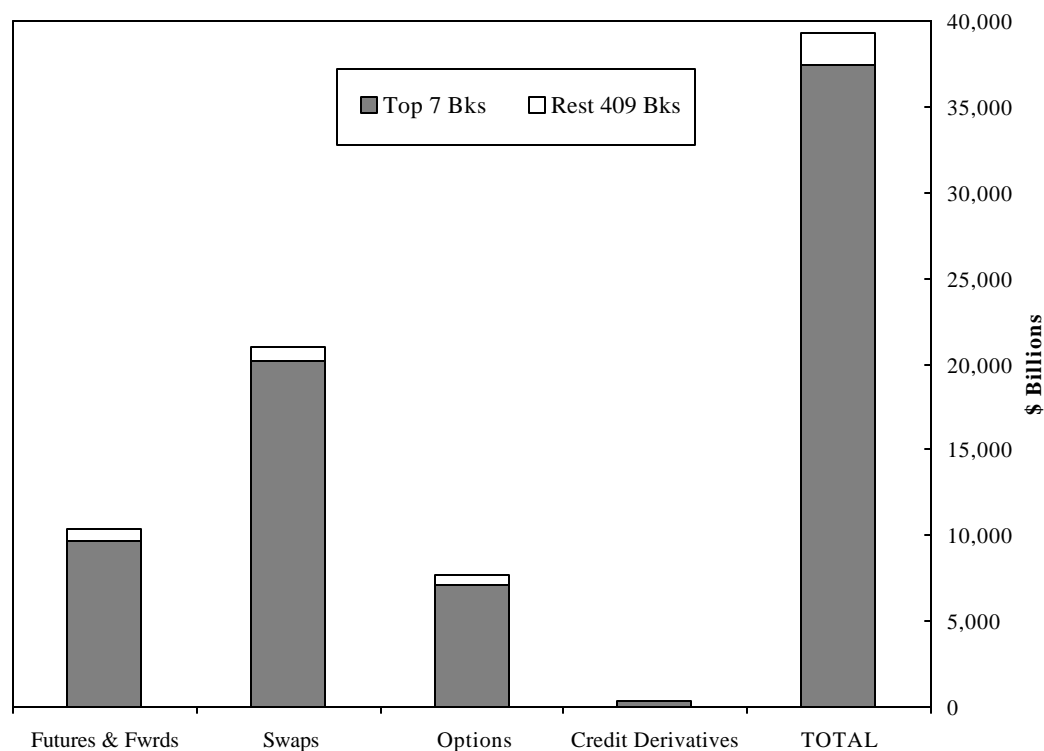
Note: numbers may not add due to rounding.

Data Source: Call Reports



## Seven Banks With Most Derivatives Dominate

All Commercial Banks, Second Quarter 2000



### Concentration of Derivative Contracts, 00Q2 (\$ Billions)\*

	\$ Top 7 Bks	% Tot Derivs	\$ Rest 409 Bks	% Tot Derivs	\$ All 416 Bks	% Tot Derivs
<b>Futures &amp; Fwrds</b>	9.725	24.7	603	1.5	10.327	26.3
<b>Swaps</b>	20.186	51.3	771	2.0	20.957	53.3
<b>Options</b>	7.127	18.1	552	1.4	7.679	19.5
<b>Credit Derivatives</b>	353	0.9	9	0.0	362	0.9
<b>TOTAL</b>	37.391	95.1	1.935	4.9	39.325	100.0

\*In billions of dollars; notional amount of futures, total exchange traded options, total over the counter options, total forwards, and total swaps. Note that data after 1994 do not include spot fx in the total notional amount of derivatives.

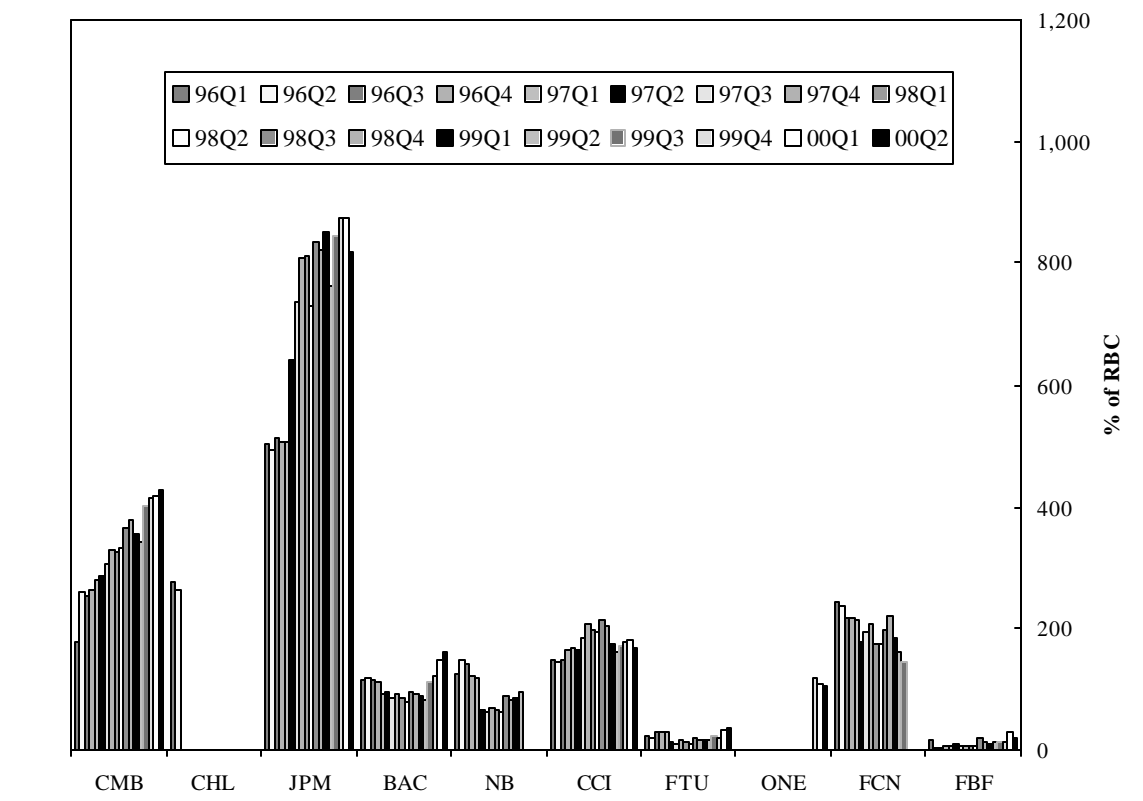
Credit derivatives were reported for the first time in the first quarter of 1997. Currently, the Call Report does not differentiate credit derivatives by product and thus they have been added as a separate category.

Note: numbers may not add due to rounding.

Data Source: Call Reports

# Percentage of Credit Exposure to Risk Based Capital

\*Top 7 Commercial Banks with Derivatives, Second Quarter 2000



## Credit Exposure to Risk Based Capital (top banks 00Q2) (%)\*

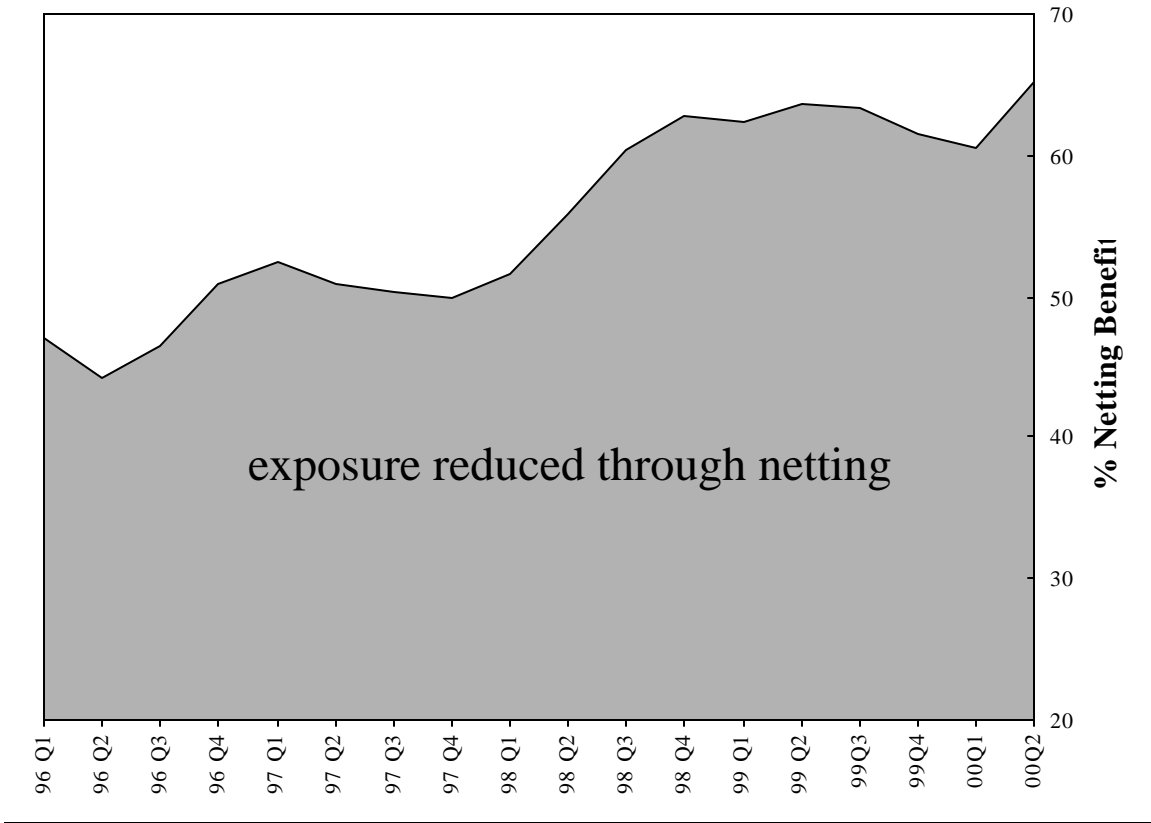
	96Q1	96Q2	96Q3	96Q4	97Q1	97Q2	97Q3	97Q4	98Q1	98Q2	98Q3	98Q4	99Q1	99Q2	99Q3	99Q4	00Q1	00Q2
Chase Man. Bk (CMB)	175.8	262.5	255.9	265.8	280.6	288.3	308.2	329.5	325.7	334.3	367.5	380.3	356.7	344.7	402.6	416.0	419.5	428.6
Chemical (CHL)	278.7	264.8																
Morgan Grnty (JPM)	502.5	493.9	512.7	507.7	507.1	639.6	737.0	806.4	810.2	727.6	834.3	820.3	850.9	762.4	842.7	873.3	872.9	817.6
Bk of America (BAC)	114.2	118.5	114.2	112.0	92.8	93.9	83.5	92.2	83.6	77.4	93.5	90.3	86.7	80.9	110.6	119.8	146.3	158.9
NationsBank (NB)	124.3	145.9	140.3	120.1	118.4	64.2	61.8	68.2	66.5	60.9	89.7	80.8	83.6	96.0				
Citibank (CCI)	147.7	145.3	147.4	162.1	165.4	165.0	184.3	204.9	196.1	193.7	213.1	202.5	174.5	160.8	169.6	176.3	180.6	165.7
First Union (FTU)	21.6	20.9	30.0	30.3	30.9	11.5	11.0	16.3	13.7	11.2	18.0	17.5	16.0	17.7	23.7	20.5	33.3	35.4
Banc One (ONE)	244.0	239.7	214.6	215.5	211.7	177.7	192.9	206.5	173.4	172.1	196.1	219.5	181.8	159.7	143.5	116.6	106.6	105.7
Fleet (FBF)	15.1	4.9	4.6	8.0	7.7	10.1	7.9	7.9	7.0	7.3	20.4	13.7	11.0	12.0	12.1	14.1	27.9	18.2
Avg % (Top Bks)	284.0	297.0	254.0	251.0	253.0	257.0	281.0	310.0	296.0	277.0	318.0	323.8	308.5	294.0	271.9	264.0	254.4	247.2
Avg % (All Bks)	6.2	6.5	6.1	6.4	5.9	6.2	6.4	7.4	6.9	6.4	7.9	7.7	7.1	6.9	6.7	6.9	7.1	6.4

\*Note: The third quarter 1996 Call Report reflected the merger between Chase and Chemical banks. The third quarter 1999 Call Report reflected the merger between Bank of America and NationsBank. Here, prior quarters are not merger-adjusted and may not be comparable. The fourth quarter 1999 Call Report reflected the merger between First Chicago and Banc One. Here, prior quarters represent First Chicago's data. The first quarter 2000 Call Report reflected the merger between Fleet and BankBoston. Here, prior quarters represent Fleet's data.

Data Source: Call Report

## Netting Benefit: Amount of Gross Exposure Eliminated Through Bilateral Netting

All Commercial Banks with Derivatives, Second Quarter 2000



Netting Benefit (%)\*

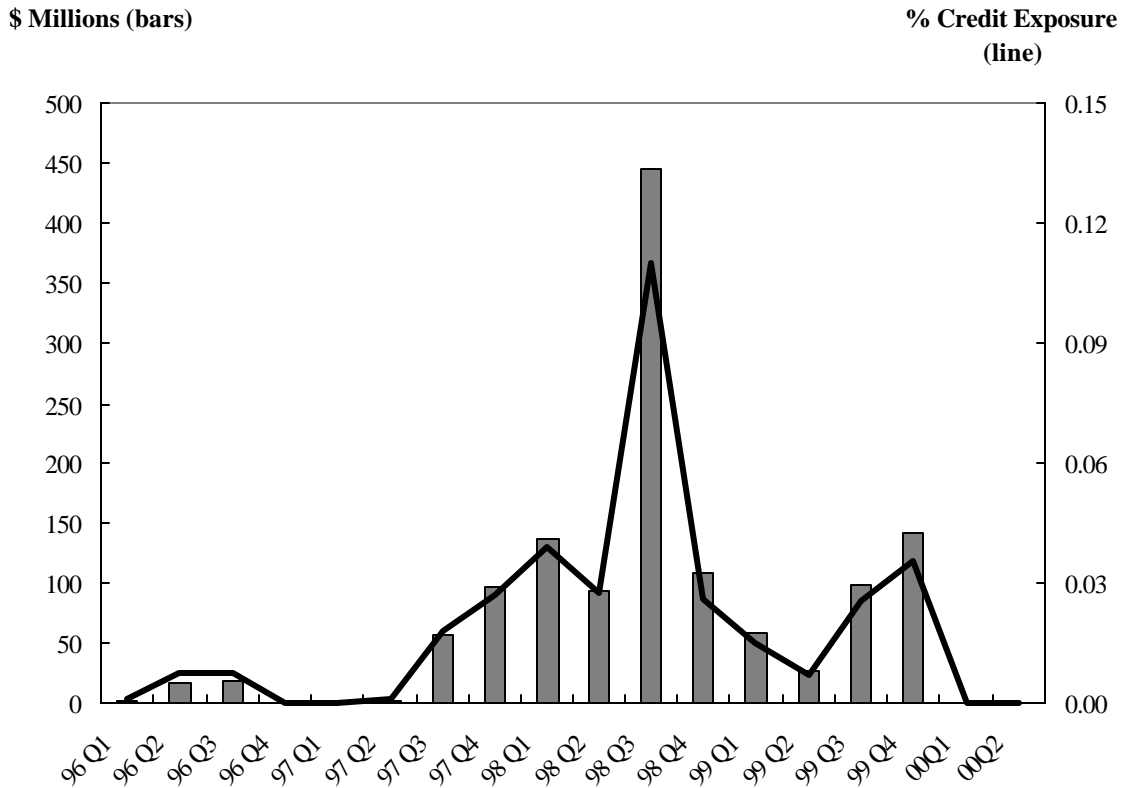
96Q1	96Q2	96Q3	96Q4	97Q1	97Q2	97Q3	97Q4	98Q1	98Q2	98Q3	98Q4	99Q1	99Q2	99Q3	99Q4	00Q1	00Q2
47.1	44.3	46.6	50.9	52.5	51.0	50.4	50.0	51.7	55.8	60.4	62.8	62.4	63.7	63.4	61.6	60.6	65.2

\*Note: The ratio of the netting benefit is defined as [1 - (bilaterally netted contracts/gross positive fair values)].

Data Source: Call Report

# Quarterly Charge-Offs (Credit Losses) From Derivatives

## All Commercial Banks with Derivatives, Second Quarter 2000



### Quarterly Charge-Offs (Credit Losses) From Derivatives (\$ Millions)

96Q1	96Q2	96Q3	96Q4	97Q1	97Q2	97Q3	97Q4	98Q1	98Q2	98Q3	98Q4	99Q1	99Q2	99Q3	99Q4	00Q1	00Q2
2.00	16.90	18.00	0.02	0.05	2.20	57.00	95.90	135.50	93.70	445.40	107.20	58.95	25.80	72.14	140.97	0.10	0.79

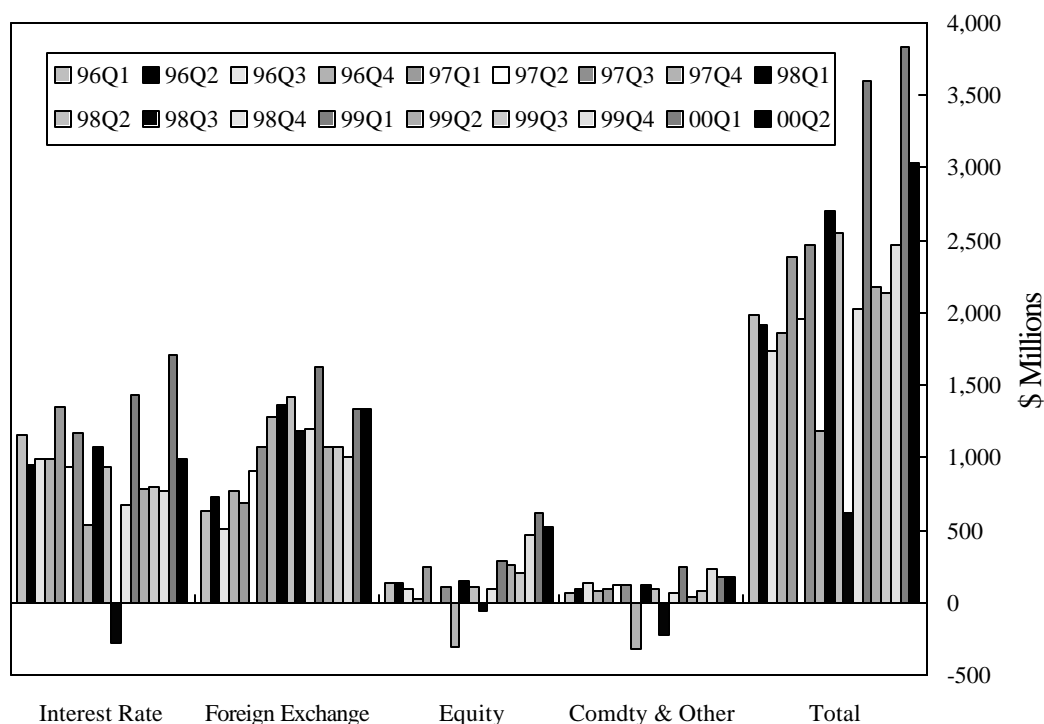
\* Note: The figures are for each quarter alone, not year-to-date.

Data Source: Call Report

# Quarterly Trading Revenue

## Cash & Off-Balance Sheet Positions

### All Commercial Banks, Second Quarter 2000



### Cash & Off-Balance Sheet Revenue (\$ Millions)\*

	96Q1	96Q2	96Q3	96Q4	97Q1	97Q2	97Q3	97Q4	98Q1	98Q2	98Q3	98Q4	99Q1	99Q2	99Q3	99Q4	00Q1	00Q2
<b>Interest Rate</b>	1159	951	990	990	1350	939	1173	534	1067	930	-284	669	1436	788	794	772	1707	993
<b>Foreign Exchange</b>	628	732	514	767	690	908	1070	1281	1363	1414	1185	1205	1624	1078	1068	1003	1338	1336
<b>Equity</b>	131	138	93	27	246	1	103	-305	148	114	-65	92	290	264	202	462	624	522
<b>Comdty &amp; Other</b>	60	95	137	82	97	115	125	-320	124	98	-222	64	245	41	73	235	170	183
<b>Tot Trading Rev*</b>	<b>1978</b>	<b>1917</b>	<b>1734</b>	<b>1866</b>	<b>2383</b>	<b>1962</b>	<b>2471</b>	<b>1190</b>	<b>2703</b>	<b>2556</b>	<b>614</b>	<b>2030</b>	<b>3595</b>	<b>2172</b>	<b>2137</b>	<b>2472</b>	<b>3839</b>	<b>3034</b>

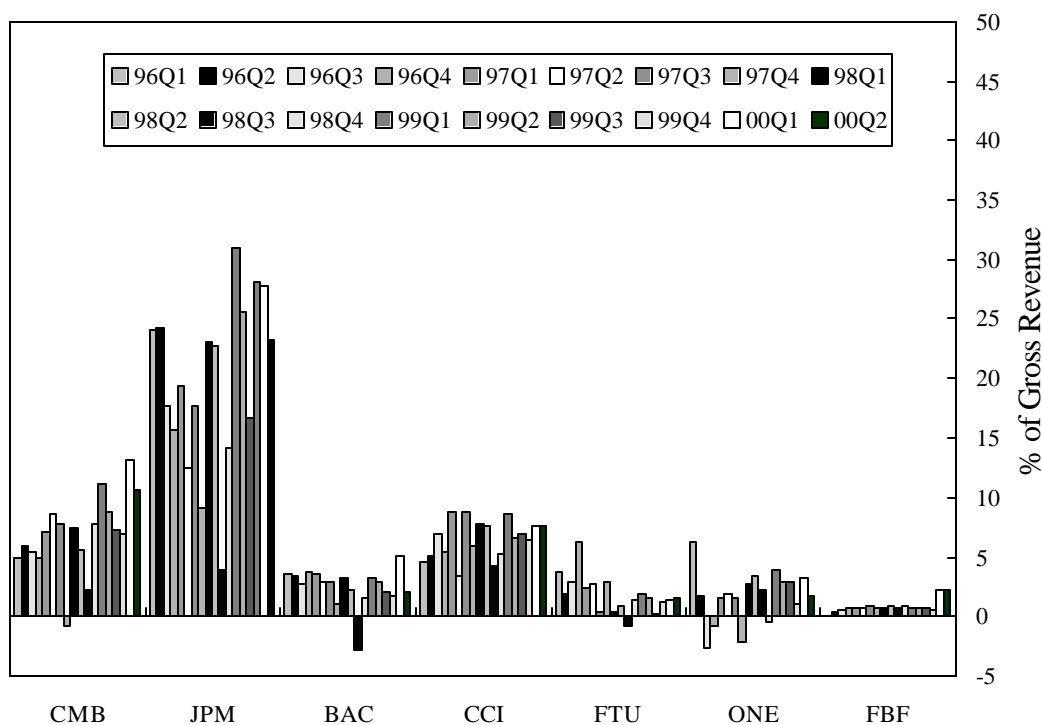
\* Note: The trading revenue figures above are for cash and off-balance sheet activities. Revenue figures are for each quarter alone, not year-to-date.

Note: Numbers may not add due to rounding.

Data Source: Call Report

## Quarterly Trading Revenue as a Percentage of Gross Revenue Cash & Off-Balance Sheet Positions

### Top Commercial Banks with Derivatives, Second Quarter 2000



Trading Revenue as a Percentage of Gross Revenue (top banks, 00Q2 ranking, ratios in %)\*

	96Q1	96Q2	96Q3	96Q4	97Q1	97Q2	97Q3	97Q4	98Q1	98Q2	98Q3	98Q4	99Q1	99Q2	99Q3	99Q4	00Q1	00Q2
Chase Man. Bk (CMB)	5.0	5.9	5.5	5.0	7.2	8.6	7.8	-0.7	7.5	5.7	2.3	7.9	11.2	8.8	7.4	6.9	13.2	10.7
J.P. Morgan (JPM)	24.1	24.2	17.7	15.7	19.4	12.6	17.7	9.1	23.0	22.7	4.0	14.3	30.9	25.5	16.8	28.0	27.8	23.1
Bank America (BAC)	3.6	3.5	2.7	3.7	3.6	2.9	2.9	1.0	3.2	2.3	-2.8	1.6	3.3	2.9	2.1	1.7	5.2	2.1
Citibank (CCI)	4.7	5.2	6.9	5.5	8.9	3.5	8.9	6.0	7.9	7.6	4.3	5.3	8.7	6.6	7.0	6.4	7.7	7.7
First Union (FTU)	3.8	2.0	3.0	6.3	2.4	2.7	0.4	2.9	0.4	0.9	-0.7	1.4	1.9	1.5	0.2	1.3	1.4	1.6
Banc One (ONE)	6.3	1.7	-2.7	-0.7	1.5	2.0	1.5	-2.1	2.7	3.5	2.2	-0.4	4.0	3.0	2.9	1.1	3.2	1.7
Fleet (FBF)	0.0	0.4	0.5	0.7	0.8	0.7	0.9	0.8	0.7	0.9	0.8	0.9	0.8	0.8	0.8	0.6	2.2	2.2
Total % (Top Banks)	7.7	7.6	6.6	6.4	8.6	5.9	7.7	2.5	7.9	6.9	0.8	5.1	9.6	5.8	5.7	5.4	8.3	6.2
Total % (All Banks)	2.6	2.5	2.3	2.4	3.0	2.4	2.8	1.3	3.0	2.7	0.7	2.1	3.7	2.2	2.1	2.3	3.5	2.7

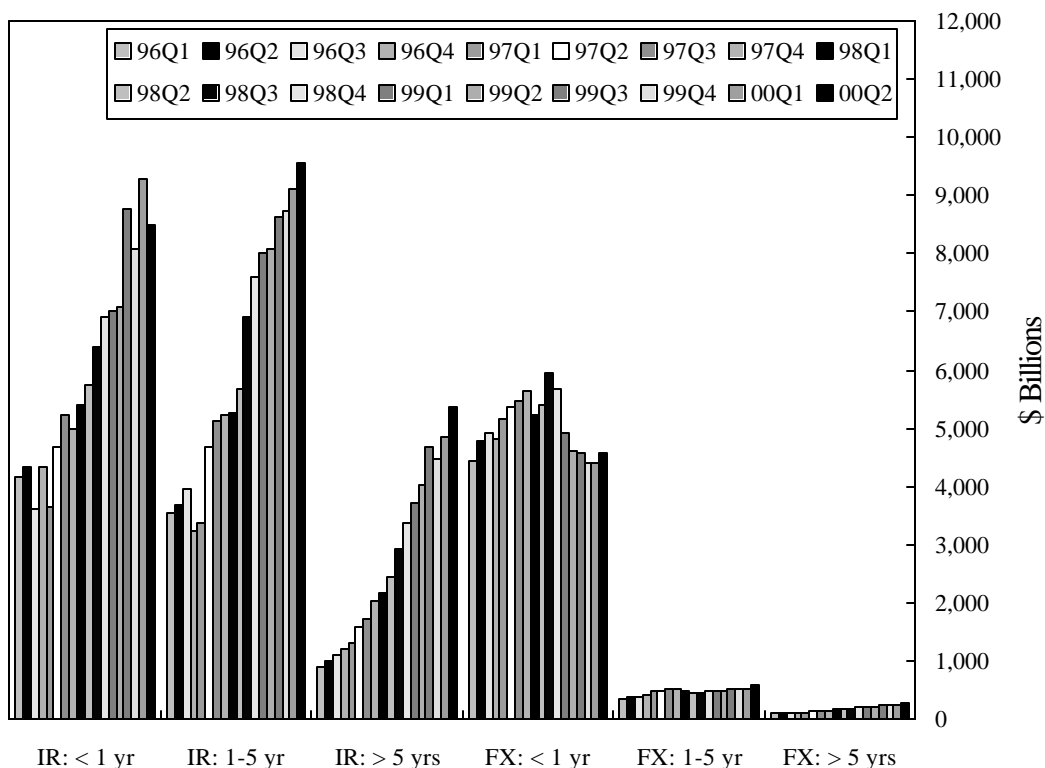
\* Note that the trading revenue figures above are for cash and off-balance sheet activities. Revenue figures are for each quarter alone, not year-to-date.

\* Note: The third quarter 1996 Call Report reflected the merger between Chase and Chemical. The third quarter 1999 Call Report reflected the merger between Bank of America and NationsBank. The fourth quarter 1999 Call Report reflected the merger between First Chicago and Banc One. Prior quarters include the sum of Chase and Chemical Banks, as well as the sum of Bank of America and NationsBank's trading figures for comparison purposes. However, prior quarters for Banc One reflect First Chicago's data. The first quarter 2000 Call Report reflected the merger between Fleet and BankBoston. Here, prior quarters represent Fleet's data.

Data Source: Call Report

# Notional Amounts for Interest Rate and Foreign Exchange Contracts by Maturity

All Commercial Banks, Second Quarter 2000



Notional Amounts: Interest Rate and Foreign Exchange Contracts by Maturity (\$ Billions)\*

	96Q1	96Q2	96Q3	96Q4	97Q1	97Q2	97Q3	97Q4	98Q1	98Q2	98Q3	98Q4	99Q1	99Q2	99Q3	99Q4	00Q1	00Q2			
IR: < 1 yr	4176	4349	3608	4339	3650	4684	5211	4974	5401	5744	6384	6923	7002	7087	8757	8077	8080	8620	8730	9107	9574
IR: 1-5 yr	3525	3687	3954	3223	3385	4691	5133	5230	5265	5673	6916	7594	8007	8080	8620	8730	9107	9574			
IR: > 5 yrs	887	986	1095	1214	1302	1565	1735	2009	2174	2439	2924	3376	3712	4012	4669	4485	4852	5352			
FX: < 1 yr	4445	4771	4902	4826	5144	5347	5483	5639	5213	5390	5959	5666	4906	4623	4575	4395	4397	4580			
FX: 1-5 yr	350	366	383	402	475	485	516	516	492	441	453	473	485	468	516	503	518	589			
FX: > 5 yrs	92	100	104	113	116	133	143	151	167	158	167	193	213	219	234	241	246	287			

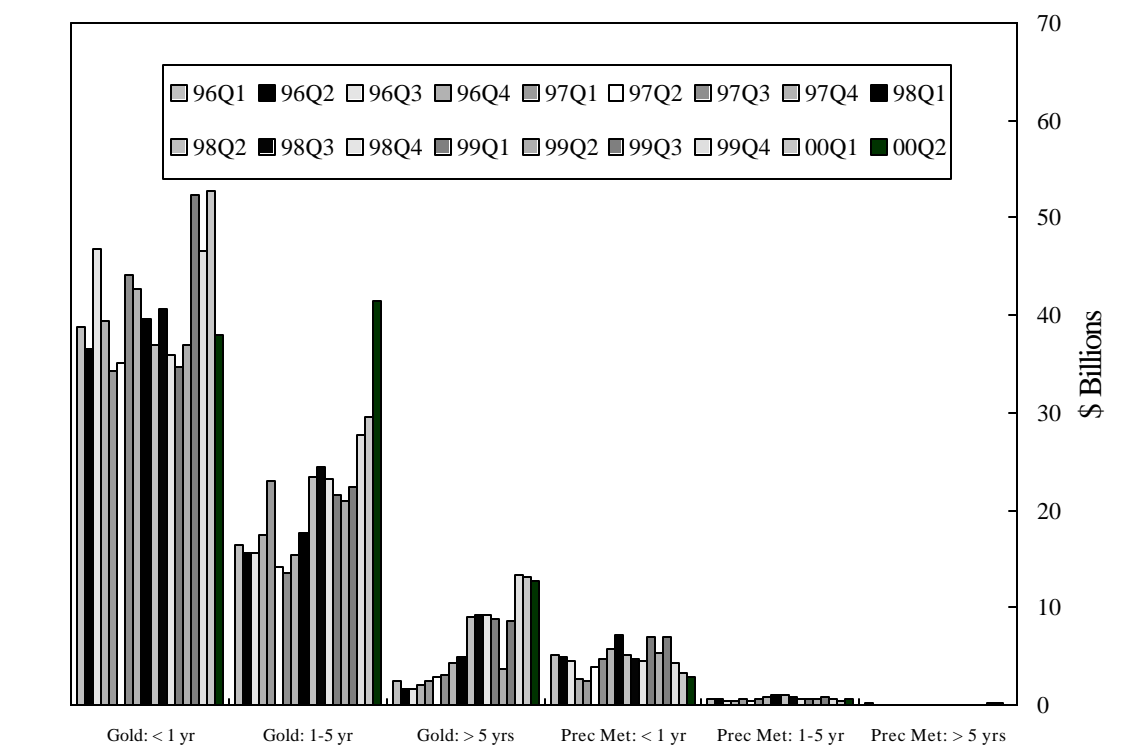
\*Note: Figures above exclude foreign exchange contracts with an original maturity of 14 days or less, futures contracts, written options, basis swaps, and any other contracts not subject to risk-based capital requirements.

\*Note: Currently, the Call Report does not include maturity breakouts for credit derivatives. Credit derivatives have been excluded here.

Data Source: Call Report

# Notional Amounts for Gold and Precious Metals Contracts by Maturity

All Commercial Banks, Second Quarter 2000



Notional Amounts: Gold and Precious Metals Contracts by Maturity (\$ Billions)\*

	96Q1	96Q2	96Q3	96Q4	97Q1	97Q2	97Q3	97Q4	98Q1	98Q2	98Q3	98Q4	99Q1	99Q2	99Q3	99Q4	00Q1	00Q2
Gold: < 1 yr	38.8	36.5	46.8	39.4	34.7	35.0	44.1	47.6	39.7	37.0	40.6	36.0	34.8	36.9	52.3	46.5	52.8	37.9
Gold: 1-5 yr	16.4	15.6	15.6	17.4	22.0	14.3	13.6	15.4	17.7	23.5	24.3	22.2	21.5	20.0	22.4	27.8	20.5	41.5
Gold: > 5 yrs	2.4	1.7	1.7	2.0	2.4	2.0	3.1	4.2	4.0	0.1	0.2	0.2	8.0	3.6	8.7	13.3	13.2	12.8
Prec Met: < 1 yr	5.1	4.8	4.5	2.6	2.6	4.0	4.7	5.7	7.1	5.1	4.7	4.6	7.0	5.4	7.0	4.4	3.3	2.9
Prec Met: 1-5 yr	0.5	0.7	0.4	0.4	0.5	0.4	0.6	0.0	1.1	0.0	0.0	0.6	0.6	0.6	0.0	0.5	0.5	0.6
Prec Met: > 5 yrs	0.1	0.0	0.0	0.0	0.0	0.0	0.0	0.0	0.0	0.0	0.0	0.0	0.0	0.0	0.0	0.2	0.2	0.0

\*Note: Figures above exclude foreign exchange contracts with an original maturity of 14 days or less, futures contracts, written options, basis swaps, and any other contracts not subject to risk-based capital requirements.

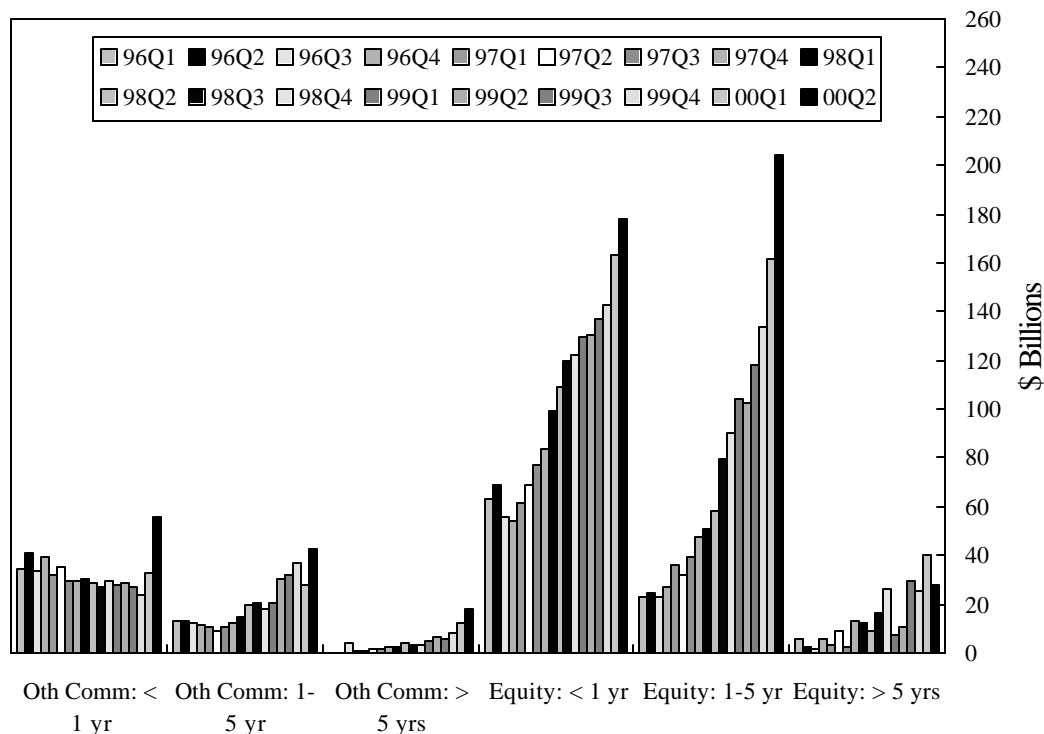
\*Note: Currently, the Call Report does not include maturity breakouts for credit derivatives. Credit derivatives have been excluded here.

Data Source: Call Report



# Notional Amounts for Commodity and Equity Contracts by Maturity

All Commercial Banks, Second Quarter 2000



Notional Amounts: Commodity and Equity Contracts by Maturity (\$ Billions)\*

	96Q1	96Q2	96Q3	96Q4	97Q1	97Q2	97Q3	97Q4	98Q1	98Q2	98Q3	98Q4	99Q1	99Q2	99Q3	99Q4	00Q1	00Q2
Oth Comm: < 1 yr	34.8	40.8	33.8	39.6	32.2	35.5	29.8	29.3	30.3	28.8	27.4	29.8	28.2	28.6	27.4	23.6	33.2	56.1
Oth Comm: 1-5 yr	12.9	12.7	11.9	11.4	11.0	9.3	10.6	12.5	14.7	19.4	20.8	18.3	20.3	30.2	32.1	36.9	28.2	42.6
Oth Comm: > 5 yrs	0.4	0.3	4.4	0.9	0.9	1.8	1.6	2.1	2.2	4.1	3.2	3.6	5.3	6.5	5.5	8.3	12.5	18.1
Equity: < 1 yr	63.1	69.2	55.4	54.2	61.4	68.7	77.1	84.0	99.2	109.3	119.9	121.8	129.7	130.5	136.9	143.1	163.4	177.8
Equity: 1-5 yr	22.9	24.3	23.3	27.2	35.7	31.7	39.1	47.4	50.5	58.2	79.2	90.3	103.8	102.3	117.7	133.8	161.8	204.5
Equity: > 5 yrs	5.7	2.8	2.0	6.1	3.2	8.9	2.6	13.4	12.0	9.2	16.0	26.3	7.6	10.9	29.7	25.4	40.2	27.8

\*Note: Figures above exclude foreign exchange contracts with an original maturity of 14 days or less, futures contracts, written options, basis swaps, and any other contracts not subject to risk-based capital requirements.

\*Note: Currently, the Call Report does not include maturity breakouts for credit derivatives. Credit derivatives have been excluded here.

Data Source: Call Report

TABLE 1

**NOTIONAL AMOUNT OF OFF BALANCE SHEET DERIVATIVES CONTRACTS OF THE 25  
COMMERCIAL BANKS AND TRUST COMPANIES WITH THE MOST OFF BALANCE DERIVATIVE CONTRACTS  
JUNE 30, 2000, \$ MILLIONS  
NOTE: DATA ARE PRELIMINARY**

RANK	BANK NAME	STATE	TOTAL ASSETS	TOTAL DERIVATIVES	TOTAL FUTURES (EXCH TR)	TOTAL OPTIONS (EXCH TR)	TOTAL FORWARDS (OTC)	TOTAL SWAPS (OTC)	TOTAL OPTIONS (OTC)	TOTAL CREDIT DERIVATIVES (OTC)	SPOT FX
1	CHASE MANHATTAN BANK	NY	\$320,476	\$13,927,622	\$716,145	\$282,529	\$2,817,437	\$8,671,725	\$1,412,743	\$27,043	\$86,996
2	MORGAN GUARANTY TR CO OF NY	NY	\$173,606	\$9,535,288	\$491,863	\$379,461	\$956,827	\$5,065,139	\$2,396,597	\$245,402	\$3,689
3	BANK OF AMERICA NA	NC	\$604,683	\$6,990,993	\$366,943	\$365,234	\$1,411,423	\$4,087,614	\$732,083	\$27,696	\$117,837
4	CITIBANK N A	NY	\$356,826	\$4,702,375	\$150,870	\$49,707	\$2,269,290	\$1,473,900	\$710,333	\$48,275	\$110,935
5	FIRST UNION NATIONAL BANK	NC	\$236,103	\$964,552	\$233,246	\$129,447	\$87,244	\$273,746	\$239,269	\$1,600	\$3,432
6	BANK ONE NATIONAL ASSN	IL	\$95,795	\$892,706	\$32,685	\$111	\$120,602	\$521,174	\$217,957	\$176	\$13,296
7	FLEET NATIONAL BANK	RI	\$147,334	\$377,209	\$20,952	\$94,877	\$49,061	\$92,892	\$116,886	\$2,541	\$13,429
8	BANK OF NEW YORK	NY	\$74,186	\$354,118	\$19,525	\$15,558	\$55,146	\$106,218	\$155,946	\$1,725	\$7,925
9	HSBC BANK USA	NY	\$81,816	\$269,214	\$42,404	\$56,431	\$83,874	\$48,565	\$37,507	\$431	\$4,674
10	WELLS FARGO BANK NA	CA	\$101,188	\$184,528	\$49,299	\$6,670	\$30,143	\$56,998	\$41,208	\$210	\$782
11	BANKERS TRUST CO	NY	\$44,170	\$183,067	\$0	\$0	\$0	\$146,619	\$35,427	\$1,021	\$0
12	STATE STREET BANK&TRUST CO	MA	\$60,485	\$168,360	\$5,610	\$0	\$157,573	\$3,350	\$1,827	\$0	\$3,869
13	KEYBANK NATIONAL ASSN	OH	\$75,908	\$61,715	\$9,443	\$1,620	\$3,318	\$41,428	\$5,849	\$58	\$1,127
14	MELLON BANK NATIONAL ASSN	PA	\$37,598	\$56,206	\$4,259	\$150	\$26,056	\$21,732	\$4,009	\$0	\$4,953
15	NATIONAL CITY BANK	OH	\$33,220	\$54,639	\$12,663	\$0	\$939	\$32,071	\$8,853	\$113	\$107
16	PNC BANK NATIONAL ASSN	PA	\$68,110	\$58,163	\$1,994	\$8	\$5,167	\$22,844	\$23,743	\$4,408	\$854
17	CHASE MANHATTAN BANK USA NA	DE	\$31,532	\$37,947	\$22	\$0	\$5,663	\$10,265	\$21,997	\$0	\$0
18	LASALLE BANK NATIONAL ASSN	IL	\$46,958	\$36,422	\$2,999	\$0	\$475	\$27,970	\$4,979	\$0	\$31
19	SUNTRUST BANK	GA	\$96,986	\$33,530	\$1,402	\$0	\$3,751	\$21,897	\$6,480	\$0	\$145
20	WACHOVIA BANK NATIONAL ASSN	NC	\$66,610	\$33,666	\$0	\$0	\$6,314	\$22,501	\$4,337	\$514	\$741
21	FIRST TENNESSEE BANK NA	TN	\$18,900	\$30,071	\$0	\$0	\$5,093	\$820	\$23,917	\$240	\$0
22	CITIBANK SOUTH DAKOTA N A	SD	\$17,964	\$22,170	\$8,150	\$0	\$0	\$13,402	\$618	\$0	\$0
23	NORTHERN TRUST CO	IL	\$31,103	\$19,895	\$0	\$0	\$18,059	\$1,592	\$245	\$0	\$2,893
24	CHASE BANK OF TEXAS NA	TX	\$24,553	\$16,415	\$0	\$0	\$1,790	\$5,841	\$8,784	\$0	\$1,268
25	HARRIS TRUST&SAVINGS BANK	IL	\$21,228	\$16,118	\$0	\$3	\$1,652	\$3,913	\$10,535	\$15	\$59
TOP 25 COMMERCIAL BANKS & TCs WITH DERIVATIVES			\$2,867,338	\$39,026,989	\$2,170,474	\$1,381,807	\$8,116,898	\$20,774,214	\$6,222,128	\$361,469	\$379,042
OTHER 391 COMMERCIAL BANKS & TCs WITH DERIVATIVES			\$1,854,116	\$298,497	\$9,939	\$9,914	\$29,900	\$183,114	\$65,414	\$217	\$3,121
TOTAL AMOUNTS FOR ALL 416 BKS & TCs WITH DERIVATIVES			\$4,721,454	\$39,325,486	\$2,180,413	\$1,391,720	\$8,146,797	\$20,957,328	\$6,287,542	\$361,685	\$382,163

Note: Currently, the Call Report does not differentiate credit derivatives by contract type. Credit derivatives have been included in the sum of total derivatives here.

Note: Before the first quarter of 1995 total derivatives included spot foreign exchange. Beginning in the first quarter, 1995, spot foreign exchange was reported separately.

Note: Numbers may not add due to rounding.

Data source: Call Report, schedule RC-L

TABLE 2

**NOTIONAL AMOUNT OF OFF BALANCE SHEET DERIVATIVE CONTRACTS OF THE 25  
HOLDING COMPANIES WITH THE MOST OFF BALANCE SHEET DERIVATIVES CONTRACTS  
JUNE 30, 2000, \$ MILLIONS  
NOTE: DATA ARE PRELIMINARY**

RANK	HOLDING COMPANY	STATE	TOTAL ASSETS	TOTAL DERIVATIVES	FUTURES (EXCH TR)	OPTIONS (EXCH TR)	FORWARDS (OTC)	SWAPS (OTC)	OPTIONS (OTC)	CREDIT DERIVATIVES (OTC)	SPOT FX
1	CHASE MANHATTAN CORPORATION, THE	NY	\$396,045	\$14,298,270	\$741,311	\$533,248	2894544	\$8,681,641	\$1,420,483	\$27,043	\$88,153
2	J.P. MORGAN & CO. INCORPORATED	NY	\$266,323	\$9,622,008	\$530,031	\$406,913	1035996	\$5,027,443	\$2,376,223	\$245,402	\$3,689
3	CITIGROUP INC.	NY	\$791,333	\$7,657,173	\$315,854	\$65,168	2415488	\$3,875,856	\$930,346	\$54,461	\$106,154
4	BANK OF AMERICA CORPORATION	NC	\$679,538	\$6,209,791	\$374,947	\$368,319	1240417	\$3,578,002	\$622,348	\$25,758	\$94,431
5	FIRST UNION CORPORATION	NC	\$257,994	\$969,271	\$237,068	\$133,335	90270	\$268,066	\$238,932	\$1,600	\$3,432
6	BANK ONE CORPORATION	IL	\$272,709	\$897,542	\$34,519	\$563	119355	\$521,843	\$220,960	\$302	\$13,319
7	FLEETBOSTON FINANCIAL CORPORATION	MA	\$181,259	\$378,875	\$21,400	\$96,282	49061	\$91,048	\$118,543	\$2,541	\$13,429
8	BANK OF NEW YORK COMPANY	NY	\$76,661	\$352,709	\$19,525	\$15,558	55146	\$104,812	\$155,942	\$1,725	\$7,925
9	HSBC NORTH AMERICA INC.	NY	\$84,826	\$267,625	\$42,404	\$56,431	83882	\$46,970	\$37,507	\$431	\$4,680
10	TAUNUS CORPORATION	NY	\$195,403	\$236,709	\$3,623	\$37,626	0	\$153,564	\$37,210	\$4,686	\$0
11	WELLS FARGO & COMPANY	CA	\$234,159	\$197,710	\$49,299	\$6,726	31434	\$62,588	\$47,358	\$305	\$1,039
12	STATE STREET CORPORATION	MA	\$64,632	\$169,439	\$163,399	\$1,475	0	\$2,737	\$1,827	\$0	3356
13	KEYCORP	OH	\$84,412	\$68,035	\$9,443	\$1,620	\$3,318	\$44,885	\$8,711	\$58	\$1,127
14	NATIONAL CITY CORPORATION	OH	\$84,601	\$59,226	\$12,663	\$1,040	\$4,396	\$32,161	\$8,853	\$113	\$256
15	MELLON FINANCIAL CORPORATION	PA	\$46,252	\$54,332	\$4,566	\$150	\$26,057	\$19,550	\$4,009	\$0	\$4,953
16	ABN AMRO NORTH AMERICA, INC.	IL	\$67,494	\$53,897	\$5,604	\$0	\$475	\$39,233	\$8,586	\$0	\$31
17	PNC FINANCIAL SERVICES GROUP, INC., THE	PA	\$75,747	\$57,310	\$1,994	\$8	\$5,173	\$21,607	\$24,121	\$4,408	\$854
18	SUNTRUST BANKS, INC.	GA	\$99,751	\$32,603	\$1,402	\$0	\$3,731	\$20,970	\$6,500	\$0	\$145
19	WACHOVIA CORPORATION	NC	\$70,811	\$32,396	\$20	\$0	\$6,352	\$21,176	\$4,334	\$514	\$741
20	FIRST TENNESSEE NATIONAL CORPORATION	TN	\$19,806	\$30,071	\$0	\$0	\$5,093	\$820	\$23,917	\$240	\$0
21	BANKMONT FINANCIAL CORP	DE	\$44,979	\$21,006	\$3,733	\$216	\$1,783	\$4,724	\$10,535	\$15	\$54
22	NORTHERN TRUST CORPORATION	IL	\$36,848	\$19,525	\$0	\$0	\$18,059	\$1,337	\$130	\$0	\$2,893
23	UNIONBANCAL CORPORATION	CA	\$34,014	\$14,297	\$0	\$0	\$2,075	\$4,795	\$7,427	\$0	\$593
24	COMERICA INCORPORATED	MI	\$41,104	\$13,251	\$0	\$0	\$1,874	\$10,847	\$486	\$44	\$279
25	US BANCORP	MN	\$86,174	\$11,642	\$15	\$0	\$2,435	\$7,904	\$1,288	\$0	\$308
<b>TOTALS FOR THE TOP 25 HOLDING COMPANIES WITH DERIVATIVES</b>			<b>\$4,292,873</b>	<b>\$41,724,713</b>	<b>\$2,572,820</b>	<b>\$1,724,678</b>	<b>\$80,821</b>	<b>\$22,644,579</b>	<b>\$6,316,576</b>	<b>\$369,646</b>	<b>\$351,841</b>
<p>Note: Currently, the Y-9 report does not differentiate credit derivatives by contract type. Credit derivatives have been included in the sum of total derivatives.  Note: In previous quarters, total derivatives included spot foreign exchange. Beginning in the first quarter, 1995, spot foreign exchange is reported separately.  Note: Numbers may not add due to rounding.  Data source: Consolidated Financial Statements for Bank Holding Companies, FR Y-9, schedule HC-F</p>											

TABLE 3

**DISTRIBUTION OF OFF BALANCE SHEET DERIVATIVES CONTRACTS OF THE 25  
COMMERCIAL BANKS AND TRUST COMPANIES WITH THE MOST OFF BALANCE SHEET DERIVATIVE CONTRACTS  
JUNE 30, 2000, \$ MILLIONS, RATIOS IN PERCENT  
NOTE: DATA ARE PRELIMINARY**

RANK	BANK NAME	STATE	TOTAL ASSETS	TOTAL DERIVATIVES	PERCENT EXCH TRADED CONTRACTS	PERCENT OTC CONTRACTS	PERCENT INT RATE CONTRACTS	PERCENT FOREIGN EXCH CONTRACTS	PERCENT OTHER CONTRACTS	PERCENT CREDIT DERIVATIVES
					(%)	(%)	(%)	(%)	(%)	(%)
1	CHASE MANHATTAN BANK	NY	\$320,476	\$13,927,622	7.2	92.8	86.5	12.0	0.6	0.6
2	MORGAN GUARANTY TR CO OF NY	NY	\$173,606	\$9,535,288	9.1	90.9	79.9	12.4	4.6	0.6
3	BANK OF AMERICA NA	NC	\$604,683	\$6,990,993	10.5	89.5	82.3	14.4	2.0	0.9
4	CITIBANK N A	NY	\$356,826	\$4,702,375	4.3	95.7	55.3	41.2	2.1	0.4
5	FIRST UNION NATIONAL BANK	NC	\$236,103	\$964,552	37.6	62.4	96.7	2.7	0.5	0.0
6	BANK ONE NATIONAL ASSN	IL	\$95,795	\$892,706	3.7	96.3	86.9	11.9	0.9	0.3
7	FLEET NATIONAL BANK	RI	\$147,334	\$377,209	30.7	69.3	82.5	16.7	0.1	0.1
8	BANK OF NEW YORK	NY	\$74,186	\$354,118	9.9	90.1	71.9	27.7	0.0	0.0
9	HSBC BANK USA	NY	\$81,816	\$269,214	36.7	63.3	63.1	27.6	0.2	9.0
10	WELLS FARGO BANK NA	CA	\$101,188	\$184,528	30.3	69.7	97.5	2.3	0.0	0.0
11	BANKERS TRUST CO	NY	\$44,170	\$183,067	0.0	100.0	53.2	36.2	7.3	2.6
12	STATE STREET BANK&TRUST CO	MA	\$60,485	\$168,360	3.3	96.7	5.8	94.2	0.0	0.0
13	KEYBANK NATIONAL ASSN	OH	\$75,908	\$61,715	17.9	82.1	91.4	8.2	0.3	0.0
14	MELLON BANK NATIONAL ASSN	PA	\$37,598	\$56,206	7.8	92.2	52.7	45.9	1.3	0.1
15	NATIONAL CITY BANK	OH	\$33,220	\$54,639	23.2	76.8	98.0	1.6	0.1	0.0
16	PNC BANK NATIONAL ASSN	PA	\$68,110	\$58,163	3.4	96.6	86.7	5.7	0.1	0.0
17	CHASE MANHATTAN BANK USA NA	DE	\$31,532	\$37,947	0.1	99.9	98.6	0.1	1.4	0.0
18	LASALLE BANK NATIONAL ASSN	IL	\$46,958	\$36,422	8.2	91.8	97.3	2.6	0.1	0.0
19	SUNTRUST BANK	GA	\$96,986	\$33,530	4.2	95.8	91.8	6.3	1.9	0.1
20	WACHOVIA BANK NATIONAL ASSN	NC	\$66,610	\$33,666	0.0	100.0	76.8	21.1	0.5	0.0
21	FIRST TENNESSEE BANK NA	TN	\$18,900	\$30,071	0.0	100.0	99.2	0.0	0.0	0.0
22	CITIBANK SOUTH DAKOTA N A	SD	\$17,964	\$22,170	36.8	63.2	100.0	0.0	0.0	0.0
23	NORTHERN TRUST CO	IL	\$31,103	\$19,895	0.0	100.0	9.1	90.9	0.0	0.0
24	CHASE BANK OF TEXAS NA	TX	\$24,553	\$16,415	0.0	100.0	80.5	12.5	6.9	0.1
25	HARRIS TRUST&SAVINGS BANK	IL	\$21,228	\$16,118	0.0	100.0	89.2	10.6	0.2	0.0
TOP 25 COMMERCIAL BANKS & TCs WITH DERIVATIVES			\$2,867,338	\$39,026,989	\$3,552,281	\$35,474,708	\$31,156,369	\$6,465,158	\$1,043,993	\$361,469
OTHER 391 COMMERCIAL BANKS & TCs WITH DERIVATIVES			\$1,854,116	\$298,497	\$19,852	\$278,645	\$271,917	\$23,673	\$2,691	\$217
TOTAL AMOUNTS FOR ALL 416 BKS & TCs WITH DERIVATIVES			\$4,721,454	\$39,325,486	\$3,572,133	\$35,753,353	\$31,428,285	\$6,488,831	\$1,046,685	\$361,685
TOP 25 COMMERCIAL BANKS & TC: % OF ALL 416 BKS & TCs WITH DERIVATIVES				99.2	9.0	90.2	79.2	16.4	2.7	0.9
OTHER 391 COMMERCIAL BANKS & TCS: % OF ALL 416 BKS & TCs WITH DERIVATIVES				0.8	0.1	0.7	0.7	0.1	0.0	0.0
TOTAL AMOUNTS FOR ALL 416 BKS & TCS: % OF ALL 416 BKS & TCs WITH DERIVATIVES				100.0	9.1	90.9	79.9	16.5	2.7	0.9
<p>Note: Currently, the Call Report does not differentiate credit derivatives by over the counter or exchange traded. Credit derivatives have been included in the "over the counter" category as well as in the sum of total derivatives here.</p> <p>Note: "Foreign Exchange" does not include spot fx.</p> <p>Note: "Other" is defined as the sum of commodity and equity contracts.</p> <p>Note: Before the first quarter of 1995 total derivatives included spot foreign exchange. Beginning in the first quarter, 1995, spot foreign exchange was reported separately.</p> <p>Note: Numbers may not add due to rounding.</p> <p>Data source: Call Report, schedule RC-L</p>										

TABLE 4

**CREDIT EQUIVALENT EXPOSURE OF THE 25  
COMMERCIAL BANKS AND TRUST COMPANIES WITH THE MOST OFF BALANCE SHEET DERIVATIVES CONTRACTS  
JUNE 30, 2000, \$ MILLIONS, RATIOS IN PERCENT  
NOTE: DATA ARE PRELIMINARY**

RANK	BANK NAME	STATE	TOTAL ASSETS	TOTAL DERIVATIVES	BILATERALLY NETTED CURRENT EXPOSURE	FUTURE EXPOSURE (NEW RBC ADD ON)	TOTAL CREDIT EXPOSURE FROM ALL CONTRACTS	TOTAL CREDIT EXPOSURE TO CAPITAL RATIO (%)
1	CHASE MANHATTAN BANK	NY	\$320,476	\$13,927,622	\$33,275	\$82,942	\$116,217	428.6
2	MORGAN GUARANTY TR CO OF NY	NY	\$173,606	\$9,535,288	\$41,353	\$72,684	\$114,037	817.6
3	BANK OF AMERICA NA	NC	\$604,683	\$6,990,993	\$32,608	\$55,839	\$88,447	158.9
4	CITIBANK N A	NY	\$356,826	\$4,702,375	\$19,227	\$35,960	\$55,187	165.7
5	FIRST UNION NATIONAL BANK	NC	\$236,103	\$964,552	\$4,318	\$3,164	\$7,482	35.4
6	BANK ONE NATIONAL ASSN	IL	\$95,795	\$892,706	\$3,200	\$6,504	\$9,704	105.7
7	FLEET NATIONAL BANK	RI	\$147,334	\$377,209	\$1,664	\$1,454	\$3,118	18.2
8	BANK OF NEW YORK	NY	\$74,186	\$354,118	\$764	\$778	\$1,542	21.6
9	HSBC BANK USA	NY	\$81,816	\$269,214	\$955	\$1,549	\$2,504	27.6
10	WELLS FARGO BANK NA	CA	\$101,188	\$184,528	\$483	\$420	\$903	8.0
11	BANKERS TRUST CO	NY	\$44,170	\$183,067	\$1,068	\$4,264	\$5,332	81.2
12	STATE STREET BANK&TRUST CO	MA	\$60,485	\$168,360	\$1,580	\$1,730	\$3,310	105.4
13	KEYBANK NATIONAL ASSN	OH	\$75,908	\$61,715	\$531	\$300	\$831	10.1
14	MELLON BANK NATIONAL ASSN	PA	\$37,598	\$56,206	\$600	\$374	\$974	21.4
15	NATIONAL CITY BANK	OH	\$33,220	\$54,639	\$549	\$270	\$819	25.0
16	PNC BANK NATIONAL ASSN	PA	\$68,110	\$58,163	\$366	\$235	\$602	9.2
17	CHASE MANHATTAN BANK USA NA	DE	\$31,532	\$37,947	\$56	\$131	\$187	4.8
18	LASALLE BANK NATIONAL ASSN	IL	\$46,958	\$36,422	\$60	\$287	\$347	7.5
19	SUNTRUST BANK	GA	\$96,986	\$33,530	\$464	\$235	\$698	7.3
20	WACHOVIA BANK NATIONAL ASSN	NC	\$66,610	\$33,666	\$405	\$354	\$759	8.6
21	FIRST TENNESSEE BANK NA	TN	\$18,900	\$30,071	\$10	\$110	\$119	7.9
22	CITIBANK SOUTH DAKOTA N A	SD	\$17,964	\$22,170	\$1	\$66	\$67	3.0
23	NORTHERN TRUST CO	IL	\$31,103	\$19,895	\$170	\$160	\$330	13.7
24	CHASE BANK OF TEXAS NA	TX	\$24,553	\$16,415	\$256	\$125	\$382	15.8
25	HARRIS TRUST&SAVINGS BANK	IL	\$21,228	\$16,118	\$63	\$70	\$133	7.3
TOP 25 COMMERCIAL BANKS & TCs WITH DERIVATIVES			\$2,867,338	\$39,026,989	\$144,027	\$270,003	\$414,030	Average% 84.63
OTHER 391 COMMERCIAL BANKS & TCs WITH DERIVATIVES			\$1,854,116	\$298,497	\$2,095	\$1,786	\$3,882	N/A
TOTAL AMOUNTS FOR ALL 416 BKS & TCs WITH DERIVATIVES			\$4,721,454	\$39,325,486	\$146,122	\$271,789	\$417,912	6.39
Commercial banks also hold on-balance sheet assets in volumes that are multiples of bank capital. For example:								
			EXPOSURE TO RISK BASED CAPITAL:					
EXPOSURES FROM OTHER ASSETS			ALL COMMERCIAL BANKS					
ALL COMMERCIAL BANKS			ALL BANKS					
1-4 FAMILY MORTGAGES			156%					
C&I LOANS			179%					
SECURITIES NOT IN TRADING ACCOUNT			181%					
Note: The numbers reported above for future credit exposures reflect gross add-ons.								
Note: The total credit exposure to capital ratio is calculated using risk based capital (tier one plus tier two capital).								
Note: Currently, the Call Report does not differentiate credit derivatives by contract type. Credit derivatives have been included in the sum of total derivatives here.								
Note: Before the first quarter of 1995 total derivatives included spot foreign exchange. Beginning in the first quarter, 1995, spot foreign exchange was reported separately.								
Note: Numbers may not add due to rounding.								
Source: Call Report Schedule RC-R								

TABLE 5

**NOTIONAL AMOUNTS OF OFF BALANCE SHEET DERIVATIVES CONTRACTS HELD FOR TRADING OF THE 7  
COMMERCIAL BANKS AND TRUST COMPANIES WITH THE MOST OFF BALANCE SHEET DERIVATIVES CONTRACTS  
JUNE 30, 2000, \$ MILLIONS, RATIOS IN PERCENT  
NOTE: DATA ARE PRELIMINARY**

<b>RANK</b>	<b>BANK NAME</b>	<b>STATE</b>	<b>TOTAL ASSETS</b>	<b>TOTAL DERIVATIVES</b>	<b>TOTAL HELD FOR TRADING &amp; MTM</b>	<b>% HELD FOR TRADING &amp; MTM</b>	<b>TOTAL NOT TRADED MTM &amp; NOT MTM</b>	<b>% NOT TRADED MTM &amp; NOT MTM</b>
1	CHASE MANHATTAN BANK	NY	\$320,476	\$13,900,579	\$13,639,615	98.1	\$260,964	1.9
2	MORGAN GUARANTY TR CO OF NY	NY	\$173,606	\$9,289,886	\$9,231,340	99.4	\$58,546	0.6
3	BANK OF AMERICA NA	NC	\$604,683	\$6,963,297	\$6,839,165	98.2	\$124,132	1.8
4	CITIBANK N A	NY	\$356,826	\$4,654,100	\$4,494,353	96.6	\$159,610	3.4
5	FIRST UNION NATIONAL BANK	NC	\$236,103	\$962,952	\$626,801	65.1	\$336,151	34.9
6	BANK ONE NATIONAL ASSN	IL	\$95,795	\$892,529	\$885,843	99.3	\$6,687	0.7
7	FLEET NATIONAL BANK	RI	\$147,334	\$374,668	\$303,028	80.9	\$70,981	18.9
<b>TOP 7 COMMERCIAL BANKS &amp; TCs WITH DERIVATIVES</b>			<b>\$1,934,823</b>	<b>\$37,038,011</b>	<b>\$36,020,145</b>	<b>97.3</b>	<b>\$1,017,071</b>	<b>2.7</b>
OTHER 409 COMMERCIAL BANKS & TCs WITH DERIVATIVES			\$2,786,631	\$1,925,789	\$1,255,873	65.2	\$667,116	34.6
<b>TOP 25 COMMERCIAL BANKS &amp; TCs WITH DERIVATIVES</b>			<b>\$2,867,338</b>	<b>\$38,665,520</b>	<b>\$37,202,619</b>	<b>96.2</b>	<b>\$1,459,851</b>	<b>3.8</b>
OTHER 391 COMMERCIAL BANKS & TCs WITH DERIVATIVES			\$1,854,116	\$298,281	\$73,399	24.6	\$224,336	75.2
<b>TOTAL AMOUNTS FOR ALL 416 BKS &amp; TCs WITH DERIVATIVES</b>			<b>\$4,721,454</b>	<b>\$38,963,801</b>	<b>\$37,276,018</b>	<b>95.7</b>	<b>\$1,684,187</b>	<b>4.3</b>

Note: Currently, the Call Report does not differentiate between traded and non-traded credit derivatives. Credit derivatives have been excluded from the sum of total derivatives here.

Note: In previous quarters, total derivatives included spot foreign exchange. Beginning in the first quarter, 1995, spot foreign exchange is reported separately.

Note: Numbers may not add due to rounding.

Data source: Call Report, schedule RC-L

TABLE 6

**GROSS FAIR VALUES OF OFF BALANCE SHEET DERIVATIVE CONTRACTS OF THE 7  
COMMERCIAL BANKS AND TRUST COMPANIES WITH THE MOST OFF BALANCE SHEET DERIVATIVE CONTRACTS  
JUNE 30, 2000, \$ MILLIONS  
NOTE: DATA ARE PRELIMINARY**

RANK	BANK NAME	STATE	TOTAL ASSETS	TOTAL DERIVATIVES	TRADED :	TRADED :	NOT TRADED :	NOT TRADED :
					(MTM) GROSS POSITIVE FAIR VALUE*	(MTM) GROSS NEGATIVE FAIR VALUE**	(MTM & NOT MTM) GROSS POSITIVE FAIR VALUE*	(MTM & NOT MTM) GROSS NEGATIVE FAIR VALUE**
1	CHASE MANHATTAN BANK	NY	\$320,476	\$13,900,579	\$121,460	\$117,848	\$745	\$963
2	MORGAN GUARANTY TR CO OF NY	NY	\$173,606	\$9,289,886	\$131,686	\$131,485	\$592	\$327
3	BANK OF AMERICA NA	NC	\$604,683	\$6,963,297	\$78,653	\$74,330	\$515	\$1,770
4	CITIBANK N A	NY	\$356,826	\$4,654,100	\$49,264	\$47,919	\$370	\$722
5	FIRST UNION NATIONAL BANK	NC	\$236,103	\$962,952	\$4,432	\$4,387	\$1,441	\$1,107
6	BANK ONE NATIONAL ASSN	IL	\$95,795	\$892,529	\$9,890	\$9,866	\$98	\$46
7	FLEET NATIONAL BANK	RI	\$147,334	\$374,668	\$1,534	\$1,641	\$682	\$637
TOP 7 COMMERCIAL BANKS & TCs WITH DERIVATIVES			\$1,934,823	\$37,038,011	\$396,920	\$387,476	\$4,443	\$5,572
OTHER 409 COMMERCIAL BANKS & TCs WITH DERIVATIVES			\$2,786,631	\$1,925,789	\$14,950	\$14,819	\$4,106	\$5,831
TOTAL AMOUNTS FOR ALL 416 BKS & TCs WITH DERIVATIVES			\$4,721,454	\$38,963,801	\$411,870	\$402,295	\$8,549	\$11,403

Note: Currently, the Call Report does not differentiate credit derivatives by gross negative and positive fair values. Credit derivatives have been excluded from the sum of total derivatives here.

Note: Before the first quarter of 1995 total derivatives included spot foreign exchange. Beginning in the first quarter, 1995, spot foreign exchange was reported separately.

\*Market value of contracts that have a positive fair value as of the end of the second quarter, 2000.

\*\*Market value of contracts that have a negative fair value as of the end of the second quarter, 2000.

Note: Numbers may not sum due to rounding.

Data source: Call Report, schedule RC-L

TABLE 7

**TRADING REVENUE FROM CASH INSTRUMENTS AND OFF BALANCE SHEET DERIVATIVES OF THE 7  
COMMERCIAL BANKS AND TRUST COMPANIES WITH THE MOST OFF BALANCE SHEET DERIVATIVE CONTRACTS  
JUNE 30, 2000, \$ MILLIONS**

NOTE: REVENUE FIGURES ARE FOR SECOND QUARTER (NOT YEAR-TO-DATE)  
DATA ARE PRELIMINARY

RANK	BANK NAME	STATE	TOTAL ASSETS	TOTAL DERIVATIVES	TOTAL TRADING REV FROM CASH & OFF BAL SHEET POSITIONS	TRADING REV FROM INT RATE POSITIONS	TRADING REV FROM FOREIGN EXCH POSITIONS	TRADING REV FROM EQUITY POSITIONS	TRADING REV FROM COMMOD & OTH POSITIONS
1	CHASE MANHATTAN BANK	NY	\$320,476	\$13,900,579	\$707	\$281	\$258	\$26	\$142
2	MORGAN GUARANTY TR CO OF NY	NY	\$173,606	\$9,289,886	\$693	\$426	\$50	\$201	\$16
3	BANK OF AMERICA NA	NC	\$604,683	\$6,963,297	\$251	\$49	\$130	\$48	\$24
4	CITIBANK N A	NY	\$356,826	\$4,654,100	\$706	\$64	\$484	\$158	\$0
5	FIRST UNION NATIONAL BANK	NC	\$236,103	\$962,952	\$78	(\$17)	\$25	\$69	\$1
6	BANK ONE NATIONAL ASSN	IL	\$95,795	\$892,529	\$31	\$3	\$19	\$5	\$3
7	FLEET NATIONAL BANK	RI	\$147,334	\$374,668	\$94	\$42	\$52	\$0	\$0
TOP 7 COMMERCIAL BANKS & TCs WITH DERIVATIVES			\$1,934,823	\$37,038,011	\$2,559	\$848	\$1,018	\$507	\$186
OTHER 409 COMMERCIAL BANKS & TCs WITH DERIVATIVES			\$2,786,631	\$1,925,789	\$475	\$145	\$318	\$15	(\$3)
TOTAL AMOUNTS FOR ALL 416 BKS & TCs WITH DERIVATIVES			\$4,721,454	\$38,963,801	\$3,034	\$993	\$1,336	\$522	\$183

Note: Currently, the Call Report does not include trading revenues from credit derivatives. Credit derivatives have been excluded from the sum of total derivatives here.

Note: Trading revenue is defined here as "trading revenue from cash instruments and off balance sheet derivative instruments."

Note: Before the first quarter of 1995 total derivatives included spot foreign exchange. Beginning in the first quarter, 1995, spot foreign exchange was reported separately.

Note: Numbers may not sum due to rounding.

Data source: Call Report, schedule RC-I



TABLE 8

**NOTIONAL AMOUNT OF OFF BALANCE SHEET DERIVATIVES CONTRACTS BY CONTRACT TYPE & MATURITY FOR THE 7  
COMMERCIAL BANKS AND TRUST COMPANIES WITH THE MOST OFF BALANCE DERIVATIVE CONTRACTS  
JUNE 30, 2000, \$ MILLIONS  
NOTE: DATA ARE PRELIMINARY**

RANK	BANK NAME	STATE	TOTAL ASSETS	TOTAL DERIVATIVES	INT RATE MATURITY < 1 YR	INT RATE MATURITY 1 - 5 YRS	INT RATE MATURITY > 5 YRS	INT RATE ALL MATURITIES	FOREIGN EXCH MATURITY < 1 YR	FOREIGN EXCH MATURITY 1 - 5 YRS	FOREIGN EXCH MATURITY > 5 YRS	FOREIGN EXCH ALL MATURITIES
1	CHASE MANHATTAN BANK	NY	\$320,476	\$13,900,579	\$4,226,588	\$4,247,537	\$1,780,716	\$10,254,841	\$1,220,150	\$172,508	\$90,530	\$1,483,188
2	MORGAN GUARANTY TR CO OF NY	NY	\$173,606	\$9,289,886	\$1,263,351	\$2,249,829	\$1,566,280	\$5,079,460	\$622,559	\$164,526	\$105,876	\$892,960
3	BANK OF AMERICA NA	NC	\$604,683	\$6,963,297	\$1,971,774	\$1,528,172	\$1,136,341	\$4,636,287	\$800,024	\$71,493	\$34,265	\$905,782
4	CITIBANK N A	NY	\$356,826	\$4,654,100	\$1,278,795	\$559,284	\$350,444	\$2,188,523	\$1,530,821	\$106,121	\$42,117	\$1,679,059
5	FIRST UNION NATIONAL BANK	NC	\$236,103	\$962,952	\$226,562	\$132,761	\$125,309	\$484,632	\$11,355	\$4,285	\$1,433	\$17,073
6	BANK ONE NATIONAL ASSN	IL	\$95,795	\$892,529	\$156,864	\$281,172	\$183,280	\$621,315	\$81,996	\$13,008	\$4,717	\$99,721
7	FLEET NATIONAL BANK	RI	\$147,334	\$374,668	\$33,565	\$99,272	\$21,294	\$154,131	\$45,371	\$2,666	\$429	\$48,466
TOP 7 COMMERCIAL BANKS & TCs WITH DERIVATIVES			\$1,934,823	\$37,038,011	\$9,157,500	\$9,098,027	\$5,163,664	\$23,419,190	\$4,312,276	\$534,606	\$279,367	\$5,126,249
OTHER 409 COMMERCIAL BANKS & TCs WITH DERIVATIVES			\$2,786,631	\$1,925,789	\$344,696	\$475,901	\$188,878	\$1,009,475	\$267,385	\$54,300	\$7,181	\$328,866
TOTAL AMOUNTS FOR ALL 416 BKS & TCs WITH DERIVATIVES			\$4,721,454	\$38,963,801	\$9,502,196	\$9,573,927	\$5,352,542	\$24,428,665	\$4,579,660	\$588,907	\$286,548	\$5,455,114

Note: Currently, the Call Report does not include maturity breakouts for credit derivatives. Credit derivatives have been excluded from the sum of total derivatives here.

Note: Before the first quarter of 1995 total derivatives included spot foreign exchange. Beginning in the first quarter, 1995, spot foreign exchange was reported separately.

Note: Figures above exclude foreign exchange contracts with an original maturity of 14 days or less, futures contracts, written options, basis swaps, and any contracts not subject to risk-based capital requirements.

Therefore, the total notional amount of derivatives by maturity will not add to the total derivatives figure in this table.

Note: Numbers may not add due to rounding.

Data source: Call Report, schedule RC-R

TABLE 9

**NOTIONAL AMOUNT OF OFF BALANCE SHEET DERIVATIVES CONTRACTS BY CONTRACT TYPE & MATURITY FOR THE 7  
COMMERCIAL BANKS AND TRUST COMPANIES WITH THE MOST OFF BALANCE DERIVATIVE CONTRACTS  
JUNE 30, 2000, \$ MILLIONS  
NOTE: DATA ARE PRELIMINARY**

RANK	BANK NAME	STATE	TOTAL ASSETS	TOTAL DERIVATIVES	GOLD MATURITY < 1 YR	GOLD MATURITY 1 - 5 YRS	GOLD MATURITY > 5 YRS	GOLD ALL MATURITIES	PREC METALS MATURITY < 1 YR	PREC METALS MATURITY 1 - 5 YRS	PREC METALS MATURITY > 5 YRS	PREC METALS ALL MATURITIES
1	CHASE MANHATTAN BANK	NY	\$320,476	\$13,900,579	\$11,955	\$16,589	\$6,470	\$35,014	\$301	\$65	\$0	\$366
2	MORGAN GUARANTY TR CO OF NY	NY	\$173,606	\$9,289,886	\$9,216	\$17,676	\$2,849	\$29,741	\$452	\$435	\$0	\$887
3	BANK OF AMERICA NA	NC	\$604,683	\$6,963,297	\$0	\$0	\$0	\$0	\$225	\$36	\$0	\$261
4	CITIBANK N A	NY	\$356,826	\$4,654,100	\$4,584	\$3,966	\$2,864	\$11,414	\$92	\$5	\$0	\$97
5	FIRST UNION NATIONAL BANK	NC	\$236,103	\$962,952	\$0	\$0	\$0	\$0	\$0	\$0	\$0	\$0
6	BANK ONE NATIONAL ASSN	IL	\$95,795	\$892,529	\$0	\$0	\$0	\$0	\$0	\$0	\$0	\$0
7	FLEET NATIONAL BANK	RI	\$147,334	\$374,668	\$287	\$0	\$0	\$287	\$78	\$0	\$0	\$78
TOP 7 COMMERCIAL BANKS & TCs WITH DERIVATIVES			\$1,934,823	\$37,038,011	\$26,042	\$38,231	\$12,183	\$76,456	\$1,148	\$541	\$0	\$1,689
OTHER 409 COMMERCIAL BANKS & TCs WITH DERIVATIVES			\$2,786,631	\$1,925,789	\$11,840	\$3,259	\$584	\$15,682	\$1,756	\$63	\$0	\$1,819
TOTAL AMOUNTS FOR ALL 416 BKS & TCs WITH DERIVATIVES			\$4,721,454	\$38,963,801	\$37,882	\$41,490	\$12,766	\$92,138	\$2,905	\$603	\$0	\$3,508

Note: Currently, the Call Report does not include maturity breakouts for credit derivatives. Credit derivatives have been excluded from the sum of total derivatives here.

Note: Before the first quarter of 1995 total derivatives included spot foreign exchange. Beginning in the first quarter, 1995, spot foreign exchange was reported separately.

Note: Figures above exclude foreign exchange contracts with an original maturity of 14 days or less, futures contracts, written options, basis swaps, and any contracts not subject to risk-based capital requirements.

Therefore, the total notional amount of derivatives by maturity will not add to the total derivatives figure in this table.

Note: Numbers may not add due to rounding.

Data source: Call Report, schedule RC-R

TABLE 10

**NOTIONAL AMOUNT OF OFF BALANCE SHEET DERIVATIVES CONTRACTS BY CONTRACT TYPE & MATURITY FOR THE 7  
COMMERCIAL BANKS AND TRUST COMPANIES WITH THE MOST OFF BALANCE DERIVATIVE CONTRACTS  
JUNE 30, 2000, \$ MILLIONS  
NOTE: DATA ARE PRELIMINARY**

RANK	BANK NAME	STATE	TOTAL ASSETS	TOTAL DERIVATIVES	OTHER COMM MATURITY < 1 YR	OTHER COMM MATURITY 1 - 5 YRS	OTHER COMM MATURITY > 5 YRS	OTHER COMM ALL MATURITIES	EQUITY MATURITY < 1 YR	EQUITY MATURITY 1 - 5 YRS	EQUITY MATURITY > 5 YRS	EQUITY ALL MATURITIES
1	CHASE MANHATTAN BANK	NY	\$320,476	\$13,900,579	\$8,727	\$17,238	\$1,704	\$27,669	\$15,170	\$21,439	\$951	\$37,560
2	MORGAN GUARANTY TR CO OF NY	NY	\$173,606	\$9,289,886	\$1,032	\$3,623	\$3,158	\$7,813	\$85,147	\$82,894	\$15,441	\$183,483
3	BANK OF AMERICA NA	NC	\$604,683	\$6,963,297	\$41,124	\$16,320	\$12,361	\$69,805	\$41,382	\$73,141	\$7,307	\$121,830
4	CITIBANK N A	NY	\$356,826	\$4,654,100	\$1,369	\$2,573	\$765	\$4,707	\$22,149	\$20,471	\$1,410	\$44,030
5	FIRST UNION NATIONAL BANK	NC	\$236,103	\$962,952	\$9	\$0	\$0	\$9	\$482	\$1,942	\$1	\$2,425
6	BANK ONE NATIONAL ASSN	IL	\$95,795	\$892,529	\$1,018	\$744	\$98	\$1,859	\$3,055	\$1,693	\$6	\$4,753
7	FLEET NATIONAL BANK	RI	\$147,334	\$374,668	\$0	\$0	\$0	\$0	\$109	\$46	\$0	\$155
TOP 7 COMMERCIAL BANKS & TCs WITH DERIVATIVES			\$1,934,823	\$37,038,011	\$53,278	\$40,498	\$18,086	\$111,862	\$167,494	\$201,626	\$25,116	\$394,236
OTHER 409 COMMERCIAL BANKS & TCs WITH DERIVATIVES			\$2,786,631	\$1,925,789	\$2,837	\$2,072	\$11	\$4,920	\$10,297	\$2,891	\$2,673	\$15,861
TOTAL AMOUNTS FOR ALL 416 BKS & TCs WITH DERIVATIVES			\$4,721,454	\$38,963,801	\$56,115	\$42,570	\$18,097	\$116,782	\$177,791	\$204,517	\$27,789	\$410,097

Note: Currently, the Call Report does not include maturity breakouts for credit derivatives. Credit derivatives have been excluded from the sum of total derivatives here.

Note: Before the first quarter of 1995 total derivatives included spot foreign exchange. Beginning in the first quarter, 1995, spot foreign exchange was reported separately.

Note: Figures above exclude foreign exchange contracts with an original maturity of 14 days or less, futures contracts, written options, basis swaps, and any contracts not subject to risk-based capital requirements.

Therefore, the total notional amount of derivatives by maturity will not add to the total derivatives figure in this table.

Note: Numbers may not add due to rounding.

Data source: Call Report, schedule RC-R

TABLE 1

**NOTIONAL AMOUNT OF OFF BALANCE SHEET DERIVATIVES CONTRACTS OF THE 25  
COMMERCIAL BANKS AND TRUST COMPANIES WITH THE MOST OFF BALANCE DERIVATIVE CONTRACTS  
JUNE 30, 2000, \$ MILLIONS  
NOTE: DATA ARE PRELIMINARY**

RANK	BANK NAME	STATE	TOTAL ASSETS	TOTAL DERIVATIVES	TOTAL FUTURES (EXCH TR)	TOTAL OPTIONS (EXCH TR)	TOTAL FORWARDS (OTC)	TOTAL SWAPS (OTC)	TOTAL OPTIONS (OTC)	TOTAL CREDIT DERIVATIVES (OTC)	SPOT FX
1	CHASE MANHATTAN BANK	NY	\$320,476	\$13,927,622	\$716,145	\$282,529	\$2,817,437	\$8,671,725	\$1,412,743	\$27,043	\$86,996
2	MORGAN GUARANTY TR CO OF NY	NY	\$173,606	\$9,535,288	\$491,863	\$379,461	\$956,827	\$5,065,139	\$2,396,597	\$245,402	\$3,689
3	BANK OF AMERICA NA	NC	\$604,683	\$6,990,993	\$366,943	\$365,234	\$1,411,423	\$4,087,614	\$732,083	\$27,696	\$117,837
4	CITIBANK N A	NY	\$356,826	\$4,702,375	\$150,870	\$49,707	\$2,269,290	\$1,473,900	\$710,333	\$48,275	\$110,935
5	FIRST UNION NATIONAL BANK	NC	\$236,103	\$964,552	\$233,246	\$129,447	\$87,244	\$273,746	\$239,269	\$1,600	\$3,432
6	BANK ONE NATIONAL ASSN	IL	\$95,795	\$892,706	\$32,685	\$111	\$120,602	\$521,174	\$217,957	\$176	\$13,296
7	FLEET NATIONAL BANK	RI	\$147,334	\$377,209	\$20,952	\$94,877	\$49,061	\$92,892	\$116,886	\$2,541	\$13,429
8	BANK OF NEW YORK	NY	\$74,186	\$354,118	\$19,525	\$15,558	\$55,146	\$106,218	\$155,946	\$1,725	\$7,925
9	HSBC BANK USA	NY	\$81,816	\$269,214	\$42,404	\$56,431	\$83,874	\$48,565	\$37,507	\$431	\$4,674
10	WELLS FARGO BANK NA	CA	\$101,188	\$184,528	\$49,299	\$6,670	\$30,143	\$56,998	\$41,208	\$210	\$782
11	BANKERS TRUST CO	NY	\$44,170	\$183,067	\$0	\$0	\$0	\$146,619	\$35,427	\$1,021	\$0
12	STATE STREET BANK&TRUST CO	MA	\$60,485	\$168,360	\$5,610	\$0	\$157,573	\$3,350	\$1,827	\$0	\$3,869
13	KEYBANK NATIONAL ASSN	OH	\$75,908	\$61,715	\$9,443	\$1,620	\$3,318	\$41,428	\$5,849	\$58	\$1,127
14	MELLON BANK NATIONAL ASSN	PA	\$37,598	\$56,206	\$4,259	\$150	\$26,056	\$21,732	\$4,009	\$0	\$4,953
15	NATIONAL CITY BANK	OH	\$33,220	\$54,639	\$12,663	\$0	\$939	\$32,071	\$8,853	\$113	\$107
16	PNC BANK NATIONAL ASSN	PA	\$68,110	\$58,163	\$1,994	\$8	\$5,167	\$22,844	\$23,743	\$4,408	\$854
17	CHASE MANHATTAN BANK USA NA	DE	\$31,532	\$37,947	\$22	\$0	\$5,663	\$10,265	\$21,997	\$0	\$0
18	LASALLE BANK NATIONAL ASSN	IL	\$46,958	\$36,422	\$2,999	\$0	\$475	\$27,970	\$4,979	\$0	\$31
19	SUNTRUST BANK	GA	\$96,986	\$33,530	\$1,402	\$0	\$3,751	\$21,897	\$6,480	\$0	\$145
20	WACHOVIA BANK NATIONAL ASSN	NC	\$66,610	\$33,666	\$0	\$0	\$6,314	\$22,501	\$4,337	\$514	\$741
21	FIRST TENNESSEE BANK NA	TN	\$18,900	\$30,071	\$0	\$0	\$5,093	\$820	\$23,917	\$240	\$0
22	CITIBANK SOUTH DAKOTA N A	SD	\$17,964	\$22,170	\$8,150	\$0	\$0	\$13,402	\$618	\$0	\$0
23	NORTHERN TRUST CO	IL	\$31,103	\$19,895	\$0	\$0	\$18,059	\$1,592	\$245	\$0	\$2,893
24	CHASE BANK OF TEXAS NA	TX	\$24,553	\$16,415	\$0	\$0	\$1,790	\$5,841	\$8,784	\$0	\$1,268
25	HARRIS TRUST&SAVINGS BANK	IL	\$21,228	\$16,118	\$0	\$3	\$1,652	\$3,913	\$10,535	\$15	\$59
TOP 25 COMMERCIAL BANKS & TCs WITH DERIVATIVES			\$2,867,338	\$39,026,989	\$2,170,474	\$1,381,807	\$8,116,898	\$20,774,214	\$6,222,128	\$361,469	\$379,042
OTHER 391 COMMERCIAL BANKS & TCs WITH DERIVATIVES			\$1,854,116	\$298,497	\$9,939	\$9,914	\$29,900	\$183,114	\$65,414	\$217	\$3,121
TOTAL AMOUNTS FOR ALL 416 BKS & TCs WITH DERIVATIVES			\$4,721,454	\$39,325,486	\$2,180,413	\$1,391,720	\$8,146,797	\$20,957,328	\$6,287,542	\$361,685	\$382,163

Note: Currently, the Call Report does not differentiate credit derivatives by contract type. Credit derivatives have been included in the sum of total derivatives here.

Note: Before the first quarter of 1995 total derivatives included spot foreign exchange. Beginning in the first quarter, 1995, spot foreign exchange was reported separately.

Note: Numbers may not add due to rounding.

Data source: Call Report, schedule RC-L

TABLE 2

**NOTIONAL AMOUNT OF OFF BALANCE SHEET DERIVATIVE CONTRACTS OF THE 25  
HOLDING COMPANIES WITH THE MOST OFF BALANCE SHEET DERIVATIVES CONTRACTS  
JUNE 30, 2000, \$ MILLIONS  
NOTE: DATA ARE PRELIMINARY**

RANK	HOLDING COMPANY	STATE	TOTAL ASSETS	TOTAL DERIVATIVES	FUTURES (EXCH TR)	OPTIONS (EXCH TR)	FORWARDS (OTC)	SWAPS (OTC)	OPTIONS (OTC)	CREDIT DERIVATIVES (OTC)	SPOT FX
1	CHASE MANHATTAN CORPORATION, THE	NY	\$396,045	\$14,298,270	\$741,311	\$533,248	2894544	\$8,681,641	\$1,420,483	\$27,043	\$88,153
2	J.P. MORGAN & CO. INCORPORATED	NY	\$266,323	\$9,622,008	\$530,031	\$406,913	1035996	\$5,027,443	\$2,376,223	\$245,402	\$3,689
3	CITIGROUP INC.	NY	\$791,333	\$7,657,173	\$315,854	\$65,168	2415488	\$3,875,856	\$930,346	\$54,461	\$106,154
4	BANK OF AMERICA CORPORATION	NC	\$679,538	\$6,209,791	\$374,947	\$368,319	1240417	\$3,578,002	\$622,348	\$25,758	\$94,431
5	FIRST UNION CORPORATION	NC	\$257,994	\$969,271	\$237,068	\$133,335	90270	\$268,066	\$238,932	\$1,600	\$3,432
6	BANK ONE CORPORATION	IL	\$272,709	\$897,542	\$34,519	\$563	119355	\$521,843	\$220,960	\$302	\$13,319
7	FLEETBOSTON FINANCIAL CORPORATION	MA	\$181,259	\$378,875	\$21,400	\$96,282	49061	\$91,048	\$118,543	\$2,541	\$13,429
8	BANK OF NEW YORK COMPANY	NY	\$76,661	\$352,709	\$19,525	\$15,558	55146	\$104,812	\$155,942	\$1,725	\$7,925
9	HSBC NORTH AMERICA INC.	NY	\$84,826	\$267,625	\$42,404	\$56,431	83882	\$46,970	\$37,507	\$431	\$4,680
10	TAUNUS CORPORATION	NY	\$195,403	\$236,709	\$3,623	\$37,626	0	\$153,564	\$37,210	\$4,686	\$0
11	WELLS FARGO & COMPANY	CA	\$234,159	\$197,710	\$49,299	\$6,726	31434	\$62,588	\$47,358	\$305	\$1,039
12	STATE STREET CORPORATION	MA	\$64,632	\$169,439	\$163,399	\$1,475	0	\$2,737	\$1,827	\$0	3356
13	KEYCORP	OH	\$84,412	\$68,035	\$9,443	\$1,620	\$3,318	\$44,885	\$8,711	\$58	\$1,127
14	NATIONAL CITY CORPORATION	OH	\$84,601	\$59,226	\$12,663	\$1,040	\$4,396	\$32,161	\$8,853	\$113	\$256
15	MELLON FINANCIAL CORPORATION	PA	\$46,252	\$54,332	\$4,566	\$150	\$26,057	\$19,550	\$4,009	\$0	\$4,953
16	ABN AMRO NORTH AMERICA, INC.	IL	\$67,494	\$53,897	\$5,604	\$0	\$475	\$39,233	\$8,586	\$0	\$31
17	PNC FINANCIAL SERVICES GROUP, INC., THE	PA	\$75,747	\$57,310	\$1,994	\$8	\$5,173	\$21,607	\$24,121	\$4,408	\$854
18	SUNTRUST BANKS, INC.	GA	\$99,751	\$32,603	\$1,402	\$0	\$3,731	\$20,970	\$6,500	\$0	\$145
19	WACHOVIA CORPORATION	NC	\$70,811	\$32,396	\$20	\$0	\$6,352	\$21,176	\$4,334	\$514	\$741
20	FIRST TENNESSEE NATIONAL CORPORATION	TN	\$19,806	\$30,071	\$0	\$0	\$5,093	\$820	\$23,917	\$240	\$0
21	BANKMONT FINANCIAL CORP	DE	\$44,979	\$21,006	\$3,733	\$216	\$1,783	\$4,724	\$10,535	\$15	\$54
22	NORTHERN TRUST CORPORATION	IL	\$36,848	\$19,525	\$0	\$0	\$18,059	\$1,337	\$130	\$0	\$2,893
23	UNIONBANCAL CORPORATION	CA	\$34,014	\$14,297	\$0	\$0	\$2,075	\$4,795	\$7,427	\$0	\$593
24	COMERICA INCORPORATED	MI	\$41,104	\$13,251	\$0	\$0	\$1,874	\$10,847	\$486	\$44	\$279
25	US BANCORP	MN	\$86,174	\$11,642	\$15	\$0	\$2,435	\$7,904	\$1,288	\$0	\$308
<b>TOTALS FOR THE TOP 25 HOLDING COMPANIES WITH DERIVATIVES</b>			<b>\$4,292,873</b>	<b>\$41,724,713</b>	<b>\$2,572,820</b>	<b>\$1,724,678</b>	<b>\$80,821</b>	<b>\$22,644,579</b>	<b>\$6,316,576</b>	<b>\$369,646</b>	<b>\$351,841</b>

Note: Currently, the Y-9 report does not differentiate credit derivatives by contract type. Credit derivatives have been included in the sum of total derivatives.  
 Note: In previous quarters, total derivatives included spot foreign exchange. Beginning in the first quarter, 1995, spot foreign exchange is reported separately.  
 Note: Numbers may not add due to rounding.  
 Data source: Consolidated Financial Statements for Bank Holding Companies, FR Y-9, schedule HC-F

TABLE 3

**DISTRIBUTION OF OFF BALANCE SHEET DERIVATIVES CONTRACTS OF THE 25  
COMMERCIAL BANKS AND TRUST COMPANIES WITH THE MOST OFF BALANCE SHEET DERIVATIVE CONTRACTS  
JUNE 30, 2000, \$ MILLIONS, RATIOS IN PERCENT  
NOTE: DATA ARE PRELIMINARY**

RANK	BANK NAME	STATE	TOTAL ASSETS	TOTAL DERIVATIVES	PERCENT EXCH TRADED CONTRACTS	PERCENT OTC CONTRACTS	PERCENT INT RATE CONTRACTS	PERCENT FOREIGN EXCH CONTRACTS	PERCENT OTHER CONTRACTS	PERCENT CREDIT DERIVATIVES
					(%)	(%)	(%)	(%)	(%)	(%)
1	CHASE MANHATTAN BANK	NY	\$320,476	\$13,927,622	7.2	92.8	86.5	12.0	0.6	0.6
2	MORGAN GUARANTY TR CO OF NY	NY	\$173,606	\$9,535,288	9.1	90.9	79.9	12.4	4.6	0.6
3	BANK OF AMERICA NA	NC	\$604,683	\$6,990,993	10.5	89.5	82.3	14.4	2.0	0.9
4	CITIBANK N A	NY	\$356,826	\$4,702,375	4.3	95.7	55.3	41.2	2.1	0.4
5	FIRST UNION NATIONAL BANK	NC	\$236,103	\$964,552	37.6	62.4	96.7	2.7	0.5	0.0
6	BANK ONE NATIONAL ASSN	IL	\$95,795	\$892,706	3.7	96.3	86.9	11.9	0.9	0.3
7	FLEET NATIONAL BANK	RI	\$147,334	\$377,209	30.7	69.3	82.5	16.7	0.1	0.1
8	BANK OF NEW YORK	NY	\$74,186	\$354,118	9.9	90.1	71.9	27.7	0.0	0.0
9	HSBC BANK USA	NY	\$81,816	\$269,214	36.7	63.3	63.1	27.6	0.2	9.0
10	WELLS FARGO BANK NA	CA	\$101,188	\$184,528	30.3	69.7	97.5	2.3	0.0	0.0
11	BANKERS TRUST CO	NY	\$44,170	\$183,067	0.0	100.0	53.2	36.2	7.3	2.6
12	STATE STREET BANK&TRUST CO	MA	\$60,485	\$168,360	3.3	96.7	5.8	94.2	0.0	0.0
13	KEYBANK NATIONAL ASSN	OH	\$75,908	\$61,715	17.9	82.1	91.4	8.2	0.3	0.0
14	MELLON BANK NATIONAL ASSN	PA	\$37,598	\$56,206	7.8	92.2	52.7	45.9	1.3	0.1
15	NATIONAL CITY BANK	OH	\$33,220	\$54,639	23.2	76.8	98.0	1.6	0.1	0.0
16	PNC BANK NATIONAL ASSN	PA	\$68,110	\$58,163	3.4	96.6	86.7	5.7	0.1	0.0
17	CHASE MANHATTAN BANK USA NA	DE	\$31,532	\$37,947	0.1	99.9	98.6	0.1	1.4	0.0
18	LASALLE BANK NATIONAL ASSN	IL	\$46,958	\$36,422	8.2	91.8	97.3	2.6	0.1	0.0
19	SUNTRUST BANK	GA	\$96,986	\$33,530	4.2	95.8	91.8	6.3	1.9	0.1
20	WACHOVIA BANK NATIONAL ASSN	NC	\$66,610	\$33,666	0.0	100.0	76.8	21.1	0.5	0.0
21	FIRST TENNESSEE BANK NA	TN	\$18,900	\$30,071	0.0	100.0	99.2	0.0	0.0	0.0
22	CITIBANK SOUTH DAKOTA N A	SD	\$17,964	\$22,170	36.8	63.2	100.0	0.0	0.0	0.0
23	NORTHERN TRUST CO	IL	\$31,103	\$19,895	0.0	100.0	9.1	90.9	0.0	0.0
24	CHASE BANK OF TEXAS NA	TX	\$24,553	\$16,415	0.0	100.0	80.5	12.5	6.9	0.1
25	HARRIS TRUST&SAVINGS BANK	IL	\$21,228	\$16,118	0.0	100.0	89.2	10.6	0.2	0.0
TOP 25 COMMERCIAL BANKS & TCs WITH DERIVATIVES			\$2,867,338	\$39,026,989	\$3,552,281	\$35,474,708	\$31,156,369	\$6,465,158	\$1,043,993	\$361,469
OTHER 391 COMMERCIAL BANKS & TCs WITH DERIVATIVES			\$1,854,116	\$298,497	\$19,852	\$278,645	\$271,917	\$23,673	\$2,691	\$217
TOTAL AMOUNTS FOR ALL 416 BKS & TCs WITH DERIVATIVES			\$4,721,454	\$39,325,486	\$3,572,133	\$35,753,353	\$31,428,285	\$6,488,831	\$1,046,685	\$361,685
TOP 25 COMMERCIAL BANKS & TC: % OF ALL 416 BKS & TCs WITH DERIVATIVES				99.2	9.0	90.2	79.2	16.4	2.7	0.9
OTHER 391 COMMERCIAL BANKS & TCS: % OF ALL 416 BKS & TCs WITH DERIVATIVES				0.8	0.1	0.7	0.7	0.1	0.0	0.0
TOTAL AMOUNTS FOR ALL 416 BKS & TCS: % OF ALL 416 BKS & TCs WITH DERIVATIVES				100.0	9.1	90.9	79.9	16.5	2.7	0.9
<p>Note: Currently, the Call Report does not differentiate credit derivatives by over the counter or exchange traded. Credit derivatives have been included in the "over the counter" category as well as in the sum of total derivatives here.</p> <p>Note: "Foreign Exchange" does not include spot fx.</p> <p>Note: "Other" is defined as the sum of commodity and equity contracts.</p> <p>Note: Before the first quarter of 1995 total derivatives included spot foreign exchange. Beginning in the first quarter, 1995, spot foreign exchange was reported separately.</p> <p>Note: Numbers may not add due to rounding.</p> <p>Data source: Call Report, schedule RC-L</p>										

TABLE 4

**CREDIT EQUIVALENT EXPOSURE OF THE 25  
COMMERCIAL BANKS AND TRUST COMPANIES WITH THE MOST OFF BALANCE SHEET DERIVATIVES CONTRACTS  
JUNE 30, 2000, \$ MILLIONS, RATIOS IN PERCENT  
NOTE: DATA ARE PRELIMINARY**

RANK	BANK NAME	STATE	TOTAL ASSETS	TOTAL DERIVATIVES	BILATERALLY NETTED CURRENT EXPOSURE	FUTURE EXPOSURE (NEW RBC ADD ON)	TOTAL CREDIT EXPOSURE FROM ALL CONTRACTS	TOTAL CREDIT EXPOSURE TO CAPITAL RATIO (%)
1	CHASE MANHATTAN BANK	NY	\$320,476	\$13,927,622	\$33,275	\$82,942	\$116,217	428.6
2	MORGAN GUARANTY TR CO OF NY	NY	\$173,606	\$9,535,288	\$41,353	\$72,684	\$114,037	817.6
3	BANK OF AMERICA NA	NC	\$604,683	\$6,990,993	\$32,608	\$55,839	\$88,447	158.9
4	CITIBANK N A	NY	\$356,826	\$4,702,375	\$19,227	\$35,960	\$55,187	165.7
5	FIRST UNION NATIONAL BANK	NC	\$236,103	\$964,552	\$4,318	\$3,164	\$7,482	35.4
6	BANK ONE NATIONAL ASSN	IL	\$95,795	\$892,706	\$3,200	\$6,504	\$9,704	105.7
7	FLEET NATIONAL BANK	RI	\$147,334	\$377,209	\$1,664	\$1,454	\$3,118	18.2
8	BANK OF NEW YORK	NY	\$74,186	\$354,118	\$764	\$778	\$1,542	21.6
9	HSBC BANK USA	NY	\$81,816	\$269,214	\$955	\$1,549	\$2,504	27.6
10	WELLS FARGO BANK NA	CA	\$101,188	\$184,528	\$483	\$420	\$903	8.0
11	BANKERS TRUST CO	NY	\$44,170	\$183,067	\$1,068	\$4,264	\$5,332	81.2
12	STATE STREET BANK&TRUST CO	MA	\$60,485	\$168,360	\$1,580	\$1,730	\$3,310	105.4
13	KEYBANK NATIONAL ASSN	OH	\$75,908	\$61,715	\$531	\$300	\$831	10.1
14	MELLON BANK NATIONAL ASSN	PA	\$37,598	\$56,206	\$600	\$374	\$974	21.4
15	NATIONAL CITY BANK	OH	\$33,220	\$54,639	\$549	\$270	\$819	25.0
16	PNC BANK NATIONAL ASSN	PA	\$68,110	\$58,163	\$366	\$235	\$602	9.2
17	CHASE MANHATTAN BANK USA NA	DE	\$31,532	\$37,947	\$56	\$131	\$187	4.8
18	LASALLE BANK NATIONAL ASSN	IL	\$46,958	\$36,422	\$60	\$287	\$347	7.5
19	SUNTRUST BANK	GA	\$96,986	\$33,530	\$464	\$235	\$698	7.3
20	WACHOVIA BANK NATIONAL ASSN	NC	\$66,610	\$33,666	\$405	\$354	\$759	8.6
21	FIRST TENNESSEE BANK NA	TN	\$18,900	\$30,071	\$10	\$110	\$119	7.9
22	CITIBANK SOUTH DAKOTA N A	SD	\$17,964	\$22,170	\$1	\$66	\$67	3.0
23	NORTHERN TRUST CO	IL	\$31,103	\$19,895	\$170	\$160	\$330	13.7
24	CHASE BANK OF TEXAS NA	TX	\$24,553	\$16,415	\$256	\$125	\$382	15.8
25	HARRIS TRUST&SAVINGS BANK	IL	\$21,228	\$16,118	\$63	\$70	\$133	7.3
TOP 25 COMMERCIAL BANKS & TCs WITH DERIVATIVES			\$2,867,338	\$39,026,989	\$144,027	\$270,003	\$414,030	Average% 84.63
OTHER 391 COMMERCIAL BANKS & TCs WITH DERIVATIVES			\$1,854,116	\$298,497	\$2,095	\$1,786	\$3,882	N/A
TOTAL AMOUNTS FOR ALL 416 BKS & TCs WITH DERIVATIVES			\$4,721,454	\$39,325,486	\$146,122	\$271,789	\$417,912	6.39
Commercial banks also hold on-balance sheet assets in volumes that are multiples of bank capital. For example:								
			EXPOSURE TO RISK BASED CAPITAL:					
EXPOSURES FROM OTHER ASSETS			ALL COMMERCIAL BANKS					
ALL COMMERCIAL BANKS			ALL BANKS					
1-4 FAMILY MORTGAGES			156%					
C&I LOANS			179%					
SECURITIES NOT IN TRADING ACCOUNT			181%					
Note: The numbers reported above for future credit exposures reflect gross add-ons.								
Note: The total credit exposure to capital ratio is calculated using risk based capital (tier one plus tier two capital).								
Note: Currently, the Call Report does not differentiate credit derivatives by contract type. Credit derivatives have been included in the sum of total derivatives here.								
Note: Before the first quarter of 1995 total derivatives included spot foreign exchange. Beginning in the first quarter, 1995, spot foreign exchange was reported separately.								
Note: Numbers may not add due to rounding.								
Source: Call Report Schedule RC-R								

TABLE 5

**NOTIONAL AMOUNTS OF OFF BALANCE SHEET DERIVATIVES CONTRACTS HELD FOR TRADING OF THE 7  
COMMERCIAL BANKS AND TRUST COMPANIES WITH THE MOST OFF BALANCE SHEET DERIVATIVES CONTRACTS  
JUNE 30, 2000, \$ MILLIONS, RATIOS IN PERCENT  
NOTE: DATA ARE PRELIMINARY**

<b>RANK</b>	<b>BANK NAME</b>	<b>STATE</b>	<b>TOTAL ASSETS</b>	<b>TOTAL DERIVATIVES</b>	<b>TOTAL HELD FOR TRADING &amp; MTM</b>	<b>% HELD FOR TRADING &amp; MTM</b>	<b>TOTAL NOT TRADED MTM &amp; NOT MTM</b>	<b>% NOT TRADED MTM &amp; NOT MTM</b>
1	CHASE MANHATTAN BANK	NY	\$320,476	\$13,900,579	\$13,639,615	98.1	\$260,964	1.9
2	MORGAN GUARANTY TR CO OF NY	NY	\$173,606	\$9,289,886	\$9,231,340	99.4	\$58,546	0.6
3	BANK OF AMERICA NA	NC	\$604,683	\$6,963,297	\$6,839,165	98.2	\$124,132	1.8
4	CITIBANK N A	NY	\$356,826	\$4,654,100	\$4,494,353	96.6	\$159,610	3.4
5	FIRST UNION NATIONAL BANK	NC	\$236,103	\$962,952	\$626,801	65.1	\$336,151	34.9
6	BANK ONE NATIONAL ASSN	IL	\$95,795	\$892,529	\$885,843	99.3	\$6,687	0.7
7	FLEET NATIONAL BANK	RI	\$147,334	\$374,668	\$303,028	80.9	\$70,981	18.9
<b>TOP 7 COMMERCIAL BANKS &amp; TCs WITH DERIVATIVES</b>			<b>\$1,934,823</b>	<b>\$37,038,011</b>	<b>\$36,020,145</b>	<b>97.3</b>	<b>\$1,017,071</b>	<b>2.7</b>
OTHER 409 COMMERCIAL BANKS & TCs WITH DERIVATIVES			\$2,786,631	\$1,925,789	\$1,255,873	65.2	\$667,116	34.6
<b>TOP 25 COMMERCIAL BANKS &amp; TCs WITH DERIVATIVES</b>			<b>\$2,867,338</b>	<b>\$38,665,520</b>	<b>\$37,202,619</b>	<b>96.2</b>	<b>\$1,459,851</b>	<b>3.8</b>
OTHER 391 COMMERCIAL BANKS & TCs WITH DERIVATIVES			\$1,854,116	\$298,281	\$73,399	24.6	\$224,336	75.2
<b>TOTAL AMOUNTS FOR ALL 416 BKS &amp; TCs WITH DERIVATIVES</b>			<b>\$4,721,454</b>	<b>\$38,963,801</b>	<b>\$37,276,018</b>	<b>95.7</b>	<b>\$1,684,187</b>	<b>4.3</b>

Note: Currently, the Call Report does not differentiate between traded and non-traded credit derivatives. Credit derivatives have been excluded from the sum of total derivatives here.

Note: In previous quarters, total derivatives included spot foreign exchange. Beginning in the first quarter, 1995, spot foreign exchange is reported separately.

Note: Numbers may not add due to rounding.

Data source: Call Report, schedule RC-L



TABLE 6

**GROSS FAIR VALUES OF OFF BALANCE SHEET DERIVATIVE CONTRACTS OF THE 7  
COMMERCIAL BANKS AND TRUST COMPANIES WITH THE MOST OFF BALANCE SHEET DERIVATIVE CONTRACTS  
JUNE 30, 2000, \$ MILLIONS  
NOTE: DATA ARE PRELIMINARY**

RANK	BANK NAME	STATE	TOTAL ASSETS	TOTAL DERIVATIVES	TRADED :	TRADED :	NOT TRADED :	NOT TRADED :
					(MTM) GROSS POSITIVE FAIR VALUE*	(MTM) GROSS NEGATIVE FAIR VALUE**	(MTM & NOT MTM) GROSS POSITIVE FAIR VALUE*	(MTM & NOT MTM) GROSS NEGATIVE FAIR VALUE**
1	CHASE MANHATTAN BANK	NY	\$320,476	\$13,900,579	\$121,460	\$117,848	\$745	\$963
2	MORGAN GUARANTY TR CO OF NY	NY	\$173,606	\$9,289,886	\$131,686	\$131,485	\$592	\$327
3	BANK OF AMERICA NA	NC	\$604,683	\$6,963,297	\$78,653	\$74,330	\$515	\$1,770
4	CITIBANK N A	NY	\$356,826	\$4,654,100	\$49,264	\$47,919	\$370	\$722
5	FIRST UNION NATIONAL BANK	NC	\$236,103	\$962,952	\$4,432	\$4,387	\$1,441	\$1,107
6	BANK ONE NATIONAL ASSN	IL	\$95,795	\$892,529	\$9,890	\$9,866	\$98	\$46
7	FLEET NATIONAL BANK	RI	\$147,334	\$374,668	\$1,534	\$1,641	\$682	\$637
TOP 7 COMMERCIAL BANKS & TCs WITH DERIVATIVES			\$1,934,823	\$37,038,011	\$396,920	\$387,476	\$4,443	\$5,572
OTHER 409 COMMERCIAL BANKS & TCs WITH DERIVATIVES			\$2,786,631	\$1,925,789	\$14,950	\$14,819	\$4,106	\$5,831
TOTAL AMOUNTS FOR ALL 416 BKS & TCs WITH DERIVATIVES			\$4,721,454	\$38,963,801	\$411,870	\$402,295	\$8,549	\$11,403

Note: Currently, the Call Report does not differentiate credit derivatives by gross negative and positive fair values. Credit derivatives have been excluded from the sum of total derivatives here.

Note: Before the first quarter of 1995 total derivatives included spot foreign exchange. Beginning in the first quarter, 1995, spot foreign exchange was reported separately.

\*Market value of contracts that have a positive fair value as of the end of the second quarter, 2000.

\*\*Market value of contracts that have a negative fair value as of the end of the second quarter, 2000.

Note: Numbers may not sum due to rounding.

Data source: Call Report, schedule RC-L

TABLE 7

**TRADING REVENUE FROM CASH INSTRUMENTS AND OFF BALANCE SHEET DERIVATIVES OF THE 7  
COMMERCIAL BANKS AND TRUST COMPANIES WITH THE MOST OFF BALANCE SHEET DERIVATIVE CONTRACTS  
JUNE 30, 2000, \$ MILLIONS**

NOTE: REVENUE FIGURES ARE FOR SECOND QUARTER (NOT YEAR-TO-DATE)  
DATA ARE PRELIMINARY

RANK	BANK NAME	STATE	TOTAL ASSETS	TOTAL DERIVATIVES	TOTAL TRADING REV FROM CASH & OFF BAL SHEET POSITIONS	TRADING REV FROM INT RATE POSITIONS	TRADING REV FROM FOREIGN EXCH POSITIONS	TRADING REV FROM EQUITY POSITIONS	TRADING REV FROM COMMOD & OTH POSITIONS
1	CHASE MANHATTAN BANK	NY	\$320,476	\$13,900,579	\$707	\$281	\$258	\$26	\$142
2	MORGAN GUARANTY TR CO OF NY	NY	\$173,606	\$9,289,886	\$693	\$426	\$50	\$201	\$16
3	BANK OF AMERICA NA	NC	\$604,683	\$6,963,297	\$251	\$49	\$130	\$48	\$24
4	CITIBANK N A	NY	\$356,826	\$4,654,100	\$706	\$64	\$484	\$158	\$0
5	FIRST UNION NATIONAL BANK	NC	\$236,103	\$962,952	\$78	(\$17)	\$25	\$69	\$1
6	BANK ONE NATIONAL ASSN	IL	\$95,795	\$892,529	\$31	\$3	\$19	\$5	\$3
7	FLEET NATIONAL BANK	RI	\$147,334	\$374,668	\$94	\$42	\$52	\$0	\$0
TOP 7 COMMERCIAL BANKS & TCs WITH DERIVATIVES			\$1,934,823	\$37,038,011	\$2,559	\$848	\$1,018	\$507	\$186
OTHER 409 COMMERCIAL BANKS & TCs WITH DERIVATIVES			\$2,786,631	\$1,925,789	\$475	\$145	\$318	\$15	(\$3)
TOTAL AMOUNTS FOR ALL 416 BKS & TCs WITH DERIVATIVES			\$4,721,454	\$38,963,801	\$3,034	\$993	\$1,336	\$522	\$183

Note: Currently, the Call Report does not include trading revenues from credit derivatives. Credit derivatives have been excluded from the sum of total derivatives here.

Note: Trading revenue is defined here as "trading revenue from cash instruments and off balance sheet derivative instruments."

Note: Before the first quarter of 1995 total derivatives included spot foreign exchange. Beginning in the first quarter, 1995, spot foreign exchange was reported separately.

Note: Numbers may not sum due to rounding.

Data source: Call Report, schedule RC-I

TABLE 8

**NOTIONAL AMOUNT OF OFF BALANCE SHEET DERIVATIVES CONTRACTS BY CONTRACT TYPE & MATURITY FOR THE 7  
COMMERCIAL BANKS AND TRUST COMPANIES WITH THE MOST OFF BALANCE DERIVATIVE CONTRACTS  
JUNE 30, 2000, \$ MILLIONS  
NOTE: DATA ARE PRELIMINARY**

RANK	BANK NAME	STATE	TOTAL ASSETS	TOTAL DERIVATIVES	INT RATE MATURITY < 1 YR	INT RATE MATURITY 1 - 5 YRS	INT RATE MATURITY > 5 YRS	INT RATE ALL MATURITIES	FOREIGN EXCH MATURITY < 1 YR	FOREIGN EXCH MATURITY 1 - 5 YRS	FOREIGN EXCH MATURITY > 5 YRS	FOREIGN EXCH ALL MATURITIES
1	CHASE MANHATTAN BANK	NY	\$320,476	\$13,900,579	\$4,226,588	\$4,247,537	\$1,780,716	\$10,254,841	\$1,220,150	\$172,508	\$90,530	\$1,483,188
2	MORGAN GUARANTY TR CO OF NY	NY	\$173,606	\$9,289,886	\$1,263,351	\$2,249,829	\$1,566,280	\$5,079,460	\$622,559	\$164,526	\$105,876	\$892,960
3	BANK OF AMERICA NA	NC	\$604,683	\$6,963,297	\$1,971,774	\$1,528,172	\$1,136,341	\$4,636,287	\$800,024	\$71,493	\$34,265	\$905,782
4	CITIBANK N A	NY	\$356,826	\$4,654,100	\$1,278,795	\$559,284	\$350,444	\$2,188,523	\$1,530,821	\$106,121	\$42,117	\$1,679,059
5	FIRST UNION NATIONAL BANK	NC	\$236,103	\$962,952	\$226,562	\$132,761	\$125,309	\$484,632	\$11,355	\$4,285	\$1,433	\$17,073
6	BANK ONE NATIONAL ASSN	IL	\$95,795	\$892,529	\$156,864	\$281,172	\$183,280	\$621,315	\$81,996	\$13,008	\$4,717	\$99,721
7	FLEET NATIONAL BANK	RI	\$147,334	\$374,668	\$33,565	\$99,272	\$21,294	\$154,131	\$45,371	\$2,666	\$429	\$48,466
TOP 7 COMMERCIAL BANKS & TCs WITH DERIVATIVES			\$1,934,823	\$37,038,011	\$9,157,500	\$9,098,027	\$5,163,664	\$23,419,190	\$4,312,276	\$534,606	\$279,367	\$5,126,249
OTHER 409 COMMERCIAL BANKS & TCs WITH DERIVATIVES			\$2,786,631	\$1,925,789	\$344,696	\$475,901	\$188,878	\$1,009,475	\$267,385	\$54,300	\$7,181	\$328,866
TOTAL AMOUNTS FOR ALL 416 BKS & TCs WITH DERIVATIVES			\$4,721,454	\$38,963,801	\$9,502,196	\$9,573,927	\$5,352,542	\$24,428,665	\$4,579,660	\$588,907	\$286,548	\$5,455,114

Note: Currently, the Call Report does not include maturity breakouts for credit derivatives. Credit derivatives have been excluded from the sum of total derivatives here.

Note: Before the first quarter of 1995 total derivatives included spot foreign exchange. Beginning in the first quarter, 1995, spot foreign exchange was reported separately.

Note: Figures above exclude foreign exchange contracts with an original maturity of 14 days or less, futures contracts, written options, basis swaps, and any contracts not subject to risk-based capital requirements.

Therefore, the total notional amount of derivatives by maturity will not add to the total derivatives figure in this table.

Note: Numbers may not add due to rounding.

Data source: Call Report, schedule RC-R

TABLE 9

**NOTIONAL AMOUNT OF OFF BALANCE SHEET DERIVATIVES CONTRACTS BY CONTRACT TYPE & MATURITY FOR THE 7  
COMMERCIAL BANKS AND TRUST COMPANIES WITH THE MOST OFF BALANCE DERIVATIVE CONTRACTS  
JUNE 30, 2000, \$ MILLIONS  
NOTE: DATA ARE PRELIMINARY**

RANK	BANK NAME	STATE	TOTAL ASSETS	TOTAL DERIVATIVES	GOLD MATURITY < 1 YR	GOLD MATURITY 1 - 5 YRS	GOLD MATURITY > 5 YRS	GOLD ALL MATURITIES	PREC METALS MATURITY < 1 YR	PREC METALS MATURITY 1 - 5 YRS	PREC METALS MATURITY > 5 YRS	PREC METALS ALL MATURITIES
1	CHASE MANHATTAN BANK	NY	\$320,476	\$13,900,579	\$11,955	\$16,589	\$6,470	\$35,014	\$301	\$65	\$0	\$366
2	MORGAN GUARANTY TR CO OF NY	NY	\$173,606	\$9,289,886	\$9,216	\$17,676	\$2,849	\$29,741	\$452	\$435	\$0	\$887
3	BANK OF AMERICA NA	NC	\$604,683	\$6,963,297	\$0	\$0	\$0	\$0	\$225	\$36	\$0	\$261
4	CITIBANK N A	NY	\$356,826	\$4,654,100	\$4,584	\$3,966	\$2,864	\$11,414	\$92	\$5	\$0	\$97
5	FIRST UNION NATIONAL BANK	NC	\$236,103	\$962,952	\$0	\$0	\$0	\$0	\$0	\$0	\$0	\$0
6	BANK ONE NATIONAL ASSN	IL	\$95,795	\$892,529	\$0	\$0	\$0	\$0	\$0	\$0	\$0	\$0
7	FLEET NATIONAL BANK	RI	\$147,334	\$374,668	\$287	\$0	\$0	\$287	\$78	\$0	\$0	\$78
TOP 7 COMMERCIAL BANKS & TCs WITH DERIVATIVES			\$1,934,823	\$37,038,011	\$26,042	\$38,231	\$12,183	\$76,456	\$1,148	\$541	\$0	\$1,689
OTHER 409 COMMERCIAL BANKS & TCs WITH DERIVATIVES			\$2,786,631	\$1,925,789	\$11,840	\$3,259	\$584	\$15,682	\$1,756	\$63	\$0	\$1,819
TOTAL AMOUNTS FOR ALL 416 BKS & TCs WITH DERIVATIVES			\$4,721,454	\$38,963,801	\$37,882	\$41,490	\$12,766	\$92,138	\$2,905	\$603	\$0	\$3,508

Note: Currently, the Call Report does not include maturity breakouts for credit derivatives. Credit derivatives have been excluded from the sum of total derivatives here.

Note: Before the first quarter of 1995 total derivatives included spot foreign exchange. Beginning in the first quarter, 1995, spot foreign exchange was reported separately.

Note: Figures above exclude foreign exchange contracts with an original maturity of 14 days or less, futures contracts, written options, basis swaps, and any contracts not subject to risk-based capital requirements.

Therefore, the total notional amount of derivatives by maturity will not add to the total derivatives figure in this table.

Note: Numbers may not add due to rounding.

Data source: Call Report, schedule RC-R

TABLE 10

**NOTIONAL AMOUNT OF OFF BALANCE SHEET DERIVATIVES CONTRACTS BY CONTRACT TYPE & MATURITY FOR THE 7  
COMMERCIAL BANKS AND TRUST COMPANIES WITH THE MOST OFF BALANCE DERIVATIVE CONTRACTS  
JUNE 30, 2000, \$ MILLIONS  
NOTE: DATA ARE PRELIMINARY**

RANK	BANK NAME	STATE	TOTAL ASSETS	TOTAL DERIVATIVES	OTHER COMM MATURITY < 1 YR	OTHER COMM MATURITY 1 - 5 YRS	OTHER COMM MATURITY > 5 YRS	OTHER COMM ALL MATURITIES	EQUITY MATURITY < 1 YR	EQUITY MATURITY 1 - 5 YRS	EQUITY MATURITY > 5 YRS	EQUITY ALL MATURITIES
1	CHASE MANHATTAN BANK	NY	\$320,476	\$13,900,579	\$8,727	\$17,238	\$1,704	\$27,669	\$15,170	\$21,439	\$951	\$37,560
2	MORGAN GUARANTY TR CO OF NY	NY	\$173,606	\$9,289,886	\$1,032	\$3,623	\$3,158	\$7,813	\$85,147	\$82,894	\$15,441	\$183,483
3	BANK OF AMERICA NA	NC	\$604,683	\$6,963,297	\$41,124	\$16,320	\$12,361	\$69,805	\$41,382	\$73,141	\$7,307	\$121,830
4	CITIBANK N A	NY	\$356,826	\$4,654,100	\$1,369	\$2,573	\$765	\$4,707	\$22,149	\$20,471	\$1,410	\$44,030
5	FIRST UNION NATIONAL BANK	NC	\$236,103	\$962,952	\$9	\$0	\$0	\$9	\$482	\$1,942	\$1	\$2,425
6	BANK ONE NATIONAL ASSN	IL	\$95,795	\$892,529	\$1,018	\$744	\$98	\$1,859	\$3,055	\$1,693	\$6	\$4,753
7	FLEET NATIONAL BANK	RI	\$147,334	\$374,668	\$0	\$0	\$0	\$0	\$109	\$46	\$0	\$155
TOP 7 COMMERCIAL BANKS & TCs WITH DERIVATIVES			\$1,934,823	\$37,038,011	\$53,278	\$40,498	\$18,086	\$111,862	\$167,494	\$201,626	\$25,116	\$394,236
OTHER 409 COMMERCIAL BANKS & TCs WITH DERIVATIVES			\$2,786,631	\$1,925,789	\$2,837	\$2,072	\$11	\$4,920	\$10,297	\$2,891	\$2,673	\$15,861
TOTAL AMOUNTS FOR ALL 416 BKS & TCs WITH DERIVATIVES			\$4,721,454	\$38,963,801	\$56,115	\$42,570	\$18,097	\$116,782	\$177,791	\$204,517	\$27,789	\$410,097

Note: Currently, the Call Report does not include maturity breakouts for credit derivatives. Credit derivatives have been excluded from the sum of total derivatives here.

Note: Before the first quarter of 1995 total derivatives included spot foreign exchange. Beginning in the first quarter, 1995, spot foreign exchange was reported separately.

Note: Figures above exclude foreign exchange contracts with an original maturity of 14 days or less, futures contracts, written options, basis swaps, and any contracts not subject to risk-based capital requirements.

Therefore, the total notional amount of derivatives by maturity will not add to the total derivatives figure in this table.

Note: Numbers may not add due to rounding.

Data source: Call Report, schedule RC-R