

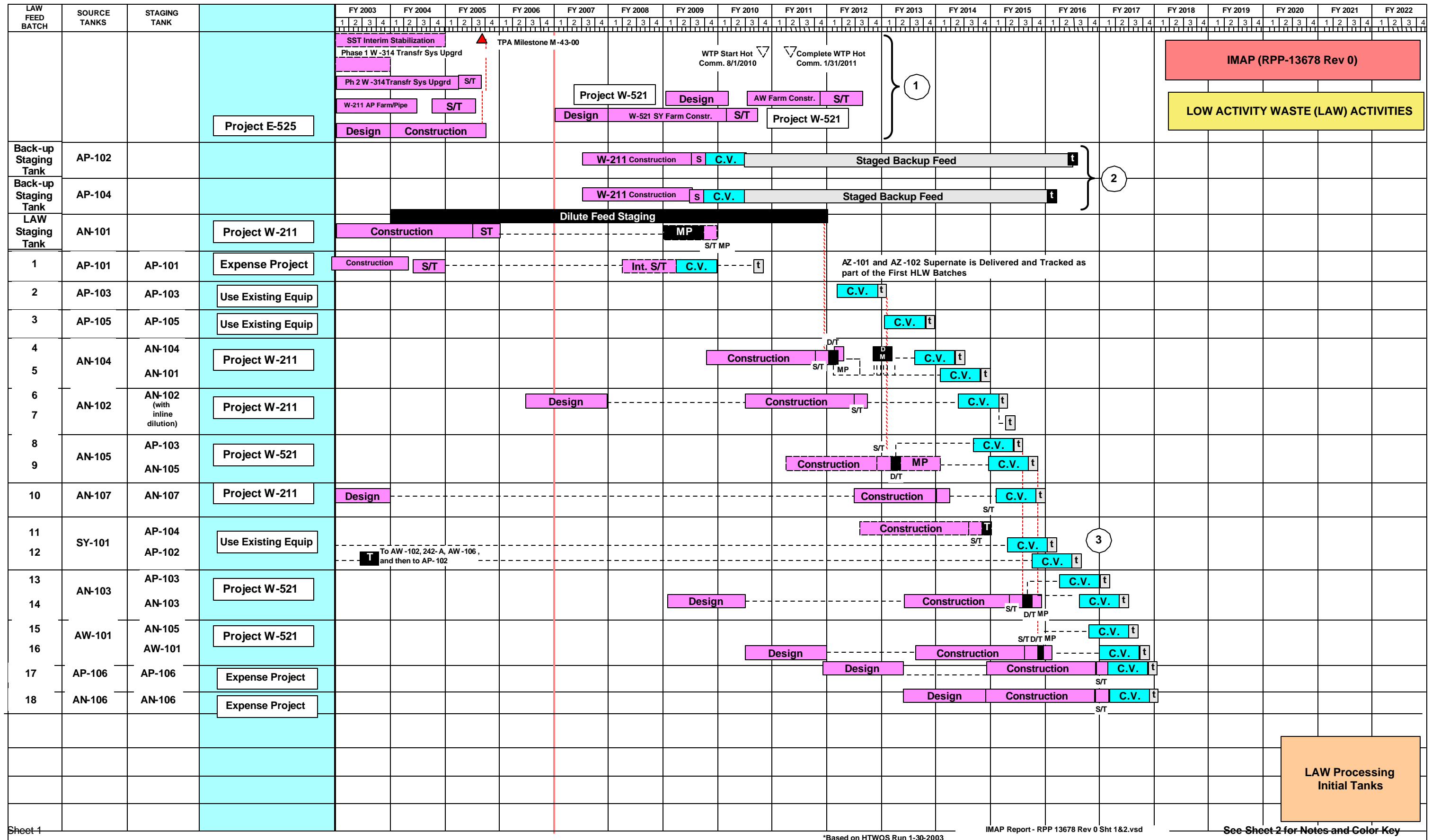
APPENDIX D

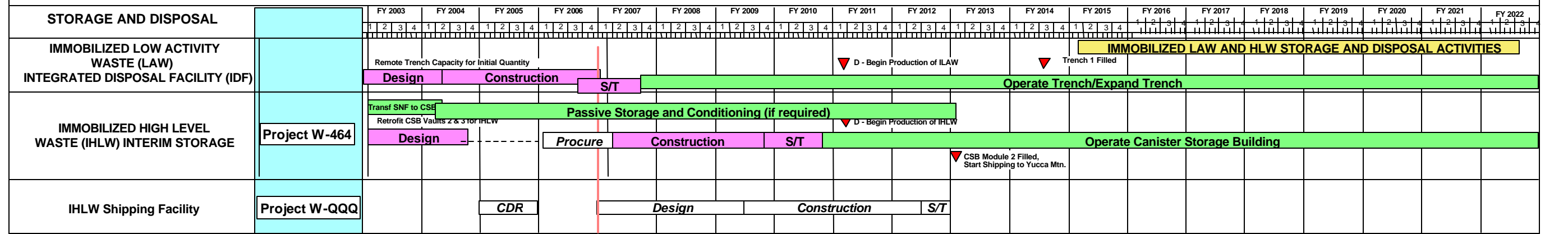
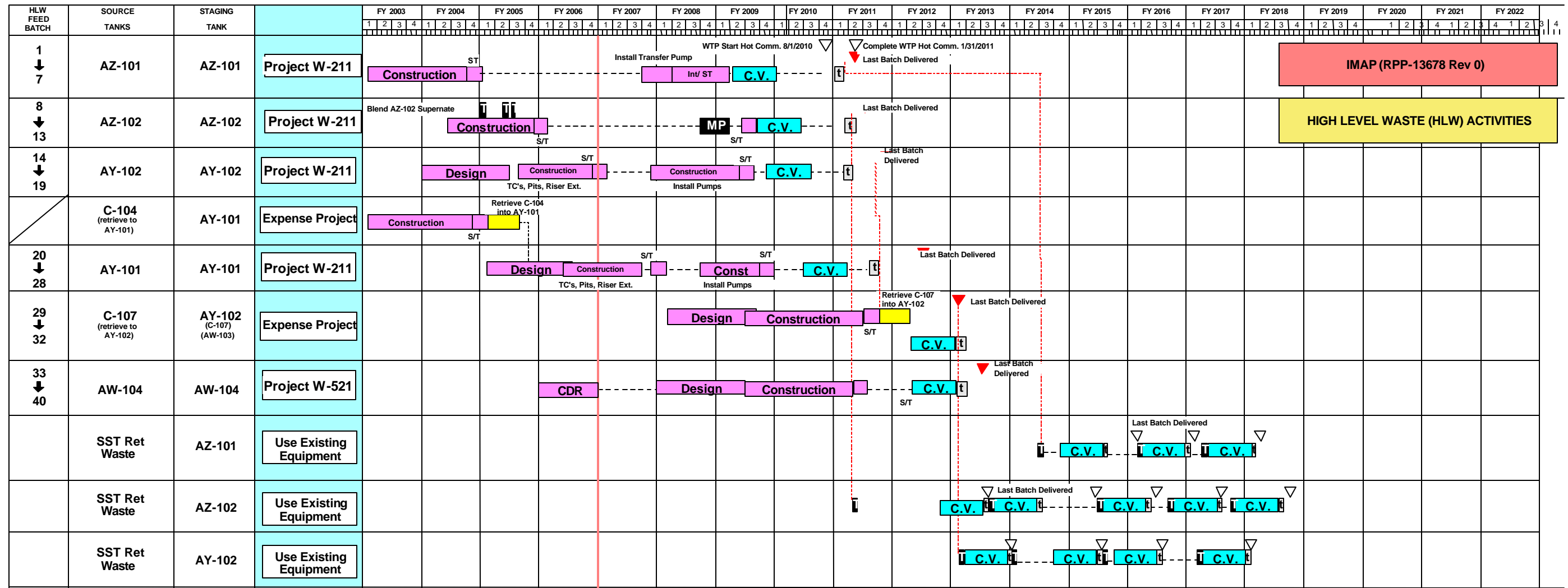
**MISSION SUMMARY SCHEDULE FOR INTEGRATED MISSION
ACCELERATION PLAN**

INTRODUCTION TO APPENDIX D

ORP and CH2M HILL agreed on an assumption associated with the IHLW storage facility that indicated that the CSB would be upgraded and one follow-on facility would be constructed. The assumed shipping date would be tied to the follow-on facility need date. The schedule dates for the follow-on IHLW storage facility and the IHLW shipping facility represent planning associated with a 2007 WTP startup at the higher production rates used to model this IMAP (rather than 2010). Actual predicted need dates at the time of IMAP, Rev. 0 publication are:

–	CSB filled (880 canisters)	11/2012
–	Follow-on (second IHLW facility)	11/2012
–	Fill date for current design concept	1/2020
–	Shipping facility startup	1/2020





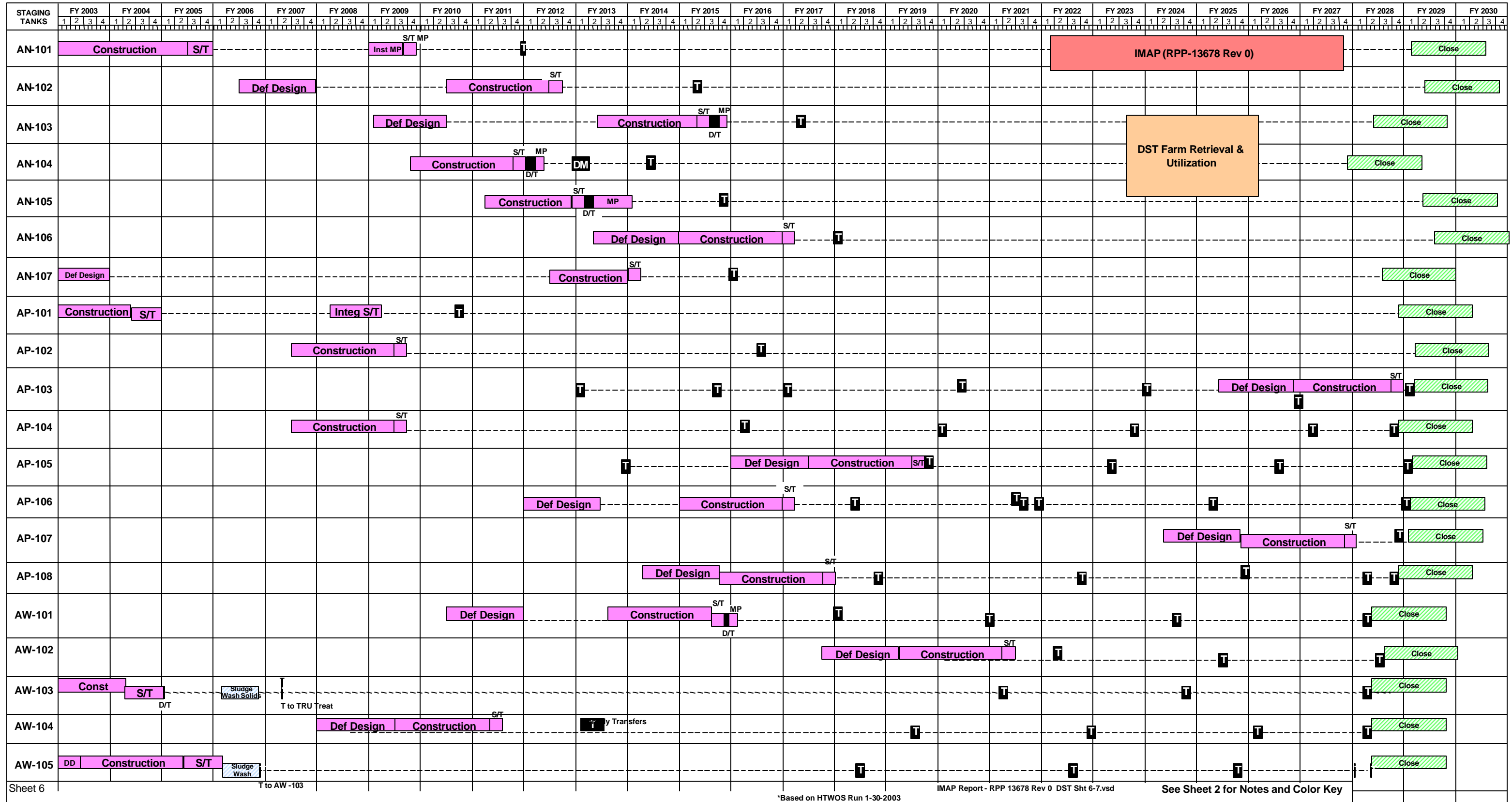
- ① Near-Term Projects that affect Waste Feed Staging.
- ② Sampled and Analyzed to be used as backup LAW Feed.
- ③ Used Existing SY-101 Systems to Retrieve Early.

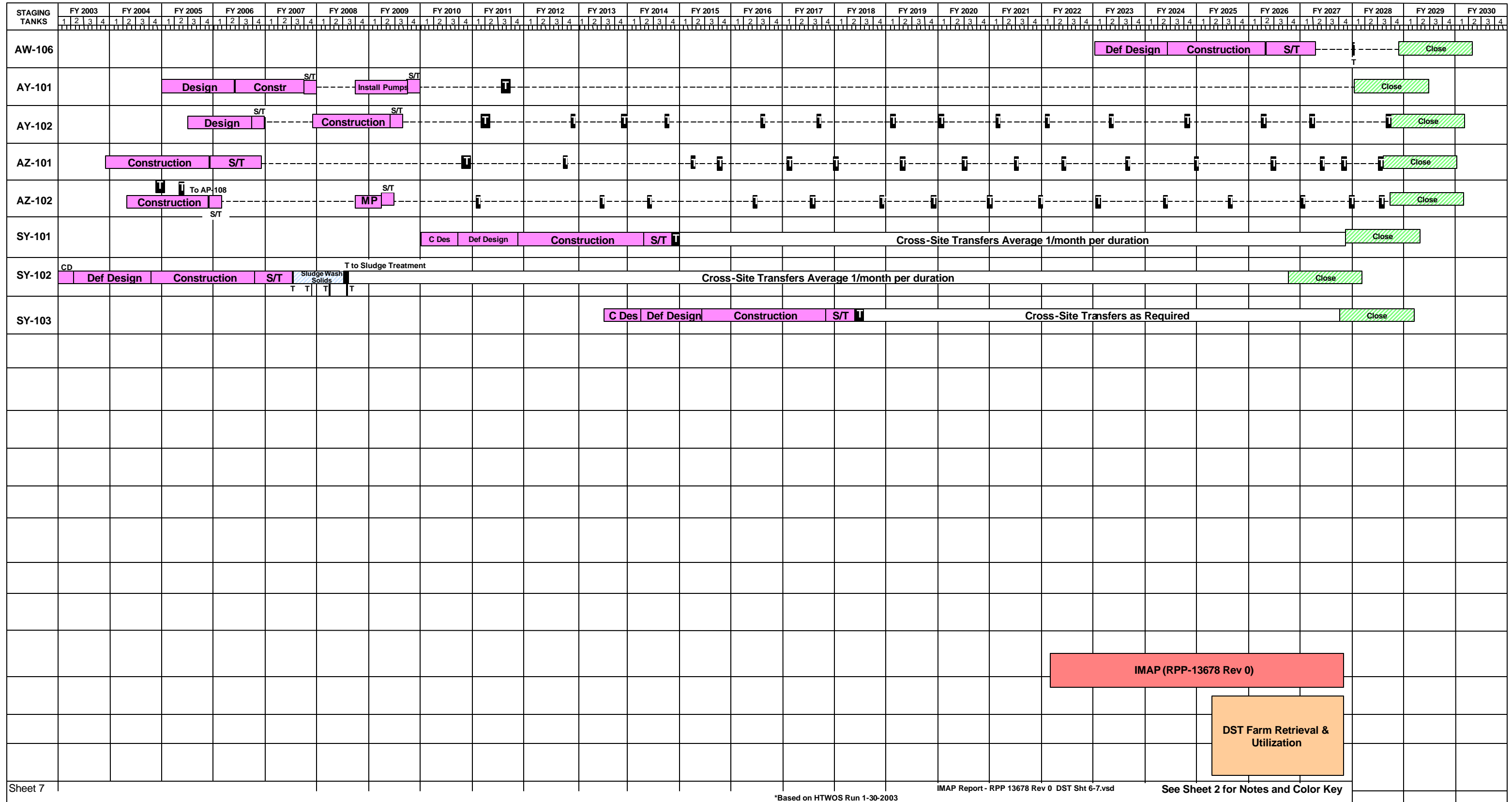
- Note:**
1. Transfer (t) windows account for 60 days before a "No Later Than" date.
 2. DST space availability constraints shown as red-dotted lines.

COLOR KEY

- ▽ Key Dates
- Delivery of Feed Batch to WTP Feed Tank; t= Feed Delivery Transfer
- Project Activities; MP=Mixer Pump Installation, S or S/T=Startup/Turnover
- WTP Permit and Safety Authorization Basis Compliance Verification Sampling Activities; C.V.
- Processing Activities; Vitrification = Vitrify, Vit, or V
- Closure
- Staging Activities; M=Mix or Mobilize, T=Transfer, D/M=Dissolve/Mix, D/T=Degas/Transfer, M/T=Mix to Sample
- SST Retrieval Activities
- T.F. Operations
- ILAW and IHLW Storage Facility Operations

**HLW Processing
Initial Tanks**





SOURCE TANKS	STAGING TANK	FY 2003				FY 2004				FY 2005				FY 2006				FY 2007				FY 2008				FY 2009				FY 2010				FY 2011				FY 2012				FY 2013				FY 2014				FY 2015				FY 2016				FY 2017				FY 2018				FY 2019				FY 2020				FY 2021				FY 2022				FY 2023				FY 2024				FY 2025				FY 2026			
		1	2	3	4	1	2	3	4	1	2	3	4	1	2	3	4	1	2	3	4	1	2	3	4	1	2	3	4	1	2	3	4	1	2	3	4	1	2	3	4	1	2	3	4	1	2	3	4	1	2	3	4	1	2	3	4	1	2	3	4	1	2	3	4	1	2	3	4	1	2	3	4	1	2	3	4	1	2	3	4	1	2	3	4	1	2	3	4	1	2	3	4	1	2	3	4
A-Farm																																																																																																	
A-101	AY-101																																																																																																
A-102	AY-101																																																																																																
A-103	AY-101																																																																																																
A-104	AY-101																																																																																																
A-105	AY-101																																																																																																
A-106	AY-101																																																																																																
AX-Farm																																																																																																	
AX-103	AY-101																																																																																																
AX-102	AY-101																																																																																																
AX-104	AY-101																																																																																																
AX-101	AY-101																																																																																																

IMAP (RPP-13678 Rev 0)

SST Retrieval

Note: Cross-Site (T) are required to support SST Retrievals - S, SX, TY, and U Tank Farms

SOURCE TANKS	STAGING TANK	FY 2003		FY 2004		FY 2005		FY 2006		FY 2007		FY 2008		FY 2009		FY 2010		FY 2011		FY 2012		FY 2013		FY 2014		FY 2015		FY 2016		FY 2017		FY 2018		FY 2019		FY 2020		FY 2021		FY 2022		FY 2023		FY 2024		FY 2025		FY 2026																											
		1	2	3	4	1	2	3	4	1	2	3	4	1	2	3	4	1	2	3	4	1	2	3	4	1	2	3	4	1	2	3	4	1	2	3	4	1	2	3	4	1	2	3	4	1	2	3	4	1	2	3	4	1	2	3	4	1	2	3	4	1	2	3	4	1	2	3	4	1	2	3	4	1	2
B-201	Sup Sludge Treat	D Con		S/T Close																																										IMAP (RPP-13678 Rev 0)																													
B-202	Sup Sludge Treat	D Con		S/T Close																																																																							
B-203	Sup Sludge Treat	D Con		S/T Close																																																																							
B-204	Sup Sludge Treat	D Con		S/T Close																																																																							
B-101	B-WRF																																									D Con		S/T Close																															
B-102	B-WRF																																									D Con		S/T Close																															
B-103	B-WRF																																									D Con		S/T Close																															
B-104	B-WRF																																									D Con		S/T Close																															
B-105	B-WRF																																									D Con		Ret Close																															
B-106	B-WRF																																									D Con		S/T Close																															
B-107	B-WRF																																									D Con		S/T Close																															
B-108	B-WRF																																									D Con		S/T Close																															
B-109	B-WRF																																									D Con		S/T Close																															
B-110	B-WRF																																									D Con		Retrieve Close																															
B-111	B-WRF																																									D Con		Retrieve Close																															
B-112	B-WRF																																									D Con		S/T Close																															
																																										SST Retrieval																																	

SOURCE TANKS	STAGING TANK	FY 2003				FY 2004				FY 2005				FY 2006				FY 2007				FY 2008				FY 2009				FY 2010				FY 2011				FY 2012				FY 2013				FY 2014				FY 2015				FY 2016				FY 2017				FY 2018				FY 2019				FY 2020				FY 2021				FY 2022				FY 2023				FY 2024				FY 2025				FY 2026																	
		1	2	3	4	1	2	3	4	1	2	3	4	1	2	3	4	1	2	3	4	1	2	3	4	1	2	3	4	1	2	3	4	1	2	3	4	1	2	3	4	1	2	3	4	1	2	3	4	1	2	3	4	1	2	3	4	1	2	3	4	1	2	3	4	1	2	3	4	1	2	3	4	1	2	3	4	1	2	3	4	1	2	3	4	1	2	3	4	1	2	3	4	1	2	3	4	1	2	3	4	1	2	3	4	1	2	3	4	1	2
C-104	AY-101	D	Const			S/T	Ret			Closure																																		IMAP (RPP-13678 Rev 0)																																																																			
C-107	AY-102																															Update PDC				S/T	D	Con			Ret																			Closure																																																			
C-106	AN-106	Field Prep (Mod Sluicing)																R		Closure																																																																																											
C-201	AY-102	D		Con			S/T	Close																																																																																																							
C-202	AY-102	D		Con			S/T	Close																																																																																																							
C-203	AY-102	D		Con			S/T	Close																																																																																																							
C-204	AY-102	D		Con			S/T	Close																																																																																																							
C-101	AY-101																															D		Con			S/T	Close																																																																									
C-102	AY-101																															D		Con			Retrieve										Close																																																																
C-103	AY-101																															D		Con			R	Close																																																																									
C-105	AY-101																															D		Con			Retrieve										Closure																																																																
C-108	AY-101																															D		Con			S/T	Close																																																																									
C-109	AY-101																															D		Con			S/T	Close																																																																									
C-110	AY-101																															D		Con			R	Close																																																																									
C-111	AY-101																															D		Con			S/T	Close																																																																									
C-112	AY-101																															D		Con			S/T	Close																																																																									
																						SST Retrieval																																																																																									

SOURCE TANKS	STAGING TANK	FY 2003				FY 2004				FY 2005				FY 2006				FY 2007				FY 2008				FY 2009				FY 2010				FY 2011				FY 2012				FY 2013				FY 2014				FY 2015				FY 2016				FY 2017				FY 2018				FY 2019				FY 2020				FY 2021				FY 2022				FY 2023				FY 2024				FY 2025				FY 2026			
		1	2	3	4	1	2	3	4	1	2	3	4	1	2	3	4	1	2	3	4	1	2	3	4	1	2	3	4	1	2	3	4	1	2	3	4	1	2	3	4	1	2	3	4	1	2	3	4	1	2	3	4	1	2	3	4	1	2	3	4	1	2	3	4	1	2	3	4	1	2	3	4	1	2	3	4																				
T-201	Sup Sludge Treat	D Const		S/T		Close																										IMAP (RPP-13678 Rev 0)																																																																	
T-202	Sup Sludge Treat	D Const		S/T		Close																										SST Retrieval																																																																	
T-203	Sup Sludge Treat	D Const		S/T		Close																																																																																											
T-204	Sup Sludge Treat	D Const		S/T		Close																																																																																											
T-110	Sup Sludge Treat	D Const		S/T		Close																																																																																											
T-111	Sup Sludge Treat	D Const		S/T		Close																																																																																											
T-101	T-Farm WRF	D Const		S/T		Retrieve		Close																																																																																									
T-102	T-Farm WRF	D Con		S/T		Close																																																																																											
T-103	T-Farm WRF	D Const		S/T		Close																																																																																											
T-104	T-Farm WRF	D Con		S/T		Retrieve						Close																																																																																					
T-105	T-Farm WRF	D Con		S/T		Ret		Close																																																																																									
T-106	T-Farm WRF	D Const		S/T		Ret		Close																																																																																									
T-107	T-Farm WRF	D Con		S/T		R		Close																																																																																									
T-108	T-Farm WRF	D Const		S/T		Close																																																																																											
T-109	T-Farm WRF	D Const		S/T		Close																																																																																											
T-112	T-Farm WRF	D Con		S/T		Close																																																																																											

SOURCE TANKS	STAGING TANK	FY 2003				FY 2004				FY 2005				FY 2006				FY 2007				FY 2008				FY 2009				FY 2010				FY 2011				FY 2012				FY 2013				FY 2014				FY 2015				FY 2016				FY 2017				FY 2018				FY 2019				FY 2020				FY 2021				FY 2022				FY 2023				FY 2024				FY 2025				FY 2026			
		1	2	3	4	1	2	3	4	1	2	3	4	1	2	3	4	1	2	3	4	1	2	3	4	1	2	3	4	1	2	3	4	1	2	3	4	1	2	3	4	1	2	3	4	1	2	3	4	1	2	3	4	1	2	3	4	1	2	3	4	1	2	3	4	1	2	3	4	1	2	3	4	1	2	3	4	1	2	3	4	1	2	3	4												
T-Farm Complex WRF & Upgrades		<p>Con Des Def Design Construction S/T WRF Completion Tied to Retrieval of TX-101</p>																																																																																															
TX-101	T-Farm WRF	<p>S/T D Con Closure R</p> <p>IMAP (RPP-13678 Rev 0)</p>																																																																																															
TX-102	T-Farm WRF	<p>S/T D Con R Closure</p>																																																																																															
TX-103	T-Farm WRF	<p>S/T D Con R Closure</p>																																																																																															
TX-104	T-Farm WRF	<p>S/T D Con Closure R</p>																																																																																															
TX-105	T-Farm WRF	<p>S/T D Const Retrieve Close</p>																																																																																															
TX-106	T-Farm WRF	<p>S/T D Con Ret Close</p>																																																																																															
TX-107	T-Farm WRF	<p>S/T D Const Close R</p>																																																																																															
TX-108	T-Farm WRF	<p>S/T D Con R Closure</p>																																																																																															
TX-109	T-Farm WRF	<p>S/T D Con Ret Closure</p>																																																																																															
TX-110	T-Farm WRF	<p>S/T D Con Retrieve Close</p>																																																																																															
TX-111	T-Farm WRF	<p>S/T D Con Retrieve Closure</p>																																																																																															
TX-112	T-Farm WRF	<p>S/T D Con Retrieve Closure</p>																																																																																															
TX-113	T-Farm WRF	<p>S/T D Const Retrieve Close</p>																																																																																															
TX-114	T-Farm WRF	<p>S/T D Const Retrieve Close</p>																																																																																															
TX-115	T-Farm WRF	<p>S/T D Const Retrieve Close</p>																																																																																															
TX-116	T-Farm WRF	<p>S/T D Const Retrieve Close</p>																																																																																															
TX-117	T-Farm WRF	<p>S/T D Con Retrieve Close</p>																																																																																															
TX-118	T-Farm WRF	<p>S/T D Con Retrieve Close</p> <p>SST Retrieval</p>																																																																																															

SOURCE TANKS	STAGING TANK	FY 2003				FY 2004				FY 2005				FY 2006				FY 2007				FY 2008				FY 2009				FY 2010				FY 2011				FY 2012				FY 2013				FY 2014				FY 2015				FY 2016				FY 2017				FY 2018				FY 2019				FY 2020				FY 2021				FY 2022				FY 2023				FY 2024				FY 2025				FY 2026			
		1	2	3	4	1	2	3	4	1	2	3	4	1	2	3	4	1	2	3	4	1	2	3	4	1	2	3	4	1	2	3	4	1	2	3	4	1	2	3	4	1	2	3	4	1	2	3	4	1	2	3	4	1	2	3	4	1	2	3	4	1	2	3	4	1	2	3	4	1	2	3	4	1	2	3	4	1	2	3	4	1	2	3	4	1	2	3	4								
U-201	SY-102																																																																									IMAP (RPP-13678 Rev 0)																							
U-202	SY-102																																																																																																
U-203	SY-102																																																																																																
U-204	SY-102																																																																																																
U-Farm Complex WRF & Upgrades																																																																																																	
U-101	U-Farm WRF																																																																																																
U-102	U-Farm WRF																																																																																																
U-103	U-Farm WRF																																																																																																
U-104	U-Farm WRF																																																																																																
U-105	U-Farm WRF																																																																																																
U-106	U-Farm WRF																																																																																																
U-107	SY-102																																																																																																
U-108	U-Farm WRF																																																																																																
U-109	U-Farm WRF																																																																																																
U-110	U-Farm WRF																																																																																																
U-111	U-Farm WRF																																																																																																
U-112	U-Farm WRF																																																																																																
																																																														SST Retrieval																																			