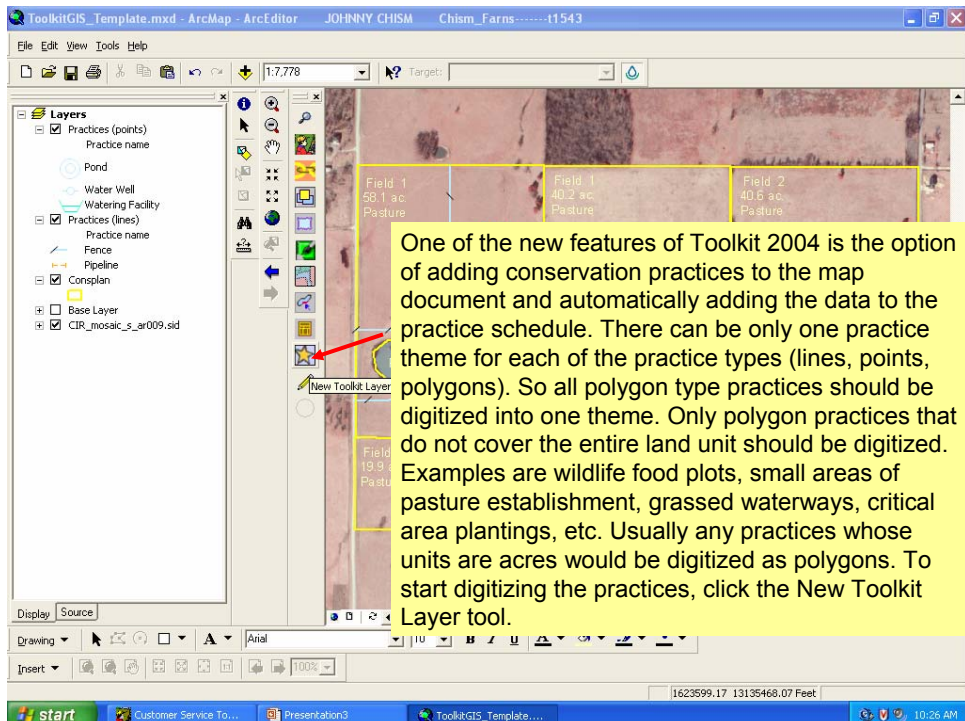
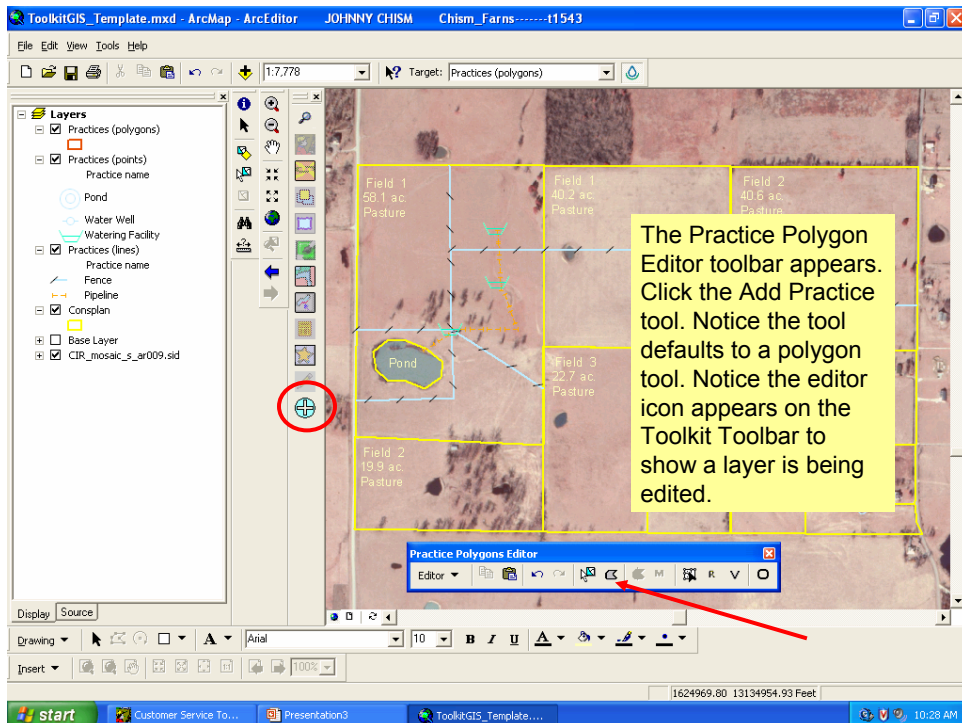
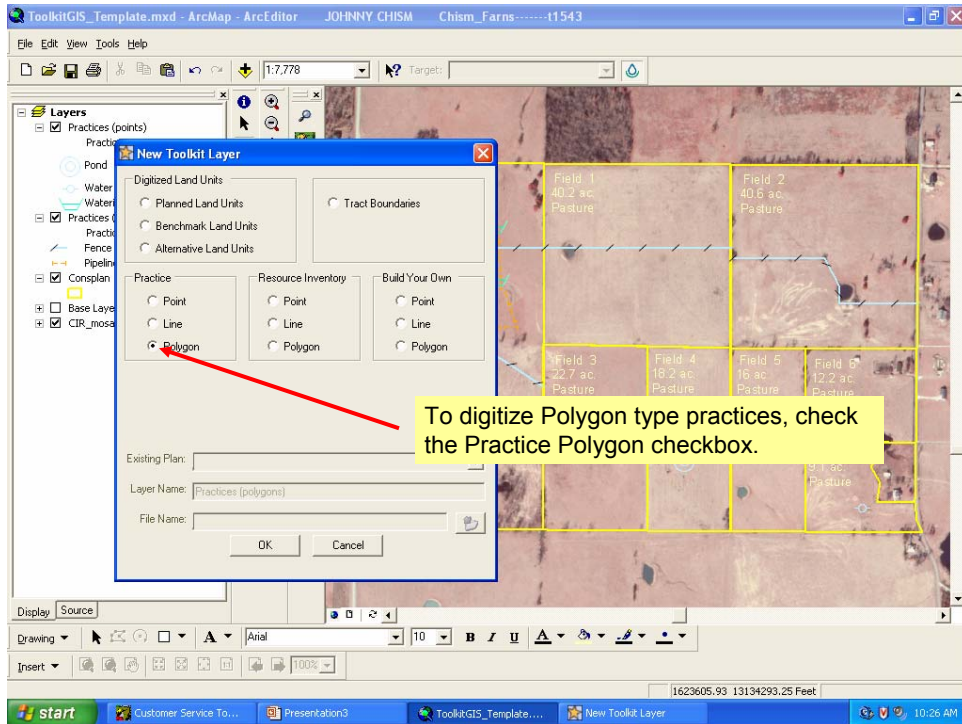
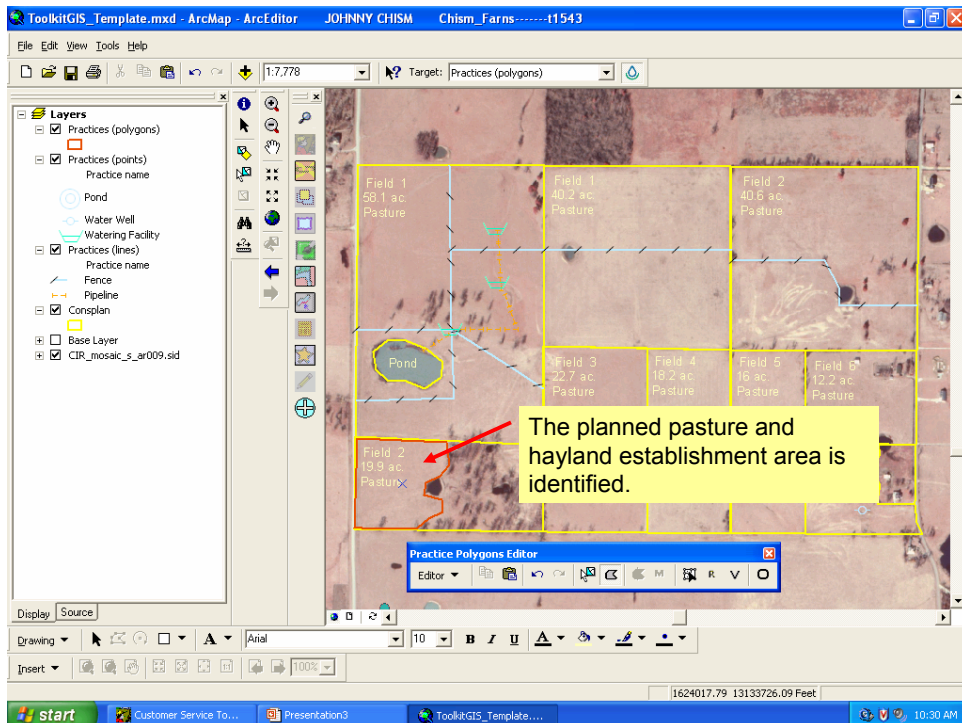
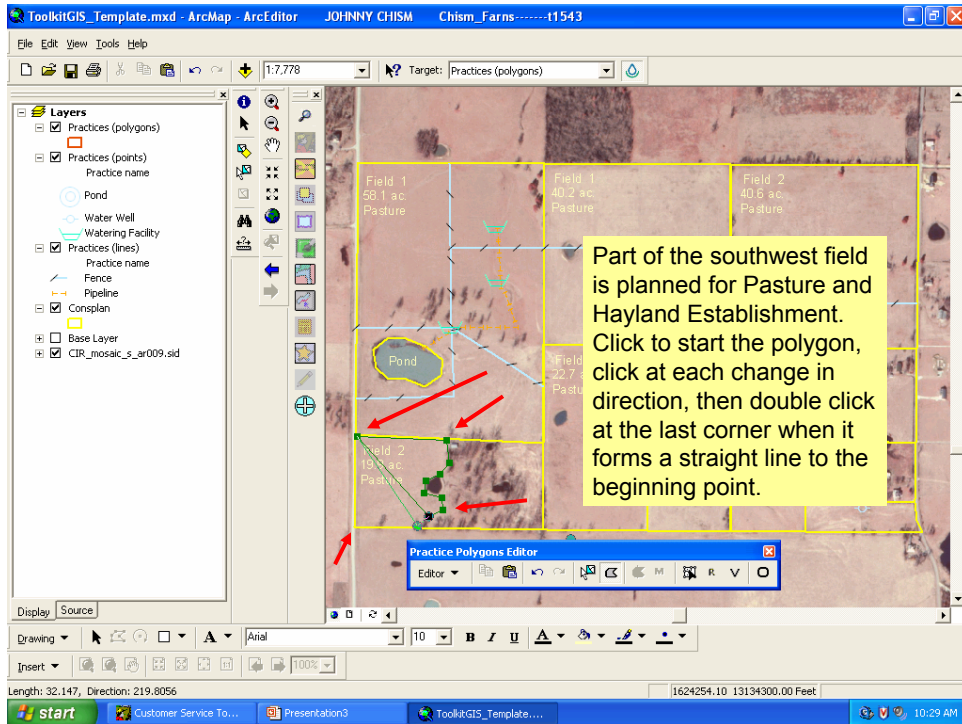


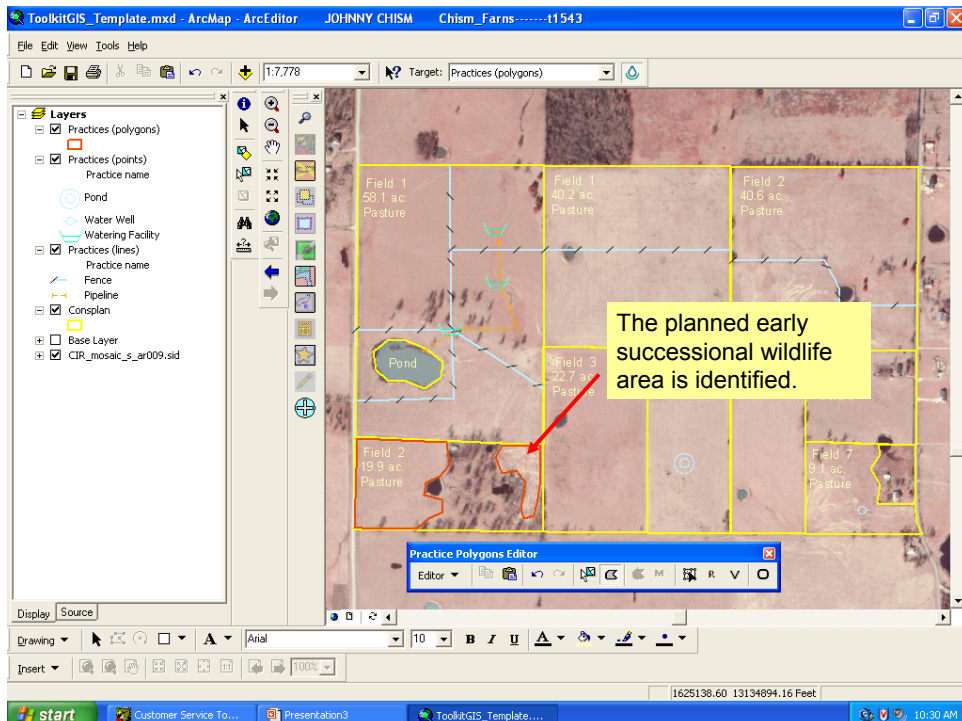
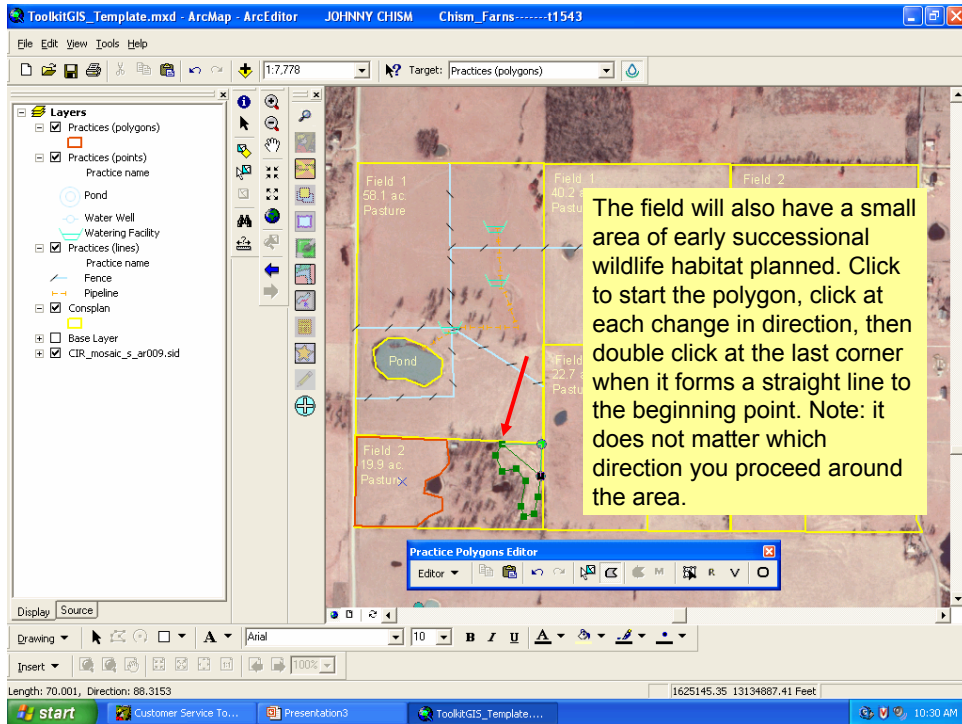
# Digitizing Polygon Type Conservation Practices

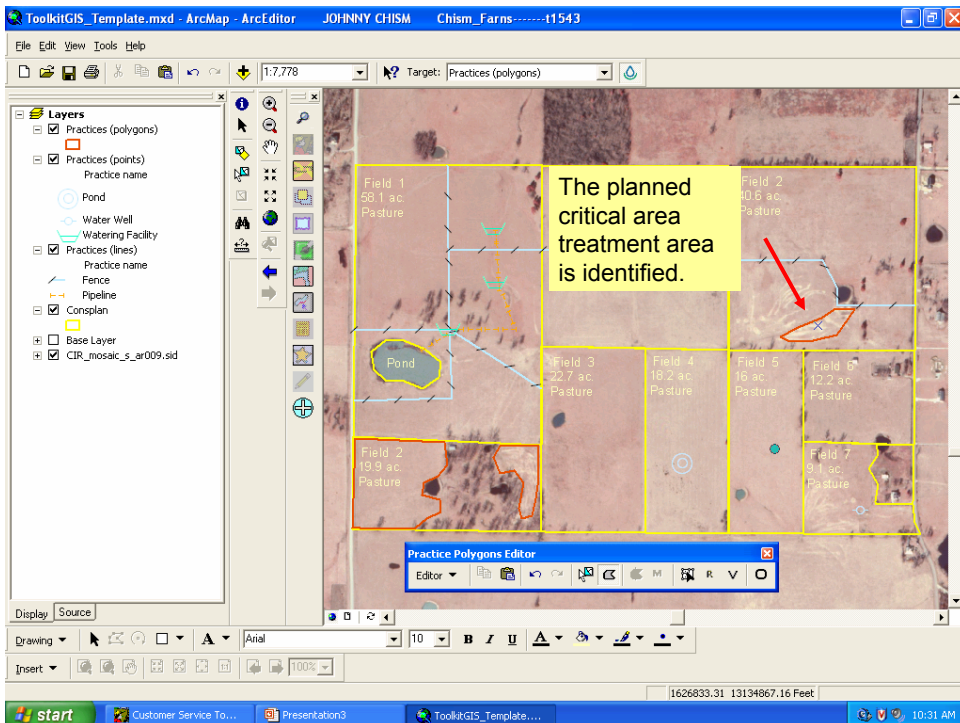
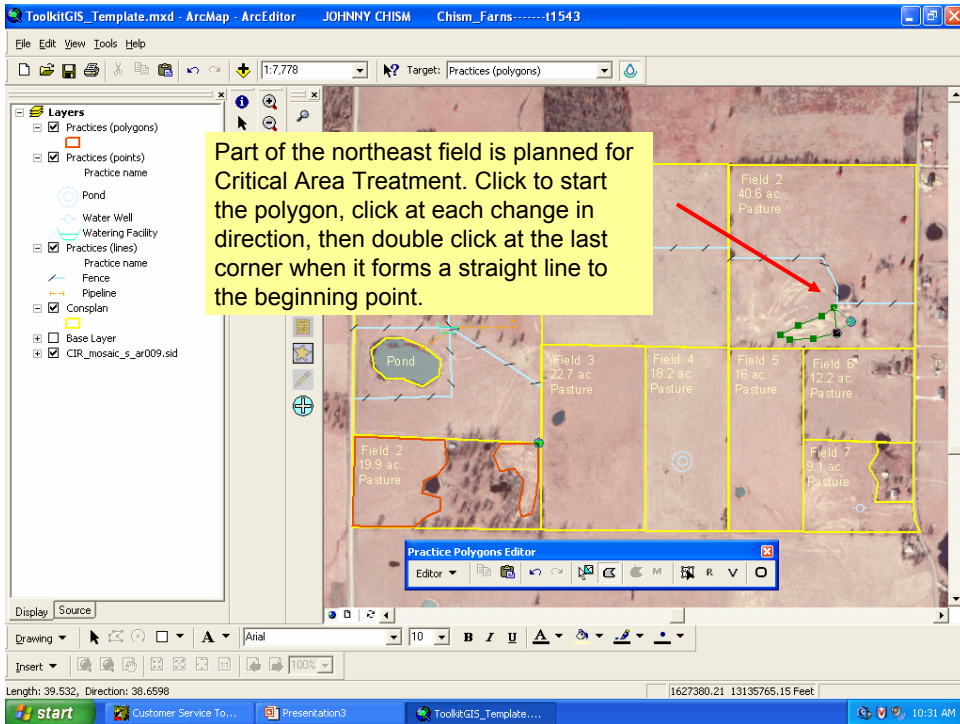
## Toolkit 2004

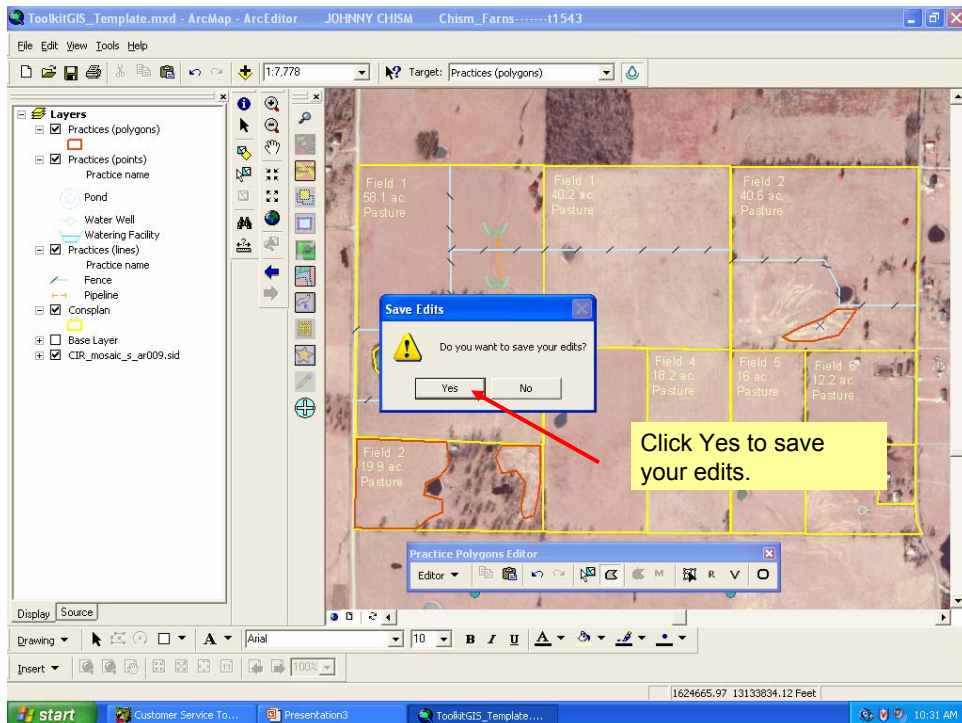
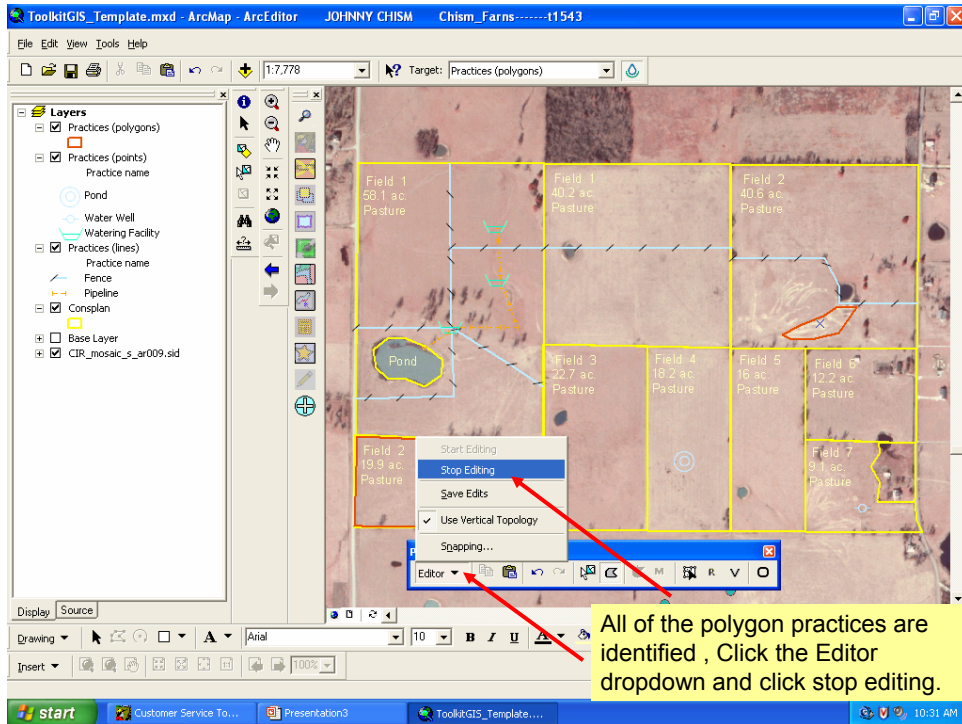


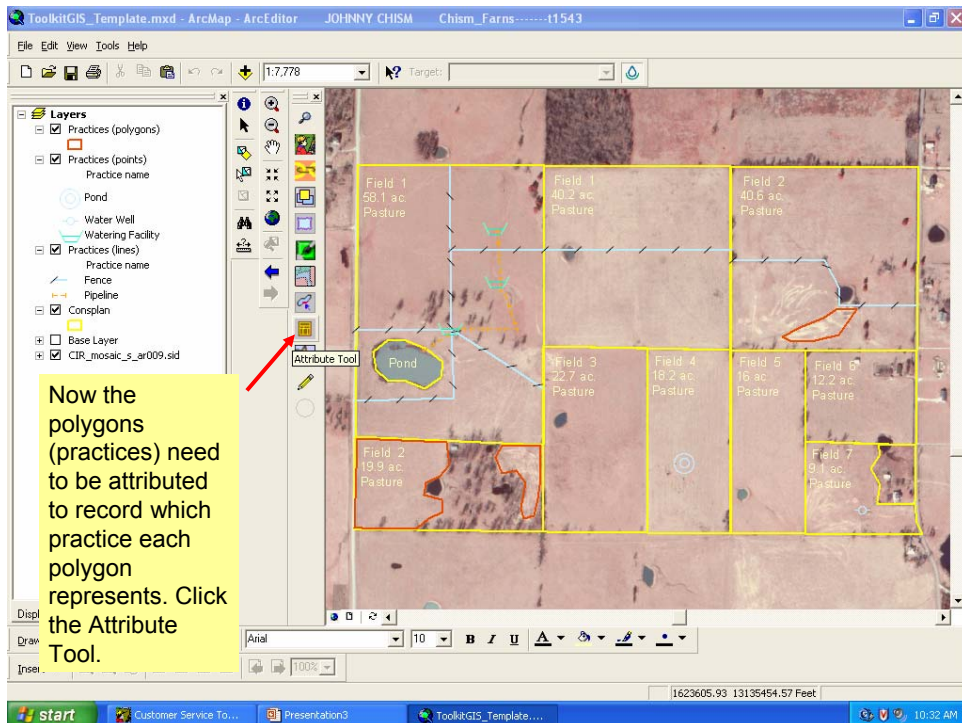
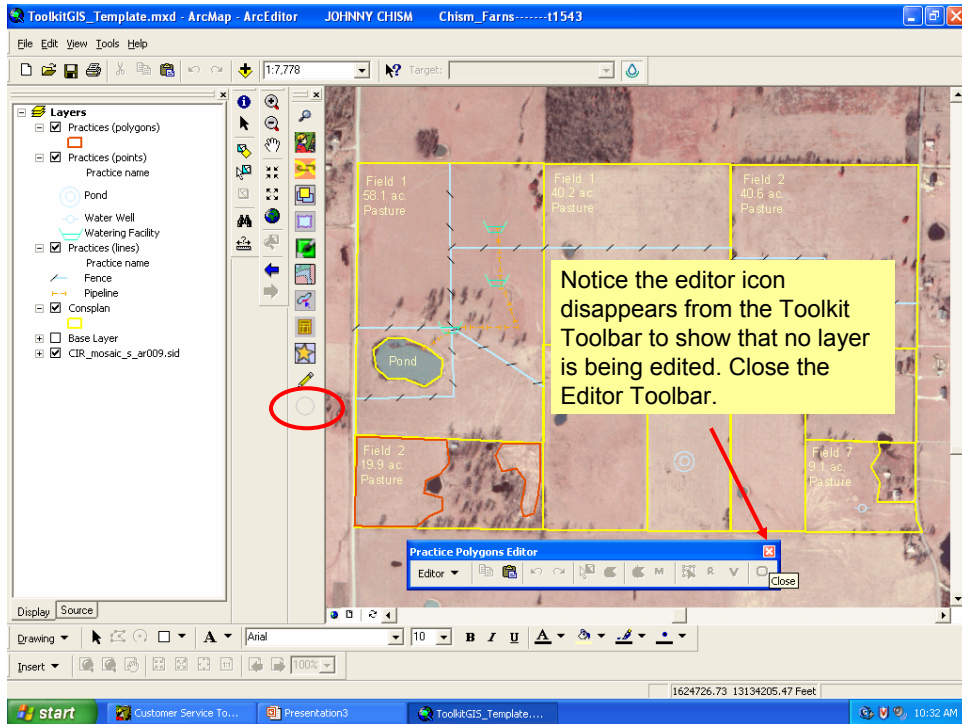


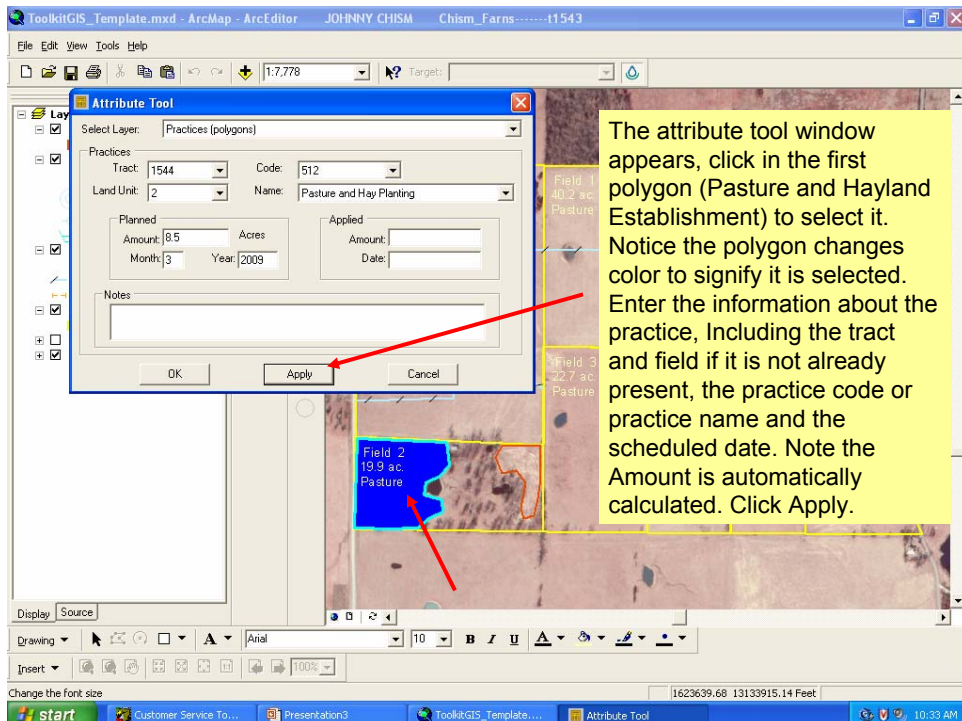
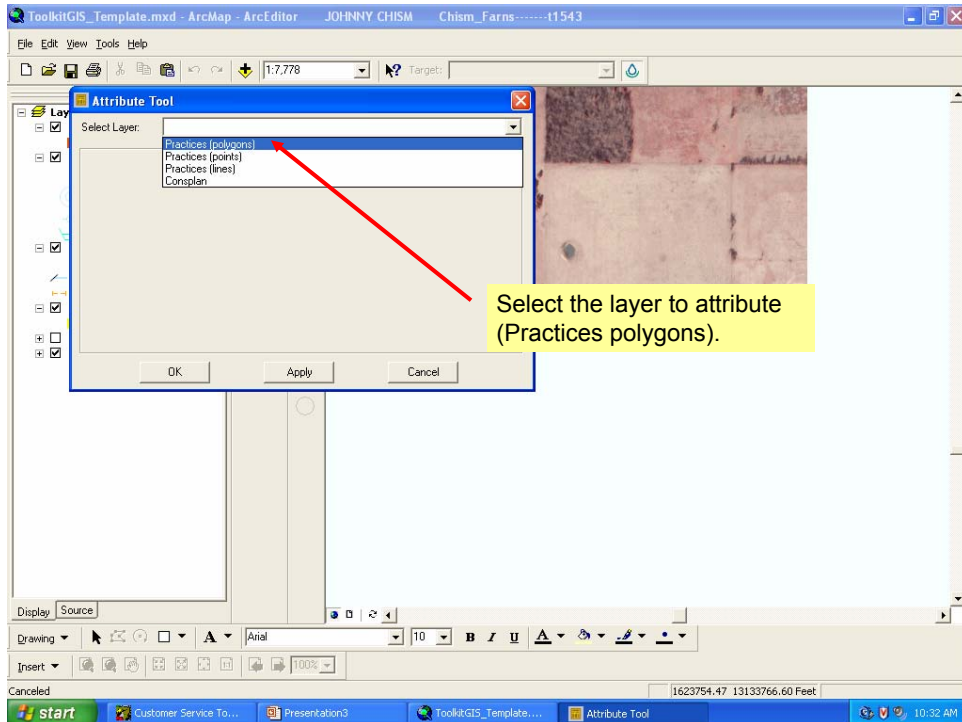




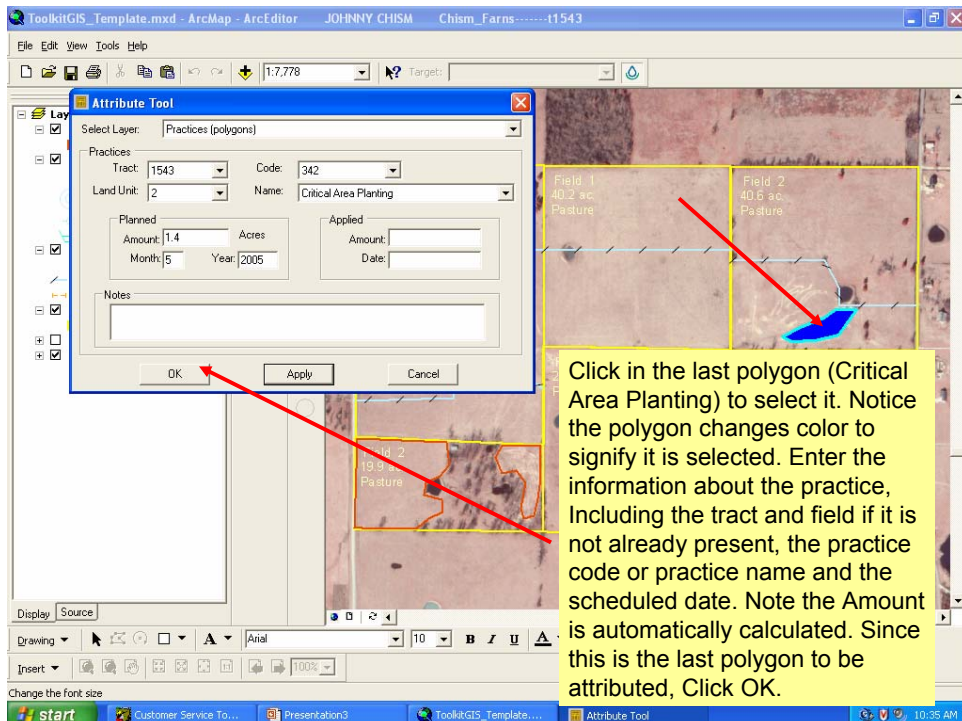
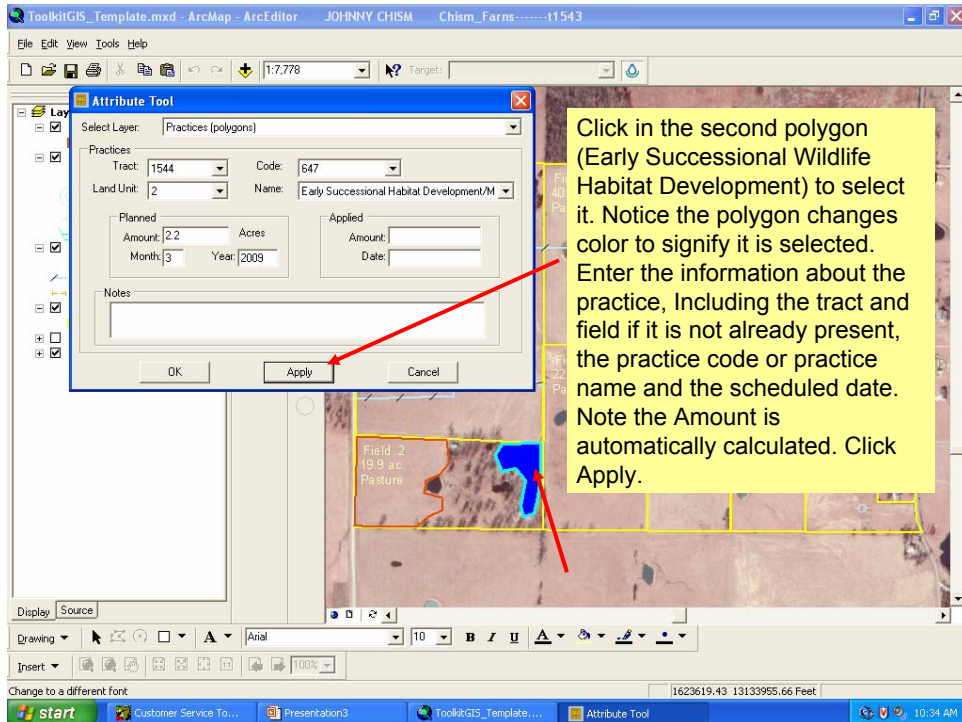


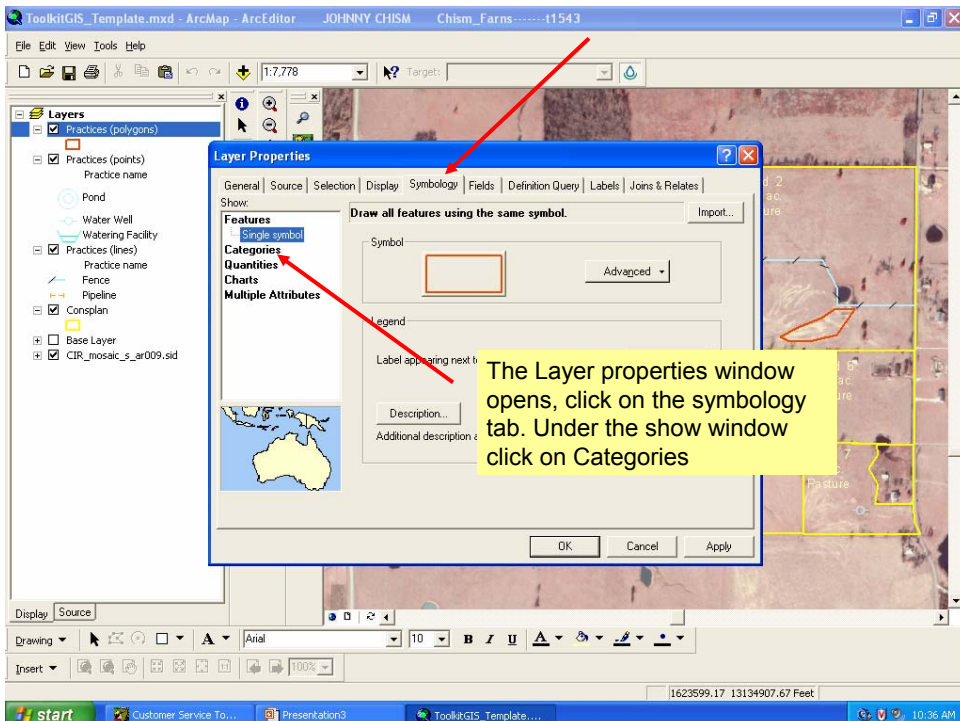
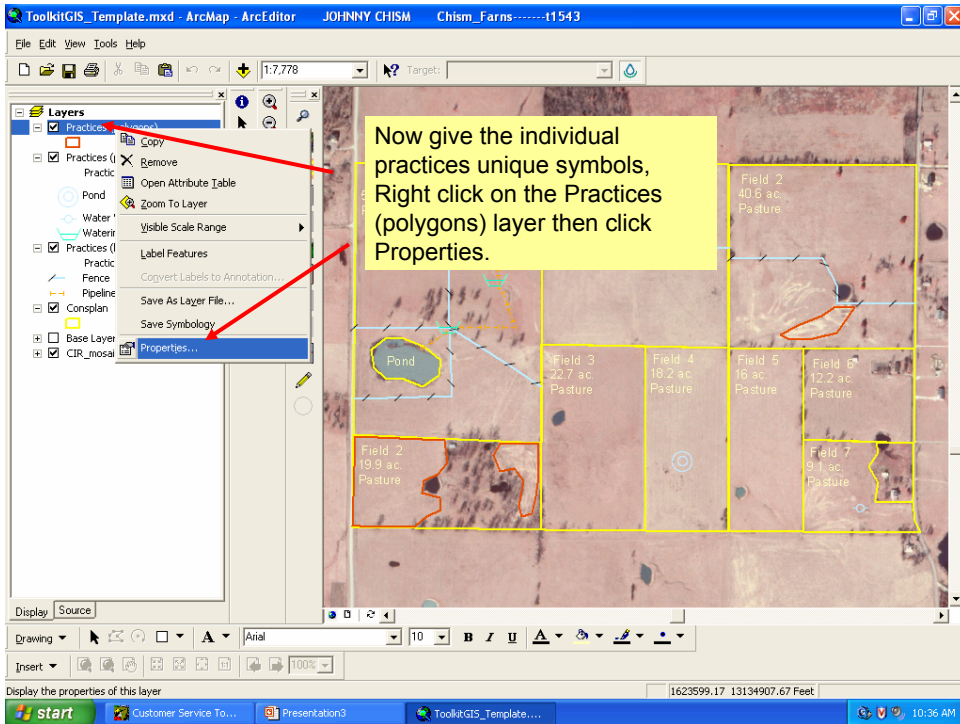


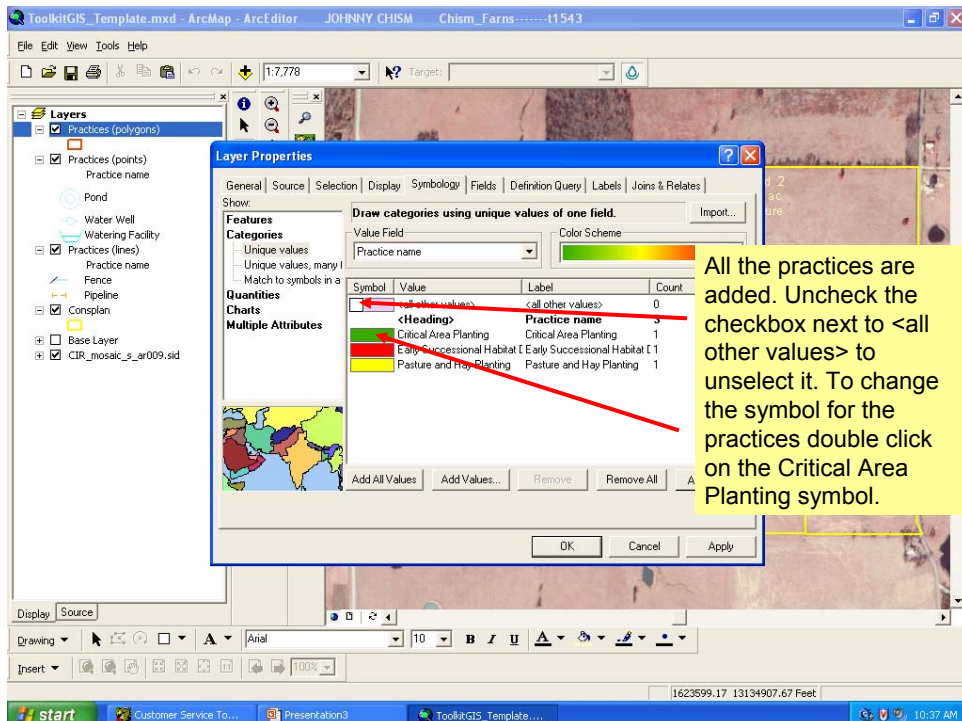
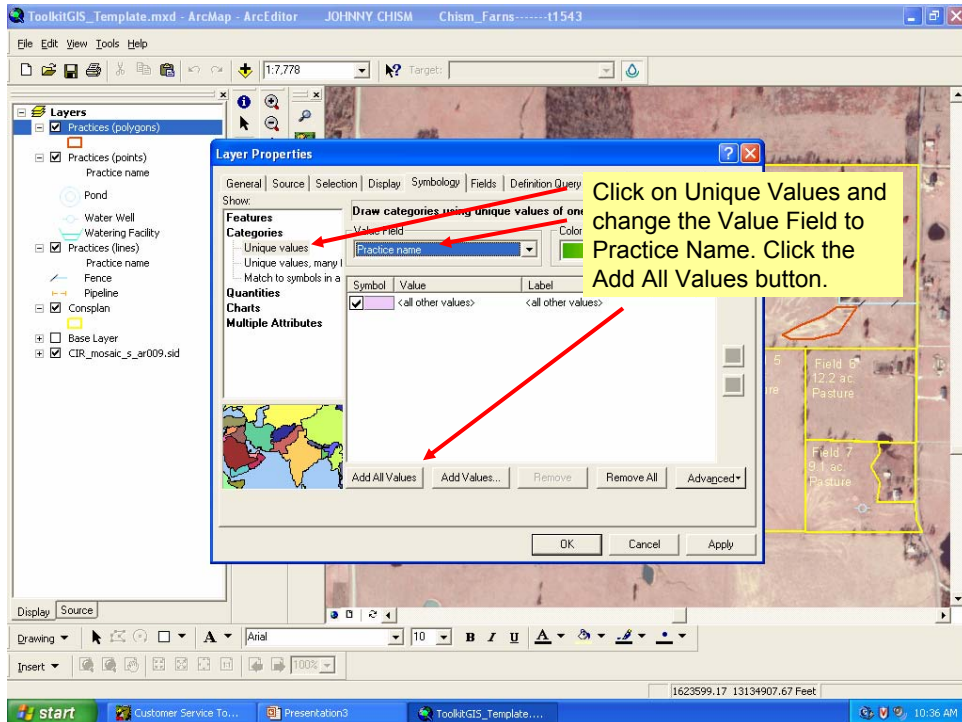


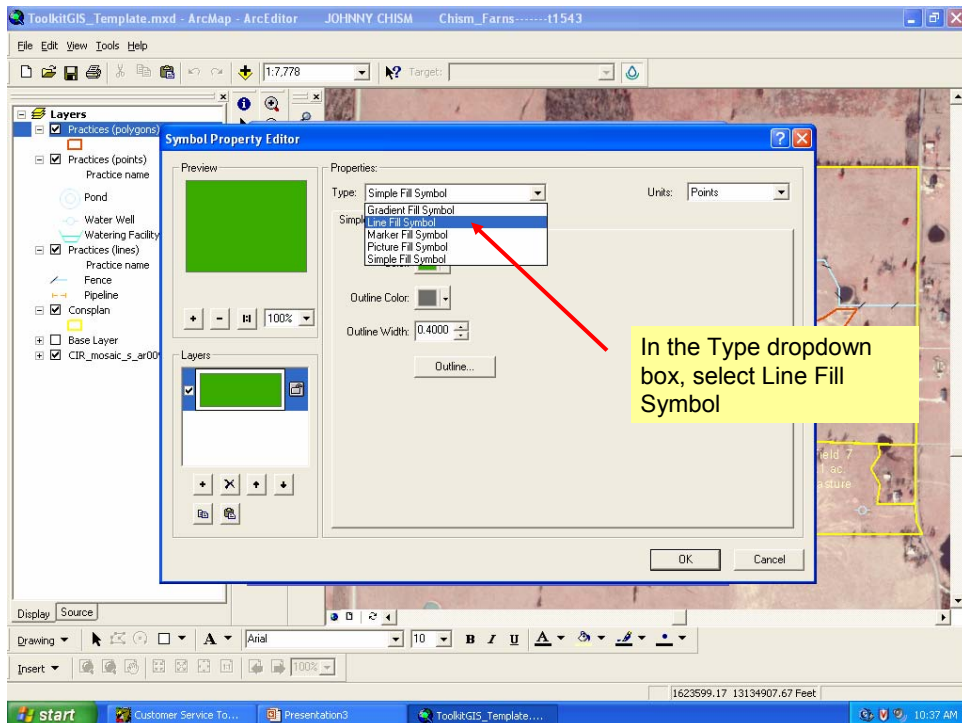
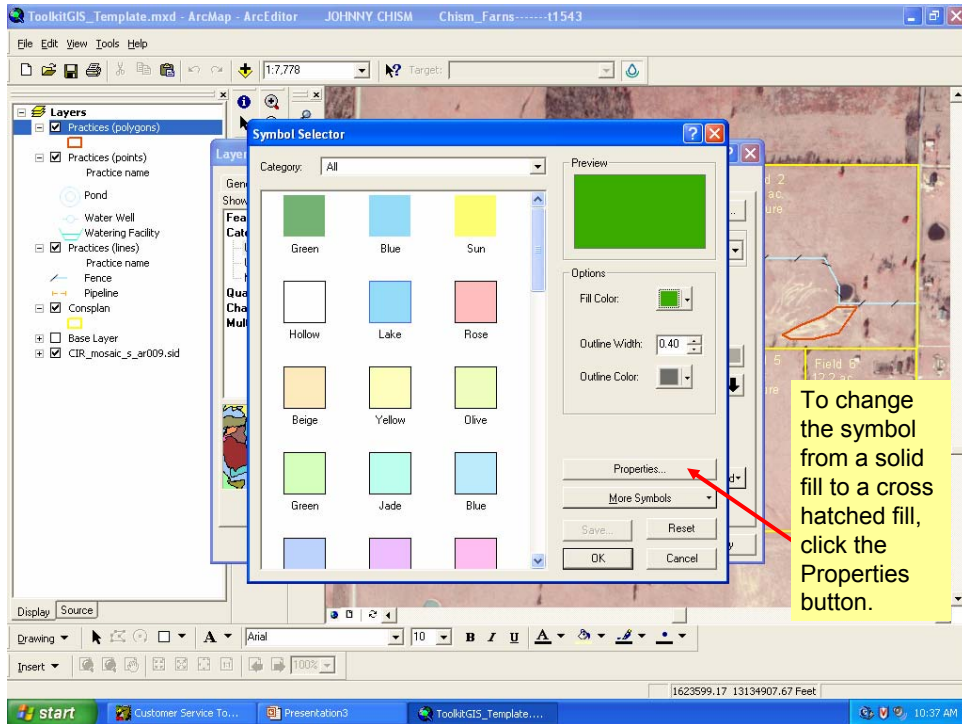


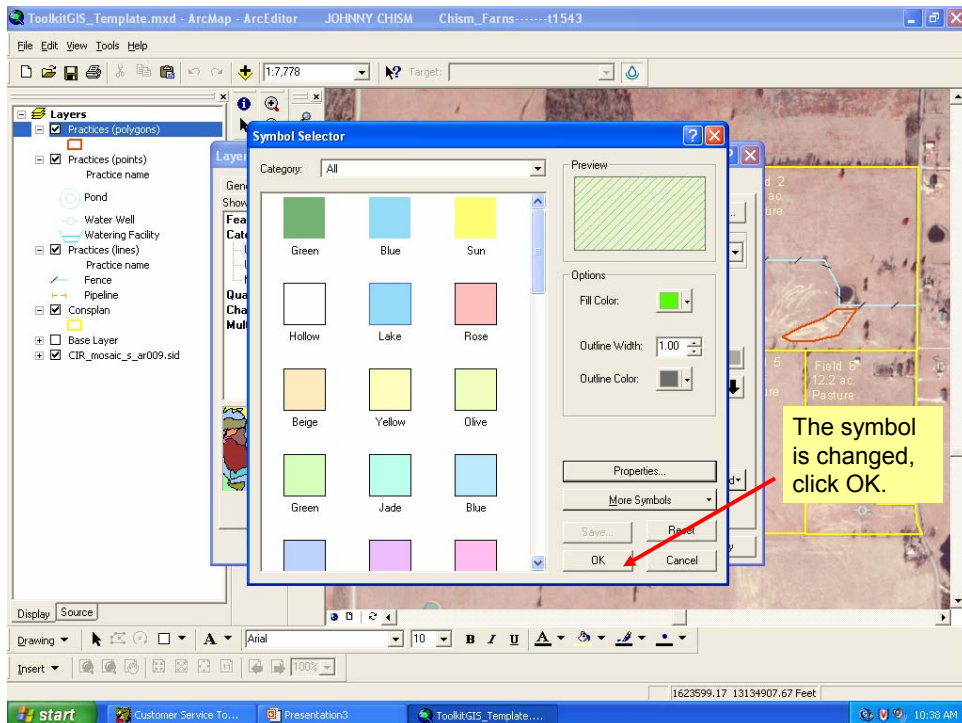
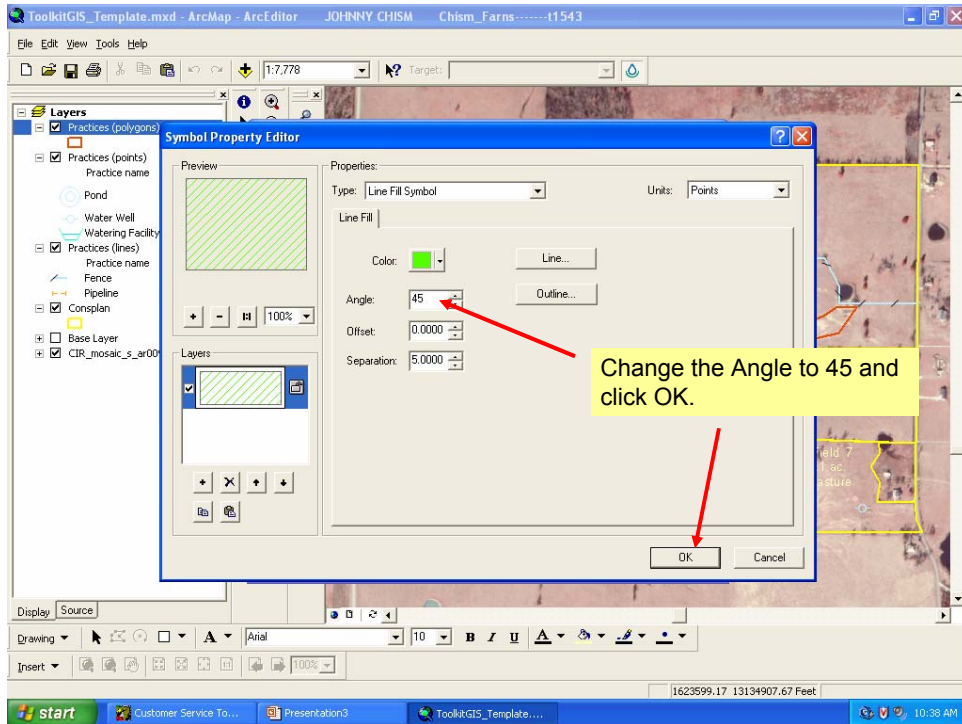


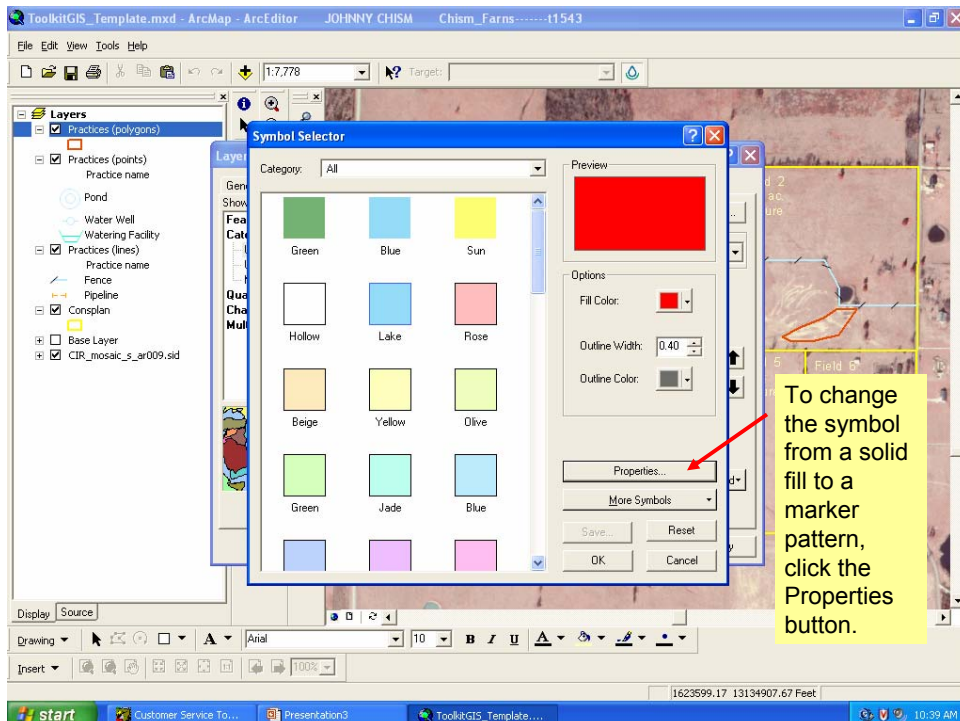
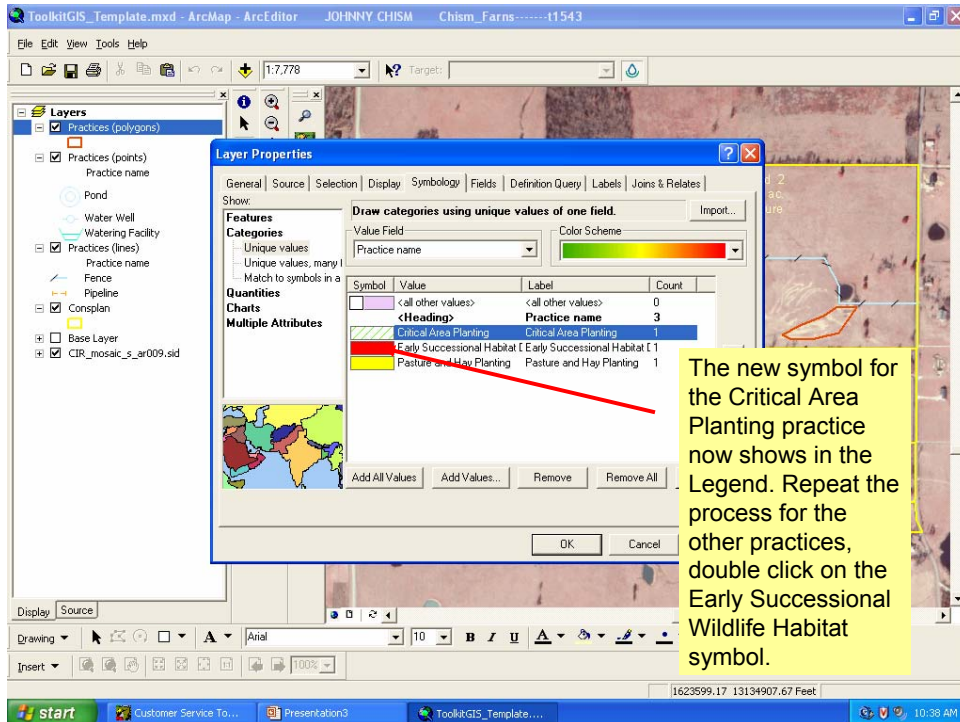




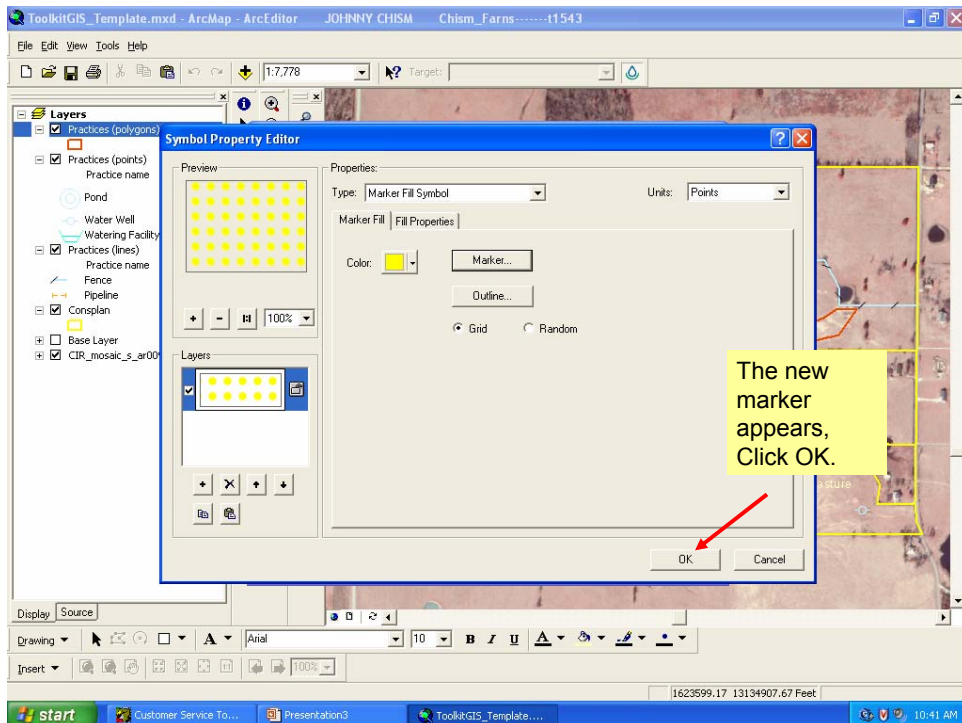
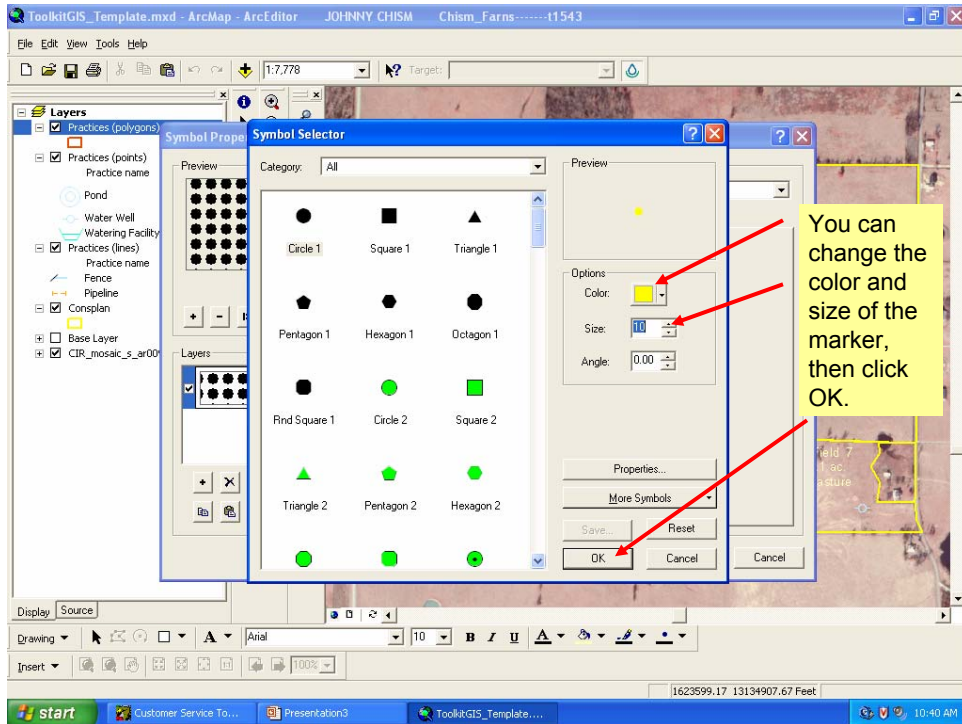




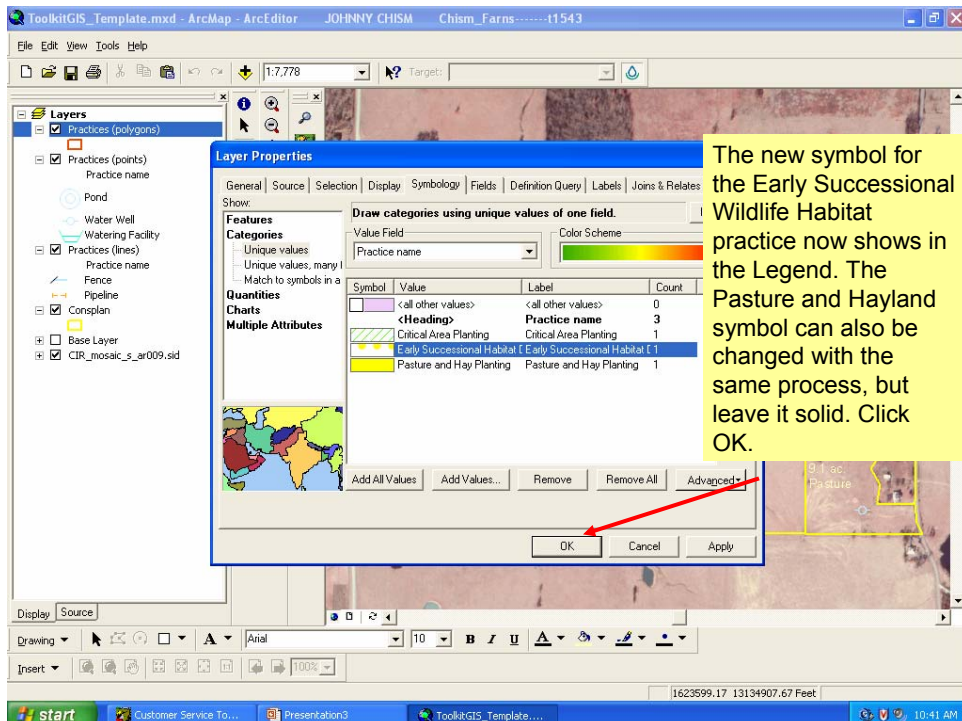
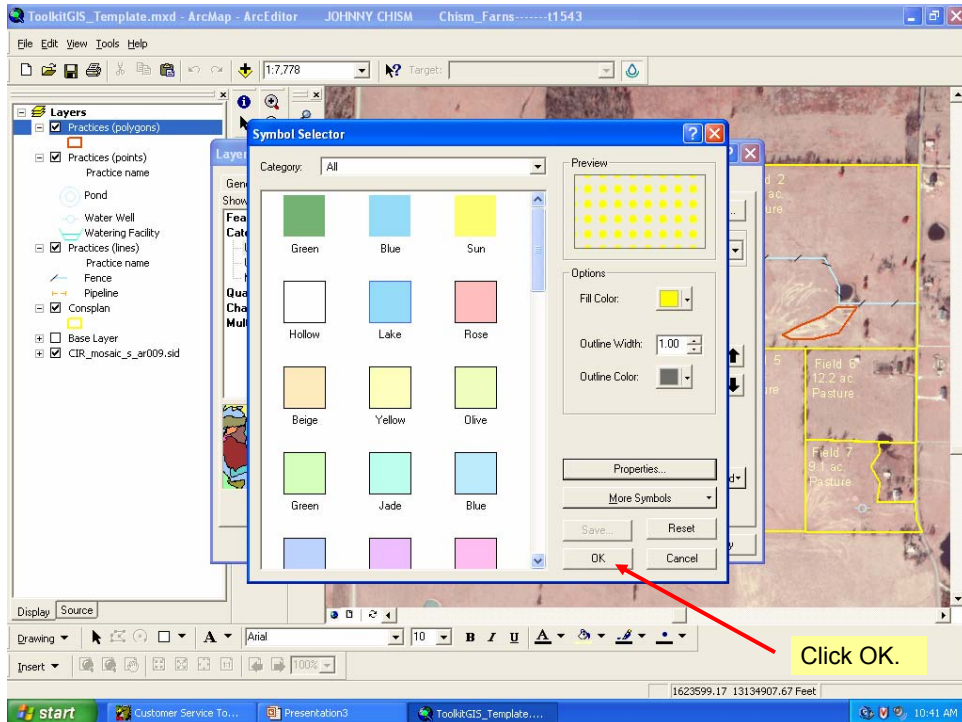


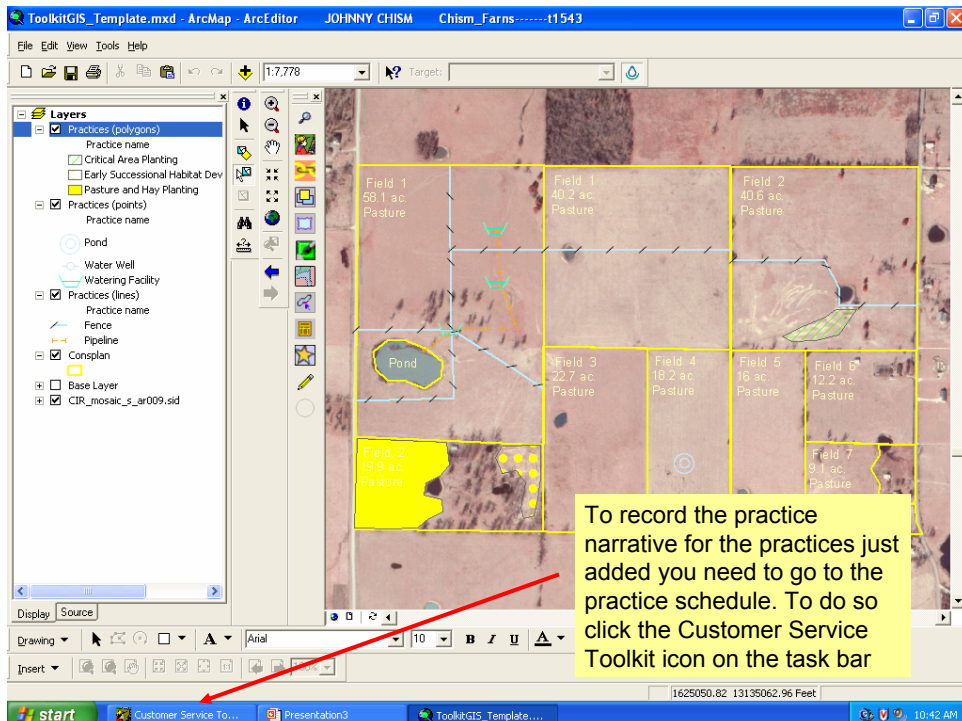
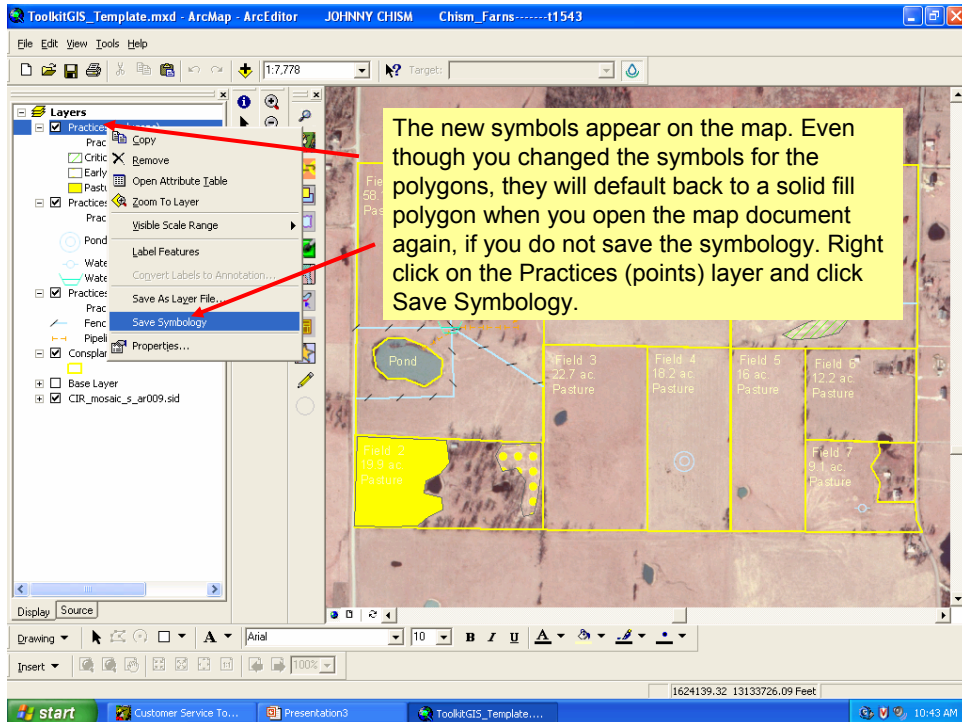












You are returned to Customer Service Toolkit, click the Practice Schedule tab if you are not already there. Select the plan by clicking the dropdown button in the Select a Plan window. The land units appear with the practices that were just digitized. Notice no narratives are entered for the practices just digitized, click on the Narrative line for the Critical Area Treatment practice.

Tract Number	Land Unit	Practice	Narrative	Planned Amo	Upl	Month	
1543	1	382	00N8	1345.3	it	03	
1543	2	342		1.4	ac	05	
1543	2	382	00N8	1560.8	it	03	
1543	4	378	001	1	no	10	2009
1543	7	642	00N	1	no	03	2010
1544	1	382	00N8	4540.7	it	03	2005
1544	1	516	1	1389.1	it	06	2008
1544	1	614	002	3	no	05	2008
1544	2	512		8.5	ac	03	2009
1544	2	647		2.2	ac	03	2009

The narrative window appears, choose a narrative and click OK.

Practice Name: Critical Area Planting

Code: 342

ID	Text
00N	Vegetation will be established on severely eroding areas or other areas requiring extra ordinary means to establish vegetation.

Modified Narrative: Vegetation will be established on severely eroding areas or other areas requiring extra ordinary means to establish vegetation.

Narrative text size is 127

Buttons: Check Spelling, OK, Cancel

Customer Service Toolkit JOHNNY CHISM \Chism\_Farms-----11543

Tools Reports Help

General Assistance Notes Land Units Practice Schedule Customer Files

**Land Units**  
Plan: Conspan  
Tract 1543  
Tract 1544

**Conservation System**  
Guide: No Guide Available  
System: No System Available  
CSG unavailable: multiple land uses selected

**All Practices**

Code	Practice Name
590	Nutrient Management
595	Pest Management
614	Watering Facility
633	Waste Utilization
642	Water Well
645	Upland Wildlife Habitat Manager
647	Early Successional Habitat Develop

**Schedule** Plan Date: Dec 2004

Tract Number	Land Unit	Practice	Narrative	Planned Amo	Units	Month	Year	Applied Amou	Applied Date	Program	Source
1543	1	382	00N8	1345.3	it	03	2007				Toolkit v5.0
1543	2	342	00N	1.4	ac	05	2005				Toolkit v5.0
1543	2	382	00N8	1560.8	it	03	2006				Toolkit v5.0
1543	4	378	001	1	no	10	2009				Toolkit v5.0
1543	7	642	00N	1	no	03	2010				Toolkit v5.0
1544	1	382	00N8	4540.7	it	03	2005				Toolkit v5.0
1544	1	516	1	1389.1	it	06	2008				Toolkit v5.0
1544	1	614	002	3	no	05	2008				Toolkit v5.0
1544	2	512	00M2	8.5	ac	03	2009				Toolkit v5.0
1544	2	647	esm1	2.2	ac	03	2009				Toolkit v5.0

Add Row Copy to Cell Below Save Plan Wizard... Contract Wizard...

Johnny Chism AUTHENTICATED

Customer Service Toolkit JOHNNY CHISM \Chism\_Farms-----11543

Tools Reports Help

General Assistance Notes Land Units Practice Schedule Customer Files

**Land Units**  
Plan: Conspan  
Tract 1543  
Tract 1544

**Conservation System**  
Guide: No Guide Available  
System: No System Available  
CSG unavailable: multiple land uses selected

**All Practices**

Code	Practice Name
590	Nutrient Management
595	Pest Management
614	Watering Facility
633	Waste Utilization
642	Water Well
645	Upland Wildlife Habitat Manager
647	Early Successional Habitat Develop

**Schedule** Plan Date: Dec

Tract Number	Land Unit	Practice	Narrative	Planned Amo	Units	Month	Year	Applied Amou	Applied Date	Program	Source
1543	1	382	00N8	1345.3	it	03	2007				Toolkit v5.0
1543	2	342	00N	1.4	ac	05	2005				Toolkit v5.0
1543	2	382	00N8	1560.8	it	03	2006				Toolkit v5.0
1543	4	378	001	1	no	10	2009				Toolkit v5.0
1543	7	642	00N	1	no	03	2010				Toolkit v5.0
1544	1	382	00N8	4540.7	it	03	2005				Toolkit v5.0
1544	1	516	1	1389.1	it	06	2008				Toolkit v5.0
1544	1	614	002	3	no	05	2008				Toolkit v5.0
1544	2	512	00M2	8.5	ac	03	2009				Toolkit v5.0
1544	2	647	esm1	2.2	ac	03	2009				Toolkit v5.0

Add Row Copy to Cell Below Save Plan Wizard... Contract Wizard...

Johnny Chism AUTHENTICATED

