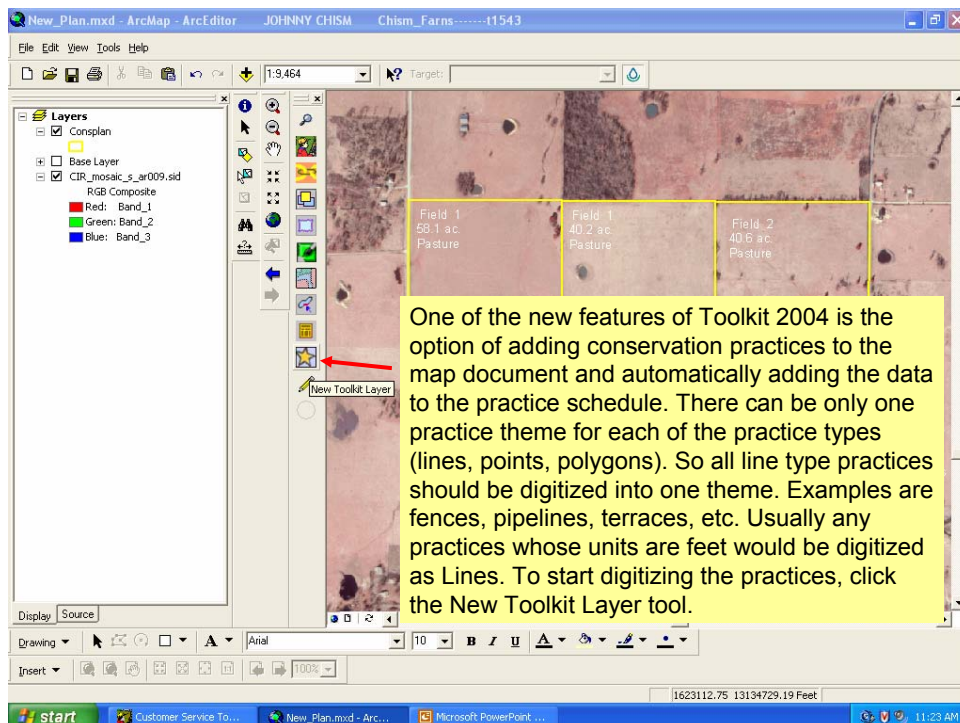
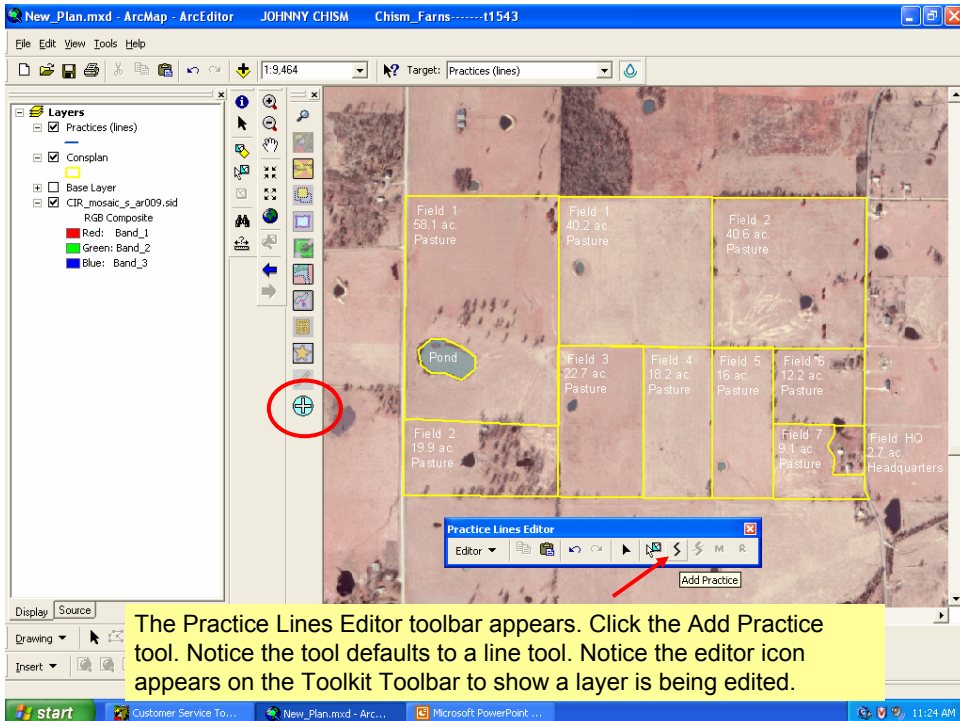
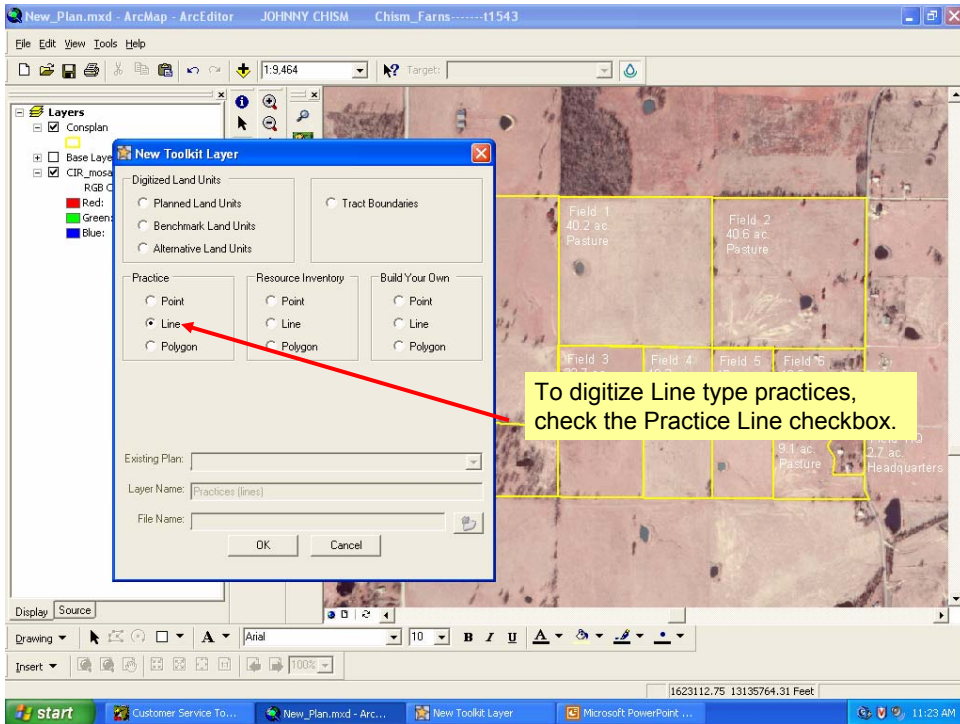
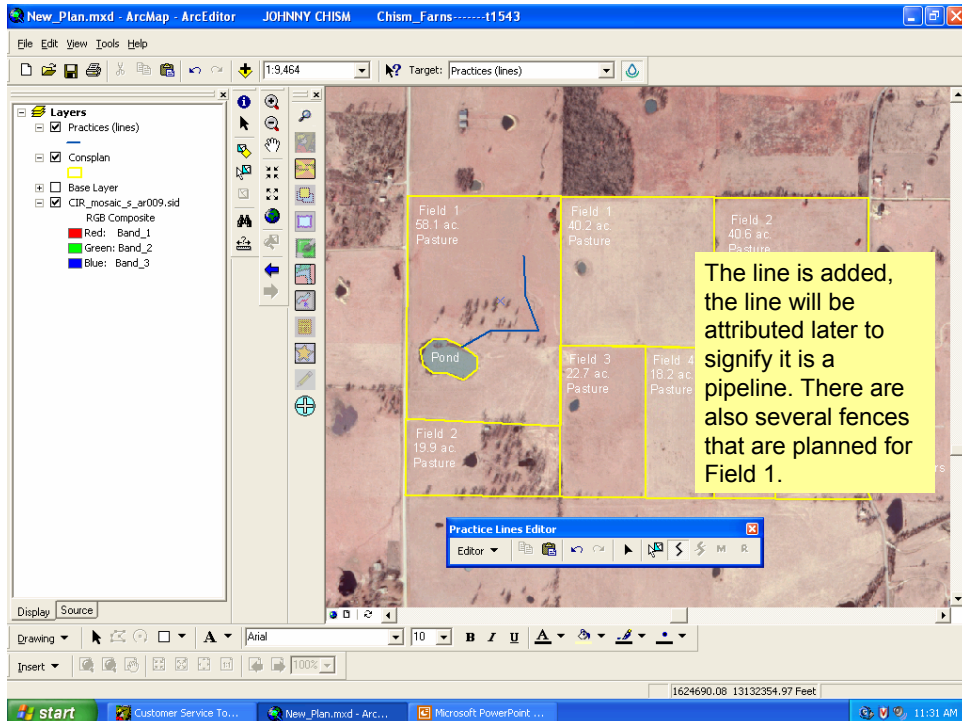
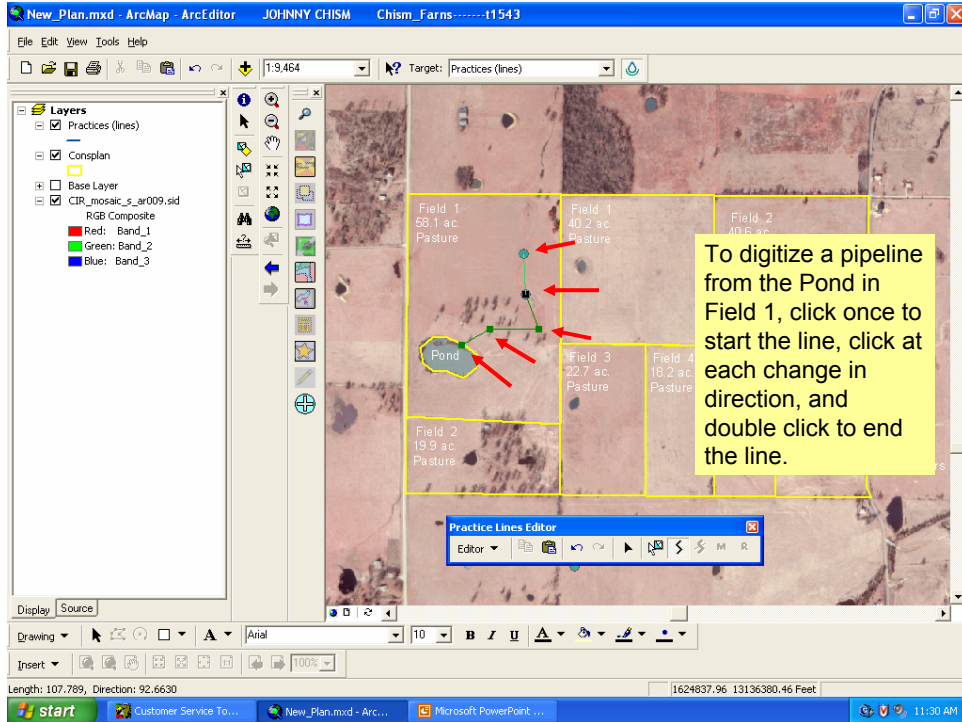


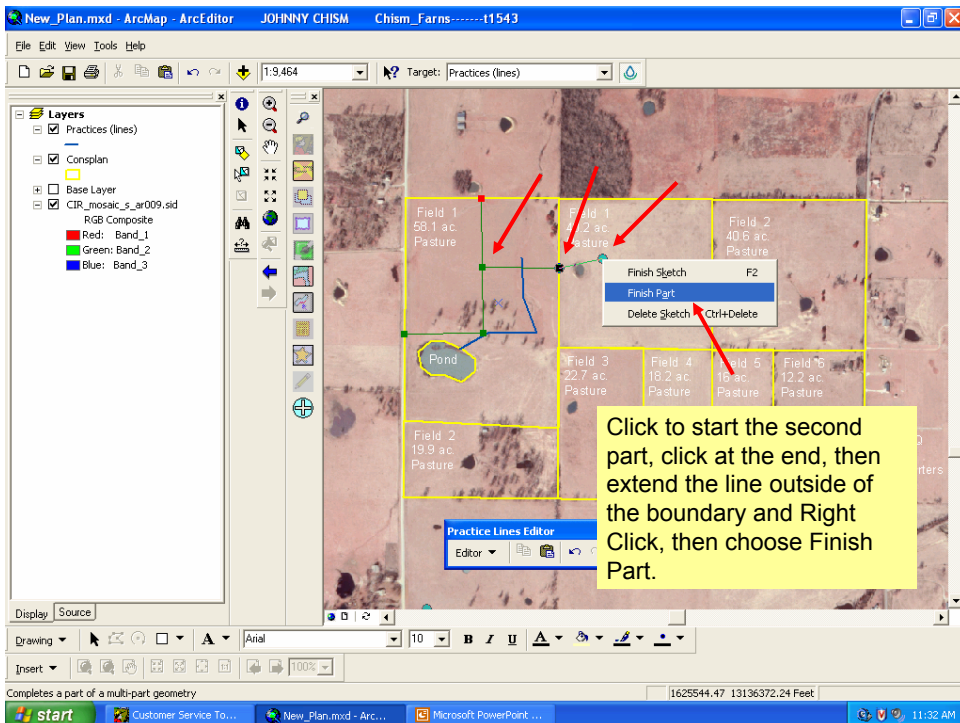
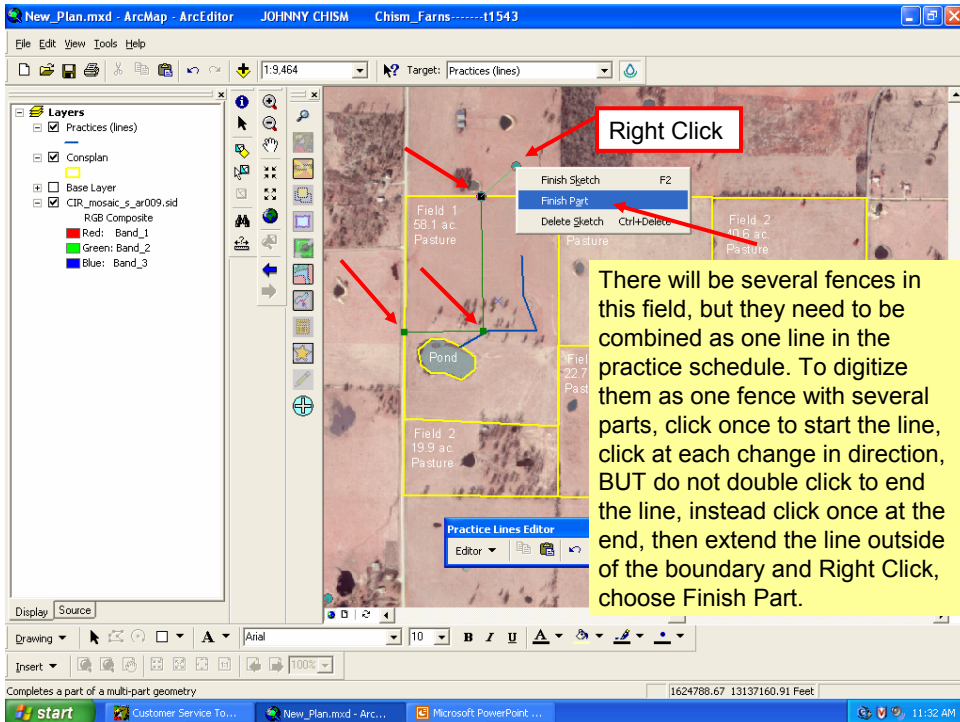
# Digitizing Line Type Conservation Practices

Toolkit 2004

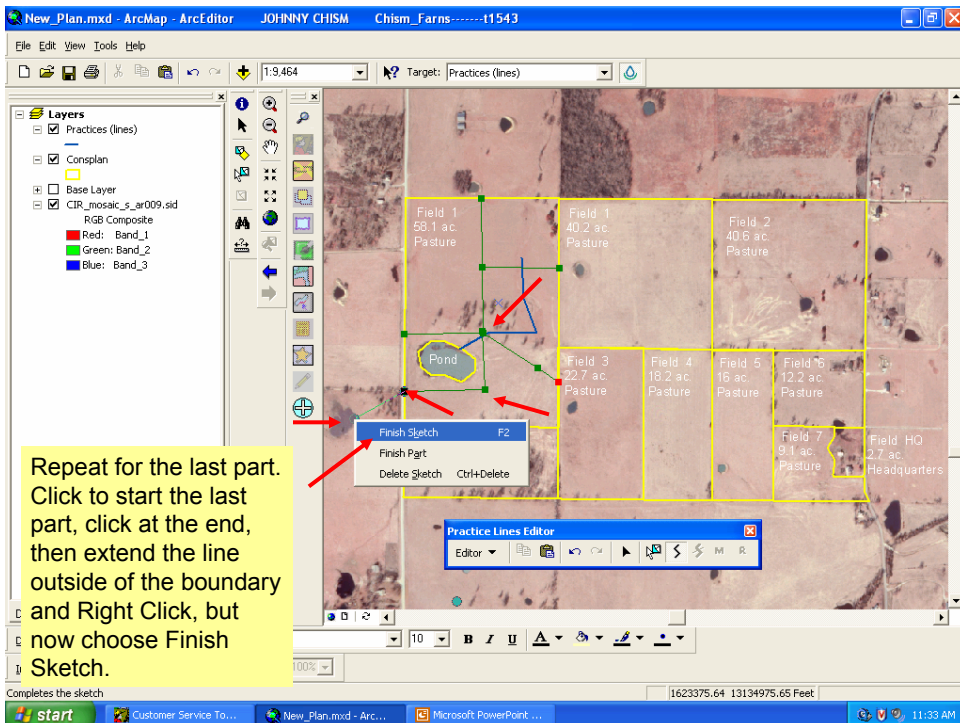
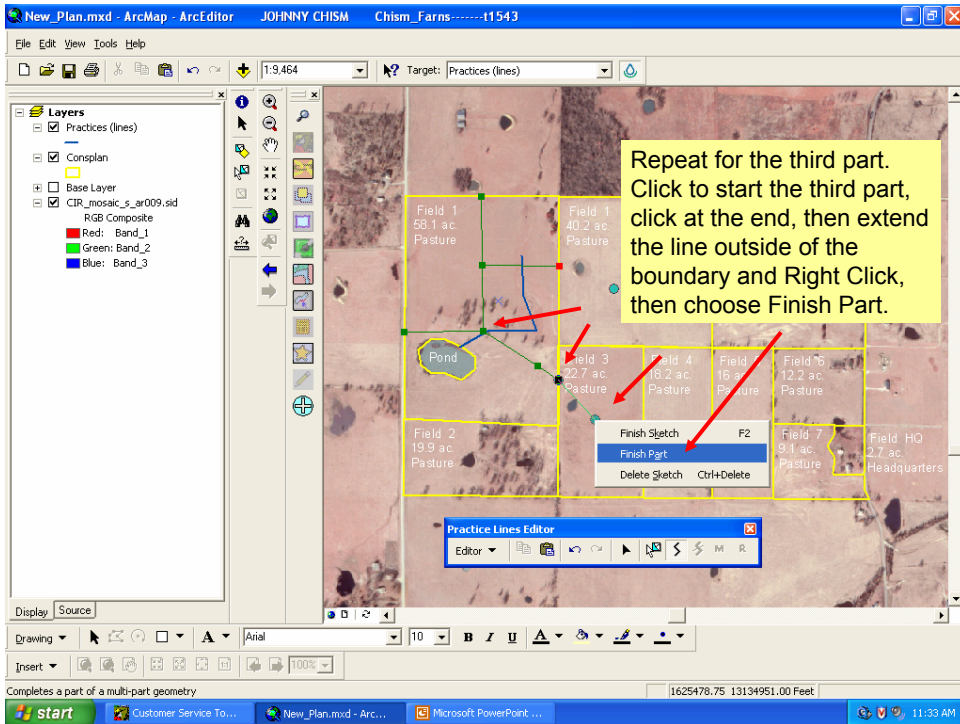


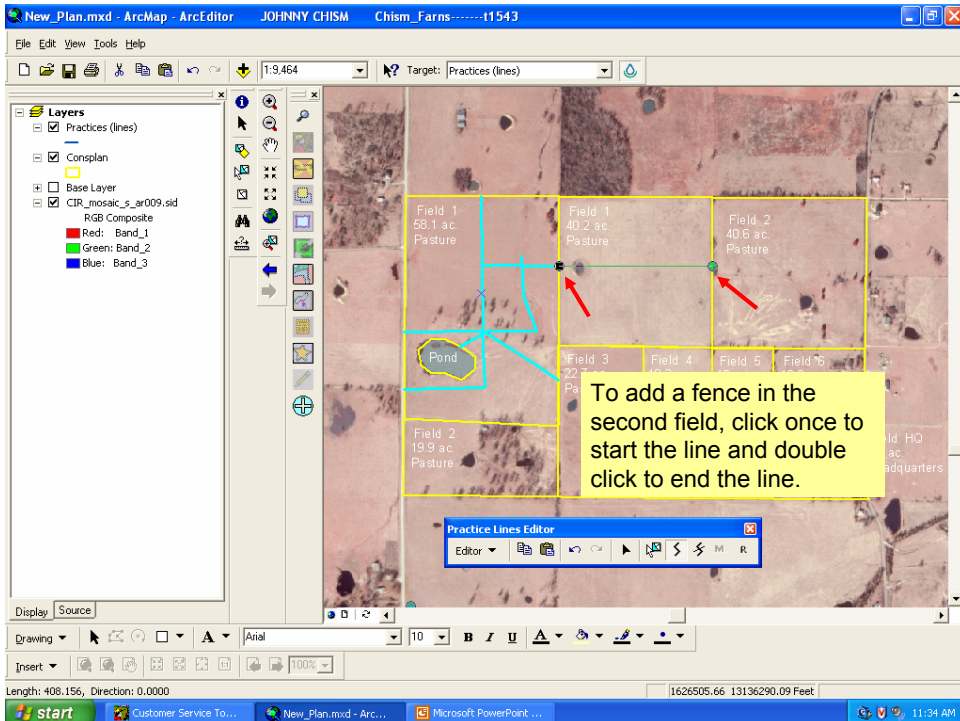
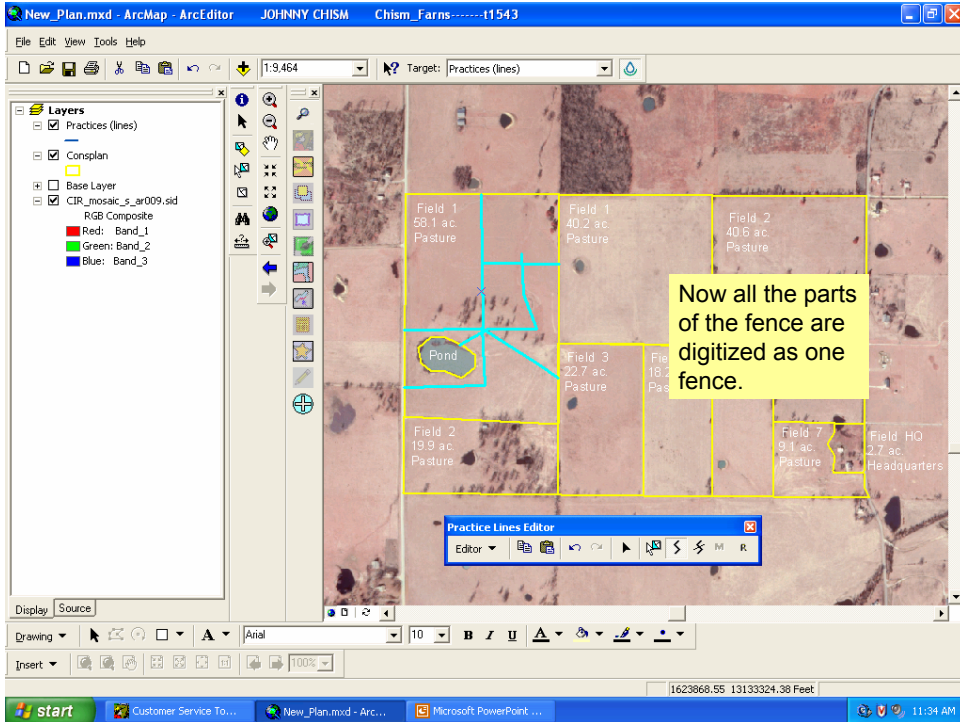


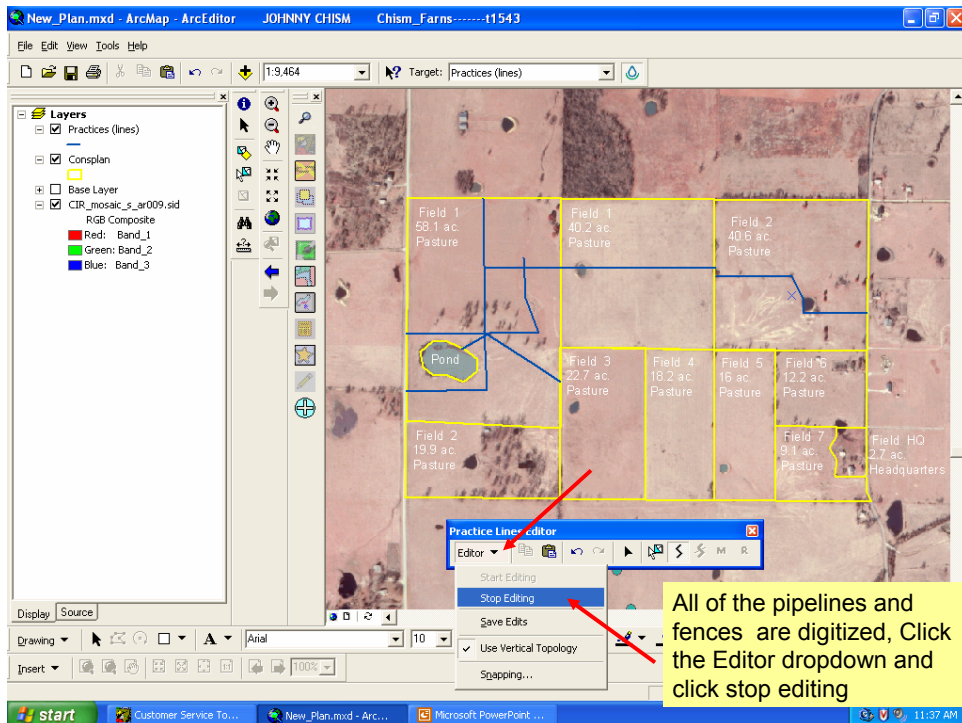
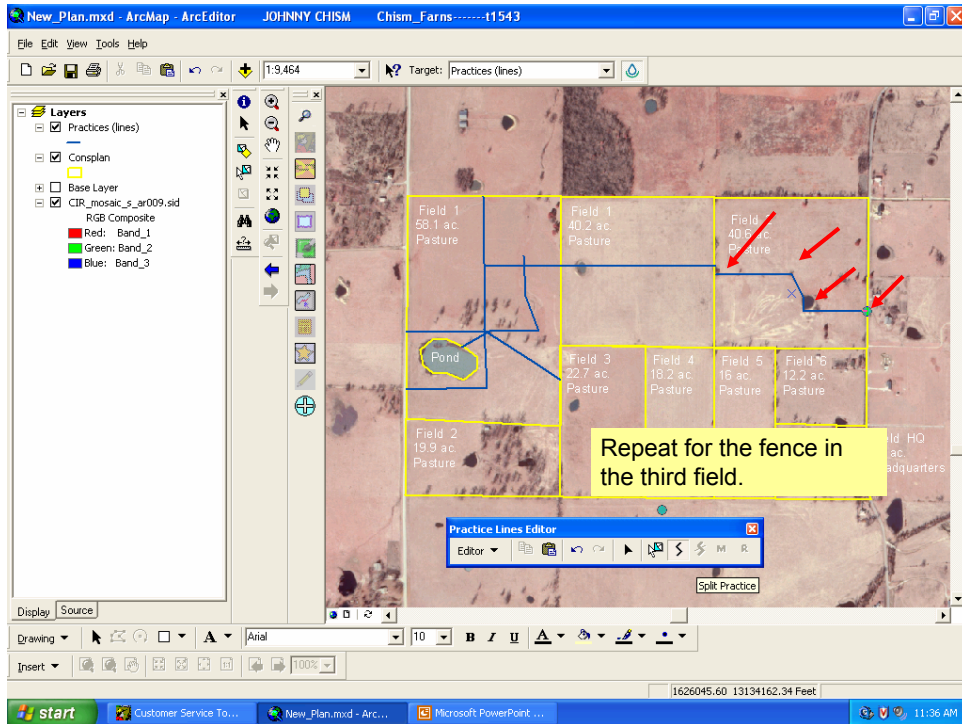




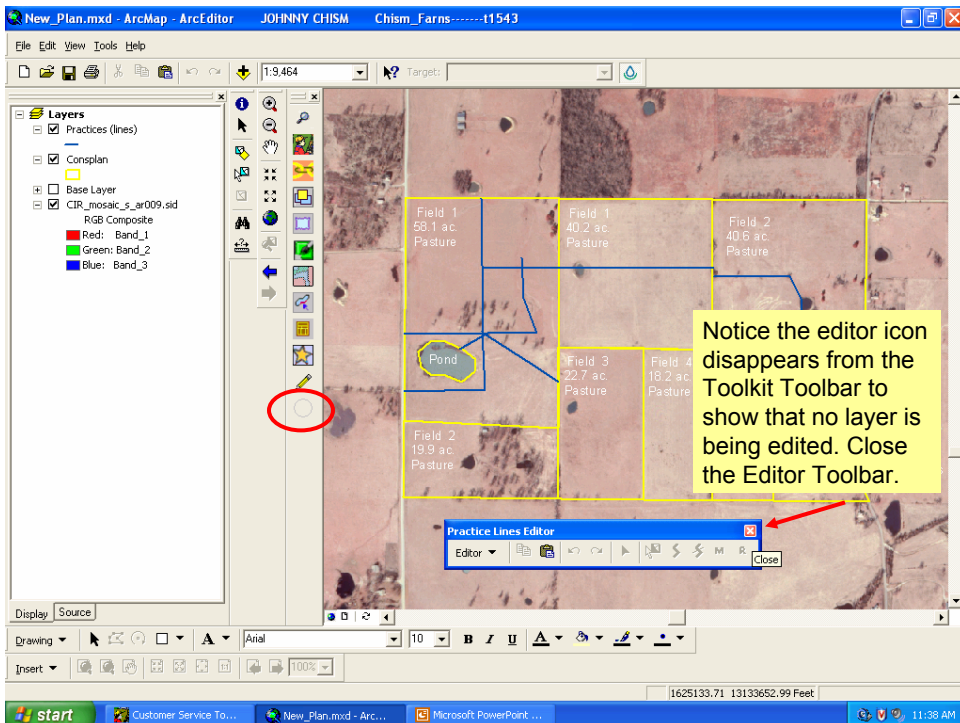
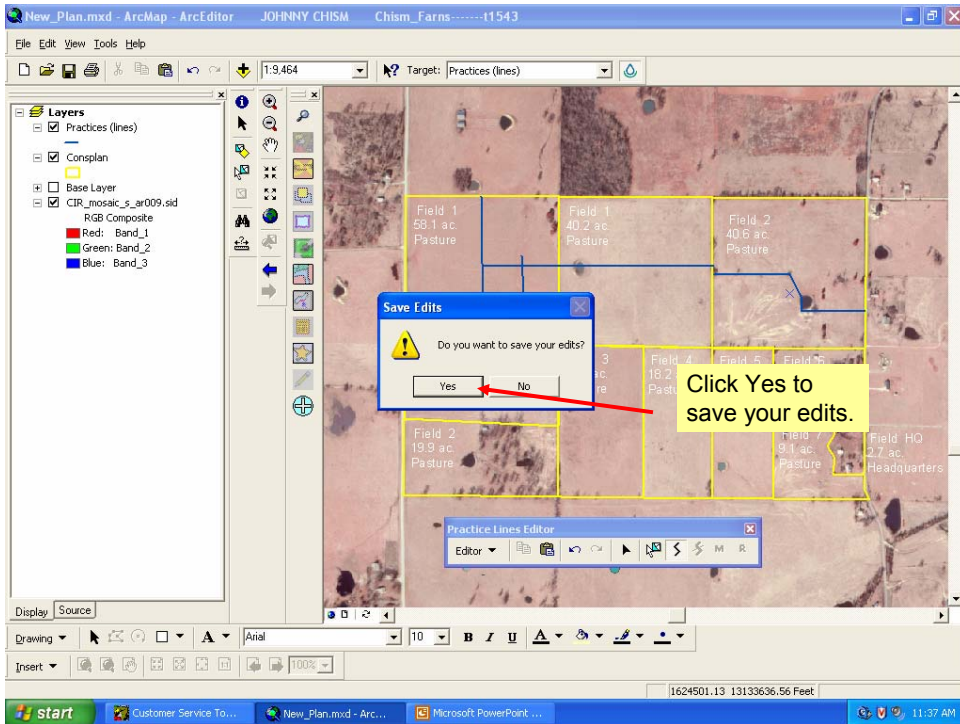




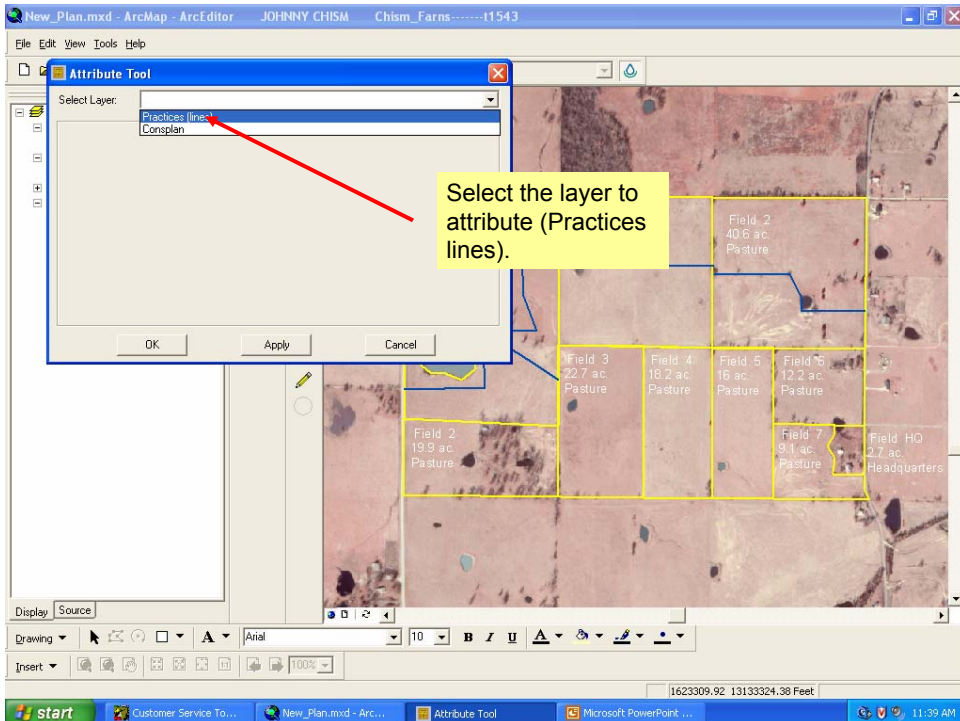
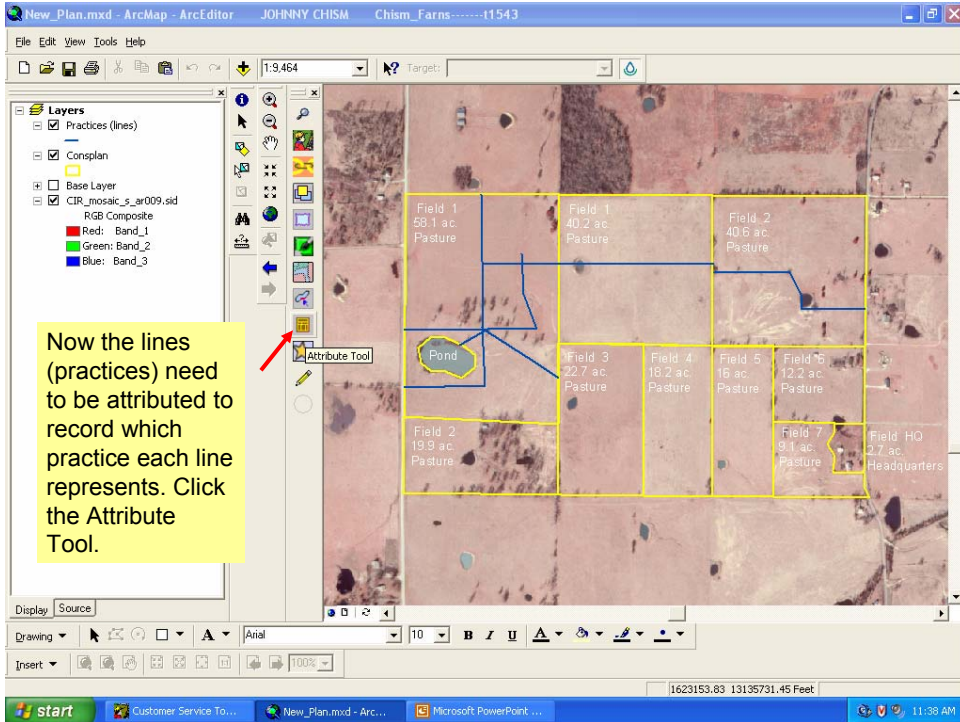


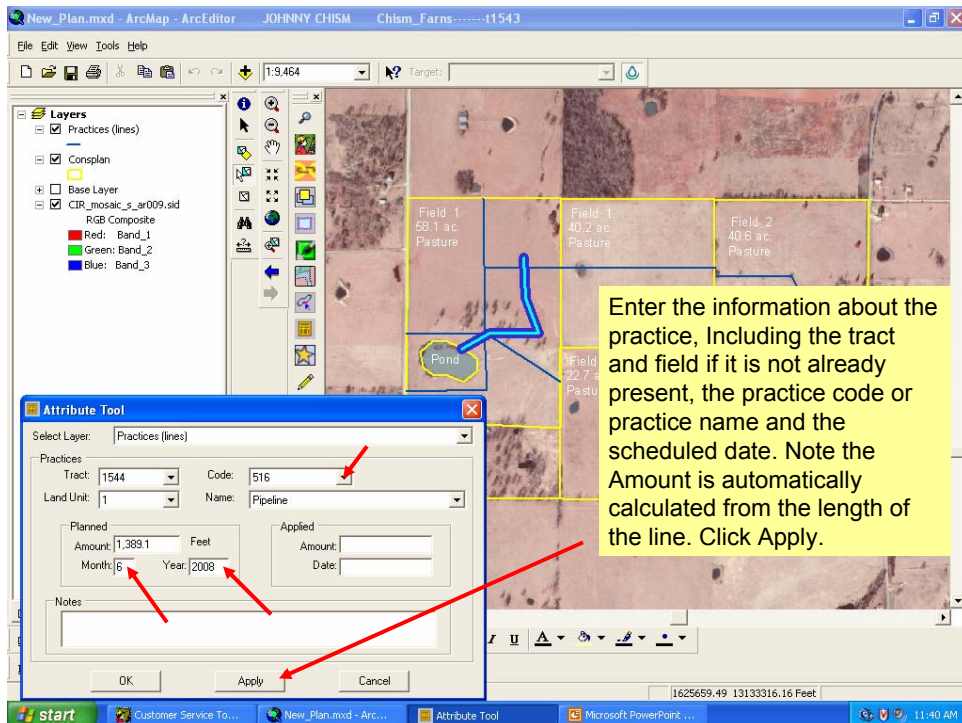
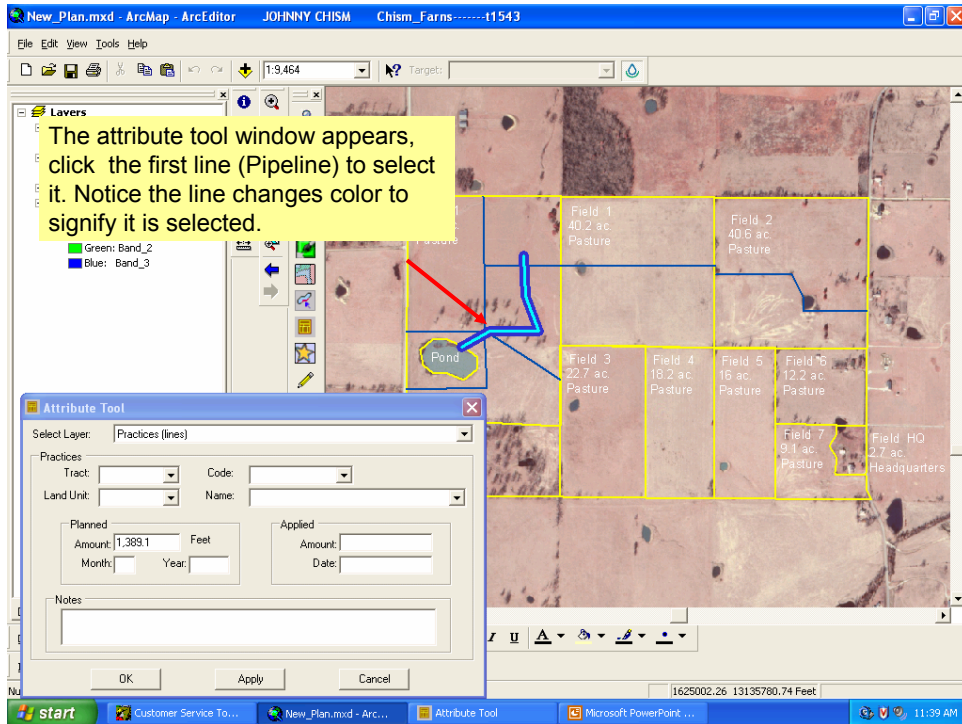


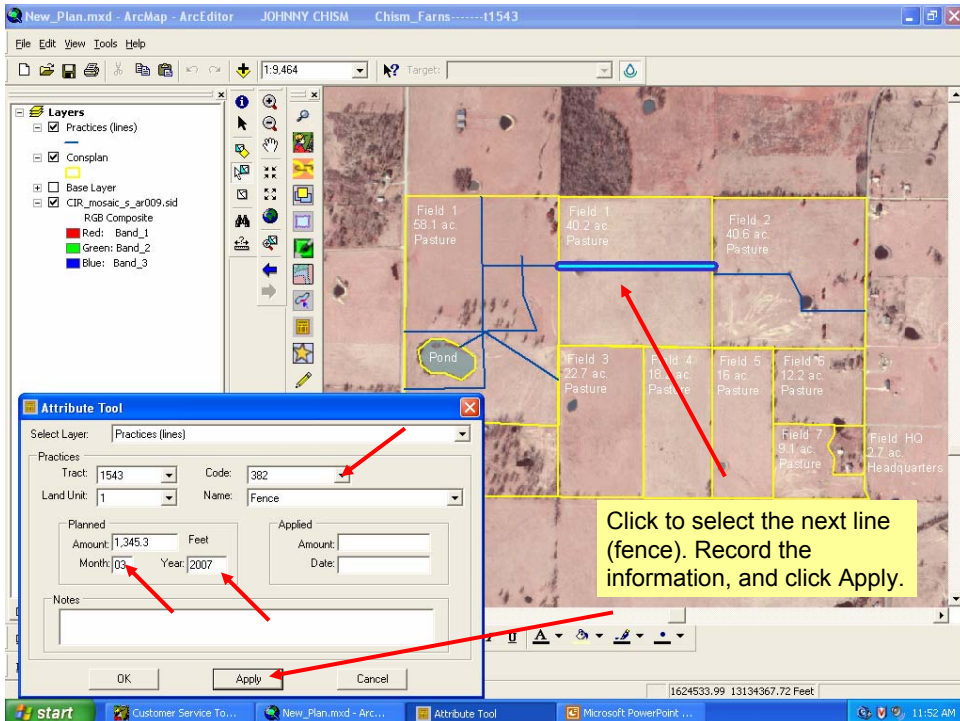
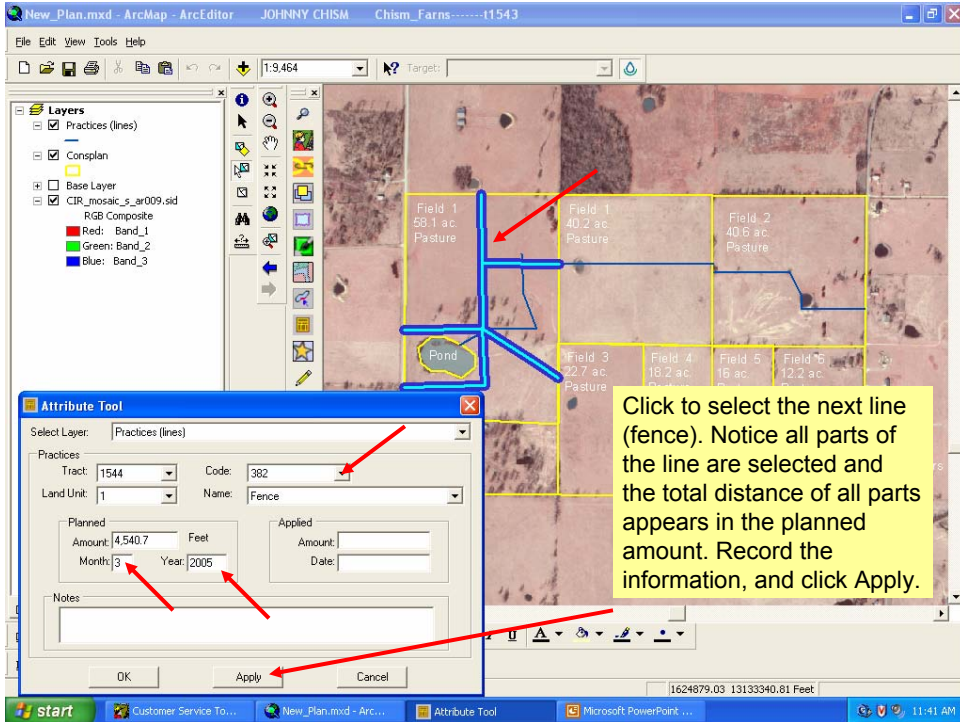




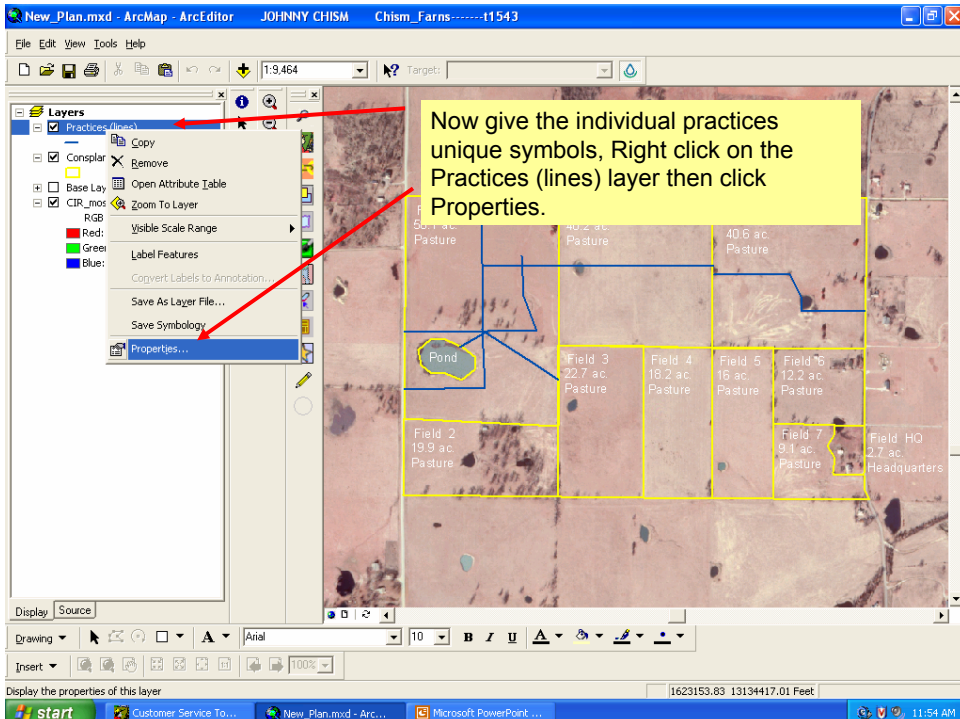
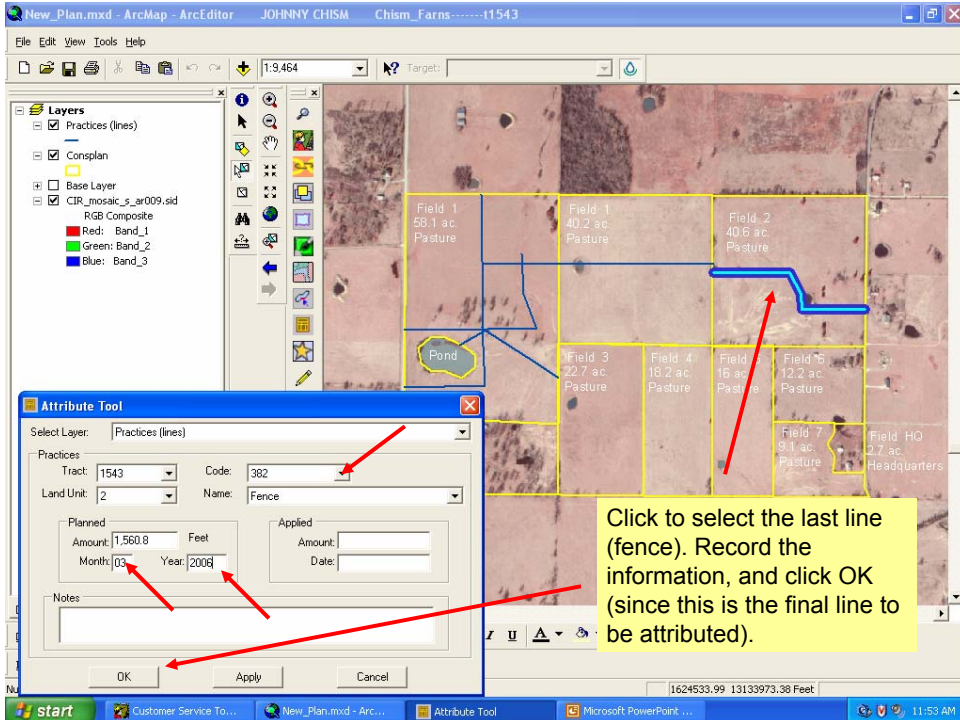




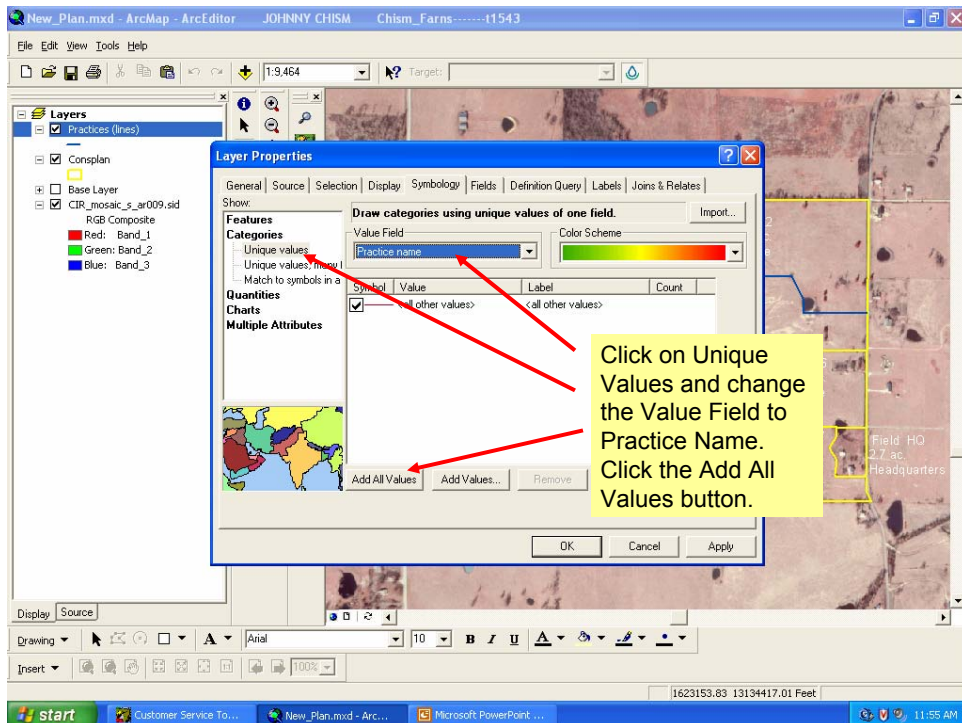
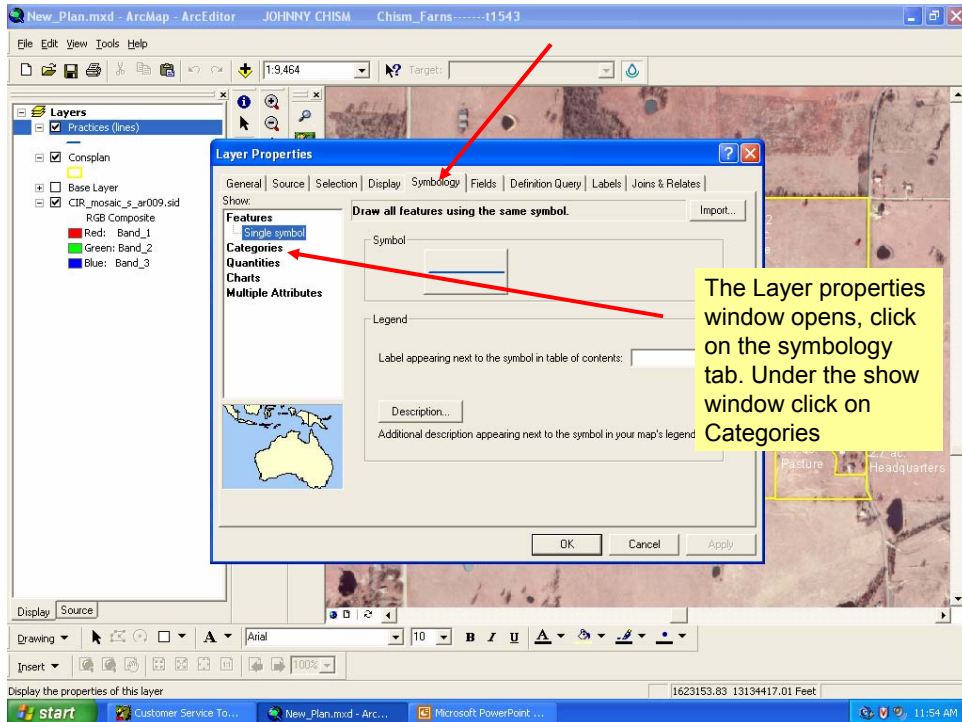


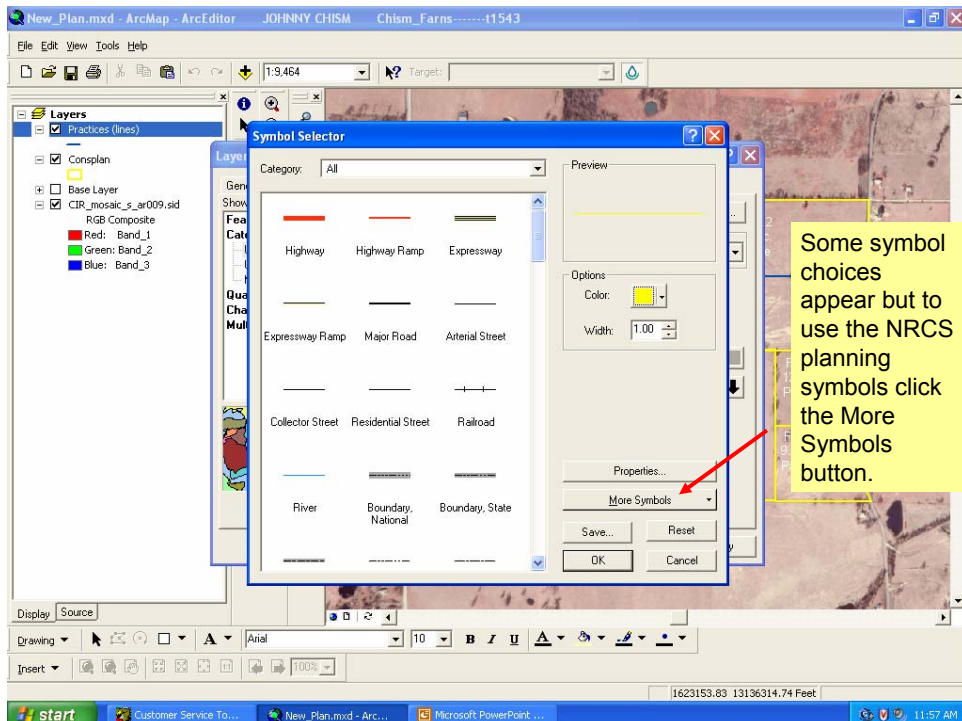
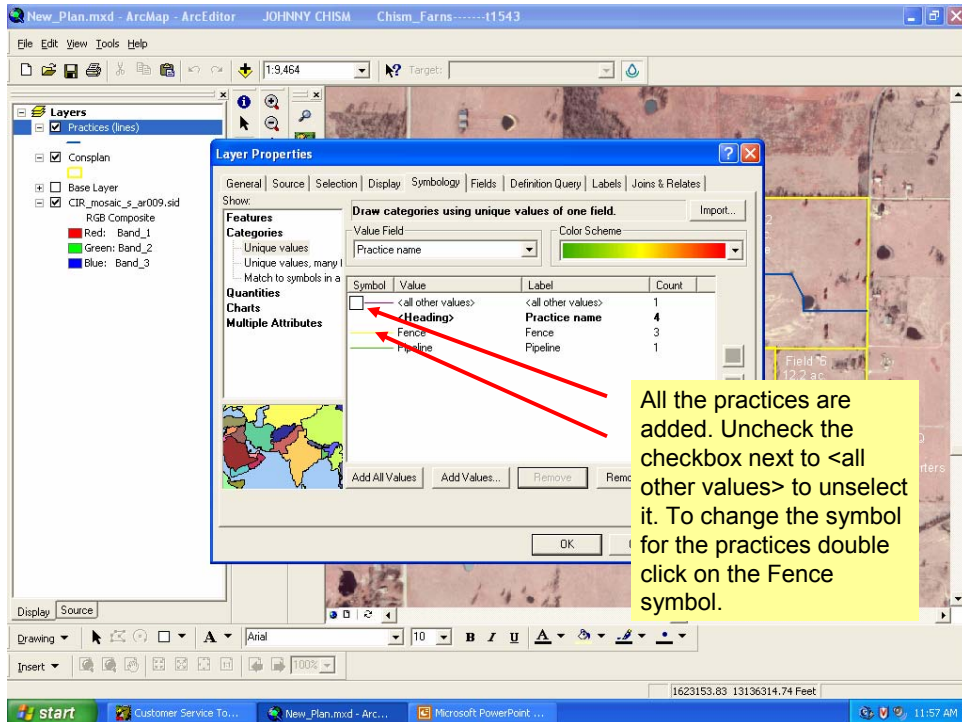


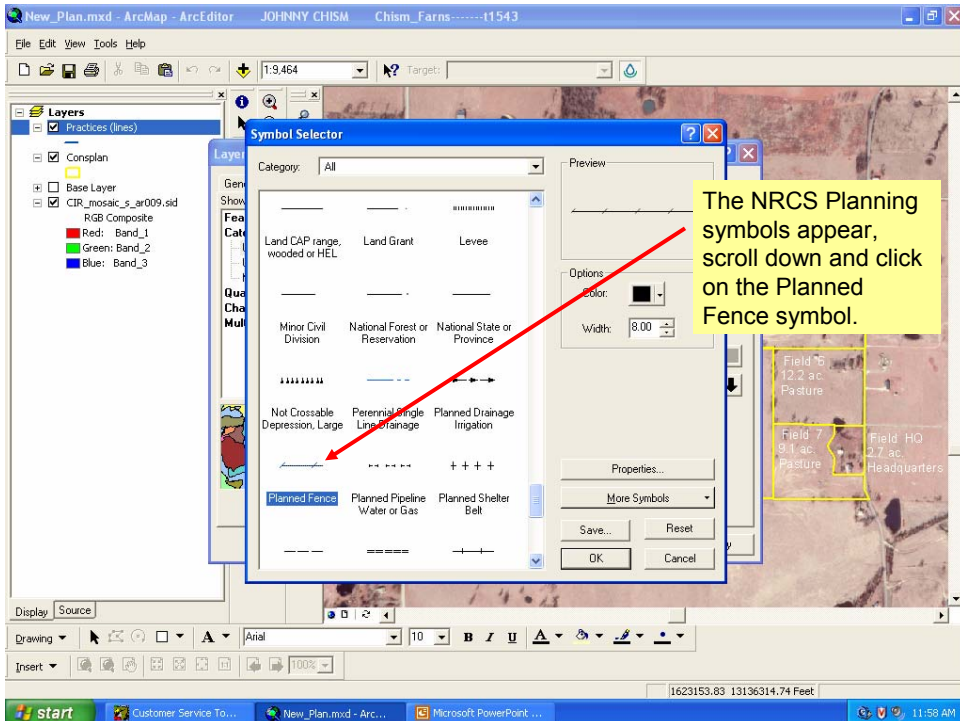
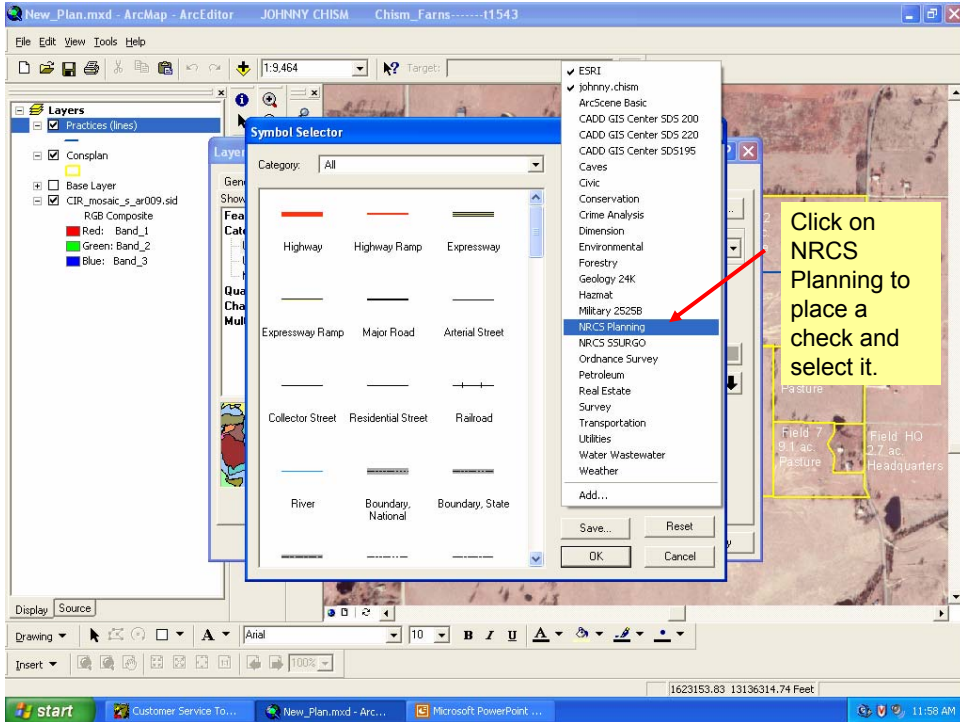




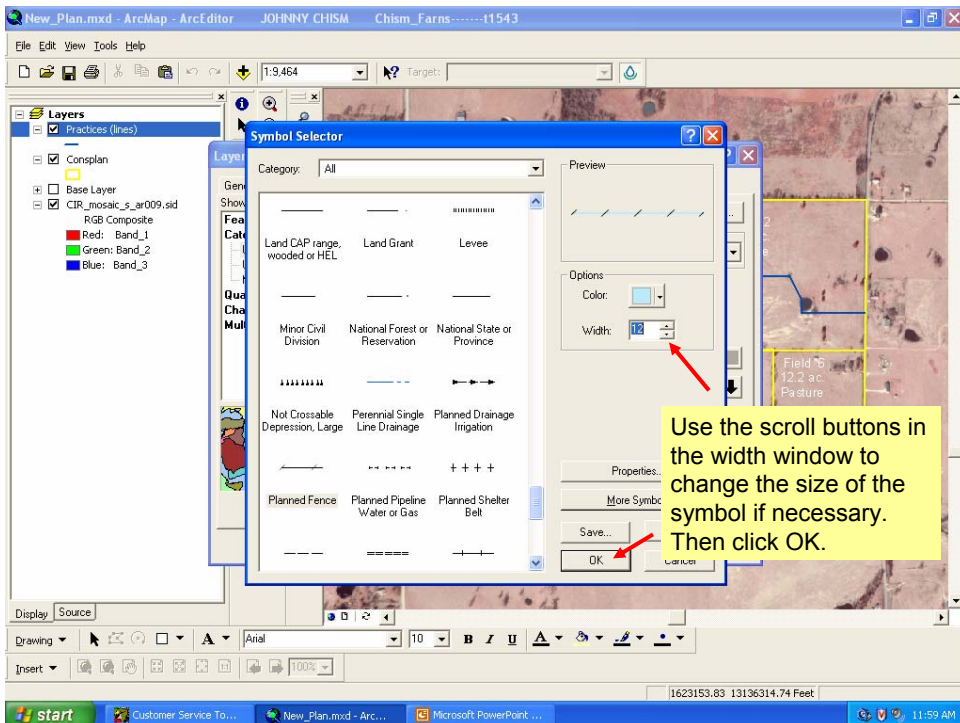
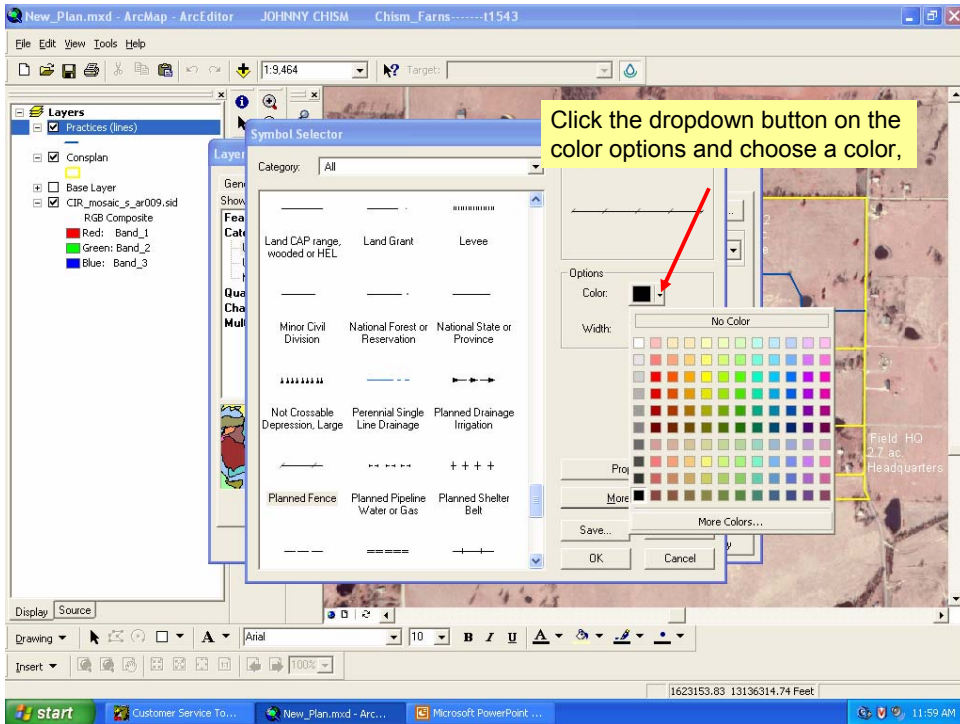




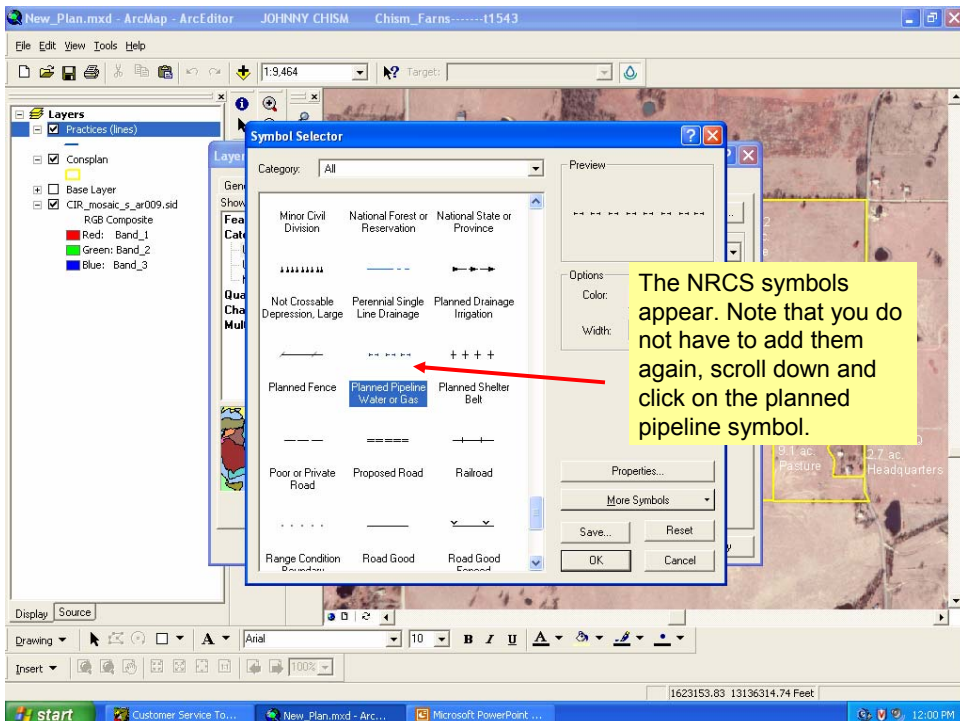
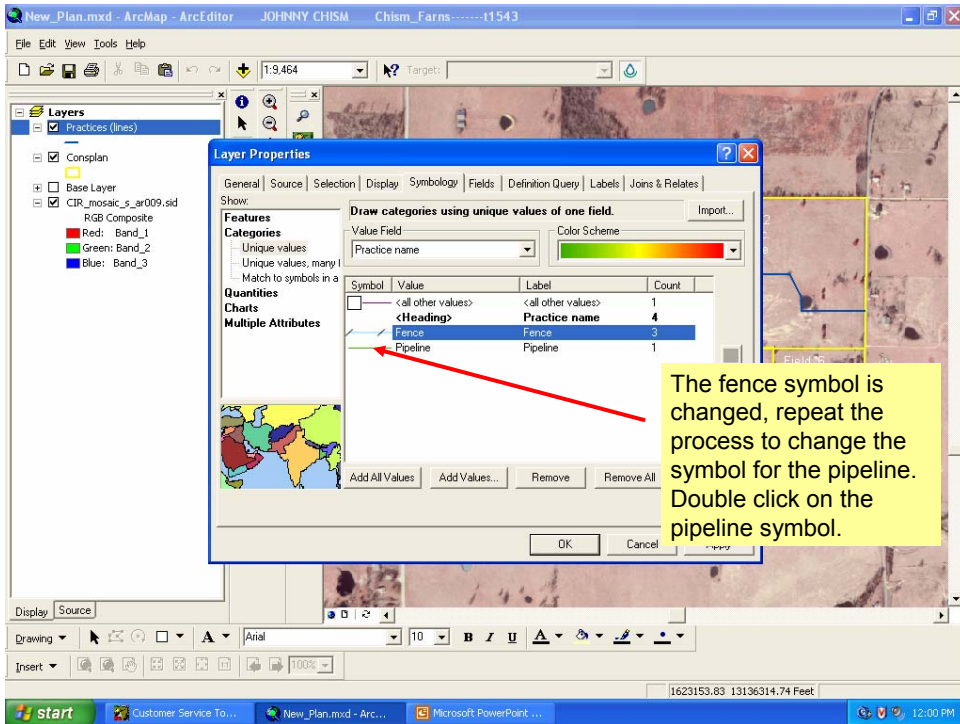


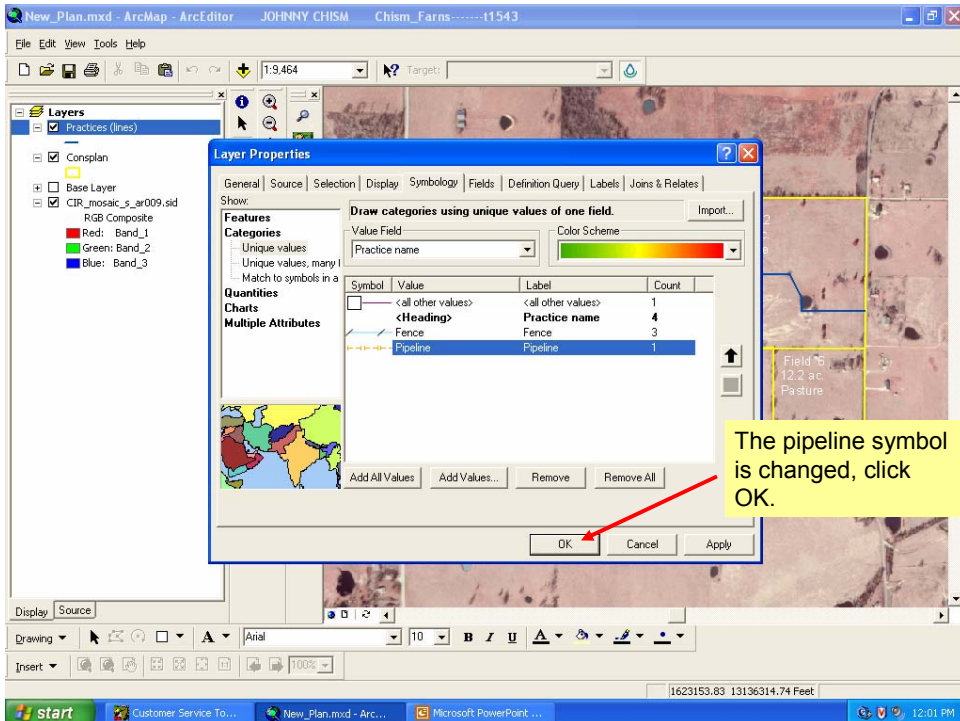
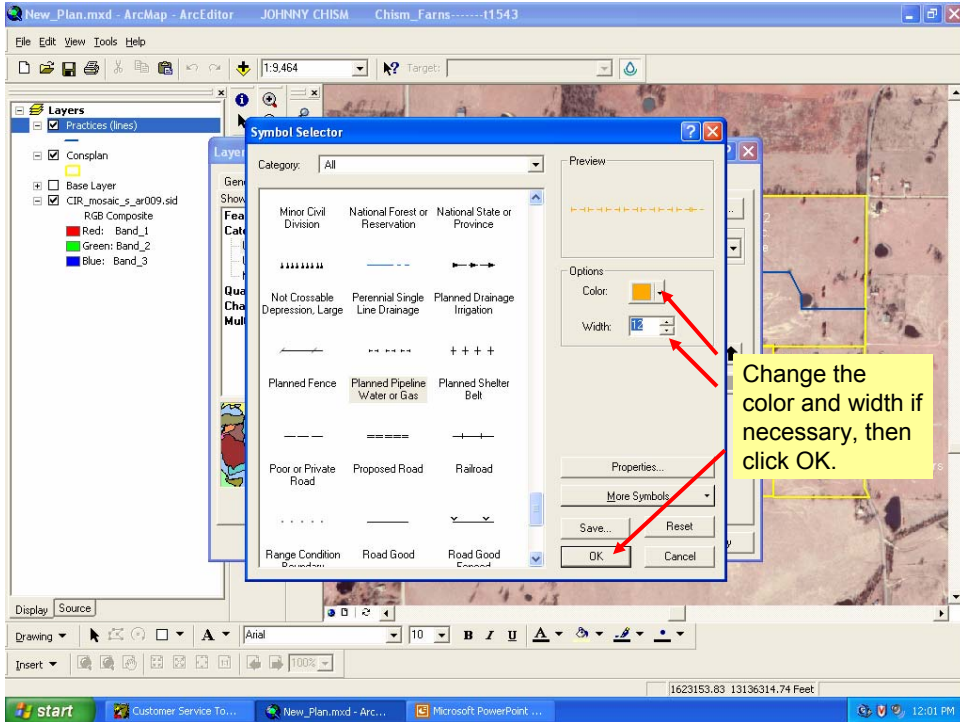


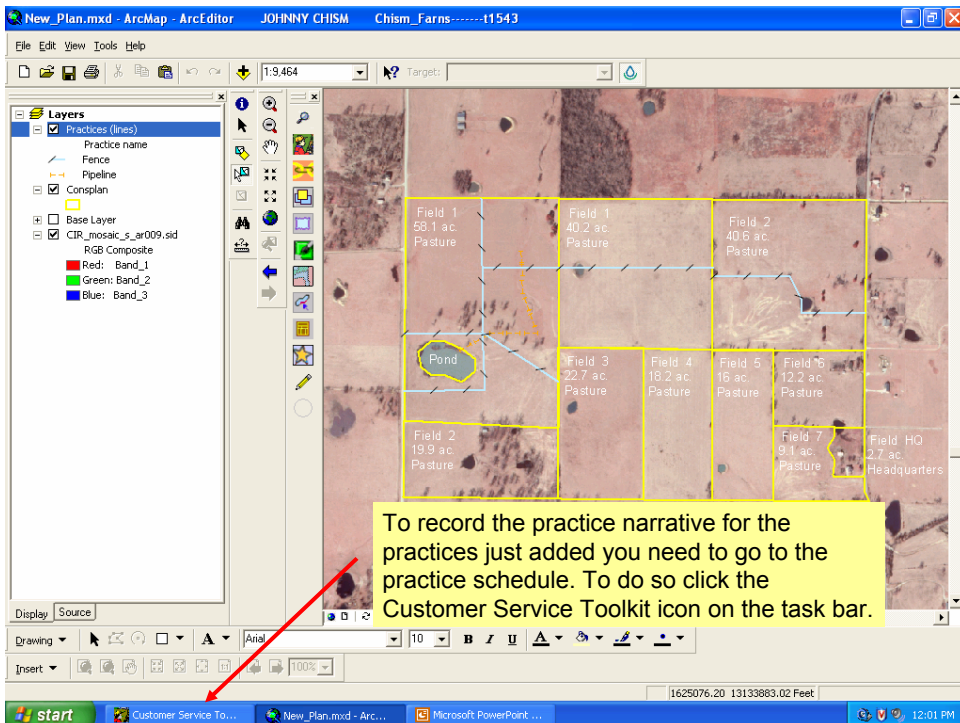
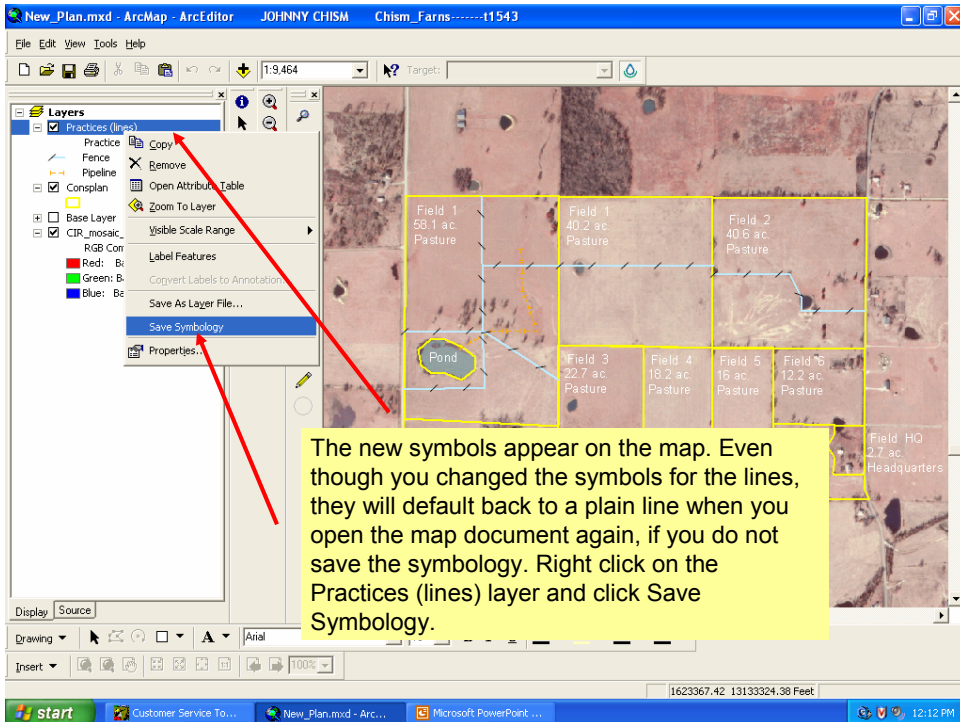












You are returned to Customer Service Toolkit, click the Practice Schedule tab if you are not already there. Select the plan by clicking the dropdown button in the Select a Plan window. The land units appear with the practices that were just digitized. Notice no narratives are entered for the practices just digitized, click on the Narrative line for the first practice.

Tract Number	Land Unit	Practice	Narrative	Planned Amou	Units	Month	Year	Applied Amou	Applied Date	Program	Source
1543	1	382		1345.3	lt	03	2007				Toolkit v5.0
1543	2	382		1560.8	lt	03	2006				Toolkit v5.0
1544	1	382		4540.7	lt	03	2005				Toolkit v5.0
1544	1	516		1389.1	lt	06	2008				Toolkit v5.0

The narrative window appears, choose a narrative and click OK.

ID	Text
00N	Construct a fence for use as a barrier to wildlife, livestock, or people.
00N1	Construct a fence around the pond to exclude livestock.
00N2	Construct a cross fence to better distribute grazing.
00N8	Construct a four wire barb fence at the location at the plan map. Follow the fencing specifications when constructing the fence.
00N9	Construct a crossfence to better distribute grazing. Follow the fencing specifications when constructing the fence.



The screenshot shows the 'Customer Service Toolkit' application window. The 'Practice Schedule' tab is active, displaying a table with the following data:

Tract Number	Land Unit	Practice	Narrative	Planned Amo	Units	Month	Year	Applied Amo	Applied Date	Program	Source
1543	1	382	00N8	1345.3	it	03	2007				Toolkit v5.0
1543	2	382	00N8	1560.8	it	03	2006				Toolkit v5.0
1544	1	382	00N8	4540.7	it	03	2005				Toolkit v5.0
1544	1	516	1	1389.1	it	06	2008				Toolkit v5.0

A red circle highlights the 'Narrative' column in the table. A yellow text box is overlaid on the table with the text: "Continue and add narratives for all practices. Notice all information except the practice narratives is brought over from the map document."

The screenshot shows the same software interface as above, but with the 'Plan Date' dropdown menu set to '2004'. A red arrow points from the '2004' dropdown to the 'Save' button at the bottom of the window. A yellow text box is overlaid with the text: "Enter the Plan Date for the Plan and click Save."

