

GOVERNMENTWIDE
ACCOUNTING & REPORTING
gwa
Modernization

***Will Your Agency be
Ready?***

AGA Conference
San Diego, CA
June 19, 2006

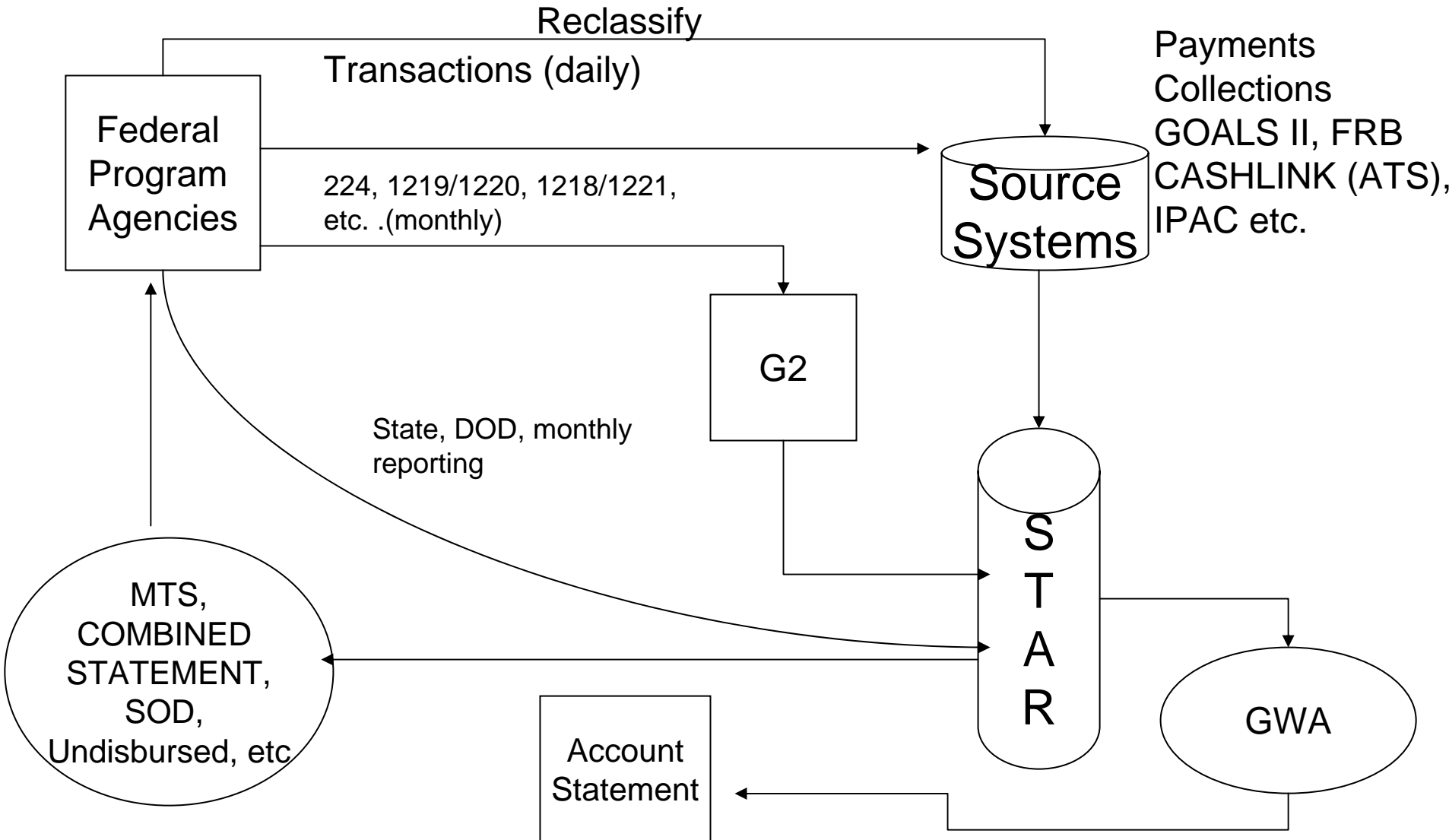


What is the GWA Modernization Project?

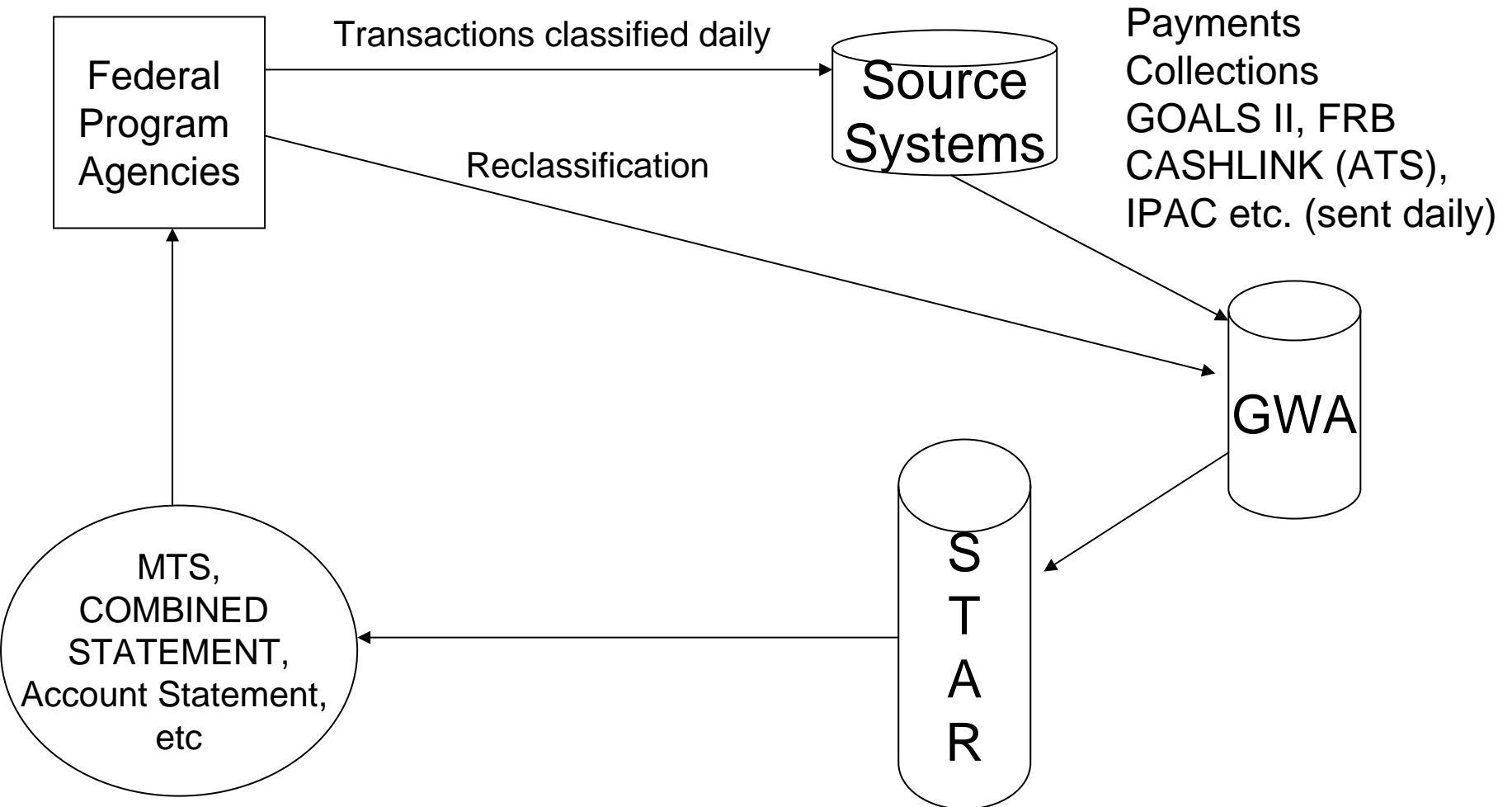
- **Massive redesign of Federal Government Central Accounting process**
- **Affects every federal agency; over 1,700 reporting locations (domestic and foreign)**
- **Changes over 40 years of agency business practices**
- **Many system interfaces**



Current Reporting Flow



Future GWA Reporting Flow



GWA Modernization – Time for Change

- **Evolution – What have we grown into?**
 - The current accounting and reporting process has become Inefficient, Outdated, and Untimely. (IOU)
- **Present Day Requirements – Time to pay off the IOU.**
 - Accelerated Reporting Requirements
 - President’s Management Agenda - Scorecard
 - Audited Financial Statements
- **The Future – Unknown....But we’ll be ready.**
 - Consolidated, web-based system for the collection, processing, reporting, and storage of all financial information.



How is GWA going to accomplish this?

- Fundamental Changes to the current process
- Developed a New Database
- Developing the infrastructure to Support GWA Players
 - ATM, Account Statement, CAFÉ, P224, SAM, IPAC, Collections, Payments
 - Automated Enrollment – User-based Access Control
- Phase in GWA Players
 - Authority Transactions, IPAC, Payments, and Collections
- Streamline GWA's Architecture
- Provide Agencies with GWA initiated Account Statement
- Support NTDO GWA Players
- Fully Replace Legacy Accounting System



User Enrollment

- Web-based user enrollment – links available on the GWA website and will be available on the GWA System login page by the end of this month
- Certifying supervisors must be enrolled first paper process
- User enrollment time frame has been reduced from 2-3 weeks to 2-3 days
- Agency users will also be able to reset their own passwords
- All Account Statement users are currently in the user provisioning system
- Current Release1 users (approx. 1200) started enrolling for ATM this month, June.



TAS Definition

- Acronym for Treasury Account Symbol (TAS)
- The receipt, appropriation, expenditure and other fund account symbols and titles as assigned by the Department of the Treasury
- A 27-character field – with 24 currently identified characters
- Supercedes 21 position TAS and any other suggested formats



BETC Definition

- Acronym for Business Event Type Code
- An 8-character code that indicates the type of activity being reported (e.g. receipt, disbursement, etc)
- BETC determines the transaction effect on the Treasury Account Symbol's FBWT.
- BETC replaces transaction codes and standard sub-classes but at a more intuitive level of detail



Shared Accounting Module SAM



- **Utility** responsible to ensure a valid TAS/BETC is posted to all transactions entering the GWA System
- **Developed to assist agencies** in complying with GWA standard transaction classification
- **GWA will provide SAM** with a table of **valid TAS/BETCs**
- **Agencies will define** in SAM valid TAS/BETCs for:
 - ✓ Default rules and
 - ✓ Classification (Ckey) translations



- **CAFE will send SAM transactions with:**
 - ✓ TAS/BETCs or
 - ✓ CKeys

- **SAM will:**
 1. Validate TAS/BETC or
 2. Derive valid TAS/BETC from Ckey or
 3. Default a valid TAS/BETC

- ✓ Return transactions to GWA w/valid TAS/BETC.
- ✓ Provide valid TAS/BETC reference lists for Agencies



IPAC Impact



IPAC – Agency Impact

- ◆ IPAC added new fields to collect both the sender and receiver TAS/BETC on every detail record
- ◆ All IPAC transactions will be required to have both sender and receiver TAS/BETC's
- ◆ A TAS/BETC list for IPAC is available on the IPAC/GWA web pages
- ◆ F Accounts should not be used in IPAC



IPAC – Agency Impact

- Must work with your trading partners – Now
- Pilots – Effective May 1, 2006
- All Agencies
- Transition to a Single TAS format instead of the 6+ formats available today – TBD



Partial 224 Agency Implementation



- **Web based application**
 - Ability to turn off sections of the P224
 - Provides for reclassification capability by using only section I of the P224.

- **GWA Reporters by:**
 - ALC
 - Source system
 - Categories



Reporting Scenario

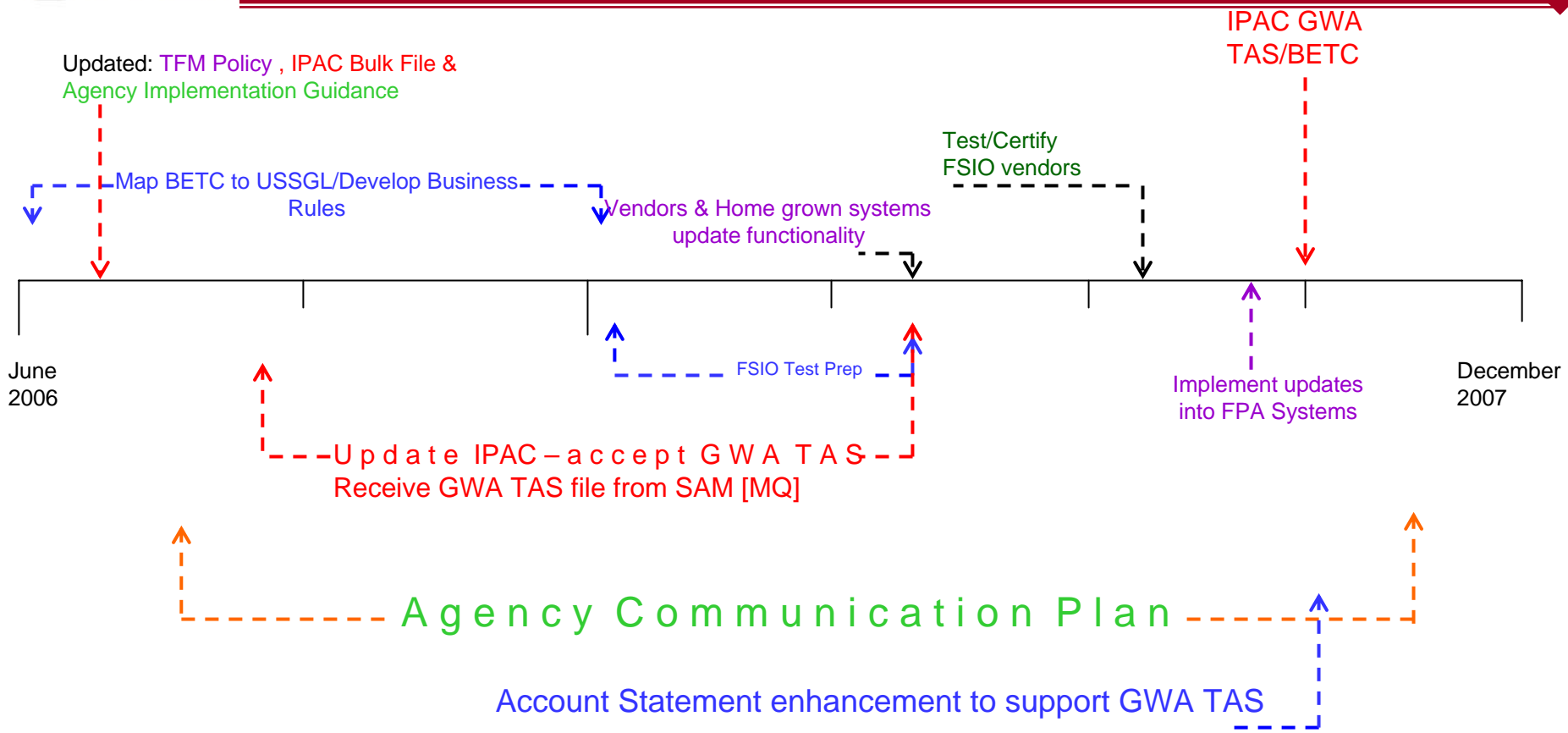
Trading Partners

- **ALC #1 = GWA REPORTER – Intra-governmental**
 - Transactions are classified with TAS/BETC when submitted
 - Transaction posted thru GWA to STAR
 - IPAC Transactions will not be reported on P224
 - Report Payments – section II
 - Report Collections – section III
 - Report Section I for Payments & Collections classification ONLYand any reclassified transactions (incl. IPAC)

- **ALC #2 = NON-GWA Reporter**
 - Transaction will need TAS/BETC when submitted
 - Transaction posted to STAR
 - Agency will still classify on their SF224 at end of month
 - Continue to use current 224



Proposed Timeline for Implementation of IPAC GWA TAS/BETC



Advantage of New Date IPAC GWA TAS/BETC

- Remove complexity of having different TAS [STAR vs. GWA] formats
- FSIO vendors certified for IPAC GWA TAS/BETC functionality
- All Core Financial Systems updated to accept GWA TAS/BETC

SAM –

- Automatically provide F account exceptions to IPAC
- Public Website available to agencies for TAS/BETC download

More time for Change:

- To work out issues related to F accounts and other Policy changes decisions
- To provide agencies time to communicate with their trading partners
- To implement changes in agency systems



GWA Account Statement



The GWA Account Statement

- **Definition:**
 - An online, daily refreshed, query based application designed to provide each Federal Program Agency with a central location for retrieving information relating to its Fund Balances with Treasury.
- **Objective:**
 - Designed to assist Agencies with their reconciliation processes.
 - Replaces the Monthly Undisbursed Ledgers and Trial Balance reports. (FMS – 6653, 6654, 6655) except for Unavailable Receipts accounts.
 - **Effective June 30, 2006**
- **Benefits:**
 - Access – Online at the Department level
 - Timeliness – Refreshed daily
 - Flexibility – Full query capability at both TAS and ALC level
 - Clarity – Clear description of balance and transaction data



The GWA Player

Membership Has Its Advantages



- **Modifications to SPS and PAM**
 - 100 TAS/BETC's per Payment - Tentative
 - 100 TAS/BETC's per Schedule – Tentative

- **Routine to roll up Bulk File data by TAS and Amounts.**

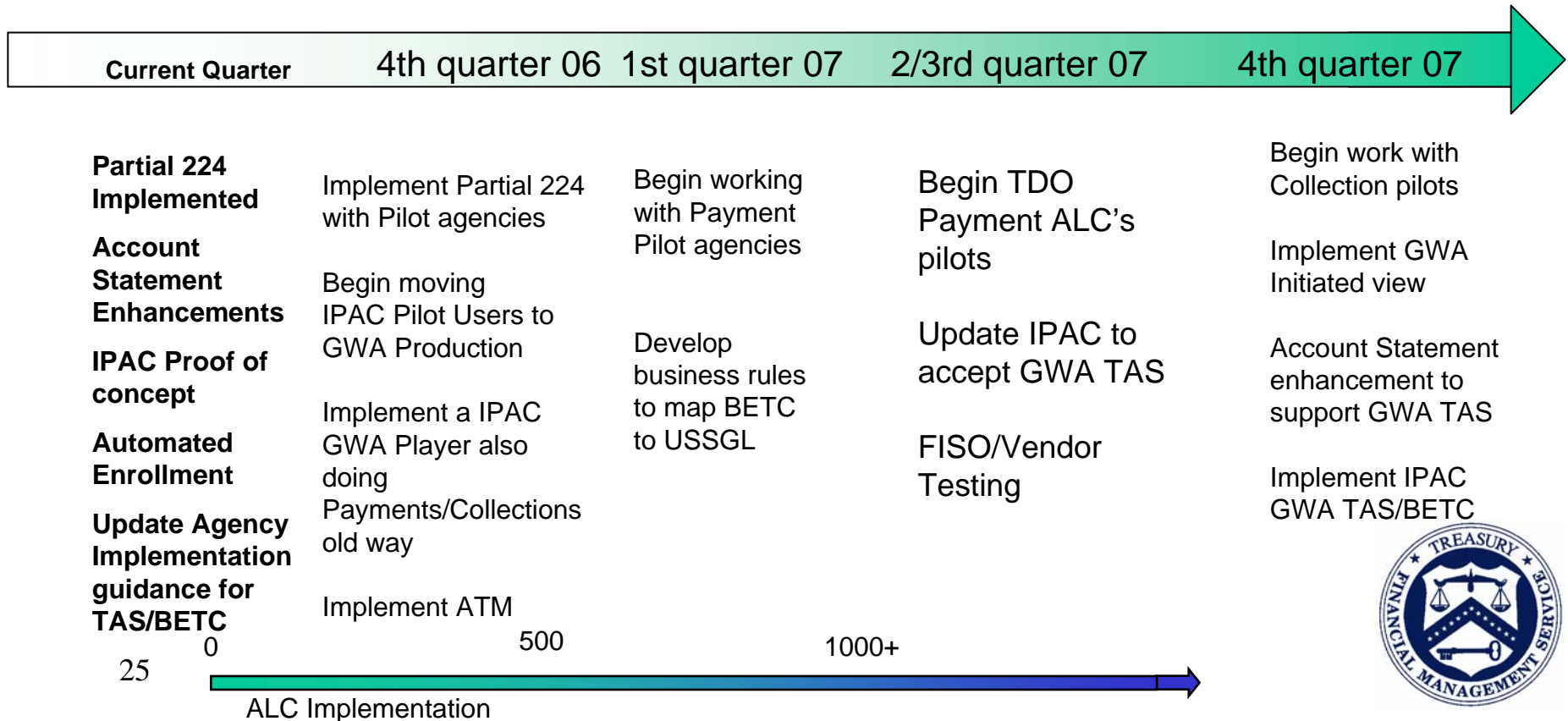
- **Out of Balance Reports**

- **Aftermath**

- **Level of Detail on Account Statement**
 - Schedule level



Agency Implementation Time line



The Cheat Sheet

- Sunset of the Undisbursed Application – June 30, 2006
- New User enrollment process – Available Now
- Valid TAS/BETC's on all IPAC Transactions – New strategy being developed
 - Must use Proper TAS/BETC
- Proper classification will be a must!!
 - More control over TAS'
 - Implementation of ATM – August 2006
- Look at upgrading your COTS Package or Modify your Legacy system
 - Vendors have passed Partial 224 (P224) testing
- Valid TAS/BETC's on Payment Transactions – Pilots begin mid 2007
 - 100 TAS/BETC's per Payment
- Valid TAS/BETC's on Collection Transactions – 2008
- Implementation of GWA Initiated Account Statement - 2007
- Review your systems and process that are based on monthly processing and determine how to do business by reporting TAS/BETC's daily on each transaction



GWA Modernization Project

- Michael Norman – (202) 874-8788 – michael.norman@fms.treas.gov
- Anna Hill – 202-874-9868 – anna.hill@fms.treas.gov
- Web site – www.fms.treas.gov/gwa
- Email box - GWA.Project@fms.treas.gov
- Enrollment - GWA.Enrollment@fms.treas.gov

IPAC Project

- Susan Markland -(202) 874-9816 – susan.markland@fms.treas.gov
- Lori Makle, (202) 874-8782 – lori.makle@fms.treas.gov

GWA Project Agency Outreach

- Carolyn Dunston - 202-874-7491 – carolyn.dunston@fms.treas.gov
- Peter Moore – 202-874-6578 - peter.moore@fms.treas.gov

