



Transmission Project Updates

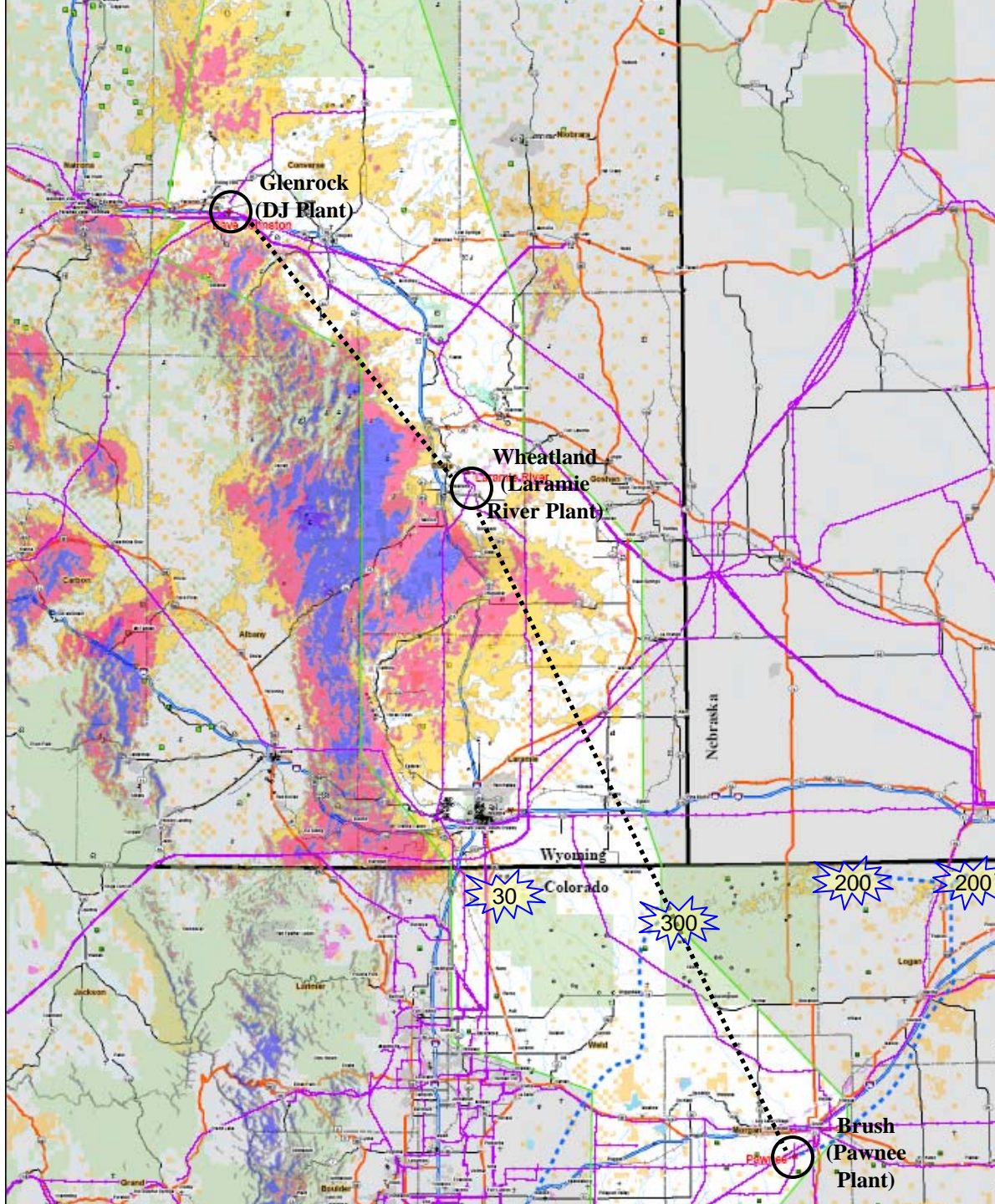
Wyoming-Colorado Intertie

High Plains Express

Jerry Vaninetti, Vice President
Trans-Elect Development Company, LLC

Colorado Clean Energy Development Authority (CEDA)
Board Meeting – February 11, 2009
Denver, Colorado

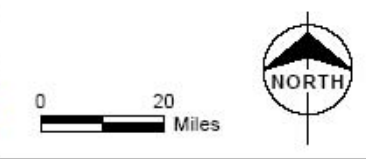




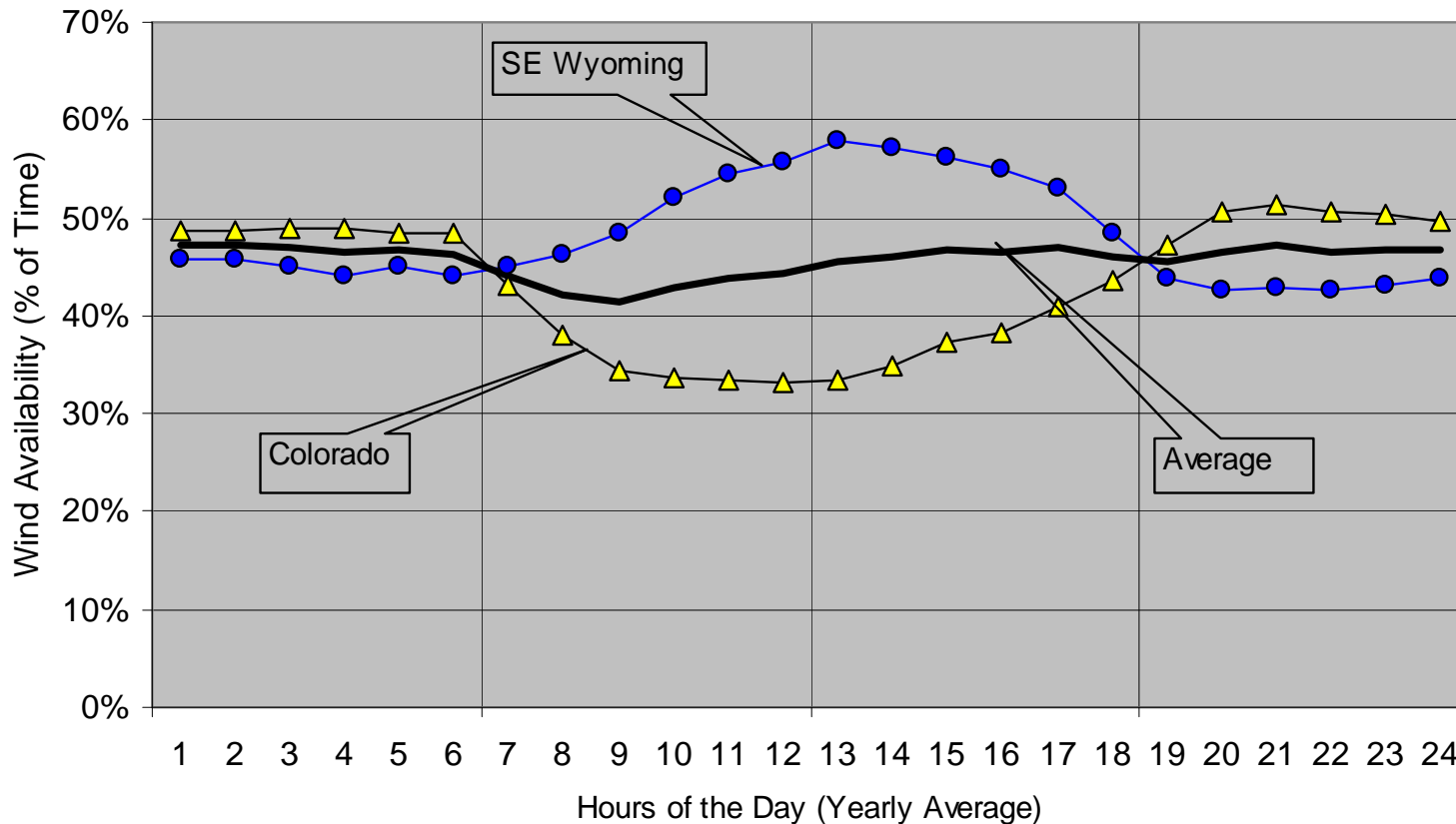
Legend

- Study Area
 - Existing Transmission Lines
 - Lines Currently Under Construction (Approximate Location)
- Wind Power Class**
- Excellent
 - Outstanding
 - Superb
- Constraints**
- Airport / Heliport
 - Church
 - Cemetery
 - School
 - Park
 - Mine
 - Oilfield
 - Well
 - Municipal Areas
 - Federal Lands
 - Conservation/Wildlife Areas
 - State Lands/Trust Lands
 - State Parks

- Transmission Connection Points
- Conceptual Path (not actual route)
- Wind Farm (MW)



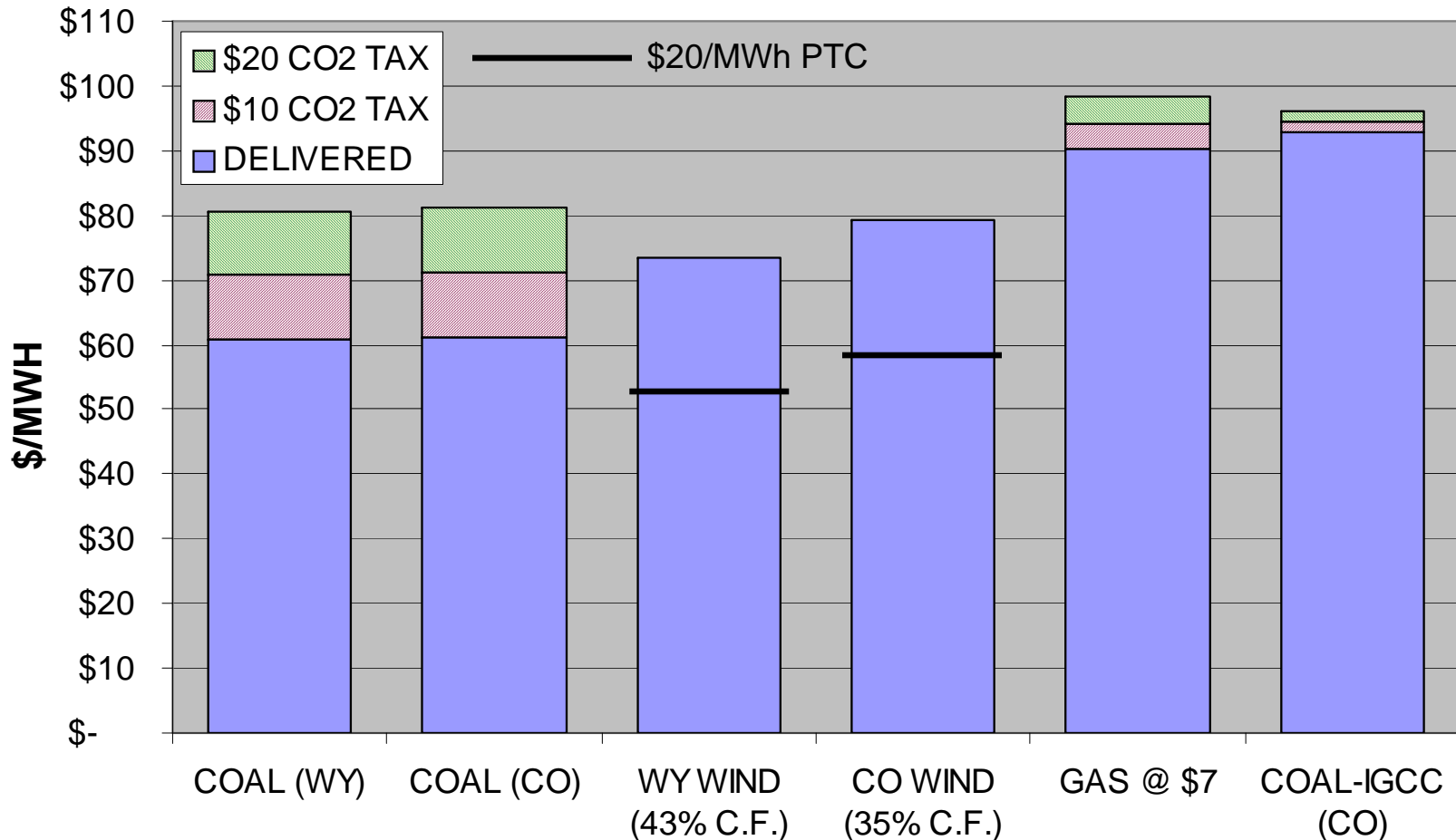
Geographic Diversity



- **Wyoming wind complements Colorado wind**
- **Reduced wind integration costs**
- **Reduced need for “firming”**
- **Increased value during peak demand**

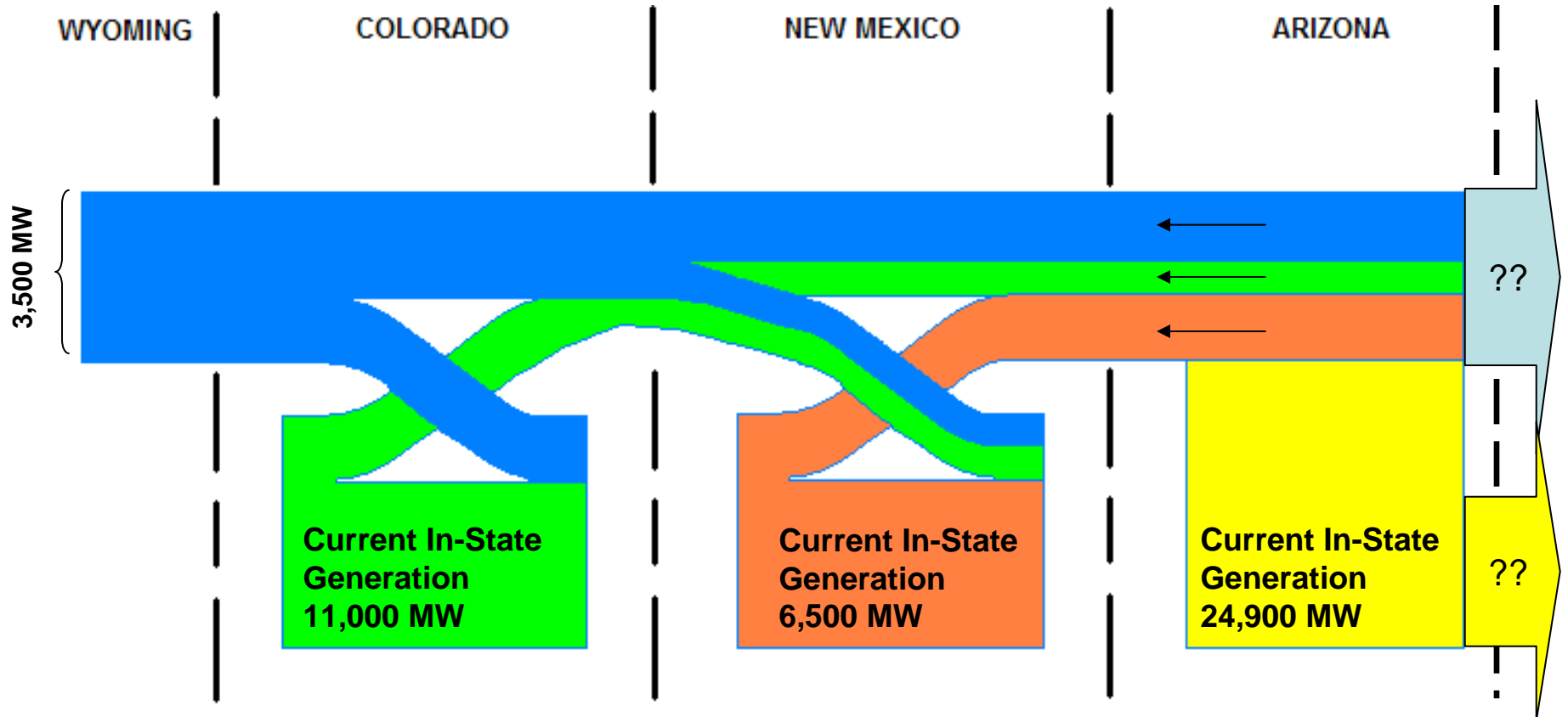
Source: NREL wind performance projections

Delivered Power Costs to Colorado Front Range

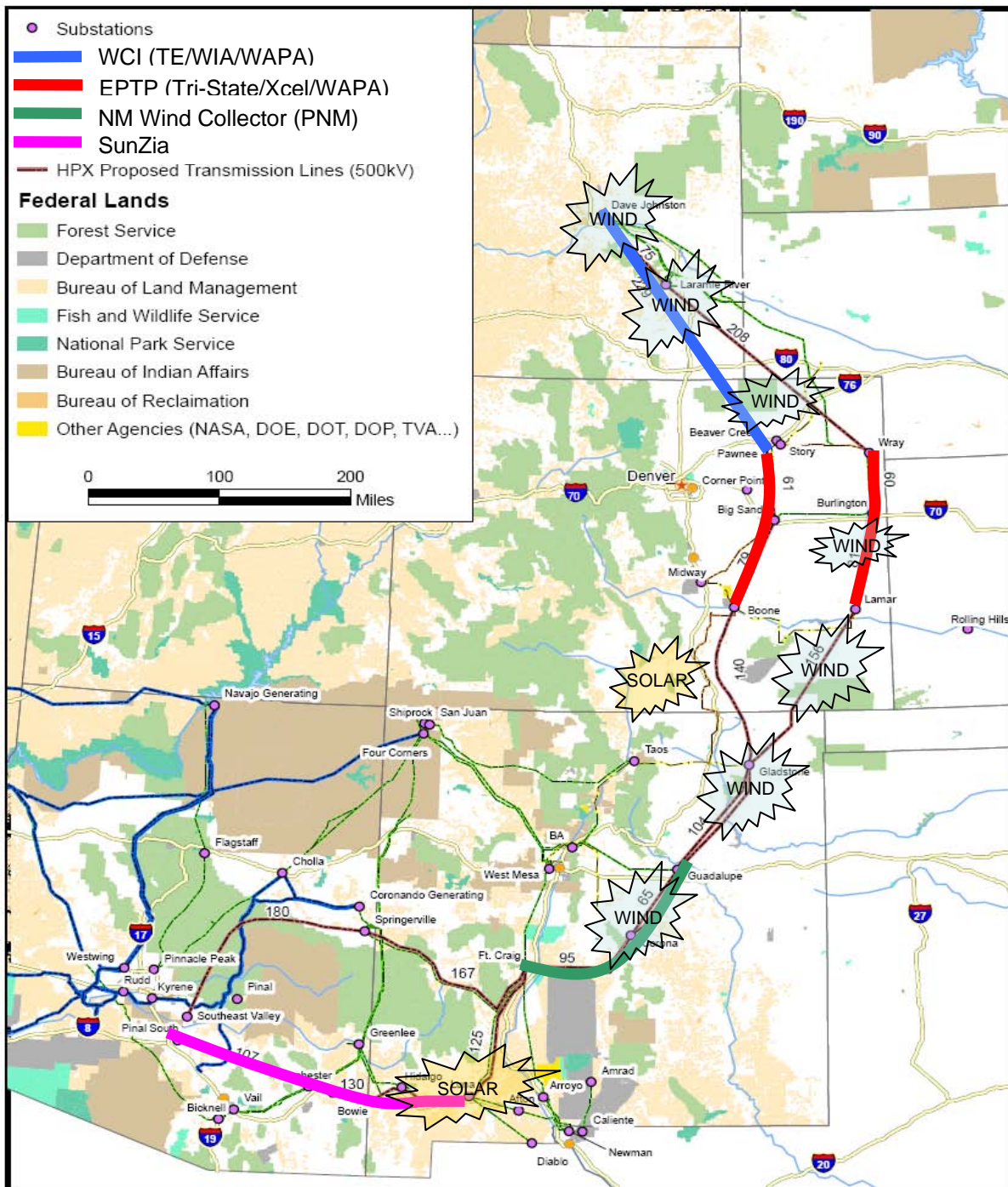


The HPX Concept

- Economic benefits for each state and power consumers
- Enables renewables: wind and solar
- Strengthens the regional grid via improved interconnections



High Plains Express



- Links 4 Projects Under Development
- 3,500 MW
- Two 500 kV Lines
- Phase I Complete
- Starting Phase II
- Renewable Enabler
 - Regional Market
- Participants
 - 7 Utilities
 - Xcel, Tri-State, WAPA, CSU, PRPA, PNM & SRP
 - 3 State Authorities
 - CO, NM & WY
 - Trans-Elect

Kudos for SB-91 Task Force Report

