

High Plains Express Initiative

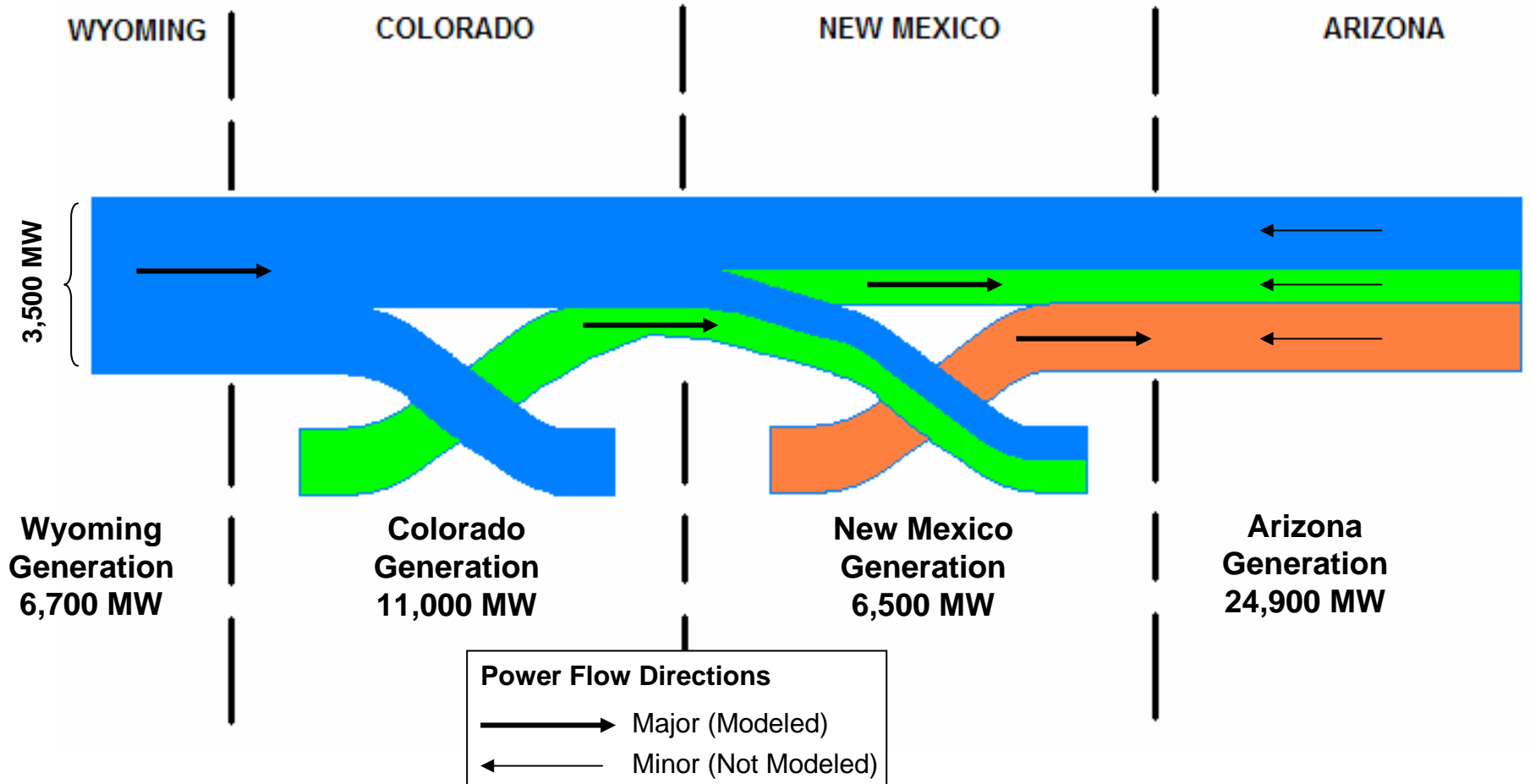
*Jerry Vaninetti, Vice President
Trans-Elect Development Company, LLC*

*Gerry Stellern, Manager of Transmission Reliability Assessment
Public Service of Colorado (Xcel Energy)*

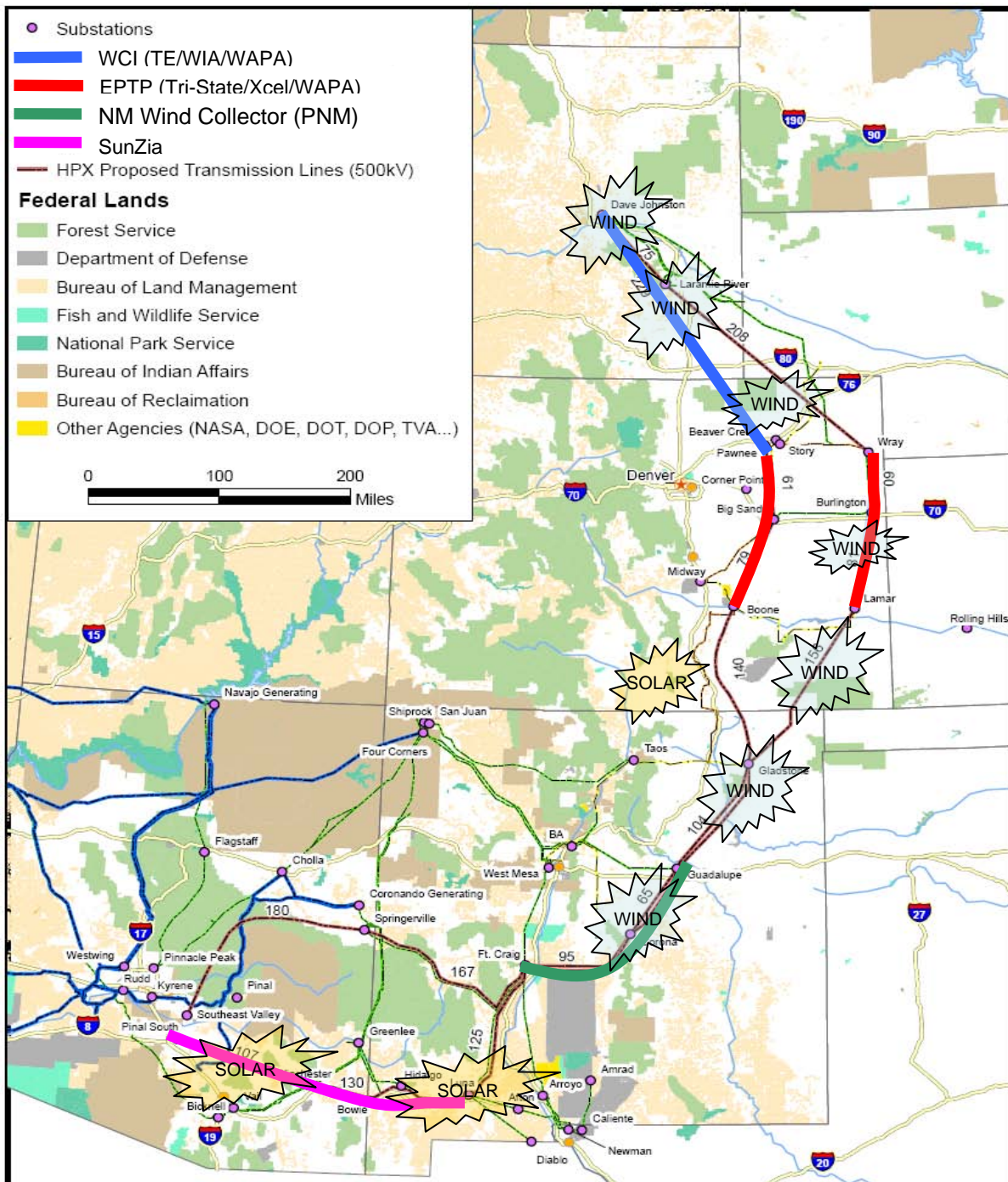
**Colorado Clean Energy Development Authority (CEDA)
Board Meeting – April 23, 2009
Denver, Colorado**

The HPX Concept

Integrating imports/exports into existing loads and resources



High Plains Express Initiative



- Roadmap for Regional Transmission Expansion
 - 4 Component Projects
- Description
 - 3,500 MW Capacity
 - Two 500 kV Lines (AC)
 - ~\$5 Billion
- Phase I Complete
 - Moving to Phase II
- Benefits
 - Accesses renewables
 - Reliability
 - Consumer savings
 - Transmission Roadmap
- Participants
 - 6 Utilities
 - Xcel, Tri-State, WAPA, ColoSp, PNM & SRP
 - 3 State Authorities
 - CO, NM & WY
 - Trans-Elect

• http://www.rmao.com/wtpp/HPX_Studies.html

HPX Initiative Status

- Initial feasibility report nearing completion
- Identification of primary benefits
 - Enhances the reliability of the electric transmission system
 - Advances transmission development consistent with public policy
 - Achieves economic benefits for HPX customers and consumers
 - Provides economic development stimuli for the states of Wyoming, Colorado, New Mexico and Arizona
 - Provides a “master plan” or “roadmap” for regional transmission expansion
- Moving towards next phase of development
 - Enabling agreements & charter
 - Finalization of participants & responsibilities
 - Management structure
 - Scope and budget for studies & activities managed by 4 sub-committees:
 - Technical, commercial, routing & outreach
 - Open stakeholder process
 - Role of component projects: EPTP, WCI, NM wind collector & SunZia