

Tri-State G&T



Eastern Plains Transmission Project

November 1, 2007

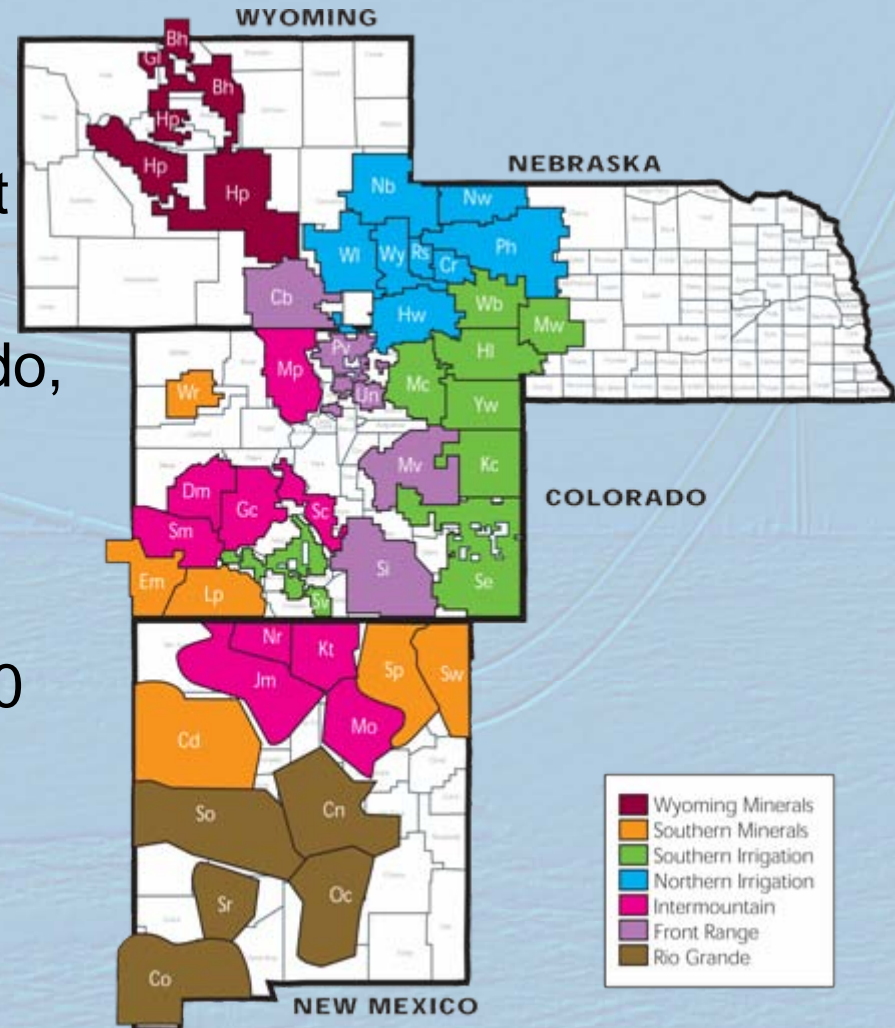
Joel Bladow, Sr. Vice President



Tri-State introduction



- ❑ Consumer owned, not-for-profit wholesale electricity supplier
- ❑ 44 member-systems in Colorado, Wyoming, New Mexico and Nebraska
- ❑ Member-systems serve 1.4 million people across a 250,000 mile service territory
- ❑ 2007 member peak demand of 2,542 MW

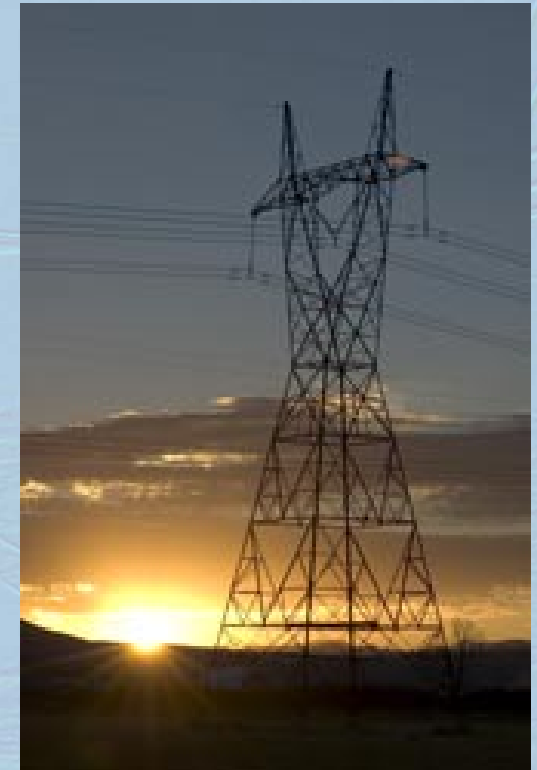


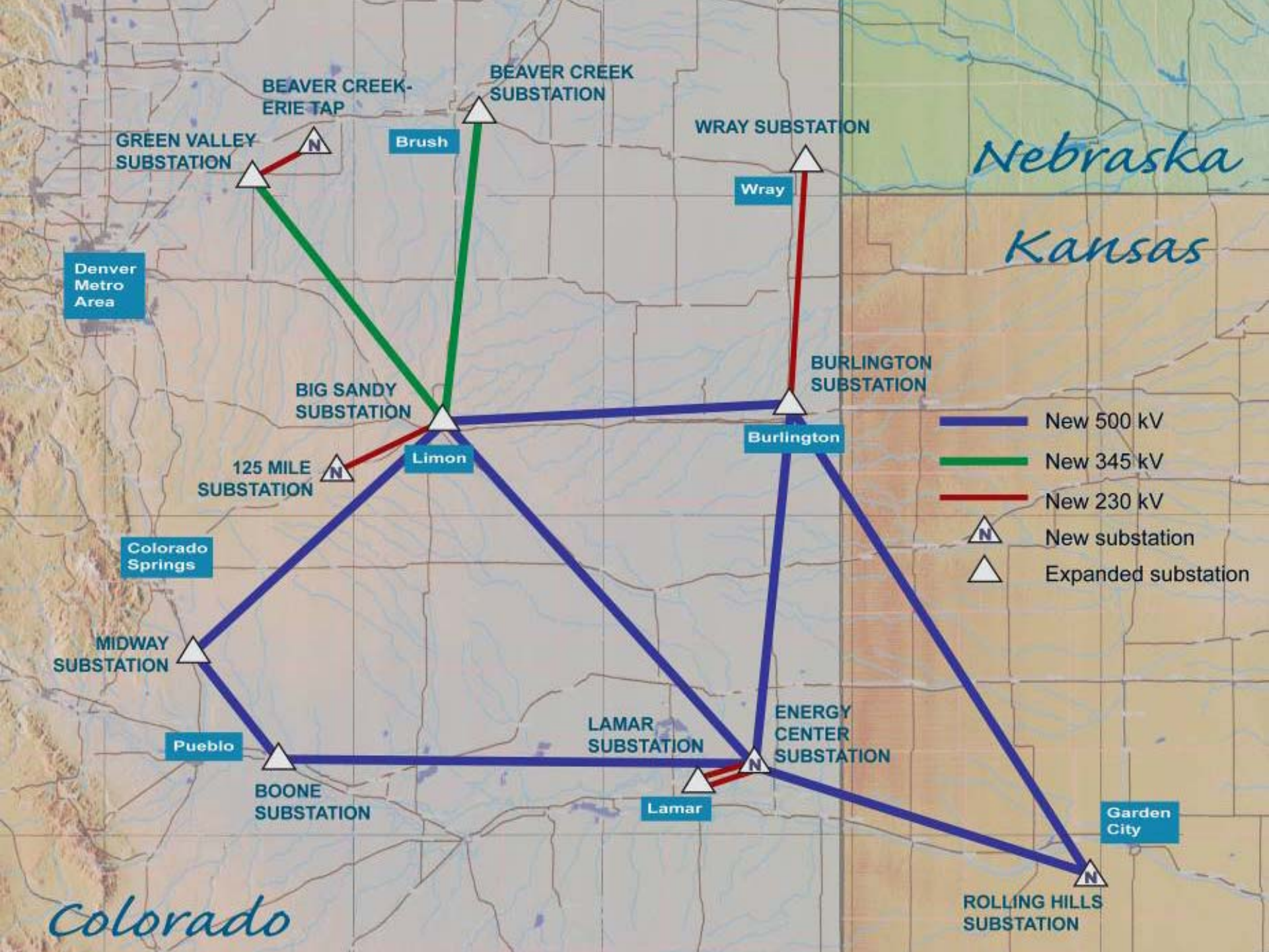


Eastern Plains Transmission Project



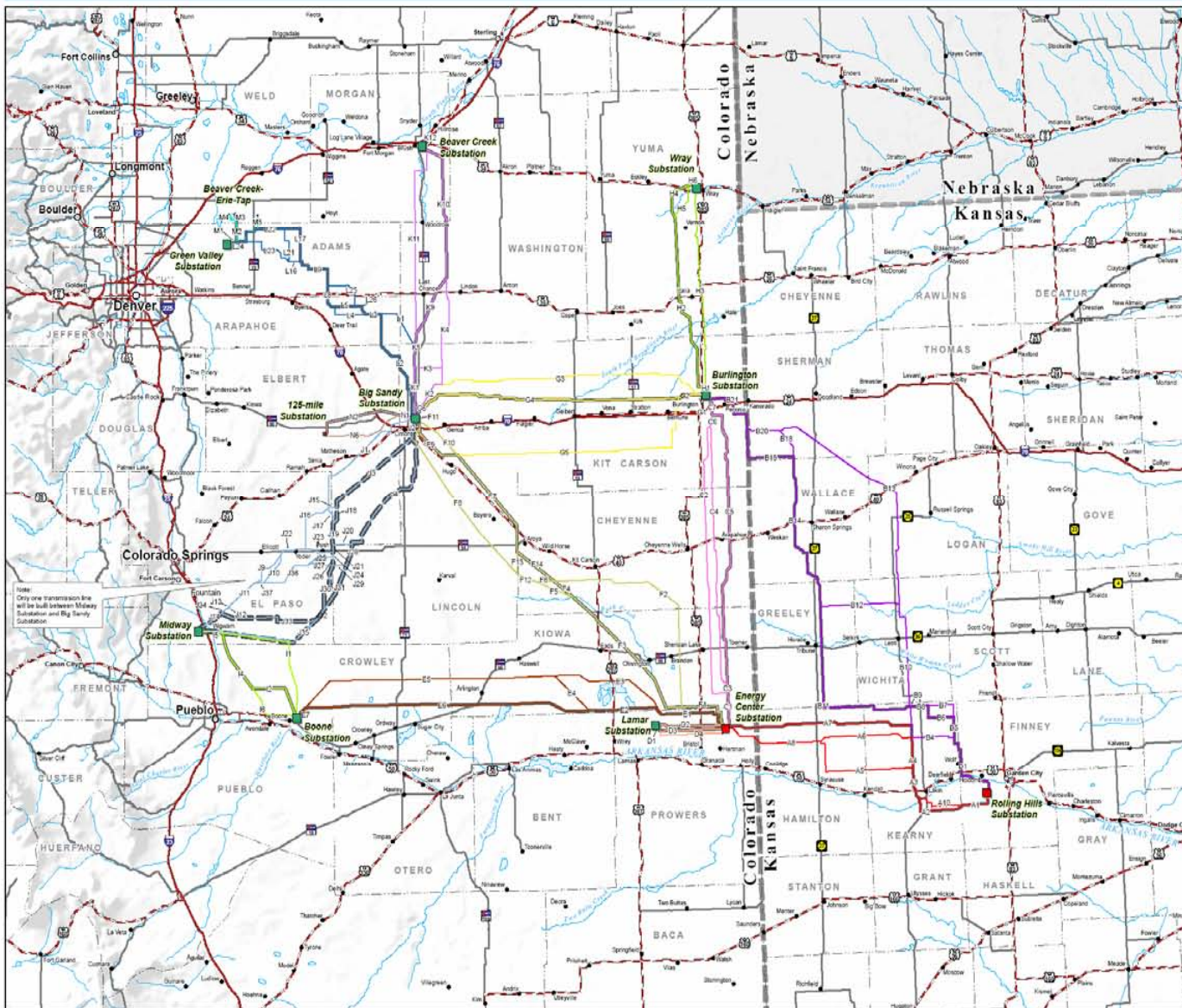
- ❑ Proposed joint construction project
 - Tri-State Generation and Transmission Association, Inc.
 - Western Area Power Administration
- ❑ 1,000-mile high-voltage transmission system in eastern Colorado and western Kansas
- ❑ EPTP would:
 - Serve Tri-State's member co-ops
 - Serve Western's hydropower customers
 - Enhance electrical system reliability
 - Relieve existing transmission constraints
 - Provide opportunities for interconnections







EPTP Route Selection Options



Proposed and Alternative Routes

EPTP Analysis Area

- Legend**
- Substations**
- Existing Substation
 - Proposed Substation
 - Siting Area
- Routes**
- 230-kV

- Proposed Alternative
- Burlington to Wray
 - Energy Center to Lamar
 - Big Sandy to 125-mile
 - Green Valley - Beaver Creek-Erie Tap

- 345-kV
- Proposed Alternative
 - Big Sandy to Beaver Creek
 - Big Sandy to Green Valley

- 500-kV
- Proposed Alternative
- Boone to Midway
 - Burlington to Big Sandy
 - Energy Center to Big Sandy
 - Energy Center to Boone
 - Energy Center to Burlington
 - Rolling Hills to Burlington
 - Rolling Hills to Energy Center

- Primary Alternative
- Midway to Big Sandy
- Note: there is currently no proposed route from Midway to Big Sandy.

Source Data:
 ESRI (Cities and Shaded Relief), BTS (Highways), National Atlas (States, Water Features), KGSV CDOT (Counties)

1:750,000 When printed at 22 x 34 Inches

0 5 10 20 Miles



Last Revised: 05/16/07

MXD Path: P:\2006\06180035.01\GIS\Layouts\BaseMaps\070502_750k_BaseMap_Proposed

PDF Path: P:\2006\06180035.01\GIS\Maps\BaseMaps\070502_750k_BaseMap_Proposed



Eastern Plains Transmission Project





EPTP supports Colorado renewables development

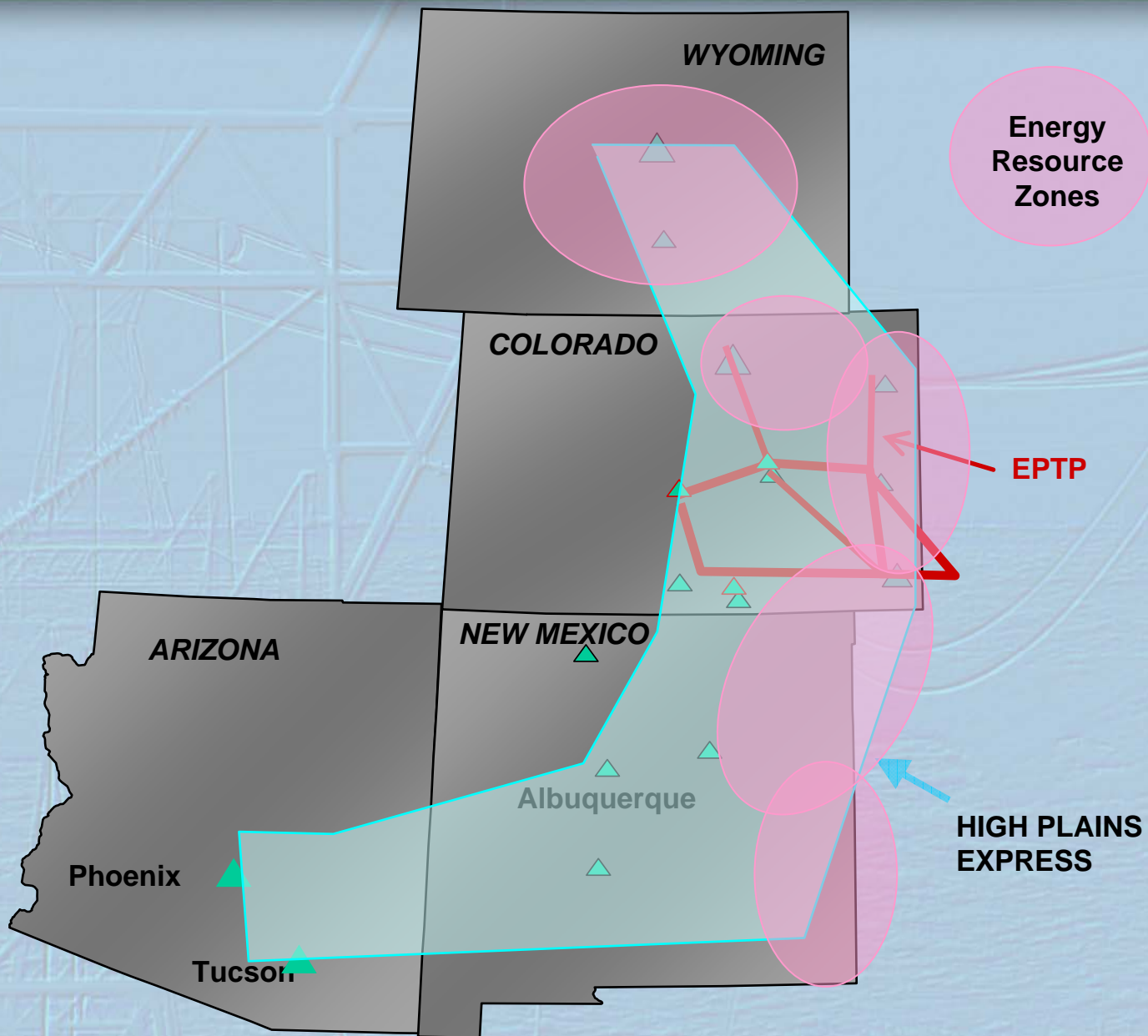


- ❑ EPTP will alleviate transmission constraints that limit wind power development
- ❑ Developers representing 1,000 MW of new wind projects in eastern and southern Colorado have begun interconnection discussions
- ❑ Tri-State treats all interconnection requests equally and consistent with Tri-State's Large Generator Interconnection Procedures





High Plains Express Transmission Project





TRI-STATE

Generation and Transmission
Association, Inc.

A Touchstone Energy® Cooperative

