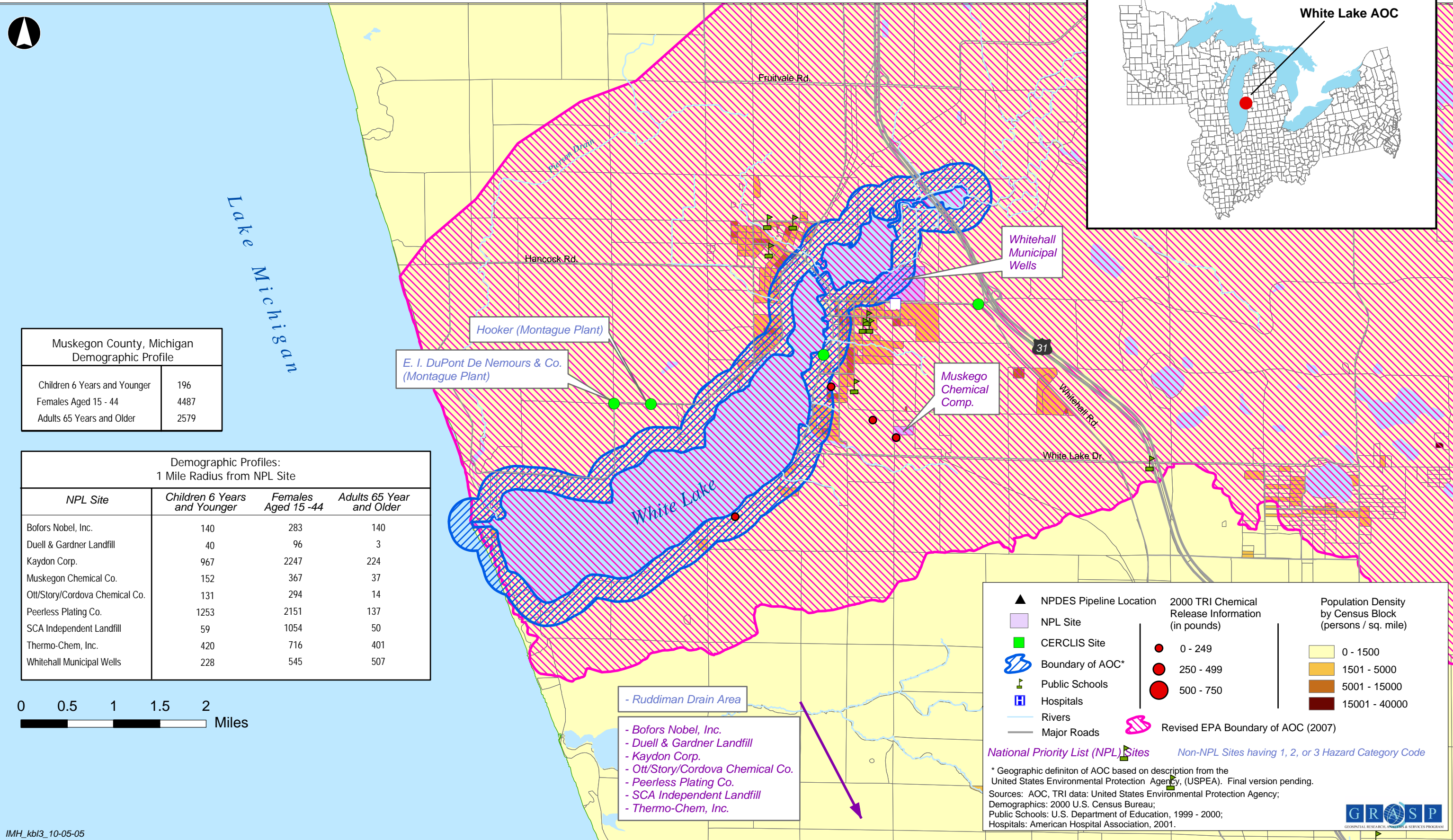
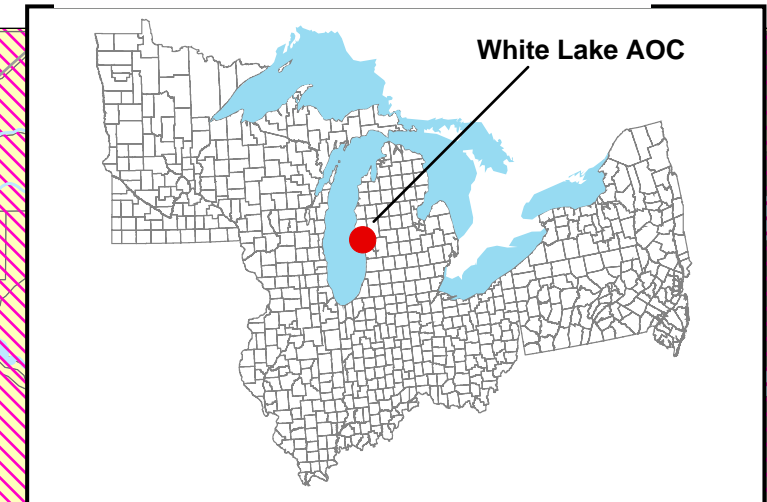


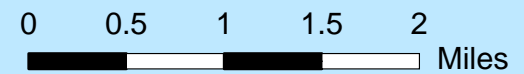
White Lake Area of Concern Muskegon County, Michigan

Great Lakes Areas of Concern



Muskegon County, Michigan Demographic Profile	
Children 6 Years and Younger	196
Females Aged 15 - 44	4487
Adults 65 Years and Older	2579

Demographic Profiles: 1 Mile Radius from NPL Site			
NPL Site	Children 6 Years and Younger	Females Aged 15 - 44	Adults 65 Year and Older
Bofors Nobel, Inc.	140	283	140
Duell & Gardner Landfill	40	96	3
Kaydon Corp.	967	2247	224
Muskegon Chemical Co.	152	367	37
Ott/Story/Cordova Chemical Co.	131	294	14
Peerless Plating Co.	1253	2151	137
SCA Independent Landfill	59	1054	50
Thermo-Chem, Inc.	420	716	401
Whitehall Municipal Wells	228	545	507



- Ruddiman Drain Area
- Bofors Nobel, Inc.
 - Duell & Gardner Landfill
 - Kaydon Corp.
 - Ott/Story/Cordova Chemical Co.
 - Peerless Plating Co.
 - SCA Independent Landfill
 - Thermo-Chem, Inc.

▲ NPDES Pipeline Location	2000 TRI Chemical Release Information (in pounds)	Population Density by Census Block (persons / sq. mile)
■ NPL Site	● 0 - 249	■ 0 - 1500
■ CERCLIS Site	● 250 - 499	■ 1501 - 5000
⊕ Boundary of AOC*	● 500 - 750	■ 5001 - 15000
⊕ Public Schools		■ 15001 - 40000
⊕ Hospitals		
— Rivers		
— Major Roads		
	⊕ Revised EPA Boundary of AOC (2007)	

National Priority List (NPL) Sites **Non-NPL Sites having 1, 2, or 3 Hazard Category Code**

* Geographic definition of AOC based on description from the United States Environmental Protection Agency, (USEPA). Final version pending.
Sources: AOC, TRI data: United States Environmental Protection Agency;
Demographics: 2000 U.S. Census Bureau;
Public Schools: U.S. Department of Education, 1999 - 2000;
Hospitals: American Hospital Association, 2001.

