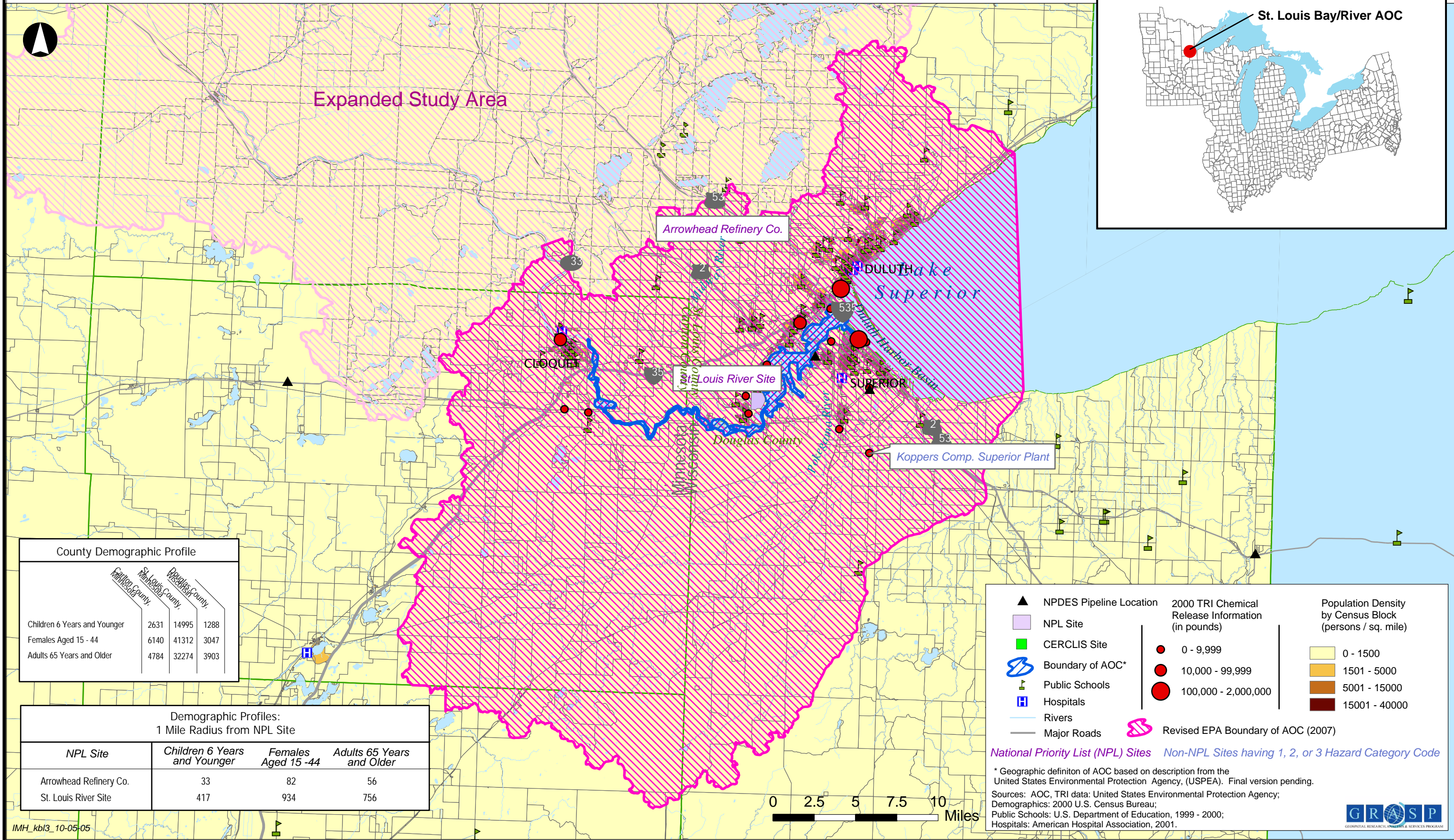
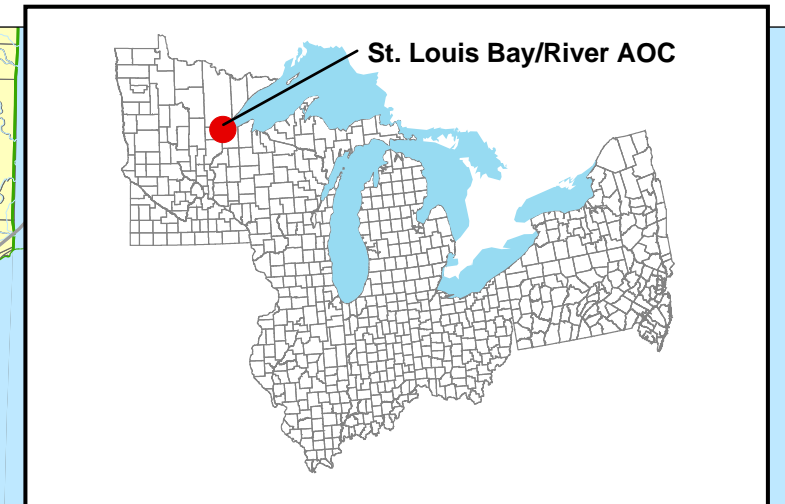


# St. Louis Bay/River Area of Concern St. Louis & Carlton Counties, Minnesota and Douglas County, Wisconsin

## Great Lakes Areas of Concern



County Demographic Profile			
	St. Louis County	Carlton County	Douglas County
Children 6 Years and Younger	2631	14995	1288
Females Aged 15 - 44	6140	41312	3047
Adults 65 Years and Older	4784	32274	3903

Demographic Profiles: 1 Mile Radius from NPL Site			
NPL Site	Children 6 Years and Younger	Females Aged 15 - 44	Adults 65 Years and Older
Arrowhead Refinery Co.	33	82	56
St. Louis River Site	417	934	756

▲ NPDES Pipeline Location  
 ■ NPL Site  
 ■ CERCLIS Site  
 Boundary of AOC\*  
 Public Schools  
 Hospitals  
 Rivers  
 Major Roads

2000 TRI Chemical Release Information (in pounds)  
 ● 0 - 9,999  
 ● 10,000 - 99,999  
 ● 100,000 - 2,000,000

Population Density by Census Block (persons / sq. mile)  
 0 - 1500  
 1501 - 5000  
 5001 - 15000  
 15001 - 40000

Revised EPA Boundary of AOC (2007)

National Priority List (NPL) Sites Non-NPL Sites having 1, 2, or 3 Hazard Category Code

\* Geographic definition of AOC based on description from the United States Environmental Protection Agency, (USPEA). Final version pending.  
 Sources: AOC, TRI data: United States Environmental Protection Agency; Demographics: 2000 U.S. Census Bureau; Public Schools: U.S. Department of Education, 1999 - 2000; Hospitals: American Hospital Association, 2001.