



CARD A Pain Relievers


1



Darvocet-N[®]




Darvon[®]




Tylenol[®] with Codeine


2



Percocet[®]




Percodan[®]




Tylox[®]


3



Vicodin[®]




Lortab[®]



Lorcet[®]/Lorcet Plus[®]

4



Codeine

9



Hydrocodone

14



Propoxyphene

5



Demerol[®]

10



Methadone

15



SK-65[®]

6



Dilaudid[®]

11



Morphine

16

Stadol[®]

7



Fioricet[®]

12



OxyContin[®]

17




Talacen[®]

8



Fiorinal[®]

13



Phenaphen[®] with Codeine

18



Talwin[®]

19



Talwin[®] NX

20

Tramadol

21




Ultram[®]

CARD B

Tranquilizers

1



Klonopin®

Clonazepam

2



Xanax®

Alprazolam




Ativan®




Lorazepam

3



Valium®



Diazepam

4



Atarax®

8



Librium®

13



Serax®

5



BuSpar®

9



Limbital®

14



Soma®

6



Equanil®

10



Meprobamate

15



Tranxene®

7



Flexeril®

11



Miltown®

16



Vistaril®

12



Rohypnol®

CARD C Stimulants

1

(picture not available)
Methamphetamine
("speed" or "ice" or
"crank")



Desoxyn®

(picture not available)
Methedrine

2

Amphetamines



Benzedrine®



Biphentamine®



Fastin®



Phentermine



3



Ritalin®



Methylphenidate



4



Cylert®

8



Eskatrol®

12



Plegine®

5



Dexedrine®

9



Ionamin®

13



Preludin®

6 **Dextroamphetamine**

10



Mazanor®

14



Sanorex®

7

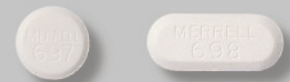


Didrex®

11

Obedrin-LA®

15



Tenuate®

CARD D Sedatives

1

(picture not available)
Methaqualone
(includes Sopor®,
Quaalude®)

2



Nembutal® Sodium

(picture not available)
Pentobarbital



Seconal®

(picture not available)
Secobarbital

(picture not available)
Butalbital

3



Restoril®



Temazepam

4



Amytal®

7



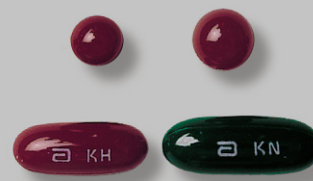
Dalmane®

8



Halcion®

10



Placidyl®

5



Butisol®

6

Chloral Hydrate

9



Phenobarbital

11



Tuinal®