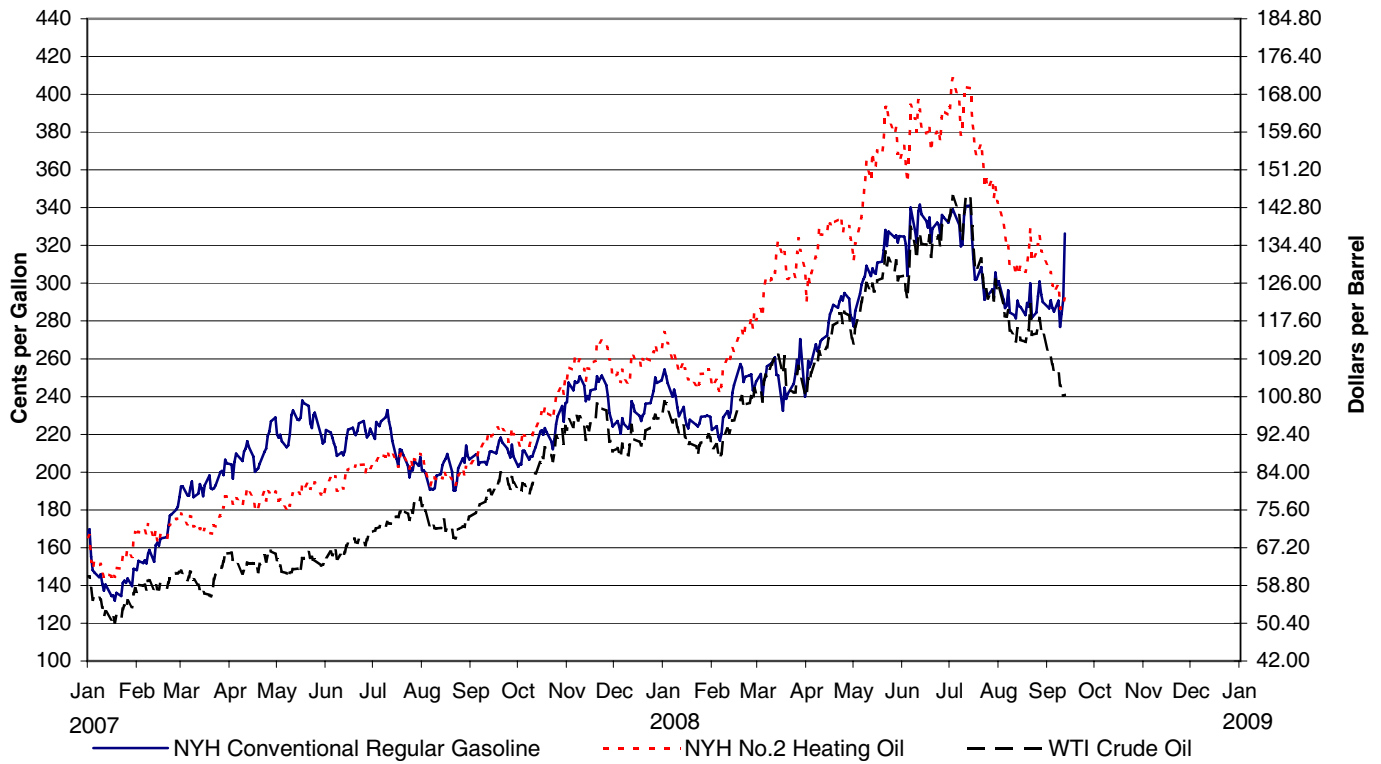
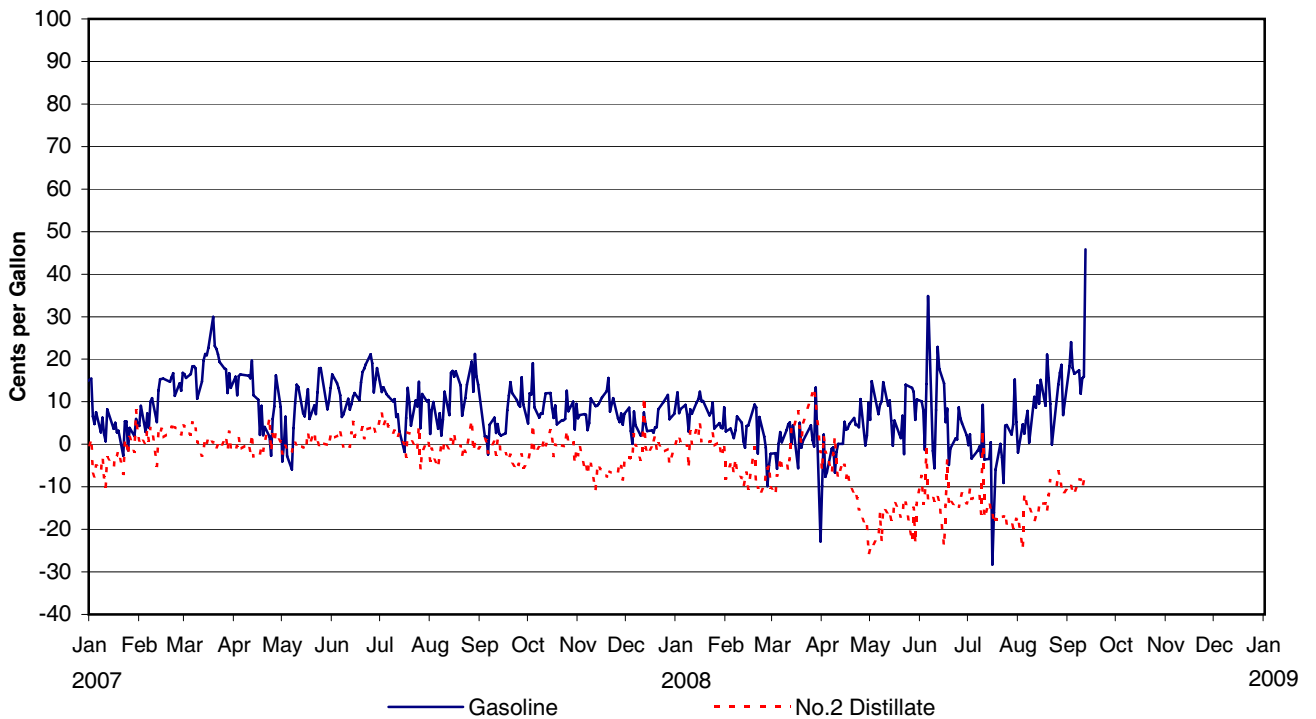


**Figure 11. Daily Crude Oil and Petroleum Product Spot Prices, January 2007 to Present**



Note: See Glossary for definitions of abbreviations.  
 Source: See page 33.

**Figure 12. Daily Trans-Atlantic Spot Product Price Differentials: New York Harbor less Rotterdam (ARA), January 2007 to Present**



Notes: See Glossary for definitions of abbreviations. See Appendix A, Technical Note 1, page 40, for more information about the data in this graph.  
 As of April 30, 2008, Rotterdam (ARA), a 50 ppm sulfur gasoline, is no longer available and has been replaced with ARA 10 ppm sulfur gasoline starting with 2007.  
 Source: See page 33.