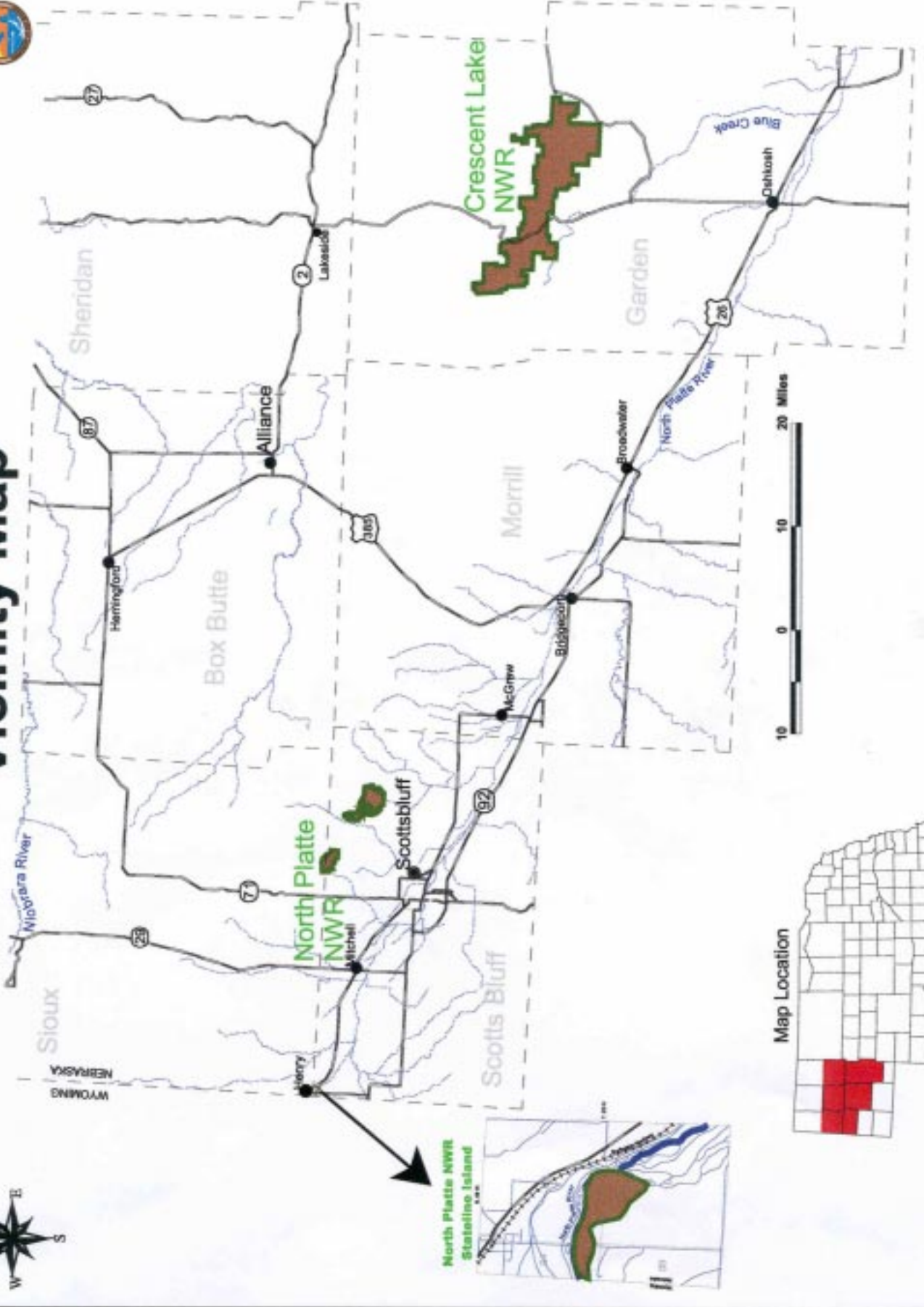




# Vicinity Map



State of Nebraska

**DRAFT**

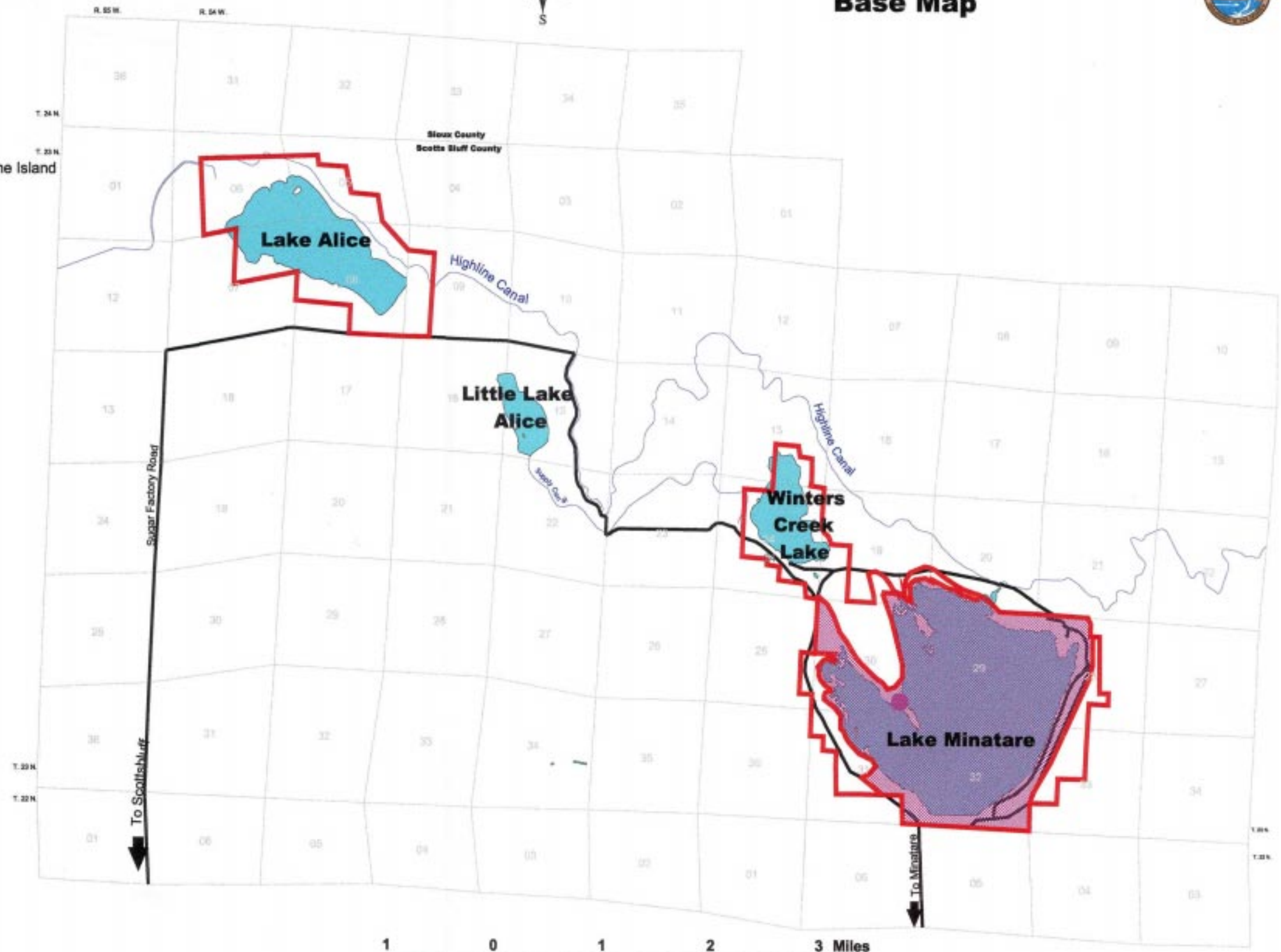
Map # 1 Vicinity Map

# North Platte National Wildlife Refuge Base Map



← 20 miles to Stateline Island

- LEGEND**
- Roads
  - Canals
  - Open Water
  - North Platte NWR Boundary
  - State Recreation Area
  - Nebraska Game & Parks Headquarters



*DRAFT*

Map # 2 Base Map

# North Platte National Wildlife Refuge Vegetation Map



## LEGEND

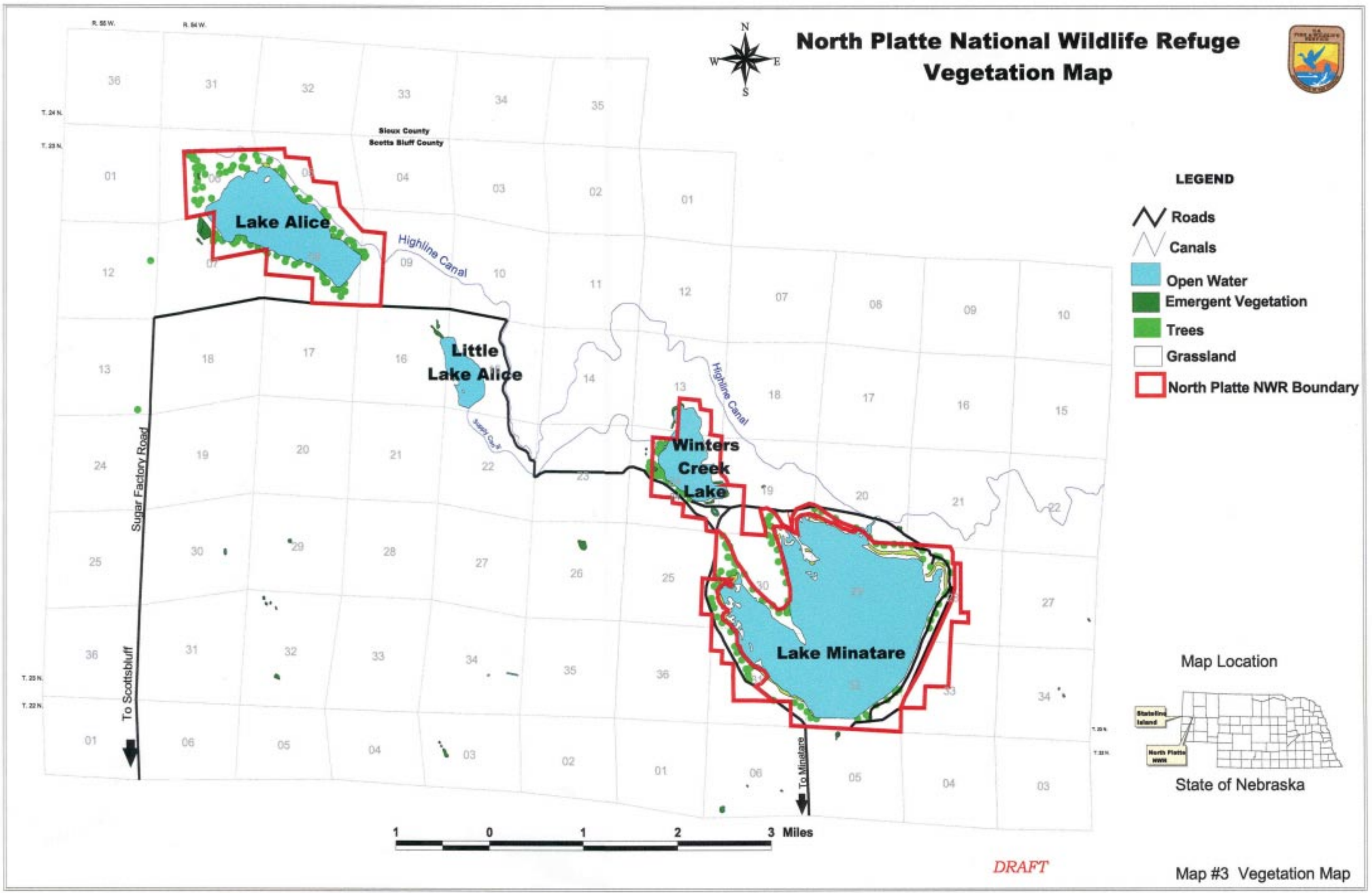
- Roads
- Canals
- Open Water
- Emergent Vegetation
- Trees
- Grassland
- North Platte NWR Boundary

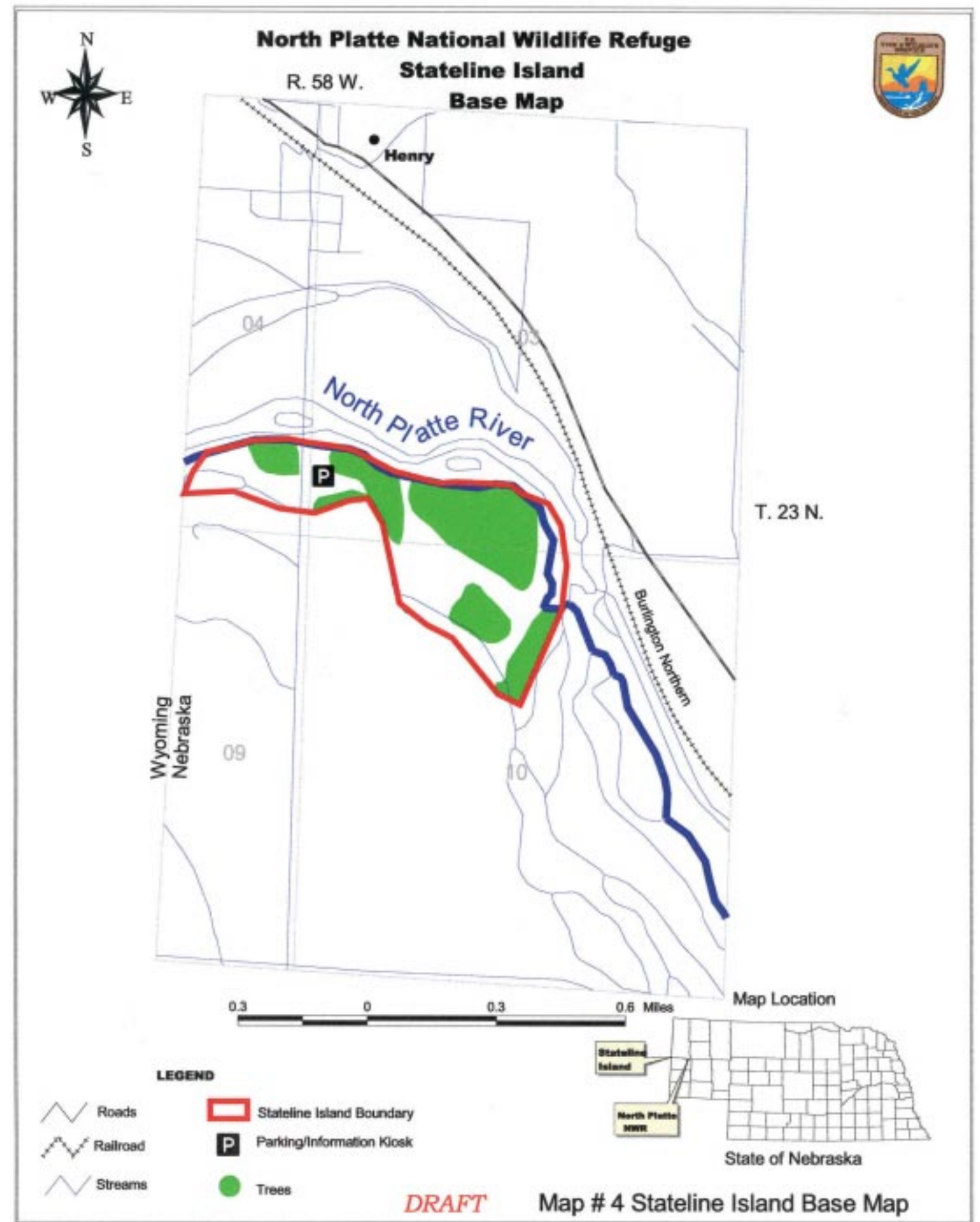
## Map Location



*DRAFT*

Map #3 Vegetation Map





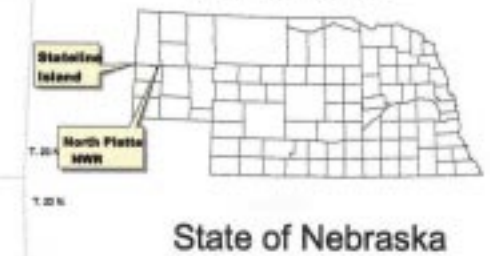
# North Platte National Wildlife Refuge Public Use Map



## LEGEND

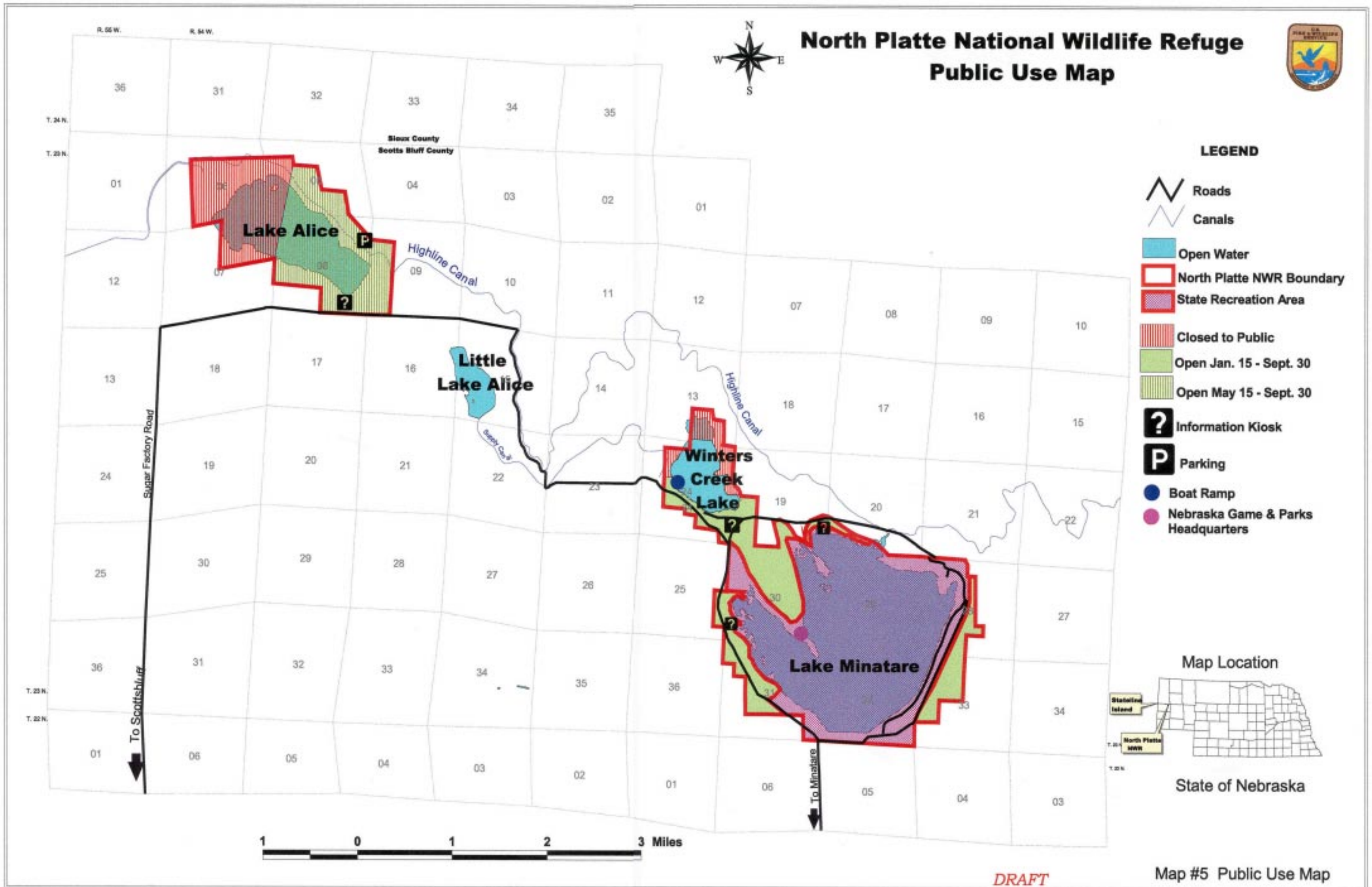
- Roads
- Canals
- Open Water
- North Platte NWR Boundary
- State Recreation Area
- Closed to Public
- Open Jan. 15 - Sept. 30
- Open May 15 - Sept. 30
- Information Kiosk
- Parking
- Boat Ramp
- Nebraska Game & Parks Headquarters

## Map Location



*DRAFT*

Map #5 Public Use Map

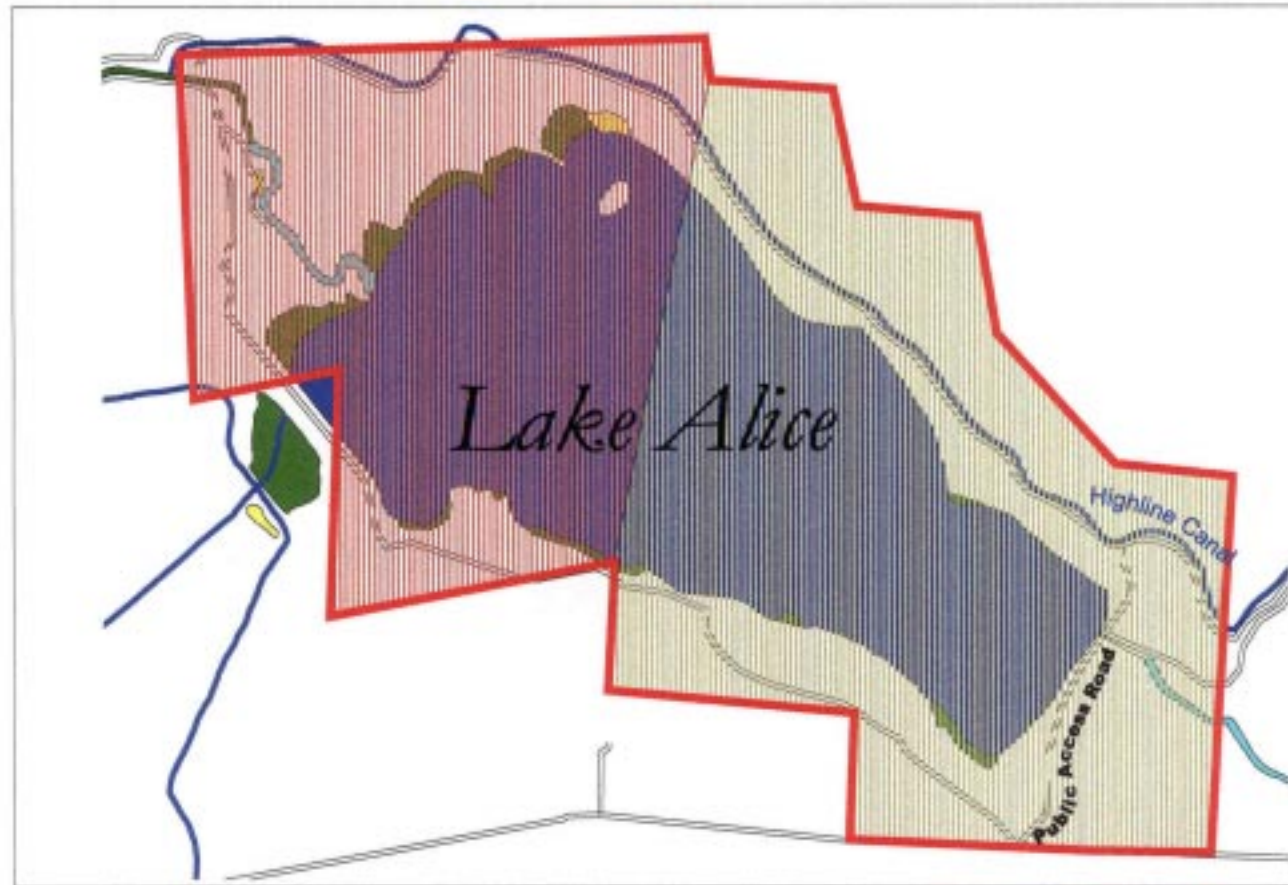


# North Platte National Wildlife Refuge Lake Alice Unit

Scottsbluff County, Nebraska

**Existing**

**Proposed**



**Legend**

Lake Alice Unit Boundary	Lake
<b>Existing Public Use</b>	River
Closed to Public Year Round	Seasonally Flooded
Open May 15 - Sept. 30	Semipermanently Flooded
<b>Proposed Public Use</b>	Temporarily Flooded
Open Jan. 15 to Oct. 14	Upland
Proposed Overlook	Streams



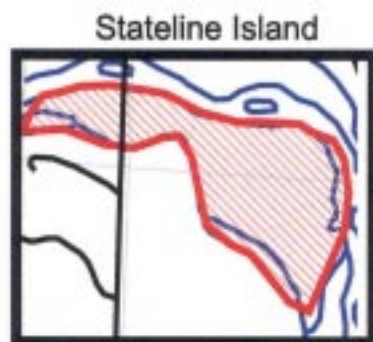
**DRAFT**

Map # 6 Lake Alice Existing and Proposed Public Use Map

# North Platte National Wildlife Refuge

Scottsbluff County, Nebraska

*DRAFT*

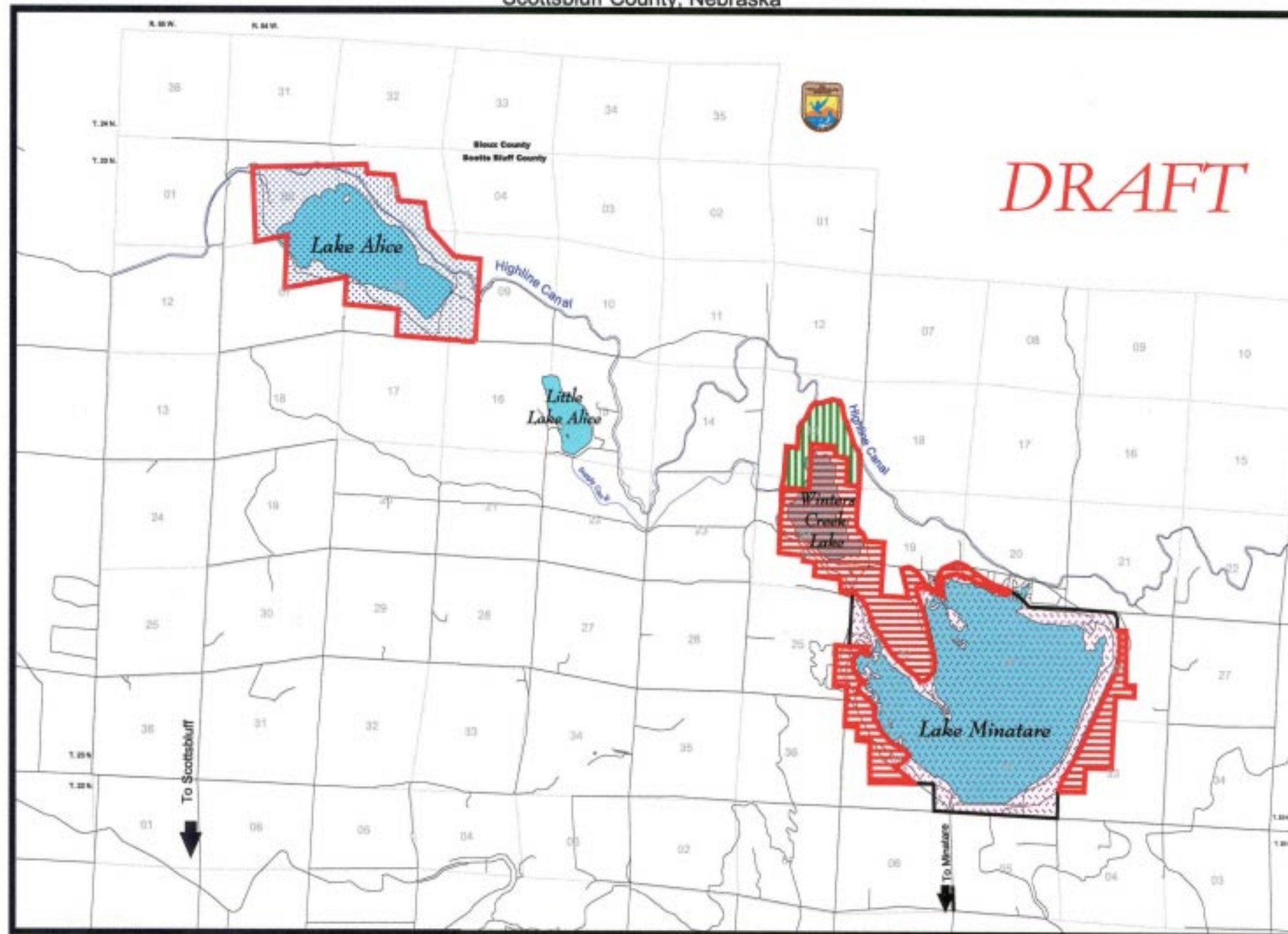


20 Miles to  
Stateline Island

**Legend**

Refuge Units

- Lake Alice
- Lake Minatare
- Winters Creek
- State Recreation Area
- Stateline Island
- Open Water



Map # 7 Refuge Unit Map

