



**BOYS & GIRLS CLUBS**  
**HAWAII ALLIANCE**

**WHO WE ARE:** The Hawaii Alliance of Boys & Girls Clubs is a collaboration of Boys & Girls Club organizations in the State of Hawaii. Participating members include Boys & Girls Clubs of Maui, Boys & Girls Clubs of the Big Island, and 3 Military-based Boys & Girls Clubs on Oahu: Army, Air Force, and Marines. These Clubs have come together to enhance our capacity to enable all Hawaii keiki, especially those who need us most, to reach their full potential as productive, caring, and responsible citizens.

**WHAT WE DO:** Boys & Girls Clubs operate dedicated youth development facilities for school-aged keiki. Our centers are open every day after school, on school holidays, and during the summertime. Our Clubs offer Hawaii's keiki a positive alternative, during the hours when they might otherwise be unsupervised at home or on the streets, with trained, caring professional staff and some of the best evidenced-based programs in the nation. Boys & Girls Clubs aim to help every child develop the character, skills, and self-confidence to make the most of their lives. Boys & Girls Clubs offer programs in education and career development, character and leadership, life skills, arts & culture, and fitness, sports, and recreation.

**GRANTS IN AID REQUEST:** The Hawaii Alliance of Boys & Girls Clubs requests a Grant In Aid for \$340,000.00 to support a collaborative pilot outreach effort by its member organizations, designed to recruit and serve approximately 510 new keiki ages 10 through 17 years in Boys & Girls Club programs during after school hours. This is our first GIA request.

BGC Maui's Goal: 200 more keiki

BGC Big Island's Goal: 160 more keiki

Military-Based BGCs Goals: 50 more keiki each from neighboring communities off-base

*It breaks down to \$667/ keiki for a lifetime of difference.*

Goals: The proposed programs are designed to prevent, reduce, or eliminate antisocial behaviors among adolescents by increasing their protective factors and decreasing related risk factors. This "One-Stop Shop" concept collection of Boys & Girls Club activities will focus on middle and high school aged youths and emphasize early interventions. Research clearly indicates youth are highly vulnerable to the initiation of a range of antisocial behaviors and of alcohol and drug use at this age range. This outreach initiative provides a package of evidenced-based programs that develop and increase important protective factors while decreasing risk factors related to these programs areas. "One Stop Shop" components include Boys & Girls Club's Nationally acclaimed research-based drug and alcohol prevention program, "SMART Moves"; the fitness and nutrition program, "Triple Play"; Educational enhancements, "Power Hour" and "Project Learn"; Leadership Programs, Torch and Keystone Clubs; and Boys & Girls Clubs' general youth development strategy, the Drop In Program.

Outcomes: *The Hawaii Alliance will measure and report to the legislature on outcomes from this initiative in the key areas of impact: Prevention, Fitness/Nutrition, and School Performance.* We believe that this investment by the state will result in greater savings for Hawaii in reduced dropouts and incarceration and greater productivity as our keiki develop the competencies and character they need to succeed.

**COMMUNITIES WE WILL REACH:** Island of Maui, the Big Island, and communities around Fort Shafter Barracks, Schofield, Aliamanu Military Reservation, and Helemano Military Reservation (Leilelua, Moanalua, Radford, Aiea, and Mililani School Complexes); Hickam (Moanalua, Radford, Aiea, Pearl City, and Aliamanu School Complexes); and Kaneohe, Camp Smith, and Manana Housing (Pearl City, Castle, Kailua, and Kalaheo School Complexes).

Sustainability: Clubs in the Hawaii Alliance will work with private donors and state and local government to ensure that our outreach efforts are sustainable for years to come, and can expand into new communities to serve underserved keiki.

3/10/2008

To: Senator Rosalyn Baker, Chair, Senate Ways and Means Committee  
Representative Marcus Oshiro, Chair, House Committee on Finance

Subject: Up-date on Grant in Aid Request by Garden Island Resource, Conservation,  
and Development, Inc for funds to facilitate community acquisition of  
Coco Palms for a Hawaiian Cultural/Community Center

Since submitting the GIA request:

The steering committee for this project contacted OHA and Kamehameha Schools seeking their involvement as partners. OHA is well aware of the sight and its potential. Kamehameha's CEO toured the site with some of her staff (2/16/08). Both groups have expressed interest. More formal responses are pending.

The acquisition project remains a priority of the Kapaa/Wailua Community Development Plan update process.

SB 3221 requesting \$10 million towards acquisition of the site remains alive.

**FINGIA**

*west hawaii wildfire mgmt org.*

**From:** John Tarson [wvagn1@hawaii.rr.com]  
**Sent:** Friday, March 07, 2008 6:59 AM  
**To:** Rep. Marcus Oshiro; Sen. Roz Baker  
**Cc:** testimony; FINGIA  
**Subject:** Support for Hawaii Wildfire Management Organization

Please fund the Grant-in-Aid application submitted by the Hawaii Wildfire Management Organization, 501 (c)(3) nonprofit. Hawaii Wildfire Management Organization provides critical mitigation and planning services to the communities of Hawaii Island that protect communities and endangered natural resources.

They have been extremely helpful to the Waikoloa Village community in the time frame since the 25,000 acre wildfire of August 2005 that came to the edge of the village. They have provided planning and technical assistance which have resulted in both a grazing agreement for open lands surrounding the village and they have assisted with some grant funding to help start an abatement program which the Waikoloa Village Association has been aggressively funding for the past two years.

John Tarson  
General Manager  
Waikoloa Village Association

Brian M. Kakahara  
321 S. Lono Ave.  
Kahului, HI 96732

March 5, 2008

The Honorable Rosalyn H. Baker and Marcus R. Oshiro  
State of Hawaii, Joint Hearings – Senate Committee on Ways and Means and House Committee on Finance  
Twenty-Fifth Legislature  
State Capitol  
415 S. Beretania Street  
Honolulu, Hawaii 96813

E-mail: [testimony@capitol.hawaii.gov](mailto:testimony@capitol.hawaii.gov) or [FINGIA@Capitol.hawaii.gov](mailto:FINGIA@Capitol.hawaii.gov)

Subject: Imua Family Services Grant-in-Aid Application

Informational Meeting: Wednesday, March 12, 2008, 9:00 a.m. State Capital Auditorium

Dear Senator Baker, Representative Oshiro & Members of the Senate Committee on Ways and Means and House Committee on Finance:

On behalf of Imua Family Services and the thousands of families they have served over the past 60 years, I am submitting testimony in **strong support** of their grant-in-aid application for the Early Childhood Development Program. This application for \$200,000 for fiscal year 2008-2009 will ensure at least 100 children age 3 through 5 and their families will continue to receive support through this much needed program.

The Early Childhood Development Program (ECDP) provides continued therapeutic service to children age three through five who do not meet age appropriate developmental milestones and fall outside the scope of Department of Education (DOE) Special Education Preschool services. ECDP began in March 2007 as a three-year demonstration project with strong funding support from Hawaii based private foundations and community partners. During the first year Imua served 92 children and families providing support needed to be better prepared for preschool, kindergarten and beyond. As of March 1, 2008, 75 children are currently receiving services in the program with an additional 38 children in the enrollment process.

The overall outcome for ECDP is to provide developmental support for children age three through five in all facets of their life so that they are prepared for learning. Studies have determined that continued early intervention through age five provides children with valuable support during the crucial developmental years, giving them a greater chance of thriving in preschool and kindergarten, and leading a healthy productive life. **Your investment now in a young child's development will reduce the costs of social programs that be needed for this child as they grow up.**

Imua Family Services continues to seek and receive funding from private foundations and community partners. State support for this innovative and valuable program would reflect Hawaii's belief that investing in our keiki is money well spent. Thank you for the opportunity to present testimony in **strong support of Imua Family Services grant-in-aid application**. I can be reached at 873-2235 for any further questions.

Sincerely,



Brian M. Kakahara  
President of Imua Family Services

Grants-In-Aid Informational Briefing  
Wednesday, March 12, 2008  
State Capitol Auditorium  
9:00AM  
Neighbor Island Applicant

To: Senator Rosalyn H. Baker  
Chair, Senate Committee on Ways and Means

Representative Marcus R. Oshiro  
Chair, House Committee on Finance

From: Pauline Hess for Ku'ulei Bell, President, Ka 'Ohana O Kalaupapa

Re: Grants-in-Aid Informational Briefing

Thank you for the opportunity to provide additional information regarding our application. Listed below are updates to our application:

I. Background and Summary

3. State the public purpose and need to be served:

**Advocacy**

- **Patient pension increases:** In early 2008, the 'Ohana through the request of older Kalaupapa patients contacted state legislators to assist them with their pension increase. **Update:** On January 23, 2008, the bill SB3228, Pensions of Hansen's Disease Facilities Employees, was introduced in the Senate by Senator English, Senator Baker, and Senator Tsutsui. The bill adjusts pension amounts for retired patient employees of Hansen's disease facilities; provides for annual increase to be paid to deceased retired patient employees' estates. The 'Ohana, patients and their family members testified in favor of SB3228. The bill was transmitted to the House on March 4, 2008, and is scheduled to be heard by HLT on Wednesday, 03-12-08 at 8:00am in the House conference room 329.
- **Air ambulance service:** When the Department of Health first learned that the 'Ohana was concerned about the lack of air ambulance services for end-of-life issues, an official welcomed the involvement of the 'Ohana, once again showing that collaboration can lead to solutions. **Update:** Through hard work and creative thinking a solution was found that will allow Air Med to fly Kalaupapa patients home for their final days. The community and members of Ka 'Ohana O Kalaupapa would like

to thank Senator Roz Baker, Representative Mele Carroll, Air Med and Sandy Apter; Dr. Linda Rosen; the State Department of Health; Scotty Schaefer and Speedy Bailey.

### **Preservation**

- **Kalaupapa Monument: Update:** The Kalaupapa Memorial Act, H. R. 3332, introduced by Congresswoman Mazie Hirono and co-sponsored by Congressman Neil Abercrombie, passed in the U.S. House of Representatives on February 12, 2008. A companion bill S.2502, introduced by Senator Daniel Akaka and co-sponsored by Senator Daniel Inouye is expected to reach the floor of the Senate early this year. There have been editorials in the Star Bulletin, Honolulu Advertiser, Maui News and the New York Times. All of them in favor of the memorial and the bill.

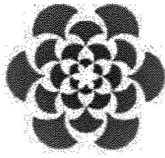
The 'Ohana applied for the Grant-In-Aid in year 2006 and our application was approved by the state legislators. The funds were not released by the administration.

I plan to attend the briefing on Wednesday, March 12, 2008 as a representative from the 'Ohana. Due to health reasons it is possible to schedule me so that I may be there at a specific time. I understand the volume of applications is a challenge and to schedule a time for a representative may be difficult. I am in a care home and have to be transported by a care giver so I must schedule accordingly. If you want to contact me, please call my care giver Gladys at 733-8080 and ask for me, (Hale Mohalu at Leahi) or please call our vice president, Pauline Hess at 778-2059. If I am too ill to attend, our vice president, Pauline Hess will attend in my place.

Thank you again for allowing me to provide you with additional information and I look forward to the informational briefing on Wednesday.

Respectfully submitted,

Elizabeth Ku'ulei Bell



## KAUAI PLANNING & ACTION ALLIANCE

March 10, 2008

Senator Rosalyn H. Baker  
Chair, Senate Committee on Ways and Means  
Representative Marcus H. Oshiro  
Chair, House Committee on Finance  
Hawaii State Capitol  
415 South Beretania Street  
Honolulu, HI 96813

Dear Senator Baker and Representative Oshiro,

I regret I am unable to attend the important March 12 Grants-in-Aid Information Briefing due to other prior commitments. However, I appreciate the opportunity to present additional testimony to augment our GIA proposal submitted related to the "Expansion of community-based before and after school programs for Kaua'i youth ages 5-18."

The need for this program was confirmed through a survey of Kaua'i before and after school programs in November 2007. Since that time, as I continue to meet with groups working on various community issues, the shortage of these programs is raised frequently as a key concern. While there are programs in place, there is a need to serve more youth and to expand the hours services are available.

I have been working with drug prevention groups in each of the three school complexes on Kaua'i. They are so concerned about this issue that they have included as a goal in the island-wide drug plan that is finalized to "Ensure that after-school, intersession, weekend, and summer activities that encourage a drug-free life are offered to youth."

The Collaborative for Academic, Social, and Emotional Learning issued a report in 2007 that states:

Evidence is mounting that where and how youth spend their time outside of normal school hours has important implications for their development. On the negative side, estimates suggest that more than 7 million children in the United States are without adult supervision for some period of time after school. This

BRINGING PEOPLE TOGETHER TO CREATE A BETTER FUTURE FOR KAUAI

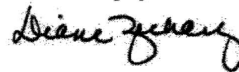
2959 Umi Street, Suite 201, Lihu'e, HI 96766 Phone 808.632.2005 Fax 808.632.2018

Email [kpa@kauainetwork.org](mailto:kpa@kauainetwork.org) [www.kauainetwork.org](http://www.kauainetwork.org)

unsupervised time puts youth at risk for such negative outcomes as academic and behavioral problems, drug use and other types of risky behavior (Weisman & Gottfredson, 2001). On the positive side, young people benefit when they spend time engaged in structured pursuits that offer opportunities for positive interactions with adults and peers, encourage them to contribute and take initiative, and contain challenging and engaging tasks that help them develop and apply new skills and personal talents (American Youth Policy Forum, 2006; Carnegie Corporation, 1992; Larson & Verma, 1999; National Research Council & Institute of Medicine, 2002).

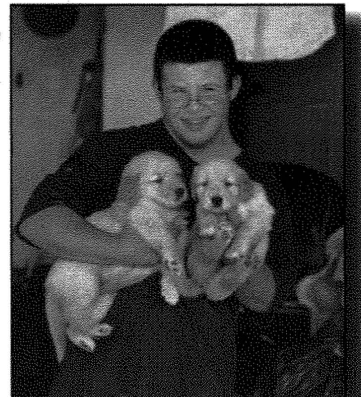
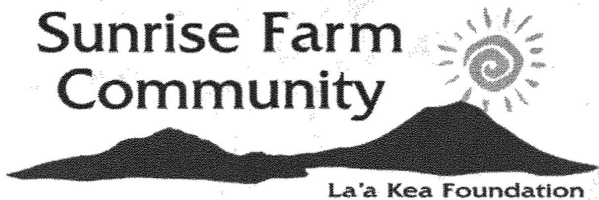
The funding from the proposed grant-in-aid would help support well-designed programs offering a variety of out-of-school activities to engage, stimulate, motivate and ensure the safety of our young people while promoting healthy behaviors. We ask for your support of this \$200,000 request.

Sincerely yours,



Diane Zachary  
President & CEO





**The Mission:**

To provide a residential farm community where adults with developmental disabilities are a part of a thriving ohana.

*"Our housing projects are in constant demand and very rarely do we experience vacancies. The Sunrise Farm Community residential program will serve a housing need in our community that is not currently being served."*  
**Jo-Ann Ridao, Maui County Housing Commissioner**

**The Need:**

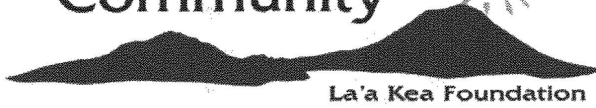
- The autistic and developmentally disabled/mentally retarded (DD/MR) population of Maui County is greater than 400 adults.
- Less than 6% of the autistic & DD/MR adults have any opportunity for long-term care in a residential program.
- Approximately 25 special needs high school students are graduating each year in Maui County. (Hawaii State DOE)
- Currently there are in total, four group homes serving 19 adults on Maui.
- There are zero rural/community programs.



*"The high cost of housing coupled with their limited resources continues to be a barrier for them to live independently in the community."*  
**Mary Matsukawa, Program Specialist for the State Planning Council on Developmental Disabilities**

<p>From <b>Priced Out 2006</b>  <a href="http://www.tacinc.org/Pubs/Pricedout.htm">www.tacinc.org/Pubs/Pricedout.htm</a></p> <p><b>Ten Worst-Case Local Housing Market Areas For Disabled Adults</b></p> <p>(Percent of SSI Needed to Rent a One-Bedroom Housing Unit)</p>	1. Columbia (MD)	183.2%
	2. Washington (DC/MD/VA)	188.1%
	3. Boston MSA-NH only	184.8%
	4. Nantucket County (MA)	175.8%
	5. Honolulu (HI)	175.5%
	6. Maui County (HI)	175.1%
	7. Westchester County (NY)	173.9%
	8. Middlesex-Somerset-Hunterdon (NJ)	166.4%
	9. Nassau-Suffolk (NY)	166.5%
	10. Stamford-Norwalk (CT)	165.2%

# Sunrise Farm Community



La'a Kea Foundation

The Sunrise Farm Community intends to provide housing and/or vocation for at least 25% of the autistic, DD/MR adult population of Maui County. This will provide affordable housing and long-term care for some of the lowest-income citizens in Hawaii.

The Sunrise Farm Community will work with businesses and residents in the Paia and neighboring communities to insure integration of its residents and participants within the community. Likewise, discussions have already begun with business people and neighbors at Skill Village to develop opportunities for them to be a part of the ongoing activities of the Sunrise Farm Community.

## **Priced Out in 2006 Major Findings**

- People with disabilities who receive SSI benefits have the "worst case" housing needs and are most in need of community support.
- People with disabilities continue to be the poorest people in the nation.
- In 2006 the percentage of SSI benefits needed to rent a one-bedroom housing unit in Maui County was 175%.

*"When residential settings are not found on Maui, individuals must move to Oahu. It is the belief of Easter Seals Hawaii that individuals are best served in their community, in settings that provide typical life experiences in which to learn and grow."*

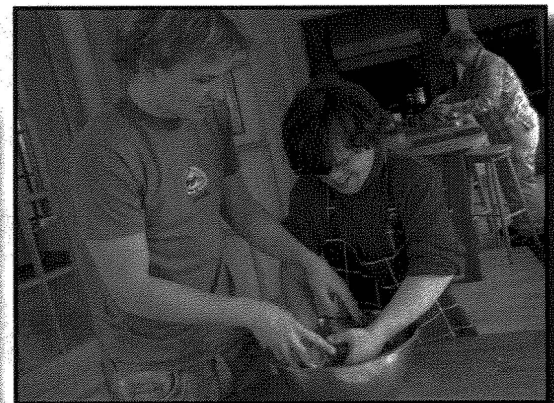
**Kim Davis, Case Coordinator of Easter Seals Hawaii**

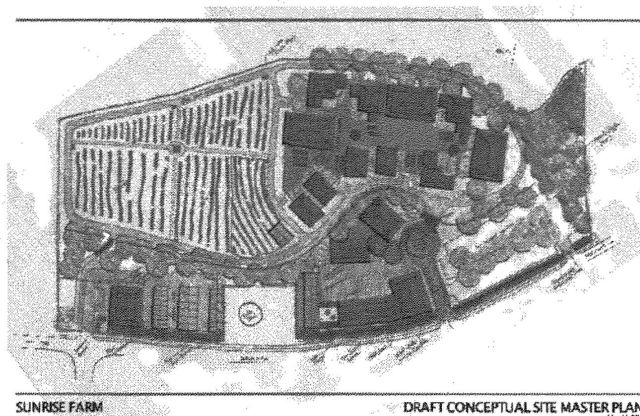


La'a Kea will make opportunities for autistic and DD/MR adults to have a safe place where they can live, work, and be close to their families.

Not only is Sunrise Farm Community good for the residents; it is good for Hawaii.

- There will be many jobs created, as well as volunteer and student learning opportunities.
- Meaningful business and social exchange with the larger community.
- A thriving, sustainable community that relies on itself, rather than only government funding.





SUNRISE FARM

DRAFT CONCEPTUAL SITE MASTER PLAN  
MAY 14, 2004

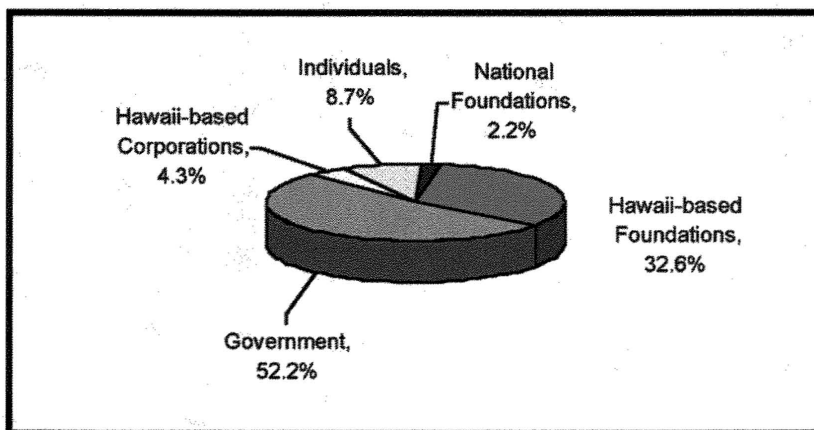
### **Sustainable:**

In addition to ongoing fundraising and client fees, Sunrise Farm will contract with the State of Hawaii, Department of Health to be a provider of mental retardation and developmental disabilities (MR/DD) home and community based Medicaid waiver services (also known as Title XIX waiver program). Sunrise Farm Community will also incorporate entrepreneurial aspects including a farmer's market, a self-service storage facility and a police sub-station.

### **More Than Just an Idea:**

In 2005 the County of Maui approved a 55-year renewable lease of 12 acres of land to the La'a Kea Foundation for \$1 per year. Since then much has been accomplished. Below are highlights of the past 12 months:

- The Hawaii Community Foundation awarded La'a Kea \$40,000 for capacity building which led to hiring a professional capital campaign consulting firm.
- \$448,000 in capital improvement funds approved by the State of Hawaii (Grant-in-Aid) for construction planning.
- Completed feasibility study for capital campaign.
- Developed fundraising strategy and recruited campaign committee.
- Met with multiple private foundations all of which responded positively to the project and encouraged La'a Kea to submit grant requests.
- Hired Betsill Brothers to provide project management and obtain necessary approvals prior to construction.



**Funding Sources**

---

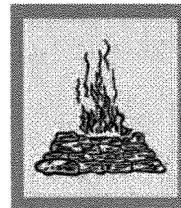
## LĀNA'I CULTURE & HERITAGE CENTER

*E Ho'ohanohano 'ana i ka wā mamua, a e Ho'olako 'ana i ka mua aku!*  
**(Honoring the Past, and Enriching the Future!)**

A Non-Profit Charitable, Museum, Research and Educational Organization

P.O. Box 631500 · Lāna'i City, Hawai'i 96763 (808) 565-7177 · info@LanaiCHC.org · www.LanaiCHC.org

---



Keahiakawelo-  
ka lama o Lāna'i

March 12, 2008

**To:** *The Honorable Members of the Senate and House of Representatives  
of the State of Hawai'i*

**From:** *Kepā Maly, Executive Director*

**Subject:** *Grants in Aid Application of the Lāna'i Culture & Heritage Center*

**Directors and Officers:**  
*Martha Evans  
Pamela Alconcel  
Gary Yokoyama*

**Executive Director:**  
*Kepā Maly*

On behalf of the people of Lāna'i, I humbly ask your support of the initiatives of the Lāna'i Culture & Heritage Center (LCHC), a Section 501(c)(3) non-profit organization. The LCHC programs are focused on several key facets of Lāna'i's heritage, including: the material culture of the people of Lāna'i, spanning the traditional Hawaiian period through the plantation era; protection of natural resources; documenting the traditions and historical events of Lāna'i; and ensuring that this legacy is passed on through interpretive/educational programs to all who live on, visit, or are interested in Hawaiian history. We are working on a wide range of community programs, covering both the cultural and natural resources of Lāna'i, with the goal being to foster awareness, appreciation, and stewardship of these resources.

The LCHC has become an important part of the community on Lāna'i, and is working to ensure that our unique island legacy is protected and passed on to future generations. With so many changes occurring on Lāna'i, we are on the verge of losing many irreplaceable facets of our history and material culture. The programs of the LCHC are needed to help us retain our identity as a unique Hawaiian Island, and plantation community. Support of these programs is extremely important, and relative to legislative initiatives being undertaken around the state in this field. Importantly, there is no other program in existence in the state which is working to protect and pass Lāna'i's rich heritage on to present and future generations. Your support of the LCHC programs will help to fill a void in Hawai'i's history, and address an under represented facet of Hawai'i's heritage.

Since opening our doors on October 1, 2007, we have had more than 2,000 participants in the LCHC programs. Community support has been significant. Families have been donating artifacts and historical records, and volunteered to help manage LCHC activities. We have also received more than \$70,000.00 in donations to the program since Oct. 1<sup>st</sup>, 2007. In addition to the community support, Castle & Cooke Resorts, LLC, has committed \$50,000.00 a year and donations in interim facilities, and support in development of the new LCHC facilities which are to be built along the square surrounding Dole Park. Also of significance, the Trustees of the Office of Hawaiian Affairs have already suggested that they would consider a \$1-million matching grant to the LCHC capital improvements program for this effort.

Our application to you covers fiscal year 2008-2009, in the amount of \$100,000.00; and 2009-2010 in the amount of \$500,000.00. Please look favorably upon this request on behalf of the Lāna'i Culture & Heritage Center, and help us secure the funds to set in place the management components and facility necessary to honor the past and enrich the future of Hawai'i nei. If your time permits, I would be happy to assist you in visiting some of the outstanding resources that make Lāna'i unique in all Hawai'i. Please do not hesitate to contact me should you have any questions, or if I may be of help.

Me ke aloha,

Kepā Maly  
Executive Director

---

*"Hanohano Lāna'i i ke kauna'oa, kohu kapa 'ahu'ula kau po'ohiwi!"*  
**(Lāna'i is distinguished by the kauna'oa, which rests upon its shoulders like a feather cloak!)**

PU'UOHOKU RANCH LTD

March 11, 2008

To: Senate Ways & Means Committee  
Attn: Senator Rosalyn Baker

Dear Honorable Senator Baker

I am writing in support off the request for Grant in aid for the Molokai Livestock Coop. We are at a crucial point in the development of the Molokai Livestock Coop that supports the local ranchers on Molokai and supplies a local food product to the Molokai community. I say crucial as we are now making the tough decisions that are necessary for any business to prosper on Molokai. Its been a tough go up to this point as I have been involved with the planning, construction and running of the coop since 1994. I am currently president of the board and am assisting Kammy Purdy and the other board members in developing a sound and practical business plan that is attainable. We are making many changes and making the hard decisions that are necessary to improve out financial status. Every one is making sacrifices to do this. I also manage Pu'uoHoku Ranch and am one of the few producers on Molokai that produces finished grass fed cattle for the coop to market locally.

We are getting closer to being cash positive but are still a ways off. The grant in aid would help use deal with training, staffing, utility costs, value added products, quality control and expanding our markets on Molokai to their fullest potential. These improvements would then lead to a more stable marketing option for Molokai ranchers, which add financial stability to their operations.

Thank you for your time and attention on this matter and I hope you support the request for the grant in aid for the Coop and your support to create a stable and local food source will be appreciated by all.

Sincerely,

Jack H Spruance  
Pu'uohoku Ranch Manager and president of the  
board for MLC



We build strong kids,  
strong families,  
strong communities.

## Testimony for Maui Family YMCA GIA Informational Briefing

### Board of Directors

*Doyle Betsill*  
Chairman

*David Gleason*  
Immediate Past Chair

*Martin Quill*  
Vice Chair

*Karen A. Saka*  
Secretary

*Robert E. Madow*  
Interim Treasurer

*Susan Bendon*  
*Dave Deleon*  
*Keoki Freeland*  
*John B. Guard III*  
*Dan Goodfellow*  
*Diane Haynes Woodburn*  
*Elizabeth A. Ivey*  
*John (Jac) Kean*  
*Gary R. Kenar*  
*Stephen T. Leis*  
*Paul Mancini Esq.*  
*Vicki Merriman*  
*Tony Takitani*

*Michael Morris*  
Chief Executive Officer

Fellowship and fun in a safe, nurturing place should be available to every child. Unfortunately, the simple days of 10 or 20 years ago are no longer, and parents must worry about so many more evils which can bring harm to their children. Parents across-the-board continually seek safe places for their children, and engaging activities, especially during those after school hours when they are working. We find ourselves competing for the hearts and minds of our children. But, it is a fight we cannot afford to lose. A vibrant YMCA on Maui is a powerful and positive magnet to support, mentor and befriend our children.

Not only does the Maui Family YMCA provide safe and fun programs for children regardless of their ability to pay but the YMCA provides programs for the whole family including our kupuna.

For the past five years the Kahului facility has been busting at the seams and in order to best carryout our mission, we must grow; therefore, we have embarked on this three-year capital campaign to renovate and expand the Maui Family YMCA. These improvements will help us increase our collaborative efforts with Ka Hale A Ke Ola and Special Olympics, increase our capacity to serve families and provide a dedicated space for seniors and teens.

### Facts and Figures

- ❖ Serves over 12,000 program participants each year.
- ❖ 2007 Summer Youth Programs Served over 300 children per week in Kahului, Camp Moana and in Kihei's Camp Nalu.
- ❖ Over 1,700 children in 6 elementary schools participate in a fitness program through a 3 year federal grant that the Maui Family YMCA received in 2005.

Maui Family YMCA • 250 Kanaloa Avenue • Kahului, HI 96732

Phone: (808) 242-9007 • Fax: (808) 244-6713 • [www.mauiymca.org](http://www.mauiymca.org) • Member Agency Maui United Way

**YMCA mission:** To enhance the quality of life for individuals, families and our community through programs that foster moral growth and build healthy spirit, mind and body for all.



We build strong kids,  
strong families,  
strong communities.

*Board of Directors*

*Doyle Betsill  
Chairman*

*David Gleason  
Immediate Past Chair*

*Martin Quill  
Vice Chair*

*Karen A. Saka  
Secretary*

*Robert E. Madow  
Interim Treasurer*

*Susan Bendon  
Dave Deleon  
Keoki Freeland  
John B. Guard III  
Dan Goodfellow  
Diane Haynes Woodburn  
Elizabeth A. Ivey  
John (Jac) Kean  
Gary R. Kenar  
Stephen T. Leis  
Paul Mancini Esq.  
Vicki Merriman  
Tony Takitani*

*Michael Morris  
Chief Executive Officer*

- ❖ The YMCA provides after school programs at Kamalii Elementary in Kihei.
- ❖ Pukalani Center offers water aerobics and swimming lessons
- ❖ Camp Keanae offers child care for children when school is not in session.
- ❖ Camp Nalu in Kihei offers affordable camping opportunities for families.

**Phase I:  
\$6,000,000**

- ❖ Renovation of 8,042 square feet of the Existing Facility
- ❖ New Two Story Addition to increase square footage by 23,251 square Feet
  - A new Teen Center
  - Childwatch Area for Infants and Young Children
  - A New Senior Center
  - Social Enterprise Opportunities with Healthy Food Kiosk
  - Elevator for ADA Accessibility

Strong community support has enabled the Maui Family YMCA to be self sustaining. However, since 55% of our members and program participants earn less than \$40,000 annually and many are supported by our scholarship program, we must seek both government and private funding to for our project.

Our request to the legislature is for \$2,555,000 for Phase I of the project. The YMCA has already raised **\$2,994,636.00**. A grant in aid would enable the YMCA to begin construction on Phase I within the next 12-18 months.

Maui Family YMCA • 250 Kanaloa Avenue • Kahului, HI 96732

Phone: (808) 242-9007 • Fax: (808) 244-6713 • www.mauiyymca.org • Member Agency Maui United Way

**YMCA mission:** To enhance the quality of life for individuals, families and our community through programs that foster moral growth and build healthy spirit, mind and body for all.