

To be Eligible

YOU

- ✓ 1. Receive services from the Regional Center.
- ✓ 2. Are 3 years or older.
- ✓ 3. Agree to receive services in the community, not in settings like licensed care homes and day programs.
- ✓ 4. Agree to and follow SDS participant responsibilities.



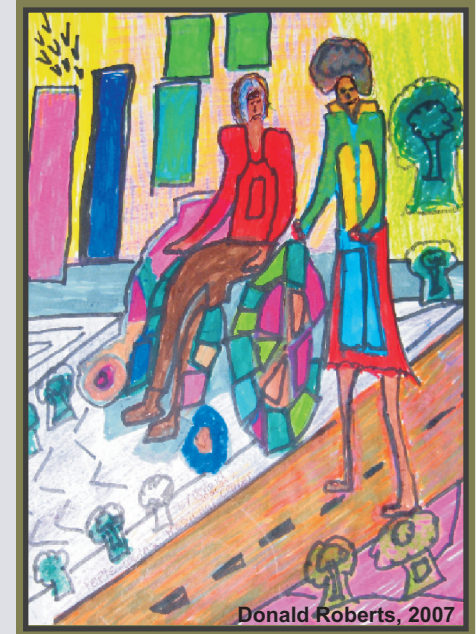
Types of Services

Supports Broker
Financial Management Services
Community Living Supports
Transportation
Employment Supports
Environment/Medical Support
Health and Clinical Services
Training and Education

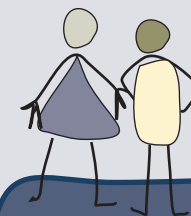
For more information

- Go to www.dds.ca.gov
- Contact your Regional Center

SELF-DIRECTED SERVICES



Donald Roberts, 2007



YOU ARE IN CHARGE

Self-Directed Services

How it Works

Important Words

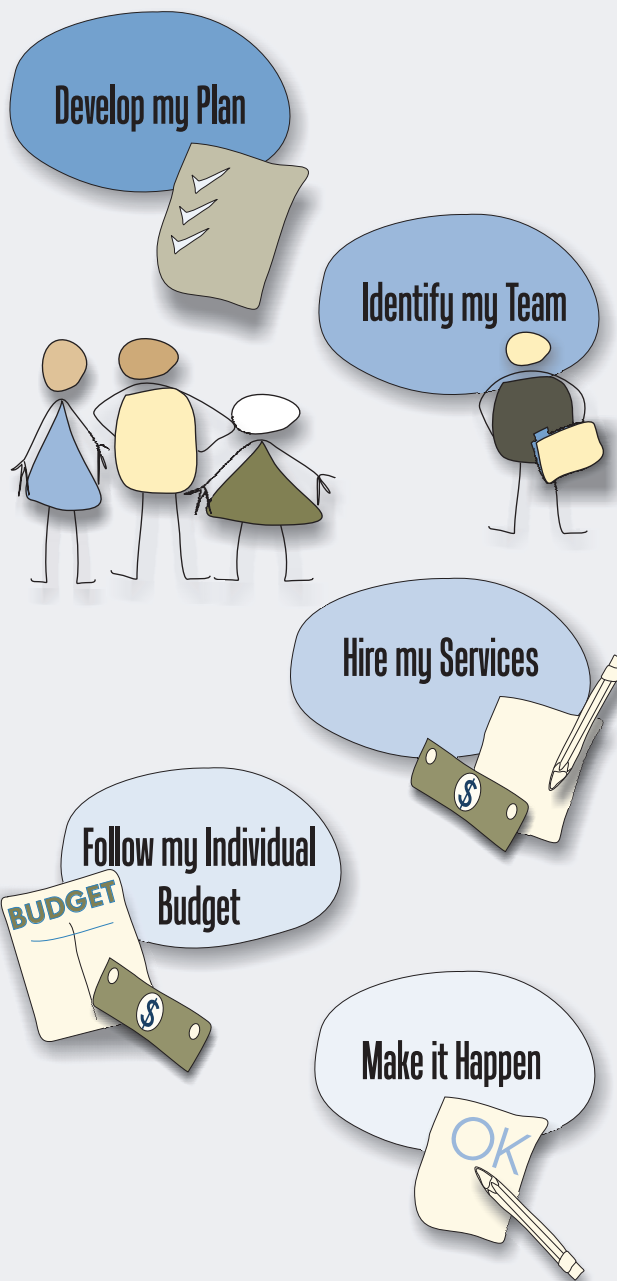
Self-Directed Services (SDS) is a voluntary program at your regional center where you select, hire and manage your service providers.

YOU choose services and supports for your IPP.

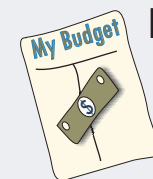
YOU have an Individual Budget to purchase your own services and supports.

YOU choose and manage your community service providers.

YOU have the help you need to carry out your plan.



Individual Budget



Based on a fixed amount of money to pay for services and supports in your plan.

Supports Broker



A person you hire to help you write your plan, find, and direct services and supports in your plan.

Financial Management Services



A service you hire to help manage your Individual Budget and employer duties.