



U.S. Department
of Transportation
**Federal Aviation
Administration**

ADMINISTRATOR'S FACT BOOK

August 2005

(Updated quarterly)

Produced by:
Assistant Administrator for Financial Services

Web site: <http://www.atctraining.faa.gov/factbook>

Table of Contents

FAA Vision and Mission.....	Inside Front Cover
FAA Values	Inside Back Cover

Safety

Aviation Accidents by Type of Operations	3*
Aviation Accident Rates by Type of Operation.....	4*
Airspace Incidents by Incident Type.....	5*
Airspace Incident Rates by Incident Type.....	6*
NTSB U.S. Transportation Fatalities	7

FAA Air Traffic

FAA Air Traffic Activity	8*
Air Route Traffic Control Center Activity.....	9*
50 Busiest FAA Air Traffic Control Towers.....	10*
50 Busiest Approach Control Facilities.....	12*
Automated Flight Service Station Activity.....	14*

Airports

Number of U.S. Airports.....	16
National Airspace Systems Delays	17*

Aircraft

U.S. Air Carrier Activity	18
U.S. General Aviation Activity.....	19*
Aircraft Certification Service	20

Industry Trends

Scheduled U.S. Air Carrier Traffic & Fin. Trends	21*
Aviation Forecasts	22*

Commercial Space Transportation

AST Licensing and Industry Activity	23*
U.S. Commercial Space Launch Schedule	24*

Airmen

Active Pilots and Nonpilots	25*
FAA Organizational Chart.....	Center Fold

Table of Contents (cont.)

FAA Regional Boundaries Map	28
-----------------------------------	----

FAA Resources

FAA Employment	29
FAA Percent Minority and Women Employment.....	30
FAA Major Work Force Employment.....	31
Labor Relations.....	32
FAA Finances	33*
FAA NAS Operational Facilities.....	34*

Organization

FAA Officials–Washington Headquarters.....	35*
FAA Officials–Major Field Organizations.....	38*
FAA Officials--International Offices	40*
FAA Flight Plan 2005-2009	41*

For further information call ABA-1 (202-267-9105)

*Updated this issue

Distribution: A-WXYZE-3; A-FOF-O(STD)

Aviation Accidents by Type of Operation

Type of Operation	Year	Jan	Feb	Mar	Apr	May	Jun	Jul	Aug	Sep	Oct	Nov	Dec	Year Total
Large Air Carrier	2004	0	2	2	5	2	1	3	3	3	4	1	3	29
	2005	4	1	5	0									10
Commuter	2004	0	1	0	2	0	0	0	0	1	1	0	0	5
	2005	0	1	0	1									2
Air Taxi	2004	5	1	9	3	3	3	9	8	10	3	8	6	68
	2005	4	9	2	3									18
General Aviation	2004	92	108	100	133	157	156	200	172	163	148	95	90	1,614
	2005	94	85	109	125									413
Rotorcraft*	2004	7	13	8	14	16	16	26	25	16	13	12	12	178
	2005	11	11	10	9									41

* Part 135 and US registered general aviation rotorcraft accidents.

Note: Preliminary data and subject to change.
As of: 04/30/05

Source: AAI-200
(202) 267-3279

Aviation Accident Rates by Type of Operation

Type of Operation	2001		2002		2003		2004		% Chg 04-03	
	Number	Rate	Number	Rate	Number	Rate	Number	Rate	Number	Rate
Large Air Carriers.....	46	.24	41	.24	54	.32	28	.16	-48%	-50%
Commuter.....	7	2.33	8	3.18	2	0.72	5	1.52	150%	111%
Air Taxi.....	72	2.40	59	2.03	76	2.61	68	2.21	-11%	-15%
General Aviation.....	1,726	6.78	1,713	6.69	1,742	6.71	1,614	6.22	-7%	-7%

Accident Rates are per 100,000 Flight Hours. Flight hours compiled by FAA
Rotorcraft rates discontinued, currently under review

Note: 2003 data preliminary.
As of: 06/07/05

Source: NTSB
www.nts.gov/aviation/stats.htm

Airspace Incidents by Incident Type

Incident Type	Year	Jan	Feb	Mar	Apr	May	Jun	Jul	Aug	Sep	Oct	Nov	Dec	Year Total
Near Midair Collisions	2004	11	16	10	8	14	10	19	10	9	12	15	11	145
	2005	9	6	14	14									43
Pilot Deviations	2004	158	152	210	217	215	249	270	272	228	284	211	162	2,628
	2005	139	155	187	191									672
Operational Errors	2004	74	79	91	77	100	114	125	111	112	113	122	98	1,216
	2005	90	215	151	94									550
Vehicle Pedestrian Deviations	2004	16	20	23	27	21	29	19	22	20	17	27	22	263
	2005	16	18	26	22									82
Surface Incidents	2004	48	64	69	75	77	92	89	93	58	73	83	61	882
	2005	56	65	85	77									283
Runway Incursions*	2004	13	27	30	25	20	39	32	37	17	21	31	18	310
	2005	18	21	29	26	33								127

Note: Preliminary data and subject to change.

Source: ATX-400
(202) 385-4802
*ATS
(202) 385-4788

As of: 04/30/2005
*As of: 05/31/2005

Airspace Incident Rates by Incident Type

Incident Type									Percent Change	
	2001		2002		2003		2004		2003 - 2004 (4)	
	Number	Rate	Number	Rate	Number	Rate	Number	Rate	Number	Rate
Operational Errors (1).....	1,183	.74	1,040	.66	1,211	.78	1,216	.79	0%	1%
Pilot Deviations (2).....	1,975	1.20	1,922	1.17	2,673	1.62	2,628	1.62	-2%	0%
Surface Incidents (3).....	1,249	1.91	1,009	1.55	921	1.47	882	1.40	-4%	-5%

(1) Per 100,000 Facility Activities

(2) Per 100,000 Flight Hours

(3) Per 1,000,000 Airport Operations

(4) Calculations use fifteen decimal places for rates (rounded two places for display).

Note: 2002 data preliminary and subject to change.

Source: ATX-400

(202) 385-4802

As of: 06/07/05

National Transportation Safety Board

2002-2003 U.S. Transportation Fatalities

	2002	2003 ¹
Highway		
Passenger cars.....	20,569	19,460
Light Trucks and Vans.....	12,274	12,444
Pedestrians.....	4,851	4,749
Motorcycles.....	3,270	3,661
Pedalcycles ²	665	622
Medium and heavy trucks.....	689	723
Buses.....	45	40
All Other ³	642	944
Total.....	43,005	42,643
Grade Crossings ⁴	(357)	(329)
Rail		
Intercity ⁵		
Trespassers and nontrespassers..... ⁶	603	568
Employees and contractors.....	31	24
Passengers on trains.....	7	2
Light, heavy, and commuter rail..... ⁷	220	173
Total.....	861	767
Marine		
Recreational Boating.....	750	703
Cargo Transport.....	22	15
Commercial fishing..... ⁸	28	25
Commercial Passengers.....	9	16
Total.....	809	759
Aviation		
General Aviation.....	581	626
Airlines.....	0	22
Air Taxi.....	35	45
Commuter.....	0	2
Foreign/Unregistered..... ⁹	9	12
Total.....	625	707
Pipeline		
Gas.....	10	12
Liquids.....	1	0
Total.....	11	12
GRAND TOTAL.....	45,311	44,888

1 2003 preliminary estimates. Aviation data from NTSB; all other from DOT. 2 Includes bicycles or other cycles. 3 Includes vehicle occupant fatalities in vehicle types; ex. farm or construction equipment. 4 Grade crossing fatalities not counted separately for determining the grand totals because they are included in the highway and rail categories, as appropriate. 5 Data reported to Federal Rail Administration (FRA). 6 Includes persons on railroad property with and without permission. Does not include motor vehicle occupants killed at grade crossings. 7 Data reported to the FTA. Fatalities for commuter rail operations may also be reported to the FRA and may be included in the intercity railroad fatalities. 8 Refers to only operational fatalities. 9 Includes non-U.S. registered aircraft involved in accidents in the U.S.

Air Traffic

FAA Air Traffic Activity (In Thousands)

Aircraft Handled by	Jan-Apr 2005*	Jan-Apr 2004	Jan-Dec 2,004
FAA ARTCC's			
Air Carrier.....	8,229	7,862	24,278
Air Taxi.....	3,288	3,345	10,029
General Aviation.....	2,700	2,729	8,374
Military.....	1,378	1,353	4,071
TOTAL....	15,595	15,289	46,752
Airport Operations			
Logged by FAA Towers			
Air Carrier.....	4,367	4,182	12,923
Air Taxi.....	3,500	3,448	10,766
General Aviation.....	6,546	6,900	21,383
Military.....	593	621	1,801
TOTAL....	15,006	15,151	46,873
Instrument Operations			
Logged by FAA Towers			
Air Carrier.....	4,802	4,640	14,209
Air Taxi.....	4,205	4,203	12,917
General Aviation.....	5,419	5,671	17,967
Military.....	966	1,051	3,016
TOTAL....	15,392	15,565	48,109
Flight Services	Jan-Jun	Jan-Jun	
Logged by: **	2005	2004	
Flight Service Stations.....	11,313	12,709	893
Automated Flight Service Stations.....	381	395	25,922
TOTAL....	11,694	13,104	26,815

*Preliminary Source: APO-130
 As of: 01/31/05 (202) 267-3350
 **As of: 07/22/05 ATO-A/AJA
 **Preliminary - May and June data subject to change (202) 385-4734

Air Route Traffic Control Center Activity

CY 2004 Rank	Center	Aircraft Handled (000's)		
		Jan-Apr 2005*	Jan-Apr 2004	Jan-Dec 2004
1	Atlanta, GA.....	1,086	1,048	3,138
2	Cleveland, OH.....	967	991	3,102
3	New York, NY.....	1,033	970	3,048
4	Chicago, IL.....	930	956	2,998
5	Washington, DC.....	1,029	921	2,934
6	Indianapolis, IN.....	937	925	2,881
7	Miami, FL.....	950	896	2,438
8	Jacksonville, FL.....	912	860	2,415
9	Memphis, TN.....	757	757	2,297
10	Fort Worth, TX.....	696	737	2,213
11	Minneapolis, MN.....	671	674	2,180
12	Los Angeles, CA.....	757	726	2,174
13	Houston, TX.....	724	715	2,107
14	Kansas City, KS.....	673	664	2,056
15	Boston, MA.....	576	569	1,883
16	Denver, CO.....	592	600	1,836
17	Albuquerque, NM.....	595	599	1,765
18	Oakland, CA.....	554	558	1,688
19	Salt Lake City, UT.....	496	490	1,522
20	Seattle, WA.....	410	410	1,309
21	Anchorage, AK.....	186	178	613
22	Guam **.....	64	44	153

*Preliminary

**Center Radar Approach Control (CERAP)

As of: 06/02/05

Source: APO-130
(202) 267-3350

50 Busiest FAA Airport Traffic Control Towers

Airport Operations (000's)

CY 2004 Rank	Tower and State	Airport Operations (000's)		
		Jan-Apr 2005*	Jan-Apr 2004	Jan-Dec 2004
1	Chicago/O'Hare Int'l., IL.....	317	325	992
2	Atlanta International, GA.....	325	319	965
3	Dallas/Ft. Worth Int'l., TX.....	234	270	814
4	Los Angeles Int'l, CA.....	212	211	655
5	Phoenix Sky Harbor Int'l, AZ.....	202	199	599
6	Denver International, CO.....	180	185	567
7	Las Vegas/McCarran Int'l, NV.....	196	188	562
8	Minneapolis-St. Paul Int'l, MN.....	178	174	541
9	Detroit Metro Wayne Co., MI.....	173	168	523
10	Houston/G Bush Intercont'l, TX.....	180	170	521
11	Covington/Cincinnati Int'l, KY.....	173	167	516
12	Washington Dulles Int'l, VA.....	191	126	503
13	Philadelphia Int'l, PA.....	175	146	475
14	Charlotte/Douglas Int'l, NC.....	171	151	468
15	Van Nuys, CA.....	136	148	449
16	Newark International, NJ.....	142	143	440
17	Boston/Logan Int'l, MA.....	132	127	422
18	Salt Lake City Int'l, UT.....	146	136	413
19	La Guardia, NY.....	132	132	406
20	Miami International, FL.....	133	138	396
21	Memphis International, TN.....	129	126	381
22	Santa Ana/John Wayne, CA.....	123	121	373
23	Seattle Tacoma Int'l, WA.....	109	112	359
24	Orlando/Sanford, FL.....	117	121	357
25	Denver/Centennial.....	120	109	357

*Preliminary

As of: 6/2/2005

50 Busiest FAA Airport Traffic Control Towers

CY 2004 Rank	Tower and State	Airport Operations (000's)		
		Jan-Apr 2005*	Jan-Apr 2004	Jan-Dec 2004
26	San Francisco Int'l, CA.....	112	115	353
27	Phoenix-Deer Valley, AZ.....	120	124	389
28	Metropolitan Oakland Int'l.....	108	111	343
29	Chicago Midway, IL.....	90	109	240
30	Long Beach/Daugherty, CA.....	111	110	339
31	Pittsburgh International, PA.....	89	117	336
32	John F. Kennedy Int'l, NY.....	115	101	333
33	Orlando International, FL.....	125	109	326
34	Honolulu International, HI.....	109	99	320
35	Fort Lauderdale/Hollywood, FL.....	123	114	315
36	Anchorage International, AK.....	80	77	309
37	Baltimore/Wash. Int'l, MD.....	101	99	309
38	Daytona Beach Int'l, FL.....	81	123	301
39	Seattle/Boeing Field, WA.....	96	95	299
40	Lambert-St. Louis Int'l, MO.....	97	95	290
41	Tulsa/Riverside, OK.....	115	94	285
42	Prescott/E. A. Love Field, AZ.....	83	113	273
43	Washington National, DC.....	91	89	271
44	Grand Forks International, FL.....	90	90	266
45	Cleveland Hopkins Int'l, OH.....	84	85	264
46	Portland International, OR.....	84	84	263
47	Mesa/Falcon Field, AZ.....	91	100	262
48	Tucson International, AZ.....	90	87	253
49	Dallas/Love Field, TX	77	83	249
50	Raleigh-Durham Int'l, NC	83	77	249

50 Busiest Radar Approach Control Facilities

CY 2004 Rank	Facilities/State	Instrument Ops (000s)		
		Jan-Apr 2005*	Jan-Apr 2004	Jan-Dec 2004
1	Southern Calif. TRACON, CA.....	673	689	2,124
2	New York TRACON, NY.....	638	631	2,067
3	Potomac TRACON, DC.....	603	551	1,845
4	North California TRACON, CA.....	481	513	1,598
5	Chicago TRACON, IL.....	454	482	1,502
6	Atlanta TRACON, GA.....	457	463	1,387
7	Dallas/Ft Worth, TRACON, TX.....	393	430	1,306
8	Miami International, FL.....	334	329	914
9	Houston TRACON, TX.....	296	297	664
10	Denver TRACON, CO.....	244	250	771
11	Phoenix TRACON, AZ.....	259	264	765
12	Detroit TRACON, MI.....	228	225	722
13	Boston TRACON, MA.....	221	187	692
14	Minneapolis TRACON, MN.....	217	215	681
15	Philadelphia International, PA.....	235	207	672
16	Covington/Cincinnati Int'l, KY.....	218	214	668
17	San Juan CERAP, PR.....	241	239	658
18	Las Vegas TRACON, NV.....	214	218	640
19	Orlando International, FL.....	226	213	610
20	Charlotte/Douglas Int'l, NC.....	212	194	601
21	Tampa International, FL.....	215	210	571
22	Seattle/Tacoma TRACON, WA.....	178	167	559
23	Salt Lake City TRACON, UT.....	180	174	525
24	Honolulu Control Facility, HI	179	169	507
25	Daytona Beach Int'l, FL.....	159	207	495

* Preliminary

Source: APO-130
(202) 267-9947

As of: 01/31/05

50 Busiest Radar Approach Control Facilities

CY 2004 Rank	Facilities/State	Instrument Ops (000's)		
		Jan-Apr 2005*	Jan-Apr 2004	Jan-Dec 2004
26	Memphis International, TN.....	151	148	457
27	St Louis TRACON, MO.....	148	146	454
28	Pittsburgh International, PA.....	118	145	431
29	Jacksonville Int'l, FL.....	151	154	415
30	Cleveland Hopkins Int'l, OH.....	114	125	387
31	Pensacola TRACON, FL.....	119	144	383
32	San Antonio Int'l, TX.....	124	129	382
33	Port Columbus Int'l, OH.....	117	120	375
34	Palm Beach International, FL.....	148	148	366
35	Dayton International, OH.....	105	107	360
36	Washington National, DC.....	118	116	353
37	Corpus Christi, TX.....	112	114	351
38	Portland TRACON, OR.....	102	101	331
39	Anchorage TRACON, AK.....	92	91	330
40	Raleigh-Durham Int'l, NC.....	105	103	326
41	Baltimore-Washington Int'l, MD.....	105	104	323
42	Indianapolis International, IN.....	106	97	322
43	Milwaukee/Gen Mitchell Intl, WI....	98	98	315
44	Nashville International, TN.....	100	100	310
45	Austin, TX.....	104	99	307
46	Norfolk International, VA.....	94	95	303
47	Kansas City International, MO.....	89	90	289
48	Wichita Mid Continent, KS	83	85	274
49	Louisville Intl/Standiford, KY.....	82	85	271
50	Tulsa International, OK	82	84	259

Automated Flight Service Stations Activity

CY 2004 Rank	AFSS/State	Flight Services (000's)		
		Jan-Jun 2005*	Jan-Jun 2004	Jan-Dec 2004
1	Miami AIFSS, FL.....	611	703	1,265
2	St. Petersburg, FL.....	502	496	942
3	Leesburg, VA.....	348	392	762
4	Fort Worth, TX.....	322	373	726
5	Lansing, MI.....	294	339	722
6	Macon, GA.....	270	346	662
7	Prescott, AZ.....	292	331	634
8	San Angelo, TX.....	194	309	593
9	Denver, CO	240	287	578
10	Seattle, WA.....	246	267	575
11	Raleigh, NC	262	281	573
12	Millville, NJ	212	270	570
13	Princeton, MN.....	235	254	564
14	Williamsport, PA.....	209	249	554
15	Kankakee, IL	221	255	548
16	Bridgeport, CT.....	195	238	533
17	Conroe, TX.....	240	250	506
18	Green Bay, WI.....	192	213	504
19	Anniston, AL.....	235	238	484
20	Altoona, PA.....	197	222	483
21	Mc Alester, OK.....	234	244	475
22	Hawthorne, CA.....	217	238	468
23	Kenai, AK	208	209	448
24	Oakland, CA.....	182	219	444
25	Columbia, MO.....	196	213	438
26	Gainesville, FL.....	198	225	431
27	Albuquerque, NM.....	190	208	424
28	Terre Haute, IN	168	200	418
29	Anderson, SC.....	187	201	400
30	Reno, NV.....	183	197	399

* Preliminary

Source: ATX-400
(202) 385-4734

Automated International Flight Service Station--AIFSS

As of: 01/31/05

Automated Flight Service Stations Activity

CY 2004 Rank	AFSS/State	Flight Services (000's)		
		Jan-Jun 2005*	Jan-Jun 2004	Jan-Dec 2004
31	Burlington, VT.....	155	165	386
32	Nashville, TN.....	207	180	386
33	Riverside, CA.....	182	196	385
34	St. Louis, MO.....	158	184	376
35	Rancho Murieta, CA.....	170	184	371
36	Cleveland, OH.....	143	173	365
37	Jonesboro, AR.....	171	182	362
38	Mc Minnville, OR.....	151	163	352
39	Islip AIFSS, NY.....	127	156	331
40	Dayton, OH.....	128	156	326
41	Cedar City, UT.....	145	159	325
42	Bangor, ME.....	119	146	324
43	Wichita, KS.....	137	156	317
44	Grand Forks, ND.....	133	156	309
45	De Ridder, LA.....	139	153	297
46	Elkins, WV.....	142	127	285
47	Fort Dodge, IA.....	116	129	279
48	San Diego, CA.....	132	141	270
49	Honolulu, HI.....	142	143	267
50	San Juan IAFSS, PR.....	122	134	257
51	Louisville, KY.....	104	125	251
52	Huron, SD.....	110	117	250
53	Buffalo, NY.....	91	112	246
54	Greenwood, MS.....	99	120	238
55	Great Falls, MT.....	89	95	207
56	Columbus, NE.....	83	97	202
57	Jackson, TN.....	77	92	183
58	Boise, ID.....	71	82	179
59	Fairbanks, AK.....	71	77	178
60	Casper, WY.....	66	76	160
61	Juneau, AK.....	53	64	137

Airports

Number of U.S. Airports ¹ (As of December 31)

	2004	2003	2002
Total Airports	19,815	19,581	19,572
Public Use Airports.....	5,288	5,286	5,286
# with Paved Runways.....	3,941	3,938	3,940
# with Unpaved Runways....	1,347	1,348	1,346
# with Lighted Runways.....	4,037	4,026	4,024
# with Unlighted Runways...	1,251	1,260	1,262
Private Use Airports.....	14,532	14,295r	14,286
# with Paved Runways.....	4,771	4,678	4,632
# with Unpaved Runways...	9,761	9,617	9,654
# with Lighted Runways.....	1,301	1,223	1,183
# with Unlighted Runways..	13,231	13,072	13,103
Public use airports abandoned...	10	19	16
Private use airports abandoned.	117	214	121
Certificated Airports*	599	628	633
Civil	542	555	558
Military	57	73	75

¹ Includes civil and joint-use civil-military airports, heliports, STOLports, and seaplane bases in the U.S. and its territories.

* Certificated airports serve Air Carrier Operations with aircraft seating more than 9 passengers seats. (FAR Part 139).

r revised

As of: 12/31/04

Source: AAS-330
(202) 267-8752

National Airspace Total System Delays

Year	Jan	Feb	Mar	Apr	May	Jun	Jul	Aug	Sep	Oct	Nov	Dec	YTD Total
2005*	32121	30176	34633	25887	30920	48922	58289						260,948
2004	28,104	32,274	34,001	32,459	50,800	52,121	46,894	43,770	30,412	37,271	35,234	32,446	455,786
2003	16,159	18,260	25,387	17,474	26,544	27,413	32,833	37,066	28,882	21,422	34,116	31,332	316,888
2002	14,158	13,821	20,020	24,027	28,533	33,770	32,304	29,056	24,493	25,266	17,712	22,489	285,649
2001	27,894	31,599	30,040	30,260	36,460	41,607	40,037	49,423	18,628	13,365	13,249	15,541	348,103 r/

Delays of 15 minutes or longer

r/ Revised

* Preliminary information that is subjected to change

Source: ATT-220
(703) 904-4470

As of: 7/31/05

Aircraft

U.S. Air Carrier Activity

	CY 2004	CY 2003	CY 2002
Total Number of Aircraft¹.....	19,382	19,356	19,578
Type of Carrier			
Domestic, flag, supplemental, scheduled, cargo air carriers, and commercial operators.....	7,720	7,579	7,576
Commuter Air Carriers and Air Taxis.....	11,662	11,777	12,002
Total Number of Aircraft¹.....	19,382	19,356	19,578
Type of Aircraft			
Jet.....	9,235	9,673	8,675
Turboprop.....	3,281	3,179	3,777
Piston.....	4,269	3,949	4,605
Rotary Wing.....	2,571	2,581	2,521
Air Carrier Traffic Statistics² (Millions)*			
Passenger miles flown.....	655,850	672,240	654,068
Passenger enplanements.....	647	613	630
Ton miles.....	91,564	94,430	95,919
Aircraft miles flown.....	7,068	7,104	6,838
Passenger load factor ³			
Domestic.....	54.8%	55.0%	70.3%
International.....	58.9%	59.0%	76.6%

¹ Source: Vital Information System

² Includes domestic and international scheduled service, of Certificated Route Air Carriers only.

³ Proportion of aircraft seating capacity that is sold.

As of: 02/28/05

Source: AFS-40
(202) 385-4514
*BTS (K-25)
(202) 366-8513

U.S. General Aviation and Air Taxi Activity

(Calendar Years)

	Estimated Active Aircraft (thousands)		Estimated Hours Flown (Millions)	
	2003	2002	2003	2002
Total	209.7	211.2	27.3	27.0
By Type Aircraft				
Piston.....	160.9	151.1	19.0	18.9
Turboprop.....	7.7	6.8	1.9	1.9
Jet.....	8.0	8.4	2.7	2.8
Rotary Wing.....	6.5	6.7	2.1	1.8
Other.....	6.0	6.4	0.3	0.3
Experimental.....	20.6	22.0	1.3	1.3
By Type Flying				
Corporate.....	10.5	10.8	3.2	3.3
Business.....	25.0	24.2	3.4	3.3
Personal.....	146.7	146.0	11.3	11.0
Instructional.....	12.7	13.2	4.4	4.2
Aerial Application.....	3.3	4.0	1.1	1.2
Aerial Observation.....	4.2	4.5	1.3	1.4
Aerial Other.....	0.8	0.9	0.1	0.1
External Load.....	0.2	0.2	0.1	0.1
Other Work.....	1.7	1.7	0.4	0.4
Sightseeing.....	0.9	0.6	0.2	0.1
Air Tours.....	0.2	0.3	0.2	0.2
Air Taxi.....	2.6	3.9	1.2	1.4
Air Medical Services...	0.9	1.0	0.5	0.4

Source: APO-110

As of: 06/02/05

(202) 267-3103

Aircraft Certification Service

Aircraft Certification Mission and Program Profiles

	FY 2004	FY 2003
Type Certificates/Supplemental Type Certificates Issued.....	984	906
Other Design Approvals Issued.....	14,146	11,540
Production Approvals (Including Amendments) Issued.....	2,582	2,558
Airworthiness Certificates Issued.....	831	798
New Airworthiness Directives (AD) Issued.....	417	339
New Designees (Representative of the Administrator) Appointed.....	879	864
Total Active Designees.....	5,146	5,049

As of: 9/30/04

Source: AIR-503
(202) 267-7260

Industry Trends

Scheduled U.S. Air Carrier Traffic and Financial Trends

	1st Half FY 2005	1st Half FY 2004	Numerical Change	Percent Change
TRAFFIC				
ASM'S (in millions)				
Majors.....	423,460	407,564	15,896	3.9
Nationals.....	52,880	45,829	7,051	15.4
Regionals.....	3,998	3,488	510	14.6
Totals.....	480,337	456,880	23,457	5.1
RPM's (in millions)				
Majors.....	317,629	295,609	22,020	7.4
Nationals.....	37,536	32,131	5,406	16.8
Regionals.....	2,668	2,222	447	20.1
Totals.....	357,834	329,962	27,873	8.4
Load Factor (in percent)				
Majors.....	75.0	72.5	2.5	
Nationals.....	71.0	70.1	0.9	
Regionals.....	66.7	63.7	3.0	
Totals.....	74.5	72.2	2.3	
FINANCIAL				
Revenues (in millions)				
Majors.....	\$58,536	\$53,814	4,722	8.8
Nationals.....	7,151	7,330	(179)	(2.4)
Regionals.....	701	530	171	32.3
Totals.....	\$66,388	\$61,674	\$4,714	7.6
Expenses (in millions)				
Majors.....	\$61,891	\$54,777	\$7,114	13.0
Nationals.....	7,004	6,846	159	2.3
Regionals.....	710	498	212	42.6
Totals.....	\$69,606	\$62,121	\$7,485	12.0
Operating Profit/Loss (in millions)				
Majors.....	(\$3,356)	(\$963)	(\$2,392)	
Nationals.....	147	484	(337)	
Regionals.....	(10)	32	(41)	
Totals.....	(\$3,218)	(\$448)	(\$2,771)	

*Mesa Air Group financial results have not been reported for the second quarter of FY 2005.

**Includes a \$1.9 billion charge taken by Delta Air Lines during the first quarter of FY 2005 representing a write off of good will.

Source: APO-110

As of: 07/21/05

21

(202) 493-4236

Aviation Forecasts

Estimated Forecast
FY 2004 FY 2008

FAA FACILITY WORKLOAD

Aircraft Handled by FAA ARTCC's (Millions)

Air Carrier.....	23.9	25.9
Air Taxi/Commuter.....	9.9	11.9
General Aviation.....	8.4	8.8
Military.....	4.0	4.0
Total.....	46.2	50.6

Operations Logged by FAA Towers (Millions)

Airport.....	63.1	68.8
Instrument.....	49.1	53.6

Flight Services Logged by Flight Services Stations (Millions)

	27.1	27.0
--	------	------

CIVIL AVIATION ACTIVITY

Certificated Route Air Carrier

Revenue Passenger Enplanements (Millions).....	559.5	629.9
Revenue Passenger Miles (Billions).....	608.2	795.2

Air Carrier Aircraft.....

	5,020	5,686
--	-------	-------

General Aviation Estimated

Hours Flown (Millions)**.....	27.3	29.2
Active Aircraft (Thousands)**.....	211.3	226.7

ESTIMATED FUEL CONSUMED BY U.S. DOMESTIC CIVIL AVIATION (Millions of Gallons)

Jet Fuel

Air Carrier.....	18,081	21,835
General Aviation.....	1,015	1,277

Aviation Gas

Air Carrier.....	2	2
General Aviation.....	276	294

Active Pilots (Thousands)**	618,633	669,290
--	---------	---------

** Calendar Year

Source: APO-110
(202) 493-4236

As of: 3/20/05

U.S. Commercial Space Transportation FAA Licensed Activity

	CY 2005 (Projected)	CY 2004	CY 2003
<hr/>			
Licensed Commercial Launches			
TOTAL	9	14	8
Number of Orbital Launches	9	9	8
Number of Suborbital Launches	0	5	0
By Launch Vehicle Type			
Delta Family (Boeing Company)	1	0	0
Atlas Family (Lockheed Martin)	1	5	4
Pegasus (Orbital Sciences Corp.)	1	0	1
Taurus (Orbital Sciences Corp.)	0	1	0
Zenit 3SL (Sea Launch)	5	3	3
Falcon 1 (SpaceX)	1	0	0
SpaceShipOne (Scaled Composites)	0	5	0
other suborbital	0	0	0
By Launch Site (Federal)			
Cape Canaveral AF Station, FL	2	5	4
Vandenberg AFB, CA	0	1	1
Kwajalein / Marshall Islands	2	0	0
By Launch Site (Commercial)			
Pacific Ocean	5	3	3
Mojave Airport, CA	0	5	0
<hr/>			

As of: 6/30/05

Source: AST
(202) 267-7989

United States Commercial Space Launch Schedule, CY 2005

(launch dates are subject to change)

Payload (Operator)/ Description	Launch Company/ Vehicle	Launch Date/ Launch Site (Status)
<i>XM 3</i> (U.S.) Communications Satellite	Sea Launch (Boeing Launch Services, BLS) Zenit 3SL	February Pacific Ocean Platform (Successful)
<i>INMARSAT 4 F1</i> (multinational) Comm. Satellite	Lockheed Martin (International Launch Services) Atlas V	March Cape Canaveral Air Force Station, FL (Successful)
<i>Spaceway 1</i> (U.S.) Comm. Satellite	Sea Launch (BLS) Zenit 3SL	April Pacific Ocean Platform (Successful)
<i>GOES-N</i> (U.S.) Remote Sensing Satellite	The Boeing Corporation (BLS) Delta IV	June Cape Canaveral Air Force Station, FL
<i>Telstar 8 / Intelsat A-8</i> (multinational) Comm. Satellite	Sea Launch (BLS) Zenit 3SL	June Pacific Ocean Platform
<i>C/NOFS</i> (U.S.) Science Satellite	Orbital Sciences Pegasus XL	Fall Kwajalein, Marshall Islands
<i>unannounced</i> (unannounced) Comm. Satellite	Sea Launch (BLS) Zenit 3SL	Fall Pacific Ocean Platform
<i>Razaksat</i> (Malaysia) Comm. Satellite	SpaceX Falcon 1	Fall Marshall Islands
<i>unannounced</i> (unannounced) Comm. Satellite	Sea Launch (BLS) Zenit 3SL	Fall Pacific Ocean Platform

As of: 6/8/05

Source: AST
(202) 267-7989

Active Pilots and Nonpilots (As of 31 December)

	2004		2003	
	Total	Women	Total	Women
Pilot-Total	618,633	37,243	625,011	37,694
Student.....	87,910	9,857	87,296	9,897
Private.....	235,994	15,036	241,045	15,487
Commercial.....	122,592	7,421	123,990	7,436
Airline Transport.....	142,160	4,908	143,504	4,850
Other ¹	29,977	21	29,176	24
Nonpilot-Total²	515,293	18,666	509,835	18,030
Mechanic.....	317,111	5,932	313,032	5,734
Repairmen.....	39,231	2,039	37,248	1,800
Ground Instructor.....	73,735	5,500	72,692	5,385
Flight Engineer.....	59,376	2,007	61,643	2,070
Other ³	25,840	3,188	25,220	3,041
Flight Instructor	89,596	5,970	87,816	5,667

¹ Includes helicopter (only), glider (only), and recreational pilot certificates. Include Glider pilots represents pilots who received a medical examination within the last 25 months. Lighter-than-air type ratings are no longer being issued.

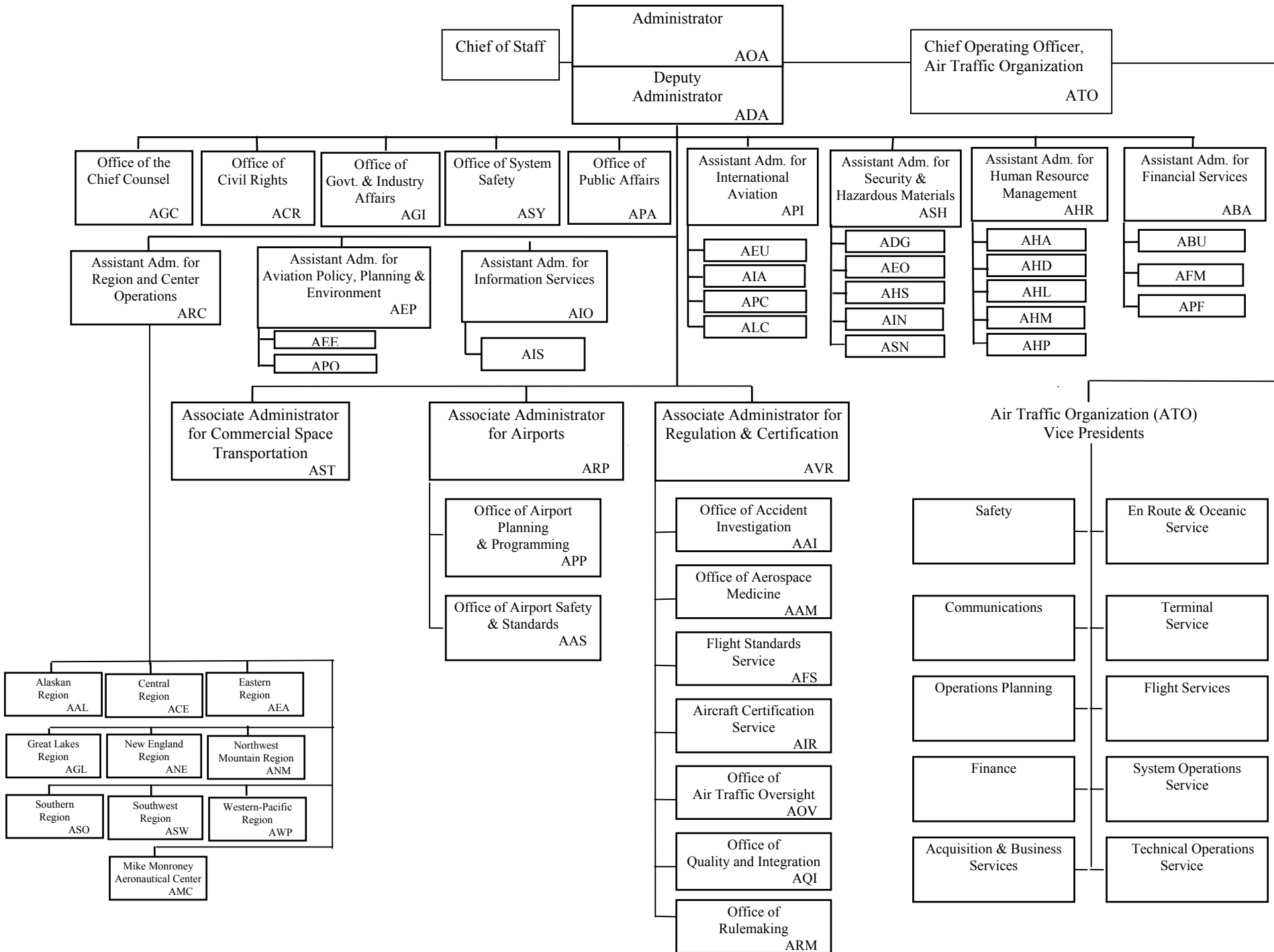
² Excludes non-pilots 70 years old or over in all certificate types except flight engineers and flight navigators.

³ Includes flight navigators, parachute riggers, and dispatchers.

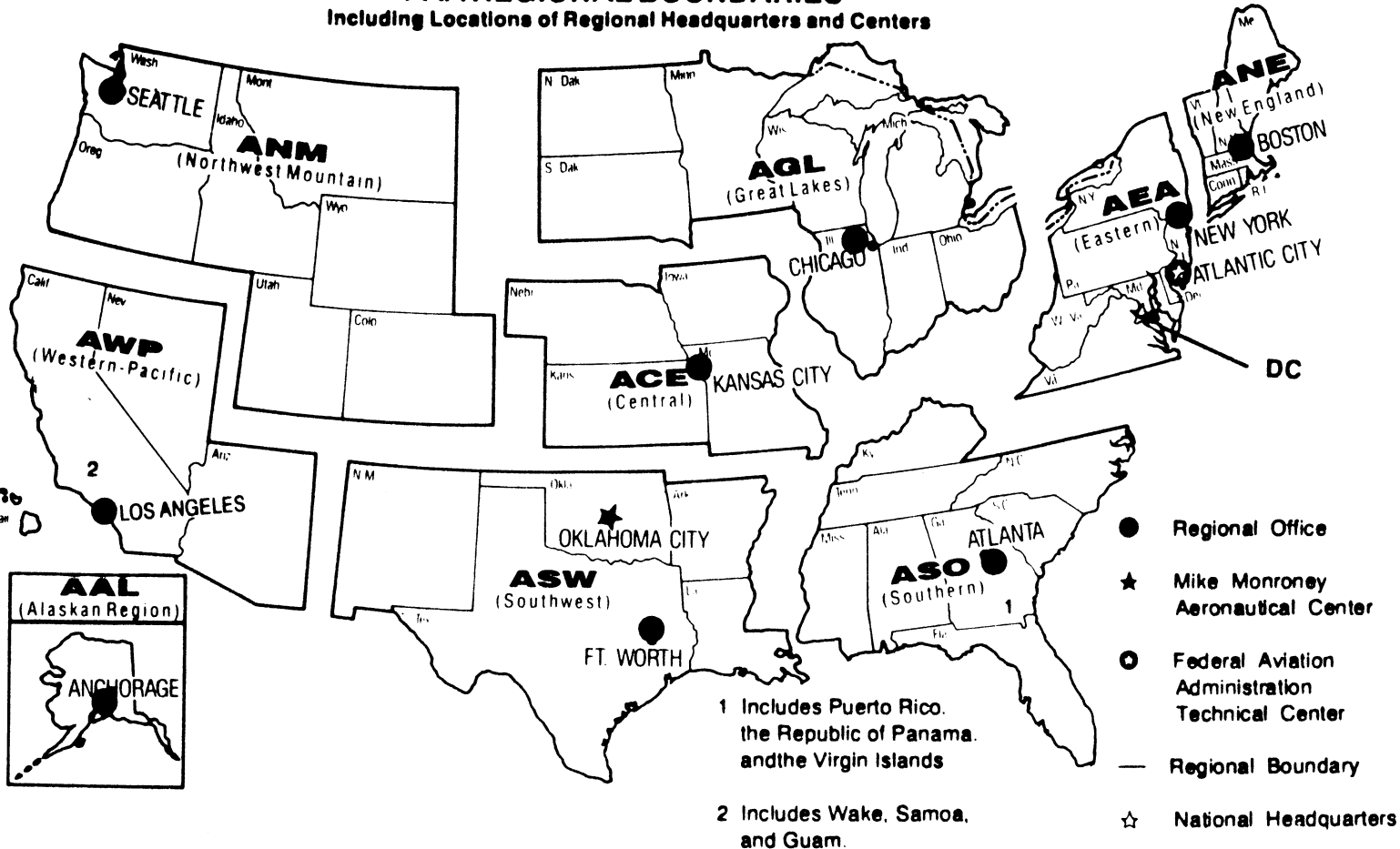
As of 12/31/04

**Source: APO-110
(202) 267-3352**

FEDERAL AVIATION ADMINISTRATION



**U.S. DEPARTMENT OF TRANSPORTATION
Federal Aviation Administration
FAA REGIONAL BOUNDARIES**
Including Locations of Regional Headquarters and Centers



FAA Resources

FAA Employment (Permanent Employees)¹

Line of Business	FY04	FY 03
Air Traffic Organization (ATO)*.....	36,328	35,801
Air Traffic Services (ATS)*.....	*	35,801
Regulation and Certification (AVR).....	6,570	6,354
Airports (ARP).....	480	461
Research and Acquisitions (ARA)*.....	*	1,722
Comm. Space Transportation (AST)....	55	56
Staff Offices*.....	3,896	4,105
*	47,329	48,503
Region/Center/Headquarters (included in above total)		
Aeronautical Center.....	1,561	1,578
Alaskan.....	1,330	1,385
Central.....	2,344	2,519
Eastern.....	5,220	5,359
Great Lakes.....	6,280	6,442
New England.....	1,861	1,938
Northwest Mountain.....	4,014	4,119
Southern.....	7,293	7,585
Southwest.....	5,259	5,293
Western-Pacific.....	5,114	5,388
Washington Headquarters (only) ²	4,178	4,055
Washington Headquarters Field ³	1,709	1,953
Technical Center.....	1,166	885

¹ Full time permanent and part time permanent employees only.

² Washington Headquarters employees physically located in FOB-10A and surrounding areas (i.e. Portals, Market Square, etc.).

³ Washington Headquarters employees physically located in the Field (i.e. Technical Center, Aeronautical Center, etc.)

* ATO became effective October 2003. ATO includes ATS, ARA and AOZ under Staff Offices.

As of: 10/25/04

Source: APF-100
(202) 267-9946

FAA Percent Minority & Female Employment¹

Lines of Business/Region/Center/Headquarters	% Minority		%Female	
	FY04	FY 03	FY04	FY 03
Air Traffic Organization (ATO)*	18.3	*	20.3	*
AirTraffic Services (ATS)*.....	*	17.5	*	19.3
Regulation and Certification (AVR).....	19.1	18.9	28.4	28.4
Airports (ARP).....	27.5	24.9	39.0	39.5
Research and Acquisitions (ARA)*.....	*	31.0	*	38.1
Commercial Space Transportation (AST).....	45.5	46.4	32.7	30.4
Staff Offices*.....	32.9	32.2	53.5	52.9
Total.....	19.8	19.5	24.4	24.2
Aeronautical Center.....	23.4	23.5	44.0	43.6
Alaskan.....	13.6	13.8	23.3	23.5
Central.....	14.9	14.7	25.6	25.1
Eastern.....	15.4	15.3	19.5	19.4
Great Lakes.....	11.5	11.4	20.6	20.4
New England.....	7.2	7.4	21.6	21.3
Northwest Mountain.....	12.9	12.9	22.3	22.4
Southern.....	21.6	21.2	19.7	19.6
Southwest.....	22.5	22.3	20.1	20.3
Western-Pacific.....	29.7	29.6	21.3	21.2
Washington Headquarters (only) ²	34.3	33.5	43.4	43.9
Washington Headquarters Field ³	19.4	19.2	33.2	32.1
Technical Center.....	21.6	21.8	31.4	32.0

¹ Full-time permanent, and part-time permanent employees only (FTE 1111 & 1132).

² Washington Headquarters employees physically located in FOB-10A and surrounding areas (i.e. Portals, Market Square, etc.).

³ Washington Headquarters employees physically located in the Field (i.e. Technical Center, Aeronautical Center, etc.).

* ATO became effective October 2003. ATO includes ATS, ARA and AOZ under Staff Offices.

Major Work Force Employment

	Employment ¹				
	FY 05 Oct-Apr	FY04	FY03	%Chg. FY05 - FY04	Actual Change
Air Traffic Controller Work Force ATCS ² (bargaining unit employees)	16,858	17,070	17,598	-1.2%	-212
Traffic Management Coordinators ² Operations Supervisors ²	14,525	14,736	15,386	-1.4%	-211
Flight Service Stations	623	612	635	1.8%	11
Field Maintenance (210-211 only)	1,710	1,722	1,577	-0.7%	-12
Airports Work Force	2,521	2,583	2,749	-2.4%	-62
Aircraft Certification	7,084	7,253	7,770	-2.3%	-169
Flight Standards Work Force	471	472	467	-0.2%	-1
	1,127	1,141	1,178	-1.2%	-14
	4,506	4,564	4,628	-1.3%	-58

¹ Full time permanent appointments (operations direct).

² Included in Air Traffic Controller Work Force Total.

Note: Supervisory Traffic Management Coordinators (STMCs) are no longer included in Controller Work Force.

Research & Acquisition (ARA) Work Force removed, organization restructured under the Air Traffic Organization (ATO).

Labor Relations

	BARGAINING UNITS	LABOR AGREEMENTS	EMPLOYEES REPRESENTED
Unions.....	45	22	37,644
AFGE.....	10	7	1,550
AFSCME (HQ).....	5	0	1,980
LIUNA.....	1	1	161
NAATS.....	1	1	2,074
NAGE.....	3	3	304
NATCA (AT).....	4	2	16,228
NATCA (AF).....	2	1	1,242
NATCA (Other).....	8	0	1,788
NFFE.....	3	2	743
PAACE.....	3	2	396
PASS (AF/AEA).....	1	1	7,204
PASS (AVN).....	1	1	326
PASS (AFS).....	2	1	3,494
PASS (AIR).....	1	0	154

AFGE	--American Federation of Government Employees
AFSCME	--American Federation of State, County, and Municipal Employees
LIUNA	--Laborer's International Union of North America
NAATS	--National Association of Air Traffic Specialists
NAGE	--National Association of Government Employees
NACTA	--National Air Traffic Controllers Association
NFFE	--National Federation of Federal Employees
PAACE	--Professional Association of Aeronautical Center Employees
PASS	--Professional Airway System Specialists

As of: 02/17/05

Source: AHL-400
(202) 267-3548

FAA Finances

(In Millions of Dollars)

	FY 2004 ¹	FY 2005 ²	FY 2006 ³
	Actual	Enacted	Request
Budget Authority (BA)			
Grants-In-Aid (Obligation Lim/Approp).....	3,380	3,472	3,000
Other Budget Authority.....	2	0	0
Research, Engineering, & Development.....	119	130	130
Facilities and Equipment.....	2,871	2,520	2,448
Operations.....	7,479	7,707 #	8,051
Flight Service Station A-76 Competition	0 #	0	150
Total.....	13,851	13,829	13,779
Obligations Incurred--Operations			
Appropriation by Line of Business			
Air Traffic Organization (ATO).....	0	0	6,647
Air Traffic Services (ATS)	5,995	6,135	0
Research and Acquisitions	212	220	0
Aviation Safety	871	903	942
Commercial Space Transportation (AST).....	11	12	12
Staff Offices (SO).....	374	437	450
Flight Service Station A-76 Competition			150
Total.....	7,463	7,707	8,201
Airport Grant Obligations (NET)			
Primary Airports & Cargo.....	1,019	1,022	908
States/Territories/Insular/Alaska Supp.....	680	698	545
Carryover Entitlements.....	336	416	400
Discretionary Fund.....	879	859	704
Small Airport Fund.....	380	388	343
Total.....	3,294	3,383	2,900
Total FAA Outlays.....	12,835	13,558	14,131
Trust Fund Receipts from Excise Taxes			
Passenger Ticket Tax.....	4,556	5,228	5,657
Passenger Flight Segment Tax.....	1,800	2,042	2,193
Waybill Tax.....	499	567	599
Fuel Tax	712	793	829
International Departure/Arrival Tax.....	1,391	1,652	1,798
Rural Airports Tax.....	71	76	80
Frequent Flyer Tax.....	145	159	163
Interest on Investment.....	477	423	450
Offsetting Collections.....	36	152	152
Total.....	9,687	11,092	11,921

Numbers may not add due to rounding. ¹ FY04 reflects across-the-board rescission of 0.59 percent per P.L. 108-199; F&E BA excludes \$21,958.7 in unobligated balance rescission; and Other BA for \$2M for Fort Worth Alliance Airport.

² FY 05 reflects across-the-board rescission 0.80 percent per P.L. 108-447.

³ FY 05 excludes Hurricane Supplemental funding of \$5.1M in F&E and \$25M in Grants in Aid. The Operations obligations by LOB in F reflects a proposed budget structure change--ATS/ARA are combined into the new ATO structure; AVS/AST remain the same; and all other LOBs are consolidated under Staff Offices.

Source: ABU-100

(202) 267-9070

As of: 06/30/05

FAA NAS Operational Facilities

(As of December 31)

	2004	2003	2002
NAS Operational Facilities¹	41,143	40,997	40,746
Communications.....	14,450	14,277	14,194
Automation.....	3,865	4,057	4,049
Environment.....	6,325	6,505	6,494
Navigation.....	11,120	11,131	11,104
Surveillance.....	1,886	1,894	1,871
Weather.....	3,497	3,133	3,034
Air Traffic Control Facilities²			
Air Route Traffic Control Center.....	21	21	21
Airport Traffic Control Tower.....	517	449	449
Flight Service ³	76	76	76
Flight Service Stations.....	16	16	16
Automated Flight Service Stations...	60	60	60

¹ Excludes non-federal facilities and foreign facilities.

² Included in NAS operational facilities.

³ Flight Service include Flight Service Stations and Automated Flight Service Stations.

As of: 12/31/04

Source: AOP-200
(202) 267-5288

FAA Officials

Washington Headquarters

Routing Symbol	Officials
AOA	Administrator Marion C. Blakey, 202-267-3111 * David Mandell, Chief of Staff, 202-267-7416 Louise E. Mailett, Senior Counsel to AOA, 202-267-7417
ADA	Deputy Administrator Bobby Sturgell, 202-267-8111 Howard Swancy, Senior Advisor to ADA, 202-267-8111
ATO	Chief Operating Officer, Air Traffic Organization Russell G. Chew, 202-493-5602 Acquisition & Business Service Vice President, Dennis DeGaetano, 202-267-7222 Communications Services Vice President, Sandra M. Sanchez, 202-267-8507 Flight Services Vice President, James H. Washington, 202-385-7500 En Route & Oceanic Services Vice President, Richard Day, 202-385-8501 Finance Services Vice President, Eugene D. Juba, 202-267-3022 Operations Planning Services * Vice President, Charles E. Keegan, 202-267-7111 System Operations Services Vice President, Michael A. Cirillo, 202-267-8558 Safety Services Vice President, William S. Davis, 202-493-5882 Terminal Services Vice President, David B. Johnson, 202-385-8801 Technical Operations Services Vice President, Steven B. Zaidman, 202-267-8181
ABA	Assistant Administrator for Financial Services Ramesh K. Punwani, CFO, 202-267-9105 Deputy, John F. Hennigan, 202-267-8928
ABU	<i>Office of Budget</i> <i>Director, Alex Keenan, 202-267-8010</i>
AFC*	<i>Office of Financial Controls</i> <i>Director, Carl Burrus (actg.), 202-267-7140</i>
AFM*	<i>Office of Financial Management</i> <i>Director, Tim Lawler, 202-267-3018</i>
ACR	Assistant Administrator for Civil Rights Fanny Rivera, 202-267-3254 Deputy, Barbara A. Edwards, 202-267-3264
AEP	Asst. Admin. for Aviation Policy, Planning & Environment Sharon L. Pinkerton, 202-267-3927 Deputy, Nancy LoBue, 202-267-7954

* Updated this issue
 As of: (7/20/2005

Source: ABA-1
 (202) 267-9105

FAA Officials

Washington Headquarters--(Cont)

Routing Symbol	Officials
AEE	<i>Office of Environment and Energy Director, Carl Bureson, 202-267-3576</i>
APO	<i>Office of Aviation Policy and Plans Director, Nan Shellabarger, 202-267-3274</i>
AGC	Chief Counsel Andrew B. Steinberg, 202-267-3222 Deputy, James W. Whitlow, 202-267-3773
AGI	Asst. Administrator for Government & Industry Affairs David Balloff, 202-267-3277 Deputy, Daniel J. Hickey, 202-267-8211
AHR	Asst. Administrator for Human Resource Management Ventris C. Gibson, 202-267-3456 Deputy, Mary Ellen Dix, 202-267-3850 Deputy for Strategic Labor, Joseph N. Miniace, 202-267-3979
AHA	<i>Office of the Accountability Board Director, Maria Fernandez-Greczmiel, 202-267-3065</i>
AHD	<i>Office of Corporate, Learning & Development Director Darlene Freeman, 202-267-9041</i>
AHL	<i>Office of Labor & Employee Relations Director, Melvin Harris, 202-267-3979</i>
AHP	<i>Office of Personnel Director, Sue A. Engelhardt, 202-267-3850</i>
AIO	Assistant Administrator for Information Services Daniel J. Mehan, CIO, 202-493-4570 Deputy, Walter Iwanow, 202-493-4570
AIS	<i>Office of Information Systems Security Director, Michael F. Brown, 202-267-7104</i>
ARD*	<i>Office of Information Technology Research and Development Chief Technology Officer, Mark T. Powell, 202-385-8150</i>
AOC*	Assistant Administrator for Communications Greg Martin, 202-267-3883 Deputy, External Communications, Laura Brown, 202-267-3883 Deputy, Internal Communications, Gerald Lavey, 202-267-9499
API*	Asst. Administrator for International Aviation Paul Feldman (Actg.), 202-385-8900
ARC	Assistant Administrator for Regions/Center Operations Ruth Leverenz, 202-267-7369 Deputy, John R. Block, 202-267-7369
ASH	Asst. Administrator for Security & Hazardous Materials Lynne A. Osmus, 202-267-7211 Deputy, Claudio Manno, 202-267-7211
ADG	<i>Office of Hazardous Materials Director, William Wilkening, Jr., 202-267-9864</i>
AEO	<i>Office of Emergency Operations and Communications Director, Claudio Manno, 202-267-8979</i>
AHS*	<i>Office of Operations Director, Thomas D. Ryan (A), 202-267-7211</i>

FAA Officials

Washington Headquarters--(Cont.)

Routing Symbol	Officials
<i>AIN</i>	<i>Office of Internal Security</i> <i>Director, Barbara Bilodeau (A), 202-366-9241</i>
<i>ASN</i>	<i>Office of Investigation</i> <i>Director, Eddie Gibson (A), 202-366-1246</i>
ARP	Associate Administrator for Airports Woodie Woodward, 202-267-9471 <i>Deputy, Catherine M. Lang, 202-267-8738</i>
<i>AAS</i>	<i>Office of Airport Safety and Standards</i> <i>Director, David L. Bennett, 202-267-3053</i>
<i>APP</i>	<i>Office of Airport Planning & Programming</i> <i>Director, Dennis E. Roberts, 202-267-8775</i>
AST	Assoc. Adm. for Commercial Space Transportation Patricia Grace Smith, 202-267-7793 <i>Deputy, Dr. George C. Nield, 202-267-7848</i>
AVS	Associate Administrator for Aviation Safety Nicholas A. Sabatini, 202-267-3131 <i>Deputy, Peggy Gilligan, 202-267-7804</i>
<i>AAI</i>	<i>Office of Accident Investigation</i> <i>Director, Steven B. Wallace, 202-267-9612</i>
<i>AAM</i>	<i>Office of Aviation Medicine</i> <i>Director, Jon L. Jordon, MD, 202-267-3535</i>
<i>AFS</i>	<i>Flight Standards Service</i> <i>Director, James Ballough, 202-267-8237</i>
<i>AIR</i>	<i>Aircraft Certification Service</i> <i>Director, John J. Hickey, 202-267-8235</i>
<i>AOV</i>	<i>Office of Air Traffic Oversight</i> <i>Director, J. David Canoles, 202-267-5202</i>
<i>AQI</i>	<i>Quality and Integration</i> <i>Director, Vi Lipski, 202-493-5860</i>
<i>ARM</i>	<i>Office of Rulemaking</i> <i>Director, Anthony F. Fazio, 202-267-9677</i>

Duty Officer

(202) 267-3333

FAA Officials

Major Field Organizations

Routing Symbol	Officials
AAL	Alaskan Region, Regional Administrator Patrick N. Poe, 907-271-5645 222 West 7th Avenue, Box 14 Anchorage, Alaska 99513-7587 Duty Officer, 907-271-5936
ACE	Central Region, Regional Administrator Christopher Blum, 816-329-3050 901 Locust Kansas City, Missouri 64106 Duty Officer, 816-329-3000
ACT	William J. Hughes Technical Center, Director Anne Harlan, Ph.D., 609-485-6641 Atlantic City International Airport New Jersey 08405 Duty Officer, 609-485-6482
AEA	Eastern Region, Regional Administrator Arlene B. Feldman, 718-553-3000 1 Aviation Plaza 159-30 Rockaway Blvd. Jamaica, New York 11434-4809 Duty Officer, 718-553-3100
AGL*	Great Lakes Region, Regional Administrator Christopher Blum, 847-294-7294 2300 East Devon Avenue Des Plaines, Illinois 60018 Duty Officer, 847-294-8400
AMC	Mike Monroney Aeronautical Center, Director Lindy Ritz, 405-954-4521 6500 South MacArthur Oklahoma City, Oklahoma 73125 Duty Officer, 405-954-3583

FAA Officials

Major Field Organizations--(Cont.)

Routing Symbol	Officials
ANE	New England Region, Regional Administrator Amy Lind Corbett, 781-238-7020 12 New England Executive Park Burlington, Massachusetts 01803 Duty Officer, 781-238-7001
ANM	Northwest Mountain Region, Regional Administrator Douglas R. Murphy, 425-227-2001 1601 Lind Avenue, S.W. Renton, Washington 98055-4056 Duty Officer, 425-227-2000
ASO	Southern Region, Regional Administrator Carolyn Blum, 404-305-5000 1701 Columbia Avenue College Park, Georgia 30337 Duty Officer, 404-305-5180
ASW	Southwest Region, Regional Administrator Ava L. Wilkerson, 817-222-5001 2601 Meacham Blvd. Ft. Worth, Texas 76137-4298 Duty Officer, 817-222-5006
AWP	Western-Pacific Region, Regional Administrator William C. Withycombe, 310-725-3550 15000 Aviation Boulevard Hawthorne, California 90261 Duty Officer, 310-725-3300

FAA Officials

International Area Offices

Routing Symbol	Officials
AEU	Europe, Africa, & Middle East Area Office, Director Paul Feldman, 011-322-508-2700 American Embassy, Brussels PSC 82 Box 002 APO AE 09724-1011
ALC	Latin America & Caribbean Area Office, Director Joaquin Archilla, 305-716-3300 8600 NW 36th Street Miami, FL 33166
APC*	Asia-Pacific Area Office, Director Nancy Graham, 011-65-6540-4114 American Embassy 27 Napier Road Singapore 258508

FEDERAL AVIATION ADMINISTRATION

FLIGHT PLAN 2005-2009

INCREASED SAFETY

Goal: *Achieve the lowest possible accident rate and constantly improve safety.*

Objectives:

1. Reduce the commercial airline fatal accident rate.
2. Reduce the number of fatal accidents in general aviation.
3. Reduce accidents in Alaska.
4. Reduce the risk of runway incursions.
5. Measure the safety of the United States civil aviation system with a composite index.
6. Ensure the safety of commercial space launches.
7. Enhance the safety of FAA's air traffic systems

Performance Targets:

Obj. 1 Reduce the airline fatal accident rate by 80% from the 1994-1996 baseline to a three-year rolling average rate of 0.010 per 100,000 departures by FY 2007.

Obj. 1 Reduce the three-year rolling average fatal accident rate below 0.010 by fiscal year (FY) 2009.

Obj. 2 By FY 2009, reduce the number of general aviation and nonscheduled Part 135 fatal accidents to no more than 319 (from 385, which represents the average number of fatal accidents for the baseline period of 1996-1998).

Obj. 3 By FY 2009, reduce accidents in Alaska for general aviation and all Part 135 operations from 2000-2002 average of 130 accidents per year to no more than 99 accidents per year.

As of 10/01/04

Source: APO-120
(202) 267-3220

INCREASED SAFETY Performance Targets (Continued)

Obj. 4 By FY 2009, reduce the number of Categories A and B (most serious) runway incursions to no more than 27, equivalent to a rate of 0.390 per million operations.

Obj. 5 By FY 2006, implement a single, comprehensive index that provides a meaningful measure of the safety performance of the U.S. civil aviation system.

Obj. 6 No fatalities, serious injuries, or significant property damage to the uninvolved public during licensed space launch and reentry activities.

Obj. 7 By 2009, reduce the number of Category A and B (most serious) operational errors to no more than 563, equivalent to a rate of 3.15 per million activities.

Obj. 7 Apply safety risk management to at least 30 significant changes in the NAS.

GREATER CAPACITY

Goal: *Work with local governments and airspace users to provide capacity in the United States airspace system that meets projected demand in an environmentally sound manner.*

Objectives:

1. Increase capacity to meet projected demand.
2. Increase or improve airspace capacity in the eight major metropolitan areas and corridors that most affect total system delay: For FY 2005, those areas are: New York, Philadelphia, Boston, Chicago, Washington/Baltimore, Atlanta, Los Angeles Basin, and San Francisco.
3. Increase on-time performance of scheduled carriers.
4. Address environmental issues associated with capacity enhancements.

Performance Targets:

Obj. 1 Achieve an average daily airport capacity of 104,338 arrivals and departures per day by 2009 at the Operational Evolution Plan (OEP) airports.

Obj. 1 Open as many as seven new runways, increasing the annual service volume of the 35 OEP airports by at least 1% annually, measured as a five-year moving average, through FY 2009.

Obj. 1 Sustain adjusted operational availability at 99% for the reportable facilities that support the 35 OEP airports.

Obj. 2 Achieve an average daily airport capacity for the eight major metropolitan areas at 44,428 arrivals and departures per day by 2009.

Obj. 3 Through FY 2009, achieve an 86.9% for all flights arriving at the 35 OEP airports, equal to or less than 15 minutes late due to NAS related delays.

GREATER CAPACITY Performance Targets (Continued)

Obj. 3 Beginning in FY 2005, increase number of oceanic en-route altitude change requests that are granted through the end of FY 2009 to 80%.

Obj. 4 Reduce the number of people exposed to significant noise by 1% per year through FY 2009, as measured by a three-year moving average, from the three-year average for calendar year 2000-2002.

Obj. 4 Improve aviation fuel efficiency per revenue plane-mile by 1% per year through 2009, as measured by a three-year moving average, from the three-year average for calendar year 2000-2002.

INTERNATIONAL LEADERSHIP

Goal: *increase the safety and capacity of the global civil aerospace system in an environmentally sound manner.*

Objectives:

1. Promote improved safety and regulatory oversight in cooperation with bilateral, regional, and multilateral aviation partners.
2. Promote seamless operations around the globe in cooperation with bilateral, regional, and multilateral aviation partners.

Performance Targets:

Obj. 1 Advance U.S. aviation safety leadership in developing regions by significantly increasing safety infrastructure in 10 priority countries by 2009 through implementation of model law and regulations for safety oversight, extensive technical assistance and training activity, and concluding bilateral agreements.

Obj. 1 Conclude four new or expanded bilateral agreements with current partners.

Obj. 1 Secure a yearly increase of 20% in intellectual and financial assistance for international aviation activities from the United States and international government organizations, multilateral bank, and industry.

Obj. 1 Promote the creation of four new regional aviation authorities or organizations capable of meeting globally accepted safety standards.

Obj. 2 Ensure that international environmental standards, recommended practices, and guidance material adopted by ICAO are globally and uniformly applied, reflect the best available technology that can be integrated into the fleet, provide real environmental benefit, are economically sound, and take interdependencies between environmental parameters into account.

ORGANIZATIONAL EXCELLENCE

GOAL: *Ensure the success of the FAA's mission through stronger leadership, a better-trained and safer workforce, enhanced cost-control measures, and improved decision-making based on reliable data.*

Objectives:

1. Make the organization more effective with stronger leadership, increased commitment of individual workers to fulfill organization-wide goals, and a better prepared, better trained, safer, diverse workforce.
2. Control costs while delivering quality customer service.
3. Make decisions based on reliable data to improve our overall performance and customer satisfaction.

Performance Targets:

Obj.1 Increase Employee Attitude Survey scores in the areas of management effectiveness and accountability by at least 5%.

Obj. 1 Directly relate 100% all employee performance plans to FAA strategic goals and their organization's performance plans.

Obj. 1 Reduce the time it takes to fill mission-critical positions by 20% over the FY 2003 baseline.

Obj. 2 Develop and implement a centrally managed and highly visible cost control program to lead the agency in reducing costs. Each FAA organization will contribute at least one cost reduction activity each year to its Business Plan with measurable, significant cost savings.

Obj. 2 Close out 85% of eligible cost reimbursable contracts during each fiscal year.

Obj. 3 By FY 2009, 90% of major system acquisition investments are within 10% of budget.

Obj. 3 By FY 2009, 90% of major system acquisition investments are on schedule.

ORGANIZATIONAL EXCELLENCE Performance Targets (Continued)

Obj. 3 Achieve 90% of all performance targets in the Flight Plan.

Obj. 3 Increase agency scores on the American Customer Satisfaction Index.

Obj. 3 Achieve zero cyber security events that significantly disable or degrade FAA services.



FAA MISSION

*To provide the safest, most efficient
aerospace system in the world.*

FAA VISION

*To improve continuously the safety and
efficiency of aviation, while being
responsive to our customers and
accountable to the public*

FAA VALUES

Safety is our passion.

We are world leaders in aerospace safety.

Quality is our trademark.

We serve our country, our customers, and each other.

Integrity is our character.

We do the right thing, even if no one is looking.

People are our strength.

We treat each other as we want to be treated.