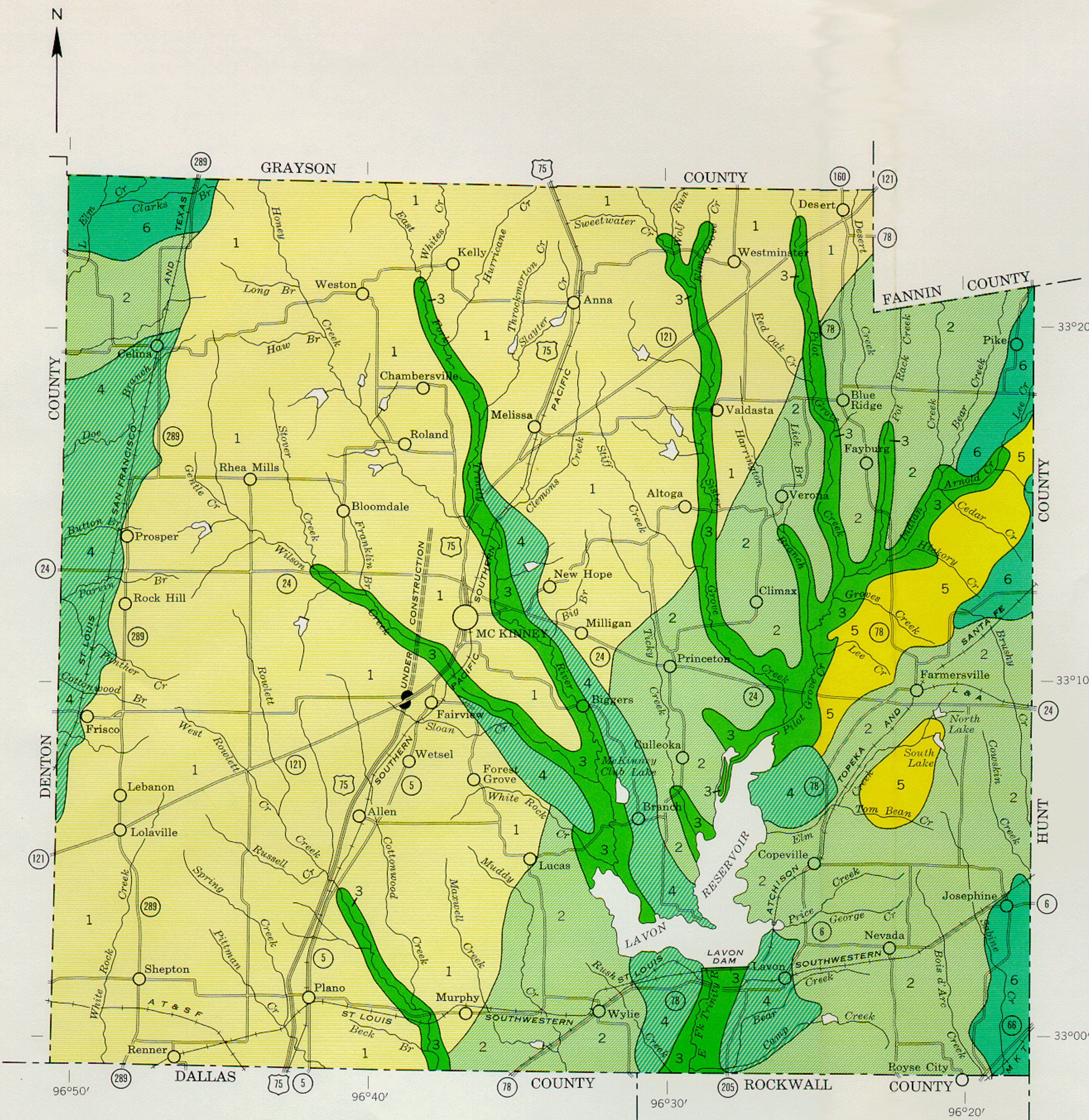


U. S. DEPARTMENT OF AGRICULTURE
 SOIL CONSERVATION SERVICE
 TEXAS AGRICULTURAL EXPERIMENT STATION

GENERAL SOIL MAP

COLLIN COUNTY, TEXAS



SOIL ASSOCIATIONS

- 1 Houston Black-Austin association: Gently sloping to sloping, clayey soils that are deep over marl and chalk; on uplands
- 2 Houston Black-Houston association: Gently sloping to sloping, clayey soils that are deep over compact clays; on uplands
- 3 Trinity-Frio association: Deep, nearly level, clayey and loamy soils on flood plains
- 4 Houston Black-Burleson association: Nearly level to gently sloping, deep, clayey soils on stream terraces
- 5 Ferris-Houston association: Sloping to strongly sloping, eroded, deep, clayey soils on uplands
- 6 Wilson-Burleson association: Nearly level to gently sloping, deep, loamy and clayey soils on uplands

July 1968