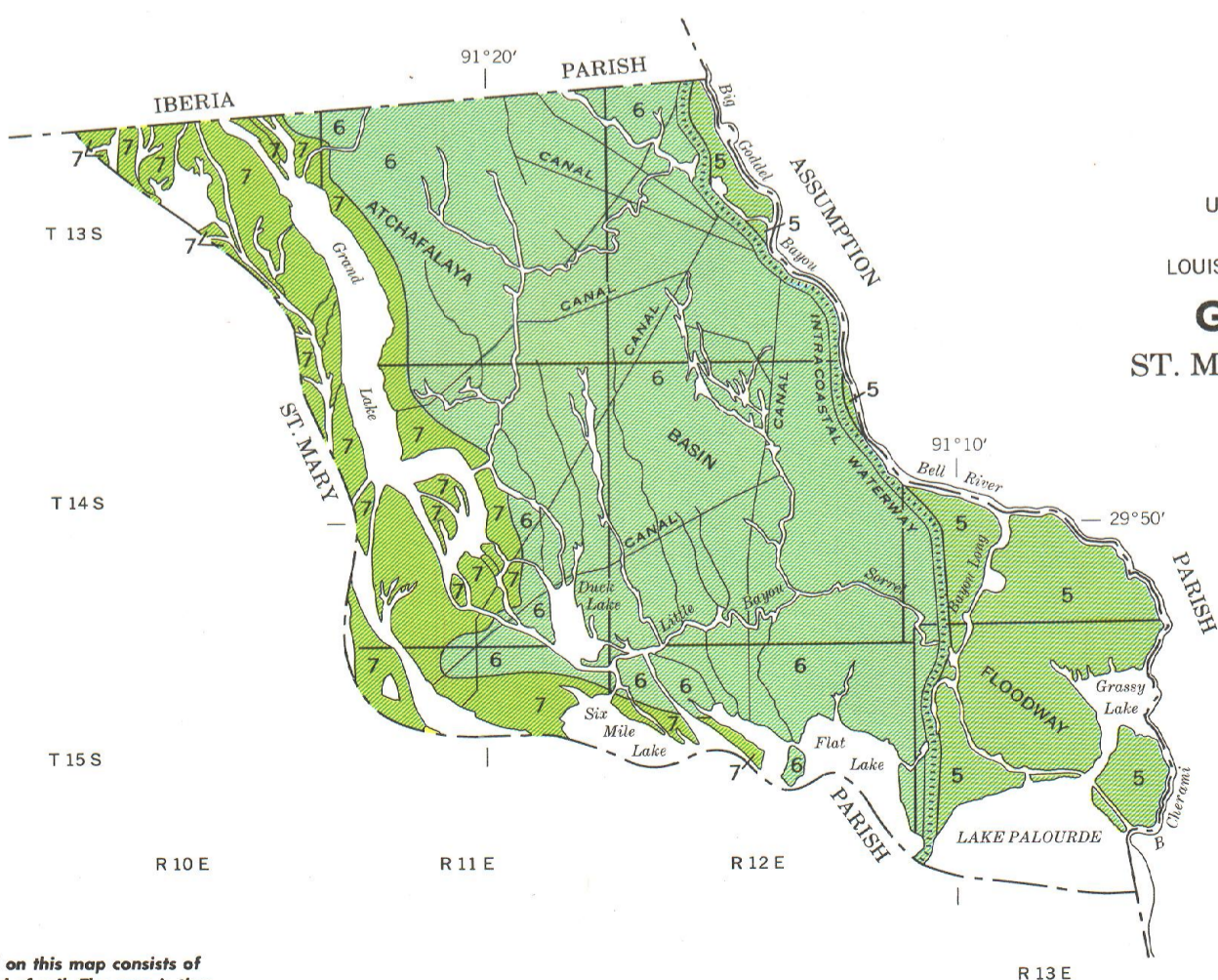
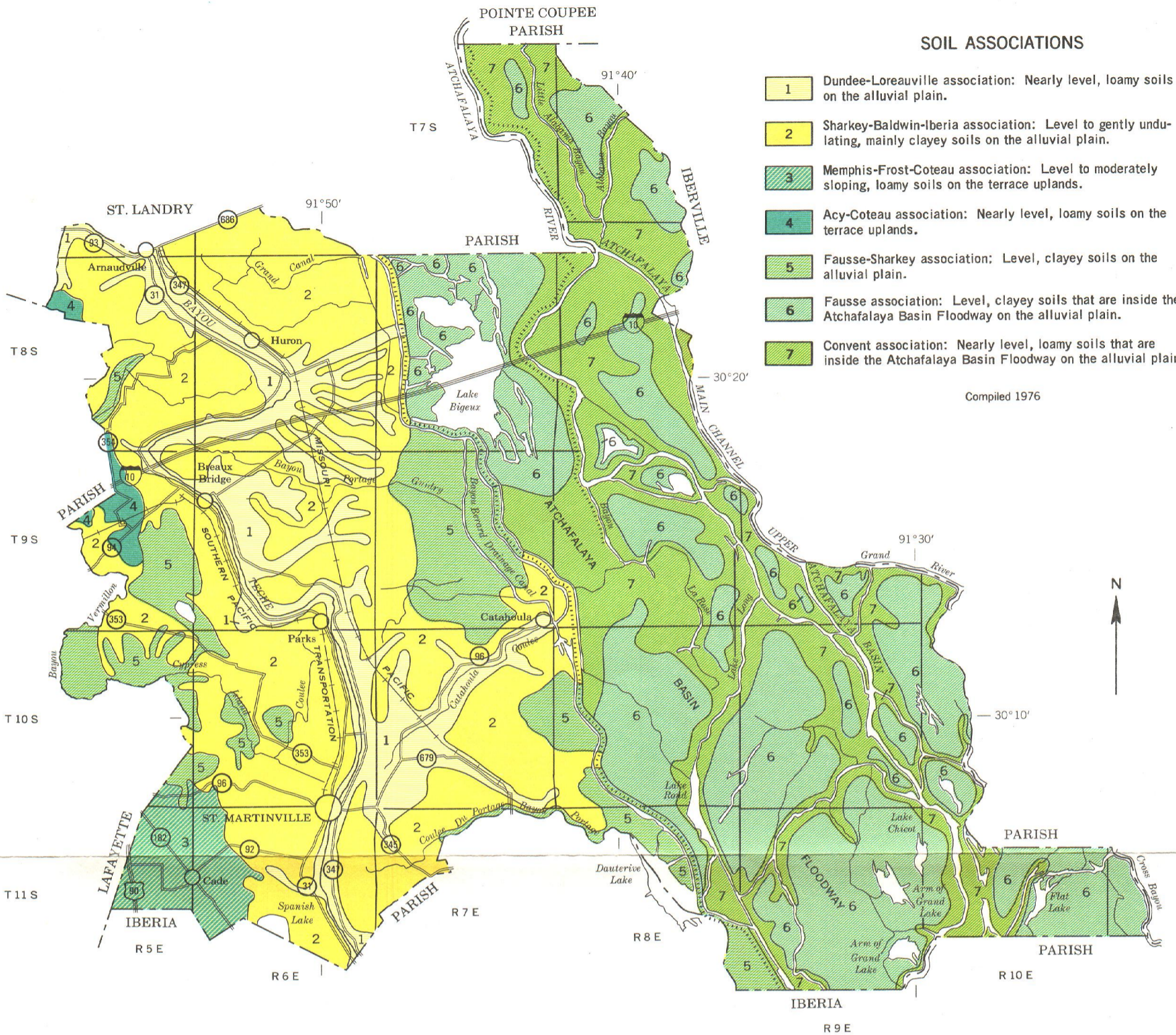


# SOIL ASSOCIATIONS

- 1 Dundee-Loreauville association: Nearly level, loamy soils on the alluvial plain.
- 2 Sharkey-Baldwin-Iberia association: Level to gently undulating, mainly clayey soils on the alluvial plain.
- 3 Memphis-Frost-Coteau association: Level to moderately sloping, loamy soils on the terrace uplands.
- 4 Acy-Coteau association: Nearly level, loamy soils on the terrace uplands.
- 5 Fausse-Sharkey association: Level, clayey soils on the alluvial plain.
- 6 Fausse association: Level, clayey soils that are inside the Atchafalaya Basin Floodway on the alluvial plain.
- 7 Convent association: Nearly level, loamy soils that are inside the Atchafalaya Basin Floodway on the alluvial plain.

Compiled 1976



U. S. DEPARTMENT OF AGRICULTURE  
 SOIL CONSERVATION SERVICE  
 LOUISIANA AGRICULTURAL EXPERIMENT STATION  
**GENERAL SOIL MAP**  
 ST. MARTIN PARISH, LOUISIANA

Scale 1:253,440  
 1 0 1 2 3 4 Miles

Each area outlined on this map consists of more than one kind of soil. The map is thus meant for general planning rather than a basis for decisions on the use of specific tracts.