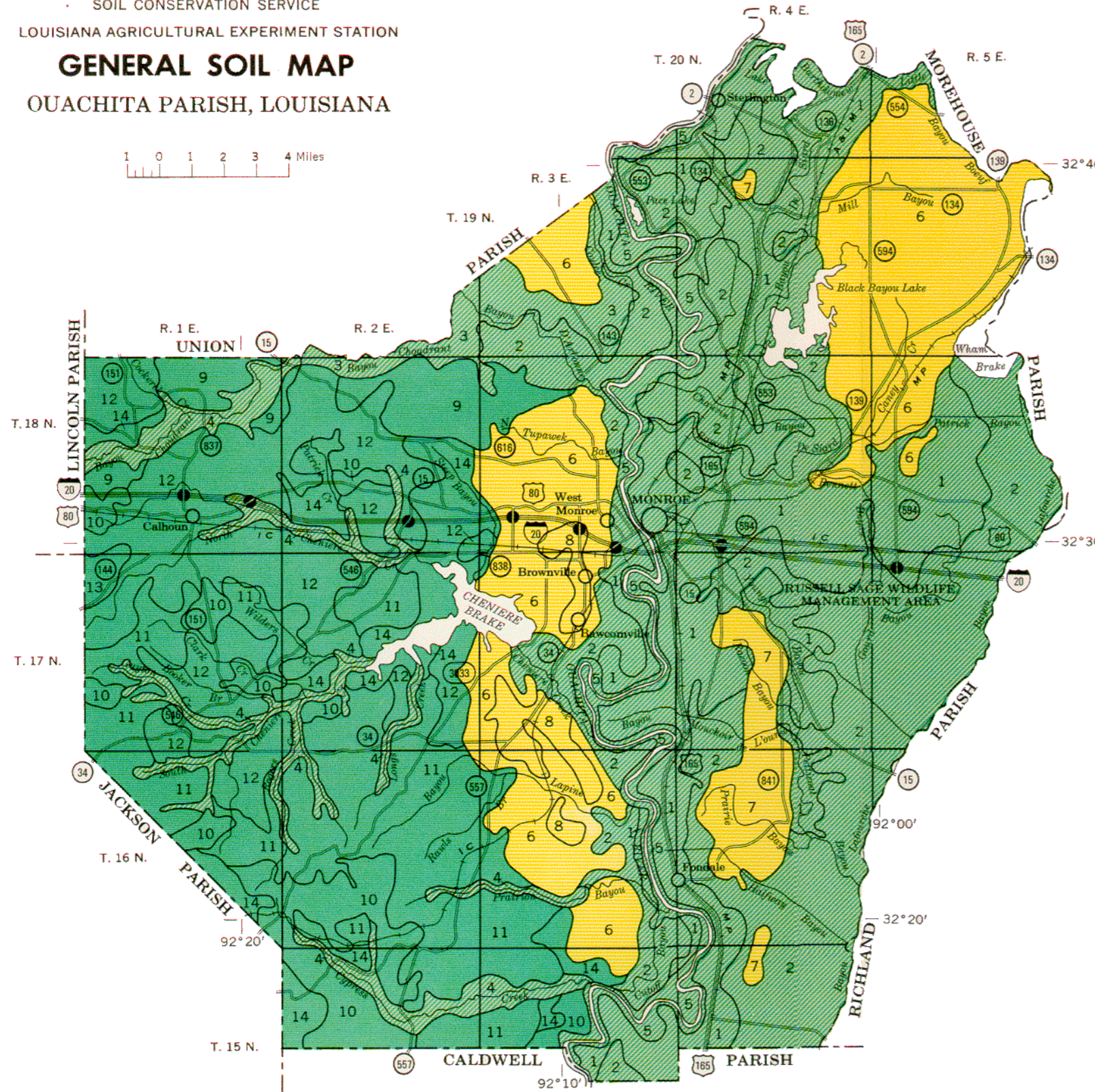
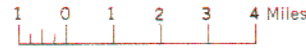


U. S. DEPARTMENT OF AGRICULTURE  
 SOIL CONSERVATION SERVICE  
 LOUISIANA AGRICULTURAL EXPERIMENT STATION  
**GENERAL SOIL MAP**  
 OUACHITA PARISH, LOUISIANA



**SOIL ASSOCIATIONS \***

MAINLY LEVEL AND NEARLY LEVEL SOILS ON BOTTOM LAND

- 1 Hebert-Sterlington-Rilla association: Level to nearly level, loamy soils on natural levees
- 2 Perry-Portland association: Level soils that have a clayey subsoil and are on broad flats
- 3 Alligator-Leaf association: Level soils that have a clayey subsoil and are subject to frequent flooding
- 4 Guyton-Rosebloom association: Level, loamy soils that are subject to frequent flooding
- 5 Barclay-Rosebloom association: Gently undulating, loamy soils that are adjacent to the Ouachita River and are subject to occasional flooding

LEVEL TO GENTLY SLOPING SOILS ON TERRACES

- 6 Frizzell-Providence-Guyton association: Level to gently sloping, loamy soils
- 7 Wrightsville-Alligator-Crowley association: Level soils that have a clayey subsoil
- 8 Waller-Guyton association: Level, loamy soils on broad flats and in depressions

UNDULATING TO STEEP SOILS ON UPLANDS OF THE COASTAL PLAIN

- 9 Kirvin-Ruston association: Strongly sloping soils that have a loamy to clayey subsoil
- 10 Cadeville-Ora association: Strongly sloping to steep soils that have a clayey or loamy subsoil
- 11 Ruston-Lucy-Alaga association: Steep soils that are loamy or sandy below the surface layer
- 12 Ruston-Lucy association: Undulating to moderately sloping soils that have a loamy subsoil
- 13 Alaga-Lucy association: Moderately sloping soils that are sandy or loamy below the surface layer
- 14 Ora-Savannah association: Nearly level to strongly sloping, loamy soils that have a fragipan

\* Texture in name of association refers to surface layer of the dominant soils unless otherwise stated.

Compiled 1971

This map is for general planning. It shows only the major soils and does not contain sufficient detail for operational planning.