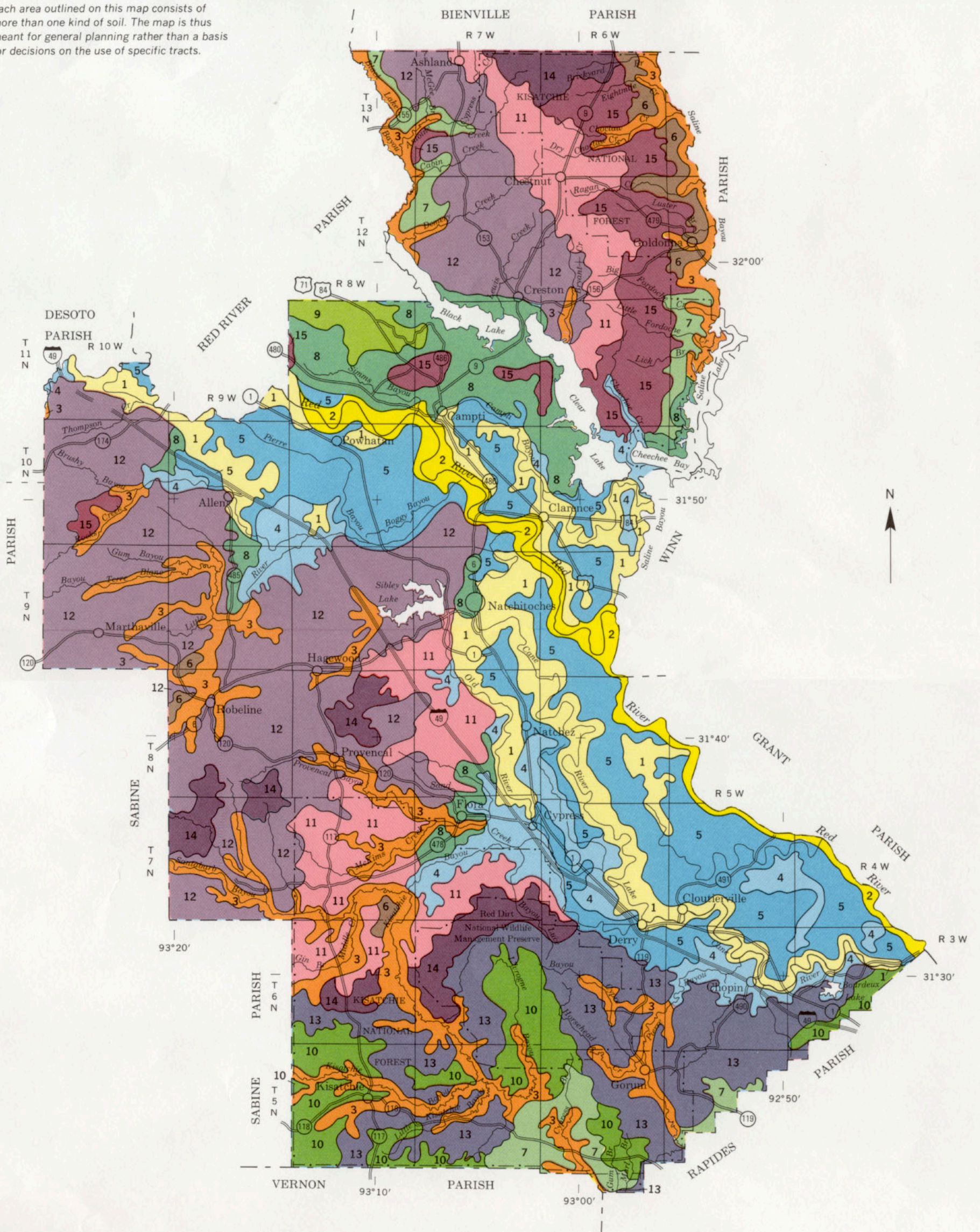


Each area outlined on this map consists of more than one kind of soil. The map is thus meant for general planning rather than a basis for decisions on the use of specific tracts.



### LEGEND

- |   |  |
|---|--|
| <p><b>1</b> Roxana-Gallion: Level, well drained soils that are loamy throughout; formed in Red River alluvium</p> <p><b>2</b> Severn: Level and nearly level, well drained soils that are loamy throughout; formed in Red River alluvium</p> <p><b>3</b> Guyton: Level, poorly drained soils that are loamy throughout; formed in local stream alluvium</p> <p><b>4</b> Moreland-Yorktown: Level, somewhat poorly drained and very poorly drained soils that are clayey throughout; formed in Red River alluvium</p> <p><b>5</b> Moreland-Latanier-Armistead: Level to gently undulating, somewhat poorly drained soils that have a clayey or loamy surface layer and a clayey or loamy subsoil; formed in Red River alluvium</p> <p><b>6</b> Cahaba-Bienville-Guyton: Level to gently sloping, well drained, somewhat excessively drained, and poorly drained soils that are loamy or sandy throughout; formed in old stream deposits</p> <p><b>7</b> Beauregard-Malbis-Guyton: Level to gently sloping, moderately well drained and poorly drained soils that are loamy throughout; formed in old stream deposits</p> | <p><b>8</b> Gore-Acadia-Wrightsville: Level to gently sloping, moderately well drained, somewhat poorly drained, and poorly drained soils that have a loamy surface layer and a clayey subsoil; formed in old stream deposits</p> <p><b>9</b> Shatta: Gently sloping, moderately well drained soils that are loamy throughout; formed in old stream deposits</p> <p><b>10</b> Anacoco-Malbis: Gently sloping, somewhat poorly drained and moderately well drained soils that have a loamy surface layer and a loamy or clayey subsoil; formed in old stream and marine deposits</p> <p><b>11</b> Bellwood-Natchitoches-Keithville: Gently sloping to strongly sloping, somewhat poorly drained, well drained, and moderately well drained soils that have a clayey or loamy surface layer and a clayey, loamy, or loamy and clayey subsoil; formed in old marine deposits</p> <p><b>12</b> Sacul-Keithville: Gently sloping to strongly sloping, moderately well drained soils that have a loamy surface layer and a clayey and loamy subsoil; formed in old marine deposits</p> <p><b>13</b> Kisatchie-Oula: Gently sloping to steep, well drained and moderately well drained soils that have a loamy surface layer and a clayey and loamy or clayey subsoil; formed in old marine deposits</p> <p><b>14</b> Betis-Briley: Gently sloping to moderately steep, somewhat excessively drained and well drained soils that have a sandy surface layer and a sandy or loamy subsoil; formed in old marine deposits</p> <p><b>15</b> Ruston-Malbis-Smithdale: Gently sloping to moderately steep, well drained and moderately well drained soils that are loamy throughout; formed in old stream deposits</p> |
|---|--|

Compiled 1987

UNITED STATES DEPARTMENT OF AGRICULTURE  
SOIL CONSERVATION SERVICE AND FOREST SERVICE  
LOUISIANA AGRICULTURAL EXPERIMENT STATION  
LOUISIANA SOIL AND WATER CONSERVATION COMMITTEE

## GENERAL SOIL MAP NATCHITOCHE PARISH, LOUISIANA

SECTIONALIZED  
TOWNSHIP

6	5	4	3	2	1
7	8	9	10	11	12
18	17	16	15	14	13
19	20	21	22	23	24
30	29	28	27	26	25
31	32	33	34	35	36

