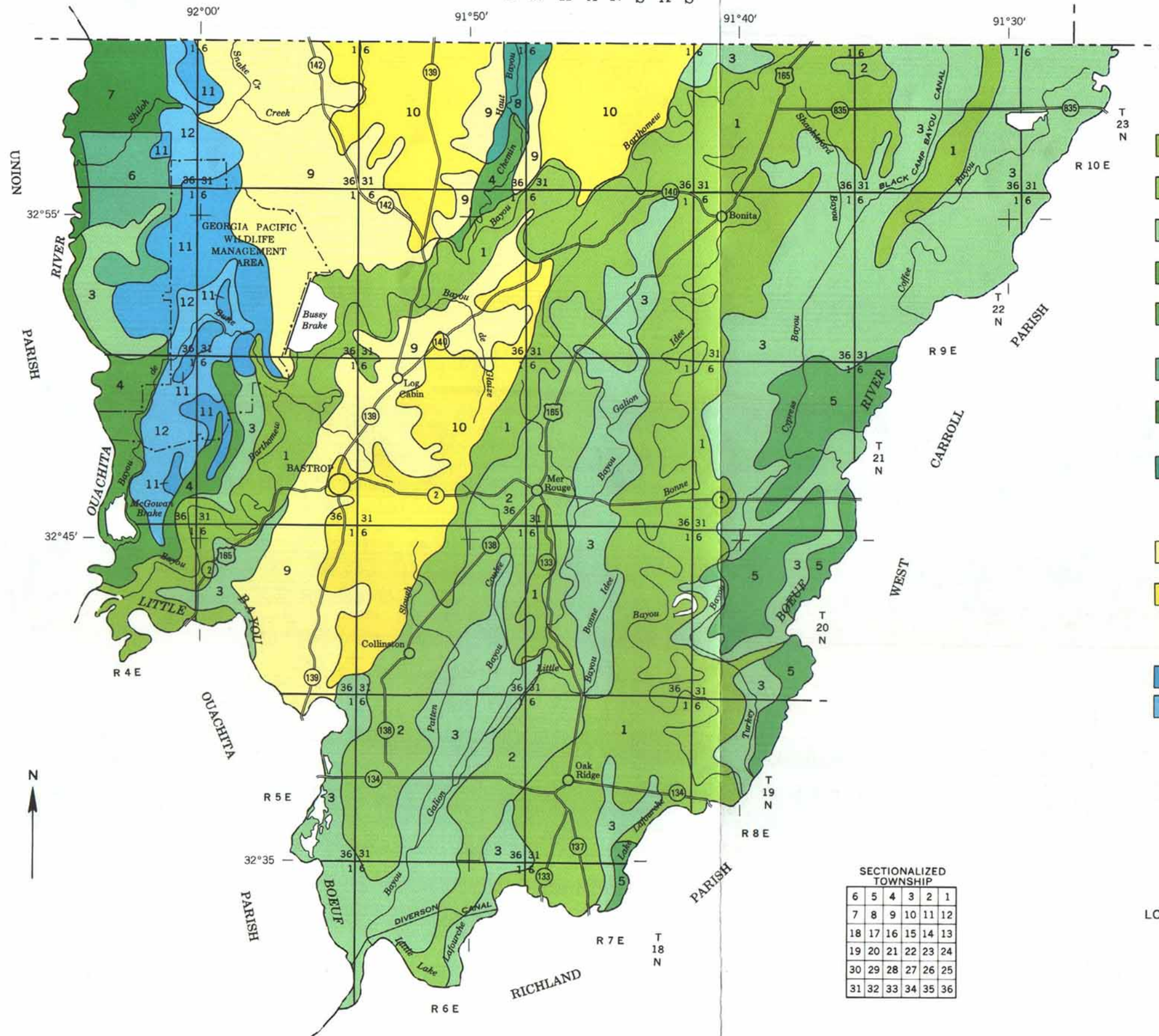


ARKANSAS



LEGEND\*

- AREAS DOMINATED BY LEVEL TO GENTLY UNDU-LATING SOILS ON FLOOD PLAINS**
- 1 Hebert-Sterlington-Rilla: Somewhat poorly drained and well drained, level to gently undulating, loamy soils
  - 2 Gallion-Mer Rouge-Hebert: Well drained to somewhat poorly drained, level to gently undulating, loamy soils
  - 3 Perry-Portland: Poorly drained and somewhat poorly drained, level to gently undulating, clayey and loamy soils
  - 4 Perry-Portland, Flooded: Poorly drained and somewhat poorly drained, level, occasionally flooded, clayey soils
  - 5 Forestdale-Idee-Goodwill: Poorly drained, somewhat poorly drained, and well drained, level and gently undulating, loamy soils
  - 6 Litro-Haggerty: Poorly drained and somewhat poorly drained, level, clayey and sandy soils
  - 7 Litro-Haggerty, Flooded: Poorly drained and somewhat poorly drained, level, frequently flooded, clayey and sandy soils
  - 8 Guyton-Cascilla, Flooded: Poorly drained and well drained, level, frequently flooded, loamy soils
- AREAS DOMINATED BY LEVEL TO MODERATLEY SLOPING SOILS ON TERRACE UPLANDS**
- 9 Frizzell-Libuse-Debutte: Somewhat poorly drained and moderately well drained, level to moderately sloping, loamy soils
  - 10 Bussy-Tillou-Guyton: Moderately well drained to poorly drained, moderately sloping to level, loamy soils
- AREAS DOMINATED BY LEVEL SOILS ON LOW STREAM TERRACES**
- 11 Groom-Wrightsville: Poorly drained, level, loamy soils
  - 12 Groom, Flooded: Poorly drained, level, occasionally flooded, loamy soils

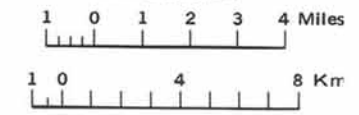
\*The Texture noted in the descriptive headings applies to the surface layer of the major soils

Compiled 1983

UNITED STATES DEPARTMENT OF AGRICULTURE  
SOIL CONSERVATION SERVICE  
LOUISIANA AGRICULTURAL EXPERIMENT STATION  
LOUISIANA STATE SOIL AND WATER CONSERVATION COMMITTEE

**GENERAL SOIL MAP**  
**MOREHOUSE PARISH**  
**LOUISIANA**

Scale 1:253,440



SECTIONALIZED TOWNSHIP

6	5	4	3	2	1
7	8	9	10	11	12
18	17	16	15	14	13
19	20	21	22	23	24
30	29	28	27	26	25
31	32	33	34	35	36

Each area outlined on this map consists of more than one kind of soil. The map is thus meant for general planning rather than a basis for decisions on the use of specific tracts.