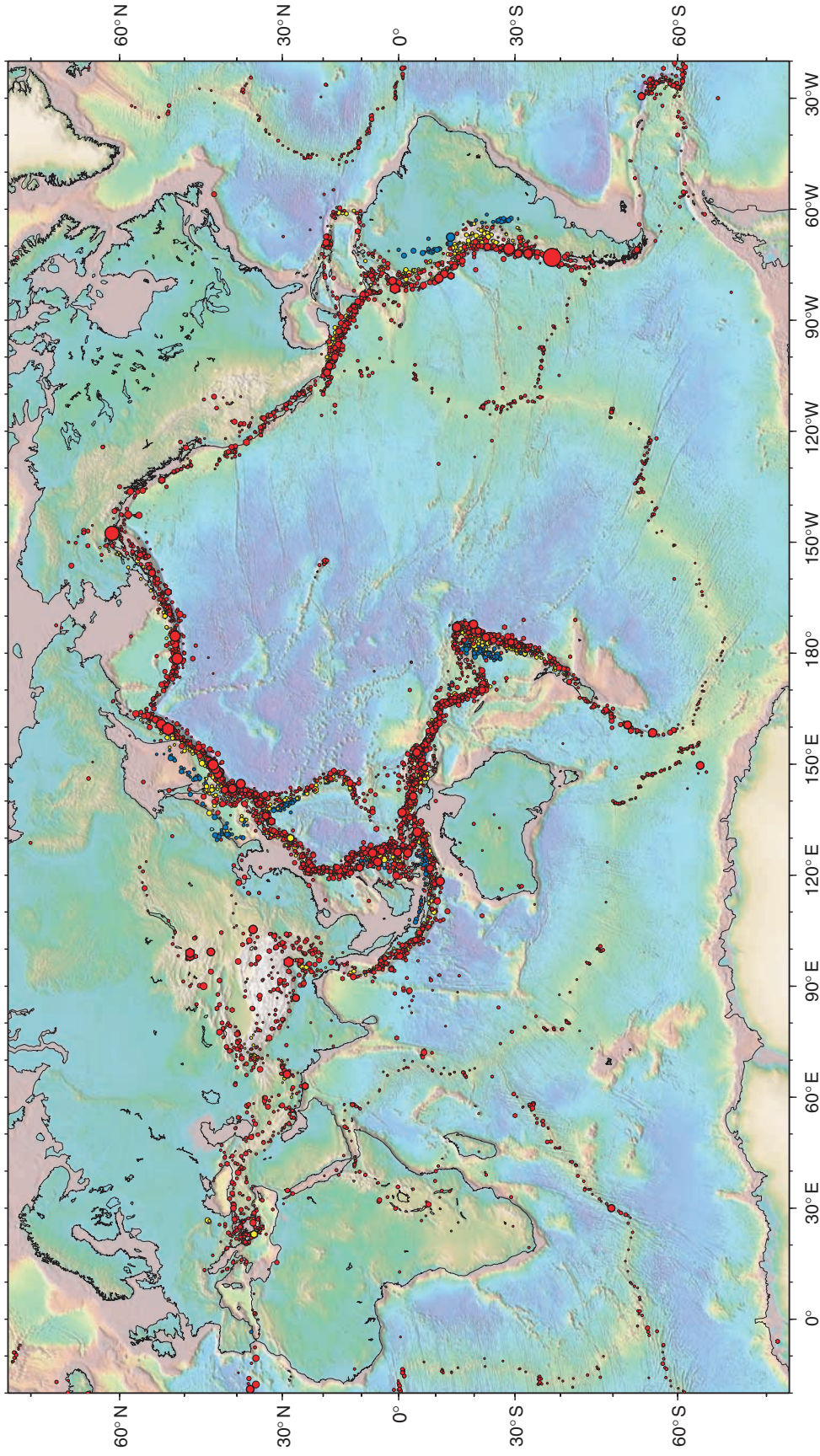


Centennial Earthquake Catalog (1900–1999)



Color Plate 15 Global earthquake locations from 1900 to 1999 taken from the centennial catalog. Bathymetry/topography are from the database of Smith and Sandwell (1997). Earthquakes relocated in this study are shown by filled circles and unrelocated earthquakes by filled hexagons. Symbol fill is color-coded according to focal depth h : red = shallow events ($h < 70$ km); yellow = intermediate ($70 \leq h < 350$ km); and blue = deep ($h \geq 350$ km). A thick symbol outline is used for events with magnitudes greater or equal than 8.0.