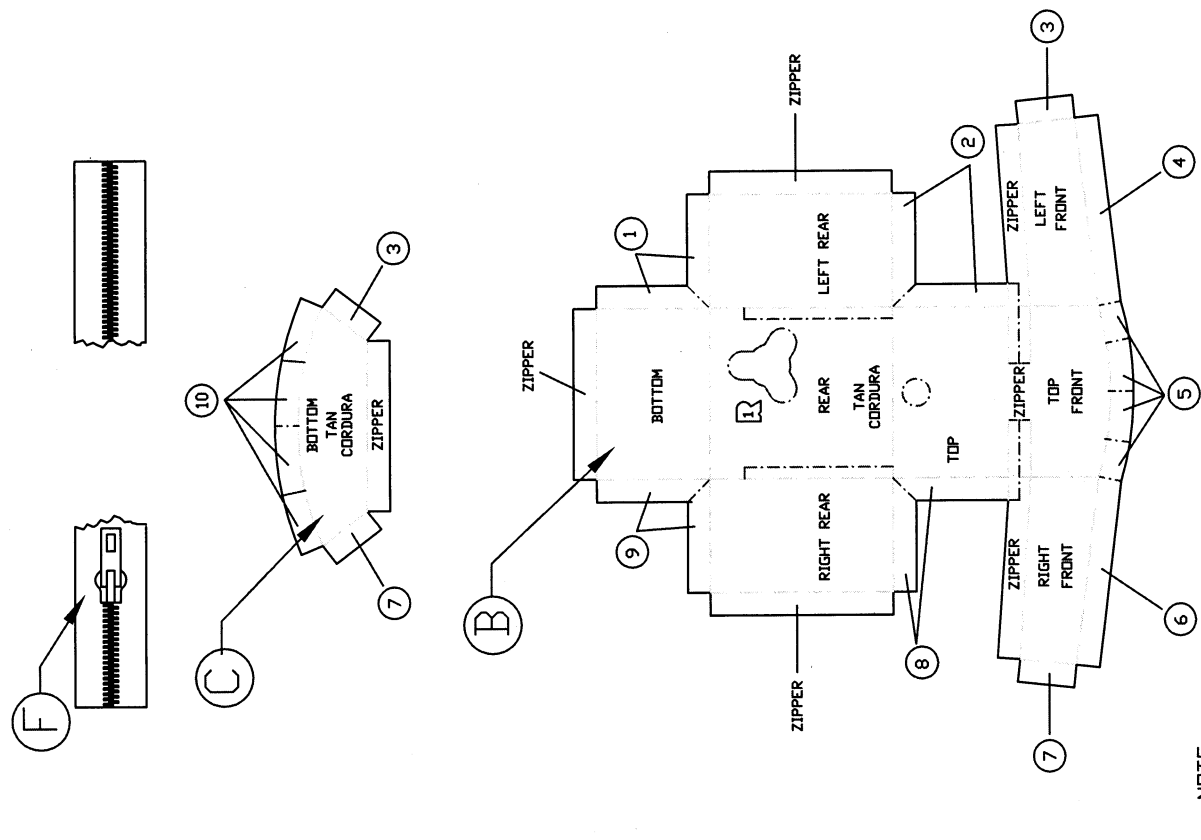
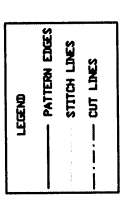


REV. #	ZONE	DESCRIPTION	DATE	BY
1	GLOBAL	ADD CUT LINES, HOLES, AND VELCRO/EDIT TEXT	5/4/98	J. POLAND
2	GLOBAL	CHANGED ITEM CALLOUT TO LETTERS. ADDED LEGEND.	4/30/01	J. POLAND
3	HARDWARE	ADDED ITEM L	5/8/01	M. ARTIS
3	O-16, P-16	ELIMINATED VELCRO PIECES AND UPDATED ZIPPER FROM DWG. TIUAF313-34	1/10/05	B. SECK

ALIGN THE TOP OF THE STIFFENING CLOTH (TIUAF313) ALONG THIS LINE AND SEW IT TO THE INSIDE OF THE FRONT OVERLAY FABRIC PATTERN (TIUAF314). ALIGN THE TOP OF THE FRONT VELCRO PATCH (TIUAF310) ALONG THIS LINE AND SEW IT TO THE OUTSIDE SURFACE OF THE FRONT OVERLAY FABRIC PATTERN (TIUAF314).



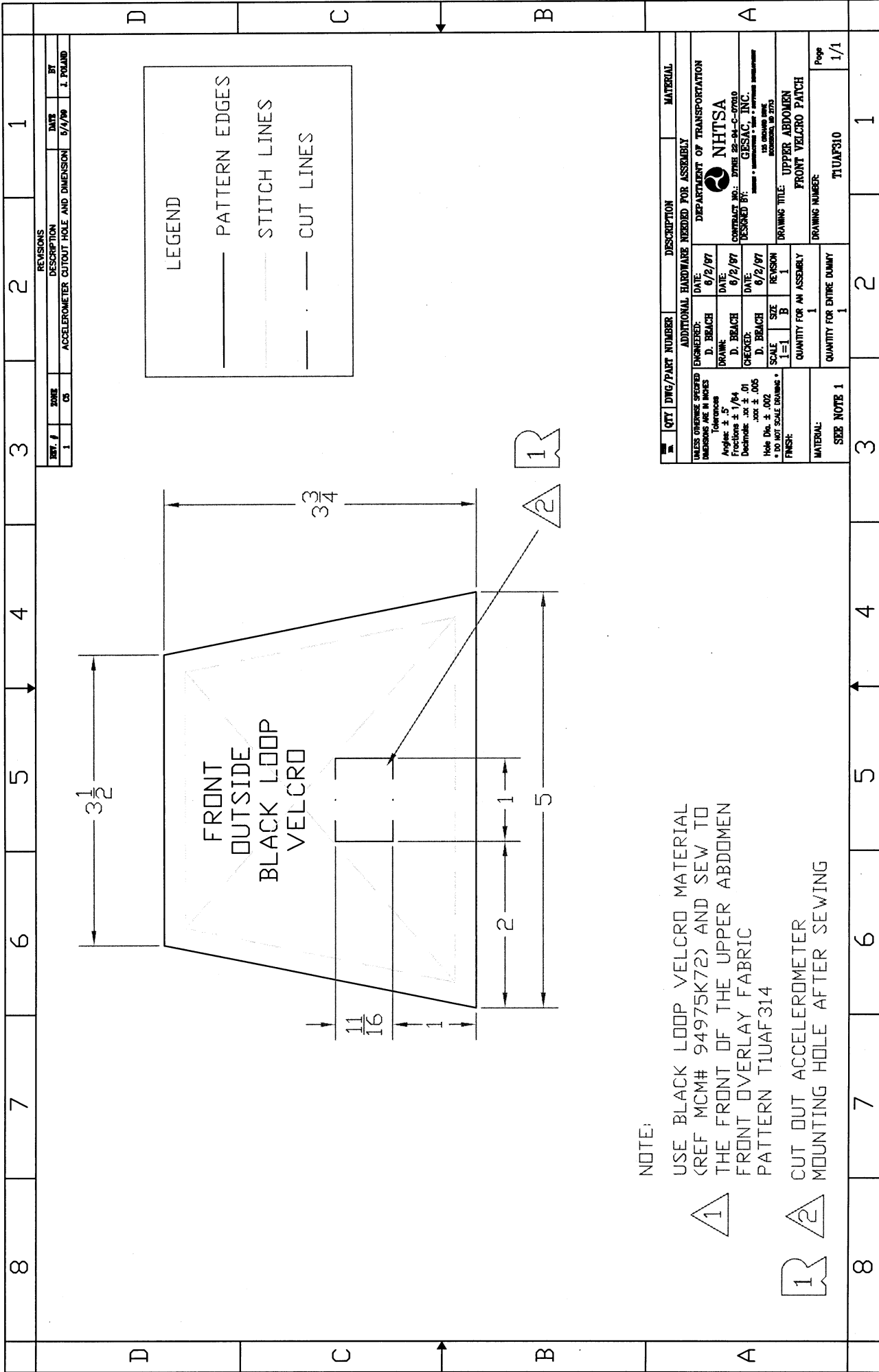
NOTE:
 △ THE NUMBERING SCHEME IS USED TO INDICATE WHICH PATTERN EDGES ARE SEWN TOGETHER TO CREATE THE UPPER ABDOMEN BAG.
 ▲ ADD HOLES AFTER SEWING

QTY	DWG/PART NUMBER	DESCRIPTION	MATERIAL
1	TIUAF301	SEWING ASSEMBLY	SEE DWG.
1	TIUAF315	ZIPPER	SEE DWG.
1	TIUAF314	FRONT OVERLAY FAB. PATTERN	CORDURA NYLON
1	TIUAF313	FRONT STIFFENING CLOTH	NYLON STIFF. CLOTH
1	TIUAF312	BOTTOM FABRIC PATTERN	CORDURA NYLON
1	TIUAF311	TOP/SIDE/REAR FABRIC PATTERN	CORDURA NYLON
1	TIUAF310	FRONT VELCRO PATCH	BLACK LOOP VELCRO

UNLESS OTHERWISE SPECIFIED		ADDITIONAL HARDWARE NEEDED FOR ASSEMBLY	
IMPERIAL UNITS	INCHES	ENGINEERED:	J. FULLERTON
Tolerances		DATE:	5/5/98
Angles:	± .5	DRAWN:	M. ARTIS
Fractions:	± 1/64	CHECKED:	M. ARTIS
Decimals:	.xx ± .01	DATE:	5/20/97
Hole Dia.:	± .002	DATE:	5/20/97
* DO NOT SCALE DRAWING *		SCALE:	1=1
FINISH:		SIZE:	E
QUANTITY FOR AN ASSEMBLY:		REVISION:	3
1		DRAWING TITLE: UPPER ABDOMEN BAG-SEWING ASSEMBLY	
QUANTITY FOR ENTIRE DUMMY:		DRAWING NUMBER: TIUAF300	
1		Page 1/1	

DEPARTMENT OF TRANSPORTATION
 NHTSA
 CONTRACT NO.: DTMBL 92-94-C-07010
 DESIGNED BY: GESAC, INC.
 25 BRADLEY AVE.
 ROCKFORD, IL 61153

10	9	8	7	6	5	4	3	2	1																																																																																																									
H	G	F	E	D	C	B	A																																																																																																											
<table border="1"> <tr> <td>REV. #</td> <td>ZONE</td> <td>DESCRIPTION</td> <td>DATE</td> <td>BY</td> </tr> <tr> <td>1</td> <td>GLOBAL</td> <td>CHANGED ITEM CALLOUTS TO LETTERS</td> <td>5/8/01</td> <td>M. ARTIS</td> </tr> </table>										REV. #	ZONE	DESCRIPTION	DATE	BY	1	GLOBAL	CHANGED ITEM CALLOUTS TO LETTERS	5/8/01	M. ARTIS																																																																																															
REV. #	ZONE	DESCRIPTION	DATE	BY																																																																																																														
1	GLOBAL	CHANGED ITEM CALLOUTS TO LETTERS	5/8/01	M. ARTIS																																																																																																														
<p>NOTES:</p> <p>FABRIC: CORDURA NYLON (TAN) ZIPPER: STIFFENED NYLON (WHITE) YKK 9C-DFL (DIRECTION IS NOT IMPORTANT)</p> <p>THIS ITEM WILL BE SUBJECTED TO EXTREME ABUSE. THE STITCHES MUST BE CONSISTENT AND SECURE. THE BAG IS STITCHED WITH KEVLAR THREAD. (MCM# 8800R81)</p> <p>SECURE GROMMETS TO FLAPS OF COMPLETED ASSEMBLY.</p>																																																																																																																		
<table border="1"> <tr> <td>B</td> <td>2</td> <td>MCM# 9804K24</td> <td>93/8" GROMMET</td> <td>BRASS</td> </tr> <tr> <td>A</td> <td>4</td> <td>MCM# 9804K22</td> <td>91/4" GROMMET</td> <td>BRASS</td> </tr> <tr> <td>QTY</td> <td colspan="2">DWG/PART NUMBER</td> <td>DESCRIPTION</td> <td>MATERIAL</td> </tr> <tr> <td colspan="5">ADDITIONAL HARDWARE NEEDED FOR ASSEMBLY</td> </tr> <tr> <td colspan="2">UNLESS OTHERWISE SPECIFIED</td> <td>ENGINEERED:</td> <td>DATE:</td> <td>DEPARTMENT OF TRANSPORTATION</td> </tr> <tr> <td colspan="2">DIMENSIONS ARE IN INCHES</td> <td>J. FULLERTON</td> <td>02/19/97</td> <td>NHTSA</td> </tr> <tr> <td colspan="2">Tolerances</td> <td>DRAWN:</td> <td>DATE:</td> <td>CONTRACT NO.: DTRB 22-94-C-07010</td> </tr> <tr> <td colspan="2">Angles: ± .5°</td> <td>J. FULLERTON</td> <td>02/19/97</td> <td>DESIGNED BY: GESAC, INC.</td> </tr> <tr> <td colspan="2">Fractions: ± 1/64</td> <td>CHECKED:</td> <td>DATE:</td> <td>125 ORANGE BLVD</td> </tr> <tr> <td colspan="2">Decimals: .xx ± .01</td> <td>J. DRUMMOND</td> <td>05/04/01</td> <td>ROCKSBORO, NC 27753</td> </tr> <tr> <td colspan="2">Hole Dia: ± .002</td> <td>SCALE</td> <td>SIZE</td> <td>REVISION</td> </tr> <tr> <td colspan="2">* DO NOT SCALE DRAWING *</td> <td>1=1</td> <td>C</td> <td>1</td> </tr> <tr> <td colspan="2">FINISH:</td> <td colspan="3">DRAWING TITLE: UPPER ABDOMEN SEWING ASSEMBLY</td> </tr> <tr> <td colspan="2">MATERIAL:</td> <td colspan="3">QUANTITY FOR AN ASSEMBLY</td> </tr> <tr> <td colspan="2"></td> <td colspan="3">1</td> </tr> <tr> <td colspan="2"></td> <td colspan="3">QUANTITY FOR ENTIRE DUMMY</td> </tr> <tr> <td colspan="2"></td> <td colspan="3">1</td> </tr> <tr> <td colspan="2"></td> <td colspan="3">DRAWING NUMBER:</td> </tr> <tr> <td colspan="2"></td> <td colspan="3">TUAF301</td> </tr> <tr> <td colspan="2"></td> <td colspan="3">Page</td> </tr> <tr> <td colspan="2"></td> <td colspan="3">1/1</td> </tr> </table>										B	2	MCM# 9804K24	93/8" GROMMET	BRASS	A	4	MCM# 9804K22	91/4" GROMMET	BRASS	QTY	DWG/PART NUMBER		DESCRIPTION	MATERIAL	ADDITIONAL HARDWARE NEEDED FOR ASSEMBLY					UNLESS OTHERWISE SPECIFIED		ENGINEERED:	DATE:	DEPARTMENT OF TRANSPORTATION	DIMENSIONS ARE IN INCHES		J. FULLERTON	02/19/97	NHTSA	Tolerances		DRAWN:	DATE:	CONTRACT NO.: DTRB 22-94-C-07010	Angles: ± .5°		J. FULLERTON	02/19/97	DESIGNED BY: GESAC, INC.	Fractions: ± 1/64		CHECKED:	DATE:	125 ORANGE BLVD	Decimals: .xx ± .01		J. DRUMMOND	05/04/01	ROCKSBORO, NC 27753	Hole Dia: ± .002		SCALE	SIZE	REVISION	* DO NOT SCALE DRAWING *		1=1	C	1	FINISH:		DRAWING TITLE: UPPER ABDOMEN SEWING ASSEMBLY			MATERIAL:		QUANTITY FOR AN ASSEMBLY					1					QUANTITY FOR ENTIRE DUMMY					1					DRAWING NUMBER:					TUAF301					Page					1/1		
B	2	MCM# 9804K24	93/8" GROMMET	BRASS																																																																																																														
A	4	MCM# 9804K22	91/4" GROMMET	BRASS																																																																																																														
QTY	DWG/PART NUMBER		DESCRIPTION	MATERIAL																																																																																																														
ADDITIONAL HARDWARE NEEDED FOR ASSEMBLY																																																																																																																		
UNLESS OTHERWISE SPECIFIED		ENGINEERED:	DATE:	DEPARTMENT OF TRANSPORTATION																																																																																																														
DIMENSIONS ARE IN INCHES		J. FULLERTON	02/19/97	NHTSA																																																																																																														
Tolerances		DRAWN:	DATE:	CONTRACT NO.: DTRB 22-94-C-07010																																																																																																														
Angles: ± .5°		J. FULLERTON	02/19/97	DESIGNED BY: GESAC, INC.																																																																																																														
Fractions: ± 1/64		CHECKED:	DATE:	125 ORANGE BLVD																																																																																																														
Decimals: .xx ± .01		J. DRUMMOND	05/04/01	ROCKSBORO, NC 27753																																																																																																														
Hole Dia: ± .002		SCALE	SIZE	REVISION																																																																																																														
* DO NOT SCALE DRAWING *		1=1	C	1																																																																																																														
FINISH:		DRAWING TITLE: UPPER ABDOMEN SEWING ASSEMBLY																																																																																																																
MATERIAL:		QUANTITY FOR AN ASSEMBLY																																																																																																																
		1																																																																																																																
		QUANTITY FOR ENTIRE DUMMY																																																																																																																
		1																																																																																																																
		DRAWING NUMBER:																																																																																																																
		TUAF301																																																																																																																
		Page																																																																																																																
		1/1																																																																																																																
10	9	8	7	6	5	4	3	2	1																																																																																																									
H	G	F	E	D	C	B	A																																																																																																											



NOTE:

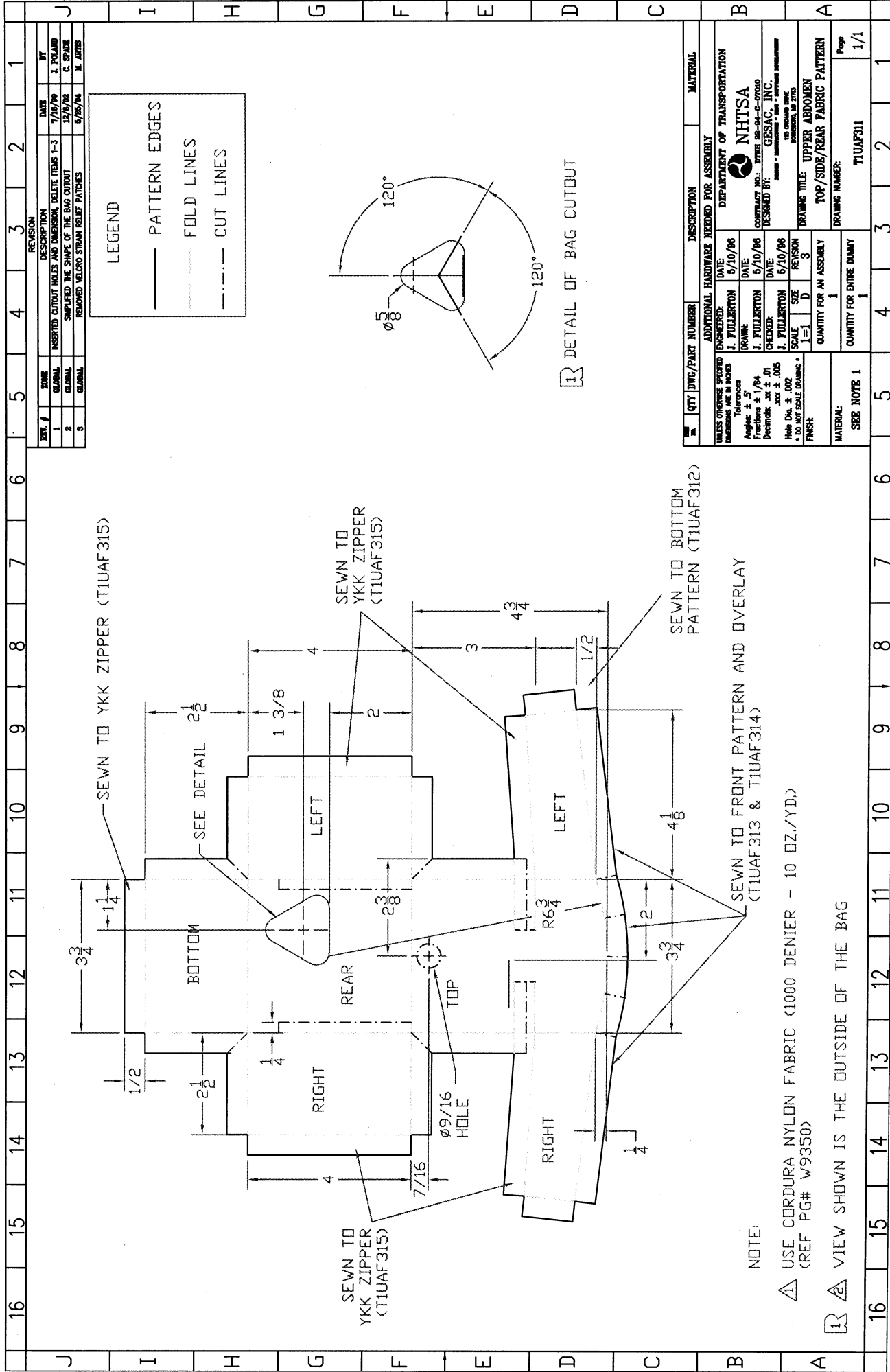
USE BLACK LOOP VELCRO MATERIAL
 (REF MCM# 94975K72) AND SEW TO
 THE FRONT OF THE UPPER ABDOMEN
 FRONT OVERLAY FABRIC
 PATTERN T1UAF314

CUT OUT ACCELEROMETER
 MOUNTING HOLE AFTER SEWING

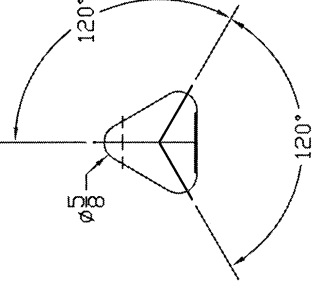


REVISIONS		DATE	BY
REV. #	DESCRIPTION		
1	ACCELEROMETER CUTOFF HOLE AND DIMENSION	6/2/97	J. POLAND

QTY	DRG/PART NUMBER	DESCRIPTION	MATERIAL
UNLESS OTHERWISE SPECIFIED DIMENSIONS ARE IN INCHES			
Tolerances			
Angle:	± .5°		
Fractions:	± 1/64		
Decimals:	.xxx ± .005		
Hole Dia.:	± .002		
* EXCEPT SCALE DRAWINGS *			
FINISH:			
UNLESS OTHERWISE SPECIFIED			
ADDITIONAL HARDWARE NEEDED FOR ASSEMBLY			
ENGINEERED:	D. BRACE	DATE: 6/2/97	DEPARTMENT OF TRANSPORTATION
DRAWN:	D. BRACE	DATE: 6/2/97	NHTSA
CHECKED:	D. BRACE	DATE: 6/2/97	CONTRACT NO.: DTMB 95-CA-07030
SCALE:	1=1		DESIGNED BY: GIBSTAC, INC.
SIZE:	B		125 ORANGE AVE.
REVISION:	1		ROCKFORD, IL 61173
DRAWING TITLE: UPPER ABDOMEN			
FRONT VELCRO PATCH			
DRAWING NUMBER:			T1UAF310
QUANTITY FOR AN ASSEMBLY:			1
QUANTITY FOR ENTIRE DUMMY:			1
SEE NOTE 1			
MATERIAL:			
PAGE			1/1



REV. #	ZONE	DESCRIPTION	DATE	BY
1	GLOBAL	INSERTED CUTOUT HOLES AND DIMENSION, DELETE ITEMS 1-3	7/10/96	J. POLLARD
2	GLOBAL	SIMPLIFIED THE SHAPE OF THE BAG CUTOUT	12/9/96	C. SPAN
3	GLOBAL	REMOVED VELCRO STRAIN RELIEF PATCHES	5/26/94	M. JAMES



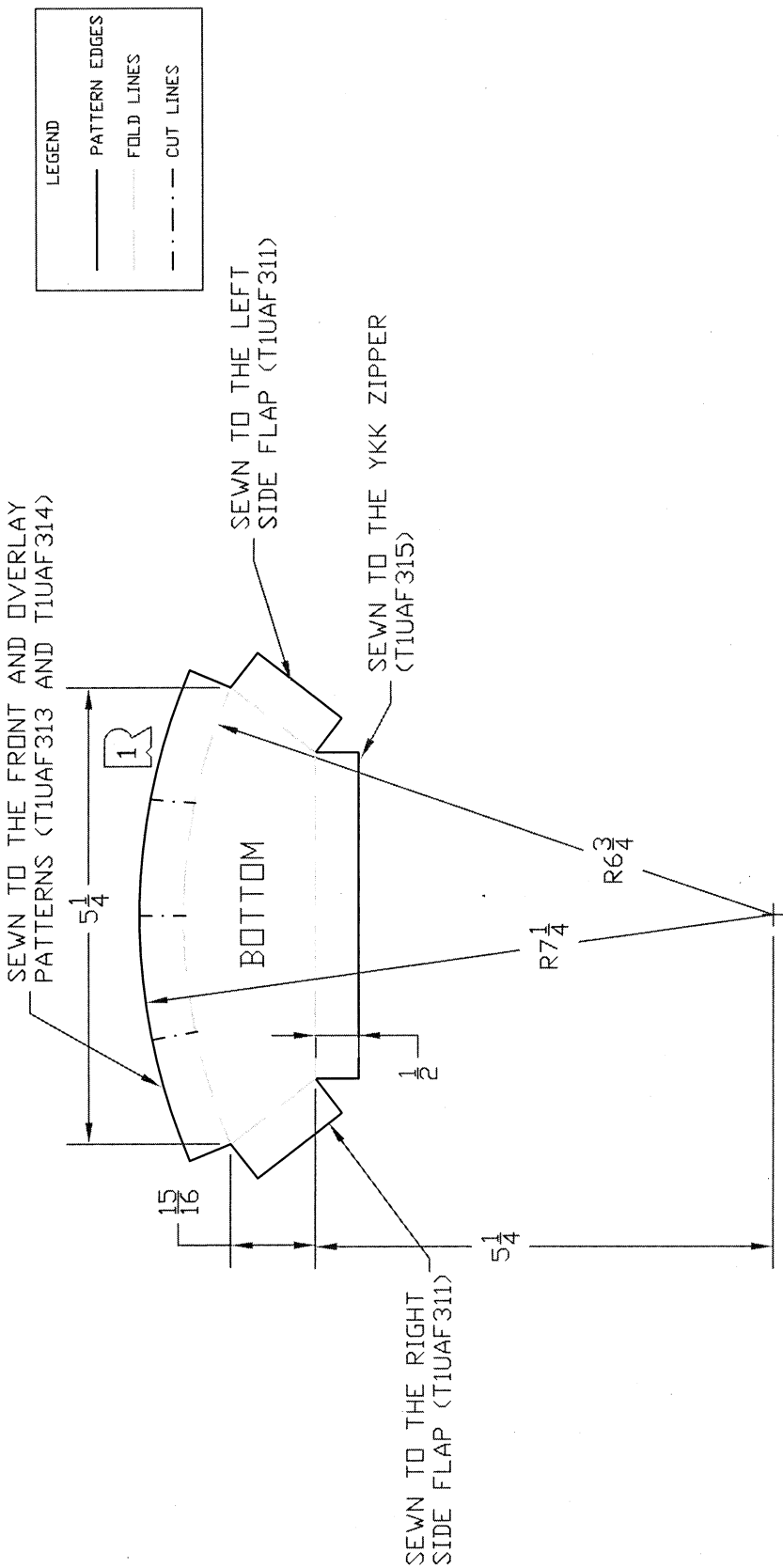
NOTE:
 USE CORDURA NYLON FABRIC (1000 DENIER - 10 OZ./YD.)
 (REF PG# W9350)

VIEW SHOWN IS THE OUTSIDE OF THE BAG

QTY	DATE/PART NUMBER	DESCRIPTION	MATERIAL
		ADDITIONAL HARDWARE NEEDED FOR ASSEMBLY	
	DATE: 9/10/96	DEPARTMENT OF TRANSPORTATION	
	DRAWN: J. FULLERTON	NHTSA	
	CHECKED: J. FULLERTON	CONTRACT NO.: DTMB 85-94-C-0700	
	DATE: 5/10/96	DESIGNED BY: GESAC, INC.	
	DATE: 5/10/96	FOR: U.S. DEPARTMENT OF TRANSPORTATION	
	SCALE: 1=1 D		
	SIZE: 3		
	REVISION: 3		
	QUANTITY FOR AN ASSEMBLY: 1		
	QUANTITY FOR ENTIRE DUMMY: 1		
	TRACING TITLE: UPPER ARBOMEN		
	TOP/SIDE/REAR FABRIC PATTERN		
	DRAWING NUMBER: T1UAF311		
	Page: 1/1		

10	9	8	7	6	5	4	3	2	1
H	G	F	E	D	C	B	A		

REV. #	ZONE	REVISION DESCRIPTION	DATE	BY
1	P6/7	CUT LINES ADDED	5/4/98	J. POLAND



QTY	DWG/PART NUMBER	DESCRIPTION	MATERIAL
		ADDITIONAL HARDWARE NEEDED FOR ASSEMBLY	
	ENGINEERED: J. FULLERTON	DATE: 4/1/96	DEPARTMENT OF TRANSPORTATION
	DRAWN: J. FULLERTON	DATE: 4/1/96	NHTSA
	CHECKED: J. FULLERTON	DATE: 4/1/96	CONTRACT NO.: DTRM 22-94-C-07010
			DESIGNED BY: GESAC, INC.
			125 ORCHARD DRIVE BOWLING GREEN, OH 43015
	SCALE: 1=1	SIZE: C	DRAWING TITLE: UPPER ABDOMEN
	QUANTITY FOR AN ASSEMBLY: 1	REVISION: 1	BOTTOM FABRIC PATTERN
	QUANTITY FOR ENTIRE DUMMY: 1		DRAWING NUMBER: T1UAF312
			Page: 1/1

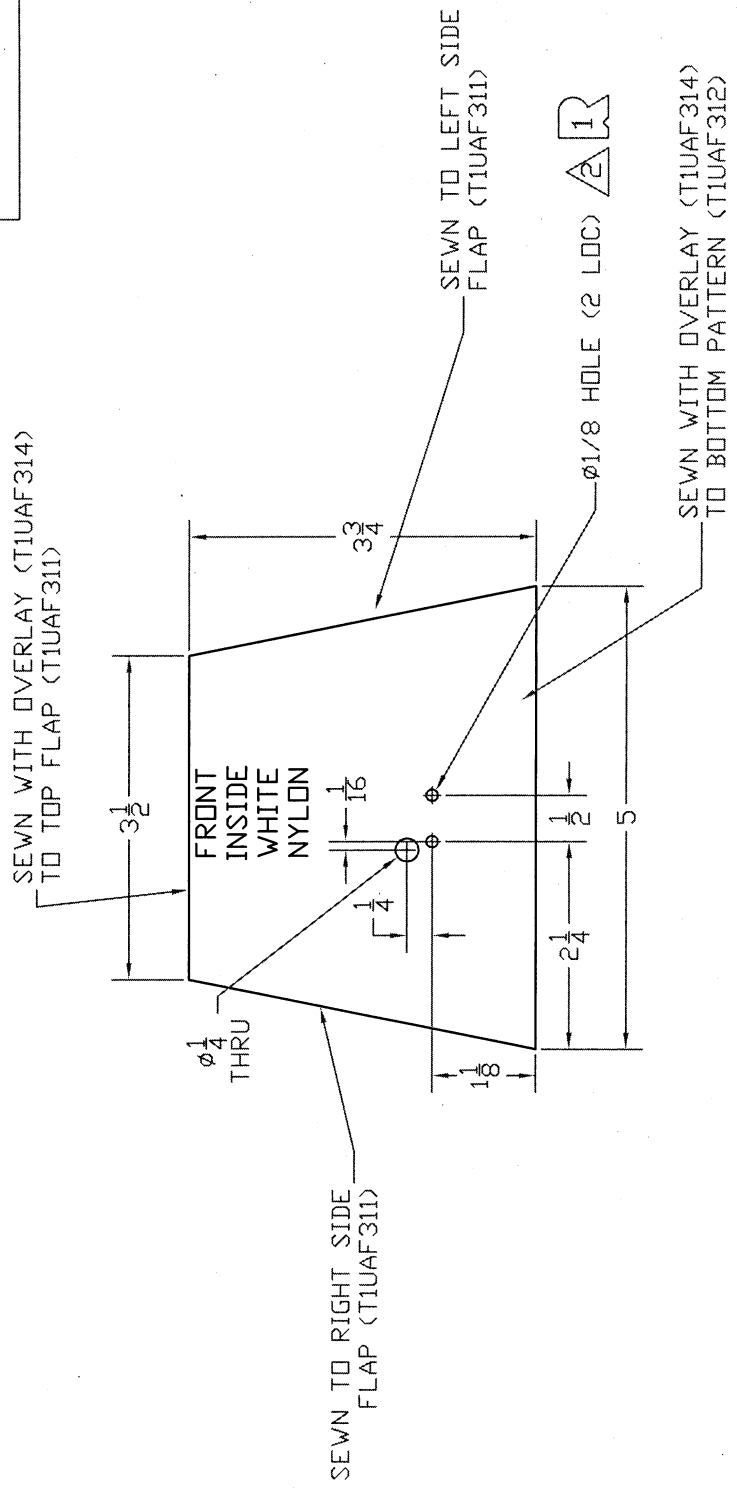
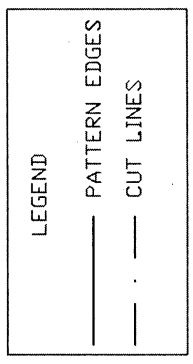
NOTE:

USE CORDURA NYLON FABRIC (1000 DENIER - 10 OZ./YD.)

(REF PG# W9350)

10	9	8	7	6	5	4	3	2	1	
H	G	F	E	D	C	B	A			

REV. #	ZONE	DESCRIPTION	DATE	BY
1	DB	ADDED ACCELEROMETER MOUNTING HOLES	5/4/98	J. POLAND
2	PT	ADDED DIA. 1/4 THRU	5/25/04	M. ARTIS



QTY	DWG/PART NUMBER	DESCRIPTION	MATERIAL
		ADDITIONAL HARDWARE NEEDED FOR ASSEMBLY	
		ENGINEERED: M. ARTIS	
		DATE: 5/20/97	
		DRAWN: M. ARTIS	
		DATE: 5/20/97	
		CHECKED: M. ARTIS	
		DATE: 5/20/97	
		SCALE: 1=1	
		SIZE: C	
		REVISION: 2	
		QUANTITY FOR AN ASSEMBLY: 1	
		QUANTITY FOR ENTIRE DUMMY: 1	
		MATERIAL: SEE NOTE 1	
		DRAWING TITLE: UPPER ABDOMEN FRONT STIFFENING CLOTH	
		DRAWING NUMBER: T1UAF313	
		Page: 1/1	

NOTE:

1 USE NYLON STIFFENING CLOTH (20 OZ./YD) (REF PG# W9370)

2 ADD ACCELEROMETER MOUNTING HOLES AFTER SEWN

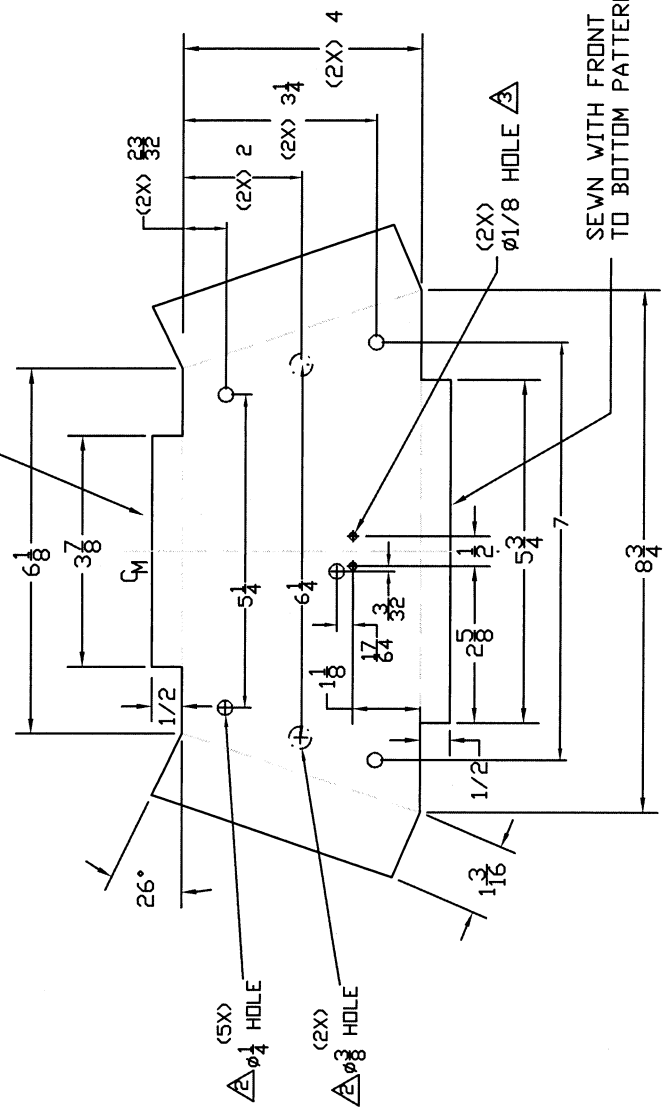


10	9	8	7	6	5	4	3	2	1
----	---	---	---	---	---	---	---	---	---

16	15	14	13	12	11	10	9	8	7	6	5	4	3	2	1
J	I	H	G	F	E	D	C	B	A						

REV. #	DATE	DESCRIPTION	BY
1	5/6/98	ADDED ACCEL. HOLES, EDIT TEXT	J. POLLARD
2	5/26/98	REPOSITIONED ALL DIA 1/4 & 3/8 HOLES	M. ARTS
3	1/10/06	CHANGED 1 5/16 TO 1 3/16, 7 1/8 TO 6 1/8 AND 4 TO 3 7/8	B. SREX

SEWN WITH FRONT PATTERN (TIUAF313)
TO TOP FLAP (TIUAF311)



LEGEND

— PATTERN EDGES

--- FOLD LINES

- - - CUT LINES

SEWN WITH FRONT PATTERN (TIUAF313)
TO BOTTOM PATTERN (TIUAF312)

NOTES:

- ▲ USE CORDURA NYLON FABRIC (1000 DENIER - 10 OZ./YD.) (REF PG# W9350)
- ▲ PUNCH HOLES THROUGH FLAP AFTER SEWING
- ▲ CUT-OUT ACCELEROMETER MOUNTING HOLES AFTER SEWING
- ▲ THE DRAWING AS SHOWN REPRESENT THE FRONT VIEW OF THE BAG. (AS IF VIEWING THE THOR FROM THE FRONT.)

QTY	DWG/PART NUMBER	DESCRIPTION	MATERIAL
1	TIUAF313	FRONT PATTERN	CORDURA NYLON FABRIC (1000 DENIER - 10 OZ./YD.)
1	TIUAF312	BACK PATTERN	CORDURA NYLON FABRIC (1000 DENIER - 10 OZ./YD.)
1	TIUAF311	TOP FLAP PATTERN	CORDURA NYLON FABRIC (1000 DENIER - 10 OZ./YD.)
1	TIUAF314	UPPER ABDOMEN FRONT OVERLAY FABRIC PATTERN	CORDURA NYLON FABRIC (1000 DENIER - 10 OZ./YD.)

ENGINEER	DATE	DESCRIPTION
J. POLLARD	5/9/98	ADDED ACCEL. HOLES, EDIT TEXT
M. ARTS	5/20/98	REPOSITIONED ALL DIA 1/4 & 3/8 HOLES
M. ARTS	5/20/98	CHANGED 1 5/16 TO 1 3/16, 7 1/8 TO 6 1/8 AND 4 TO 3 7/8

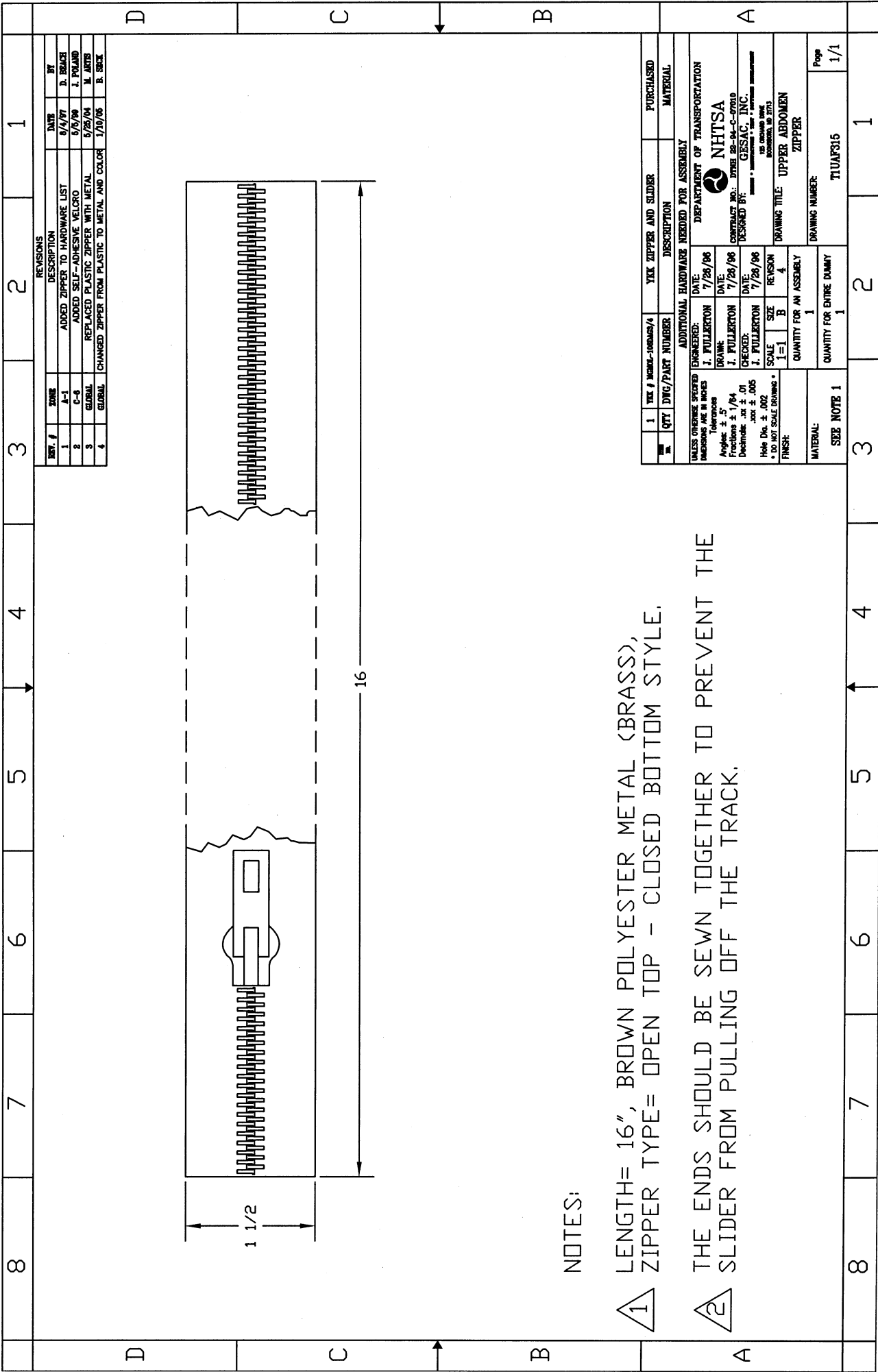
SCALE	SIZE	REVISION
1=1	D	3

QUANTITY FOR AN ASSEMBLY	QUANTITY FOR ENTIRE DUMMY
1	1

DATE	BY
5/6/98	J. POLLARD
5/26/98	M. ARTS
1/10/06	B. SREX

CONTRACT NO.	DESIGNED BY
DTNRE 88-94-C-07010	M. ARTS

DEPARTMENT OF TRANSPORTATION
NHTSA
CONTRACT NO. DTNRE 88-94-C-07010
DESIGNED BY: M. ARTS
DATE: 5/20/98
SCALE: 1=1
SIZE: D
REVISION: 3
TRACING TITLE: UPPER ABDOMEN FRONT OVERLAY FABRIC PATTERN
DRAWING NUMBER: TIUAF314
PAGE: 1/1



REVISIONS		DATE	BY
1	ADDED ZIPPER TO HARDWARE LIST	9/4/97	D. BEACH
2	ADDED SELF-ADHESIVE VELCRO	9/9/99	J. POLJAND
3	REPLACED PLASTIC ZIPPER WITH METAL	5/25/04	M. ARTIS
4	CHANGED ZIPPER FROM PLASTIC TO METAL AND COLOR	1/10/06	B. SARK

QTY	INC. #	WOM-100065/4	YKK ZIPPER AND SLIDER	DESCRIPTION	PURCHASED	MATERIAL
1						

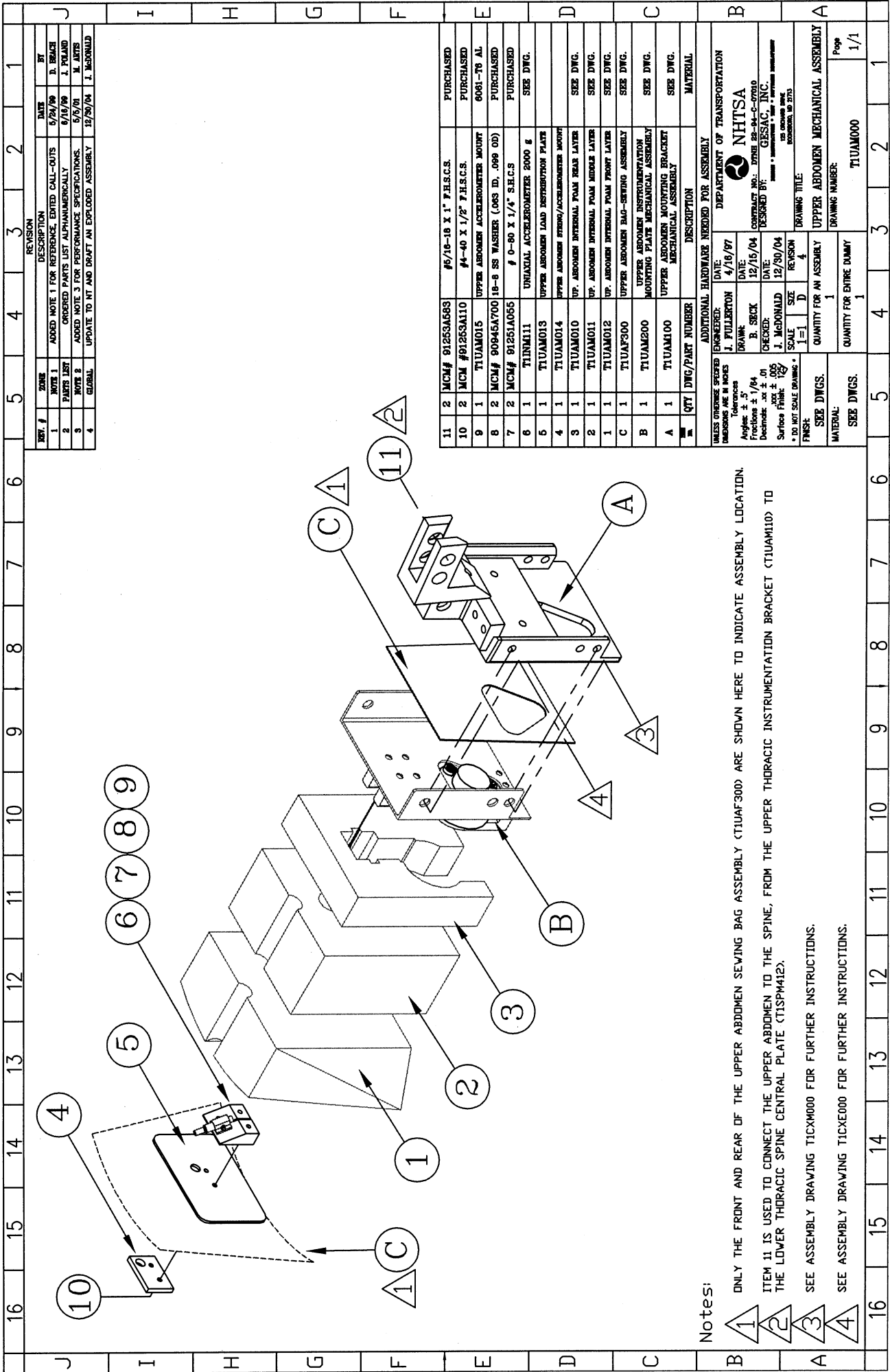
ADDITIONAL HARDWARE NEEDED FOR ASSEMBLY	
ENGINEERED:	DATE: 7/28/06
1. FULLERTON	
DRAWN:	DATE: 7/28/06
1. FULLERTON	
CHECKED:	DATE: 7/28/06
1. FULLERTON	
SCALE:	1=1
SIZE:	B
REVISION:	4
QUANTITY FOR AN ASSEMBLY:	1
QUANTITY FOR ENTIRE DUMMY:	1

MATERIAL:	
SEE NOTE 1	
QUANTITY FOR ENTIRE DUMMY:	1
DRAWING NUMBER:	T1UAF315
Page:	1/1

NOTES:

1 LENGTH= 16", BROWN POLYESTER METAL (BRASS), ZIPPER TYPE= OPEN TOP - CLOSED BOTTOM STYLE.

2 THE ENDS SHOULD BE SEWN TOGETHER TO PREVENT THE SLIDER FROM PULLING OFF THE TRACK.



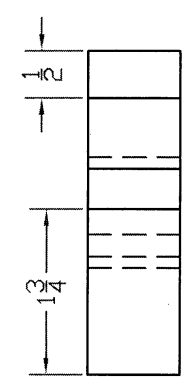
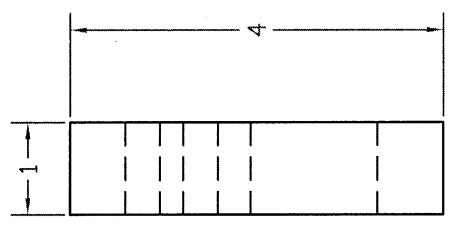
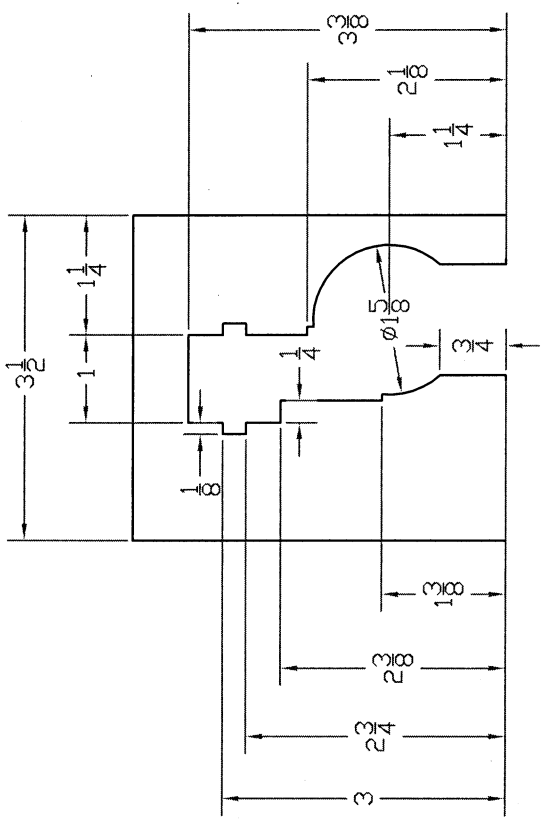
Notes:
 1 ONLY THE FRONT AND REAR OF THE UPPER ABDOMEN SEWING BAG ASSEMBLY (TIUAF300) ARE SHOWN HERE TO INDICATE ASSEMBLY LOCATION.
 2 ITEM 11 IS USED TO CONNECT THE UPPER ABDOMEN TO THE SPINE, FROM THE UPPER THORACIC INSTRUMENTATION BRACKET (TIUAM110) TO THE LOWER THORACIC SPINE CENTRAL PLATE (TISPM412).
 3 SEE ASSEMBLY DRAWING TICX000 FOR FURTHER INSTRUCTIONS.
 4 SEE ASSEMBLY DRAWING TICXE000 FOR FURTHER INSTRUCTIONS.

UNLESS OTHERWISE SPECIFIED
 DIMENSIONS ARE IN INCHES
 Tolerances
 Fractions ± 1/64
 Decimals for ± .005
 Surface Finish: 125
 * DO NOT SCALE DRAWING *

ADDITIONAL HARDWARE NEEDED FOR ASSEMBLY
 ENGINEERED: J. FULLERTON
 DATE: 4/16/97
 DRAWN: B. SECK
 DATE: 12/16/04
 CHECKED: J. MC DONALD
 DATE: 12/30/04
 SCALE: 1=1
 SIZE: D
 REVISION: 4
 QUANTITY FOR AN ASSEMBLY: 1
 QUANTITY FOR ENTIRE DUMMY: 1
 DRAWING NUMBER: TIUAM000
 Page: 1/1

DEPARTMENT OF TRANSPORTATION
 NHTSA
 CONTRACT NO.: DPNR 98-C-000
 DESIGNED BY: GESC/C. INC.
 DRAWING TITLE:
 UPPER ABDOMEN MECHANICAL ASSEMBLY
 125 GROUND BONE
 DOWNSHOCK, LP 2713

10	9	8	7	6	5	4	3	2	1
H	G	F	E	D	C	B	A		



NOTES:

- 1 THE FOAM MATERIAL IS BLENDED SPONGE RUBBER WITH A FIRM STIFFNESS. (REFERENCE MCM# 8647K49)
- 2 ONE LAYER OF THIS FOAM IS NEEDED TO PRODUCE THE DESIRED THICKNESS.
- 3 FOAM IS CUT TO MATCH PATTERN OF STRING POT AND PULLEY WHEEL ASSEMBLY.
- 4 REFER TO THOR ALPHA CERTIFICATION MANUAL REVISION 1.0 FOR PERFORMANCE SPECIFICATIONS FOR THIS PART.

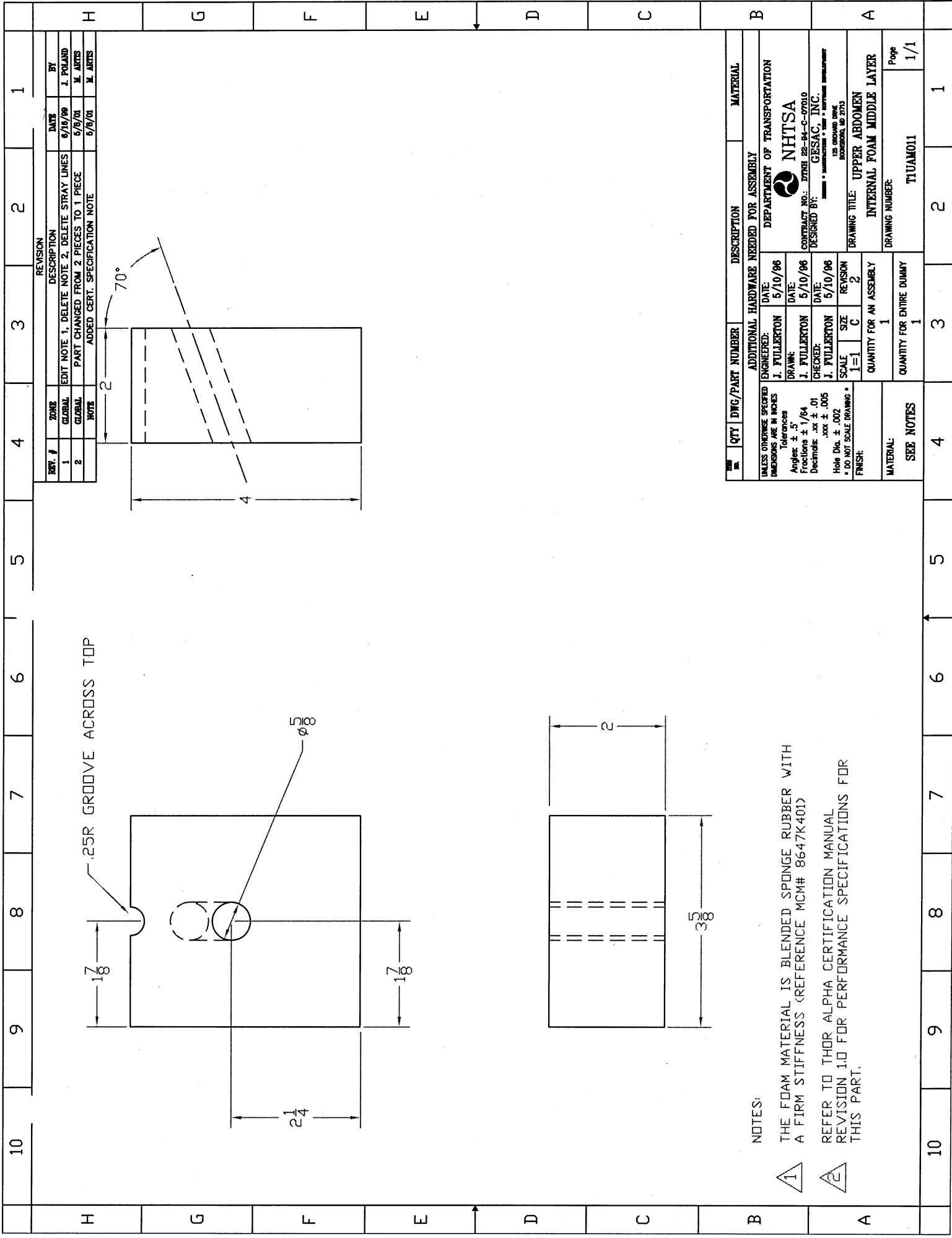
REV. #	ZONE	DESCRIPTION	DATE	BY
1		EDITED NOTE 1, DELETED NOTE 2	6/16/99	J. POLAND
2		ADDED CERT. SPECIFICATION NOTE	5/9/01	M. ARTIS

QTY	DWG/PART NUMBER	DESCRIPTION	MATERIAL
		ADDITIONAL HARDWARE NEEDED FOR ASSEMBLY	
		ENGINEERED: J. FULLERTON	
		DATE: 4/16/97	
		DRAWN: J. FULLERTON	
		DATE: 4/16/97	
		CHECKED: J. FULLERTON	
		DATE: 4/16/97	
		SCALE: 1=1	
		SIZE: C	
		REVISION: 2	
		QUANTITY FOR AN ASSEMBLY: 1	
		QUANTITY FOR ENTIRE DUMMY: 1	
		DRAWING TITLE: UPPER ABDOMEN	
		INTERNAL FOAM REAR LAYER	
		DRAWING NUMBER: TUUM010	
		Page: 1/1	

UNLESS OTHERWISE SPECIFIED DIMENSIONS ARE IN INCHES
 Tolerances
 Angles: ± 5°
 Fractions: ± 1/64
 Decimals: .xx ± .01
 Hole Dia: ± .002
 * DO NOT SCALE DRAWINGS *

DESIGNED BY: GESAC, INC.
 125 ORCHARD DRIVE
 BOONSHIRE, MA 0713

DEPARTMENT OF TRANSPORTATION
 NHTSA
 CONTRACT NO.: DTHB 22-94-C-07010



REV. #	ZONE	DESCRIPTION	DATE	BY
1	GLOBAL	EDIT NOTE 1, DELETE NOTE 2, DELETE STRAY LINES	6/16/09	J. POLAND
2	GLOBAL	PART CHANGED FROM 2 PIECES TO 1 PIECE	6/9/01	M. ARTIS
	NOTE	ADDED CERT. SPECIFICATION NOTE	6/9/01	M. ARTIS

QTY	DWG/PART NUMBER	DESCRIPTION	MATERIAL
UNLESS OTHERWISE SPECIFIED: DIMENSIONS ARE IN INCHES Tolerances Angles: ± .5° Fractions: ± 1/64 Decimals: .xx ± .01 Hole Dia. ± .002 * DO NOT SCALE DRAWING *			
ENGINEERED: J. FULLERTON		DATE: 5/10/06	ADDITIONAL HARDWARE NEEDED FOR ASSEMBLY
DRAWN: J. FULLERTON		DATE: 5/10/06	DEPARTMENT OF TRANSPORTATION
CHECKED: J. FULLERTON		DATE: 5/10/06	DESIGNED BY: NHTSA
SCALE: 1=1		SIZE: C	CONTRACT NO.: DTMB 22-04-G-07010
QUANTITY FOR AN ASSEMBLY: 1		REVISION: 2	DRAWING TITLE: UPPER ABDOMEN
QUANTITY FOR ENTIRE DUMMY: 1			INTERNAL FOAM MIDDLE LAYER
MATERIAL: SEE NOTES			DRAWING NUMBER: T1UAM011
			Page: 1/1

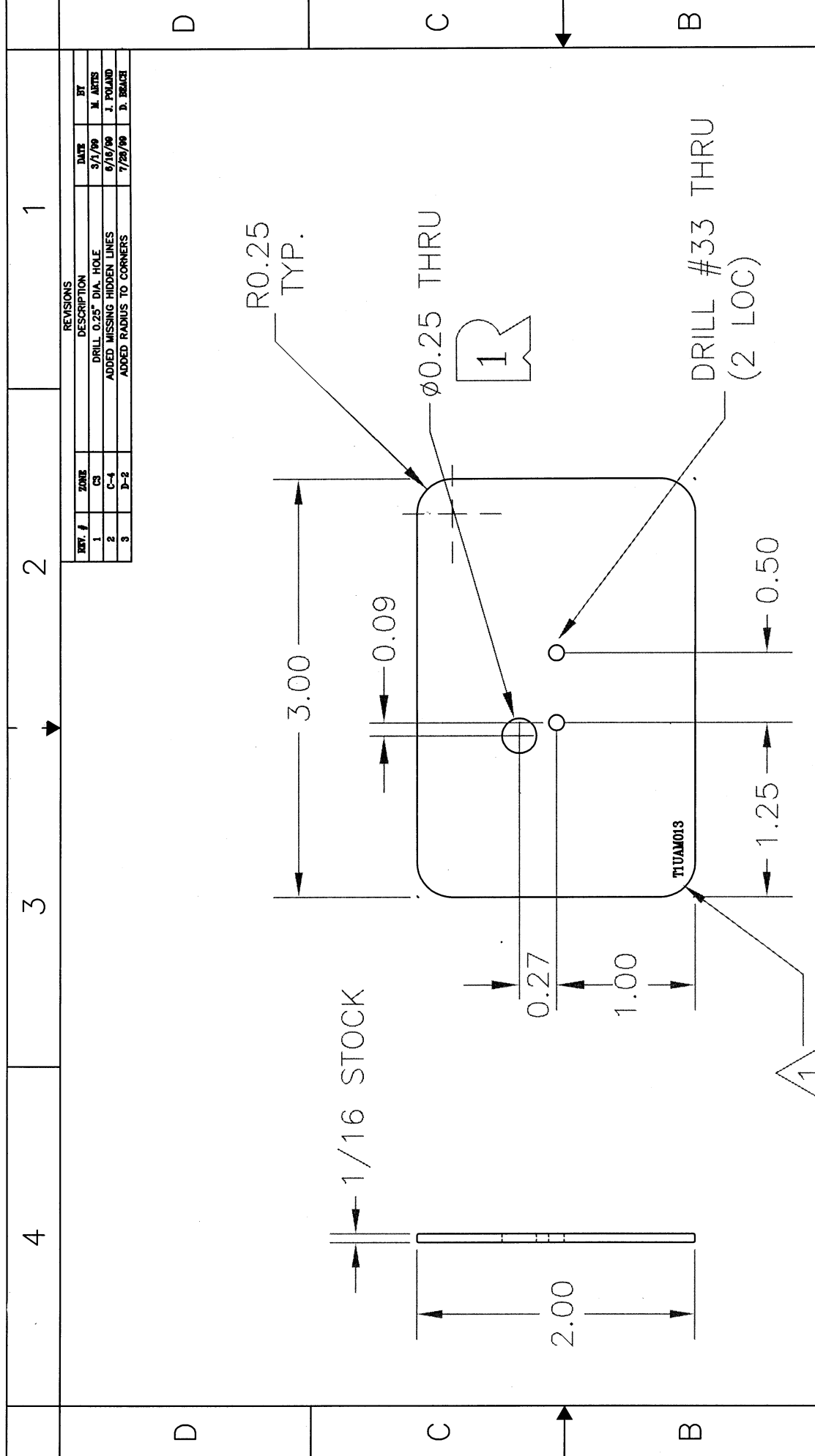
NOTES:

1 THE FOAM MATERIAL IS BLENDED SPONGE RUBBER WITH A FIRM STIFFNESS (REFERENCE MCM# 8647K401)

2 REFER TO THOR ALPHA CERTIFICATION MANUAL REVISION 1.0 FOR PERFORMANCE SPECIFICATIONS FOR THIS PART.

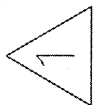
10 9 8 7 6 5 4 3 2 1

H G F E D C B A

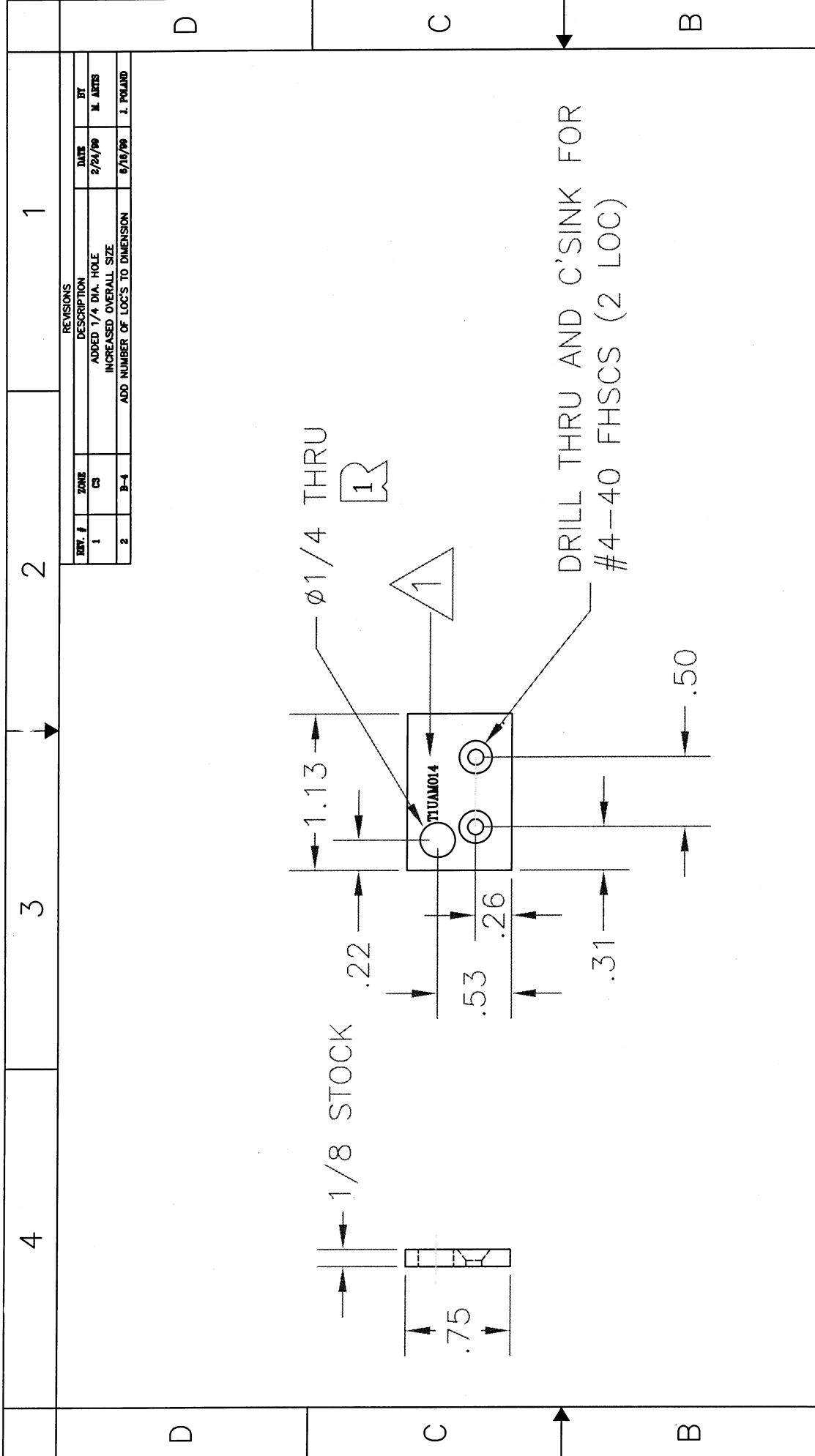


REV.	QTY	DWG/PART NUMBER	DESCRIPTION	MATERIAL																																																																														
1	1	T11UAM013	LOAD DISTRIBUTION PLATE	1/16" HDPE																																																																														
<table border="1"> <thead> <tr> <th colspan="2">UNLESS OTHERWISE SPECIFIED</th> <th colspan="2">ADDITIONAL HARDWARE NEEDED FOR ASSEMBLY</th> <th colspan="2">MATERIAL</th> </tr> <tr> <th>ENGINEERED:</th> <th>DATE:</th> <th colspan="2">DEPARTMENT OF TRANSPORTATION</th> <th colspan="2">NHTSA</th> </tr> </thead> <tbody> <tr> <td>J. FULLERTON</td> <td>5/10/96</td> <td colspan="2"></td> <td colspan="2"></td> </tr> <tr> <td>DRONE:</td> <td>DATE:</td> <td colspan="2"></td> <td colspan="2"></td> </tr> <tr> <td>J. FULLERTON</td> <td>5/10/96</td> <td colspan="2"></td> <td colspan="2"></td> </tr> <tr> <td>CHECKED:</td> <td>DATE:</td> <td colspan="2"></td> <td colspan="2"></td> </tr> <tr> <td>J. FULLERTON</td> <td>5/10/96</td> <td colspan="2"></td> <td colspan="2"></td> </tr> <tr> <td>SCALE:</td> <td>SIZE:</td> <td>REVISION:</td> <td colspan="3"></td> </tr> <tr> <td>1=1</td> <td>A</td> <td>3</td> <td colspan="3"></td> </tr> <tr> <td colspan="2">QUANTITY FOR AN ASSEMBLY</td> <td colspan="2">DRAWING TITLE:</td> <td colspan="2">Page</td> </tr> <tr> <td>1</td> <td>1</td> <td colspan="2">LOAD DISTRIBUTION PLATE</td> <td colspan="2">1/1</td> </tr> <tr> <td colspan="2">QUANTITY FOR ENTIRE DUMMY</td> <td colspan="2">DRAWING NUMBER:</td> <td colspan="2">Page</td> </tr> <tr> <td>1</td> <td>1</td> <td colspan="2">T11UAM013</td> <td colspan="2">1/1</td> </tr> </tbody> </table>					UNLESS OTHERWISE SPECIFIED		ADDITIONAL HARDWARE NEEDED FOR ASSEMBLY		MATERIAL		ENGINEERED:	DATE:	DEPARTMENT OF TRANSPORTATION		NHTSA		J. FULLERTON	5/10/96					DRONE:	DATE:					J. FULLERTON	5/10/96					CHECKED:	DATE:					J. FULLERTON	5/10/96					SCALE:	SIZE:	REVISION:				1=1	A	3				QUANTITY FOR AN ASSEMBLY		DRAWING TITLE:		Page		1	1	LOAD DISTRIBUTION PLATE		1/1		QUANTITY FOR ENTIRE DUMMY		DRAWING NUMBER:		Page		1	1	T11UAM013		1/1	
UNLESS OTHERWISE SPECIFIED		ADDITIONAL HARDWARE NEEDED FOR ASSEMBLY		MATERIAL																																																																														
ENGINEERED:	DATE:	DEPARTMENT OF TRANSPORTATION		NHTSA																																																																														
J. FULLERTON	5/10/96																																																																																	
DRONE:	DATE:																																																																																	
J. FULLERTON	5/10/96																																																																																	
CHECKED:	DATE:																																																																																	
J. FULLERTON	5/10/96																																																																																	
SCALE:	SIZE:	REVISION:																																																																																
1=1	A	3																																																																																
QUANTITY FOR AN ASSEMBLY		DRAWING TITLE:		Page																																																																														
1	1	LOAD DISTRIBUTION PLATE		1/1																																																																														
QUANTITY FOR ENTIRE DUMMY		DRAWING NUMBER:		Page																																																																														
1	1	T11UAM013		1/1																																																																														

NOTE:



ENGRAVE THE DWG. # T11UAM013 AT THE LOCATION SPECIFIED ABOVE.



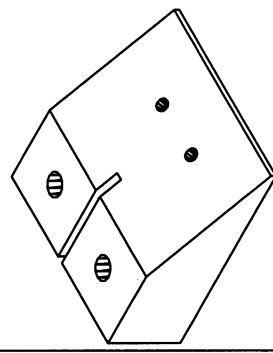
REV. NO.	QTY	DWG/PART NUMBER	DESCRIPTION	MATERIAL
1	1	T1UAM014	STRING/ACCELEROMETER MOUNT PLATE	T1UAM014
2	1		STRING/ACCELEROMETER MOUNT PLATE	
3	1		STRING/ACCELEROMETER MOUNT PLATE	
4	1		STRING/ACCELEROMETER MOUNT PLATE	

REVISIONS		DATE	BY
1	ADDED 1/4 DIA. HOLE INCREASED OVERALL SIZE	2/24/98	M. AKTIS
2	ADD NUMBER OF LOC'S TO DIMENSION	6/18/98	J. POLAND

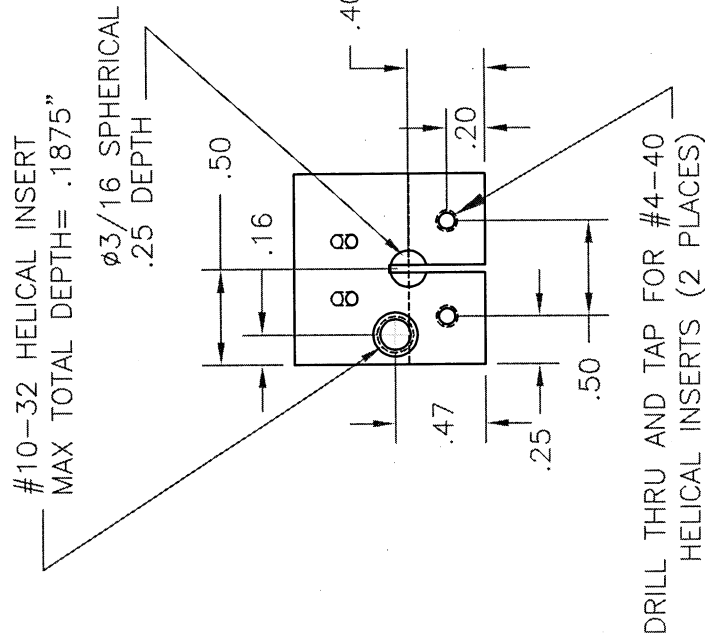
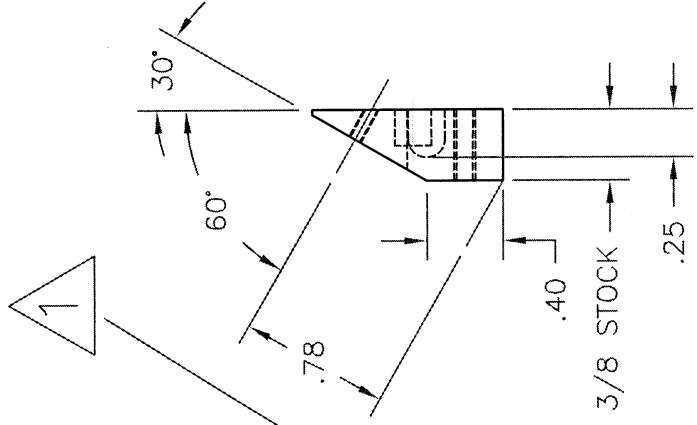
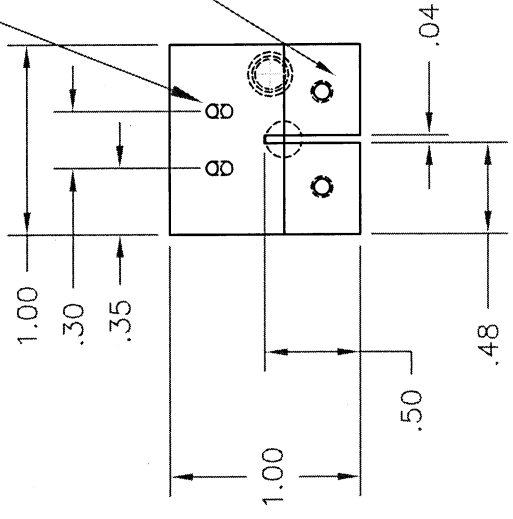
UNLESS OTHERWISE SPECIFIED		ADDITIONAL HARDWARE NEEDED FOR ASSEMBLY	
DIMENSIONS ARE IN INCHES		ENGINEERED:	J. FULLERTON
Tolerances		DATE:	5/8/98
Angles:	± .5°	DRAWN:	J. FULLERTON
Fractions:	± 1/64	DATE:	5/8/98
Decimals:	.xx ± .01	CHECKED:	J. FULLERTON
	.xxx ± .005	DATE:	5/8/98
Hole Dia.:	± .002	SCALE:	1=1
* DO NOT SCALE DRAWINGS *		SIZE:	A
FINISH:		REVISION:	2
MATERIAL:		QUANTITY FOR AN ASSEMBLY:	1
DELFIN		QUANTITY FOR ENTIRE DUMMY:	1

NOTE: ENGRAVE DWG# T1UAM014 AT THE LOCATION SPECIFIED ABOVE.

4 3 2 1



DRILL THRU AND TAP FOR #0-80 THREADS (2 LOC)



#10-32 HELICAL INSERT
MAX TOTAL DEPTH= .1875"
ø3/16 SPHERICAL
.25 DEPTH

REV. #	ZONE	DESCRIPTION	DATE	BY
1	CS	ADDED 10-32 HELICAL	2/24/98	M. ARIS
2	PARTS LIST	ADDED HELICAL INSERTS TO PARTS LIST	9/19/98	J. POLAND
3	MATL	CHANGED MATERIAL TO 6061-T6 AL FROM DELRIN	01/27/04	J. McDONALD
4	S.C	ADDED ALIGNED DIM TO #0-80 TAPPED HOLE	9/28/04	J. McDONALD
	NOTE	ADDED NOTE 2	9/28/04	J. McDONALD

QTY	DWG/PART NUMBER	DESCRIPTION	MATERIAL
1	MSC# 00060483	#10-32 X .190 HELICAL INSERT	PURCHASED
2	MSC# 00060145	#4-40 X .338 HELICAL INSERT	PURCHASED

UNLESS OTHERWISE SPECIFIED		DATE	
ENGINEERED:	J. FULLERTON	5/6/96	
DRAWN:	J. FULLERTON	5/6/96	
CHECKED:	J. FULLERTON	5/6/96	
SCALE:	1=1	REASON:	4
Hole Dia. ± .002		DO NOT SCALE DRAWING *	
FINISH:			

ADDITIONAL HARDWARE NEEDED FOR ASSEMBLY

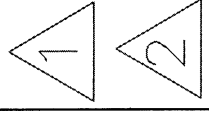
QUANTITY FOR AN ASSEMBLY	QUANTITY FOR ENTIRE DUMMY
1	1

MATERIAL: 6061-T6 AL

NOTE:

ENGRAVE THE DWG# T1UAM015 AT THE LOCATION SPECIFIED ABOVE.

REMOVE ALL SHARP EDGES

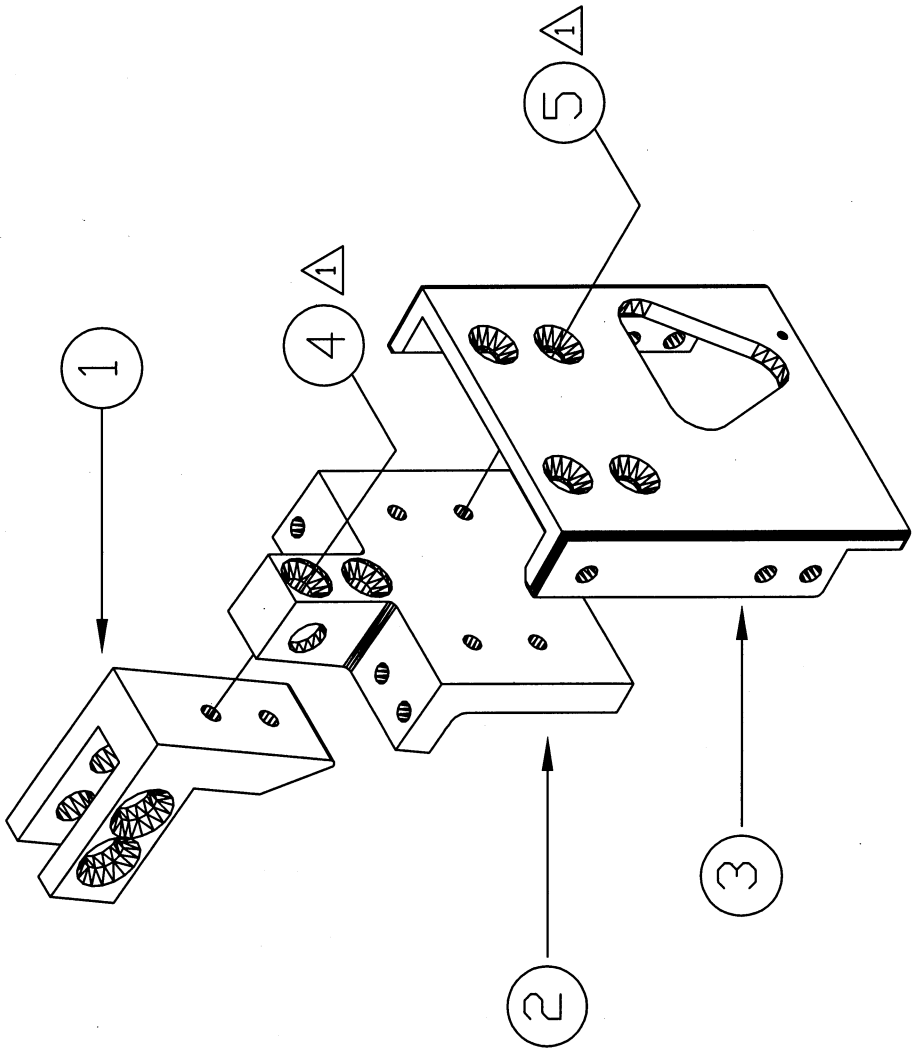


DEPARTMENT OF TRANSPORTATION
NHTSA
 CONTRACT NO.: DTMB 89-04-C-07010
 DESIGNED BY: GIBSAC, INC.
 124 BRUSH WALK
 ROCKFORD, IL 61103

DRAWING TITLE: UPPER ABDOMEN
 ACCELEROMETER MOUNT

DRAWING NUMBER: T1UAM015
 Page 1/1

4 3 2 1



NOTE:

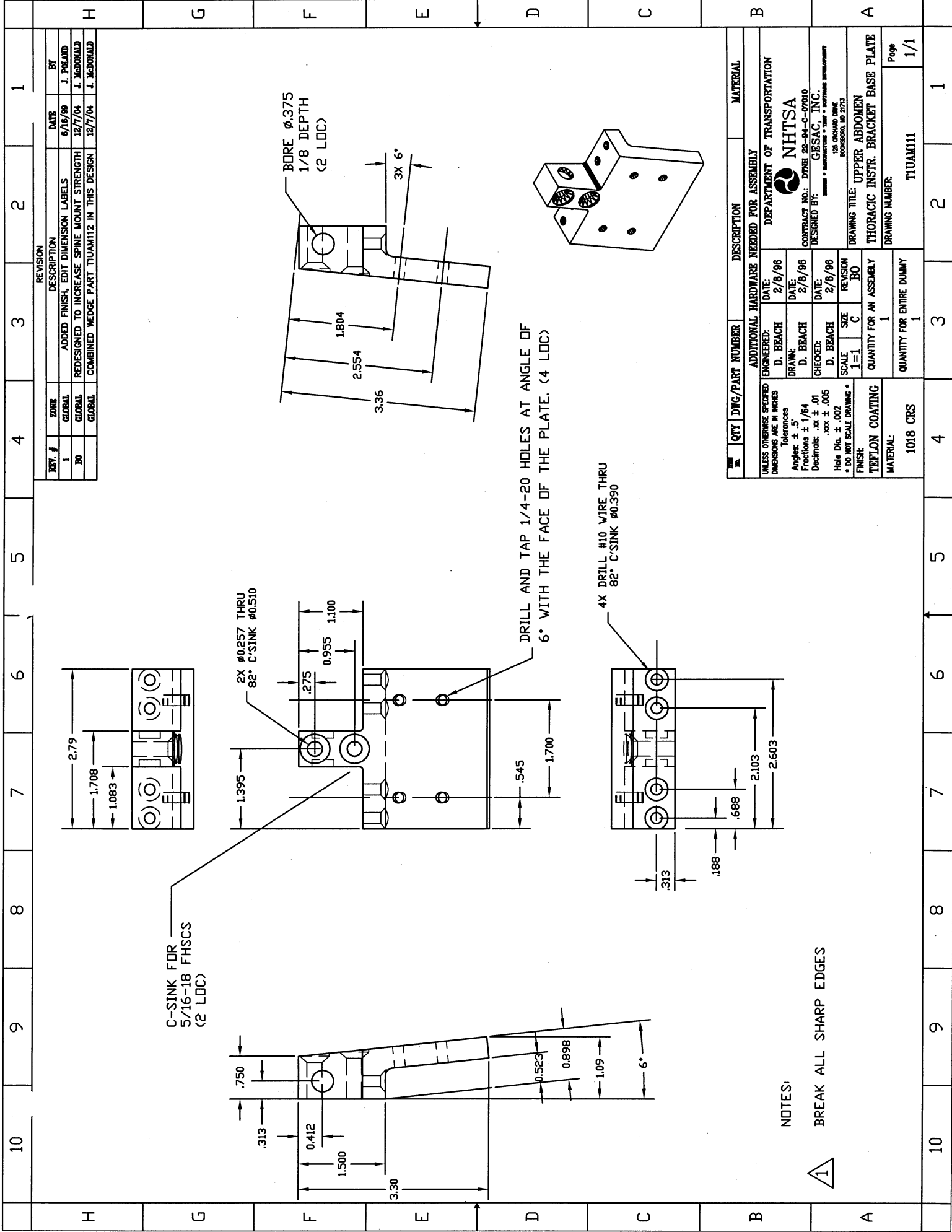
1 ASSEMBLE USING LOCTITE PERMANENT THREAD LOCKER 262.

REV. #	ZONE	DESCRIPTION	DATE	BY
1	GLOBAL	CLARIFIED DRAWING AND CALL-OUTS	5/25/09	D. BRACHER
2	GLOBAL	ADDED ITEM 6, CHANGED QTY ITEM 4	5/25/09	D. BRACHER
3	GLOBAL	UPDATED TIUAMI11 TO REV 3	5/25/04	M. ARTIS
4	GLOBAL	UPDATED ALL COMPONENTS, EXPLODED ASSEMBLY	12/7/04	J. McDONALD

QTY	DWG/PART NUMBER	DESCRIPTION	MATERIAL
5	MCM #912534539	1/4-20 X 5/8" F.H.S.C.S	PURCHASED
4	MCM #912534544	1/4-20 X 1-1/4" F.H.S.C.S.	PURCHASED
3	TIUAMI13	SPINAL MOUNT BRACKET	1018 CRS
2	TIUAMI11	THORACIC INST. BRACKET BASE PLATE	1018 CRS
1	TIUAMI10	THORACIC INSTRUMENTATION BRACKET	1018 CRS

PARTS LIST	
ENGINEERED:	DATE: 4/16/06
J. FULLERTON	
DRAWN:	DATE: 6/16/07
M. ARTIS	
CHECKED:	DATE: 6/16/07
M. ARTIS	
SCALE:	SIZE: REVISION
1=1	C 4
QUANTITY FOR AN ASSEMBLY	
1	
QUANTITY FOR ENTIRE DUMMY	
1	
MATERIAL:	

DEPARTMENT OF TRANSPORTATION
NHTSA
 CONTRACT NO.: DTMB 22-94-C-07010
 DESIGNED BY: GESAC, INC.
125 ORCHARD BLVD
 BOSSBORO, MD 21713
 DRAWING TITLE: UPPER ABDOMEN
 MECHANICAL ASSEMBLY OF SPINAL MOUNT BRACKET
 DRAWING NUMBER: TIUAMI100
 Page 1/1



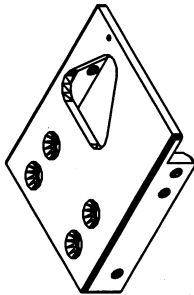
REV. #	ZONE	DESCRIPTION	DATE	BY
1	GLOBAL	ADDED FINISH, EDIT DIMENSION LABELS	8/16/96	J. POJAND
2	GLOBAL	REDESIGNED TO INCREASE SPINE MOUNT STRENGTH	12/7/04	J. McDONALD
3	GLOBAL	COMBINED WEDGE PART TIUAM112 IN THIS DESIGN	12/7/04	J. McDONALD

QTY	DWG/PART NUMBER	DESCRIPTION	MATERIAL
1018 CRS		ADDITIONAL HARDWARE NEEDED FOR ASSEMBLY	
		ENGINEERED: D. BEACH DATE: 2/8/96	
		DRAWN: D. BEACH DATE: 2/8/96	
		CHECKED: D. BEACH DATE: 2/8/96	
		SCALE: 1=1 C	
		QUANTITY FOR AN ASSEMBLY: 1	
		QUANTITY FOR ENTIRE DUMMY: 1	
		FINISH: TEFLON COATING	
		MATERIAL: 1018 CRS	

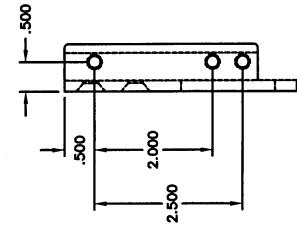
NOTES:
 1 BREAK ALL SHARP EDGES

NHTSA
 DEPARTMENT OF TRANSPORTATION
 CONTRACT NO.: DTRM 22-94-C-07010
 DESIGNED BY: GESAC, INC.
 125 ORCHARD DRIVE
 BOSSBORO, MA 02713

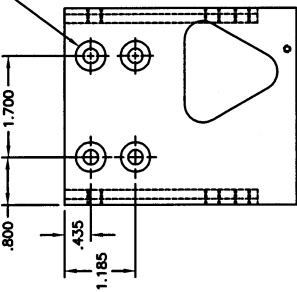
DRAWING TITLE: UPPER ABDOMEN
 THORACIC INSTR. BRACKET BASE PLATE
 DRAWING NUMBER: TIUAM111
 Page: 1/1



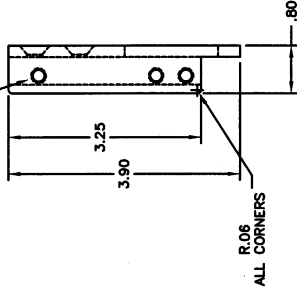
DRILL THRU AND C'SINK FOR FLUSH FIT OF #1/4 FHSCS (4 LOC)



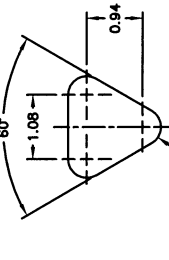
R.06 (2 LOC)



DRILL AND TAP THRU FOR #1/4-20 THREADS (6 LOC)



DETAIL OF HOLE PATTERN (MACHINE THRU THE .188" THICKNESS OF THE PLATE.)

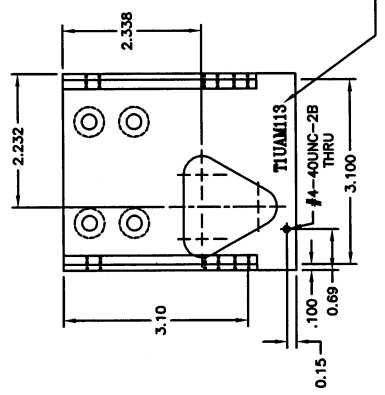


NOTES:

1 BREAK ALL SHARP EDGES.

2 ENGRAVE THE DWG# T1UAM113 AT THE LOCATION SPECIFIED ABOVE.

REV. #	ZONE	DESCRIPTION	DATE	BY
1		SEPARATED BENT PART INTO THREE PARTS	11/7/96	J.L.P.
2		MACHINE FROM ONE PIECE OF STOCK	9/24/97	J.L.P.
3		CHANGED DRAWING NAME	9/2/97	D. BRACK
4		ADDED FINISH	6/18/98	J. POLARD
5		SIMPLIFIED THE SHAPE OF THE THRU HOLE	11/19/02	M. ARTS
6		ADDED #4-20 TAPPED HOLE	11/19/02	M. ARTS
7		SHIFTED THE THRU HOLE .058" TOWARD CENTER	11/19/02	M. ARTS
8		ADDED BASIC DIM OF 2.800	11/19/02	M. ARTS
9		REMOVED MATL FROM LOWER FLANGES, ADDED 3.25 DIM	12/6/04	J. McRONOLD
10		DEPTH OF PART CHANGED FROM .80 TO .80	12/6/04	J. McRONOLD

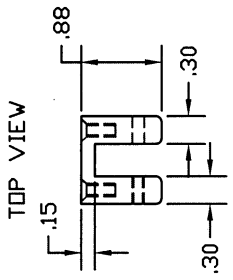


QTY	DWG/PART NUMBER	DESCRIPTION	MATERIAL
1	T1UAM113	UPPER ABDOMEN SPINAL MOUNT BRACKET	T1UAM113
1		QUANTITY FOR AN ASSEMBLY	
1		QUANTITY FOR ENTIRE DUMMY	

ENGINEERED:	DATE:	DEPARTMENT OF TRANSPORTATION
J. FULLERTON	11/11/96	NHTSA
DRAWN:	DATE:	CONTRACT NO.:
J. FULLERTON	11/11/96	DYWIDAG-94-C-07610
CHECKED:	DATE:	DESIGNED BY:
M. ARTS	11/19/02	GESAC, INC.
SCALE	SIZE	REVISION
1=1	D	7
FINISH		
TEFLON COATING		
MATERIAL		
1018 CRS		

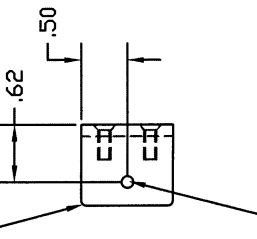
10	9	8	7	6	5	4	3	2	1
H	G	F	E	D	C	B	A		

REV. #	ZONE	DESCRIPTION	DATE	BY
1		ADDED FINISH	6/16/96	J. POLAND
2		INCREASED HOLE DIA SIZE FROM .125 TO .129	11/18/02	M. ARTIS
3		CHANGED C'SINK DEPTH OF .08 TO A Ø0.240	12/21/04	J. McDONALD

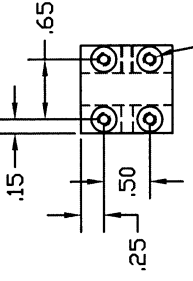


TOP VIEW

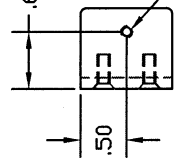
FRONT VIEW



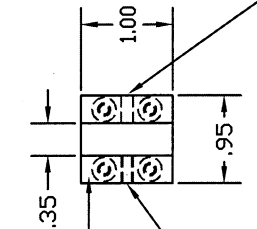
FRONT VIEW



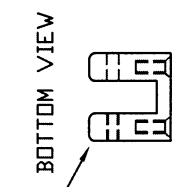
REAR VIEW



LEFT VIEW



RIGHT VIEW



BOTTOM VIEW

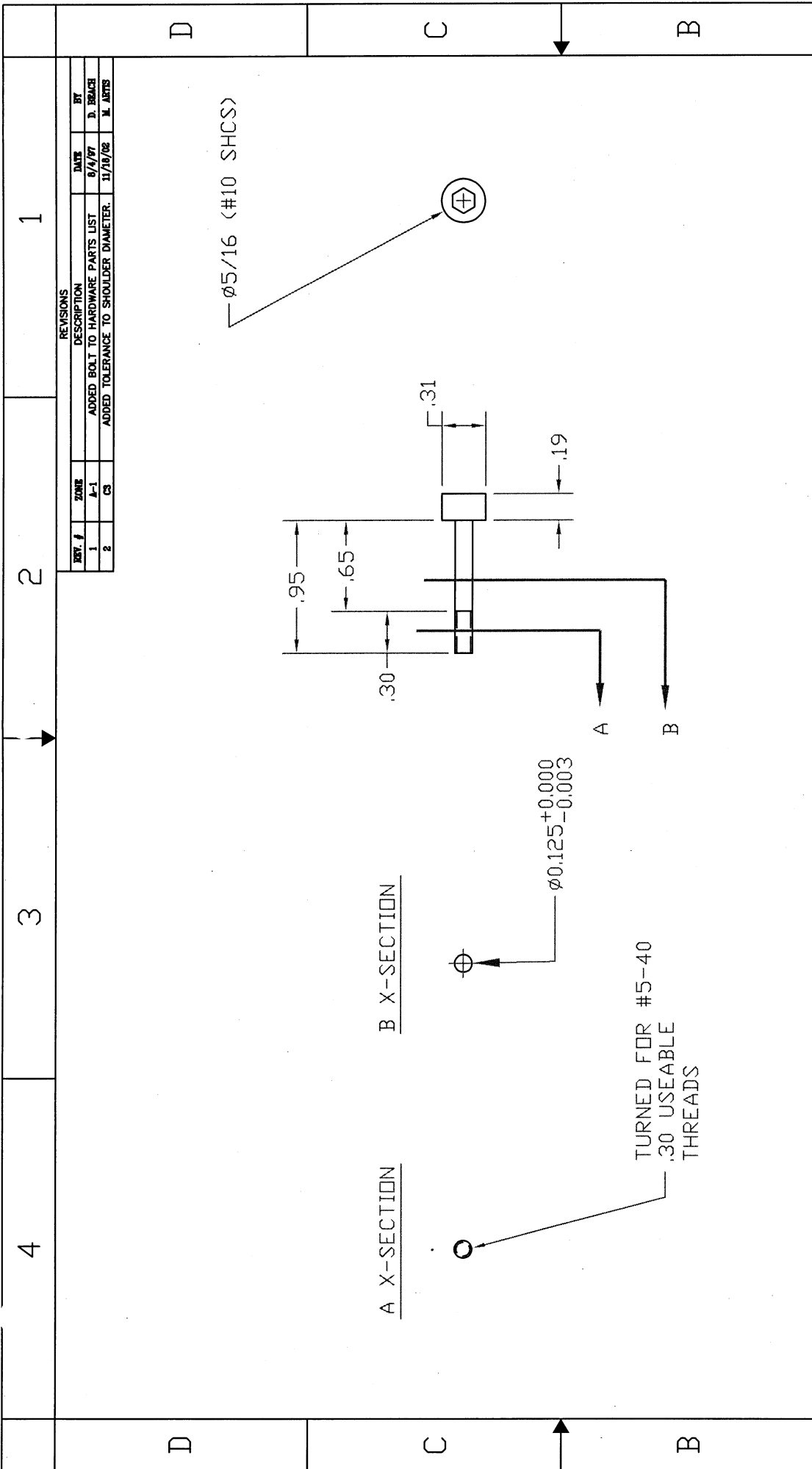
NOTES:

BREAK ALL SHARP EDGES

ENGRAVE THE DWG# T1UAM210 AT THE LOCATION SPECIFIED ABOVE.

QTY	DWG/PART NUMBER	DESCRIPTION	MATERIAL
1		ADDITIONAL HARDWARE NEEDED FOR ASSEMBLY	
	ENGINEERED: J. FULLERTON	DATE: 5/6/96	DEPARTMENT OF TRANSPORTATION
	DRAWN: J. FULLERTON	DATE: 5/6/96	NHTSA
	CHECKED: M. ARTIS	DATE: 11/18/02	CONTRACT NO.: DTMB 22-94-C-07010
	SCALE: 1=1	REVISION: 3	DESIGNED BY: CERSAC, INC.
	CLEAR ANODIZED	QUANTITY FOR AN ASSEMBLY: 1	125 BROADWAY ROCKVILLE, MD 2713
	MATERIAL: 6061 ALUM.	QUANTITY FOR ENTIRE DUMMY: 1	DRAWING TITLE: UPPER ABDOMEN PULLEY MOUNTING BLOCK
			DRAWING NUMBER: T1UAM210
			Page: 1/1

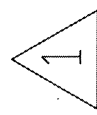




1	MCM # 91251A347	#10-32 x 1" SHCS. (ALLOY)	PURCHASED
1	QTY	DWG/PART NUMBER	MATERIAL
ADDITIONAL HARDWARE NEEDED FOR ASSEMBLY			
UNLESS OTHERWISE SPECIFIED		ENGINEERED:	DATE:
DIMENSIONS ARE IN INCHES		J. FULLERTON	5/6/06
Tolerances		DRAWN:	DATE:
Angles: ± .5°		J. FULLERTON	5/6/06
Fractions: ± 1/64		CHECKED:	DATE:
Decimals: .xx ± .01		M. ARTIS	11/18/02
Hole Dia. ± .002		SCALE	SIZE REVISION
* DO NOT SCALE DRAWING *		1=1	A 2
FINISH:		QUANTITY FOR AN ASSEMBLY	1
MATERIAL:		QUANTITY FOR ENTIRE DUMMY	1
SEE NOTE 1		DRAWING NUMBER:	TTUAM211
		Page	1/1

NOTE:

MANUFACTURE PART FROM #10-32 x 1 SHCS (ALLOY STEEL)



A X-SECTION

B X-SECTION

TURNED FOR #5-40 .30 USEABLE THREADS

$\phi 0.125^{+0.000}_{-0.003}$

$\phi 5/16$ (#10 SHCS)

REV. #	ZONE	DESCRIPTION	DATE	BY
1	A-1	ADDED BOLT TO HARDWARE PARTS LIST	8/4/07	D. BRACH
2	C3	ADDED TOLERANCE TO SHOULDER DIAMETER.	11/18/02	M. ARTIS

1

2

3

4

1

2

3

4

4

3

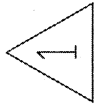
2

1

REVISIONS			
REV. #	ZONE	DESCRIPTION	DATE
1	B-2	ADDED DIMENSION FOR OUTER DIAM.	2/5/98
2	B-3	ADDED TOLERANCE TO PULLEY WIDTH	10/14/04

D

D

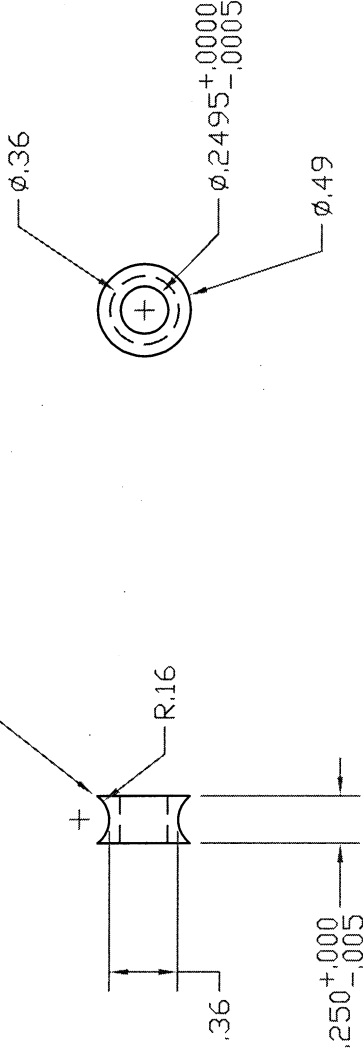


INNER DIAMETER TOLERANCES SPECIFIED FOR A CLASS FN2
PRESS FIT WITH $\phi 1/8$ MINIATURE RADIAL BEARINGS

C

C

BREAK SHARP EDGES



B

B

A

A

QTY	DWG/PART NUMBER	DESCRIPTION	MATERIAL
1		ADDITIONAL HARDWARE NEEDED FOR ASSEMBLY	
UNLESS OTHERWISE SPECIFIED			
DIMENSIONS ARE IN INCHES			
ENGINEERED:	J. FULLERTON	DATE:	5/6/98
DRAWN:	J. FULLERTON	DATE:	5/6/98
CHECKED:	J. FULLERTON	DATE:	5/6/98
SCALE:	1=1	SIZE:	A
FINISH:		REVISION:	2
QUANTITY FOR AN ASSEMBLY			
1			
QUANTITY FOR ENTIRE DUMMY			
1			
MATERIAL:			
304 SS			
DRAWING TITLE: UPPER ABDOMEN			
PULLEY WHEEL			
DRAWING NUMBER:			
TUAM212			
Page			
1/1			

4

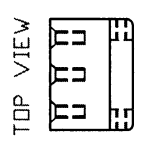
3

2

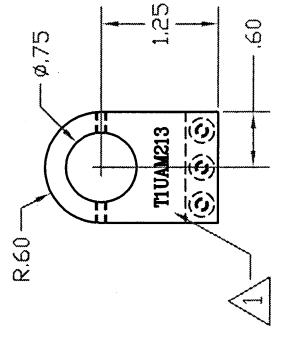
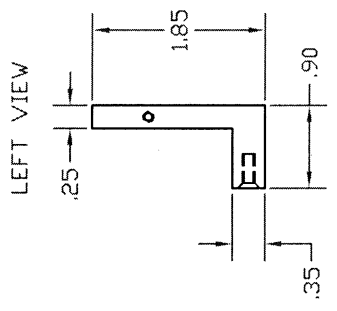
1

10	9	8	7	6	5	4	3	2	1
H	G	F	E	D	C	B	A		

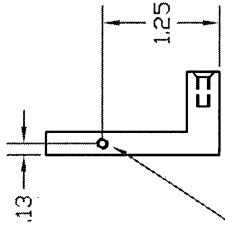
REV. #	ZONE	DESCRIPTION	DATE	BY
1		TITLE BLOCK	6/16/96	J. POLAND



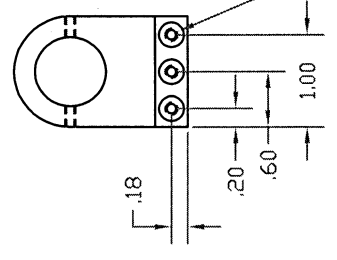
FRONT VIEW



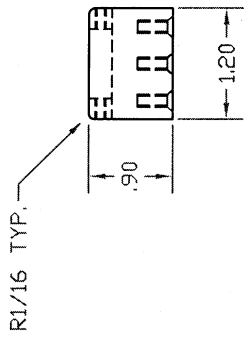
RIGHT VIEW



REAR VIEW



BOTTOM VIEW



—DRILL AND TAP FOR #4-40 THRU HOLES (2 LOC)

DRILL AND TAP FOR #6-32 X 3/8 USEABLE THREADS; C-SINK .06 DEPTH FOR #6-32 FHSCS (3 LOC)

QTY	DWG/PART NUMBER	DESCRIPTION	MATERIAL
1	TIUAM213	UPPER ABDOMEN STRING POT. MOUNTING BRACKET	6061-T6 AL
1		QUANTITY FOR ENTIRE DUMMY	
1		QUANTITY FOR ENTIRE DUMMY	

UNLESS OTHERWISE SPECIFIED DIMENSIONS ARE IN INCHES	ADDITIONAL HARDWARE NEEDED FOR ASSEMBLY
Engineered: J. FULLERTON	DATE: 5/6/96
Drawn: J. FULLERTON	DATE: 5/6/96
Checked: J. FULLERTON	DATE: 5/6/96
Scale: 1=1	SIZE: C
Hole Dia. ± .002	REVISION: 1
* DO NOT SCALE DRAWING *	

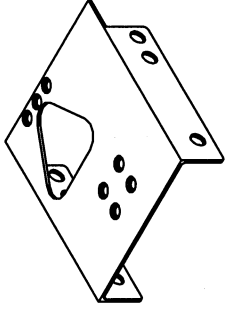
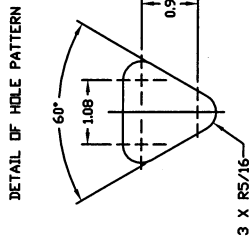
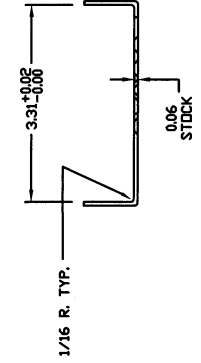
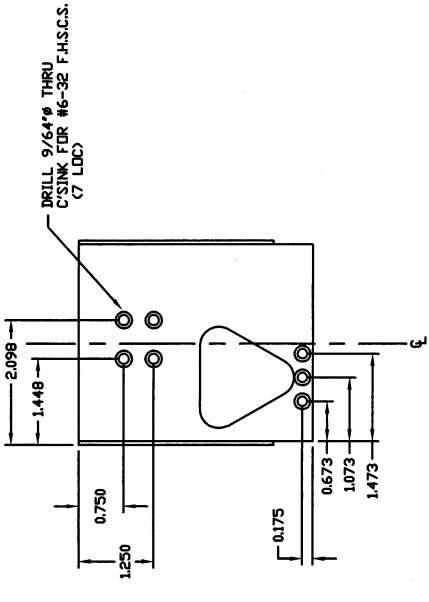
DEPARTMENT OF TRANSPORTATION
NHTSA
CONTRACT NO.: DTMB 22-94-C-07010
DESIGNED BY: GRSAC, INC.
125 ORCHARD DRIVE BOWLING GREEN, MO 2713

DRAWING TITLE: UPPER ABDOMEN STRING POT. MOUNTING BRACKET	Page: 1/1
DRAWING NUMBER: TIUAM213	

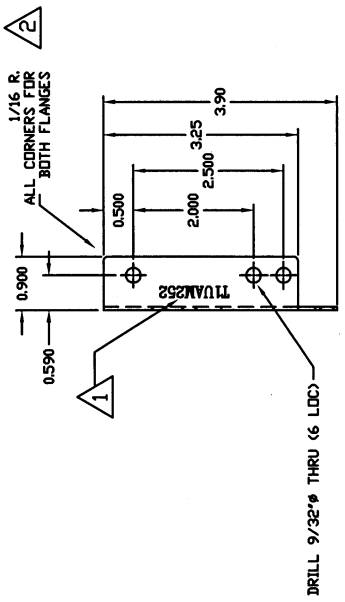
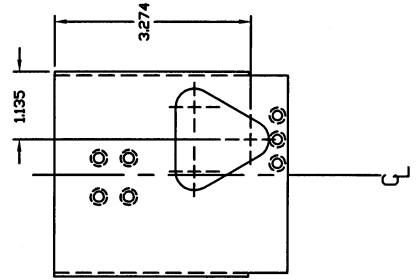
NOTE: ENGRAVE THE DWG# TIUAM213 AT THE LOCATION SPECIFIED ABOVE.



16	15	14	13	12	11	10	9	8	7	6	5	4	3	2	1
J	I	H	G	F	E	D	C	B	A						



NTS



- NOTES:
- 1 ENGRAVE THE DWG. # TIUAM252 AT LOCATION SPECIFIED ABOVE.
 - 2 BREAK ALL EDGES

REV. #	ZONE	DESCRIPTION	DATE	BY
1	F-611	REMOVE MATL FOR CLEARANCE W/CRUX	5/7/98	J. McDONALD
2	F-611	REMOVE ITEM NO. 2 FROM DRAWING TIUAM250	6/16/98	J. McDONALD
3	GLOBAL	CLARIFICATION OF DIMENSIONS AND CALLOUTS	5/15/98	D. BRACK
4		TITLE BLOCK	6/16/98	J. POLAND
5	6-3	CORRECTED HOLE DIMENSION TO ALLOW FOR FABRIC	9/2/98	D. BRACK
6	7B	ADDED TOLERANCE TO 3.31"	11/19/98	M. ARTS
7	8B	SMOOTHED THE SHAPE OF THE THIRD HOLE	11/19/98	M. ARTS
	3, 5, 6	PART FLANGE DEPTH CHANGED FROM 1.00 TO .90	12/10/98	J. McDONALD

QTY	DWG/PART NUMBER	DESCRIPTION	MATERIAL
1	TIUAM252	UPPER ABDOMEN INTERNAL MOUNT PLATE FRONT	1018 CRS
1	TIUAM252	UPPER ABDOMEN INTERNAL MOUNT PLATE FRONT	1018 CRS

ADDITIONAL HARDWARE NEEDED FOR ASSEMBLY	DATE: 07/09/98
DEPARTMENT OF TRANSPORTATION	
NHTSA	
CONTRACT NO.: DTMB 98-04-C-07010	
DESIGNED BY: GESAC, INC.	
DATE: 07/09/98	
SCALE: 1=1	
SIZE: D	
REVISION: 7	
QUANTITY FOR AN ASSEMBLY: 1	
QUANTITY FOR ENTIRE DUMMY: 1	
DRAWING TITLE: UPPER ABDOMEN INTERNAL MOUNT PLATE FRONT	
DRAWING NUMBER: TIUAM252	
PAGE: 1/1	