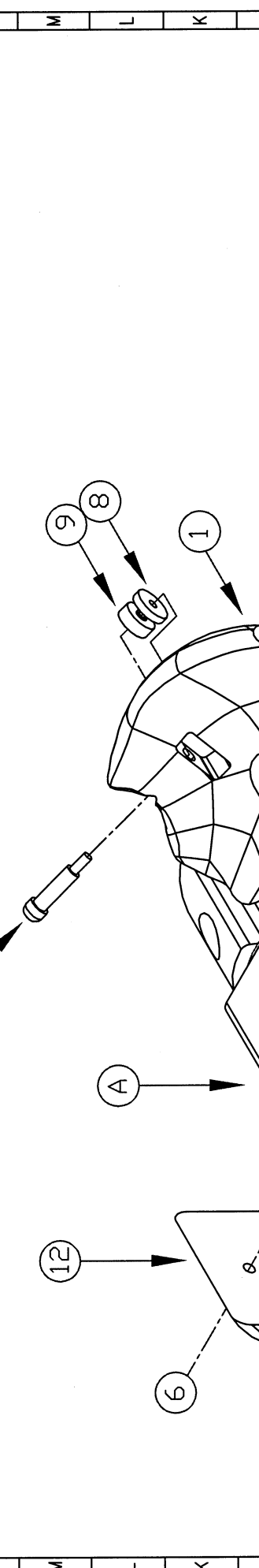


P O N M L K J I H G F E D C B A

REV. #	ZONE	DESCRIPTION	DATE	BY
1	-	ADDED LOCATION OF ADJUSTMENT ROD HOLE	9/5/97	D. BRACH
2	GLOBAL	UPDATED DRAWING FOR RELEASE 2.0	5/7/99	D. BRACH
3	ITEM 3	CHANGED LENGTH	5/10/99	D. BRACH
4	-	CHANGED RETAINING RING BOLT PATTERN	7/19/99	J. McDONALD
5	-	UPDATED WITH ROTATED ACCELEROMETER MOUNTING	5/4/01	J. McDONALD
6	NOTES	RE-NUMBERED NOTES AND ADDED NOTE 2	5/4/01	M. ARTIS
7	ITEM 3	ADDED ITEM 7; 1/4"-28 X 5/8 BHSCS	10/05/01	M. ARTIS
8	GLOBAL	CHANGED BOLT LENGTH FROM 3/4 TO 7/8	11/28/02	C. SPADRE
9	GLOBAL	UPDATED TO NT AND EXPLODED ASSEMBLY	1/12/05	J. McDONALD
9	PARTS LIST	ADDED ITEM 15	1/20/05	J. McDONALD



REV. #	QTY	DWG/PART NUMBER	DESCRIPTION	MATERIAL
15	6	MCM# 98381A541	Ø.25 X .875" DOWEL PIN	PURCHASED
14	2	MCM# 91253A108	# 4-40 X 3/8" F.H.S.C.S	PURCHASED
13	1	TIPLM111	PELVIS ACCELEROMETER COVER	6061-T6
12	1	TIPLM219	MACHINED FRONT PELVIC CASTING	RP 6430 URETHANE
11	2	TIPLM018	ILIAC LOAD CELL PLUNGER	440 C SS
10	2	MCM # 98381A470	Ø.125 X .375" DOWEL PIN	PURCHASED
9	2	TIPLM410	ILIAC LOAD CELL	PURCHASED
8	2	TIPLM017	ILIAC LOAD CELL WASHER	440 C SS
7	2	TIPLM019	H-PT TOOL BEARING	986 BRONZE
6	2	MCM# 91253A001	#10-32UNF X .375" F.H.S.C.S	PURCHASED
5	4	MCM# 91253A539	Ø.25-20UNC X .625" F.H.S.C.S	PURCHASED
4	4	MCM# 91253A538	Ø.25-20UNC X .875" F.H.S.C.S	PURCHASED
3	2	MCM# 91253A542	Ø.25-20UNC X 1" F.H.S.C.S	PURCHASED
2	1	TIPLM011	PELVIS WING MACHINED (LEFT)	CAST AL.
1	1	TIPLM012	PELVIS WING MACHINED (RIGHT)	CAST AL.
A	1	TIPLM001	PELVIS MAIN SUBASSEMBLY	SEE DWG.
REV. #	QTY	DWG/PART NUMBER	DESCRIPTION	MATERIAL

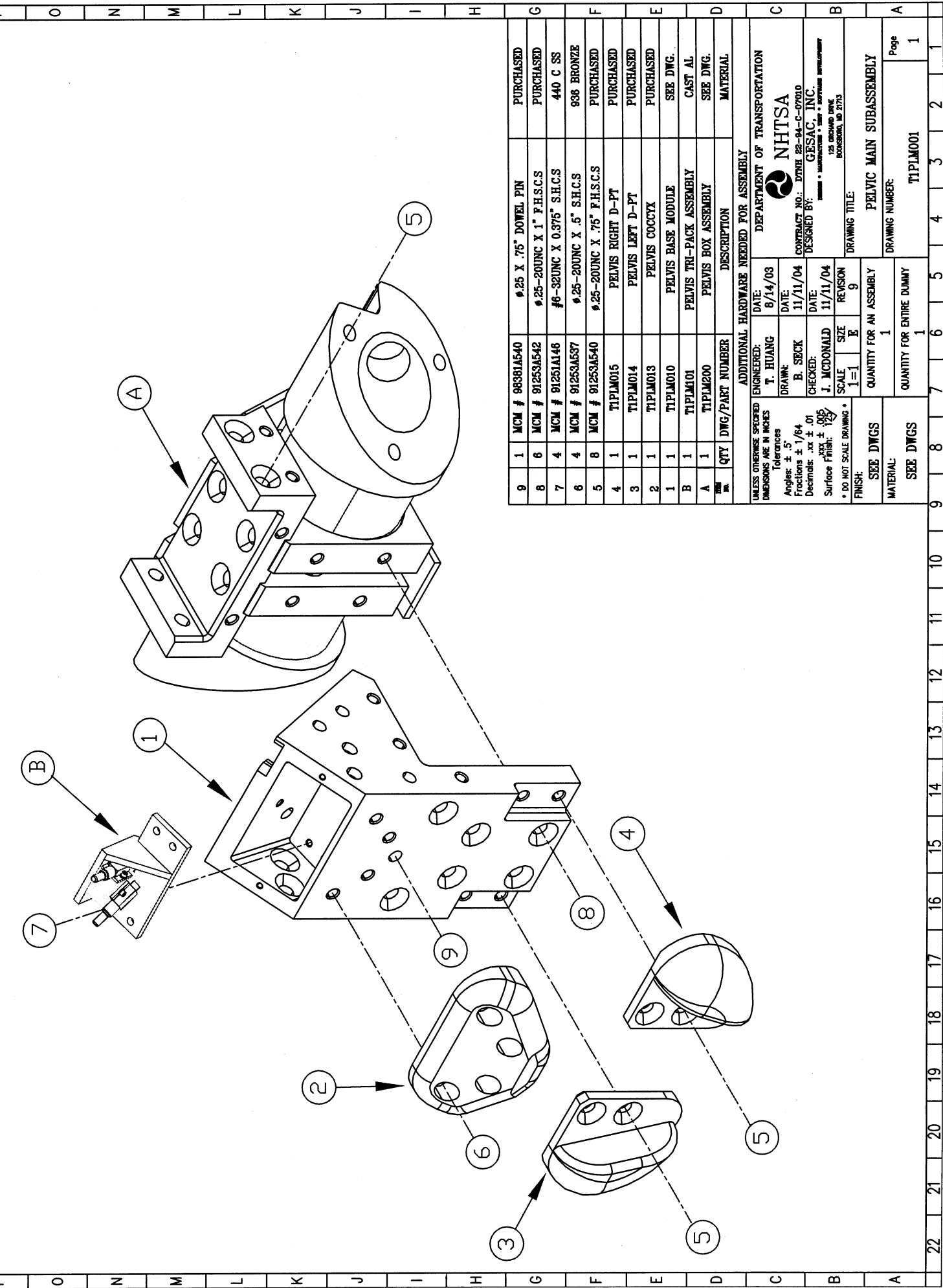
ADDITIONAL HARDWARE NEEDED FOR ASSEMBLY	
ENGINEER:	T. HUANG
DATE:	8/14/03
DRAWN:	B. SECK
DATE:	11/11/04
CHECKED:	J. McDONALD
DATE:	11/11/04
SURFACE FINISH:	XXX ± .005
SCALE:	1=1
FINISH:	SEE DWGS
QUANTITY FOR AN ASSEMBLY:	1
QUANTITY FOR ENTIRE DUMMY:	1

UNLESS OTHERWISE SPECIFIED DIMENSIONS ARE IN INCHES	
Tolerances	Angles: ± .5°
Fractions: ± 1/64	Decimals: .xx ± .01
Surface Finish: 125	* DO NOT SCALE DRAWING *
<p>DEPARTMENT OF TRANSPORTATION  <b>NHTSA</b>          CONTRACT NO.: DTMB 22-94-C-07010          DESIGNED BY: GESAC, INC.  <small>MANUFACTURED BY: PELVIS MECHANICAL ASSEMBLY          125 ORCHARD DRIVE          ROCKSBORO, MD 27153</small></p>	
DRAWING TITLE: PELVIS MECHANICAL ASSEMBLY	
DRAWING NUMBER: TIPLM000	
Page 1/2	

22 21 20 19 18 17 16 15 14 13 12 11 10 9 8 7 6 5 4 3 2 1

P O N M L K J I H G F E D C B A

22 21 20 19 18 17 16 15 14 13 12 11 10 9 8 7 6 5 4 3 2 1



REV. #	ZONE	DESCRIPTION	DATE	BY

QTY	DWG/PART NUMBER	DESCRIPTION	MATERIAL
1	MCM # 98381A540	Ø.25 X .75" DOWEL PIN	PURCHASED
6	MCM # 91253A542	Ø.25-20UNC X 1" F.H.S.C.S	PURCHASED
4	MCM # 91251A146	#6-32UNC X 0.375" S.H.C.S	440 C SS
4	MCM # 91253A537	Ø.25-20UNC X .5" S.H.C.S	986 BRONZE
8	MCM # 91253A540	Ø.25-20UNC X .75" F.H.S.C.S	PURCHASED
1	TIPLM015	PELVIS RIGHT D-PT	PURCHASED
1	TIPLM014	PELVIS LEFT D-PT	PURCHASED
1	TIPLM013	PELVIS COCCYX	PURCHASED
1	TIPLM010	PELVIS BASE MODULE	SEE DWG.
1	TIPLM011	PELVIS TRI-PACK ASSEMBLY	CAST AL.
1	TIPLM200	PELVIS BOX ASSEMBLY	SEE DWG.

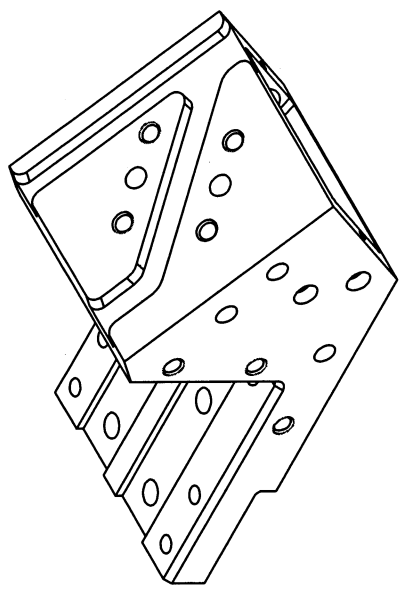
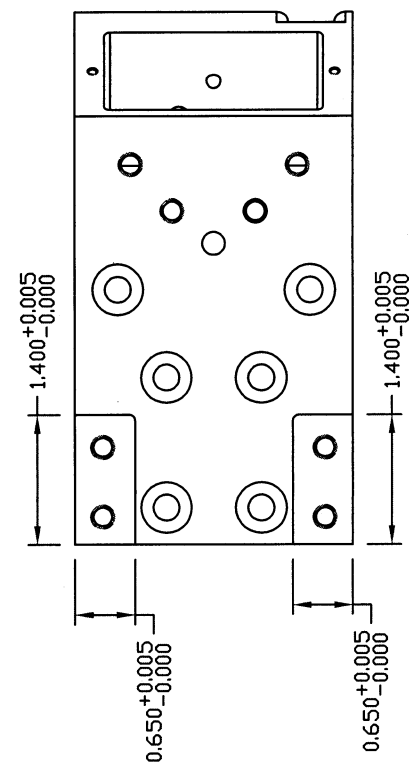
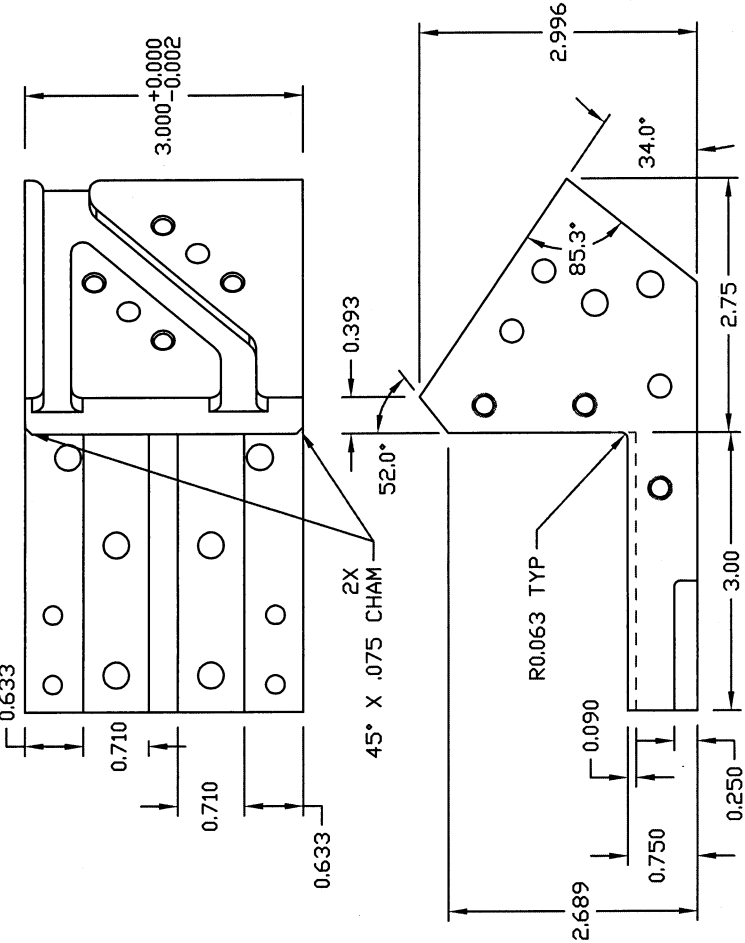
ADDITIONAL HARDWARE NEEDED FOR ASSEMBLY	
ENGINEERED:	DATE: 8/14/03
T. HUANG	
DRAWN:	DATE: 11/11/04
B. SECK	
CHECKED:	DATE: 11/11/04
J. McDONALD	
SCALE:	SIZE: B
1=1	REVISION: 9
FINISH:	
SEE DWGS	QUANTITY FOR AN ASSEMBLY: 1
MATERIAL:	QUANTITY FOR ENTIRE DUMMY: 1
SEE DWGS	

UNLESS OTHERWISE SPECIFIED:  
DIMENSIONS ARE IN INCHES  
Tolerances  
Angles: ± .5°  
Fractions: ± 1/64  
Decimals: .xx ± .01  
Surface Finish: 125  
\* DO NOT SCALE DRAWING \*

DEPARTMENT OF TRANSPORTATION  
**NHTSA**  
CONTRACT NO.: DTNH 22-94-C-07010  
DESIGNED BY: GESAC, INC.  
125 ORCHARD DRIVE  
ROCKSBORO, MD 21773

DRAWING TITLE: PELVIC MAIN SUBASSEMBLY  
DRAWING NUMBER: TIPLM001  
Page 1 of 1

10	9	8	7	6	5	4	3	2	1
H	G	F	E	D	C	B	A		



- NOTES:
- 1 T1PLM010-1 - BASIC GEOMETRY
  - 2 T1PLM010-2 - GEOMETRY & HOLE PATTERN ON THE TOP.
  - 3 T1PLM010-3 - HOLE PATTERN ON THE SIDE & BOTTOM.
  - 4 T1PLM010-4 - GEOMETRY & HOLE PATTERN ON THE REAR.
  - 5 BREAK ALL SHARP EDGES.

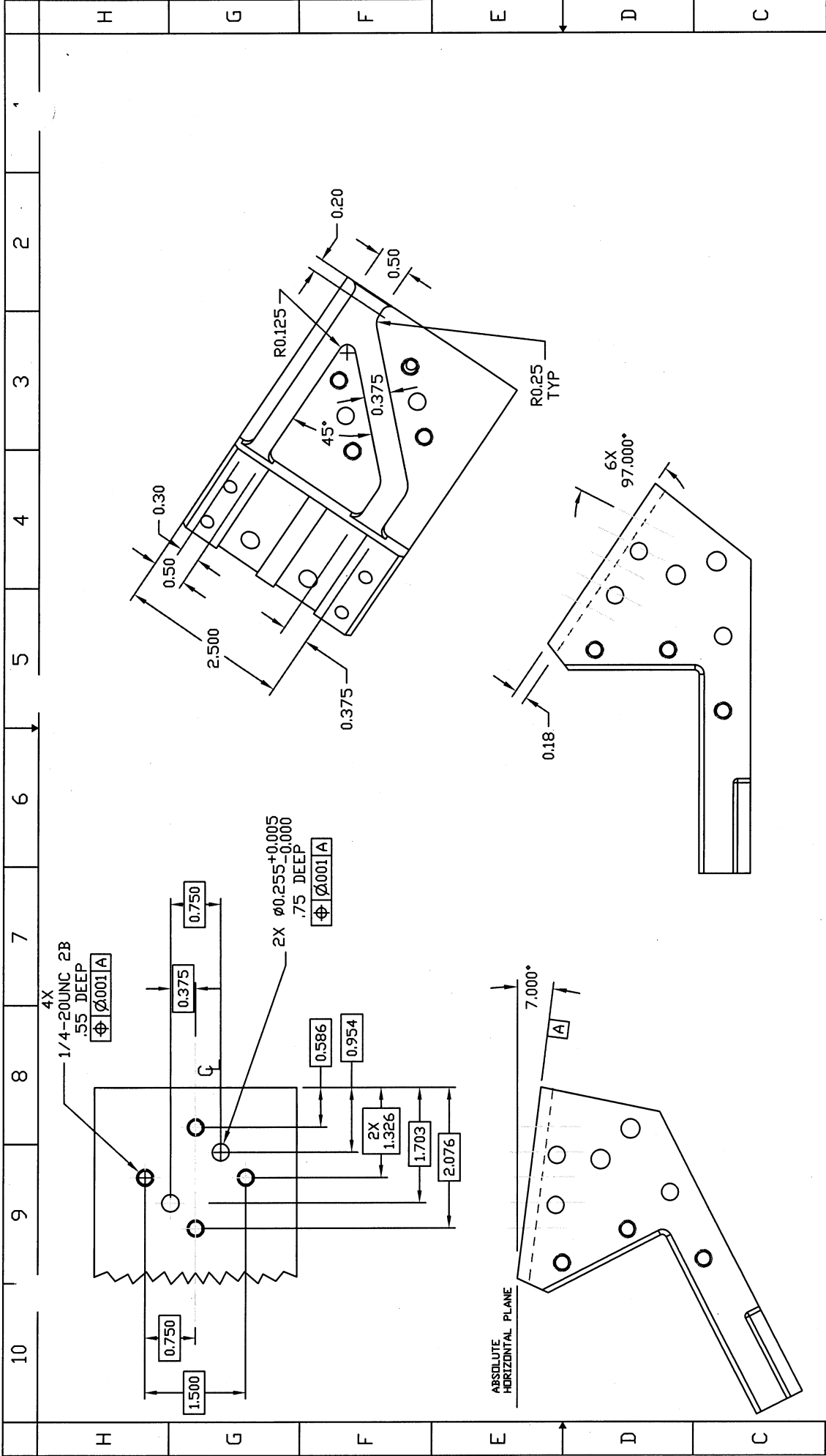
REV. #	ZONE	DESCRIPTION	DATE	BY
B0	GLOBAL	THESE DWG REPLACE T1PLM010-1,2,3,4_X0 & R8	4/28/04	M. ARTIS
B1	PG 4 ET	CHANGED R.063 TO R 1/8	5/4/04	M. ARTIS
B2	PG 2 9/G	CHANGED #.281 TO #.255	1/14/06	J. McDONALD

QTY	DWG/PART NUMBER	DESCRIPTION	MATERIAL
1		ADDITIONAL HARDWARE NEEDED FOR ASSEMBLY	
UNLESS OTHERWISE SPECIFIED		DATE: 9/16/03	
DIMENSIONS ARE IN INCHES		ENGINEERED: T.J. HUANG	
Tolerances		DATE: 9/16/03	
Angles: ± .5°		DRAWN: T.J. HUANG	
Fractions: ± 1/64		CHECKED: T.J. HUANG	
Decimals: .xxx ± .005		DATE: 9/16/03	
Surface Finish: 125/		SCALE: 1=1	
* DO NOT SCALE DRAWING *		SIZE: C	
FINISH: TEFLON		REVISION: B2	
MATERIAL: 1018 CRS		QUANTITY FOR AN ASSEMBLY: 1	
		QUANTITY FOR ENTIRE DUMMY: 1	
		DRAWING NUMBER: T1PLM010-1	

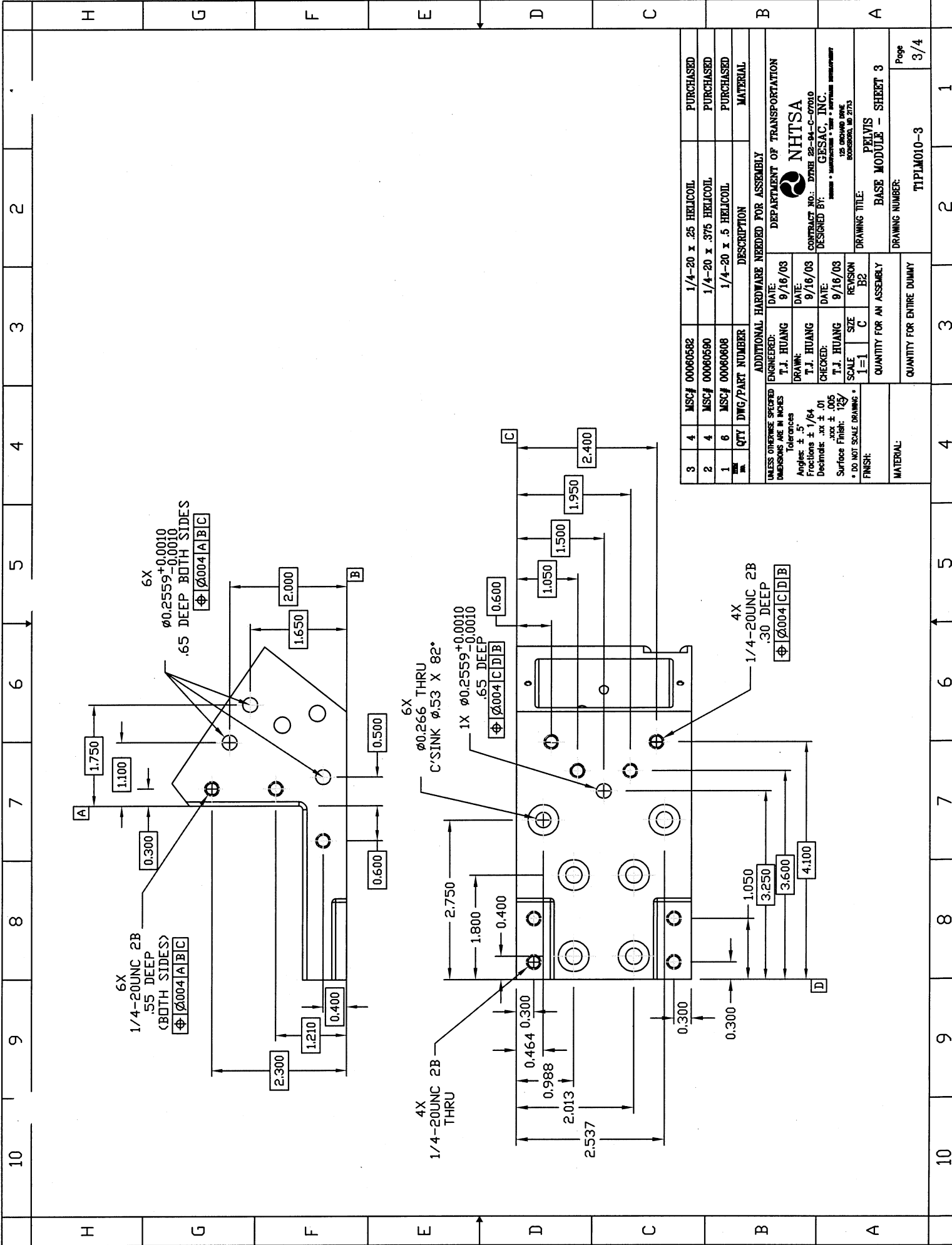
DEPARTMENT OF TRANSPORTATION  
**NHTSA**  
 CONTRACT NO.: DTFR 22-94-C-07010  
 DESIGNED BY: GESAC, INC.  
125 ORCHARD DRIVE  
 BOZEMAN, MD 2713

DRAWING TITLE: PELVIS BASE MODULE - SHEET 1

Page 1/4



QTY	DWG/PART NUMBER	DESCRIPTION	MATERIAL
UNLESS OTHERWISE SPECIFIED DIMENSIONS ARE IN INCHES			
ENGINEERED:	T.J. HUANG	DATE: 9/16/03	ADDITIONAL HARDWARE NEEDED FOR ASSEMBLY
DRAWN:	T.J. HUANG	DATE: 9/16/03	DEPARTMENT OF TRANSPORTATION
CHECKED:	T.J. HUANG	DATE: 9/16/03	NHTSA
SCALE:	1=1	SIZE: C	CONTRACT NO.: DTRH 22-94-C-07010
FINISH:	DO NOT SCALE DRAWING		DESIGNED BY: GESAC, INC.
REVISION:	B2	REVISION: B2	125 ORCHARD DRIVE ROCKFORD, IL 61103
QUANTITY FOR AN ASSEMBLY:	QUANTITY FOR ENTIRE DUMMY		DRAWING TITLE: PELVIS BASE MODULE - SHEET 2
MATERIAL:		DRAWING NUMBER: TIPLM010-2	
		Page 2/4	



QTY	DWG/PART NUMBER	DESCRIPTION	MATERIAL	
3	4	MSC# 00060582	1/4-20 x .25 HELICOIL	PURCHASED
2	4	MSC# 00060590	1/4-20 x .375 HELICOIL	PURCHASED
1	6	MSC# 00060608	1/4-20 x .5 HELICOIL	PURCHASED
				MATERIAL

ADDITIONAL HARDWARE NEEDED FOR ASSEMBLY	
ENGINEERED:	DATE: 9/16/03
T.J. HUANG	
DRAWN:	DATE: 9/16/03
T.J. HUANG	
CHECKED:	DATE: 9/16/03
T.J. HUANG	
SCALE:	SIZE: C
1=1	REVISION: B2
QUANTITY FOR AN ASSEMBLY	
MATERIAL:	

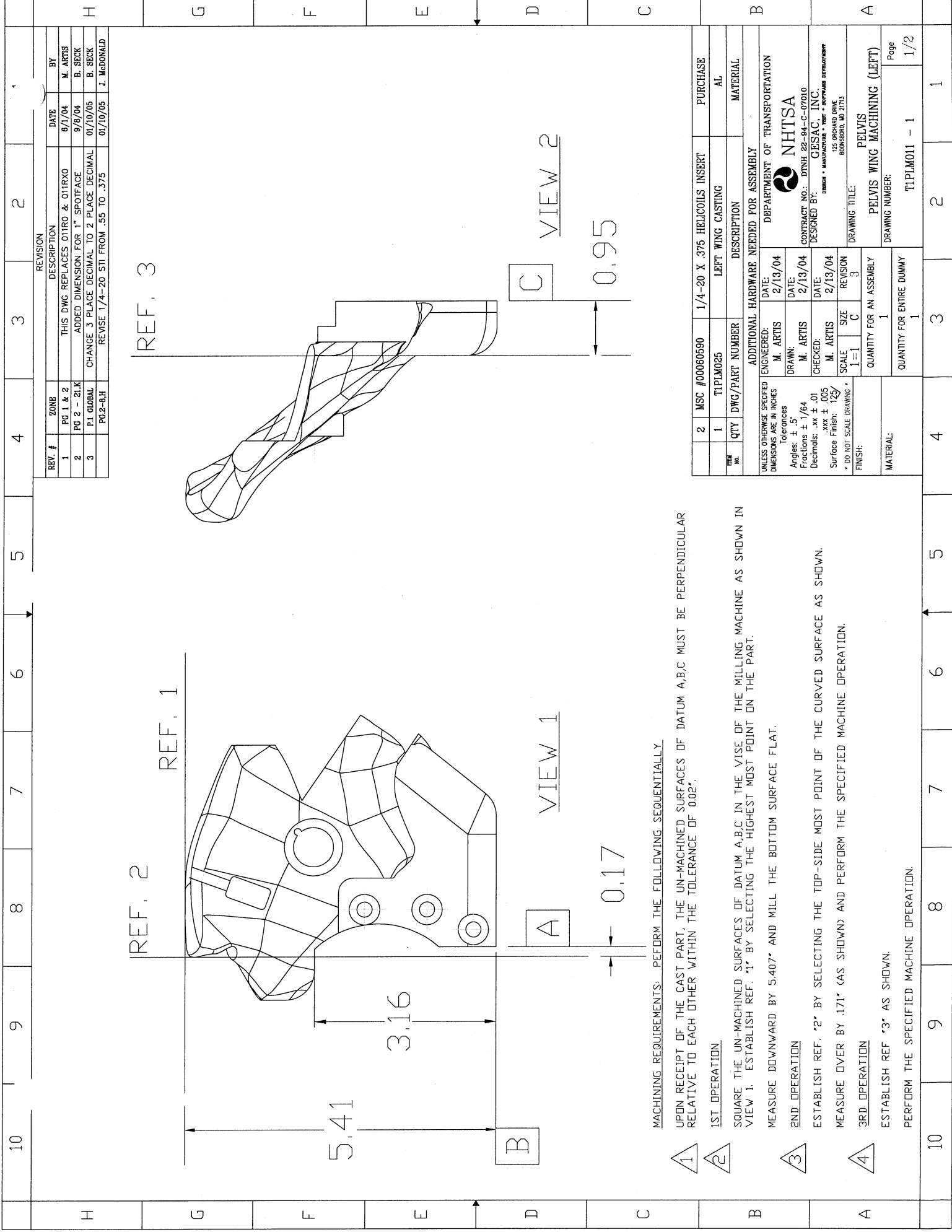
  

UNLESS OTHERWISE SPECIFIED	
DIMENSIONS ARE IN INCHES	
Tolerances	
Angles:	$\pm .5^\circ$
Fractions:	$\pm 1/64$
Decimals:	.xx $\pm .01$
Surface Finish:	125/
* DO NOT SCALE DRAWING *	

DEPARTMENT OF TRANSPORTATION	
NHTSA	
CONTRACT NO.: DTMB 22-84-C-07010	
DESIGNED BY: GESAC, INC.	
125 ORCHARD DRIVE	
ROCKFORD, MD 2715	
DRAWING TITLE: PELVIS	
BASE MODULE - SHEET 3	
DRAWING NUMBER:	TIPLM010-3
QUANTITY FOR ENTIRE DUMMY	3
Page	3/4





REV. #	ZONE	DESCRIPTION	DATE	BY
1	PG 1 & 2	THIS DWG REPLACES 011R0 & 011R0	6/1/04	M. ARTIS
2	PG 2 - 21,K	ADDED DIMENSION FOR 1" SPOTFACE	9/9/04	B. SECK
3	P.1 GLOBAL	CHANGE 3 PLACE DECIMAL TO 2 PLACE DECIMAL	01/10/05	B. SECK
	PG.2-8,H	REVISE 1/4-20 STI FROM .55 TO .375	01/10/05	J. McDONALD

REV. NO.	QTY	DWG/PART NUMBER	DESCRIPTION	MATERIAL
2	MSC #00060590	1/4-20 X .375 HELICOILS INSERT		PURCHASE
1	TIPLM025	LEFT WING CASTING		AL

UNLESS OTHERWISE SPECIFIED DIMENSIONS ARE IN INCHES		Tolerances	
Angles:	± .5°	Drawn:	M. ARTIS
Fractions:	± 1/64	Checked:	M. ARTIS
Decimals:	.xx ± .005	Scale:	1=1 C
Surface Finish:	125/	Revision:	3
• DD 101 SCALE DRAWING		Quantity for an assembly:	1
FINISH:		Quantity for entire dummy:	1

MSC #	QTY	DESCRIPTION	PURCHASE
MSC #00060590	1	1/4-20 X .375 HELICOILS INSERT	PURCHASE

**MACHINING REQUIREMENTS: PERFORM THE FOLLOWING SEQUENTIALLY**

UPON RECEIPT OF THE CAST PART, THE UN-MACHINED SURFACES OF DATUM A,B,C MUST BE PERPENDICULAR RELATIVE TO EACH OTHER WITHIN THE TOLERANCE OF 0.02".

**1ST OPERATION**

SQUARE THE UN-MACHINED SURFACES OF DATUM A,B,C IN THE VISE OF THE MILLING MACHINE AS SHOWN IN VIEW 1. ESTABLISH REF. \*1\* BY SELECTING THE HIGHEST MOST POINT ON THE PART.

MEASURE DOWNWARD BY 5.407" AND MILL THE BOTTOM SURFACE FLAT.

**2ND OPERATION**

ESTABLISH REF. \*2\* BY SELECTING THE TOP-SIDE MOST POINT OF THE CURVED SURFACE AS SHOWN. MEASURE OVER BY .171" (AS SHOWN) AND PERFORM THE SPECIFIED MACHINE OPERATION.

**3RD OPERATION**

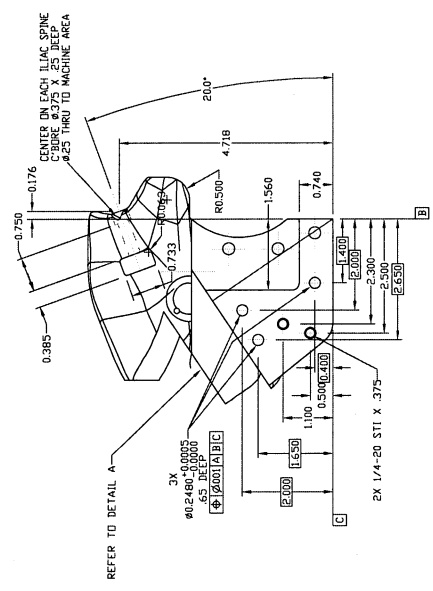
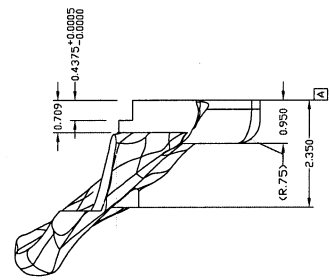
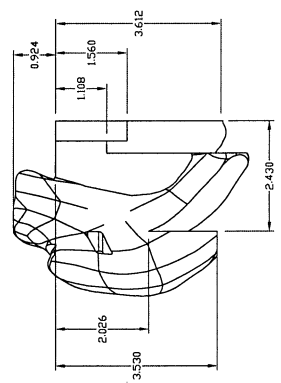
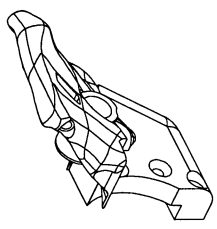
ESTABLISH REF \*3\* AS SHOWN. PERFORM THE SPECIFIED MACHINE OPERATION.

DEPARTMENT OF TRANSPORTATION  
**NHTSA**  
 CONTRACT NO.: DTNH 22-94-C-07010  
 DESIGNED BY: GRSAC, INC.  
 125 ORCHARD DRIVE  
 BOWERSVILLE, MD 21713

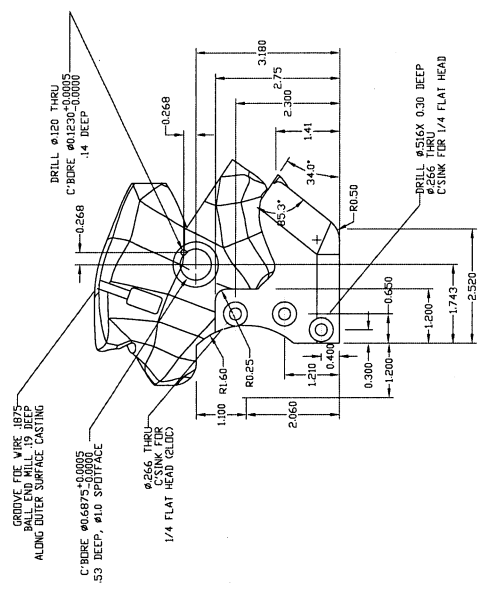
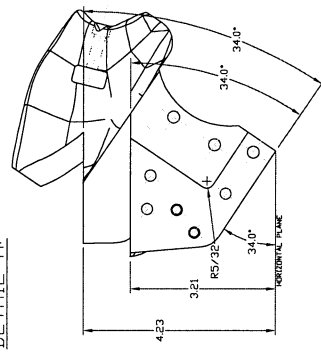
DRAWING TITLE: PELVIS WING MACHINING (LEFT)  
 DRAWING NUMBER: TIPLM011 - 1  
 Page 1/2

P O N M L K J I H G F E D C B A

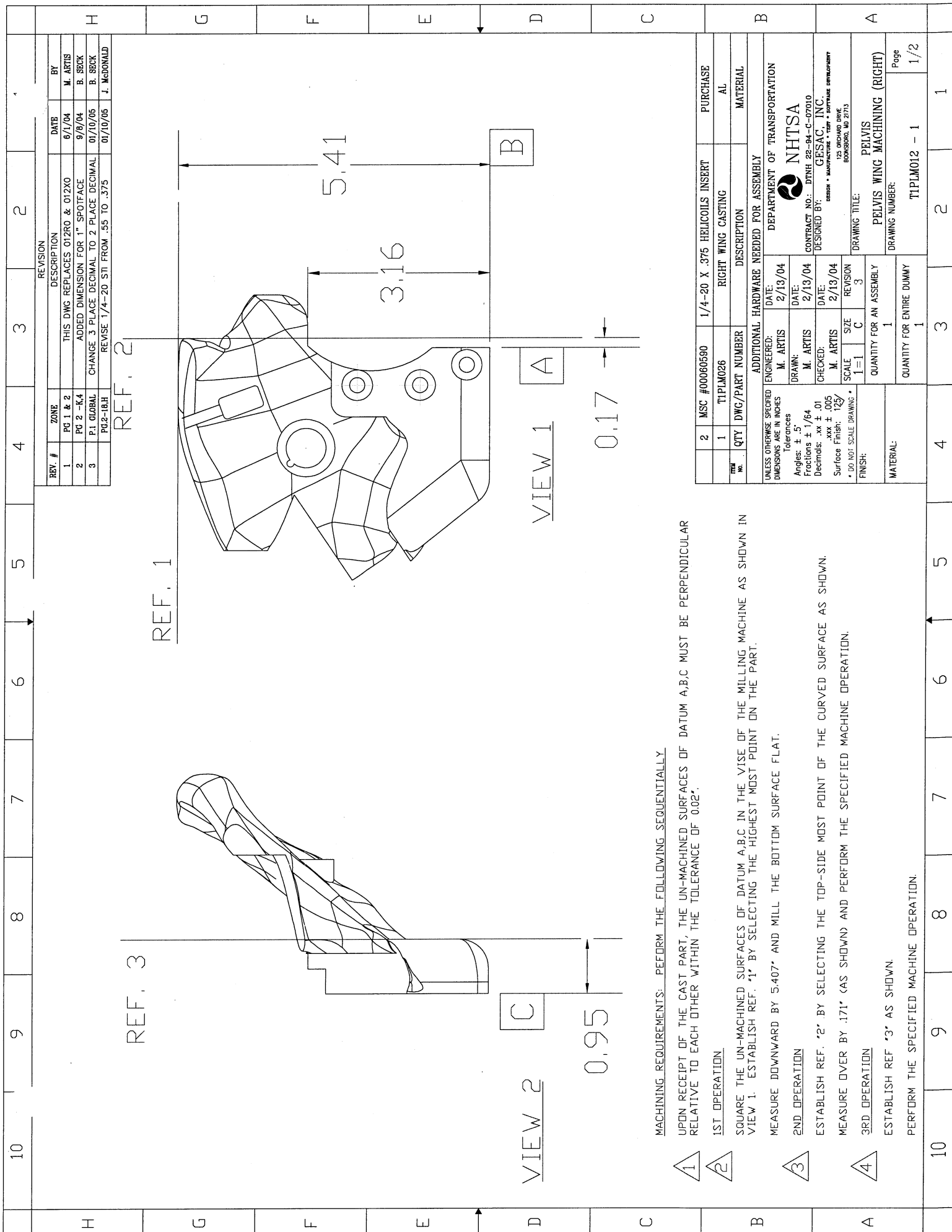
ITEM NO.	QTY	DWG/PART NUMBER	DESCRIPTION	MATERIAL
ADDITIONAL HARDWARE NEEDED FOR ASSEMBLY				
UNLESS OTHERWISE SPECIFIED DIMENSIONS ARE IN INCHES		ENGINEERED: TJ HUANG	DATE: 9/15/03	DEPARTMENT OF TRANSPORTATION <b>NHTSA</b> CONTRACT NO.: DTNH 22-94-C-07010 DESIGNED BY: GESAC, INC. DIVISION • MANUFACTURE • TEST • SOFTWARE DEVELOPMENT 125 ORCHARD DRIVE BOONSHORO, MD 2713
Tolerances		DRAWN: TJ HUANG	DATE: 9/15/03	
Angles: ± .5°		CHECKED: STAFF	DATE: 5/27/03	
Fractions: ± 1/64		SCALE: 1 = 1	REVISION: 3	
Decimals: .xx ± .01		SIZE: E	QUANTITY FOR AN ASSEMBLY: 1	
Surface Finish: 125		FINISH: * DO NOT SCALE DRAWING *		QUANTITY FOR ENTIRE DUMMY: 1
MATERIAL:		DRAWING TITLE: PELVIS WING MACHINING (LEFT)		Page 2/2
MATERIAL:		DRAWING NUMBER: T1PLM011-2		1



DETAIL A:







REV. #	ZONE	DESCRIPTION	DATE	BY
1	PG 1 & 2	THIS DWG REPLACES 012RO & 012X0	01/04	M. ARTIS
2	PG 2 -K4	ADDED DIMENSION FOR 1" SPOTFACE	09/04	B. SECK
3	P.I GLOBAL	CHANGE 3 PLACE DECIMAL TO 2 PLACE DECIMAL	01/10/05	B. SECK
	PG.2-18.H	REVISE 1/4-20 STI FROM .55 TO .375	01/10/05	J. McDONALD

REF. 2

REF. 1

REF. 3

VIEW 2

VIEW 1

MACHINING REQUIREMENTS: PERFORM THE FOLLOWING SEQUENTIALLY.

UPON RECEIPT OF THE CAST PART, THE UN-MACHINED SURFACES OF DATUM A,B,C MUST BE PERPENDICULAR RELATIVE TO EACH OTHER WITHIN THE TOLERANCE OF 0.02°.

1ST OPERATION

SQUARE THE UN-MACHINED SURFACES OF DATUM A,B,C IN THE VISE OF THE MILLING MACHINE AS SHOWN IN VIEW 1. ESTABLISH REF. \*1\* BY SELECTING THE HIGHEST MOST POINT ON THE PART.

MEASURE DOWNWARD BY 5.407" AND MILL THE BOTTOM SURFACE FLAT.

2ND OPERATION

ESTABLISH REF. \*2\* BY SELECTING THE TOP-SIDE MOST POINT OF THE CURVED SURFACE AS SHOWN.

MEASURE OVER BY .171" (AS SHOWN) AND PERFORM THE SPECIFIED MACHINE OPERATION.

3RD OPERATION

ESTABLISH REF \*3\* AS SHOWN.

PERFORM THE SPECIFIED MACHINE OPERATION.

2	MSC #00060590	1/4-20 X .375 HELICOILS INSERT	PURCHASE
1	TIPLM026	RIGHT WING CASTING	AL
QTY	DWG/PART NUMBER	DESCRIPTION	MATERIAL
ADDITIONAL HARDWARE NEEDED FOR ASSEMBLY			
DEPARTMENT OF TRANSPORTATION			
NHTSA			
ENGINEERED:	M. ARTIS	DATE:	2/13/04
DRAWN:	M. ARTIS	DATE:	2/13/04
CHECKED:	M. ARTIS	DATE:	2/13/04
CONTRACT NO.: DPHH 22-94-C-07010			
DESIGNED BY: GESAC, INC.			
DESIGN • MANUFACTURE • TEST • SOFTWARE DEVELOPMENT			
125 ORCHARD DRIVE			
BOWLING GREEN, MO 2713			
DRAWING TITLE:			
PELVIS			
QUANTITY FOR AN ASSEMBLY			
1			
PELVIS WING MACHINING (RIGHT)			
DRAWING NUMBER:			
TIPLM012 - 1			
Page			
1/2			

1

2

3

4

10

9

8

7

6

5

4

3

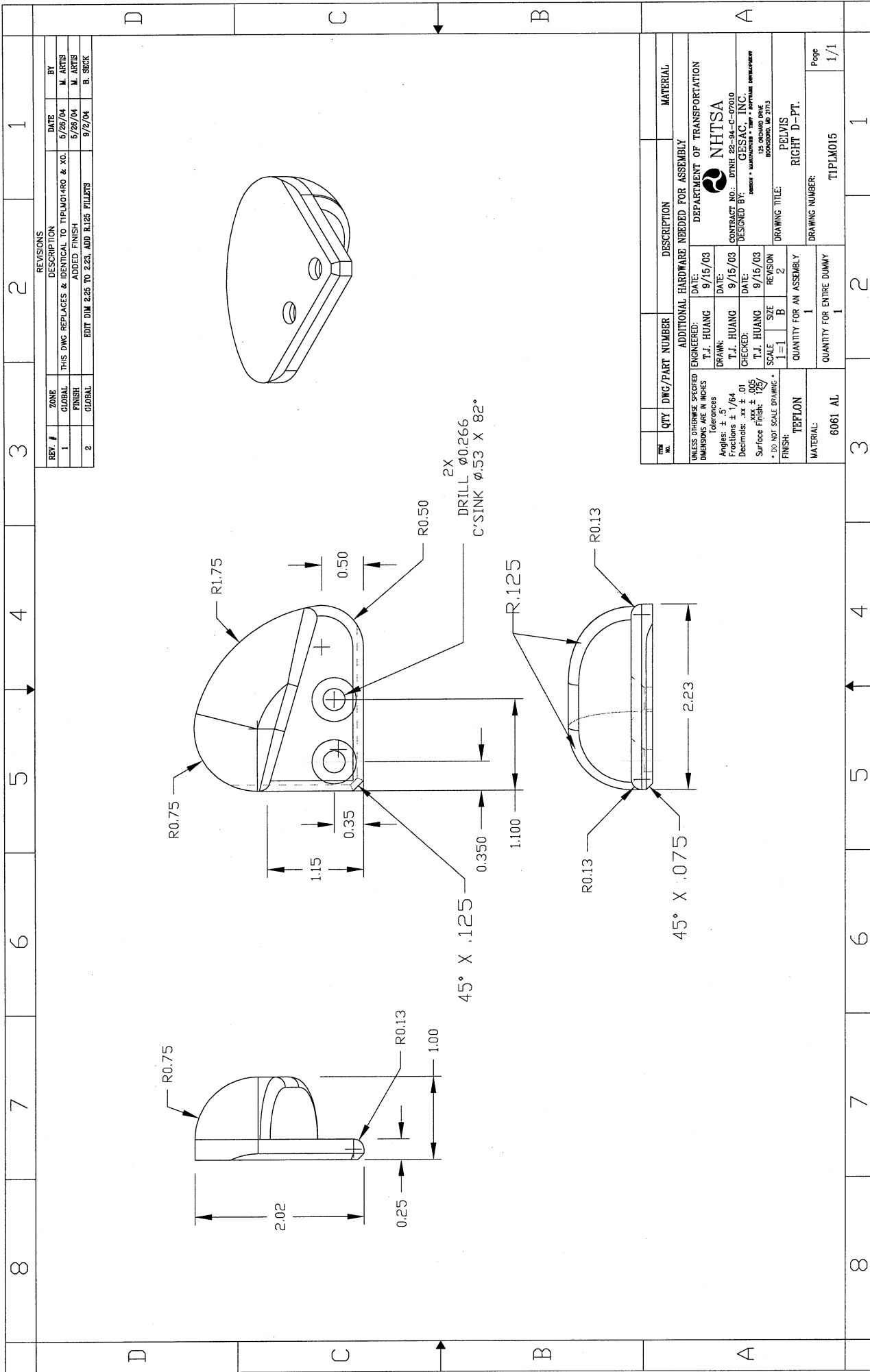
2

1



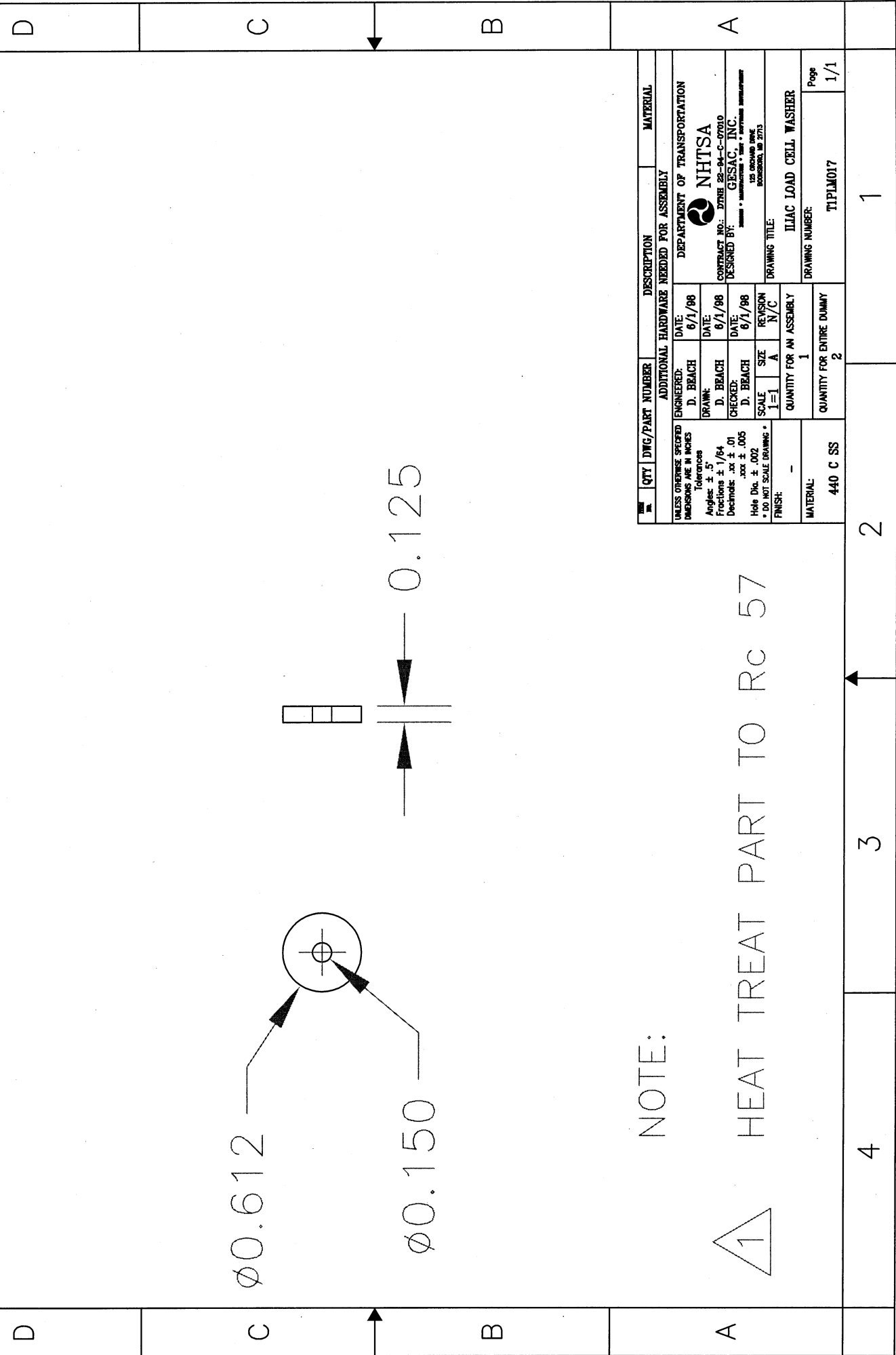




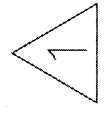


4	3	2	1
---	---	---	---

REV. #	ZONE	DESCRIPTION	DATE	BY



NOTE:



QTY	DWG/PART NUMBER	DESCRIPTION	MATERIAL

UNLESS OTHERWISE SPECIFIED DIMENSIONS ARE IN INCHES	ENGINEERED: D. BEACH DATE: 6/1/98	DEPARTMENT OF TRANSPORTATION NHTSA
Tolerances Angles: $\pm .5^\circ$ Fractions: $\pm 1/64$ Decimals: $.xx \pm .01$ $.xxx \pm .005$ Hole Dia: $\pm .002$ * DO NOT SCALE DRAWING *	DRAWN: D. BEACH DATE: 6/1/98	CONTRACT NO.: DTMB 22-94-C-07010 DESIGNED BY: GESAC, INC. 122 ORCHARD DRIVE ROCKFORD, IL 61153
	CHECKED: D. BEACH DATE: 6/1/98	
	SCALE: 1=1 SIZE: A	
	REVISION: N/C	
	QUANTITY FOR AN ASSEMBLY: 1	DRAWING TITLE: ILLIAC LOAD CELL WASHER
	QUANTITY FOR ENTIRE DUMMY: 2	DRAWING NUMBER: T1PLM017
MATERIAL: 440 C SS		Page: 1/1

4	3	2	1
---	---	---	---

4

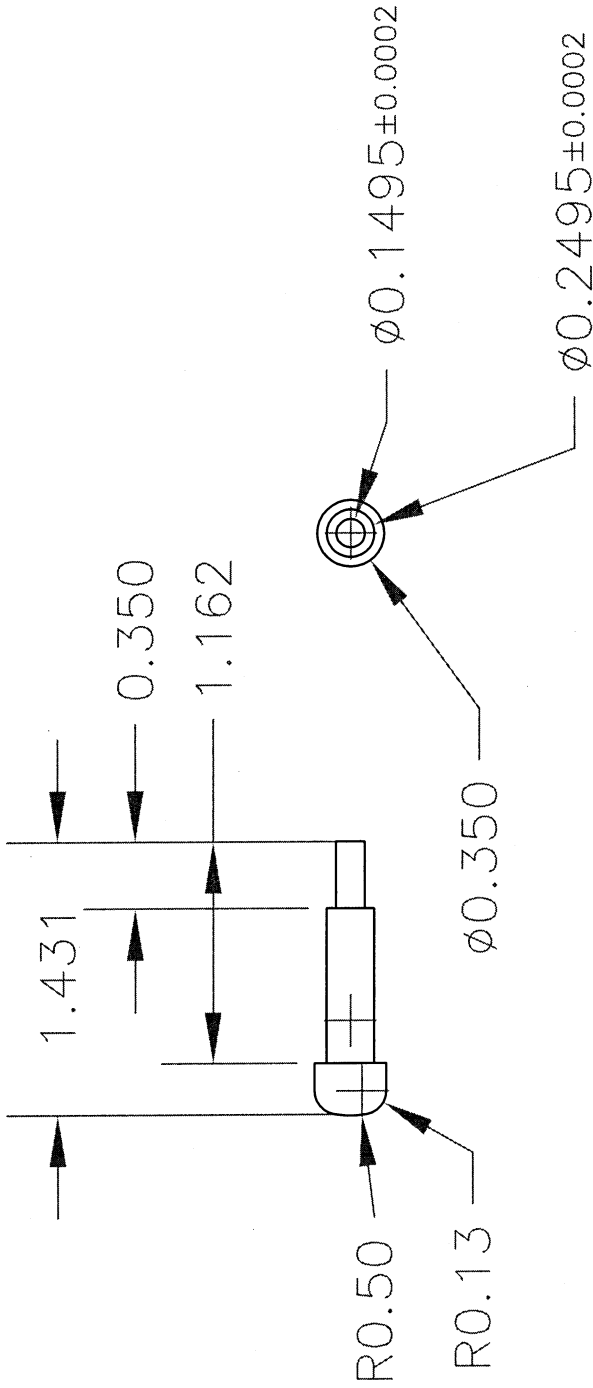
3

2

1



NTS



NOTE:

HEAT TREAT PART TO Rc 57

POLISH SHAFT TO CORRECT DIAMETER

AFTER HEAT TREATING



D

C

B

A

REV. #	ZONE	DESCRIPTION	DATE	BY
1	SC	LENGTHENED THE SHAFT OF THE PIN 0.150"	11/19/98	J. McDONALD
2	SC	REDUCED OVERALL LENGTH BY 0.188"	2/4/00	D. BEACH
3	SC	ADDED 1/8" R	6/17/04	J. McDONALD

QTY	DWG/PART NUMBER	DESCRIPTION	MATERIAL
440 C SS		ILLIAC LOAD CELL PLUNGER	
1		QUANTITY FOR AN ASSEMBLY	
2		QUANTITY FOR ENTIRE DUMMY	
MATERIAL:		440 C SS	
FINISH:		-	
Hole Dia. $\pm .002$			
Fractions $\pm 1/64$			
Angles $\pm .5^\circ$			
Tolerances			
DIMENSIONS ARE IN INCHES			
UNLESS OTHERWISE SPECIFIED			
ENGINEERED:	D. BEACH	DATE:	6/1/98
DRAWN:	D. BEACH	DATE:	6/1/98
CHECKED:	STAFF	DATE:	6/1/98
SCALE:	1=1	REVISION:	3
	A		
DRAWING TITLE:		ILLIAC LOAD CELL PLUNGER	
DRAWING NUMBER:		TIPIJM018	
DEPARTMENT OF TRANSPORTATION		NHTSA	
CONTRACT NO.: DTMB 28-94-C-07010		DESIGNED BY: GESAC, INC.	
125 ORCHARD DRIVE		ROCKVILLE, MD 20850	

4

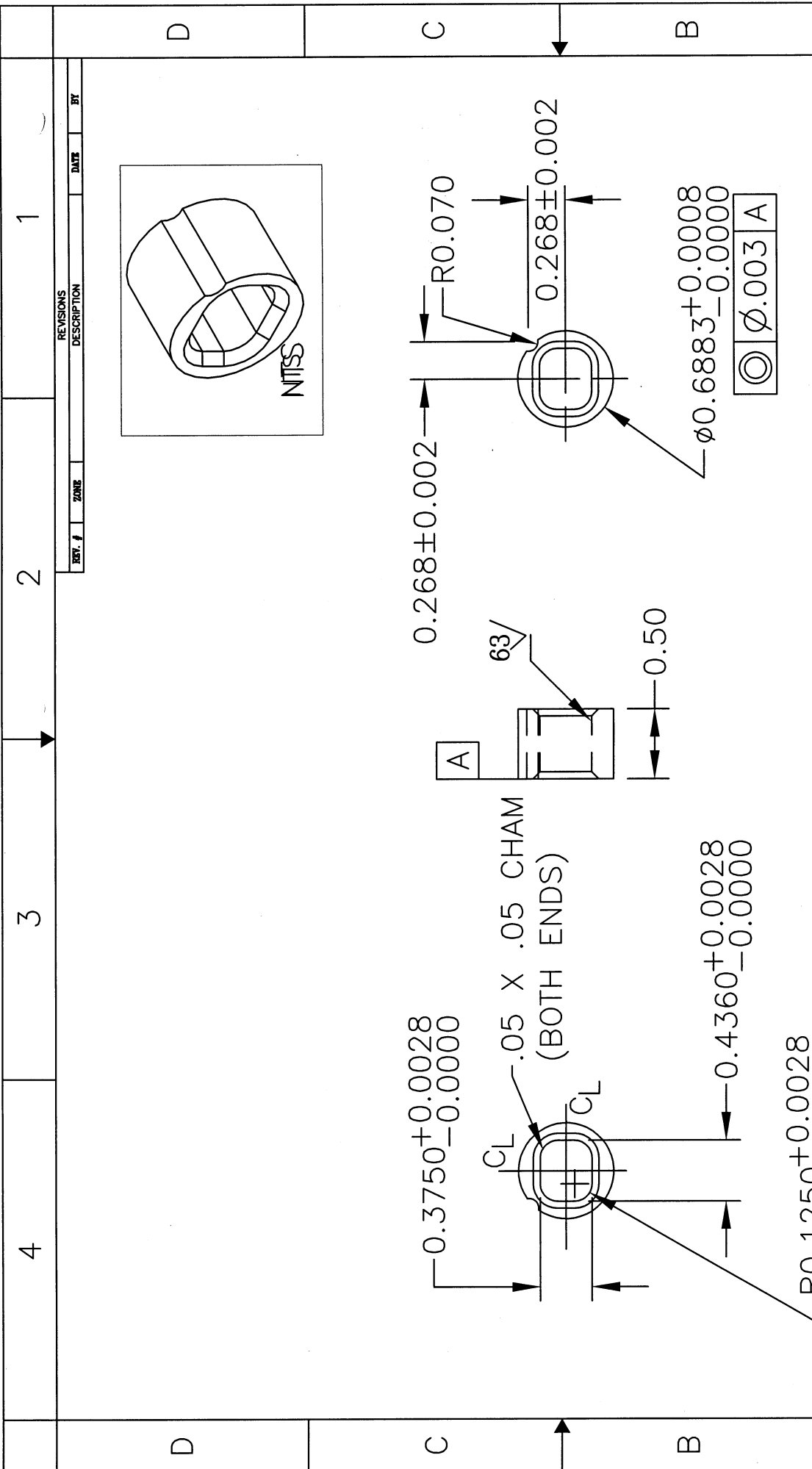
3

2

1

Page

1/1



REV. #	ZONE	DATE	BY
1			

QTY	DWG/PART NUMBER	DESCRIPTION	MATERIAL
2		ADDITIONAL HARDWARE NEEDED FOR ASSEMBLY	

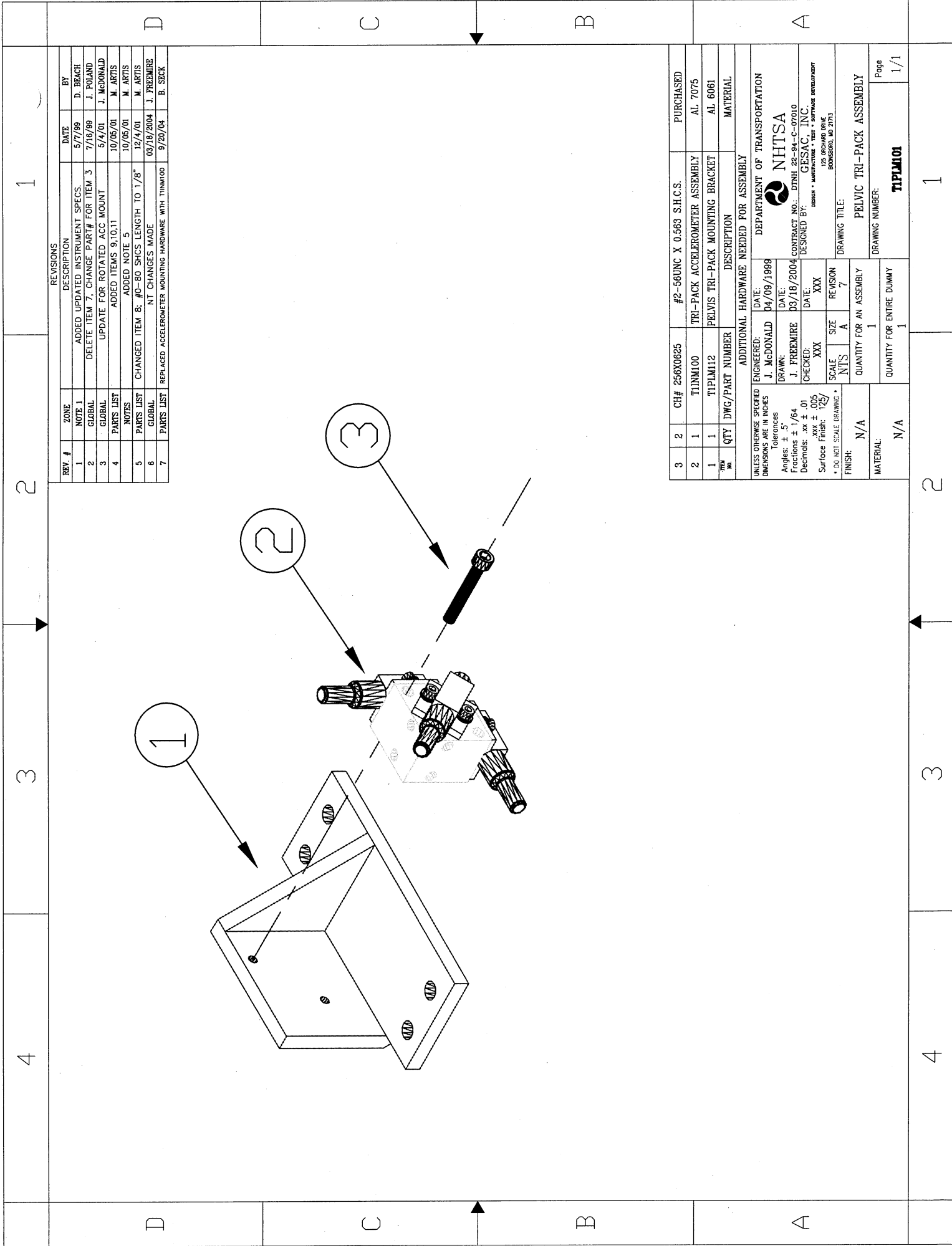
  

ENGINEERED:	DATE:	DEPARTMENT OF TRANSPORTATION
M. ARTIS	9/9/03	NHTSA
DRAWN:	DATE:	CONTRACT NO.: DTRH 22-94-C-07010
M. ARTIS	9/9/03	DESIGNED BY: GESAC, INC.
CHECKED:	DATE:	123 ORCROFT DRIVE
M. ARTIS	1/19/04	ROCKFORD, IL 61153
SCALE:	SIZE:	REVISION:
1=1	A	NC
FINISH: * DO NOT SCALE DRAWING *		
QUANTITY FOR AN ASSEMBLY: 2		
QUANTITY FOR ENTIRE DUMMY: 2		
MATERIAL: 936 BRONZE		
DRAWING TITLE: PELVIS H-PT. TOOL BEARING		
DRAWING NUMBER: T1PLM019		
Page: 1/1		









REV. #	ZONE	DESCRIPTION	DATE	BY
1	NOTE 1	ADDED UPDATED INSTRUMENT SPECS.	5/7/99	D. BEACH
2	GLOBAL	DELETE ITEM 7, CHANGE PART# FOR ITEM 3	7/16/99	J. POLAND
3	GLOBAL	UPDATE FOR ROTATED ACC. MOUNT	5/4/01	J. McDONALD
4	PARTS LIST	ADDED ITEMS 9,10,11	10/05/01	M. ARTIS
5	PARTS LIST	ADDED NOTE 5	10/05/01	M. ARTIS
6	PARTS LIST	CHANGED ITEM B, #0-80 SHCS LENGTH TO 1/8"	12/4/01	M. ARTIS
7	GLOBAL	NT CHANGES MADE	03/19/2004	J. FREEMIRE
	PARTS LIST	REPLACED ACCELEROMETER MOUNTING HARDWARE WITH TINNM100	9/20/04	B. SECK

3	2	CH# 256X0625	#2-56UNC X 0.563 S.H.C.S.	PURCHASED
2	1	TINNM100	TRI-PACK ACCELEROMETER ASSEMBLY	AL 7075
1	1	TIPLM112	PELVIS TRI-PACK MOUNTING BRACKET	AL 6061
	QTY	DWG/PART NUMBER	DESCRIPTION	MATERIAL
ADDITIONAL HARDWARE NEEDED FOR ASSEMBLY				
UNLESS OTHERWISE SPECIFIED: DATE: 04/09/1999				
DIMENSIONS ARE IN INCHES ENGINEERED: J. McDONALD				
Tolerances				
Angles: ± .5°				
Fractions: ± 1/64				
Decimals: .xx ± .01				
Surface Finish: .xxx ± .005				
SCALE: SIZE REVISION				
NTS A 7				
FINISH: N/A				
QUANTITY FOR AN ASSEMBLY: 1				
QUANTITY FOR ENTIRE DUMMY: 1				
MATERIAL: N/A				
DRAWING TITLE: PELVIC TRI-PACK ASSEMBLY				
DRAWING NUMBER: TIPLM101				
Page 1/1				

REVISIONS

ADDITIONAL HARDWARE NEEDED FOR ASSEMBLY

UNLESS OTHERWISE SPECIFIED:  
DIMENSIONS ARE IN INCHES

Tolerances  
Angles: ± .5°  
Fractions: ± 1/64  
Decimals: .xx ± .01  
Surface Finish: .xxx ± .005

SCALE: SIZE REVISION  
NTS A 7

FINISH: N/A

QUANTITY FOR AN ASSEMBLY: 1

QUANTITY FOR ENTIRE DUMMY: 1

MATERIAL: N/A

DRAWING TITLE: PELVIC TRI-PACK ASSEMBLY

DRAWING NUMBER: TIPLM101

Page 1/1

DATE: 04/09/1999

ENGINEERED: J. McDONALD

Tolerances

Angles: ± .5°

Fractions: ± 1/64

Decimals: .xx ± .01

Surface Finish: .xxx ± .005

SCALE: SIZE REVISION

NTS A 7

FINISH: N/A

QUANTITY FOR AN ASSEMBLY: 1

QUANTITY FOR ENTIRE DUMMY: 1

MATERIAL: N/A

DRAWING TITLE: PELVIC TRI-PACK ASSEMBLY

DRAWING NUMBER: TIPLM101

Page 1/1

DATE: 04/09/1999

ENGINEERED: J. McDONALD

Tolerances

Angles: ± .5°

Fractions: ± 1/64

Decimals: .xx ± .01

Surface Finish: .xxx ± .005

SCALE: SIZE REVISION

NTS A 7

FINISH: N/A

QUANTITY FOR AN ASSEMBLY: 1

QUANTITY FOR ENTIRE DUMMY: 1

MATERIAL: N/A

DRAWING TITLE: PELVIC TRI-PACK ASSEMBLY

DRAWING NUMBER: TIPLM101

Page 1/1

DATE: 04/09/1999

ENGINEERED: J. McDONALD

Tolerances

Angles: ± .5°

Fractions: ± 1/64

Decimals: .xx ± .01

Surface Finish: .xxx ± .005

SCALE: SIZE REVISION

NTS A 7

FINISH: N/A

QUANTITY FOR AN ASSEMBLY: 1

QUANTITY FOR ENTIRE DUMMY: 1

MATERIAL: N/A

DRAWING TITLE: PELVIC TRI-PACK ASSEMBLY

DRAWING NUMBER: TIPLM101

Page 1/1

DATE: 04/09/1999

ENGINEERED: J. McDONALD

Tolerances

Angles: ± .5°

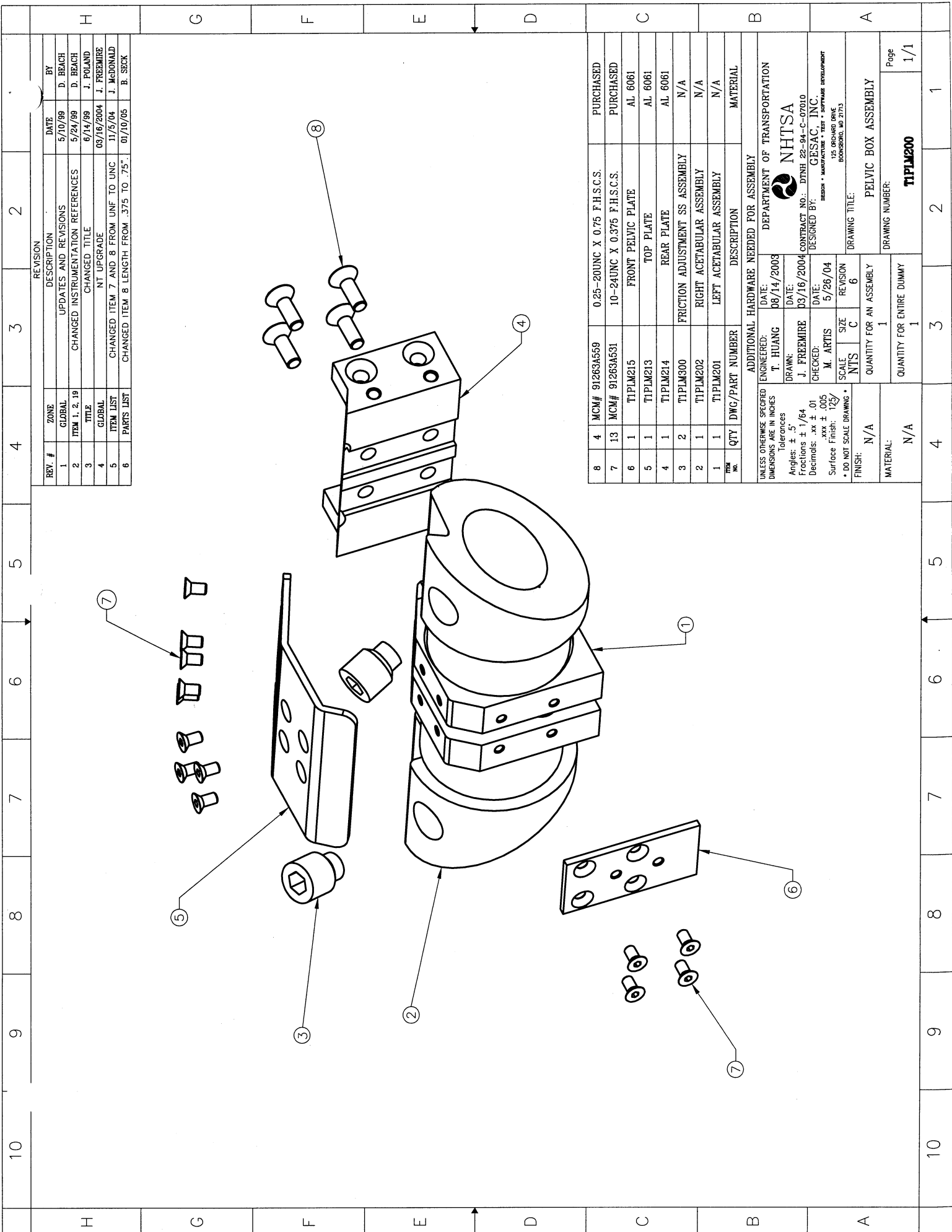
Fractions: ± 1/64

Decimals: .xx ± .01

Surface Finish: .xxx ± .005



8	7	6	5	4	3	2	1																																			
<p style="text-align: center;"><b>2X #2-56 HELICOIL INSERT</b></p>																																										
<p style="text-align: center;"><b>REVISIONS</b></p> <table border="1"> <thead> <tr> <th>REV #</th> <th>ZONE</th> <th>DESCRIPTION</th> <th>DATE</th> <th>BY</th> </tr> </thead> <tbody> <tr> <td>1</td> <td>GENERAL</td> <td>ADDED HELICOIL INSERT TO HARDWARE LIST</td> <td>8/10/96</td> <td>D. BEACH</td> </tr> <tr> <td>2</td> <td>GENERAL</td> <td>MODIFIED DIMENSION LABELS</td> <td>9/14/96</td> <td>J. PELARD</td> </tr> <tr> <td>3</td> <td>TITLE BLOCK</td> <td>ADDED FINISH</td> <td>7/29/96</td> <td>J. PELARD</td> </tr> <tr> <td>4</td> <td>C-2</td> <td>CHANGED HOLE AND C'SINK NOTATION</td> <td>9/25/96</td> <td>D. BEACH</td> </tr> <tr> <td>5</td> <td>GENERAL</td> <td>MODIFIED GEOMETRY</td> <td>11/13/00</td> <td>J. DRUMMOND</td> </tr> <tr> <td>6</td> <td>GENERAL</td> <td>INCREASED THE PART WIDTH AND INCREASED THE CORNER AND R-90 VALUES</td> <td>4/29/01</td> <td>J. MCDONALD</td> </tr> </tbody> </table>								REV #	ZONE	DESCRIPTION	DATE	BY	1	GENERAL	ADDED HELICOIL INSERT TO HARDWARE LIST	8/10/96	D. BEACH	2	GENERAL	MODIFIED DIMENSION LABELS	9/14/96	J. PELARD	3	TITLE BLOCK	ADDED FINISH	7/29/96	J. PELARD	4	C-2	CHANGED HOLE AND C'SINK NOTATION	9/25/96	D. BEACH	5	GENERAL	MODIFIED GEOMETRY	11/13/00	J. DRUMMOND	6	GENERAL	INCREASED THE PART WIDTH AND INCREASED THE CORNER AND R-90 VALUES	4/29/01	J. MCDONALD
REV #	ZONE	DESCRIPTION	DATE	BY																																						
1	GENERAL	ADDED HELICOIL INSERT TO HARDWARE LIST	8/10/96	D. BEACH																																						
2	GENERAL	MODIFIED DIMENSION LABELS	9/14/96	J. PELARD																																						
3	TITLE BLOCK	ADDED FINISH	7/29/96	J. PELARD																																						
4	C-2	CHANGED HOLE AND C'SINK NOTATION	9/25/96	D. BEACH																																						
5	GENERAL	MODIFIED GEOMETRY	11/13/00	J. DRUMMOND																																						
6	GENERAL	INCREASED THE PART WIDTH AND INCREASED THE CORNER AND R-90 VALUES	4/29/01	J. MCDONALD																																						
<p style="text-align: center;"><b>ADDITIONAL HARDWARE NEEDED FOR ASSEMBLY</b></p> <table border="1"> <thead> <tr> <th>QTY</th> <th>DRG/PART NUMBER</th> <th>DESCRIPTION</th> <th>PURCHASED</th> </tr> </thead> <tbody> <tr> <td>1</td> <td>2</td> <td>MCM# 91732A203 #2-56 x 0.086 HELI-COIL INSERT</td> <td>MATERIAL</td> </tr> </tbody> </table>								QTY	DRG/PART NUMBER	DESCRIPTION	PURCHASED	1	2	MCM# 91732A203 #2-56 x 0.086 HELI-COIL INSERT	MATERIAL																											
QTY	DRG/PART NUMBER	DESCRIPTION	PURCHASED																																							
1	2	MCM# 91732A203 #2-56 x 0.086 HELI-COIL INSERT	MATERIAL																																							
<p style="text-align: center;"><b>UNLESS OTHERWISE SPECIFIED DIMENSIONS ARE IN INCHES</b></p> <p style="text-align: center;"><b>Tolerances</b></p> <p>Angles: ± .5°</p> <p>Fractions: ± 1/64</p> <p>Decimals: .xxx ± .01</p> <p>Hole Dia: ± .005</p> <p>± DO NOT SCALE DRAWING</p> <p>SCALE: 1" = 1" B 6</p> <p style="text-align: center;"><b>CLEAR ANODIZED</b></p> <p style="text-align: center;"><b>QUANTITY FOR AN ASSEMBLY</b></p> <p style="text-align: center;">1</p> <p style="text-align: center;"><b>QUANTITY FOR ENTIRE DUMMY</b></p> <p style="text-align: center;">1</p> <p style="text-align: center;"><b>MATERIAL:</b></p> <p style="text-align: center;">6061-T6</p>																																										
<p style="text-align: center;"><b>NOTES:</b></p> <p style="text-align: center;">1 REMOVE ALL BURRS AND BREAK SHARP EDGES.</p>																																										
8	7	6	5	4	3	2	1																																			



REV. #	ZONE	DESCRIPTION	DATE	BY
1	GLOBAL	UPDATES AND REVISIONS	5/10/99	D. BRACH
2	ITEM 1, 2, 19	CHANGED INSTRUMENTATION REFERENCES	5/24/99	D. BRACH
3	TITLE	CHANGED TITLE	6/14/99	J. POLAND
4	GLOBAL	NT UPGRADE	03/16/2004	J. FREEMIRE
5	GLOBAL	CHANGED ITEM 7 AND 8 FROM UNF TO UNC	11/5/04	J. McDONALD
6	PARTS LIST	CHANGED ITEM 8 LENGTH FROM .375 TO .75"	01/10/05	B. SECK

QTY	DWG/PART NUMBER	DESCRIPTION	MATERIAL
8	MC# 91263A559	0.25--20UNC X 0.75 F.H.S.C.S.	PURCHASED
7	MC# 91263A531	10-24UNC X 0.375 F.H.S.C.S.	PURCHASED
6	1	FRONT PELVIC PLATE	AL. 6061
5	1	TOP PLATE	AL. 6061
4	1	REAR PLATE	AL. 6061
3	2	FRICION ADJUSTMENT SS ASSEMBLY	N/A
2	1	RIGHT ACETABULAR ASSEMBLY	N/A
1	1	LEFT ACETABULAR ASSEMBLY	N/A
1	1	PELVIC BOX ASSEMBLY	MATERIAL

UNLESS OTHERWISE SPECIFIED  
DIMENSIONS ARE IN INCHES

ENGINEER: T. HUANG DATE: 08/14/2003  
 DRAWN: J. FREEMIRE DATE: 03/16/2004  
 CHECKED: M. ARTIS DATE: 5/26/04

Tolerances  
 Angles: ± .5°  
 Fractions: ± 1/64  
 Decimals: .xx ± .01  
 Surface Finish: 125/  
 \* DO NOT SCALE DRAWING \*

SCALE: NTS C 6  
 REVISION: 6

FINISH: N/A

QUANTITY FOR AN ASSEMBLY: 1  
 QUANTITY FOR ENTIRE DUMMY: 1

MATERIAL: N/A

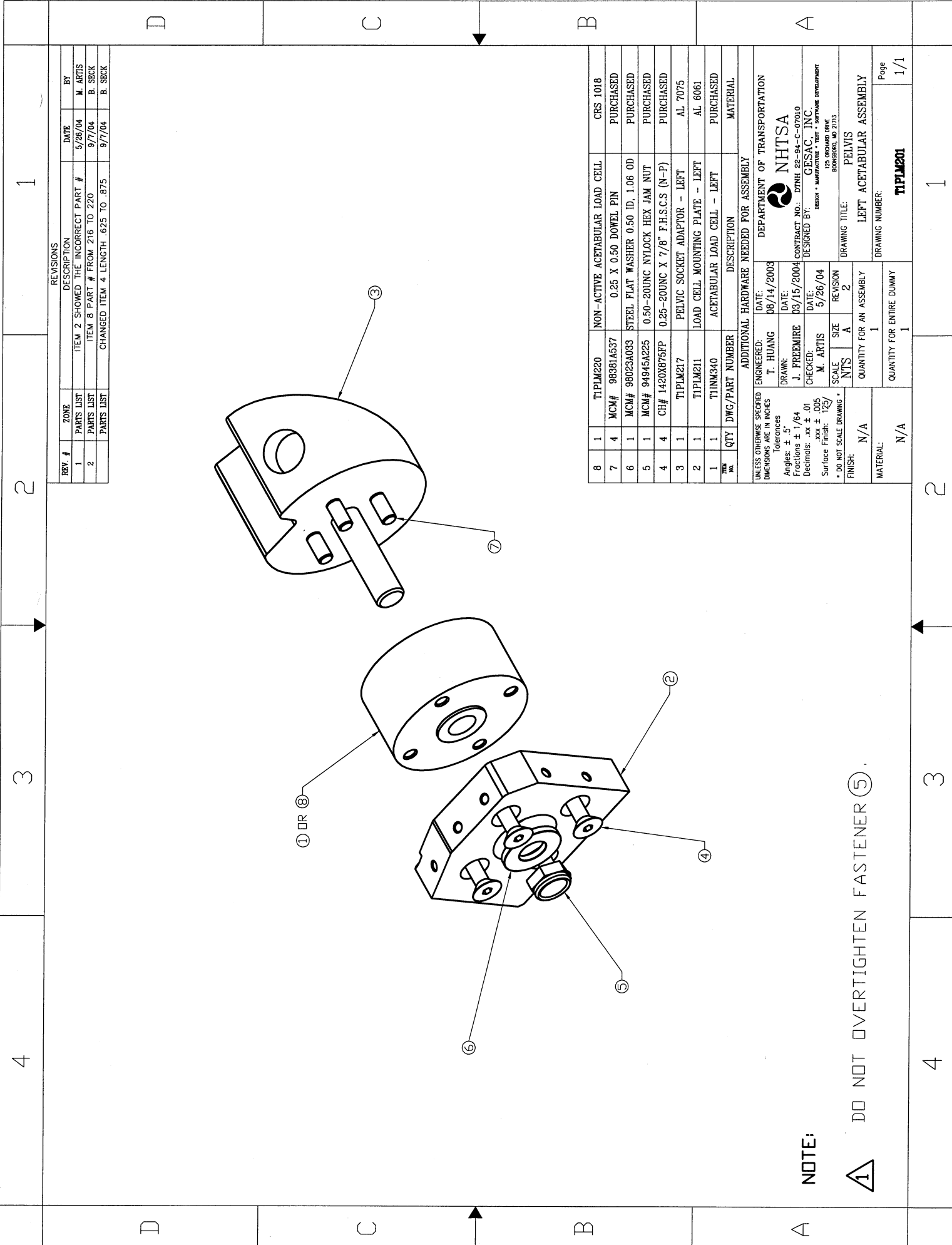
ADDITIONAL HARDWARE NEEDED FOR ASSEMBLY

ENGINEER: T. HUANG DATE: 08/14/2003  
 DEPARTMENT OF TRANSPORTATION  
 NHTSA  
 CONTRACT NO.: DTNH 22-94-C-07010  
 DESIGNED BY: GESAC, INC.  
 DESIGN • MANUFACTURE • TEST • SOFTWARE DEVELOPMENT  
 125 RICHARD DRIVE  
 BOWERSBORO, MD 21713

DRAWING TITLE: PELVIC BOX ASSEMBLY

DRAWING NUMBER: TIPLM200

Page: 1/1



REV. #	ZONE	DESCRIPTION	DATE	BY
1	PARTS LIST	ITEM 2 SHOWED THE INCORRECT PART #	5/26/04	M. ARTIS
2	PARTS LIST	ITEM 8 PART # FROM 216 TO 220	9/7/04	B. SECK
	PARTS LIST	CHANGED ITEM 4 LENGTH .625 TO .875	9/7/04	B. SECK

ITEM NO.	QTY	DWG/PART NUMBER	DESCRIPTION	MATERIAL
8	1	TIPLM220	NON-ACTIVE ACETABULAR LOAD CELL	CRS 1018
7	4	MCM# 98381A537	0.25 X 0.50 DOWEL PIN	PURCHASED
6	1	MCM# 98023A033	STEEL FLAT WASHER 0.50 ID, 1.06 OD	PURCHASED
5	1	MCM# 94945A225	0.50-20UNC NYLOCK HEX JAM NUT	PURCHASED
4	4	CH# 1420XB75FP	0.25-20UNC X 7/8" F.H.S.C.S (N-P)	PURCHASED
3	1	TIPLM217	PELVIC SOCKET ADAPTOR - LEFT	AL 7075
2	1	TIPLM211	LOAD CELL MOUNTING PLATE - LEFT	AL 6061
1	1	TIINN640	ACETABULAR LOAD CELL - LEFT	PURCHASED

ADDITIONAL HARDWARE NEEDED FOR ASSEMBLY

UNLESS OTHERWISE SPECIFIED DIMENSIONS ARE IN INCHES

ENGINEERED: T. HUANG DATE: 08/14/2003  
 DRAWN: J. FREEMIRE DATE: 03/15/2004  
 CHECKED: M. ARTIS DATE: 5/26/04

Scale: NTS A 2  
 QUANTITY FOR AN ASSEMBLY: 1  
 QUANTITY FOR ENTIRE DUMMY: 1

FINISH: N/A

MATERIAL: N/A

DEPARTMENT OF TRANSPORTATION  
 NHTSA  
 CONTRACT NO.: DTRH 22-94-C-07010  
 DESIGNED BY: GESAC, INC.  
 DESIGN • MANUFACTURING • TEST • SOFTWARE DEVELOPMENT  
 125 ORCHARD DRIVE  
 BOWERSVILLE, MD 21713

DRAWING TITLE: PELVIS  
 LEFT ACETABULAR ASSEMBLY

DRAWING NUMBER: TIPLM201

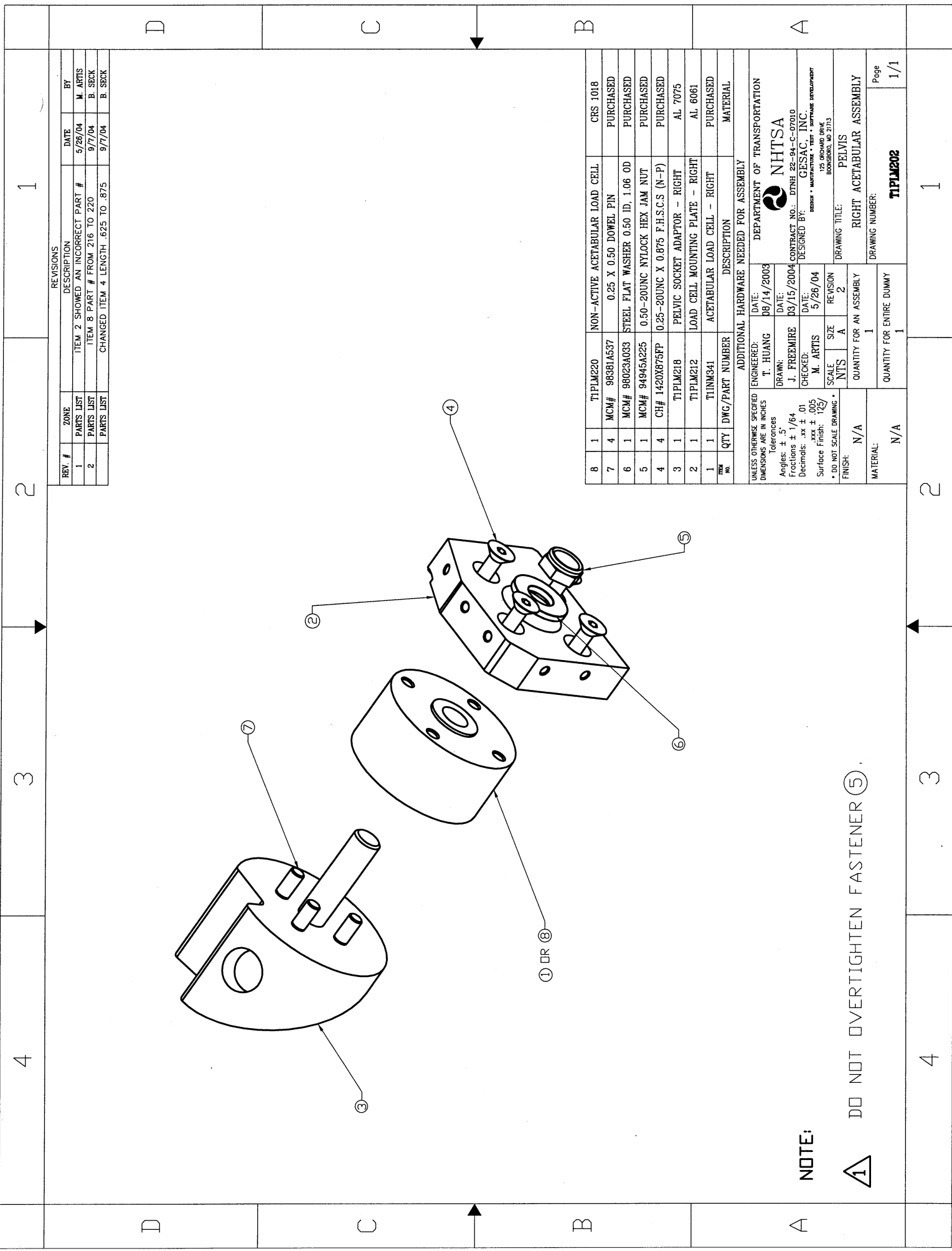
Page 1/1

**NOTE:**

**1** DO NOT OVERTIGHTEN FASTENER **5**.

1 2 3 4

D C B A



REVISIONS		ZONE	DESCRIPTION	DATE	BY
1	PARTS LIST		ITEM 2 SHOWED AN INCORRECT PART #	5/26/04	M. ARTIS
2	PARTS LIST		ITEM 8 PART # FROM 216 TO 220	9/7/04	B. SECK
	PARTS LIST		CHANGED ITEM 4 LENGTH .625 TO .875	9/7/04	B. SECK

ITEM #	QTY	DWG/PART NUMBER	DESCRIPTION	MATERIAL
8	1	TIPLM220	NON-ACTIVE ACETABULAR LOAD CELL	CRS 1018
7	4	MCM# 98881A537	0.25 X 0.50 DOWEL PIN	PURCHASED
6	1	MCM# 98023A033	STEEL FLAT WASHER 0.50 ID, 1.06 OD	PURCHASED
5	1	MCM# 94945A225	0.50-20UNC NYLOCK HEX JAM NUT	PURCHASED
4	4	CH# 1420X876FP	0.25-20UNC X 0.875 F.H.S.C.S (N-P)	PURCHASED
3	1	TIPLM218	PELVIC SOCKET ADAPTOR - RIGHT	AL 7075
2	1	TIPLM212	LOAD CELL MOUNTING PLATE - RIGHT	AL 6061
1	1	TIINM341	ACETABULAR LOAD CELL - RIGHT	PURCHASED

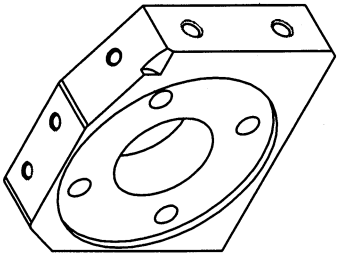
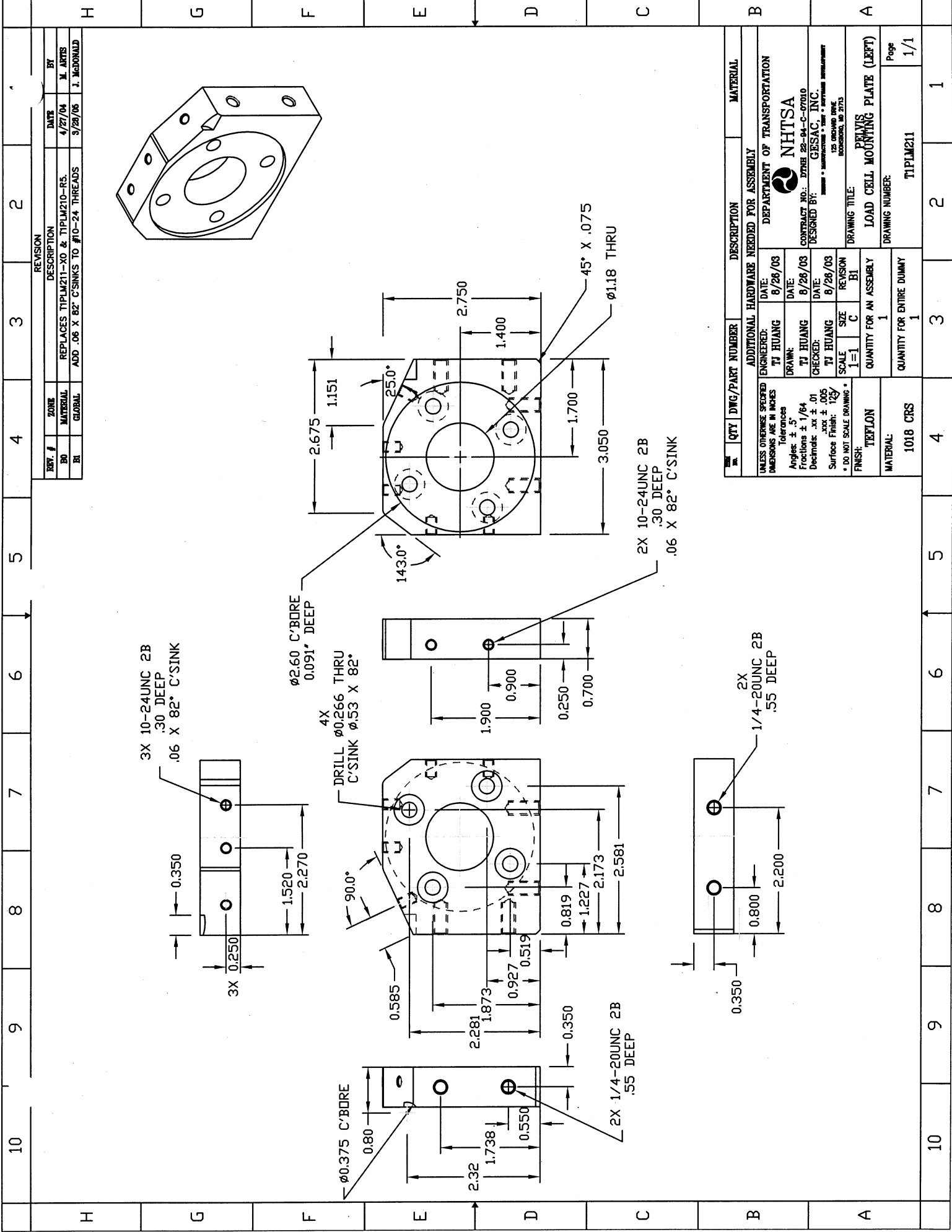
UNLESS OTHERWISE SPECIFIED DIMENSIONS ARE IN INCHES		Tolerances	
Angles:	± .5°	DATE:	08/14/2003
Fractions:	± 1/64	ENGINEERED:	T. HUANG
Decimals:	.xx ± .01	DRAWN:	J. FREEMIRE
Surface Finish:	.xxx ± .005	CHECKED:	M. ARTIS
	1/25/	DATE:	03/15/2004
		DESIGNED BY:	GESAC, INC.
			DESIGN • MANUFACTURE • TEST • SOFTWARE DEVELOPMENT
			175 BROADWAY DRIVE BOWLING GREEN, MD 21713

ADDITIONAL HARDWARE NEEDED FOR ASSEMBLY	
DEPARTMENT OF TRANSPORTATION	NHTSA
CONTRACT NO.: DTNH 22-94-C-07010	CONTRACT NO.: DTNH 22-94-C-07010
DESIGNED BY: GESAC, INC.	DESIGNED BY: GESAC, INC.
DRAWING TITLE: PELVIS	DRAWING TITLE: PELVIS
RIGHT ACETABULAR ASSEMBLY	RIGHT ACETABULAR ASSEMBLY
DRAWING NUMBER: TIPLM202	DRAWING NUMBER: TIPLM202
QUANTITY FOR AN ASSEMBLY: 1	QUANTITY FOR AN ASSEMBLY: 1
QUANTITY FOR ENTIRE DUMMY: 1	QUANTITY FOR ENTIRE DUMMY: 1
MATERIAL: N/A	MATERIAL: N/A

**NOTE:**

**1** DO NOT OVERTIGHTEN FASTENER **5**.

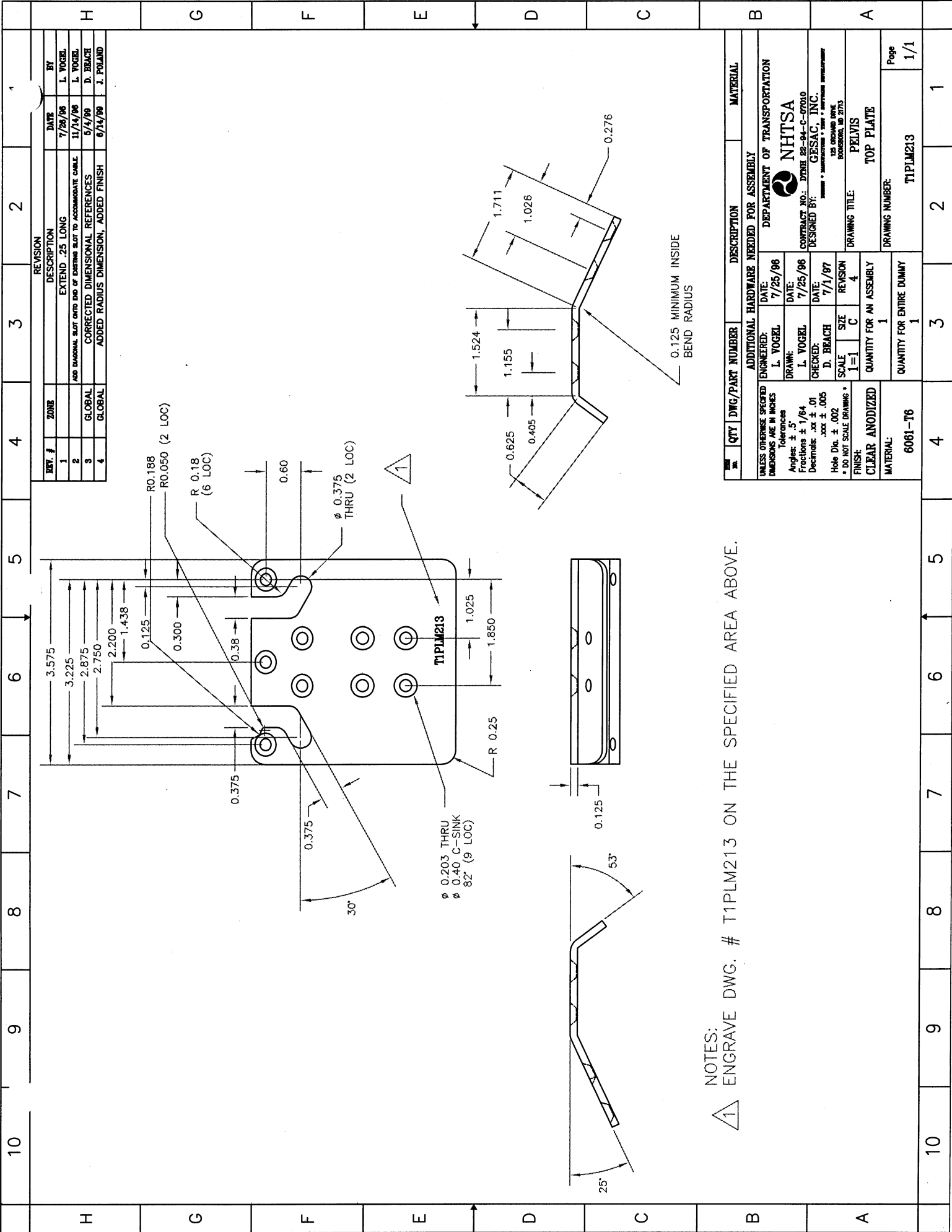




REVISION		DATE	BY
REV. #	DESCRIPTION		
B0	REPLACES TIPLM211-X0 & TIPLM210-RS.	4/27/04	M. ARTS
B1	ADD .06 X 82° C'SINKS TO #10-24 THREADS	9/28/06	J. McDONALD

QTY	DWG/PART NUMBER	DESCRIPTION	MATERIAL
1		ADDITIONAL HARDWARE NEEDED FOR ASSEMBLY	
UNLESS OTHERWISE SPECIFIED DIMENSIONS ARE IN INCHES			
Tolerances			
Angles: $\pm .5^\circ$			
Fractions: $\pm 1/64$			
Decimals: .xx $\pm .01$			
Surface Finish: 125			
* DO NOT SCALE DRAWING *			
FINISH: TEFLON			
QUANTITY FOR AN ASSEMBLY: 1			
QUANTITY FOR ENTIRE DUMMY: 1			
MATERIAL: 1018 CRS			
DRAWING TITLE: LOAD CELL MOUNTING PLATE (LEFT)			
DRAWING NUMBER: TIPLM211			
DESIGNED BY: GESAC, INC.			
CONTRACT NO.: DTRB 22-94-C-07010			
NHTSA DEPARTMENT OF TRANSPORTATION			
DATE: 8/26/03			
ENGINEERED: TJ HUANG			
DATE: 8/26/03			
DRAWN: TJ HUANG			
DATE: 8/26/03			
CHECKED: TJ HUANG			
DATE: 8/26/03			
SCALE: 1=1			
SIZE: C			
REVISION: B1			
DRAWING TITLE: LOAD CELL MOUNTING PLATE (LEFT)			
DESIGNED BY: GESAC, INC.			
CONTRACT NO.: DTRB 22-94-C-07010			
NHTSA DEPARTMENT OF TRANSPORTATION			
DATE: 8/26/03			
ENGINEERED: TJ HUANG			
DATE: 8/26/03			
DRAWN: TJ HUANG			
DATE: 8/26/03			
CHECKED: TJ HUANG			
DATE: 8/26/03			
SCALE: 1=1			
SIZE: C			
REVISION: B1			
DRAWING TITLE: LOAD CELL MOUNTING PLATE (LEFT)			
DESIGNED BY: GESAC, INC.			
CONTRACT NO.: DTRB 22-94-C-07010			
NHTSA DEPARTMENT OF TRANSPORTATION			
DATE: 8/26/03			
ENGINEERED: TJ HUANG			
DATE: 8/26/03			
DRAWN: TJ HUANG			
DATE: 8/26/03			
CHECKED: TJ HUANG			
DATE: 8/26/03			
SCALE: 1=1			
SIZE: C			
REVISION: B1			
DRAWING TITLE: LOAD CELL MOUNTING PLATE (LEFT)			
DESIGNED BY: GESAC, INC.			
CONTRACT NO.: DTRB 22-94-C-07010			
NHTSA DEPARTMENT OF TRANSPORTATION			
DATE: 8/26/03			
ENGINEERED: TJ HUANG			
DATE: 8/26/03			
DRAWN: TJ HUANG			
DATE: 8/26/03			
CHECKED: TJ HUANG			
DATE: 8/26/03			
SCALE: 1=1			
SIZE: C			
REVISION: B1			
DRAWING TITLE: LOAD CELL MOUNTING PLATE (LEFT)			
DESIGNED BY: GESAC, INC.			
CONTRACT NO.: DTRB 22-94-C-07010			
NHTSA DEPARTMENT OF TRANSPORTATION			
DATE: 8/26/03			
ENGINEERED: TJ HUANG			
DATE: 8/26/03			
DRAWN: TJ HUANG			
DATE: 8/26/03			
CHECKED: TJ HUANG			
DATE: 8/26/03			
SCALE: 1=1			
SIZE: C			
REVISION: B1			
DRAWING TITLE: LOAD CELL MOUNTING PLATE (LEFT)			
DESIGNED BY: GESAC, INC.			
CONTRACT NO.: DTRB 22-94-C-07010			
NHTSA DEPARTMENT OF TRANSPORTATION			
DATE: 8/26/03			
ENGINEERED: TJ HUANG			
DATE: 8/26/03			
DRAWN: TJ HUANG			
DATE: 8/26/03			
CHECKED: TJ HUANG			
DATE: 8/26/03			
SCALE: 1=1			
SIZE: C			
REVISION: B1			
DRAWING TITLE: LOAD CELL MOUNTING PLATE (LEFT)			
DESIGNED BY: GESAC, INC.			
CONTRACT NO.: DTRB 22-94-C-07010			
NHTSA DEPARTMENT OF TRANSPORTATION			
DATE: 8/26/03			
ENGINEERED: TJ HUANG			
DATE: 8/26/03			
DRAWN: TJ HUANG			
DATE: 8/26/03			
CHECKED: TJ HUANG			
DATE: 8/26/03			
SCALE: 1=1			
SIZE: C			
REVISION: B1			
DRAWING TITLE: LOAD CELL MOUNTING PLATE (LEFT)			
DESIGNED BY: GESAC, INC.			
CONTRACT NO.: DTRB 22-94-C-07010			
NHTSA DEPARTMENT OF TRANSPORTATION			
DATE: 8/26/03			
ENGINEERED: TJ HUANG			
DATE: 8/26/03			
DRAWN: TJ HUANG			
DATE: 8/26/03			
CHECKED: TJ HUANG			
DATE: 8/26/03			
SCALE: 1=1			
SIZE: C			
REVISION: B1			
DRAWING TITLE: LOAD CELL MOUNTING PLATE (LEFT)			
DESIGNED BY: GESAC, INC.			
CONTRACT NO.: DTRB 22-94-C-07010			
NHTSA DEPARTMENT OF TRANSPORTATION			
DATE: 8/26/03			
ENGINEERED: TJ HUANG			
DATE: 8/26/03			
DRAWN: TJ HUANG			
DATE: 8/26/03			
CHECKED: TJ HUANG			
DATE: 8/26/03			
SCALE: 1=1			
SIZE: C			
REVISION: B1			
DRAWING TITLE: LOAD CELL MOUNTING PLATE (LEFT)			
DESIGNED BY: GESAC, INC.			
CONTRACT NO.: DTRB 22-94-C-07010			
NHTSA DEPARTMENT OF TRANSPORTATION			
DATE: 8/26/03			
ENGINEERED: TJ HUANG			
DATE: 8/26/03			
DRAWN: TJ HUANG			
DATE: 8/26/03			
CHECKED: TJ HUANG			
DATE: 8/26/03			
SCALE: 1=1			
SIZE: C			
REVISION: B1			
DRAWING TITLE: LOAD CELL MOUNTING PLATE (LEFT)			
DESIGNED BY: GESAC, INC.			
CONTRACT NO.: DTRB 22-94-C-07010			
NHTSA DEPARTMENT OF TRANSPORTATION			
DATE: 8/26/03			
ENGINEERED: TJ HUANG			
DATE: 8/26/03			
DRAWN: TJ HUANG			
DATE: 8/26/03			
CHECKED: TJ HUANG			
DATE: 8/26/03			
SCALE: 1=1			
SIZE: C			
REVISION: B1			
DRAWING TITLE: LOAD CELL MOUNTING PLATE (LEFT)			
DESIGNED BY: GESAC, INC.			
CONTRACT NO.: DTRB 22-94-C-07010			
NHTSA DEPARTMENT OF TRANSPORTATION			
DATE: 8/26/03			
ENGINEERED: TJ HUANG			
DATE: 8/26/03			
DRAWN: TJ HUANG			
DATE: 8/26/03			
CHECKED: TJ HUANG			
DATE: 8/26/03			
SCALE: 1=1			
SIZE: C			
REVISION: B1			
DRAWING TITLE: LOAD CELL MOUNTING PLATE (LEFT)			
DESIGNED BY: GESAC, INC.			
CONTRACT NO.: DTRB 22-94-C-07010			
NHTSA DEPARTMENT OF TRANSPORTATION			
DATE: 8/26/03			
ENGINEERED: TJ HUANG			
DATE: 8/26/03			
DRAWN: TJ HUANG			
DATE: 8/26/03			
CHECKED: TJ HUANG			
DATE: 8/26/03			
SCALE: 1=1			
SIZE: C			
REVISION: B1			
DRAWING TITLE: LOAD CELL MOUNTING PLATE (LEFT)			
DESIGNED BY: GESAC, INC.			
CONTRACT NO.: DTRB 22-94-C-07010			
NHTSA DEPARTMENT OF TRANSPORTATION			
DATE: 8/26/03			
ENGINEERED: TJ HUANG			
DATE: 8/26/03			
DRAWN: TJ HUANG			
DATE: 8/26/03			
CHECKED: TJ HUANG			
DATE: 8/26/03			
SCALE: 1=1			
SIZE: C			
REVISION: B1			
DRAWING TITLE: LOAD CELL MOUNTING PLATE (LEFT)			
DESIGNED BY: GESAC, INC.			
CONTRACT NO.: DTRB 22-94-C-07010			
NHTSA DEPARTMENT OF TRANSPORTATION			
DATE: 8/26/03			
ENGINEERED: TJ HUANG			
DATE: 8/26/03			
DRAWN: TJ HUANG			
DATE: 8/26/03			
CHECKED: TJ HUANG			
DATE: 8/26/03			
SCALE: 1=1			
SIZE: C			
REVISION: B1			
DRAWING TITLE: LOAD CELL MOUNTING PLATE (LEFT)			
DESIGNED BY: GESAC, INC.			
CONTRACT NO.: DTRB 22-94-C-07010			
NHTSA DEPARTMENT OF TRANSPORTATION			
DATE: 8/26/03			
ENGINEERED: TJ HUANG			
DATE: 8/26/03			
DRAWN: TJ HUANG			
DATE: 8/26/03			
CHECKED: TJ HUANG			
DATE: 8/26/03			
SCALE: 1=1			
SIZE: C			
REVISION: B1			
DRAWING TITLE: LOAD CELL MOUNTING PLATE (LEFT)			
DESIGNED BY: GESAC, INC.			
CONTRACT NO.: DTRB 22-94-C-07010			
NHTSA DEPARTMENT OF TRANSPORTATION			
DATE: 8/26/03			
ENGINEERED: TJ HUANG			
DATE: 8/26/03			
DRAWN: TJ HUANG			
DATE: 8/26/03			
CHECKED: TJ HUANG			
DATE: 8/26/03			
SCALE: 1=1			
SIZE: C			
REVISION: B1			
DRAWING TITLE: LOAD CELL MOUNTING PLATE (LEFT)			
DESIGNED BY: GESAC, INC.			
CONTRACT NO.: DTRB 22-94-C-07010			
NHTSA DEPARTMENT OF TRANSPORTATION			
DATE: 8/26/03			
ENGINEERED: TJ HUANG			
DATE: 8/26/03			
DRAWN: TJ HUANG			
DATE: 8/26/03			
CHECKED: TJ HUANG			
DATE: 8/26/03			
SCALE: 1=1			
SIZE: C			
REVISION: B1			
DRAWING TITLE: LOAD CELL MOUNTING PLATE (LEFT)			
DESIGNED BY: GESAC, INC.			
CONTRACT NO.: DTRB 22-94-C-07010			
NHTSA DEPARTMENT OF TRANSPORTATION			
DATE: 8/26/03			
ENGINEERED: TJ HUANG			
DATE: 8/26/03			
DRAWN: TJ HUANG			
DATE: 8/26/03			
CHECKED: TJ HUANG			
DATE: 8/26/03			
SCALE: 1=1			
SIZE: C			
REVISION: B1			
DRAWING TITLE: LOAD CELL MOUNTING PLATE (LEFT)			
DESIGNED BY: GESAC, INC.			
CONTRACT NO.: DTRB 22-94-C-07010			
NHTSA DEPARTMENT OF TRANSPORTATION			
DATE: 8/26/03			
ENGINEERED: TJ HUANG			
DATE: 8/26/03			
DRAWN: TJ HUANG			
DATE: 8/26/03			
CHECKED: TJ HUANG			
DATE: 8/26/03			
SCALE: 1=1			
SIZE: C			
REVISION: B1			
DRAWING TITLE: LOAD CELL MOUNTING PLATE (LEFT)			
DESIGNED BY: GESAC, INC.			
CONTRACT NO.: DTRB 22-94-C-07010			
NHTSA DEPARTMENT OF TRANSPORTATION			
DATE: 8/26/03			
ENGINEERED: TJ HUANG			
DATE: 8/26/03			
DRAWN: TJ HUANG			
DATE: 8/26/03			
CHECKED: TJ HUANG			
DATE: 8/26/03			
SCALE: 1=1			
SIZE: C			
REVISION: B1			
DRAWING TITLE: LOAD CELL MOUNTING PLATE (LEFT)			
DESIGNED BY: GESAC, INC.			
CONTRACT NO.: DTRB 22-94-C-07010			
NHTSA DEPARTMENT OF TRANSPORTATION			
DATE: 8/26/03			
ENGINEERED: TJ HUANG			
DATE: 8/26/03			
DRAWN: TJ HUANG			
DATE: 8/26/03			
CHECKED: TJ HUANG			
DATE: 8/26/03			
SCALE: 1=1			
SIZE: C			
REVISION: B1			
DRAWING TITLE: LOAD CELL MOUNTING PLATE (LEFT)			
DESIGNED BY: GESAC, INC.			
CONTRACT NO.: DTRB 22-94-C-07010			
NHTSA DEPARTMENT OF TRANSPORTATION			
DATE: 8/26/03			
ENGINEERED: TJ HUANG			
DATE: 8/26/03			
DRAWN: TJ HUANG			
DATE: 8/26/03			
CHECKED: TJ HUANG			
DATE: 8/26/03			
SCALE: 1=1			
SIZE: C			
REVISION: B1			
DRAWING TITLE: LOAD CELL MOUNTING PLATE (LEFT)			
DESIGNED BY: GESAC, INC.			
CONTRACT NO.: DTRB 22-94-C-07010			
NHTSA DEPARTMENT OF TRANSPORTATION			
DATE: 8/26/03			
ENGINEERED: TJ HUANG			
DATE: 8/26/03			
DRAWN: TJ HUANG			
DATE: 8/26/03			
CHECKED: TJ HUANG			
DATE: 8/26/03			
SCALE: 1=1			
SIZE: C			
REVISION: B1			
DRAWING TITLE: LOAD CELL MOUNTING PLATE (LEFT)			
DESIGNED BY: GESAC, INC.			
CONTRACT NO.: DTRB 22-94-C-07010			
NHTSA DEPARTMENT OF TRANSPORTATION			
DATE: 8/26/03			
ENGINEERED: TJ HUANG			
DATE: 8/26/03			
DRAWN: TJ HUANG			
DATE: 8/26/03			
CHECKED: TJ HUANG			
DATE: 8/26/03			
SCALE: 1=1			
SIZE: C			
REVISION: B1			
DRAWING TITLE: LOAD CELL MOUNTING PLATE (LEFT)			
DESIGNED BY: GESAC, INC.			
CONTRACT NO.: DTRB 22-94-C-07010			
NHTSA DEPARTMENT OF TRANSPORTATION			
DATE: 8/26/03			
ENGINEERED: TJ HUANG			
DATE: 8/26/03			
DRAWN: TJ HUANG			
DATE: 8/26/03			
CHECKED: TJ HUANG			
DATE: 8/26/03			
SCALE: 1=1			
SIZE: C			
REVISION: B1			
DRAWING TITLE: LOAD CELL MOUNTING PLATE (LEFT)			
DESIGNED BY: GESAC, INC.			
CONTRACT NO.: DTRB 22-94-C-07010			
NHTSA DEPARTMENT OF TRANSPORTATION			
DATE: 8/26/03			
ENGINEERED: TJ HUANG			
DATE: 8/26/03			
DRAWN: TJ HUANG			
DATE: 8/26/03			
CHECKED: TJ HUANG			
DATE: 8/26/03			
SCALE: 1=1			
SIZE: C			
REVISION: B1			
DRAWING TITLE: LOAD CELL MOUNTING PLATE (LEFT)			
DESIGNED BY: GESAC, INC.			
CONTRACT NO.: DTRB 22-94-C-07010			
NHTSA DEPARTMENT OF TRANSPORTATION			
DATE: 8/26/03			
ENGINEERED: TJ HUANG			
DATE: 8/26/03			
DRAWN: TJ HUANG			
DATE: 8/26/03			
CHECKED: TJ HUANG			
DATE: 8/26/03			
SCALE: 1=1			
SIZE: C			
REVISION: B1			
DRAWING TITLE: LOAD CELL MOUNTING PLATE (LEFT)			
DESIGNED BY: GESAC, INC.			
CONTRACT NO.: DTRB 22-94-C-07010			
NHTSA DEPARTMENT OF TRANSPORTATION			
DATE: 8/26/03			
ENGINEERED: TJ HUANG			
DATE: 8/26/03			
DRAWN: TJ HUANG			
DATE: 8/26/03			
CHECKED: TJ HUANG			
DATE: 8/26/03			
SCALE: 1=1			
SIZE: C			
REVISION: B1			
DRAWING TITLE: LOAD CELL MOUNTING PLATE (LEFT)			
DESIGNED BY: GESAC, INC.			
CONTRACT NO.: DTRB 22-94-C-07010			
NHTSA DEPARTMENT OF TRANSPORTATION			
DATE: 8/26/03			
ENGINEERED: TJ HUANG			
DATE: 8/26/03			
DRAWN: TJ HUANG			
DATE: 8/26/03			
CHECKED: TJ HUANG			
DATE: 8/26/03			
SCALE: 1=1			
SIZE: C			
REVISION: B1			
DRAWING TITLE: LOAD CELL MOUNTING PLATE (LEFT)			
DESIGNED			





NOTES:  
 1 ENGRAVE DWG. # T1PLM213 ON THE SPECIFIED AREA ABOVE.

REV. #	ZONE	DESCRIPTION	DATE	BY
1		EXTEND 25 LONG	7/28/96	L. VOGEL
2		ADD DIAGONAL SLOT OVER END OF EXISTING SLOT TO ACCOMMODATE CABLE.	11/14/96	L. VOGEL
3	GLOBAL	CORRECTED DIMENSIONAL REFERENCES	5/4/99	D. BRANCH
4	GLOBAL	ADDED RADIUS DIMENSION, ADDED FINISH	6/14/99	J. POLAND

QTY	DWG/PART NUMBER	DESCRIPTION	MATERIAL
1	6061-T6	PELVIS TOP PLATE	TI1PLM213
1	1	QUANTITY FOR AN ASSEMBLY	
1	1	QUANTITY FOR ENTIRE DUMMY	

UNLESS OTHERWISE SPECIFIED DIMENSIONS ARE IN INCHES	ENGINEERED:	DATE:
Tolerances	L. VOGEL	7/25/96
Angles: ± .5°	DRAWN:	
Fractions: ± 1/64	L. VOGEL	7/25/96
Decimals: .xx ± .01	CHECKED:	
.xxx ± .005	D. BRANCH	7/1/97
Hole Dia. ± .002	SCALE	SIZE
* DO NOT SCALE DRAWING *	1=1	C
FINISH:	REVISION	
CLEAR ANODIZED	1	4
MATERIAL:	QUANTITY FOR AN ASSEMBLY	
6061-T6	1	
	QUANTITY FOR ENTIRE DUMMY	
	1	

ADDITIONAL HARDWARE NEEDED FOR ASSEMBLY	DEPARTMENT OF TRANSPORTATION
	NHTSA
	CONTRACT NO.: DTMB 22-94-C-07010
	DESIGNED BY: GESAC, INC.
	125 ORLAND DRIVE
	BOSSBORO, MD 21713
	DRAWING TITLE: PELVIS
	DRAWING NUMBER: TI1PLM213
	Page 1/1



8	7	6	5	4	3	2	1																																				
D	C	B					A																																				
<div style="text-align: center;"> </div>																																											
<p>REVISIONS</p> <table border="1"> <tr> <th>REV. #</th> <th>ZONE</th> <th>DESCRIPTION</th> <th>DATE</th> <th>BY</th> </tr> <tr> <td>1</td> <td>GLOBAL</td> <td>ADDED FINISH, CHANGED PLS TO LOC.</td> <td>9/14/96</td> <td>J. FORD</td> </tr> </table>								REV. #	ZONE	DESCRIPTION	DATE	BY	1	GLOBAL	ADDED FINISH, CHANGED PLS TO LOC.	9/14/96	J. FORD																										
REV. #	ZONE	DESCRIPTION	DATE	BY																																							
1	GLOBAL	ADDED FINISH, CHANGED PLS TO LOC.	9/14/96	J. FORD																																							
<p>UNLESS OTHERWISE SPECIFIED DIMENSIONS ARE IN INCHES</p> <p>Angles: ± .5°  Fractions: ± 1/64  Decimals: .xx ± .005  Hole Dia: ± .002  * DO NOT SCALE DIMENSIONS *</p> <p>FINISH: CLEAR ANODIZED</p> <p>MATERIAL: 6061-T6</p>																																											
<p>NOTES:</p> <p>① ENGRAVE DWG. # T1PLM215 ON THE AREA SPECIFIED ABOVE.</p> <p>② GRIND EXCESS HELI-COIL FLUSH WITH SURFACE OF PLATE.</p>																																											
<table border="1"> <tr> <th>NO.</th> <th>QTY</th> <th>MCM #</th> <th>DWG/PART NUMBER</th> <th>DESCRIPTION</th> <th>PURCHASE MATERIAL</th> </tr> <tr> <td>1</td> <td>2</td> <td>917324211</td> <td>10-32 HELI-COIL X .125"</td> <td></td> <td></td> </tr> </table>								NO.	QTY	MCM #	DWG/PART NUMBER	DESCRIPTION	PURCHASE MATERIAL	1	2	917324211	10-32 HELI-COIL X .125"																										
NO.	QTY	MCM #	DWG/PART NUMBER	DESCRIPTION	PURCHASE MATERIAL																																						
1	2	917324211	10-32 HELI-COIL X .125"																																								
<table border="1"> <tr> <th>ENGINEERED</th> <th>DATE</th> <th>DEPARTMENT OF TRANSPORTATION</th> </tr> <tr> <td>L. VOGEL</td> <td>2/28/96</td> <td>NHTSA</td> </tr> <tr> <th>DRAWN</th> <th>DATE</th> <th>CONTRACT NO.: DTMB 28-94-C-0010</th> </tr> <tr> <td>L. VOGEL</td> <td>2/28/96</td> <td>DESIGNED BY: GESAC, INC.</td> </tr> <tr> <th>CHECKED</th> <th>DATE</th> <th>125 ORIGINATOR NAME</th> </tr> <tr> <td>D. BRACH</td> <td>6/30/97</td> <td>125 ORIGINATOR NO. 2773</td> </tr> <tr> <th>SCALE</th> <th>SIZE</th> <th>DRAWING TITLE:</th> </tr> <tr> <td>1=1</td> <td>B</td> <td>PELVIS</td> </tr> <tr> <th>REVISION</th> <th>QUANTITY FOR AN ASSEMBLY</th> <th>FRONT PLATE</th> </tr> <tr> <td>1</td> <td>1</td> <td></td> </tr> <tr> <th>QUANTITY FOR ENTIRE DUMMY</th> <th>DRAWING NUMBER:</th> <th>Page</th> </tr> <tr> <td>1</td> <td>T1PLM215</td> <td>1/1</td> </tr> </table>								ENGINEERED	DATE	DEPARTMENT OF TRANSPORTATION	L. VOGEL	2/28/96	NHTSA	DRAWN	DATE	CONTRACT NO.: DTMB 28-94-C-0010	L. VOGEL	2/28/96	DESIGNED BY: GESAC, INC.	CHECKED	DATE	125 ORIGINATOR NAME	D. BRACH	6/30/97	125 ORIGINATOR NO. 2773	SCALE	SIZE	DRAWING TITLE:	1=1	B	PELVIS	REVISION	QUANTITY FOR AN ASSEMBLY	FRONT PLATE	1	1		QUANTITY FOR ENTIRE DUMMY	DRAWING NUMBER:	Page	1	T1PLM215	1/1
ENGINEERED	DATE	DEPARTMENT OF TRANSPORTATION																																									
L. VOGEL	2/28/96	NHTSA																																									
DRAWN	DATE	CONTRACT NO.: DTMB 28-94-C-0010																																									
L. VOGEL	2/28/96	DESIGNED BY: GESAC, INC.																																									
CHECKED	DATE	125 ORIGINATOR NAME																																									
D. BRACH	6/30/97	125 ORIGINATOR NO. 2773																																									
SCALE	SIZE	DRAWING TITLE:																																									
1=1	B	PELVIS																																									
REVISION	QUANTITY FOR AN ASSEMBLY	FRONT PLATE																																									
1	1																																										
QUANTITY FOR ENTIRE DUMMY	DRAWING NUMBER:	Page																																									
1	T1PLM215	1/1																																									
8	7	6	5	4	3	2	1																																				
D	C	B					A																																				



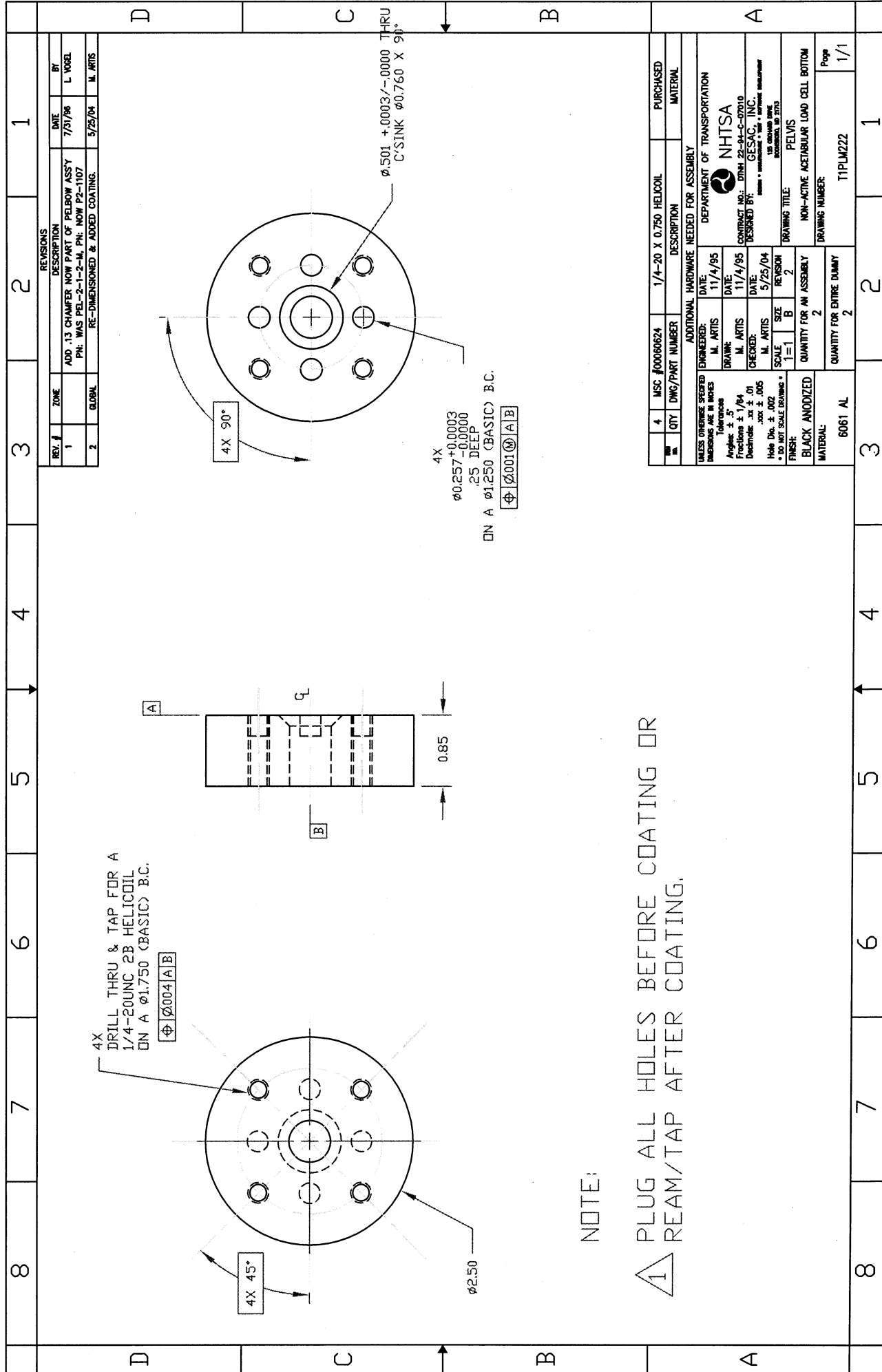


10	9	8	7	6	5	4	3	2	1																									
<table border="1"> <thead> <tr> <th>REV. #</th> <th>ZONE</th> <th>DESCRIPTION</th> <th>DATE</th> <th>BY</th> </tr> </thead> <tbody> <tr> <td>1</td> <td>A-1</td> <td>CHANGED PART NAME, MATERIAL SPECS, ADDED NOTE FOR CASTING COMPANY</td> <td>8/4/97</td> <td>D. BEACH</td> </tr> <tr> <td>2</td> <td>GLOBAL</td> <td>CHANGED MATERIAL SPECS</td> <td>5/27/98</td> <td>D. BEACH</td> </tr> <tr> <td>3</td> <td>NOTES</td> <td>ADDED NOTE 4; GESAC SUPPLIED PART</td> <td>5/10/01</td> <td>MARTIS</td> </tr> <tr> <td>4</td> <td>NOTES</td> <td>CHANGED NOTE 4.</td> <td>5/25/04</td> <td>MARTIS</td> </tr> </tbody> </table>										REV. #	ZONE	DESCRIPTION	DATE	BY	1	A-1	CHANGED PART NAME, MATERIAL SPECS, ADDED NOTE FOR CASTING COMPANY	8/4/97	D. BEACH	2	GLOBAL	CHANGED MATERIAL SPECS	5/27/98	D. BEACH	3	NOTES	ADDED NOTE 4; GESAC SUPPLIED PART	5/10/01	MARTIS	4	NOTES	CHANGED NOTE 4.	5/25/04	MARTIS
REV. #	ZONE	DESCRIPTION	DATE	BY																														
1	A-1	CHANGED PART NAME, MATERIAL SPECS, ADDED NOTE FOR CASTING COMPANY	8/4/97	D. BEACH																														
2	GLOBAL	CHANGED MATERIAL SPECS	5/27/98	D. BEACH																														
3	NOTES	ADDED NOTE 4; GESAC SUPPLIED PART	5/10/01	MARTIS																														
4	NOTES	CHANGED NOTE 4.	5/25/04	MARTIS																														
<p>DRILL AND C'SINK FOR #10 FLATHEAD (2 LOC)</p>																																		
<p>NOTES:</p> <p>1 FRONT PELVIC CASTING IS A CONTOURED CAST PART WHICH REPRESENTS THE CURVATURE AT THE FRONT OF THE PELVIS.</p> <p>2 ENGRAVE DWG. # T1PLM219 ON THE SPECIFIED AREA ABOVE.</p> <p>3 THE FRONT PELVIC CASTING IS A URETHANE CASTING DESIGNED BY GESAC INC, THE CASTING MATERIAL IS CIBI-GIEGY RP6430 URETHANE (75 +/- 3 D)</p> <p>4 PART USED FOR COPYING IS AVAILABLE FROM NHTSA.</p>																																		
<table border="1"> <thead> <tr> <th>QTY</th> <th>DWG/PART NUMBER</th> <th>DESCRIPTION</th> <th>MATERIAL</th> </tr> </thead> <tbody> <tr> <td>1</td> <td>T1PLM219</td> <td>FRONT PELVIC CASTING</td> <td>URETHANE</td> </tr> <tr> <td>1</td> <td>T1PLM219</td> <td>MACHINED FRONT PELVIC CASTING</td> <td>URETHANE</td> </tr> </tbody> </table>										QTY	DWG/PART NUMBER	DESCRIPTION	MATERIAL	1	T1PLM219	FRONT PELVIC CASTING	URETHANE	1	T1PLM219	MACHINED FRONT PELVIC CASTING	URETHANE													
QTY	DWG/PART NUMBER	DESCRIPTION	MATERIAL																															
1	T1PLM219	FRONT PELVIC CASTING	URETHANE																															
1	T1PLM219	MACHINED FRONT PELVIC CASTING	URETHANE																															









REVISIONS		DATE	BY
1	ADD .13 CHAMFER NOW PART OF ELBOW ASSY P/N: WAS PEL-2-1-2-M, P/N: NOW P2-1107	7/31/96	L. NOBEL
2	RE-DIMENSIONED & ADDED COATING.	5/25/04	M. ARTIS

4X  
DRILL THRU & TAP FOR A  
1/4-20UNC 2B HELICOIL  
DN A  $\phi 1.750$  (BASIC) B.C.  
 $\phi \text{ } \textcircled{0004} \text{ } \textcircled{A} \text{ } \textcircled{B}$

4X  
 $\phi 0.257^{+0.0003}$   
 $0.25$  DEEP  
DN A  $\phi 1.250$  (BASIC) B.C.  
 $\phi \text{ } \textcircled{0001} \text{ } \textcircled{A} \text{ } \textcircled{B}$

$\phi .501^{+0.0003} / -0.0000$  THRU  
C-SINK  $\phi 0.760 \times 90^\circ$

NOTE:  
1 PLUG ALL HOLES BEFORE COATING OR  
REAM/TAP AFTER COATING.

QTY	MSC. #	DESC	UNIT	DATE	BY
4	00060624	1/4-20 X 0.750 HELICOIL			

UNLESS OTHERWISE SPECIFIED		ADDITIONAL HARDWARE NEEDED FOR ASSEMBLY	
ENGINEERED:	M. ARTIS	DATE:	11/4/95
DRAWN:	M. ARTIS	DATE:	11/4/95
CHECKED:	M. ARTIS	DATE:	5/25/04
SCALE:	1=1	REVISION:	2

DEPARTMENT OF TRANSPORTATION	
NHTSA	
CONTRACT NO.: DTH1 22-94-C-07010	
DESIGNED BY: GESAC, INC.	
125 GROUND BLDG.	
INDIANAPOLIS, IN 46219	

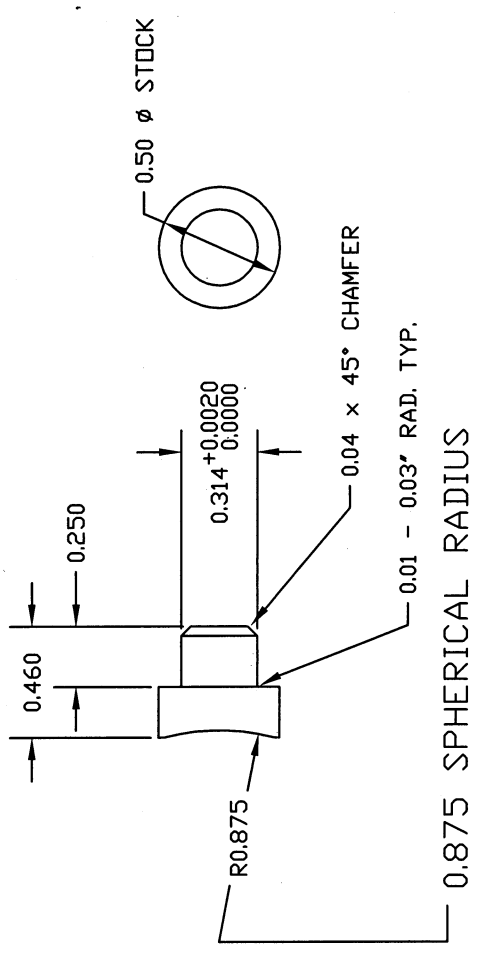
  

DRAWING TITLE:	
PELVIS	
DRAWING NUMBER:	
NON-ACTIVE ACETABULAR LOAD CELL BOTTOM	
QUANTITY FOR ENTIRE DUMMY:	
2	
QUANTITY FOR AN ASSEMBLY:	
2	
MATERIAL:	
6061 AL	

8	7	6	5	4	3	2	1																																																																																					
<table border="1"> <tr> <td colspan="2">REVISIONS</td> <td>DATE</td> <td>BY</td> </tr> <tr> <td>1</td> <td>ZONE</td> <td>9/14/96</td> <td>J. POLIAD</td> </tr> <tr> <td>1</td> <td>NOTES</td> <td colspan="2">EDIT NOTE 2</td> </tr> </table>								REVISIONS		DATE	BY	1	ZONE	9/14/96	J. POLIAD	1	NOTES	EDIT NOTE 2																																																																										
REVISIONS		DATE	BY																																																																																									
1	ZONE	9/14/96	J. POLIAD																																																																																									
1	NOTES	EDIT NOTE 2																																																																																										
D							A																																																																																					
C	<p>NOTES:</p> <p>1 REFERENCE GM HYIII 50% MALE DWG. NO. 78051-259</p> <p>2 REFERENCE AST# 78051-259 FRICTION PLUNGER ASSEMBLY</p> <p>3 PRESS FIT NYLON TIP T1PLM311 INTO SET SCREW T1PLM310</p>						B																																																																																					
<table border="1"> <tr> <td>2</td> <td>1</td> <td>T1PLM311</td> <td>PELVIS FRICTION ADJUSTMENT - NYLON TIP</td> <td>NYLON 6</td> </tr> <tr> <td>1</td> <td>1</td> <td>T1PLM310</td> <td>PELVIS FRICTION ADJUSTMENT SET SCREW</td> <td>ALLOY STEEL</td> </tr> <tr> <td>QTY</td> <td>DWG/PART NUMBER</td> <td>DESCRIPTION</td> <td>MATERIAL</td> <td></td> </tr> <tr> <td colspan="5">ADDITIONAL HARDWARE NEEDED FOR ASSEMBLY</td> </tr> <tr> <td>UNLESS OTHERWISE SPECIFIED</td> <td>ENGINEERED:</td> <td>DATE:</td> <td colspan="2">DEPARTMENT OF TRANSPORTATION</td> </tr> <tr> <td>DIMENSIONS ARE IN INCHES</td> <td>D. BRANCH</td> <td>5/28/97</td> <td colspan="2">NHTSA</td> </tr> <tr> <td>Tolerances</td> <td>DRAWING:</td> <td>DATE:</td> <td colspan="2">CONTRACT NO.: DTMB 95-DA-C-07010</td> </tr> <tr> <td>Angles ± .5°</td> <td>D. BRANCH</td> <td>6/28/97</td> <td colspan="2">DESIGNED BY: GESAC, INC.</td> </tr> <tr> <td>Fractions ± 1/64</td> <td>D. BRANCH</td> <td>DATE:</td> <td colspan="2">155 GARDNER AVE.</td> </tr> <tr> <td>Decimals .001</td> <td>D. BRANCH</td> <td>7/2/97</td> <td colspan="2">BOSTON, MA 02173</td> </tr> <tr> <td>± .005</td> <td>SCALE</td> <td>SIZE</td> <td colspan="2">DRAWING TITLE:</td> </tr> <tr> <td>± .002</td> <td>2=1</td> <td>B</td> <td colspan="2">PELVIS - FRICTION ADJUSTMENT SET SCREW - ASSEMBLY</td> </tr> <tr> <td>± .005</td> <td>REVISION</td> <td>1</td> <td colspan="2">DRAWING NUMBER:</td> </tr> <tr> <td>± .005</td> <td>QUANTITY FOR AN ASSEMBLY</td> <td>1</td> <td colspan="2">T1PLM300</td> </tr> <tr> <td>± .005</td> <td>QUANTITY FOR ENTIRE DUMMY</td> <td>2</td> <td colspan="2">Page</td> </tr> <tr> <td>± .005</td> <td>FINISH:</td> <td></td> <td colspan="2">1/1</td> </tr> <tr> <td>MATERIAL:</td> <td>SEE NOTES</td> <td></td> <td colspan="2"></td> </tr> </table>								2	1	T1PLM311	PELVIS FRICTION ADJUSTMENT - NYLON TIP	NYLON 6	1	1	T1PLM310	PELVIS FRICTION ADJUSTMENT SET SCREW	ALLOY STEEL	QTY	DWG/PART NUMBER	DESCRIPTION	MATERIAL		ADDITIONAL HARDWARE NEEDED FOR ASSEMBLY					UNLESS OTHERWISE SPECIFIED	ENGINEERED:	DATE:	DEPARTMENT OF TRANSPORTATION		DIMENSIONS ARE IN INCHES	D. BRANCH	5/28/97	NHTSA		Tolerances	DRAWING:	DATE:	CONTRACT NO.: DTMB 95-DA-C-07010		Angles ± .5°	D. BRANCH	6/28/97	DESIGNED BY: GESAC, INC.		Fractions ± 1/64	D. BRANCH	DATE:	155 GARDNER AVE.		Decimals .001	D. BRANCH	7/2/97	BOSTON, MA 02173		± .005	SCALE	SIZE	DRAWING TITLE:		± .002	2=1	B	PELVIS - FRICTION ADJUSTMENT SET SCREW - ASSEMBLY		± .005	REVISION	1	DRAWING NUMBER:		± .005	QUANTITY FOR AN ASSEMBLY	1	T1PLM300		± .005	QUANTITY FOR ENTIRE DUMMY	2	Page		± .005	FINISH:		1/1		MATERIAL:	SEE NOTES			
2	1	T1PLM311	PELVIS FRICTION ADJUSTMENT - NYLON TIP	NYLON 6																																																																																								
1	1	T1PLM310	PELVIS FRICTION ADJUSTMENT SET SCREW	ALLOY STEEL																																																																																								
QTY	DWG/PART NUMBER	DESCRIPTION	MATERIAL																																																																																									
ADDITIONAL HARDWARE NEEDED FOR ASSEMBLY																																																																																												
UNLESS OTHERWISE SPECIFIED	ENGINEERED:	DATE:	DEPARTMENT OF TRANSPORTATION																																																																																									
DIMENSIONS ARE IN INCHES	D. BRANCH	5/28/97	NHTSA																																																																																									
Tolerances	DRAWING:	DATE:	CONTRACT NO.: DTMB 95-DA-C-07010																																																																																									
Angles ± .5°	D. BRANCH	6/28/97	DESIGNED BY: GESAC, INC.																																																																																									
Fractions ± 1/64	D. BRANCH	DATE:	155 GARDNER AVE.																																																																																									
Decimals .001	D. BRANCH	7/2/97	BOSTON, MA 02173																																																																																									
± .005	SCALE	SIZE	DRAWING TITLE:																																																																																									
± .002	2=1	B	PELVIS - FRICTION ADJUSTMENT SET SCREW - ASSEMBLY																																																																																									
± .005	REVISION	1	DRAWING NUMBER:																																																																																									
± .005	QUANTITY FOR AN ASSEMBLY	1	T1PLM300																																																																																									
± .005	QUANTITY FOR ENTIRE DUMMY	2	Page																																																																																									
± .005	FINISH:		1/1																																																																																									
MATERIAL:	SEE NOTES																																																																																											
8	7	6	5	4	3	2	1																																																																																					

8	7	6	5	4	3	2	1																																																						
<table border="1"> <tr> <th>REV. #</th> <th>DATE</th> <th>BY</th> </tr> <tr> <td>1</td> <td>5/10/90</td> <td>D. BRACH</td> </tr> </table>								REV. #	DATE	BY	1	5/10/90	D. BRACH																																																
REV. #	DATE	BY																																																											
1	5/10/90	D. BRACH																																																											
<p>REVISIONS</p> <p>1 ELIMINATED THE REFERENCE TO PELLET SET SCREW</p>																																																													
<p>NOTES:</p> <p>1 NOTE: REFERENCE GM HYIII 50% MALE PART DWG. NO. 78051-260</p> <p>2 PART IS MANUFACTURED FROM A MODIFIED SOCKET HEAD SET SCREW - CUP POINT THE STOCK SET SCREW IS ALLOY STEEL WITH 3/4-10 THREAD x 3/4" LENGTH</p>																																																													
<table border="1"> <tr> <th>QTY</th> <th>DWG/PART NUMBER</th> <th>DESCRIPTION</th> <th>MATERIAL</th> </tr> <tr> <td>1</td> <td>CH # 3410076SS</td> <td>3/4-10 x 3/4" S.S.S.</td> <td>ALLOY STEEL</td> </tr> </table>								QTY	DWG/PART NUMBER	DESCRIPTION	MATERIAL	1	CH # 3410076SS	3/4-10 x 3/4" S.S.S.	ALLOY STEEL																																														
QTY	DWG/PART NUMBER	DESCRIPTION	MATERIAL																																																										
1	CH # 3410076SS	3/4-10 x 3/4" S.S.S.	ALLOY STEEL																																																										
<table border="1"> <tr> <th>ENGINEERED:</th> <th>DATE:</th> <th>DEPARTMENT OF ASSEMBLY</th> </tr> <tr> <td>D. BRACH</td> <td>5/28/97</td> <td>DEPARTMENT OF TRANSPORTATION</td> </tr> <tr> <th>DRAWN:</th> <th>DATE:</th> <th></th> </tr> <tr> <td>D. BRACH</td> <td>5/28/97</td> <td>NHTSA</td> </tr> <tr> <th>CHECKED:</th> <th>DATE:</th> <th>CONTRACT NO.:</th> </tr> <tr> <td>D. BRACH</td> <td>7/2/97</td> <td>DTMB 88-04-C-07010</td> </tr> <tr> <td></td> <td></td> <td>DESIGNED BY: GRSAC, INC.</td> </tr> <tr> <td></td> <td></td> <td>100 CHURCH AVE</td> </tr> <tr> <td></td> <td></td> <td>ROCKFORD, IL 61153</td> </tr> <tr> <th>SCALE:</th> <th>SIZE:</th> <th>REVISION:</th> </tr> <tr> <td>2=1</td> <td>B</td> <td>1</td> </tr> <tr> <th>FINISH:</th> <th>QUANTITY FOR AN ASSEMBLY:</th> <th>DRAWING TITLE:</th> </tr> <tr> <td></td> <td>1</td> <td>PELVIS</td> </tr> <tr> <td></td> <td>2</td> <th>FRUCTION ADJUSTMENT SET SCREW</th> </tr> <tr> <td></td> <td></td> <th>DRAWING NUMBER:</th> </tr> <tr> <td></td> <td></td> <td>TIP1M310</td> </tr> <tr> <td></td> <td></td> <th>Page:</th> </tr> <tr> <td></td> <td></td> <td>1/1</td> </tr> </table>								ENGINEERED:	DATE:	DEPARTMENT OF ASSEMBLY	D. BRACH	5/28/97	DEPARTMENT OF TRANSPORTATION	DRAWN:	DATE:		D. BRACH	5/28/97	NHTSA	CHECKED:	DATE:	CONTRACT NO.:	D. BRACH	7/2/97	DTMB 88-04-C-07010			DESIGNED BY: GRSAC, INC.			100 CHURCH AVE			ROCKFORD, IL 61153	SCALE:	SIZE:	REVISION:	2=1	B	1	FINISH:	QUANTITY FOR AN ASSEMBLY:	DRAWING TITLE:		1	PELVIS		2	FRUCTION ADJUSTMENT SET SCREW			DRAWING NUMBER:			TIP1M310			Page:			1/1
ENGINEERED:	DATE:	DEPARTMENT OF ASSEMBLY																																																											
D. BRACH	5/28/97	DEPARTMENT OF TRANSPORTATION																																																											
DRAWN:	DATE:																																																												
D. BRACH	5/28/97	NHTSA																																																											
CHECKED:	DATE:	CONTRACT NO.:																																																											
D. BRACH	7/2/97	DTMB 88-04-C-07010																																																											
		DESIGNED BY: GRSAC, INC.																																																											
		100 CHURCH AVE																																																											
		ROCKFORD, IL 61153																																																											
SCALE:	SIZE:	REVISION:																																																											
2=1	B	1																																																											
FINISH:	QUANTITY FOR AN ASSEMBLY:	DRAWING TITLE:																																																											
	1	PELVIS																																																											
	2	FRUCTION ADJUSTMENT SET SCREW																																																											
		DRAWING NUMBER:																																																											
		TIP1M310																																																											
		Page:																																																											
		1/1																																																											

8	7	6	5	4	3	2	1
REV. #		ZONE		REVISIONS		DATE BY	
				DESCRIPTION			

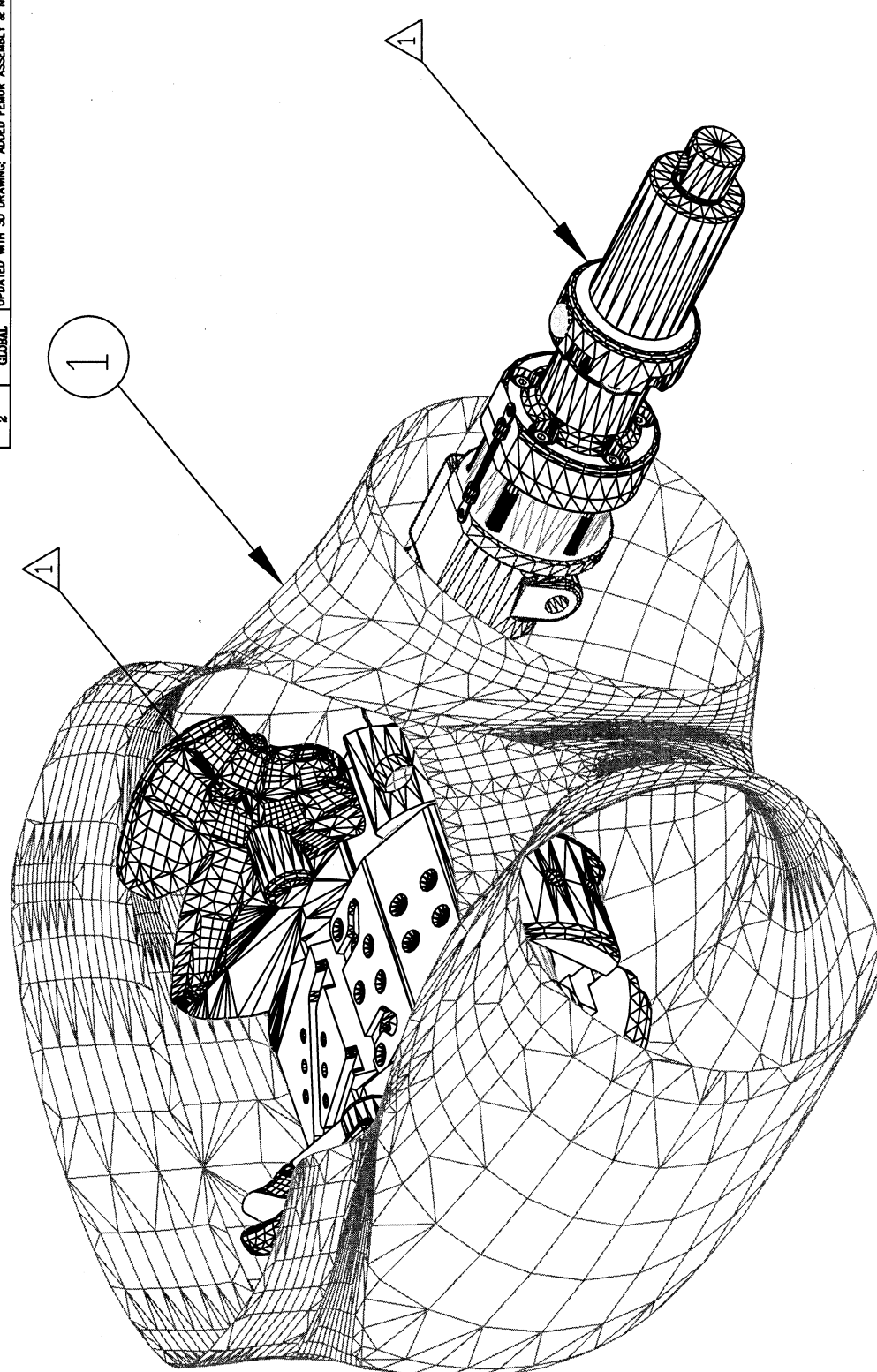


NOTE:  
 1 REFERENCE GM HYIII 50% MALE PART DWG. NO. 78051-261

QTY	DWG/PART NUMBER	DESCRIPTION	MATERIAL
		ADDITIONAL HARDWARE NEEDED FOR ASSEMBLY	
	ENGINEERED:	DATE: 5/28/97	
	D. BRANCH	DATE: 5/28/97	
	CHECKED:	DATE: 7/2/97	
	D. BRANCH	REVISION	
	SCALE	SIZE	
	2=1	B	
		N/C	
	QUANTITY FOR AN ASSEMBLY		
	1		
	QUANTITY FOR ENTIRE DUMMY		
	2		
	MATERIAL:		
	NYLON 6		
		DRAWING TITLE:	PELVIS
		DRAWING NUMBER:	TIPI1M611
			Page 1/1



10	9	8	7	6	5	4	3	2	1
H	G	F	E	D	C	B	A		



REV. #	ZONE	DESCRIPTION	DATE	BY
1	GLOBAL	ADDED INTEGRATED PELVIS/FEMUR SKIN	5/4/01	J. McDONALD
2	GLOBAL	UPDATED WITH 3D DRAWING; ADDED FEMUR ASSEMBLY & NOTE	02/14/05	SKIMMELKREMLIN

QTY	DWG/PART NUMBER	DESCRIPTION	MATERIAL
1	TIPLS010	MOLDED PELVIS SKIN	SILICONE RUBBER

ADDITIONAL HARDWARE NEEDED FOR ASSEMBLY	
ENGINEERED:	DATE: 5/5/96
J. FULLERTON	
DRAWN:	DATE: 7/21/87
M. ARTIS	
CHECKED:	DATE: 7/21/87
M. ARTIS	
SCALE:	SIZE: REVISION
NTS	C 2
QUANTITY FOR AN ASSEMBLY	
1	
QUANTITY FOR ENTIRE DUMMY	
1	

DEPARTMENT OF TRANSPORTATION	
NHTSA	
CONTRACT NO.: DTRC 22-84-C-07010	
DESIGNED BY: GESAC, INC.	
125 ORCHARD DRIVE	
ROCKFORD, MD 2715	
DRAWING TITLE: PELVIS	
MOLDED PELVIS SKIN ASSEMBLY	
DRAWING NUMBER:	TIPLS000
Page	1/1

NOTE:

1 PELVIS MECHANICAL ASSEMBLY AND FEMUR MECHANICAL ASSEMBLY ARE SHOWN FOR REFERENCE PURPOSES ONLY

