

NOTES:

- △ JACKET PATTERN SHOWN WITH INSIDE FACING UP.
- △ ALL INTERIOR SEWING SHOULD BE DONE DIRECTLY ONTO NEOPRENE ONLY WITH BROWN/WINE SIDE DOWNWARDS.
- △ SEW ABDOMEN PATCH IN PLACE ALIGNED WITH BOTTOM EDGE AND CENTERED.
- △ SEW ALL POCKETS AND STRAP ASSEMBLY IN PLACE ACCORDING TO SHOWN DIMENSIONS.
- △ HATCHED AREAS REPRESENT LOOP VELCRO THAT IS TO BE SEWN TO NEOPRENE AS WELL (ALL VELCRO IS 5/8")
- △ SEW THE LAMINATED SURFACE OF THE CORDURA POCKETS TO THE NEOPRENE, STARTING FROM THE TOP OF THE ASSEMBLY.
- △ THE NEOPRENE WILL REQUIRE STRETCHING IN ORDER TO MATE WITH THE EDGES OF THE CORDURA FROM THIS LEVEL AND BELOW.
- △ TRIM EDGES WITH BIAS TAPE.
- △ FOAM IS INSERTED SUCH THAT THE RADIUS EDGES FACE THE OUTER SHELL OF THE JACKET

QTY	DWG/PART NUMBER	DESCRIPTION	SEE DWG.
12	T1JKM134	SHOULDER POCKET (LEFT)	SEE DWG.
11	T1JKM135	SHOULDER POCKET (RIGHT)	SEE DWG.
10	T1JKM100	STEEL STIFFENERS	SPRING STEEL
9	T1JKM120	ABDOMEN PROTECTIVE PATCH	RED CORDURA FABRIC
8	T1JKM119	WEIGHTED RIB	MATTING
7	T1JKM118	UPPER SIDE FOAM	CHARCOAL FOAM
6	T1JKM115	UPPER LEFT FOAM POCKET	RED CORDURA FABRIC
5	T1JKM114	UPPER RIGHT FOAM POCKET	RED CORDURA FABRIC
4	T1JKM113	CHEST FOAM POCKET	RED CORDURA FABRIC
3	T1JKM112	STIFFENER POCKETS	RED CORDURA FABRIC
2	T1JKM111	OUTSIDE FRONT PANEL PATTERN	CORDURA
1	T1JKM110	INSIDE FRONT PANEL PATTERN	NEOPRENE
A	T1JKM130	CROTCH STRAP ASSEMBLY	SEE DWG
M		DESCRIPTION	MATERIAL

ADDITIONAL HARDWARE NEEDED FOR ASSEMBLY

UNLESS OTHERWISE SPECIFIED: ENGINEERED: DATE: 2/4/01
DIMENSIONS ARE IN INCHES M. ARTIS

DATE: 4/6/01
DRAWN: K. BEARR
CHECKED: M. ARTIS

DATE: 4/6/01
SCALE: SIZE 2=1 D B1
REVISION

10 NOT SCALE DIMENSIONS

FINISH:

QUANTITY FOR AN ASSEMBLY: 1

QUANTITY FOR ENTIRE DUMMY: 1

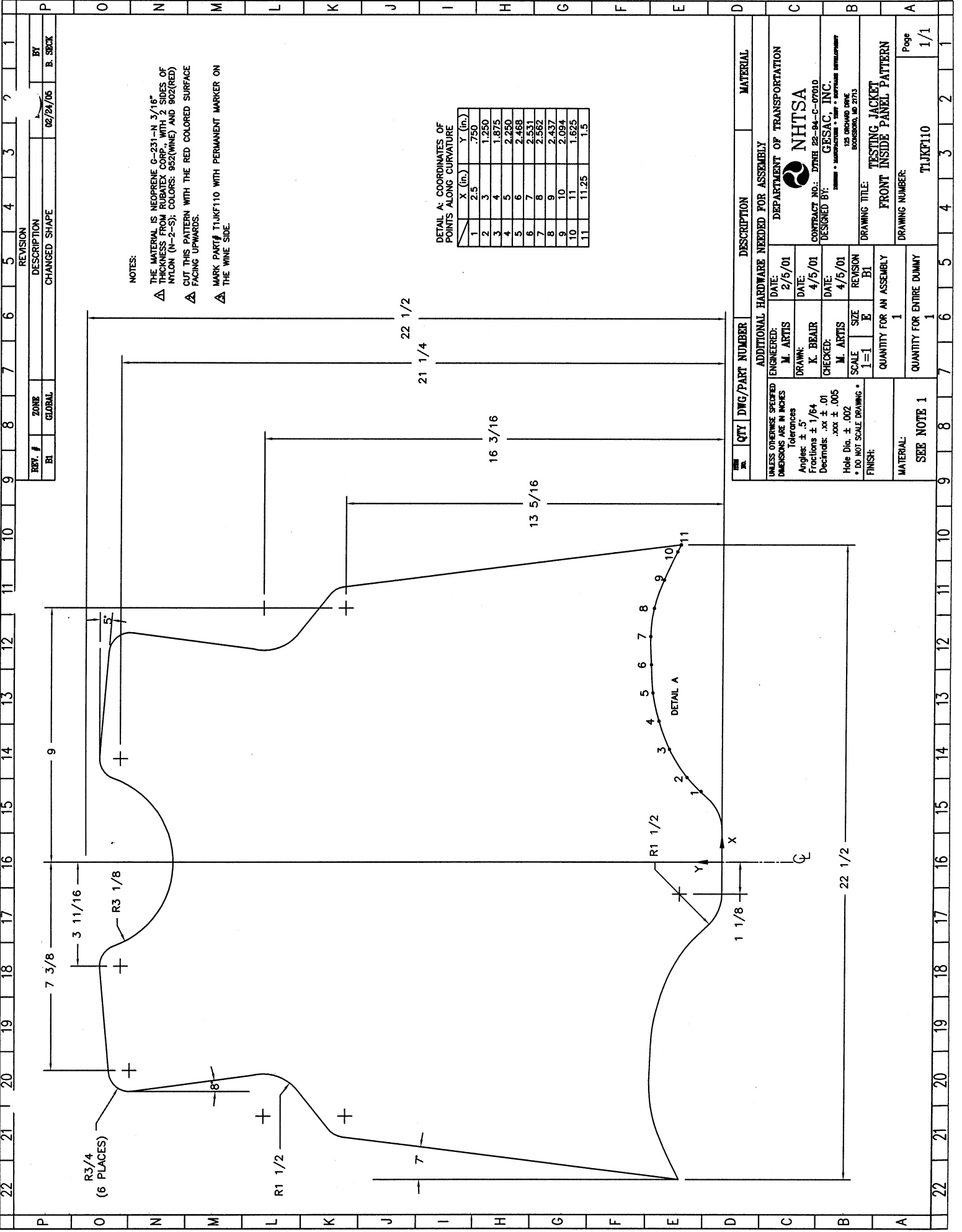
MATERIAL: SEE DWGS.

DEPARTMENT OF TRANSPORTATION
NHTSA
CONTRACT NO.: DTRC 28-94-C-07040
DESIGNED BY: GRSAC, INC.
15000 W. 10TH AVENUE
BOULDER, CO 80504

DRAWING TITLE: TESTING JACKET FRONT PANEL ASSEMBLY (INSIDE VIEW)

DRAWING NUMBER: T1JKM100

Page: 2/2



NOTES:

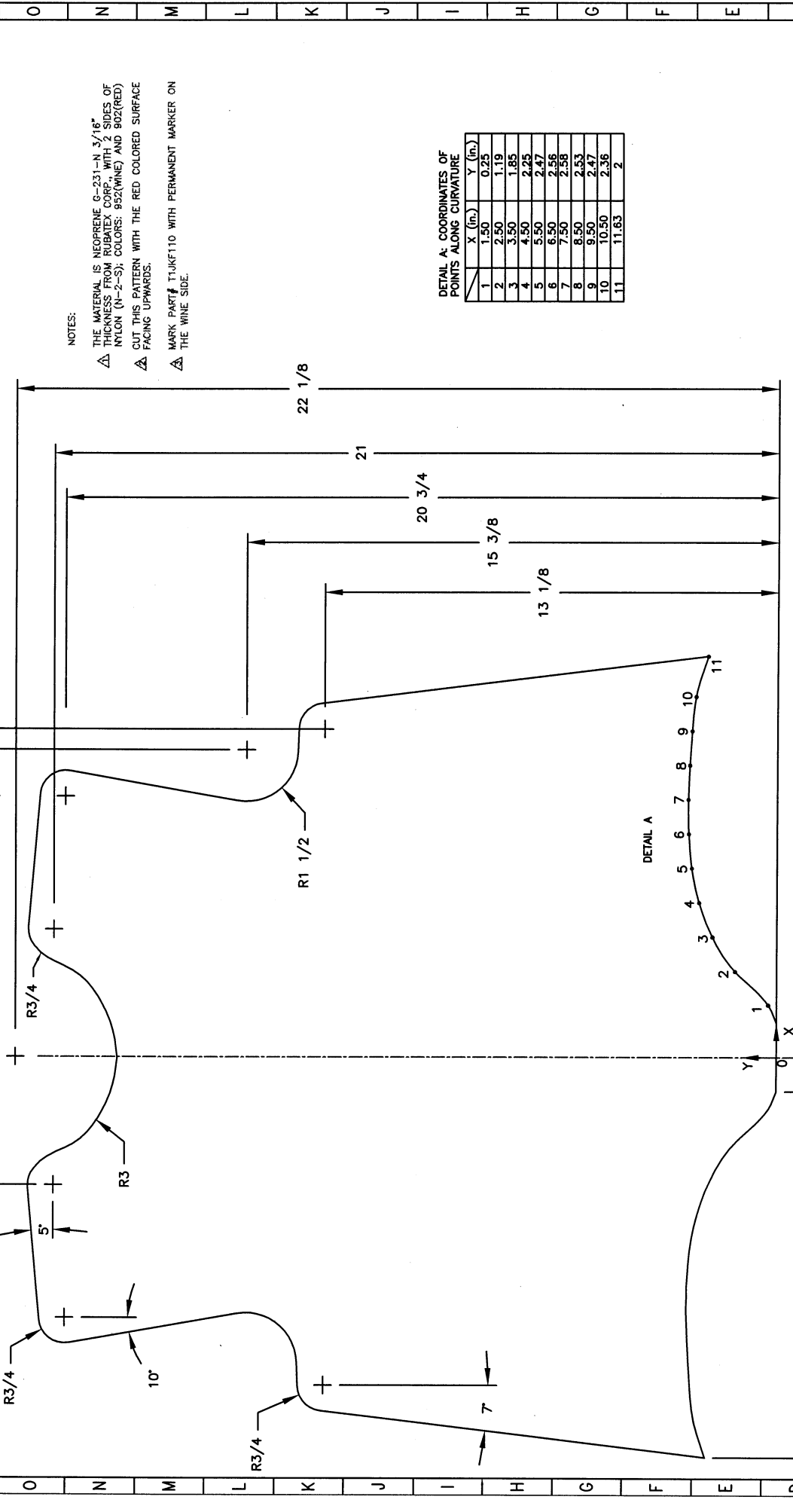
- △ THE MATERIAL IS NEOPRENE C-231-N, 3/16" THICKNESS FROM RUBATEX CORP. WITH 2 SIDES OF NYLON (N-2-S), COLORS: 952(WINE) AND 902(RED) CUT THIS PATTERN WITH THE RED COLORED SURFACE FACING UPWARDS.
- △ MARK PART# TJJKF110 WITH PERMANENT MARKER ON THE WINE SIDE.

REV. #	ZONE	DESCRIPTION	REVISION
B1	GLOBAL	CHANGED SHAPE	02/24/05
			BY B. SECK

QTY	DWG/PART NUMBER	DESCRIPTION	MATERIAL
1		ADDITIONAL HARDWARE NEEDED FOR ASSEMBLY	
UNLESS OTHERWISE SPECIFIED DIMENSIONS ARE IN INCHES		DEPARTMENT OF TRANSPORTATION	
Tolerances		NHTSA	
Angles: ± .5°	ENGINEERED: M. ARTIS	DATE: 2/5/01	
Fractions ± 1/64	DRAWN: K. BEAIR	DATE: 4/5/01	
Decimals: .xx ± .01	CHECKED: M. ARTIS	DATE: 4/5/01	
.xxx ± .005	SCALE: 1=1	REVISION: B1	
Hole Dia. ± .002	FINISH: DO NOT SCALE DRAWING	QUANTITY FOR AN ASSEMBLY: 1	
		QUANTITY FOR ENTIRE DUMMY: 1	
		MATERIAL: SEE NOTE 1	
		DRAWING TITLE: TESTING JACKET FRONT INSIDE PANEL PATTERN	
		DRAWING NUMBER: TJJKF110	
		Page: 1/1	

22 21 20 19 18 17 16 15 14 13 12 11 10 9 8 7 6 5 4 3 2 1

REV. #	ZONE	REVISION	DATE	BY
B1	GLOBAL	CHANGED SHAPE	02/24/05	B. SRICK



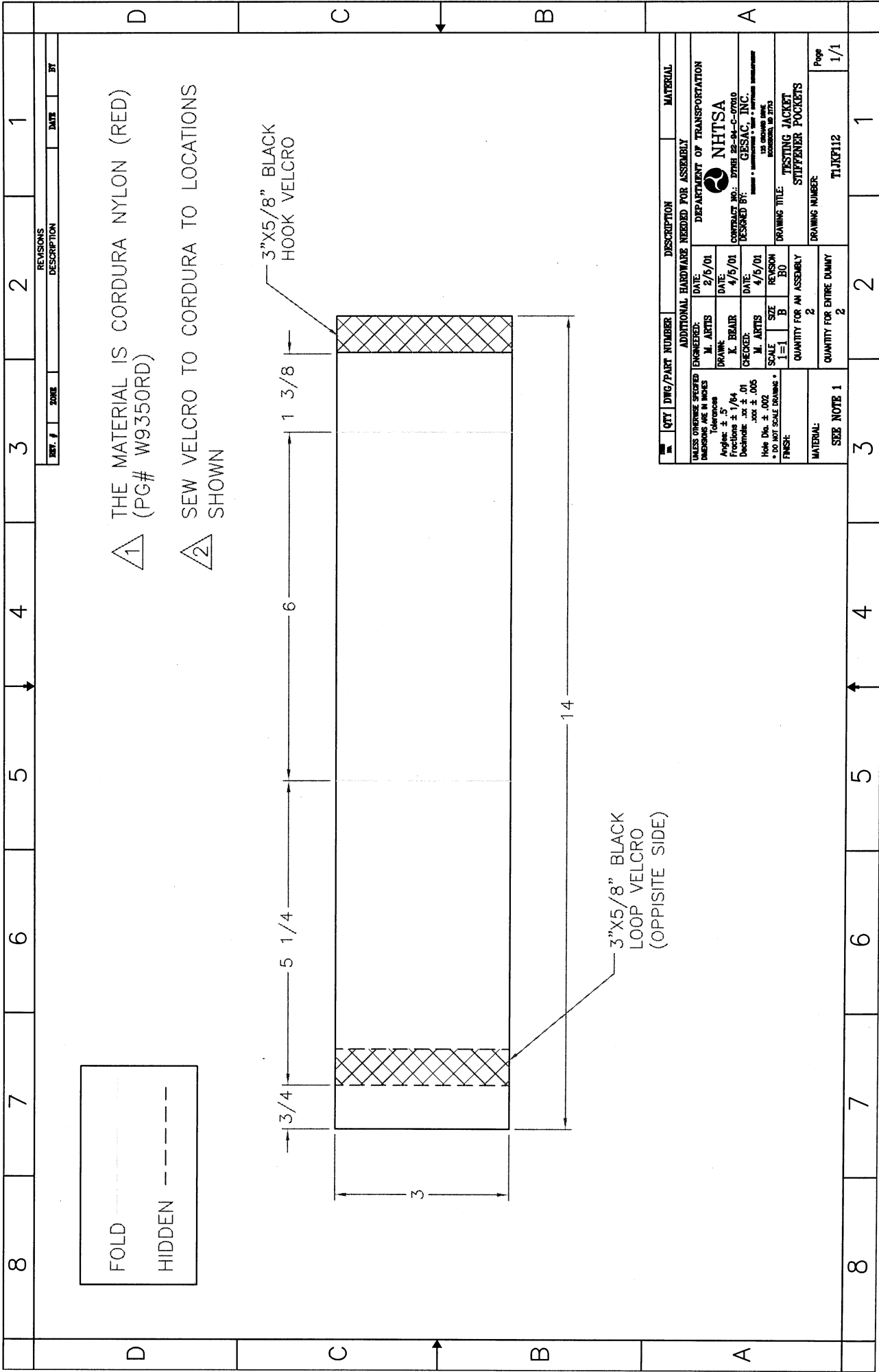
DETAIL A: COORDINATES OF POINTS ALONG CURVATURE

	X (in.)	Y (in.)
1	1.50	0.25
2	2.50	1.19
3	3.50	1.85
4	4.50	2.25
5	5.50	2.47
6	6.50	2.56
7	7.50	2.59
8	8.50	2.53
9	9.50	2.47
10	10.50	2.36
11	11.63	2

NOTES:
 △ THE MATERIAL IS NEOPRENE 6-231 WITH 3/16" THICKNESS FROM BOTH SIDES OF NYLON (N-2-S). COLORS: 992(WINE) AND 902(RED) CUT THIS PATTERN WITH THE RED COLORED SURFACE FACING UPWARDS.
 △ MARK PART # T1JKF110 WITH PERMANENT MARKER ON THE WINE SIDE.

QTY	DWG/PART NUMBER	DESCRIPTION	MATERIAL
1		TESTING JACKET FRONT OUTSIDE PANEL PATTERN	
ADDITIONAL HARDWARE NEEDED FOR ASSEMBLY ENGINEERED: M. ARTIS DATE: 2/5/01 DRAWN: K. BEAR DATE: 4/5/01 CHECKED: M. ARTIS DATE: 4/5/01 SCALE: 1=1 HOLE DIA. ± .002 FINISH: * DO NOT SCALE DRAWING *			
UNLESS OTHERWISE SPECIFIED DIMENSIONS ARE IN INCHES Tolerances Angles: ± .5° Fractions: ± 1/64 Decimals: .xx ± .01 .xxx ± .005			
CONTRACT NO.: DTRB 22-04-C-07010 DESIGNED BY: GESAC, INC. <small>DESIGN • MANUFACTURE • TEST • SERVICE SUPPORT</small> 125 OROUKO DRIVE ROCKFORD, IL 61113			
DRAWING TITLE: TESTING JACKET FRONT OUTSIDE PANEL PATTERN DRAWING NUMBER: T1JKF111 QUANTITY FOR AN ASSEMBLY: 1 QUANTITY FOR ENTIRE DUMMY: 1 MATERIAL: SEE NOTE 1 SEE NOTE 1			
DEPARTMENT OF TRANSPORTATION NHTSA CONTRACT NO.: DTRB 22-04-C-07010 DESIGNED BY: GESAC, INC.			
Page 1/1			

P O N M L K J I H G F E D C B A



1 THE MATERIAL IS CORDURA NYLON (RED)
(PG# W9350RD)

2 SEW VELCRO TO CORDURA TO LOCATIONS SHOWN

FOLD
HIDDEN

3"X5/8" BLACK HOOK VELCRO

3"X5/8" BLACK LOOP VELCRO (OPPOSITE SIDE)

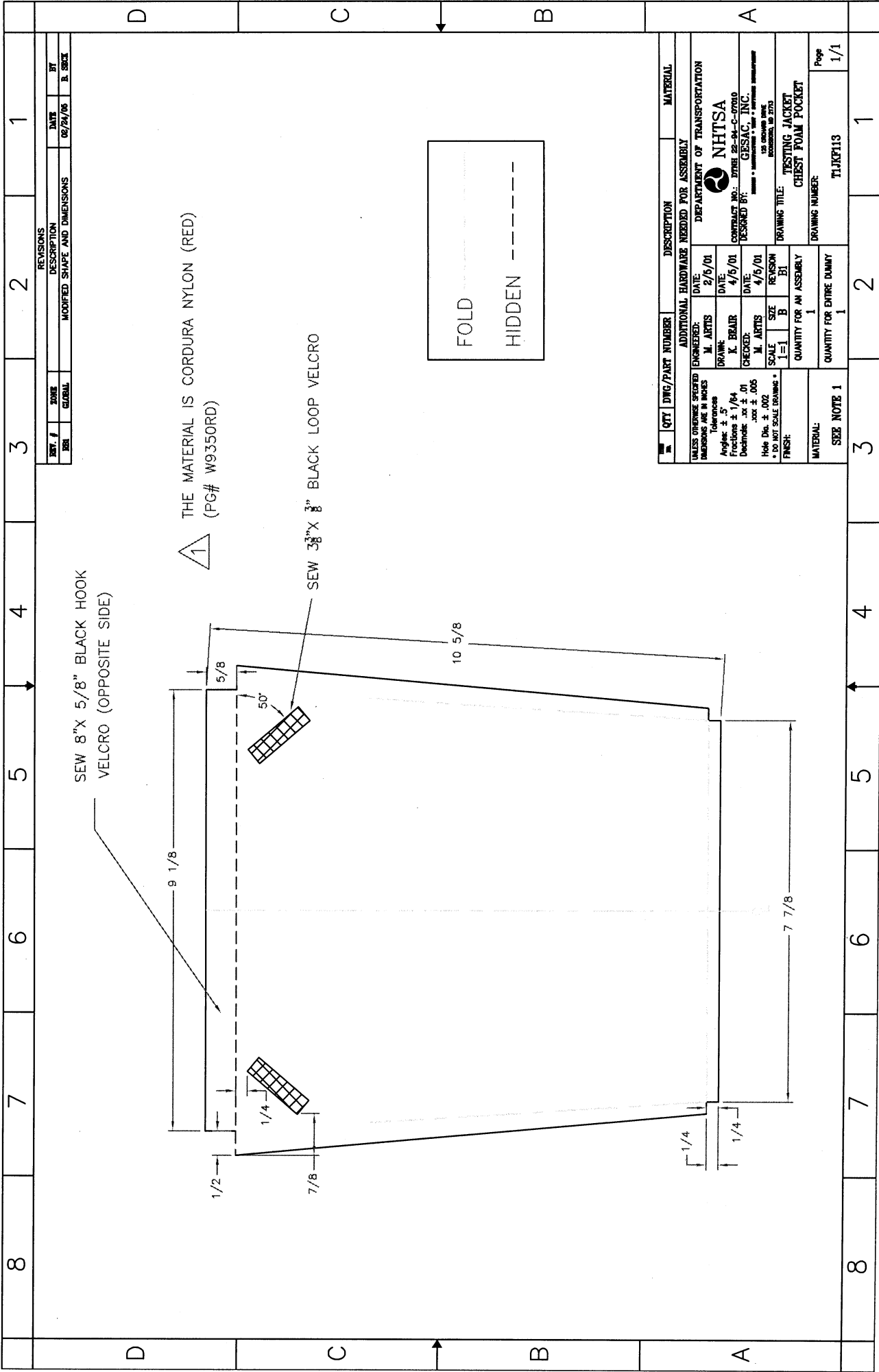
REV. #	ZONE	DESCRIPTION	DATE	BY
1				
2				
3				
4				
5				
6				
7				
8				

QTY	DWG/PART NUMBER	DESCRIPTION	MATERIAL
2		TESTING JACKET STIFFENER POCKETS	
2		QUANTITY FOR AN ASSEMBLY	
2		QUANTITY FOR ENTIRE DUMMY	
1		SEE NOTE 1	
1		DRAWING NUMBER: TIJKF112	
1		Page	1/1

UNLESS OTHERWISE SPECIFIED DIMENSIONS ARE IN INCHES		TOLERANCES	
Angles	± .5	Drawn	M. ARTIS
Fractions	± 1/64	DATE	2/6/01
Decimals	.xx ± .01	Drawn	A. BEAR
Hole Dia.	± .002	CHECKED	M. ARTIS
± .007 SCALE DIMENSIONS		DATE	4/5/01
FINISH:		SCALE	1"=1"
		SIZE	B0
		REVISION	

ADDITIONAL HARDWARE NEEDED FOR ASSEMBLY		DEPARTMENT OF TRANSPORTATION	
ENGINEERED:	M. ARTIS	DATE:	2/6/01
DRAWN:	A. BEAR	DATE:	4/5/01
CHECKED:	M. ARTIS	DATE:	4/5/01
SCALE:	1"=1"	SIZE:	B0
REVISION:			

NHTSA	
CONTRACT NO.: DTFR 28-94-C-07010	
DESIGNED BY: GESAC, INC.	
135 SCHUBB DR. WASHINGTON, MD 2773	
DRAWING TITLE: TESTING JACKET STIFFENER POCKETS	
DRAWING NUMBER: TIJKF112	



REV. /		REVISIONS		DATE	
REV. /	DATE	DESCRIPTION	REV.	DATE	BY
	02/24/06	MODIFIED SHAPE AND DIMENSIONS			B. SECK

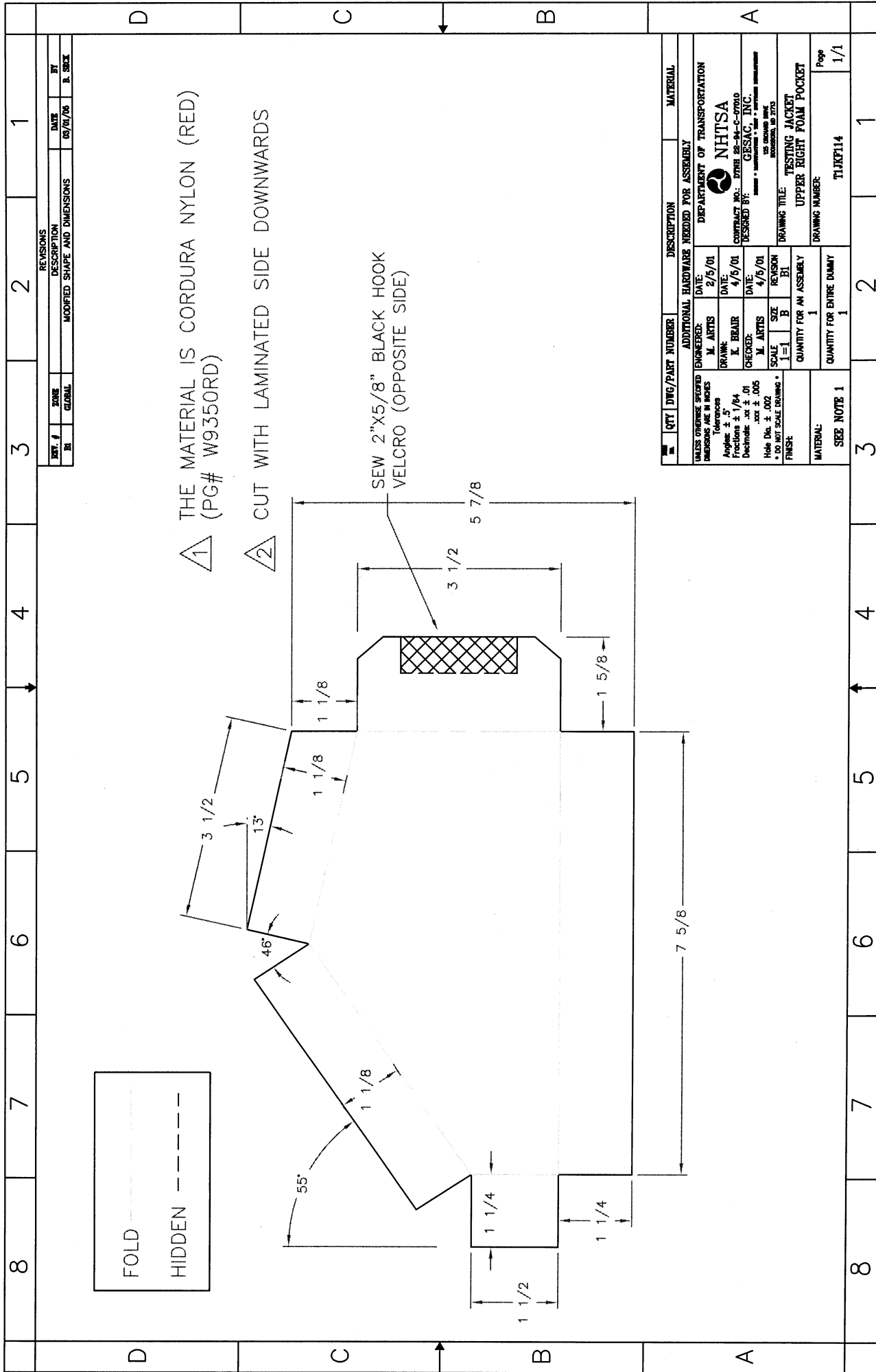
QTY	DESCR	DESCRIPTION	MATERIAL
1	TESTING JACKET	TESTING JACKET	
1	CHEST FOAM POCKET	CHEST FOAM POCKET	

ADDITIONAL HARDWARE NEEDED FOR ASSEMBLY	
ENGINEERED:	DATE: 2/6/01
M. ARTIS	DATE: 4/9/01
DRAWN:	DATE: 4/9/01
K. BEAR	DATE: 4/9/01
CHECKED:	DATE: 4/9/01
M. ARTIS	DATE: 4/9/01
SCALE	SIZE
1=1	B
1=1	B1
QUANTITY FOR AN ASSEMBLY	1
QUANTITY FOR ENTIRE DUMMY	1

UNLESS OTHERWISE SPECIFIED	
DIMENSIONS ARE IN INCHES	
Tolerances	
Angles:	± .5
Fractions:	± 1/64
Decimals:	.xx ± .01
Whole Dec.:	± .002
± .001 SCALE DIMENSIONS	

DEPARTMENT OF TRANSPORTATION	
NHTSA	
CONTRACT NO.: DTNHS 22-04-C-07010	
DESIGNED BY: GESAC, INC.	
135 BOWLING BLVD.	
ROCKFORD, IL 61113	

DRAWING TITLE:	
TESTING JACKET	
DRAWING NUMBER:	
TJJKF113	
Page	
1/1	

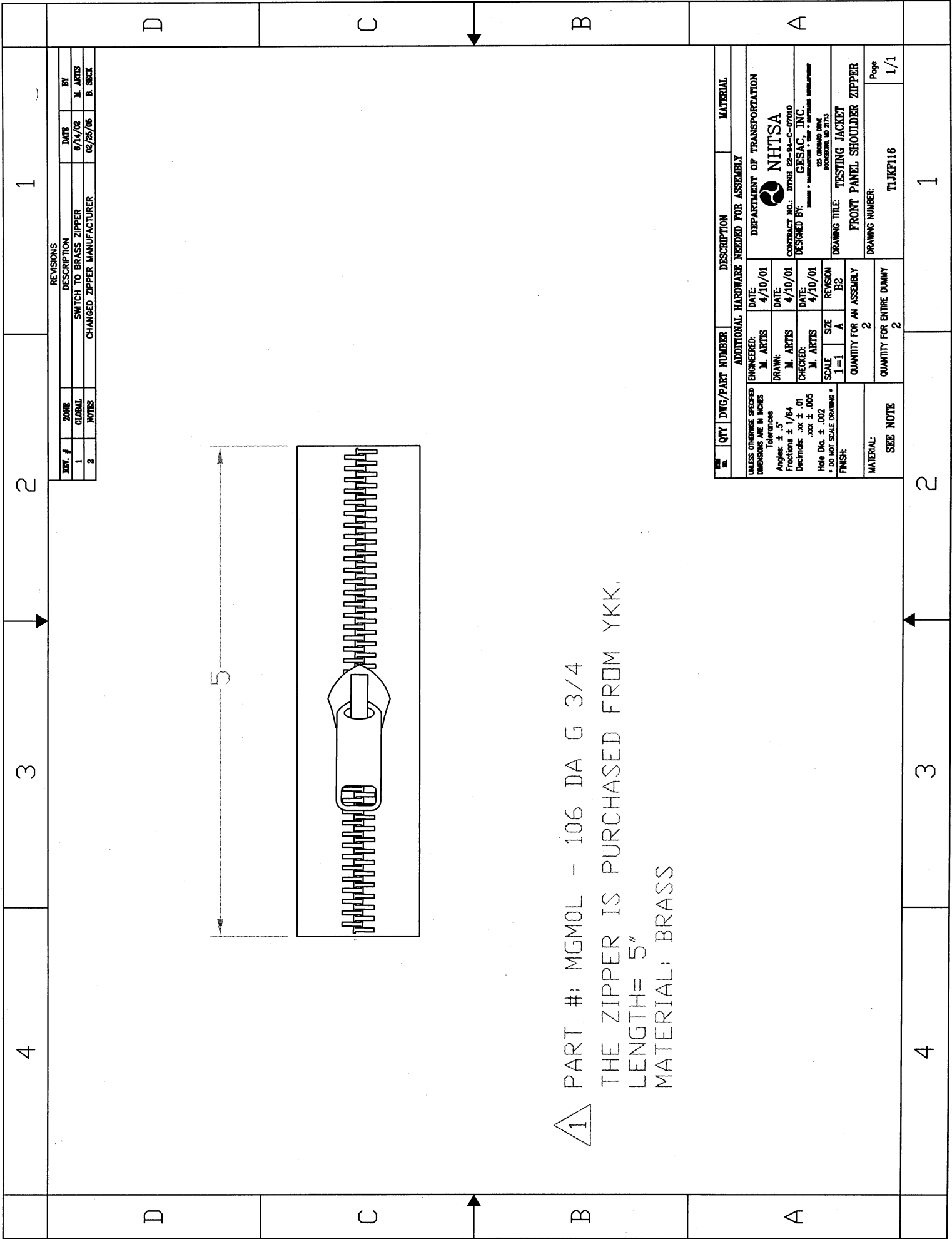


REV. #		DATE	BY
1	3	02/07/06	R. SECK

REVISIONS		DATE	BY
1	2	02/07/06	R. SECK

QTY	DWG/PART NUMBER	DESCRIPTION	MATERIAL
1		TESTING JACKET UPPER RIGHT FOAM POCKET	
1		SEE NOTE 1	

UNLESS OTHERWISE SPECIFIED		ENGINEERED:		DATE:		MATERIAL:	
DIMENSIONS ARE IN INCHES		M. ARTIS	2/5/01	DEPARTMENT OF TRANSPORTATION		NHTSA	
Tolerances		DATE:	4/5/01	CONTRACT NO.: DTMB 93-04-C-0700		DESIGNED BY: GESAC, INC.	
Angles: ± .5°		SCALE:	1" = 1"	DRAWING TITLE: TESTING JACKET		DRAWING NUMBER: TIJKF114	
Fractions: ± 1/64		SIZE:	B1	UPPER RIGHT FOAM POCKET		Page: 1/1	
Decimals: .xx ± .01		REVISION:	B1				
Hole Dia: ± .002		QUANTITY FOR AN ASSEMBLY:	1				
± .001 SCALE DIMENSIONS		QUANTITY FOR ENTIRE DUMMY:	1				
FINISH:							

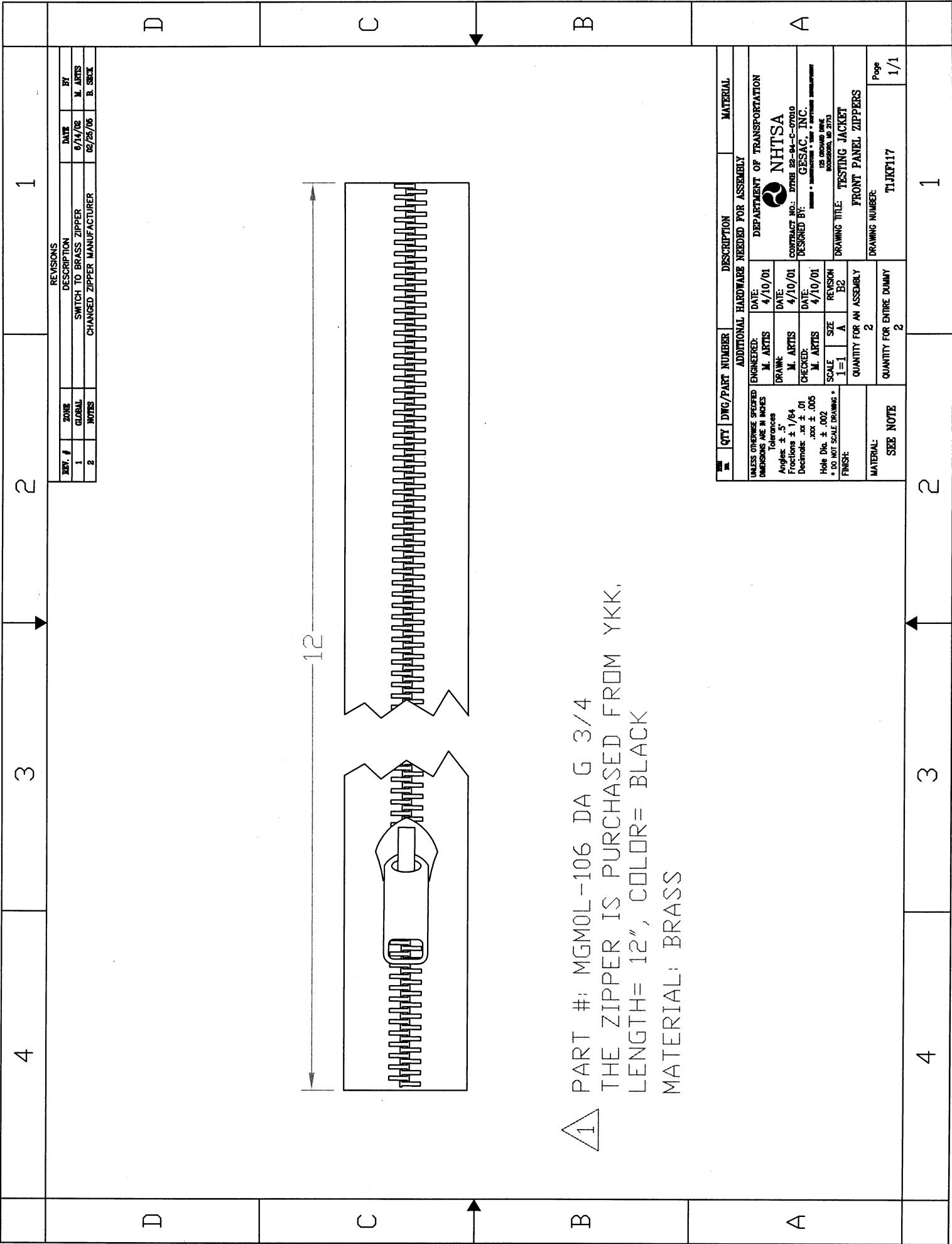


① PART #: MGMOL - 106 DA G 3/4
 THE ZIPPER IS PURCHASED FROM YKK.
 LENGTH= 5"
 MATERIAL: BRASS

REV. #	ZONE	DESCRIPTION	DATE	BY
1	GLOBAL	SWITCH TO BRASS ZIPPER	6/14/02	M. ARTIS
2	NOTES	CHANGED ZIPPER MANUFACTURER	02/26/06	B. SARK

QTY	DWG/PART NUMBER	DESCRIPTION	MATERIAL
UNLESS OTHERWISE SPECIFIED			
DIMENSIONS ARE IN INCHES			
Tolerances			
Angles ± 5'			
Fractions ± 1/64			
Decimals .xx ± .01			
.xxx ± .005			
Hole Dia. ± .002			
* DO NOT SCALE DRAWING *			
FINISH:			
SCALE		SIZE	REVISION
1=1		A	B2
QUANTITY FOR AN ASSEMBLY		DRAWING TITLE: TESTING JACKET	
2		FRONT PANEL SHOULDER ZIPPER	
QUANTITY FOR ENTIRE DUMMY		DRAWING NUMBER:	
2		T1JKPT16	
SEE NOTE		Page	
		1/1	

QTY	DWG/PART NUMBER	DESCRIPTION	MATERIAL
ADDITIONAL HARDWARE NEEDED FOR ASSEMBLY			
DEPARTMENT OF TRANSPORTATION			
NHTSA			
CONTRACT NO.: DTMB 22-04-C-07010			
DESIGNED BY: GESAC INC			
125 ORCHARD DRIVE			
ROCKFORD, IL 61153			



REVISIONS		
REV. #	ZONE	DATE
1	GLOBAL	6/14/02
2	NOTES	02/25/06

DESCRIPTION	BY
SWITCH TO BRASS ZIPPER	M. ARTIS
CHANGED ZIPPER MANUFACTURER	B. SECK

QTY	DWG/PART NUMBER	DESCRIPTION	MATERIAL
2		FRONT PANEL ZIPPERS	BRASS

UNLESS OTHERWISE SPECIFIED DIMENSIONS ARE IN INCHES	
Angularities: ± .5	
Fractions: ± 1/64	
Decimals: .xx ± .005	
Hole Dia: ± .002	
* DO NOT SCALE DRAWING *	

ENGINEERED	DATE
M. ARTIS	4/10/01

DRAWN	DATE
M. ARTIS	4/10/01

CHECKED	DATE
M. ARTIS	4/10/01

SCALE	SIZE	REVISION
1=1	A	B2

QUANTITY FOR AN ASSEMBLY
2

QUANTITY FOR ENTIRE DUMMY
2

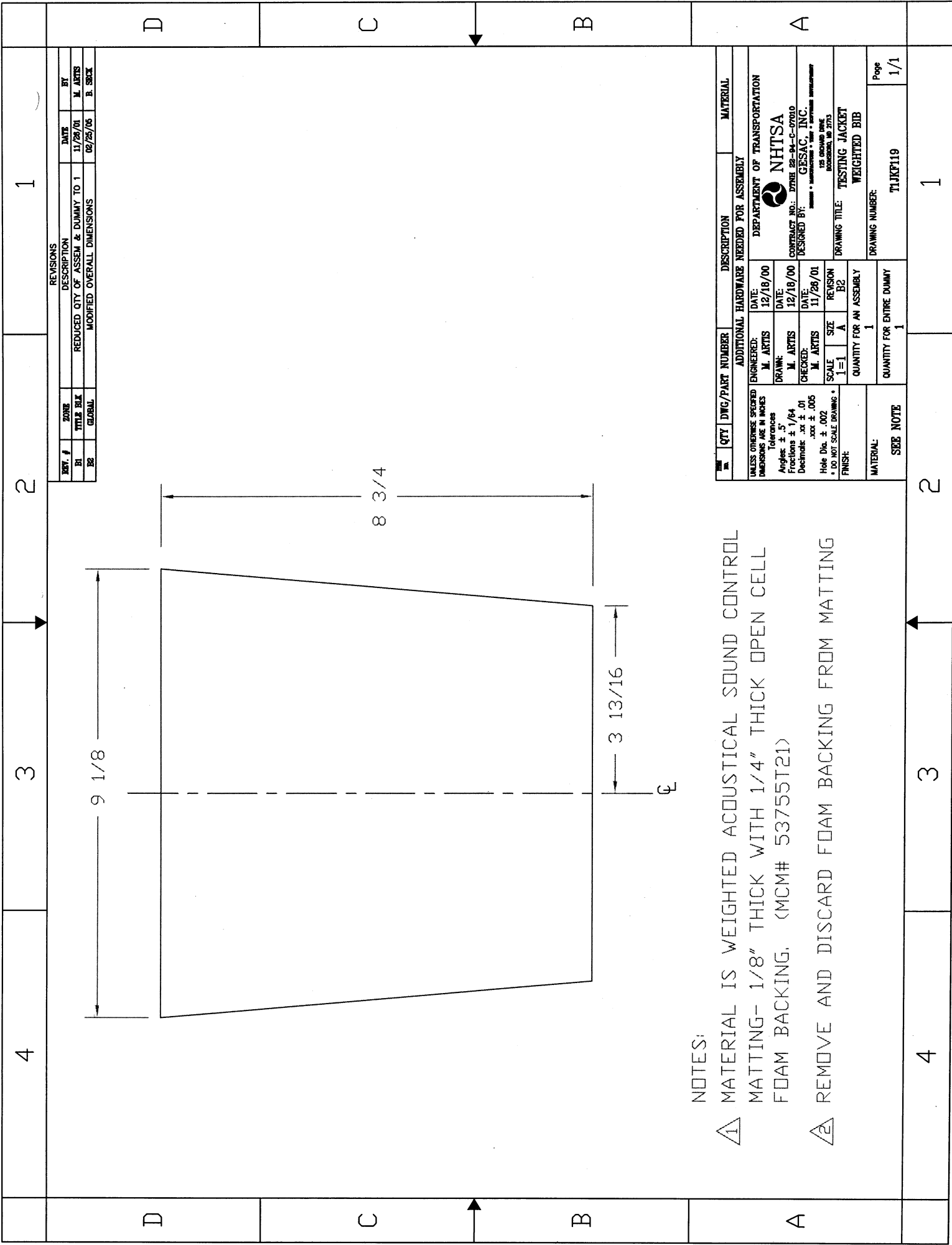
MATERIAL
SEE NOTE

DRAWING TITLE
TESTING JACKET

DRAWING NUMBER
TJJK117

Page
1/1

① PART #: MGMOL-106 DA G 3/4
 THE ZIPPER IS PURCHASED FROM YKK.
 LENGTH= 12", COLOR= BLACK
 MATERIAL: BRASS



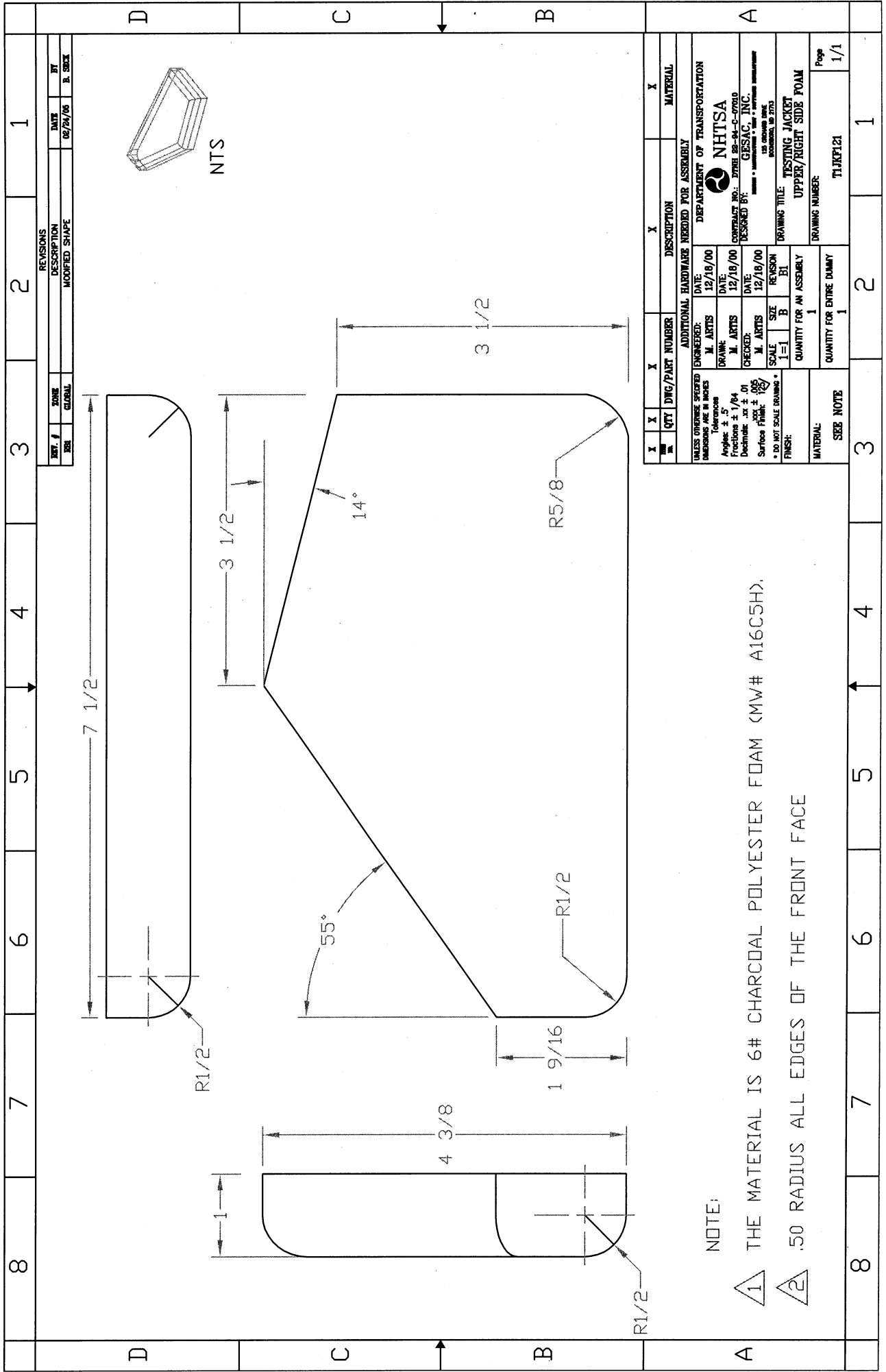
NOTES:

- ① MATERIAL IS WEIGHTED ACOUSTICAL SOUND CONTROL MATTING- 1/8" THICK WITH 1/4" THICK OPEN CELL FOAM BACKING. (MCM# 53755T21)
- ② REMOVE AND DISCARD FOAM BACKING FROM MATTING

REV. #	QTY	DWG/PART NUMBER	DESCRIPTION	MATERIAL
1	1		TESTING JACKET	
2	1		WEIGHTED BIB	
3	1		QUANTITY FOR AN ASSEMBLY	
4	1		QUANTITY FOR ENTIRE DUMMY	

UNLESS OTHERWISE SPECIFIED DIMENSIONS ARE IN INCHES	ENGINEERED: M. ARTIS	DATE: 12/18/00	ADDITIONAL HARDWARE NEEDED FOR ASSEMBLY	DEPARTMENT OF TRANSPORTATION
Tolerances	DRAWN: M. ARTIS	DATE: 12/18/00		NHTSA
Angles: ± .5°	CHECKED: M. ARTIS	DATE: 11/26/01		CONTRACT NO.: DTMB 22-94-C-07010
Fractions: ± 1/64				DESIGNED BY: GESAC, INC.
Decimals: .xxx ± .005				125 OGDON DR
Hole Dia. ± .002	SCALE: 1=1	SIZE: A		ANN ARBOR, MI 48106
* DO NOT SCALE DRAWING *				
FINISH:				

MATERIAL:	SEE NOTE	DRAWING NUMBER:	TIJKF119	Page	1/1
-----------	----------	-----------------	----------	------	-----



REVISIONS		DATE	BY
REV. #	DESCRIPTION	02/24/06	B. GREE
001	MODIFIED SHAPE		

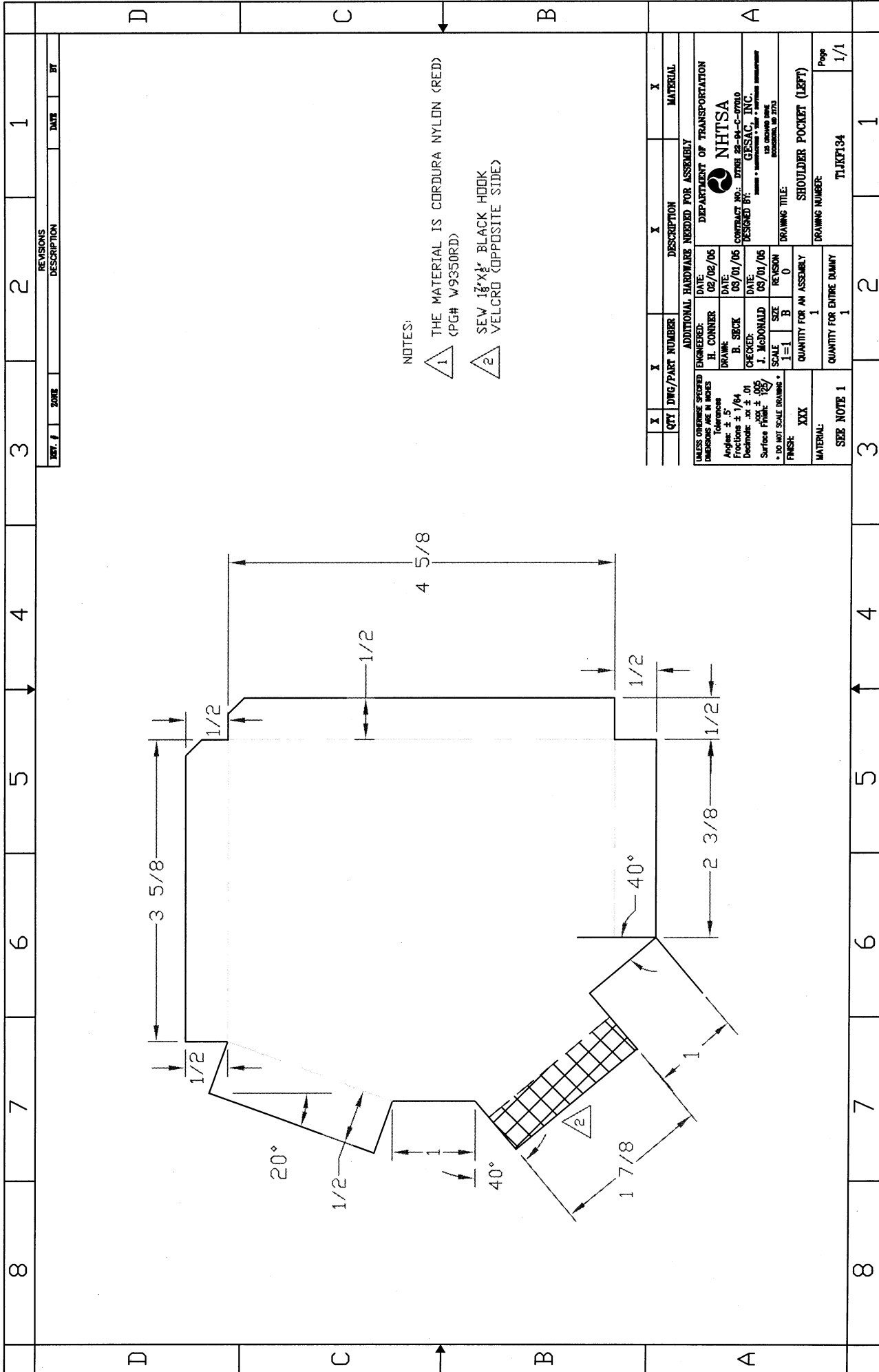
QTY	DMG/PART NUMBER	DESCRIPTION	MATERIAL
1		TESTING JACKET UPPER/RIGHT SIDE, FOAM	
1		QUANTITY FOR AN ASSEMBLY	
1		QUANTITY FOR ENTIRE DUMMY	
SEE NOTE			
DRAWING NUMBER			T1JKP121
Page			1/1

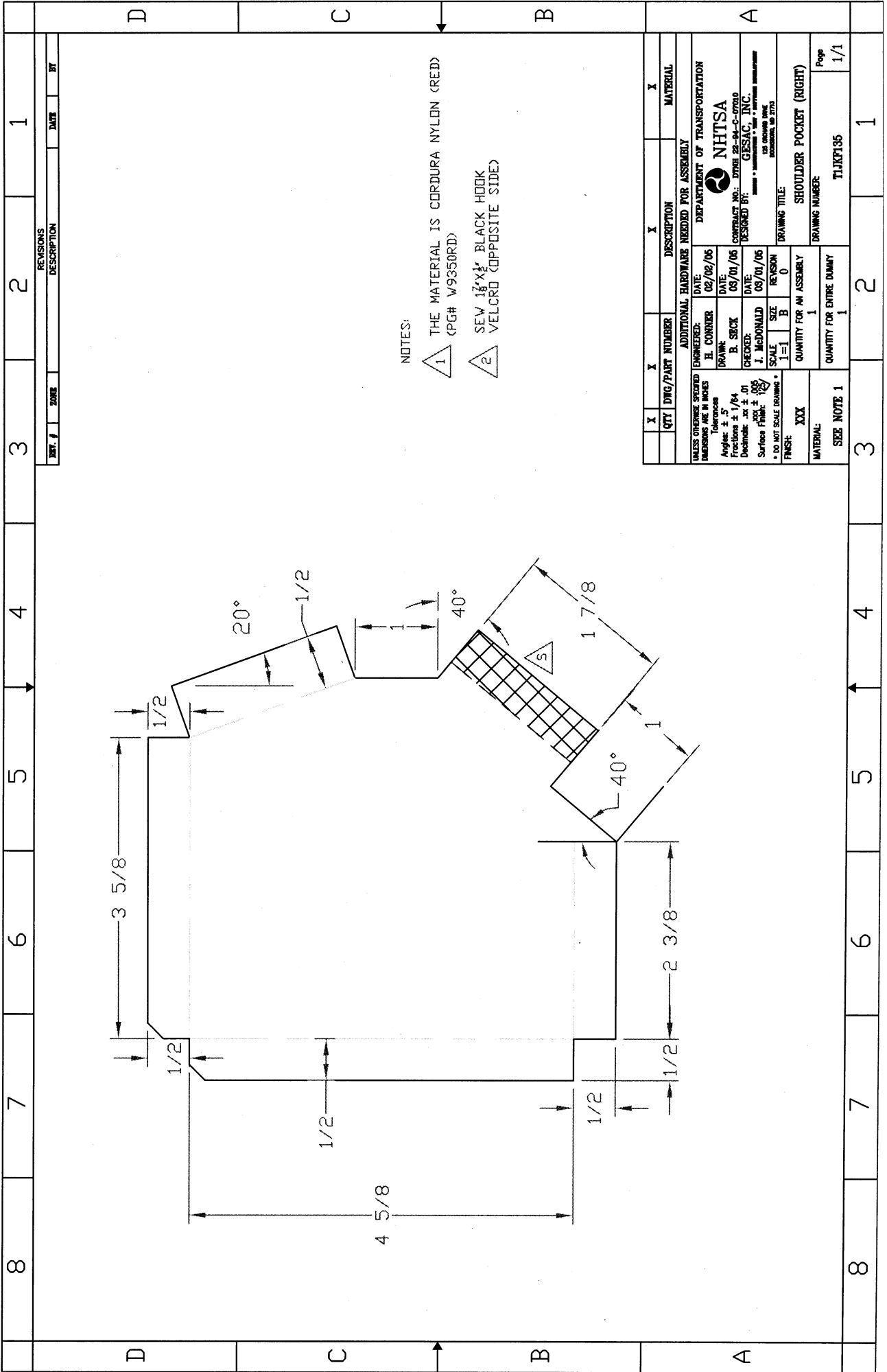
NOTE:

1 THE MATERIAL IS 6# CHARCOAL POLYESTER FOAM (MW# A16C5H).

2 .50 RADIUS ALL EDGES OF THE FRONT FACE

16	15	14	13	12	11	10	9	8	7	6	5	4	3	2	1																																																																																																				
J	I	H	G	F	E	D	C	B	A							J																																																																																																			
<p>NOTES:</p> <p>1 PATTERN IS SHOWN WITH INSIDE (NEOPRENE) UP.</p> <p>2 SEW 4" x 5" PIECE OF LOOP VELCRO CENTERED AT THE AREA SPECIFIED DIRECTLY TO NEOPRENE ONLY.</p> <p>3 CORDURA AND NEOPRENE LAYERS ARE SEWN TOGETHER AND LINED WITH RED BIAS TAPE. NEOPRENE IS TO BE STRETCHED TO 28" DURING SEWING.</p> <p>4 ALIGN WITH BOTTOM FRONT EDGE OF THE FRONT PATTERN. (T1JKF100 PG. 2).</p> <p>5 SEW THE CROTCH STRAP ASSEMBLY TO THE FRONT PANEL ASSEMBLY (TJKF100 PG. 2) WITH THE CORDURA SIDE OF THE STRAP FACING THE NEOPRENE SIDE OF THE JACKET FRONT PANEL ASSEMBLY.</p> <p>6 MARK PART# T1JKF130 WITH PERMANENT MARKER ON THE INSIDE AT THE AREA SPECIFIED.</p>																																																																																																																			
<table border="1"> <tr> <td>3</td><td>1</td><td>T1JKF133</td><td>REAR CROTCH STRAP LOOP VELCRO</td><td>BLACK LOOP VELCRO</td> </tr> <tr> <td>2</td><td>1</td><td>T1JKF132</td><td>OUTER CROTCH STRAP PATTERN</td><td>CORDURA</td> </tr> <tr> <td>1</td><td>1</td><td>T1JKF131</td><td>INNER CROTCH STRAP PATTERN</td><td>NEOPRENE</td> </tr> <tr> <td>QTY</td><td>DRG/PART NUMBER</td><td colspan="3">DESCRIPTION</td> </tr> <tr> <td colspan="5">ADDITIONAL HARDWARE NEEDED FOR ASSEMBLY</td> </tr> <tr> <td colspan="2">UNLESS OTHERWISE SPECIFIED DIMENSIONS ARE IN INCHES</td><td>ENGINEERED:</td><td>DATE:</td><td>DEPARTMENT OF TRANSPORTATION</td> </tr> <tr> <td colspan="2">Tolerances</td><td>M. ARTS</td><td>2/10/01</td><td rowspan="4"> NHTSA CONTRACT NO.: DPMR 01-0-0000 DESIGNED BY: GESSAC/JUC DRAWN BY: GESSAC/JUC 125 CONGRESS DRIVE WASHINGTON, DC 20535 </td> </tr> <tr> <td colspan="2">Angles: ± .5°/64</td><td>DRANK</td><td>DATE:</td> </tr> <tr> <td colspan="2">Positions: ± 1/64</td><td>K. BRABR</td><td>4/5/01</td> </tr> <tr> <td colspan="2">Decimals: ± .01</td><td>CHECKED:</td><td>DATE:</td> </tr> <tr> <td colspan="2">Hole Dia: ± .002</td><td>M. ARTS</td><td>4/5/01</td> </tr> <tr> <td colspan="2">± DO NOT SCALE DRAWING</td><td>SCALE</td><td>SIZE</td><td>REVISION</td> </tr> <tr> <td colspan="2">FINISH:</td><td>1=1</td><td>D</td><td>B1</td> </tr> <tr> <td colspan="2">MATERIAL:</td><td colspan="3">QUANTITY FOR AN ASSEMBLY</td> </tr> <tr> <td colspan="2">SEE NOTE 1</td><td colspan="3">1</td> </tr> <tr> <td colspan="2"></td><td colspan="3">QUANTITY FOR ENTIRE DUMMY</td> </tr> <tr> <td colspan="2"></td><td colspan="3">1</td> </tr> <tr> <td colspan="2"></td><td colspan="3">DRAWING NUMBER</td> </tr> <tr> <td colspan="2"></td><td colspan="3">T1JKF130</td> </tr> <tr> <td colspan="2"></td><td colspan="3">Pop</td> </tr> <tr> <td colspan="2"></td><td colspan="3">1/1</td> </tr> </table>															3	1	T1JKF133	REAR CROTCH STRAP LOOP VELCRO	BLACK LOOP VELCRO	2	1	T1JKF132	OUTER CROTCH STRAP PATTERN	CORDURA	1	1	T1JKF131	INNER CROTCH STRAP PATTERN	NEOPRENE	QTY	DRG/PART NUMBER	DESCRIPTION			ADDITIONAL HARDWARE NEEDED FOR ASSEMBLY					UNLESS OTHERWISE SPECIFIED DIMENSIONS ARE IN INCHES		ENGINEERED:	DATE:	DEPARTMENT OF TRANSPORTATION	Tolerances		M. ARTS	2/10/01	 NHTSA CONTRACT NO.: DPMR 01-0-0000 DESIGNED BY: GESSAC/JUC DRAWN BY: GESSAC/JUC 125 CONGRESS DRIVE WASHINGTON, DC 20535	Angles: ± .5°/64		DRANK	DATE:	Positions: ± 1/64		K. BRABR	4/5/01	Decimals: ± .01		CHECKED:	DATE:	Hole Dia: ± .002		M. ARTS	4/5/01	± DO NOT SCALE DRAWING		SCALE	SIZE	REVISION	FINISH:		1=1	D	B1	MATERIAL:		QUANTITY FOR AN ASSEMBLY			SEE NOTE 1		1					QUANTITY FOR ENTIRE DUMMY					1					DRAWING NUMBER					T1JKF130					Pop					1/1		
3	1	T1JKF133	REAR CROTCH STRAP LOOP VELCRO	BLACK LOOP VELCRO																																																																																																															
2	1	T1JKF132	OUTER CROTCH STRAP PATTERN	CORDURA																																																																																																															
1	1	T1JKF131	INNER CROTCH STRAP PATTERN	NEOPRENE																																																																																																															
QTY	DRG/PART NUMBER	DESCRIPTION																																																																																																																	
ADDITIONAL HARDWARE NEEDED FOR ASSEMBLY																																																																																																																			
UNLESS OTHERWISE SPECIFIED DIMENSIONS ARE IN INCHES		ENGINEERED:	DATE:	DEPARTMENT OF TRANSPORTATION																																																																																																															
Tolerances		M. ARTS	2/10/01	 NHTSA CONTRACT NO.: DPMR 01-0-0000 DESIGNED BY: GESSAC/JUC DRAWN BY: GESSAC/JUC 125 CONGRESS DRIVE WASHINGTON, DC 20535																																																																																																															
Angles: ± .5°/64		DRANK	DATE:																																																																																																																
Positions: ± 1/64		K. BRABR	4/5/01																																																																																																																
Decimals: ± .01		CHECKED:	DATE:																																																																																																																
Hole Dia: ± .002		M. ARTS	4/5/01																																																																																																																
± DO NOT SCALE DRAWING		SCALE	SIZE	REVISION																																																																																																															
FINISH:		1=1	D	B1																																																																																																															
MATERIAL:		QUANTITY FOR AN ASSEMBLY																																																																																																																	
SEE NOTE 1		1																																																																																																																	
		QUANTITY FOR ENTIRE DUMMY																																																																																																																	
		1																																																																																																																	
		DRAWING NUMBER																																																																																																																	
		T1JKF130																																																																																																																	
		Pop																																																																																																																	
		1/1																																																																																																																	
16	15	14	13	12	11	10	9	8	7	6	5	4	3	2	1																																																																																																				





NOTES:

- 1 THE MATERIAL IS CORDURA NYLON (RED)
(PG# W9950RD)
- 2 SEW 1 1/2" x 1/2" BLACK HOOK
VELCRO (OPPOSITE SIDE)

REV. #	ZONE	DESCRIPTION	DATE	BY
1				
2				
3				
4				
5				
6				
7				
8				

QTY	DWG/PART NUMBER	DESCRIPTION	MATERIAL
1		SHOULDER POCKET (RIGHT)	

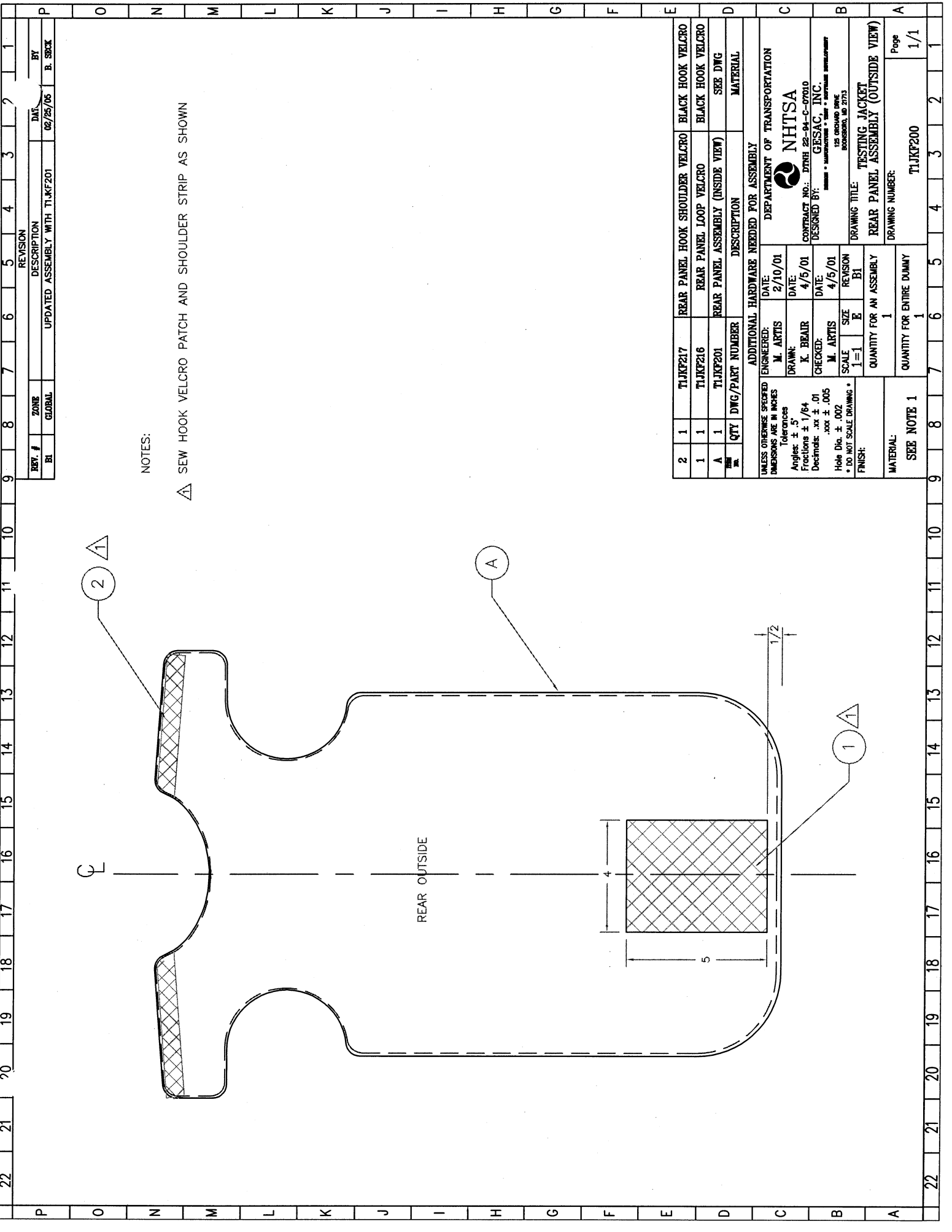
ENGINEERED:	DATE:	DEPARTMENT OF TRANSPORTATION
H. CONNER	02/02/05	
DRAWN:		
B. SECK	03/01/05	
CHECKED:		
J. McDONALD	03/01/05	
SCALE:	SIZE	REVISION
1=1	B	0
QUANTITY FOR AN ASSEMBLY		
1		
QUANTITY FOR ENTIRE DUMMY		
1		
MATERIAL:		
SEE NOTE 1		

UNLESS OTHERWISE SPECIFIED	ADDITIONAL HARDWARE NEEDED FOR ASSEMBLY
DIMENSIONS ARE IN INCHES	
Tolerances	
Angles: ± .5	
Fractions: ± 1/64	
Decimals: ± .01	
Surface Finish: 125	
* DO NOT SCALE DRAWING *	
FINISH: XXX	
QUANTITY FOR AN ASSEMBLY	
1	
QUANTITY FOR ENTIRE DUMMY	
1	
MATERIAL:	
SEE NOTE 1	

CONTRACT NO.	DESIGNED BY:	DRAWING TITLE:
DTMB 98-94-C-0700	GESSAG, INC.	SHOULDER POCKET (RIGHT)
	125 MICHAEL DRIVE	
	ROCKFORD, IL 61103	

DRIVING	DESCRIPTION	MATERIAL
X		X

REV. #	ZONE	DESCRIPTION	DATE	BY
1				
2				
3				
4				
5				
6				
7				
8				



NOTES:

△ SEW HOOK VELCRO PATCH AND SHOULDER STRIP AS SHOWN

REV. #	ZONE	DESCRIPTION	DATE	BY
1	GLOBAL	UPDATED ASSEMBLY WITH T1JKF201	02/25/05	B. SECK

REV. #	ZONE	DESCRIPTION	DATE	BY
1	GLOBAL	UPDATED ASSEMBLY WITH T1JKF201	02/25/05	B. SECK

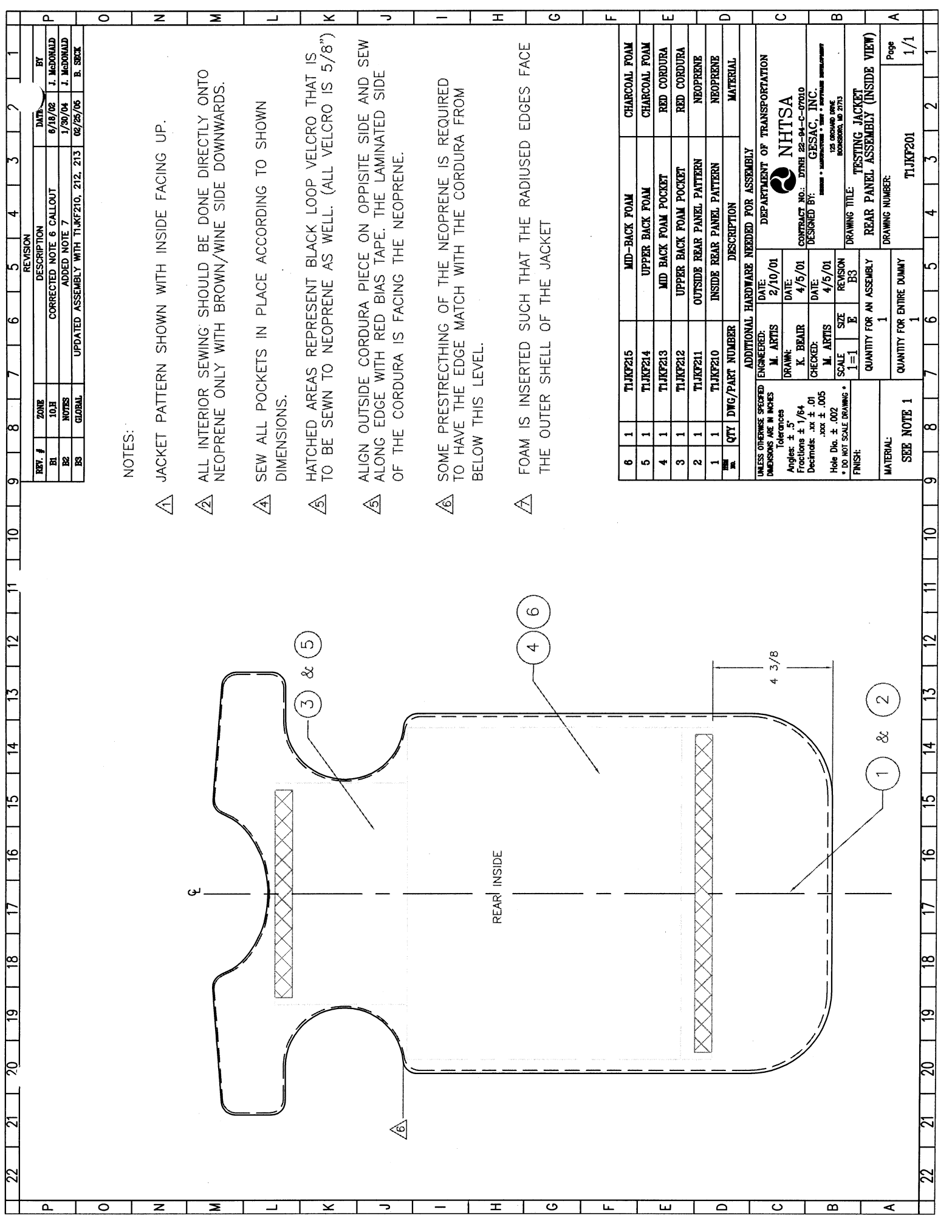
QTY	DWG/PART NUMBER	DESCRIPTION	MATERIAL
2	T1JKF217	REAR PANEL HOOK SHOULDER VELCRO	BLACK HOOK VELCRO
1	T1JKF216	REAR PANEL LOOP VELCRO	BLACK HOOK VELCRO
A	T1JKF201	REAR PANEL ASSEMBLY (INSIDE VIEW)	SEE DWG

ADDITIONAL HARDWARE NEEDED FOR ASSEMBLY	
ENGINEERED:	M. ARTIS
DATE:	2/10/01
DRAWN:	K. BEAR
DATE:	4/5/01
CHECKED:	M. ARTIS
DATE:	4/5/01
SCALE	1=1
SIZE	E
REVISION	B1

UNLESS OTHERWISE SPECIFIED DIMENSIONS ARE IN INCHES	
Tolerances	Angles: ± .5°
Fractions	± 1/64
Decimals	.XX ± .01
	.XXX ± .005
Hole Dia.	± .002
* DO NOT SCALE DRAWING *	
FINISH:	

DEPARTMENT OF TRANSPORTATION	
NHTSA	
CONTRACT NO.: DTNH 22-94-C-07010	
DESIGNED BY: GESAC, INC.	
125 ORCHARD DRIVE BONNSBORO, MD 21773	

DRAWING TITLE:	
TESTING JACKET	
REAR PANEL ASSEMBLY (OUTSIDE VIEW)	
QUANTITY FOR AN ASSEMBLY	1
QUANTITY FOR ENTIRE DUMMY	1
DRAWING NUMBER:	T1JKF200
Page	1/1



NOTES:

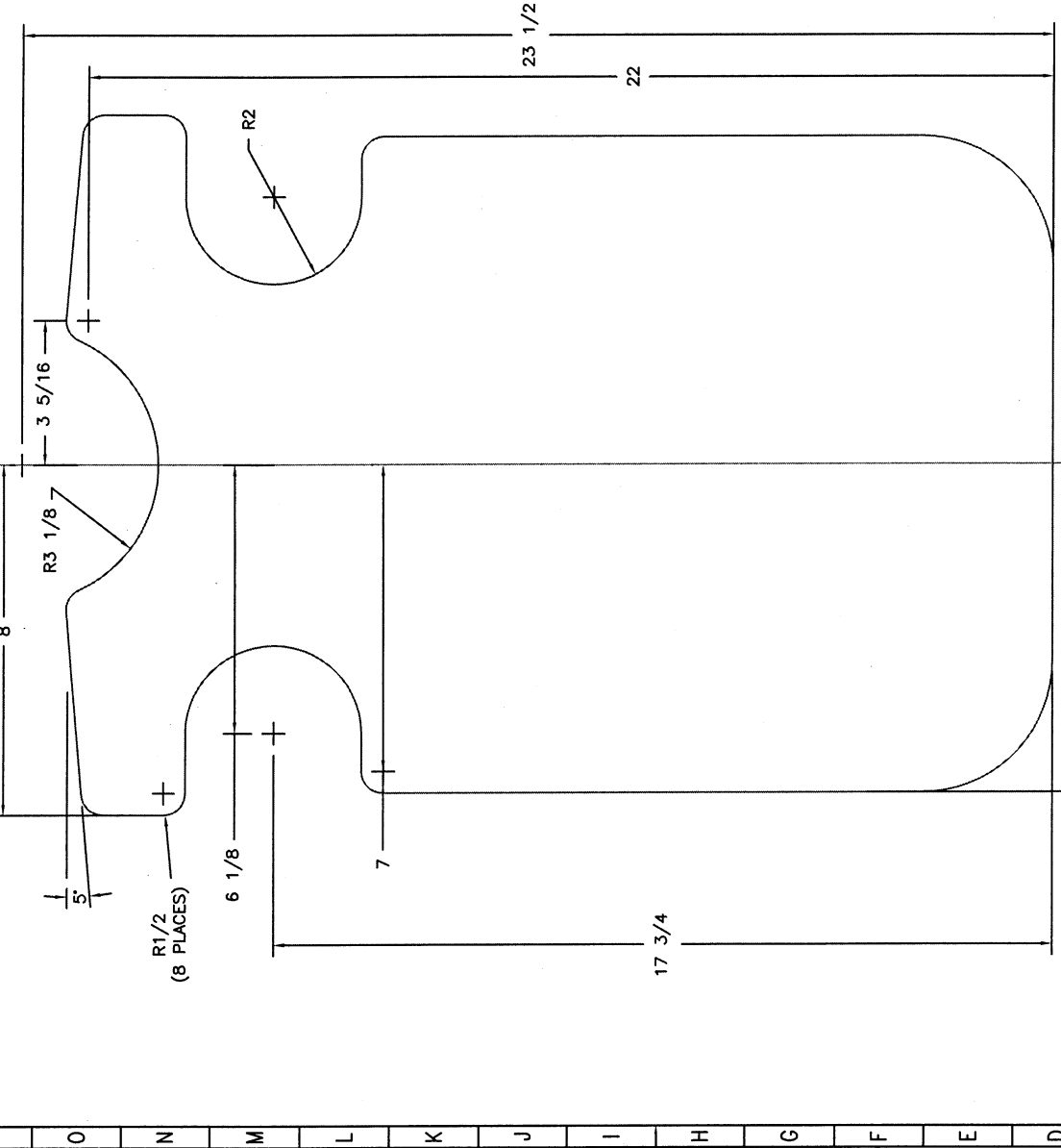
- △ JACKET PATTERN SHOWN WITH INSIDE FACING UP.
- △ ALL INTERIOR SEWING SHOULD BE DONE DIRECTLY ONTO NEOPRENE ONLY WITH BROWN/WINE SIDE DOWNWARDS.
- △ SEW ALL POCKETS IN PLACE ACCORDING TO SHOWN DIMENSIONS.
- △ HATCHED AREAS REPRESENT BLACK LOOP VELCRO THAT IS TO BE SEWN TO NEOPRENE AS WELL. (ALL VELCRO IS 5/8")
- △ ALIGN OUTSIDE CORDURA PIECE ON OPPOSITE SIDE AND SEW ALONG EDGE WITH RED BIAS TAPE. THE LAMINATED SIDE OF THE CORDURA IS FACING THE NEOPRENE.
- △ SOME PRESTRETCHING OF THE NEOPRENE IS REQUIRED TO HAVE THE EDGE MATCH WITH THE CORDURA FROM BELOW THIS LEVEL.
- △ FOAM IS INSERTED SUCH THAT THE RADIUS EDGES FACE THE OUTER SHELL OF THE JACKET

QTY	DWG/PART NUMBER	DESCRIPTION	MATERIAL
6	T1JKF215	MID-BACK FOAM	CHARCOAL FOAM
5	T1JKF214	UPPER BACK FOAM	CHARCOAL FOAM
4	T1JKF213	MID BACK FOAM POCKET	RED CORDURA
3	T1JKF212	UPPER BACK FOAM POCKET	RED CORDURA
2	T1JKF211	OUTSIDE REAR PANEL PATTERN	NEOPRENE
1	T1JKF210	INSIDE REAR PANEL PATTERN	NEOPRENE

UNLESS OTHERWISE SPECIFIED		ADDITIONAL HARDWARE NEEDED FOR ASSEMBLY	
DIMENSIONS ARE IN INCHES	ENGINEERED:	DATE:	DEPARTMENT OF TRANSPORTATION
Angles: ± .5°	M. ARTIS	2/10/01	NHTSA
Tolerances	DRAWN: K. BEAR	DATE: 4/5/01	CONTRACT NO.: DTNH 22-94-C-07010
Fractions ± 1/64	CHECKED: M. ARTIS	DATE: 4/5/01	DESIGNED BY: GESAC, INC.
Decimals: .xx ± .01	SCALE: 1"=1"	REVISION: B3	125 ORLANDO DRIVE BOWERSVILLE, MD 21713
DO NOT SCALE DRAWING	FINISH:	QUANTITY FOR AN ASSEMBLY: 1	DRAWING TITLE: TESTING JACKET REAR PANEL ASSEMBLY (INSIDE VIEW)
		QUANTITY FOR ENTIRE DUMMY: 1	DRAWING NUMBER: T1JKF201
			Page 1/1

22 21 20 19 18 17 16 15 14 13 12 11 10 9 8 7 6 5 4 3 2 1

REV. #	ZONE	REVISION	BY
B1	GLOBAL	DESCRIPTION CHANGED SHAPE	B. SBCK
		DATE	
		02/25/06	



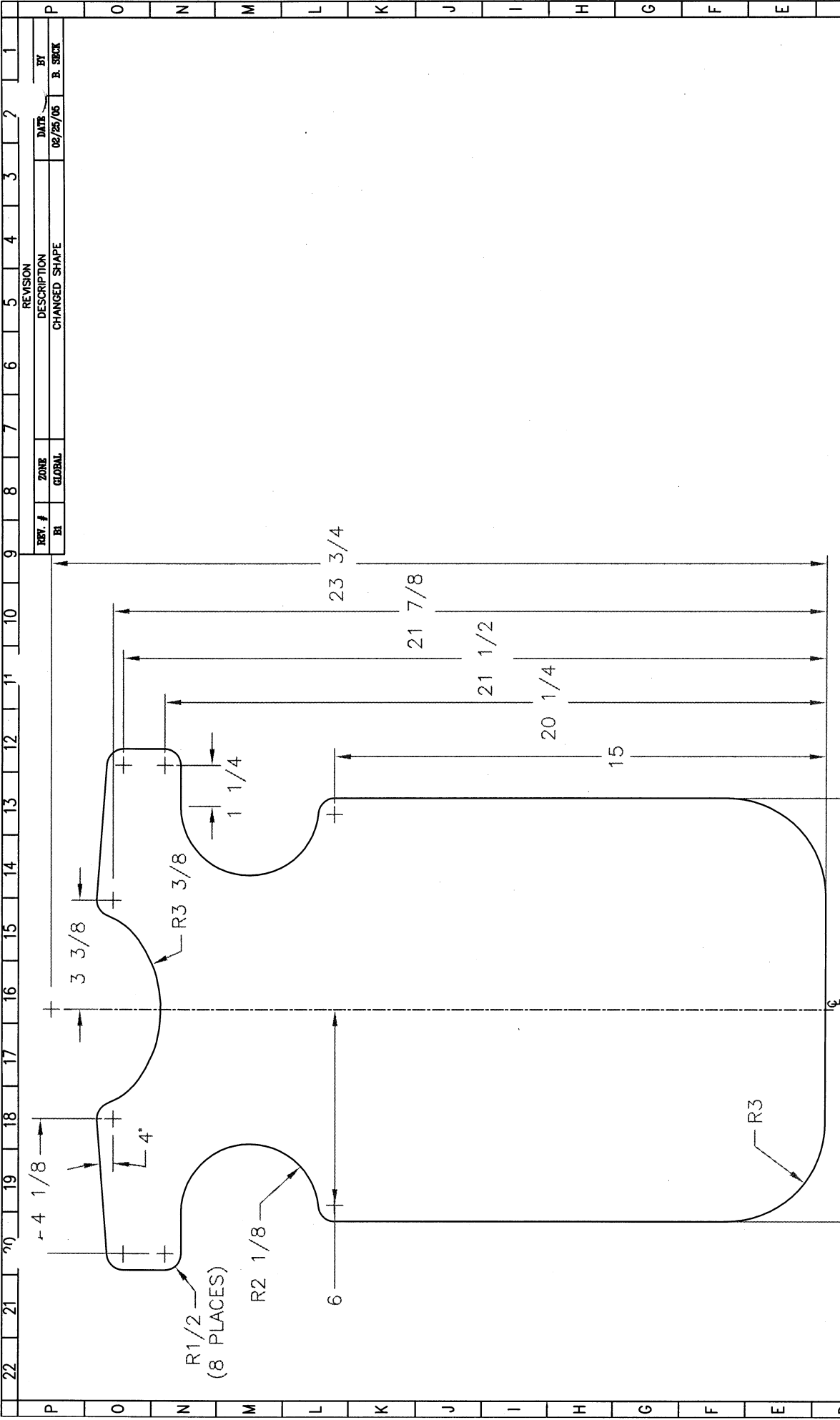
QTY	DWG/PART NUMBER	DESCRIPTION	MATERIAL
1		ADDITIONAL HARDWARE NEEDED FOR ASSEMBLY	
UNLESS OTHERWISE SPECIFIED		DATE	
DIMENSIONS ARE IN INCHES		2/10/01	
Tolerances		ENGINEERED:	
Angles: ± .5°		M. ARTIS	
Fractions ± 1/64		DRAWN:	
Decimals: .xx ± .01		K. BEAR	
Hole Dia. ± .002		CHECKED:	
* DO NOT SCALE DRAWING *		M. ARTIS	
FINISH:		SCALE	
		1=1	
		SIZE	
		E	
		REVISION	
		B1	
		QUANTITY FOR AN ASSEMBLY	
		1	
MATERIAL:		QUANTITY FOR ENTIRE DUMMY	
SEE NOTE 1		1	
		DRAWING NUMBER:	
		T1JKF210	
		Page	
		1/1	

NOTES:

△ THE MATERIAL IS NEOPRENE G-231-N 3/16" THICKNESS FROM RUBATEX CORP., WITH 2 SIDES OF NYLON (N-2-S); COLORS: 952(WINE) AND 902(RED)

△ CUT THIS PATTERN WITH THE RED COLORED SURFACE FACING UPWARDS.

△ MARK PART# T1JKF111 WITH PERMANENT MARKER ON THE WINE SIDE AT THE LOCATION SPECIFIED.

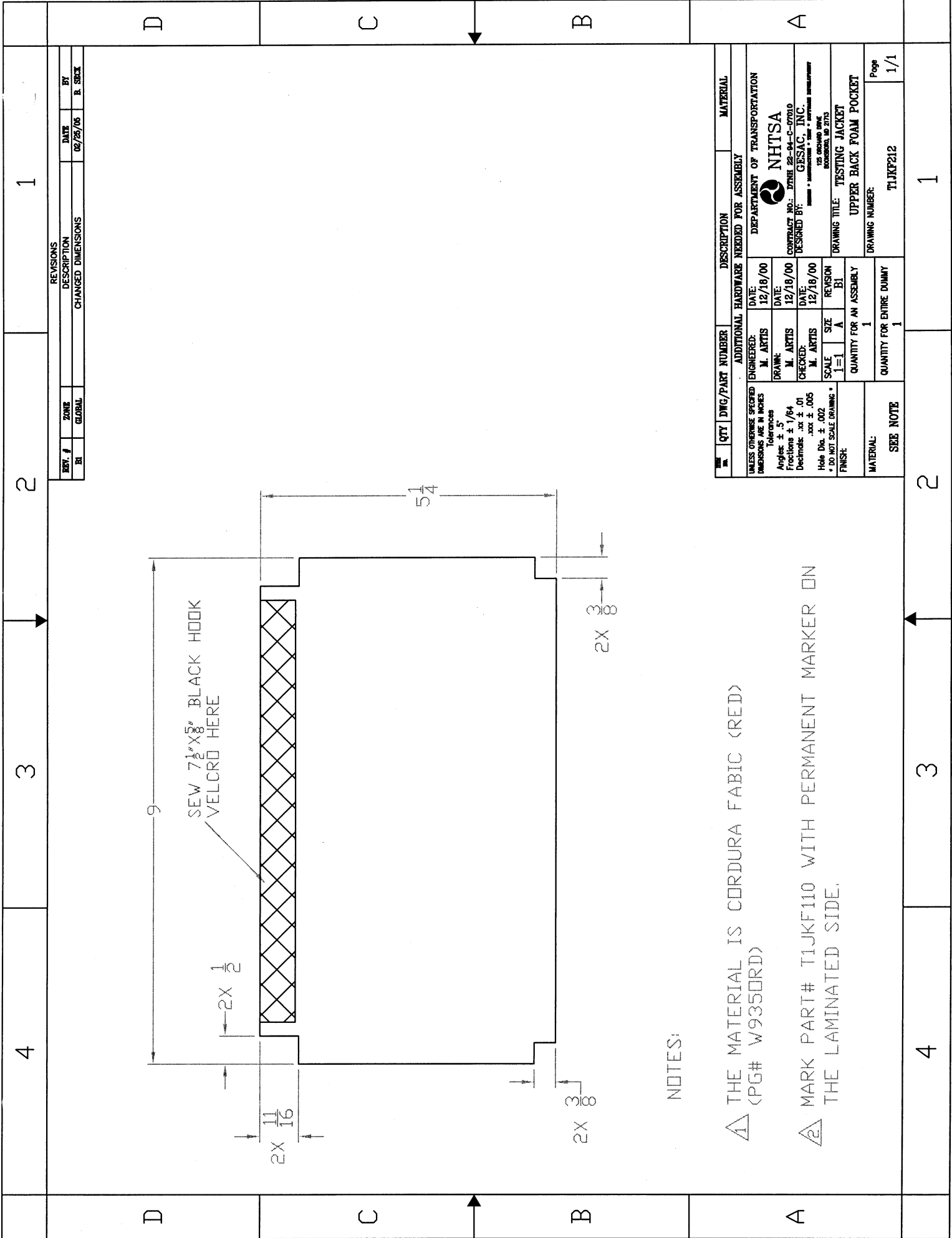


REV. #	ZONE	DESCRIPTION	DATE	BY
1	GLOBAL	CHANGED SHAPE	02/25/06	B. SECK

QTY	DWG/PART NUMBER	DESCRIPTION	MATERIAL
1		ADDITIONAL HARDWARE NEEDED FOR ASSEMBLY	
UNLESS OTHERWISE SPECIFIED DIMENSIONS ARE IN INCHES		ENGINEERED: M. ARTIS	DATE: 2/10/01
Tolerances		DRAWN: K. BEAIR	DATE: 4/5/01
Angles: ± .5°		CHECKED: M. ARTIS	DATE: 4/5/01
Fractions: ± 1/64		SCALE: 1=1	REVISION: B1
Decimals: .xx ± .01		QUANTITY FOR AN ASSEMBLY	1
.xxx ± .005		QUANTITY FOR ENTIRE DUMMY	1
Hole Dia. ± .002		MATERIAL:	SEE NOTE 1
* DO NOT SCALE DRAWING *		FINISH:	

REVISION	DATE	BY
1	02/25/06	B. SECK

<p>NOTES:</p> <p>△ THE MATERIAL IS NEOPRENE G-231-N 3/16" THICKNESS FROM RUBATEX CORP., WITH 2 SIDES OF NYLON (N-2-S); COLORS: 952(WINE) AND 902(RED)</p> <p>△ CUT THIS PATTERN WITH THE RED COLORED SURFACE FACING UPWARDS.</p> <p>△ MARK PART# T1JKF111 WITH PERMANENT MARKER ON THE WINE SIDE AT THE LOCATION SPECIFIED.</p>	<p>DEPARTMENT OF TRANSPORTATION</p> <p>NHTSA</p> <p>CONTRACT NO.: DTMB 22-94-C-07010</p> <p>DESIGNED BY: GESAC, INC.</p> <p>125 ORCHARD DRIVE ROCKFORD, IL 61173</p> <p>DRAWING TITLE: TESTING JACKET</p> <p>OUTSIDE REAR PANEL PATTERN</p> <p>DRAWING NUMBER: T1JKF111</p> <p>Page 1/1</p>
---	---



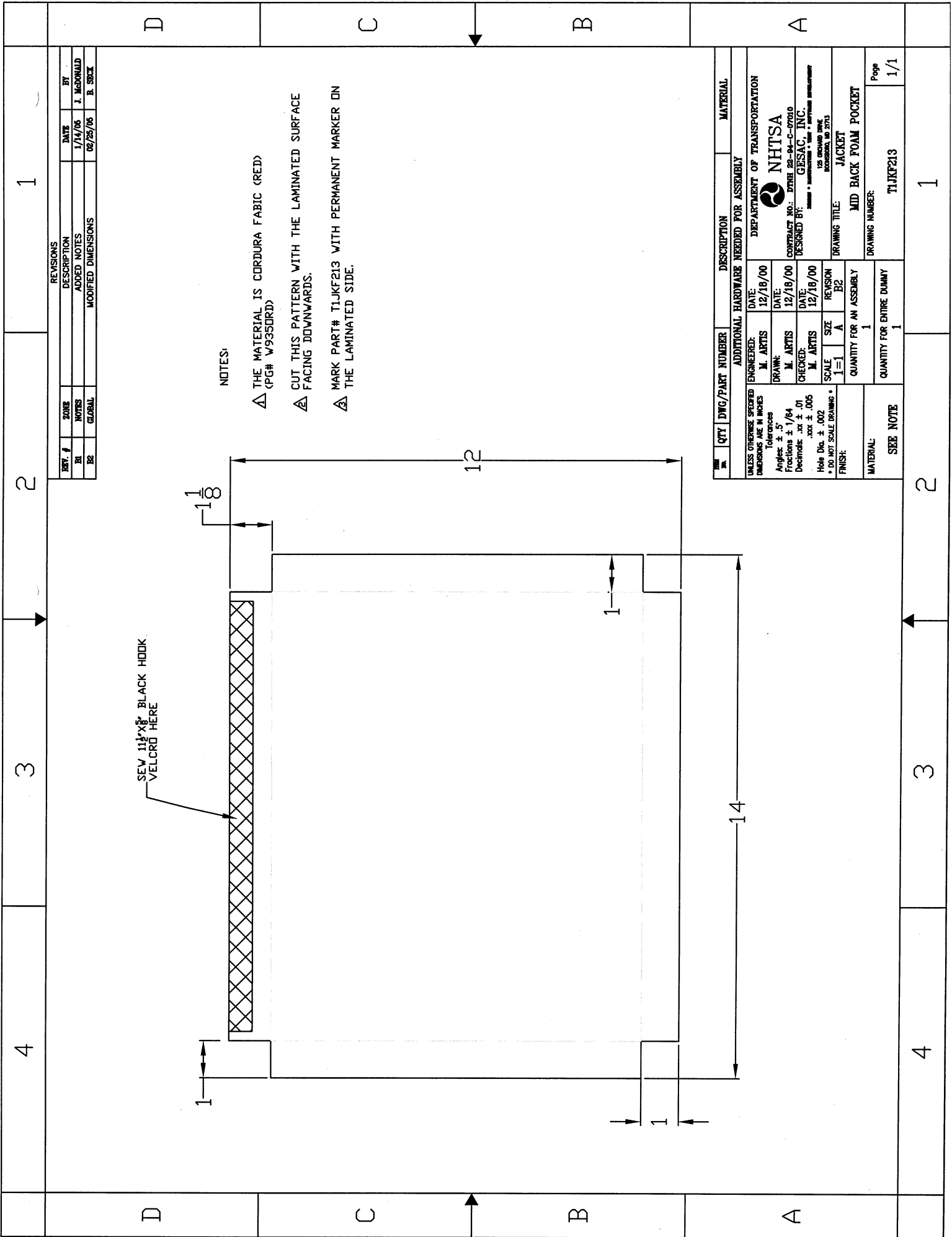
1 THE MATERIAL IS CORDURA FABIC (RED)
 (PG# W9350RD)
 2 MARK PART# T1JKF110 WITH PERMANENT MARKER ON
 THE LAMINATED SIDE.

NOTES:

REV. #	ZONE	DESCRIPTION	DATE	BY
01	GLOBAL	CHANGED DIMENSIONS	02/25/06	B. SEIXE

QTY	DWG/PART NUMBER	DESCRIPTION	MATERIAL
1		UPPER BACK FOAM POCKET	
1		TESTING JACKET	
1		QUANTITY FOR AN ASSEMBLY	
1		QUANTITY FOR ENTIRE DUMMY	
1		DRAWING NUMBER	T1JKF212
1/1		Page	1/1

UNLESS OTHERWISE SPECIFIED DIMENSIONS ARE IN INCHES	ENGINEERED:	DATE:	DEPARTMENT OF TRANSPORTATION
Tolerances	M. ARTIS	12/18/00	NHTSA
Angles ± .5°	M. ARTIS	12/18/00	CONTRACT NO.: DTMB 282-04-C-07010
Fractions ± 1/64	M. ARTIS	12/18/00	DESIGNED BY: GESAC, INC.
Decimals: .xx ± .01	M. ARTIS	12/18/00	DATE: 02/25/06
.xxx ± .005	M. ARTIS	12/18/00	REVISION
Hole Dia. ± .002	M. ARTIS	12/18/00	REASON
* DO NOT SCALE DRAWINGS *	M. ARTIS	12/18/00	REASON
FINISH:	M. ARTIS	12/18/00	REASON



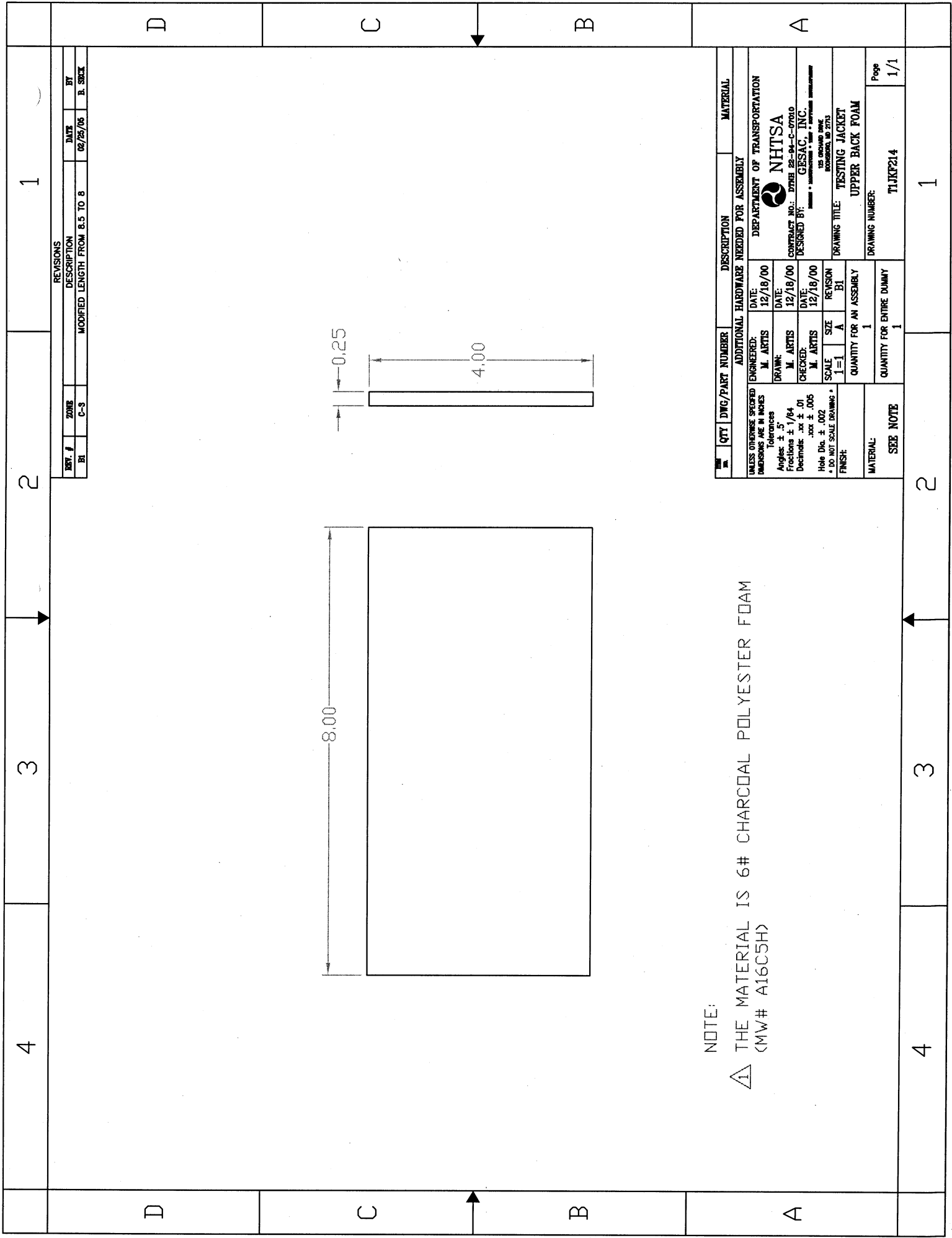
SEW 1 1/8" BLACK HOOK
VELCRO HERE

NOTES:

- △ THE MATERIAL IS CORDURA FABRIC (RED) (PG# W9950RD)
- △ CUT THIS PATTERN WITH THE LAMINATED SURFACE FACING DOWNWARDS.
- △ MARK PART# T1JKF213 WITH PERMANENT MARKER ON THE LAMINATED SIDE.

REV. #		ZONE	DESCRIPTION	DATE	BY
B1		NOTES	ADDED NOTES	1/14/06	J. McDONALD
B2		GLOBAL	MODIFIED DIMENSIONS	02/25/06	B. SECK

QTY	DWG./PART NUMBER	DESCRIPTION	MATERIAL																		
1	T1JKF213	MID BACK FOAM POCKET	JACKET																		
<table border="1"> <thead> <tr> <th colspan="2">UNLESS OTHERWISE SPECIFIED DIMENSIONS ARE IN INCHES</th> <th colspan="2">TOLERANCES</th> </tr> </thead> <tbody> <tr> <td>Angles</td> <td>± .5°</td> <td>Fractions</td> <td>± 1/64</td> </tr> <tr> <td>Decimals</td> <td>.xx ± .01</td> <td>.xxx ± .005</td> <td></td> </tr> <tr> <td>Hole Dia.</td> <td>± .002</td> <td colspan="2">* DO NOT SCALE DRAWING *</td> </tr> </tbody> </table>				UNLESS OTHERWISE SPECIFIED DIMENSIONS ARE IN INCHES		TOLERANCES		Angles	± .5°	Fractions	± 1/64	Decimals	.xx ± .01	.xxx ± .005		Hole Dia.	± .002	* DO NOT SCALE DRAWING *			
UNLESS OTHERWISE SPECIFIED DIMENSIONS ARE IN INCHES		TOLERANCES																			
Angles	± .5°	Fractions	± 1/64																		
Decimals	.xx ± .01	.xxx ± .005																			
Hole Dia.	± .002	* DO NOT SCALE DRAWING *																			
<table border="1"> <thead> <tr> <th>ENGINEERED:</th> <th>DATE:</th> <th>DEPARTMENT OF TRANSPORTATION</th> </tr> </thead> <tbody> <tr> <td>M. ARTIS</td> <td>12/16/00</td> <td>NHTSA</td> </tr> <tr> <td>DRAWN:</td> <td>DATE:</td> <td>CONTRACT NO.: DTN8 22-94-C-07010</td> </tr> <tr> <td>M. ARTIS</td> <td>12/16/00</td> <td>DESIGNED BY: GESAC, INC.</td> </tr> <tr> <td>CHECKED:</td> <td>DATE:</td> <td>125 BROADWAY</td> </tr> <tr> <td>M. ARTIS</td> <td>12/16/00</td> <td>ROCKFORD, IL 61103</td> </tr> </tbody> </table>				ENGINEERED:	DATE:	DEPARTMENT OF TRANSPORTATION	M. ARTIS	12/16/00	NHTSA	DRAWN:	DATE:	CONTRACT NO.: DTN8 22-94-C-07010	M. ARTIS	12/16/00	DESIGNED BY: GESAC, INC.	CHECKED:	DATE:	125 BROADWAY	M. ARTIS	12/16/00	ROCKFORD, IL 61103
ENGINEERED:	DATE:	DEPARTMENT OF TRANSPORTATION																			
M. ARTIS	12/16/00	NHTSA																			
DRAWN:	DATE:	CONTRACT NO.: DTN8 22-94-C-07010																			
M. ARTIS	12/16/00	DESIGNED BY: GESAC, INC.																			
CHECKED:	DATE:	125 BROADWAY																			
M. ARTIS	12/16/00	ROCKFORD, IL 61103																			
SCALE		SIZE	REVISION																		
1=1		A	B2																		
QUANTITY FOR AN ASSEMBLY		1																			
QUANTITY FOR ENTIRE DUMMY		1																			
MATERIAL:		SEE NOTE																			



NOTE:

△ THE MATERIAL IS 6# CHARCOAL POLYESTER FOAM (MW# A16C5H)

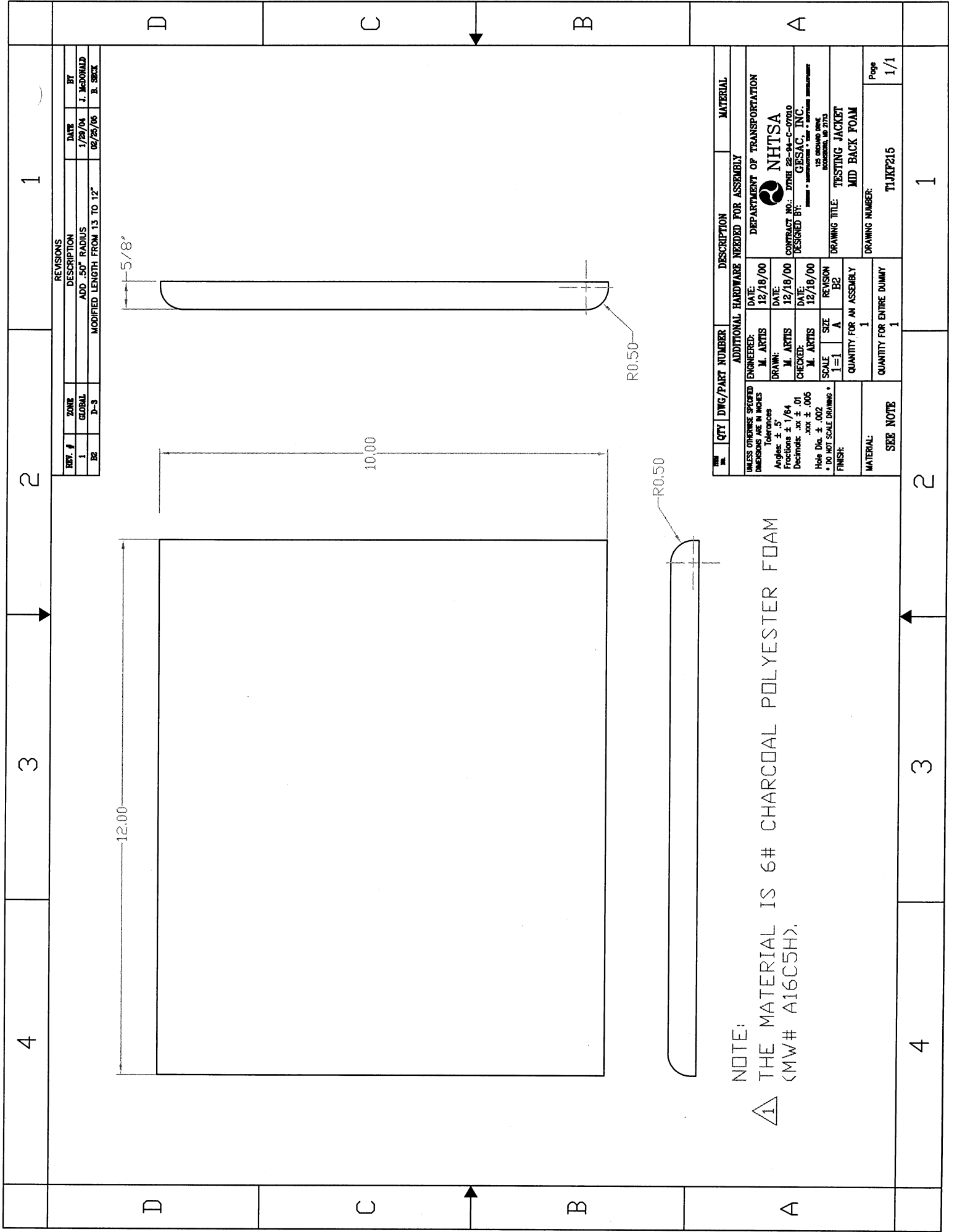
REVISIONS		
REV. #	ZONE	DATE
B1	C-3	02/25/05
DESCRIPTION		BY
MODIFIED LENGTH FROM B.5 TO B		B. SREX

QTY	DTG/PART NUMBER	DESCRIPTION	MATERIAL
1		ADDITIONAL HARDWARE NEEDED FOR ASSEMBLY	
UNLESS OTHERWISE SPECIFIED DIMENSIONS ARE IN INCHES		DEPARTMENT OF TRANSPORTATION	
Tolerances		NHTSA	
Angles: ± .5°	Drawn: M. ARTIS	DATE: 12/18/00	
Fractions: ± 1/64	Checked: M. ARTIS	DATE: 12/18/00	
Decimals: .xx ± .01	Scale: I=1	REVISION	
Hole Dia: ± .002	Size: A	BI	
* DO NOT SCALE DRAWING *	Finish:	Quantity for an assembly	
MATERIAL: SEE NOTE		Quantity for entire dummy	
		1	
		1	
		Drawing Number:	TIJKF214
		Page	1/1

CONTRACT NO.: DTRB 22-94-C-07010
 DESIGNED BY: GESAC, INC.
 125 GREENBUSH ST.
 WESTFIELD, MASS. 01095-1001

DRAWING TITLE: TESTING JACKET
 UPPER BACK FOAM

A B C D 1 2 3 4 1 2 3 4

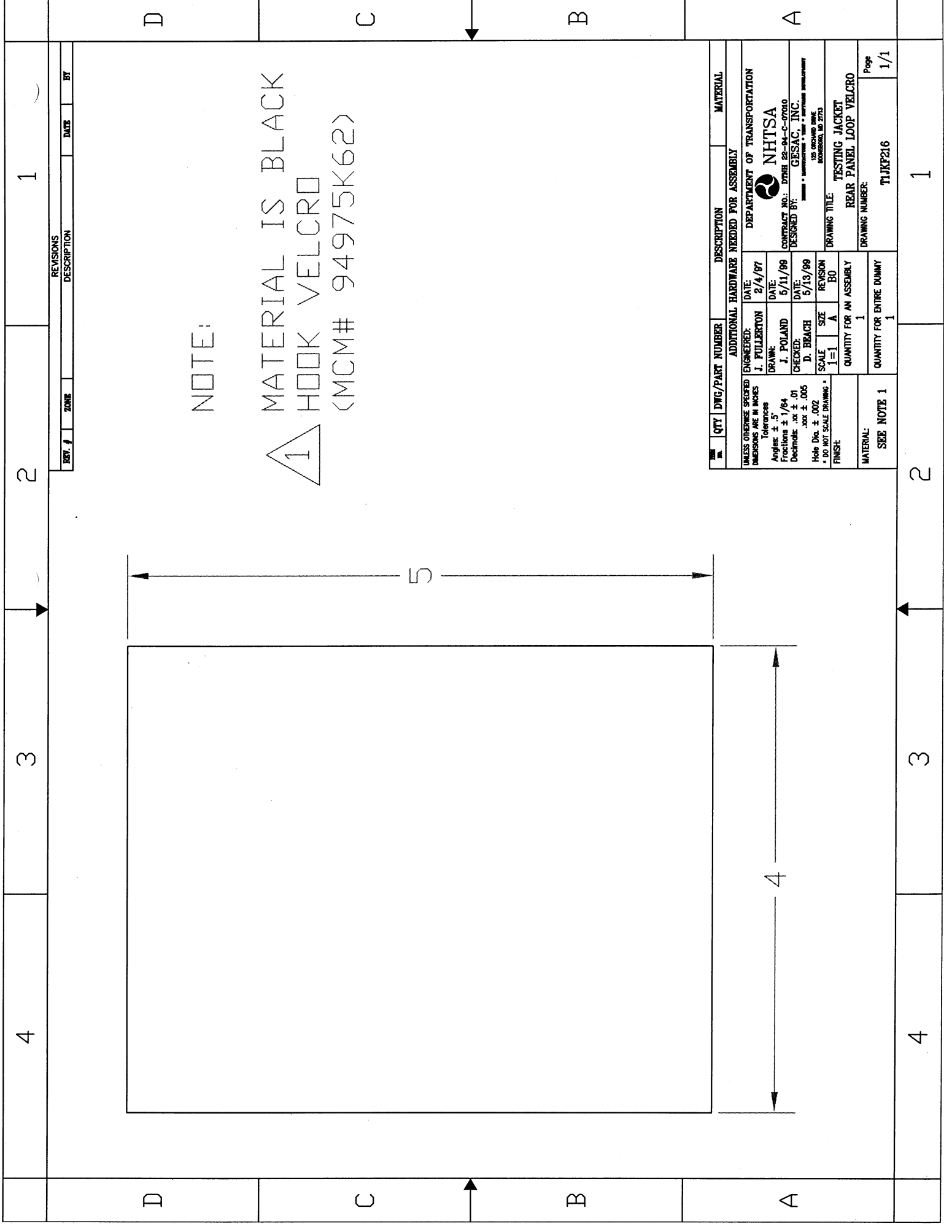


REVISIONS	
REV. #	DESCRIPTION
1	ADD .50" RADIUS
2	MODIFIED LENGTH FROM 13 TO 12"

ZONE	DATE	BY
GLOBAL	1/28/04	J. McDONALD
D-3	02/25/05	B. SBECK

QTY	DTG/PART NUMBER	DESCRIPTION	MATERIAL
UNLESS OTHERWISE SPECIFIED			
DIMENSIONS ARE IN INCHES			
Tolerances			
Angles: ± .5°			
Fractions: ± 1/64			
Decimals: .xx ± .01			
.xxx ± .005			
Hole Dia. ± .002			
* DO NOT SCALE DRAWING *			
FINISH:			
I=1 A B2			
SCALE			
1"=1" A B2			
REVISION			
1			
QUANTITY FOR AN ASSEMBLY			
1			
QUANTITY FOR ENTIRE DUMMY			
1			
DRAWING NUMBER: T1JKF215			
Page 1/1			

NOTE:
 THE MATERIAL IS 6# CHARCOAL POLYESTER FOAM
 (MW# A16C5H)



NOTE:

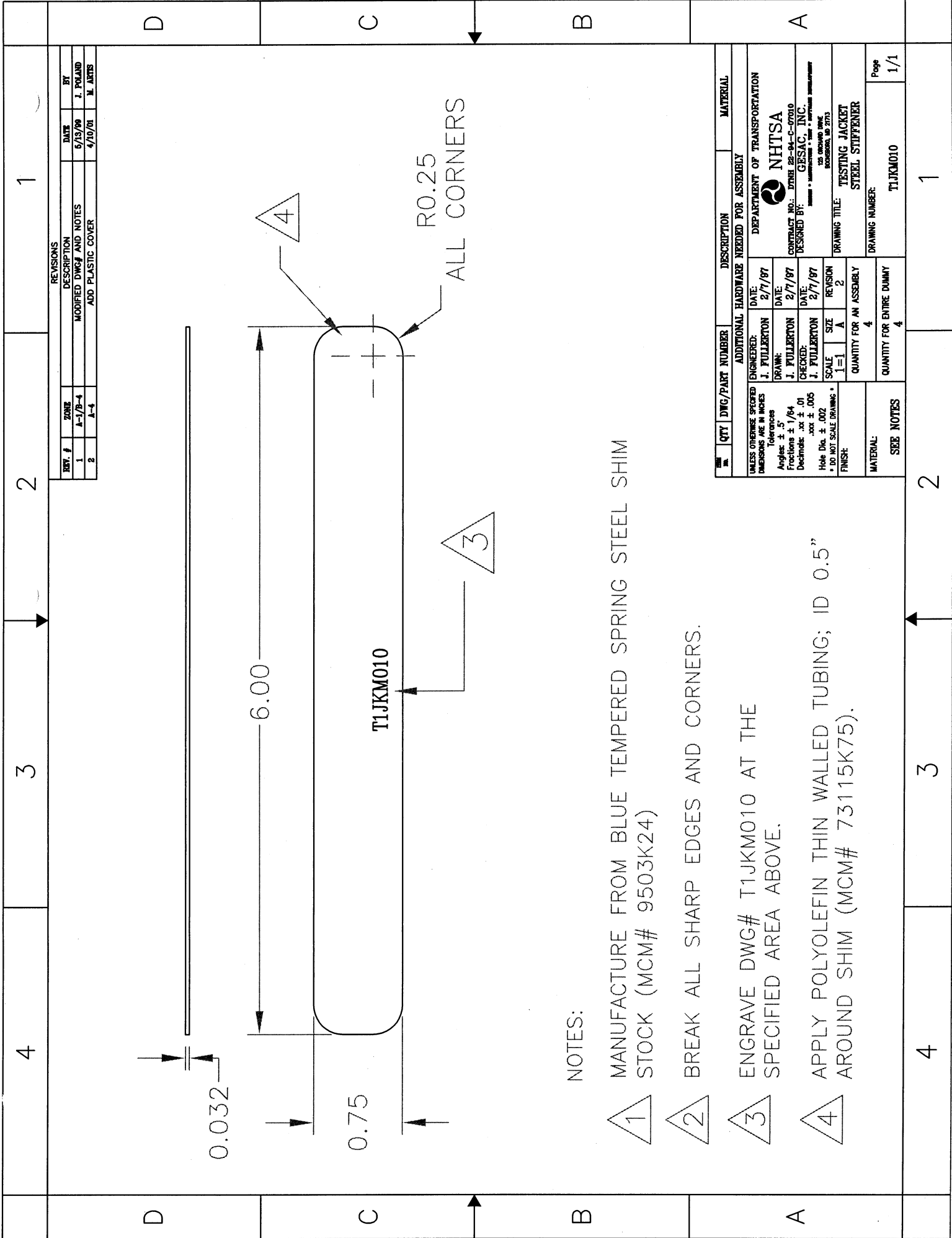
1 MATERIAL IS BLACK HOOK VELCRO (MCM# 94975K62)

REV. #	ZONE	DESCRIPTION	DATE	BY

QTY	DTG/PART NUMBER	DESCRIPTION	MATERIAL

UNLESS OTHERWISE SPECIFIED DIMENSIONS ARE IN INCHES Tolerances Angles: ± .5° Fractions: ± 1/64 Decimals: .xx ± .01 .xxx ± .005 Hole Dia. ± .002 * DO NOT SCALE DRAWING *	ENGINEERED: J. FULLERTON DATE: 2/4/87	DEPARTMENT OF TRANSPORTATION NHTSA CONTRACT NO.: DTRH 22-84-C-07010 DESIGNED BY: GESAC, INC. 125 DECHARD DRIVE ROCKFORD, IL 61153
FINISH:	DRAWN: J. POLAND DATE: 5/11/89	DRAWING TITLE: TESTING JACKET
	CHECKED: D. BEACH DATE: 5/13/89	REAR PANEL LOOP VELCRO
	SCALE: SIZE A 1=1	DRAWING NUMBER: T1JKP216
	QUANTITY FOR AN ASSEMBLY: 1	Page 1/1
	QUANTITY FOR ENTIRE DUMMY: 1	

MATERIAL:
SEE NOTE 1



REV. #		ZONE		DESCRIPTION		DATE		BY	
1		A-1/B-4		MODIFIED DWG# AND NOTES		5/13/99		J. POLAND	
2		A-4		ADD PLASTIC COVER		4/10/01		M. ARTIS	

QTY	DWG/PART NUMBER	DESCRIPTION	MATERIAL
4	T1JKM010	TESTING JACKET STEEL STIFFENER	T1JKM010
ADDITIONAL HARDWARE NEEDED FOR ASSEMBLY DEPARTMENT OF TRANSPORTATION NHTSA CONTRACT NO.: DTN9 22-94-C-07010 DESIGNED BY: GESAC, INC. <small>25 YEARS OF SERVICE</small> DRAWING TITLE: TESTING JACKET STEEL STIFFENER DRAWING NUMBER: T1JKM010 Page 1/1			

NOTES:

- 1 MANUFACTURE FROM BLUE TEMPERED SPRING STEEL SHIM STOCK (MCM# 9503K24)
- 2 BREAK ALL SHARP EDGES AND CORNERS.
- 3 ENGRAVE DWG# T1JKM010 AT THE SPECIFIED AREA ABOVE.
- 4 APPLY POLYOLEFIN THIN WALLED TUBING; ID 0.5" AROUND SHIM (MCM# 73115K75).

T1JKM010

6.00

0.032

0.75

R0.25
ALL CORNERS