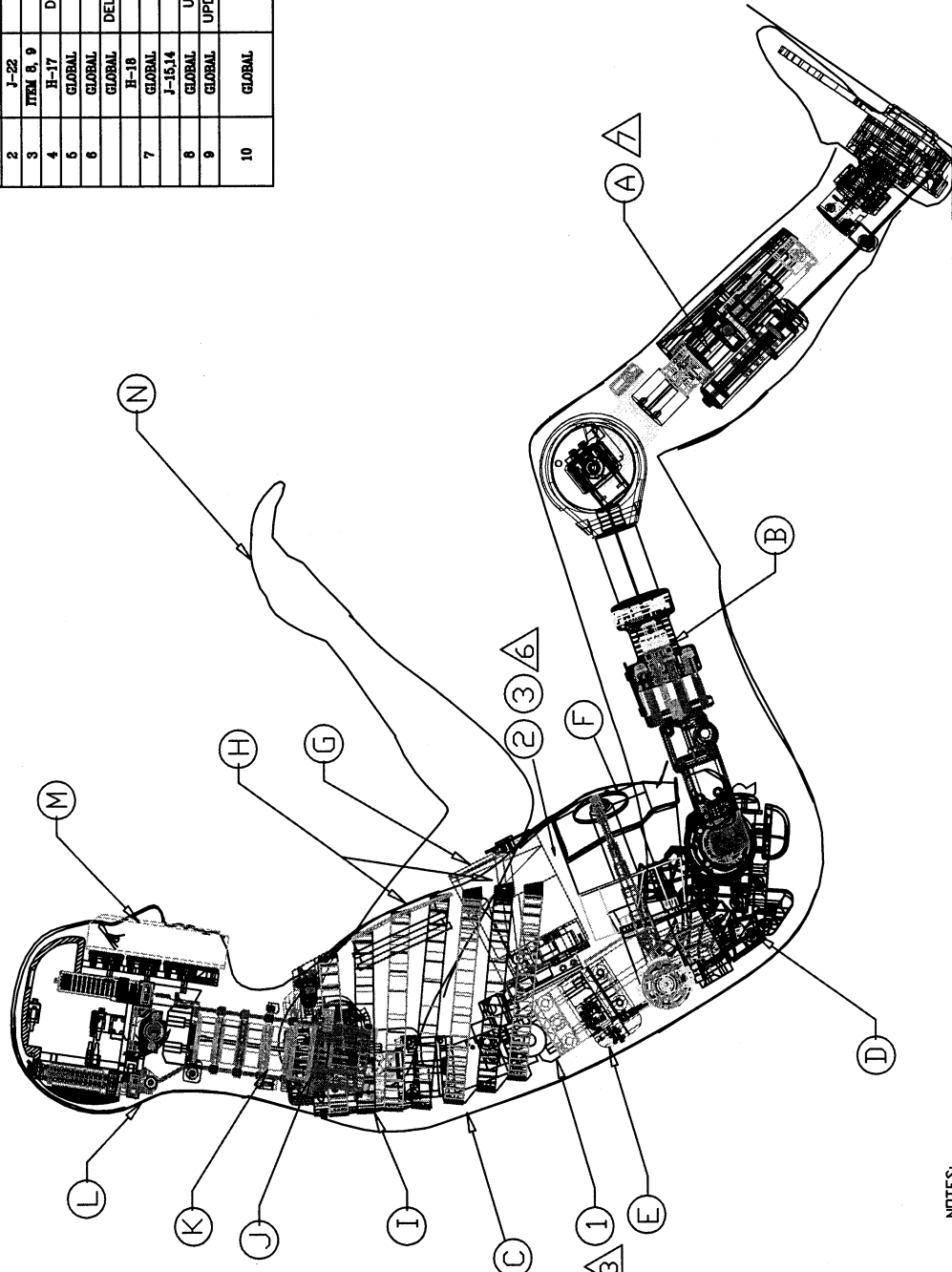




P	22	21	20	19	18	17	16	15	14	13	12	11	10	9	8	7	6	5	4	3	2	1	
O																							
N																							
M																							
L																							
K																							
J																							
I																							
H																							
G																							
F																							
E																							
D																							
C																							
B																							
A																							

REV. #	ZONE	DESCRIPTION	BY
1	H-16	PELVIS FEMUR JOINT IS NOW PART OF THE FEMUR	1/14/99 G. KELLY
2	I-22	ADDED THE TEST JACKET TO THE ASSEMBLY	1/14/99 G. KELLY
3	ITEM 8, 9	REMOVED EXTRA SHOULDER HARDWARE ITEMS	5/24/99 D. BEACHE
4	H-17	DELETED BOLT HOLE AT PELVIS BALL & SOCKET	7/15/99 J. POLAND
5	GLOBAL	ADDED THOR-LX	8/16/99 D. BEACHE
6	GLOBAL	UPDATED WITH THOR ALPHA REVISIONS	5/9/01 J. McDONALD
7	GLOBAL	DELETED TIFDM000 RS ITEMS C&I; RE-NUMBERED	5/9/01 M. ARTIS
8	GLOBAL	ADDED SERIAL NUMBER LOCATION	5/9/01 M. ARTIS
9	GLOBAL	UPDATED TO THOR ALPHA 1.1. MODS	10/15/01 M. ARTIS
10	J-15,14	ADDED CALLOUT 8, 9 & NOTE 7	10/15/01 M. ARTIS
11	GLOBAL	UPDATED HEAD ACCEL. ARRAY (TIFDM212R10)	11/7/01 M. ARTIS
12	GLOBAL	UPDATED MID STERNUM ASSEMBLY (TIFDM000R4)	11/28/01 M. ARTIS
13	GLOBAL	UPDATED WITH THOR NT REVISIONS	02/11/06 SKAMALAKKARAN
14	GLOBAL	DELETED REPETITIVE ITEMS 1 TO 6 AND NOTE 4; RE-NUMBERED	



- NOTES:
- △ THE AATD OUTLINE FOR THE 50% MALE IS PROVIDED FOR REFERENCE.
  - △ THE JACKET, BIB AND SKINS ARE NOT SHOWN IN THIS MECHANICAL DRAWING FOR CLARITY.
  - △ EACH DUMMY IS MARKED WITH A SIX DIGIT SERIAL NUMBER AS SHOWN.
  - △ THE ARM ASSEMBLIES AND KNEE ASSEMBLIES ARE PURCHASED AS HYBRID III PARTS (GM)
  - △ REFER TO THOR CERTIFICATION MANUAL REVISION FOR PERFORMANCE SPECIFICATIONS FOR THE FULL DUMMY ASSEMBLY.
  - △ USE EITHER THE NEUTRAL (TIFDM011) OR ERECT (TIFDM012) LOWER ABDOMEN FOAM WEDGE IN THE POCKET ATTACHED TO THE TOP OF THE LOWER ABDOMEN WHEN THE DUMMY IS EITHER IN THE NEUTRAL OR ERECT SPINAL POSTURE. NO WEDGE IS NEEDED FOR THE SLOUCH AND SUPER SLOUCH POSITIONS.
  - △ THE HYBRID III 50% MALE LOWER EXTREMITY CAN BE USED IN PLACE OF THE THOR-LX.

REV. #	QTY	TIFDM001	DWG/PART NUMBER	DESCRIPTION	PARTS LIST	MATERIAL
1						
UNLESS OTHERWISE SPECIFIED						
DIMENSIONS ARE IN INCHES						
Tolerances						
Angles: ± .5°						
Fractions: ± 1/64						
Decimals: .xx ± .01						
.xxx ± .005						
Hole Dia. ± .002						
* DO NOT SCALE DRAWING *						
FINISH:						
ENGINEERED: DATE: 7/18/97						
DRAWN: D. BEACHE						
CHECKED: M. ARTIS						
SCALE: NTS E 10						
REVISION: 10						
QUANTITY FOR AN ASSEMBLY: 1						
QUANTITY FOR ENTIRE DUMMY: 1						
MATERIAL: SEE SPECS.						
DRAWING NUMBER: TIFDM000						
Page: 1/1						

ADDITIONAL HARDWARE NEEDED FOR ASSEMBLY

DEPARTMENT OF TRANSPORTATION

NHTSA

CONTRACT NO.: DTRC 22-94-C-07010

DESIGNED BY: GESAC, INC.

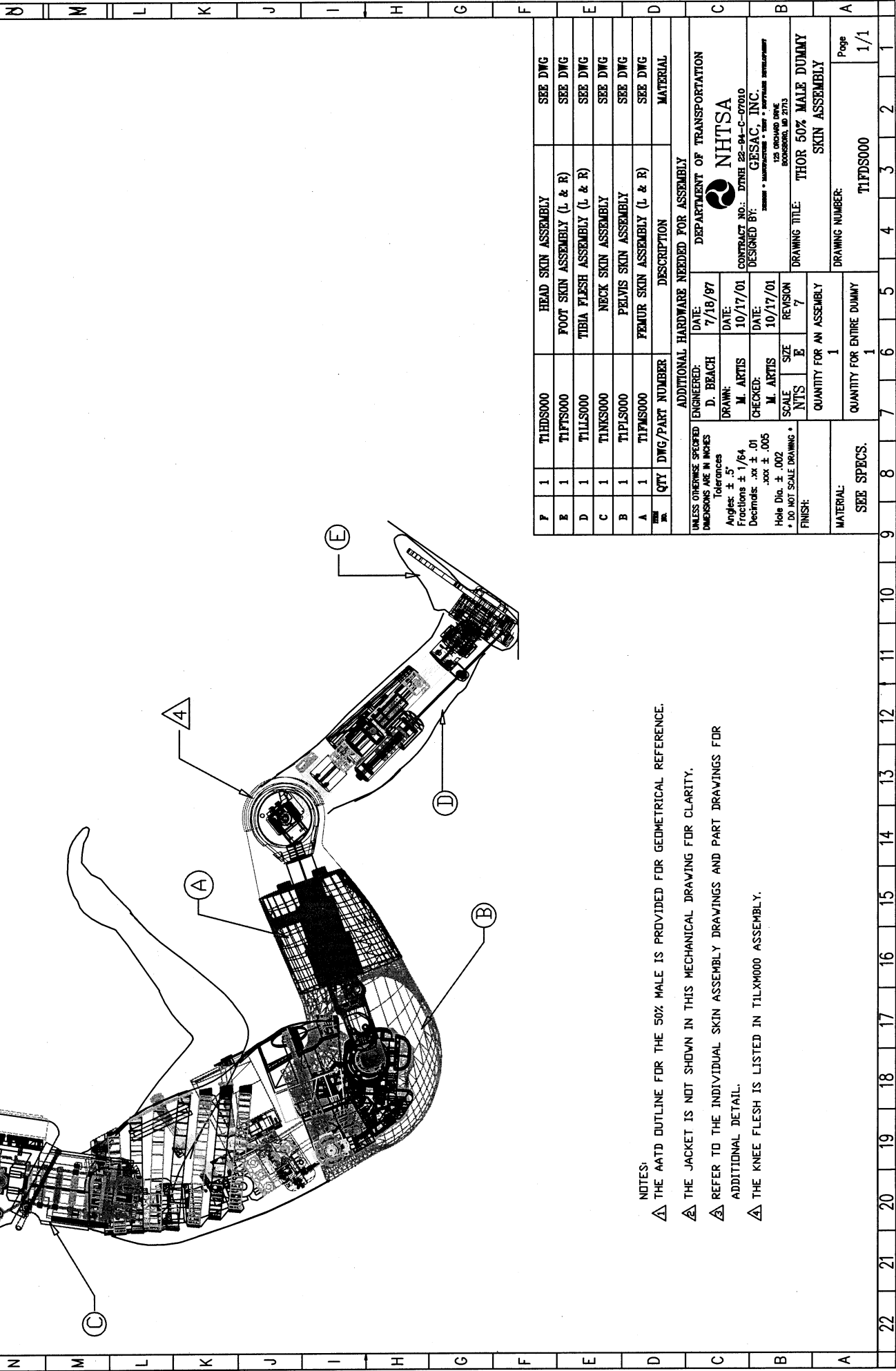
125 ORCHARD DRIVE

BOONSHOR, IA 2713

DRAWING TITLE: THOR 50% MALE DUMMY MECHANICAL ASSEMBLY



REV. #	ZONE	DESCRIPTION	DATE	BY
1	GLOBAL	CHANGED HARDWARE LIST PART NUMBERS	5/13/99	D. BRACE
2	GLOBAL	CIRCLED ITEM #	6/10/99	J. POLARD
3	H-17	CHANGED RETAINING RING BOLT PATTERN	7/15/99	J. POLARD
4	GLOBAL	UPDATED WITH THOR ALPHA REVISIONS	9/19/01	J. McDONALD
5	GLOBAL	UPDATED WITH THOR ALPHA 1.1 REVISIONS	10/17/01	M. ARTIS
6	GLOBAL	UPDATED MID STERNUM ASSEMBLY (TIMSM000R4)	11/28/01	M. ARTIS
7	GLOBAL	UPDATED WITH THOR NT REVISIONS	02/14/05	SKAMULAKARRAN
	GLOBAL	REPLACED HEAD SKIN AND HEAD CAP SKIN WITH HEAD SKIN ASSEMBLY	02/14/05	SKAMULAKARRAN



- NOTES:
- △ THE AA2D OUTLINE FOR THE 50% MALE IS PROVIDED FOR GEOMETRICAL REFERENCE.
  - △ THE JACKET IS NOT SHOWN IN THIS MECHANICAL DRAWING FOR CLARITY.
  - △ REFER TO THE INDIVIDUAL SKIN ASSEMBLY DRAWINGS AND PART DRAWINGS FOR ADDITIONAL DETAIL.
  - △ THE KNEE FLESH IS LISTED IN TILXW000 ASSEMBLY.

QTY	DWG/PART NUMBER	DESCRIPTION	MATERIAL
1	T1HDS000	HEAD SKIN ASSEMBLY	SEE DWG
1	T1FTS000	FOOT SKIN ASSEMBLY (L & R)	SEE DWG
1	T1TFS000	TIBIA FLESH ASSEMBLY (L & R)	SEE DWG
1	T1NKS000	NECK SKIN ASSEMBLY	SEE DWG
1	T1PLS000	PELVIS SKIN ASSEMBLY	SEE DWG
1	T1FMS000	FEMUR SKIN ASSEMBLY (L & R)	SEE DWG

ADDITIONAL HARDWARE NEEDED FOR ASSEMBLY	
ENGINEERED:	DATE: 7/18/97
D. BEACH	
DRAWN:	DATE: 10/17/01
M. ARTIS	
CHECKED:	DATE: 10/17/01
M. ARTIS	
SCALE	SIZE
N.T.S.	E
FINISH:	REVISION
	7

UNLESS OTHERWISE SPECIFIED	
DIMENSIONS ARE IN INCHES	
Tolerances	
Angles:	± .5°
Fractions:	± 1/64
Decimals:	.xx ± .01
	.xxx ± .005
Hole Dia.:	± .002
* DO NOT SCALE DRAWING *	

DEPARTMENT OF TRANSPORTATION	
NHTSA	
CONTRACT NO.: DTNH 22-94-C-07010	
DESIGNED BY: GESAC, INC.	
125 ORCHARD DRIVE	
BOONSHOWN, IN 47813	

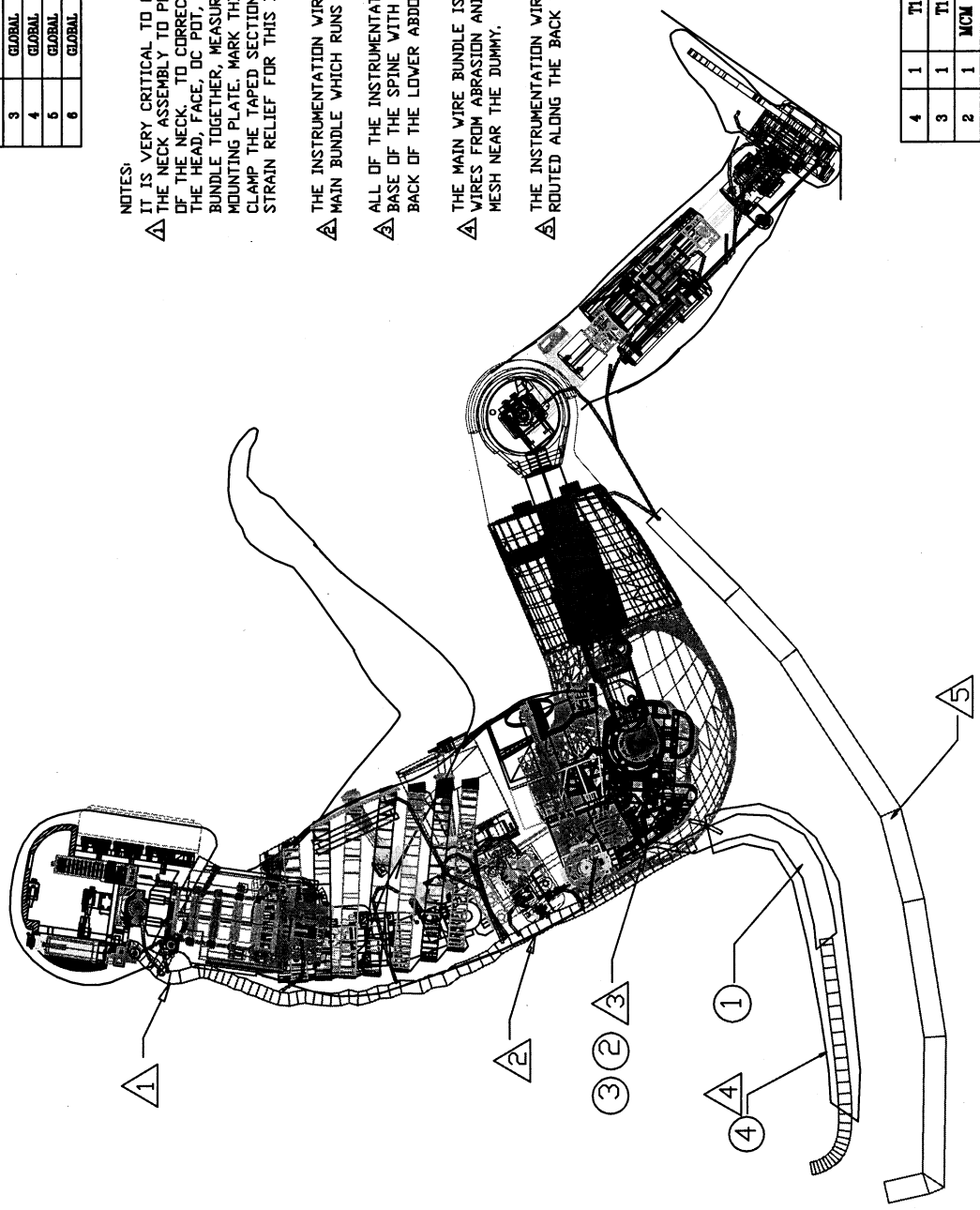
DRAWING TITLE:	
THOR 50% MALE DUMMY	
SKIN ASSEMBLY	
DRAWING NUMBER:	T1FDS000
QUANTITY FOR AN ASSEMBLY:	1
QUANTITY FOR ENTIRE DUMMY:	1
MATERIAL:	SEE SPECS.

22 21 20 19 18 17 16 15 14 13 12 11 10 9 8 7 6 5 4 3 2 1

REV. #	ZONE	DESCRIPTION	BY
1	H-17	CHANGED RETAINING RING BOLT PATTERN	7/18/98 J. POLAND
2	GLOBAL	UPDATED WITH THOR ALPHA REVISIONS	5/8/01 J. McDONALD
3	GLOBAL	UPDATED WITH THOR ALPHA 1.1 REVISIONS	10/17/01 M. ARTIS
4	GLOBAL	UPDATED HEAD ACC. ARRAY (T1HDM2T2R10)	11/7/01 M. ARTIS
6	GLOBAL	UPDATED MID STERNUM ASSEMBLY (T1MSMO00R4)	11/28/01 M. ARTIS
6	GLOBAL	UPDATED WITH THOR NT REVISIONS	9/28/05 J. McDONALD

**NOTES:**

- △ IT IS VERY CRITICAL TO PROVIDE THE CORRECT AMOUNT OF SLACK IN THE WIRES ABOVE THE NECK ASSEMBLY TO PREVENT DAMAGE TO THE INSTRUMENTS DURING THE MOVEMENT OF THE NECK. TO CORRECTLY MEASURE THIS SLACK, COLLECT ALL OF THE WIRES FROM THE HEAD, FACE, DC POT, AND UPPER NECK LOAD CELL INTO A SINGLE BUNDLE. HOLDING THE BUNDLE TOGETHER, MEASURE 13.5" DOWN ALONG THE WIRES FROM THE BOTTOM OF THE HEAD MOUNTING PLATE. MARK THIS LOCATION AND WRAP IT WITH RUBBERIZED ELECTRICAL TAPE. CLAMP THE TAPED SECTION SECURELY UNDER THE WIRE CLAMP ABOVE RIB #1 TO PROVIDE STRAIN RELIEF FOR THIS BUNDLE.
- △ THE INSTRUMENTATION WIRES FROM HEAD, NECK, THORAX, AND PELVIS ARE ROUTED TO THE MAIN BUNDLE WHICH RUNS ALONG THE BACK OF THE SPINE.
- △ ALL OF THE INSTRUMENTATION WIRES FROM THE MAIN BUNDLE ARE SECURED AT THE BASE OF THE SPINE WITH A STEEL MESH WIRE CLAMP. THE CLAMP IS ATTACHED TO THE BACK OF THE LOWER ABDOMEN REAR PLATE (TILAM010) WITH A 5/16-18 BOLT.
- △ THE MAIN WIRE BUNDLE IS COVERED WITH A NYLON WIRE COVER TO PROTECT THE WIRES FROM ABRASION AND SHARP EDGES. THIS COVER IS ATTACHED TO THE WIRE MESH NEAR THE DUMMY.
- △ THE INSTRUMENTATION WIRES FROM THE FEMUR AND THE LOWER EXTREMITIES ARE ROUTED ALONG THE BACK OF THE LEG INTO A SECONDARY WIRE BUNDLE.



QTY	DWG/PART NUMBER	DESCRIPTION	MATERIAL
1	T1NF000	NYLON WIRE COVER	NYLON
3	T1NF010	STRAIN RELIEF MOUNTING PLATE	6061-T6
2	MCM # 91253A583	5/16-18 x 1" F.H.S.G.S. (ALLOY)	PURCHASED
1	MCM # 7615K45	STRAIN RELIEF MESH GRP (1.25-1.60")	PURCHASED

**ADDITIONAL HARDWARE NEEDED FOR ASSEMBLY**

UNLESS OTHERWISE SPECIFIED DIMENSIONS ARE IN INCHES

ENGINEERED: D. BEACH DATE: 7/18/97  
 TOLERANCES: Angles: ± .5°  
 Fractions: ± 1/64  
 Decimals: .xx ± .01  
 .xxx ± .005  
 Hole Dia. ± .002  
 \* DO NOT SCALE DRAWING \*

FINISH: 1=2 E 6

SCALE: 1=2 E 6

DESIGNED BY: GESAC, INC.  
 124 ORCHARD DRIVE  
 ROCKFORD, IL 61153

CONTRACT NO.: DPNB 28-94-C-07010

DEPARTMENT OF TRANSPORTATION  
**NHTSA**

DRAWING TITLE: THOR 50% MALE DUMMY ELECTRICAL ASSEMBLY

DRAWING NUMBER: T1FD8000

QUANTITY FOR AN ASSEMBLY: 1

QUANTITY FOR ENTIRE DUMMY: 1

MATERIAL: SEE SPECS.

Page 1/1

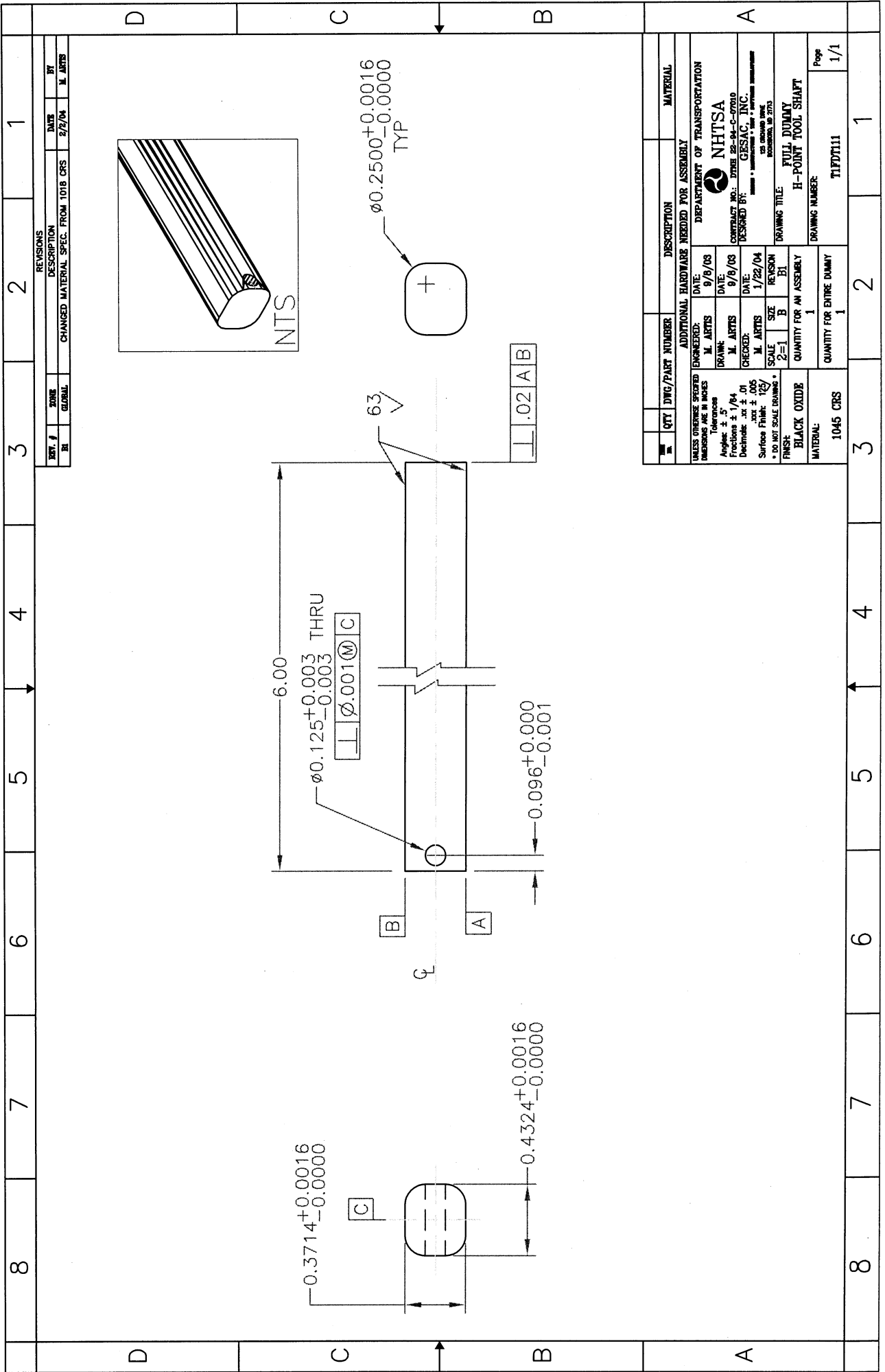
10	9	8	7	6	5	4	3	2	1																																																																																																												
H	G	F	E	D	C	B	A																																																																																																														
<table border="1"> <thead> <tr> <th>REV. #</th> <th>ZONE</th> <th>DESCRIPTION</th> <th>DATE</th> <th>BY</th> </tr> </thead> <tbody> <tr> <td>1</td> <td>GLOBAL</td> <td>CHANGED LOCATION FROM T1SPM20 TO T1SPM00</td> <td>5/13/99</td> <td>D. BEACH</td> </tr> <tr> <td>2</td> <td>GLOBAL</td> <td>UPDATED DRAWING FOR NEW DECAL &amp; SERIAL #</td> <td>6/10/99</td> <td>J. POLAND</td> </tr> <tr> <td>3</td> <td>GLOBAL</td> <td>CHANGED LOCATION FROM T1SPM521 TO T1SPM521</td> <td>02/11/05</td> <td>SKANMIAKARUN</td> </tr> </tbody> </table>										REV. #	ZONE	DESCRIPTION	DATE	BY	1	GLOBAL	CHANGED LOCATION FROM T1SPM20 TO T1SPM00	5/13/99	D. BEACH	2	GLOBAL	UPDATED DRAWING FOR NEW DECAL & SERIAL #	6/10/99	J. POLAND	3	GLOBAL	CHANGED LOCATION FROM T1SPM521 TO T1SPM521	02/11/05	SKANMIAKARUN																																																																																								
REV. #	ZONE	DESCRIPTION	DATE	BY																																																																																																																	
1	GLOBAL	CHANGED LOCATION FROM T1SPM20 TO T1SPM00	5/13/99	D. BEACH																																																																																																																	
2	GLOBAL	UPDATED DRAWING FOR NEW DECAL & SERIAL #	6/10/99	J. POLAND																																																																																																																	
3	GLOBAL	CHANGED LOCATION FROM T1SPM521 TO T1SPM521	02/11/05	SKANMIAKARUN																																																																																																																	
<p>NOTES:</p> <p>△ A PRESTAMPED METALLIC DECAL IS TO BE AFFIXED TO EACH THOR DUMMY ON THE BACK SIDE OF THE LUMBAR SPINE PITCH CHANGE BOTTOM PLATE IN THE RECESSED AREA AS SHOWN. THIS PLATE WILL BE MARKED WITH A SPECIFIC 6 DIGIT SERIAL NUMBER AT THE TIME OF FINAL ASSEMBLY. AN EXPLANATION OF THIS 6 DIGIT CODE IS PROVIDED BELOW.</p> <p>T1*****</p> <p>T1 = TWO DIGIT CODE FOR DUMMY (T1 - THOR 50% MALE)</p> <p>**** = A FOUR DIGIT SERIAL NUMBER UNIQUE TO EACH DUMMY</p>																																																																																																																					
<table border="1"> <thead> <tr> <th>QTY</th> <th>DWG/PART NUMBER</th> <th>DESCRIPTION</th> <th>MATERIAL</th> </tr> </thead> <tbody> <tr> <td colspan="4">ADDITIONAL HARDWARE NEEDED FOR ASSEMBLY</td> </tr> <tr> <td colspan="4">UNLESS OTHERWISE SPECIFIED DIMENSIONS ARE IN INCHES</td> </tr> <tr> <td colspan="4">Tolerances</td> </tr> <tr> <td colspan="4">Angles: ± .5°</td> </tr> <tr> <td colspan="4">Fractions: ± 1/64</td> </tr> <tr> <td colspan="4">Decimals: .xx ± .01</td> </tr> <tr> <td colspan="4">.xxx ± .005</td> </tr> <tr> <td colspan="4">Hole Dia. ± .002</td> </tr> <tr> <td colspan="4">* DO NOT SCALE DRAWING *</td> </tr> <tr> <td colspan="4">FINISH:</td> </tr> <tr> <td colspan="4">SCALE: 1=1 C</td> </tr> <tr> <td colspan="4">SIZE: C</td> </tr> <tr> <td colspan="4">REVISION: 3</td> </tr> <tr> <td colspan="4">DATE: 6/7/97</td> </tr> <tr> <td colspan="4">DRAWN: D. BEACH</td> </tr> <tr> <td colspan="4">CHECKED: D. BEACH</td> </tr> <tr> <td colspan="4">DESIGNED BY: GRSAC, INC.</td> </tr> <tr> <td colspan="4">CONTRACT NO.: DTMB 22-94-C-07010</td> </tr> <tr> <td colspan="4">NHTSA DEPARTMENT OF TRANSPORTATION</td> </tr> <tr> <td colspan="4">DRAWING TITLE: THOR 50% MALE DUMMY</td> </tr> <tr> <td colspan="4">SERIAL NUMBER LOCATION</td> </tr> <tr> <td colspan="4">DRAWING NUMBER: T1PDM010</td> </tr> <tr> <td colspan="4">QUANTITY FOR AN ASSEMBLY: 1</td> </tr> <tr> <td colspan="4">QUANTITY FOR ENTIRE DUMMY: 1</td> </tr> <tr> <td colspan="4">MATERIAL: SEE SPECS.</td> </tr> <tr> <td colspan="4">Page 1/1</td> </tr> </tbody> </table>										QTY	DWG/PART NUMBER	DESCRIPTION	MATERIAL	ADDITIONAL HARDWARE NEEDED FOR ASSEMBLY				UNLESS OTHERWISE SPECIFIED DIMENSIONS ARE IN INCHES				Tolerances				Angles: ± .5°				Fractions: ± 1/64				Decimals: .xx ± .01				.xxx ± .005				Hole Dia. ± .002				* DO NOT SCALE DRAWING *				FINISH:				SCALE: 1=1 C				SIZE: C				REVISION: 3				DATE: 6/7/97				DRAWN: D. BEACH				CHECKED: D. BEACH				DESIGNED BY: GRSAC, INC.				CONTRACT NO.: DTMB 22-94-C-07010				NHTSA DEPARTMENT OF TRANSPORTATION				DRAWING TITLE: THOR 50% MALE DUMMY				SERIAL NUMBER LOCATION				DRAWING NUMBER: T1PDM010				QUANTITY FOR AN ASSEMBLY: 1				QUANTITY FOR ENTIRE DUMMY: 1				MATERIAL: SEE SPECS.				Page 1/1			
QTY	DWG/PART NUMBER	DESCRIPTION	MATERIAL																																																																																																																		
ADDITIONAL HARDWARE NEEDED FOR ASSEMBLY																																																																																																																					
UNLESS OTHERWISE SPECIFIED DIMENSIONS ARE IN INCHES																																																																																																																					
Tolerances																																																																																																																					
Angles: ± .5°																																																																																																																					
Fractions: ± 1/64																																																																																																																					
Decimals: .xx ± .01																																																																																																																					
.xxx ± .005																																																																																																																					
Hole Dia. ± .002																																																																																																																					
* DO NOT SCALE DRAWING *																																																																																																																					
FINISH:																																																																																																																					
SCALE: 1=1 C																																																																																																																					
SIZE: C																																																																																																																					
REVISION: 3																																																																																																																					
DATE: 6/7/97																																																																																																																					
DRAWN: D. BEACH																																																																																																																					
CHECKED: D. BEACH																																																																																																																					
DESIGNED BY: GRSAC, INC.																																																																																																																					
CONTRACT NO.: DTMB 22-94-C-07010																																																																																																																					
NHTSA DEPARTMENT OF TRANSPORTATION																																																																																																																					
DRAWING TITLE: THOR 50% MALE DUMMY																																																																																																																					
SERIAL NUMBER LOCATION																																																																																																																					
DRAWING NUMBER: T1PDM010																																																																																																																					
QUANTITY FOR AN ASSEMBLY: 1																																																																																																																					
QUANTITY FOR ENTIRE DUMMY: 1																																																																																																																					
MATERIAL: SEE SPECS.																																																																																																																					
Page 1/1																																																																																																																					

16	15	14	13	12	11	10	9	8	7	6	5	4	3	2	1
<p>ERECT T1FDM012</p>															
<p>NOTES:</p> <p>△ THE MATERIAL IS FOAMEX BRAND 6 LBS. CHARCOAL ESTER FOAM REFERENCE MW# A16H67</p> <p>△ MARK THE DWG # T1FDM011 AND THE WORD 'ERECT' AT THE LOCATION SHOWN.</p>															
<p>UNLESS OTHERWISE SPECIFIED DIMENSIONS ARE IN INCHES</p> <p>Angles: ± .5°</p> <p>Fractions: 1/64</p> <p>Decimals: .01</p> <p>Hole Dia. ± .002</p> <p>± .00 NOT SCALE DRAWING</p> <p>FINISH:</p>															
<p>QTY DWG/PART NUMBER DESCRIPTION MATERIAL</p> <p>1 1 T1FDM011 LOWER ABDOMEN ERECT POSTURE FOAM</p>															
<p>ADDITIONAL HARDWARE NEEDED FOR ASSEMBLY</p> <p>DATE: 9/20/08</p> <p>ENGINEERED BY: J. FULLERTON</p> <p>DESIGNED BY: NHTSA</p> <p>DEPARTMENT OF TRANSPORTATION</p> <p>CONTRACT NO.: DTMB 98-04-C-07010</p> <p>DESIGNED BY: GESAC, INC.</p> <p>125 SOUTH 9TH AVE</p> <p>ROCKFORD, IL 61103</p>															
<p>REVISION</p> <p>REV. # DATE BY</p>															
<p>DESCRIPTION</p>															





8	7	6	5	4	3	2	1																																																								
<table border="1"> <tr> <th colspan="4">REVISIONS</th> </tr> <tr> <th>REV #</th> <th>ZONE</th> <th>DESCRIPTION</th> <th>DATE</th> <th>BY</th> </tr> <tr> <td>3</td> <td>GLOBAL</td> <td>UPDATED THE ASSEMBLY TO THE "NJT" LEVEL.</td> <td>6/2/04</td> <td>M. ARTS</td> </tr> <tr> <td>4</td> <td>GLOBAL</td> <td>UPDATED ASSEMBLY WITH T1FD7112-CO</td> <td>9/10/04</td> <td>J. BARNFIELD</td> </tr> </table>								REVISIONS				REV #	ZONE	DESCRIPTION	DATE	BY	3	GLOBAL	UPDATED THE ASSEMBLY TO THE "NJT" LEVEL.	6/2/04	M. ARTS	4	GLOBAL	UPDATED ASSEMBLY WITH T1FD7112-CO	9/10/04	J. BARNFIELD																																					
REVISIONS																																																															
REV #	ZONE	DESCRIPTION	DATE	BY																																																											
3	GLOBAL	UPDATED THE ASSEMBLY TO THE "NJT" LEVEL.	6/2/04	M. ARTS																																																											
4	GLOBAL	UPDATED ASSEMBLY WITH T1FD7112-CO	9/10/04	J. BARNFIELD																																																											
<div style="display: flex; justify-content: space-between;"> <div style="width: 45%;"> <p style="text-align: center;">FRONT OBLIQUE-VIEW</p> </div> <div style="width: 45%;"> <p style="text-align: center;">REAR OBLIQUE-VIEW</p> </div> </div>																																																															
<table border="1"> <thead> <tr> <th>QTY</th> <th>DRG/PART NUMBER</th> <th>DESCRIPTION</th> <th>MATERIAL</th> </tr> </thead> <tbody> <tr> <td>9</td> <td>1</td> <td>MCN #8740A216</td> <td>1/8 X .76L SPRING PIN (420 SS)</td> <td>PURCHASE</td> </tr> <tr> <td>8</td> <td>1</td> <td>MCN #80146A653</td> <td>1/4 X 3.0L DOWEL PIN</td> <td>PURCHASE</td> </tr> <tr> <td>7</td> <td>1</td> <td>MCN #86380A508</td> <td>3/16 X 3/4L DOWEL PIN</td> <td>PURCHASE</td> </tr> <tr> <td>6</td> <td>1</td> <td>MCN #81255A189</td> <td>#8-32 X 3/16" BHCS (ALLOY STEEL)</td> <td>PURCHASE</td> </tr> <tr> <td>5</td> <td>1</td> <td>MCN #86630A238</td> <td>#8 TEFLON WASHER</td> <td>PURCHASE</td> </tr> <tr> <td>4</td> <td>1</td> <td>T1FD7113</td> <td>H-PT TOOL BEARING</td> <td>ALUM/PTFLON</td> </tr> <tr> <td>3</td> <td>1</td> <td>T1FD7114</td> <td>H-PT TOOL PLATE</td> <td>6061 AL</td> </tr> <tr> <td>2</td> <td>1</td> <td>T1FD7112</td> <td>H-PT TOOL INTERFACE DISK</td> <td>1018 CRS</td> </tr> <tr> <td>1</td> <td>1</td> <td>T1FD7111</td> <td>H-PT TOOL SHAFT</td> <td>1045 CRS</td> </tr> </tbody> </table>								QTY	DRG/PART NUMBER	DESCRIPTION	MATERIAL	9	1	MCN #8740A216	1/8 X .76L SPRING PIN (420 SS)	PURCHASE	8	1	MCN #80146A653	1/4 X 3.0L DOWEL PIN	PURCHASE	7	1	MCN #86380A508	3/16 X 3/4L DOWEL PIN	PURCHASE	6	1	MCN #81255A189	#8-32 X 3/16" BHCS (ALLOY STEEL)	PURCHASE	5	1	MCN #86630A238	#8 TEFLON WASHER	PURCHASE	4	1	T1FD7113	H-PT TOOL BEARING	ALUM/PTFLON	3	1	T1FD7114	H-PT TOOL PLATE	6061 AL	2	1	T1FD7112	H-PT TOOL INTERFACE DISK	1018 CRS	1	1	T1FD7111	H-PT TOOL SHAFT	1045 CRS							
QTY	DRG/PART NUMBER	DESCRIPTION	MATERIAL																																																												
9	1	MCN #8740A216	1/8 X .76L SPRING PIN (420 SS)	PURCHASE																																																											
8	1	MCN #80146A653	1/4 X 3.0L DOWEL PIN	PURCHASE																																																											
7	1	MCN #86380A508	3/16 X 3/4L DOWEL PIN	PURCHASE																																																											
6	1	MCN #81255A189	#8-32 X 3/16" BHCS (ALLOY STEEL)	PURCHASE																																																											
5	1	MCN #86630A238	#8 TEFLON WASHER	PURCHASE																																																											
4	1	T1FD7113	H-PT TOOL BEARING	ALUM/PTFLON																																																											
3	1	T1FD7114	H-PT TOOL PLATE	6061 AL																																																											
2	1	T1FD7112	H-PT TOOL INTERFACE DISK	1018 CRS																																																											
1	1	T1FD7111	H-PT TOOL SHAFT	1045 CRS																																																											
<p>NOTES:</p> <p>1 PRESS THE H-PT TOOL BEARING (ITEM 5) INTO THE H-PT PLATE (ITEM 4). THE FLANGED PORTION OF THE BEARING IS FACING THE H-PT TOOL INTERFACE DISK (ITEM 2) WHEN INSTALLED PROPERLY.</p> <p>2 ORIENT THE H-PT PLATE AS SHOWN DURING ASSEMBLY.</p>																																																															
<table border="1"> <thead> <tr> <th colspan="4">ADDITIONAL HARDWARE NEEDED FOR ASSEMBLY</th> </tr> <tr> <th>ENGINEERED:</th> <th>DATE:</th> <th colspan="2">DEPARTMENT OF TRANSPORTATION</th> </tr> </thead> <tbody> <tr> <td>M. ARTS</td> <td>1/21/04</td> <td colspan="2">NHTSA</td> </tr> <tr> <td>DRAWN:</td> <td>DATE:</td> <td colspan="2">CONTRACT NO.: DTMB 88-04-C-07040</td> </tr> <tr> <td>M. ARTS</td> <td>1/21/04</td> <td colspan="2">DESIGNED BY: GRSAC, INC.</td> </tr> <tr> <td>CHECKED:</td> <td>DATE:</td> <td colspan="2">15 DAY/ONE YEAR WARRANTY PERIOD, 30 DAYS</td> </tr> <tr> <td>STAFF</td> <td>6/2/04</td> <td colspan="2">DRAWING TITLE: FULL DUMMY</td> </tr> <tr> <td>SCALE</td> <td>SIZE</td> <td colspan="2">H-POINT TOOL - MECHANICAL ASSEMBLY</td> </tr> <tr> <td>N/T S</td> <td>B</td> <td colspan="2">DRAWING NUMBER: T1FD7110</td> </tr> <tr> <td colspan="2">QUANTITY FOR AN ASSEMBLY</td> <td colspan="2">Page</td> </tr> <tr> <td colspan="2">1</td> <td colspan="2">1/1</td> </tr> <tr> <td colspan="2">QUANTITY FOR ENTIRE DUMMY</td> <td colspan="2">1</td> </tr> <tr> <td colspan="2">1</td> <td colspan="2">1</td> </tr> <tr> <td colspan="2">MATERIAL:</td> <td colspan="2">-</td> </tr> </tbody> </table>								ADDITIONAL HARDWARE NEEDED FOR ASSEMBLY				ENGINEERED:	DATE:	DEPARTMENT OF TRANSPORTATION		M. ARTS	1/21/04	NHTSA		DRAWN:	DATE:	CONTRACT NO.: DTMB 88-04-C-07040		M. ARTS	1/21/04	DESIGNED BY: GRSAC, INC.		CHECKED:	DATE:	15 DAY/ONE YEAR WARRANTY PERIOD, 30 DAYS		STAFF	6/2/04	DRAWING TITLE: FULL DUMMY		SCALE	SIZE	H-POINT TOOL - MECHANICAL ASSEMBLY		N/T S	B	DRAWING NUMBER: T1FD7110		QUANTITY FOR AN ASSEMBLY		Page		1		1/1		QUANTITY FOR ENTIRE DUMMY		1		1		1		MATERIAL:		-	
ADDITIONAL HARDWARE NEEDED FOR ASSEMBLY																																																															
ENGINEERED:	DATE:	DEPARTMENT OF TRANSPORTATION																																																													
M. ARTS	1/21/04	NHTSA																																																													
DRAWN:	DATE:	CONTRACT NO.: DTMB 88-04-C-07040																																																													
M. ARTS	1/21/04	DESIGNED BY: GRSAC, INC.																																																													
CHECKED:	DATE:	15 DAY/ONE YEAR WARRANTY PERIOD, 30 DAYS																																																													
STAFF	6/2/04	DRAWING TITLE: FULL DUMMY																																																													
SCALE	SIZE	H-POINT TOOL - MECHANICAL ASSEMBLY																																																													
N/T S	B	DRAWING NUMBER: T1FD7110																																																													
QUANTITY FOR AN ASSEMBLY		Page																																																													
1		1/1																																																													
QUANTITY FOR ENTIRE DUMMY		1																																																													
1		1																																																													
MATERIAL:		-																																																													
8	7	6	5	4	3	2	1																																																								



REV #		DATE	BY
1	2	8/2/04	M. ARTS

REV #	ZONE	DESCRIPTION
1	GLOBAL	CHANGED MATERIAL SPEC. FROM 1018 CRS

REV #	DATE	BY
1	8/2/04	M. ARTS

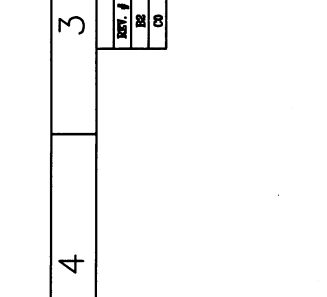

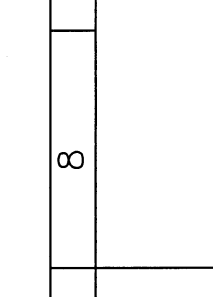
QTY	DWG/PART NUMBER	DESCRIPTION	MATERIAL
1	1045 CRS <td>BLACK OXIDE <td>1045 CRS</td> </td>	BLACK OXIDE <td>1045 CRS</td>	1045 CRS
1	1	QUANTITY FOR AN ASSEMBLY	
1	1	QUANTITY FOR ENTIRE DUMMY	
1	1	DRAWING NUMBER	T1PDT111
1	1	PAGE	1/1

ENGINEERED	DATE	DEPARTMENT
M. ARTS	9/8/03	DEPARTMENT OF TRANSPORTATION

DRAWN	DATE	CONTRACT NO.
M. ARTS	9/8/03	DTMB 22-94-C-07010

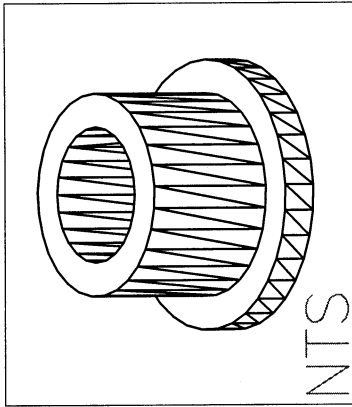
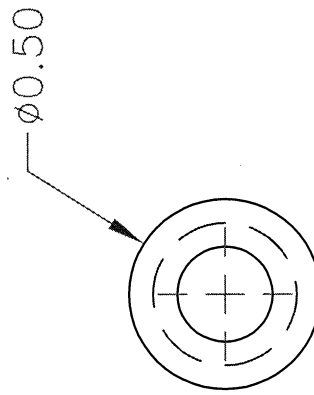
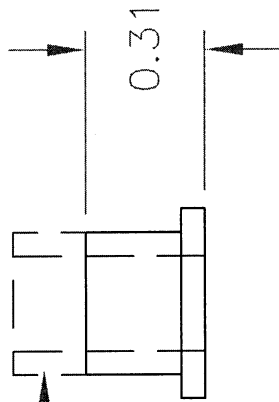
CHECKED	DATE	DESIGNED BY
M. ARTS	1/22/04	GIESAC, INC

SCALE	SIZE	REVISION	DRAWING TITLE
2=1	B	BI	FULL DUMMY H-POINT TOOL SHAFT

8	7	6	5	4	3	2	1																																
<table border="1"> <tr> <th>REV #</th> <th>DATE</th> <th>BY</th> </tr> <tr> <td>01</td> <td>01/04</td> <td>M. ARTS</td> </tr> <tr> <td>02</td> <td>07/04</td> <td>M. ARTS</td> </tr> <tr> <td>03</td> <td>09/10/04</td> <td>J. BARNARD</td> </tr> </table>								REV #	DATE	BY	01	01/04	M. ARTS	02	07/04	M. ARTS	03	09/10/04	J. BARNARD																				
REV #	DATE	BY																																					
01	01/04	M. ARTS																																					
02	07/04	M. ARTS																																					
03	09/10/04	J. BARNARD																																					
<p>REVISIONS</p> <p>DESCRIPTION</p> <p>THE DIA. 1.885 HOLE WAS REPOSITIONED</p> <p>ADDED .250 DIA. SHAFT AND #8-32 TAPPED HOLE</p>																																							
																																							
<p>2X</p> <p><math>\phi 0.1885^{+0.0005}_{-0.0000}</math> THRU</p> <p><math>\phi \varnothing.001 \text{ (M) A}</math></p> <p>82° C'SINK</p> <p><math>\phi .22</math> TO <math>.25</math></p> <p>0.021</p> <p>0.353</p> <p>0.250</p> <p>0.250</p> <p>NO RADIUS PERMITTED</p> <p>0.550</p> <p>0.25</p> <p>0.200<math>^{+0.001}_{-0.000}</math></p> <p>0.125<math>^{+0.003}_{-0.003}</math> THRU</p> <p><math>\varnothing 0.125^{+0.001}_{-0.000}</math></p> <p>0.103<math>^{+0.001}_{-0.000}</math></p> <p><math>\varnothing \varnothing.001 \text{ (M) A}</math></p>																																							
<p>NOTES:</p> <p>1 ENGRAVE THE LETTER "R" AT THE LOCATION SHOWN.</p> <p>2 ENGRAVE THE LETTER "L" AT THE LOCATION SHOWN.</p>																																							
 <p>DETAIL A:</p> <p>0.3750<math>^{+0.0000}_{-0.0028}</math></p> <p>0.03 X .03 CHAM</p> <p>0.4360<math>^{+0.0028}_{-0.0000}</math></p> <p>R0.1250<math>^{+0.0028}_{-0.0000}</math> TYP.</p>																																							
<p>REFER TO DETAIL A</p> <p><math>\phi 1.00</math></p>																																							
<table border="1"> <tr> <th>QTY</th> <th>DWG/PART NUMBER</th> <th>DESCRIPTION</th> <th>MATERIAL</th> </tr> <tr> <td>1</td> <td></td> <td>ADDITIONAL HARDWARE NEEDED FOR ASSEMBLY</td> <td></td> </tr> <tr> <td>1</td> <td></td> <td>QUANTITY FOR AN ASSEMBLY</td> <td></td> </tr> <tr> <td>1</td> <td></td> <td>QUANTITY FOR ENTIRE DUMMY</td> <td></td> </tr> </table>								QTY	DWG/PART NUMBER	DESCRIPTION	MATERIAL	1		ADDITIONAL HARDWARE NEEDED FOR ASSEMBLY		1		QUANTITY FOR AN ASSEMBLY		1		QUANTITY FOR ENTIRE DUMMY																	
QTY	DWG/PART NUMBER	DESCRIPTION	MATERIAL																																				
1		ADDITIONAL HARDWARE NEEDED FOR ASSEMBLY																																					
1		QUANTITY FOR AN ASSEMBLY																																					
1		QUANTITY FOR ENTIRE DUMMY																																					
<table border="1"> <tr> <td>UNLESS OTHERWISE SPECIFIED DIMENSIONS ARE IN INCHES</td> <td>ENGINEERED: M. ARTS</td> <td>DATE: 1/22/04</td> <td>DEPARTMENT OF TRANSPORTATION</td> </tr> <tr> <td>Angles: ± 1/4</td> <td>DRAWN: M. ARTS</td> <td>DATE: 1/22/04</td> <td>NHTSA</td> </tr> <tr> <td>Fractions: ± 1/8</td> <td>CHECKED: STAFF</td> <td>DATE: 6/7/04</td> <td>CONTRACT NO.: DTMB 22-04-C-07010</td> </tr> <tr> <td>Decimals: ± .01</td> <td>SCALE: 1=1</td> <td>REVISION: C</td> <td>DESIGNED BY: GRESAC, INC.</td> </tr> <tr> <td>Surface Finish: 125</td> <td>DO NOT SCALE DRAWING</td> <td></td> <td>125 DIMENSIONS UNLESS OTHERWISE INDICATED</td> </tr> <tr> <td>FINISH: BLACK OXIDE</td> <td></td> <td></td> <td>DRAWING TITLE: FULL DUMMY H-POINT TOOL INTERFACE DISK</td> </tr> <tr> <td>MATERIAL: 1018 CRS</td> <td></td> <td></td> <td>DRAWING NUMBER: 11FD7112</td> </tr> <tr> <td></td> <td></td> <td></td> <td>Page: 1/1</td> </tr> </table>								UNLESS OTHERWISE SPECIFIED DIMENSIONS ARE IN INCHES	ENGINEERED: M. ARTS	DATE: 1/22/04	DEPARTMENT OF TRANSPORTATION	Angles: ± 1/4	DRAWN: M. ARTS	DATE: 1/22/04	NHTSA	Fractions: ± 1/8	CHECKED: STAFF	DATE: 6/7/04	CONTRACT NO.: DTMB 22-04-C-07010	Decimals: ± .01	SCALE: 1=1	REVISION: C	DESIGNED BY: GRESAC, INC.	Surface Finish: 125	DO NOT SCALE DRAWING		125 DIMENSIONS UNLESS OTHERWISE INDICATED	FINISH: BLACK OXIDE			DRAWING TITLE: FULL DUMMY H-POINT TOOL INTERFACE DISK	MATERIAL: 1018 CRS			DRAWING NUMBER: 11FD7112				Page: 1/1
UNLESS OTHERWISE SPECIFIED DIMENSIONS ARE IN INCHES	ENGINEERED: M. ARTS	DATE: 1/22/04	DEPARTMENT OF TRANSPORTATION																																				
Angles: ± 1/4	DRAWN: M. ARTS	DATE: 1/22/04	NHTSA																																				
Fractions: ± 1/8	CHECKED: STAFF	DATE: 6/7/04	CONTRACT NO.: DTMB 22-04-C-07010																																				
Decimals: ± .01	SCALE: 1=1	REVISION: C	DESIGNED BY: GRESAC, INC.																																				
Surface Finish: 125	DO NOT SCALE DRAWING		125 DIMENSIONS UNLESS OTHERWISE INDICATED																																				
FINISH: BLACK OXIDE			DRAWING TITLE: FULL DUMMY H-POINT TOOL INTERFACE DISK																																				
MATERIAL: 1018 CRS			DRAWING NUMBER: 11FD7112																																				
			Page: 1/1																																				
																																							

4	3	2	1
D	C	B	A

REMOVE MATERIAL FROM THIS SIDE.



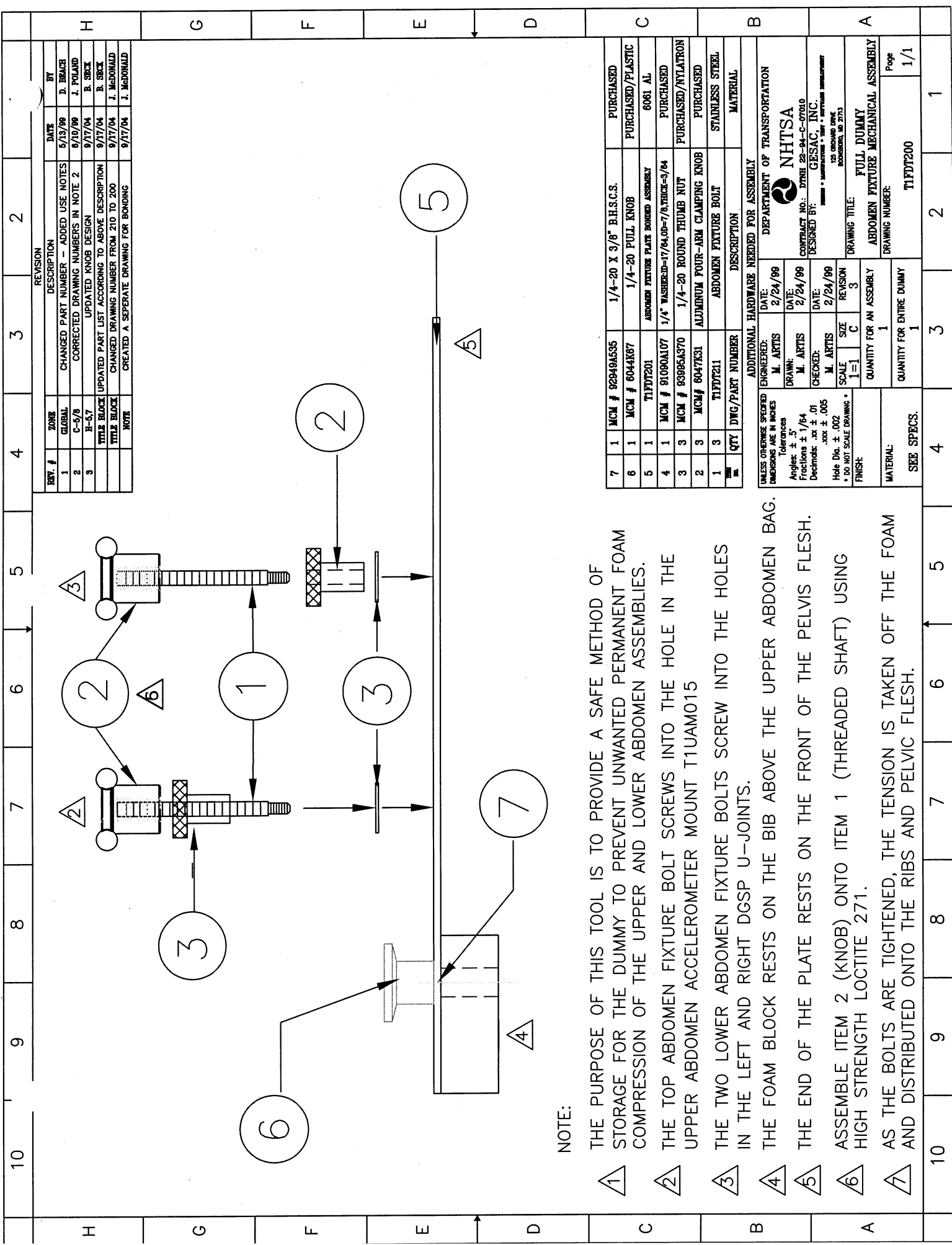
REVISIONS			
REV. #	ZONE	DESCRIPTION	DATE
01	A2	CHANGED PART NUMBER	2/4/04
			M. ARTIS

1	MCM# 56575K31	SHAFT DIA = .25" FLANGED BEARING	ALUM/FREON
QTY	DWG/PART NUMBER	DESCRIPTION	MATERIAL
UNLESS OTHERWISE SPECIFIED DIMENSIONS ARE IN INCHES			
Tolerances			
Angles: ± .5			
Fractions: ± 1/64			
Decimals: .xx ± .005			
Surface Finish: 125/			
* DO NOT SCALE DRAWING *			
FINISH:			
ENGINEERED: M. ARTIS DATE: 1/19/04			
DRAWN: M. ARTIS DATE: 1/19/04			
CHECKED: M. ARTIS DATE: 1/19/04			
SCALE: 2=1 SIZE: A REVISION: B1			
QUANTITY FOR AN ASSEMBLY: 1			
MATERIAL: MODIFIED PART			
QUANTITY FOR ENTIRE DUMMY: 1			
DRAWING TITLE: FULL DUMMY H-POINT TOOL BEARING			
DRAWING NUMBER: T1FD7T113			
Page: 1/1			

DEPARTMENT OF TRANSPORTATION  
**NHTSA**  
 CONTRACT NO.: DTMB 22-94-C-07010  
 DESIGNED BY: GESSAC, INC.  
125 ORCHARD ROAD  
 BOWERSVILLE, MD 21773

4	3	2	1
---	---	---	---

8	7	6	5	4	3	2	1																																				
<table border="1"> <tr> <td colspan="2">REV. #</td> <td>ZONE</td> <td>DATE</td> <td>BY</td> </tr> <tr> <td colspan="2">CD</td> <td>GENERAL</td> <td>8/2/04</td> <td>M. ARTIS</td> </tr> <tr> <td colspan="5">           REVISIONS            DESCRIPTION            THIS DWG REPLACES T1FD114B1         </td> </tr> </table>								REV. #		ZONE	DATE	BY	CD		GENERAL	8/2/04	M. ARTIS	REVISIONS DESCRIPTION THIS DWG REPLACES T1FD114B1																									
REV. #		ZONE	DATE	BY																																							
CD		GENERAL	8/2/04	M. ARTIS																																							
REVISIONS DESCRIPTION THIS DWG REPLACES T1FD114B1																																											
<p>NOTES:</p> <p>1. PLUG/MASK ALL HOLES BEFORE COATING.</p>																																											
<table border="1"> <tr> <th>QTY</th> <th>DWG/PART NUMBER</th> <th>DESCRIPTION</th> <th>MATERIAL</th> </tr> <tr> <td>1</td> <td>6081 AL</td> <td>BLACK ANODIZE</td> <td>6081 AL</td> </tr> <tr> <td colspan="4">           QUANTITY FOR AN ASSEMBLY: 1         </td> </tr> <tr> <td colspan="4">           QUANTITY FOR ENTIRE DUMMY: 1         </td> </tr> </table>								QTY	DWG/PART NUMBER	DESCRIPTION	MATERIAL	1	6081 AL	BLACK ANODIZE	6081 AL	QUANTITY FOR AN ASSEMBLY: 1				QUANTITY FOR ENTIRE DUMMY: 1																							
QTY	DWG/PART NUMBER	DESCRIPTION	MATERIAL																																								
1	6081 AL	BLACK ANODIZE	6081 AL																																								
QUANTITY FOR AN ASSEMBLY: 1																																											
QUANTITY FOR ENTIRE DUMMY: 1																																											
<table border="1"> <tr> <td colspan="2">UNLESS OTHERWISE SPECIFIED</td> <td colspan="2">ADDITIONAL HARDWARE NEEDED FOR ASSEMBLY</td> <td colspan="2">DEPARTMENT OF TRANSPORTATION</td> </tr> <tr> <td colspan="2">DIMENSIONS ARE IN INCHES</td> <td colspan="2">TOLERANCES</td> <td colspan="2">NHTSA</td> </tr> <tr> <td>Angles: ± 1/04</td> <td>Drawn: M. ARTIS</td> <td>DATE: 1/21/04</td> <td>Contract No.: DTRC 22-94-C-07010</td> <td colspan="2">DESIGNED BY: GIESAC, INC.</td> </tr> <tr> <td>Decimals: ± 01</td> <td>Checked: M. ARTIS</td> <td>DATE: 1/21/04</td> <td colspan="3">DRAWING TITLE: FULL DUMMY H-POINT TOOL PLATE</td> </tr> <tr> <td>Surface Finish: 125</td> <td>Scale: 1=1</td> <td>Size: B</td> <td colspan="3">DRAWING NUMBER: T1FD114</td> </tr> <tr> <td>• DO NOT SCALE DRAWING</td> <td>Scale: 1=1</td> <td>Revision: CD</td> <td colspan="3">Page: 1/1</td> </tr> </table>								UNLESS OTHERWISE SPECIFIED		ADDITIONAL HARDWARE NEEDED FOR ASSEMBLY		DEPARTMENT OF TRANSPORTATION		DIMENSIONS ARE IN INCHES		TOLERANCES		NHTSA		Angles: ± 1/04	Drawn: M. ARTIS	DATE: 1/21/04	Contract No.: DTRC 22-94-C-07010	DESIGNED BY: GIESAC, INC.		Decimals: ± 01	Checked: M. ARTIS	DATE: 1/21/04	DRAWING TITLE: FULL DUMMY H-POINT TOOL PLATE			Surface Finish: 125	Scale: 1=1	Size: B	DRAWING NUMBER: T1FD114			• DO NOT SCALE DRAWING	Scale: 1=1	Revision: CD	Page: 1/1		
UNLESS OTHERWISE SPECIFIED		ADDITIONAL HARDWARE NEEDED FOR ASSEMBLY		DEPARTMENT OF TRANSPORTATION																																							
DIMENSIONS ARE IN INCHES		TOLERANCES		NHTSA																																							
Angles: ± 1/04	Drawn: M. ARTIS	DATE: 1/21/04	Contract No.: DTRC 22-94-C-07010	DESIGNED BY: GIESAC, INC.																																							
Decimals: ± 01	Checked: M. ARTIS	DATE: 1/21/04	DRAWING TITLE: FULL DUMMY H-POINT TOOL PLATE																																								
Surface Finish: 125	Scale: 1=1	Size: B	DRAWING NUMBER: T1FD114																																								
• DO NOT SCALE DRAWING	Scale: 1=1	Revision: CD	Page: 1/1																																								



**NOTE:**

- 1 THE PURPOSE OF THIS TOOL IS TO PROVIDE A SAFE METHOD OF STORAGE FOR THE DUMMY TO PREVENT UNWANTED PERMANENT FOAM COMPRESSION OF THE UPPER AND LOWER ABDOMEN ASSEMBLIES.
- 2 THE TOP ABDOMEN FIXTURE BOLT SCREWS INTO THE HOLE IN THE UPPER ABDOMEN ACCELEROMETER MOUNT T1UAM015
- 3 THE TWO LOWER ABDOMEN FIXTURE BOLTS SCREW INTO THE HOLES IN THE LEFT AND RIGHT DGSP U-JOINTS.
- 4 THE FOAM BLOCK RESTS ON THE BIB ABOVE THE UPPER ABDOMEN BAG.
- 5 THE END OF THE PLATE RESTS ON THE FRONT OF THE PELVIS FLESH.
- 6 ASSEMBLE ITEM 2 (KNOB) ONTO ITEM 1 (THREADED SHAFT) USING HIGH STRENGTH LOCTITE 271.
- 7 AS THE BOLTS ARE TIGHTENED, THE TENSION IS TAKEN OFF THE FOAM AND DISTRIBUTED ONTO THE RIBS AND PELVIC FLESH.

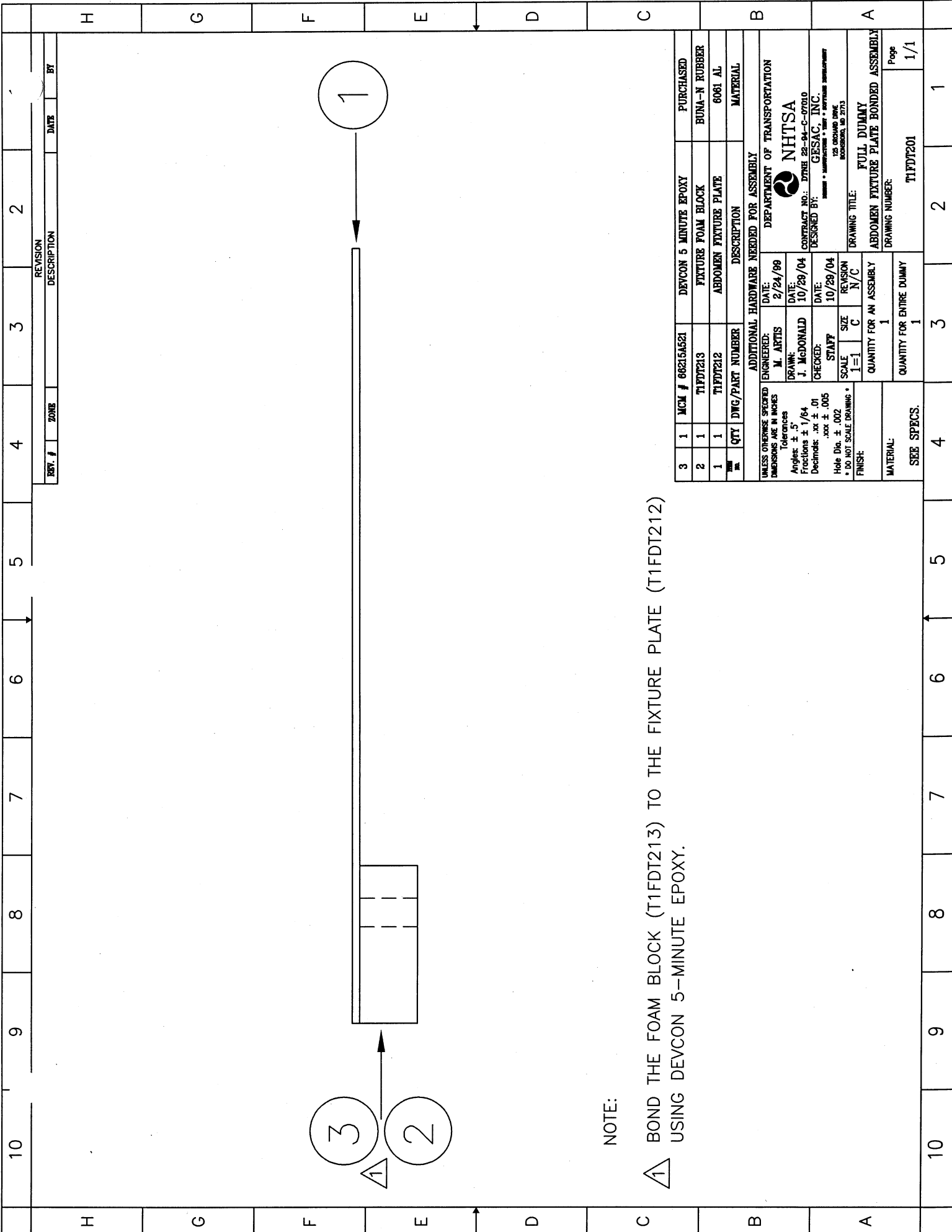
REV. #	ZONE	DESCRIPTION	DATE	BY
1	GLOBAL	CHANGED PART NUMBER - ADDED USE NOTES	5/15/99	D. BRACH
2	C-5/8	CORRECTED DRAWING NUMBERS IN NOTE 2	6/10/99	J. POLAND
3	H-5/7	UPDATED KNOB DESIGN	9/17/04	B. SECK
	TITLE BLOCK	UPDATED PART LIST ACCORDING TO ABOVE DESCRIPTION	9/17/04	B. SECK
		CHANGED DRAWING NUMBER FROM 210 TO 200	9/17/04	J. McDONALD
	NOTE	CREATED A SEPARATE DRAWING FOR BONDING	9/17/04	J. McDONALD

QTY	DWG/PART NUMBER	DESCRIPTION	MATERIAL
1	MCM # 9294A535	1/4-20 X 3/8" B.H.S.C.S.	PURCHASED
1	MCM # 6044K67	1/4-20 PULL KNOB	PURCHASED/PLASTIC
1	T1FDT201	ABDOMEN FIXTURE PLATE BONOED ASSEMBLY	6061 AL
1	MCM # 91090A107	1/4" WASHER-D=17/64,OD=7/8,THICK=3/64	PURCHASED
3	MCM # 93995A370	1/4-20 ROUND THUMB NUT	PURCHASED/NYLATRON
2	MCM # 6047K31	ALUMINUM FOUR-ARM CLAMPING KNOB	PURCHASED
1	T1FDT211	ABDOMEN FIXTURE BOLT	STAINLESS STEEL

ADDITIONAL HARDWARE NEEDED FOR ASSEMBLY	
ENGINEERED:	M. ARTIS
DATE:	2/24/99
DRAWN:	M. ARTIS
DATE:	2/24/99
CHECKED:	M. ARTIS
DATE:	2/24/99
SCALE:	1=1
SIZE:	C
REVISION:	3
QUANTITY FOR AN ASSEMBLY:	1
QUANTITY FOR ENTIRE DUMMY:	1

UNLESS OTHERWISE SPECIFIED DIMENSIONS ARE IN INCHES  
 Tolerances  
 Angles: ± 5°  
 Fractions: ± 1/64  
 Decimals: .xxx ± .005  
 Hole Dia: ± .002  
 \* DO NOT SCALE DRAWING \*  
 FINISH:  
 MATERIAL:  
 SEE SPECS.

DEPARTMENT OF TRANSPORTATION  
 NHTSA  
 CONTRACT NO.: DTNH 22-94-C-07010  
 DESIGNED BY: GESAC, INC.  
 125 DEWATER DRIVE  
 ROCKFORD, MD 2713  
 DRAWING TITLE: FULL DUMMY ABDOMEN FIXTURE MECHANICAL ASSEMBLY  
 DRAWING NUMBER: T1FDT200  
 Page 1/1



NOTE:

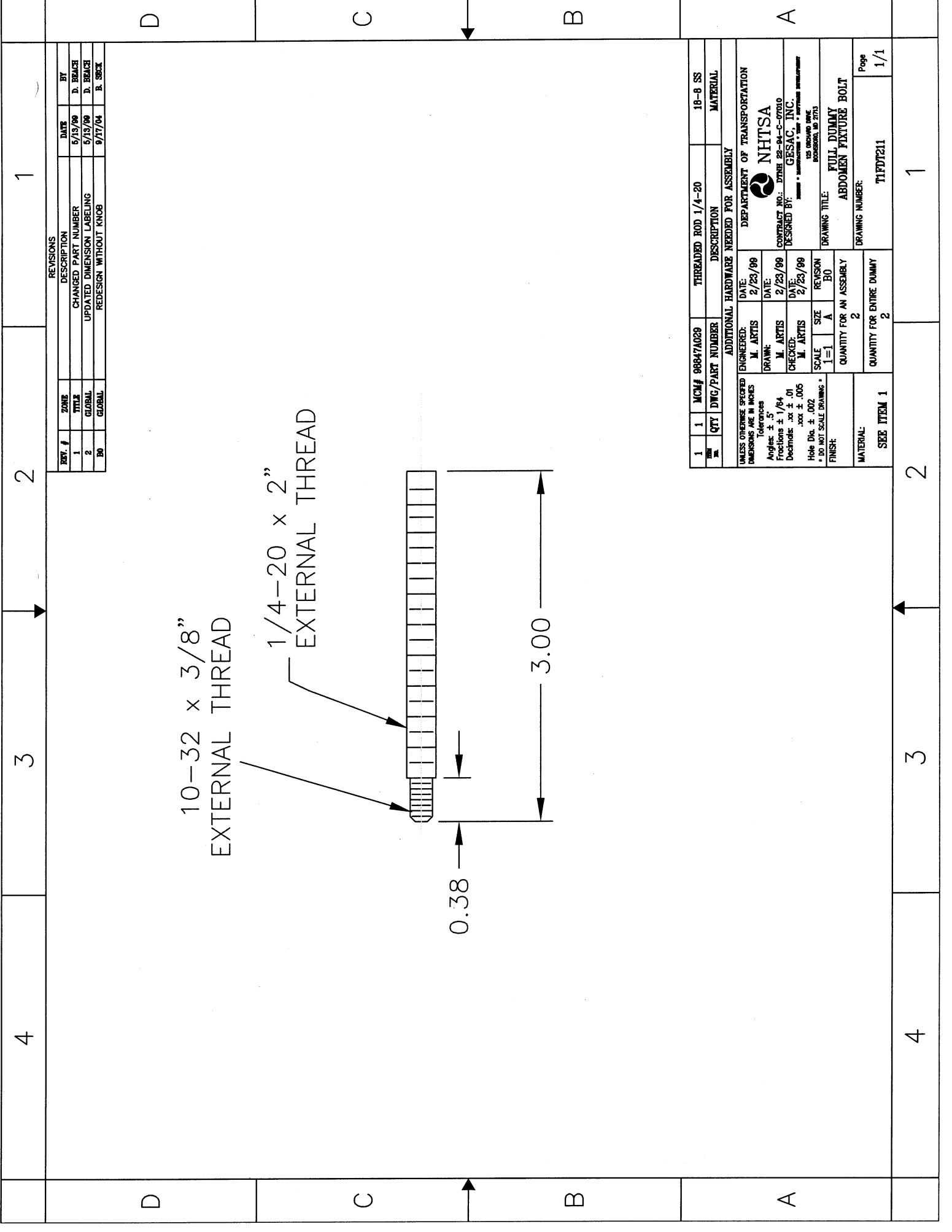
⚠ BOND THE FOAM BLOCK (T1FDT213) TO THE FIXTURE PLATE (T1FDT212) USING DEVCON 5-MINUTE EPOXY.

3	1	MCM # 68215A521	DEVCON 5 MINUTE EPOXY	DEPARTMENT OF TRANSPORTATION
2	1	T1FDT213	FIXTURE FOAM BLOCK	NHTSA
1	1	T1FDT212	ABDOMEN FIXTURE PLATE	CONTRACT NO.: DTNH 22-94-C-07010
1	1	QTY DWG/PART NUMBER	DESCRIPTION	DESIGNED BY: GESAC, INC.
ADDITIONAL HARDWARE NEEDED FOR ASSEMBLY				
UNLESS OTHERWISE SPECIFIED		ENGINEERED:	DATE:	DEPARTMENT OF TRANSPORTATION
DIMENSIONS ARE IN INCHES		M. ARTIS	2/24/99	NHTSA
Tolerances		DRAWN:	DATE:	CONTRACT NO.: DTNH 22-94-C-07010
Angles: ± .5°		J. McDONALD	10/28/04	DESIGNED BY: GESAC, INC.
Fractions: ± 1/64		CHECKED:	DATE:	125 ORANGE BLDG
Decimals: .xx ± .01		STAFF	10/28/04	ROCKWELL 15-2115
Hole Dia. ± .002		SCALE	SIZE	REVISION
• DO NOT SCALE DRAWING •		1=1	C	N/C
FINISH:		QUANTITY FOR AN ASSEMBLY		
		1		
MATERIAL:		QUANTITY FOR ENTIRE DUMMY		
		1		
SEE SPECS.		DRAWING NUMBER:		
		T1FDT201		
		Page		
		1/1		

H 10 9 8 7 6 5 4 3 2

H  
G  
F  
E  
D  
C  
B  
A

H 10 9 8 7 6 5 4 3 2



REVISIONS				
REV. #	ZONE	DESCRIPTION	DATE	BY
1	GLOBAL	CHANGED PART NUMBER	5/15/99	D. BRACE
2	GLOBAL	UPDATED DIMENSION LABELING	5/15/99	D. BRACE
3	GLOBAL	REDESIGN WITHOUT KNOB	9/17/04	B. SROCK

REV. #	QTY	MCM#	DWG/PART NUMBER	DESCRIPTION	MATERIAL
1	1	98847A029	THREADED ROD 1/4-20	18-8 SS	

UNLESS OTHERWISE SPECIFIED DIMENSIONS ARE IN INCHES	
Angles	± 5'
Fractions	± 1/64
Decimals	xxx ± .01
Hide Dls.	± .002
* DO NOT SCALE DRAWING *	

ENGINEERED:		DATE:	
M. ARTIS	2/23/99	M. ARTIS	2/23/99
M. ARTIS	2/23/99	M. ARTIS	2/23/99

SCALE		SIZE		REVISION	
1=1	A	B0	2	QUANTITY FOR AN ASSEMBLY	
1=1		A	B0	QUANTITY FOR ENTIRE DUMMY	
1=1		A	B0	2	

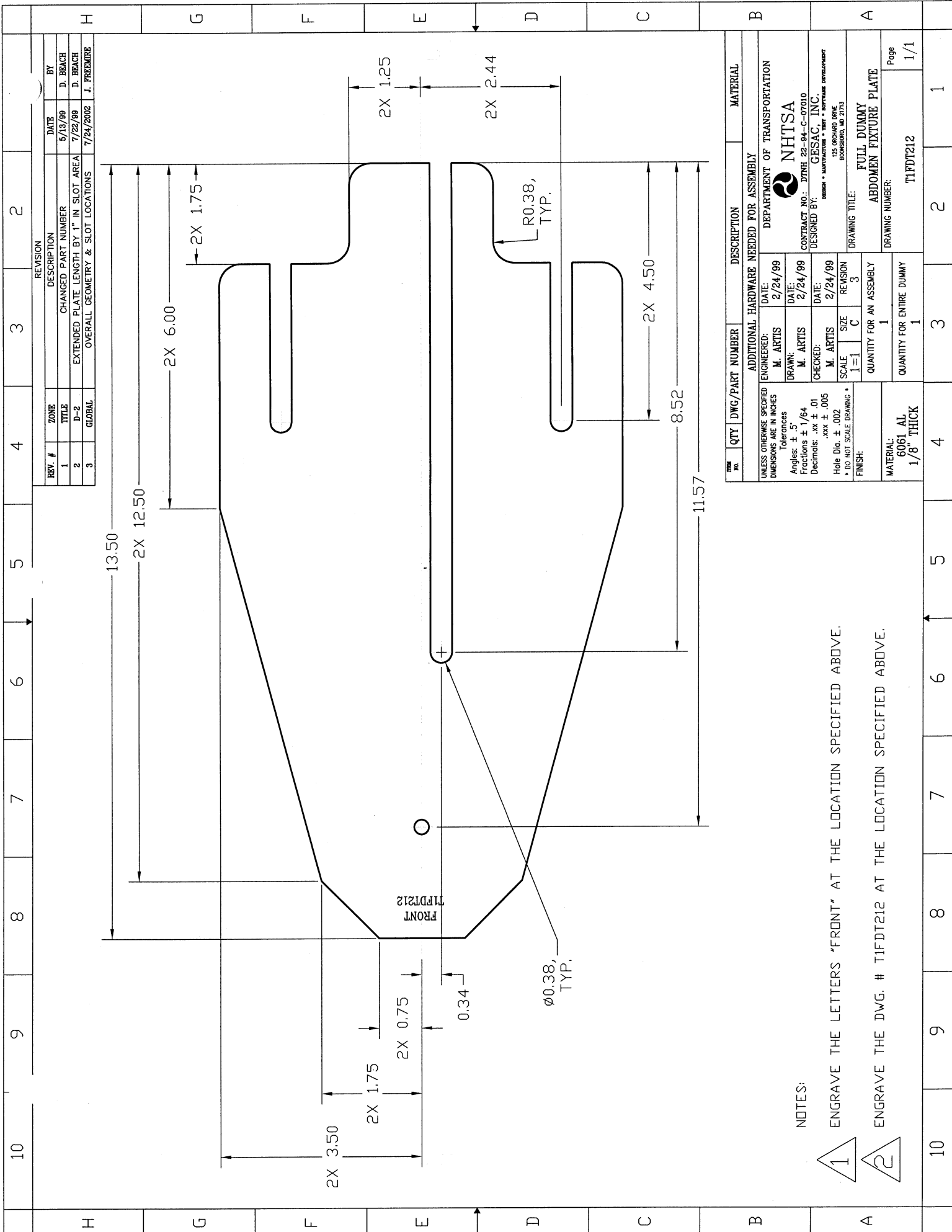
  

MATERIAL:	
SEE ITEM 1	

DRAWING TITLE:	
FULL DUMMY ABDOMEN FIXTURE BOLT	
DRAWING NUMBER:	
T1FDT211	
Page	
1/1	





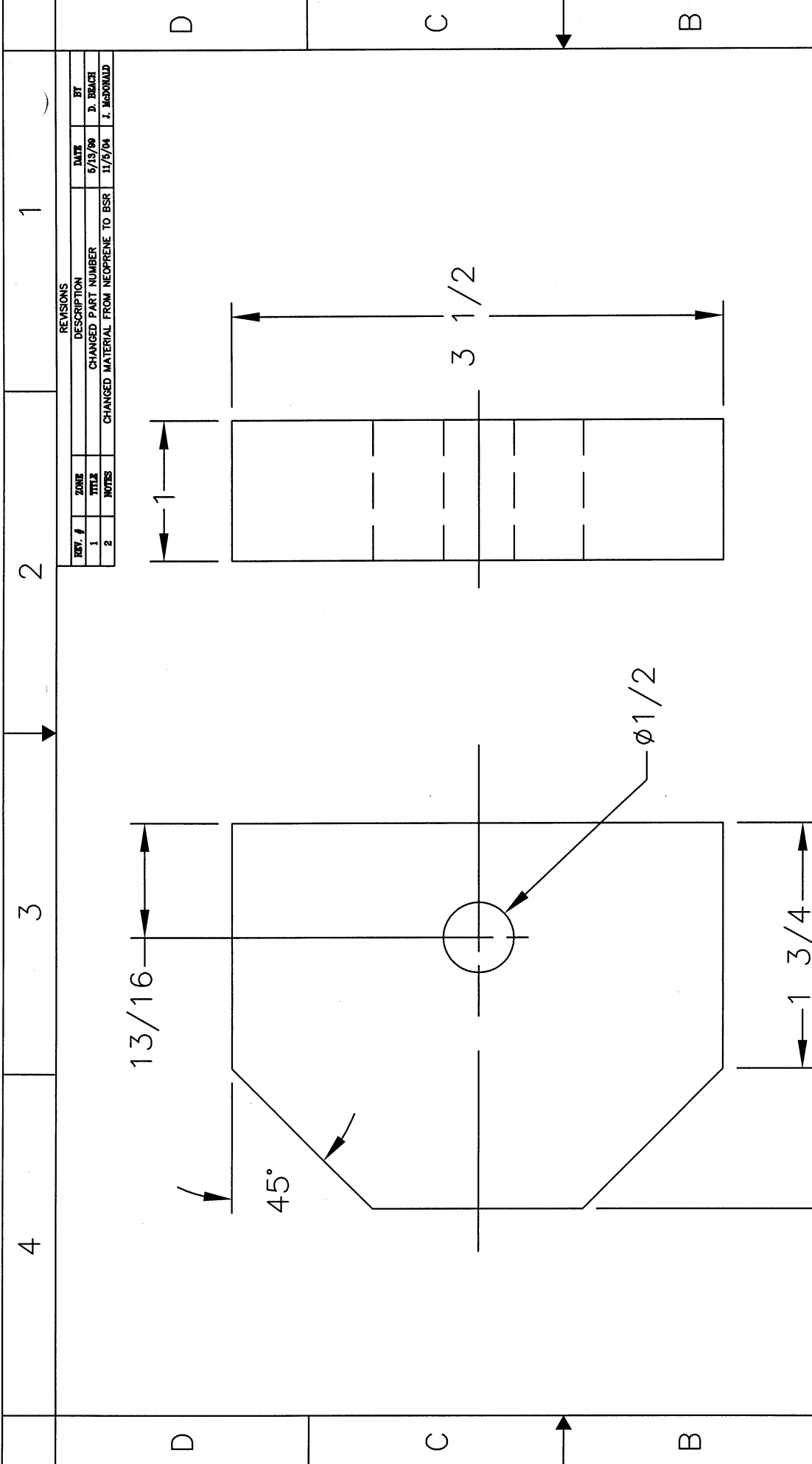
REV. #	ZONE	DESCRIPTION	DATE	BY
1	TITLE	CHANGED PART NUMBER	5/13/99	D. BRACH
2	D-2	EXTENDED PLATE LENGTH BY 1" IN SLOT AREA	7/22/99	D. BRACH
3	GLOBAL	OVERALL GEOMETRY & SLOT LOCATIONS	7/24/2002	J. FREEMIRE

QTY	DWG/PART NUMBER	DESCRIPTION	MATERIAL
ADDITIONAL HARDWARE NEEDED FOR ASSEMBLY			
ENGINEERED: M. ARTIS		DATE: 2/24/99	
DRAWN: M. ARTIS		DATE: 2/24/99	
CHECKED: M. ARTIS		DATE: 2/24/99	
SCALE: 1=1	SIZE: C	REVISION: 3	
QUANTITY FOR AN ASSEMBLY: 1		DRAWING TITLE: FULL DUMMY ABDOMEN FIXTURE PLATE	
QUANTITY FOR ENTIRE DUMMY: 1		DRAWING NUMBER: T1FDT212	

NOTES:

1 ENGRAVE THE LETTERS 'FRONT' AT THE LOCATION SPECIFIED ABOVE.

2 ENGRAVE THE DWG. # T1FDT212 AT THE LOCATION SPECIFIED ABOVE.



REV.	QTY	DWG/PART NUMBER	DESCRIPTION	MATERIAL
1	1		ADDITIONAL HARDWARE NEEDED FOR ASSEMBLY	
UNLESS OTHERWISE SPECIFIED: DIMENSIONS ARE IN INCHES Tolerances Angles: ± .5 Fractions: ± 1/64 Decimals: .xx ± .01 Hole Dia: ± .002 * DO NOT SCALE DRAWING *				
ENGINEERED:	M. ARTIS	DATE:	8/9/99	
DRAWN:	M. ARTIS	DATE:	8/9/99	
CHECKED:	M. ARTIS	DATE:	8/9/99	
SCALE:	1=1	SIZE:	A	
REVISION:	2			
QUANTITY FOR AN ASSEMBLY: 1				
QUANTITY FOR ENTIRE DUMMY: 1				
MATERIAL: SEE NOTE				
DRAWING TITLE: FULL DUMMY ABDOMEN FIXTURE FOAM BLOCK				
DRAWING NUMBER: T1FDT213				
Page 1/1				

DEPARTMENT OF TRANSPORTATION  
**NHTSA**  
 CONTRACT NO.: DTMB 99-04-C-0700  
 DESIGNED BY: GESAC, INC.  
 125 BROADWAY, 10TH FLOOR  
 BOSTON, MA 02113

REV. #	ZONE	TITLE	DATE	BY
1		CHANGED PART NUMBER	5/19/99	D. BRACE
2		CHANGED MATERIAL FROM NEOPRENE TO BSR	11/5/04	J. McDONALD

REVISIONS  
 DESCRIPTION  
 DATE  
 BY

13/16  
 45°  
 3 1/2  
 1  
 1  
 2 3/4  
 1/2

NOTE:  
 MATERIAL IS BLENDED SPONGE RUBBER, FIRM STIFFNESS  
 ( REFERENCE MCM # 8647K49).

1

4 3 2 1

4 3 2 1

4 3 2 1

4 3 2 1