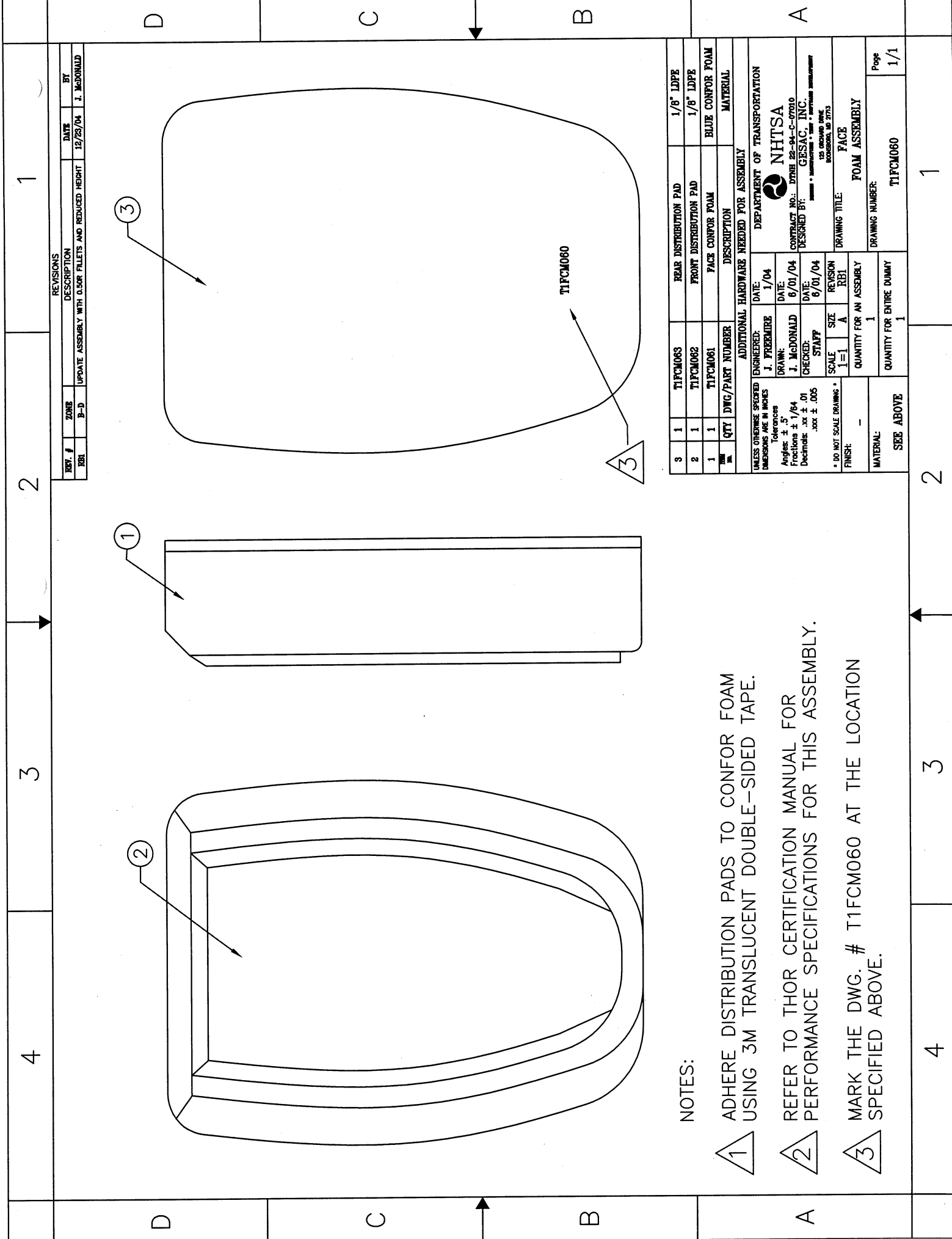


16	15	14	13	12	11	10	9	8	7	6	5	4	3	2	1																																												
J	I	H	G	F	E	D	C	B	A																																																		
<table border="1"> <tr> <td>REV. #</td><td>ZONE</td><td>DESCRIPTION</td><td>DATE</td><td>BY</td> </tr> <tr> <td>1</td><td>GLOBAL</td><td>UPDATED TO THOR ALPHA 1.1.</td><td>10/17/01</td><td>M. ARTIS</td> </tr> <tr> <td>2</td><td>GLOBAL</td><td>UPDATE TO THOR-NT</td><td>5/28/05</td><td>J. McDONALD</td> </tr> </table>																REV. #	ZONE	DESCRIPTION	DATE	BY	1	GLOBAL	UPDATED TO THOR ALPHA 1.1.	10/17/01	M. ARTIS	2	GLOBAL	UPDATE TO THOR-NT	5/28/05	J. McDONALD																													
REV. #	ZONE	DESCRIPTION	DATE	BY																																																							
1	GLOBAL	UPDATED TO THOR ALPHA 1.1.	10/17/01	M. ARTIS																																																							
2	GLOBAL	UPDATE TO THOR-NT	5/28/05	J. McDONALD																																																							
<p>NOTES:</p> <p>1 THE NECK IS SHOWN FOR REFERENCE PURPOSE ONLY.</p> <p>2 THE WIRES FROM THE FACE LOAD CELLS ARE ROUTED INSIDE THE HEAD AND EXITS OUT THE BACK OF THE SKULL CAP.</p>																																																											
<table border="1"> <tr> <td>QTY</td><td>DWG/PART NUMBER</td><td>DESCRIPTION</td><td>MATERIAL</td> </tr> <tr> <td colspan="4"> ADDITIONAL HARDWARE NEEDED FOR ASSEMBLY UNLESS OTHERWISE SPECIFIED DIMENSIONS ARE IN INCHES Tolerances Angles: as shown Fractions: $\pm 1/64$ Decimals: .xxx $\pm .01$.xxx $\pm .005$ Hole Dia. $\pm .002$ * DO NOT SCALE DRAWING * FINISH: </td> </tr> <tr> <td>1</td><td></td><td>QUANTITY FOR AN ASSEMBLY</td><td>ESSELECICAL ASSEMBLY</td> </tr> <tr> <td>1</td><td></td><td>QUANTITY FOR ENTIRE DUMMY</td><td>T1FCE000</td> </tr> <tr> <td>1</td><td></td><td>DATE: 4/20/01</td><td>DEPARTMENT OF TRANSPORTATION</td> </tr> <tr> <td>1</td><td>J. POLAND</td><td>DATE: 4/20/01</td><td>NHTSA</td> </tr> <tr> <td>1</td><td>J. POLAND</td><td>DATE: 4/20/01</td><td>CONTRACT NO.: DTHA 22-94-C-07010</td> </tr> <tr> <td>1</td><td>M. ARTIS</td><td>DATE: 4/27/01</td><td>DESIGNED BY: GESAC, INC.</td> </tr> <tr> <td>1</td><td>E</td><td>REVISION 2</td><td>125 RICHARD DRIVE ROCKFORD, IL 61153</td> </tr> <tr> <td>1</td><td></td><td>DRAWING TITLE: FACE ELECTRICAL ASSEMBLY</td><td></td> </tr> <tr> <td>1</td><td></td><td>DRAWING NUMBER: T1FCE000</td><td>Page 1/1</td> </tr> </table>																QTY	DWG/PART NUMBER	DESCRIPTION	MATERIAL	ADDITIONAL HARDWARE NEEDED FOR ASSEMBLY UNLESS OTHERWISE SPECIFIED DIMENSIONS ARE IN INCHES Tolerances Angles: as shown Fractions: $\pm 1/64$ Decimals: .xxx $\pm .01$.xxx $\pm .005$ Hole Dia. $\pm .002$ * DO NOT SCALE DRAWING * FINISH:				1		QUANTITY FOR AN ASSEMBLY	ESSELECICAL ASSEMBLY	1		QUANTITY FOR ENTIRE DUMMY	T1FCE000	1		DATE: 4/20/01	DEPARTMENT OF TRANSPORTATION	1	J. POLAND	DATE: 4/20/01	NHTSA	1	J. POLAND	DATE: 4/20/01	CONTRACT NO.: DTHA 22-94-C-07010	1	M. ARTIS	DATE: 4/27/01	DESIGNED BY: GESAC, INC.	1	E	REVISION 2	125 RICHARD DRIVE ROCKFORD, IL 61153	1		DRAWING TITLE: FACE ELECTRICAL ASSEMBLY		1		DRAWING NUMBER: T1FCE000	Page 1/1
QTY	DWG/PART NUMBER	DESCRIPTION	MATERIAL																																																								
ADDITIONAL HARDWARE NEEDED FOR ASSEMBLY UNLESS OTHERWISE SPECIFIED DIMENSIONS ARE IN INCHES Tolerances Angles: as shown Fractions: $\pm 1/64$ Decimals: .xxx $\pm .01$.xxx $\pm .005$ Hole Dia. $\pm .002$ * DO NOT SCALE DRAWING * FINISH:																																																											
1		QUANTITY FOR AN ASSEMBLY	ESSELECICAL ASSEMBLY																																																								
1		QUANTITY FOR ENTIRE DUMMY	T1FCE000																																																								
1		DATE: 4/20/01	DEPARTMENT OF TRANSPORTATION																																																								
1	J. POLAND	DATE: 4/20/01	NHTSA																																																								
1	J. POLAND	DATE: 4/20/01	CONTRACT NO.: DTHA 22-94-C-07010																																																								
1	M. ARTIS	DATE: 4/27/01	DESIGNED BY: GESAC, INC.																																																								
1	E	REVISION 2	125 RICHARD DRIVE ROCKFORD, IL 61153																																																								
1		DRAWING TITLE: FACE ELECTRICAL ASSEMBLY																																																									
1		DRAWING NUMBER: T1FCE000	Page 1/1																																																								



NOTES:

- 1 ADHERE DISTRIBUTION PADS TO CONFOR FOAM USING 3M TRANSLUCENT DOUBLE-SIDED TAPE.
- 2 REFER TO THOR CERTIFICATION MANUAL FOR PERFORMANCE SPECIFICATIONS FOR THIS ASSEMBLY.
- 3 MARK THE DWG. # T1FCM060 AT THE LOCATION SPECIFIED ABOVE.

3	1	T1FCM063	REAR DISTRIBUTION PAD	1/8" LDPE
2	1	T1FCM062	FRONT DISTRIBUTION PAD	1/8" LDPE
1	1	T1FCM061	FACE CONFOR FOAM	BLUE CONFOR FOAM MATERIAL
QTY	DWG/PART NUMBER	DESCRIPTION	MATERIAL	

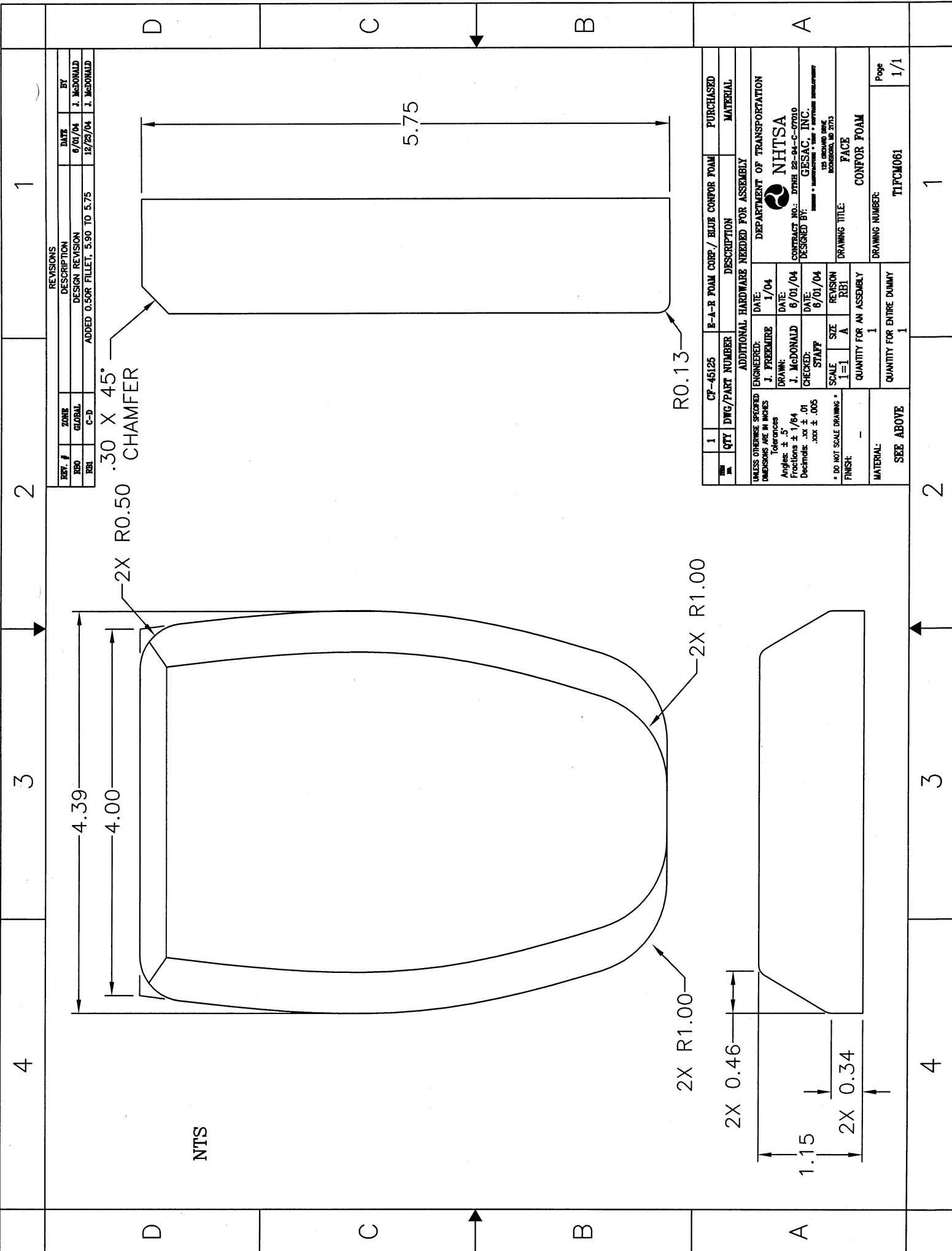
UNLESS OTHERWISE SPECIFIED DIMENSIONS ARE IN INCHES		TOLERANCES	
Angles	± 5°	Fractions	± 1/64
Decimals	.xx ± .01	.xxx ± .005	
* DO NOT SCALE DRAWING *			
FINISH:	-	SCALE:	1=1 A
QUANTITY FOR AN ASSEMBLY	1	REVISION	RB1
QUANTITY FOR ENTIRE DUMMY	1		
MATERIAL:	SEE ABOVE		

ADDITIONAL HARDWARE NEEDED FOR ASSEMBLY

DEPARTMENT OF TRANSPORTATION
NHTSA
 CONTRACT NO.: DTMB 22-04-C-07010
 DESIGNED BY: GESAC, INC.
122 ORCHARD DRIVE
 BOZEMAN, MT 59715

DRAWING TITLE: FACE
 FOAM ASSEMBLY

DRAWING NUMBER: T1FCM060
 Page 1/1



REVISIONS				
REV. #	ZONE	DESCRIPTION	DATE	BY
R00	GLOBAL	DESIGN REVISION	6/01/04	J. McDONALD
R01	C-D	ADDED 0.50R FILLET, 5.90 TO 5.75	12/29/04	J. McDONALD

.30 X 45°
CHAMFER

QTY	DWG/PART NUMBER	E-A-R FOAM CORP./ BLUE CONFOR FOAM	DESCRIPTION	PURCHASED MATERIAL
1	CF-45125			

ADDITIONAL HARDWARE NEEDED FOR ASSEMBLY	
DATE	DESCRIPTION
1/04	

UNLESS OTHERWISE SPECIFIED	
DIMENSIONS ARE IN INCHES	
Tolerances	
Angles	± .5°
Fractions	± 1/64
Decimals	.xx ± .01
	.xxx ± .005

ENGINEERED:	
DATE	BY
1/04	J. FREEMIRE

DRAWN:	
DATE	BY
6/01/04	J. McDONALD

CHECKED:	
DATE	BY
6/01/04	STAFF

SCALE	
SIZE	REVISION
1=1	A

FINISH:	
QUANTITY FOR AN ASSEMBLY	QUANTITY FOR ENTIRE DUMMY
1	1

MATERIAL:	
SEE ABOVE	

DEPARTMENT OF TRANSPORTATION	
NHTSA	
CONTRACT NO.: DTNH 22-94-C-07010	
DESIGNED BY: GESAC, INC.	
125 ORCHARD BLVD ROCKFORD, IL 61273	
DRAWING TITLE:	FACE
DRAWING NUMBER:	CONFOR FOAM
Page	1/1

NTS

R0.13

2X R1.00
2X R1.00
2X R0.50 CHAMFER

2X 0.46

1.15
2X 0.34

1

2

3

4

D

C

B

A

D

C

B

A

1

2

3

4

Page

1/1

DRAWING NUMBER:

TIFCM061

QUANTITY FOR ENTIRE DUMMY

1

SEE ABOVE

1

QUANTITY FOR AN ASSEMBLY

1

DRAWING NUMBER:

CONFOR FOAM

DRAWING TITLE:

FACE

125 ORCHARD BLVD
ROCKFORD, IL 61273

DESIGNED BY: GESAC, INC.

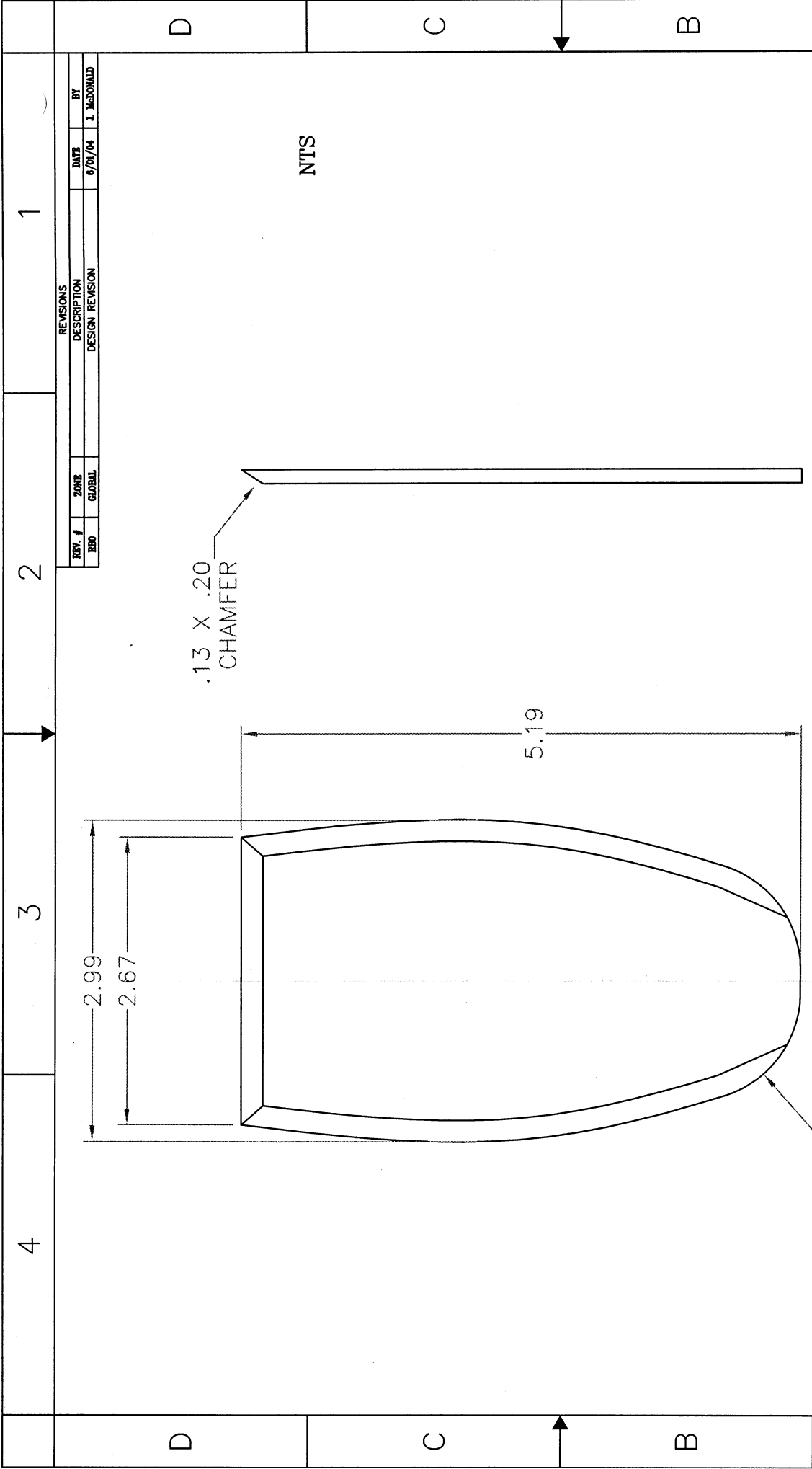
CONTRACT NO.: DTNH 22-94-C-07010

DEPARTMENT OF TRANSPORTATION

NHTSA

DRAWING NUMBER:

TIFCM061

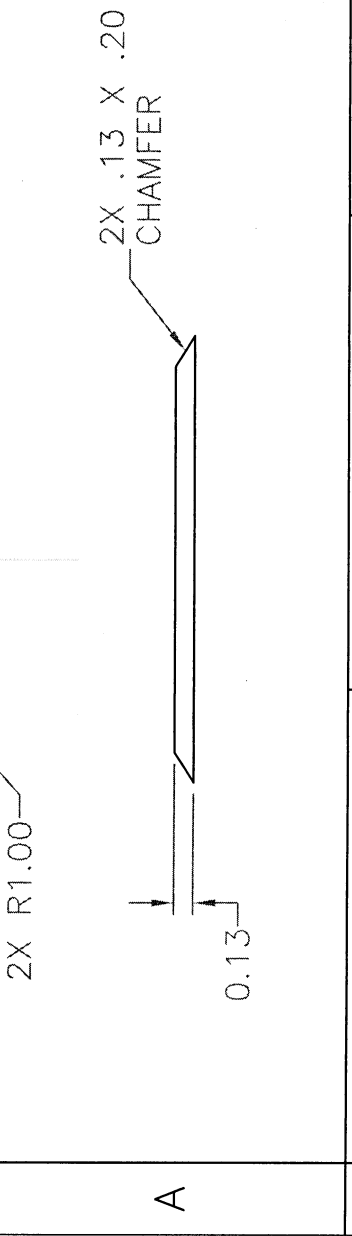


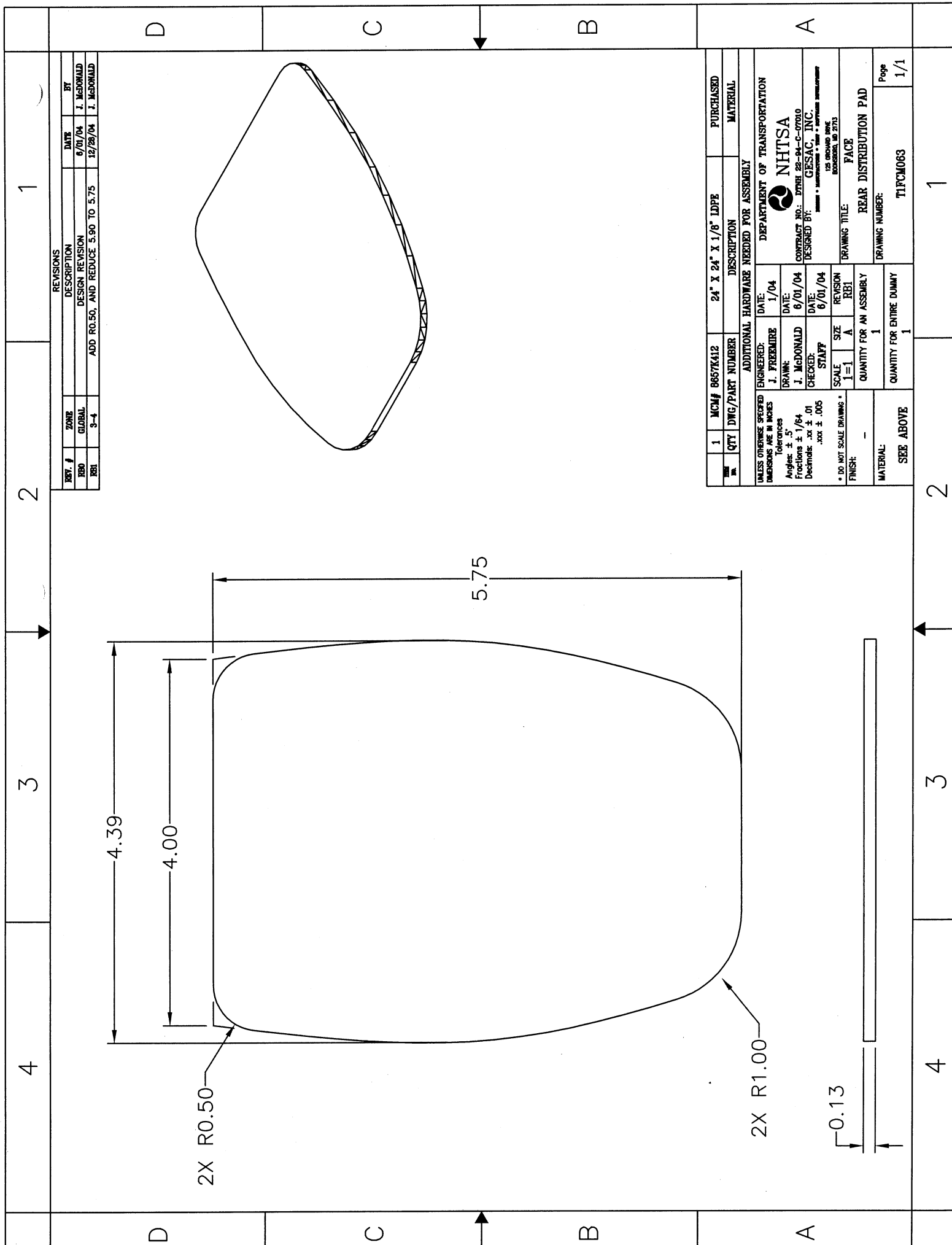
REV. #	ZONE	DESCRIPTION	DATE	BY
1	GLOBAL	DESIGN REVISION	6/01/04	J. McDONALD

MCN#	QTY	DWG/PART NUMBER	DESCRIPTION	PURCHASED	MATERIAL
8657K412	1	24" X 24" X 1/8" LDPE	ADDITIONAL HARDWARE NEEDED FOR ASSEMBLY		

UNLESS OTHERWISE SPECIFIED	ENGINEERED:	DATE:	DEPARTMENT OF TRANSPORTATION
DIMENSIONS ARE IN INCHES	J. FREEMIRE	1/04	NHTSA
Tolerances	DRAWN:	DATE:	CONTRACT NO.: DTRE 28-94-C-0700
Angles $\pm .5$	J. McDONALD	6/01/04	DESIGNED BY: GESAC, INC.
Fractions $\pm 1/64$	CHECKED:	DATE:	STAFF
Decimals $\pm .01$	STAFF	6/01/04	SCALE
$\pm .005$	SCALE	SIZE	REVISION
	1=1	A	RBO
			QUANTITY FOR AN ASSEMBLY
			1
			QUANTITY FOR ENTIRE DUMMY
			1

DRAWING TITLE:	FACE
FRONT DISTRIBUTION PAD	
DRAWING NUMBER:	T1FCM062
Page	1/1





REV. #	ZONE	DESCRIPTION	DATE	BY
1	GLOBAL	DESIGN REVISION	6/01/04	J. McDONALD
2	3-4	ADD R0.50, AND REDUCE 5.90 TO 5.75	12/29/04	J. McDONALD

QTY	MCM#	DWG/PART NUMBER	DESCRIPTION	DESCRIPTION	PURCHASED
1	8857K412		24" X 24" X 1/8" LDPE		MATERIAL

UNLESS OTHERWISE SPECIFIED	
ENGINEERED:	J. FREEMIRE
DATE:	1/04
DRAWN:	J. McDONALD
DATE:	6/01/04
CHECKED:	STAFF
DATE:	6/01/04
SCALE:	1=1
SIZE:	A
REVISION:	RBI
QUANTITY FOR AN ASSEMBLY:	1
QUANTITY FOR ENTIRE DUMMY:	1
MATERIAL:	SEE ABOVE

ADDITIONAL HARDWARE NEEDED FOR ASSEMBLY	
DATE:	1/04
DESIGNED BY:	GESAC, INC.
CONTRACT NO.:	DTRH 22-94-C-07010
DESIGNED BY:	GESAC, INC.
125 ORLAND DRIVE BOZEMAN, ID 83725	

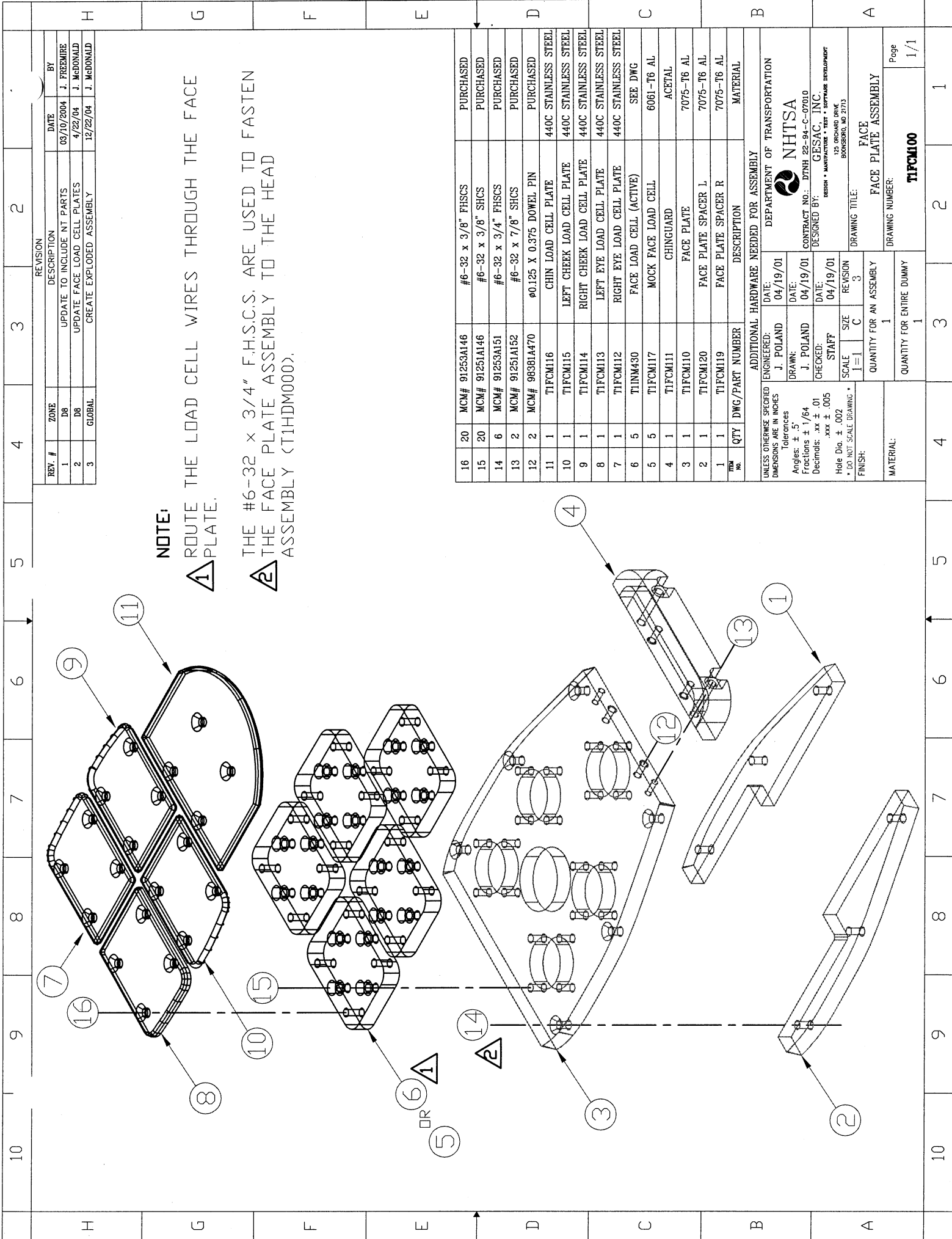
DEPARTMENT OF TRANSPORTATION	
NHTSA	
DRAWING TITLE: REAR DISTRIBUTION PAD	
FACE	
DRAWING NUMBER: TIFCM063	
Page	1/1

4 2 1

3 2 1

4 3 2 1

4 3 2 1



NOTE:

ROUTE THE LOAD CELL WIRES THROUGH THE FACE PLATE.

THE #6-32 x 3/4" F.H.S.C.S. ARE USED TO FASTEN THE FACE PLATE ASSEMBLY TO THE HEAD ASSEMBLY (T1HDM000).

REV. #	ZONE	DESCRIPTION	DATE	BY
1	DB	UPDATE TO INCLUDE NT PARTS	03/10/2004	J. FREEMIRE
2	DB	UPDATE FACE LOAD CELL PLATES	4/22/04	J. McDONALD
3	GLOBAL	CREATE EXPLODED ASSEMBLY	12/22/04	J. McDONALD

ITEM NO.	QTY	DWG/PART NUMBER	DESCRIPTION	MATERIAL
16	20	MCM# 91253A146	#6-32 x 3/8" FHSCS	PURCHASED
15	20	MCM# 91251A146	#6-32 x 3/8" SHCS	PURCHASED
14	6	MCM# 91253A151	#6-32 x 3/4" FHSCS	PURCHASED
13	2	MCM# 91251A152	#6-32 x 7/8" SHCS	PURCHASED
12	2	MCM# 98381A470	ø0.125 X 0.375 DOWEL PIN	PURCHASED
11	1	TIFCM116	CHIN LOAD CELL PLATE	440C STAINLESS STEEL
10	1	TIFCM115	LEFT CHEEK LOAD CELL PLATE	440C STAINLESS STEEL
9	1	TIFCM114	RIGHT CHEEK LOAD CELL PLATE	440C STAINLESS STEEL
8	1	TIFCM113	LEFT EYE LOAD CELL PLATE	440C STAINLESS STEEL
7	1	TIFCM112	RIGHT EYE LOAD CELL PLATE	440C STAINLESS STEEL
6	5	T1NM430	FACE LOAD CELL (ACTIVE)	SEE DWG
5	5	TIFCM117	MOCK FACE LOAD CELL	6061-T6 AL
4	1	TIFCM111	CHINGUARD	ACETAL
3	1	TIFCM110	FACE PLATE	7075-T6 AL
2	1	TIFCM120	FACE PLATE SPACER L	7075-T6 AL
1	1	TIFCM119	FACE PLATE SPACER R	7075-T6 AL

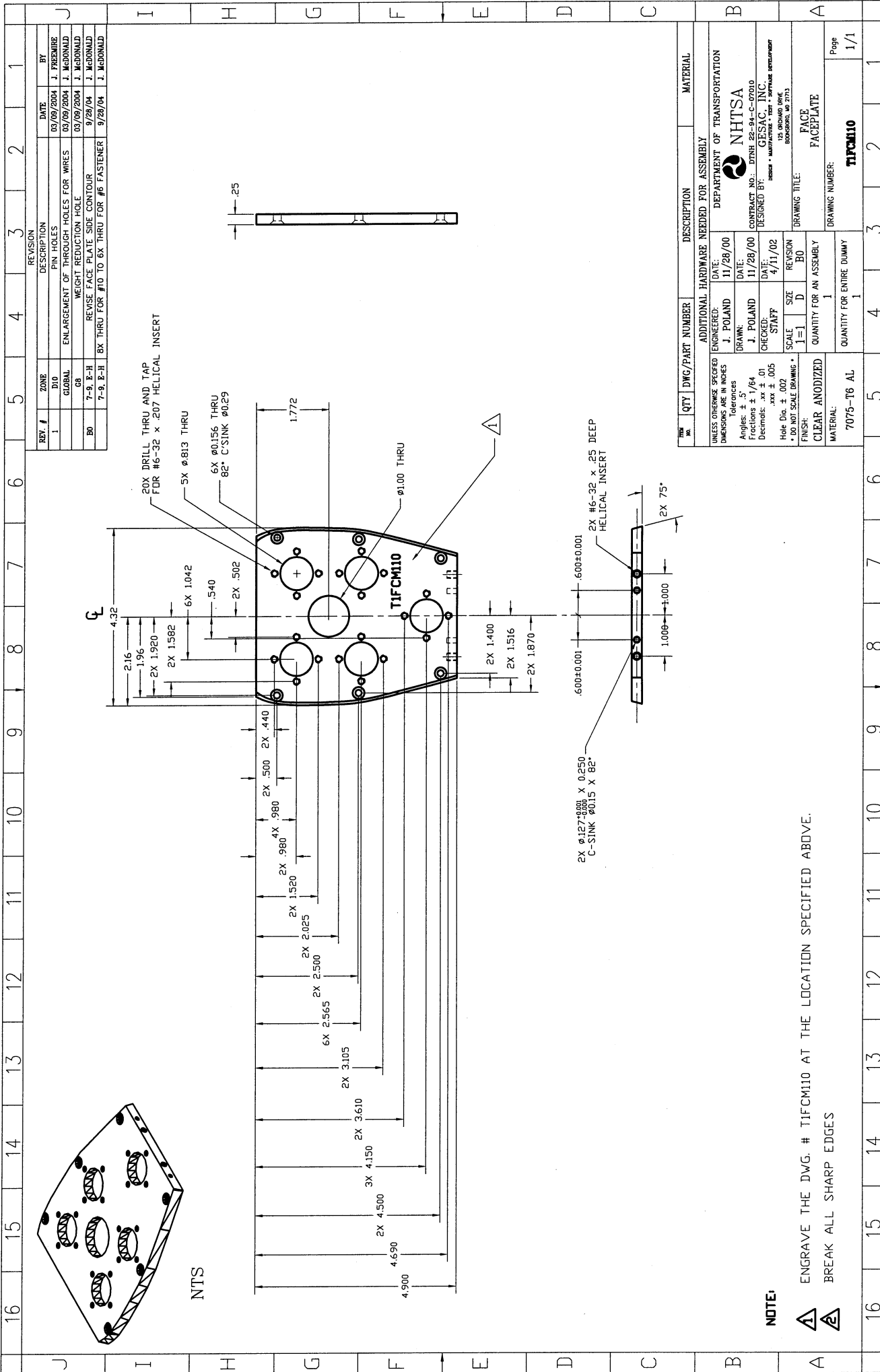
ADDITIONAL HARDWARE NEEDED FOR ASSEMBLY	
ENGINEERED:	J. POLAND
DATE:	04/19/01
DRAWN:	J. POLAND
DATE:	04/19/01
CHECKED:	STAFF
DATE:	04/19/01
SCALE	1 = 1 C
SIZE	C
REVISION	3
QUANTITY FOR AN ASSEMBLY	1
QUANTITY FOR ENTIRE DUMMY	1

UNLESS OTHERWISE SPECIFIED DIMENSIONS ARE IN INCHES
 Tolerances
 Angles: ± .5°
 Fractions: ± 1/64
 Decimals: .xx ± .01
 .xxx ± .005
 Hole Dia. ± .002
 • DO NOT SCALE DRAWING •

FINISH:

DEPARTMENT OF TRANSPORTATION
NHTSA
 CONTRACT NO.: DTNH 22-94-C-07010
 DESIGNED BY: GESAC, INC.
 DESIGN • MANUFACTURE • TEST • SOFTWARE DEVELOPMENT
 125 ORCHARD DRIVE
 BOONSBORO, MD 21713

DRAWING TITLE: FACE PLATE ASSEMBLY
 DRAWING NUMBER: TIFCM100
 Page 1/1



REV. #	ZONE	DESCRIPTION	DATE	BY
1	GLOBAL	ENLARGEMENT OF THROUGH HOLES FOR WIRES	03/09/2004	J. FREEMIRE
	GB	WEIGHT REDUCTION HOLE	03/09/2004	J. McDONALD
B0	7-9, E-H	REVISE FACE PLATE SIDE CONTOUR	9/28/04	J. McDONALD
	7-9, E-H	8X THRU FOR #10 TO 6X THRU FOR #6 FASTENER	9/28/04	J. McDONALD

QTY	DWG/PART NUMBER	DESCRIPTION	MATERIAL
		ADDITIONAL HARDWARE NEEDED FOR ASSEMBLY	
	ENGINEERED: J. POLAND	DATE: 11/28/00	DEPARTMENT OF TRANSPORTATION
	DRAWN: J. POLAND	DATE: 11/28/00	NHTSA
	CHECKED: STAFF	DATE: 4/11/02	CONTRACT NO.: DTRR 25-94-C-07010
	SCALE: 1=1	REVISION: B0	DESIGNED BY: GEFAC, INC.
	FINISH: CLEAR ANODIZED	QUANTITY FOR AN ASSEMBLY: 1	ISSUED • MANUFACTURED • TEST • SERVICE INFORMATION
	MATERIAL: 7075-T6 AL	QUANTITY FOR ENTIRE DUMMY: 1	125 ORSHAW DRIVE BOONSHIRE, MD 2713
		DRAWING TITLE: FACE PLATE	
		DRAWING NUMBER: T1FCM110	
		Page: 1/1	

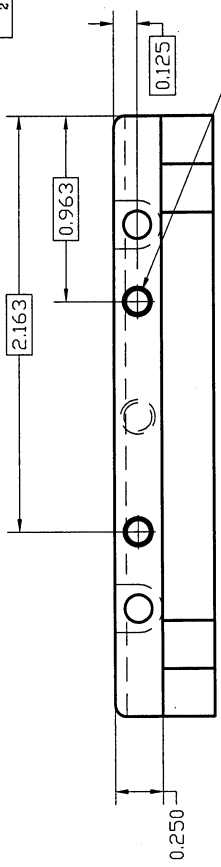
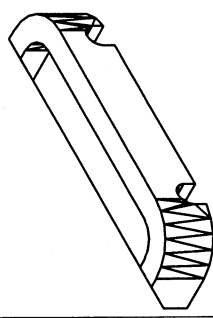
NOTE:
 ENGRAVE THE DWG. # T1FCM110 AT THE LOCATION SPECIFIED ABOVE.
 BREAK ALL SHARP EDGES

4

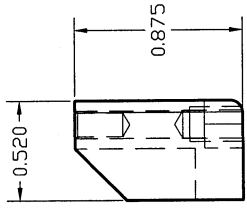
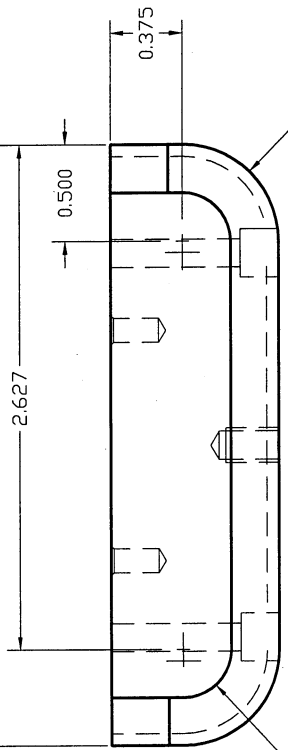
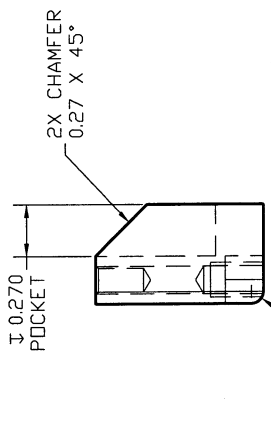
3

2

1

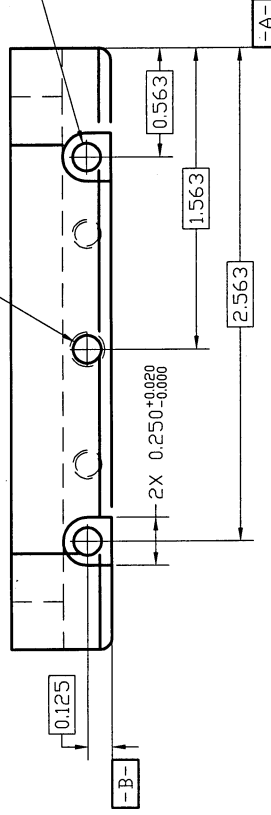


2X $\varnothing 0.124^{+0.000}$
 ± 0.0150 X 82°
 C-SINK $\varnothing 0.150$ X 82°
 [A] [B]



① #6-32STI X 0.276
 [A] [B]

2X $\varnothing 0.144$ THRU
 C-BORE $\varnothing 0.250^{-0.060}$
 ± 0.20
 [A] [B]



NOTE:

1 BREAK ALL SHARP EDGES

REVISIONS

REV. #	ZONE	DESCRIPTION	DATE	BY
1	GLOBAL	OVERALL GEOMETRY CHANGE FOR FACE PLATE	03/09/2004	J. FREEMIRE
2	GLOBAL	RELOCATE THRU AND TAPPED HOLES FOR SYMMETRY	12/15/04	J. MCDONALD

REV. #	QTY	MCM#	DWG/PART NUMBER	DESCRIPTION	MATERIAL
1	1	91752A286		6-32UNC HELICAL INSERT	18-8 SS

ADDITIONAL HARDWARE NEEDED FOR ASSEMBLY	
ENGINEERED:	J. FREEMIRE
DATE:	3/9/04
DRAWN:	J. FREEMIRE
DATE:	3/9/04
CHECKED:	STAFF
DATE:	3/9/04
SURFACE FINISH:	.xxx ± .005
SCALE:	1=1
SIZE:	A
REVISION:	2
QUANTITY FOR AN ASSEMBLY:	1
FINISH:	N/A
MATERIAL:	ACETAL

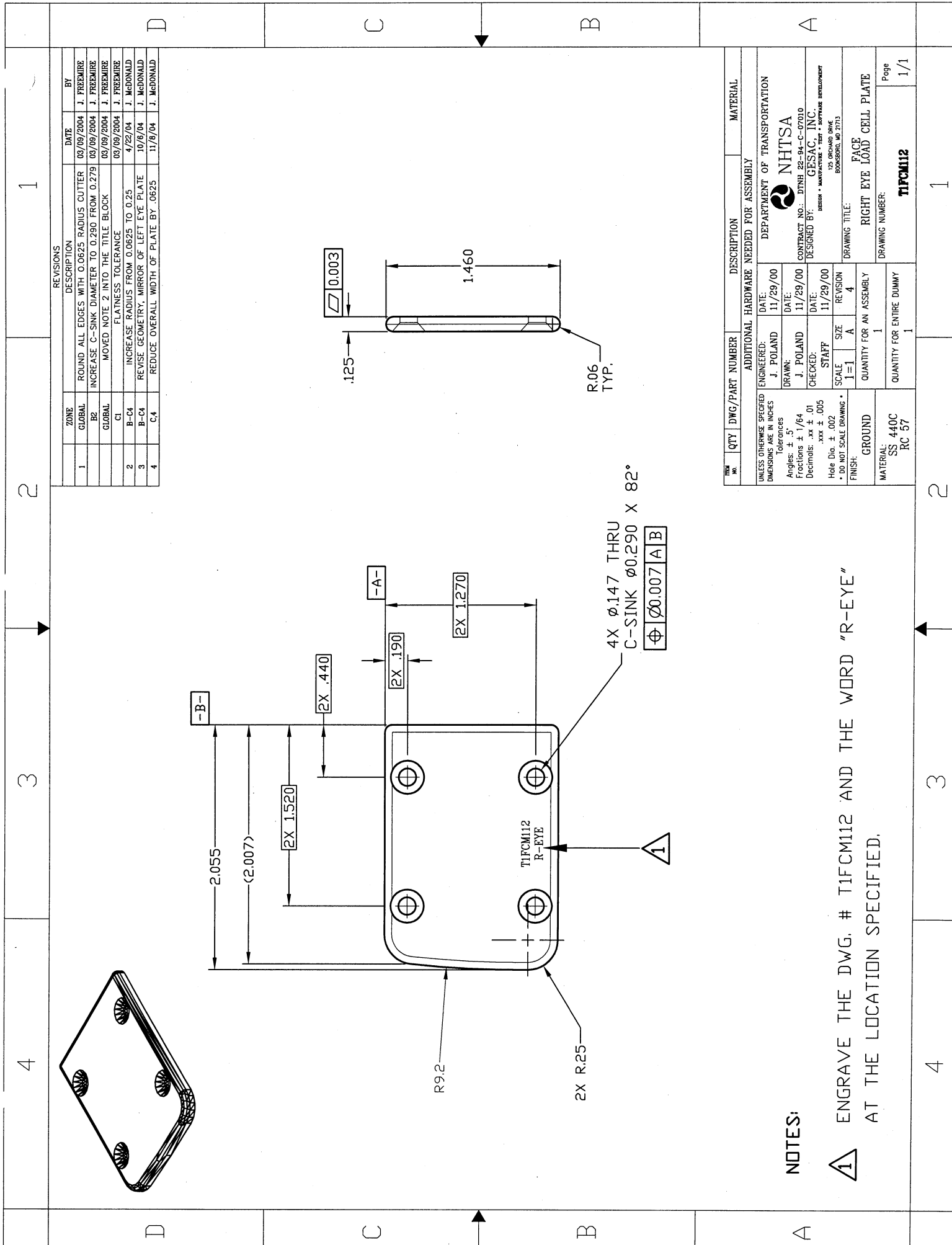
DEPARTMENT OF TRANSPORTATION	
NHTSA	
CONTRACT NO.:	DTPH 22-94-C-07010
DESIGNED BY:	GESAC, INC.
DESIGN • MANUFACTURE • TEST • SERVICE SUPPORT	
125 ORLAND DRIVE BOWERS, MD 21713	
DRAWING TITLE:	FACE
DRAWING NUMBER:	CHIN GUARD
QUANTITY FOR ENTIRE DUMMY:	1
QUANTITY FOR ENTIRE DUMMY:	1
DRAWING NUMBER:	T1FCM111
Page:	1/1

4

3

2

1



ZONE	DESCRIPTION	DATE	BY
1	GLOBAL ROUND ALL EDGES WITH 0.0625 RADIUS CUTTER	03/09/2004	J. FRECHIRE
B2	INCREASE C-SINK DIAMETER TO 0.290 FROM 0.279	03/09/2004	J. FRECHIRE
GLOBAL	MOVED NOTE 2 INTO THE TITLE BLOCK	03/09/2004	J. FRECHIRE
C1	FLATNESS TOLERANCE	03/09/2004	J. FRECHIRE
B-C4	INCREASE RADIUS FROM 0.0625 TO 0.25	4/22/04	J. McDONALD
B-C4	REVISE GEOMETRY, MIRROR OF LEFT EYE PLATE	10/6/04	J. McDONALD
C4	REDUCE OVERALL WIDTH OF PLATE BY .0625	11/8/04	J. McDONALD

QTY	DWG/PART NUMBER	DESCRIPTION	MATERIAL
1	TIFCM112	RIGHT EYE LOAD CELL PLATE	SS 440C RC 57

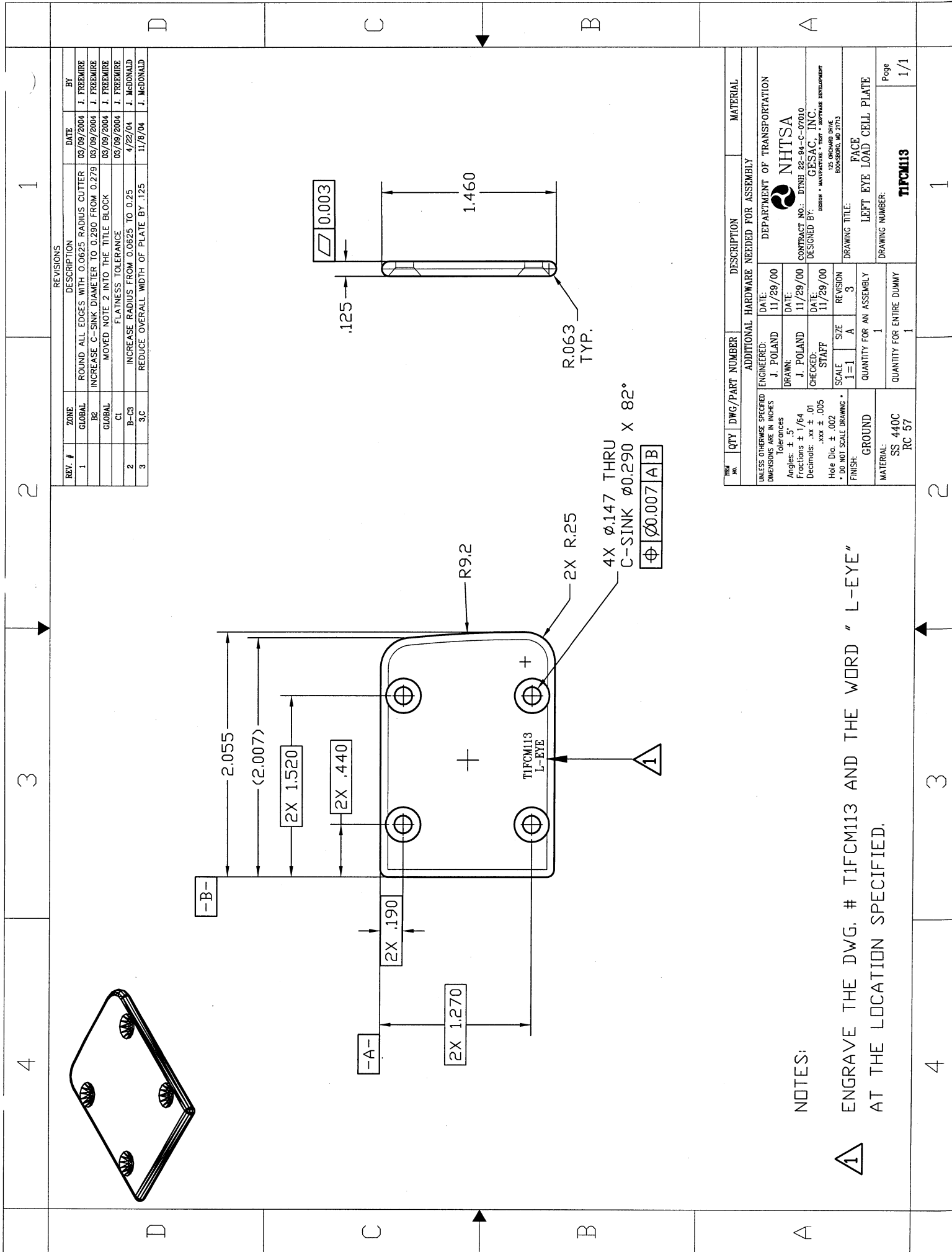
ENGINEERED:	DATE:	DEPARTMENT OF TRANSPORTATION
J. POLAND	11/29/00	NHTSA
DRAWN:	DATE:	CONTRACT NO.: DTNH 22-94-C-07010
J. POLAND	11/29/00	DESIGNED BY: GESAC, INC.
CHECKED:	DATE:	DESIGN • MANUFACTURE • TEST • SOFTWARE DEVELOPMENT
STAFF	11/29/00	125 ORCHARD DRIVE
SCALE	REVISION	BOONSBORO, MD 27113
1=1	4	DRAWING TITLE: FACE
QUANTITY FOR AN ASSEMBLY	1	RIGHT EYE LOAD CELL PLATE
QUANTITY FOR ENTIRE DUMMY	1	DRAWING NUMBER: TIFCM112

NOTES:

1 ENGRAVE THE DWG. # TIFCM112 AND THE WORD "R-EYE" AT THE LOCATION SPECIFIED.

4 3 2 1

4 3 2 1



REV. #	ZONE	DESCRIPTION	DATE	BY
1	GLOBAL	ROUND ALL EDGES WITH 0.0625 RADIUS CUTTER	03/09/2004	J. FREEMIRE
	B2	INCREASE C-SINK DIAMETER TO 0.290 FROM 0.279	03/09/2004	J. FREEMIRE
	GLOBAL	MOVED NOTE 2 INTO THE TITLE BLOCK	03/09/2004	J. FREEMIRE
	C1	FLATNESS TOLERANCE	03/09/2004	J. FREEMIRE
2	B-C3	INCREASE RADIUS FROM 0.0625 TO 0.25	4/22/04	J. McDONALD
3	3C	REDUCE OVERALL WIDTH OF PLATE BY .125	11/9/04	J. McDONALD

ITEM NO.	QTY	DWG/PART NUMBER	DESCRIPTION	MATERIAL
ADDITIONAL HARDWARE NEEDED FOR ASSEMBLY				
UNLESS OTHERWISE SPECIFIED DIMENSIONS ARE IN INCHES				
ENGINEERED:	J. POLAND	DATE:	11/29/00	
DRAWN:	J. POLAND	DATE:	11/29/00	
CHECKED:	STAFF	DATE:	11/29/00	
Hole Dia. ± .002	SCALE	SIZE	REVISION	
* DO NOT SCALE DRAWING *	1=1	A	3	
FINISH:	GROUND			
QUANTITY FOR AN ASSEMBLY 1				
QUANTITY FOR ENTIRE DUMMY 1				
MATERIAL: SS 440C RC 57				

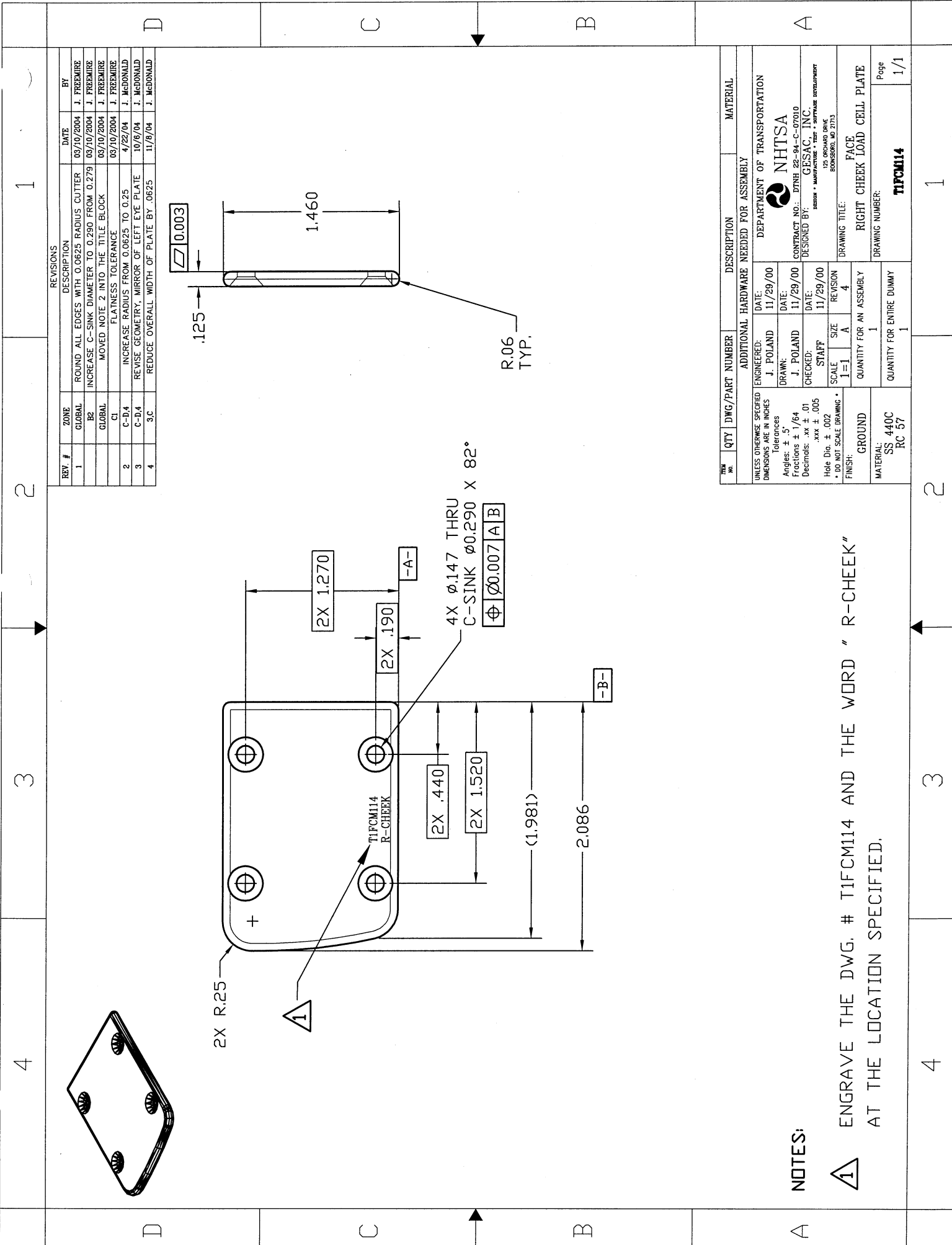
NOTES:

1 ENGRAVE THE DWG. # TIFCM113 AND THE WORD " L-EYE " AT THE LOCATION SPECIFIED.

REVISIONS

DEPARTMENT OF TRANSPORTATION
 NHTSA
 CONTRACT NO.: DTNH 22-94-C-07010
 DESIGNED BY: GFSAC, INC.
 DESIGN • MANUFACTURE • TEST • SOFTWARE DEVELOPMENT
 125 ORCHARD DRIVE
 BOWERSVILLE, MD 21713

DRAWING TITLE: FACE LEFT EYE LOAD CELL PLATE
 DRAWING NUMBER: TIFCM113
 Page 1/1

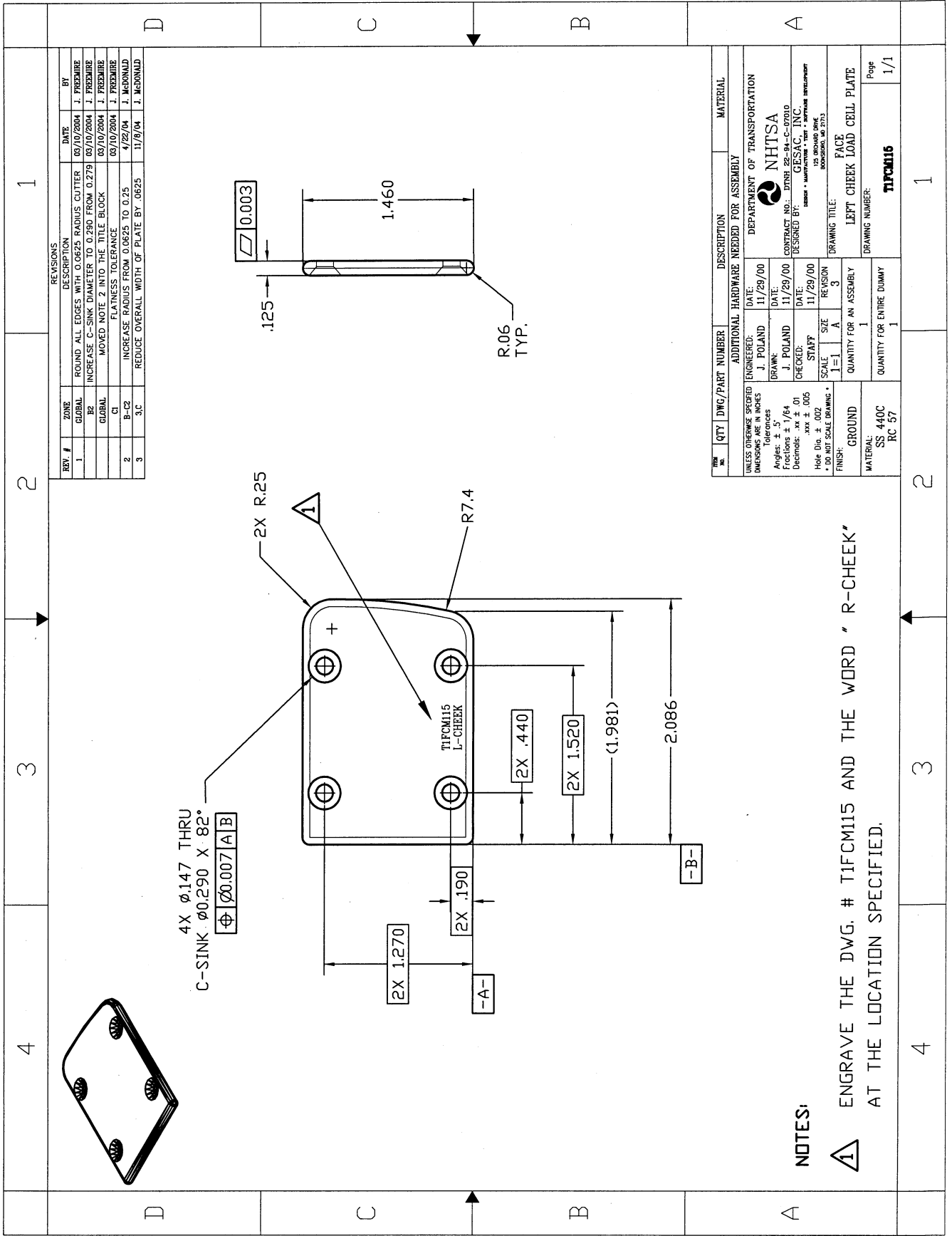


REV. #	ZONE	DESCRIPTION	DATE	BY
1	GLOBAL	ROUND ALL EDGES WITH 0.0625 RADIUS. CLUTTER	03/10/2004	J. FREEMIRE
	B2	INCREASE C-SINK DIAMETER TO 0.290 FROM 0.275	03/10/2004	J. FREEMIRE
	GLOBAL	MOVED NOTE 2 INTO THE TITLE BLOCK	03/10/2004	J. FREEMIRE
	C1	FLATNESS TOLERANCE	03/10/2004	J. FREEMIRE
2	C-D4	INCREASE RADIUS FROM 0.0625 TO 0.25	4/22/04	J. McDONALD
3	C-D4	REVISE GEOMETRY. MIRROR OF LEFT EYE PLATE	10/8/04	J. McDONALD
4	3.C	REDUCE OVERALL WIDTH OF PLATE BY .0625	11/8/04	J. McDONALD

QTY	DWG/PART NUMBER	DESCRIPTION	MATERIAL
		ADDITIONAL HARDWARE NEEDED FOR ASSEMBLY	
		DEPARTMENT OF TRANSPORTATION	
		NHTSA	
		CONTRACT NO.: DTNH 22-94-C-07010	
		DESIGNED BY: GESAC, INC.	
		BASED ON MANUFACTURE FOR SUPPLEMENTAL AGREEMENT	
		125 BUCKINGHAM DRIVE	
		ROCKFORD, IL 61073	
		DRAWING TITLE: FACE	
		RIGHT CHEEK LOAD CELL PLATE	
		DRAWING NUMBER:	
		TIFCM114	
		QUANTITY FOR ENTIRE DUMMY	
		1	
		QUANTITY FOR AN ASSEMBLY	
		1	
		GROUND	
		SS 440C	
		RC 57	
		FINISH:	
		DO NOT SCALE DRAWING	
		Hole Dia. ± .002	
		Decimals: .xx ± .01	
		Fractions: 1/64	
		Angles: ± .5°	
		Tolerances	
		UNLESS OTHERWISE SPECIFIED	
		DIMENSIONS ARE IN INCHES	
		ENGINEERED:	
		J. POLAND	
		DATE: 11/29/00	
		DRAWN:	
		J. POLAND	
		DATE: 11/29/00	
		CHECKED:	
		STAFF	
		DATE: 11/29/00	
		SCALE:	
		1=1	
		SIZE:	
		A	
		REVISION:	
		4	

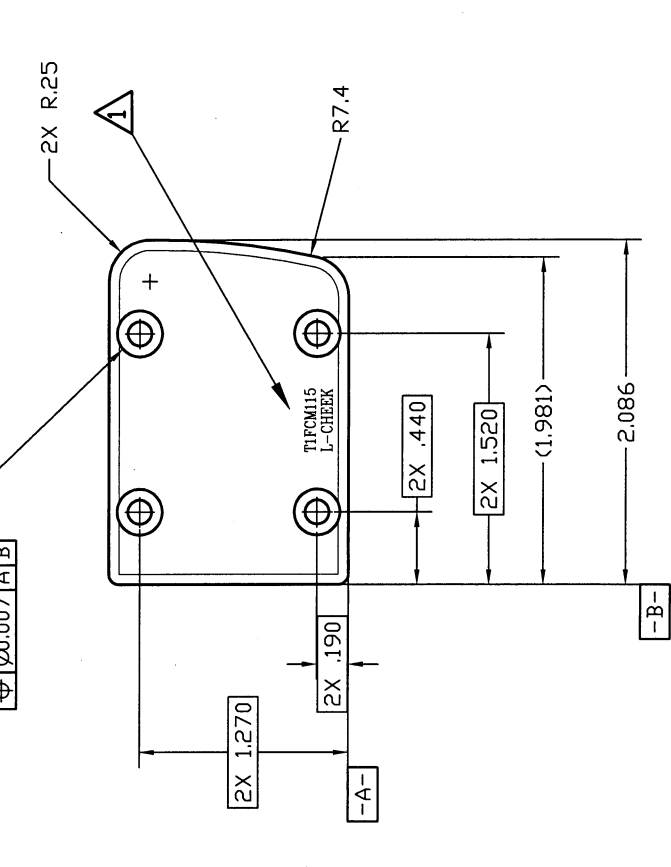
NOTES:

1 ENGRAVE THE DWG. # TIFCM114 AND THE WORD " R-CHEEK " AT THE LOCATION SPECIFIED.



REV. #	ZONE	DESCRIPTION	DATE	BY
1	GLOBAL	ROUND ALL EDGES WITH 0.0625 RADIUS CUTTER	03/10/2004	J. FREEMIRE
	B2	INCREASE C-SINK DIAMETER TO 0.290 FROM 0.279	03/10/2004	J. FREEMIRE
	GLOBAL	MOVED NOTE 2 INTO THE TITLE BLOCK	03/10/2004	J. FREEMIRE
	C1	FLATNESS TOLERANCE	03/10/2004	J. FREEMIRE
2	B-C2	INCREASE RADIUS FROM 0.0625 TO 0.25	1/22/04	J. McDONALD
3	3C	REDUCE OVERALL WIDTH OF PLATE BY .0625	11/9/04	J. McDONALD

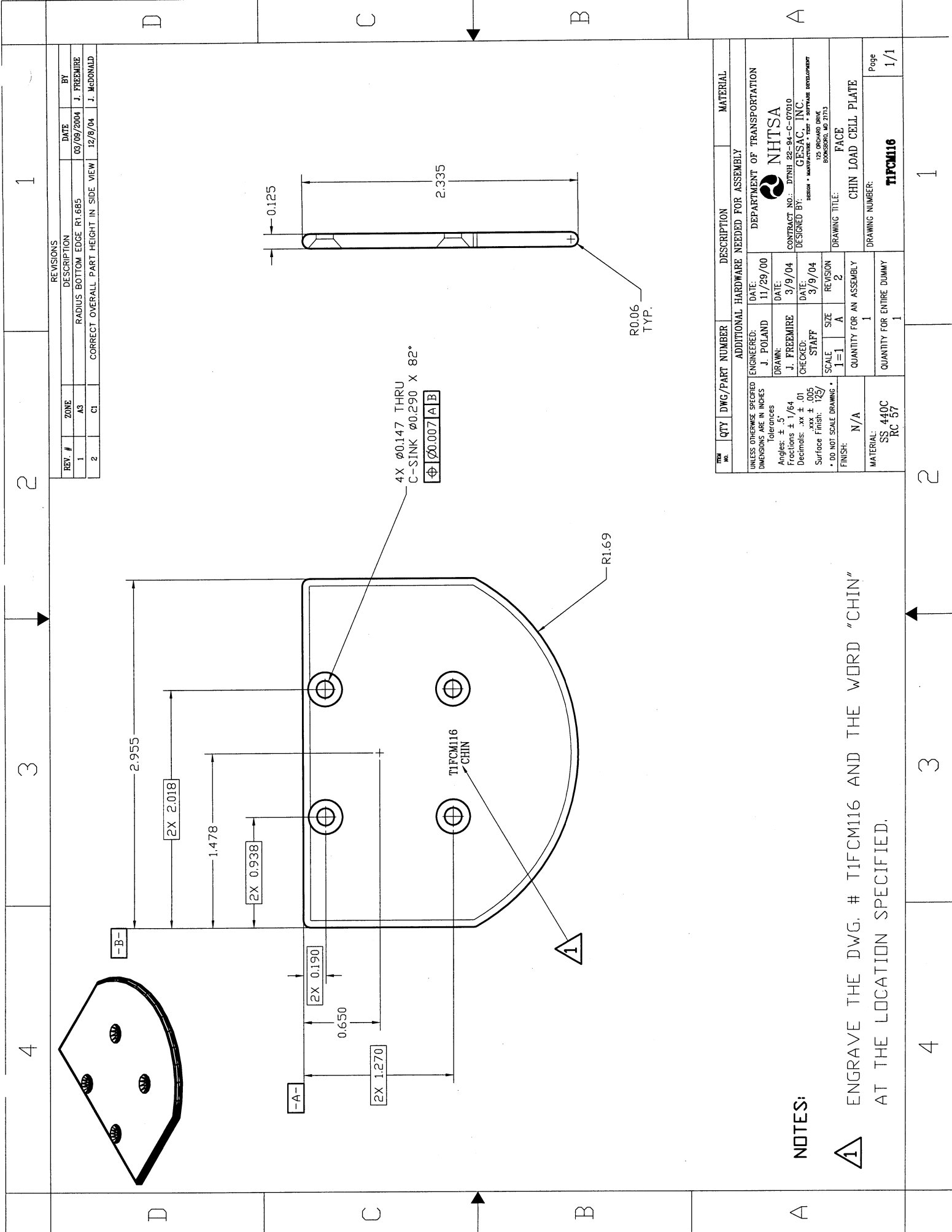
4X ϕ .147 THRU
 C-SINK ϕ 0.290 X .82
 ϕ 0.007 | A | B



ITEM NO.	QTY	DWG/PART NUMBER	DESCRIPTION	MATERIAL
ADDITIONAL HARDWARE NEEDED FOR ASSEMBLY				
UNLESS OTHERWISE SPECIFIED ENGINEERED: DATE: 11/29/00				
DIMENSIONS ARE IN INCHES J. POLAND				
Tolerances				
Angles: \pm 5				
Fractions: \pm /64				
Decimals: .xx \pm .01				
Hole Dia: \pm .002				
* DO NOT SCALE DRAWING *				
FINISH: GROUND				
QUANTITY FOR AN ASSEMBLY				
SCALE: SIZE REVISION				
1=1 A 3				
DRAWING TITLE: FACE LEFT CHEEK LOAD CELL PLATE				
DRAWING NUMBER: TIFCM115				
Page 1/1				

NOTES:

A ENGRAVE THE DWG. # TIFCM115 AND THE WORD " R-CHEEK" AT THE LOCATION SPECIFIED.



REV. #	ZONE	DESCRIPTION	DATE	BY
1	A3	RADIUS BOTTOM EDGE R1.685	03/09/2004	J. FREEMIRE
2	C1	CORRECT OVERALL PART HEIGHT IN SIDE VIEW	12/8/04	J. McDONALD

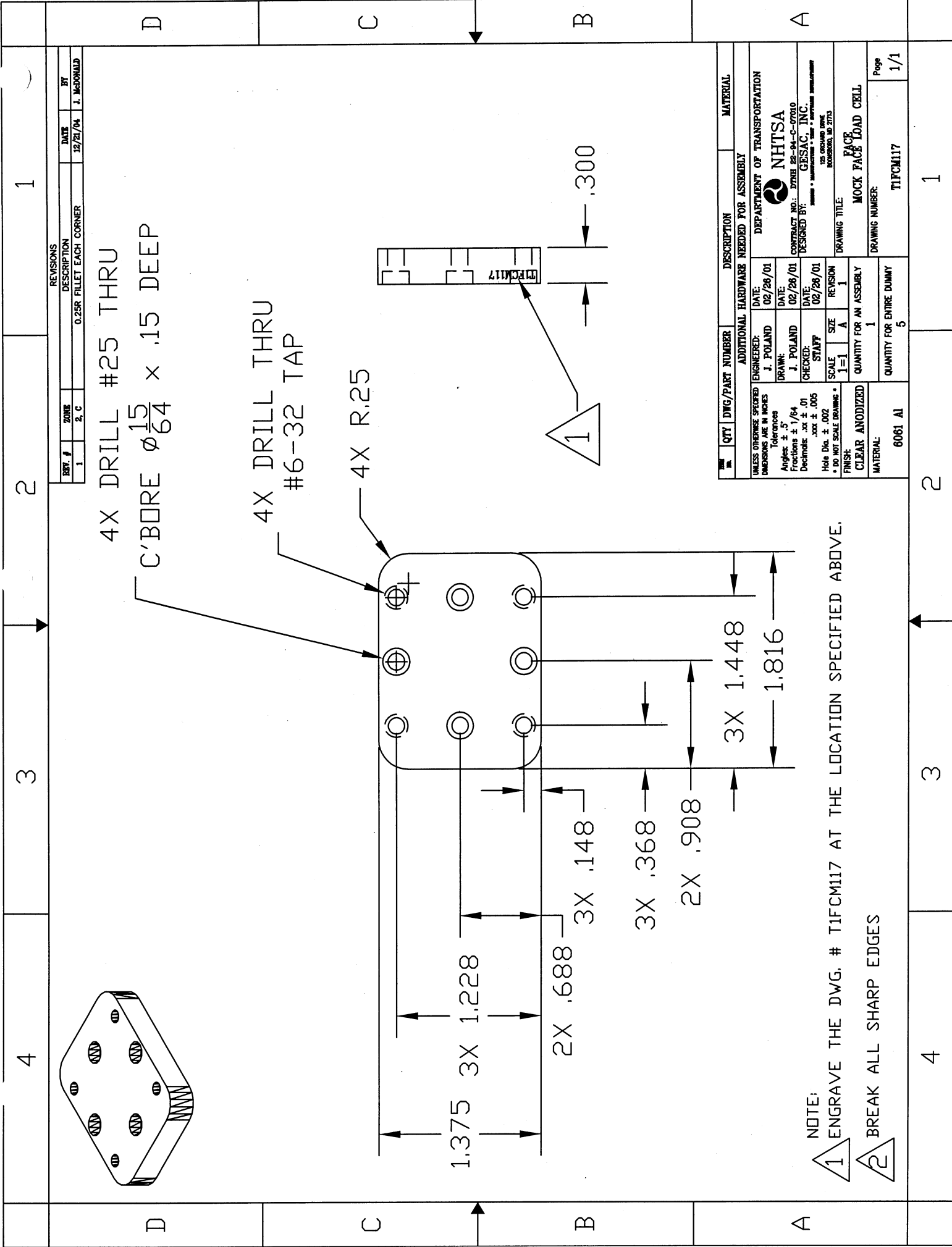
ITEM NO.	QTY	DWG/PART NUMBER	DESCRIPTION	MATERIAL
ADDITIONAL HARDWARE NEEDED FOR ASSEMBLY				
UNLESS OTHERWISE SPECIFIED DIMENSIONS ARE IN INCHES		ENGINEERED:	DATE:	
Tolerances		J. POLAND	11/29/00	
Angles: ± .5 / 64		DRAWN:	DATE:	
Fractions: ± 1 / 64		J. FREEMIRE	3/9/04	
Decimals: .xx ± .005		CHECKED:	DATE:	
Surface Finish: 125		STAFF	3/9/04	
FINISH: N/A		SCALE	SIZE	REVISION
		1=1	A	2
		* DO NOT SCALE DRAWING *		
MATERIAL:		DRAWING TITLE:		
SS 440C		FACE		
RC 57		CHIN LOAD CELL PLATE		
QUANTITY FOR AN ASSEMBLY		DRAWING NUMBER:		
1		T1FCM116		
QUANTITY FOR ENTIRE DUMMY		Page		
1		1/1		

NOTES:

1 ENGRAVE THE DWG. # T1FCM116 AND THE WORD "CHIN" AT THE LOCATION SPECIFIED.

4 3 2 1

4 3 2 1



REVISIONS		
REV. #	ZONE	DESCRIPTION
1	2, C	0.25R FILLET EACH CORNER
		DATE: 12/21/04
		BY: J. McDONALD

4X DRILL #25 THRU
C'BORE $\phi \frac{15}{64} \times .15$ DEEP

4X DRILL THRU
#6-32 TAP

4X R.25

QTY	DWG/PART NUMBER	DESCRIPTION	MATERIAL
		ADDITIONAL HARDWARE NEEDED FOR ASSEMBLY	
		DEPARTMENT OF TRANSPORTATION	
		NHTSA	
		CONTRACT NO.: DTMB 25-04-C-0000	
		DESIGNED BY: GESSAC, INC.	
		125 RESUME DRG	
		ROCKWELL, MO 2713	
		DRAWING TITLE: FACE	
		MOCK FACE LOAD CELL	
		DRAWING NUMBER: TIFCM117	Page 1/1
		QUANTITY FOR AN ASSEMBLY: 1	
		QUANTITY FOR ENTIRE DUMMY: 5	
		MATERIAL: 6061 AL	

NOTE:
1 ENGRAVE THE DWG. # TIFCM117 AT THE LOCATION SPECIFIED ABOVE.
2 BREAK ALL SHARP EDGES

16	15	14	13	12	11	10	9	8	7	6	5	4	3	2	1																																																																																																																																																																																																																																					
J	I	H	G	F	E	D	C	B	A																																																																																																																																																																																																																																											
<table border="1"> <tr> <td>REV. #</td><td>ZONE</td><td>DESCRIPTION</td><td>DATE</td><td>BY</td> </tr> <tr> <td>00</td><td>GLOBAL</td><td>CHANGE CURVATURE AND THRU HOLES</td><td>10/7/04</td><td>J. McDONALD</td> </tr> </table>															REV. #	ZONE	DESCRIPTION	DATE	BY	00	GLOBAL	CHANGE CURVATURE AND THRU HOLES	10/7/04	J. McDONALD																																																																																																																																																																																																																												
REV. #	ZONE	DESCRIPTION	DATE	BY																																																																																																																																																																																																																																																
00	GLOBAL	CHANGE CURVATURE AND THRU HOLES	10/7/04	J. McDONALD																																																																																																																																																																																																																																																
<table border="1"> <tr> <th>NO.</th><th>QTY</th><th>DWG/PART NUMBER</th><th>DESCRIPTION</th><th>MATERIAL</th> </tr> <tr> <td colspan="5"> ADDITIONAL HARDWARE NEEDED FOR ASSEMBLY </td> </tr> <tr> <td colspan="5"> UNLESS OTHERWISE SPECIFIED DIMENSIONS ARE IN INCHES </td> </tr> <tr> <td colspan="5"> Tolerances: Angles ± .5° Fractions ± 1/64 Decimals .xx ± .01 Hole Dia. ± .002 </td> </tr> <tr> <td colspan="5"> FINISH: CLEAR ANODIZED </td> </tr> <tr> <td colspan="5"> DO NOT SCALE DRAWINGS </td> </tr> <tr> <td colspan="5"> SCALE: 2=1 </td> </tr> <tr> <td colspan="5"> DRAWN: J. FREEMORE DATE: 2/9/04 </td> </tr> <tr> <td colspan="5"> CHECKED: J. POLAND DATE: 2/09/04 </td> </tr> <tr> <td colspan="5"> DESIGNED BY: J. McDONALD </td> </tr> <tr> <td colspan="5"> CONTRACT NO.: DTMB 28-94-C-07010 </td> </tr> <tr> <td colspan="5"> DEPARTMENT OF TRANSPORTATION </td> </tr> <tr> <td colspan="5"> NHTSA </td> </tr> <tr> <td colspan="5"> DRAWING TITLE: FACE PLATE SPACER R </td> </tr> <tr> <td colspan="5"> DRAWING NUMBER: TIFCM119 </td> </tr> <tr> <td colspan="5"> QUANTITY FOR AN ASSEMBLY: 1 </td> </tr> <tr> <td colspan="5"> QUANTITY FOR ENTIRE DUMMY: 1 </td> </tr> <tr> <td colspan="5"> MATERIAL: 6061-T6 </td> </tr> <tr> <td colspan="5"> FINISH: CLEAR ANODIZED </td> </tr> <tr> <td colspan="5"> DO NOT SCALE DRAWINGS </td> </tr> <tr> <td colspan="5"> SCALE: 2=1 </td> </tr> <tr> <td colspan="5"> DRAWN: J. FREEMORE DATE: 2/9/04 </td> </tr> <tr> <td colspan="5"> CHECKED: J. POLAND DATE: 2/09/04 </td> </tr> <tr> <td colspan="5"> DESIGNED BY: J. McDONALD </td> </tr> <tr> <td colspan="5"> CONTRACT NO.: DTMB 28-94-C-07010 </td> </tr> <tr> <td colspan="5"> DEPARTMENT OF TRANSPORTATION </td> </tr> <tr> <td colspan="5"> NHTSA </td> </tr> <tr> <td colspan="5"> DRAWING TITLE: FACE PLATE SPACER R </td> </tr> <tr> <td colspan="5"> DRAWING NUMBER: TIFCM119 </td> </tr> <tr> <td colspan="5"> QUANTITY FOR AN ASSEMBLY: 1 </td> </tr> <tr> <td colspan="5"> QUANTITY FOR ENTIRE DUMMY: 1 </td> </tr> <tr> <td colspan="5"> MATERIAL: 6061-T6 </td> </tr> <tr> <td colspan="5"> FINISH: CLEAR ANODIZED </td> </tr> <tr> <td colspan="5"> DO NOT SCALE DRAWINGS </td> </tr> <tr> <td colspan="5"> SCALE: 2=1 </td> </tr> <tr> <td colspan="5"> DRAWN: J. FREEMORE DATE: 2/9/04 </td> </tr> <tr> <td colspan="5"> CHECKED: J. POLAND DATE: 2/09/04 </td> </tr> <tr> <td colspan="5"> DESIGNED BY: J. McDONALD </td> </tr> <tr> <td colspan="5"> CONTRACT NO.: DTMB 28-94-C-07010 </td> </tr> <tr> <td colspan="5"> DEPARTMENT OF TRANSPORTATION </td> </tr> <tr> <td colspan="5"> NHTSA </td> </tr> <tr> <td colspan="5"> DRAWING TITLE: FACE PLATE SPACER R </td> </tr> <tr> <td colspan="5"> DRAWING NUMBER: TIFCM119 </td> </tr> <tr> <td colspan="5"> QUANTITY FOR AN ASSEMBLY: 1 </td> </tr> <tr> <td colspan="5"> QUANTITY FOR ENTIRE DUMMY: 1 </td> </tr> <tr> <td colspan="5"> MATERIAL: 6061-T6 </td> </tr> </table>															NO.	QTY	DWG/PART NUMBER	DESCRIPTION	MATERIAL	ADDITIONAL HARDWARE NEEDED FOR ASSEMBLY					UNLESS OTHERWISE SPECIFIED DIMENSIONS ARE IN INCHES					Tolerances: Angles ± .5° Fractions ± 1/64 Decimals .xx ± .01 Hole Dia. ± .002					FINISH: CLEAR ANODIZED					DO NOT SCALE DRAWINGS					SCALE: 2=1					DRAWN: J. FREEMORE DATE: 2/9/04					CHECKED: J. POLAND DATE: 2/09/04					DESIGNED BY: J. McDONALD					CONTRACT NO.: DTMB 28-94-C-07010					DEPARTMENT OF TRANSPORTATION					NHTSA					DRAWING TITLE: FACE PLATE SPACER R					DRAWING NUMBER: TIFCM119					QUANTITY FOR AN ASSEMBLY: 1					QUANTITY FOR ENTIRE DUMMY: 1					MATERIAL: 6061-T6					FINISH: CLEAR ANODIZED					DO NOT SCALE DRAWINGS					SCALE: 2=1					DRAWN: J. FREEMORE DATE: 2/9/04					CHECKED: J. POLAND DATE: 2/09/04					DESIGNED BY: J. McDONALD					CONTRACT NO.: DTMB 28-94-C-07010					DEPARTMENT OF TRANSPORTATION					NHTSA					DRAWING TITLE: FACE PLATE SPACER R					DRAWING NUMBER: TIFCM119					QUANTITY FOR AN ASSEMBLY: 1					QUANTITY FOR ENTIRE DUMMY: 1					MATERIAL: 6061-T6					FINISH: CLEAR ANODIZED					DO NOT SCALE DRAWINGS					SCALE: 2=1					DRAWN: J. FREEMORE DATE: 2/9/04					CHECKED: J. POLAND DATE: 2/09/04					DESIGNED BY: J. McDONALD					CONTRACT NO.: DTMB 28-94-C-07010					DEPARTMENT OF TRANSPORTATION					NHTSA					DRAWING TITLE: FACE PLATE SPACER R					DRAWING NUMBER: TIFCM119					QUANTITY FOR AN ASSEMBLY: 1					QUANTITY FOR ENTIRE DUMMY: 1					MATERIAL: 6061-T6				
NO.	QTY	DWG/PART NUMBER	DESCRIPTION	MATERIAL																																																																																																																																																																																																																																																
ADDITIONAL HARDWARE NEEDED FOR ASSEMBLY																																																																																																																																																																																																																																																				
UNLESS OTHERWISE SPECIFIED DIMENSIONS ARE IN INCHES																																																																																																																																																																																																																																																				
Tolerances: Angles ± .5° Fractions ± 1/64 Decimals .xx ± .01 Hole Dia. ± .002																																																																																																																																																																																																																																																				
FINISH: CLEAR ANODIZED																																																																																																																																																																																																																																																				
DO NOT SCALE DRAWINGS																																																																																																																																																																																																																																																				
SCALE: 2=1																																																																																																																																																																																																																																																				
DRAWN: J. FREEMORE DATE: 2/9/04																																																																																																																																																																																																																																																				
CHECKED: J. POLAND DATE: 2/09/04																																																																																																																																																																																																																																																				
DESIGNED BY: J. McDONALD																																																																																																																																																																																																																																																				
CONTRACT NO.: DTMB 28-94-C-07010																																																																																																																																																																																																																																																				
DEPARTMENT OF TRANSPORTATION																																																																																																																																																																																																																																																				
NHTSA																																																																																																																																																																																																																																																				
DRAWING TITLE: FACE PLATE SPACER R																																																																																																																																																																																																																																																				
DRAWING NUMBER: TIFCM119																																																																																																																																																																																																																																																				
QUANTITY FOR AN ASSEMBLY: 1																																																																																																																																																																																																																																																				
QUANTITY FOR ENTIRE DUMMY: 1																																																																																																																																																																																																																																																				
MATERIAL: 6061-T6																																																																																																																																																																																																																																																				
FINISH: CLEAR ANODIZED																																																																																																																																																																																																																																																				
DO NOT SCALE DRAWINGS																																																																																																																																																																																																																																																				
SCALE: 2=1																																																																																																																																																																																																																																																				
DRAWN: J. FREEMORE DATE: 2/9/04																																																																																																																																																																																																																																																				
CHECKED: J. POLAND DATE: 2/09/04																																																																																																																																																																																																																																																				
DESIGNED BY: J. McDONALD																																																																																																																																																																																																																																																				
CONTRACT NO.: DTMB 28-94-C-07010																																																																																																																																																																																																																																																				
DEPARTMENT OF TRANSPORTATION																																																																																																																																																																																																																																																				
NHTSA																																																																																																																																																																																																																																																				
DRAWING TITLE: FACE PLATE SPACER R																																																																																																																																																																																																																																																				
DRAWING NUMBER: TIFCM119																																																																																																																																																																																																																																																				
QUANTITY FOR AN ASSEMBLY: 1																																																																																																																																																																																																																																																				
QUANTITY FOR ENTIRE DUMMY: 1																																																																																																																																																																																																																																																				
MATERIAL: 6061-T6																																																																																																																																																																																																																																																				
FINISH: CLEAR ANODIZED																																																																																																																																																																																																																																																				
DO NOT SCALE DRAWINGS																																																																																																																																																																																																																																																				
SCALE: 2=1																																																																																																																																																																																																																																																				
DRAWN: J. FREEMORE DATE: 2/9/04																																																																																																																																																																																																																																																				
CHECKED: J. POLAND DATE: 2/09/04																																																																																																																																																																																																																																																				
DESIGNED BY: J. McDONALD																																																																																																																																																																																																																																																				
CONTRACT NO.: DTMB 28-94-C-07010																																																																																																																																																																																																																																																				
DEPARTMENT OF TRANSPORTATION																																																																																																																																																																																																																																																				
NHTSA																																																																																																																																																																																																																																																				
DRAWING TITLE: FACE PLATE SPACER R																																																																																																																																																																																																																																																				
DRAWING NUMBER: TIFCM119																																																																																																																																																																																																																																																				
QUANTITY FOR AN ASSEMBLY: 1																																																																																																																																																																																																																																																				
QUANTITY FOR ENTIRE DUMMY: 1																																																																																																																																																																																																																																																				
MATERIAL: 6061-T6																																																																																																																																																																																																																																																				
16	15	14	13	12	11	10	9	8	7	6	5	4	3	2	1																																																																																																																																																																																																																																					

△ BREAK ALL SHARP EDGES

NTS

3/104

