

Table XX-1
ORAL CAVITY AND PHARYNX CANCER (Invasive)

TRENDS IN SEER INCIDENCE^a AND U.S. MORTALITY^b USING THE JOINPOINT REGRESSION PROGRAM, 1975-2002
WITH UP TO THREE JOINPOINTS BY RACE AND SEX

		<u>Joinpoint Segment 1</u>		<u>Joinpoint Segment 2</u>		<u>Joinpoint Segment 3</u>		<u>Joinpoint Segment 4</u>	
		Year	APC	Year	APC	Year	APC	Year	APC
<u>SEER Cancer Incidence^a</u>									
All Races	Male and Female	1975-1981	0.8	1981-2002	-1.2 ^c				
All Races	Male	1975-1983	-0.1	1983-2002	-1.5 ^c				
All Races	Female	1975-1980	2.6 ^c	1980-2002	-1.0 ^c				
White	Male and Female	1975-1983	0.0	1983-2002	-1.1 ^c				
White	Male	1975-2002	-1.2 ^c						
White	Female	1975-1981	2.0 ^c	1981-2002	-0.9 ^c				
Black	Male and Female	1975-1984	2.4 ^c	1984-2002	-2.5 ^c				
Black	Male	1975-1987	1.8 ^c	1987-2002	-3.1 ^c				
Black	Female	1975-2002	-1.5 ^c						
<u>SEER Delay-Adjusted Incidence^a</u>									
All Races	Male and Female	1975-1981	0.7	1981-2002	-1.1 ^c				
All Races	Male	1975-2002	-1.2 ^c						
All Races	Female	1975-1980	2.5	1980-2002	-0.9 ^c				
White	Male and Female	1975-2002	-0.8 ^c						
White	Male	1975-2002	-1.1 ^c						
White	Female	1975-1981	1.9	1981-2002	-0.8 ^c				
Black	Male and Female	1975-1984	2.3 ^c	1984-2002	-2.4 ^c				
Black	Male	1975-1987	1.8 ^c	1987-2002	-2.9 ^c				
Black	Female	1975-2002	-1.4 ^c						
<u>U.S. Cancer Mortality^b</u>									
All Races	Male and Female	1975-1979	-0.4	1979-1993	-1.7 ^c	1993-2002	-2.5 ^c		
All Races	Male	1975-1991	-1.8 ^c	1991-2002	-2.6 ^c				
All Races	Female	1975-1990	-0.9 ^c	1990-2002	-2.4 ^c				
White	Male and Female	1975-2002	-1.9 ^c						
White	Male	1975-2002	-2.2 ^c						
White	Female	1975-1990	-1.0 ^c	1990-2002	-2.3 ^c				
Black	Male and Female	1975-1980	3.1 ^c	1980-1993	-1.4 ^c	1993-2002	-4.5 ^c		
Black	Male	1975-1980	3.7 ^c	1980-1993	-1.4 ^c	1993-2002	-4.8 ^c		
Black	Female	1975-1994	-0.6 ^c	1994-2002	-4.5 ^c				

Joinpoint Regression Program Version 3.0, April 2005, National Cancer Institute. (<http://srab.cancer.gov/joinpoint/>).

The APC is the Annual Percent Change based on rates age-adjusted to the 2000 US Std Population (19 age groups - Census P25-1130).

^a Trends are from the SEER 9 areas.

^b Trends are from the NCHS public use data file for the total US.

^c The APC is significantly different from zero (p<.05).

Table XX-2
ORAL CAVITY AND PHARYNX CANCER (Invasive)SEER INCIDENCE RATES, AGE-ADJUSTED AND AGE-SPECIFIC RATES^a, BY RACE AND SEX

	All Races			Whites			Blacks		
	Total	Males	Females	Total	Males	Females	Total	Males	Females
<u>AGE-ADJUSTED RATES</u>									
YEAR OF DIAGNOSIS:									
1975	13.2	21.2	7.1	13.3	21.7	6.9	13.4	20.2	8.2
1976	13.3	21.0	7.4	13.2	21.0	7.4	15.1	23.8	8.3
1977	12.7	20.1	7.0	12.6	19.8	7.0	14.5	23.9	6.8
1978	13.4	20.9	7.7	13.2	20.8	7.6	15.8	25.8	8.1
1979	14.0	21.9	8.0	13.7	21.6	7.7	18.4	28.2	10.6
1980	13.3	20.3	7.9	13.0	20.0	7.6	16.8	25.4	9.6
1981	13.6	20.8	7.9	13.4	20.5	7.9	16.7	28.2	7.5
1982	13.3	20.3	7.9	13.1	19.9	7.8	17.1	27.4	8.9
1983	13.3	21.2	7.2	13.3	21.2	7.3	16.1	26.0	8.3
1984	13.5	20.8	7.9	13.0	20.1	7.6	18.9	30.0	10.1
1985	13.3	19.8	8.2	13.2	19.6	8.3	16.0	25.7	8.5
1986	12.5	19.1	7.2	12.3	18.8	7.3	16.1	28.0	7.0
1987	13.2	20.5	7.5	13.1	20.1	7.7	16.8	30.0	6.9
1988	12.1	18.1	7.3	11.7	17.6	7.1	16.4	25.6	9.1
1989	12.1	18.2	7.3	11.8	17.6	7.3	15.7	27.0	7.0
1990	12.6	19.4	7.3	12.4	18.8	7.4	16.1	28.0	6.9
1991	12.2	18.3	7.2	12.1	18.1	7.3	14.5	23.7	7.4
1992	12.0	18.3	6.9	11.8	18.0	6.9	14.8	25.1	6.9
1993	12.4	18.7	7.3	12.2	18.4	7.2	15.5	25.0	8.0
1994	11.7	17.7	6.8	11.4	16.8	6.9	15.8	26.8	7.1
1995	11.5	16.9	7.2	11.5	16.7	7.3	13.5	22.5	6.7
1996	11.7	17.7	7.0	11.4	17.1	6.9	14.8	24.2	7.5
1997	11.5	17.3	6.8	11.5	17.1	6.9	11.5	18.4	6.2
1998	11.2	16.6	6.7	11.2	16.3	6.9	12.9	22.3	6.2
1999	10.5	15.5	6.4	10.4	15.3	6.3	11.5	19.5	5.6
2000	10.7	16.0	6.3	10.7	15.6	6.4	11.6	20.5	4.9
2001	10.6	15.2	6.8	10.7	15.2	6.8	11.9	18.7	6.9
2002	10.8	15.9	6.5	11.0	16.0	6.6	10.9	16.7	6.4
<u>AGE-ADJUSTED RATES, 1998-2002</u>									
AGE AT DIAGNOSIS:									
All ages	10.8	15.8	6.5	10.8	15.7	6.6	11.8	19.5	6.0
Under 65	6.4	9.4	3.6	6.2	9.1	3.4	8.2	13.0	4.2
65 and over	41.0	60.5	27.1	42.2	61.6	28.4	36.2	64.2	18.5
All ages(IARC world std) ^b	7.7	11.2	4.5	7.6	11.0	4.6	8.8	14.5	4.5
<u>AGE-SPECIFIC RATES, 1998-2002</u>									
AGE AT DIAGNOSIS:									
<1	-	-	-	-	-	-	-	-	-
1-4	-	-	-	-	-	-	-	-	-
5-9	-	-	-	-	-	-	-	-	-
10-14	0.3	-	-	-	-	-	-	-	-
15-19	0.4	-	-	-	-	-	-	-	-
20-24	0.6	-	0.8	0.6	-	0.8	-	-	-
25-29	1.3	1.2	1.4	1.3	1.1	1.4	-	-	-
30-34	1.6	1.7	1.6	1.5	1.7	1.3	-	-	-
35-39	3.1	4.0	2.1	2.9	3.9	1.8	2.9	-	-
40-44	6.4	9.0	3.9	6.0	8.5	3.4	7.8	10.5	5.5
45-49	12.3	18.7	6.1	11.6	17.8	5.5	17.7	28.7	8.3
50-54	18.6	28.5	9.2	18.1	27.7	8.6	26.3	44.4	11.0
55-59	24.9	37.4	13.0	24.6	36.7	12.9	33.7	53.4	17.0
60-64	32.2	48.5	17.2	32.5	48.0	17.9	38.8	65.6	17.2
65-69	36.5	53.6	21.9	37.3	53.5	23.0	40.5	70.0	18.4
70-74	42.6	62.8	26.6	44.1	63.8	28.2	38.5	66.6	19.4
75-79	43.8	63.0	30.2	45.4	64.4	32.0	39.2	67.8	21.4
80-84	42.2	63.1	29.5	43.0	63.9	30.3	33.2	59.1	-
85+	41.3	64.0	31.6	42.5	67.4	32.2	-	-	-

^a SEER 9 areas. Rates are per 100,000 and are age-adjusted to the 2000 US Std Population (19 age groups - Census P25-1130), unless noted.

^b SEER 9 areas. Rates are per 100,000 and are age-adjusted to the IARC world standard population.

- Statistic not shown. Rate based on less than 25 cases for the time interval.

Table XX-3
ORAL CAVITY AND PHARYNX CANCER (Invasive)U.S. DEATH RATES, AGE-ADJUSTED AND AGE-SPECIFIC RATES^a, BY RACE AND SEX

	All Races			Whites			Blacks		
	Total	Males	Females	Total	Males	Females	Total	Males	Females
<u>AGE-ADJUSTED RATES</u>									
YEAR OF DEATH:									
1975	4.3	6.9	2.3	4.1	6.6	2.3	5.8	9.9	2.5
1976	4.2	6.9	2.2	4.0	6.6	2.2	6.1	10.6	2.6
1977	4.3	7.0	2.3	4.1	6.7	2.2	6.2	10.9	2.6
1978	4.2	6.8	2.3	4.0	6.4	2.2	6.1	10.7	2.7
1979	4.2	6.7	2.4	4.0	6.3	2.3	6.6	11.5	3.0
1980	4.2	6.7	2.3	3.9	6.1	2.2	7.0	12.5	2.8
1981	4.1	6.5	2.2	3.8	6.0	2.2	6.5	11.4	2.8
1982	4.0	6.5	2.2	3.7	6.0	2.1	6.6	11.5	2.9
1983	3.9	6.3	2.2	3.6	5.7	2.1	6.6	11.8	2.8
1984	3.9	6.2	2.2	3.6	5.6	2.1	6.4	11.7	2.4
1985	3.8	5.9	2.1	3.5	5.4	2.0	6.2	11.0	2.6
1986	3.7	5.8	2.2	3.4	5.3	2.1	6.5	11.4	2.9
1987	3.5	5.5	2.1	3.3	5.0	2.0	5.7	10.0	2.5
1988	3.6	5.6	2.0	3.3	5.1	2.0	6.0	10.7	2.5
1989	3.5	5.3	2.1	3.2	4.8	2.0	5.9	10.4	2.6
1990	3.6	5.6	2.0	3.3	5.1	2.0	6.1	11.0	2.5
1991	3.5	5.3	2.0	3.2	4.9	2.0	5.8	10.1	2.7
1992	3.3	5.1	1.9	3.1	4.7	1.9	5.6	10.0	2.3
1993	3.3	5.2	1.9	3.1	4.7	1.8	5.7	10.1	2.4
1994	3.2	4.8	1.8	2.9	4.4	1.8	5.3	9.3	2.4
1995	3.2	4.9	1.8	2.9	4.4	1.8	5.4	9.3	2.5
1996	3.0	4.6	1.8	2.8	4.2	1.7	4.9	8.7	2.1
1997	3.0	4.5	1.8	2.8	4.2	1.7	4.7	8.1	2.2
1998	3.0	4.5	1.7	2.8	4.2	1.7	4.5	7.9	2.1
1999	2.7	4.1	1.6	2.5	3.8	1.5	4.4	7.5	2.1
2000	2.7	4.1	1.6	2.5	3.7	1.6	4.1	7.3	1.8
2001	2.7	4.1	1.6	2.6	3.9	1.5	3.9	6.7	1.8
2002	2.7	4.1	1.5	2.6	3.9	1.5	3.7	6.3	1.7
<u>AGE-ADJUSTED RATES, 1998-2002</u>									
AGE AT DEATH:									
All ages	2.8	4.2	1.6	2.6	3.9	1.6	4.1	7.1	1.9
Under 65	1.3	2.0	0.6	1.1	1.7	0.5	2.5	4.4	1.0
65 and over	12.9	19.1	8.6	12.8	18.7	8.6	15.0	25.9	8.3
All ages(IARC world std) ^b	1.8	2.8	1.0	1.7	2.5	0.9	3.0	5.2	1.3
<u>AGE-SPECIFIC RATES, 1998-2002</u>									
AGE AT DEATH:									
<1	-	-	-	-	-	-	-	-	-
1-4	-	-	-	-	-	-	-	-	-
5-9	-	-	-	-	-	-	-	-	-
10-14	-	-	-	-	-	-	-	-	-
15-19	0.0	0.1	-	0.0	-	-	-	-	-
20-24	0.1	0.1	0.1	0.1	0.1	-	-	-	-
25-29	0.1	0.1	0.1	0.1	0.1	-	-	-	-
30-34	0.2	0.2	0.1	0.1	0.2	0.1	0.2	-	-
35-39	0.4	0.5	0.3	0.3	0.4	0.2	0.7	1.0	0.5
40-44	0.9	1.3	0.5	0.7	1.1	0.4	1.7	2.6	1.0
45-49	2.1	3.4	0.9	1.8	2.7	0.8	4.8	8.2	2.0
50-54	3.6	5.8	1.5	3.1	4.9	1.4	7.6	13.5	2.6
55-59	6.0	9.7	2.6	5.4	8.6	2.4	11.9	21.3	4.2
60-64	8.1	12.9	3.7	7.5	11.7	3.6	14.4	26.3	5.0
65-69	9.6	14.8	5.1	9.1	13.9	4.9	14.9	25.2	7.2
70-74	11.8	17.9	7.0	11.6	17.3	7.0	15.7	28.1	7.5
75-79	13.2	19.6	8.8	13.2	19.2	8.9	14.7	25.9	8.0
80-84	15.0	21.8	11.0	15.2	21.6	11.3	14.5	25.0	9.2
85+	19.4	27.4	16.1	19.8	27.7	16.6	15.1	24.1	11.7

^a NCHS public use data file for the total US. Rates are per 100,000 and are age-adjusted to the 2000 US Std Population (19 age groups - Census P25-1130), unless noted.

^b NCHS public use data file for the total US. Rates are per 100,000 and are age-adjusted to the IARC world standard population.

- Statistic not shown. Rate based on less than 25 cases for the time interval.

Table XX-4
 ORAL CAVITY AND PHARYNX CANCER (Invasive)

SURVIVAL RATES, BY RACE, SEX, DIAGNOSIS YEAR, STAGE AND AGE

	All Races			Whites			Blacks		
	Total	Males	Females	Total	Males	Females	Total	Males	Females
<u>5-YR RELATIVE SURVIVAL RATES</u>									
YEAR OF DIAGNOSIS:									
1960-1963 ^a	-	-	-	45	-	-	-	-	-
1970-1973 ^a	-	-	-	43	-	-	-	-	-
1974-1976 ^b	53.5	52.5	55.7	55.0	54.6	56.1	36.3	31.4	45.5
1977-1979 ^b	53.0	51.8	55.6	54.9	54.3	56.3	36.8	30.9	49.2
1980-1982 ^b	53.0	51.4	56.4	55.7	54.6	58.0	31.0	26.5	42.5
1983-1985 ^b	53.6	52.1	56.6	55.6	54.9	57.2	35.2	29.8	47.5
1986-1988 ^b	54.4	51.3	60.9	57.0	54.5	62.1	35.2	29.7	49.2
1989-1991 ^b	55.5	52.6	61.6	58.1	55.8	62.8	34.0	29.7	44.8
1992-1994 ^b	57.4	55.7	61.1	60.1	59.2	61.9	35.9	30.6	50.3
1995-2001 ^b	59.4 ^d	58.0 ^d	62.3 ^d	61.8 ^d	61.1 ^d	63.1 ^d	39.5	34.3	52.0
1995-2001 ^b									
All Stages	59.4	58.0	62.3	61.8	61.1	63.1	39.5	34.3	52.0
Localized	82.1	82.2	82.0	83.0	83.9	81.5	70.7	59.8 ^e	85.2
Regional	51.3	50.8	52.5	53.2	53.1	53.5	33.0	31.3	37.7
Distant	27.6	25.5	32.5	27.6	25.2	32.7	25.3	22.5	31.1 ^e
Unstaged	46.6	46.6	46.1	48.1	50.5	43.7	30.3 ^e	22.5 ^e	-
<u>5-YR PERIOD SURVIVAL RATES^{bc}</u>									
YEAR OF DIAGNOSIS:									
1995-2001	60.5	59.4	62.8	62.9	62.8	62.9	40.9	34.7	56.2
<u>STAGE DISTRIBUTION (%) 1995-2001^b</u>									
All Stages									
Number of cases	15,335	10,356	4,979	12,420	8,353	4,067	1,603	1,153	450
Percent	100%	100%	100%	100%	100%	100%	100%	100%	100%
Localized	34	32	40	37	35	42	21	17	31
Regional	51	53	45	49	51	44	59	62	51
Distant	10	10	9	9	9	8	16	17	14
Unstaged	5	5	6	6	5	6	5	5	4
<u>5-YR RELATIVE SURVIVAL RATES, 1995-2001^b</u>									
AGE AT DIAGNOSIS:									
<45	76.5	72.0	83.8	80.2	76.7	86.3	58.8	51.1	70.5 ^e
45-54	63.0	60.7	69.8	67.8	66.1	73.2	37.7	34.1	50.5 ^e
55-64	58.2	56.1	63.6	61.1	59.1	66.1	35.0	30.8	48.3 ^e
65-74	54.6	54.1	55.5	56.6	56.3	57.2	32.2	29.7	37.8 ^e
75+	47.4	48.3	45.7	48.6	50.5	45.7	30.2 ^e	17.1 ^e	42.8 ^f
Under 65	64.0	61.0	71.5	67.4	65.0	73.7	41.7	36.1	56.6
65 and over	52.0	52.6	51.2	53.6	54.8	52.0	32.0	27.4	40.6 ^e

^a Rates are based on End Results data from a series of hospital registries and one population-based registry.

^b Rates are from the SEER 9 areas (San Francisco, Connecticut, Detroit, Hawaii, Iowa, New Mexico, Seattle, Utah, Atlanta). Rates are based on follow-up of patients into 2002.

^c Period survival provides a more up-to-date estimate of survival by piecing together the most recent conditional survival estimates from several cohorts. It is computed here using three calendar year blocks (1999-2001: 0-1 year survival), (1998-2000: 1-2 year survival), (1997-1999: 2-3 year survival), (1996-1998: 3-4 year survival), (1995-1997: 4-5 years survival).

^d The difference in rates between 1974-1976 and 1995-2001 is statistically significant (p<.05).

^e The standard error of the survival rate is between 5 and 10 percentage points.

^f The standard error of the survival rate is greater than 10 percentage points.

- Statistic could not be calculated.

Table XX-5
ORAL CAVITY AND PHARYNX CANCER (Invasive)

SURVIVAL RATES^a

By Year of Diagnosis

All Races, Males and Females

Year of Diagnosis

	1975- 1979	1980- 1984	1985	1986	1987	1988	1989	1990	1991	1992	1993	1994	1995	1996	1997	1998	1999	2000	2001
Relative Survival Rates (SEER ^b)																			
1-year	80.2	80.1	81.9	80.8	81.2	82.2	79.9	82.1	81.8	80.5	82.0	83.7	83.5	82.2	84.3	81.4	84.2	85.1	83.5
2-year	66.3	66.4	68.6	67.3	68.5	67.4	68.2	70.0	69.6	69.4	69.2	72.4	72.2	70.3	71.7	70.4	72.8	73.8	
3-year	60.0	60.0	61.2	61.5	62.3	60.0	61.6	63.4	63.0	62.2	63.3	66.8	66.2	64.1	66.8	64.7	66.0		
4-year	56.1	56.0	57.8	58.2	59.1	55.1	57.3	60.2	58.3	57.7	59.2	62.8	62.7	60.6	63.0	60.7			
5-year	53.2	53.0	54.9	55.3	55.8	52.0	54.0	57.5	55.1	55.6	56.5	60.3	59.8	58.8	59.9				
6-year	50.8	50.3	53.1	53.0	53.7	49.1	51.2	55.4	52.5	53.4	54.5	57.7	57.5	56.6					
7-year	48.7	48.2	50.5	51.0	51.3	46.2	48.6	53.3	50.4	50.9	52.4	56.8	55.3						
8-year	46.6	46.7	49.2	49.2	48.4	44.0	47.2	51.7	49.2	49.0	50.5	53.7							
9-year	44.8	44.9	47.4	47.2	46.8	42.5	45.6	49.0	47.8	47.2	48.5								
10-year	42.9	43.3	46.2	45.4	45.6	41.1	43.5	47.4	46.2	45.8									
11-year	41.1	42.0	45.3	44.4	44.4	39.4	42.8	46.3	44.2										
12-year	39.7	40.6	43.7	43.4	43.1	38.0	41.6	45.5											
13-year	38.6	39.1	42.4	42.3	41.2	37.0	40.6												
14-year	37.6	38.3	41.0	41.6	40.1	36.2													
15-year	36.3	36.8	40.3	40.2	39.3														
16-year	35.1	35.8	39.9	38.8															
17-year	34.4	35.0	39.8																
18-year	33.6	34.2																	
19-year	33.1																		
20-year	32.2																		

^a Survival rates are relative rates expressed as percents.
^b Rates are from the SEER 9 areas.

Table XX-6
ORAL CAVITY AND PHARYNX CANCER (Invasive)

SURVIVAL RATES^a

By Year of Diagnosis

All Races, Males

Year of Diagnosis

	1975- 1979	1980- 1984	1985	1986	1987	1988	1989	1990	1991	1992	1993	1994	1995	1996	1997	1998	1999	2000	2001
Relative Survival Rates (SEER ^b)																			
1-year	79.6	79.7	82.3	79.2	80.8	81.3	78.5	81.3	81.4	79.8	80.9	84.0	83.5	82.1	83.6	81.2	84.7	84.9	84.0
2-year	65.4	65.7	68.4	64.5	67.3	66.2	65.9	68.0	68.7	68.0	67.5	72.7	71.4	70.0	70.4	70.5	71.8	73.2	
3-year	59.2	58.7	60.3	57.5	61.0	58.2	58.8	61.6	61.3	60.1	60.8	65.7	65.8	63.3	65.4	64.3	64.4		
4-year	54.7	54.6	57.3	54.1	57.5	52.6	53.7	58.2	55.3	56.0	57.1	61.3	61.7	59.6	61.1	59.9			
5-year	51.8	51.3	53.7	50.7	53.9	49.1	50.2	55.3	52.0	53.8	54.3	59.1	59.0	57.8	57.9				
6-year	49.4	48.7	52.0	48.8	51.6	46.4	47.9	53.1	49.6	51.9	52.0	56.9	56.3	55.1					
7-year	47.3	46.6	49.5	47.1	49.9	43.8	45.5	50.9	47.1	49.0	49.4	56.1	53.7						
8-year	45.3	45.0	48.6	44.9	46.6	40.8	43.9	49.8	46.0	47.1	48.4	53.2							
9-year	43.4	43.4	47.1	43.1	45.2	39.0	41.9	47.2	44.8	45.3	46.3								
10-year	41.4	41.5	45.7	41.2	43.9	37.1	39.2	46.5	42.9	43.9									
11-year	39.6	40.1	45.1	40.8	42.2	35.4	38.3	45.4	41.1										
12-year	38.3	38.9	43.6	40.1	40.8	34.2	37.1	44.8											
13-year	37.2	37.7	42.4	38.8	39.2	33.2	36.8												
14-year	36.3	36.9	40.7	38.6	38.2	31.9													
15-year	35.1	35.6	39.9	37.1	37.3														
16-year	33.8	34.6	39.3	36.0															
17-year	33.1	33.8	39.1																
18-year	32.5	33.0																	
19-year	32.1																		
20-year	31.3																		

^a Survival rates are relative rates expressed as percents.
^b Rates are from the SEER 9 areas.

Table XX-7
ORAL CAVITY AND PHARYNX CANCER (Invasive)

SURVIVAL RATES^a

By Year of Diagnosis

All Races, Females

Year of Diagnosis

	1975- 1979	1980- 1984	1985	1986	1987	1988	1989	1990	1991	1992	1993	1994	1995	1996	1997	1998	1999	2000	2001
Relative Survival Rates (SEER ^b)																			
1-year	81.7	81.1	81.1	84.1	82.3	84.2	82.7	83.8	82.7	82.2	84.6	83.2	83.5	82.3	85.8	81.9	83.2	85.6	82.4
2-year	68.4	68.1	69.0	73.4	71.0	69.9	72.6	74.3	71.3	72.5	73.0	71.7	73.7	71.0	74.5	70.1	74.9	74.9	
3-year	61.9	62.7	62.9	70.0	65.2	63.7	67.1	67.4	66.4	66.3	68.8	69.1	67.1	65.6	69.8	65.5	69.2		
4-year	59.1	58.9	58.6	67.0	62.7	60.0	64.3	64.6	64.2	61.2	63.8	66.0	64.5	62.6	67.2	62.4			
5-year	56.2	56.4	57.0	65.0	60.0	57.9	61.3	62.0	61.3	59.1	60.9	62.6	61.5	60.6	64.2				
6-year	53.7	53.7	55.0	61.8	58.1	54.3	57.2	60.3	58.3	56.4	59.9	59.2	59.9	59.5					
7-year	51.8	51.5	52.3	59.2	54.4	50.9	54.5	58.1	56.8	54.7	58.7	58.1	58.2						
8-year	49.4	50.2	50.1	58.3	52.1	50.4	53.5	55.6	55.2	53.0	54.8	54.6							
9-year	47.8	48.1	48.1	55.7	50.3	49.1	52.6	52.7	53.6	51.0	52.9								
10-year	45.9	46.8	47.0	53.6	49.1	48.8	51.3	49.2	52.6	49.7									
11-year	44.1	45.6	45.5	51.4	48.9	46.9	51.2	48.1	50.1										
12-year	42.5	44.0	43.8	49.9	47.9	45.2	49.4	46.7											
13-year	41.1	41.8	42.4	49.3	45.3	43.9	47.3												
14-year	40.0	40.9	41.5	47.5	44.1	43.9													
15-year	38.4	39.1	41.0	46.0	43.4														
16-year	37.5	38.1	40.6	44.3															
17-year	36.8	37.2	40.6																
18-year	35.6	36.5																	
19-year	34.8																		
20-year	33.7																		

^a Survival rates are relative rates expressed as percents.
^b Rates are from the SEER 9 areas.

Table XX-8

ORAL CAVITY AND PHARYNX CANCER (Invasive)

Percent Diagnosed With Cancer In 10, 20 and 30 Years and In Remaining Lifetime,
Given Cancer Free At Current Age By Race and Sex

Lifetime Risk (Percent) of Being Diagnosed (13 SEER Areas) With Cancer and
Lifetime Risk (Percent) of Dying (Total U.S.) From Cancer

2000-2002

All Races

Current Age	Males				Females			
	+10 yrs	+20 yrs	+30 yrs	Eventually	+10 yrs	+20 yrs	+30 yrs	Eventually
0	0.00	0.00	0.01	1.38	0.00	0.00	0.01	0.68
10	0.00	0.01	0.04	1.40	0.00	0.01	0.03	0.69
20	0.01	0.04	0.16	1.40	0.01	0.03	0.08	0.69
30	0.03	0.16	0.44	1.41	0.02	0.07	0.17	0.68
40	0.13	0.42	0.82	1.40	0.05	0.15	0.30	0.67
50	0.30	0.72	1.08	1.32	0.10	0.26	0.46	0.63
60	0.45	0.84	1.05	1.10	0.16	0.37	0.52	0.56

Lifetime Risk of Being Diagnosed = 1.38%
Lifetime Risk of Dying = 0.38%

Lifetime Risk of Being Diagnosed = 0.68%
Lifetime Risk of Dying = 0.19%

Whites

Current Age	Males				Females			
	+10 yrs	+20 yrs	+30 yrs	Eventually	+10 yrs	+20 yrs	+30 yrs	Eventually
0	0.00	0.00	0.01	1.40	0.00	0.01	0.02	0.70
10	0.00	0.01	0.04	1.42	0.00	0.01	0.03	0.70
20	0.01	0.04	0.16	1.42	0.01	0.03	0.07	0.70
30	0.03	0.15	0.44	1.43	0.02	0.06	0.16	0.69
40	0.13	0.42	0.82	1.42	0.04	0.14	0.30	0.68
50	0.30	0.72	1.09	1.34	0.10	0.26	0.47	0.65
60	0.45	0.85	1.07	1.12	0.17	0.39	0.54	0.58

Lifetime Risk of Being Diagnosed = 1.40%
Lifetime Risk of Dying = 0.37%

Lifetime Risk of Being Diagnosed = 0.70%
Lifetime Risk of Dying = 0.19%

Blacks

Current Age	Males				Females			
	+10 yrs	+20 yrs	+30 yrs	Eventually	+10 yrs	+20 yrs	+30 yrs	Eventually
0	0.00	0.01	0.01	1.29	0.00	0.00	0.01	0.50
10	0.01	0.01	0.04	1.33	0.00	0.01	0.03	0.51
20	0.01	0.04	0.19	1.33	0.01	0.03	0.10	0.51
30	0.03	0.19	0.55	1.36	0.02	0.10	0.21	0.51
40	0.17	0.54	0.99	1.38	0.08	0.18	0.32	0.49
50	0.40	0.88	1.20	1.30	0.11	0.25	0.38	0.44
60	0.56	0.92	1.02	1.04	0.15	0.28	0.35	0.35

Lifetime Risk of Being Diagnosed = 1.29%
Lifetime Risk of Dying = 0.50%

Lifetime Risk of Being Diagnosed = 0.50%
Lifetime Risk of Dying = 0.17%

Devcan Version 6.0, April 2005, National Cancer Institute (<http://srab.cancer.gov/devcan/>).

Source: Incidence data are from the SEER 13 areas (San Francisco, Connecticut, Detroit, Hawaii, Iowa, New Mexico, Seattle, Utah, Atlanta, San Jose-Monterey, Los Angeles, Alaska Native Registry, Rural Georgia). Mortality data are from the NCHS public use data file for the total US.

Table XX-9
ORAL CAVITY AND PHARYNX CANCER (Invasive)

SEER INCIDENCE AND U.S. MORTALITY
AGE-ADJUSTED RATES AND TRENDS^a
 By Race/Ethnicity and Sex

Incidence^b

RACE/ETHNICITY	Rate 1998-2002			Trend 1992-2002		
	Rate per 100,000 persons			APC (%)		
	Total	Males	Females	Total	Males	Females
All Races	10.5	15.5	6.4	-1.5 ^e	-1.8 ^e	-1.1 ^e
White	10.5	15.4	6.4	-1.2 ^e	-1.5 ^e	-1.2 ^e
White Hispanic ^c	6.5	9.6	4.0	-2.1 ^e	-2.8 ^e	-1.4
White Non-Hispanic ^c	11.0	16.1	6.6	-1.2 ^e	-1.4 ^e	-1.4 ^e
Black	11.6	19.0	6.1	-2.8 ^e	-3.1 ^e	-1.7 ^e
Asian/Pacific Islander	8.5	11.9	5.8	-1.1	-1.5	-0.1
Amer Ind/Alaska Nat	6.1	8.9	3.8	-6.7 ^e	-9.2 ^e	-
Hispanic ^c	6.2	9.2	3.9	-2.1 ^e	-2.8 ^e	-1.3

Mortality^d

RACE/ETHNICITY	Rate 1998-2002			Trend 1992-2002		
	Rate per 100,000 persons			APC (%)		
	Total	Males	Females	Total	Males	Females
All Races	2.8	4.2	1.6	-2.5 ^e	-2.7 ^e	-2.4 ^e
White	2.6	3.9	1.6	-2.1 ^e	-2.3 ^e	-2.3 ^e
White Hispanic ^c	1.8	2.9	0.9	-3.3 ^e	-4.1 ^e	-1.2
White Non-Hispanic ^c	2.7	4.0	1.6	-1.9 ^e	-2.1 ^e	-2.1 ^e
Black	4.1	7.1	1.9	-4.3 ^e	-4.6 ^e	-3.5 ^e
Asian/Pacific Islander	2.4	3.5	1.4	-2.4 ^e	-2.8 ^e	-1.2
Amer Ind/Alaska Nat	2.2	3.6	1.2	-1.1	-1.5	-
Hispanic ^c	1.7	2.9	0.8	-3.2 ^e	-4.0 ^e	-1.2

- The APC is the Annual Percent Change over the time interval.
 - Statistic not shown. Rate based on less than 25 cases for the time interval. Trend based on less than 10 cases for at least one year within the time interval.
^a Rates are age-adjusted to the 2000 US Std Population (19 age groups - Census P25-1130). Trends are based on rates age-adjusted to the 2000 US Std Population (19 age groups - Census P25-1130).
^b Incidence data are from the 13 SEER areas (San Francisco, Connecticut, Detroit, Hawaii, Iowa, New Mexico, Seattle, Utah, Atlanta, San Jose-Monterey, Los Angeles, Alaska Native Registry and Rural Georgia).
^c Hispanic and Non-Hispanic are not mutually exclusive from Whites, Blacks, Asian Pacific Islanders, and American Indians/Alaska Natives. Incidence data for Hispanics and Non-Hispanics do not include cases from Detroit, Hawaii, Alaska Native Registry and Rural Georgia. For mortality, information is included for all states except Connecticut, Maine, Maryland, Minnesota, New Hampshire, New York, North Dakota, Oklahoma and Vermont.
^d Mortality data are analyzed from a public use file provided by the National Center for Health Statistics (NCHS).
^e The APC is significantly different from zero (p<.05).

Table XX-10
ORAL CAVITY AND PHARYNX CANCER (Invasive)

AGE-ADJUSTED SEER INCIDENCE RATES AND SEER DEATH RATES^a
 By Registry, Race and Sex

	All Races			Whites			Blacks		
	Total	Males	Females	Total	Males	Females	Total	Males	Females
<u>SEER INCIDENCE RATES^b, 1998-2002</u>									
REGISTRY									
13 SEER Areas	10.5	15.5	6.4	10.5	15.4	6.4	11.6	19.0	6.1
11 SEER Areas	10.5	15.4	6.4	10.5	15.4	6.4	11.5	18.9	6.0
9 SEER Areas	10.8	15.8	6.5	10.8	15.7	6.6	11.8	19.5	6.0
San Francisco-Oakland	11.1	15.8	7.2	11.4	16.4	7.1	10.3	15.7	6.4
Connecticut	10.2	15.1	6.2	10.0	14.9	6.1	11.9	19.3	6.6
Metropolitan Detroit	12.4	19.0	7.1	11.8	17.4	7.4	14.2	25.7	5.8
Hawaii	10.9	15.7	6.6	14.8	19.3	10.0	-	-	-
Iowa	11.1	16.8	6.4	11.0	16.7	6.4	-	-	-
New Mexico	9.3	14.0	5.2	9.7	14.6	5.5	-	-	-
Seattle-Puget Sound	11.1	15.5	7.1	11.4	16.0	7.1	8.5	12.0	-
Utah	8.4	11.9	5.4	8.5	12.0	5.3	-	-	-
Metropolitan Atlanta	10.0	14.6	6.3	9.9	14.2	6.3	10.5	16.5	6.1
San Jose-Monterey	9.9	14.5	6.0	10.1	15.0	5.8	9.3	-	-
Los Angeles	9.7	14.4	5.9	9.9	14.7	5.9	11.2	17.8	6.3
<u>SEER DEATH RATES^c, 1998-2002</u>									
REGISTRY									
13 SEER Areas	2.6	3.9	1.6	2.5	3.6	1.6	3.7	6.0	2.0
11 SEER Areas	2.6	3.8	1.6	2.5	3.6	1.6	3.6	5.9	2.0
9 SEER Areas	2.6	3.9	1.6	2.5	3.6	1.5	3.5	5.8	1.9
San Francisco-Oakland	3.1	4.4	2.1	2.9	3.9	2.2	4.1	6.1	2.6
Connecticut	2.4	3.8	1.3	2.3	3.5	1.3	3.9	7.8	-
Metropolitan Detroit	2.7	4.2	1.6	2.4	3.6	1.5	3.8	6.4	1.8
Hawaii	3.1	4.5	1.8	4.2	5.3	3.2	-	-	-
Iowa	2.3	3.5	1.3	2.3	3.5	1.3	-	-	-
New Mexico	2.1	3.1	1.2	2.1	3.1	1.3	-	-	-
Seattle-Puget Sound	2.9	4.2	1.8	3.0	4.3	1.8	-	-	-
Utah	1.8	2.8	1.1	1.8	2.7	1.1	-	-	-
Metropolitan Atlanta	2.3	3.3	1.6	2.0	2.7	1.4	3.3	5.5	1.9
San Jose-Monterey	2.7	3.6	1.9	2.7	3.4	2.0	-	-	-
Los Angeles	2.6	3.8	1.7	2.5	3.6	1.6	3.9	6.2	2.3

^a Incidence and death rates are per 100,000 and are age-adjusted to the 2000 US Std Population (19 age groups - Census P25-1130).

^b The SEER 9 areas are San Francisco, Connecticut, Detroit, Hawaii, Iowa, New Mexico, Seattle, Utah, and Atlanta. The SEER 11 areas comprise the SEER 9 areas plus San Jose-Monterey and Los Angeles. The SEER 13 areas comprise the SEER 11 areas plus the Alaska Native Registry and Rural Georgia.

^c NCHS public use data file for the total US with analyses limited to the SEER geographic areas.

- Statistic could not be calculated or populations are inadequate.

Table XX-11
ORAL CAVITY AND PHARYNX CANCER (Invasive)

AVERAGE ANNUAL AGE-ADJUSTED CANCER DEATH^a RATES BY STATE, ALL RACES, 1998-2002

Males and Females

State	Rate	SE	Rank	PD
TOTAL U.S.	2.8	0.01		
High Five States				
District of Columbia	4.8 ^{bc}	0.41	(01)	71.4
Mississippi	3.7 ^{bc}	0.16	(02)	32.1
South Carolina	3.7 ^{bc}	0.14	(03)	32.1
Louisiana	3.7 ^{bc}	0.13	(04)	32.1
Alaska	3.5 ^b	0.48	(05)	25.0
Low Five States				
Iowa	2.3 ^{bc}	0.12	(47)	-17.9
New Mexico	2.1 ^{bc}	0.16	(48)	-25.0
Nebraska	2.0 ^{bc}	0.15	(49)	-28.6
Colorado	2.0 ^{bc}	0.11	(50)	-28.6
Utah	1.8 ^{bc}	0.15	(51)	-35.7

Males

State	Rate	SE	Rank	PD
TOTAL U.S.	4.2	0.03		
High Five States				
District of Columbia	8.4 ^{bc}	0.84	(01)	100.0
Mississippi	6.1 ^{bc}	0.33	(02)	45.2
South Carolina	5.9 ^{bc}	0.26	(03)	40.5
Louisiana	5.9 ^{bc}	0.26	(04)	40.5
Alaska	5.3 ^b	0.90	(05)	26.2
Low Five States				
New Mexico	3.1 ^{bc}	0.29	(47)	-26.2
Colorado	2.9 ^{bc}	0.20	(48)	-31.0
Nebraska	2.9 ^{bc}	0.27	(49)	-31.0
Utah	2.8 ^{bc}	0.28	(50)	-33.3
Wyoming	2.7 ^b	0.50	(51)	-35.7

Females

State	Rate	SE	Rank	PD
TOTAL U.S.	1.6	0.01		
High Five States				
Wyoming	2.3 ^b	0.42	(01)	43.8
Oregon	2.0 ^b	0.14	(02)	25.0
Louisiana	2.0 ^b	0.13	(03)	25.0
New Hampshire	1.9 ^b	0.24	(04)	18.8
Alaska	1.9 ^b	0.48	(05)	18.8
Low Five States				
Arizona	1.3 ^{bc}	0.09	(47)	-18.8
Nebraska	1.2 ^b	0.15	(48)	-25.0
New Mexico	1.2 ^b	0.16	(49)	-25.0
Colorado	1.2 ^{bc}	0.11	(50)	-25.0
Utah	1.1 ^b	0.16	(51)	-31.3

For additional detailed cancer statistics by state, please visit the State Cancer Profiles website. <http://statecancerprofiles.cancer.gov/>

^a NCHS public use data file. Rates are per 100,000 and are age-adjusted to the 2000 US Std Population (19 age groups - Census P25-1130).
^b Absolute percent difference between state rate and total U.S. rate is 15% or more.
^c Difference between state rate and total U.S. rate is statistically significant (p<=.0002).
SE Standard error of the rate.
PD Percent difference between state rate and total U.S. rate.

Table XX-12
 ORAL CAVITY AND PHARYNX CANCER (Invasive)

Estimated United States Cancer Prevalence Counts^a on January 1, 2002
 By Race/Ethnicity, Sex and Years Since Diagnosis

Years Since Diagnosis	0 to <5	5 to <10	10 to <15	15 to <20	20 to <25	0 to <12 ^e	0 to <27 ^e	>=27 ^g	Complete ^h
Race/Sex									
All Races ^b	82,465	51,737	33,393	22,747	14,821	149,578	209,742	22,057	231,799
Males	54,587	33,348	20,442	13,862	8,841	97,579	134,000	13,272	147,272
Females	27,878	18,389	12,951	8,885	5,980	51,999	75,742	8,785	84,527
White ^b	71,152	45,325	29,834	20,540	13,178	130,229	184,232	18,813	203,045
Males	47,417	29,496	18,557	12,706	8,083	85,704	119,000	11,440	130,440
Females	23,735	15,829	11,277	7,834	5,095	44,525	65,232	7,373	72,605
Black ^b	7,268	3,919	2,152	1,392	1,019	12,179	15,988	1,037	17,025
Males	4,690	2,319	1,103	720	412	7,518	9,340	429	9,769
Females	2,578	1,600	1,049	672	607	4,661	6,648	608	7,256
Asian/Pacific Islander ^c	2,689	1,501	+	+	+	4,625	+	+	+
Males	1,675	928	+	+	+	2,877	+	+	+
Females	1,014	573	+	+	+	1,748	+	+	+
Hispanic ^d	3,350	1,862	+	+	+	5,669	+	+	+
Males	2,203	1,091	+	+	+	3,545	+	+	+
Females	1,147	771	+	+	+	2,124	+	+	+

Estimated prevalence percent^a on January 1, 2002, of the SEER 11 population diagnosed in the previous 10 years
 By Age at Prevalence, Race/Ethnicity and Sex

Age at Prevalence	Age Specific (Crude)										Age-Adjusted ^f
	All Ages	0-9	10-19	20-29	30-39	40-49	50-59	60-69	70-79	80+	All Ages
Race/Sex											
All Races ^c	0.0424%	0.0003%	0.0017%	0.0046%	0.0120%	0.0358%	0.0908%	0.1511%	0.1782%	0.1583%	0.0451%
Males	0.0562%	0.0002%	0.0016%	0.0046%	0.0128%	0.0491%	0.1349%	0.2246%	0.2602%	0.2364%	0.0650%
Females	0.0288%	0.0004%	0.0017%	0.0046%	0.0112%	0.0226%	0.0489%	0.0857%	0.1165%	0.1163%	0.0285%
White ^c	0.0449%	0.0003%	0.0017%	0.0042%	0.0109%	0.0333%	0.0914%	0.1593%	0.1876%	0.1652%	0.0460%
Males	0.0597%	-	0.0013%	0.0041%	0.0119%	0.0467%	0.1360%	0.2356%	0.2725%	0.2511%	0.0665%
Females	0.0301%	0.0003%	0.0022%	0.0044%	0.0100%	0.0196%	0.0479%	0.0896%	0.1227%	0.1196%	0.0286%
Black ^c	0.0296%	-	0.0021%	0.0048%	0.0098%	0.0373%	0.0913%	0.1328%	0.1237%	0.0768%	0.0381%
Males	0.0396%	-	0.0036%	0.0051%	0.0088%	0.0469%	0.1457%	0.2059%	0.1874%	0.1033%	0.0558%
Females	0.0205%	-	-	0.0044%	0.0107%	0.0289%	0.0459%	0.0753%	0.0818%	0.0644%	0.0245%
Asian/Pacific Islander ^c	0.0374%	-	0.0008%	0.0061%	0.0180%	0.0480%	0.0811%	0.1044%	0.1402%	0.1302%	0.0404%
Males	0.0479%	-	-	0.0073%	0.0194%	0.0648%	0.1122%	0.1527%	0.2031%	0.1623%	0.0552%
Females	0.0276%	-	-	0.0050%	0.0166%	0.0330%	0.0537%	0.0645%	0.0937%	0.1082%	0.0282%
Hispanic ^d	0.0135%	-	0.0012%	0.0024%	0.0061%	0.0175%	0.0458%	0.0841%	0.1142%	0.0986%	0.0256%
Males	0.0164%	-	-	0.0028%	0.0058%	0.0220%	0.0640%	0.1288%	0.1766%	0.1199%	0.0359%
Females	0.0104%	-	0.0019%	0.0019%	0.0065%	0.0128%	0.0291%	0.0473%	0.0698%	0.0869%	0.0173%

^a US 2002 cancer prevalence counts are based on 2002 cancer prevalence proportions from the SEER registries and 1/1/2002 US population estimates based on the average of 2001 and 2002 population estimates from the US Bureau of the Census. Prevalence was calculated using the First Malignant Primary Only for a person.

^{b c d} Statistics based on ^b SEER 9 Areas ^c SEER 11 Areas and Rural Georgia ^d SEER 11 Areas excluding Hawaii and Detroit.

^e Maximum limited-duration prevalence: 27 years for 1975-2002 SEER 9 data; 12 years for 1990-2002 SEER 11 data (used to calculate prevalence for Hispanics and Asian Pacific Islanders).

^f Percentages are age-adjusted to the 2000 US standard population by 5-year age groups.

^{g h} (g) Cases diagnosed more than 27 years ago were estimated using the completeness index method (Capocaccia et. al. 1997, Merrill et. al. 2000). (h) Complete prevalence is obtained by summing 0 to <27 and >=27.

- Statistic not shown. Statistic based on fewer than 5 cases estimated alive in SEER for the time interval.

+ Not available.

SEER Incidence, Delay Adjusted Incidence and US Death Rates+ Oral Cavity and Pharynx Cancer, by Race and Sex

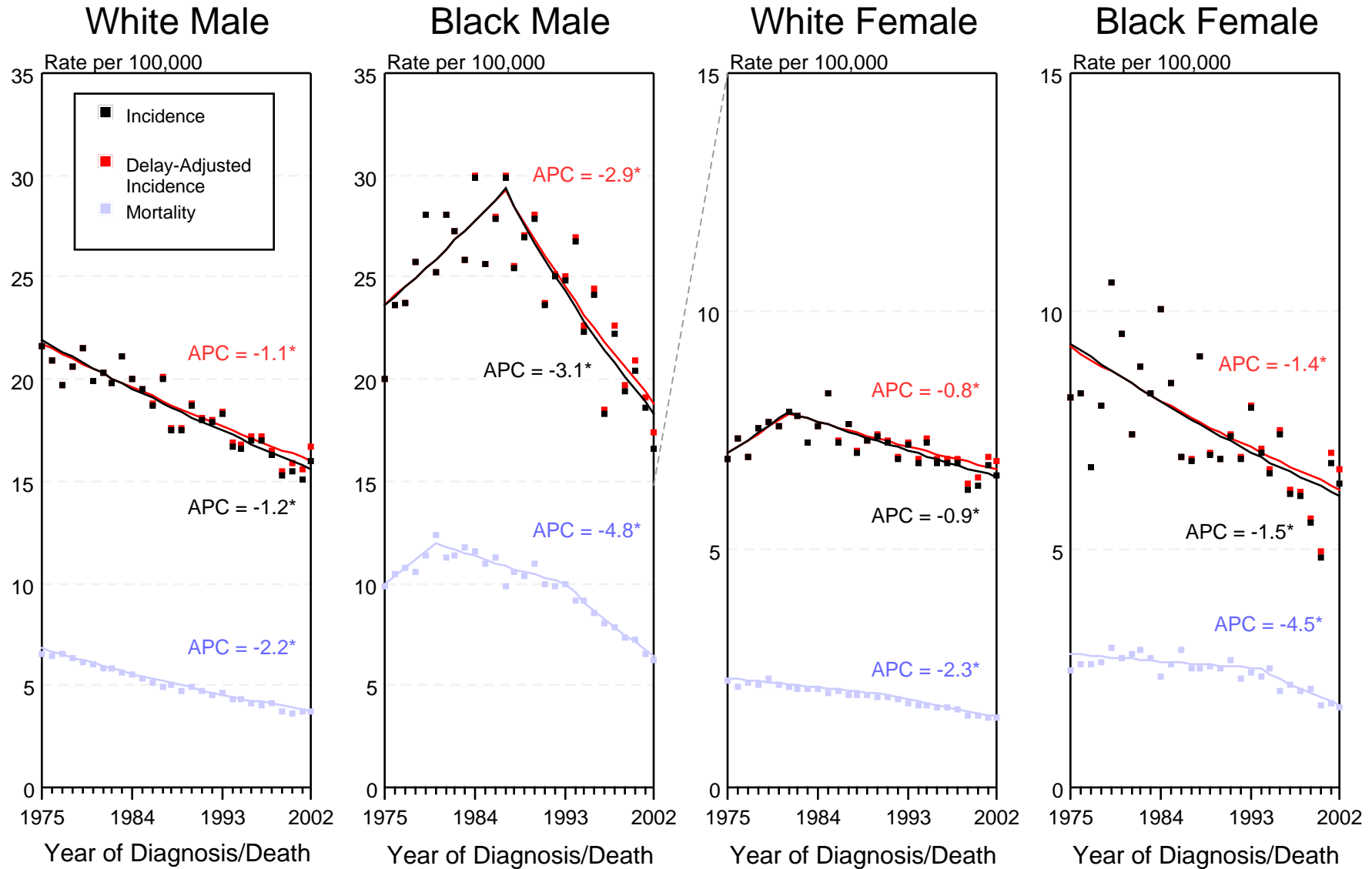


Figure XX-1

+ Source: SEER 9 areas and NCHS public use data file for the total US. Rates are age-adjusted to the 2000 US Std Population (19 age groups - Census P25-1103). Regression lines and APCs are calculated using the Joinpoint Regression Program Version 3.0, April 2005, National Cancer Institute.

The APC is the Annual Percent Change for the regression line segments. The APC shown on the graph is for the most recent trend.

* The APC is significantly different from zero ($p < 0.05$).

SEER Incidence and US Death Rates + Oral Cavity and Pharynx Cancer, Both Sexes

Joinpoint Analyses for 1975-2002 for Whites and Blacks

Rates for 1992-2002 for Asian/Pacific Islander, American Indian/Alaska Native and Hispanic

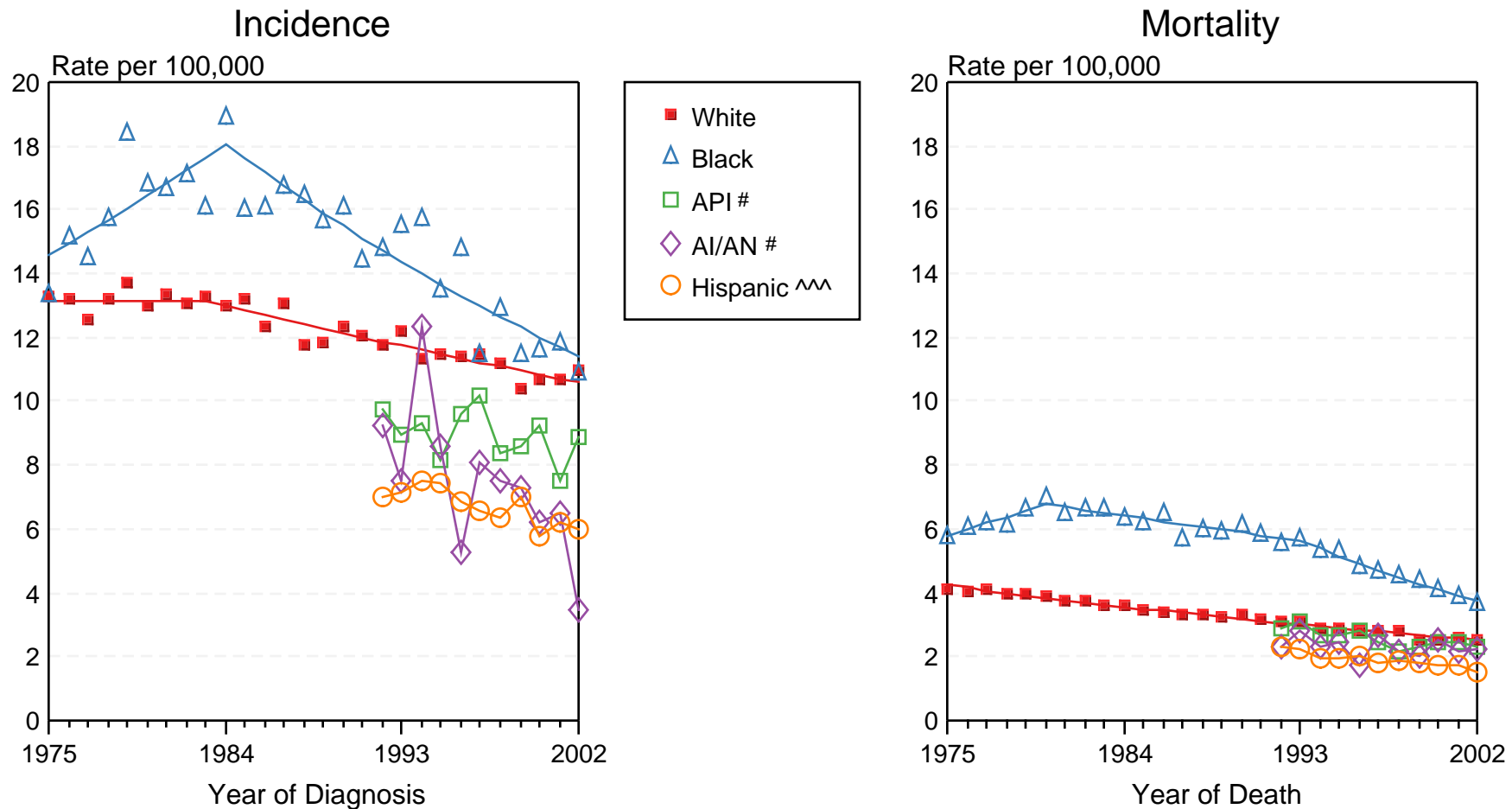


Figure XX-2

+ Source: Incidence data for whites and blacks is from the SEER 9 areas (San Francisco, Connecticut, Detroit, Hawaii, Iowa, New Mexico, Seattle, Utah, Atlanta). Incidence data for Asian/Pacific Islanders, American Indian/Alaska Natives and Hispanics is from the SEER 13 Areas (SEER 9 Areas, San Jose-Monterey, Los Angeles, Alaska Native Registry and Rural Georgia). Mortality data is from NCHS public use data file for the total US. Rates are age-adjusted to the 2000 US Std Population (19 age groups - Census P25-1103). Regression lines for whites and blacks are calculated using the Joinpoint Regression Program Version 3.0, April 2005, National Cancer Institute.

API = Asian/Pacific Islander. AI/AN = American Indian/Alaska Native.

^^ Hispanic is not mutually exclusive from Whites, Blacks, Asian/Pacific Islanders, and American Indians/Alaska Natives. Incidence data for Hispanics excludes cases from Detroit, Hawaii, Alaska Native Registry and Rural Georgia. Mortality data for Hispanics excludes cases from Connecticut, Maine, Maryland, Minnesota, Oklahoma, New Hampshire, New York, North Dakota, and Vermont.