

Table XXIV-1  
TESTIS CANCER (Invasive)

TRENDS IN SEER INCIDENCE<sup>a</sup> AND U.S. MORTALITY<sup>b</sup> USING THE JOINPOINT REGRESSION PROGRAM, 1973-1999  
WITH UP TO THREE JOINPOINTS BY RACE AND AGE

	<u>All Races</u>		<u>Whites</u>		<u>Blacks</u>	
	<u>Year</u>	<u>APC</u>	<u>Year</u>	<u>APC</u>	<u>Year</u>	<u>APC</u>
<u>SEER Cancer Incidence<sup>a</sup></u>						
Age - All Ages	1973-99	1.8★	1973-89 1989-99	2.8★ 0.7	1973-99	1.9★
Age - Under 50	1973-89 1989-99	2.9★ 0.8	1973-89 1989-99	3.3★ 0.8	1973-99	2.1★
Age - 50 and Over	1973-99	-0.5	1973-99	-0.4		
<u>U.S. Cancer Mortality<sup>b</sup></u>						
Age - All Ages	1973-77 1977-81 1981-97 1997-99	-6.6★ -11.8★ -2.8★ 8.9	1973-77 1977-81 1981-97 1997-99	-6.5★ -12.2★ -2.7★ 8.7	1973-99	-3.0★
Age - Under 50	1973-77 1977-81 1981-97 1997-99	-6.1★ -13.0★ -2.5★ 8.7	1973-76 1976-81 1981-97 1997-99	-4.5 -12.4★ -2.5★ 9.1	1973-99	-1.6★
Age - 50 and Over	1973-90 1990-99	-6.1★ -0.3	1973-81 1981-99	-8.7★ -2.9★	1973-99	-4.7★

The APC is the Annual Percent Change based on rates age-adjusted to the 2000 U.S. standard population by 5-year age groups using the Joinpoint Regression Program.

Trends are from the SEER 9 areas.

Trends are from the NCHS public use data file.

★ The APC is significantly different from zero (p<.05).

<sup>a</sup>  
<sup>b</sup>  
★

Table XXIV-2  
TESTIS CANCER (Invasive)

SEER INCIDENCES AND U.S. DEATH<sup>â</sup> RATES, AGE-ADJUSTED AND AGE-SPECIFIC RATES, BY RACE

	Incidence <sup>§</sup>			US Death <sup>â</sup>		
	All Races, Males	White Males	Black Males	All Races, Males	White Males	Black Males
<u>AGE-SPECIFIC RATES, 1995-99</u>						
AGE AT DIAGNOSIS/DEATH:						
0-4	0.6	-	-	-	-	-
5-9	-	-	-	-	-	-
10-14	-	-	-	-	-	-
15-19	3.1	3.7	-	0.1	0.1	-
20-24	8.1	9.5	-	0.3	0.4	-
25-29	13.4	16.1	-	0.4	0.5	-
30-34	14.5	17.0	-	0.5	0.6	-
35-39	12.3	14.0	4.1	0.5	0.6	0.4
40-44	8.5	9.8	-	0.4	0.5	-
45-49	6.1	7.0	-	0.3	0.4	-
50-54	3.6	4.0	-	0.2	0.2	-
55-59	2.1	2.4	-	0.2	0.3	-
60-64	1.6	1.7	-	0.2	0.2	-
65-69	1.5	1.7	-	0.2	0.2	-
70-74	-	-	-	0.3	0.3	-
75-79	-	-	-	0.3	0.3	-
80-84	-	-	-	0.5	0.5	-
85+	-	-	-	0.4	-	-
<u>AGE-ADJUSTED RATES, 1995-99</u>						
AGE AT DIAGNOSIS/DEATH:						
All ages	5.4	6.2	1.4	0.3	0.3	0.1
Under 65	6.0	6.9	1.5	0.3	0.3	0.1
65 and over	1.0	1.1	-	0.3	0.3	-
All ages (world std.) <sup>⊕</sup>	5.0	5.8	1.2	0.2	0.2	0.1

§ SEER 9 areas. Rates are per 100,000 and are age-adjusted to the 2000 U.S. standard population by 5-year age groups, unless noted.  
<sup>â</sup> NCHS public use data file. Rates are per 100,000 and are age-adjusted to the 2000 U.S. standard population by 5-year age groups, unless noted.  
<sup>⊕</sup> Rates are per 100,000 and are age-adjusted to the world standard population.  
 - Statistic not shown. Rate based on less than 25 cases for the time interval.

Table XXIV-3  
TESTIS CANCER (Invasive)

## SEER INCIDENCES AND U.S. DEATH RATES, AGE-ADJUSTED RATES, BY RACE AND AGE

	All Races, Males			White Males			Black Males		
	All	<50	50+	All	<50	50+	All	<50	50+
<u>SEER INCIDENCE RATES</u>									
<u>YEAR OF DIAGNOSIS:</u>									
1973	3.3	3.8	2.2	3.6	4.1	2.3	-	-	-
1974	3.6	4.1	2.2	3.8	4.4	2.2	-	-	-
1975	3.7	4.2	2.4	4.1	4.7	2.6	-	-	-
1976	3.4	4.2	1.5	3.8	4.5	1.7	-	-	-
1977	4.3	5.1	2.3	4.9	5.8	2.4	-	-	-
1978	3.6	4.2	1.8	3.9	4.6	2.1	-	-	-
1979	3.9	4.5	2.2	4.3	5.1	2.3	-	-	-
1980	4.4	5.3	1.9	4.9	6.0	2.1	-	-	-
1981	4.2	5.1	1.8	4.8	5.8	2.1	-	-	-
1982	4.4	5.2	2.3	5.0	6.0	2.5	-	-	-
1983	4.6	5.5	2.2	5.2	6.3	2.5	-	-	-
1984	4.4	5.3	1.9	5.0	6.1	2.2	-	-	-
1985	4.5	5.5	1.8	5.2	6.3	2.1	-	-	-
1986	4.8	5.8	2.2	5.6	6.8	2.3	-	-	-
1987	5.0	6.3	1.9	5.6	7.1	1.9	-	-	-
1988	4.6	5.8	1.5	5.4	6.9	1.7	-	-	-
1989	5.5	6.7	2.2	6.3	7.8	2.5	-	-	-
1990	5.1	6.3	2.1	6.0	7.4	2.4	-	-	-
1991	5.1	6.3	2.1	5.8	7.1	2.4	-	-	-
1992	5.2	6.5	1.9	6.1	7.6	2.1	-	-	-
1993	5.1	6.5	1.6	6.0	7.6	1.9	-	-	-
1994	5.6	6.9	2.1	6.3	7.9	2.3	-	-	-
1995	4.7	5.8	1.9	5.4	6.6	2.1	-	-	-
1996	5.4	6.7	1.8	6.2	7.9	1.9	-	-	-
1997	5.5	6.7	2.4	6.4	7.8	2.7	-	-	-
1998	5.7	7.3	1.6	6.6	8.5	1.7	-	-	-
1999	5.5	6.9	1.7	6.3	8.0	1.9	-	-	-
1995-99	5.4	6.7	1.9	6.2	7.8	2.1	1.4	1.6	-
<u>U.S. DEATH RATES</u>									
<u>YEAR OF DEATH:</u>									
1973	0.9	0.8	0.9	0.9	0.9	1.0	-	-	-
1974	0.8	0.8	0.7	0.8	0.9	0.7	-	-	-
1975	0.7	0.7	0.7	0.8	0.8	0.8	-	-	-
1976	0.7	0.7	0.7	0.8	0.8	0.7	0.4	-	-
1977	0.6	0.7	0.6	0.7	0.7	0.6	-	-	-
1978	0.6	0.6	0.5	0.6	0.6	0.6	0.2	-	-
1979	0.5	0.5	0.6	0.5	0.5	0.6	0.4	-	-
1980	0.5	0.4	0.5	0.5	0.5	0.5	-	-	-
1981	0.4	0.4	0.4	0.4	0.4	0.4	-	-	-
1982	0.4	0.4	0.4	0.4	0.4	0.4	-	-	-
1983	0.4	0.4	0.4	0.4	0.4	0.4	-	-	-
1984	0.3	0.3	0.4	0.4	0.4	0.4	-	-	-
1985	0.4	0.3	0.4	0.4	0.4	0.4	-	-	-
1986	0.3	0.3	0.3	0.3	0.3	0.4	-	-	-
1987	0.3	0.4	0.3	0.4	0.4	0.3	-	-	-
1988	0.3	0.3	0.4	0.3	0.3	0.4	-	-	-
1989	0.3	0.3	0.3	0.3	0.3	0.3	0.2	-	-
1990	0.3	0.3	0.2	0.3	0.3	0.2	-	-	-
1991	0.3	0.3	0.3	0.3	0.3	0.3	-	-	-
1992	0.3	0.3	0.3	0.3	0.3	0.3	-	-	-
1993	0.3	0.3	0.3	0.3	0.3	0.3	-	-	-
1994	0.3	0.3	0.2	0.3	0.3	0.2	-	-	-
1995	0.2	0.2	0.2	0.3	0.3	0.2	-	-	-
1996	0.3	0.3	0.3	0.3	0.3	0.3	-	-	-
1997	0.2	0.2	0.2	0.3	0.3	0.3	-	-	-
1998	0.3	0.3	0.3	0.3	0.3	0.3	-	-	-
1999	0.3	0.3	0.3	0.3	0.3	0.3	-	-	-
1995-99	0.3	0.3	0.3	0.3	0.3	0.3	0.1	0.1	-

SEER 9 areas. Rates are per 100,000 and are age-adjusted to the 2000 U.S. standard population.  
 NCHS public use data file. Rates are per 100,000 and are age-adjusted to the 2000 U.S. standard population.  
 Statistic not shown. Rate based on less than 25 cases for the time interval.

Table XXIV-4  
TESTIS CANCER (Invasive)

SURVIVAL RATES, BY RACE, DIAGNOSIS YEAR, STAGE AND AGE

	<u>All Races, Males</u>			<u>White Males</u>			<u>Black Males</u>		
	All	<50	50+	All	<50	50+	All	<50	50+
<u>5-YR RELATIVE SURVIVAL RATES</u>									
YEAR OF DIAGNOSIS:									
1960-63 <sup>a</sup>	-	-	-	63	-	-	-	-	-
1970-73 <sup>a</sup>	-	-	-	72	-	-	-	-	-
1974-76 <sup>b</sup>	78.7	78.1	82.9	78.8	78.2	83.3	75.9 <sup>†</sup>	-	-
1977-79 <sup>b</sup>	87.3	88.5	77.1	87.8	88.9	78.1	66.2 <sup>†</sup>	-	-
1980-82 <sup>b</sup>	91.8	91.8	91.8	92.1	92.0	92.7	89.7 <sup>†</sup>	89.2 <sup>†</sup>	-
1983-85 <sup>b</sup>	91.0	91.8	82.3	91.3	92.3	80.9	87.9 <sup>†</sup>	84.2 <sup>†</sup>	-
1986-88 <sup>b</sup>	95.1	95.2	93.4	95.6	95.6	94.3	-	-	-
1989-91 <sup>b</sup>	95.4	95.4	93.8	95.7	95.7	94.9	91.1 <sup>†</sup>	93.3 <sup>†</sup>	-
1992-98 <sup>b</sup>	95.4 <sup>‡</sup>	95.8 <sup>‡</sup>	89.1	95.7 <sup>‡</sup>	96.0 <sup>‡</sup>	89.5	84.7	85.4	-
1992-98 <sup>b</sup>									
ALL STAGES	95.4	95.8	89.1	95.7	96.0	89.5	84.7	85.4	-
LOCALIZED	98.8	98.8	96.9	98.8	98.7	97.5	97.6	97.2	-
REGIONAL	94.6	95.6	82.7 <sup>†</sup>	95.2	96.3	83.1 <sup>†</sup>	-	-	-
DISTANT	74.0	76.6	44.9 <sup>†</sup>	74.6	77.6	40.1 <sup>†</sup>	-	-	-
UNSTAGED	93.2	93.3	-	92.9	93.0	-	-	-	-
<u>STAGE DISTRIBUTION (%) 1992-98<sup>b</sup></u>									
ALL STAGES									
Number of cases	4,621	4,278	343	4,309	3,989	320	108	103	5
Percent	100%	100%	100%	100%	100%	100%	100%	100%	100%
LOCALIZED	69	70	66	70	70	66	59	60	40
REGIONAL	18	18	19	18	18	19	18	18	-
DISTANT	11	10	13	10	10	13	21	19	60
UNSTAGED	2	2	2	2	2	3	2	2	-
<u>5-YR RELATIVE SURVIVAL RATES, 1992-98<sup>b</sup></u>									
AGE AT DIAGNOSIS:									
<45	95.7	-	-	95.9	-	-	85.9	-	-
45-54	95.7	-	-	95.9	-	-	-	-	-
55-64	88.7	-	-	89.1	-	-	-	-	-
65-74	74.5 <sup>†</sup>	-	-	75.3 <sup>†</sup>	-	-	-	-	-
75+	-	-	-	-	-	-	-	-	-
Under 65	95.6	-	-	95.9	-	-	84.7	-	-
65 and over	77.2 <sup>†</sup>	-	-	78.0 <sup>†</sup>	-	-	-	-	-

<sup>a</sup>

<sup>b</sup>

Rates are based on End Results data from a series of hospital registries and one population-based registry. Rates are from the SEER 9 areas. They are based on data from population-based registries in Connecticut, New Mexico, Utah, Iowa, Hawaii, Atlanta, Detroit, Seattle-Puget Sound and San Francisco-Oakland. Rates are based on follow-up of patients into 1999.

The difference in rates between 1974-76 and 1992-98 is statistically significant ( $p < .05$ ).

The standard error of the survival rate is between 5 and 10 percentage points.

The standard error of the survival rate is greater than 10 percentage points.

Statistic could not be calculated.

‡  
†  
-

Table XXIV-5  
TESTIS CANCER (Invasive)

INCIDENCE, DEATH, AND SURVIVAL RATES\*

By Year of Diagnosis/Death

All Races, Males

Year of Diagnosis/Death

	1975	1980	1981	1982	1983	1984	1985	1986	1987	1988	1989	1990	1991	1992	1993	1994	1995	1996	1997	1998	1999
Incidence																					
SEER <sup>a</sup>	3.7	4.4	4.2	4.4	4.6	4.4	4.5	4.8	5.0	4.6	5.5	5.1	5.1	5.2	5.1	5.6	4.7	5.4	5.5	5.7	5.5
Mortality																					
U.S. <sup>b</sup>	0.7	0.5	0.4	0.4	0.4	0.3	0.4	0.3	0.3	0.3	0.3	0.3	0.3	0.3	0.3	0.3	0.2	0.3	0.2	0.3	0.3
SEER <sup>a</sup>	0.9	0.5	0.3	0.4	0.3	0.3	0.3	0.2	0.4	0.2	0.2	0.2	0.2	0.2	0.3	0.3	0.2	0.3	0.2	0.2	0.3
Relative Survival Rates (SEER <sup>a</sup> )																					
1-year	90.1	95.8	97.1	96.4	95.5	95.6	97.1	98.1	98.1	98.9	98.2	98.2	98.4	97.9	96.9	97.7	98.3	97.9	97.5	97.9	
2-year	84.1	90.7	94.2	93.9	92.6	92.4	94.0	96.6	97.3	96.6	95.7	96.7	96.8	96.7	95.9	96.4	97.3	96.3	95.6		
3-year	81.0	89.9	94.0	93.7	91.4	91.7	93.4	96.5	96.2	95.8	95.0	96.2	95.7	95.5	95.3	95.9	96.2	95.8			
4-year	80.3	89.2	94.0	93.1	90.8	90.4	92.8	95.8	95.5	95.0	94.7	96.2	95.2	95.5	95.3	95.9	96.2				
5-year	80.2	89.2	93.9	92.4	90.6	89.8	92.5	95.5	95.2	94.6	94.7	96.2	95.2	95.3	95.3	95.6					
6-year	79.9	89.2	93.0	92.4	90.6	88.9	92.3	95.4	94.5	94.4	94.6	95.9	95.0	95.0	95.3						
7-year	79.8	89.2	92.9	92.4	90.2	88.9	92.3	95.4	94.3	94.2	94.2	95.8	94.9	94.9							
8-year	79.1	89.2	92.9	92.2	89.7	88.4	91.5	95.4	94.3	93.2	94.1	95.8	94.6								
9-year	78.8	89.2	92.2	91.8	89.3	87.5	91.5	95.1	94.3	93.2	93.7	95.8									
10-year	77.5	89.0	92.2	91.6	89.2	87.1	91.3	94.6	94.3	93.0	93.6										
11-year	76.9	89.0	91.9	91.6	88.8	86.7	90.5	94.6	94.2	92.8											
12-year	76.5	88.9	91.7	91.6	88.7	86.7	90.5	94.0	94.0												
13-year	76.2	88.5	90.8	91.6	87.7	86.7	89.8	94.0													
14-year	74.5	87.8	89.3	90.8	87.7	86.7	88.9														
15-year	74.1	87.4	89.3	90.3	86.7	86.7															
16-year	73.8	87.3	88.7	89.3	85.5																
17-year	73.8	86.9	88.5	89.6																	
18-year	73.1	86.7	88.0																		
19-year	72.4	86.0																			
20-year	72.1																				
21-year	72.1																				
22-year	71.9																				
23-year	71.9																				
24-year	71.4																				

<sup>a</sup> Rates are from the SEER 9 areas.

<sup>b</sup> Rates are from the NCHS public use data file.

\* Incidence and death rates are per 100,000 and are age-adjusted to the 2000 U.S. standard population by 5-year age groups.

Survival rates are relative rates expressed as percents.

Table XXIV-6  
TESTIS CANCER (Invasive)

Percent Diagnosed With Cancer In 10, 20 and 30 Years and In Remaining Lifetime,  
 Given Cancer Free At Current Age By Race

Lifetime Risk (Percent) of Being Diagnosed (12 SEER Areas) With Cancer and  
 Lifetime Risk (Percent) of Dying (Total U.S.) From Cancer

1997-1999

All Races

Current Age	+10 yrs	+20 yrs	+30 yrs	Eventually
0	0.00	0.02	0.12	0.35
10	0.02	0.12	0.24	0.35
20	0.10	0.22	0.29	0.34
30	0.12	0.19	0.22	0.24
40	0.07	0.10	0.11	0.12
50	0.03	0.04	0.05	0.05
60	0.01	0.02	0.02	0.02

Lifetime Risk of Being Diagnosed = 0.35%  
 Lifetime Risk of Dying = 0.02%

Whites

Current Age	+10 yrs	+20 yrs	+30 yrs	Eventually
0	0.00	0.02	0.14	0.42
10	0.02	0.14	0.28	0.42
20	0.12	0.26	0.35	0.40
30	0.14	0.23	0.26	0.28
40	0.09	0.12	0.13	0.14
50	0.03	0.04	0.05	0.05
60	0.01	0.02	0.02	0.02

Lifetime Risk of Being Diagnosed = 0.42%  
 Lifetime Risk of Dying = 0.02%

Blacks

Current Age	+10 yrs	+20 yrs	+30 yrs	Eventually
0	0.00	0.01	0.02	0.09
10	0.00	0.02	0.05	0.09
20	0.01	0.05	0.06	0.08
30	0.03	0.05	0.06	0.07
40	0.02	0.03	0.03	0.04
50	0.01	0.02	0.02	0.02
60	0.00	0.00	0.01	0.01

Lifetime Risk of Being Diagnosed = 0.09%  
 Lifetime Risk of Dying = 0.01%

Table XXIV-7  
TESTIS CANCER (Invasive)

AGE-ADJUSTED SEER INCIDENCE AND U.S. DEATH RATES

By Race/Ethnicity and Sex

Incidence<sup>i</sup>

RACE/ETHNICITY	Rate 1992-1999	Trend 1992-1999
	Rate per 100,000 persons	EAPC (%)
	Males	Males
All Races	5.0	1.1
White	5.9	1.1
White Hispanic	3.6	1.2
White Non-Hispanic	6.5	1.3
Black	1.2	8.6★
Asian/Pacific Islander	2.1	1.7
Amer Ind/Alaska Nat	2.6	-
Hispanic <sup>⊗</sup>	3.4	1.5

Mortality<sup>❖</sup>

RACE/ETHNICITY	Rate 1992-1999	Trend 1992-1999
	Rate per 100,000 persons	EAPC (%)
	Males	Males
All Races	0.3	-0.4
White	0.3	-0.6
White Hispanic	0.3	-4.3
White Non-Hispanic	0.3	0.2
Black	0.1	2.4
Asian/Pacific Islander	0.1	-
Amer Ind/Alaska Nat	-	-
Hispanic <sup>⊗</sup>	0.3	-4.1

- The EAPC is the Estimated Annual Percent Change over the time interval.
- Statistic not shown. Rate based on less than 25 cases for the time interval. Trend based on less than 10 cases for at least one year within the time interval.
- <sup>i</sup> Incidence data are from the 12 SEER areas (San Francisco, Connecticut, Detroit, Hawaii, Iowa, New Mexico, Seattle, Utah, Atlanta, San Jose-Monterey, Los Angeles, and Alaska Native Registry).
- <sup>⊗</sup> Hispanic is not mutually exclusive from whites, blacks, Asian Pacific Islanders, and American Indians/Alaska Natives. Incidence data for Hispanics does not include cases from Detroit, Hawaii and Alaska Native Registry. For mortality, information is included for all states except Connecticut, Oklahoma, New York, and New Hampshire.
- <sup>❖</sup> Mortality data are analyzed from a public use file provided by the National Center for Health Statistics (NCHS).
- <sup>★</sup> The EAPC is significantly different from zero (p<.05).

Table XXIV-8  
TESTIS CANCER (Invasive)AGE-ADJUSTED SEER INCIDENCE RATES§ AND SEER DEATH RATESä  
By Registry and Race

	All Races, Males			White Males			Black Males		
	All	<50	50+	All	<50	50+	All	<50	50+
<u>SEER INCIDENCE RATES§, 1995-99</u>									
REGISTRY									
11 registries	5.1	6.3	1.8	6.0	7.5	2.0	1.4	1.5	-
9 registries	5.4	6.7	1.9	6.2	7.8	2.1	1.4	1.6	-
San Francisco-Oakland	5.4	6.6	2.3	6.8	8.3	2.9	-	-	-
Connecticut	5.8	7.3	1.9	6.4	8.1	2.1	-	-	-
Metropolitan Detroit	4.9	6.1	1.9	6.0	7.4	2.3	1.4	1.6	-
Hawaii	4.9	6.3	-	8.0	10.2	-	-	-	-
Iowa	5.8	7.2	2.3	6.0	7.4	2.3	-	-	-
New Mexico	5.0	6.3	-	5.3	6.8	-	-	-	-
Seattle-Puget Sound	6.2	7.9	1.9	7.0	8.8	2.0	-	-	-
Utah	5.7	7.4	-	5.8	7.6	-	-	-	-
Metropolitan Atlanta	3.8	4.8	-	4.8	6.1	-	1.7	2.0	-
San Jose-Monterey	5.4	6.5	2.4	6.3	7.6	2.7	-	-	-
Los Angeles	4.3	5.4	1.6	5.3	6.6	1.8	1.3	1.4	-
<u>SEER DEATH RATESä, 1995-99</u>									
REGISTRY									
11 registries	0.3	0.3	0.2	0.3	0.3	0.3	-	-	-
9 registries	0.2	0.3	0.2	0.3	0.3	0.2	-	-	-
San Francisco-Oakland	-	-	-	-	-	-	-	-	-
Connecticut	-	-	-	-	-	-	-	-	-
Metropolitan Detroit	0.3	-	-	0.3	-	-	-	-	-
Hawaii	-	-	-	-	-	-	-	-	-
Iowa	-	-	-	-	-	-	-	-	-
New Mexico	-	-	-	-	-	-	-	-	-
Seattle-Puget Sound	0.3	0.3	-	0.3	0.4	-	-	-	-
Utah	-	-	-	-	-	-	-	-	-
Metropolitan Atlanta	-	-	-	-	-	-	-	-	-
San Jose-Monterey	-	-	-	-	-	-	-	-	-
Los Angeles	0.3	0.3	-	0.3	0.4	-	-	-	-

Note: San Jose-Monterey and Los Angeles are new SEER areas as of 1992 and their data are only used in tables where indicated.  
§ SEER 9 areas. Incidence rates are per 100,000 and are age-adjusted to the 2000 U.S. standard population by 5-year age groups.

ä NCHS public use data file. Death rates are per 100,000 and are age-adjusted to the 2000 U.S. standard population by 5-year age groups.

- Statistic could not be calculated or populations are inadequate.



Table XXIV-9  
TESTIS CANCER (Invasive)AVERAGE ANNUAL AGE-ADJUSTED CANCER DEATH<sup>ä</sup> RATES BY STATE, 1995-99

All Races, Males

State	Rate	SE	Rank	PD
TOTAL U.S.	0.3	0.01		
High Five States				
South Dakota	0.4*	0.16	(01)	33.3
Vermont	0.4*	0.16	(02)	33.3
Wyoming	0.4*	0.19	(03)	33.3
Montana	0.4*	0.13	(04)	33.3
Rhode Island	0.4*	0.12	(05)	33.3
Low Five States				
Utah	0.2*	0.05	(47)	-33.3
Georgia	0.1⊕*	0.03	(48)	-66.7
Missouri	0.1⊕*	0.03	(49)	-66.7
North Dakota	0.1*	0.10	(50)	-66.7
District of Columbia	0.1*	0.09	(51)	-66.7

State	Rate	SE	Rank	PD	State	Rate	SE	Rank	PD
Alabama	0.2*	0.05	(38)	-33.3	Montana	0.4*	0.13	(04)	33.3
Alaska	0.2*	0.12	(36)	-33.3	Nebraska	0.3	0.09	(16)	0.0
Arizona	0.3	0.05	(24)	0.0	Nevada	0.3	0.09	(13)	0.0
Arkansas	0.3	0.08	(10)	0.0	New Hampshire	0.3	0.10	(14)	0.0
California	0.3	0.02	(17)	0.0	New Jersey	0.2*	0.03	(44)	-33.3
Colorado	0.2*	0.05	(40)	-33.3	New Mexico	0.2*	0.08	(34)	-33.3
Connecticut	0.2*	0.05	(45)	-33.3	New York	0.2*	0.02	(32)	-33.3
Delaware	0.2*	0.10	(46)	-33.3	North Carolina	0.2*	0.04	(42)	-33.3
District of Columbia	0.1*	0.09	(51)	-66.7	North Dakota	0.1*	0.10	(50)	-66.7
Florida	0.3	0.03	(11)	0.0	Ohio	0.3	0.03	(20)	0.0
Georgia	0.1⊕*	0.03	(48)	-66.7	Oklahoma	0.3	0.06	(29)	0.0
Hawaii	0.3	0.09	(27)	0.0	Oregon	0.3	0.07	(12)	0.0
Idaho	0.2*	0.09	(35)	-33.3	Pennsylvania	0.2*	0.03	(30)	-33.3
Illinois	0.2*	0.03	(43)	-33.3	Rhode Island	0.4*	0.12	(05)	33.3
Indiana	0.3	0.05	(21)	0.0	South Carolina	0.3	0.05	(26)	0.0
Iowa	0.3	0.06	(25)	0.0	South Dakota	0.4*	0.16	(01)	33.3
Kansas	0.2*	0.06	(37)	-33.3	Tennessee	0.2*	0.04	(33)	-33.3
Kentucky	0.3	0.06	(19)	0.0	Texas	0.3	0.02	(28)	0.0
Louisiana	0.2*	0.05	(41)	-33.3	Utah	0.2*	0.05	(47)	-33.3
Maine	0.3	0.10	(08)	0.0	Vermont	0.4*	0.16	(02)	33.3
Maryland	0.3	0.05	(22)	0.0	Virginia	0.2*	0.04	(39)	-33.3
Massachusetts	0.4*	0.05	(06)	33.3	Washington	0.3	0.05	(18)	0.0
Michigan	0.3	0.04	(15)	0.0	West Virginia	0.3	0.09	(07)	0.0
Minnesota	0.2*	0.05	(31)	-33.3	Wisconsin	0.3	0.05	(23)	0.0
Mississippi	0.3	0.08	(09)	0.0	Wyoming	0.4*	0.19	(03)	33.3
Missouri	0.1⊕*	0.03	(49)	-66.7					

ä NCHS public use data file. Rates are per 100,000 and are age-adjusted to the 2000 U.S. standard population by 5-year age groups.

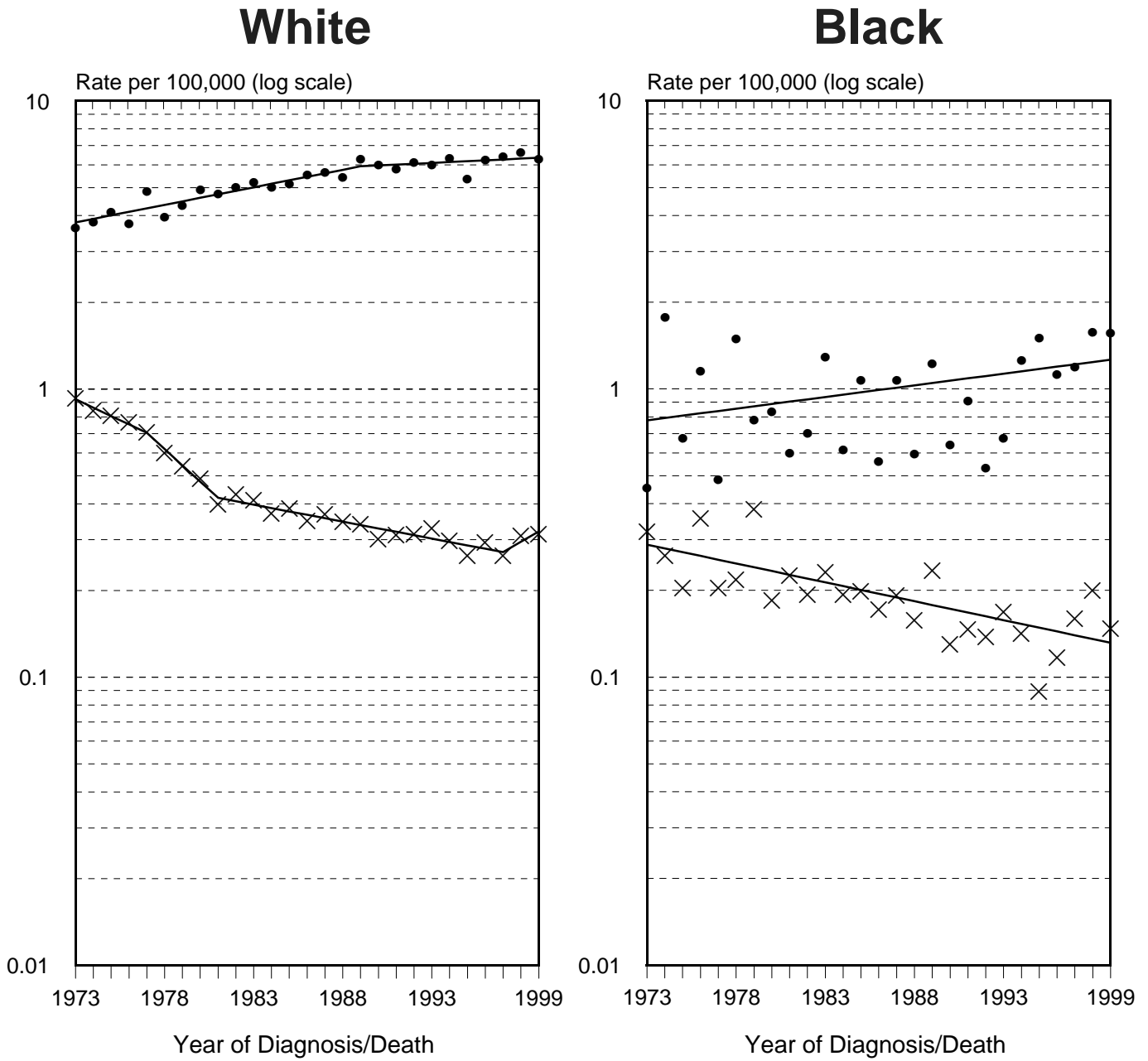
SE Standard error of the rate.

PD Percent difference between state rate and total U.S. rate.

\* Absolute percent difference between state rate and total U.S. rate is 15% or more.

⊕ Difference between state rate and total U.S. rate is statistically significant ( $p < .0002$ ).

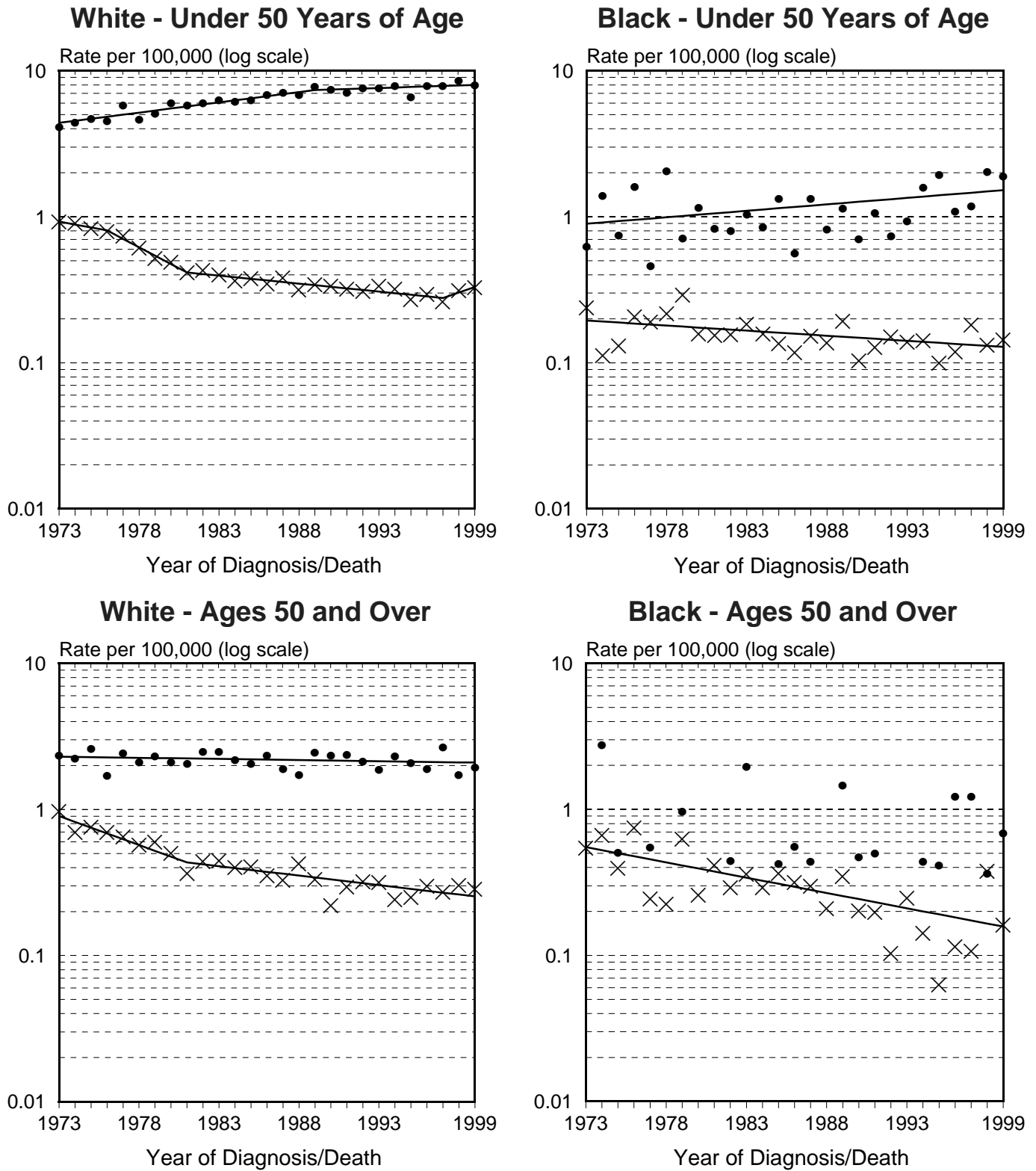
# SEER Incidence and U.S. Death Rates<sup>+</sup> Testis By Race



• Incidence × Mortality

<sup>+</sup> Source: SEER 9 areas and NCHS public use data file. Rates are age-adjusted to the 2000 U.S. standard million population by 5-year age groups. Regression lines are calculated using the Joinpoint Regression Program.

# SEER Incidence and U.S. Death Rates<sup>+</sup> Testis, By Age and Race



<sup>+</sup> Source: SEER 9 areas and NCHS public use data file. Rates are age-adjusted to the 2000 U.S. standard million population by 5-year age groups. Regression lines are calculated using the Joinpoint Regression Program. Regression line could not be calculated for the Black Male 50+ Incidence Rates due to years with a rate of zero.