

Table XXVII-1
URINARY BLADDER CANCER (Invasive and In Situ)

TRENDS IN SEER INCIDENCE^a AND U.S. MORTALITY^b USING THE JOINPOINT REGRESSION PROGRAM, 1975-2004
WITH UP TO THREE JOINPOINTS BY RACE AND SEX

		<u>Joinpoint Segment 1</u>		<u>Joinpoint Segment 2</u>		<u>Joinpoint Segment 3</u>		<u>Joinpoint Segment 4</u>	
		Year	APC	Year	APC	Year	APC	Year	APC
<u>SEER Cancer Incidence^a</u>									
All Races	Male and Female	1975-1987	0.8*	1987-1996	-0.2	1996-1999	1.7	1999-2004	-1.1*
All Races	Male	1975-1987	1.0*	1987-1995	-0.6	1995-2000	1.1	2000-2004	-1.6*
All Races	Female	1975-2004	0.1*						
White	Male and Female	1975-1987	1.0*	1987-1996	-0.1	1996-2000	1.4	2000-2004	-1.3*
White	Male	1975-1987	1.2*	1987-1995	-0.6	1995-2000	1.2	2000-2004	-1.6*
White	Female	1975-2004	0.3*						
Black	Male and Female	1975-2004	0.2						
Black	Male	1975-2004	0.1						
Black	Female	1975-2004	0.4						
<u>SEER Delay-Adjusted Incidence^a</u>									
All Races	Male and Female	1975-1987	0.8*	1987-1996	-0.2	1996-1999	1.7	1999-2004	-0.7
All Races	Male	1975-1987	1.0*	1987-1996	-0.5	1996-1999	2.0	1999-2004	-0.9
All Races	Female	1975-2004	0.2*						
White	Male and Female	1975-1987	1.0*	1987-1996	0.0	1996-2000	1.5	2000-2004	-0.8
White	Male	1975-1987	1.2*	1987-1995	-0.5	1995-2000	1.3	2000-2004	-1.0
White	Female	1975-2004	0.4*						
Black	Male and Female	1975-2004	0.3						
Black	Male	1975-2004	0.2						
Black	Female	1975-2004	0.5						
<u>U.S. Cancer Mortality^b</u>									
All Races	Male and Female	1975-1977	0.0	1977-1987	-2.1*	1987-2004	-0.2*		
All Races	Male	1975-1983	-1.4*	1983-1987	-2.7*	1987-1993	0.1	1993-2004	-0.6*
All Races	Female	1975-1986	-1.7*	1986-2004	-0.4*				
White	Male and Female	1975-1977	0.1	1977-1987	-2.1*	1987-2004	0.0		
White	Male	1975-1987	-1.8*	1987-2004	-0.3*				
White	Female	1975-1986	-1.8*	1986-2004	-0.2*				
Black	Male and Female	1975-2004	-1.2*						
Black	Male	1975-2004	-1.2*						
Black	Female	1975-2004	-0.8*						

Joinpoint Regression Program Version 3.0, April 2005, National Cancer Institute. (<http://srab.cancer.gov/joinpoint/>).

The APC is the Annual Percent Change based on rates age-adjusted to the 2000 US Std Population (19 age groups - Census P25-1130).

^a Trends are from the SEER 9 areas (San Francisco, Connecticut, Detroit, Hawaii, Iowa, New Mexico, Seattle, Utah, and Atlanta).

^b Trends are from the NCHS public use data file for the total US.

* The APC is significantly different from zero (p<.05).

Table XXVII-2
 URINARY BLADDER CANCER (Invasive and *In Situ*)

AGE ADJUSTED SEER INCIDENCE^a RATES BY YEAR, RACE AND SEX

	All Races			Whites			Blacks		
	Total	Males	Females	Total	Males	Females	Total	Males	Females
<u>AGE-ADJUSTED RATES</u>									
YEAR OF DIAGNOSIS:									
1975	19.3	34.3	8.9	20.2	36.4	9.2	10.6	16.3	6.3
1976	19.7	34.4	9.4	20.7	36.7	9.7	12.5	18.2	8.6
1977	19.0	33.4	8.9	20.0	35.6	9.2	13.5	22.7	7.1
1978	20.0	35.4	9.4	21.1	37.9	9.7	11.7	19.4	6.4
1979	20.0	35.3	9.4	21.3	38.2	9.8	10.3	15.6	6.5
1980	20.4	37.1	8.9	21.5	39.8	9.1	13.3	18.2	10.0
1981	20.7	36.3	9.7	22.0	38.8	10.3	11.5	20.6	5.5
1982	20.1	35.8	9.5	21.4	38.3	10.2	12.2	21.8	5.6
1983	20.1	36.0	9.0	21.3	38.7	9.4	12.2	18.7	7.6
1984	20.8	37.7	9.2	22.3	40.9	9.6	11.4	18.6	6.2
1985	20.7	36.4	9.9	22.1	39.3	10.3	13.0	20.3	8.0
1986	21.0	38.0	9.4	22.4	40.8	9.9	12.9	22.2	6.6
1987	21.6	39.5	9.2	23.2	42.8	9.6	13.3	21.8	7.5
1988	20.9	38.1	9.0	22.7	41.9	9.7	11.3	18.0	6.4
1989	21.0	37.4	9.6	22.7	40.9	10.2	11.3	17.3	7.2
1990	21.1	37.5	9.6	22.6	40.7	10.0	12.7	18.6	8.7
1991	20.9	37.6	9.3	22.7	41.2	9.9	12.9	19.7	8.5
1992	21.2	37.5	9.8	22.9	40.7	10.5	12.5	20.8	6.9
1993	21.2	37.6	9.7	22.8	40.5	10.4	14.1	24.4	7.8
1994	20.8	36.8	9.4	22.6	40.2	10.2	12.3	20.2	6.9
1995	20.6	36.2	9.6	22.4	39.5	10.3	11.8	18.1	7.4
1996	20.8	36.5	9.5	22.6	39.9	10.3	12.2	19.6	7.3
1997	21.0	37.0	9.5	22.9	40.5	10.2	12.4	19.8	7.9
1998	21.5	38.4	9.4	23.5	42.0	10.2	11.8	20.2	6.4
1999	21.7	38.1	10.0	23.6	41.5	10.6	14.5	22.4	9.4
2000	21.7	38.7	9.5	23.8	42.3	10.2	13.1	20.2	8.5
2001	21.5	37.9	9.6	23.8	41.8	10.5	11.3	18.1	7.0
2002	21.0	36.6	9.6	23.1	40.1	10.5	12.2	17.4	8.6
2003	21.1	36.9	9.5	23.2	40.6	10.4	12.3	20.3	6.9
2004	20.6	36.3	9.1	22.6	39.8	9.9	12.6	20.2	8.0
1975-2004	20.8	36.9	9.4	22.4	40.1	10.0	12.4	19.8	7.5

^a SEER 9 areas (San Francisco, Connecticut, Detroit, Hawaii, Iowa, New Mexico, Seattle, Utah, and Atlanta). Rates are per 100,000 and are age-adjusted to the 2000 US Std Population (19 age groups - Census P25-1130).
 - Statistic not shown. Rate based on less than 16 cases for the time interval.

Table XXVII-3
URINARY BLADDER CANCER (Invasive)

AGE-ADJUSTED U.S. DEATH^a RATES BY YEAR, RACE AND SEX

	All Races			Whites			Blacks		
	Total	Males	Females	Total	Males	Females	Total	Males	Females
<u>AGE-ADJUSTED RATES</u>									
YEAR OF DEATH:									
1975	5.5	9.8	2.8	5.6	10.1	2.7	5.0	6.9	3.6
1976	5.6	9.8	2.9	5.6	10.0	2.8	5.3	7.8	3.5
1977	5.5	9.7	2.9	5.6	9.9	2.8	5.2	7.6	3.6
1978	5.4	9.5	2.9	5.5	9.8	2.8	4.9	7.2	3.4
1979	5.2	9.3	2.7	5.3	9.6	2.7	5.0	7.6	3.3
1980	5.2	9.2	2.7	5.2	9.5	2.7	4.7	6.2	3.7
1981	5.1	9.0	2.7	5.1	9.3	2.6	4.9	7.2	3.4
1982	5.0	8.9	2.6	5.0	9.2	2.5	4.9	6.8	3.6
1983	4.9	8.8	2.5	4.9	9.0	2.5	4.7	7.2	3.2
1984	4.7	8.5	2.5	4.8	8.7	2.4	4.7	6.9	3.4
1985	4.7	8.4	2.4	4.7	8.7	2.4	4.5	6.9	3.0
1986	4.5	8.1	2.4	4.6	8.4	2.3	4.2	5.8	3.3
1987	4.4	7.9	2.3	4.5	8.1	2.3	4.4	6.5	3.1
1988	4.4	7.8	2.4	4.5	8.0	2.3	4.3	5.9	3.3
1989	4.5	8.0	2.4	4.5	8.2	2.3	4.6	7.0	3.2
1990	4.5	8.0	2.4	4.6	8.2	2.4	4.4	6.4	3.2
1991	4.4	7.9	2.3	4.5	8.1	2.3	4.4	6.6	3.1
1992	4.5	7.9	2.4	4.5	8.1	2.4	4.3	6.7	3.1
1993	4.5	8.1	2.3	4.5	8.3	2.3	4.2	6.4	2.9
1994	4.5	7.9	2.4	4.5	8.1	2.4	4.3	6.4	3.2
1995	4.4	7.8	2.3	4.4	8.1	2.2	4.0	5.8	3.1
1996	4.4	7.8	2.4	4.5	8.1	2.3	4.2	5.9	3.1
1997	4.4	7.6	2.4	4.5	7.9	2.4	4.0	5.9	3.0
1998	4.4	7.7	2.3	4.5	8.0	2.3	3.9	5.6	3.0
1999	4.4	7.7	2.3	4.5	7.9	2.2	4.0	5.8	3.0
2000	4.3	7.6	2.3	4.5	7.9	2.3	3.7	5.7	2.7
2001	4.3	7.6	2.3	4.5	7.9	2.2	3.7	5.1	2.9
2002	4.4	7.5	2.4	4.5	7.8	2.3	3.9	5.5	3.0
2003	4.3	7.4	2.2	4.4	7.7	2.2	3.7	5.4	2.7
2004	4.4	7.6	2.2	4.5	8.0	2.2	3.6	5.0	2.8
1975-2004	4.6	8.2	2.4	4.7	8.5	2.4	4.3	6.3	3.2

^a NCHS public use data file for the total US. Rates are per 100,000 and are age-adjusted to the 2000 US Std Population (19 age groups - Census P25-1130).

- Statistic not shown. Rate based on less than 16 cases for the time interval.

Table XXVII-4
URINARY BLADDER CANCER (Invasive and *In Situ*)

SEER INCIDENCE^a AND U.S. DEATH^b RATES, AGE-ADJUSTED AND AGE-SPECIFIC RATES, BY RACE AND SEX

	All Races			Whites			Blacks		
	Total	Males	Females	Total	Males	Females	Total	Males	Females
<u>SEER INCIDENCE</u>									
<u>AGE AT DIAGNOSIS</u>									
AGE-ADJUSTED RATES, 2000-2004									
All ages	21.1	37.3	9.4	23.0	40.5	10.1	12.6	20.3	7.6
Under 65	6.2	9.7	2.9	6.9	10.7	3.2	3.8	6.0	2.1
65 and over	124.3	228.1	54.1	134.1	246.9	57.4	73.4	118.9	45.8
All ages(IARC world std) ^c	12.6	21.5	5.6	13.8	23.4	6.1	7.5	11.9	4.3
AGE-SPECIFIC RATES, 2000-2004									
<1	-	-	-	-	-	-	-	-	-
1-4	-	-	-	-	-	-	-	-	-
5-9	-	-	-	-	-	-	-	-	-
10-14	-	-	-	-	-	-	-	-	-
15-19	0.1	0.1	-	0.1	-	-	-	-	-
20-24	0.2	0.3	0.2	0.2	0.3	0.2	-	-	-
25-29	0.4	0.5	0.3	0.5	0.6	0.4	-	-	-
30-34	0.9	1.2	0.5	1.0	1.3	0.6	0.6	-	-
35-39	1.6	2.3	1.0	1.8	2.5	1.1	1.2	1.9	-
40-44	3.6	5.2	2.0	4.0	5.6	2.2	2.6	3.5	1.7
45-49	7.6	11.5	3.7	8.4	12.5	4.2	5.1	7.7	2.8
50-54	15.3	23.8	7.1	16.9	26.0	7.9	10.0	16.1	4.8
55-59	29.5	46.8	13.3	32.5	51.0	14.8	19.4	31.9	9.0
60-64	49.9	80.7	21.8	55.7	89.5	24.2	27.1	41.0	15.9
65-69	80.0	132.8	34.8	88.7	146.1	38.3	47.0	76.2	24.7
70-74	114.6	199.0	47.4	125.4	216.9	51.1	64.8	102.4	38.6
75-79	146.1	268.6	60.2	157.6	290.3	63.8	83.8	138.3	50.2
80-84	164.4	313.2	71.8	174.4	335.8	74.2	99.1	160.3	66.0
85+	157.7	330.0	79.6	165.3	353.3	81.6	101.7	165.7	76.1
<u>U.S. MORTALITY</u>									
<u>AGE AT DEATH</u>									
AGE-ADJUSTED RATES, 2000-2004									
All ages	4.3	7.5	2.3	4.5	7.9	2.3	3.7	5.3	2.8
Under 65	0.7	1.1	0.4	0.8	1.2	0.4	0.7	0.9	0.5
65 and over	29.1	51.6	15.3	30.1	54.0	15.3	24.7	35.7	18.8
All ages(IARC world std) ^c	2.2	3.7	1.1	2.3	3.9	1.1	1.9	2.7	1.4
AGE-SPECIFIC RATES, 2000-2004									
<1	-	-	-	-	-	-	-	-	-
1-4	-	-	-	-	-	-	-	-	-
5-9	-	-	-	-	-	-	-	-	-
10-14	-	-	-	-	-	-	-	-	-
15-19	-	-	-	-	-	-	-	-	-
20-24	-	-	-	-	-	-	-	-	-
25-29	-	-	-	-	-	-	-	-	-
30-34	0.0	0.0	0.0	0.0	0.0	-	-	-	-
35-39	0.2	0.2	0.1	0.2	0.2	0.1	0.1	-	-
40-44	0.4	0.4	0.3	0.4	0.4	0.3	0.5	0.7	0.4
45-49	0.8	1.2	0.4	0.8	1.3	0.4	0.9	1.2	0.7
50-54	1.7	2.6	0.9	1.8	2.7	0.8	1.8	2.4	1.2
55-59	3.6	5.6	1.7	3.7	5.9	1.7	3.4	4.4	2.6
60-64	6.8	10.8	3.2	7.2	11.5	3.2	5.5	7.6	3.8
65-69	11.8	19.0	5.6	12.4	20.2	5.5	10.0	13.1	7.6
70-74	19.2	31.2	9.7	20.1	32.8	9.6	15.9	21.5	12.2
75-79	30.2	51.9	14.9	31.3	54.1	14.8	25.8	38.5	18.3
80-84	45.0	80.2	23.6	46.2	83.3	23.5	39.3	58.9	29.2
85+	67.4	132.0	39.7	69.2	138.1	39.6	56.2	83.4	45.7

^a SEER 17 areas. Rates are per 100,000 and are age-adjusted to the 2000 US Std Population (19 age groups - Census P25-1130), unless noted.

^b NCHS public use data file for the total US. Rates are per 100,000 and are age-adjusted to the 2000 US Std Population (19 age groups - Census P25-1130), unless noted.

^c Rates are per 100,000 and are age-adjusted to the IARC world standard population.

- Statistic not shown. Rate based on less than 16 cases for the time interval.

Table XXVII-5
URINARY BLADDER CANCER (Invasive and *In Situ*)

SURVIVAL RATES, BY RACE, SEX, DIAGNOSIS YEAR, STAGE AND AGE

	All Races			Whites			Blacks		
	Total	Males	Females	Total	Males	Females	Total	Males	Females
5-YR RELATIVE SURVIVAL RATES									
YEAR OF DIAGNOSIS:									
1960-1963 ^a	-	-	-	53	53	53	24	24	24
1970-1973 ^a	-	-	-	61	61	60	36	38	27
1975-1977 ^b	73.5	75.0	69.6	74.5	75.6	71.5	50.6	56.8	38.8 ^f
1978-1980 ^b	76.0	77.2	72.7	76.9	77.6	74.8	55.6	64.3	40.8 ^f
1981-1983 ^b	78.6	79.9	75.0	79.3	80.4	76.4	60.3	65.7	48.4 ^f
1984-1986 ^b	78.2	79.5	74.6	78.7	79.9	75.5	60.8	63.7	54.2 ^f
1987-1989 ^b	80.6	82.8	74.1	81.4	83.4	75.4	63.3	68.0	54.0 ^f
1990-1992 ^b	80.9	83.3	74.1	81.9	84.1	75.3	64.7	67.6	59.9
1993-1995 ^b	81.4	83.0	76.9	82.2	83.4	78.8	61.8	69.0	46.8
1996-2003 ^b	80.6 ^e	81.6 ^e	77.8 ^e	81.3 ^e	82.1 ^e	79.0 ^e	65.0 ^e	68.3 ^e	57.9 ^e
5-YR PERIOD SURVIVAL RATES^{cd}									
YEAR OF DIAGNOSIS:									
1996-2003	79.1	80.5	75.1	79.8	80.8	76.7	64.4	69.8	54.9
STAGE DISTRIBUTION (%) 1996-2003^c									
All Stages									
Number of cases	65,633	48,935	16,698	59,375	44,558	14,817	3,062	1,957	1,105
Percent	100%	100%	100%	100%	100%	100%	100%	100%	100%
Localized	75	76	71	75	77	72	60	64	51
Regional	19	18	21	18	18	20	28	25	34
Distant	4	3	5	3	3	5	6	5	9
Unstaged	3	3	4	3	3	4	6	6	5
5-YR RELATIVE SURVIVAL RATES, 1996-2003^c									
AGE AT DIAGNOSIS:									
<45	91.2	91.5	90.5	92.2	92.4	91.8	80.7	82.7	76.9 ^f
45-54	85.2	85.8	83.5	86.1	86.5	85.0	70.2	73.4	59.4 ^f
55-64	84.8	85.3	83.2	85.5	85.8	84.3	73.1	76.4	63.6
65-74	79.8	80.9	76.5	80.4	81.1	78.1	60.5	65.8	51.3
75+	71.0	73.3	65.9	71.8	73.9	66.9	51.3	52.0	47.8
Under 65	85.8	86.2	84.3	86.5	86.8	85.6	73.4	76.5	64.7
65 and over	75.7	77.6	70.7	76.4	78.0	72.0	56.1	59.9	50.4
STAGE:									
All Stages	79.5	80.9	75.3	80.2	81.4	76.6	63.9	68.2	55.5
Localized	92.1	92.4	91.3	92.3	92.5	91.7	84.3	85.7	80.0
Regional	44.6	46.6	39.5	45.3	47.1	40.3	37.6	40.6	32.4
Distant	6.4	6.1	6.6	6.1	6.4	5.5	9.0	2.9	15.0
Unstaged	59.3	63.6	47.7	59.8	63.6	49.4	42.5 ^f	49.9 ^f	25.8 ^f

^a Rates are based on End Results data from a series of hospital registries and one population-based registry.

^b Rates are from the SEER 9 areas (San Francisco, Connecticut, Detroit, Hawaii, Iowa, New Mexico, Seattle, Utah, Atlanta).

Rates are based on follow-up of patients into 2004.

^c Rates are from the SEER 17 areas (San Francisco, Connecticut, Detroit, Hawaii, Iowa, New Mexico, Seattle, Utah, Atlanta, San Jose-Monterey, Los Angeles, Alaska Native Registry, Rural Georgia, California excluding SF/SJM/LA, Kentucky, Louisiana and New Jersey). California excluding SF/SJM/LA, Kentucky, Louisiana, and New Jersey contribute cases for diagnosis years 2000-2003. The remaining 13 SEER Areas contribute cases for the entire period 1996-2003. Rates are based on follow-up of patients into 2004.

^d Period survival provides a more up-to-date estimate of survival by piecing together the most recent conditional survival estimates from several cohorts. It is computed here using three calendar year blocks (2001-2003: 0-1 year survival), (2000-2002: 1-2 year survival), (1999-2001: 2-3 year survival), (1998-2000: 3-4 year survival), (1997-1999: 4-5 years survival).

^e The difference in rates between 1975-1977 and 1996-2003 is statistically significant ($p < .05$).

^f The standard error of the survival rate is between 5 and 10 percentage points.

^g The standard error of the survival rate is greater than 10 percentage points.

- Statistic could not be calculated due to fewer than 16 cases during the time period.

Table XXVII-6
URINARY BLADDER CANCER

SURVIVAL RATES (Invasive and *In Situ*)^a

By Year of Diagnosis

All Races, Males and Females

Year of Diagnosis

	1975- 1979	1980- 1984	1985	1986	1987	1988	1989	1990	1991	1992	1993	1994	1995	1996	1997	1998	1999	2000	2001	2002	2003
Relative Survival Rates (SEER ^b)																					
1-year	87.5	89.5	89.3	90.3	90.4	90.9	91.4	90.1	90.3	90.5	91.0	91.3	91.1	90.1	91.7	91.2	90.5	91.4	91.4	90.4	90.9
2-year	81.3	84.5	84.5	85.6	85.9	85.9	86.8	86.2	85.7	85.6	86.5	86.7	87.1	86.0	86.6	86.7	85.5	86.9	86.9	86.5	
3-year	78.4	81.7	81.3	82.7	83.3	83.9	84.0	83.4	83.6	83.2	84.1	84.8	84.6	83.9	83.6	83.8	82.9	84.2	85.3		
4-year	76.0	79.6	78.6	80.7	81.6	82.1	82.4	82.1	82.4	82.5	82.5	82.6	82.4	81.9	81.4	82.1	81.2	82.5			
5-year	74.5	78.1	77.4	79.1	80.4	80.3	81.0	81.3	80.8	80.4	81.0	81.3	82.0	80.5	79.5	80.1	79.4				
6-year	73.1	76.6	76.5	78.5	78.6	78.7	80.0	80.1	79.7	79.1	79.5	79.7	80.2	79.6	78.0	78.6					
7-year	71.5	75.5	75.4	77.8	77.7	77.5	78.5	79.0	77.4	77.2	78.0	78.2	78.5	79.1	77.1						
8-year	70.5	74.6	74.6	76.8	76.2	76.8	76.6	77.1	75.9	76.1	77.5	77.7	77.6	77.9							
9-year	69.4	73.3	74.2	76.1	74.6	75.9	76.0	75.2	75.0	75.5	76.3	76.9	76.3								
10-year	67.9	72.5	73.2	75.1	73.4	75.4	74.7	73.4	73.9	74.5	75.7	76.7									
11-year	66.5	71.7	73.1	73.2	73.2	74.0	73.5	72.1	73.3	73.7	75.1										
12-year	65.8	70.9	71.0	72.0	72.2	73.4	72.2	70.9	72.8	73.6											
13-year	65.3	70.4	70.0	70.9	71.6	71.4	72.0	70.7	72.0												
14-year	64.5	69.3	68.5	69.2	70.5	69.7	71.7	70.2													
15-year	64.0	68.4	67.3	68.7	69.6	68.4	71.1														
16-year	63.4	67.1	66.3	67.2	68.7	66.7															
17-year	63.1	66.5	65.3	67.2	67.5																
18-year	63.0	65.9	65.3	67.1																	
19-year	63.0	65.5	65.3																		
20-year	62.7	65.4																			

^a Survival rates are relative rates expressed as percents.

^b Rates are from the SEER 9 areas (San Francisco, Connecticut, Detroit, Hawaii, Iowa, New Mexico, Seattle, Utah, and Atlanta).

Table XXVII-7
URINARY BLADDER CANCER

SURVIVAL RATES (Invasive and *In Situ*)^a

By Year of Diagnosis

All Races, Males

Year of Diagnosis

	1975- 1979	1980- 1984	1985	1986	1987	1988	1989	1990	1991	1992	1993	1994	1995	1996	1997	1998	1999	2000	2001	2002	2003
Relative Survival Rates (SEER ^b)																					
1-year	89.5	90.7	91.2	91.7	92.2	92.2	93.3	92.1	91.7	92.1	92.6	93.1	92.6	91.5	93.2	92.9	92.1	92.7	92.0	92.5	92.5
2-year	83.3	86.0	86.2	87.1	88.1	87.0	89.3	88.3	87.8	87.8	88.9	88.4	88.6	87.4	88.4	88.3	87.1	88.3	87.4	89.1	
3-year	80.2	83.3	83.2	83.7	85.1	85.3	86.8	85.8	86.0	85.8	86.5	86.5	86.1	85.2	85.5	85.1	84.5	85.2	86.0		
4-year	77.7	81.1	80.2	81.6	83.5	83.8	85.2	84.4	84.9	85.2	84.5	84.0	83.6	82.9	83.0	83.1	82.5	83.3			
5-year	75.8	79.4	78.7	79.9	82.6	81.9	83.9	83.7	82.9	83.1	82.7	82.7	83.3	81.5	80.8	80.9	80.5				
6-year	74.3	78.0	77.9	79.4	81.0	80.6	82.3	82.3	81.4	81.9	81.7	80.9	81.6	80.6	79.0	79.7					
7-year	72.6	76.9	76.6	78.3	79.8	79.5	80.3	80.8	78.5	79.8	79.9	79.2	80.0	79.7	78.0						
8-year	71.3	76.0	75.5	77.5	78.1	78.8	78.0	78.8	76.8	78.1	79.6	78.6	79.0	78.5							
9-year	70.0	74.7	75.1	76.4	76.3	77.8	77.3	76.5	75.7	77.1	79.0	78.1	77.1								
10-year	68.4	73.8	74.2	75.6	75.2	77.2	75.7	75.2	74.3	76.1	78.4	78.0									
11-year	66.8	73.2	74.1	74.0	74.9	75.8	74.9	73.6	73.8	75.2	78.0										
12-year	66.0	72.3	71.4	72.8	73.3	75.8	73.1	72.4	73.6	74.6											
13-year	65.3	71.8	70.6	71.4	73.0	73.6	72.1	72.4	72.8												
14-year	64.6	70.5	68.9	70.0	72.5	71.9	71.4	71.8													
15-year	64.3	69.4	67.9	69.5	71.9	70.5															
16-year	63.3	67.8	66.6	67.3	71.3	68.7															
17-year	63.0	67.2	65.7	67.3	70.4																
18-year	62.8	66.6	65.7	67.1																	
19-year	62.8	66.5	65.7																		
20-year	62.4	66.4																			

^a Survival rates are relative rates expressed as percents.

^b Rates are from the SEER 9 areas (San Francisco, Connecticut, Detroit, Hawaii, Iowa, New Mexico, Seattle, Utah, and Atlanta).

Table XXVII-8
URINARY BLADDER CANCER

SURVIVAL RATES (Invasive and *In Situ*)^a

By Year of Diagnosis

All Races, Females

Year of Diagnosis

	1975-1979	1980-1984	1985	1986	1987	1988	1989	1990	1991	1992	1993	1994	1995	1996	1997	1998	1999	2000	2001	2002	2003
Relative Survival Rates (SEER ^b)																					
1-year	82.0	85.8	84.2	86.3	84.6	87.1	85.8	84.3	85.9	85.8	86.4	86.2	87.1	86.0	87.0	86.4	86.1	87.7	89.7	84.6	86.1
2-year	75.9	80.0	79.8	81.5	79.1	82.5	79.7	79.8	79.6	79.3	79.8	81.9	83.1	81.9	81.2	81.9	81.0	82.7	85.4	79.0	
3-year	73.5	77.3	76.1	79.6	77.8	79.4	75.9	76.4	76.6	75.6	77.4	80.1	80.4	80.2	78.1	80.2	78.2	81.3	83.1		
4-year	71.6	75.4	74.4	78.2	75.4	77.1	74.7	75.2	75.1	74.7	77.0	78.3	79.0	78.9	76.7	78.8	77.1	80.2			
5-year	70.9	74.3	73.2	76.1	73.7	75.5	73.1	74.2	75.0	73.1	75.8	77.1	77.6	77.9	75.8	77.6	76.6				
6-year	69.9	72.9	72.6	75.4	71.4	73.2	73.1	73.6	74.9	71.2	73.4	76.4	76.2	76.8	75.1	75.5					
7-year	68.7	71.5	72.0	75.4	70.7	71.7	72.9	73.6	73.9	70.1	72.7	75.4	74.4	76.8	74.5						
8-year	68.4	70.8	71.8	74.8	70.2	70.8	72.6	72.4	73.2	70.1	71.1	75.0	73.9	76.2							
9-year	67.8	69.5	70.9	74.8	69.4	70.0	72.2	71.6	72.9	70.1	68.9	73.4	73.5								
10-year	66.6	68.5	70.2	73.6	67.8	69.3	71.3	68.4	72.9	70.1	68.3	72.9									
11-year	65.9	67.7	70.0	71.2	67.2	69.0	69.5	67.4	72.1	69.2	66.9										
12-year	65.3	67.3	69.6	69.7	67.2	66.5	69.1	65.5	70.8	69.2											
13-year	65.3	66.6	68.3	69.4	66.3	65.2	69.1	65.2	69.7												
14-year	64.0	66.3	66.9	67.0	64.6	63.4	69.1	65.2													
15-year	63.2	65.8	65.6	66.6	62.7	62.3	69.1														
16-year	63.2	65.4	64.9	66.6	61.2	60.5															
17-year	63.1	64.6	64.0	66.6	59.4																
18-year	63.1	64.0	63.9	66.2																	
19-year	63.1	62.9	63.9																		
20-year	63.1	62.7																			

^a Survival rates are relative rates expressed as percents.

^b Rates are from the SEER 9 areas (San Francisco, Connecticut, Detroit, Hawaii, Iowa, New Mexico, Seattle, Utah, and Atlanta).

Table XXVII-9
 URINARY BLADDER CANCER (Invasive and In Situ)

Risk of Being Diagnosed With Cancer in 10, 20 and 30 Years, Lifetime Risk of Being Diagnosed with Cancer, and
 Lifetime Risk of Dying from Cancer Given Cancer Free At Current Age
 Both Sexes, 2002-2004 By Race/Ethnicity

Race/ Ethnicity	Current Age	Risk of Being Diagnosed with Cancer			Risk of Dying from Cancer	
		+10 yrs Percent (95% C.I.)	+20 yrs Percent (95% C.I.)	+30 yrs Percent (95% C.I.)	Eventually Percent (95% C.I.)	Eventually Percent (95% C.I.)
All Races	0	0.00 (0.00, 0.00)	0.00 (0.00, 0.00)	0.00 (0.00, 0.01)	2.35 (2.33, 2.37)	0.53 (0.52, 0.53)
	10	0.00 (0.00, 0.00)	0.00 (0.00, 0.00)	0.02 (0.02, 0.02)	2.38 (2.36, 2.40)	0.54 (0.53, 0.54)
	20	0.00 (0.00, 0.00)	0.02 (0.01, 0.02)	0.07 (0.07, 0.07)	2.39 (2.37, 2.41)	0.54 (0.53, 0.54)
	30	0.01 (0.01, 0.01)	0.07 (0.07, 0.07)	0.28 (0.27, 0.28)	2.41 (2.38, 2.43)	0.54 (0.54, 0.55)
	40	0.06 (0.05, 0.06)	0.27 (0.26, 0.27)	0.81 (0.79, 0.82)	2.43 (2.40, 2.45)	0.55 (0.54, 0.56)
	50	0.22 (0.21, 0.22)	0.77 (0.76, 0.78)	1.65 (1.63, 1.66)	2.44 (2.41, 2.46)	0.56 (0.55, 0.57)
	60	0.59 (0.58, 0.60)	1.52 (1.50, 1.54)	2.19 (2.17, 2.22)	2.37 (2.34, 2.39)	0.57 (0.56, 0.57)
	70	1.08 (1.06, 1.09)	1.86 (1.83, 1.88)	- (- , -)	2.06 (2.03, 2.08)	0.56 (0.55, 0.57)
80	1.12 (1.10, 1.14)	- (- , -)	- (- , -)	1.41 (1.38, 1.43)	0.50 (0.49, 0.51)	
White	0	0.00 (0.00, 0.00)	0.00 (0.00, 0.00)	0.00 (0.00, 0.01)	2.55 (2.53, 2.58)	0.56 (0.55, 0.56)
	10	0.00 (0.00, 0.00)	0.00 (0.00, 0.01)	0.02 (0.02, 0.02)	2.58 (2.56, 2.61)	0.56 (0.56, 0.57)
	20	0.00 (0.00, 0.00)	0.02 (0.02, 0.02)	0.08 (0.08, 0.08)	2.59 (2.56, 2.62)	0.56 (0.56, 0.57)
	30	0.01 (0.01, 0.02)	0.07 (0.07, 0.08)	0.30 (0.30, 0.31)	2.61 (2.58, 2.64)	0.57 (0.56, 0.57)
	40	0.06 (0.06, 0.06)	0.29 (0.29, 0.30)	0.89 (0.88, 0.91)	2.63 (2.60, 2.65)	0.58 (0.57, 0.58)
	50	0.24 (0.23, 0.24)	0.85 (0.84, 0.87)	1.81 (1.78, 1.83)	2.64 (2.61, 2.66)	0.58 (0.58, 0.59)
	60	0.65 (0.64, 0.66)	1.66 (1.64, 1.69)	2.37 (2.35, 2.40)	2.55 (2.52, 2.57)	0.59 (0.58, 0.60)
	70	1.17 (1.15, 1.19)	1.99 (1.96, 2.01)	- (- , -)	2.19 (2.16, 2.22)	0.58 (0.57, 0.58)
80	1.18 (1.16, 1.20)	- (- , -)	- (- , -)	1.47 (1.44, 1.50)	0.51 (0.50, 0.52)	
Black	0	0.00 (0.00, 0.00)	0.00 (0.00, 0.00)	0.00 (0.00, 0.00)	1.13 (1.08, 1.19)	0.36 (0.35, 0.38)
	10	0.00 (0.00, 0.00)	0.00 (0.00, 0.00)	0.01 (0.01, 0.01)	1.16 (1.11, 1.21)	0.37 (0.36, 0.39)
	20	0.00 (0.00, 0.00)	0.01 (0.01, 0.01)	0.05 (0.04, 0.05)	1.17 (1.12, 1.22)	0.37 (0.36, 0.39)
	30	0.01 (0.01, 0.01)	0.05 (0.04, 0.05)	0.17 (0.16, 0.19)	1.18 (1.13, 1.24)	0.38 (0.37, 0.40)
	40	0.04 (0.03, 0.04)	0.17 (0.16, 0.18)	0.45 (0.43, 0.48)	1.20 (1.15, 1.26)	0.39 (0.37, 0.40)
	50	0.14 (0.13, 0.15)	0.44 (0.41, 0.47)	0.86 (0.82, 0.91)	1.23 (1.17, 1.29)	0.40 (0.38, 0.42)
	60	0.34 (0.31, 0.36)	0.81 (0.77, 0.86)	1.13 (1.08, 1.19)	1.22 (1.16, 1.29)	0.42 (0.40, 0.44)
	70	0.60 (0.55, 0.64)	1.00 (0.94, 1.06)	- (- , -)	1.11 (1.05, 1.18)	0.44 (0.42, 0.46)
80	0.65 (0.60, 0.72)	- (- , -)	- (- , -)	0.83 (0.76, 0.91)	0.43 (0.40, 0.46)	

Devcan Version 6.2.0, April 2006, National Cancer Institute (<http://srab.cancer.gov/devcan/>).

Source: Incidence data are from the SEER 17 areas (San Francisco, Connecticut, Detroit, Hawaii, Iowa, New Mexico, Seattle, Utah, Atlanta, San Jose-Monterey, Los Angeles, Alaska Native Registry, Rural Georgia, California excluding SF/SJM/LA, Kentucky, Louisiana and New Jersey). Mortality data are from the NCHS public use data file for the total US.

- Statistic could not be calculated.

A percent or confidence interval value of 0.00 represents a value that is below 0.005.

Table XXVII-9 - continued
 URINARY BLADDER CANCER (Invasive and In Situ)

Risk of Being Diagnosed With Cancer in 10, 20 and 30 Years, Lifetime Risk of Being Diagnosed with Cancer, and
 Lifetime Risk of Dying from Cancer Given Cancer Free At Current Age
 Both Sexes, 2002-2004 By Race/Ethnicity

Race/ Ethnicity	Current Age	Risk of Being Diagnosed with Cancer				Risk of Dying from Cancer	
		+10 yrs Percent (95% C.I.)	+20 yrs Percent (95% C.I.)	+30 yrs Percent (95% C.I.)	Eventually Percent (95% C.I.)	Eventually Percent (95% C.I.)	
Asian/ Pacific Islander	0	0.00 (0.00, 0.00)	0.00 (0.00, 0.00)	0.00 (0.00, 0.01)	1.43 (1.34, 1.53)	0.36 (0.31, 0.42)	
	10	0.00 (0.00, 0.00)	0.00 (0.00, 0.01)	0.01 (0.00, 0.01)	1.44 (1.35, 1.54)	0.37 (0.32, 0.43)	
	20	0.00 (0.00, 0.00)	0.01 (0.00, 0.01)	0.03 (0.02, 0.03)	1.44 (1.35, 1.55)	0.37 (0.32, 0.43)	
	30	0.00 (0.00, 0.01)	0.03 (0.02, 0.03)	0.10 (0.09, 0.11)	1.45 (1.36, 1.55)	0.37 (0.32, 0.43)	
	40	0.02 (0.02, 0.03)	0.09 (0.08, 0.10)	0.32 (0.29, 0.34)	1.45 (1.36, 1.56)	0.37 (0.32, 0.43)	
	50	0.07 (0.06, 0.08)	0.30 (0.28, 0.33)	0.75 (0.70, 0.79)	1.45 (1.36, 1.56)	0.37 (0.32, 0.43)	
	60	0.24 (0.21, 0.26)	0.70 (0.65, 0.75)	1.18 (1.11, 1.25)	1.43 (1.33, 1.54)	0.38 (0.32, 0.44)	
	70	0.50 (0.47, 0.54)	1.02 (0.95, 1.09)	- (- , -)	1.30 (1.19, 1.41)	0.38 (0.32, 0.45)	
80	0.65 (0.58, 0.71)	- (- , -)	- (- , -)	0.99 (0.88, 1.12)	0.36 (0.29, 0.44)		
American Indian/ Alaska Native ^a	0	0.00 (0.00, 0.02)	0.00 (0.00, 0.02)	0.00 (0.00, 0.02)	0.69 (0.52, 1.02)	0.23 (0.15, 0.35)	
	10	0.00 (0.00, 0.01)	0.00 (0.00, 0.01)	0.00 (0.00, 0.02)	0.70 (0.53, 1.04)	0.23 (0.16, 0.36)	
	20	0.00 (0.00, 0.01)	0.00 (0.00, 0.02)	0.01 (0.00, 0.03)	0.71 (0.54, 1.05)	0.23 (0.16, 0.36)	
	30	0.00 (0.00, 0.02)	0.01 (0.00, 0.03)	0.11 (0.07, 0.16)	0.72 (0.54, 1.06)	0.24 (0.16, 0.37)	
	40	0.01 (0.00, 0.03)	0.10 (0.07, 0.16)	0.32 (0.23, 0.43)	0.74 (0.55, 1.09)	0.25 (0.16, 0.38)	
	50	0.10 (0.06, 0.16)	0.32 (0.23, 0.44)	0.56 (0.42, 0.73)	0.76 (0.57, 1.12)	0.25 (0.17, 0.39)	
	60	0.24 (0.16, 0.35)	0.49 (0.35, 0.67)	0.70 (0.51, 0.95)	0.71 (0.51, 1.10)	0.25 (0.16, 0.40)	
	70	0.30 (0.18, 0.46)	0.54 (0.35, 0.81)	- (- , -)	0.55 (0.36, 0.99)	0.26 (0.15, 0.44)	
80	0.35 (0.18, 0.64)	- (- , -)	- (- , -)	0.36 (0.18, 0.93)	0.30 (0.16, 0.56)		
Hispanic ^b	0	0.00 (0.00, 0.00)	0.00 (0.00, 0.00)	0.00 (0.00, 0.00)	1.53 (1.45, 1.62)	0.39 (0.36, 0.42)	
	10	0.00 (0.00, 0.00)	0.00 (0.00, 0.00)	0.01 (0.01, 0.01)	1.55 (1.46, 1.64)	0.40 (0.37, 0.43)	
	20	0.00 (0.00, 0.00)	0.01 (0.01, 0.01)	0.04 (0.03, 0.04)	1.55 (1.47, 1.65)	0.40 (0.37, 0.43)	
	30	0.01 (0.01, 0.01)	0.03 (0.03, 0.04)	0.13 (0.12, 0.14)	1.57 (1.48, 1.66)	0.40 (0.37, 0.43)	
	40	0.03 (0.02, 0.03)	0.13 (0.12, 0.14)	0.40 (0.38, 0.43)	1.57 (1.49, 1.67)	0.41 (0.38, 0.44)	
	50	0.10 (0.09, 0.11)	0.38 (0.36, 0.41)	0.87 (0.82, 0.91)	1.58 (1.49, 1.68)	0.41 (0.38, 0.44)	
	60	0.30 (0.27, 0.32)	0.80 (0.76, 0.85)	1.32 (1.25, 1.39)	1.56 (1.46, 1.66)	0.42 (0.39, 0.45)	
	70	0.57 (0.53, 0.61)	1.14 (1.07, 1.22)	- (- , -)	1.41 (1.31, 1.52)	0.41 (0.38, 0.45)	
80	0.76 (0.69, 0.83)	- (- , -)	- (- , -)	1.12 (1.00, 1.25)	0.40 (0.36, 0.44)		

Devcan Version 6.2.0, April 2006, National Cancer Institute (<http://srab.cancer.gov/devcan/>).

Source: Incidence data are from the SEER 17 areas (San Francisco, Connecticut, Detroit, Hawaii, Iowa, New Mexico, Seattle, Utah, Atlanta, San Jose-Monterey, Los Angeles, Alaska Native Registry, Rural Georgia, California excluding SF/SJM/LA, Kentucky, Louisiana and New Jersey). Mortality data are from the NCHS public use data file for the total US.

^a Underlying incidence and mortality data for American Indian/Alaska Native are based on the CHSDA (Contract Health Service Delivery Area) counties.

^b Hispanic is not mutually exclusive from whites, blacks, Asian/Pacific Islanders, and American Indians/Alaska Natives. Underlying incidence data for Hispanics are based on NHIA and exclude cases from the Alaska Native Registry and Kentucky. Underlying mortality data for Hispanics exclude deaths from Minnesota, New Hampshire and North Dakota.

- Statistic could not be calculated.

A percent or confidence interval value of 0.00 represents a value that is below 0.005.

Table XXVII-9 - continued
 URINARY BLADDER CANCER (Invasive and In Situ)

Risk of Being Diagnosed With Cancer in 10, 20 and 30 Years, Lifetime Risk of Being Diagnosed with Cancer, and
 Lifetime Risk of Dying from Cancer Given Cancer Free At Current Age
 Males, 2002-2004 By Race/Ethnicity

Race/ Ethnicity	Current Age	Risk of Being Diagnosed with Cancer						Risk of Dying from Cancer	
		+10 yrs Percent (95% C.I.)	+20 yrs Percent (95% C.I.)	+30 yrs Percent (95% C.I.)	Eventually Percent (95% C.I.)	Eventually Percent (95% C.I.)			
All Races	0	0.00 (0.00, 0.00)	0.00 (0.00, 0.00)	0.01 (0.00, 0.01)	3.70 (3.65, 3.74)	0.78 (0.77, 0.79)			
	10	0.00 (0.00, 0.00)	0.01 (0.00, 0.01)	0.02 (0.02, 0.02)	3.75 (3.70, 3.79)	0.79 (0.78, 0.80)			
	20	0.00 (0.00, 0.01)	0.02 (0.02, 0.02)	0.10 (0.10, 0.11)	3.77 (3.72, 3.81)	0.80 (0.79, 0.81)			
	30	0.02 (0.02, 0.02)	0.10 (0.10, 0.10)	0.42 (0.41, 0.43)	3.81 (3.77, 3.86)	0.81 (0.80, 0.82)			
	40	0.08 (0.08, 0.09)	0.41 (0.40, 0.42)	1.26 (1.24, 1.28)	3.86 (3.82, 3.91)	0.82 (0.81, 0.83)			
	50	0.34 (0.33, 0.35)	1.22 (1.20, 1.25)	2.66 (2.62, 2.69)	3.92 (3.87, 3.96)	0.84 (0.83, 0.85)			
	60	0.96 (0.94, 0.98)	2.51 (2.48, 2.54)	3.60 (3.55, 3.64)	3.88 (3.83, 3.92)	0.87 (0.86, 0.88)			
	70	1.86 (1.83, 1.90)	3.17 (3.13, 3.22)	- (- , -)	3.50 (3.45, 3.56)	0.88 (0.87, 0.89)			
80	2.06 (2.01, 2.10)	- (- , -)	- (- , -)	2.58 (2.52, 2.64)	0.84 (0.83, 0.86)				
White	0	0.00 (0.00, 0.00)	0.00 (0.00, 0.00)	0.01 (0.00, 0.01)	4.03 (3.99, 4.08)	0.83 (0.82, 0.84)			
	10	0.00 (0.00, 0.00)	0.01 (0.00, 0.01)	0.02 (0.02, 0.03)	4.08 (4.03, 4.13)	0.84 (0.83, 0.85)			
	20	0.00 (0.00, 0.01)	0.02 (0.02, 0.03)	0.11 (0.11, 0.12)	4.10 (4.05, 4.15)	0.85 (0.84, 0.86)			
	30	0.02 (0.02, 0.02)	0.11 (0.10, 0.11)	0.46 (0.45, 0.47)	4.15 (4.10, 4.20)	0.86 (0.85, 0.87)			
	40	0.09 (0.09, 0.09)	0.45 (0.44, 0.46)	1.39 (1.37, 1.42)	4.20 (4.15, 4.25)	0.87 (0.86, 0.88)			
	50	0.37 (0.36, 0.38)	1.35 (1.32, 1.37)	2.91 (2.87, 2.95)	4.25 (4.20, 4.30)	0.89 (0.88, 0.91)			
	60	1.06 (1.03, 1.08)	2.74 (2.70, 2.78)	3.90 (3.85, 3.95)	4.19 (4.13, 4.24)	0.92 (0.90, 0.93)			
	70	2.02 (1.99, 2.06)	3.41 (3.36, 3.46)	- (- , -)	3.75 (3.70, 3.81)	0.92 (0.91, 0.94)			
80	2.19 (2.15, 2.24)	- (- , -)	- (- , -)	2.73 (2.67, 2.79)	0.87 (0.86, 0.89)				
Black	0	0.00 (0.00, 0.00)	0.00 (0.00, 0.00)	0.00 (0.00, 0.01)	1.48 (1.40, 1.57)	0.40 (0.38, 0.42)			
	10	0.00 (0.00, 0.00)	0.00 (0.00, 0.00)	0.01 (0.01, 0.02)	1.52 (1.44, 1.62)	0.41 (0.39, 0.43)			
	20	0.00 (0.00, 0.00)	0.01 (0.01, 0.02)	0.07 (0.06, 0.08)	1.54 (1.45, 1.63)	0.41 (0.39, 0.44)			
	30	0.01 (0.01, 0.02)	0.07 (0.06, 0.08)	0.26 (0.24, 0.29)	1.57 (1.49, 1.67)	0.42 (0.40, 0.45)			
	40	0.06 (0.05, 0.07)	0.26 (0.23, 0.28)	0.66 (0.62, 0.71)	1.61 (1.52, 1.71)	0.43 (0.41, 0.46)			
	50	0.21 (0.19, 0.24)	0.65 (0.60, 0.70)	1.22 (1.15, 1.30)	1.66 (1.56, 1.76)	0.45 (0.43, 0.48)			
	60	0.50 (0.45, 0.55)	1.17 (1.09, 1.25)	1.58 (1.48, 1.68)	1.67 (1.57, 1.79)	0.48 (0.46, 0.51)			
	70	0.89 (0.82, 0.98)	1.45 (1.34, 1.56)	- (- , -)	1.57 (1.45, 1.71)	0.53 (0.49, 0.56)			
80	1.01 (0.89, 1.14)	- (- , -)	- (- , -)	1.24 (1.09, 1.42)	0.54 (0.49, 0.60)				

Devcan Version 6.2.0, April 2006, National Cancer Institute (<http://srab.cancer.gov/devcan/>).

Source: Incidence data are from the SEER 17 areas (San Francisco, Connecticut, Detroit, Hawaii, Iowa, New Mexico, Seattle, Utah, Atlanta, San Jose-Monterey, Los Angeles, Alaska Native Registry, Rural Georgia, California excluding SF/SJM/LA, Kentucky, Louisiana and New Jersey). Mortality data are from the NCHS public use data file for the total US.

- Statistic could not be calculated.

A percent or confidence interval value of 0.00 represents a value that is below 0.005.

Table XXVII-9 - continued
 URINARY BLADDER CANCER (Invasive and In Situ)

Risk of Being Diagnosed With Cancer in 10, 20 and 30 Years, Lifetime Risk of Being Diagnosed with Cancer, and
 Lifetime Risk of Dying from Cancer Given Cancer Free At Current Age
 Males, 2002-2004 By Race/Ethnicity

Race/ Ethnicity	Current Age	Risk of Being Diagnosed with Cancer				Risk of Dying from Cancer	
		+10 yrs Percent (95% C.I.)	+20 yrs Percent (95% C.I.)	+30 yrs Percent (95% C.I.)	Eventually Percent (95% C.I.)	Eventually Percent (95% C.I.)	
Asian/ Pacific Islander	0	0.00 (0.00, 0.00)	0.00 (0.00, 0.01)	0.00 (0.00, 0.01)	2.29 (2.13, 2.48)	0.53 (0.45, 0.64)	
	10	0.00 (0.00, 0.00)	0.00 (0.00, 0.01)	0.01 (0.01, 0.02)	2.32 (2.15, 2.50)	0.54 (0.45, 0.65)	
	20	0.00 (0.00, 0.01)	0.01 (0.01, 0.02)	0.05 (0.04, 0.06)	2.32 (2.16, 2.51)	0.54 (0.45, 0.65)	
	30	0.01 (0.01, 0.01)	0.05 (0.04, 0.06)	0.17 (0.15, 0.19)	2.33 (2.17, 2.52)	0.54 (0.45, 0.65)	
	40	0.04 (0.03, 0.05)	0.16 (0.14, 0.18)	0.55 (0.50, 0.60)	2.34 (2.18, 2.53)	0.55 (0.46, 0.66)	
	50	0.13 (0.11, 0.15)	0.52 (0.47, 0.57)	1.29 (1.20, 1.38)	2.35 (2.18, 2.54)	0.55 (0.46, 0.66)	
	60	0.41 (0.37, 0.45)	1.22 (1.13, 1.31)	1.95 (1.82, 2.09)	2.32 (2.15, 2.52)	0.56 (0.46, 0.68)	
	70	0.90 (0.82, 0.98)	1.72 (1.59, 1.86)	- (- , -)	2.13 (1.94, 2.35)	0.56 (0.46, 0.69)	
80	1.09 (0.97, 1.23)	- (- , -)	- (- , -)	1.64 (1.42, 1.89)	0.54 (0.42, 0.71)		
American Indian/ Alaska Native ^a	0	0.00 (0.00, 0.04)	0.00 (0.00, 0.04)	0.00 (0.00, 0.04)	1.07 (0.77, 1.80)	0.30 (0.17, 0.54)	
	10	0.00 (0.00, 0.02)	0.00 (0.00, 0.02)	0.00 (0.00, 0.03)	1.10 (0.78, 1.84)	0.31 (0.18, 0.56)	
	20	0.00 (0.00, 0.02)	0.00 (0.00, 0.03)	0.01 (0.00, 0.04)	1.11 (0.79, 1.86)	0.31 (0.18, 0.56)	
	30	0.00 (0.00, 0.03)	0.01 (0.00, 0.04)	0.15 (0.09, 0.25)	1.14 (0.81, 1.90)	0.32 (0.18, 0.58)	
	40	0.01 (0.00, 0.04)	0.16 (0.09, 0.26)	0.48 (0.33, 0.69)	1.18 (0.84, 1.97)	0.33 (0.19, 0.60)	
	50	0.16 (0.09, 0.26)	0.50 (0.33, 0.72)	0.87 (0.62, 1.19)	1.23 (0.87, 2.07)	0.35 (0.20, 0.63)	
	60	0.37 (0.23, 0.58)	0.77 (0.53, 1.11)	1.16 (0.79, 1.67)	1.17 (0.80, 2.08)	0.36 (0.20, 0.68)	
	70	0.49 (0.27, 0.81)	0.95 (0.57, 1.51)	- (- , -)	0.96 (0.58, 2.04)	0.38 (0.19, 0.78)	
80	0.70 (0.32, 1.39)	- (- , -)	- (- , -)	0.72 (0.32, 2.29)	0.47 (0.20, 1.08)		
Hispanic ^b	0	0.00 (0.00, 0.00)	0.00 (0.00, 0.00)	0.00 (0.00, 0.01)	2.37 (2.22, 2.55)	0.56 (0.51, 0.62)	
	10	0.00 (0.00, 0.00)	0.00 (0.00, 0.00)	0.01 (0.01, 0.01)	2.40 (2.24, 2.58)	0.57 (0.52, 0.63)	
	20	0.00 (0.00, 0.00)	0.01 (0.01, 0.01)	0.05 (0.04, 0.06)	2.41 (2.26, 2.59)	0.57 (0.52, 0.64)	
	30	0.01 (0.01, 0.01)	0.05 (0.04, 0.05)	0.19 (0.17, 0.21)	2.44 (2.28, 2.62)	0.58 (0.53, 0.64)	
	40	0.04 (0.03, 0.05)	0.19 (0.17, 0.21)	0.63 (0.58, 0.67)	2.46 (2.30, 2.65)	0.59 (0.54, 0.65)	
	50	0.15 (0.14, 0.17)	0.61 (0.56, 0.65)	1.40 (1.32, 1.49)	2.50 (2.34, 2.69)	0.60 (0.55, 0.67)	
	60	0.49 (0.44, 0.53)	1.33 (1.25, 1.42)	2.16 (2.03, 2.29)	2.51 (2.33, 2.70)	0.62 (0.56, 0.69)	
	70	0.98 (0.90, 1.06)	1.93 (1.79, 2.07)	- (- , -)	2.33 (2.14, 2.56)	0.63 (0.56, 0.71)	
80	1.35 (1.21, 1.50)	- (- , -)	- (- , -)	1.92 (1.69, 2.21)	0.66 (0.57, 0.76)		

Devcan Version 6.2.0, April 2006, National Cancer Institute (<http://srab.cancer.gov/devcan/>).

Source: Incidence data are from the SEER 17 areas (San Francisco, Connecticut, Detroit, Hawaii, Iowa, New Mexico, Seattle, Utah, Atlanta, San Jose-Monterey, Los Angeles, Alaska Native Registry, Rural Georgia, California excluding SF/SJM/LA, Kentucky, Louisiana and New Jersey). Mortality data are from the NCHS public use data file for the total US.

^a Underlying incidence and mortality data for American Indian/Alaska Native are based on the CHSDA (Contract Health Service Delivery Area) counties.

^b Hispanic is not mutually exclusive from whites, blacks, Asian/Pacific Islanders, and American Indians/Alaska Natives. Underlying incidence data for Hispanics are based on NHIA and exclude cases from the Alaska Native Registry and Kentucky. Underlying mortality data for Hispanics exclude deaths from Minnesota, New Hampshire and North Dakota.

- Statistic could not be calculated.

A percent or confidence interval value of 0.00 represents a value that is below 0.005.

Table XXVII-9 - continued
 URINARY BLADDER CANCER (Invasive and In Situ)

Risk of Being Diagnosed With Cancer in 10, 20 and 30 Years, Lifetime Risk of Being Diagnosed with Cancer, and
 Lifetime Risk of Dying from Cancer Given Cancer Free At Current Age
 Females, 2002-2004 By Race/Ethnicity

Race/ Ethnicity	Current Age	Risk of Being Diagnosed with Cancer				Risk of Dying from Cancer	
		+10 yrs Percent (95% C.I.)	+20 yrs Percent (95% C.I.)	+30 yrs Percent (95% C.I.)	Eventually Percent (95% C.I.)	Eventually Percent (95% C.I.)	
All Races	0	0.00 (0.00, 0.00)	0.00 (0.00, 0.00)	0.00 (0.00, 0.00)	1.17 (1.15, 1.19)	0.32 (0.32, 0.33)	
	10	0.00 (0.00, 0.00)	0.00 (0.00, 0.00)	0.01 (0.01, 0.01)	1.18 (1.16, 1.21)	0.33 (0.32, 0.33)	
	20	0.00 (0.00, 0.00)	0.01 (0.01, 0.01)	0.04 (0.04, 0.04)	1.19 (1.16, 1.21)	0.33 (0.32, 0.33)	
	30	0.01 (0.01, 0.01)	0.04 (0.03, 0.04)	0.13 (0.13, 0.14)	1.19 (1.17, 1.21)	0.33 (0.32, 0.34)	
	40	0.03 (0.03, 0.03)	0.13 (0.12, 0.13)	0.37 (0.36, 0.38)	1.19 (1.17, 1.22)	0.33 (0.33, 0.34)	
	50	0.10 (0.10, 0.10)	0.35 (0.34, 0.36)	0.74 (0.73, 0.76)	1.19 (1.17, 1.21)	0.34 (0.33, 0.34)	
	60	0.26 (0.25, 0.27)	0.68 (0.66, 0.69)	1.03 (1.00, 1.05)	1.14 (1.12, 1.16)	0.34 (0.33, 0.34)	
	70	0.47 (0.45, 0.48)	0.86 (0.84, 0.88)	- (- , -)	0.99 (0.97, 1.01)	0.33 (0.33, 0.34)	
80	0.53 (0.51, 0.55)	- (- , -)	- (- , -)	0.70 (0.68, 0.73)	0.30 (0.29, 0.31)		
White	0	0.00 (0.00, 0.00)	0.00 (0.00, 0.00)	0.00 (0.00, 0.00)	1.25 (1.22, 1.27)	0.33 (0.32, 0.33)	
	10	0.00 (0.00, 0.00)	0.00 (0.00, 0.00)	0.01 (0.01, 0.01)	1.26 (1.23, 1.29)	0.33 (0.32, 0.34)	
	20	0.00 (0.00, 0.00)	0.01 (0.01, 0.01)	0.04 (0.04, 0.05)	1.26 (1.24, 1.29)	0.33 (0.32, 0.34)	
	30	0.01 (0.01, 0.01)	0.04 (0.04, 0.04)	0.15 (0.14, 0.15)	1.27 (1.24, 1.29)	0.33 (0.33, 0.34)	
	40	0.03 (0.03, 0.03)	0.14 (0.13, 0.15)	0.41 (0.39, 0.42)	1.27 (1.24, 1.29)	0.33 (0.33, 0.34)	
	50	0.11 (0.10, 0.12)	0.38 (0.37, 0.39)	0.80 (0.78, 0.82)	1.26 (1.23, 1.29)	0.34 (0.33, 0.34)	
	60	0.28 (0.27, 0.30)	0.73 (0.71, 0.75)	1.09 (1.06, 1.11)	1.20 (1.18, 1.23)	0.34 (0.33, 0.35)	
	70	0.50 (0.48, 0.51)	0.90 (0.88, 0.92)	- (- , -)	1.03 (1.00, 1.06)	0.33 (0.33, 0.34)	
80	0.55 (0.53, 0.57)	- (- , -)	- (- , -)	0.72 (0.70, 0.74)	0.30 (0.29, 0.30)		
Black	0	0.00 (0.00, 0.00)	0.00 (0.00, 0.00)	0.00 (0.00, 0.01)	0.82 (0.76, 0.89)	0.33 (0.32, 0.35)	
	10	0.00 (0.00, 0.00)	0.00 (0.00, 0.00)	0.01 (0.00, 0.01)	0.84 (0.78, 0.91)	0.34 (0.32, 0.36)	
	20	0.00 (0.00, 0.00)	0.01 (0.00, 0.01)	0.03 (0.02, 0.03)	0.84 (0.78, 0.91)	0.34 (0.32, 0.36)	
	30	0.01 (0.00, 0.01)	0.03 (0.02, 0.03)	0.10 (0.08, 0.11)	0.85 (0.79, 0.91)	0.35 (0.33, 0.37)	
	40	0.02 (0.02, 0.03)	0.09 (0.08, 0.11)	0.27 (0.24, 0.30)	0.86 (0.79, 0.92)	0.35 (0.33, 0.37)	
	50	0.07 (0.06, 0.09)	0.26 (0.23, 0.29)	0.55 (0.51, 0.60)	0.87 (0.81, 0.94)	0.36 (0.34, 0.38)	
	60	0.20 (0.18, 0.23)	0.52 (0.48, 0.57)	0.78 (0.72, 0.85)	0.87 (0.80, 0.94)	0.37 (0.35, 0.39)	
	70	0.38 (0.34, 0.43)	0.69 (0.63, 0.76)	- (- , -)	0.80 (0.72, 0.88)	0.38 (0.36, 0.41)	
80	0.46 (0.40, 0.52)	- (- , -)	- (- , -)	0.61 (0.53, 0.70)	0.37 (0.34, 0.40)		

Devcan Version 6.2.0, April 2006, National Cancer Institute (<http://srab.cancer.gov/devcan/>).

Source: Incidence data are from the SEER 17 areas (San Francisco, Connecticut, Detroit, Hawaii, Iowa, New Mexico, Seattle, Utah, Atlanta, San Jose-Monterey, Los Angeles, Alaska Native Registry, Rural Georgia, California excluding SF/SJM/LA, Kentucky, Louisiana and New Jersey). Mortality data are from the NCHS public use data file for the total US.

- Statistic could not be calculated.

A percent or confidence interval value of 0.00 represents a value that is below 0.005.

Table XXVII-9 - continued
 URINARY BLADDER CANCER (Invasive and In Situ)

Risk of Being Diagnosed With Cancer in 10, 20 and 30 Years, Lifetime Risk of Being Diagnosed with Cancer, and
 Lifetime Risk of Dying from Cancer Given Cancer Free At Current Age
 Females, 2002-2004 By Race/Ethnicity

Race/ Ethnicity	Current Age	Risk of Being Diagnosed with Cancer				Risk of Dying from Cancer	
		+10 yrs Percent (95% C.I.)	+20 yrs Percent (95% C.I.)	+30 yrs Percent (95% C.I.)	Eventually Percent (95% C.I.)	Eventually Percent (95% C.I.)	
Asian/ Pacific Islander	0	0.00 (0.00, 0.00)	0.00 (0.00, 0.01)	0.00 (0.00, 0.01)	0.66 (0.58, 0.76)	0.21 (0.17, 0.28)	
	10	0.00 (0.00, 0.00)	0.00 (0.00, 0.00)	0.00 (0.00, 0.01)	0.66 (0.58, 0.77)	0.22 (0.17, 0.29)	
	20	0.00 (0.00, 0.00)	0.00 (0.00, 0.00)	0.01 (0.01, 0.02)	0.66 (0.58, 0.77)	0.22 (0.17, 0.29)	
	30	0.00 (0.00, 0.00)	0.01 (0.01, 0.01)	0.03 (0.02, 0.04)	0.66 (0.58, 0.77)	0.22 (0.17, 0.29)	
	40	0.01 (0.01, 0.01)	0.03 (0.02, 0.04)	0.12 (0.10, 0.14)	0.67 (0.58, 0.77)	0.22 (0.17, 0.29)	
	50	0.02 (0.02, 0.03)	0.11 (0.09, 0.14)	0.30 (0.26, 0.34)	0.67 (0.58, 0.77)	0.22 (0.17, 0.29)	
	60	0.09 (0.07, 0.11)	0.29 (0.25, 0.33)	0.54 (0.48, 0.61)	0.66 (0.57, 0.77)	0.22 (0.17, 0.29)	
	70	0.21 (0.18, 0.24)	0.48 (0.41, 0.55)	- (- , -)	0.60 (0.52, 0.72)	0.22 (0.17, 0.30)	
80	0.32 (0.26, 0.39)	- (- , -)	- (- , -)	0.48 (0.38, 0.60)	0.21 (0.15, 0.30)		
American Indian/ Alaska Native ^a	0	0.00 (0.00, 0.04)	0.00 (0.00, 0.04)	0.00 (0.00, 0.04)	0.34 (0.19, 0.84)	0.17 (0.09, 0.35)	
	10	0.00 (0.00, 0.02)	0.00 (0.00, 0.03)	0.01 (0.00, 0.04)	0.34 (0.19, 0.85)	0.17 (0.09, 0.35)	
	20	0.00 (0.00, 0.03)	0.01 (0.00, 0.04)	0.02 (0.00, 0.06)	0.34 (0.19, 0.85)	0.18 (0.09, 0.36)	
	30	0.01 (0.00, 0.04)	0.02 (0.00, 0.05)	0.06 (0.02, 0.13)	0.34 (0.19, 0.86)	0.18 (0.09, 0.36)	
	40	0.01 (0.00, 0.04)	0.05 (0.02, 0.12)	0.16 (0.08, 0.30)	0.34 (0.19, 0.87)	0.18 (0.09, 0.36)	
	50	0.05 (0.01, 0.11)	0.16 (0.08, 0.30)	0.28 (0.15, 0.48)	0.35 (0.19, 0.89)	0.18 (0.09, 0.37)	
	60	0.12 (0.05, 0.25)	0.24 (0.12, 0.45)	0.32 (0.16, 0.59)	0.32 (0.16, 0.89)	0.17 (0.08, 0.38)	
	70	0.14 (0.05, 0.33)	0.22 (0.09, 0.51)	- (- , -)	0.22 (0.09, 0.88)	0.17 (0.07, 0.41)	
80	0.11 (0.02, 0.42)	- (- , -)	- (- , -)	0.11 (0.02, 0.98)	0.20 (0.07, 0.54)		
Hispanic ^b	0	0.00 (0.00, 0.00)	0.00 (0.00, 0.00)	0.00 (0.00, 0.00)	0.83 (0.75, 0.94)	0.26 (0.23, 0.30)	
	10	0.00 (0.00, 0.00)	0.00 (0.00, 0.00)	0.01 (0.00, 0.01)	0.84 (0.75, 0.95)	0.26 (0.23, 0.30)	
	20	0.00 (0.00, 0.00)	0.01 (0.00, 0.01)	0.02 (0.02, 0.03)	0.84 (0.75, 0.95)	0.27 (0.23, 0.30)	
	30	0.01 (0.00, 0.01)	0.02 (0.02, 0.03)	0.07 (0.06, 0.08)	0.84 (0.76, 0.95)	0.27 (0.24, 0.30)	
	40	0.02 (0.01, 0.02)	0.07 (0.06, 0.08)	0.20 (0.18, 0.22)	0.84 (0.75, 0.95)	0.27 (0.24, 0.30)	
	50	0.05 (0.04, 0.06)	0.19 (0.16, 0.21)	0.41 (0.37, 0.45)	0.84 (0.75, 0.95)	0.27 (0.24, 0.31)	
	60	0.14 (0.12, 0.16)	0.37 (0.33, 0.41)	0.65 (0.58, 0.71)	0.82 (0.72, 0.93)	0.27 (0.24, 0.31)	
	70	0.25 (0.22, 0.29)	0.56 (0.49, 0.63)	- (- , -)	0.74 (0.64, 0.86)	0.27 (0.24, 0.31)	
80	0.38 (0.32, 0.45)	- (- , -)	- (- , -)	0.62 (0.50, 0.75)	0.25 (0.21, 0.30)		

Devcan Version 6.2.0, April 2006, National Cancer Institute (<http://srab.cancer.gov/devcan/>).

Source: Incidence data are from the SEER 17 areas (San Francisco, Connecticut, Detroit, Hawaii, Iowa, New Mexico, Seattle, Utah, Atlanta, San Jose-Monterey, Los Angeles, Alaska Native Registry, Rural Georgia, California excluding SF/SJM/LA, Kentucky, Louisiana and New Jersey). Mortality data are from the NCHS public use data file for the total US.

^a Underlying incidence and mortality data for American Indian/Alaska Native are based on the CHSDA (Contract Health Service Delivery Area) counties.

^b Hispanic is not mutually exclusive from whites, blacks, Asian/Pacific Islanders, and American Indians/Alaska Natives. Underlying incidence data for Hispanics are based on NHIA and exclude cases from the Alaska Native Registry and Kentucky. Underlying mortality data for Hispanics exclude deaths from Minnesota, New Hampshire and North Dakota.

- Statistic could not be calculated.

A percent or confidence interval value of 0.00 represents a value that is below 0.005.

Table XXVII-10
URINARY BLADDER CANCER

SEER INCIDENCE (Invasive and *In Situ*) AND U.S. MORTALITY
AGE-ADJUSTED RATES AND TRENDS^a
By Race/Ethnicity and Sex

SEER Incidence	Rate 2000-2004 ^b			Trend 1995-2004 ^c		
	Rate per 100,000 persons			APC (%)		
	Total	Males	Females	Total	Males	Females
RACE/ETHNICITY						
All Races	21.1	37.3	9.4	0.0	0.0	-0.4*
White	23.0	40.5	10.1	0.1	0.1	-0.2
White Hispanic ^d	11.8	20.5	5.6	0.0	0.3	-0.7
White Non-Hispanic ^d	24.6	43.2	10.7	0.3	0.2	0.0
Black	12.6	20.3	7.6	0.7	0.7	0.6
Asian/Pacific Islander	9.2	16.4	3.9	0.2	1.2	-1.4
Amer Ind/Alaska Nat ^e	7.0	11.9	3.2	-	-	-
Hispanic ^d	11.6	20.2	5.5	0.1	0.4	-0.6
U.S. Mortality ^f						
	Rate 2000-2004			Trend 1995-2004		
	Rate per 100,000 persons			APC (%)		
	Total	Males	Females	Total	Males	Females
RACE/ETHNICITY						
All Races	4.3	7.5	2.3	-0.2	-0.4*	-0.5
White	4.5	7.9	2.3	0.0	-0.3	-0.3
White Hispanic ^d	2.5	4.1	1.4	0.4	-1.0	2.6
White Non-Hispanic ^d	4.6	8.1	2.3	0.1	-0.2	-0.3
Black	3.7	5.3	2.8	-1.3*	-1.5*	-1.3*
Asian/Pacific Islander	1.8	2.9	1.0	-0.1	0.8	-1.5
Amer Ind/Alaska Nat						
Total U.S.	1.6	2.5	1.1	1.1	-	-
CHSDA Counties	1.9	3.1	1.1	-	-	-
Non-CHSDA Counties	1.3	1.6	1.1	-	-	-
Hispanic ^d	2.4	3.9	1.4	0.2	-1.2	2.5

- The APC is the Annual Percent Change over the time interval.
 - Statistic not shown. Rate based on less than 16 cases for the time interval. Trend based on less than 10 cases for at least one year within the time interval.
 a Rates are age-adjusted to the 2000 US Std Population (19 age groups - Census P25-1130). Trends are based on rates age-adjusted to the 2000 US Std Population (19 age groups - Census P25-1130).
 b Incidence data used in calculating the rates are from the 17 SEER areas (San Francisco, Connecticut, Detroit, Hawaii, Iowa, New Mexico, Seattle, Utah, Atlanta, San Jose-Monterey, Los Angeles, Alaska Native Registry, Rural Georgia, California excluding SF/SJM/LA, Kentucky, Louisiana and New Jersey).
 c Incidence data used in calculating the trends are from the 13 SEER areas (San Francisco, Connecticut, Detroit, Hawaii, Iowa, New Mexico, Seattle, Utah, Atlanta, San Jose-Monterey, Los Angeles, Alaska Native Registry and Rural Georgia).
 d Hispanic and Non-Hispanic are not mutually exclusive from whites, blacks, Asian/Pacific Islanders, and American Indians/Alaska Natives. Incidence data for Hispanics and Non-Hispanics are based on NHIA and exclude cases from the Alaska Native Registry and Kentucky. The 2000-2004 Hispanic and Non-Hispanic death rates exclude deaths from Minnesota, New Hampshire and North Dakota. The 1995-2004 Hispanic and Non-Hispanic mortality trends exclude deaths from Maine, Minnesota, New Hampshire, North Dakota, and Oklahoma.
 e Incidence data for American Indian/Alaska Native are based on the CHSDA(Contract Health Service Delivery Area) counties.
 f Mortality data are analyzed from a public use file provided by the National Center for Health Statistics (NCHS).
 * The APC is significantly different from zero (p<.05).

Table XXVII-11
URINARY BLADDER CANCER

AGE-ADJUSTED SEER INCIDENCE RATES^a
By Registry, Race and Sex

	All Races			Whites			Blacks		
	Total	Males	Females	Total	Males	Females	Total	Males	Females
<u>SEER INCIDENCE RATES^a, 2000-2004</u>									
REGISTRY									
Atlanta & Rural Georgia	17.3	30.8	8.3	20.0	35.8	9.0	11.0	17.3	7.1
Atlanta	17.5	30.8	8.6	20.1	35.6	9.3	11.5	17.6	7.7
Rural Georgia	15.1	31.4	-	19.2	38.9	-	-	-	-
California	19.5	34.6	8.4	21.3	37.7	9.1	13.2	21.5	7.4
Greater Bay Area	18.5	32.5	8.4	21.7	37.8	9.9	11.7	19.3	6.7
San Francisco-Oakland	18.4	32.1	8.4	21.9	37.9	10.1	11.1	17.8	6.8
San Jose-Monterey	18.9	33.5	8.3	21.4	37.8	9.5	17.7	34.4	-
Los Angeles	18.2	32.6	7.8	20.2	36.6	8.4	13.9	23.2	7.8
Greater California	20.5	36.2	8.7	21.6	38.1	9.1	13.3	20.5	7.5
Connecticut	25.5	44.5	12.0	26.5	46.1	12.4	12.6	18.4	8.6
Detroit	24.1	43.4	10.7	27.2	49.3	11.6	13.0	20.7	8.1
Hawaii	13.8	24.5	5.5	24.0	40.2	10.2	-	-	-
Iowa	22.4	39.3	9.9	22.1	38.9	9.8	10.0	-	-
Kentucky	21.4	38.0	9.8	21.8	38.7	9.8	14.4	22.7	8.6
Louisiana	19.4	35.3	8.5	22.1	40.3	9.2	11.5	19.3	6.4
New Jersey	26.1	45.7	12.4	28.1	49.0	13.1	13.1	19.9	8.7
New Mexico	16.5	28.7	7.1	17.6	30.5	7.6	-	-	-
Seattle-Puget Sound	24.6	43.2	10.6	25.9	45.4	11.1	15.3	22.3	9.0
Utah	16.6	29.4	6.5	16.8	29.8	6.7	-	-	-
9 SEER Areas ^b	21.2	37.2	9.4	23.3	40.9	10.3	12.3	19.3	7.8
11 SEER Areas ^b	20.3	36.0	9.0	22.5	39.8	9.8	12.8	20.5	7.7
13 SEER Areas ^b	20.3	35.9	9.0	22.5	39.8	9.8	12.7	20.5	7.6
17 SEER Areas ^b	21.1	37.3	9.4	23.0	40.5	10.1	12.6	20.3	7.6

^a Rates are per 100,000 and are age-adjusted to the 2000 US Std Population (19 age groups - Census P25-1130)

^b The SEER 9 areas are San Francisco, Connecticut, Detroit, Hawaii, Iowa, New Mexico, Seattle, Utah and Atlanta.

The SEER 11 areas comprise the SEER 9 areas plus San Jose-Monterey and Los Angeles.

The SEER 13 areas comprise the SEER 11 areas plus the Alaska Native Registry and Rural Georgia.

The SEER 17 areas comprise the SEER 13 areas plus California excluding SF/SJM/LA, Kentucky, Louisiana and New Jersey

- Statistic not shown. Rate based on less than 16 cases for the time interval.

Table XXVII-12
URINARY BLADDER CANCER

AGE-ADJUSTED SEER DEATH RATES^a
By Registry, Race and Sex

	All Races			Whites			Blacks		
	Total	Males	Females	Total	Males	Females	Total	Males	Females
<u>SEER DEATH RATES^a, 2000-2004</u>									
REGISTRY									
Atlanta & Rural Georgia	3.9	6.5	2.4	3.9	6.9	2.1	4.3	6.0	3.4
Atlanta	4.0	6.7	2.5	3.9	7.0	2.2	4.6	6.6	3.6
Rural Georgia	2.5	-	-	-	-	-	-	-	-
California	4.0	6.9	2.1	4.4	7.5	2.2	4.0	5.7	2.9
Greater Bay Area	3.7	6.4	1.9	4.2	7.3	2.1	4.3	6.1	3.2
San Francisco-Oakland	3.9	6.7	2.2	4.4	7.6	2.3	4.6	6.3	3.5
San Jose-Monterey	3.2	6.0	1.3	3.7	6.8	1.6	-	-	-
Los Angeles	3.7	6.2	2.0	4.0	7.0	2.1	3.9	6.0	2.6
Greater California	4.3	7.3	2.2	4.5	7.8	2.3	4.1	5.1	3.4
Connecticut	4.5	8.1	2.2	4.7	8.3	2.3	3.1	6.2	-
Detroit	4.1	7.5	2.0	4.3	8.0	1.8	3.8	5.7	2.7
Hawaii	2.6	4.2	1.5	3.3	5.3	2.0	-	-	-
Iowa	3.9	6.8	2.2	4.0	6.9	2.2	-	-	-
Kentucky	4.6	8.0	2.6	4.6	8.0	2.5	4.8	7.8	3.4
Louisiana	3.8	6.5	2.2	3.9	6.8	2.0	3.7	5.8	2.5
New Jersey	4.8	8.2	2.7	5.0	8.7	2.7	3.8	4.9	3.1
New Mexico	3.9	6.0	2.3	4.1	6.3	2.5	-	-	-
Seattle-Puget Sound	4.5	7.8	2.3	4.7	8.1	2.3	4.1	-	-
Utah	3.3	6.2	1.3	3.4	6.2	1.4	-	-	-
9 SEER Areas ^b	4.0	7.0	2.1	4.3	7.4	2.2	4.0	5.7	2.9
11 SEER Areas ^b	3.9	6.7	2.0	4.2	7.3	2.1	3.9	5.7	2.8
13 SEER Areas ^b	3.9	6.8	2.0	4.2	7.3	2.1	3.9	5.7	2.8
17 SEER Areas ^b	4.2	7.1	2.2	4.4	7.6	2.3	3.9	5.6	2.9
Total U.S.	4.3	7.5	2.3	4.5	7.9	2.3	3.7	5.3	2.8

^a NCHS public use data file for the total US. Rates are per 100,000 and are age-adjusted to the 2000 US Std Population (19 age groups - Census P25-1130).

^b The SEER 9 areas are San Francisco, Connecticut, Detroit, Hawaii, Iowa, New Mexico, Seattle, Utah and Atlanta.

The SEER 11 areas comprise the SEER 9 areas plus San Jose-Monterey and Los Angeles.

The SEER 13 areas comprise the SEER 11 areas plus the Alaska Native Registry and Rural Georgia.

The SEER 17 areas comprise the SEER 13 areas plus California excluding SF/SJM/LA, Kentucky, Louisiana and New Jersey

- Statistic not shown. Rate based on less than 16 cases for the time interval.

Table XXVII-13
URINARY BLADDER CANCER (Invasive)

AVERAGE ANNUAL AGE-ADJUSTED CANCER DEATH^a RATES BY STATE, ALL RACES, 2000-2004

Males and Females

State	Rate	SE	Rank	PD	State	Rate	SE	Rank	PD
TOTAL U.S.	4.3	0.02							
High Five States									
Maine	5.7 ^b	0.28	(01)	32.6 ^c					
Alaska	5.4	0.65	(02)	25.6 ^c					
New Hampshire	5.3	0.29	(03)	23.3 ^c					
Delaware	5.3	0.36	(04)	23.3 ^c					
Nevada	5.3 ^b	0.25	(05)	23.3 ^c					
Low Five States									
Nebraska	3.7	0.20	(47)	-14.0					
Alabama	3.6 ^b	0.12	(48)	-16.3 ^c					
Mississippi	3.5 ^b	0.16	(49)	-18.6 ^c					
Utah	3.3 ^b	0.20	(50)	-23.3 ^c					
Hawaii	2.6 ^b	0.20	(51)	-39.5 ^c					
Alabama	3.6 ^b	0.12	(48)	-16.3 ^c	Montana	5.0	0.31	(10)	16.3 ^c
Alaska	5.4	0.65	(02)	25.6 ^c	Nebraska	3.7	0.20	(47)	-14.0
Arizona	4.2	0.12	(32)	-2.3	Nevada	5.3 ^b	0.25	(05)	23.3 ^c
Arkansas	4.0	0.16	(38)	-7.0	New Hampshire	5.3	0.29	(03)	23.3 ^c
California	4.0 ^b	0.05	(35)	-7.0	New Jersey	4.8 ^b	0.10	(13)	11.6
Colorado	3.9	0.15	(44)	-9.3	New Mexico	3.9	0.21	(43)	-9.3
Connecticut	4.5	0.15	(19)	4.7	New York	4.5	0.07	(21)	4.7
Delaware	5.3	0.36	(04)	23.3 ^c	North Carolina	4.0 ^b	0.10	(39)	-7.0
District of Columbia	5.2	0.43	(08)	20.9 ^c	North Dakota	4.2	0.33	(30)	-2.3
Florida	4.4	0.06	(25)	2.3	Ohio	5.0 ^b	0.09	(11)	16.3 ^c
Georgia	4.0	0.11	(34)	-7.0	Oklahoma	4.2	0.15	(31)	-2.3
Hawaii	2.6 ^b	0.20	(51)	-39.5 ^c	Oregon	4.9 ^b	0.16	(12)	14.0
Idaho	4.4	0.27	(24)	2.3	Pennsylvania	4.7 ^b	0.08	(15)	9.3
Illinois	4.4	0.08	(26)	2.3	Rhode Island	5.3	0.29	(06)	23.3 ^c
Indiana	4.4	0.12	(23)	2.3	South Carolina	4.0	0.14	(37)	-7.0
Iowa	3.9	0.15	(40)	-9.3	South Dakota	3.9	0.30	(41)	-9.3
Kansas	4.0	0.17	(33)	-7.0	Tennessee	4.3	0.12	(29)	0.0
Kentucky	4.6	0.15	(16)	7.0	Texas	3.8 ^b	0.07	(46)	-11.6
Louisiana	3.8 ^b	0.14	(45)	-11.6	Utah	3.3 ^b	0.20	(50)	-23.3 ^c
Maine	5.7 ^b	0.28	(01)	32.6 ^c	Vermont	5.2	0.40	(07)	20.9 ^c
Maryland	4.5	0.13	(22)	4.7	Virginia	4.3	0.11	(28)	0.0
Massachusetts	5.1 ^b	0.12	(09)	18.6 ^c	Washington	4.5	0.13	(20)	4.7
Michigan	4.6	0.10	(17)	7.0	West Virginia	4.8	0.21	(14)	11.6
Minnesota	4.3	0.13	(27)	0.0	Wisconsin	4.6	0.13	(18)	7.0
Mississippi	3.5 ^b	0.16	(49)	-18.6 ^c	Wyoming	3.9	0.41	(42)	-9.3
Missouri	4.0	0.11	(36)	-7.0					

^a NCHS public use data file. Rates are per 100,000 and are age-adjusted to the 2000 US Std Population (19 age groups - Census P25-1130).

^b Difference between state rate and total U.S. rate is statistically significant ($p < .0002$).

^c Absolute percent difference between state rate and total U.S. rate is 15% or more.

SE Standard error of the rate.

PD Percent difference between state rate and total U.S. rate.

Table XXVII-14
URINARY BLADDER CANCER (Invasive)

AVERAGE ANNUAL AGE-ADJUSTED CANCER DEATH^a RATES BY STATE, ALL RACES, 2000-2004

Males

State	Rate	SE	Rank	PD	State	Rate	SE	Rank	PD
TOTAL U.S.	7.5	0.04							
High Five States									
New Hampshire	10.0 ^b	0.64	(01)	33.3 ^c					
Alaska	9.8	1.39	(02)	30.7 ^c					
Maine	9.6 ^b	0.57	(03)	28.0 ^c					
Rhode Island	9.4	0.63	(04)	25.3 ^c					
Delaware	9.1	0.75	(05)	21.3 ^c					
Low Five States									
Alabama	6.4 ^b	0.28	(47)	-14.7					
Utah	6.2	0.43	(48)	-17.3 ^c					
Mississippi	6.1 ^b	0.35	(49)	-18.7 ^c					
New Mexico	6.0 ^b	0.41	(50)	-20.0 ^c					
Hawaii	4.2 ^b	0.38	(51)	-44.0 ^c					
Alabama	6.4 ^b	0.28	(47)	-14.7	Montana	8.5	0.64	(09)	13.3
Alaska	9.8	1.39	(02)	30.7 ^c	Nebraska	6.6	0.42	(44)	-12.0
Arizona	7.1	0.25	(37)	-5.3	Nevada	8.7	0.49	(08)	16.0 ^c
Arkansas	7.2	0.36	(33)	-4.0	New Hampshire	10.0 ^b	0.64	(01)	33.3 ^c
California	6.9 ^b	0.11	(40)	-8.0	New Jersey	8.2	0.22	(13)	9.3
Colorado	6.7	0.32	(43)	-10.7	New Mexico	6.0 ^b	0.41	(50)	-20.0 ^c
Connecticut	8.1	0.33	(17)	8.0	New York	7.9	0.14	(19)	5.3
Delaware	9.1	0.75	(05)	21.3 ^c	North Carolina	6.9	0.22	(39)	-8.0
District of Columbia	7.2	0.84	(34)	-4.0	North Dakota	8.2	0.72	(16)	9.3
Florida	7.5	0.13	(26)	0.0	Ohio	8.9 ^b	0.20	(06)	18.7 ^c
Georgia	7.0	0.25	(38)	-6.7	Oklahoma	7.3	0.33	(30)	-2.7
Hawaii	4.2 ^b	0.38	(51)	-44.0 ^c	Oregon	8.5	0.33	(10)	13.3
Idaho	7.6	0.54	(24)	1.3	Pennsylvania	8.2 ^b	0.17	(15)	9.3
Illinois	7.6	0.18	(23)	1.3	Rhode Island	9.4	0.63	(04)	25.3 ^c
Indiana	7.8	0.26	(20)	4.0	South Carolina	7.1	0.32	(35)	-5.3
Iowa	6.8	0.31	(42)	-9.3	South Dakota	7.3	0.64	(32)	-2.7
Kansas	7.4	0.36	(29)	-1.3	Tennessee	7.3	0.27	(31)	-2.7
Kentucky	8.0	0.33	(18)	6.7	Texas	6.4 ^b	0.14	(46)	-14.7
Louisiana	6.5	0.30	(45)	-13.3	Utah	6.2	0.43	(48)	-17.3 ^c
Maine	9.6 ^b	0.57	(03)	28.0 ^c	Vermont	8.3	0.81	(12)	10.7
Maryland	7.5	0.28	(28)	0.0	Virginia	7.5	0.25	(25)	0.0
Massachusetts	8.8 ^b	0.26	(07)	17.3 ^c	Washington	7.7	0.26	(21)	2.7
Michigan	8.4 ^b	0.21	(11)	12.0	West Virginia	7.5	0.43	(27)	0.0
Minnesota	7.6	0.28	(22)	1.3	Wisconsin	8.2	0.27	(14)	9.3
Mississippi	6.1 ^b	0.35	(49)	-18.7 ^c	Wyoming	6.8	0.85	(41)	-9.3
Missouri	7.1	0.25	(36)	-5.3					

^a NCHS public use data file. Rates are per 100,000 and are age-adjusted to the 2000 US Std Population (19 age groups - Census P25-1130).

^b Difference between state rate and total U.S. rate is statistically significant ($p < .0002$).

^c Absolute percent difference between state rate and total U.S. rate is 15% or more.

SE Standard error of the rate.

PD Percent difference between state rate and total U.S. rate.

Table XXVII-15
URINARY BLADDER CANCER (Invasive)

AVERAGE ANNUAL AGE-ADJUSTED CANCER DEATH^a RATES BY STATE, ALL RACES, 2000-2004

Females

State	Rate	SE	Rank	PD	State	Rate	SE	Rank	PD
TOTAL U.S.	2.3	0.02							
High Five States									
District of Columbia	3.8	0.47	(01)	65.2 ^c					
West Virginia	3.0 ^b	0.22	(02)	30.4 ^c					
Vermont	3.0	0.39	(03)	30.4 ^c					
Maine	3.0	0.26	(04)	30.4 ^c					
Rhode Island	2.9	0.28	(05)	26.1 ^c					
Low Five States									
Alabama	1.8 ^b	0.11	(47)	-21.7 ^c					
South Dakota	1.7	0.26	(48)	-26.1 ^c					
North Dakota	1.6	0.28	(49)	-30.4 ^c					
Hawaii	1.5 ^b	0.19	(50)	-34.8 ^c					
Utah	1.3 ^b	0.17	(51)	-43.5 ^c					
Alabama	1.8 ^b	0.11	(47)	-21.7 ^c	Montana	2.5	0.29	(12)	8.7
Alaska	2.2	0.54	(34)	-4.3	Nebraska	1.8	0.18	(46)	-21.7 ^c
Arizona	2.1	0.12	(36)	-8.7	Nevada	2.8	0.24	(06)	21.7 ^c
Arkansas	1.9	0.15	(45)	-17.4 ^c	New Hampshire	2.3	0.25	(22)	0.0
California	2.1 ^b	0.05	(37)	-8.7	New Jersey	2.7 ^b	0.10	(08)	17.4 ^c
Colorado	2.1	0.14	(38)	-8.7	New Mexico	2.3	0.21	(20)	0.0
Connecticut	2.2	0.14	(26)	-4.3	New York	2.4	0.06	(16)	4.3
Delaware	2.7	0.33	(09)	17.4 ^c	North Carolina	2.2	0.10	(29)	-4.3
District of Columbia	3.8	0.47	(01)	65.2 ^c	North Dakota	1.6	0.28	(49)	-30.4 ^c
Florida	2.2	0.06	(30)	-4.3	Ohio	2.5	0.08	(13)	8.7
Georgia	2.3	0.11	(23)	0.0	Oklahoma	2.2	0.14	(32)	-4.3
Hawaii	1.5 ^b	0.19	(50)	-34.8 ^c	Oregon	2.5	0.15	(15)	8.7
Idaho	2.2	0.25	(31)	-4.3	Pennsylvania	2.5	0.07	(14)	8.7
Illinois	2.4	0.08	(18)	4.3	Rhode Island	2.9	0.28	(05)	26.1 ^c
Indiana	2.4	0.11	(17)	4.3	South Carolina	2.0	0.13	(41)	-13.0
Iowa	2.2	0.15	(27)	-4.3	South Dakota	1.7	0.26	(48)	-26.1 ^c
Kansas	1.9	0.15	(44)	-17.4 ^c	Tennessee	2.3	0.12	(21)	0.0
Kentucky	2.6	0.15	(10)	13.0	Texas	2.0 ^b	0.06	(39)	-13.0
Louisiana	2.2	0.13	(33)	-4.3	Utah	1.3 ^b	0.17	(51)	-43.5 ^c
Maine	3.0	0.26	(04)	30.4 ^c	Vermont	3.0	0.39	(03)	30.4 ^c
Maryland	2.5	0.13	(11)	8.7	Virginia	2.3	0.11	(25)	0.0
Massachusetts	2.8 ^b	0.11	(07)	21.7 ^c	Washington	2.3	0.12	(24)	0.0
Michigan	2.2	0.09	(28)	-4.3	West Virginia	3.0 ^b	0.22	(02)	30.4 ^c
Minnesota	2.1	0.12	(35)	-8.7	Wisconsin	2.3	0.12	(19)	0.0
Mississippi	2.0	0.15	(42)	-13.0	Wyoming	2.0	0.38	(43)	-13.0
Missouri	2.0	0.10	(40)	-13.0					

^a NCHS public use data file. Rates are per 100,000 and are age-adjusted to the 2000 US Std Population (19 age groups - Census P25-1130).

^b Difference between state rate and total U.S. rate is statistically significant ($p < .0002$).

^c Absolute percent difference between state rate and total U.S. rate is 15% or more.

SE Standard error of the rate.

PD Percent difference between state rate and total U.S. rate.

Table XXVII-16
URINARY BLADDER CANCER (Invasive)

Estimated United States Cancer Prevalence Counts^a on January 1, 2004
By Race/Ethnicity, Sex and Years Since Diagnosis

Years Since Diagnosis	0 to <5	5 to <10	10 to <15	15 to <20	20 to <25	0 to <14 ^e	0 to <29 ^e	>=29 ^g	Complete ^h
<u>Race/Sex</u>									
All Races ^b	185,870	124,783	82,465	51,924	30,594	379,619	489,252	22,538	511,790
Males	139,001	92,860	61,148	38,627	21,832	283,235	362,809	14,714	377,523
Females	46,869	31,923	21,317	13,297	8,762	96,384	126,443	7,824	134,267
White ^b	173,651	117,485	78,353	49,437	29,399	356,461	461,231	17,762	478,993
Males	130,508	87,561	58,097	36,808	21,016	266,730	342,878	11,379	354,257
Females	43,143	29,924	20,256	12,629	8,383	89,731	118,353	6,383	124,736
Black ^b	7,484	4,210	2,596	1,670	701	14,017	17,041	349	17,390
Males	4,824	2,963	1,874	1,244	438	9,473	11,601	281	11,882
Females	2,660	1,247	722	426	263	4,544	5,440	68	5,508
Asian/Pacific Islander ^c	2,461	1,424	+	+	+	4,623	+	+	+
Males	1,889	1,026	+	+	+	3,480	+	+	+
Females	572	398	+	+	+	1,143	+	+	+
Hispanic ^d	5,360	3,161	+	+	+	10,351	+	+	+
Males	4,080	2,432	+	+	+	7,858	+	+	+
Females	1,280	729	+	+	+	2,493	+	+	+

Estimated prevalence percent^a on January 1, 2004, of the SEER 11 population diagnosed in the previous 10 years
By Age at Prevalence, Race/Ethnicity and Sex

Age at Prevalence	Age Specific (Crude)										Age-Adjusted ^f
	All Ages	0-9	10-19	20-29	30-39	40-49	50-59	60-69	70-79	80+	All Ages
<u>Race/Sex</u>											
All Races ^c	0.0894%	0.0002%	0.0002%	0.0017%	0.0060%	0.0247%	0.0963%	0.2968%	0.5997%	0.7140%	0.0967%
Males	0.1359%	0.0002%	0.0002%	0.0021%	0.0083%	0.0377%	0.1530%	0.4886%	1.0702%	1.4124%	0.1710%
Females	0.0439%	-	-	0.0012%	0.0036%	0.0118%	0.0425%	0.1250%	0.2446%	0.3314%	0.0418%
White ^c	0.1066%	0.0002%	-	0.0021%	0.0072%	0.0280%	0.1101%	0.3432%	0.6805%	0.7731%	0.1090%
Males	0.1611%	0.0003%	-	0.0026%	0.0097%	0.0417%	0.1721%	0.5592%	1.2062%	1.5513%	0.1917%
Females	0.0523%	-	-	0.0015%	0.0045%	0.0139%	0.0497%	0.1447%	0.2753%	0.3524%	0.0470%
Black ^c	0.0309%	-	-	-	0.0025%	0.0148%	0.0569%	0.1370%	0.2589%	0.3251%	0.0455%
Males	0.0448%	-	-	-	0.0035%	0.0255%	0.1003%	0.2209%	0.4541%	0.5256%	0.0772%
Females	0.0183%	-	-	-	0.0016%	0.0054%	0.0210%	0.0712%	0.1309%	0.2284%	0.0243%
Asian/Pacific Islander ^c	0.0367%	-	-	-	0.0022%	0.0106%	0.0321%	0.1001%	0.2567%	0.4424%	0.0430%
Males	0.0566%	-	-	-	0.0034%	0.0183%	0.0512%	0.1722%	0.4524%	0.7962%	0.0755%
Females	0.0181%	-	-	-	-	0.0036%	0.0153%	0.0398%	0.1163%	0.2072%	0.0191%
Hispanic ^d	0.0205%	-	-	0.0005%	0.0035%	0.0109%	0.0419%	0.1312%	0.2756%	0.3623%	0.0453%
Males	0.0302%	-	-	-	0.0043%	0.0161%	0.0662%	0.2320%	0.5135%	0.6914%	0.0823%
Females	0.0102%	-	-	-	0.0027%	0.0056%	0.0192%	0.0473%	0.1056%	0.1742%	0.0190%

^a US 2004 cancer prevalence counts are based on 2004 cancer prevalence proportions from the SEER registries and 1/1/2004 US population estimates based on the average of 2003 and 2004 population estimates from the US Bureau of the Census. Prevalence was calculated using the First Malignant Primary Only for a person.

^{b c d} Statistics based on (b) SEER 9 Areas (c) SEER 11 Areas and Rural Georgia (d) NHIA for Hispanic for SEER 11 Areas and Rural Georgia.

^e Maximum limited-duration prevalence: 29 years for 1975-2004 SEER 9 data; 14 years for 1990-2004 SEER 11 data (used to calculate prevalence for Hispanics and Asian Pacific Islanders).

^f Percentages are age-adjusted to the 2000 US Standard Population (19 age groups - Census P25-1130) by 5-year age groups.

^{g h} (g) Cases diagnosed more than 29 years ago were estimated using the completeness index method (Capocaccia et. al. 1997, Merrill et. al. 2000). (h) Complete prevalence is obtained by summing 0 to <29 and >=29.

- Statistic not shown. Statistic based on fewer than 5 cases estimated alive in SEER for the time interval.

+ Not available.

SEER Incidence, Delay Adjusted Incidence and US Death Rates^a Urinary Bladder Cancer, by Race and Sex

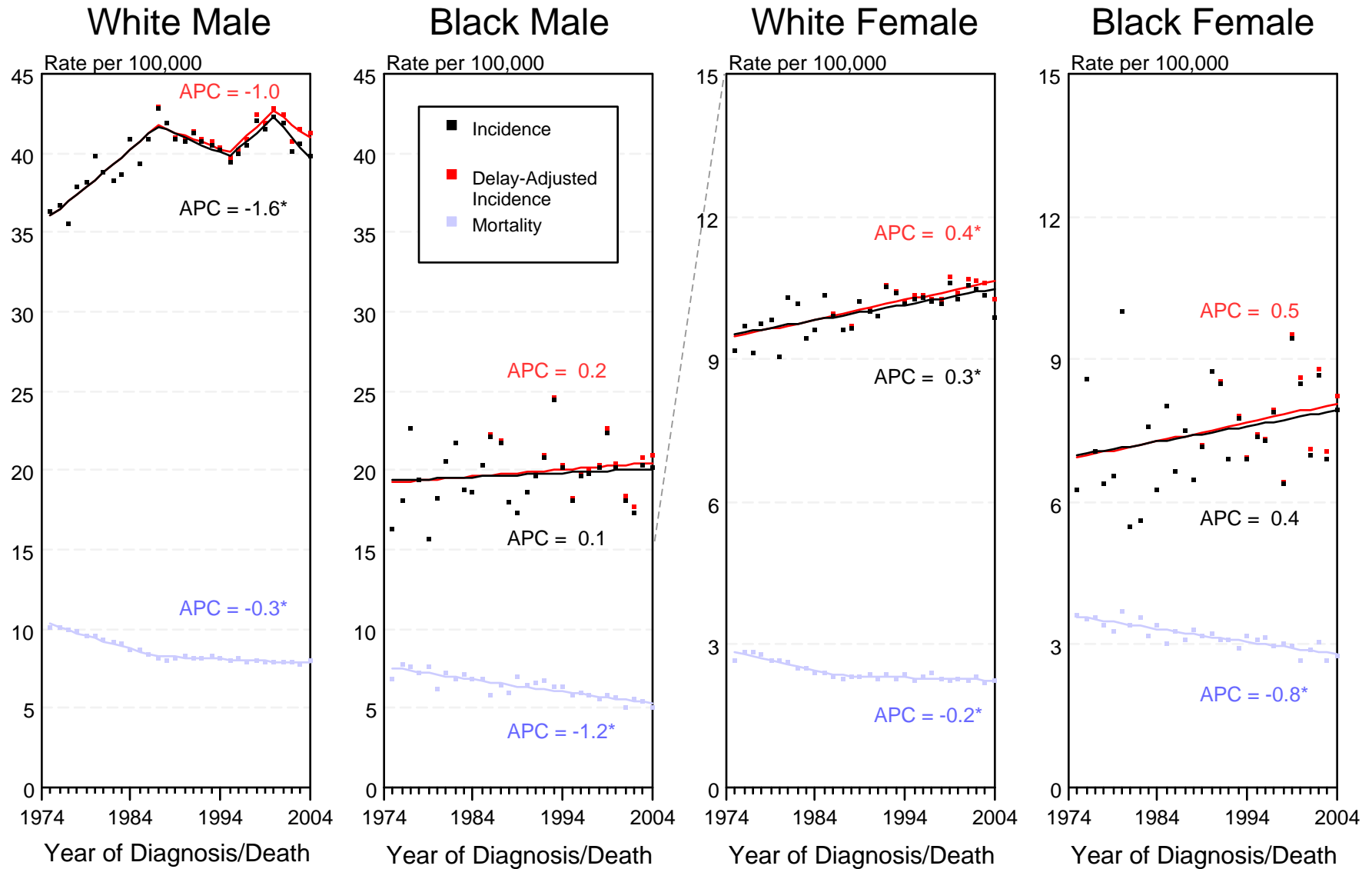


Figure XXVII-1

^a Source: SEER 9 areas and NCHS public use data file for the total US. Rates are age-adjusted to the 2000 US Std Population (19 age groups - Census P25-1103). Regression lines and APCs are calculated using the Joinpoint Regression Program Version 3.0, April 2005, National Cancer Institute.

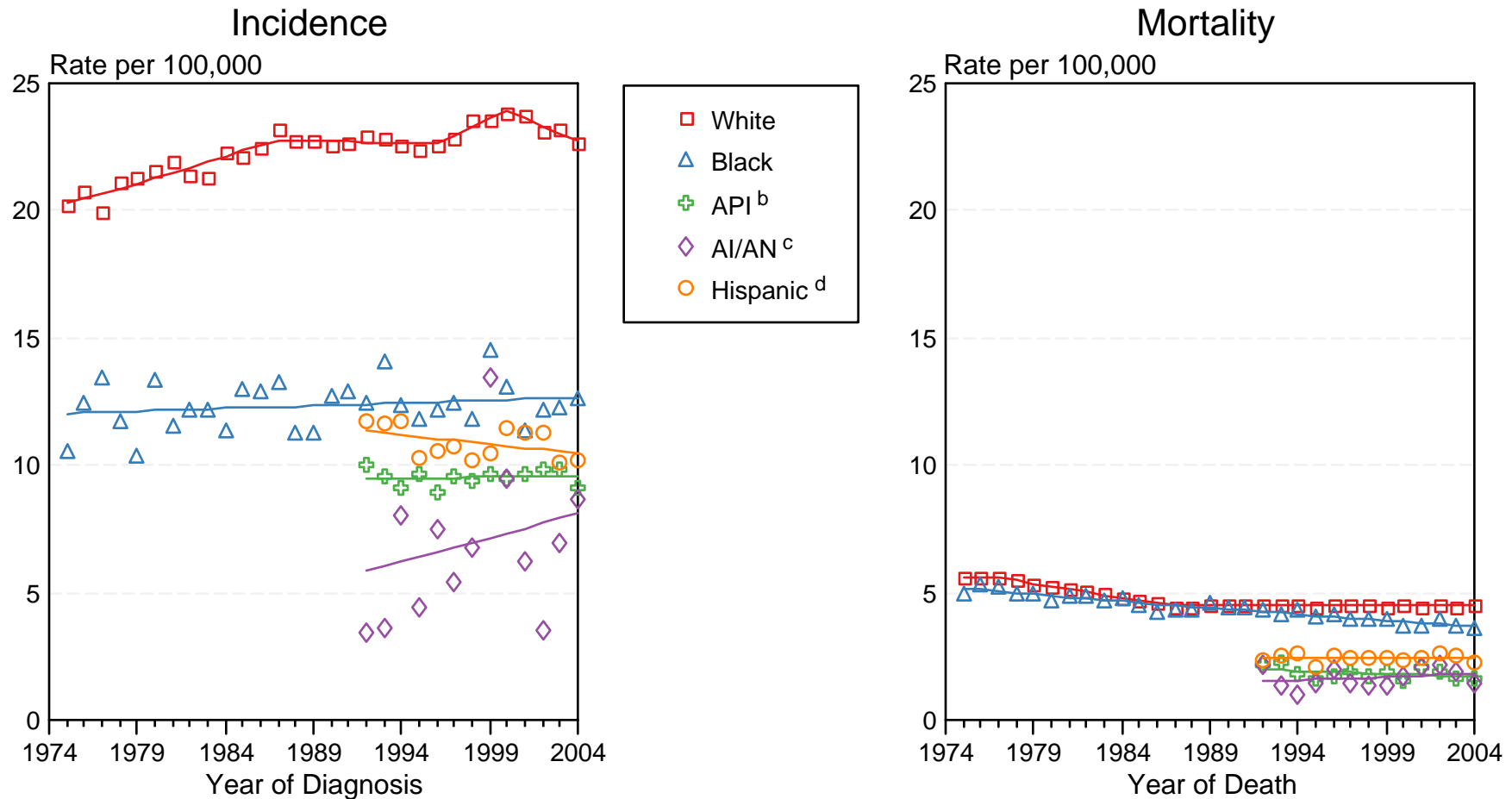
The APC is the Annual Percent Change for the regression line segments. The APC shown on the graph is for the most recent trend.

* The APC is significantly different from zero ($p < 0.05$).

SEER Incidence and US Death Rates^a Urinary Bladder Cancer, Both Sexes

Joinpoint Analyses for Whites and Blacks from 1975-2004

and for Asian/Pacific Islanders, American Indians/Alaska Natives and Hispanics from 1992-2004



Source: Incidence data for whites and blacks are from the SEER 9 areas (San Francisco, Connecticut, Detroit, Hawaii, Iowa, New Mexico, Seattle, Utah, Atlanta). Incidence data for Asian/Pacific Islanders, American Indians/Alaska Natives and Hispanics are from the SEER 13 Areas (SEER 9 Areas, San Jose-Monterey, Los Angeles, Alaska Native Registry and Rural Georgia). Mortality data are from NCHS public use data file for the total US.

^a Rates are age-adjusted to the 2000 US Std Population (19 age groups - Census P25-1103).

Regression lines are calculated using the Joinpoint Regression Program Version 3.0, April 2005, National Cancer Institute.

^b API = Asian/Pacific Islander.

^c AI/AN = American Indian/Alaska Native. Rates for American Indian/Alaska Native are based on the CHSDA(Contract Health Service Delivery Area) counties.

^d Hispanic is not mutually exclusive from whites, blacks, Asian/Pacific Islanders, and American Indians/Alaska Natives. Incidence data for Hispanics are based on NHIA and exclude cases from the Alaska Native Registry. Mortality data for Hispanics exclude cases from Connecticut, Maine, Maryland, Minnesota, New Hampshire, New York, North Dakota, Oklahoma, and Vermont.