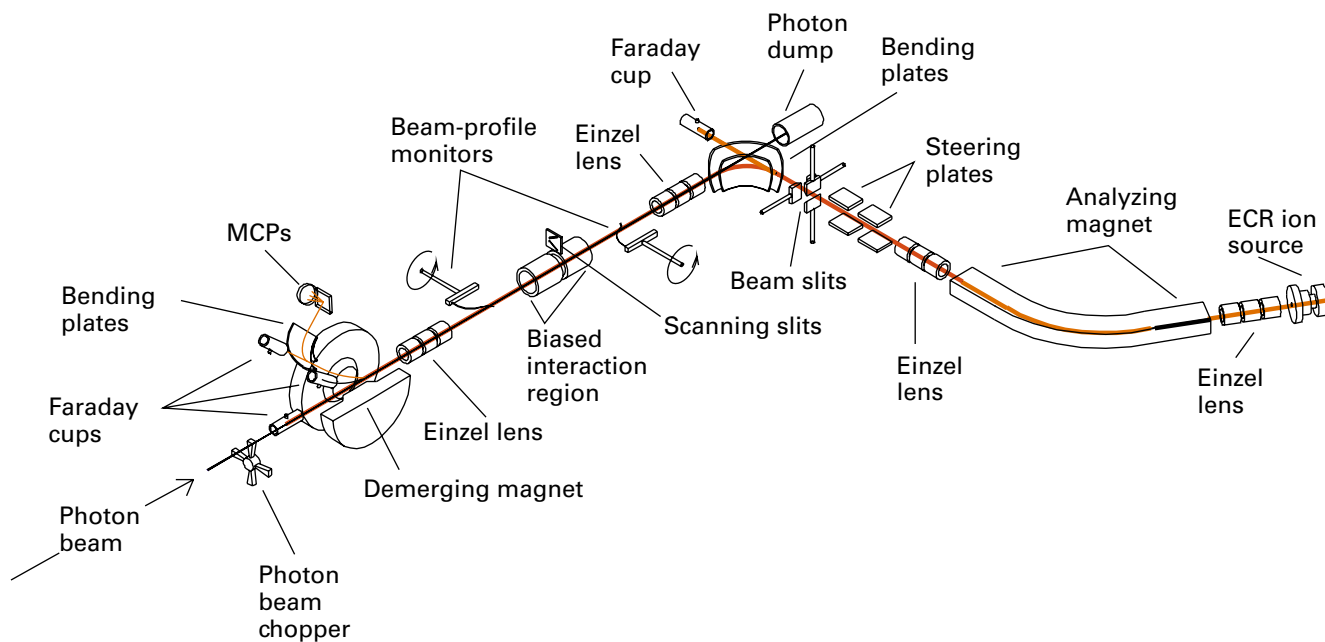


Ion Photon Beamline (IPB) • Beamline 10.0.1

Berkeley Lab • University of California

Endstation Specifications

Photon Energy Range (eV)	Photon Flux (photons/s/0.01%BW)	Spectral Resolution (E/ΔE)	Spot Size (mm)	Availability
17–340	≤ 10 ¹² (resolution dependent)	> 10,000 (selectable by slit width)	1.5 (h) × 1.5 (v)	NOW



IPB endstation.

Beamline 10.0.1 contains three branchlines, two of which are dedicated to the Atomic and Molecular Facility (AMF). The remaining branchline is dedicated to the High Energy Resolution Spectrometer (HERS) endstation, described in a separate data sheet.

The first AMF branchline serves the High-Resolution Atomic and Molecular Electron Spectrometer (HiRAMES) endstation (described in a separate data sheet). The second AMF branchline serves the collinear Ion-Photon Beamline (IPB)

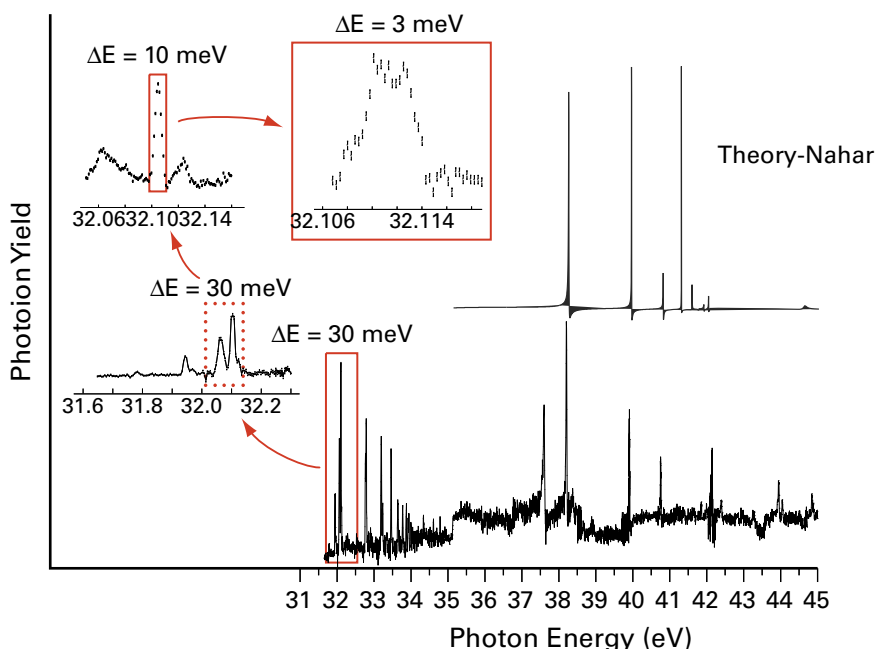
endstation and the Electron Spin Polarization (ESP) endstation (also described in a separate data sheet).

The Ion-Photon Beamline (IPB) endstation is designed for absolute photoion spectroscopy (photoionization cross-section measurements and excitation spectra) of singly and multiply charged positive ions and negative ions. A Colutron ion gun apparatus (CIGA) provides an intense source of ions that are photoionized by a collinear beam of VUV/soft x-ray photons. This beamline will also be used to study photoexcitation and photoionization of

multiply charged ions produced by an electron cyclotron resonance (ECR) source.

The high brightness and low emittance that characterize the ALS make it an ideal facility for the study of photon-ion interactions. A common objective of the experiments to be conducted at the IPB is a deeper understanding of the complex multi-electron interactions that govern inelastic processes occurring in ionized plasmas, which constitute more than 99.99% of the known mass

in the universe. The endstation has been designed for absolute measurements, which are important for benchmarking theoretical calculations of x-ray opacities. These are critical to the modeling of astrophysical, fusion, pulsed-power, and x-ray laser plasmas. Systematic studies along isoelectronic and isonuclear sequences of ions will permit a fine-tuning of their electronic structure and therefore provide a sensitive probe of the electron-electron interaction. ■



Photoionization measurements for O^+ in the energy range near the $4s$ ground-state threshold at 35.12 eV. The insets on the left indicate measurements made at increasing photon energy resolution. The inset on the right is provided for comparison to the R -matrix theory of S. Nahar [Phys. Rev. A 58, 3766 (1998)] for ground-state O^+ . Resonances observed at energies below 35.12 eV are due to $2D$ and $2P$ metastable components in the reactant ion beam. These metastable states are prominent in the ionosphere and in stellar atmospheres. Data courtesy of R. Phaneuf (University of Nevada-Reno) et al.

To obtain a proposal form, go to www-als.lbl.gov/als/quickguide/independinvest.html.

For Endstation Information

John Bozek
Advanced Light Source
Berkeley Lab, MS 6R2100
Berkeley, CA 94720
Tel: (510) 486-4967
Fax: (510) 486-7696
Email: jdbozek@lbl.gov

Spokespersons

Nora Berrah
Physics Department
Western Michigan University
Kalamazoo, MI 49008
Tel: (616) 387-4955
Fax: (616) 387-4939
Email: berrah@wmich.edu

Ronald Phaneuf
Department of Physics
University of Nevada, Reno
Reno, NV 89557
Tel: (775) 784-6818
Fax: (775) 784-1398
Email: phaneuf@physics.unr.edu