

Map 5.
Proposed Construction Features on the Ted's Flat Site Under the Proposed Action

Project Features

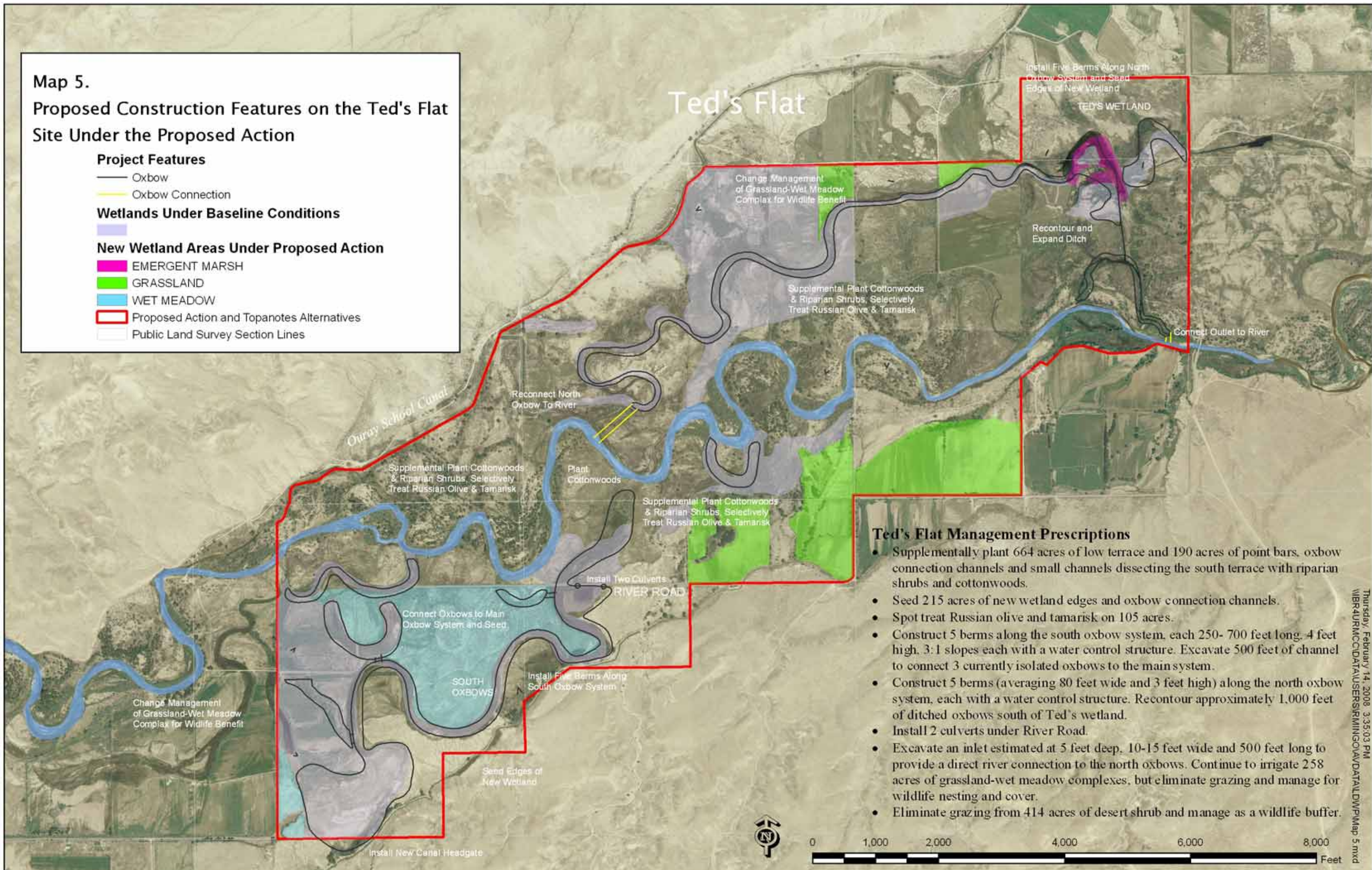
- Oxbow
- Oxbow Connection

Wetlands Under Baseline Conditions



New Wetland Areas Under Proposed Action

- EMERGENT MARSH
- GRASSLAND
- WET MEADOW
- Proposed Action and Topanotes Alternatives
- Public Land Survey Section Lines



Ted's Flat Management Prescriptions

- Supplementally plant 664 acres of low terrace and 190 acres of point bars, oxbow connection channels and small channels dissecting the south terrace with riparian shrubs and cottonwoods.
- Seed 215 acres of new wetland edges and oxbow connection channels.
- Spot treat Russian olive and tamarisk on 105 acres.
- Construct 5 berms along the south oxbow system, each 250- 700 feet long, 4 feet high, 3:1 slopes each with a water control structure. Excavate 500 feet of channel to connect 3 currently isolated oxbows to the main system.
- Construct 5 berms (averaging 80 feet wide and 3 feet high) along the north oxbow system, each with a water control structure. Recontour approximately 1,000 feet of ditched oxbows south of Ted's wetland.
- Install 2 culverts under River Road.
- Excavate an inlet estimated at 5 feet deep, 10-15 feet wide and 500 feet long to provide a direct river connection to the north oxbows. Continue to irrigate 258 acres of grassland-wet meadow complexes, but eliminate grazing and manage for wildlife nesting and cover.
- Eliminate grazing from 414 acres of desert shrub and manage as a wildlife buffer.



Thursday, February 14, 2008 3:35:03 PM
 \\BIR4URMCC\DATA\USERS\SRIMING\SOAV\DATA\LDW\Map 5.mxd