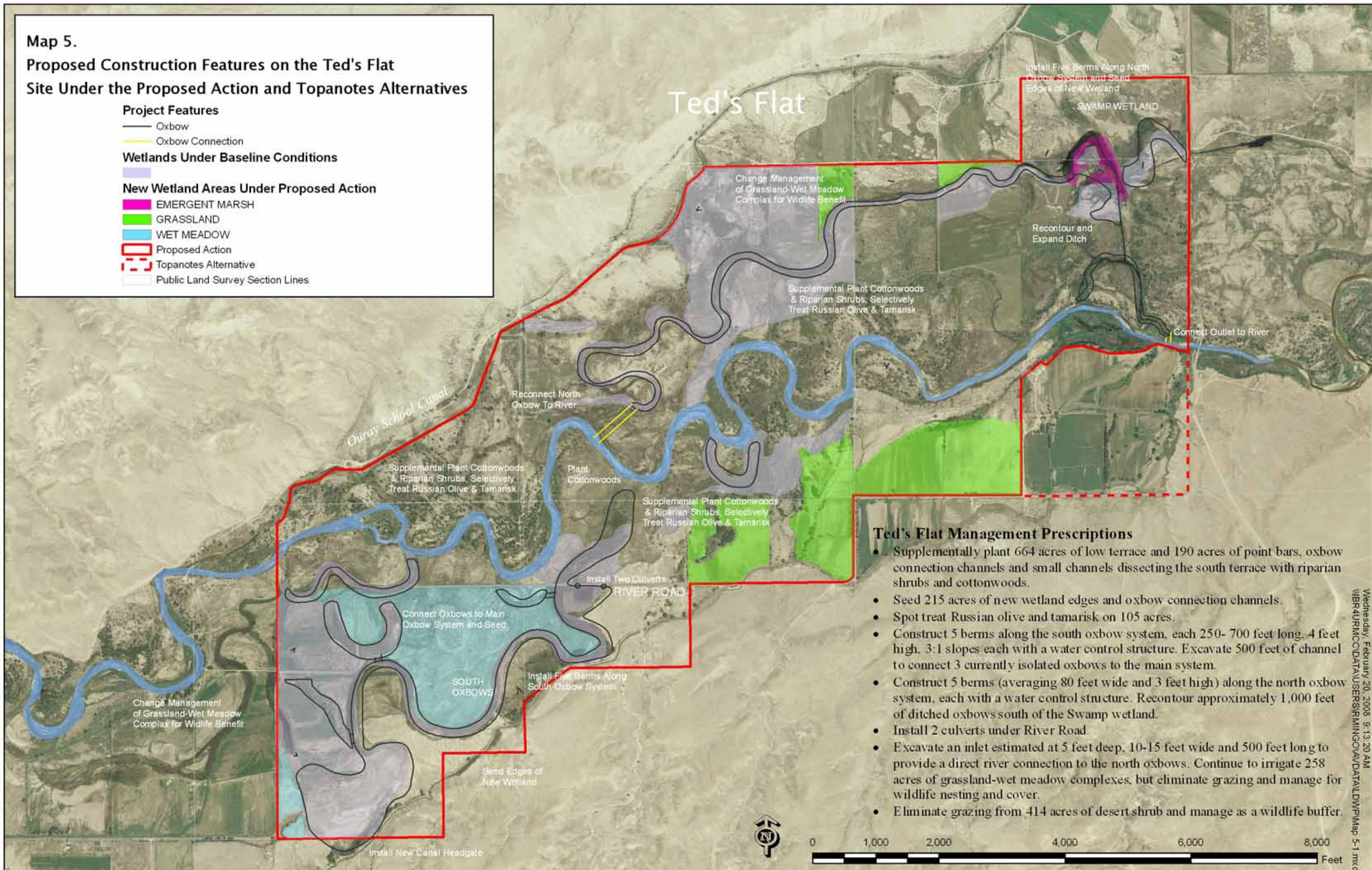


Map 5.
Proposed Construction Features on the Ted's Flat Site Under the Proposed Action and Topanotes Alternatives

- Project Features**
- Oxbow
 - Oxbow Connection
- Wetlands Under Baseline Conditions**
-
- New Wetland Areas Under Proposed Action**
- EMERGENT MARSH
 - GRASSLAND
 - WET MEADOW
- Proposed Action**
-
- Topanotes Alternative**
-
- Public Land Survey Section Lines**
-



Ted's Flat Management Prescriptions

- Supplementally plant 664 acres of low terrace and 190 acres of point bars, oxbow connection channels and small channels dissecting the south terrace with riparian shrubs and cottonwoods.
- Seed 215 acres of new wetland edges and oxbow connection channels.
- Spot treat Russian olive and tamarisk on 105 acres.
- Construct 5 berms along the south oxbow system, each 250- 700 feet long, 4 feet high, 3:1 slopes each with a water control structure. Excavate 500 feet of channel to connect 3 currently isolated oxbows to the main system.
- Construct 5 berms (averaging 80 feet wide and 3 feet high) along the north oxbow system, each with a water control structure. Recontour approximately 1,000 feet of ditched oxbows south of the Swamp wetland.
- Install 2 culverts under River Road.
- Excavate an inlet estimated at 5 feet deep, 10-15 feet wide and 500 feet long to provide a direct river connection to the north oxbows. Continue to irrigate 258 acres of grassland-wet meadow complexes, but eliminate grazing and manage for wildlife nesting and cover.
- Eliminate grazing from 414 acres of desert shrub and manage as a wildlife buffer.