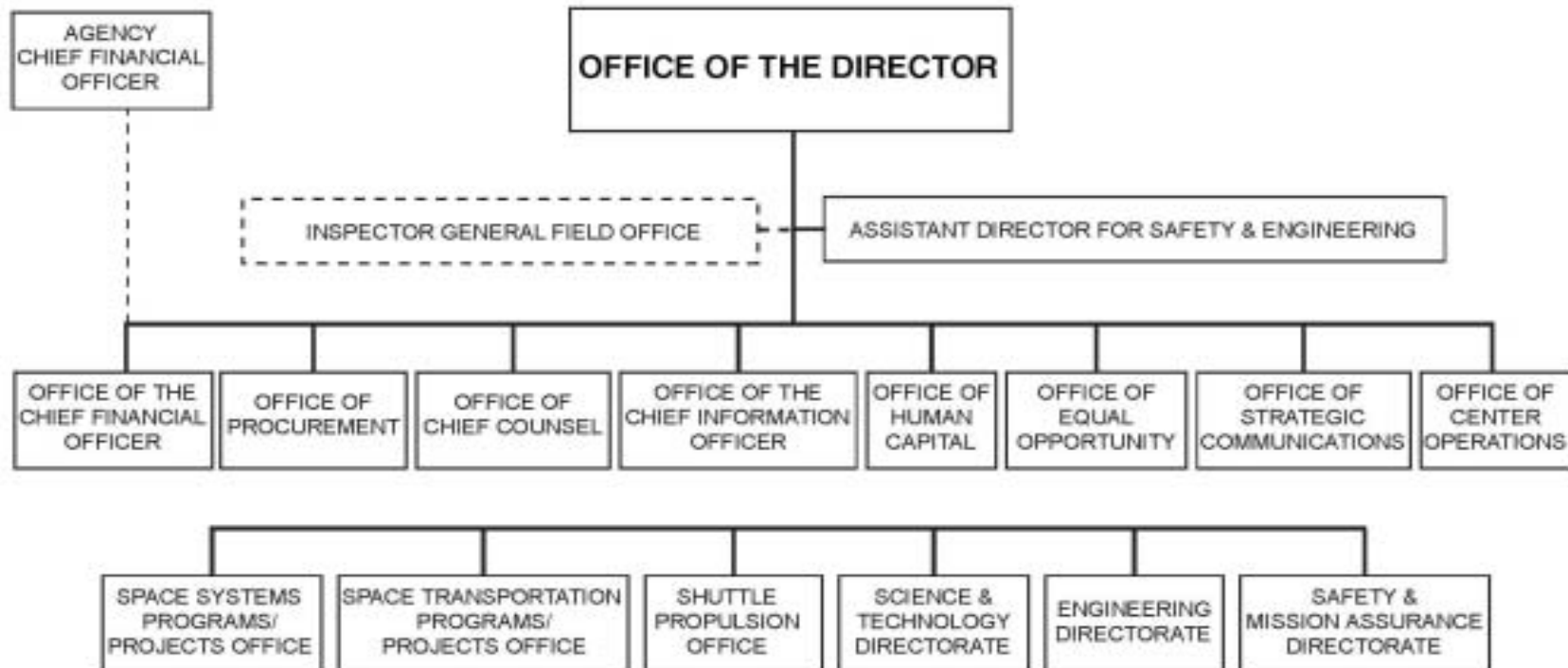


GEORGE C. MARSHALL SPACE FLIGHT CENTER (MSFC)



APPROVED: _____
David A. King
Director, MSFC

DATE: **August 19, 2004**

MSFC - HEALTH

How does your office relate to other offices in the scheme of things?

1. As a subgroup of a staff office, we do not garner the same attention or respect with management as the Safety & Mission Assurance Directorate
2. Our relationship with the Center population is very beneficial, interactive for all parties. They see us as a 'helping hand', not as a 'watchdog wanting to get them'

MSFC - HEALTH

What are your office's successes?

1. Handle over 13K patients a year with limited staffing
2. Provide Industrial Hygiene support to more than 200 facilities with a wide variety of research activities
3. Maintaining quality services when going through multiple employee transitions

MSFC - HEALTH

What are your office's successes?

- 4. To date, have survived resource reductions without cutting services*
- 5. Provided equipment upgrades in both Medical and IH*
- 6. Finalized addition of quality case manager/nurse to the staff*

MSFC - HEALTH

What are your office's successes?

- 7. Promptly replaced Radiation Safety Officer*
- 8. Maintaining approximately 80% civil service participation for physical exams*
- 9. 23% increase in membership at wellness center (350 more participants)*

MSFC - HEALTH

What problems do you need assistance with?

1. *Immediate development/implementation of medical/IH management software*
2. *Line manager accountability for program compliance*
3. *Development of NASA-wide physical exam criteria for personnel certification*
4. *Funding for comprehensive asbestos survey*