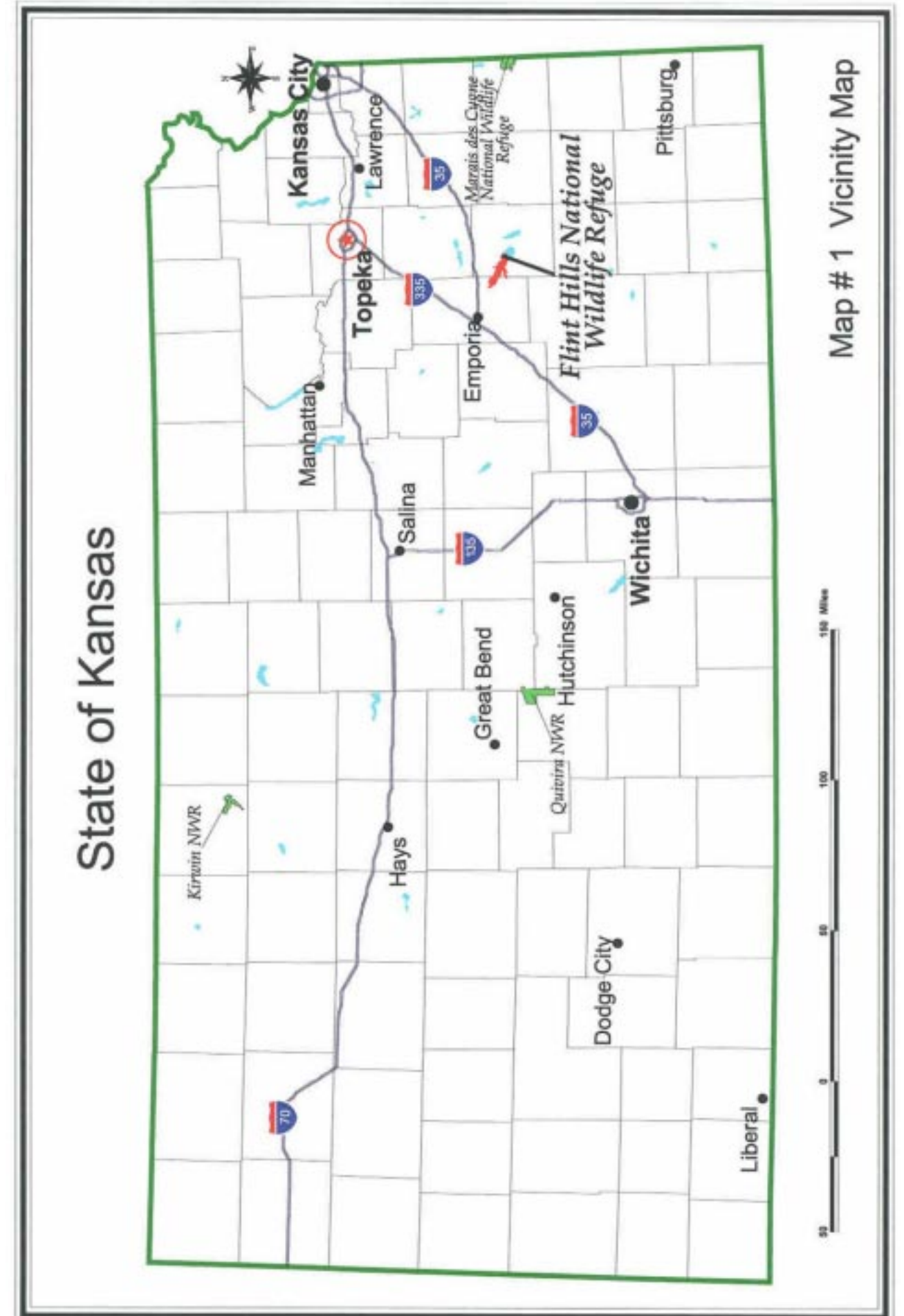
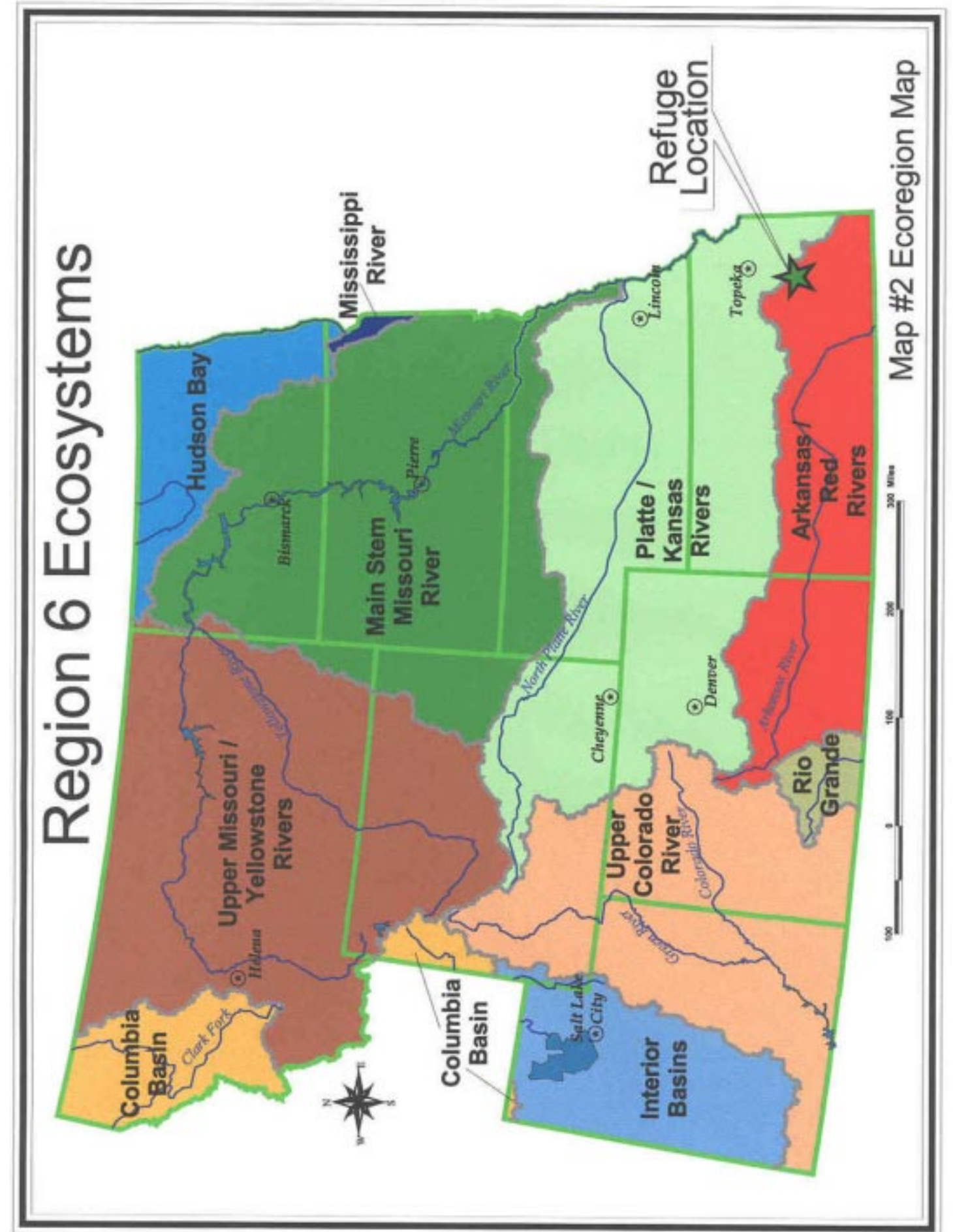
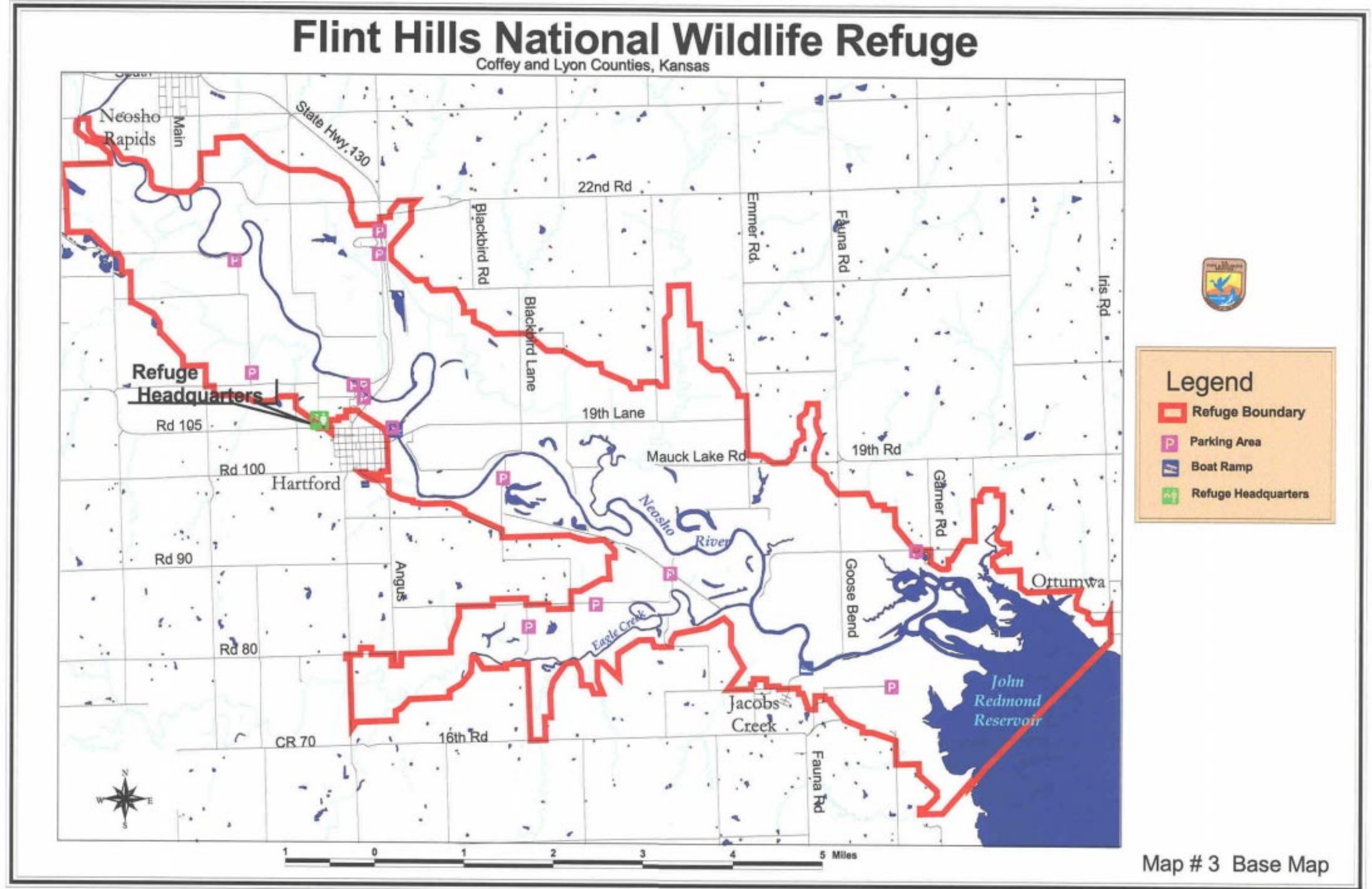


Contents

Map 1. Vicinity Map	1
Map 2. Ecoregion Map	2
Map 3. Base Map	3
Map 4. Soils Map	4
Map 5. Wetland Units Map	5
Map 6. Cropland/Farmland Map	6
Map 7. Public Use Map	7
Map 8. Hunting Map	8
Map 9. Wetland Habitat Map	9
Map 10. Habitats of Refuge Concern	10

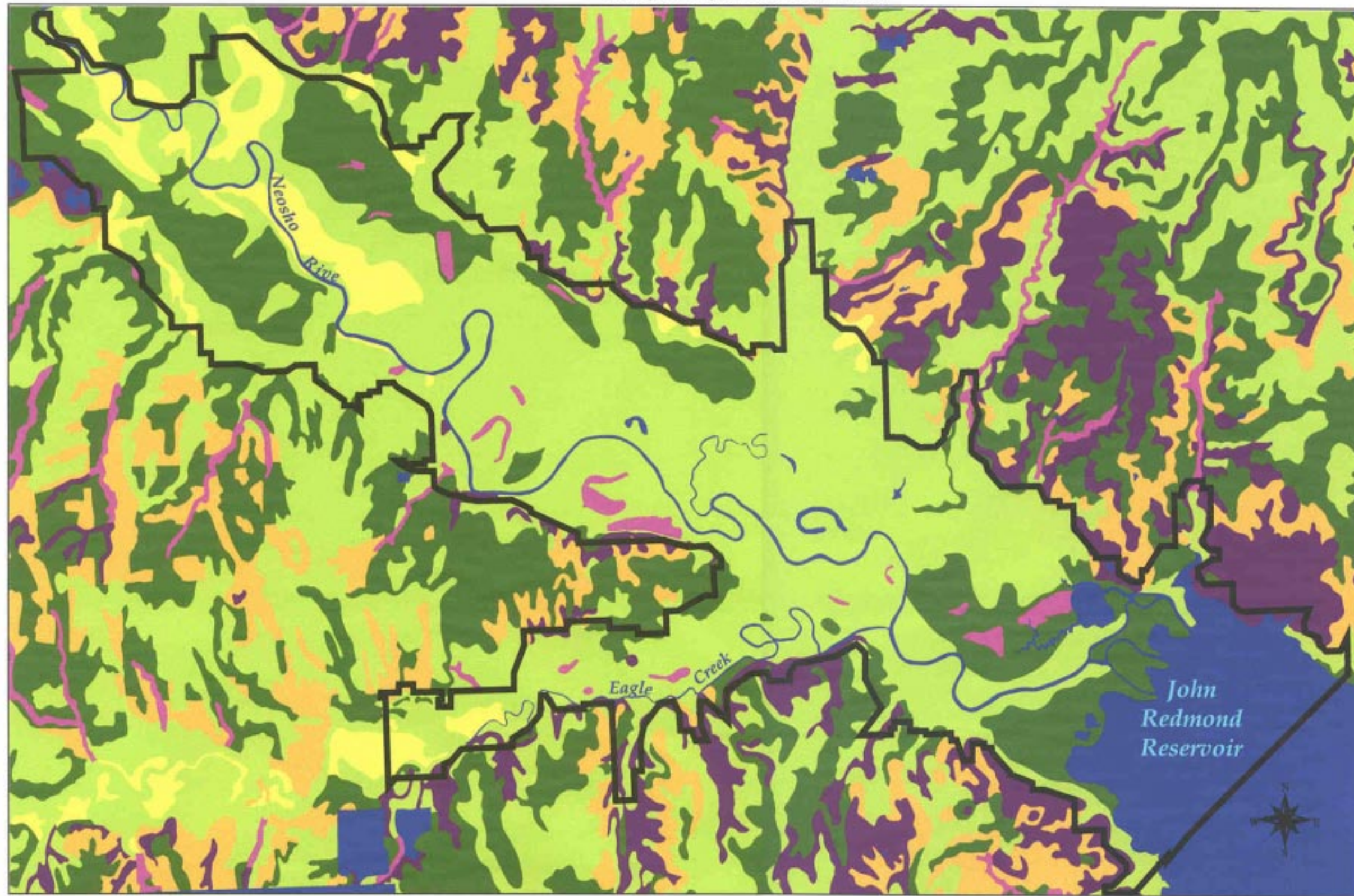






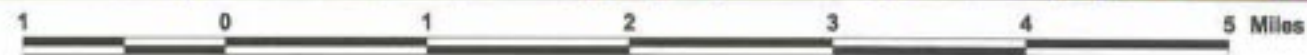
Soils of Flint Hills NWR

Coffey and Lyon Counties, Kansas



Legend
Soil Capability Classes

Yellow	I - Few or No Hazards
Light Green	II
Dark Green	III
Orange	IV
Pink	V
Purple	VI - Severe Hazards



Map #4 Soils Map

Wetland Units of Flint Hills NWR

Coffey and Lyon Counties, Kansas

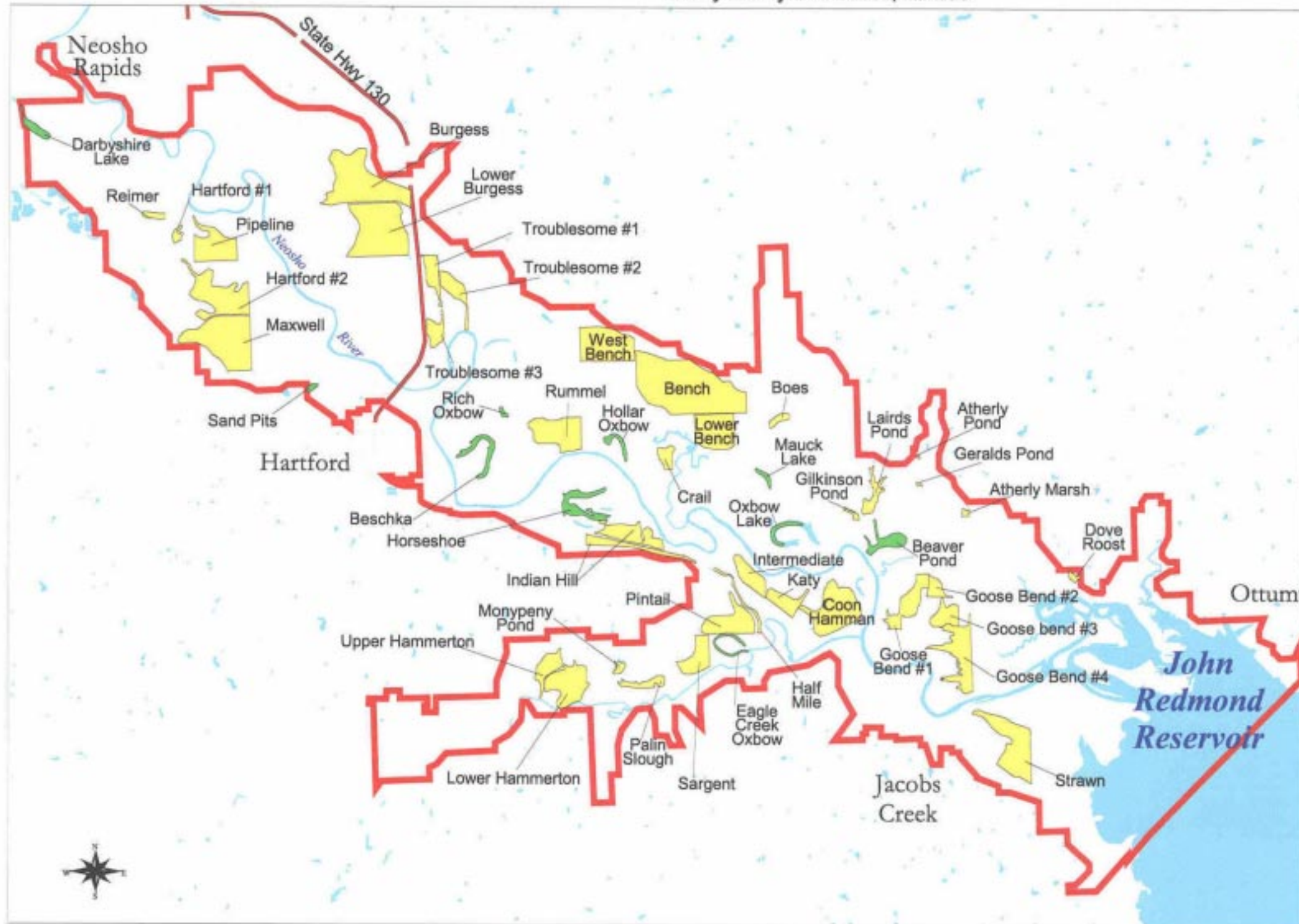


Frequency	Wetland typ	Acreege
8	CREATED	122.933
43	NATURAL	1933.972

Legend

Wetland Units

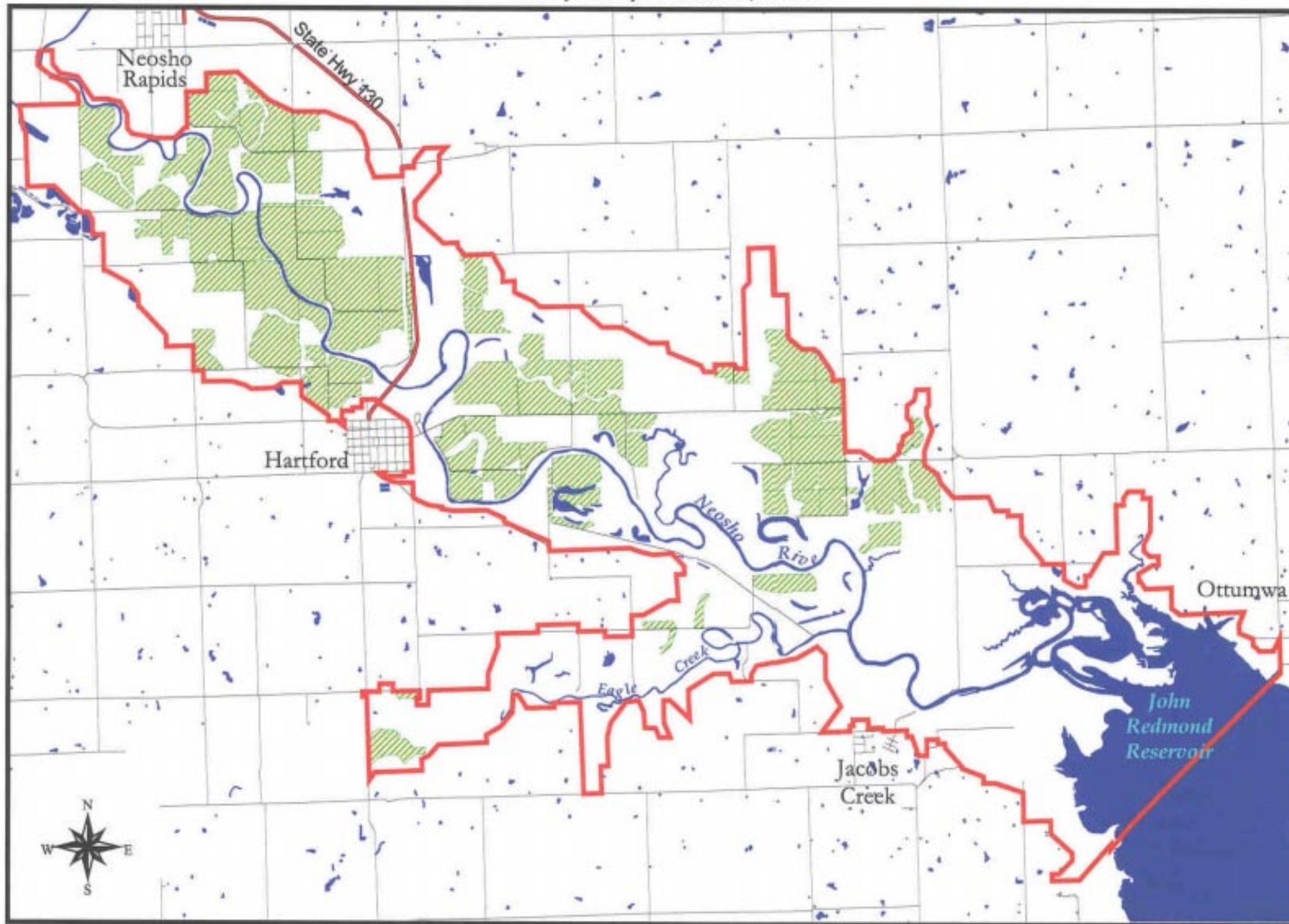
- Created Wetland
- Natural Wetland



Map # 5 Wetland Units Map

Flint Hills National Wildlife Refuge

Coffey and Lyon Counties, Kansas



Type	Total Acres
AGRICULT	4297.3660

Legend

- Refuge Boundary
- Croplands as of 1999

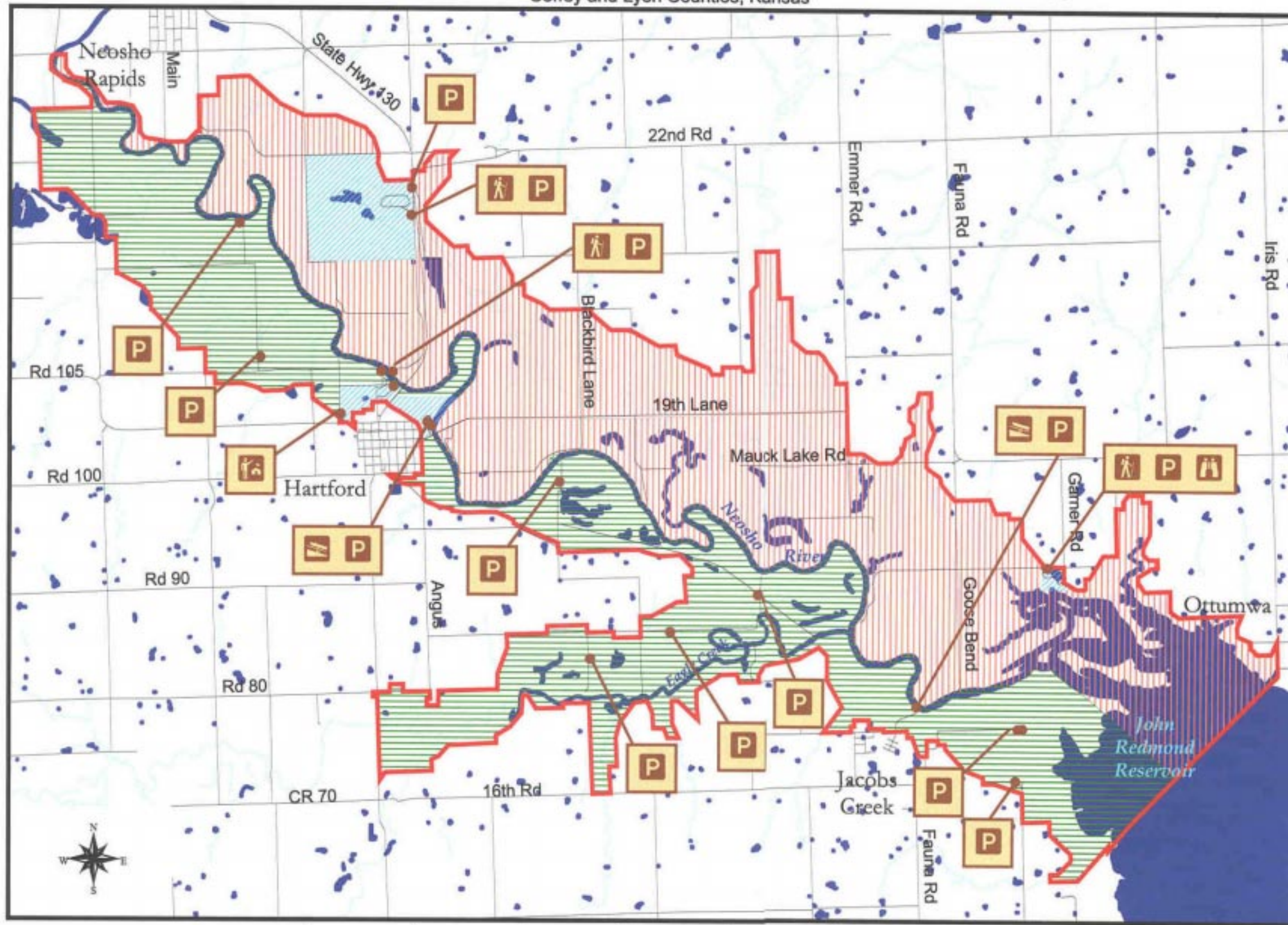


Agriculture fields digitized from Refuge data August 1999

Map # 6 Cropland/Farmland Map

Flint Hills National Wildlife Refuge

Coffey and Lyon Counties, Kansas



Legend

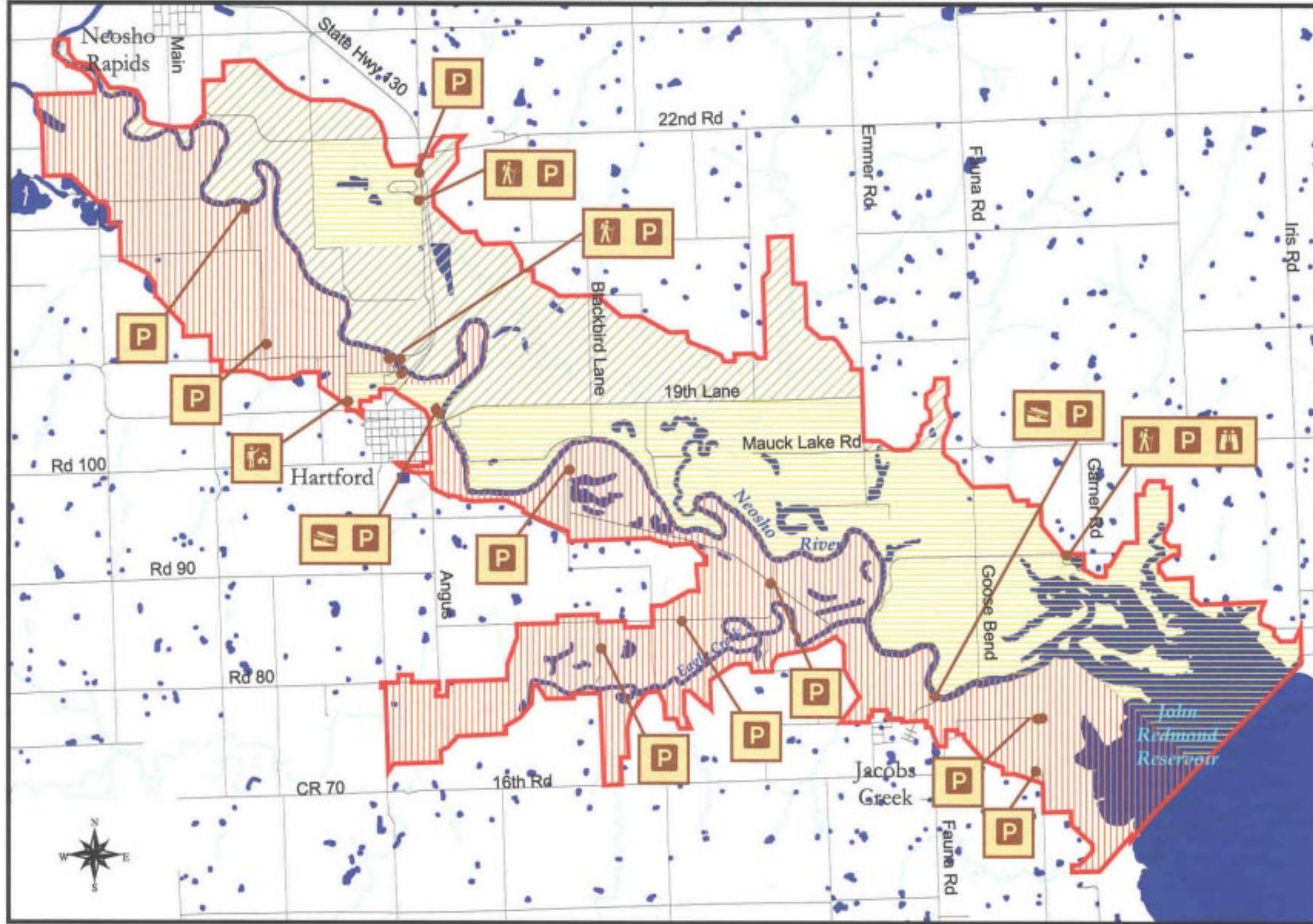
- Public Use
- Open All Year
- Open All Year - Except Hunting
- Closed Nov. 1 - March 1
- Refuge Headquarters
- Parking Area
- Hiking Trail
- Boat Ramp
- Observation Tower

Please Consult Refuge and State Hunting and Public Use Regulations for Specific Guidelines

Map #7 Public Use Map

Flint Hills National Wildlife Refuge

Coffey and Lyon Counties, Kansas



Legend

- Hunting**
- Open All Year Round
 - Closed All Year Round
 - Open to Hunting Mar.2 - Oct 31
Except Waterfowl Hunting
Closed to All Hunting Nov.1 - Mar.1
 - Refuge Headquarters
 - Parking Area
 - Hiking Trail
 - Boat Ramp
 - Observation Tower
- Please Consult Refuge and State
Hunting and Public Use Regulations
for Specific Guidelines*

Map #8 Hunting Map

Wetlands of Flint Hills NWR

Coffey and Lyon Counties, Kansas



Acres of Wetlands Within Refuge Boundary

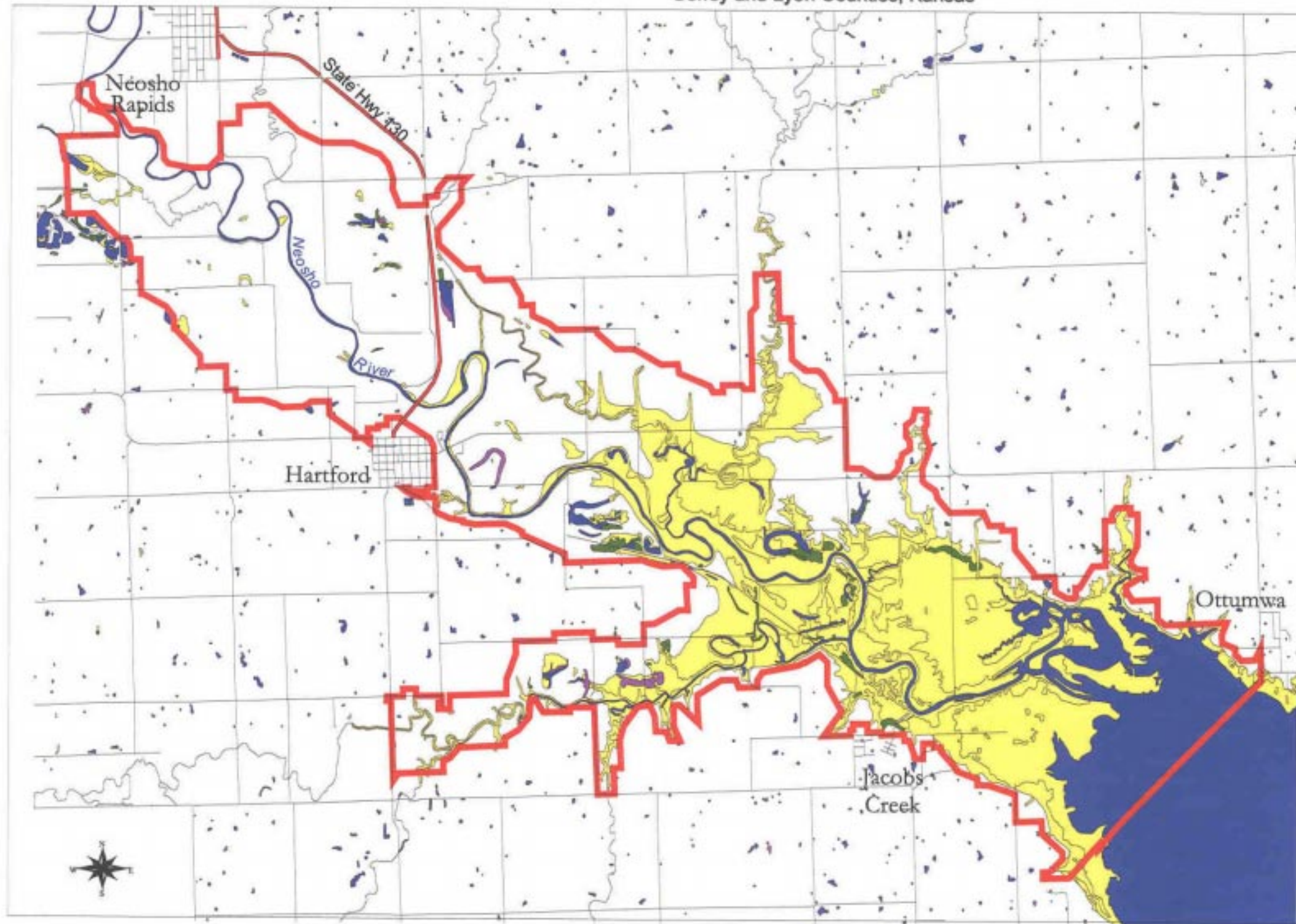
Frequency	Regime	Acres
45	SALE	1944.731
3	RIVER	136.148
75	SEASONAL	149.742
10	SEMI-PERMANENT	61.071
249	TEMPORARY	6253.223
59	UPLAND	10233.358

Based on FWS-NWI Data

Legend

Wetland Water Regimes

- Open Water
- River
- Seasonally Flooded
- Semipermanently Flooded
- Temporarily Flooded
- Upland



NWI Data based on May 1985, June 1985, and June 1986 color infrared aerial photographs.



Map #9 Wetland Habitat Map

Habitats of Refuge Concern Flint Hills NWR

Coffey and Lyon Counties, Kansas



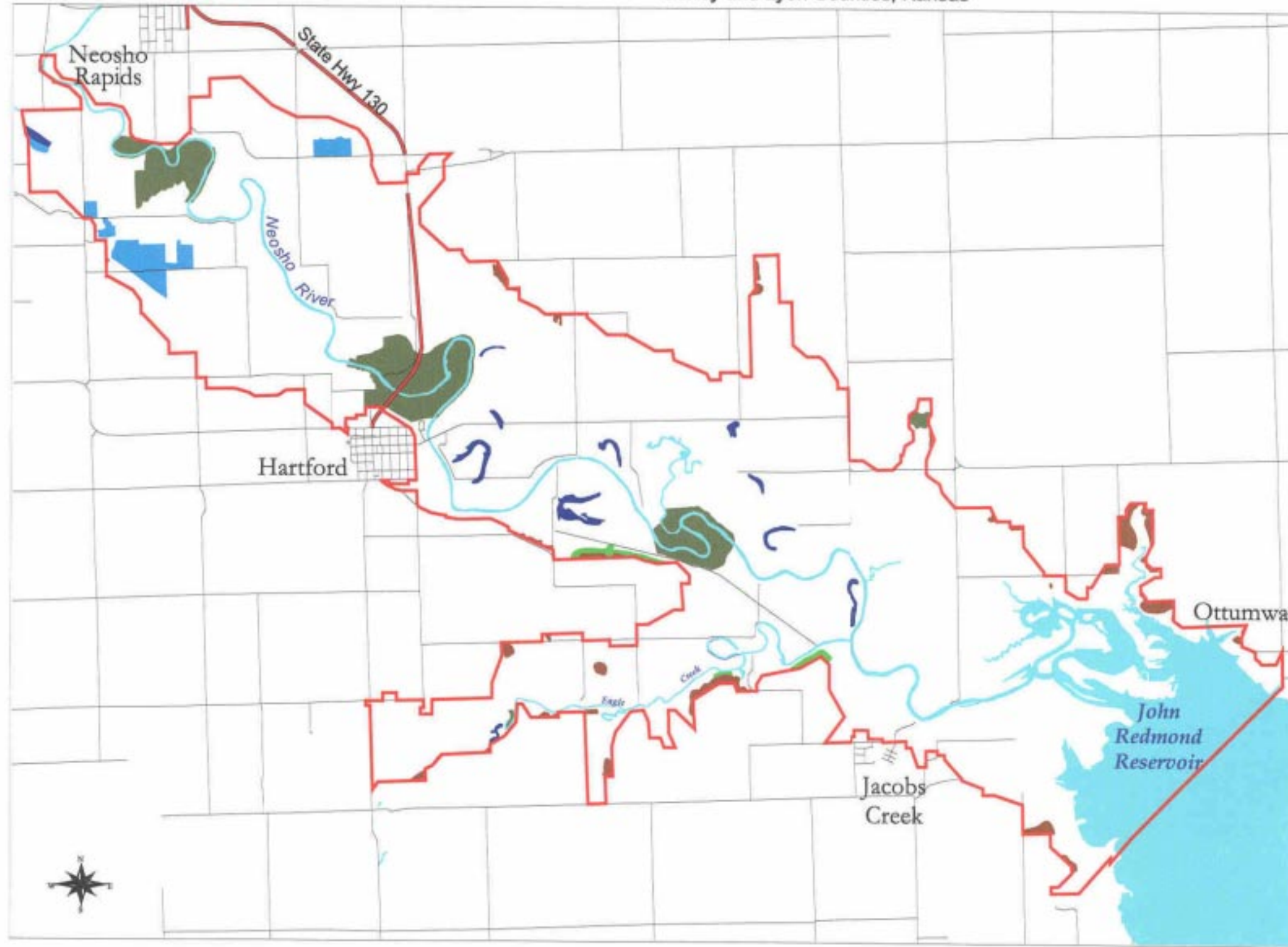
Acres of Habitats of Refuge Concern

Habitat Type	Acreage
Upland Prairie	225,2880
Ozarkian Woodlands	15,9440
Bottomland Hardwoods	741,3750
Wet Meadow	196,5340
Oxbow	132,6820

Legend

Habitat Types

- Upland Prairie
- Ozarkian Woodlands
- Bottomland Hardwoods
- Wet Meadow
- Oxbow



Map #10 Habitats of Refuge Concern