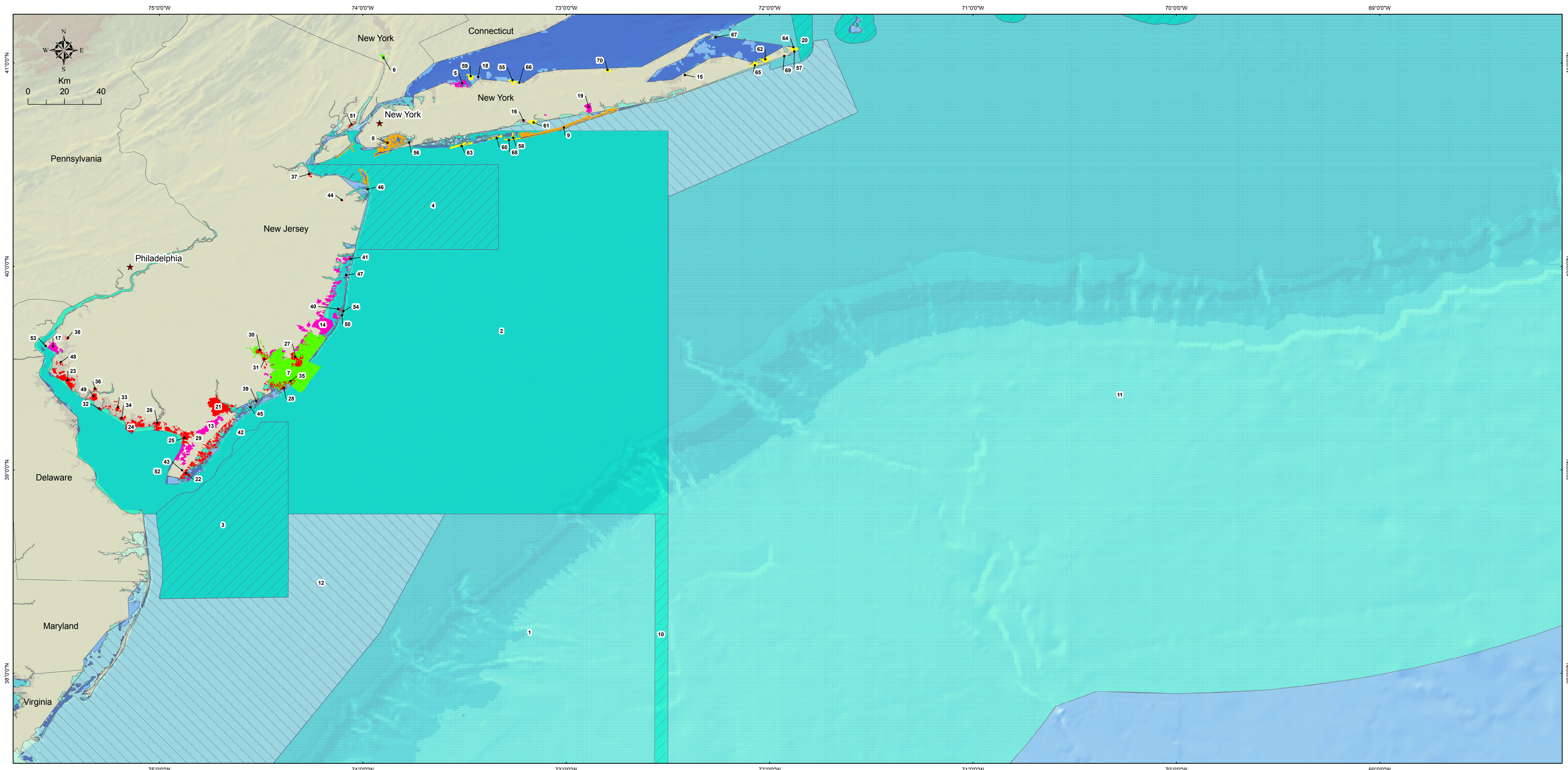


MARINE PROTECTED AREAS in NEW JERSEY and NEW YORK



This map provides information regarding the distribution of marine protected areas throughout New Jersey and New York. The boundaries for the areas shown were compiled into a spatial database by NOAA's Marine Protected Areas Center. Data were obtained from various federal agencies and participating state and local management offices and are current as of May 2008. Note that certain data gaps still exist. Please contact the MPA Center to provide information on sites that are missing from this catalog. This map depicts MPAs in the states of New Jersey and New York and adjacent federal waters only. Neighboring state MPAs are omitted.

- State of New Jersey MPAs
- State of New York MPAs
- National Wildlife Refuges
- National Park Service MPAs
- National Estuarine Research Reserves
- National Marine Fisheries Service Sites
- Site ID (see table to the right for classification)

Map Created May 9, 2008

CONSERVATION FOCUS
Most MPAs have legally established goals, conservation objectives, and intended purpose(s). Common examples include MPAs created to conserve biodiversity in support of research and education; to protect benthic habitat in order to recover over-fished stocks; and to protect and interpret shipwrecks for maritime education. These descriptors of an MPA are reflected in the site's Conservation Focus, which represents the characteristics of the area that the MPA was established to conserve. The Conservation Focus, in turn, influences many fundamental aspects of the site, including its design, location, size, scale, management strategies and potential contribution to surrounding ecosystems. U.S. MPAs generally address one or more of these areas of Conservation Focus:

- Natural Heritage:** MPAs or zones established and managed wholly or in part to sustain, conserve, restore, and understand the protected area's natural biodiversity, populations, communities, habitats, and ecosystems; the ecological and physical processes upon which they depend; and, the ecological services, human uses and values they provide to this and future generations.
- Cultural Heritage:** MPAs or zones established and managed wholly or in part to protect and understand submerged cultural resources that reflect the nation's maritime history and traditional cultural connections to the sea.
- Sustainable Production:** MPAs or zones established and managed wholly or in part with the explicit purpose of supporting the continued extraction of renewable living resources (such as fish, shellfish, plants, birds, or mammals) that live within the MPA, or that are exploited elsewhere but depend upon the protected area's habitat for essential aspects of their ecology or life history.

LEVEL OF PROTECTION
MPAs in the U.S. vary widely in the level and type of legal protections afforded to the site's natural and cultural resources and ecological processes. Any MPA, or management zone within a larger MPA, can be characterized by one of the following six levels of protection, which will directly influence its effects on the environment and human uses.

- Uniform Multiple-Use:** MPAs or zones with a consistent level of protection and allowable activities, including certain extractive uses, across the entire protected area.
- Zoned Multiple-Use:** MPAs that allow some extractive activities throughout the entire site, but that use marine zoning to allocate specific uses to compatible places or times in order to reduce user conflicts and adverse impacts.
- Zoned Multiple-Use With No-Take Area(s):** Multiple-use MPAs that contain at least one legally established management zone in which all resource extraction is prohibited.
- No-Take:** MPAs or zones that allow human access and even some potentially harmful uses, but that totally prohibit the extraction or significant destruction of natural or cultural resources.
- No Impact:** MPAs or zones that allow human access, but that prohibit all activities that could harm the site's resources or disrupt the ecological or cultural services they provide.
- No Access:** MPAs or zones that restrict all human access to the area in order to prevent potential ecological disturbance, unless specifically permitted for designated special uses such as research, monitoring or restoration.

ID	Site Name	Level of Protection	Primary Conservation Focus	Fish Restrictions	Area (km ²)	ID	Site Name	Level of Protection	Primary Conservation Focus	Fish Restrictions	Area (km ²)
1	Mid-Atlantic Coastal Waters Area	Uniform Multiple Use	Natural Heritage	Commercial Restricted	111,787,498.005	36	Cohansey River Wildlife Management Area	Uniform Multiple Use	Natural Heritage	Recreational Restricted	1,876.658
2	Waters off New Jersey Closure	Uniform Multiple Use	Natural Heritage	Commercial Restricted	34,746,455.610	37	Chesapeake State Park	Zoned Multiple Use	Natural Heritage	Commercial Prohibited	2,167.938
3	Carl N. Shuster, Jr. Horseshoe Crab Reserve	Uniform Multiple Use	Sustainable Production	All Restricted	4,132,153.698	38	Salem River Wildlife Management Area	Uniform Multiple Use	Natural Heritage	Commercial Prohibited	1,410.719
4	Mudflats Closure	Uniform Multiple Use	Natural Heritage	Commercial Restricted	2,786,516.364	39	Pork Island Wildlife Management Area	Uniform Multiple Use	Sustainable Production	Commercial Prohibited	929.243
5	Oyster Bay National Wildlife Refuge	Uniform Multiple Use	Sustainable Production	Commercial Prohibited	13,811,654	40	Sedge Islands Wildlife Management Area	Uniform Multiple Use	Sustainable Production	Commercial Prohibited	755.768
6	Hudson River National Estuarine Research Reserve	Uniform Multiple Use	Natural Heritage	Commercial Restricted	9,850,476	41	Swan Point State Natural Area	Uniform Multiple Use	Natural Heritage	Commercial Prohibited	591.334
7	Jacques Cousteau National Estuarine Research Reserve	Uniform Multiple Use	Natural Heritage	All Restricted	450,514.936	42	Conson's Inlet State Park	Zoned Multiple Use	Natural Heritage	Commercial Prohibited	554.954
8	Gateway National Recreation Area	Zoned Multiple Use	Natural Heritage	All Restricted	67,508.089	43	Cape Island Wildlife Management Area	Uniform Multiple Use	Natural Heritage	Recreational Restricted	319.970
9	Fire Island National Seashore	Zoned Multiple Use	Natural Heritage	All Restricted	57,668.908	44	Swimming River Natural Area	Uniform Multiple Use	Natural Heritage	Commercial Prohibited	352.276
10	Offshore Lobster Waters	Uniform Multiple Use	Natural Heritage	Commercial Restricted	336,041,851.814	45	Malibu Beach Wildlife Management Area	Uniform Multiple Use	Sustainable Production	Recreational Restricted	248.173
11	Other Northeast Gilnet Waters Area	Uniform Multiple Use	Natural Heritage	Commercial Restricted	297,428,210.171	46	Navesink River Wildlife Management Area	Uniform Multiple Use	Sustainable Production	Recreational Restricted	218.620
12	Southern Nearshore Lobster Waters	Uniform Multiple Use	Natural Heritage	Commercial Restricted	69,705,891.479	47	Upper Barnegat Bay Wildlife Management Area	Uniform Multiple Use	Sustainable Production	Commercial Prohibited	66.173
13	Cape May National Wildlife Refuge	Uniform Multiple Use	Natural Heritage	Commercial Prohibited	73,271.017	48	Abbotts Meadow Wildlife Management Area	Uniform Multiple Use	Natural Heritage	Recreational Restricted	2,661.183
14	Edwin B. Forsythe National Wildlife Refuge	Zoned No Take	Natural Heritage	Commercial Prohibited	276,834.858	49	Dix Wildlife Management Area	Uniform Multiple Use	Natural Heritage	Recreational Restricted	9,196.555
15	Conscience Point National Wildlife Refuge	No Impact	Natural Heritage	All Prohibited	248.657	50	Barnegat Lighthouse State Park	Uniform Multiple Use	Natural Heritage	Commercial Prohibited	47.232
16	Sealuck National Wildlife Refuge	No Access	Natural Heritage	Commercial Prohibited	877.711	51	Liberty State Park	Zoned Multiple Use	Cultural Heritage	Commercial Prohibited	2,216.461
17	Supawna Meadows National Wildlife Refuge	Uniform Multiple Use	Natural Heritage	Commercial Restricted	17,908.622	52	Higbee Beach Wildlife Management Area	Uniform Multiple Use	Natural Heritage	Recreational Restricted	135.445
18	Target Rock National Wildlife Refuge	Uniform Multiple Use	Natural Heritage	Commercial Prohibited	329.552	53	Fort Mott State Park	Uniform Multiple Use	Natural Heritage	Commercial Prohibited	6,359
19	Wertheim National Wildlife Refuge	Uniform Multiple Use	Natural Heritage	Commercial Prohibited	11,590.583	54	Island Beach State Park	Zoned Multiple Use	Natural Heritage	Commercial Prohibited	862.17
20	Northern Inshore State Lobster Waters Area	Uniform Multiple Use	Natural Heritage	Commercial Restricted	15,729,944.594	55	Governor Alfred E. Smith/Sunken Meadow State Park	Uniform Multiple Use	Natural Heritage	No Restrictions	4,687.270
21	Tuckahoe Wildlife Management Area	Uniform Multiple Use	Natural Heritage	Commercial Prohibited	60,836.123	56	Bayswater Point State Park	Uniform Multiple Use	Natural Heritage	No Restrictions	734.71
22	Cape May Wetlands Wildlife Management Area	Uniform Multiple Use	Natural Heritage	Recreational Restricted	49,855.487	57	Camp Hero State Park	Uniform Multiple Use	Natural Heritage	No Restrictions	3,000.454
23	Mad Horse Creek Wildlife Management Area	Uniform Multiple Use	Sustainable Production	Recreational Restricted	32,549.533	58	Caprice State Park	Uniform Multiple Use	Natural Heritage	No Restrictions	2,191.977
24	Egg Island Wildlife Management Area	Uniform Multiple Use	Sustainable Production	Recreational Restricted	32,072.311	59	Caumsett State Historic Park	Uniform Multiple Use	Natural Heritage	No Restrictions	6,187.498
25	Dennis Creek Wildlife Management Area	Uniform Multiple Use	Natural Heritage	Recreational Restricted	23,380.895	60	Gilgo State Park	Uniform Multiple Use	Natural Heritage	No Restrictions	4,305.621
26	Nantuxet Wildlife Management Area	Uniform Multiple Use	Natural Heritage	Recreational Restricted	21,433.618	61	Heckscher State Park	Uniform Multiple Use	Natural Heritage	No Restrictions	6,331.526
27	Great Bay Boulevard Wildlife Management Area	Zoned Multiple Use	Natural Heritage	Recreational Restricted	19,717.221	62	Hither Hills State Park	Uniform Multiple Use	Natural Heritage	No Restrictions	6,970.464
28	Absecon Wildlife Management Area	Uniform Multiple Use	Sustainable Production	Commercial Prohibited	13,857.466	63	Jones Beach State Park	Uniform Multiple Use	Natural Heritage	No Restrictions	10,278.207
29	Cape May Wetlands State Natural Area	Uniform Multiple Use	Natural Heritage	Commercial Prohibited	11,203.914	64	Montauk Point State Park	Uniform Multiple Use	Natural Heritage	No Restrictions	3,272.002
30	Swan Bay Wildlife Management Area	Uniform Multiple Use	Natural Heritage	Recreational Restricted	7,447.917	65	Napeague State Park	Uniform Multiple Use	Natural Heritage	No Restrictions	6,016.300
31	Port Republic Wildlife Management Area	Uniform Multiple Use	Natural Heritage	Commercial Prohibited	4,835.409	66	Nissequoque River State Park	Uniform Multiple Use	Natural Heritage	No Restrictions	566.834
32	New Sweden Wildlife Management Area	Uniform Multiple Use	Sustainable Production	Recreational Restricted	5,349.362	67	Onet Beach State Park	Uniform Multiple Use	Natural Heritage	No Restrictions	1,409.528
33	Nantuxet Wildlife Management Area	Uniform Multiple Use	Natural Heritage	Recreational Restricted	5,190.336	68	Robert Moses State Park - Long Island	Uniform Multiple Use	Natural Heritage	No Restrictions	14,715.366
34	Fortescue Wildlife Management Area	Uniform Multiple Use	Natural Heritage	Recreational Restricted	4,036.469	69	Shadmoor State Park	Uniform Multiple Use	Natural Heritage	No Restrictions	412.144
35	North Brigantine State Natural Area	Uniform Multiple Use	Natural Heritage	Commercial Prohibited	3,070.132	70	Wildwood State Park	Uniform Multiple Use	Natural Heritage	No Restrictions	3,192.227