

PROVO RIVER RESTORATION PROJECT

2005 Construction Season Q & A

What is the Provo River Restoration Project?

The Utah Reclamation Mitigation and Conservation Commission, a federal agency, is responsible for implementing the Provo River Restoration Project (PRRP). Its purpose is to restore the river pattern and ecological function of the middle Provo River (from Jordanelle Dam to Deer Creek Reservoir) to make up for fish, wildlife and related recreational losses caused by federal water reclamation projects in Utah, particularly the Central Utah Project. The project began construction in 1999 and consists of creating a multiple-thread, meandering river channel, reconnecting the river to existing remnants of historic secondary channels and constructing small side channels to recreate aquatic features. Existing levees are set back to create a flood plain. Streamside vegetation is planted and fostered to provide environments for healthy fisheries and riparian communities. The project will provide a protected 800 to 2,200-foot-wide corridor along the entire reach of the restored middle Provo River. For more information, visit our website at: www.mitigationcommission.gov

Where and when will work take place this year?

Tentatively, we plan to begin construction July 16, 2005 on the river downstream of the River Road crossing in Midway (see map on reverse side). This reach, which we refer to as Reach 6, extends downstream from River Road approximately 1 ½ miles where it joins a reach reconstructed in 2001-2002. While there are still some ongoing negotiations to acquire some of the lands within this project area, we are optimistic these matters will be resolved in time to allow construction as planned. Other work planned this year includes improvements to the public access parking areas. We will be constructing accessible fishing platforms at the access point immediately south of Midway Lane and at the Cottonwood Canyon/White Bridge access point. We will also be mounting permanent information and educational displays at the access areas.

What remains to be done?

Reach 6 (this year's construction area) is the last long reach of the Middle Provo River to be reconstructed. This work may extend from this year into next before it is completed. A small stretch of river immediately downstream of Jordanelle Dam will be modified in 2006. Also, a section of river upstream of Midway Lane, which was not historically channelized and does not require major realignment, may be enhanced through instream structure improvements. A map showing the restored reaches of the Middle Provo River and their year of completion is available on our website ([click here](#)).

Will you close public access during construction?

Yes. We plan to close public access to the construction area (from River Road downstream approximately 1 ½ miles) from July 16 – December 31, 2005. If construction in the area is not completed by this date, we will continue the access closure as long as it is necessary for public safety. In addition, this access closure may also be in effect during construction in 2006. We will post the closed areas with signs and provide closure updates on our website.

Will I still be able to park on the dike road when you are done?

No. The dike and dirt road on either side of the river along Reach 6 will be removed as part of the river restoration project. Parking and access into and out of the river corridor is limited to the seven sites identified in the Provo River Restoration Project Environmental Impact Statement. An approved parking and access area (River Road – South) nearest to the construction site is shown on the accompanying map.

Where can I park and gain access to the river corridor?

Seven Angler Access sites with parking lots, restrooms and educational displays are identified in the Provo River Restoration Project's Environmental Impact Statement. These were selected to provide anglers and the public the best possible experience and to direct river access, while minimizing impacts to wildlife and habitat being restored by the Project. Being a "good neighbor" to adjacent private landowners also has been a long-standing project priority and commitment, which requires restricting parking and access to and from the river corridor only to designated areas.

Six of the Angler Access points have been constructed where you may now park. Construction of the last site is anticipated to occur this year or next. These are the only places where parking and access into and out of the river corridor is allowed. We've named the sites based on their location: Jordanelle Access Site, Cottonwood Canyon/White Bridge Access Site, River Road-North Access Site, River Road-South Access Site, Midway Lane-North Access Site, Midway Lane-South Access Site and Charleston Access site.

Have you acquired contiguous public ownership the entire length of the corridor?

While we are in the process of acquiring contiguous public ownership of the middle Provo River corridor, it is not yet all in the public domain; we are about 90% complete. A map showing private/public ownership areas and access points along the corridor will soon be available on our website. Please respect private and public property and obtain permission from private landowners as necessary before fishing or otherwise enjoying the corridor.

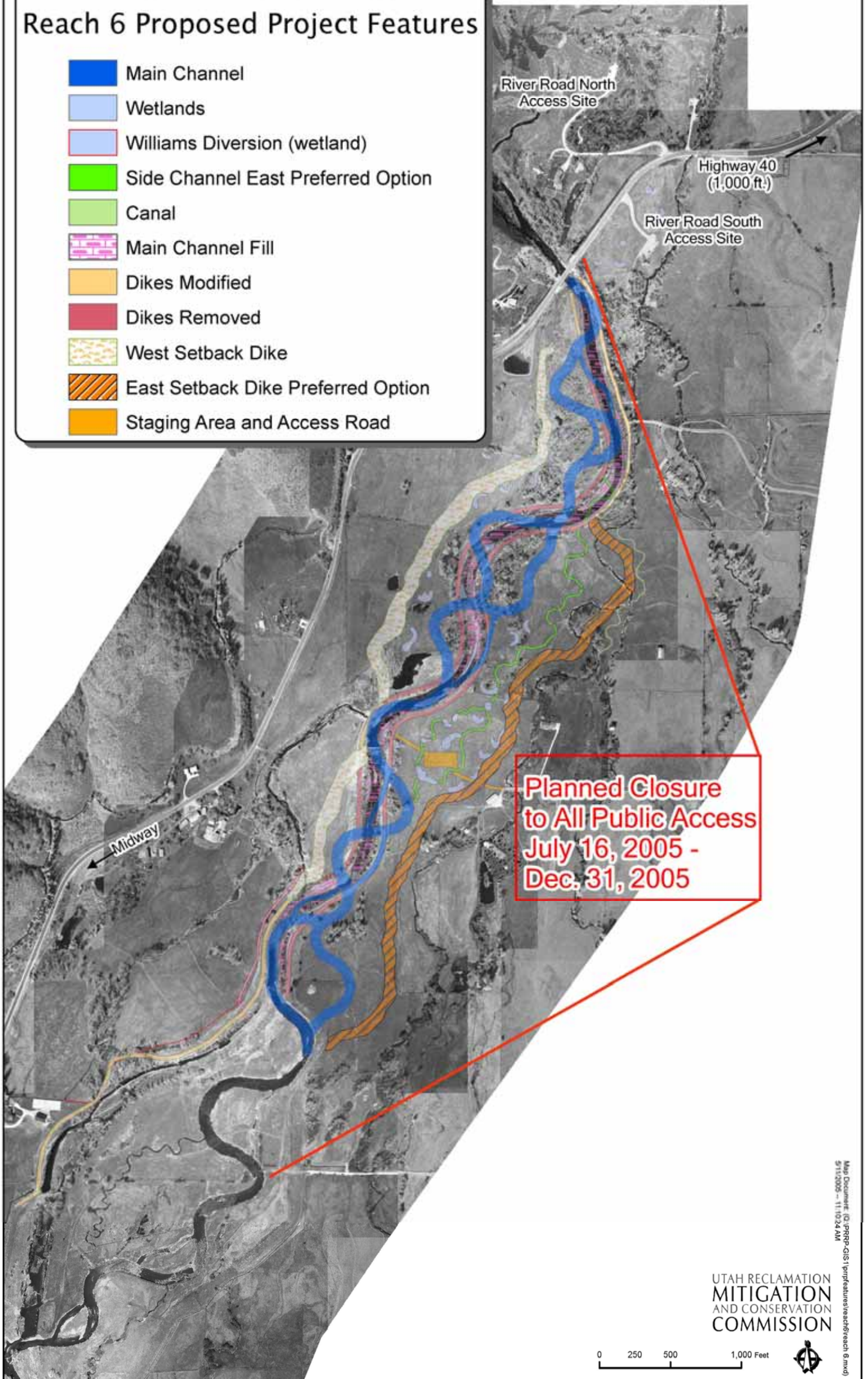
Who is responsible for keeping the corridor clean?

It is the responsibility of all river users to dispose of their trash properly. Trash receptacles are located at each access site along the river. In addition, some flyfishing organizations and fly shops generously donate their time to organizing river cleanup days. We post information about cleanup days we are aware of on our website. Please respect our effort to restore the Middle Provo River to a more natural condition. With your cooperation in using approved access points and keeping the corridor clean, this project will increase the diversity of fish, wildlife habitat and riparian vegetation, leading to greater public enjoyment of the Provo River and its resources for years to come.

For more maps and information about the Provo River Restoration Project, or the Utah Reclamation Mitigation and Conservation Commission, visit our website at: www.mitigationcommission.gov, or contact Diane Simmons at (801) 524-3146

Provo River Restoration Project Reach 6 Proposed Project Features

-  Main Channel
-  Wetlands
-  Williams Diversion (wetland)
-  Side Channel East Preferred Option
-  Canal
-  Main Channel Fill
-  Dikes Modified
-  Dikes Removed
-  West Setback Dike
-  East Setback Dike Preferred Option
-  Staging Area and Access Road



**Planned Closure
to All Public Access
July 16, 2005 -
Dec. 31, 2005**

Map Document: Q:\PRPP-GIS\1\prpp\restoration\reach6.mxd
5/15/2005 - 11:10:24 AM

UTAH RECLAMATION
MITIGATION
AND CONSERVATION
COMMISSION

