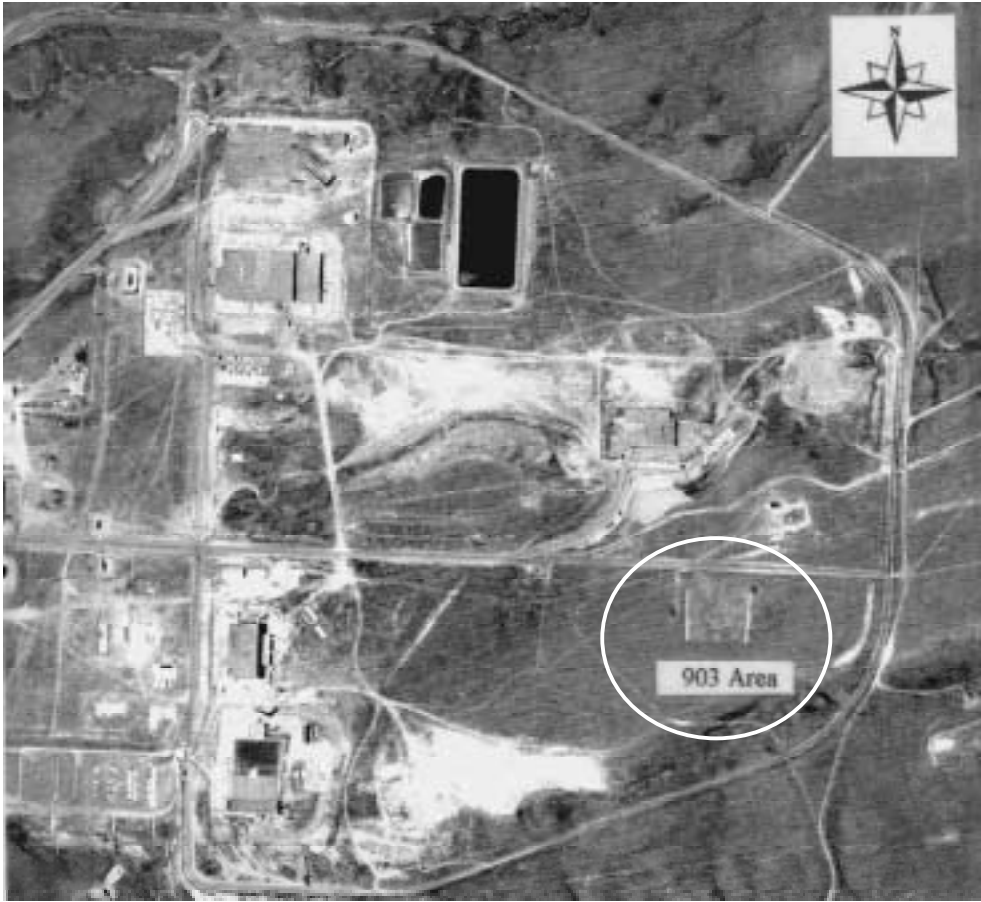


APPENDIX A: HISTORICAL PHOTOGRAPHS OF 903 BARREL STORAGE AREA AND EVIDENCE OF BARREL CORROSION



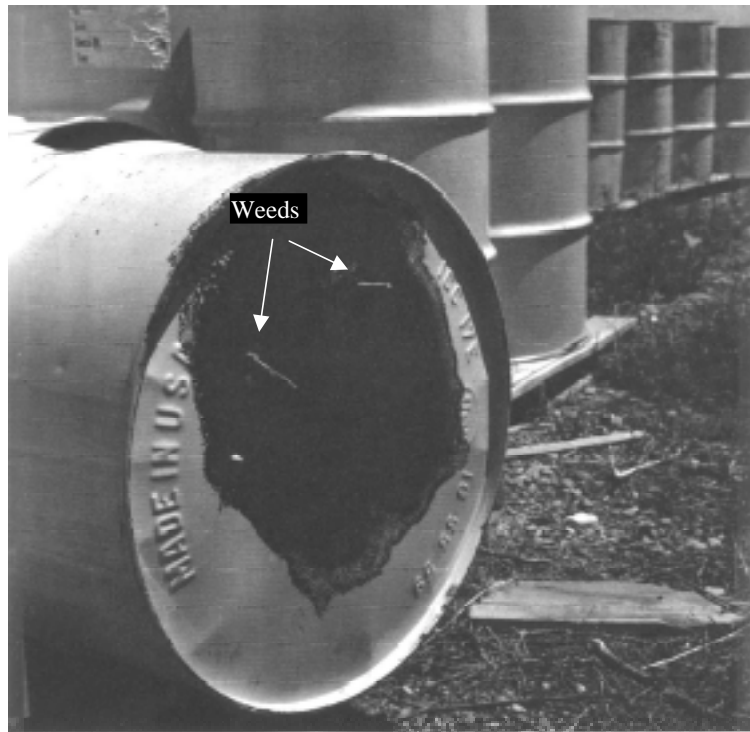
July 9, 1959. Two parallel sets of barrel rows in the 903 area. (White circle added for emphasis)



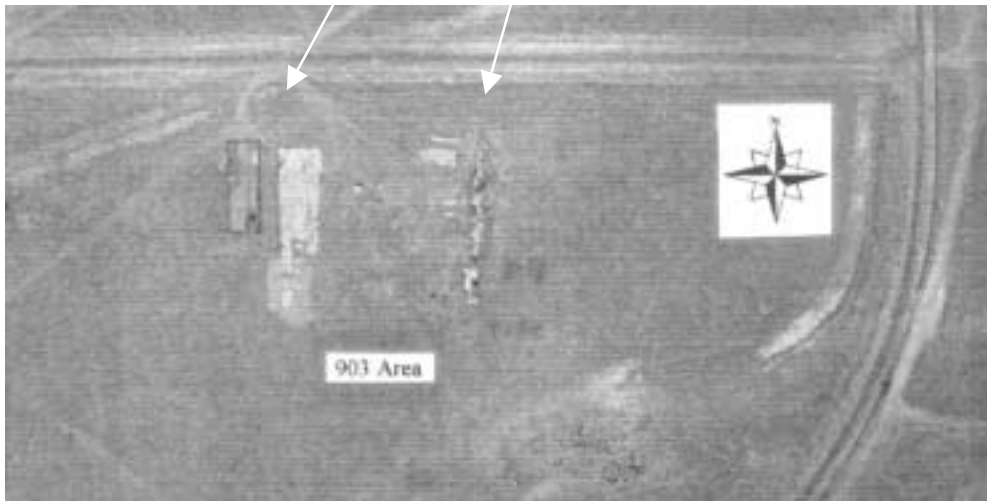
July 9, 1959. Enlargement from above photograph showing 903 area detail.



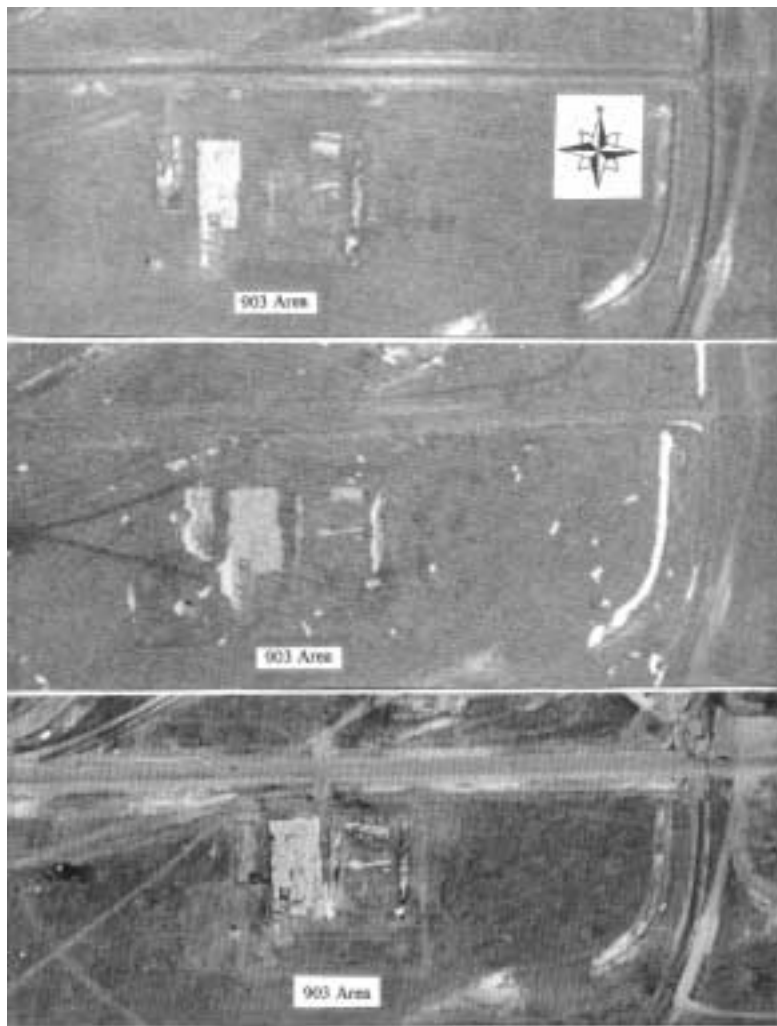
June 1962. Distorted waste drum in 903 Area (center of photograph).



June 1962. A waste drum with weeds penetrating its heavily corroded bottom.



August 11, 1962. A large number of waste barrels tightly packed in the 903 Area.



May 1963(top), March 1964 (middle), April 1965 (bottom photo). Stored barrel inventory increasing over a two-year period.



April, 1965. 903 Area view of tightly spaced barrels.



January 6, 1966. Perspective of the Plant, taken from the west.



Mid-April 1966 (top); April 29, 1967 (middle); April 10, 1968 (bottom). Removal of barrels from the 903 Area.



1995. Wind suspension of dust, north of RFP, near Lafayette Co.



1995. Tractor disturbance of soil, near Lafayette Co.



May 24, 1969. The 903 Area cleared and ready for application of cover materials.



April 1970. The completed 903 Area asphalt pad (photo center).



May 25, 1971. Dust suppressant test areas: three smaller rectangles just east of the 903 asphalt pad (photo center).