

APPENDIX C

DETAILED FIGURES RELATED TO DEPOSITION MONITORING

This appendix provides detailed results of the Rocky Flats deposition monitoring programs. The results of onsite deposition monitoring programs, conducted during May 1963 through November 1965 are presented in Figures C-1 through C-9. Results from an offsite monitoring program, conducted from 1970 through June 1972, are presented in Figures C-10 through C-12. Results from the onsite program, conducted during the same period, are shown in Figure C-13. The data have not been corrected for collection efficiency and thus underestimate the true deposition. Monitoring locations are shown in Figures IV-1 and IV-2.

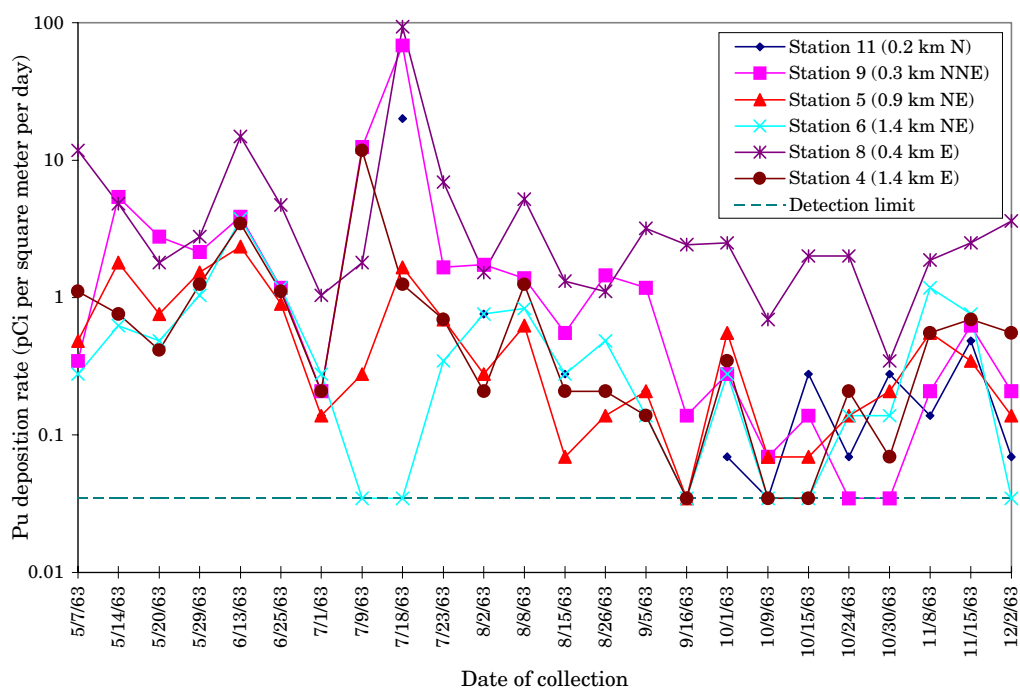


Figure C-1. Plutonium deposition rates measured using gummed paper at stations located in the north to east direction from Building 71 during 1963. No correction has been made for collection efficiency.

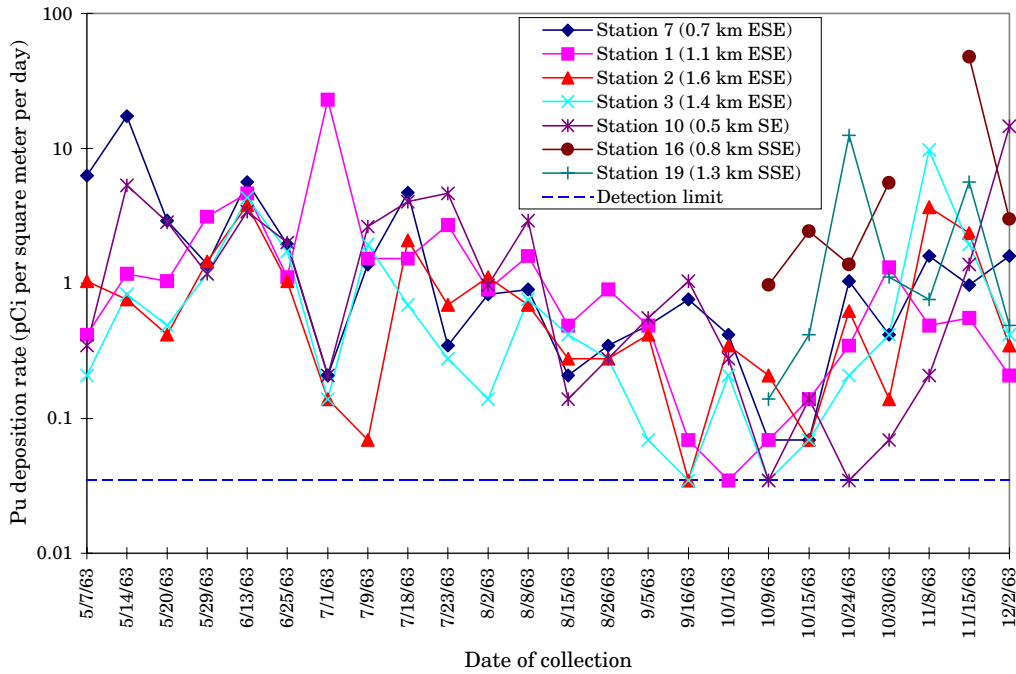


Figure C-2. Plutonium deposition rates measured using gummed paper at stations located in the southeast directions from Building 71 during 1963. No correction has been made for collection efficiency.

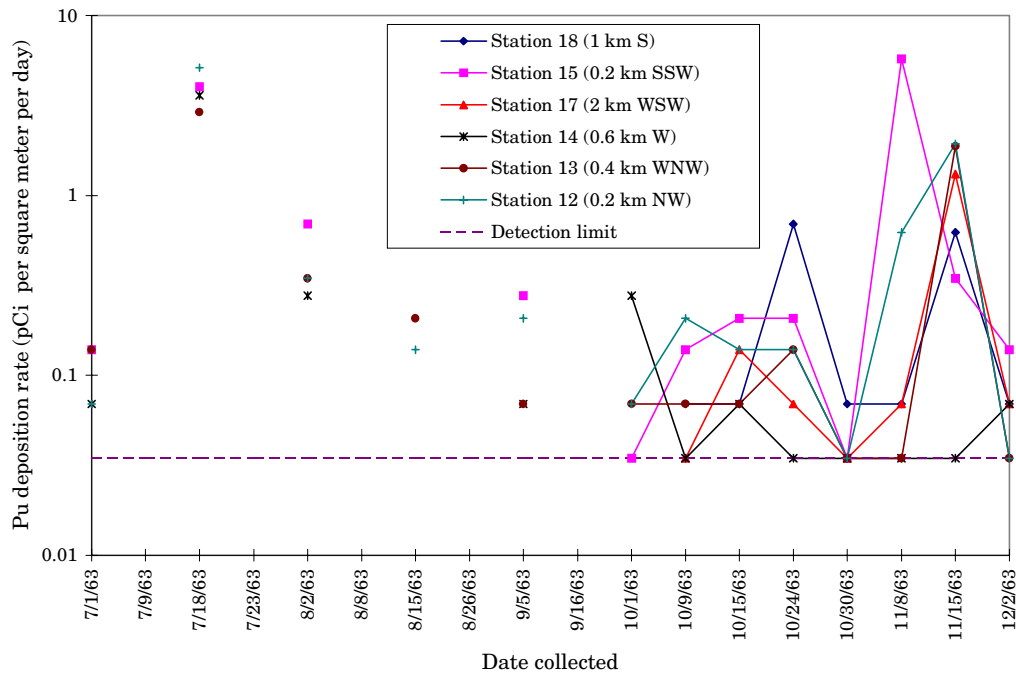


Figure C-3. Plutonium deposition rates measured using gummed paper at stations located in the south to northwest directions from Building 71 during 1963. No correction has been made for collection efficiency.

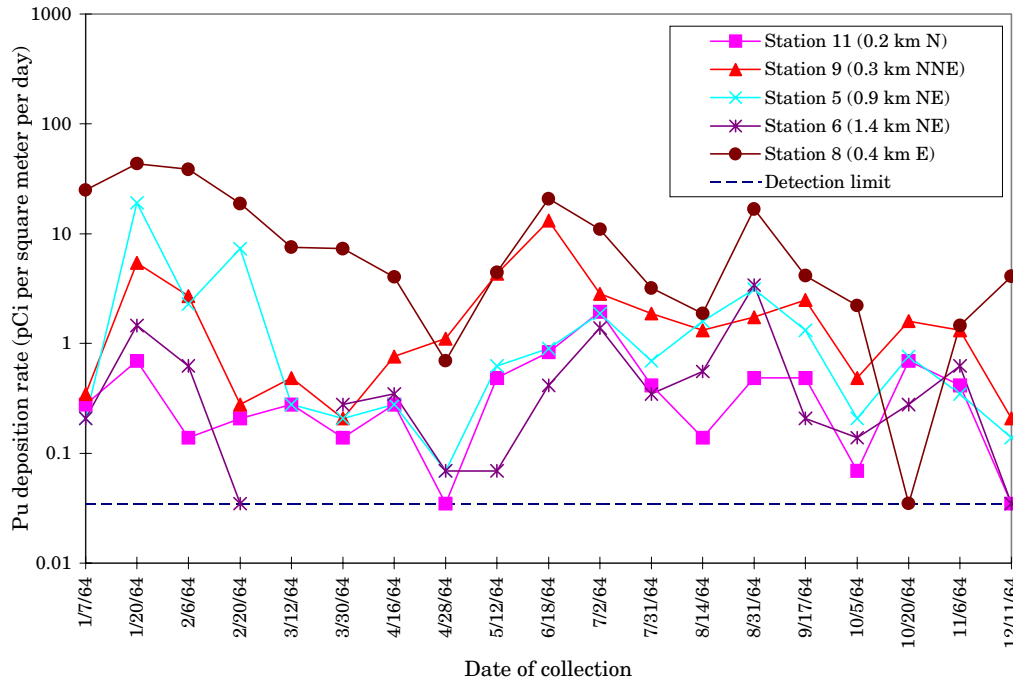


Figure C-4. Plutonium deposition rates measured using gummed paper at stations located in the north to east directions from Building 71 during 1964. No correction has been made for collection efficiency.

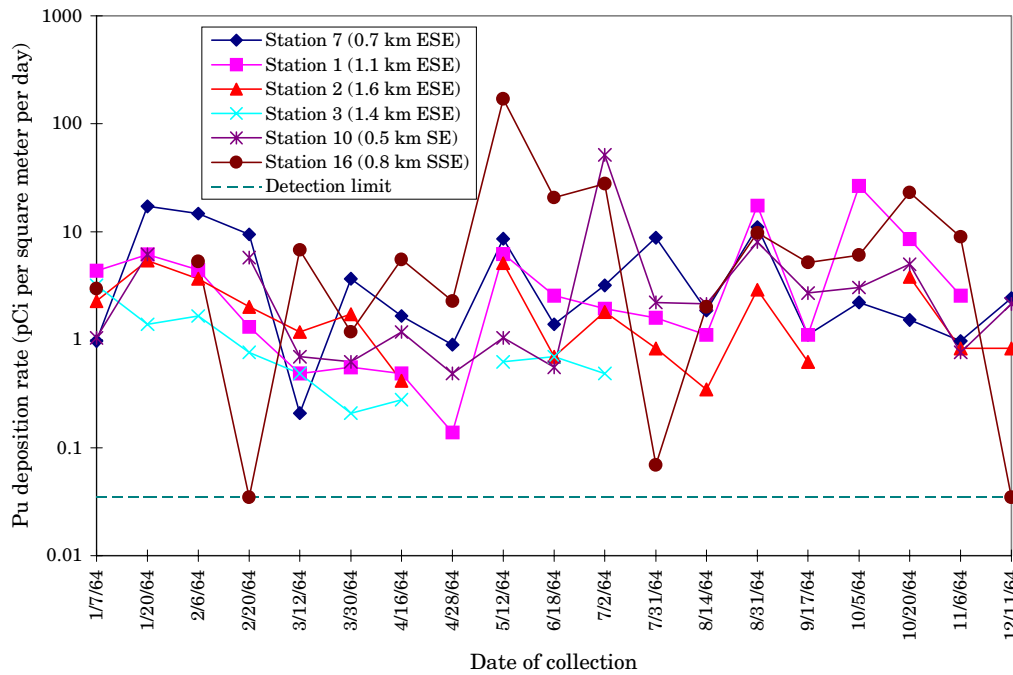


Figure C-5. Plutonium deposition rates measured using gummed paper at stations located in the southeast directions from Building 71 during 1964. No correction has been made for collection efficiency.

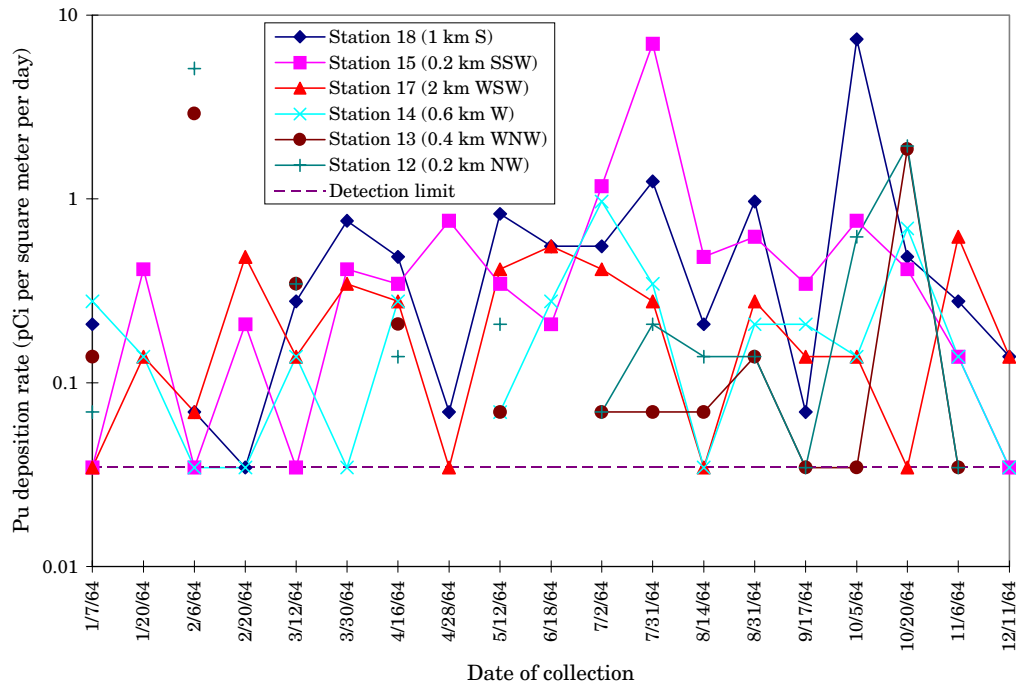


Figure C-6. Plutonium deposition rates measured using gummed paper at stations located in the south to northwest directions from Building 71 during 1964. No correction has been made for collection efficiency.

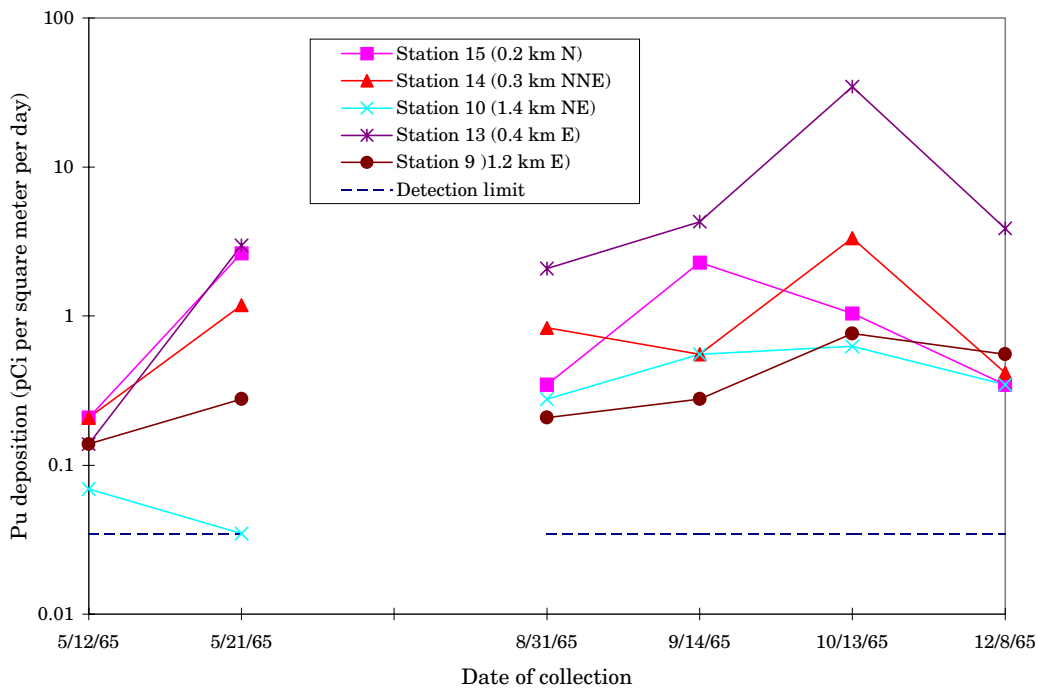


Figure C-7. Plutonium deposition rates measured using gummed paper at stations located in the north to east directions from Building 71 during 1965. No correction has been made for collection efficiency.

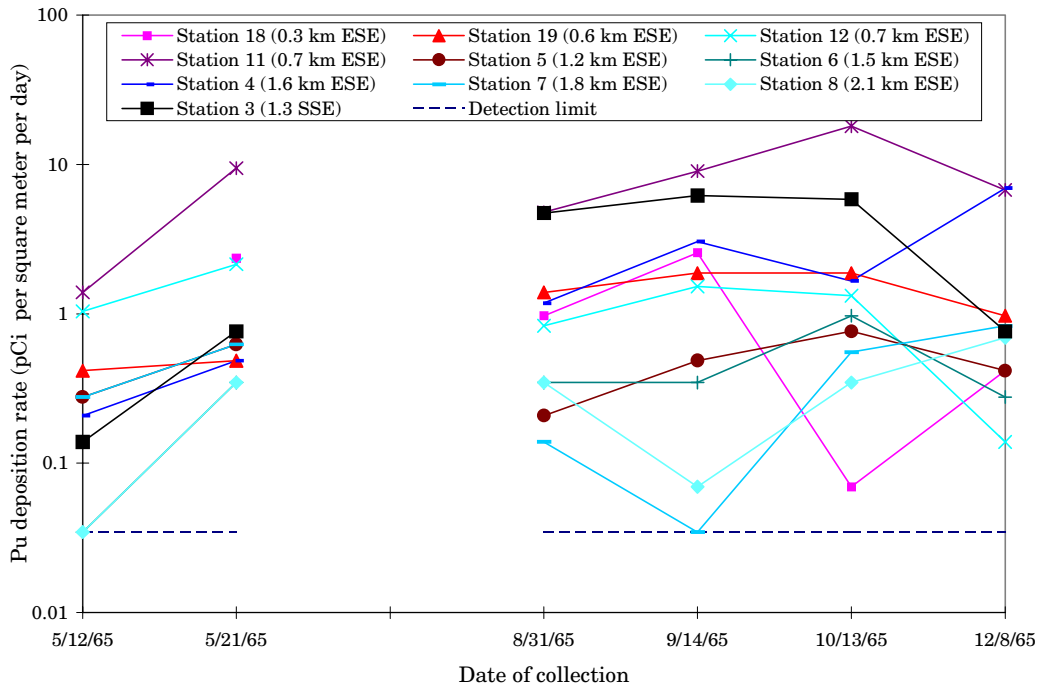


Figure C-8. Plutonium deposition rates measured using gummed paper at stations located in the southeast directions from Building 71 during 1965. No correction has been made for collection efficiency.

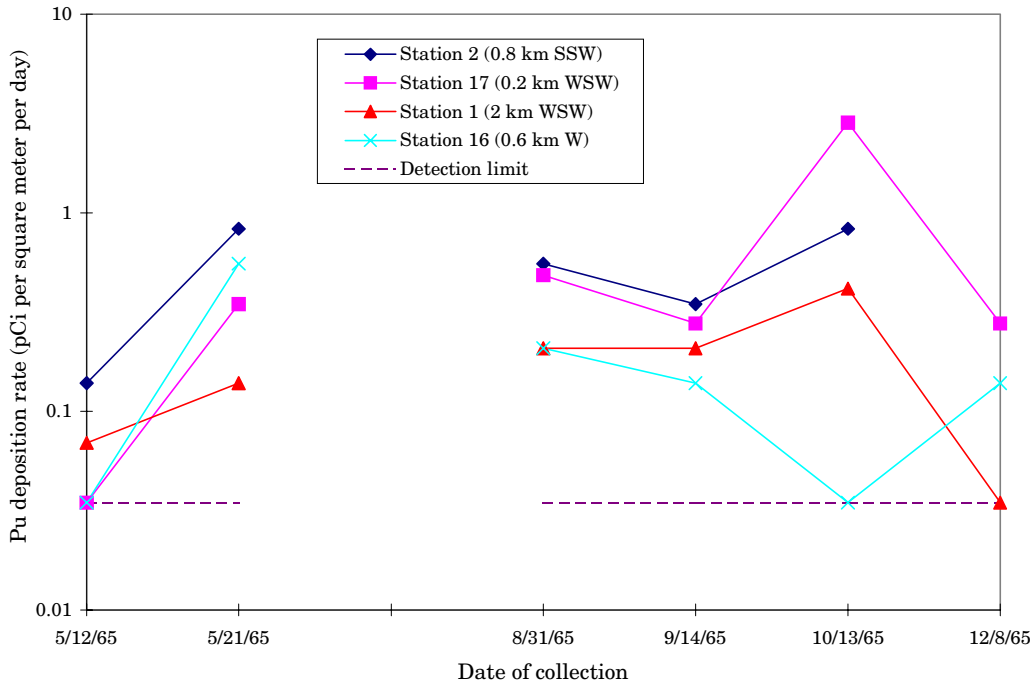


Figure C-9. Plutonium deposition rates measured using gummed paper at stations located in the south to west directions from Building 71 during 1965. No correction has been made for collection efficiency.

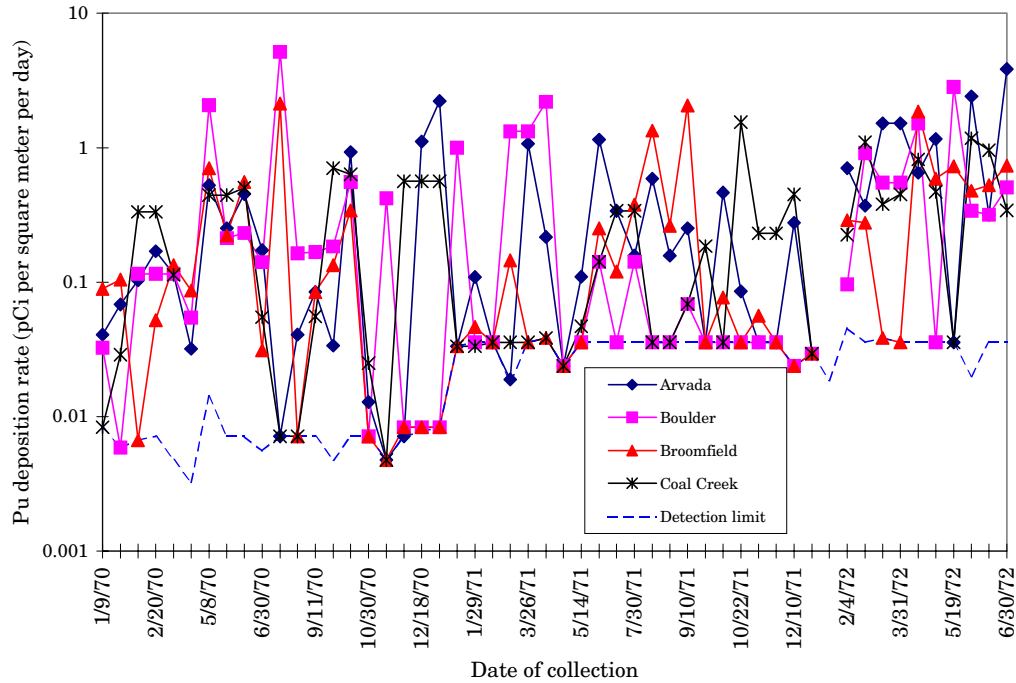


Figure C-10. Plutonium deposition rates measured using gummed paper at stations located in Arvada, Boulder, Broomfield, and Coal Creek from 1970 through June 1972. No correction has been made for collection efficiency.

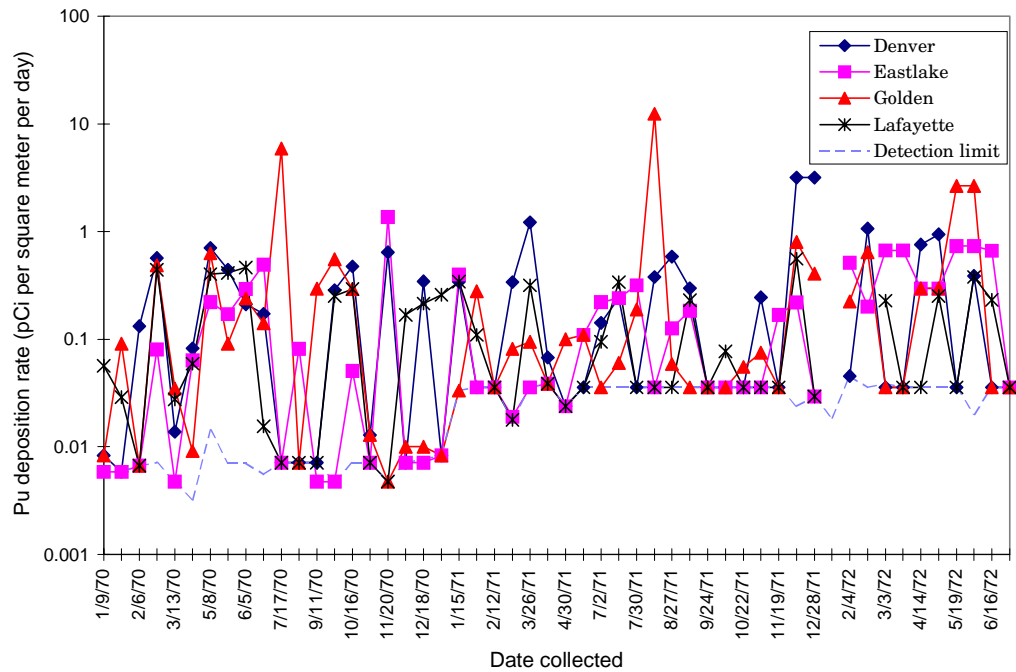


Figure C-11. Plutonium deposition rates measured using gummed paper at stations located in Denver, Eastlake, Golden, and Lafayette from 1970 through June 1972. No correction has been made for collection efficiency.

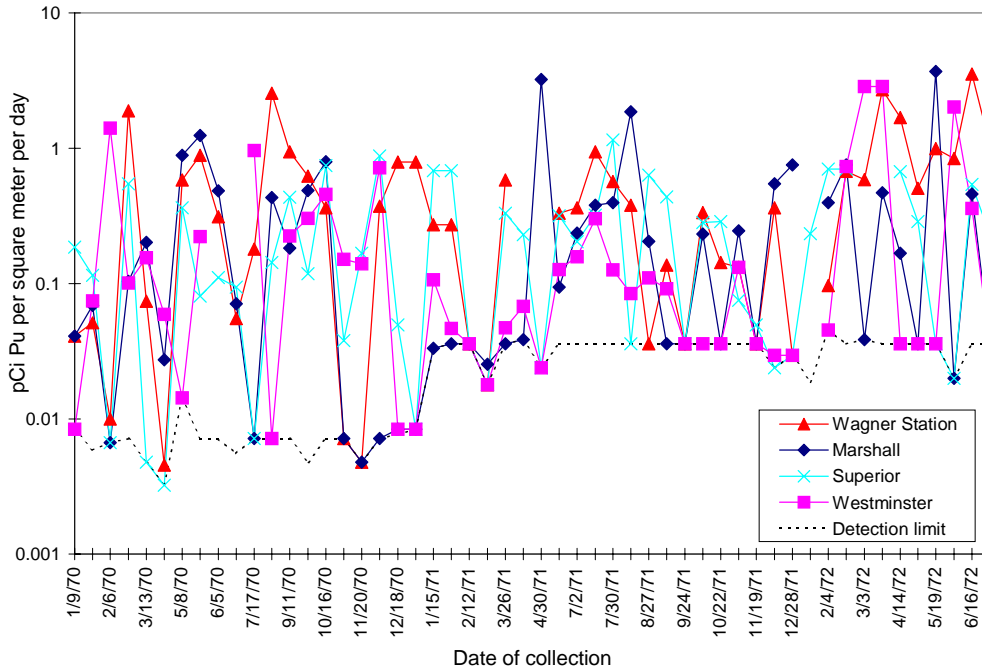


Figure C-12. Plutonium deposition rates measured using gummed paper at stations located in Marshall, Superior, Wagner Station and Westminster from 1970 through June 1972. No correction has been made for collection efficiency.

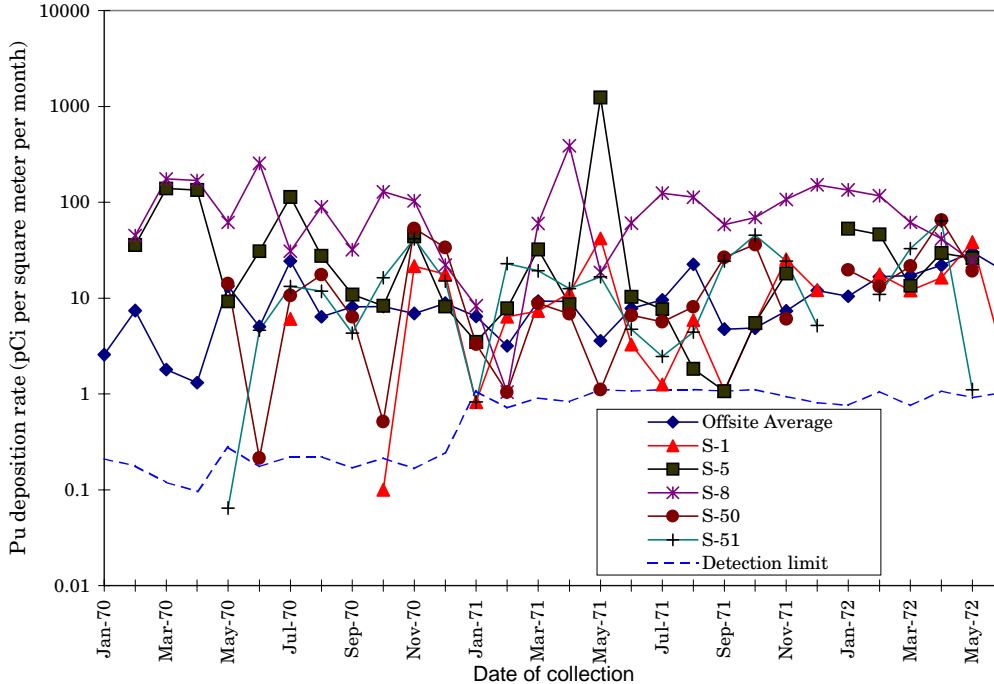


Figure C-13. Plutonium deposition rates measured using gummed paper at onsite air monitoring stations from 1970 through June 1972. No correction has been made for collection efficiency.