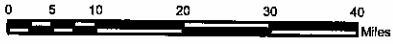
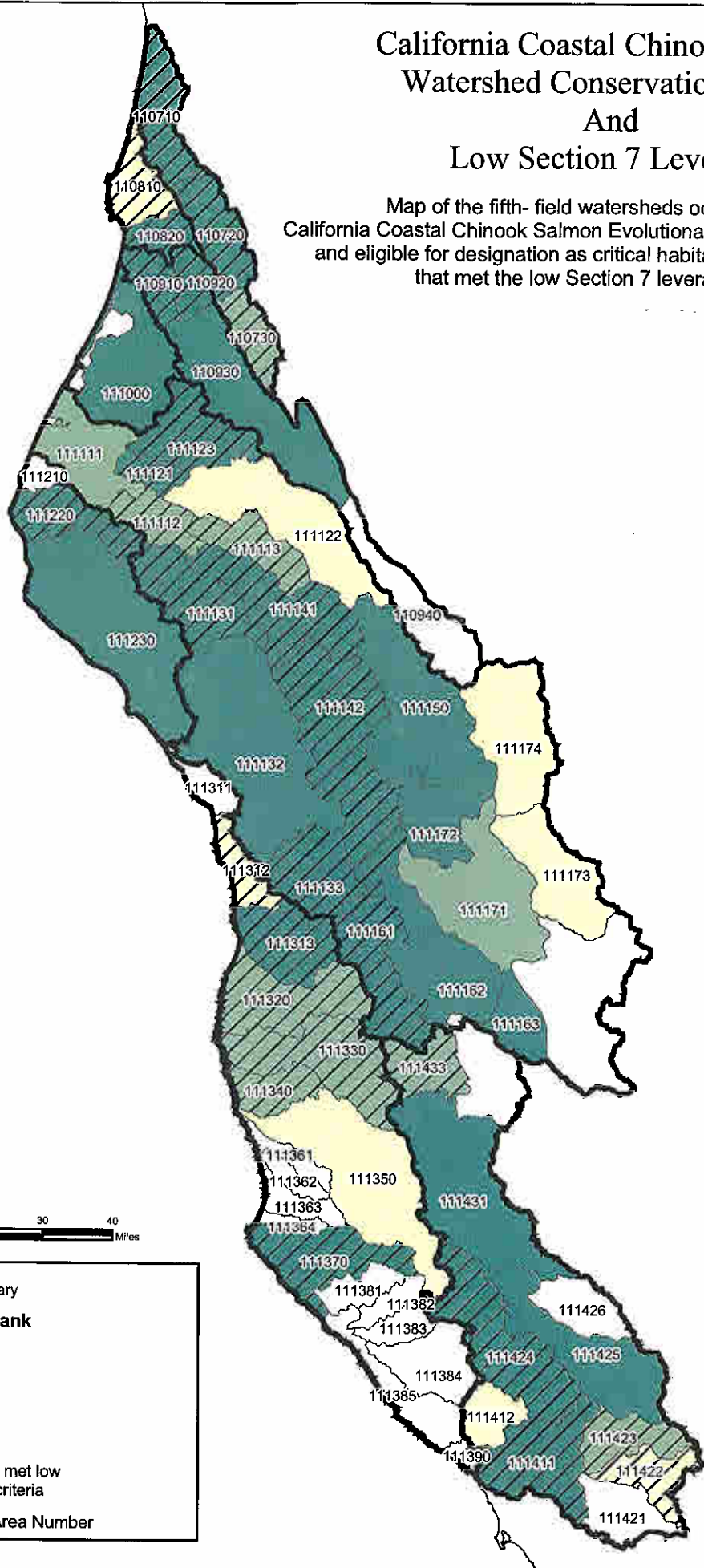


California Coastal Chinook Salmon Watershed Conservation Rating And Low Section 7 Leverage

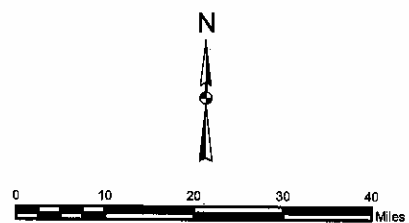
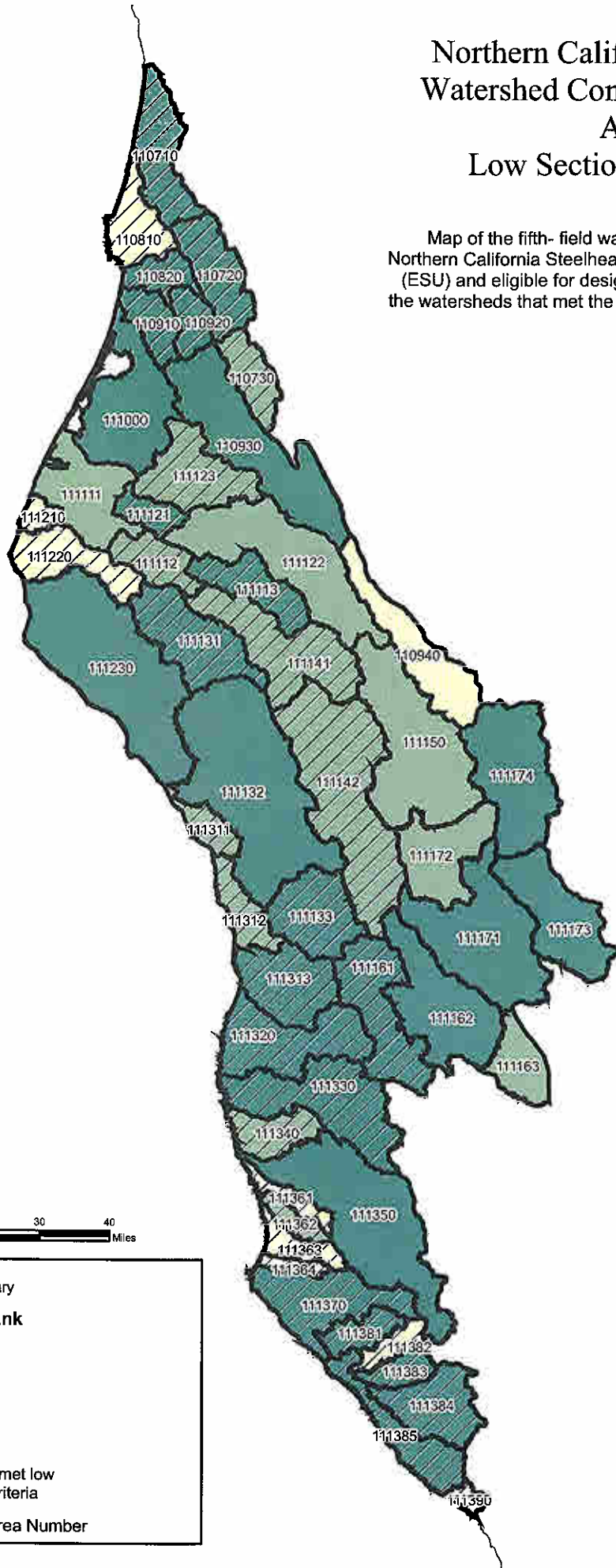
Map of the fifth- field watersheds occupied by the California Coastal Chinook Salmon Evolutionarily Significant Unit (ESU) and eligible for designation as critical habitat and the watersheds that met the low Section 7 leverage criteria.






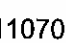


	Hydrologic Unit Boundary
Hydrologic Sub- Area Rank	
	High
	Medium
	Low
	Not Ranked
	Denotes area which met low Section 7 leverage criteria
110701 Hydrologic Sub-Area Number	

Northern California Steelhead Watershed Conservation Rating And Low Section 7 Leverage

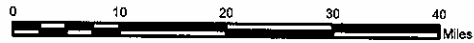
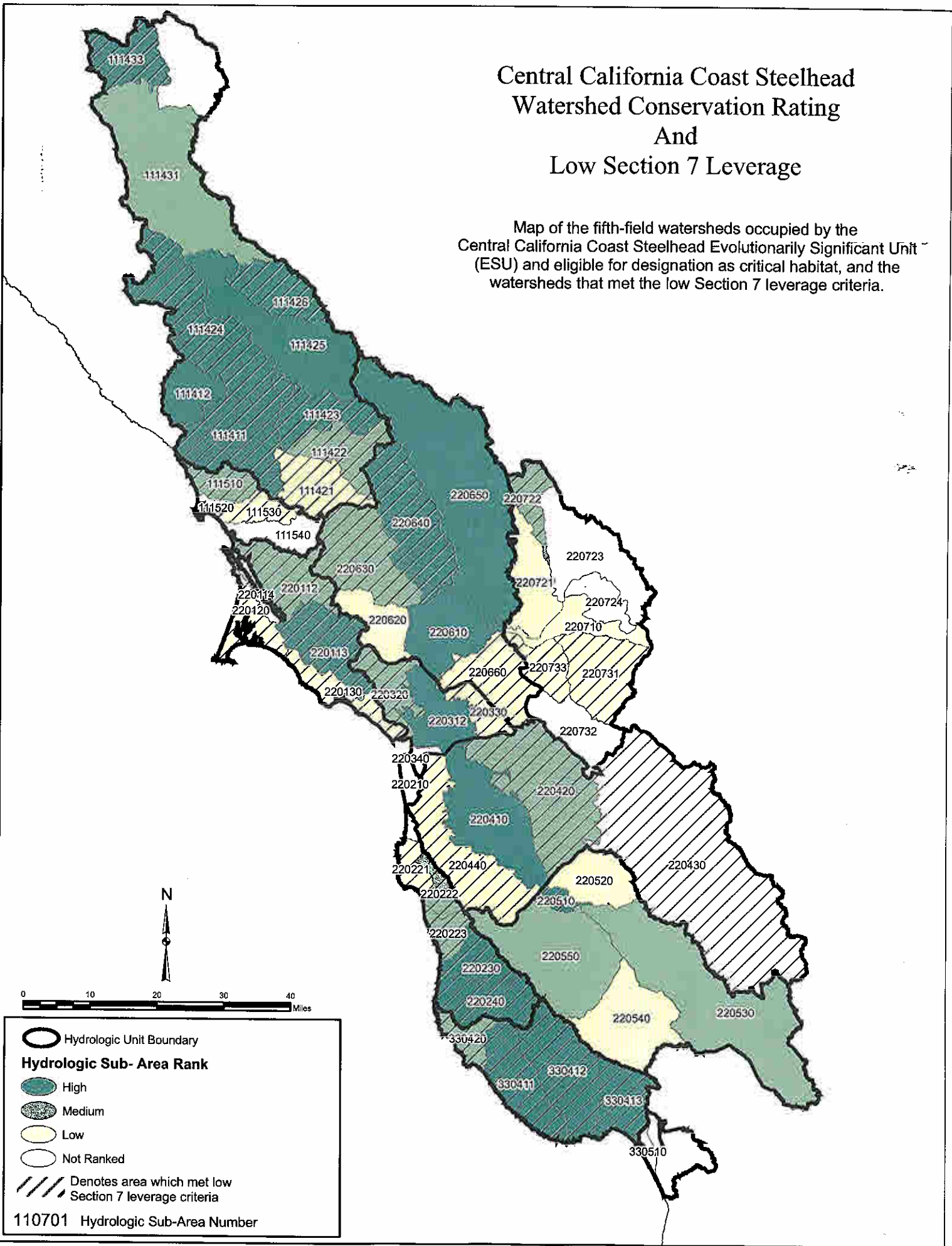
Map of the fifth- field watersheds occupied by the Northern California Steelhead Evolutionarily Significant Unit (ESU) and eligible for designation as critical habitat, and the watersheds that met the low Section 7 leverage criteria.



 Hydrologic Unit Boundary
Hydrologic Sub- Area Rank
 High
 Medium
 Low
 Not Ranked
 Denotes area which met low Section 7 leverage criteria
 110701 Hydrologic Sub-Area Number

Central California Coast Steelhead Watershed Conservation Rating And Low Section 7 Leverage

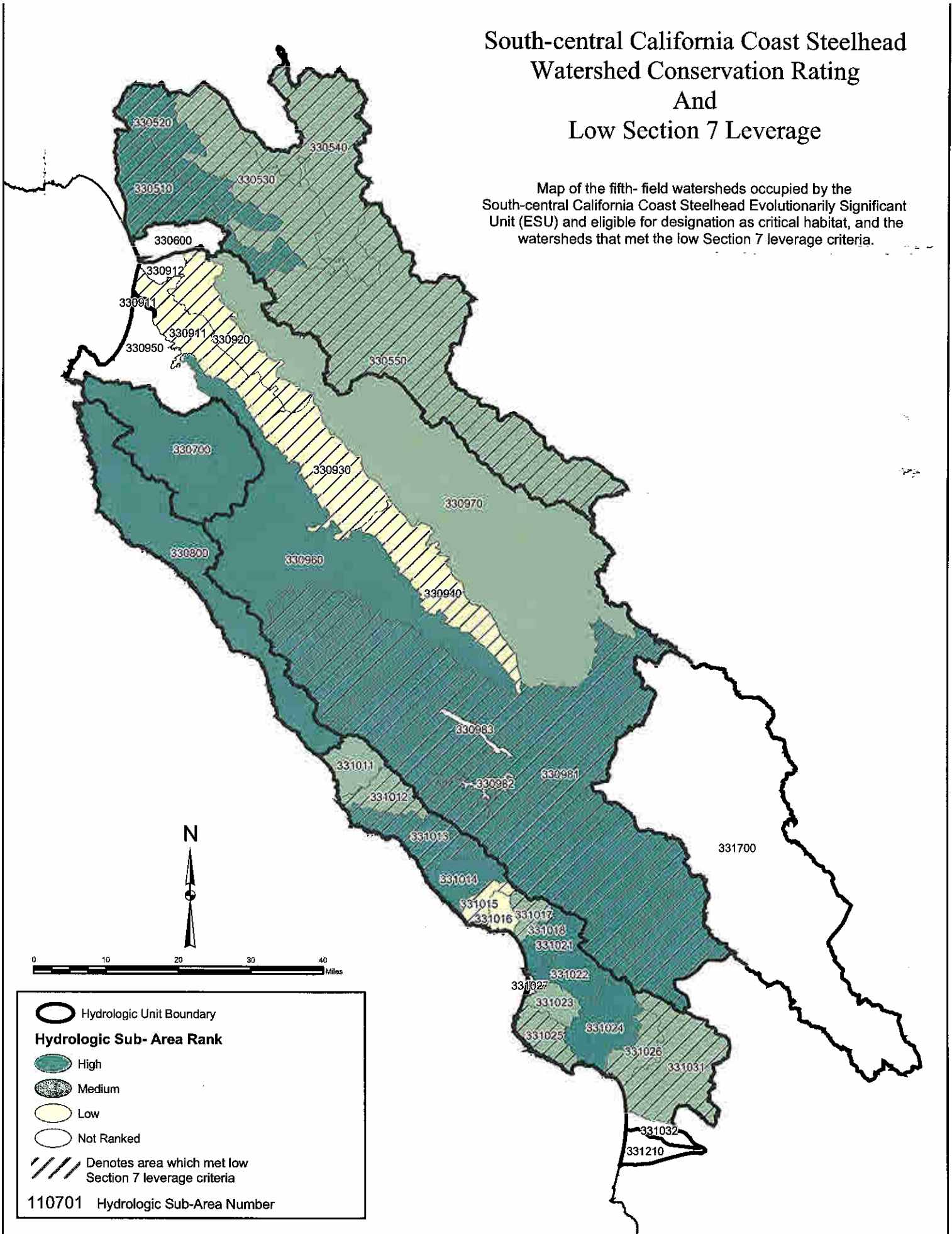
Map of the fifth-field watersheds occupied by the Central California Coast Steelhead Evolutionarily Significant Unit (ESU) and eligible for designation as critical habitat, and the watersheds that met the low Section 7 leverage criteria.



Hydrologic Unit Boundary
Hydrologic Sub- Area Rank
 High
 Medium
 Low
 Not Ranked
 Denotes area which met low Section 7 leverage criteria
 110701 Hydrologic Sub-Area Number

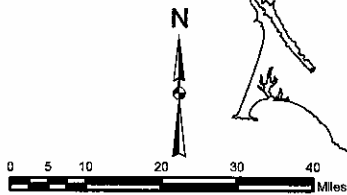
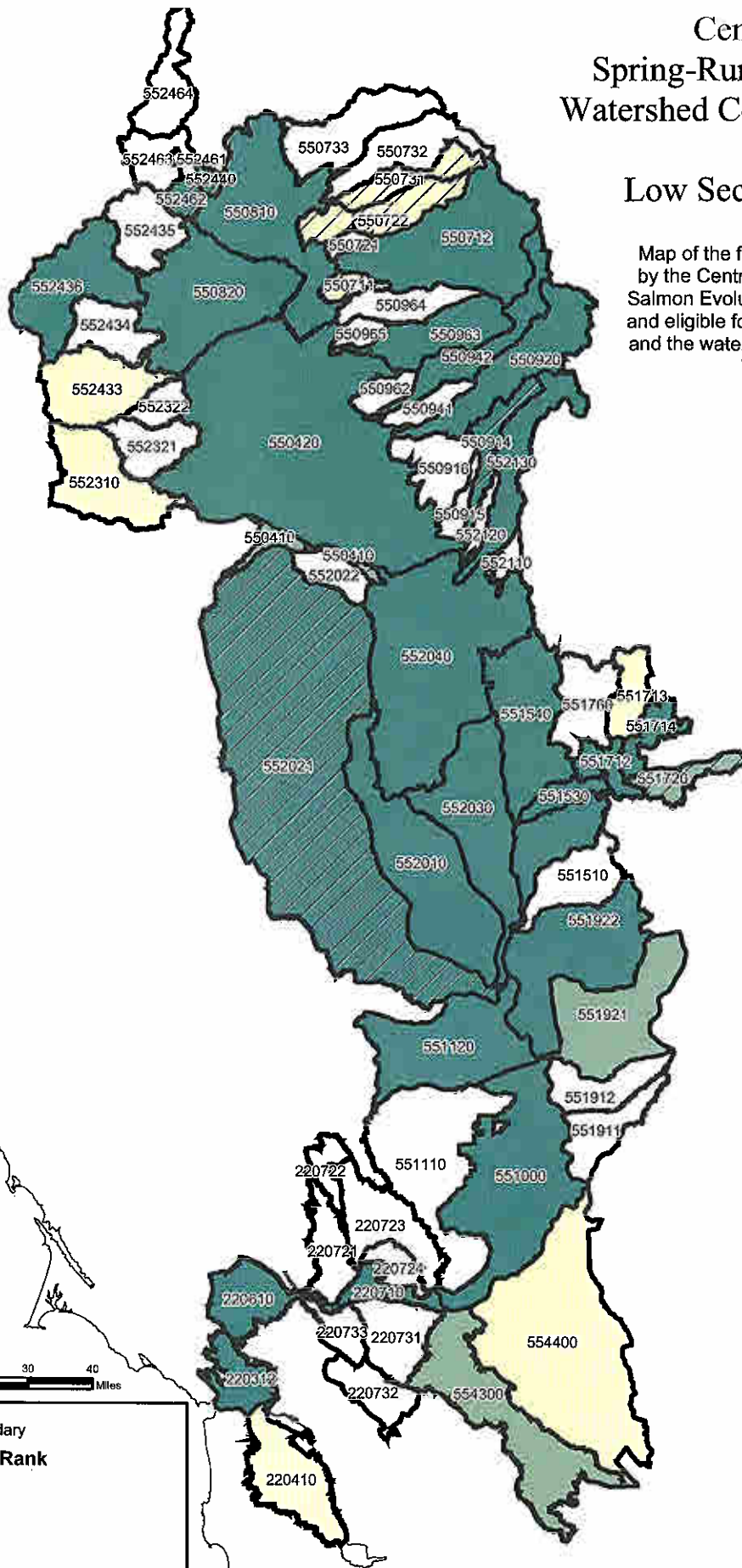
South-central California Coast Steelhead Watershed Conservation Rating And Low Section 7 Leverage

Map of the fifth- field watersheds occupied by the South-central California Coast Steelhead Evolutionarily Significant Unit (ESU) and eligible for designation as critical habitat, and the watersheds that met the low Section 7 leverage criteria.



Central Valley Spring-Run Chinook Salmon Watershed Conservation Ranking And Low Section 7 Leverage

Map of the fifth-field watersheds occupied by the Central Valley Spring-Run Chinook Salmon Evolutionarily Significant Unit (ESU) and eligible for designation as critical habitat, and the watersheds that met the low Section 7 leverage criteria.



Hydrologic Unit Boundary

Hydrologic Sub- Area Rank

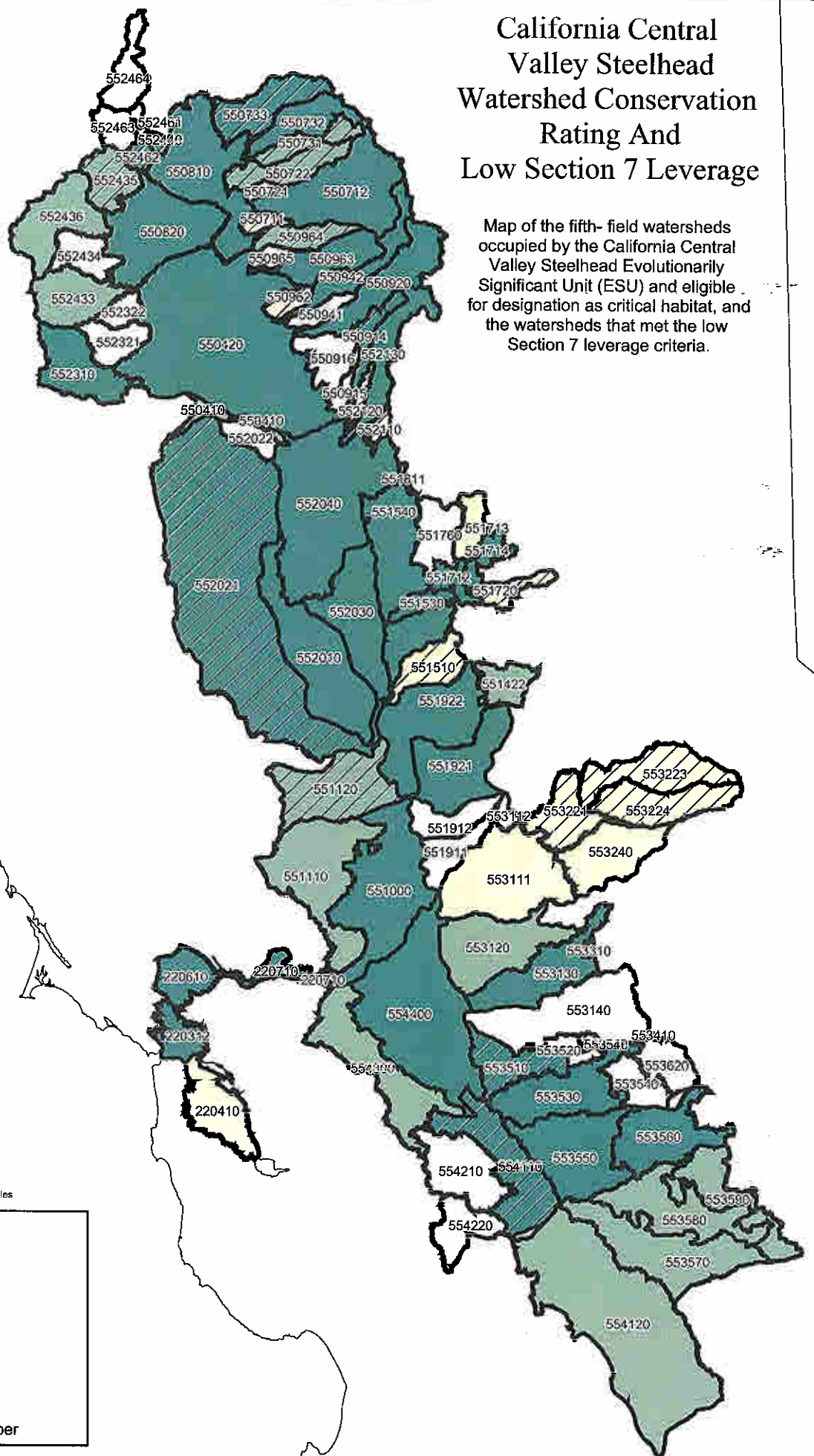
- High
- Medium
- Low
- Not Ranked

Denotes area which met low Section 7 leverage criteria

110701 Hydrologic Sub-Area Number

California Central Valley Steelhead Watershed Conservation Rating And Low Section 7 Leverage

Map of the fifth- field watersheds occupied by the California Central Valley Steelhead Evolutionarily Significant Unit (ESU) and eligible for designation as critical habitat, and the watersheds that met the low Section 7 leverage criteria.



○ Hydrologic Unit Boundary

Hydrologic Sub- Area Rank

- High
- Medium
- Low
- Not Ranked

/// Denotes area which met low Section 7 leverage criteria

110701 Hydrologic Sub-Area Number

Appendix B

Tables B1 - B7: Conservation Ratings, Economic Impacts, and Final Recommended Exclusions for occupied CALWATER HSA Watersheds for 7 ESUs of Salmon and Steelhead in California.

Table B1 - California Coastal Chinook ESU

Table B2 - Northern California Steelhead ESU

Table B3 - Central California Coast Steelhead ESU

Table B4 - South-Central California Coast Steelhead ESU

Table B5 - Southern California Steelhead ESU

Table B6 - Central Valley spring-run Chinook ESU

Table B7 - Central Valley Steelhead ESU

Table B1. Conservation Ratings, Benefits, Economic Impacts, and Final Exclusions for California Coastal Chinook ESU

CalWater Unit	Annualized Cost	Cons. Value	Low Leverage	Inclusion Benefit	Threshold Exceedance	CHART Recommendation	Exclusion Benefit
110810	\$11,030		Low	YES Very Low	No	No	
111122	\$560,665		Low	NO Low	Yes	Exclude - 12/04	560,665
111173	\$895,744		Low	NO Low	Yes	Exclude - 12/04	895,744
111174	\$540,971		Low	NO Low	Yes	Exclude - 12/04	540,971
111312	\$1,368		Low	YES Very Low	No	No	
111350	\$78,134		Low	NO Low	Yes	Exclude - final	78,134
111412	\$19,589		Low	NO Low	No	No	
111422	\$440,460		Low	YES Very Low	Yes	Exclude - 12/04	440,460
N = 8							
\$2,547,960							
110730	\$53,694		Medium	YES Low/Medium	No	No	
111111	\$117,008		Medium	NO Medium	No	No	
111112	\$11,963		Medium	YES Low/Medium	No	No	
111113	\$582		Medium	YES Low/Medium	No	No	
111171	\$831,414		Medium	NO Medium	Yes	Exclude - 12/04	831,414
111320	\$39,311		Medium	YES Low/Medium	No	No	
111330	\$18,643		Medium	YES Low/Medium	No	No	
111340	\$165		Medium	YES Low/Medium	No	No	
111423	\$312,198		Medium	YES Low/Medium	Yes	Exclude - final	
111433	\$127,799		Medium	YES Low/Medium	Yes	Do not Exclude (1)	312,198
N = 10							
\$1,512,778							
110710	\$4,384		High	YES Medium/High	No	No	
110720	\$17,553		High	YES Medium/High	No	No	
110820	\$0		High	YES Medium/High	No	No	
110910	\$64,871		High	YES Medium/High	No	No	
110920	\$1,360		High	YES Medium/High	No	No	
110930	\$387,520		High	NO High	No	No	
111000	\$231,836		High	NO High	No	No	
111121	\$7,608		High	YES Medium/High	No	No	
111123	\$2,572		High	YES Medium/High	No	No	
111131	\$8,581		High	YES Medium/High	No	No	
111132	\$271,899		High	NO High	No	No	
111133	\$83,090		High	YES Medium/High	No	No	
111141	\$120,986		High	YES Medium/High	No	No	
111142	\$94,128		High	YES Medium/High	No	No	
111150	\$757,932		High	NO High	No	No	

111161	\$158,554	High	YES Medium/High	No
111162	\$423,059	High	NO High	No
111172	\$56,558	High	NO High	No
111220	\$22,535	High	YES Medium/High	No
111230	\$591,226	High	NO High	No
111313	\$4	High	YES Medium/High	No
111370	\$54,855	High	YES Medium/High	No
111411	\$268,277	High	YES Medium/High	No
111424	\$619,287	High	YES Medium/High	Yes
111425	\$622,219	High	NO High	No
111431	\$727,953	High	NO High	No
BE_Eel River_Estua	\$0	High	YES Medium/High	No
BE_Humboldt_Bay	\$191,704	High	NO High	No
111163	\$1,142,050	High	NO High	No

Do not exclude (2)

N = 29 \$6,932,599

Total ESU Cost	\$10,993,337	
Total Exclusions	\$3,659,586	33%
Designation Cost	\$7,333,751	67%

- (1) CHART concluded that exclusion of 111143 would impede conservation of this ESU
- (2) CHART concluded that exclusion of 111424 would impede conservation of this ESU
- (3) Migratory corridor of 111171 is retained to provide connectivity to high value watershed 111172, but tributaries are excluded. Benefit of exclusion is therefore equal to costs associated with tributaries. Using Plummer approach, all watershed costs attributed to tris rather than migratory corridor, therefore, benefits of exclusion equal to total watershed costs.

Table B2. Conservation Ratings, Benefits, Economic Impacts and Final Exclusions for Northern California Steelhead

CallWater Unit	Annualized Cost	Cons. Value	Low Leverage	Inclusion Benefit	Threshold Ex-pedance	CHART Recommendation	Exclusion Benefit
110810	\$11,030		Low	YES Very Low	No	Exclude - 12/04	809,882
110940	\$809,882		Low	NO Low	Yes		
111210	\$0		Low	YES Very Low	No		
111220	\$22,535		Low	YES Very Low	No		
111361	\$20		Low	YES Very Low	No		
111363	\$1		Low	YES Very Low	No		
111364	\$12,116		Low	YES Very Low	No		
111382	\$0		Low	YES Very Low	No		
111390	\$0		Low	YES Very Low	No		
N = 9							\$13,932
110730	\$53,694		Medium	YES Low/Medium	No		
111111	\$118,119		Medium	NO Medium	No		
111112	\$11,963		Medium	YES Low/Medium	No		
111122	\$560,665		Medium	NO Medium	Yes	Do not Exclude (1)	
111123	\$2,572		Medium	YES Low/Medium	No		
111141	\$120,986		Medium	YES Low/Medium	Yes	Do not Exclude (2)	
111142	\$94,128		Medium	YES Low/Medium	Yes	Do not Exclude (3)	
111150	\$757,932		Medium	YES Low/Medium	Yes	Exclude - 12/04	757,932
111172	\$56,558		Medium	NO Medium	Yes		
111311	\$594		Medium	NO Medium	No		
111312	\$1,368		Medium	YES Low/Medium	No		
111340	\$16,448		Medium	YES Low/Medium	No		
111362	\$8		Medium	YES Low/Medium	No		
111163	\$1,142,050		Medium	YES Low/Medium	No		
N = 14							1,142,050
\$2,937,085							\$293,932
110710	\$4,384		High	YES Medium/High	No		
110720	\$17,553		High	YES Medium/High	No		
110820	\$0		High	YES Medium/High	No		
110910	\$64,671		High	YES Medium/High	No		
110920	\$1,360		High	YES Medium/High	No		
110930	\$387,520		High	NO High	No		
111000	\$231,836		High	NO High	No		
111113	\$582		High	YES Medium/High	No		
111121	\$8,240		High	YES Medium/High	No		
111131	\$8,581		High	YES Medium/High	No		

111132	\$271,899	High	NO High	No
111133	\$83,090	High	YES Medium/High	No
111161	\$158,554	High	YES Medium/High	No
111162	\$423,059	High	NO High	No
111171	\$832,205	High	NO High	No
111173	\$895,744	High	NO High	No
111174	\$540,971	High	NO High	No
111230	\$591,226	High	NO High	No
111313	\$4	High	YES Medium/High	No
111320	\$39,311	High	YES Medium/High	No
111330	\$18,643	High	YES Medium/High	No
111350	\$116,968	High	NO High	No
111370	\$60,634	High	YES Medium/High	No
111381	\$0	High	YES Medium/High	No
111383	\$0	High	YES Medium/High	No
111384	\$21,205	High	YES Medium/High	No
111385	\$10,623	High	YES Medium/High	No
BE_Eel River_Estua	\$0	High	YES Medium/High	No
BE_Humboldt_Bay	\$191,704	High	NO High	No

N = 29 \$4,980,764

Total ESU Cost	\$8,773,432
Total Exclusions	\$2,709,864
Designation Cost	\$6,063,568
	31%
	69%

- (1) 111122 - CHART concluded that exclusion of this watershed would impede conservation of the ESU - see draft 4b2 report
- (2) 111141 - CHART concluded that exclusion of this watershed would impede conservation of the ESU.
- (3) 111142 - CHART concluded that exclusion of this watershed would impede conservation of the ESU.

Table B3. Conservation Ratings, Benefits, Economic Impacts and Final Exclusions for Central California Coast Steelhead

CalWater Unit	Annualized Cost	Cons. Value	Low Leverage	Inclusion Benefit	Threshold Exceedance	CHART Recommendation	Exclusion Benefit
111421	\$207,140		Low	YES Very Low	Yes	Exclude - final	207,140
111530	\$1,829		Low	YES Very Low	No		
220120	\$0		Low	YES Very Low	No		
220130	\$63		Low	YES Very Low	No		
220221	\$13,129		Low	YES Very Low	No		
220330	\$119,736		Low	YES Very Low	Yes	Exclude - 12/04	119,736
220440	\$586,122		Low	YES Very Low	Yes	Exclude - 12/04	586,122
220540	\$865,182		Low	NO Low	Yes	Exclude - 12/04	865,182
220620	\$260,946		Low	NO Low	Yes	Exclude - 12/04	260,946
220660	\$180,954		Low	YES Very Low	Yes	Exclude - 12/04	180,954
220721	\$430,445		Low	NO Low	Yes	Exclude - 12/04	430,445
220731	\$307,426		Low	YES Very Low	Yes	Exclude - 12/04	307,426
220733	\$256,751		Low	YES Very Low	Yes	Exclude - 12/04	256,751
220710	\$388,429		Low	NO Low	Yes	Exclude - 12/04	388,429
N = 14							\$3,618,151
111422	\$457,181		Medium	YES Low/Medium	Yes	Exclude - 12/04	457,181
111431	\$884,456		Medium	NO Medium	Yes	Exclude - 12/04	884,456
111510	\$9		Medium	YES Low/Medium	Yes	Do not Exclude (1)	
220112	\$150,001		Medium	YES Low/Medium	Yes		
220222	\$55,525		Medium	YES Low/Medium	Yes		
220223	\$4		Medium	YES Low/Medium	Yes		
220320	\$89,668		Medium	YES Low/Medium	Yes	Do not exclude (2)	
220420	\$570,695		Medium	YES Low/Medium	Yes	Exclude - 12/04	570,695
220530	\$890,224		Medium	NO Medium	Yes	Do not exclude (3)	
220550	\$369,416		Medium	NO Medium	Yes	Do not exclude (4)	
220630	\$216,706		Medium	YES Low/Medium	Yes		
220722	\$144,536		Medium	YES Low/Medium	Yes	Exclude - final	144,536
330420	\$47,638		Medium	YES Low/Medium	No		
N = 13							\$3,876,057
111411	\$441,559		High	YES Medium/High	Yes	Do not Exclude (5)	
111412	\$19,589		High	NO High	No		
111423	\$705,333		High	YES Medium/High	Yes	Do not Exclude (6)	
111424	\$863,457		High	YES Medium/High	Yes	Do not Exclude (7)	
111425	\$1,106,071		High	NO High	No		
111426	\$28,579		High	YES Medium/High	No		

Table B4. Conservation Ratings, Benefits, Economic Impacts and Final Exclusions for South-Central Coast Steelhead

CalWater Unit	Annualized Cost	Cons. Value	Low Leverage	Inclusion Benefit	Threshold Exceeded	CHART Recommendation	Exclusion Benefit
330930	\$1,294,480		Low	YES Very Low	Yes	Exclude/mig coor (1)	\$0
330940	\$653,576		Low	YES Very Low	Yes	Exclude/mig coor (1)	\$0
331015	\$64,909		Low	YES Very Low	No		
331016	\$102,493		Low	NO Low	Yes	Do not exclude (12)	
330920	\$665,486		Low	YES Very Low	Yes	Do not Exclude (2)	
330911	\$2,628,603		Low	YES Very Low	Yes	Exclude/mig coor (1)	\$0
N = 6	\$5,409,547						\$0
330530	\$1,054,343		Medium	YES Low/Medium	Yes	Do not Exclude (3)	
330540	\$137,833		Medium	YES Low/Medium	Yes	Do not Exclude (4)	
330550	\$805,929		Medium	YES Low/Medium	Yes	Do not Exclude (5)	
331011	\$11,517		Medium	NO Medium	No		
331012	\$384		Medium	YES Low/Medium	No	Do not Exclude (6)	
331017	\$109,643		Medium	YES Low/Medium	Yes		
331023	\$137,092		Medium	NO Medium	No		
331025	\$21,216		Medium	YES Low/Medium	No		
331026	\$213,621		Medium	YES Low/Medium	Yes	Do not Exclude (7)	
331031	\$586,932		Medium	YES Low/Medium	Yes	Do not Exclude (8)	
330970	\$417,753		Medium	NO Medium	Yes	Do not Exclude (9)	
N = 11	\$3,496,265						\$0
330510	\$2,256,058		High	YES Medium/High	Yes	Do not Exclude (10)	
330520	\$134,985		High	YES Medium/High	No		
330700	\$542,891		High	NO High	No		
330800	\$329,861		High	NO High	No		
330960	\$448,443		High	NO High	No		
330981	\$2,880,519		High	YES Medium/High	Yes	Do not Exclude (11)	
331013	\$6,805		High	YES Medium/High	No		
331014	\$81,273		High	NO High	No		
331018	\$44,809		High	NO High	No		
331021	\$209,798		High	NO High	No		
331022	\$300,084		High	NO High	No		
331024	\$551,931		High	NO High	No		
331027	\$164,095		High	YES Medium/High	No		
N = 13	\$7,951,553						\$0

Total ESU Cost	\$16,857,365	
Total Exclusions	\$0	0%
Designation Cost	\$16,857,365	100%

- (1) 33990, 330940, 330911 - CHART concluded that only the migration corridor in these watershed needed to be maintained to provide connectivity to high conservation value watershed units upstream. Data were not available to calculate economic benefits of excluding any non-migratory corridor habitat, thus benefits of exclusion considered to be zero.
- (2) 330920 - CHART concluded that exclusion of this watershed unit would impede conservation of the ESU - see draft 4(b)2 report for proposed rule.
- (3) 330530 - CHART concluded that exclusion of this watershed unit would impede conservation of the ESU.
- (4) 330540 - CHART concluded that exclusion of this watershed unit would impede conservation on the ESU.
- (5) 330550 - CHART concluded that exclusion of this watershed unit would impede conservation of the ESU.
- (6) 331017 - CHART concluded that exclusion of this watershed unit would impede conservation of the ESU.
- (7) 331026 - CHART concluded that exclusion of this watershed unit would impede conservation of the ESU.
- (8) 331031 - CHART concluded that exclusion of this watershed unit would impede conservation of the ESU - see draft 4(b)2 report for proposed rule.
- (9) 330970 - CHART concluded that exclusion of this watershed unit would impede conservation of the ESU - see draft 4(b)2 report for proposed rule.
- (10) 330510 - CHART concluded that exclusion of this watershed unit would impede conservation of the ESU.
- (11) 330981 - CHART concluded that exclusion of this watershed unit would impede conservation of the ESU.
- (12) 331016 - CHART concluded that exclusion of this watershed unit would impede conservation of the ESU.

Table B5. Conservation Ratings, Benefits, Economic Impacts and Final Exclusions for the Southern California Steathead ESU

CalWater Unit	Annualized Cost	Cons. Value	Low Leverage	Inclusion Benefit	Threshold Exceedance	CHART Recommendation	Exclusion Benefit
331210	\$644,912		Low	NO Low	Yes	Part Ex- 12/04 (1)	\$56,000
331230	\$4,735,169		Low	NO Low	Yes	Excludes - 12/04	\$4,735,169
331430	\$211,738		Low	NO Low	Yes	Part Ex- 12/04 (2)	\$33,000
440811	\$862,968		Low	NO Low	Yes	Excludes - 12/04	\$862,968
440813	\$239		Low	YES Very Low	No		
N = 5							
\$6,355,026							
89%							
331440	\$580,901		Medium	YES Low/Medium	Yes	Do not exclude (3)	
331451	\$2,149,524		Medium	NO Medium	Yes	Excludes - 12/04	\$2,149,524
440231	\$32,982		Medium	YES Low/Medium	No		
440232	\$500,848		Medium	NO Medium	Yes	Do not exclude (4)	
440310	\$248,024		Medium	NO Medium	No		
490124	\$10,603		Medium	YES Low/Medium	No		
N = 6							
\$3,522,892							
61%							
331220	\$896,131		High	NO High	No		
331410	\$145,974		High	YES Medium/High	No		
331420	\$632,154		High	NO High	No		
331510	\$1,538,321		High	NO High	No		
331531	\$713,053		High	NO High	No		
331532	\$1,071,794		High	NO High	No		
331533	\$288,923		High	NO High	No		
331534	\$560,122		High	NO High	No		
440210	\$198,208		High	YES Medium/High	No		
440220	\$1,746,162		High	NO High	No		
440321	\$262,554		High	NO High	No		
440322	\$61,581		High	NO High	No		
440331	\$235,566		High	YES Medium/High	No		
440332	\$653,703		High	NO High	No		
440341	\$322,647		High	YES Medium/High	No		
440411	\$15,225		High	YES High	Yes	Do not exclude (5)	
440421	\$26,840		High	YES High	No		
440444	\$18		High	YES High	No		
490123	\$103,804		High	YES Medium/High	No		
490127	\$0		High	YES Medium/High	No		
490140	\$132,724		High	NO High	No		

N = 21 \$9,545,505

Total ESU Cost	\$19,423,413	
Total Exclusions	\$7,836,661	40%
Designation Cost	\$11,586,752	60%

- (1) 331210 - Exclude tributaries and retain migration corridor. Estimated benefit of excluding tribs is \$56,000 using Plummer approach.
- (2) 331430 - Exclude tributaries and retain migration corridor. Estimated benefit of excluding tribs is \$33,000 using Plummer approach.
- (3) 331440 - CHART concluded the exclusion of this watershed would impede conservation of the ESU.
- (4) 440232 - CHART concluded the exclusion of this watershed would impede conservation of the ESU.
- (5) 440341 - CHART concluded the exclusion of this watershed would impede conservation of the ESU.

Table B6. Conservation Ratings, Benefits, Economic Impacts and Final Exclusions for CV Spring Run Chinook

Call/Water Unit	Annualized Cost	Cons. Value	Low Leverage	Inclusion Benefit	Threshold Exceedance	CHART Recommendation	Exclusion Benefit
550711	\$35,318		Low	YES Very Low	No		
550722	\$18,203		Low	YES Very Low	No		1,076,493
552310	\$1,076,493		Low	NO Low	Yes	Exclude - 12/04	318,450
552433	\$318,450		Low	NO Low	Yes	Exclude - 12/04	3,899,127
554400	\$3,899,127		Low	NO Low	Yes	Exclude - 12/04	617,688
220410	\$617,688		Low	NO Low	Yes	Exclude - 12/04	416,142
551713	\$416,142		Low	NO Low	Yes	Exclude - 12/04	
N = 7	\$6,381,422						\$6,381,422
550410	\$99,464		Medium	YES Low/Medium	Yes	Do not Exclude (1)	
551720	\$257,367		Medium	YES Low/Medium	Yes	Exclude - final	257,367
554300	\$549,945		Medium	NO Medium	Yes	Exclude - 12/04	549,945
N = 3	\$906,775						\$906,775
550420	\$1,374,297		High	NO High	No		
550712	\$1,113,853		High	NO High	No		
550810	\$906,127		High	NO High	No		
550820	\$47,555		High	NO High	No		
550914	\$72,532		High	YES Medium/High	No		
550920	\$856,552		High	NO High	No		
550942	\$378,547		High	NO High	No		
550963	\$449,479		High	NO High	No		
551000	\$1,928,152		High	NO High	No		
551510	\$78,094		High	YES Medium/High	No		\$21,000
551530	\$67,186		High	NO High	No		
551540	\$5,570,239		High	NO High	No		
551712	\$16,573		High	NO High	No		
551921	\$1,160,292		High	NO High	No		
551922	\$1,002,486		High	NO High	No		
552010	\$673,978		High	NO High	No		
552021	\$8,269		High	YES Medium/High	No		
552030	\$403,580		High	NO High	No		
552040	\$785,561		High	NO High	No		
552130	\$914,748		High	NO High	No		
552436	\$706,157		High	NO High	No		
552440	\$14,027		High	YES Medium/High	No		
552462	\$20,977		High	YES Medium/High	No		

220312	\$507,863	High	NO High	No
220610	\$122,250	High	NO High	No
220710	\$388,429	High	NO High	No
551714	\$2,367,188	High	NO High	No

\$21,902,956

N = 27

Total ESU Cost	\$29,223,186	
Total Exclusions	\$7,156,212	25%
Designation Cost	\$22,066,974	75%

(1) 550410 - CHART concluded that exclusion of this watershed unit would impede conservation of the ESU
 (2) 551000 - CHART concluded it was appropriate to exclude Deep Water Ship Channel from this watershed unit. Only \$21,000 can be attributed as benefit of exclusion. See preliminary 4(b)2 report.

Table B7. Conservation Ratings, Benefits, Economic Impacts and Final Exclusions for CV Steelhead ESU

CalWater Unit	Annualized Cost	Cons. Value	Low Leverage	Inclusion Benefit	Threshold Exceedance	CHART Recommendation	Exclusion Benefit
550711	\$35,318		Low	YES Very Low	No		
550721	\$0		Low	YES Very Low	No		
550962	\$13,936		Low	YES Very Low	No		
551720	\$257,367		Low	YES Very Low	Yes	Exclude - 12/03	257,367
552120	\$18,163		Low	YES Very Low	No		
553111	\$897,379		Low	NO Low	Yes	Exclude - 12/04	897,379
553240	\$213,384		Low	NO Low	Yes	Exclude - 12/04	213,384
220410	\$617,688		Low	NO Low	Yes	Exclude - 12/04	617,688
551713	\$416,142		Low	NO Low	Yes	Exclude - 12/04	416,142
553221	\$106,025		Low	YES Very Low	Yes	Exclude - 12/04	106,025
553223	\$233,255		Low	YES Very Low	Yes	Exclude - 12/04	233,255
553224	\$57,288		Low	YES Very Low	No	Exclude - 12/04	57,288
N = 12 \$2,865,945							
550410	\$107,995		Medium	YES Low/Medium	Yes	Do not exclude (1)	
550722	\$18,203		Medium	YES Low/Medium	No		
550731	\$2,191		Medium	YES Low/Medium	No		
550964	\$98,451		Medium	YES Low/Medium	Yes	Exclude - final Exclude - 12/04	98,451
551110	\$256,771		Medium	NO Medium	No		256,771
551120	\$37,366		Medium	YES Low/Medium	No		
551510	\$110,127		Medium	YES Low/Medium	Yes	Do not exclude (2)	
552110	\$5,029		Medium	YES Low/Medium	No	Do not exclude (3)	
552433	\$318,450		Medium	NO Medium	Yes	Do not exclude (4)	
552435	\$121,260		Medium	YES Low/Medium	Yes	Exclude - final	121,260
552436	\$706,157		Medium	NO Medium	Yes	Do not exclude (5)	
553120	\$867,586		Medium	NO Medium	Yes	Part Exclusion (6)	0
553570	\$218,271		Medium	NO Medium	No		
553580	\$444,613		Medium	NO Medium	Yes	Do not exclude (11)	
553590	\$346,474		Medium	NO Medium	Yes	Do not exclude (7)	
554120	\$132,985		Medium	NO Medium	No		
554300	\$549,945		Medium	NO Medium	Yes	Exclude - 12/03	549,945
551422	\$604,093		Medium	NO Medium	Yes	Do not exclude (8)	
N = 18 \$4,945,966							
550420	\$1,078,276		High	NO High	No		
550712	\$1,113,853		High	NO High			
550732	\$75,023		High	NO High			
550733	\$76,314		High	YES Medium/High			
550810	\$901,685		High	NO High			
550820	\$47,764		High	NO High			

ESU ID	Cost	High	Medium/High	Yes	Exclusion
550914	\$72,532	High	YES Medium/High		
550920	\$856,552	High	NO High		
550942	\$378,547	High	NO High		
550963	\$449,479	High	NO High		
551000	\$1,953,638	High	NO High		
551530	\$67,549	High	NO High		
551540	\$5,573,647	High	NO High		
551712	\$16,573	High	NO High		
551921	\$1,160,288	High	NO High		
551922	\$1,203,339	High	NO High		
552010	\$683,425	High	NO High		
552021	\$8,309	High	YES Medium/High		
552030	\$406,816	High	NO High		
552040	\$1,101,867	High	NO High		
552130	\$914,748	High	NO High		
552310	\$1,076,493	High	NO High		
552440	\$14,027	High	YES Medium/High		
552462	\$20,977	High	YES Medium/High		
553130	\$952,081	High	NO High		
553310	\$0	High	YES Medium/High		
553410	\$0	High	YES Medium/High		
553510	\$235,149	High	YES Medium/High		
553530	\$676,179	High	YES Medium/High		
553550	\$737,021	High	NO High		
553560	\$209,461	High	NO High		
554110	\$356,833	High	YES Medium/High		
554400	\$4,619,124	High	NO High		
220312	\$507,863	High	NO High		
220610	\$122,250	High	NO High		
220710	\$388,452	High	NO High		
551714	\$2,367,188	High	NO High		
N = 37					21,000

Total ESU Cost	\$38,235,233	
Total Exclusions	\$3,845,955	10%
Designation Cost	\$34,389,278	90%

- (1) 550410 - CHART concluded that exclusion of this watershed unit would impede conservation of the ESU.
- (2) 551510 - CHART concluded that exclusion of this watershed unit would impede conservation of the ESU. Proposed for exclusion - 12/04.
- (3) 552110 - CHART concluded that exclusion of this watershed unit would impede conservation of the ESU. Proposed for exclusion - 12/04.
- (4) 552433 - CHART concluded that exclusion of this watershed unit would impede conservation of the ESU - see preliminary 4(b)2 report.
- (5) 552436 - CHART concluded that exclusion of this watershed unit would impede conservation of the ESU - see preliminary 4(b)2 report.
- (6) 553120 - CHART concluded that customized/partial exclusion of Mosher Creek would not impede conservation of the ESU. It was not possible to attribute economic costs to Mosher Creek, thus no economic benefits of exclusion.
- (7) 553590 - CHART concluded that exclusion of this watershed unit would impede conservation of the ESU - see preliminary 4(b)2 report.
- (8) 551422 - CHART concluded that exclusion of this watershed unit would impede conservation of the ESU - see preliminary 4(b)2 report.
- (9) 551000 - CHART concluded that customized/partial exclusion of Deep Water Ship Channel would not impede conservation of the ESU. Economic

benefits of exclusion estimated to be \$21,000 - see preliminary 4(b)2 report
(10) 554110 - CHART concluded that exclusion of this watershed unit would impede conservation of the ESU.
(11) 553580 - CHART concluded that exclusion of this watershed unit would impede conservation of the ESU.

Appendix C -

Maps C1-C7: Maps Illustrating Final Recommended HSA Watershed Economic Exclusions for 7 ESUs of Salmon and Steelhead in California.

Map C1 - California Coastal Chinook ESU

Map C2 - Northern California Steelhead ESU

Map C3 - Central California Coast Steelhead ESU

Map C4 - South-Central California Coast Steelhead ESU

Map C5 - Southern California Steelhead ESU

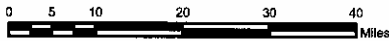
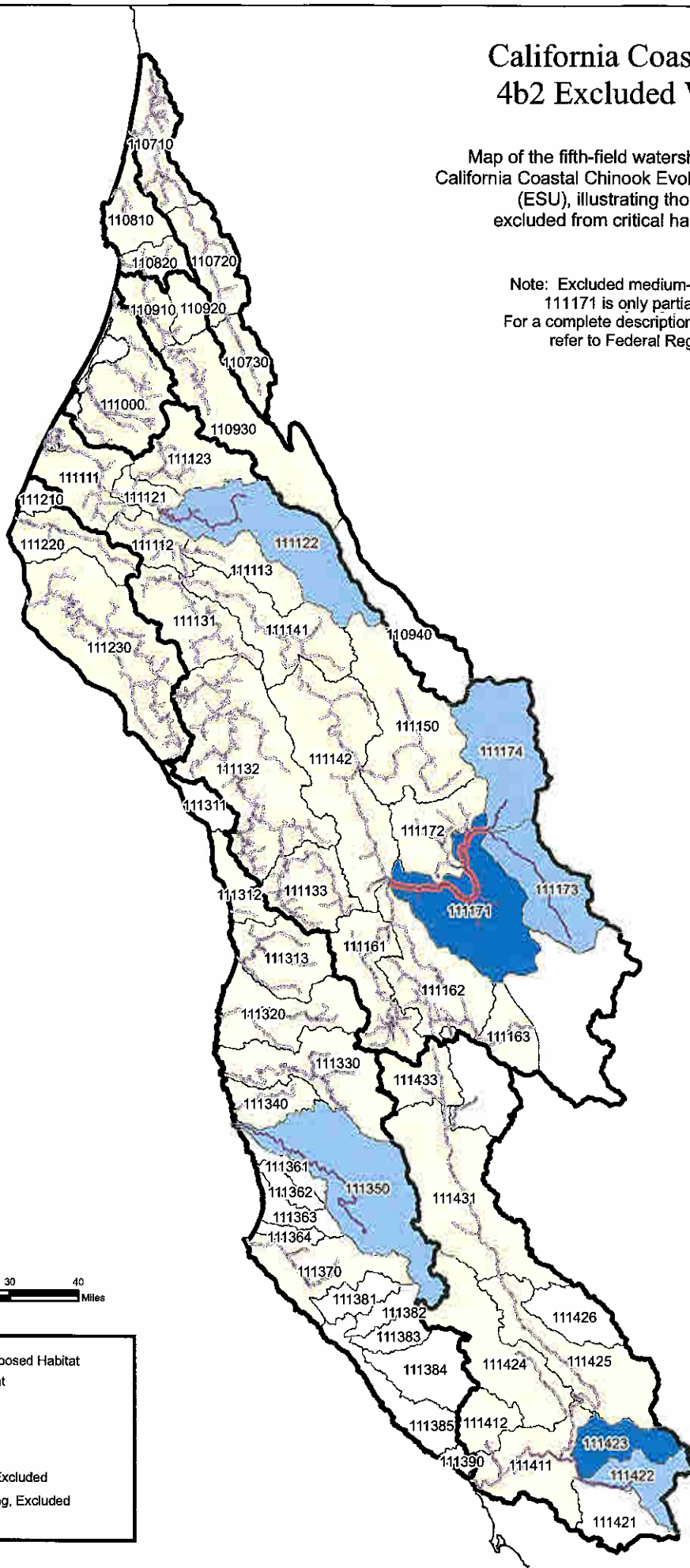
Map C6 - Central Valley spring-run Chinook ESU

Map C7 - Central Valley Steelhead ESU

California Coastal Chinook 4b2 Excluded Watersheds

Map of the fifth-field watersheds occupied by the California Coastal Chinook Evolutionarily Significant Unit (ESU), illustrating those areas being excluded from critical habitat designation.

Note: Excluded medium-ranked watershed 111171 is only partially excluded. For a complete description of excluded areas refer to Federal Register Notice.

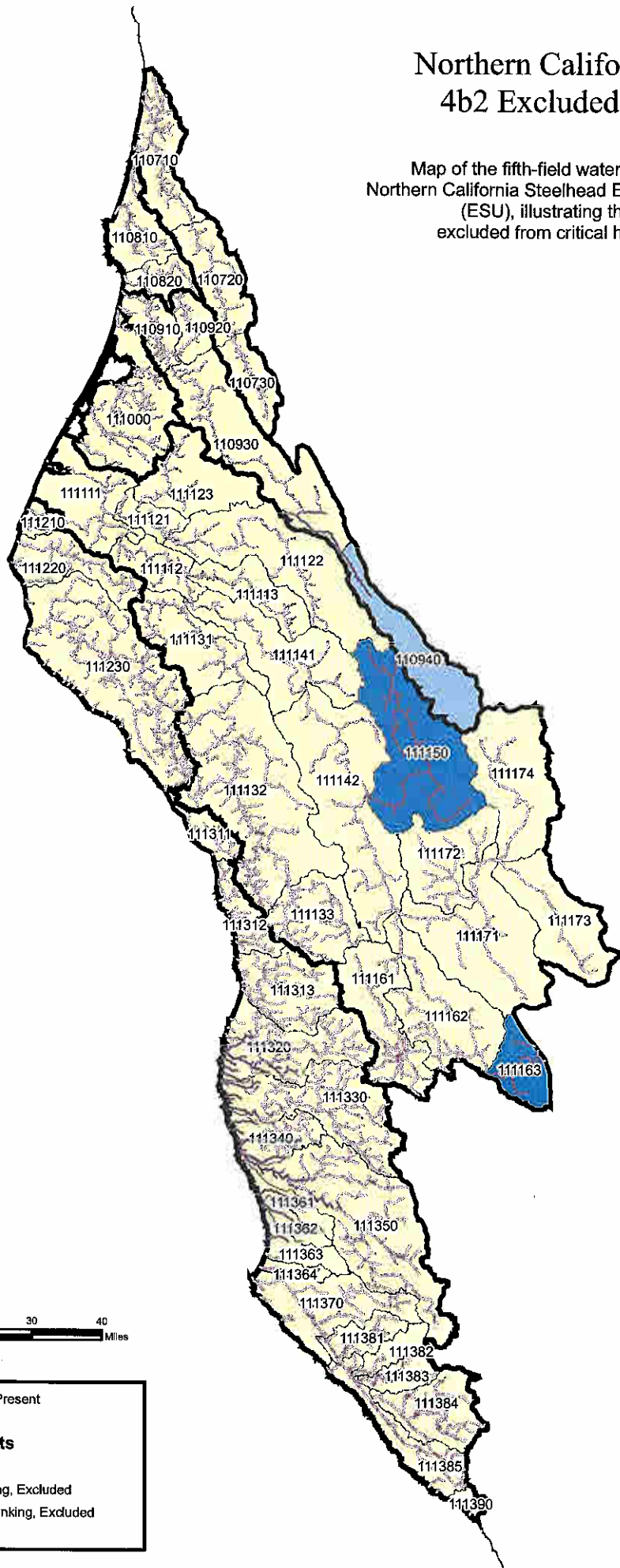


5th Field Calwater Units

- Migration Corridor and/or Proposed Habitat
- Streams with Chinook Present
- Hydrologic Unit Boundary
- Areas Not Excluded
- Low Conservation Ranking, Excluded
- Medium Conservation Ranking, Excluded
- Areas Not Ranked

Northern California Steelhead 4b2 Excluded Watersheds

Map of the fifth-field watersheds occupied by the Northern California Steelhead Evolutionarily Significant Unit (ESU), illustrating those areas being excluded from critical habitat designation.



Streams with Steelhead Present

Hydrologic Unit Boundary

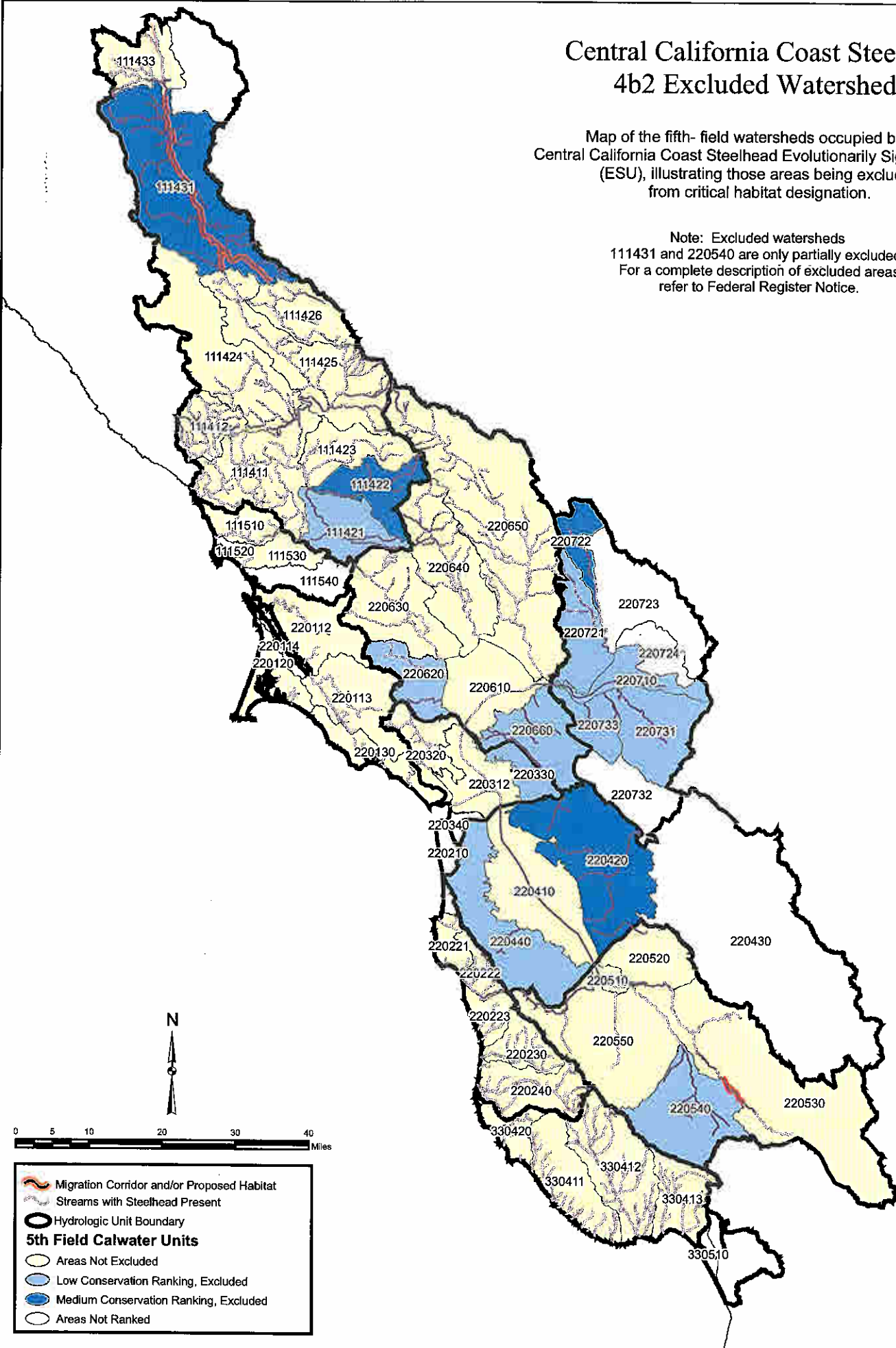
5th Field Calwater Units

- Areas Not Excluded
- Low Conservation Ranking, Excluded
- Medium Conservation Ranking, Excluded
- Areas Not Ranked

Central California Coast Steelhead 4b2 Excluded Watersheds

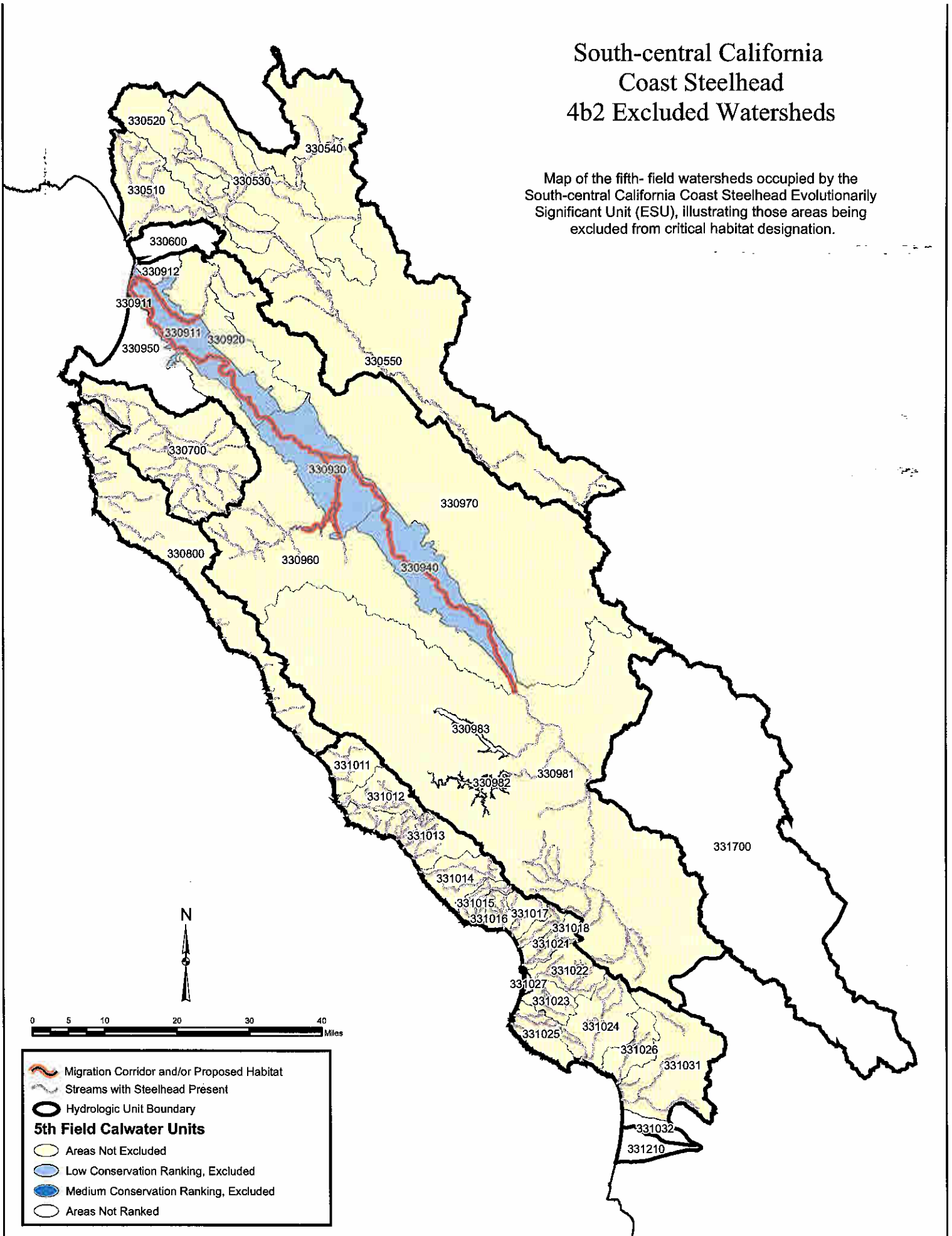
Map of the fifth- field watersheds occupied by the Central California Coast Steelhead Evolutionarily Significant Unit (ESU), illustrating those areas being excluded from critical habitat designation.

Note: Excluded watersheds 111431 and 220540 are only partially excluded. For a complete description of excluded areas refer to Federal Register Notice.



South-central California Coast Steelhead 4b2 Excluded Watersheds

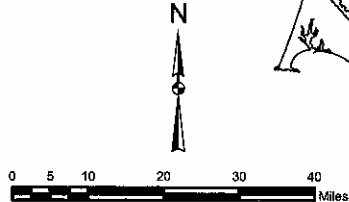
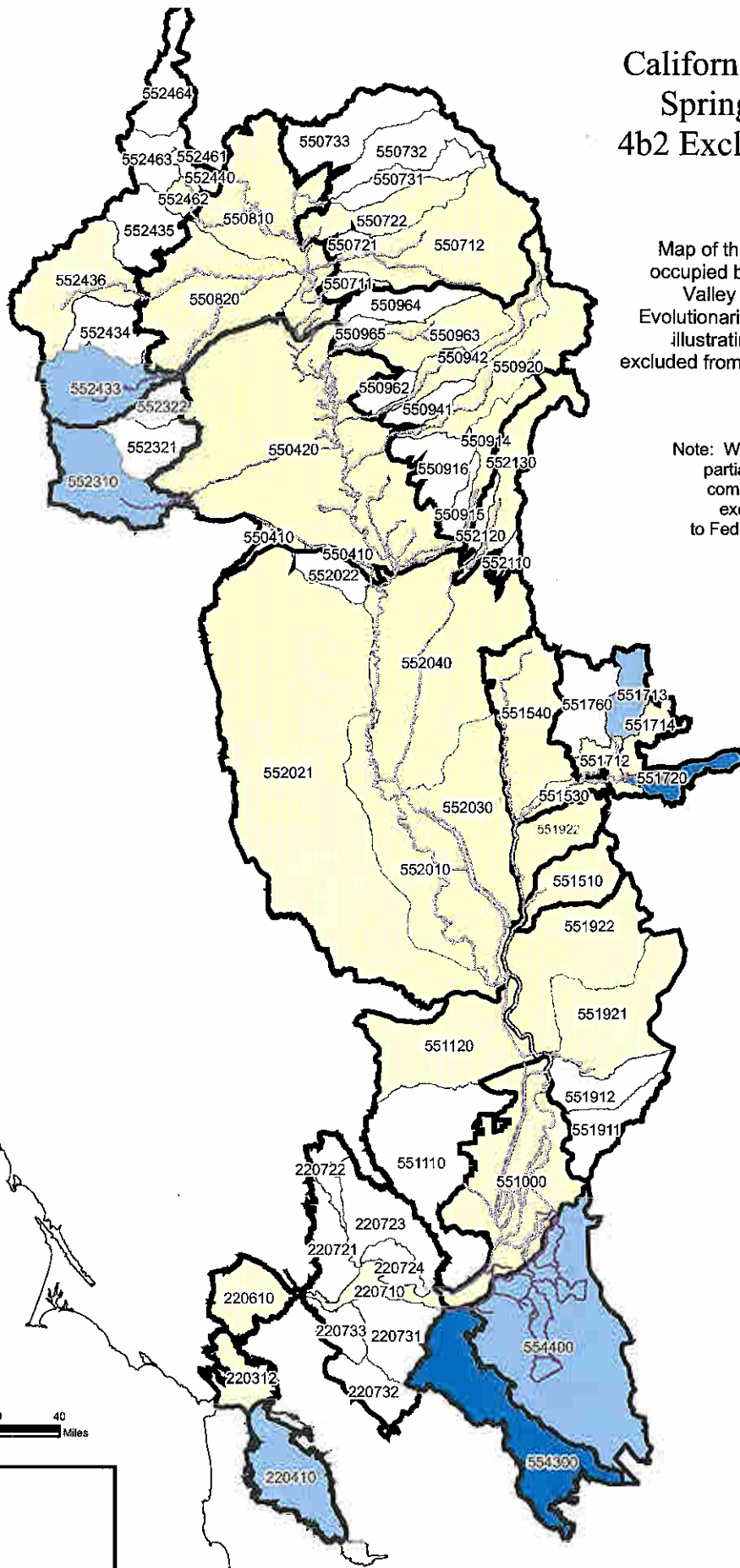
Map of the fifth- field watersheds occupied by the South-central California Coast Steelhead Evolutionarily Significant Unit (ESU), illustrating those areas being excluded from critical habitat designation.



California Central Valley Spring-run Chinook 4b2 Excluded Watersheds

Map of the fifth-field watersheds occupied by the California Central Valley Spring-run Chinook Evolutionarily Significant Unit (ESU), illustrating those areas being excluded from critical habitat designation.

Note: Watershed 551000 is only partially excluded. For a complete description of excluded areas refer to Federal Register Notice.

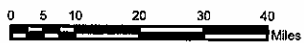
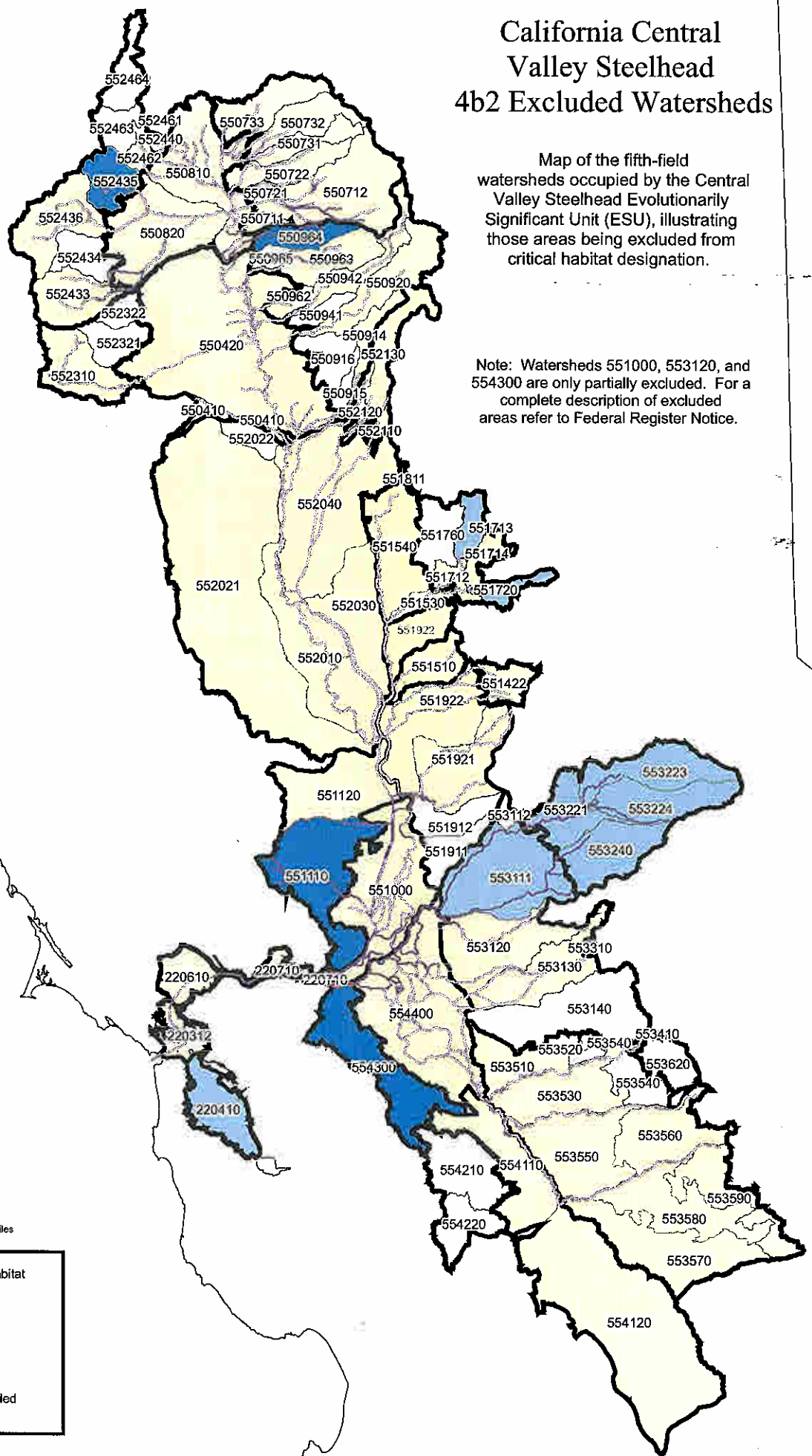









	Streams with Chinook Present
	Hydrologic Unit Boundary
5th Field Calwater Units	
	Areas Not Excluded
	Low Conservation Ranking, Excluded
	Medium Conservation Ranking, Excluded
	Areas Not Ranked

California Central Valley Steelhead 4b2 Excluded Watersheds

Map of the fifth-field watersheds occupied by the Central Valley Steelhead Evolutionarily Significant Unit (ESU), illustrating those areas being excluded from critical habitat designation.

Note: Watersheds 551000, 553120, and 554300 are only partially excluded. For a complete description of excluded areas refer to Federal Register Notice.



 Migration Corridor and/or Proposed Habitat
 Streams with Steelhead Present
 Hydrologic Unit Boundary
5th Field Calwater Units
 Areas Not Excluded
 Low Conservation Ranking, Excluded
 Medium Conservation Ranking, Excluded
 Areas Not Ranked