

Table XIV-1
LIVER AND INTRAHEPATIC BILE DUCT CANCER (Invasive)

TRENDS IN SEER INCIDENCE^a AND U.S. MORTALITY^b USING THE JOINTPOINT REGRESSION PROGRAM, 1975-2005
WITH UP TO THREE JOINTPOINTS BY RACE AND SEX

		Jointpoint Trend 1		Jointpoint Trend 2		Jointpoint Trend 3		Jointpoint Trend 4		AAPC ^c	
		Years	APC	Years	APC	Years	APC	Years	APC	1996-2005	2001-2005
<u>SEER Cancer Incidence^a</u>											
All Races	Both Sexes	1975-1984	1.3	1984-1997	4.7*	1997-2005	2.1*			2.4*	2.1*
All Races	Male	1975-1986	2.1*	1986-1996	4.9*	1996-2005	2.4*			2.4*	2.4*
All Races	Female	1975-1983	0.5	1983-1998	4.3*	1998-2005	0.7			1.5*	0.7
White	Both Sexes	1975-1987	1.6*	1987-1997	5.3*	1997-2005	1.8*			2.2*	1.8*
White	Male	1975-1987	1.8*	1987-1996	5.5*	1996-2005	2.2*			2.2*	2.2*
White	Female	1975-1985	0.8	1985-1999	4.0*	1999-2005	-0.8			0.8	-0.8
Black	Both Sexes	1975-2005	3.0*							3.0*	3.0*
Black	Male	1975-2005	3.2*							3.2*	3.2*
Black	Female	1975-2005	2.5*							2.5*	2.5*
<u>SEER Delay-Adjusted Incidence^a</u>											
All Races	Both Sexes	1975-1984	1.3	1984-1997	4.7*	1997-2005	2.5*			2.8*	2.5*
All Races	Male	1975-2005	3.6*							3.6*	3.6*
All Races	Female	1975-1983	0.4	1983-1997	4.4*	1997-2005	1.4			1.8*	1.4*
White	Both Sexes	1975-1987	1.6*	1987-1997	5.3*	1997-2005	2.2*			2.5*	2.2*
White	Male	1975-1987	1.8*	1987-1996	5.5*	1996-2005	2.6*			2.6*	2.6*
White	Female	1975-1985	0.8	1985-1999	4.0*	1999-2005	-0.3			1.1	-0.3
Black	Both Sexes	1975-2005	3.1*							3.1*	3.1*
Black	Male	1975-2005	3.3*							3.3*	3.3*
Black	Female	1975-2005	2.5*							2.5*	2.5*
<u>U.S. Cancer Mortality^b</u>											
All Races	Both Sexes	1975-1986	1.2*	1986-1996	3.8*	1996-2000	0.7	2000-2005	2.7*	1.8*	2.7*
All Races	Male	1975-1985	1.5*	1985-1996	3.8*	1996-1999	0.5	1999-2005	2.6*	1.9*	2.6*
All Races	Female	1975-1986	0.7*	1986-1995	3.5*	1995-2005	1.0*			1.0*	1.0*
White	Both Sexes	1975-1984	0.6*	1984-1996	3.6*	1996-2000	0.9	2000-2005	2.7*	1.9*	2.7*
White	Male	1975-1985	1.4*	1985-1996	3.9*	1996-1999	0.6	1999-2005	2.6*	1.9*	2.6*
White	Female	1975-1987	0.6*	1987-1996	3.6*	1996-2000	-0.6	2000-2005	2.0*	0.8	2.0*
Black	Both Sexes	1975-1988	0.8*	1988-1995	3.1*	1995-2001	0.5	2001-2005	3.5*	1.8*	3.5*
Black	Male	1975-2005	1.8*							1.8*	1.8*
Black	Female	1975-2005	1.6*							1.6*	1.6*

Jointpoint Regression Program Version 3.3.1, April 2008, National Cancer Institute. (<http://srab.cancer.gov/jointpoint/>).
The APC is the Annual Percent Change based on rates age-adjusted to the 2000 US Std Population (19 age groups - Census P25-1130).
Trends are from the SEER 9 areas (San Francisco, Connecticut, Detroit, Hawaii, Iowa, New Mexico, Seattle, Utah, and Atlanta).
Trends are from US Mortality Files, National Center for Health Statistics, Centers for Disease Control and Prevention.
The AAPC is the Average Annual Percent Change and is based on the APCs calculated by Jointpoint over the time range of 1975-2005.
The APC/AAPC is significantly different from zero ($p < .05$).

a
b
c
*

Table XIV-1a
LIVER AND INTRAHEPATIC BILE DUCT CANCER (Invasive)

TRENDS IN SEER INCIDENCE^a AND U.S. MORTALITY^b USING THE JOINTPOINT REGRESSION PROGRAM, 1975-2005
WITH UP TO FOUR JOINTPOINTS BY RACE AND SEX

		Jointpoint Trend 1		Jointpoint Trend 2		Jointpoint Trend 3		Jointpoint Trend 4		Jointpoint Trend 5		AAPC ^c
		Years	APC	Years	APC	Years	APC	Years	APC	Years	APC	2001-2005
<u>SEER Cancer Incidence^a</u>												
All Races	Both Sexes	1975-1984	1.3	1984-1997	4.7*	1997-2005	2.1*					2.1*
All Races	Male	1975-1986	2.1*	1986-1996	4.9*	1996-2005	2.4*					2.4*
All Races	Female	1975-1983	0.5	1983-1998	4.3*	1998-2005	0.7					0.7
White	Both Sexes	1975-1987	1.6*	1987-1997	5.3*	1997-2005	1.8*					1.8*
White	Male	1975-1987	1.8*	1987-1996	5.5*	1996-2005	2.2*					2.2*
White	Female	1975-1985	0.8	1985-1999	4.0*	1999-2005	-0.8					-0.8
Black	Both Sexes	1975-2005	3.0*									3.0*
Black	Male	1975-2005	3.2*									3.2*
Black	Female	1975-2005	2.5*									2.5*
<u>SEER Delay-Adjusted Incidence^a</u>												
All Races	Both Sexes	1975-1984	1.3	1984-1997	4.7*	1997-2005	2.5*					2.5*
All Races	Male	1975-2005	3.6*									3.6*
All Races	Female	1975-1983	0.4	1983-1997	4.4*	1997-2005	1.4					1.4*
White	Both Sexes	1975-1987	1.6*	1987-1997	5.3*	1997-2005	2.2*					2.2*
White	Male	1975-1987	1.8*	1987-1996	5.5*	1996-2005	2.6*					2.6*
White	Female	1975-1985	0.8	1985-1999	4.0*	1999-2005	-0.3					-0.3
Black	Both Sexes	1975-2005	3.1*									3.1*
Black	Male	1975-2005	3.3*									3.3*
Black	Female	1975-2005	2.5*									2.5*
<u>U.S. Cancer Mortality^b</u>												
All Races	Both Sexes	1975-1980	0.2	1980-1987	2.0*	1987-1996	3.8*	1996-2000	0.7	2000-2005	2.7*	2.7*
All Races	Male	1975-1979	0.3	1979-1987	2.3*	1987-1996	3.9*	1996-1999	0.4	1999-2005	2.6*	2.6*
All Races	Female	1975-1978	-1.5	1978-1988	1.4*	1988-1995	3.9*	1995-2001	0.3	2001-2005	2.1*	2.1*
White	Both Sexes	1975-1978	-1.2	1978-1987	1.7*	1987-1996	3.9*	1996-2000	0.7	2000-2005	2.7*	2.7*
White	Male	1975-1985	1.4*	1985-1996	3.9*	1996-1999	0.6	1999-2005	2.6*			2.6*
White	Female	1975-1978	-1.9	1978-1988	1.2*	1988-1996	3.6*	1996-2000	-0.6	2000-2005	2.0*	2.0*
Black	Both Sexes	1975-1988	0.8*	1988-1995	3.1*	1995-2001	0.5	2001-2005	3.5*			3.5*
Black	Male	1975-2005	1.8*									1.8*
Black	Female	1975-2005	1.6*									1.6*

Jointpoint Regression Program Version 3.3.1, April 2008, National Cancer Institute. (<http://srab.cancer.gov/jointpoint/>).

The APC is the Annual Percent Change based on rates age-adjusted to the 2000 US Std Population (19 age groups - Census P25-1130).

Trends are from the SEER 9 areas (San Francisco, Connecticut, Detroit, Hawaii, Iowa, New Mexico, Seattle, Utah, and Atlanta).

Trends are from US Mortality Files, National Center for Health Statistics, Centers for Disease Control and Prevention.

The AAPC is the Average Annual Percent Change and is based on the APCs calculated by Jointpoint over the time range of 1975-2005.

The APC/AAPC is significantly different from zero ($p < .05$).

a
b
c
*

Table XIV-2
LIVER AND INTRAHEPATIC BILE DUCT CANCER (Invasive)

AGE ADJUSTED SEER INCIDENCE^a RATES BY YEAR, RACE AND SEX

	<u>All Races</u>			<u>Whites</u>			<u>Blacks</u>		
	<u>Total</u>	<u>Males</u>	<u>Females</u>	<u>Total</u>	<u>Males</u>	<u>Females</u>	<u>Total</u>	<u>Males</u>	<u>Females</u>
<u>AGE-ADJUSTED RATES</u>									
<u>YEAR OF DIAGNOSIS:</u>									
1975	2.6	3.9	1.6	2.2	3.2	1.4	4.7	6.5	3.2
1976	2.7	3.8	1.8	2.3	3.2	1.6	4.0	6.2	-
1977	2.7	4.2	1.6	2.2	3.6	1.3	3.5	5.0	-
1978	2.7	4.2	1.6	2.2	3.3	1.4	4.2	6.8	2.1
1979	2.7	4.1	1.7	2.2	3.3	1.5	4.1	7.1	-
1980	2.6	3.9	1.7	2.2	3.3	1.5	3.6	5.0	2.5
1981	2.9	4.6	1.7	2.5	3.9	1.5	4.6	7.1	2.5
1982	2.9	4.4	1.9	2.4	3.5	1.6	3.9	5.4	2.6
1983	2.9	4.7	1.6	2.4	3.7	1.4	4.1	6.3	2.3
1984	2.9	4.3	1.9	2.3	3.4	1.6	3.3	5.3	1.9
1985	3.2	5.1	1.7	2.6	4.2	1.5	4.0	7.6	-
1986	3.2	4.8	2.0	2.6	3.9	1.7	5.0	7.6	3.2
1987	3.4	4.8	2.2	2.7	3.6	1.9	5.3	7.7	3.6
1988	3.4	5.4	1.8	2.7	4.2	1.6	4.8	8.9	-
1989	3.6	5.6	2.2	2.9	4.3	1.9	5.3	9.1	2.6
1990	3.9	6.0	2.3	3.1	4.7	1.9	6.5	10.6	3.5
1991	4.3	6.7	2.6	3.5	5.5	2.1	6.0	9.2	3.5
1992	4.0	6.1	2.4	3.2	4.8	1.9	5.6	8.4	3.4
1993	4.5	7.1	2.5	3.7	5.9	2.1	6.2	10.1	3.1
1994	4.5	7.0	2.5	3.6	5.6	2.1	5.1	9.6	1.9
1995	4.5	6.8	2.8	3.6	5.4	2.2	6.0	8.6	3.9
1996	5.4	8.3	3.1	4.4	6.7	2.6	6.7	10.8	3.6
1997	5.4	8.1	3.2	4.4	6.5	2.6	7.5	11.5	4.4
1998	5.5	8.3	3.2	4.6	7.0	2.6	6.5	9.6	4.1
1999	5.8	8.8	3.3	4.7	7.2	2.7	7.7	12.2	4.4
2000	5.6	8.5	3.2	4.7	7.0	2.7	6.9	11.6	3.4
2001	5.6	8.6	3.2	4.3	6.5	2.5	7.9	13.7	3.5
2002	5.7	8.7	3.2	4.6	6.9	2.6	7.3	12.0	3.7
2003	6.1	9.4	3.3	5.0	7.6	2.6	7.6	12.3	3.8
2004	6.3	9.8	3.3	5.0	7.8	2.6	9.1	15.3	4.4
2005	6.4	9.8	3.5	5.1	8.0	2.6	8.9	14.0	4.8
1975-2005	4.3	6.7	2.5	3.5	5.3	2.1	6.1	9.8	3.2

^a SEER 9 areas (San Francisco, Connecticut, Detroit, Hawaii, Iowa, New Mexico, Seattle, Utah, and Atlanta). Rates are per 100,000 and are age-adjusted to the 2000 US Std Population (19 age groups - Census P25-1130).
 - Statistic not shown. Rate based on less than 16 cases for the time interval.

Table XIV-3
LIVER AND INTRAHEPATIC BILE DUCT CANCER (Invasive)
AGE-ADJUSTED U.S. DEATH^a RATES BY YEAR, RACE AND SEX

	<u>All Races</u>			<u>Whites</u>			<u>Blacks</u>		
	<u>Total</u>	<u>Males</u>	<u>Females</u>	<u>Total</u>	<u>Males</u>	<u>Females</u>	<u>Total</u>	<u>Males</u>	<u>Females</u>
<u>AGE-ADJUSTED RATES</u>									
<u>YEAR OF DEATH:</u>									
1975	2.8	3.8	2.0	2.6	3.5	2.0	4.3	6.3	2.7
1976	2.7	3.8	2.0	2.5	3.5	1.9	4.5	6.8	2.7
1977	2.8	3.8	2.0	2.6	3.4	1.9	4.5	7.2	2.5
1978	2.7	3.9	1.9	2.5	3.5	1.8	4.6	7.0	2.8
1979	2.8	3.9	2.0	2.6	3.5	2.0	4.4	6.6	2.7
1980	2.8	3.9	2.0	2.6	3.5	1.9	4.5	6.8	2.8
1981	2.9	4.1	2.0	2.7	3.8	1.9	4.4	6.7	2.7
1982	2.9	4.2	2.1	2.7	3.8	1.9	4.7	7.2	2.9
1983	2.9	4.2	2.0	2.6	3.7	1.9	4.8	7.3	3.0
1984	3.0	4.3	2.1	2.7	3.8	2.0	4.8	7.9	2.7
1985	3.1	4.4	2.2	2.8	3.9	2.1	4.6	7.2	2.7
1986	3.1	4.5	2.2	2.9	4.1	2.0	4.7	7.3	2.9
1987	3.2	4.6	2.2	2.9	4.1	2.0	4.8	6.9	3.2
1988	3.3	4.8	2.2	3.0	4.4	2.1	4.8	7.2	3.0
1989	3.4	5.0	2.3	3.1	4.5	2.2	5.1	8.0	3.1
1990	3.6	5.3	2.4	3.3	4.7	2.2	5.3	7.8	3.6
1991	3.7	5.3	2.5	3.4	4.8	2.3	5.3	8.0	3.5
1992	3.9	5.7	2.6	3.6	5.2	2.4	5.4	8.5	3.3
1993	4.0	5.8	2.7	3.7	5.3	2.6	5.5	8.1	3.6
1994	4.1	6.0	2.7	3.8	5.4	2.6	5.7	8.9	3.5
1995	4.4	6.3	2.9	4.0	5.7	2.7	6.2	9.3	4.1
1996	4.4	6.5	2.9	4.1	5.9	2.7	5.9	9.1	3.7
1997	4.5	6.5	3.0	4.1	5.9	2.8	6.0	8.9	3.9
1998	4.6	6.7	2.9	4.2	6.1	2.7	6.4	10.1	3.7
1999	4.5	6.5	2.9	4.1	6.0	2.7	5.9	8.8	3.8
2000	4.6	6.8	2.9	4.2	6.1	2.7	6.1	9.5	3.6
2001	4.7	6.9	3.0	4.3	6.4	2.7	6.3	9.1	4.1
2002	4.9	7.2	3.0	4.5	6.5	2.8	6.3	10.0	3.6
2003	5.0	7.4	3.1	4.6	6.7	2.8	6.7	10.3	4.0
2004	5.1	7.4	3.2	4.7	6.7	3.0	6.9	10.8	4.1
2005	5.3	7.8	3.2	4.8	7.1	3.0	7.0	11.4	3.8
1975-2005	3.9	5.6	2.6	3.5	5.1	2.4	5.6	8.5	3.4

^a US Mortality Files, National Center for Health Statistics, Centers for Disease Control and Prevention. Rates are per 100,000 and are age-adjusted to the 2000 US Std Population (19 age groups - Census P25-1130).

- Statistic not shown. Rate based on less than 16 cases for the time interval.

Table XIV-4
LIVER AND INTRAHEPATIC BILE DUCT CANCER (Invasive)

SEER INCIDENCE^a AND U.S. DEATH^b RATES, AGE-ADJUSTED AND AGE-SPECIFIC RATES, BY RACE AND SEX

	All Races			Whites			Blacks		
	Total	Males	Females	Total	Males	Females	Total	Males	Females
<u>SEER INCIDENCE</u>									
<u>AGE AT DIAGNOSIS</u>									
AGE-ADJUSTED RATES, 2001-2005									
All ages	6.4	9.9	3.5	5.4	8.2	2.9	8.0	13.2	4.0
Under 65	3.4	5.4	1.4	2.8	4.4	1.2	5.0	8.6	2.0
65 and over	27.5	40.4	18.1	23.6	34.9	15.3	28.8	44.7	18.4
All ages(IARC world std) ^c	4.5	6.9	2.3	3.7	5.7	1.9	5.8	9.6	2.7
AGE-SPECIFIC RATES, 2001-2005									
<1	1.3	1.5	1.2	1.5	1.6	1.3	-	-	-
1-4	0.5	0.6	0.3	0.5	0.6	0.4	-	-	-
5-9	0.1	0.1	-	0.1	-	-	-	-	-
10-14	0.1	-	-	-	-	-	-	-	-
15-19	0.1	0.1	-	0.1	-	-	-	-	-
20-24	0.2	0.3	0.2	0.2	0.2	0.2	-	-	-
25-29	0.3	0.3	0.2	0.2	0.2	-	-	-	-
30-34	0.5	0.7	0.2	0.3	0.4	0.2	0.7	1.2	-
35-39	0.9	1.3	0.5	0.6	0.7	0.4	1.4	2.0	-
40-44	2.1	3.3	0.9	1.7	2.6	0.8	2.4	4.0	0.9
45-49	6.4	10.7	2.1	5.2	8.7	1.8	9.0	15.5	3.3
50-54	11.7	19.8	4.0	9.9	16.5	3.3	18.6	33.5	5.9
55-59	14.1	23.2	5.6	11.6	18.8	4.6	24.0	41.6	9.5
60-64	17.9	27.9	8.6	14.2	22.2	6.8	24.8	42.3	10.9
65-69	23.2	34.0	13.8	18.9	27.9	10.9	26.1	42.2	13.8
70-74	28.6	41.5	18.3	24.0	35.4	14.7	31.4	46.9	20.5
75-79	31.0	46.0	20.3	27.3	40.7	17.8	26.3	42.9	16.0
80-84	30.3	44.3	21.5	26.8	39.2	19.1	34.3	55.7	22.6
85+	25.5	38.0	19.8	22.7	34.1	17.5	27.3	36.1	23.8
<u>U.S. MORTALITY</u>									
<u>AGE AT DEATH</u>									
AGE-ADJUSTED RATES, 2001-2005									
All ages	5.0	7.3	3.1	4.6	6.7	2.9	6.7	10.3	3.9
Under 65	2.1	3.2	1.0	1.8	2.7	0.9	3.5	5.9	1.5
65 and over	25.2	35.7	17.8	23.9	33.9	16.7	28.4	41.0	20.5
All ages(IARC world std) ^c	3.2	4.7	1.8	2.9	4.2	1.7	4.5	7.1	2.4
AGE-SPECIFIC RATES, 2001-2005									
<1	0.1	-	-	0.1	-	-	-	-	-
1-4	0.1	0.2	0.1	0.2	0.2	0.1	-	-	-
5-9	0.0	0.0	-	0.0	-	-	-	-	-
10-14	0.0	0.0	0.0	0.0	0.0	-	-	-	-
15-19	0.1	0.1	0.0	0.0	0.1	-	-	-	-
20-24	0.1	0.1	0.1	0.1	0.1	0.1	0.1	-	-
25-29	0.2	0.2	0.1	0.1	0.1	0.1	0.3	0.4	0.2
30-34	0.3	0.4	0.2	0.2	0.2	0.2	0.5	0.8	0.3
35-39	0.5	0.8	0.3	0.4	0.5	0.3	0.9	1.5	0.4
40-44	1.2	1.8	0.6	1.0	1.4	0.5	2.0	3.0	1.0
45-49	3.7	6.0	1.6	3.2	5.0	1.3	6.3	10.5	2.8
50-54	7.2	11.9	2.7	6.1	10.0	2.4	12.9	23.2	4.2
55-59	8.8	13.9	4.1	7.6	11.7	3.6	16.6	28.8	6.6
60-64	12.1	18.1	6.7	10.8	16.1	6.0	17.2	27.5	9.2
65-69	16.6	23.9	10.3	15.3	22.0	9.3	20.6	32.0	12.2
70-74	23.1	33.0	15.0	21.5	30.8	13.8	27.4	41.9	17.6
75-79	28.6	40.7	19.9	27.4	39.2	18.9	30.0	42.4	22.6
80-84	33.0	46.4	24.8	31.8	44.7	23.8	36.1	51.4	28.1
85+	33.5	46.2	28.0	32.5	45.2	26.9	35.9	44.8	32.4

^a SEER 17 areas. Rates are per 100,000 and are age-adjusted to the 2000 US Std Population (19 age groups - Census P25-1130), unless noted.

^b US Mortality Files, National Center for Health Statistics, Centers for Disease Control and Prevention. Rates are per 100,000 and are age-adjusted to the 2000 US Std Population (19 age groups - Census P25-1130), unless noted.

^c Rates are per 100,000 and are age-adjusted to the IARC world standard population.

- Statistic not shown. Rate based on less than 16 cases for the time interval.

Table XIV-5
LIVER AND INTRAHEPATIC BILE DUCT CANCER (Invasive)

SURVIVAL RATES, BY RACE, SEX, DIAGNOSIS YEAR, STAGE AND AGE

	All Races			Whites			Blacks		
	Total	Males	Females	Total	Males	Females	Total	Males	Females
5-YR RELATIVE SURVIVAL RATES									
YEAR OF DIAGNOSIS:									
1960-1963 ^a	-	-	-	-	-	-	-	-	-
1970-1973 ^a	-	-	-	-	-	-	-	-	-
1975-1977 ^b	3.7	2.0	6.7	3.7	2.1	6.1	1.9	0.0	5.9
1978-1980 ^b	3.5	2.3	5.5	3.4	2.3	4.8	3.8	3.2	5.1
1981-1983 ^b	4.0	3.3	5.3	4.3	3.5	5.6	3.0	2.1	4.9
1984-1986 ^b	6.0	3.7	10.2	6.0	3.7	10.0	4.5	2.2	9.5
1987-1989 ^b	5.2	3.3	8.7	6.1	3.6	10.2	2.9	1.6	5.1
1990-1992 ^b	5.9	5.1	7.5	6.8	5.6	8.9	2.7	2.0	3.7
1993-1995 ^b	5.8	5.4	6.7	5.5	5.1	6.3	4.2	2.8	7.8
1996-2004 ^b	11.4 ^e	11.0 ^e	12.3 ^e	10.8 ^e	10.0 ^e	12.4 ^e	8.3 ^e	8.3	8.1 ^e
5-YR PERIOD SURVIVAL RATES^{cd}									
YEAR OF DIAGNOSIS:									
1996-2004	13.3	13.4	13.3	12.9	12.9	12.6	9.8	9.3	10.9
STAGE DISTRIBUTION (%) 1996-2004^c									
All Stages									
Number of cases	25,649	17,824	7,825	17,090	11,766	5,324	2,786	1,991	795
Percent	100%	100%	100%	100%	100%	100%	100%	100%	100%
Localized	35	35	34	34	35	33	33	32	34
Regional	25	27	23	24	25	22	27	28	25
Distant	20	20	20	20	20	21	23	23	22
Unstaged	20	19	23	22	20	25	18	18	19
5-YR RELATIVE SURVIVAL RATES, 1996-2004^c									
AGE AT DIAGNOSIS:									
<45	24.5	20.7	33.4	28.3	23.1	38.5	13.9	13.6	15.4 ^f
45-54	15.7	15.0	19.4	17.0	16.2	20.8	8.1	7.2	15.5
55-64	11.8	11.2	13.6	11.8	11.0	14.6	7.9	7.6	7.7
65-74	9.1	8.7	9.8	7.4	6.8	8.5	7.5	7.7	5.7
75+	5.0	4.5	5.3	4.4	3.8	4.8	2.0	-	1.8
Under 65	15.4	14.2	19.6	16.4	14.8	21.8	8.8	8.2	10.7
65 and over	7.3	7.2	7.6	6.1	5.7	6.6	5.7	6.4	4.0
STAGE:									
All Stages	11.7	11.4	12.4	11.4	11.0	12.3	7.9	7.9	7.7
Localized	23.8	23.5	24.3	23.9	23.2	25.1	17.2	18.6	12.6
Regional	7.7	7.4	8.6	7.5	7.1	8.5	3.8	4.1	3.2
Distant	2.9	2.3	4.3	2.6	1.6	4.4	2.7	2.5	3.2
Unstaged	4.9	4.6	5.4	4.6	4.4	4.8	3.9	2.5	7.6

^a Rates are based on End Results data from a series of hospital registries and one population-based registry.

^b Rates are from the SEER 9 areas (San Francisco, Connecticut, Detroit, Hawaii, Iowa, New Mexico, Seattle, Utah, Atlanta).

Rates are based on follow-up of patients into 2005.

^c Rates are from the SEER 17 areas (San Francisco, Connecticut, Detroit, Hawaii, Iowa, New Mexico, Seattle, Utah, Atlanta, San Jose-Monterey, Los Angeles, Alaska Native Registry, Rural Georgia, California excluding SF/SJM/LA, Kentucky, Louisiana and New Jersey). California excluding SF/SJM/LA, Kentucky, Louisiana, and New Jersey contribute cases for diagnosis years 2000-2004. The remaining 13 SEER Areas contribute cases for the entire period 1996-2004. Rates are based on follow-up of patients into 2005.

^d Period survival provides a more up-to-date estimate of survival by piecing together the most recent conditional survival estimates from several cohorts. It is computed here using three calendar year blocks (2002-2004: 0-1 year survival), (2001-2003: 1-2 year survival), (2000-2002: 2-3 year survival), (1999-2001: 3-4 year survival), (1998-2000: 4-5 years survival).

^e The difference in rates between 1975-1977 and 1996-2004 is statistically significant ($p < .05$).

^f The standard error of the survival rate is between 5 and 10 percentage points.

^g The standard error of the survival rate is greater than 10 percentage points.

- Statistic could not be calculated due to fewer than 16 cases during the time period.

Table XIV-6
LIVER AND INTRAHEPATIC BILE DUCT CANCER (Invasive)

SURVIVAL RATES^a

By Year of Diagnosis

All Races, Males and Females

Year of Diagnosis

	1975- 1979	1980- 1984	1985	1986	1987	1988	1989	1990	1991	1992	1993	1994	1995	1996	1997	1998	1999	2000	2001	2002	2003	2004
Relative Survival Rates (SEER ^b)																						
1-year	14.5	15.6	19.6	16.6	21.7	16.5	18.4	20.7	22.8	20.5	21.1	25.6	24.1	25.4	28.4	27.7	28.5	29.4	31.7	33.2	36.6	38.3
2-year	7.1	8.6	11.6	9.0	12.1	9.3	8.1	11.3	13.3	12.7	11.3	14.9	14.0	15.1	17.6	17.4	18.0	20.2	21.7	22.0	24.6	
3-year	5.0	6.2	8.3	7.5	9.1	7.4	5.9	9.1	9.8	8.6	8.2	9.3	9.5	10.8	12.6	13.3	14.3	15.4	16.0	17.3		
4-year	4.3	4.8	8.0	5.8	8.0	6.6	4.4	6.5	7.8	7.1	6.5	8.0	7.0	9.1	10.2	11.0	12.3	12.5	13.6			
5-year	3.7	4.0	7.1	5.6	6.5	5.7	3.4	5.3	6.3	5.9	4.8	6.8	5.8	8.1	8.1	9.6	10.4	11.8				
6-year	3.4	3.8	7.1	5.1	6.3	5.3	3.1	4.8	6.0	5.4	4.1	6.1	5.0	7.0	7.5	8.8	9.3					
7-year	3.2	3.4	7.0	4.6	6.3	5.3	3.0	4.5	5.3	5.0	3.7	5.7	4.5	6.6	7.1	7.5						
8-year	3.2	3.2	6.8	4.5	5.8	5.0	2.5	4.5	5.0	4.9	3.7	5.5	4.4	6.6	6.1							
9-year	3.1	3.2	6.8	4.2	5.6	4.8	2.5	4.5	5.0	4.9	3.6	5.3	4.4	6.1								
10-year	3.1	3.2	6.8	4.2	5.2	4.3	2.5	4.1	5.0	4.9	3.6	5.3	4.0									
11-year	3.1	3.2	6.8	4.2	5.2	4.1	2.5	3.8	4.8	4.9	3.6	5.3										
12-year	3.1	3.2	6.8	4.2	5.2	3.7	2.5	3.7	4.8	4.9	3.6											
13-year	3.0	3.1	6.8	4.2	5.2	3.7	2.4	3.7	4.8	4.9												
14-year	3.0	3.1	6.8	4.2	5.2	3.5	2.4	3.6	4.8													
15-year	3.0	3.1	6.8	4.2	5.2	3.5	2.4	3.6														
16-year	3.0	3.1	6.8	4.2	5.2	3.5	2.4															
17-year	3.0	3.1	6.8	4.2	5.2	3.5																
18-year	3.0	3.1	6.8	4.2	5.2																	
19-year	3.0	3.1	6.8	4.2																		
20-year	3.0	3.1	6.8																			

^a Survival rates are relative rates expressed as percents.

^b Rates are from the SEER 9 areas (San Francisco, Connecticut, Detroit, Hawaii, Iowa, New Mexico, Seattle, Utah, and Atlanta).

Table XIV-7
LIVER AND INTRAHEPATIC BILE DUCT CANCER (Invasive)

SURVIVAL RATES^a

By Year of Diagnosis

All Races, Males

Year of Diagnosis

	1975- 1979	1980- 1984	1985	1986	1987	1988	1989	1990	1991	1992	1993	1994	1995	1996	1997	1998	1999	2000	2001	2002	2003	2004
Relative Survival Rates (SEER ^b)																						
1-year	11.9	13.5	17.2	13.7	19.2	13.7	14.1	18.1	21.5	20.3	19.0	24.9	22.3	25.3	27.4	26.5	29.8	28.8	30.9	32.6	35.8	37.5
2-year	5.2	6.7	9.6	6.2	8.4	7.4	5.7	9.0	13.2	12.6	9.9	13.7	12.6	15.9	16.6	16.4	18.0	19.2	20.3	21.1	24.8	
3-year	3.3	5.0	6.7	4.5	5.8	6.3	4.0	7.6	9.9	8.1	7.0	8.6	8.9	11.1	12.0	12.2	13.7	15.3	15.0	17.7		
4-year	2.9	3.7	6.5	3.0	4.8	5.6	2.7	5.3	7.6	6.2	5.6	7.9	6.1	8.9	9.7	10.7	11.6	12.2	12.3			
5-year	2.2	3.0	5.2	2.8	3.5	4.8	1.8	4.1	5.6	5.3	4.5	6.8	4.9	7.5	7.8	9.0	10.1	11.2				
6-year	1.9	2.8	5.2	2.1	3.3	4.6	1.2	3.4	5.2	5.0	4.2	6.4	4.1	6.5	7.6	8.0	9.1					
7-year	1.6	2.4	5.2	1.9	3.3	4.6	1.2	3.4	4.5	4.5	3.9	5.8	3.6	6.2	7.1	6.6						
8-year	1.6	2.2	5.2	1.9	2.8	4.6	1.0	3.4	4.2	4.4	3.7	5.5	3.5	6.2	5.8							
9-year	1.6	2.2	5.2	1.6	2.8	4.5	1.0	3.4	4.0	4.4	3.6	5.1	3.4	5.7								
10-year	1.6	2.2	5.2	1.6	2.8	4.4	1.0	3.4	3.9	4.4	3.4	5.0	2.7									
11-year	1.6	2.2	5.2	1.6	2.8	4.1	1.0	3.1	3.9	4.4	3.4	4.9										
12-year	1.6	2.2	5.2	1.6	2.8	3.9	0.8	2.9	3.9	4.4	3.4											
13-year	1.6	1.9	5.2	1.6	2.8	3.9	0.8	2.9	3.9	4.4												
14-year	1.6	1.9	5.2	1.6	2.8	3.3	0.8	2.9	3.9													
15-year	1.6	1.9	5.2	1.6	2.8	3.3	0.8	2.8														
16-year	1.6	1.9	5.2	1.6	2.8	3.3	0.8															
17-year	1.6	1.9	5.2	1.6	2.8	3.3																
18-year	1.6	1.9	5.2	1.6	2.8																	
19-year	1.6	1.9	5.2	1.6																		
20-year	1.6	1.9	5.2																			

^a Survival rates are relative rates expressed as percents.

^b Rates are from the SEER 9 areas (San Francisco, Connecticut, Detroit, Hawaii, Iowa, New Mexico, Seattle, Utah, and Atlanta).

Table XIV-8
LIVER AND INTRAHEPATIC BILE DUCT CANCER (Invasive)

SURVIVAL RATES^a

By Year of Diagnosis

All Races, Females

Year of Diagnosis

	1975- 1979	1980- 1984	1985	1986	1987	1988	1989	1990	1991	1992	1993	1994	1995	1996	1997	1998	1999	2000	2001	2002	2003	2004
Relative Survival Rates (SEER ^b)																						
1-year	19.2	19.6	24.9	21.9	26.0	22.6	26.5	26.0	25.5	21.0	25.5	27.3	27.7	25.7	30.5	30.2	25.7	30.8	33.4	34.6	38.7	40.4
2-year	10.6	12.3	16.1	14.2	18.6	13.4	12.7	16.1	13.4	13.0	14.2	17.5	16.7	13.5	19.8	19.4	17.9	22.3	24.9	24.2	24.0	
3-year	8.1	8.4	11.9	12.9	15.1	9.7	9.2	12.3	9.6	9.6	10.8	11.0	10.7	10.2	13.8	15.7	15.4	15.6	18.3	16.5		
4-year	6.9	6.8	11.3	10.9	13.7	8.6	7.4	9.1	8.3	8.7	8.2	8.3	8.6	9.4	11.3	11.7	13.8	12.9	16.7			
5-year	6.6	5.8	11.3	10.6	11.9	7.7	6.3	7.8	7.6	6.8	5.4	6.9	7.5	9.2	8.7	10.8	10.8	12.9				
6-year	5.9	5.4	11.1	10.2	11.6	6.8	6.3	7.6	7.4	6.1	3.8	5.6	6.6	8.0	7.5	10.7	9.7					
7-year	5.9	5.0	9.9	9.5	11.6	6.4	6.1	6.6	6.8	6.0	3.4	5.4	6.3	7.5	7.1	9.6						
8-year	5.9	5.0	9.6	9.1	11.0	5.8	5.1	6.6	6.4	5.8	3.4	5.4	6.2	7.4	6.4							
9-year	5.7	5.0	9.6	8.7	10.4	5.4	5.1	6.5	6.4	5.8	3.4	5.4	6.2	6.9								
10-year	5.7	4.9	9.6	8.7	9.2	4.1	5.1	5.5	6.4	5.8	3.4	5.4	6.2									
11-year	5.7	4.9	9.6	8.7	9.2	4.1	5.1	5.1	6.4	5.4	3.4	5.4										
12-year	5.7	4.9	9.6	8.7	9.2	3.5	5.1	5.1	6.4	4.8	3.4											
13-year	5.4	4.9	9.6	8.7	9.2	3.5	5.1	5.1	6.4	4.8												
14-year	5.4	4.9	9.6	8.7	9.2	3.5	5.1	4.9	6.4													
15-year	5.4	4.9	9.6	8.7	9.2	3.5	5.1	4.9														
16-year	5.4	4.9	9.6	8.7	9.2	3.5	5.1															
17-year	5.4	4.9	9.6	8.7	9.2	3.5																
18-year	4.9	4.9	9.6	8.7	9.2																	
19-year	4.9	4.9	9.6	8.7																		
20-year	4.9	4.9	9.1																			

^a Survival rates are relative rates expressed as percents.

^b Rates are from the SEER 9 areas (San Francisco, Connecticut, Detroit, Hawaii, Iowa, New Mexico, Seattle, Utah, and Atlanta).

Table XIV-9
LIVER AND INTRAHEPATIC BILE DUCT CANCER (Invasive)

Risk of Being Diagnosed With Cancer in 10, 20 and 30 Years, Lifetime Risk of Being Diagnosed with Cancer, and
Lifetime Risk of Dying from Cancer Given Cancer Free At Current Age
Both Sexes, 2003-2005 By Race/Ethnicity

Race/ Ethnicity	Current Age	Risk of Being Diagnosed with Cancer			Risk of Dying from Cancer	
		+10 yrs Percent (95% C.I.)	+20 yrs Percent (95% C.I.)	+30 yrs Percent (95% C.I.)	Eventually Percent (95% C.I.)	Eventually Percent (95% C.I.)
All Races	0	0.00 (0.00, 0.01)	0.01 (0.01, 0.01)	0.01 (0.01, 0.01)	0.69 (0.68, 0.70)	0.56 (0.55, 0.56)
	10	0.00 (0.00, 0.00)	0.00 (0.00, 0.00)	0.01 (0.01, 0.01)	0.69 (0.68, 0.70)	0.56 (0.56, 0.57)
	20	0.00 (0.00, 0.00)	0.01 (0.01, 0.01)	0.06 (0.05, 0.06)	0.69 (0.68, 0.71)	0.56 (0.56, 0.57)
	30	0.01 (0.01, 0.01)	0.05 (0.05, 0.06)	0.18 (0.18, 0.19)	0.70 (0.69, 0.71)	0.57 (0.56, 0.57)
	40	0.05 (0.04, 0.05)	0.18 (0.17, 0.18)	0.35 (0.35, 0.36)	0.70 (0.69, 0.71)	0.57 (0.57, 0.58)
	50	0.13 (0.13, 0.14)	0.32 (0.31, 0.32)	0.53 (0.52, 0.54)	0.67 (0.66, 0.68)	0.56 (0.56, 0.57)
	60	0.19 (0.19, 0.20)	0.42 (0.41, 0.43)	0.54 (0.53, 0.56)	0.57 (0.56, 0.58)	0.51 (0.51, 0.52)
	70	0.26 (0.25, 0.27)	0.40 (0.39, 0.41)	- (- , -)	0.44 (0.42, 0.45)	0.43 (0.43, 0.44)
80	0.20 (0.20, 0.21)	- (- , -)	- (- , -)	0.25 (0.24, 0.26)	0.30 (0.29, 0.30)	
White	0	0.01 (0.00, 0.01)	0.01 (0.01, 0.01)	0.01 (0.01, 0.01)	0.59 (0.58, 0.60)	0.52 (0.51, 0.53)
	10	0.00 (0.00, 0.00)	0.00 (0.00, 0.00)	0.01 (0.01, 0.01)	0.59 (0.58, 0.60)	0.52 (0.52, 0.53)
	20	0.00 (0.00, 0.00)	0.01 (0.01, 0.01)	0.04 (0.04, 0.05)	0.59 (0.58, 0.60)	0.53 (0.52, 0.53)
	30	0.01 (0.00, 0.01)	0.04 (0.04, 0.04)	0.15 (0.15, 0.16)	0.59 (0.58, 0.61)	0.53 (0.52, 0.54)
	40	0.04 (0.04, 0.04)	0.15 (0.14, 0.15)	0.29 (0.29, 0.30)	0.60 (0.58, 0.61)	0.53 (0.53, 0.54)
	50	0.11 (0.11, 0.12)	0.26 (0.26, 0.27)	0.44 (0.43, 0.46)	0.57 (0.56, 0.59)	0.53 (0.52, 0.53)
	60	0.16 (0.15, 0.16)	0.35 (0.34, 0.36)	0.46 (0.45, 0.47)	0.49 (0.47, 0.50)	0.48 (0.48, 0.49)
	70	0.22 (0.21, 0.23)	0.35 (0.34, 0.36)	- (- , -)	0.38 (0.37, 0.39)	0.41 (0.41, 0.42)
80	0.18 (0.17, 0.19)	- (- , -)	- (- , -)	0.22 (0.21, 0.23)	0.28 (0.28, 0.29)	
Black	0	0.00 (0.00, 0.01)	0.00 (0.00, 0.01)	0.01 (0.00, 0.01)	0.70 (0.67, 0.74)	0.61 (0.59, 0.63)
	10	0.00 (0.00, 0.00)	0.00 (0.00, 0.01)	0.02 (0.01, 0.02)	0.72 (0.68, 0.76)	0.63 (0.61, 0.64)
	20	0.00 (0.00, 0.00)	0.01 (0.01, 0.02)	0.07 (0.07, 0.08)	0.72 (0.68, 0.76)	0.63 (0.61, 0.65)
	30	0.01 (0.01, 0.01)	0.07 (0.06, 0.08)	0.27 (0.25, 0.28)	0.73 (0.69, 0.77)	0.63 (0.62, 0.65)
	40	0.06 (0.05, 0.07)	0.26 (0.24, 0.28)	0.47 (0.44, 0.50)	0.74 (0.70, 0.78)	0.64 (0.62, 0.66)
	50	0.21 (0.20, 0.23)	0.43 (0.40, 0.46)	0.60 (0.57, 0.64)	0.71 (0.67, 0.75)	0.63 (0.61, 0.65)
	60	0.24 (0.22, 0.27)	0.44 (0.41, 0.47)	0.54 (0.51, 0.58)	0.56 (0.52, 0.60)	0.54 (0.52, 0.56)
	70	0.24 (0.22, 0.27)	0.37 (0.34, 0.41)	- (- , -)	0.40 (0.36, 0.44)	0.45 (0.43, 0.47)
80	0.21 (0.17, 0.24)	- (- , -)	- (- , -)	0.25 (0.21, 0.29)	0.32 (0.30, 0.34)	

Devcan Version 7.0.0, April 2008, National Cancer Institute (<http://srab.cancer.gov/devcan/>).

Source: Incidence data are from the SEER 17 areas (San Francisco, Connecticut, Detroit, Hawaii, Iowa, New Mexico, Seattle, Utah, Atlanta, San Jose-Monterey, Los Angeles, Alaska Native Registry, Rural Georgia, California excluding SF/SJM/LA, Kentucky, Louisiana and New Jersey). Mortality data are from the NCHS public use data file for the total US.

- Statistic could not be calculated.

A percent or confidence interval value of 0.00 represents a value that is below 0.005.

Table XIV-9 - continued
 LIVER AND INTRAHEPATIC BILE DUCT CANCER (Invasive)

Risk of Being Diagnosed With Cancer in 10, 20 and 30 Years, Lifetime Risk of Being Diagnosed with Cancer, and
 Lifetime Risk of Dying from Cancer Given Cancer Free At Current Age
 Both Sexes, 2003-2005 By Race/Ethnicity

Race/ Ethnicity	Current Age	Risk of Being Diagnosed with Cancer				Risk of Dying from Cancer	
		+10 yrs Percent (95% C.I.)	+20 yrs Percent (95% C.I.)	+30 yrs Percent (95% C.I.)	Eventually Percent (95% C.I.)	Eventually Percent (95% C.I.)	
Asian/ Pacific Islander	0	0.00 (0.00, 0.01)	0.01 (0.00, 0.01)	0.01 (0.01, 0.01)	1.82 (1.73, 1.91)	1.54 (1.47, 1.62)	
	10	0.00 (0.00, 0.00)	0.01 (0.00, 0.01)	0.03 (0.02, 0.03)	1.83 (1.74, 1.92)	1.55 (1.48, 1.63)	
	20	0.01 (0.00, 0.01)	0.03 (0.02, 0.03)	0.12 (0.11, 0.13)	1.83 (1.75, 1.93)	1.55 (1.48, 1.64)	
	30	0.02 (0.02, 0.03)	0.11 (0.10, 0.12)	0.34 (0.32, 0.36)	1.83 (1.75, 1.93)	1.56 (1.48, 1.64)	
	40	0.09 (0.08, 0.10)	0.32 (0.30, 0.34)	0.75 (0.72, 0.79)	1.82 (1.74, 1.92)	1.55 (1.48, 1.64)	
	50	0.23 (0.21, 0.24)	0.67 (0.64, 0.71)	1.25 (1.20, 1.31)	1.76 (1.67, 1.85)	1.52 (1.44, 1.60)	
	60	0.46 (0.43, 0.49)	1.06 (1.01, 1.12)	1.44 (1.37, 1.52)	1.58 (1.50, 1.68)	1.42 (1.34, 1.51)	
	70	0.65 (0.61, 0.70)	1.07 (1.00, 1.14)	- (- , -)	1.22 (1.13, 1.32)	1.21 (1.13, 1.30)	
	80	0.51 (0.46, 0.57)	- (- , -)	- (- , -)	0.70 (0.61, 0.80)	0.82 (0.74, 0.92)	
American Indian/ Alaska Native ^a	0	0.01 (0.00, 0.04)	0.01 (0.00, 0.04)	0.02 (0.01, 0.05)	1.00 (0.78, 1.39)	0.87 (0.75, 1.02)	
	10	0.00 (0.00, 0.01)	0.01 (0.00, 0.03)	0.01 (0.00, 0.04)	1.01 (0.78, 1.40)	0.88 (0.77, 1.04)	
	20	0.01 (0.00, 0.02)	0.01 (0.00, 0.03)	0.07 (0.04, 0.11)	1.02 (0.78, 1.41)	0.89 (0.77, 1.05)	
	30	0.01 (0.00, 0.02)	0.06 (0.04, 0.10)	0.27 (0.21, 0.35)	1.03 (0.79, 1.43)	0.91 (0.79, 1.07)	
	40	0.06 (0.04, 0.09)	0.27 (0.21, 0.35)	0.53 (0.42, 0.66)	1.05 (0.80, 1.46)	0.93 (0.81, 1.10)	
	50	0.22 (0.16, 0.30)	0.49 (0.38, 0.62)	0.82 (0.65, 1.02)	1.03 (0.78, 1.46)	0.95 (0.82, 1.12)	
	60	0.28 (0.20, 0.40)	0.64 (0.48, 0.84)	0.77 (0.58, 1.02)	0.87 (0.61, 1.33)	0.91 (0.77, 1.09)	
	70	0.42 (0.28, 0.60)	0.57 (0.39, 0.82)	- (- , -)	0.68 (0.42, 1.20)	0.83 (0.67, 1.04)	
	80	0.21 (0.09, 0.44)	- (- , -)	- (- , -)	0.37 (0.11, 1.07)	0.63 (0.46, 0.91)	
Hispanic ^b	0	0.01 (0.00, 0.01)	0.01 (0.00, 0.01)	0.01 (0.01, 0.01)	1.15 (1.10, 1.21)	1.03 (0.99, 1.07)	
	10	0.00 (0.00, 0.00)	0.00 (0.00, 0.00)	0.01 (0.01, 0.01)	1.16 (1.11, 1.22)	1.04 (1.00, 1.08)	
	20	0.00 (0.00, 0.00)	0.01 (0.01, 0.01)	0.07 (0.06, 0.08)	1.16 (1.11, 1.22)	1.05 (1.01, 1.09)	
	30	0.01 (0.01, 0.01)	0.07 (0.06, 0.08)	0.26 (0.25, 0.28)	1.17 (1.12, 1.23)	1.05 (1.02, 1.10)	
	40	0.06 (0.06, 0.07)	0.26 (0.25, 0.28)	0.55 (0.53, 0.58)	1.18 (1.12, 1.24)	1.06 (1.02, 1.10)	
	50	0.20 (0.19, 0.22)	0.50 (0.48, 0.53)	0.87 (0.83, 0.91)	1.14 (1.08, 1.20)	1.05 (1.01, 1.09)	
	60	0.32 (0.29, 0.34)	0.70 (0.66, 0.74)	0.94 (0.89, 0.99)	0.98 (0.93, 1.05)	0.97 (0.93, 1.01)	
	70	0.43 (0.40, 0.47)	0.69 (0.65, 0.75)	- (- , -)	0.75 (0.69, 0.81)	0.83 (0.79, 0.88)	
	80	0.34 (0.30, 0.39)	- (- , -)	- (- , -)	0.41 (0.36, 0.48)	0.59 (0.54, 0.64)	

Devcan Version 7.0.0, April 2008, National Cancer Institute (<http://srab.cancer.gov/devcan/>).

Source: Incidence data are from the SEER 17 areas (San Francisco, Connecticut, Detroit, Hawaii, Iowa, New Mexico, Seattle, Utah, Atlanta, San Jose-Monterey, Los Angeles, Alaska Native Registry, Rural Georgia, California excluding SF/SJM/LA, Kentucky, Louisiana and New Jersey). Mortality data are from the NCHS public use data file for the total US.

^a Underlying incidence and mortality data for American Indian/Alaska Native are based on the CHSDA (Contract Health Service Delivery Area) counties.

^b Hispanic is not mutually exclusive from whites, blacks, Asian/Pacific Islanders, and American Indians/Alaska Natives. Underlying incidence data for Hispanics are based on NHIA and exclude cases from the Alaska Native Registry and Kentucky. Underlying mortality data for Hispanics exclude deaths from Minnesota, New Hampshire and North Dakota.

- Statistic could not be calculated.

A percent or confidence interval value of 0.00 represents a value that is below 0.005.

Table XIV-9 - continued
 LIVER AND INTRAHEPATIC BILE DUCT CANCER (Invasive)

Risk of Being Diagnosed With Cancer in 10, 20 and 30 Years, Lifetime Risk of Being Diagnosed with Cancer, and
 Lifetime Risk of Dying from Cancer Given Cancer Free At Current Age
 Males, 2003-2005 By Race/Ethnicity

Race/ Ethnicity	Current Age	Risk of Being Diagnosed with Cancer				Risk of Dying from Cancer	
		+10 yrs Percent (95% C.I.)	+20 yrs Percent (95% C.I.)	+30 yrs Percent (95% C.I.)	Eventually Percent (95% C.I.)	Eventually Percent (95% C.I.)	
All Races	0	0.01 (0.00, 0.01)	0.01 (0.01, 0.01)	0.01 (0.01, 0.01)	0.97 (0.95, 0.99)	0.72 (0.71, 0.73)	
	10	0.00 (0.00, 0.00)	0.00 (0.00, 0.01)	0.02 (0.01, 0.02)	0.97 (0.95, 0.99)	0.73 (0.72, 0.74)	
	20	0.00 (0.00, 0.00)	0.01 (0.01, 0.02)	0.09 (0.08, 0.09)	0.98 (0.96, 1.00)	0.73 (0.73, 0.74)	
	30	0.01 (0.01, 0.01)	0.09 (0.08, 0.09)	0.30 (0.29, 0.31)	0.99 (0.97, 1.01)	0.74 (0.73, 0.75)	
	40	0.08 (0.07, 0.08)	0.29 (0.28, 0.30)	0.55 (0.54, 0.57)	0.99 (0.97, 1.01)	0.75 (0.74, 0.76)	
	50	0.22 (0.22, 0.23)	0.50 (0.48, 0.51)	0.78 (0.76, 0.80)	0.95 (0.93, 0.97)	0.74 (0.73, 0.75)	
	60	0.29 (0.28, 0.30)	0.60 (0.59, 0.62)	0.76 (0.74, 0.78)	0.79 (0.77, 0.81)	0.66 (0.65, 0.66)	
	70	0.37 (0.35, 0.38)	0.55 (0.53, 0.57)	- (- , -)	0.58 (0.56, 0.61)	0.55 (0.54, 0.56)	
80	0.28 (0.27, 0.30)	- (- , -)	- (- , -)	0.33 (0.31, 0.35)	0.37 (0.36, 0.38)		
White	0	0.01 (0.00, 0.01)	0.01 (0.01, 0.01)	0.01 (0.01, 0.01)	0.83 (0.81, 0.85)	0.67 (0.66, 0.68)	
	10	0.00 (0.00, 0.00)	0.00 (0.00, 0.00)	0.01 (0.01, 0.01)	0.83 (0.81, 0.85)	0.68 (0.67, 0.69)	
	20	0.00 (0.00, 0.00)	0.01 (0.01, 0.01)	0.07 (0.06, 0.07)	0.83 (0.81, 0.85)	0.68 (0.67, 0.69)	
	30	0.01 (0.01, 0.01)	0.07 (0.06, 0.07)	0.24 (0.24, 0.25)	0.84 (0.82, 0.86)	0.69 (0.68, 0.70)	
	40	0.06 (0.06, 0.06)	0.24 (0.23, 0.25)	0.46 (0.44, 0.47)	0.85 (0.83, 0.87)	0.70 (0.69, 0.71)	
	50	0.19 (0.18, 0.19)	0.41 (0.40, 0.42)	0.66 (0.65, 0.68)	0.81 (0.79, 0.84)	0.69 (0.68, 0.70)	
	60	0.24 (0.23, 0.25)	0.51 (0.50, 0.53)	0.65 (0.63, 0.67)	0.68 (0.65, 0.70)	0.62 (0.61, 0.63)	
	70	0.32 (0.31, 0.34)	0.49 (0.47, 0.51)	- (- , -)	0.51 (0.49, 0.54)	0.53 (0.52, 0.54)	
80	0.25 (0.24, 0.27)	- (- , -)	- (- , -)	0.29 (0.28, 0.31)	0.36 (0.35, 0.37)		
Black	0	0.00 (0.00, 0.01)	0.00 (0.00, 0.01)	0.01 (0.00, 0.01)	1.01 (0.95, 1.08)	0.82 (0.80, 0.85)	
	10	0.00 (0.00, 0.00)	0.01 (0.00, 0.01)	0.02 (0.02, 0.03)	1.03 (0.97, 1.10)	0.85 (0.82, 0.88)	
	20	0.00 (0.00, 0.01)	0.02 (0.01, 0.03)	0.12 (0.10, 0.13)	1.04 (0.98, 1.11)	0.85 (0.82, 0.88)	
	30	0.02 (0.01, 0.02)	0.12 (0.10, 0.13)	0.45 (0.42, 0.48)	1.06 (1.00, 1.14)	0.87 (0.84, 0.90)	
	40	0.10 (0.09, 0.12)	0.45 (0.41, 0.48)	0.76 (0.72, 0.82)	1.08 (1.02, 1.15)	0.88 (0.85, 0.91)	
	50	0.37 (0.34, 0.40)	0.71 (0.66, 0.76)	0.93 (0.87, 0.99)	1.04 (0.98, 1.12)	0.87 (0.84, 0.90)	
	60	0.39 (0.35, 0.44)	0.65 (0.59, 0.71)	0.77 (0.70, 0.84)	0.79 (0.72, 0.87)	0.71 (0.68, 0.74)	
	70	0.34 (0.30, 0.40)	0.50 (0.44, 0.57)	- (- , -)	0.53 (0.46, 0.61)	0.56 (0.53, 0.60)	
80	0.28 (0.22, 0.36)	- (- , -)	- (- , -)	0.33 (0.26, 0.43)	0.40 (0.36, 0.45)		

Devcan Version 7.0.0, April 2008, National Cancer Institute (<http://srab.cancer.gov/devcan/>).

Source: Incidence data are from the SEER 17 areas (San Francisco, Connecticut, Detroit, Hawaii, Iowa, New Mexico, Seattle, Utah, Atlanta, San Jose-Monterey, Los Angeles, Alaska Native Registry, Rural Georgia, California excluding SF/SJM/LA, Kentucky, Louisiana and New Jersey). Mortality data are from the NCHS public use data file for the total US.

- Statistic could not be calculated.

A percent or confidence interval value of 0.00 represents a value that is below 0.005.

Table XIV-9 - continued
 LIVER AND INTRAHEPATIC BILE DUCT CANCER (Invasive)

Risk of Being Diagnosed With Cancer in 10, 20 and 30 Years, Lifetime Risk of Being Diagnosed with Cancer, and
 Lifetime Risk of Dying from Cancer Given Cancer Free At Current Age
 Males, 2003-2005 By Race/Ethnicity

Race/ Ethnicity	Current Age	Risk of Being Diagnosed with Cancer				Risk of Dying from Cancer	
		+10 yrs Percent (95% C.I.)	+20 yrs Percent (95% C.I.)	+30 yrs Percent (95% C.I.)	Eventually Percent (95% C.I.)	Eventually Percent (95% C.I.)	
Asian/ Pacific Islander	0	0.00 (0.00, 0.01)	0.01 (0.00, 0.01)	0.01 (0.01, 0.02)	2.45 (2.32, 2.59)	1.90 (1.80, 2.02)	
	10	0.00 (0.00, 0.00)	0.01 (0.01, 0.01)	0.05 (0.04, 0.06)	2.47 (2.34, 2.61)	1.92 (1.82, 2.04)	
	20	0.01 (0.00, 0.01)	0.05 (0.04, 0.06)	0.21 (0.19, 0.23)	2.47 (2.34, 2.62)	1.93 (1.82, 2.05)	
	30	0.04 (0.03, 0.05)	0.20 (0.18, 0.22)	0.58 (0.54, 0.62)	2.48 (2.35, 2.63)	1.93 (1.83, 2.05)	
	40	0.16 (0.15, 0.18)	0.55 (0.51, 0.58)	1.20 (1.13, 1.27)	2.46 (2.33, 2.61)	1.92 (1.82, 2.05)	
	50	0.39 (0.36, 0.42)	1.05 (0.99, 1.12)	1.82 (1.72, 1.93)	2.34 (2.21, 2.49)	1.86 (1.75, 1.98)	
	60	0.69 (0.64, 0.75)	1.50 (1.40, 1.60)	1.94 (1.82, 2.07)	2.04 (1.91, 2.19)	1.69 (1.59, 1.82)	
	70	0.89 (0.82, 0.98)	1.39 (1.28, 1.51)	- (- , -)	1.50 (1.37, 1.65)	1.39 (1.28, 1.52)	
	80	0.65 (0.56, 0.75)	- (- , -)	- (- , -)	0.79 (0.67, 0.94)	0.86 (0.75, 1.01)	
American Indian/ Alaska Native ^a	0	0.02 (0.00, 0.08)	0.03 (0.01, 0.09)	0.04 (0.01, 0.10)	1.18 (0.90, 1.87)	0.88 (0.73, 1.14)	
	10	0.00 (0.00, 0.03)	0.01 (0.00, 0.04)	0.02 (0.01, 0.06)	1.18 (0.90, 1.88)	0.90 (0.74, 1.16)	
	20	0.01 (0.00, 0.03)	0.02 (0.00, 0.05)	0.11 (0.06, 0.17)	1.19 (0.90, 1.90)	0.91 (0.75, 1.18)	
	30	0.01 (0.00, 0.04)	0.10 (0.06, 0.17)	0.44 (0.33, 0.59)	1.21 (0.92, 1.93)	0.93 (0.77, 1.21)	
	40	0.10 (0.06, 0.16)	0.45 (0.33, 0.60)	0.78 (0.59, 1.01)	1.24 (0.94, 1.99)	0.96 (0.79, 1.25)	
	50	0.37 (0.26, 0.51)	0.72 (0.53, 0.95)	1.02 (0.77, 1.35)	1.21 (0.90, 2.00)	0.98 (0.80, 1.28)	
	60	0.38 (0.24, 0.58)	0.72 (0.48, 1.04)	0.91 (0.61, 1.35)	0.92 (0.62, 1.78)	0.90 (0.71, 1.24)	
	70	0.41 (0.22, 0.70)	0.64 (0.35, 1.11)	- (- , -)	0.65 (0.36, 1.67)	0.79 (0.58, 1.19)	
	80	0.35 (0.11, 0.89)	- (- , -)	- (- , -)	0.36 (0.11, 1.86)	0.56 (0.33, 1.12)	
Hispanic ^b	0	0.01 (0.01, 0.01)	0.01 (0.01, 0.01)	0.01 (0.01, 0.01)	1.56 (1.48, 1.67)	1.30 (1.24, 1.36)	
	10	0.00 (0.00, 0.00)	0.00 (0.00, 0.01)	0.01 (0.01, 0.02)	1.58 (1.49, 1.68)	1.31 (1.25, 1.38)	
	20	0.00 (0.00, 0.00)	0.01 (0.01, 0.01)	0.12 (0.11, 0.13)	1.58 (1.50, 1.69)	1.32 (1.26, 1.39)	
	30	0.01 (0.01, 0.01)	0.12 (0.11, 0.13)	0.44 (0.41, 0.47)	1.60 (1.51, 1.71)	1.33 (1.27, 1.40)	
	40	0.11 (0.10, 0.12)	0.44 (0.41, 0.46)	0.86 (0.82, 0.91)	1.61 (1.52, 1.72)	1.35 (1.28, 1.42)	
	50	0.34 (0.31, 0.36)	0.78 (0.73, 0.83)	1.26 (1.19, 1.33)	1.55 (1.46, 1.66)	1.33 (1.27, 1.41)	
	60	0.47 (0.43, 0.51)	0.98 (0.91, 1.05)	1.26 (1.17, 1.36)	1.29 (1.20, 1.41)	1.21 (1.14, 1.28)	
	70	0.59 (0.53, 0.65)	0.91 (0.82, 1.00)	- (- , -)	0.95 (0.85, 1.07)	1.01 (0.94, 1.10)	
	80	0.45 (0.37, 0.54)	- (- , -)	- (- , -)	0.50 (0.41, 0.63)	0.71 (0.63, 0.81)	

Devcan Version 7.0.0, April 2008, National Cancer Institute (<http://srab.cancer.gov/devcan/>).

Source: Incidence data are from the SEER 17 areas (San Francisco, Connecticut, Detroit, Hawaii, Iowa, New Mexico, Seattle, Utah, Atlanta, San Jose-Monterey, Los Angeles, Alaska Native Registry, Rural Georgia, California excluding SF/SJM/LA, Kentucky, Louisiana and New Jersey). Mortality data are from the NCHS public use data file for the total US.

^a Underlying incidence and mortality data for American Indian/Alaska Native are based on the CHSDA (Contract Health Service Delivery Area) counties.

^b Hispanic is not mutually exclusive from whites, blacks, Asian/Pacific Islanders, and American Indians/Alaska Natives. Underlying incidence data for Hispanics are based on NHIA and exclude cases from the Alaska Native Registry and Kentucky. Underlying mortality data for Hispanics exclude deaths from Minnesota, New Hampshire and North Dakota.

- Statistic could not be calculated.

A percent or confidence interval value of 0.00 represents a value that is below 0.005.

Table XIV-9 - continued
 LIVER AND INTRAHEPATIC BILE DUCT CANCER (Invasive)

Risk of Being Diagnosed With Cancer in 10, 20 and 30 Years, Lifetime Risk of Being Diagnosed with Cancer, and
 Lifetime Risk of Dying from Cancer Given Cancer Free At Current Age
 Females, 2003-2005 By Race/Ethnicity

Race/ Ethnicity	Current Age	Risk of Being Diagnosed with Cancer				Risk of Dying from Cancer	
		+10 yrs Percent (95% C.I.)	+20 yrs Percent (95% C.I.)	+30 yrs Percent (95% C.I.)	Eventually Percent (95% C.I.)	Eventually Percent (95% C.I.)	
All Races	0	0.00 (0.00, 0.01)	0.00 (0.00, 0.01)	0.01 (0.01, 0.01)	0.43 (0.41, 0.44)	0.40 (0.39, 0.41)	
	10	0.00 (0.00, 0.00)	0.00 (0.00, 0.00)	0.01 (0.01, 0.01)	0.43 (0.42, 0.44)	0.40 (0.40, 0.41)	
	20	0.00 (0.00, 0.00)	0.01 (0.00, 0.01)	0.02 (0.02, 0.02)	0.43 (0.42, 0.44)	0.41 (0.40, 0.41)	
	30	0.00 (0.00, 0.00)	0.02 (0.02, 0.02)	0.07 (0.06, 0.07)	0.43 (0.42, 0.44)	0.41 (0.40, 0.41)	
	40	0.02 (0.02, 0.02)	0.06 (0.06, 0.07)	0.16 (0.15, 0.17)	0.43 (0.41, 0.44)	0.41 (0.40, 0.41)	
	50	0.05 (0.05, 0.05)	0.15 (0.14, 0.16)	0.29 (0.28, 0.30)	0.42 (0.41, 0.43)	0.41 (0.40, 0.41)	
	60	0.10 (0.10, 0.11)	0.26 (0.25, 0.27)	0.36 (0.35, 0.37)	0.39 (0.38, 0.40)	0.39 (0.38, 0.39)	
	70	0.17 (0.16, 0.18)	0.29 (0.27, 0.30)	- (- , -)	0.32 (0.31, 0.33)	0.34 (0.34, 0.35)	
80	0.15 (0.14, 0.16)	- (- , -)	- (- , -)	0.20 (0.19, 0.21)	0.25 (0.24, 0.26)		
White	0	0.00 (0.00, 0.01)	0.01 (0.00, 0.01)	0.01 (0.01, 0.01)	0.36 (0.35, 0.37)	0.38 (0.37, 0.38)	
	10	0.00 (0.00, 0.00)	0.00 (0.00, 0.00)	0.01 (0.01, 0.01)	0.36 (0.35, 0.37)	0.38 (0.37, 0.39)	
	20	0.00 (0.00, 0.00)	0.01 (0.00, 0.01)	0.02 (0.02, 0.02)	0.36 (0.34, 0.37)	0.38 (0.37, 0.39)	
	30	0.00 (0.00, 0.00)	0.02 (0.01, 0.02)	0.06 (0.05, 0.06)	0.36 (0.34, 0.37)	0.38 (0.37, 0.39)	
	40	0.01 (0.01, 0.02)	0.05 (0.05, 0.06)	0.13 (0.12, 0.14)	0.36 (0.34, 0.37)	0.38 (0.38, 0.39)	
	50	0.04 (0.04, 0.05)	0.12 (0.11, 0.13)	0.24 (0.23, 0.25)	0.35 (0.34, 0.36)	0.38 (0.37, 0.39)	
	60	0.08 (0.08, 0.09)	0.21 (0.20, 0.22)	0.30 (0.28, 0.31)	0.32 (0.31, 0.34)	0.36 (0.36, 0.37)	
	70	0.14 (0.13, 0.15)	0.24 (0.23, 0.25)	- (- , -)	0.27 (0.26, 0.28)	0.32 (0.32, 0.33)	
80	0.14 (0.13, 0.15)	- (- , -)	- (- , -)	0.17 (0.16, 0.19)	0.24 (0.23, 0.24)		
Black	0	0.00 (0.00, 0.01)	0.00 (0.00, 0.01)	0.01 (0.00, 0.01)	0.42 (0.38, 0.46)	0.42 (0.40, 0.44)	
	10	0.00 (0.00, 0.00)	0.00 (0.00, 0.01)	0.01 (0.01, 0.01)	0.43 (0.39, 0.47)	0.43 (0.41, 0.45)	
	20	0.00 (0.00, 0.00)	0.01 (0.00, 0.01)	0.03 (0.02, 0.04)	0.43 (0.39, 0.47)	0.43 (0.41, 0.45)	
	30	0.01 (0.00, 0.01)	0.03 (0.02, 0.04)	0.10 (0.09, 0.12)	0.43 (0.39, 0.47)	0.43 (0.41, 0.45)	
	40	0.02 (0.02, 0.03)	0.10 (0.08, 0.11)	0.20 (0.18, 0.23)	0.43 (0.39, 0.48)	0.43 (0.41, 0.46)	
	50	0.08 (0.06, 0.09)	0.19 (0.16, 0.21)	0.32 (0.29, 0.36)	0.42 (0.38, 0.47)	0.43 (0.41, 0.45)	
	60	0.12 (0.10, 0.14)	0.27 (0.23, 0.30)	0.36 (0.32, 0.40)	0.38 (0.33, 0.43)	0.41 (0.39, 0.44)	
	70	0.17 (0.14, 0.21)	0.28 (0.24, 0.33)	- (- , -)	0.31 (0.26, 0.36)	0.37 (0.35, 0.39)	
80	0.16 (0.13, 0.21)	- (- , -)	- (- , -)	0.20 (0.15, 0.25)	0.28 (0.25, 0.31)		

Devcan Version 7.0.0, April 2008, National Cancer Institute (<http://srab.cancer.gov/devcan/>).

Source: Incidence data are from the SEER 17 areas (San Francisco, Connecticut, Detroit, Hawaii, Iowa, New Mexico, Seattle, Utah, Atlanta, San Jose-Monterey, Los Angeles, Alaska Native Registry, Rural Georgia, California excluding SF/SJM/LA, Kentucky, Louisiana and New Jersey). Mortality data are from the NCHS public use data file for the total US.

- Statistic could not be calculated.

A percent or confidence interval value of 0.00 represents a value that is below 0.005.

Table XIV-9 - continued
 LIVER AND INTRAHEPATIC BILE DUCT CANCER (Invasive)

Risk of Being Diagnosed With Cancer in 10, 20 and 30 Years, Lifetime Risk of Being Diagnosed with Cancer, and
 Lifetime Risk of Dying from Cancer Given Cancer Free At Current Age
 Females, 2003-2005 By Race/Ethnicity

Race/ Ethnicity	Current Age	Risk of Being Diagnosed with Cancer				Risk of Dying from Cancer	
		+10 yrs Percent (95% C.I.)	+20 yrs Percent (95% C.I.)	+30 yrs Percent (95% C.I.)	Eventually Percent (95% C.I.)	Eventually Percent (95% C.I.)	
Asian/ Pacific Islander	0	0.00 (0.00, 0.01)	0.00 (0.00, 0.01)	0.01 (0.00, 0.01)	1.27 (1.16, 1.40)	1.23 (1.12, 1.35)	
	10	0.00 (0.00, 0.00)	0.00 (0.00, 0.01)	0.01 (0.01, 0.01)	1.28 (1.17, 1.41)	1.24 (1.13, 1.36)	
	20	0.00 (0.00, 0.01)	0.01 (0.00, 0.01)	0.04 (0.03, 0.05)	1.28 (1.17, 1.41)	1.24 (1.13, 1.36)	
	30	0.00 (0.00, 0.01)	0.04 (0.03, 0.05)	0.11 (0.10, 0.13)	1.28 (1.17, 1.41)	1.24 (1.13, 1.36)	
	40	0.03 (0.02, 0.04)	0.11 (0.09, 0.13)	0.36 (0.33, 0.40)	1.28 (1.17, 1.41)	1.24 (1.13, 1.37)	
	50	0.08 (0.07, 0.09)	0.34 (0.30, 0.37)	0.77 (0.71, 0.83)	1.26 (1.15, 1.39)	1.23 (1.13, 1.36)	
	60	0.26 (0.23, 0.30)	0.71 (0.65, 0.77)	1.03 (0.95, 1.12)	1.21 (1.10, 1.35)	1.20 (1.09, 1.33)	
	70	0.47 (0.42, 0.52)	0.82 (0.74, 0.90)	- (- , -)	1.01 (0.90, 1.15)	1.08 (0.96, 1.21)	
	80	0.41 (0.35, 0.48)	- (- , -)	- (- , -)	0.64 (0.52, 0.79)	0.80 (0.67, 0.95)	
American Indian/ Alaska Native ^a	0	0.00 (0.00, 0.05)	0.00 (0.00, 0.05)	0.01 (0.00, 0.05)	0.83 (0.50, 1.48)	0.85 (0.68, 1.09)	
	10	0.00 (0.00, 0.02)	0.01 (0.00, 0.04)	0.01 (0.00, 0.04)	0.84 (0.51, 1.50)	0.87 (0.70, 1.11)	
	20	0.01 (0.00, 0.04)	0.01 (0.00, 0.04)	0.03 (0.01, 0.08)	0.84 (0.51, 1.51)	0.87 (0.70, 1.11)	
	30	0.00 (0.00, 0.03)	0.03 (0.01, 0.07)	0.11 (0.06, 0.19)	0.84 (0.51, 1.52)	0.88 (0.71, 1.13)	
	40	0.03 (0.01, 0.06)	0.11 (0.06, 0.19)	0.29 (0.18, 0.44)	0.86 (0.52, 1.55)	0.90 (0.72, 1.15)	
	50	0.08 (0.04, 0.16)	0.27 (0.17, 0.42)	0.63 (0.43, 0.91)	0.86 (0.51, 1.57)	0.91 (0.73, 1.18)	
	60	0.20 (0.11, 0.34)	0.58 (0.37, 0.86)	0.65 (0.42, 0.99)	0.82 (0.46, 1.57)	0.90 (0.71, 1.18)	
	70	0.43 (0.25, 0.70)	0.52 (0.31, 0.86)	- (- , -)	0.71 (0.34, 1.56)	0.85 (0.64, 1.16)	
	80	0.12 (0.02, 0.41)	- (- , -)	- (- , -)	0.37 (0.04, 1.50)	0.67 (0.44, 1.07)	
Hispanic ^b	0	0.00 (0.00, 0.01)	0.00 (0.00, 0.01)	0.01 (0.00, 0.01)	0.77 (0.70, 0.85)	0.80 (0.75, 0.85)	
	10	0.00 (0.00, 0.00)	0.00 (0.00, 0.01)	0.01 (0.00, 0.01)	0.77 (0.71, 0.85)	0.80 (0.76, 0.86)	
	20	0.00 (0.00, 0.00)	0.01 (0.00, 0.01)	0.02 (0.02, 0.03)	0.77 (0.71, 0.85)	0.81 (0.76, 0.86)	
	30	0.00 (0.00, 0.01)	0.02 (0.02, 0.02)	0.09 (0.08, 0.10)	0.77 (0.71, 0.85)	0.81 (0.76, 0.86)	
	40	0.02 (0.01, 0.02)	0.09 (0.07, 0.10)	0.26 (0.23, 0.29)	0.77 (0.71, 0.86)	0.81 (0.76, 0.86)	
	50	0.07 (0.06, 0.08)	0.25 (0.22, 0.27)	0.52 (0.48, 0.57)	0.77 (0.70, 0.85)	0.81 (0.76, 0.86)	
	60	0.18 (0.16, 0.21)	0.47 (0.42, 0.51)	0.67 (0.61, 0.73)	0.72 (0.66, 0.81)	0.78 (0.73, 0.84)	
	70	0.31 (0.28, 0.35)	0.53 (0.47, 0.59)	- (- , -)	0.59 (0.52, 0.68)	0.70 (0.65, 0.75)	
	80	0.27 (0.23, 0.33)	- (- , -)	- (- , -)	0.35 (0.29, 0.44)	0.52 (0.46, 0.58)	

Devcan Version 7.0.0, April 2008, National Cancer Institute (<http://srab.cancer.gov/devcan/>).

Source: Incidence data are from the SEER 17 areas (San Francisco, Connecticut, Detroit, Hawaii, Iowa, New Mexico, Seattle, Utah, Atlanta, San Jose-Monterey, Los Angeles, Alaska Native Registry, Rural Georgia, California excluding SF/SJM/LA, Kentucky, Louisiana and New Jersey). Mortality data are from the NCHS public use data file for the total US.

^a Underlying incidence and mortality data for American Indian/Alaska Native are based on the CHSDA (Contract Health Service Delivery Area) counties.

^b Hispanic is not mutually exclusive from whites, blacks, Asian/Pacific Islanders, and American Indians/Alaska Natives. Underlying incidence data for Hispanics are based on NHIA and exclude cases from the Alaska Native Registry and Kentucky. Underlying mortality data for Hispanics exclude deaths from Minnesota, New Hampshire and North Dakota.

- Statistic could not be calculated.

A percent or confidence interval value of 0.00 represents a value that is below 0.005.

Table XIV-10
LIVER AND INTRAHEPATIC BILE DUCT CANCER (Invasive)

SEER INCIDENCE AND U.S. MORTALITY
AGE-ADJUSTED RATES AND TRENDS^a
By Race/Ethnicity and Sex

SEER Incidence	Rate 2001-2005 ^b			Seer 13 Areas ^c Trend 1996-2005 AAPC (%)			SEER 9 Areas ^d Trend 1996-2005 AAPC (%)		
	Rate per 100,000 persons			Total Males Females			Total Males Females		
	Total	Males	Females	Total	Males	Females	Total	Males	Females
RACE/ETHNICITY									
All Races	6.4	9.9	3.5	2.5*	3.1*	1.7*	2.4*	2.4*	1.5*
White	5.4	8.2	2.9	2.4*	3.1*	1.2*	2.2*	2.2*	0.8
White Hispanic ^e	10.3	15.5	5.9	2.5*	2.3*	2.3*	-	-	-
White Non-Hispanic ^e	4.7	7.3	2.6	2.0*	2.7*	0.6	-	-	-
Black	8.0	13.2	4.0	4.0*	4.4*	2.8*	3.0*	3.2*	2.5*
Asian/Pacific Islander	14.3	21.7	8.3	0.7*	0.7	0.7	-	-	-
Amer Ind/Alaska Nat ^f	9.9	14.4	6.3	1.3	-	-	-	-	-
Hispanic ^e	10.0	15.0	5.8	2.7*	2.5*	2.5*	-	-	-
U.S. Mortality ^g									
	Rate 2001-2005			Trend 1996-2005 ^h					
	Rate per 100,000 persons			AAPC (%)					
	Total	Males	Females	Total	Males	Females			
RACE/ETHNICITY									
All Races	5.0	7.3	3.1	1.8*	2.2*	1.1*			
White	4.6	6.7	2.9	1.8*	2.2*	0.9			
White Hispanic ^e	8.1	11.5	5.3	1.9*	1.6*	1.8*			
White Non-Hispanic ^e	4.3	6.3	2.7	1.6*	2.1*	0.5			
Black	6.7	10.3	3.9	1.7*	2.0*	0.8*			
Asian/Pacific Islander	10.4	15.2	6.6	-0.6*	-0.8*	0.0			
Amer Ind/Alaska Nat									
Total U.S.	6.3	8.0	4.7	2.0*	0.9	2.9			
CHSDA Counties	8.5	10.6	6.6	2.2*	0.8	3.3*			
Non-CHSDA Counties	3.4	4.8	2.1	-	-	-			
Hispanic ^e	7.8	11.1	5.1	1.8*	1.6*	1.8*			

The AAPC is the Average Annual Percent Change over the time interval. The AAPCs are calculated by the Joinpoint Regression Program Version 3.3, April 2008, National Cancer Institute.

- Statistic not shown. Rate based on less than 16 cases for the time interval. Trend based on less than 10 cases for at least one year within the time interval.

a Rates are age-adjusted to the 2000 US Std Population (19 age groups - Census P25-1130). Trends are based on rates age-adjusted to the 2000 US Std Population (19 age groups - Census P25-1130).

b Incidence data used in calculating the 2001-2005 rates are from the SEER 17 areas (San Francisco, Connecticut, Detroit, Hawaii, Iowa, New Mexico, Seattle, Utah, Atlanta, San Jose-Monterey, Los Angeles, Alaska Native Registry, Rural Georgia, California excluding SF/SJM/LA, Kentucky, Louisiana and New Jersey).

c The SEER 13 areas are San Francisco, Connecticut, Detroit, Hawaii, Iowa, New Mexico, Seattle, Utah, Atlanta, San Jose-Monterey, Los Angeles, Alaska Native Registry and Rural Georgia. The 1996-2005 AAPC trends are based on a Joinpoint analysis using diagnosis years 1992-2005.

d The SEER 9 areas are San Francisco, Connecticut, Detroit, Hawaii, Iowa, New Mexico, Seattle, Utah, and Atlanta. The 1996-2005 AAPC trends are based on a Joinpoint analysis using diagnosis years 1975-2005.

e Hispanic and Non-Hispanic are not mutually exclusive from whites, blacks, Asian/Pacific Islanders, and American Indians/Alaska Natives. Incidence data for Hispanics and Non-Hispanics are based on NHIA and exclude cases from the Alaska Native Registry and Kentucky. The 2001-2005 Hispanic and Non-Hispanic death rates exclude deaths from Minnesota, New Hampshire and North Dakota. The 1996-2005 Hispanic and Non-Hispanic mortality trends exclude deaths from Connecticut, Maine, Maryland, Minnesota, New Hampshire, New York, North Dakota, Oklahoma and Vermont.

f Incidence data for American Indian/Alaska Native are based on the CHSDA(Contract Health Service Delivery Area) counties.

g US Mortality Files, National Center for Health Statistics, CDC.

h The 1996-2005 mortality AAPCs are based on a Joinpoint analysis using years of death 1992-2005.

* The APC is significantly different from zero (p<.05).

Table XIV-11
LIVER AND INTRAHEPATIC BILE DUCT CANCER (Invasive)

AGE-ADJUSTED SEER INCIDENCE RATES^a
By Registry, Race and Sex

	All Races			Whites			Blacks		
	Total	Males	Females	Total	Males	Females	Total	Males	Females
<u>SEER INCIDENCE RATES^a, 2001-2005</u>									
REGISTRY									
Atlanta & Rural Georgia	4.7	7.4	2.5	3.6	5.7	1.9	5.9	9.5	3.3
Atlanta	4.8	7.5	2.6	3.6	5.7	2.0	6.1	9.8	3.5
Rural Georgia	3.1	5.4	-	-	-	-	-	-	-
California	7.5	11.3	4.2	6.1	9.2	3.4	9.4	14.6	5.2
Greater Bay Area	8.4	13.0	4.5	6.0	9.2	3.1	11.1	16.9	6.2
San Francisco-Oakland	8.6	13.1	4.5	5.9	9.1	3.1	11.2	17.4	6.0
San Jose-Monterey	8.2	12.6	4.3	6.1	9.5	3.1	10.4	14.5	-
Los Angeles	8.3	12.3	5.1	6.7	9.8	4.2	8.9	14.5	4.8
Greater California	6.7	10.2	3.7	5.8	8.9	3.1	8.8	13.4	4.9
Connecticut	5.2	8.6	2.5	4.9	8.1	2.3	7.3	12.4	3.5
Detroit	6.1	9.5	3.4	5.2	7.9	3.0	8.8	15.0	4.2
Hawaii	9.6	14.1	5.6	6.0	10.0	2.2	-	-	-
Iowa	3.7	5.6	2.2	3.5	5.2	2.1	8.4	-	-
Kentucky	4.3	6.6	2.5	4.2	6.4	2.5	5.7	9.4	2.5
Louisiana	6.3	10.4	3.1	5.6	9.0	2.8	7.8	13.5	3.7
New Jersey	6.0	9.6	3.1	5.5	8.7	2.9	7.2	12.1	3.6
New Mexico	7.1	10.6	4.1	6.8	10.4	3.7	-	-	-
Seattle-Puget Sound	6.1	9.2	3.5	5.0	7.5	2.8	9.7	16.7	-
Utah	3.0	4.3	1.7	2.6	3.8	1.6	-	-	-
9 SEER Areas ^b	6.0	9.2	3.3	4.8	7.4	2.6	8.2	13.5	4.1
11 SEER Areas ^b	6.7	10.1	3.7	5.3	8.0	3.0	8.5	13.9	4.3
13 SEER Areas ^b	6.7	10.1	3.7	5.3	8.0	2.9	8.4	13.8	4.3
17 SEER Areas ^b	6.4	9.9	3.5	5.4	8.2	2.9	8.0	13.2	4.0

^a Rates are per 100,000 and are age-adjusted to the 2000 US Std Population (19 age groups - Census P25-1130)

^b The SEER 9 areas are San Francisco, Connecticut, Detroit, Hawaii, Iowa, New Mexico, Seattle, Utah and Atlanta.

The SEER 11 areas comprise the SEER 9 areas plus San Jose-Monterey and Los Angeles.

The SEER 13 areas comprise the SEER 11 areas plus the Alaska Native Registry and Rural Georgia.

The SEER 17 areas comprise the SEER 13 areas plus California excluding SF/SJM/LA, Kentucky, Louisiana and New Jersey.

- Statistic not shown. Rate based on less than 16 cases for the time interval.

Table XIV-12
LIVER AND INTRAHEPATIC BILE DUCT CANCER (Invasive)

AGE-ADJUSTED SEER DEATH RATES^a

By Registry, Race and Sex

	All Races			Whites			Blacks		
	Total	Males	Females	Total	Males	Females	Total	Males	Females
<u>SEER DEATH RATES^a, 2001-2005</u>									
REGISTRY									
Atlanta & Rural Georgia	4.3	6.4	2.7	3.6	5.5	2.3	4.6	6.8	3.0
Atlanta	4.4	6.5	2.7	3.6	5.5	2.3	4.7	7.0	3.0
Rural Georgia	3.0	-	-	-	-	-	-	-	-
California	6.2	8.9	4.0	5.3	7.5	3.4	8.0	11.8	4.9
Greater Bay Area	6.6	9.6	4.1	5.1	7.1	3.2	9.2	13.5	5.5
San Francisco-Oakland	6.8	9.9	4.1	5.0	7.2	3.1	9.4	14.1	5.5
San Jose-Monterey	6.3	9.1	4.0	5.1	7.1	3.3	7.5	-	-
Los Angeles	7.1	10.0	4.8	6.0	8.3	4.2	8.1	12.2	5.1
Greater California	5.6	8.0	3.5	5.1	7.3	3.2	7.1	10.2	4.3
Connecticut	4.5	6.9	2.7	4.4	6.7	2.7	5.1	8.8	-
Detroit	5.4	7.8	3.5	4.7	6.7	3.3	7.2	11.8	3.9
Hawaii	7.4	10.6	4.6	5.1	7.0	3.1	-	-	-
Iowa	3.5	5.1	2.3	3.4	4.8	2.3	-	-	-
Kentucky	4.8	6.9	3.3	4.7	6.6	3.2	6.2	10.0	3.4
Louisiana	6.7	10.0	4.1	6.1	8.8	3.9	8.2	13.5	4.4
New Jersey	4.9	7.4	3.0	4.6	6.8	2.9	6.3	10.5	3.4
New Mexico	6.2	8.6	4.0	6.0	8.5	3.8	-	-	-
Seattle-Puget Sound	5.4	7.7	3.4	4.6	6.6	2.9	6.8	11.1	-
Utah	3.3	4.4	2.3	3.0	4.0	2.1	-	-	-
9 SEER Areas ^b	5.2	7.5	3.3	4.4	6.3	2.8	6.6	10.4	3.7
11 SEER Areas ^b	5.7	8.2	3.6	4.8	6.8	3.1	7.0	10.9	4.1
13 SEER Areas ^b	5.7	8.1	3.7	4.8	6.7	3.1	6.9	10.8	4.0
17 SEER Areas ^b	5.6	8.1	3.5	4.9	7.0	3.2	7.0	11.1	4.0
Total U.S.	5.0	7.3	3.1	4.6	6.7	2.9	6.7	10.3	3.9

^a US Mortality Files, National Center for Health Statistics, Centers for Disease Control and Prevention. Rates are per 100,000 and are age-adjusted to the 2000 US Std Population (19 age groups - Census P25-1130).

^b The SEER 9 areas are San Francisco, Connecticut, Detroit, Hawaii, Iowa, New Mexico, Seattle, Utah and Atlanta.

The SEER 11 areas comprise the SEER 9 areas plus San Jose-Monterey and Los Angeles.

The SEER 13 areas comprise the SEER 11 areas plus the Alaska Native Registry and Rural Georgia.

The SEER 17 areas comprise the SEER 13 areas plus California excluding SF/SJM/LA, Kentucky, Louisiana and New Jersey.

- Statistic not shown. Rate based on less than 16 cases for the time interval.

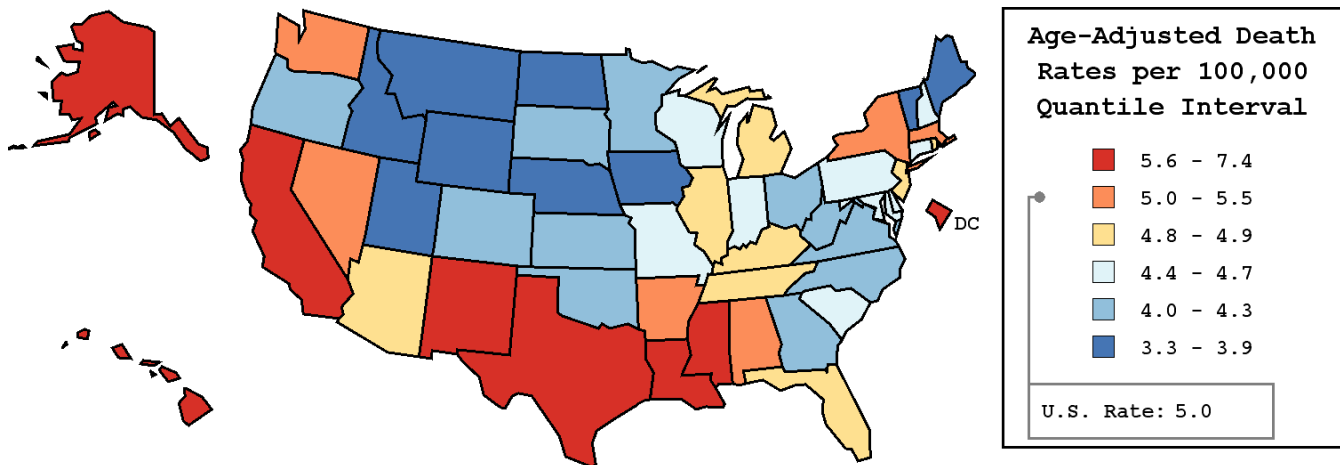
Table XIV-13
LIVER AND INTRAHEPATIC BILE DUCT CANCER (Invasive)

AVERAGE ANNUAL AGE-ADJUSTED CANCER DEATH^a RATES BY STATE, ALL RACES, 2001-2005

Males and Females

State	Rate	SE	Rank	PD
TOTAL U.S.	5.0	0.02		
High Five States				
Hawaii	7.4 ^b	0.33	(01)	48.0 ^c
Louisiana	6.7 ^b	0.18	(02)	34.0 ^c
Texas	6.6 ^b	0.08	(03)	32.0 ^c
Alaska	6.4	0.61	(04)	28.0 ^c
California	6.2 ^b	0.06	(05)	24.0 ^c
Low Five States				
Montana	3.6 ^b	0.27	(47)	-28.0 ^c
Iowa	3.5 ^b	0.15	(48)	-30.0 ^c
Nebraska	3.5 ^b	0.20	(49)	-30.0 ^c
Vermont	3.5 ^b	0.32	(50)	-30.0 ^c
Utah	3.3 ^b	0.19	(51)	-34.0 ^c

State	Rate	SE	Rank	PD	State	Rate	SE	Rank	PD
Alabama	5.2	0.15	(12)	4.0	Montana	3.6 ^b	0.27	(47)	-28.0 ^c
Alaska	6.4	0.61	(04)	28.0 ^c	Nebraska	3.5 ^b	0.20	(49)	-30.0 ^c
Arizona	4.8	0.13	(19)	-4.0	Nevada	5.4	0.23	(10)	8.0
Arkansas	5.5	0.19	(09)	10.0	New Hampshire	4.5	0.26	(30)	-10.0
California	6.2 ^b	0.06	(05)	24.0 ^c	New Jersey	4.9	0.10	(16)	-2.0
Colorado	4.3 ^b	0.15	(33)	-14.0	New Mexico	6.2 ^b	0.26	(06)	24.0 ^c
Connecticut	4.5	0.15	(28)	-10.0	New York	5.0	0.07	(13)	0.0
Delaware	4.5	0.33	(29)	-10.0	North Carolina	4.3 ^b	0.10	(32)	-14.0
D.C.	5.8	0.45	(08)	16.0 ^c	North Dakota	3.7 ^b	0.32	(45)	-26.0 ^c
Florida	4.8	0.07	(18)	-4.0	Ohio	4.3 ^b	0.08	(36)	-14.0
Georgia	4.3 ^b	0.11	(34)	-14.0	Oklahoma	4.3 ^b	0.15	(38)	-14.0
Hawaii	7.4 ^b	0.33	(01)	48.0 ^c	Oregon	4.2 ^b	0.15	(40)	-16.0 ^c
Idaho	3.7 ^b	0.24	(46)	-26.0 ^c	Pennsylvania	4.6 ^b	0.08	(27)	-8.0
Illinois	4.9	0.09	(15)	-2.0	Rhode Island	4.8	0.28	(21)	-4.0
Indiana	4.5 ^b	0.12	(31)	-10.0	South Carolina	4.7	0.15	(24)	-6.0
Iowa	3.5 ^b	0.15	(48)	-30.0 ^c	South Dakota	4.1	0.31	(41)	-18.0 ^c
Kansas	4.0 ^b	0.17	(42)	-20.0 ^c	Tennessee	4.9	0.13	(17)	-2.0
Kentucky	4.8	0.15	(20)	-4.0	Texas	6.6 ^b	0.08	(03)	32.0 ^c
Louisiana	6.7 ^b	0.18	(02)	34.0 ^c	Utah	3.3 ^b	0.19	(51)	-34.0 ^c
Maine	3.9 ^b	0.23	(44)	-22.0 ^c	Vermont	3.5 ^b	0.32	(50)	-30.0 ^c
Maryland	4.7	0.13	(25)	-6.0	Virginia	4.3 ^b	0.11	(37)	-14.0
Massachusetts	5.0	0.12	(14)	0.0	Washington	5.2	0.13	(11)	4.0
Michigan	4.8	0.10	(22)	-4.0	West Virginia	4.3 ^b	0.20	(35)	-14.0
Minnesota	4.3 ^b	0.13	(39)	-14.0	Wisconsin	4.7	0.13	(26)	-6.0
Mississippi	6.1 ^b	0.21	(07)	22.0 ^c	Wyoming	3.9	0.39	(43)	-22.0 ^c
Missouri	4.7	0.12	(23)	-6.0					



^a US Mortality Files, National Center for Health Statistics, Centers for Disease Control and Prevention. Rates are per 100,000 and are age-adjusted to the 2000 US Std Population (19 age groups - Census P25-1130).
^b Difference between state rate and total U.S. rate is statistically significant ($p \leq .0002$).
^c Absolute percent difference between state rate and total U.S. rate is 15% or more.
SE Standard error of the rate.
PD Percent difference between state rate and total U.S. rate.

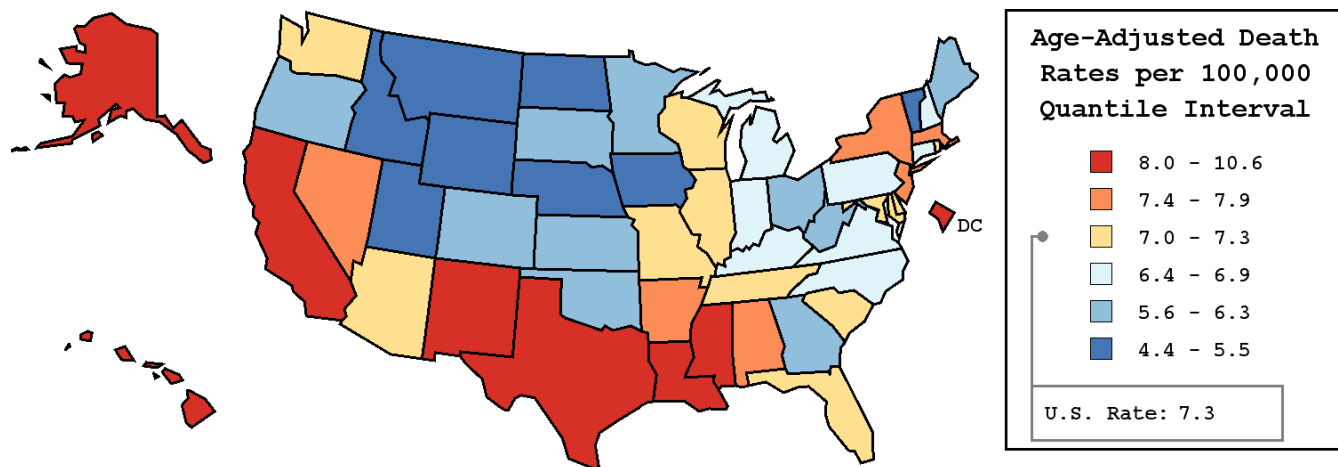
Table XIV-14
LIVER AND INTRAHEPATIC BILE DUCT CANCER (Invasive)

AVERAGE ANNUAL AGE-ADJUSTED CANCER DEATH^a RATES BY STATE, ALL RACES, 2001-2005

Males

State	Rate	SE	Rank	PD
TOTAL U.S.	7.3	0.03		
High Five States				
Hawaii	10.6 ^b	0.59	(01)	45.2 ^c
Louisiana	10.0 ^b	0.34	(02)	37.0 ^c
Texas	9.8 ^b	0.16	(03)	34.2 ^c
Mississippi	9.0 ^b	0.39	(04)	23.3 ^c
California	8.9 ^b	0.11	(05)	21.9 ^c
Low Five States				
Montana	5.1 ^b	0.47	(47)	-30.1 ^c
Iowa	5.1 ^b	0.27	(48)	-30.1 ^c
North Dakota	4.8 ^b	0.55	(49)	-34.2 ^c
Wyoming	4.6 ^b	0.63	(50)	-37.0 ^c
Utah	4.4 ^b	0.34	(51)	-39.7 ^c

State	Rate	SE	Rank	PD	State	Rate	SE	Rank	PD
Alabama	7.5	0.28	(11)	2.7	Montana	5.1 ^b	0.47	(47)	-30.1 ^c
Alaska	8.1	1.02	(08)	11.0	Nebraska	5.1 ^b	0.36	(46)	-30.1 ^c
Arizona	7.0	0.23	(24)	-4.1	Nevada	7.4	0.39	(13)	1.4
Arkansas	7.4	0.34	(12)	1.4	New Hampshire	6.8	0.50	(29)	-6.8
California	8.9 ^b	0.11	(05)	21.9 ^c	New Jersey	7.4	0.20	(14)	1.4
Colorado	5.8 ^b	0.27	(42)	-20.5 ^c	New Mexico	8.6	0.45	(07)	17.8 ^c
Connecticut	6.9	0.29	(26)	-5.5	New York	7.6	0.13	(10)	4.1
Delaware	7.3	0.62	(17)	0.0	North Carolina	6.5 ^b	0.19	(31)	-11.0
D.C.	8.7	0.85	(06)	19.2 ^c	North Dakota	4.8 ^b	0.55	(49)	-34.2 ^c
Florida	7.3	0.12	(16)	0.0	Ohio	6.3 ^b	0.16	(34)	-13.7
Georgia	6.3 ^b	0.21	(35)	-13.7	Oklahoma	6.1 ^b	0.28	(37)	-16.4 ^c
Hawaii	10.6 ^b	0.59	(01)	45.2 ^c	Oregon	5.9 ^b	0.26	(41)	-19.2 ^c
Idaho	5.2 ^b	0.42	(45)	-28.8 ^c	Pennsylvania	6.9	0.15	(27)	-5.5
Illinois	7.2	0.17	(19)	-1.4	Rhode Island	7.2	0.53	(20)	-1.4
Indiana	6.4 ^b	0.22	(33)	-12.3	South Carolina	7.2	0.29	(18)	-1.4
Iowa	5.1 ^b	0.27	(48)	-30.1 ^c	South Dakota	5.9	0.56	(39)	-19.2 ^c
Kansas	5.9 ^b	0.31	(40)	-19.2 ^c	Tennessee	7.0	0.24	(23)	-4.1
Kentucky	6.9	0.28	(28)	-5.5	Texas	9.8 ^b	0.16	(03)	34.2 ^c
Louisiana	10.0 ^b	0.34	(02)	37.0 ^c	Utah	4.4 ^b	0.34	(51)	-39.7 ^c
Maine	5.6 ^b	0.42	(43)	-23.3 ^c	Vermont	5.5	0.62	(44)	-24.7 ^c
Maryland	7.0	0.25	(25)	-4.1	Virginia	6.5 ^b	0.21	(32)	-11.0
Massachusetts	7.9	0.23	(09)	8.2	Washington	7.3	0.24	(15)	0.0
Michigan	6.8	0.18	(30)	-6.8	West Virginia	5.9 ^b	0.36	(38)	-19.2 ^c
Minnesota	6.2 ^b	0.24	(36)	-15.1 ^c	Wisconsin	7.0	0.24	(22)	-4.1
Mississippi	9.0 ^b	0.39	(04)	23.3 ^c	Wyoming	4.6 ^b	0.63	(50)	-37.0 ^c
Missouri	7.2	0.24	(21)	-1.4					



^a US Mortality Files, National Center for Health Statistics, Centers for Disease Control and Prevention. Rates are per 100,000 and are age-adjusted to the 2000 US Std Population (19 age groups - Census P25-1130).
^b Difference between state rate and total U.S. rate is statistically significant ($p \leq .0002$).
^c Absolute percent difference between state rate and total U.S. rate is 15% or more.
SE Standard error of the rate.
PD Percent difference between state rate and total U.S. rate.

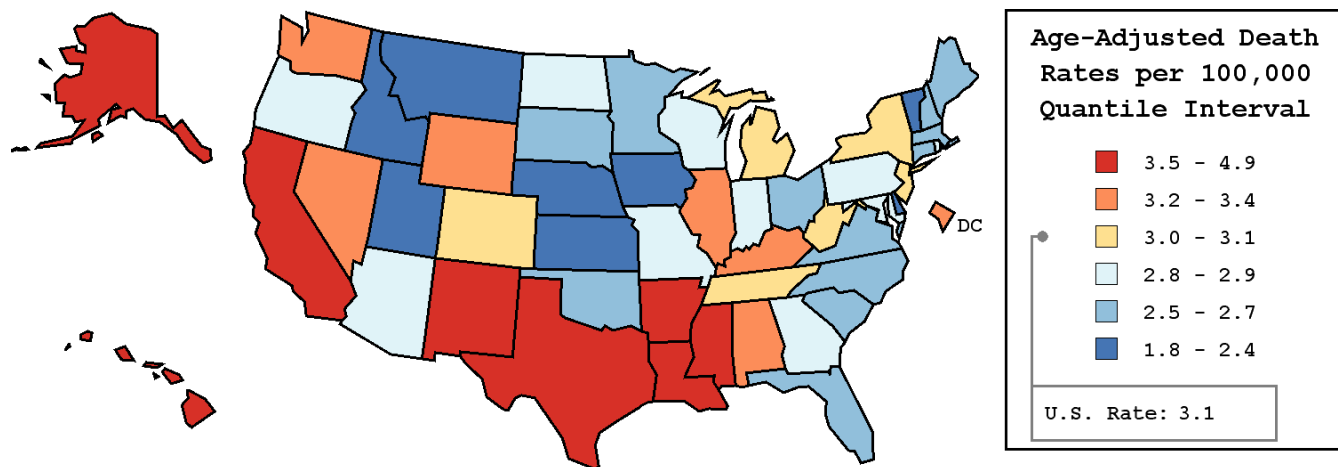
Table XIV-15
LIVER AND INTRAHEPATIC BILE DUCT CANCER (Invasive)

AVERAGE ANNUAL AGE-ADJUSTED CANCER DEATH^a RATES BY STATE, ALL RACES, 2001-2005

Females

State	Rate	SE	Rank	PD
TOTAL U.S.	3.1	0.02		
High Five States				
Alaska	4.9	0.73	(01)	58.1 ^c
Hawaii	4.6 ^b	0.35	(02)	48.4 ^c
Louisiana	4.1 ^b	0.18	(03)	32.3 ^c
Texas	4.1 ^b	0.09	(04)	32.3 ^c
New Mexico	4.0	0.28	(05)	29.0 ^c
Low Five States				
Utah	2.3 ^b	0.22	(47)	-25.8 ^c
Iowa	2.3 ^b	0.16	(48)	-25.8 ^c
Delaware	2.2	0.30	(49)	-29.0 ^c
Nebraska	2.1 ^b	0.20	(50)	-32.3 ^c
Vermont	1.8 ^b	0.31	(51)	-41.9 ^c

State	Rate	SE	Rank	PD	State	Rate	SE	Rank	PD
Alabama	3.4	0.16	(10)	9.7	Montana	2.4	0.29	(46)	-22.6 ^c
Alaska	4.9	0.73	(01)	58.1 ^c	Nebraska	2.1 ^b	0.20	(50)	-32.3 ^c
Arizona	2.9	0.14	(23)	-6.5	Nevada	3.4	0.25	(11)	9.7
Arkansas	3.8	0.21	(07)	22.6 ^c	New Hampshire	2.6	0.27	(40)	-16.1 ^c
California	4.0 ^b	0.07	(06)	29.0 ^c	New Jersey	3.0	0.11	(20)	-3.2
Colorado	3.0	0.17	(18)	-3.2	New Mexico	4.0	0.28	(05)	29.0 ^c
Connecticut	2.7	0.16	(33)	-12.9	New York	3.0	0.07	(19)	-3.2
Delaware	2.2	0.30	(49)	-29.0 ^c	North Carolina	2.6 ^b	0.10	(39)	-16.1 ^c
D.C.	3.4	0.45	(12)	9.7	North Dakota	2.9	0.38	(22)	-6.5
Florida	2.7 ^b	0.07	(32)	-12.9	Ohio	2.7 ^b	0.09	(36)	-12.9
Georgia	2.8	0.12	(29)	-9.7	Oklahoma	2.7	0.16	(35)	-12.9
Hawaii	4.6 ^b	0.35	(02)	48.4 ^c	Oregon	2.8	0.17	(30)	-9.7
Idaho	2.4	0.26	(44)	-22.6 ^c	Pennsylvania	2.8 ^b	0.08	(31)	-9.7
Illinois	3.2	0.09	(15)	3.2	Rhode Island	2.9	0.29	(26)	-6.5
Indiana	2.9	0.13	(24)	-6.5	South Carolina	2.7	0.15	(34)	-12.9
Iowa	2.3 ^b	0.16	(48)	-25.8 ^c	South Dakota	2.5	0.33	(43)	-19.4 ^c
Kansas	2.4 ^b	0.18	(45)	-22.6 ^c	Tennessee	3.1	0.13	(17)	0.0
Kentucky	3.3	0.16	(13)	6.5	Texas	4.1 ^b	0.09	(04)	32.3 ^c
Louisiana	4.1 ^b	0.18	(03)	32.3 ^c	Utah	2.3 ^b	0.22	(47)	-25.8 ^c
Maine	2.6	0.25	(41)	-16.1 ^c	Vermont	1.8 ^b	0.31	(51)	-41.9 ^c
Maryland	2.9	0.14	(25)	-6.5	Virginia	2.5 ^b	0.11	(42)	-19.4 ^c
Massachusetts	2.6 ^b	0.11	(38)	-16.1 ^c	Washington	3.4	0.15	(09)	9.7
Michigan	3.1	0.10	(16)	0.0	West Virginia	3.0	0.22	(21)	-3.2
Minnesota	2.7	0.14	(37)	-12.9	Wisconsin	2.8	0.13	(28)	-9.7
Mississippi	3.8	0.22	(08)	22.6 ^c	Wyoming	3.2	0.49	(14)	3.2
Missouri	2.8	0.13	(27)	-9.7					



^a US Mortality Files, National Center for Health Statistics, Centers for Disease Control and Prevention. Rates are per 100,000 and are age-adjusted to the 2000 US Std Population (19 age groups - Census P25-1130).
^b Difference between state rate and total U.S. rate is statistically significant ($p \leq .0002$).
^c Absolute percent difference between state rate and total U.S. rate is 15% or more.
SE Standard error of the rate.
PD Percent difference between state rate and total U.S. rate.

Table XIV-16
LIVER AND INTRAHEPATIC BILE DUCT CANCER (Invasive)

Estimated United States Cancer Prevalence Counts^a on January 1, 2005
By Race/Ethnicity, Sex and Years Since Diagnosis

Years Since Diagnosis	0 to <5	5 to <10	10 to <15	15 to <20	20 to <25	25 to <30	0 to <15 ^e	0 to <30 ^e	>=30 ^g	Complete ^h
<u>Race/Sex</u>										
All Races ^b	15,981	2,875	1,140	765	334	164	19,996	21,259	383	21,642
Males	11,073	1,734	687	296	146	87	13,494	14,023	75	14,098
Females	4,908	1,141	453	469	188	77	6,502	7,236	308	7,544
White ^b	11,560	2,156	866	625	277	98	14,582	15,582	339	15,921
Males	7,953	1,272	515	209	122	58	9,740	10,128	118 ⁱ	10,246
Females	3,607	884	351	416	155	40	4,842	5,454	221 ⁱ	5,675
Black ^b	2,210	228	117	72	35	44	2,556	2,707	+	+
Males	1,529	141	70	37	13	21	1,740	1,811	+	+
Females	681	87	47	35	22	23	816	896	+	+
Asian/Pacific Islander ^c	1,976	407	129	+	+	+	2,511	+	+	+
Males	1,385	290	83	+	+	+	1,758	+	+	+
Females	591	117	46	+	+	+	753	+	+	+
Hispanic ^d	2,119	345	197	+	+	+	2,661	+	+	+
Males	1,456	193	145	+	+	+	1,794	+	+	+
Females	663	152	52	+	+	+	867	+	+	+

Estimated prevalence percent^a on January 1, 2005, of the SEER 11 population diagnosed in the previous 15 years
By Age at Prevalence, Race/Ethnicity and Sex

Age at Prevalence	Age Specific (Crude)										Age-Adjusted ^f
	All Ages	0-9	10-19	20-29	30-39	40-49	50-59	60-69	70-79	80+	All Ages
<u>Race/Sex</u>											
All Races ^c	0.0082%	0.0019%	0.0012%	0.0007%	0.0015%	0.0048%	0.0182%	0.0277%	0.0374%	0.0216%	0.0085%
Males	0.0113%	0.0018%	0.0014%	0.0006%	0.0020%	0.0069%	0.0292%	0.0405%	0.0547%	0.0326%	0.0124%
Females	0.0052%	0.0020%	0.0011%	0.0007%	0.0009%	0.0027%	0.0077%	0.0161%	0.0241%	0.0155%	0.0051%
White ^c	0.0064%	0.0020%	0.0013%	0.0006%	0.0011%	0.0037%	0.0151%	0.0192%	0.0247%	0.0152%	0.0063%
Males	0.0087%	0.0018%	0.0015%	0.0006%	0.0012%	0.0049%	0.0244%	0.0278%	0.0356%	0.0219%	0.0090%
Females	0.0041%	0.0022%	0.0012%	0.0006%	0.0009%	0.0024%	0.0061%	0.0113%	0.0162%	0.0115%	0.0039%
Black ^c	0.0066%	-	0.0008%	0.0013%	0.0021%	0.0039%	0.0217%	0.0283%	0.0327%	0.0175%	0.0082%
Males	0.0097%	-	-	-	0.0033%	0.0055%	0.0368%	0.0464%	0.0505%	0.0290%	0.0131%
Females	0.0038%	-	-	0.0017%	-	0.0025%	0.0093%	0.0142%	0.0210%	0.0119%	0.0045%
Asian/Pacific Islander ^c	0.0209%	0.0029%	-	-	0.0031%	0.0125%	0.0341%	0.0817%	0.1222%	0.0778%	0.0225%
Males	0.0299%	0.0028%	-	-	0.0054%	0.0208%	0.0552%	0.1253%	0.1868%	0.1160%	0.0348%
Females	0.0125%	0.0030%	-	-	-	0.0050%	0.0157%	0.0451%	0.0753%	0.0524%	0.0127%
Hispanic ^d	0.0062%	0.0018%	0.0014%	0.0006%	0.0009%	0.0052%	0.0249%	0.0388%	0.0443%	0.0277%	0.0106%
Males	0.0082%	0.0018%	0.0017%	0.0007%	0.0012%	0.0079%	0.0403%	0.0556%	0.0563%	0.0398%	0.0152%
Females	0.0042%	0.0018%	0.0010%	-	-	0.0024%	0.0104%	0.0247%	0.0357%	0.0208%	0.0067%

^a US 2005 cancer prevalence counts are based on 2005 cancer prevalence proportions from the SEER registries and 1/1/2005 US population estimates based on the average of 2004 and 2005 population estimates from the US Bureau of the Census. Prevalence was calculated using the First Malignant Primary Only for a person.

^{b c d} Statistics based on (b) SEER 9 Areas (c) SEER 11 Areas and Rural Georgia (d) NHIA for Hispanic for SEER 11 Areas and Rural Georgia.

^e Maximum limited-duration prevalence: 30 years for 1975-2005 SEER 9 data; 15 years for 1990-2005 SEER 11 data (used to calculate prevalence for Hispanics and Asian Pacific Islanders).

^f Percentages are age-adjusted to the 2000 US Standard Population (19 age groups - Census P25-1130) by 5-year age groups.

^{g h i} (g) Cases diagnosed more than 30 years ago were estimated using the completeness index method (Capocaccia et. al. 1997, Merrill et. al. 2000). (h) Complete prevalence is obtained by summing 0 to <30 and >=30. (i) Age-specific completeness index was approximated using empirical data from historical Connecticut tumor registry.

- Statistic not shown. Statistic based on fewer than 5 cases estimated alive in SEER for the time interval.

+ Not available.

Table XIV-17

LIVER AND INTRAHEPATIC BILE DUCT CANCER(Invasive)

Percent Distribution and Counts by Histology among Histologically Confirmed Cases, 2001-2005
Both Sexes by Race

Histology ^a	All Races		White		Black		API		AI/AN		Hispanic ^b	
	Count	Percent	Count	Percent	Count	Percent	Count	Percent	Count	Percent	Count	Percent
Carcinoma (8010-8576)	15,824	96.9%	10,880	96.6%	1,832	98.0%	2,908	97.5%	110	93.2%	2,494	96.3%
Epidermoid carcinoma ^c (8170-8175)	12,402	76.0%	8,243	73.2%	1,527	81.7%	2,464	82.6%	92	78.0%	2,020	78.0%
Cholangiocarcinoma (8050,8140-8141, 8160-8161,8260,8440, 8480-8500,8570-8572)	2,407	14.7%	1,905	16.9%	193	10.3%	289	9.7%	-	-	330	12.7%
Intrahepatic cholangio- carcinoma (8160)	1,604	9.8%	1,264	11.2%	120	6.4%	203	6.8%	-	-	217	8.4%
Other (8050,8140-8141,8161, 8260,8440,8480-8500, 8570-8572)	803	4.9%	641	5.7%	73	3.9%	86	2.9%	-	-	113	4.4%
Other specific carcinomas ^d	368	2.3%	282	2.5%	44	2.4%	35	1.2%	-	-	42	1.6%
Unspecified, Carcinoma, NOS (8010-8011,8020-8022)	323	2.0%	232	2.1%	36	1.9%	51	1.7%	-	-	45	1.7%
Hepatoblastoma (8970)	167	1.0%	133	1.2%	-	-	18	0.6%	-	-	51	2.0%
Sarcoma ^e	158	1.0%	122	1.1%	-	-	26	0.9%	-	-	-	-
Haemangiosarcoma (9120-9133,9161)	102	0.6%	82	0.7%	-	-	16	0.5%	-	-	-	-
Other sarcomas ^f	56	0.3%	40	0.4%	-	-	-	-	-	-	-	-
Other specific types (8720-8790,8930-8936, 8950-8969,8971-9030, 9060-9110,9260-9365,9380-9539)	42	0.3%	33	0.3%	-	-	-	-	-	-	-	-
Unspecified (8000-8005)	132	0.8%	90	0.8%	16	0.9%	24	0.8%	-	-	19	0.7%
Total ^c	16,323	100.0%	11,258	100.0%	1,870	100.0%	2,983	100.0%	118	100.0%	2,591	100.0%

Source: SEER 17 areas (San Francisco, Connecticut, Detroit, Hawaii, Iowa, New Mexico, Seattle, Utah, Atlanta, San Jose-Monterey, Los Angeles, Alaska Native Registry, Rural Georgia, California excluding SF/SJM/LA, Kentucky, Louisiana and New Jersey). Percents may not sum to 100 due to rounding.

^a - Statistic not shown due to fewer than 16 cases during the time period.

^b - Excludes Kaposi Sarcoma, mesothelioma, lymphomas, leukemias, myelomas, lymphoreticular, and immunoproliferative diseases.

^c - Hispanic is not mutually exclusive from whites, blacks, Asian/Pacific Islanders, and American Indians/Alaska Natives.

^d - Underlying incidence data for Hispanics are based on NHIA and exclude cases from the Alaska Native Registry and Kentucky.

^e - Epidermoid carcinoma includes squamous, basal, and transitional cell carcinomas.

^f - Other specific carcinomas include histologies 8012-8015, 8030-8046, 8150-8155, 8177-8180, 8230-8249, 8508, 8510-8513, 8561-8562, 8575, 8580-8671.

^e - Sarcoma includes histologies 8680-8713, 8800-8921, 9040-9044, 9120-9136, 9150-9252, 9370-9373, 9540-9582.

^f - Other sarcomas include histologies 8680-8713, 8800-8921, 9040-9044, 9135-9136, 9150-9160, 9170-9252, 9370-9373, 9540-9582.

SEER Incidence and Delay Adjusted Incidence Rates^a Liver and Intrahepatic Bile Duct Cancer, by Race and Sex

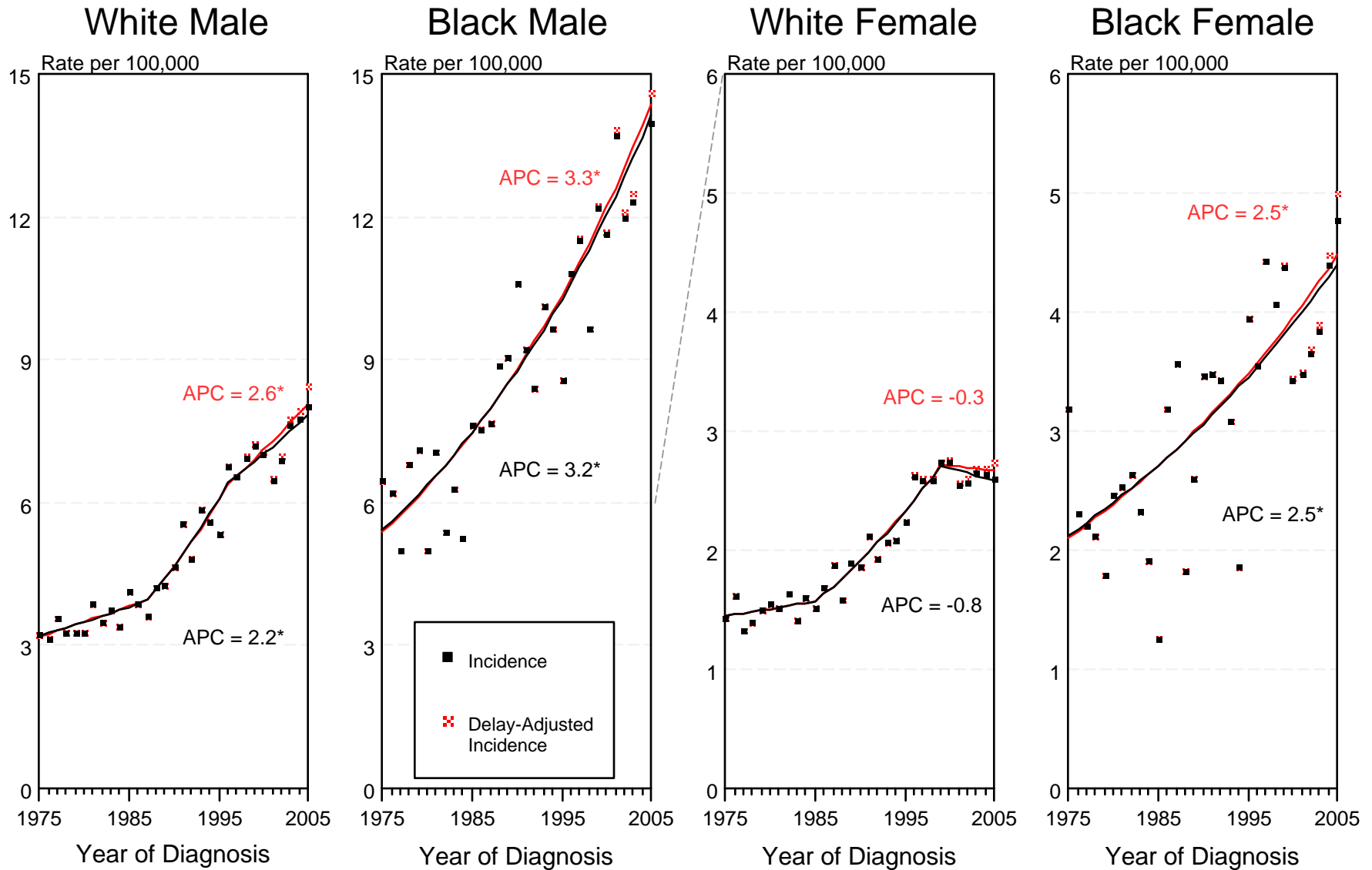


Figure XIV-1

^a Source: SEER 9 areas. Rates are age-adjusted to the 2000 US Std Population (19 age groups - Census P25-1103). Regression lines and APCs are calculated using the Joinpoint Regression Program Version 3.3.1, April 2008, National Cancer Institute. The APC is the Annual Percent Change for the regression line segments. The APC shown on the graph is for the most recent trend.

* The APC is significantly different from zero ($p < 0.05$).

SEER Incidence and US Death Rates^a Liver and Intrahepatic Bile Duct Cancer, Both Sexes

Joinpoint Analyses for Whites and Blacks from 1975-2005
and for Asian/Pacific Islanders, American Indians/Alaska Natives and Hispanics from 1992-2005

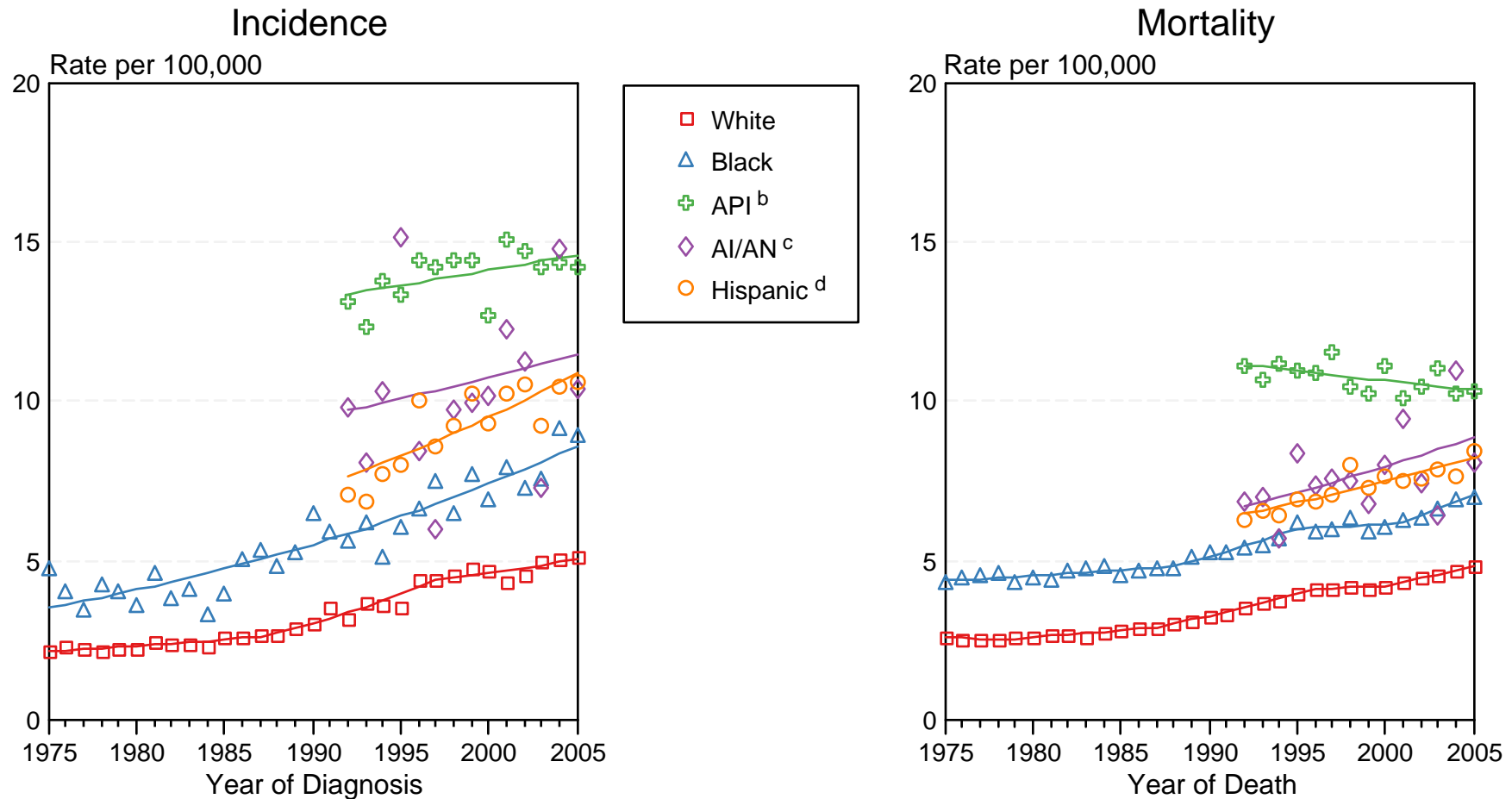


Figure XIV-2

Source: Incidence data for whites and blacks are from the SEER 9 areas (San Francisco, Connecticut, Detroit, Hawaii, Iowa, New Mexico, Seattle, Utah, Atlanta). Incidence data for Asian/Pacific Islanders, American Indians/Alaska Natives and Hispanics are from the SEER 13 Areas (SEER 9 Areas, San Jose-Monterey, Los Angeles, Alaska Native Registry and Rural Georgia). Mortality data are from US Mortality Files, National Center for Health Statistics, CDC.

^a Rates are age-adjusted to the 2000 US Std Population (19 age groups - Census P25-1103).

Regression lines are calculated using the Joinpoint Regression Program Version 3.3.1, April 2008, National Cancer Institute. Joinpoint analyses for Whites and Blacks during the 1975-2005 period allow a maximum of 4 joinpoints. Analyses for other ethnic groups during the period 1992-2005 allow a maximum of 3 joinpoints.

^b API = Asian/Pacific Islander.

^c AI/AN = American Indian/Alaska Native. Rates for American Indian/Alaska Native are based on the CHSDA(Contract Health Service Delivery Area) counties.

^d Hispanic is not mutually exclusive from whites, blacks, Asian/Pacific Islanders, and American Indians/Alaska Natives. Incidence data for Hispanics are based on NHIA and exclude cases from the Alaska Native Registry. Mortality data for Hispanics exclude cases from Connecticut, Maine, Maryland, Minnesota, New Hampshire, New York, North Dakota, Oklahoma, and Vermont.