

M 6.1, SOUTHERN IRAN

Origin Time: Wed 2008-09-10 11:00:34 UTC
Location: 26.83°N 55.83°E Depth: 15 km

PAGER Version 6

Created: 1 days, 1 hrs after earthquake

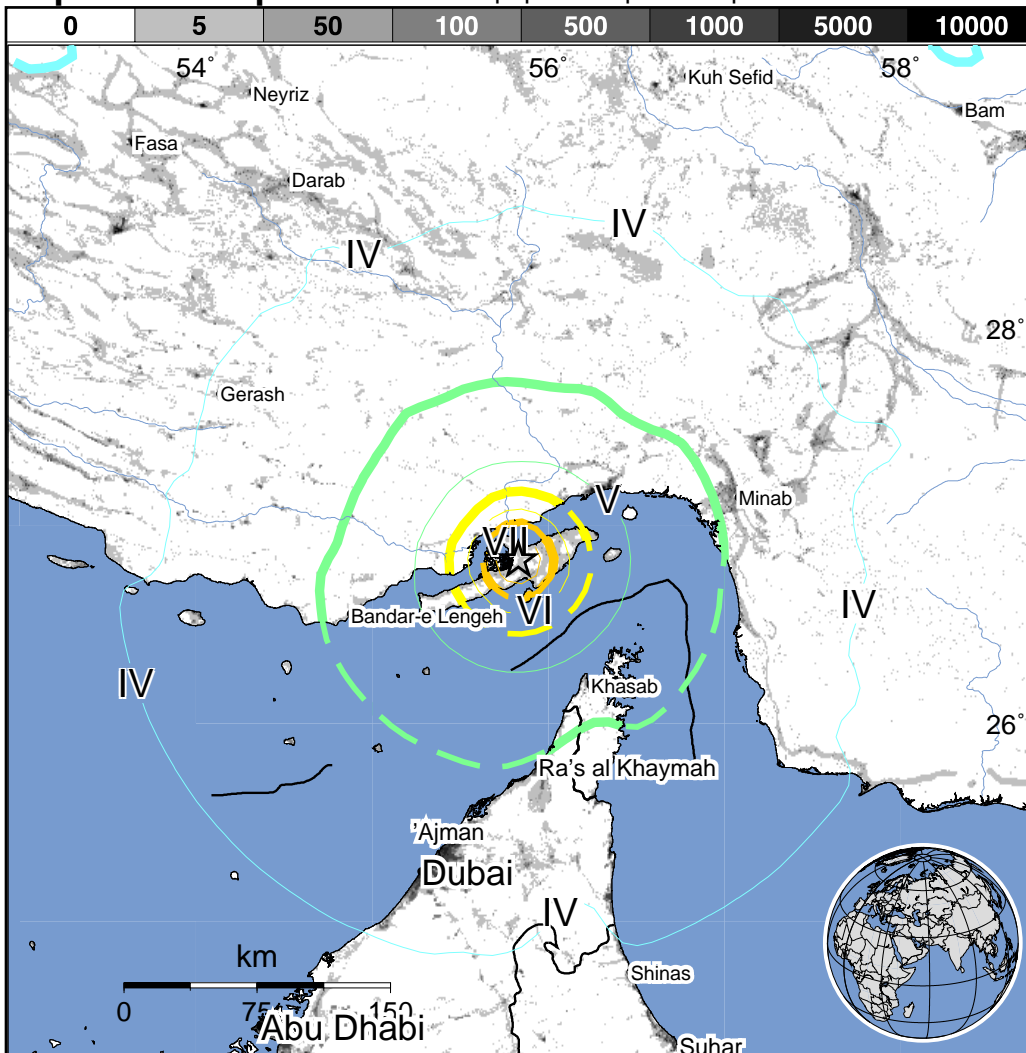
Estimated Population Exposed to Earthquake Shaking

ESTIMATED POPULATION EXPOSURE (k = x1000)		--*	2k*	4,844k	595k	20k	16k	7k	0	0
ESTIMATED MODIFIED MERCALLI INTENSITY		I	II-III	IV	V	VI	VII	VIII	IX	X+
PERCEIVED SHAKING		Not felt	Weak	Light	Moderate	Strong	Very strong	Severe	Violent	Extreme
POTENTIAL DAMAGE	Resistant Structures	none	none	none	V. Light	Light	Moderate	Moderate/Heavy	Heavy	V. Heavy
	Vulnerable Structures	none	none	none	Light	Moderate	Moderate/Heavy	Heavy	V. Heavy	V. Heavy

*Estimated exposure only includes population within the map area.

Population Exposure

population per ~1 sq. km from Landsat 2006

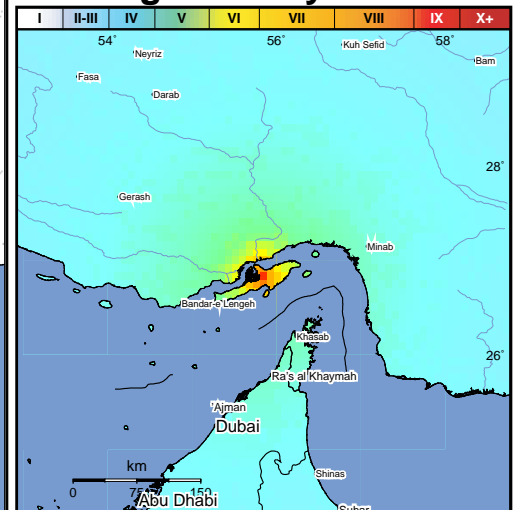


Selected City Exposure

MMI City	Population
V Khasab	17k
V Bandar-e Lengeh	22k
IV Umm al Qaywayn	44k
IV Ra's al Khaymah	115k
IV Minab	70k
IV Khawr Fakkan	33k
IV Dubai	1,137k
IV 'Ajman	226k
IV Sharjah	543k
IV Sirjan	207k
IV Abu Dhabi	603k

bold cities appear on map (k = x1000)

Shaking Intensity



Overall, the population in this region resides in structures that are highly vulnerable to earthquake shaking, though some resistant structures exist. A magnitude 6.6 earthquake 326 km Northeast of this one struck Bam, Iran on December 26, 2003 (UTC), with estimated population exposures of 75,000 at intensity IX or greater and 6,000 at intensity VIII, resulting in an estimated 26,271 fatalities. Recent earthquakes in this area have caused landslides that may have contributed to losses.

This information was automatically generated and has not been reviewed by a seismologist.