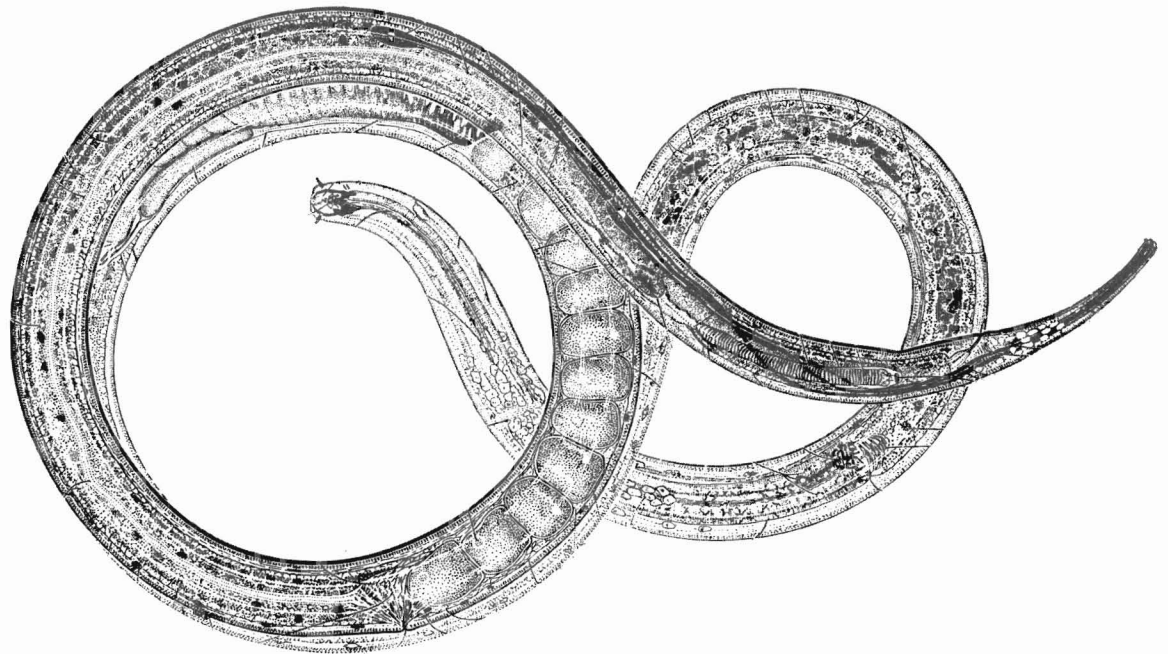

Illustrated Key to the Genera of Free-Living Marine Nematodes of the Order Enoplida

Edwin J. Keppner
Armen C. Tarjan



NOAA TECHNICAL REPORT NMFS

The major responsibilities of the National Marine Fisheries Service (NMFS) are to monitor and assess the abundance and geographic distribution of fishery resources, to understand and predict fluctuations in the quantity and distribution of these resources, and to establish levels for their optimum use. NMFS is also charged with the development and implementation of policies for managing national fishing grounds, development and enforcement of domestic fisheries regulations, surveillance of foreign fishing off United States coastal waters, and the development and enforcement of international fishery agreements and policies. NMFS also assists the fishing industry through marketing service and economic analysis programs, and mortgage insurance and vessel construction subsidies. It collects, analyzes, and publishes statistics on various phases of the industry.

The NOAA Technical Report NMFS series was established in 1983 to replace two subcategories of the Technical Reports series: "Special Scientific Report—Fisheries" and "Circular." The series contains the following types of reports: Scientific investigations that document long-term continuing programs of NMFS; intensive scientific reports on studies of restricted scope; papers on applied fishery problems; technical reports of general interest intended to aid conservation and management; reports that review in considerable detail and at a high technical level certain broad areas of research; and technical papers originating in economics studies and from management investigations. Since this is a formal series, all submitted papers receive peer review and those accepted receive professional editing before publication.

Copies of NOAA Technical Reports NMFS are available free in limited numbers to governmental agencies, both Federal and State. They are also available in exchange for other scientific and technical publications in the marine sciences. Individual copies may be obtained from: U.S. Department of Commerce, National Technical Information Service, 5285 Port Royal Road, Springfield, VA 22161. Although the contents have not been copyrighted and may be reprinted entirely, reference to source is appreciated.

34. Additions to a revision of the shark genus *Carcharhinus*: Synonymy of *Aprionodon* and *Hypoprion*, and description of a new species of *Carcharhinus* (Carcharhinidae), by J. A. F. Garrick. November 1985, 26 p.
35. Synoptic review of the literature on the Southern oyster drill *Thais haemastoma floridana*, by Philip A. Butler. November 1985, 9 p.
36. An egg production method for estimating spawning biomass of pelagic fish: Application to the northern anchovy, *Engraulis mordax*, by Reuben Lasker (editor). December 1985, 99 p.
37. A histopathologic evaluation of gross lesions excised from commercially important North Atlantic marine fishes, by Robert A. Murchelano, Linda Despres-Patanjo, and John Ziskowski. March 1986, 14 p.
38. Fishery atlas of the northwestern Hawaiian Islands, by Richard N. Uchida and James H. Uchiyama (editors). September 1986, 142 p.
39. Survey of fish protective facilities at water withdrawal sites on the Snake and Columbia Rivers, by George A. Swan, Tommy G. Withrow, and Donn L. Park. April 1986, 34 p.
40. Potential impact of ocean thermal energy conversion (OTEC) on fisheries, by Edward P. Myers, Donald E. Hoss, Walter M. Matsumoto, David S. Peters, Michael P. Seki, Richard N. Uchida, John D. Ditmars, and Robert A. Paddock. June 1986, 33 p.
41. A stationary visual census technique for quantitatively assessing community structure of coral reef fishes, by James A. Bohnsack and Scott P. Bannerot. July 1986, 15 p.
42. Effects of temperature on the biology of the northern shrimp, *Paridulus borealis*, in the Gulf of Maine, by Spencer Apollonio, David K. Stevenson, and Earl E. Dunton, Jr. September 1986, 22 p.
43. Environment and resources of seamounts in the North Pacific, by Richard N. Uchida, Sigeiti Hayasi, and George W. Boehlert (editors). September 1986, 105 p.
44. Synopsis of biological data on the porgies, *Calamus arctifrons* and *C. proridens* (Pisces: Sparidae), by George H. Darcy. September 1986, 19 p.
45. Meristic variation in *Sebastes* (Scorpaenidae), with an analysis of character association and bilateral pattern and their significance in species separation, by Lo-chai Chen. September 1986, 17 p.
46. Distribution and relative abundance of pelagic nonsalmonid nekton off Oregon and Washington 1979-84, by Richard D. Brodeur and William G. Pearcy. December 1986, 85 p.
47. Reproduction, maturation, and seed production of cultured species: Proceedings of the twelfth U.S.-Japan meeting on aquaculture, Baton Rouge, Louisiana, October 25-29, 1983, by Carl J. Sindermann (editor). February 1987, 73 p.
48. Widow rockfish: Proceedings of a workshop, Tiburon, California, December 11-12, 1980, by William H. Lenarz and Donald R. Gunderson (editors). January 1987, 57 p.
49. Reproduction, movements, and population dynamics of the southern kingfish, *Menticirrhus americanus*, in the northwestern Gulf of Mexico, by Stephen M. Harding and Mark E. Chittenden, Jr. March 1987, 21 p.
50. Preparation of acetate peels of valves from the ocean quahog, *Arctica islandica*, for age determinations, by John W. Ropes. March 1987, 5 p.
51. Status, biology, and ecology of fur seals. Proceedings of an international workshop, Cambridge, England, 23-27 April 1984, by John P. Croxall and Roger L. Gentry (editors). June 1987, 212 p.
52. Limited access alternatives for the Pacific groundfish fishery, by Daniel D. Huppert (editor). May 1987, 45 p.
53. Ecology of east Florida sea turtles: Proceedings of the Cape Canaveral, Florida, sea turtle workshop, Miami, Florida, February 26-27, 1985, by Wayne N. Witzell (convener and editor). May 1987, 80 p.
54. Proximate and fatty acid composition of 40 southeastern U.S. finfish species, by Janet A. Gooch, Malcolm B. Hale, Thomas Brown, Jr., James C. Bonnet, Cheryl G. Brand, and Lloyd W. Reiger. June 1987, 23 p.
55. Proximate composition, energy, fatty acid, sodium, and cholesterol content of finfish, shellfish, and their products, by Judith Krzynowek and Jenny Murphy. July 1987, 53 p.
56. Some aspects of the ecology of the leatherback turtle *Dermochelys coriacea* at Laguna Jolova, Costa Rica, by Harold F. Hirth and Larry H. Ogren. July 1987, 14 p.
57. Food habits and dietary variability of pelagic nekton off Oregon and Washington, 1979-1984, by Richard D. Brodeur, Harriet V. Lorz, and William G. Pearcy. July 1987, 32 p.
58. Stock assessment of the Gulf of Menhaden, *Brevoortia patronus*, fishery, by Douglas S. Vaughan. September 1987, 18 p.
59. Atlantic Menhaden, *Brevoortia tyrannus*, purse seine fishery, 1972-84, with a brief discussion of age and size composition of the landings, by Joseph W. Smith, William R. Nicholson, Douglas S. Vaughan, Donnie L. Dudley, and Ethel A. Hall. September 1987, 23 p.
60. Gulf Menhaden, *Brevoortia patronus*, purse seine fishery, 1974-85, with a brief discussion of age and size composition of the landings, by Joseph W. Smith, Eldon J. Levi, Douglas S. Vaughan, and Ethen A. Hall. December 1987, 8 p.
61. Manual for starch gel electrophoresis: A method for the detection of genetic variation, by Paul B. Aebersold, Gary A. Winans, David J. Teel, George B. Milner, and Fred M. Utter. December 1987, 19 p.
62. Fishery publication index, 1980-85; Technical memorandum index, 1972-85, by Cynthia S. Martin, Shelley E. Arenas, Jacki A. Guffey, and Joni M. Packard. December 1987, 149 p.
63. Stock assessment of the Atlantic Menhaden, *Brevoortia tyrannus*, fishery, by Douglas S. Vaughan and Joseph W. Smith. January 1988, 18 p.
64. Illustrated key to penaeoid shrimps of commerce in the Americas, by Isabel Perez Farfante. April 1988, 32 p.
65. History of whaling in and near North Carolina, by Randall R. Reeves and Edward Mitchell. March 1988, 28 p.
66. Atlas and zoogeography of common fishes in the Bering Sea and Northeastern Pacific, by M. James Allen and Gary B. Smith. April 1988, 151 p.

NOAA Technical Report NMFS 77

Illustrated Key to the Genera of Free-Living Marine Nematodes of the Order Enoplida

Edwin J. Keppner
Armen C. Tarjan

July 1989



U.S. DEPARTMENT OF COMMERCE

Robert Mosbacher, Secretary

National Oceanic and Atmospheric Administration

William E. Evans, Under Secretary for Oceans and Atmosphere

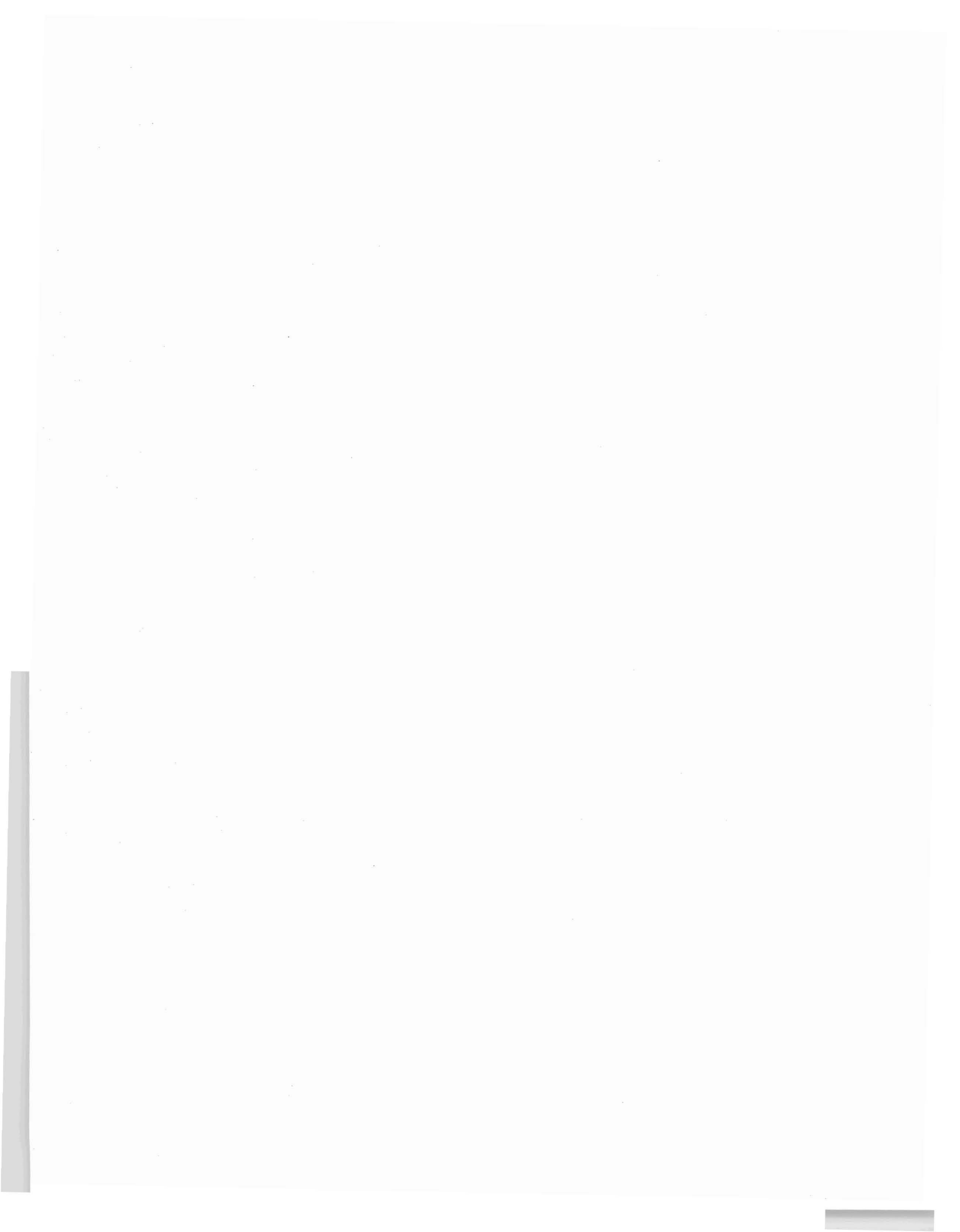
National Marine Fisheries Service

James Brennan, Assistant Administrator for Fisheries

The National Marine Fisheries Service (NMFS) does not approve, recommend or endorse any proprietary product or proprietary material mentioned in this publication. No reference shall be made to NMFS, or to this publication furnished by NMFS, in any advertising or sales promotion which would indicate or imply that NMFS approves, recommends or endorses any proprietary product or proprietary material mentioned herein, or which has as its purpose an intent to cause directly or indirectly the advertised product to be used or purchased because of this NMFS publication.

CONTENTS

Introduction	1
Acknowledgments	2
Citations	2
Use of the key	2
Flow chart of taxa included in key	3
Key to genera of the Enoplida	6
Illustration sources	24
References for illustration sources	25



Illustrated Key to the Genera of Free-Living Marine Nematodes of the Order Enoplida¹

EDWIN J. KEPPNER

*Habitat Conservation Division
Southeast Regional Office
National Marine Fisheries Service, NOAA
3500 Delwood Beach Road
Panama City, FL 32407*

ARMEN C. TARJAN

*Department of Entomology and Nematology
University of Florida
Gainesville, FL 32611-0611*

Abstract

A pictorial key to 118 genera of free-living marine nematodes in the order Enoplida is presented. Specific morphological and anatomical features are illustrated to facilitate use of the key. The purpose of this work is to provide a single key to the genera of enoplid nematodes to facilitate identification of these organisms by nematologists and marine biologists working with meiofauna.

Introduction

Free-living marine nematodes are a significant component of estuarine and marine benthic communities and are considered a part of the meiofauna. Nematodes are often the most numerically abundant organisms in estuarine and marine sediments, and their species diversity within a given estuarine or marine benthic habitat is usually quite large. Free-living marine nematodes recently have been examined as possible indicators of pollution in estuarine and marine environments. In North America, studies to determine the ecological role of nematodes and their response to pollution have been difficult. This is due to the instability of the taxonomy of these organisms and the absence of keys to several of the genera within each order.

Hope and Murphy (1972), Gerlach and Riemann (1974), Andr assy (1976), Lorenzen (1981), and Inglis (1983) have published classifications of free-living marine nematodes. Major differences exist between these classifications which can lead to confusion in the identification of these animals. Much of the morphology of free-living marine nematodes is not well understood. As a result, homologous structures are difficult to identify. Existing classifications and keys to the taxa of free-living marine nematodes reflect these difficulties.

The systematics and general ecology of the free-living marine nematodes have been summarized by Heip et al. (1982, 1985). Tarjan (1980) provided an illustrated key to a large number of the genera of free-living marine nematodes in each order with numerous drawings of representative species of these genera. Platt and Warwick (1983) developed a pictorial key to the genera of free-living marine nematodes and provided drawings and descriptions of the species of Enoplida found in British waters. The use of these keys can provide a sound basis for the identification of the genera of marine nematodes. However, some of the genera of enoplid nematodes are absent from both keys.

It was decided that the key provided by Tarjan (1980) should be expanded to include the most commonly accepted genera of the Enoplida. The goal was not to present a new classification of the Enoplida but to provide a means of identification of the genera included in the key. The original key of Tarjan (1980) was based on the classification given by Andr assy (1976). The key presented herein is a compilation of the published literature and relies heavily on classifications of the Enoplida given by Andr assy (1976) and Gerlach and Riemann (1974). This key is not intended to reflect phylogenetic relationships. The key includes the Tripyloidina in the Enoplida simply so that those free-living marine nematodes with segmented cephalic setae are all in one place. Gerlach and Riemann (1974) placed them in the Enoplida but Andr assy (1976) did not. The genus *Polygastrophora* De Man, 1922 was removed from the Enchelidiidae and placed with the Belbollidae for ease of identification because both genera, *Polygastrophora* and *Bolbellia* (Cobb 1920) Gerlach and Riemann 1974, possess a multibulbar esophagus, and some species, such as *Polygastrophora edax* Wieser

¹Florida Agricultural Experiment Station Journal Series No. 8673.

and Hopper, 1967, do not have sexual dimorphism in the stoma.

The key presented herein includes 118 genera of the Enoplida and follows the pattern given in Tarjan (1980). The decision as to which genera should be included in the key was difficult and in some cases arbitrary. However, an attempt was made to include those genera which have been reported primarily from estuarine and marine environments rather than primarily from freshwater, those that contain more than one species, and those that have been collected by the authors. This key includes about 70% of the genera listed for the Enoplida, and the genera included account for about 90% of the known species of free-living marine enoplids. Platt and Warwick (1983) provide a brief and concise discussion of the morphology of free-living marine nematodes and enoplids that may be consulted as an aid to using this key.

A key such as this inevitably perpetuates errors, misinterpretations, and inadequate descriptions of taxa that exist in the literature. Accordingly, it is hoped that the present work will stimulate others to correct such errors where they exist and refine the definition of taxa where necessary.

Acknowledgments

We express our sincere appreciation to those persons who reviewed the key and provided many helpful suggestions. Comments and recommendations were received from Dr. István Andrásy, Eotvos Lorand University, Hungary; Dr. W. Duane Hope, U.S. National Museum of Natural History; Dr. Preben Jensen, Denmark; and Dr. Howard Platt, British Museum (Natural History).

We are grateful to Lisa A. Hoover who devoted much time to testing the key using specimens of marine nematodes collected by her and the senior author. Her efforts resulted in clarification of several potential problem areas.

Citations

Andrásy, I.

1976 Evolution as the basis for the systematization of nematodes. *Akademiai Kaido*, Budapest, 288 p.

Gerlach, S.A., and F. Riemann

1974 The Bremerhaven checklist of aquatic nematodes. Part 2. *Veröff. Inst. Meeresforsch. Bremerhaven, Suppl.* 4, p. 405-736.

Heip, C., M. Vincx, N. Smol, and G. Vranken

1982 The systematics and ecology of free-living marine nematodes. *Helminthol. Abstr. Ser. B.* 51:1-31.

Heip, C., M. Vincx, and G. Vranken

1985 The ecology of marine nematodes. *Oceanogr. Mar. Biol. Ann. Rev.* 23:399-489.

Hope, W.D., and D.G. Murphy

1972 A taxonomic hierarchy and checklist of the genera and higher taxa of marine nematodes. *Smithson. Contrib. Zool.* 136:1-101.

Inglis, W.G.

1983 An outline classification of the Phylum Nematoda. *Aust. J. Zool.* 31:243-255.

Lorenzen, S.

1981 Entwurf eines phylogenetischen systems der freilebenden Nematoden. *Veröff. Inst. Meeresforsch. Bremerhaven, Suppl.* 7, p. 1-472.

Platt, H.M., and R.M. Warwick

1983 Free-living marine nematodes. Part 1. *British Enoplids.* Cambridge Univ. Press, Cambridge, 307 p.

Tarjan, A.C.

1980 An illustrated guide to the marine nematodes. *Inst. Food Agric. Sci., Univ. Florida, Gainesville*, 135 p.

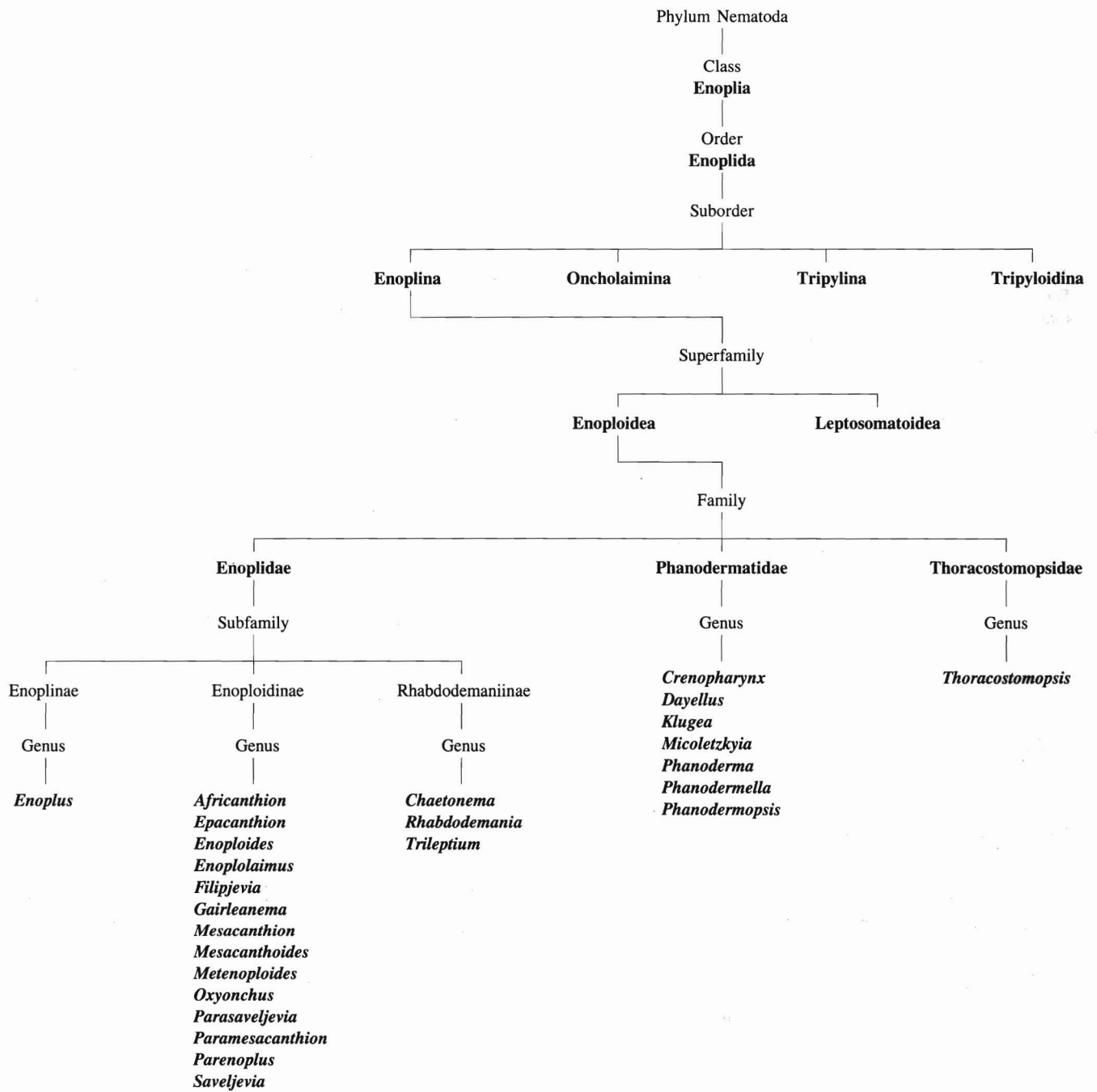
Use of the key

Couplet numbers down the far-right margin of the page refer to the location of related lower-ranked taxa. When one arrives at a family or subfamily name on the right side, rather than another couplet, the genera within that taxon immediately follow in couplets designated by lower-case letters on the left. For example, couplet 5(4)B ends with the family Thoracostomatidae. The genera included in that family are in couplets "a" and "b" immediately following. The parenthetical portion of the couplet number [e.g., (4) in 5(4)B] indicates the referent couplet, allowing one to work backward, as well as forward, through the key. Numbers in parentheses within the descriptions refer to figures.

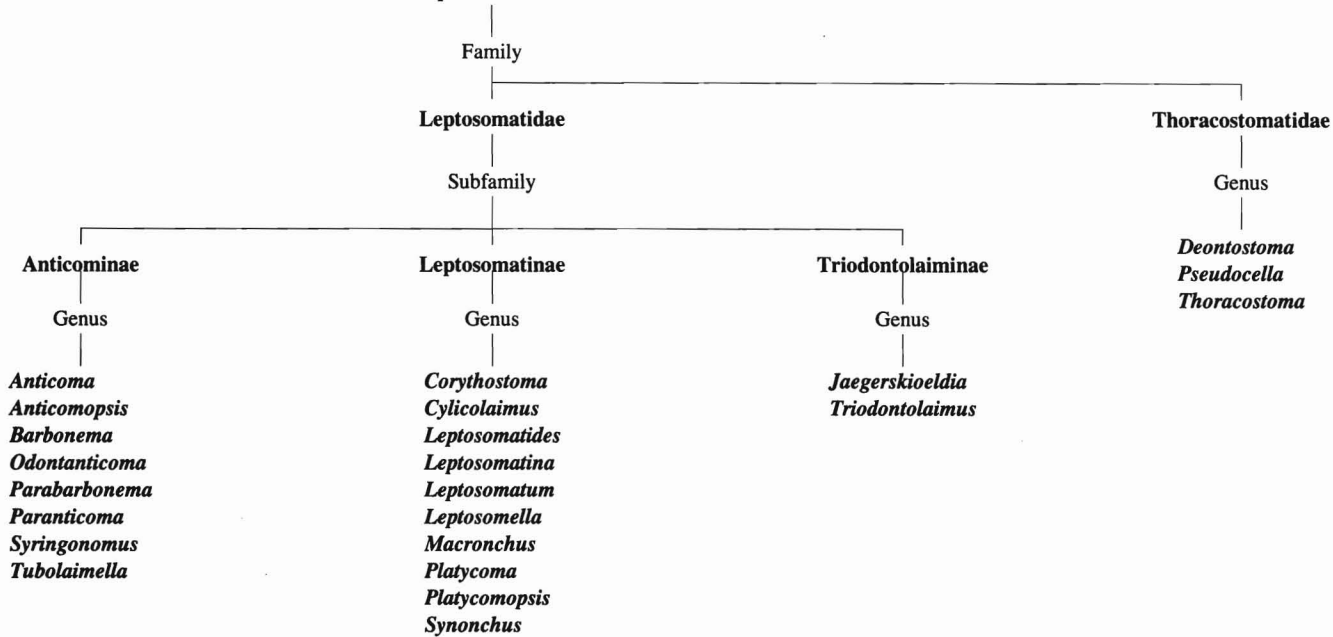
The following explanations of terms are provided to aid in avoiding confusion, particularly at the beginning of the key. The term **stoma** is used throughout to designate modification of the anterior end for feeding. Stoma refers to both the mouth opening that is present in all nematodes and the buccal cavity which can be well developed or greatly reduced. The **esophagus** of marine nematodes is, in general, either muscular (outer border smooth and few nuclei and vesicles visible within esophageal tissue) or vesiculate-cellulate (outer border lobed or irregular and many nuclei and vesicles visible). In some taxa such as the Phanodermatidae, the anterior portion of the esophagus is muscular and the posterior part that comprises most of the esophagus is vesiculate-cellulate. These taxa are considered to have a vesiculate-cellulate esophagus. The anterior portion of the esophagus in some free-living marine nematodes surrounds the stoma and attaches to the cuticle to form a **cephalic capsule**. The thickness of the cephalic capsule and the extent of contact with the cuticle varies. It is imperative to use the illustrations cited in the couplets in deciding which statements are appropriate.

Illustrations used in the key were redrawn from published references or are original drawings by the senior author. In some cases, portions of the anatomy shown on the drawings are labelled or emphasized with ink; others have been deleted to better portray the structures of interest. Credit is given for each illustration used. Since this key is proposed for non-profit educational purposes, it is not considered to be an infringement of the United States Revised Copyright Law.

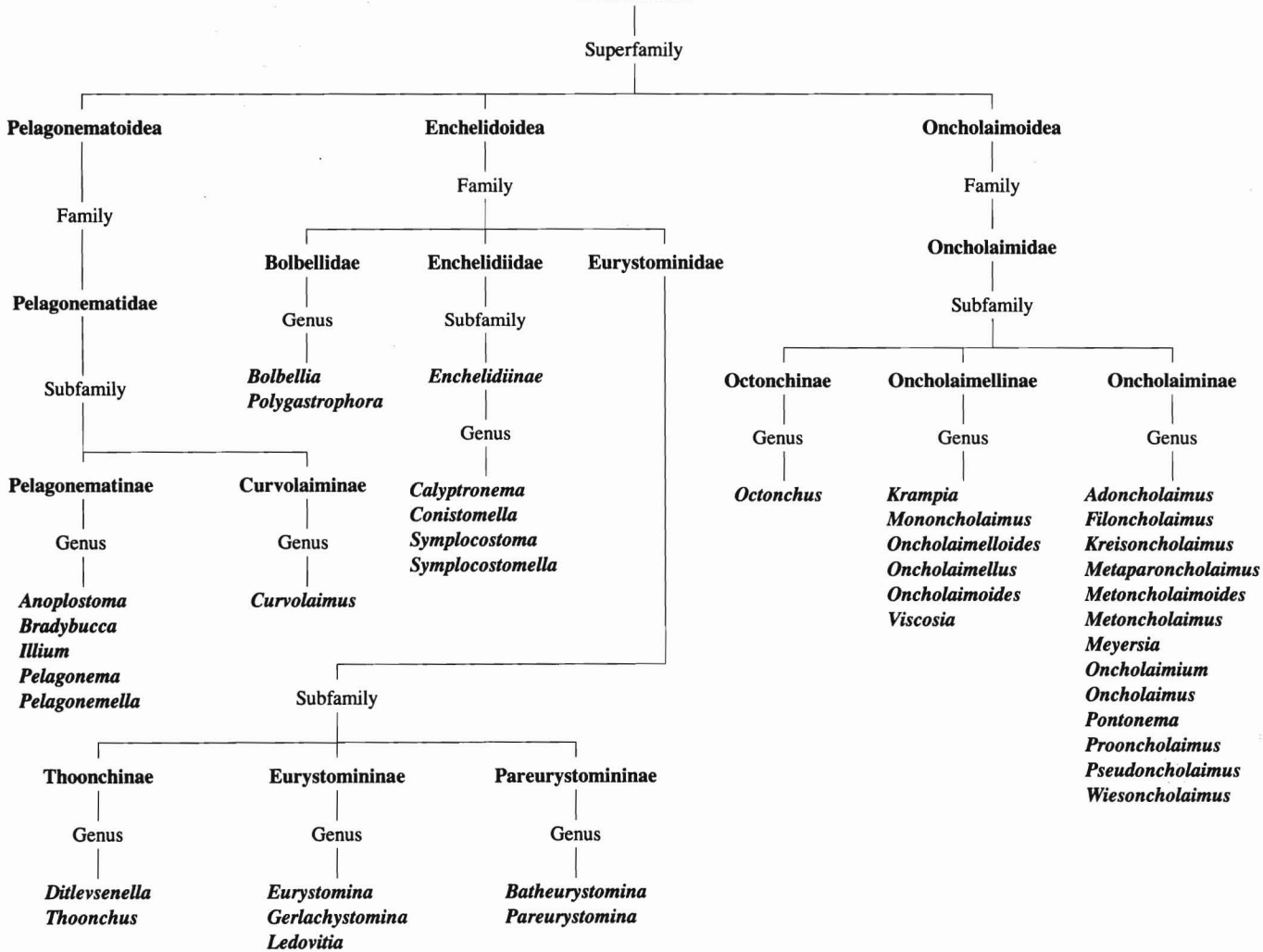
Flow chart of taxa included in key

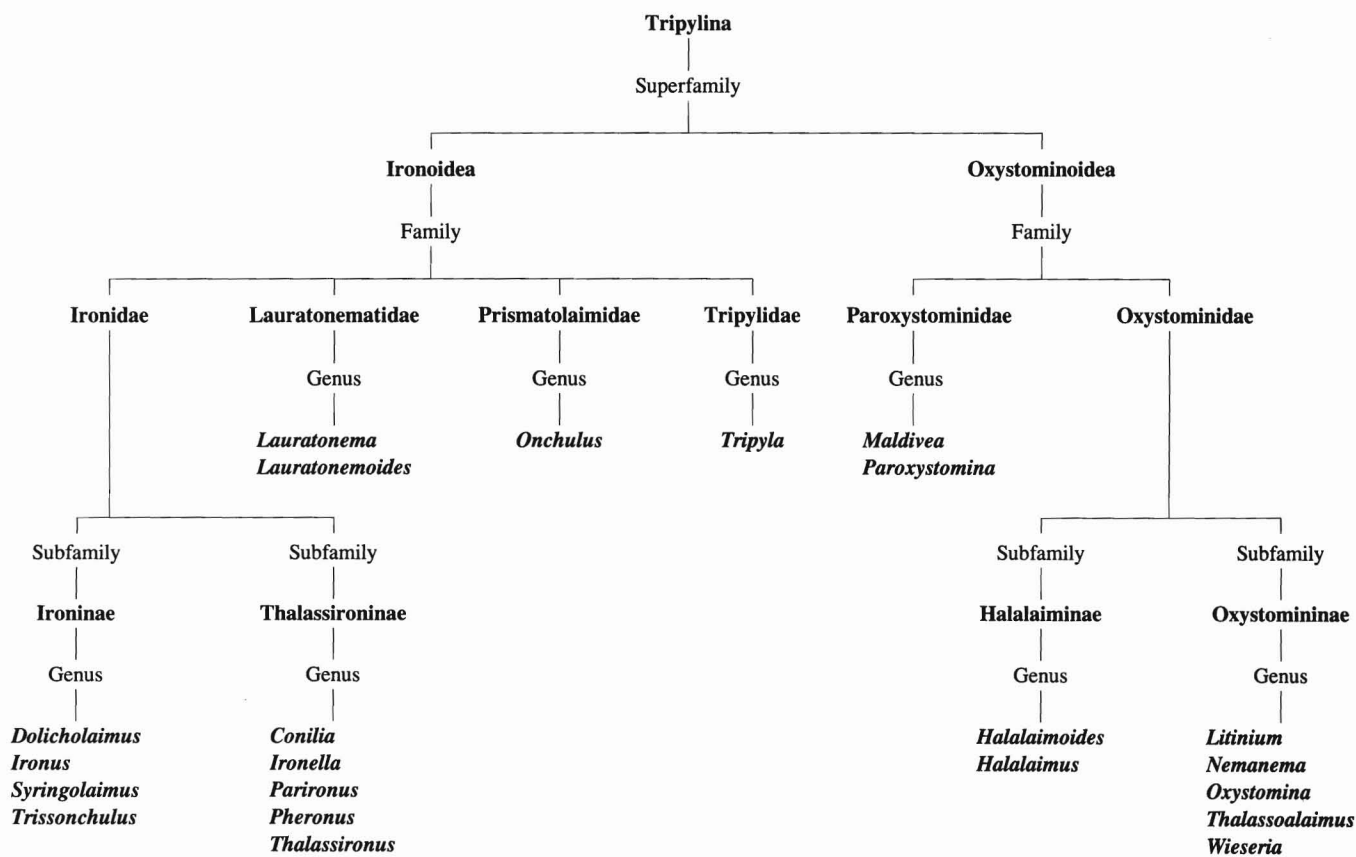
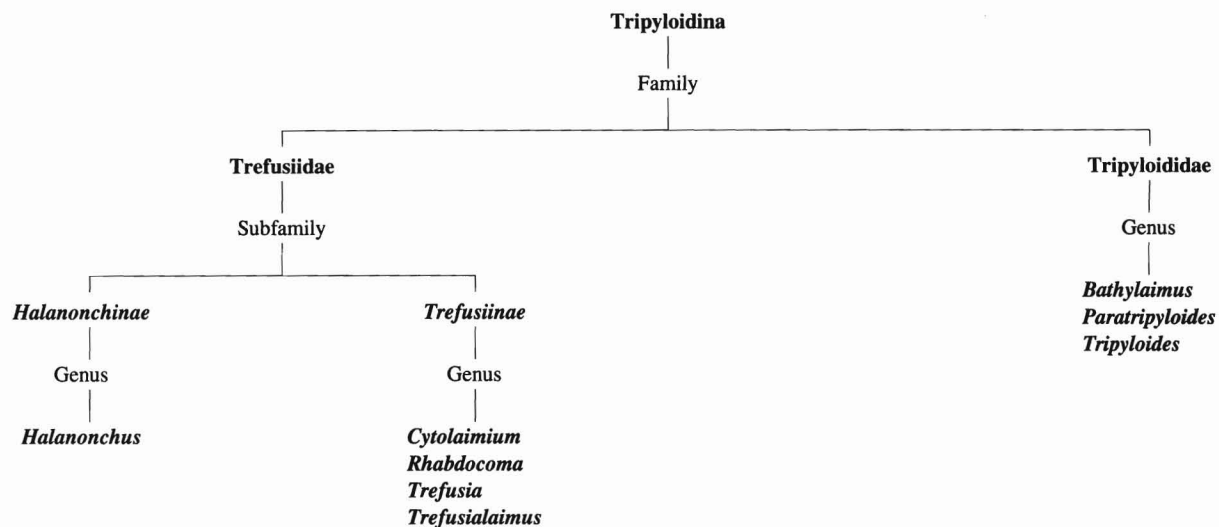


Leptosomatoidea



Oncholaimina





Abbreviations used in the key

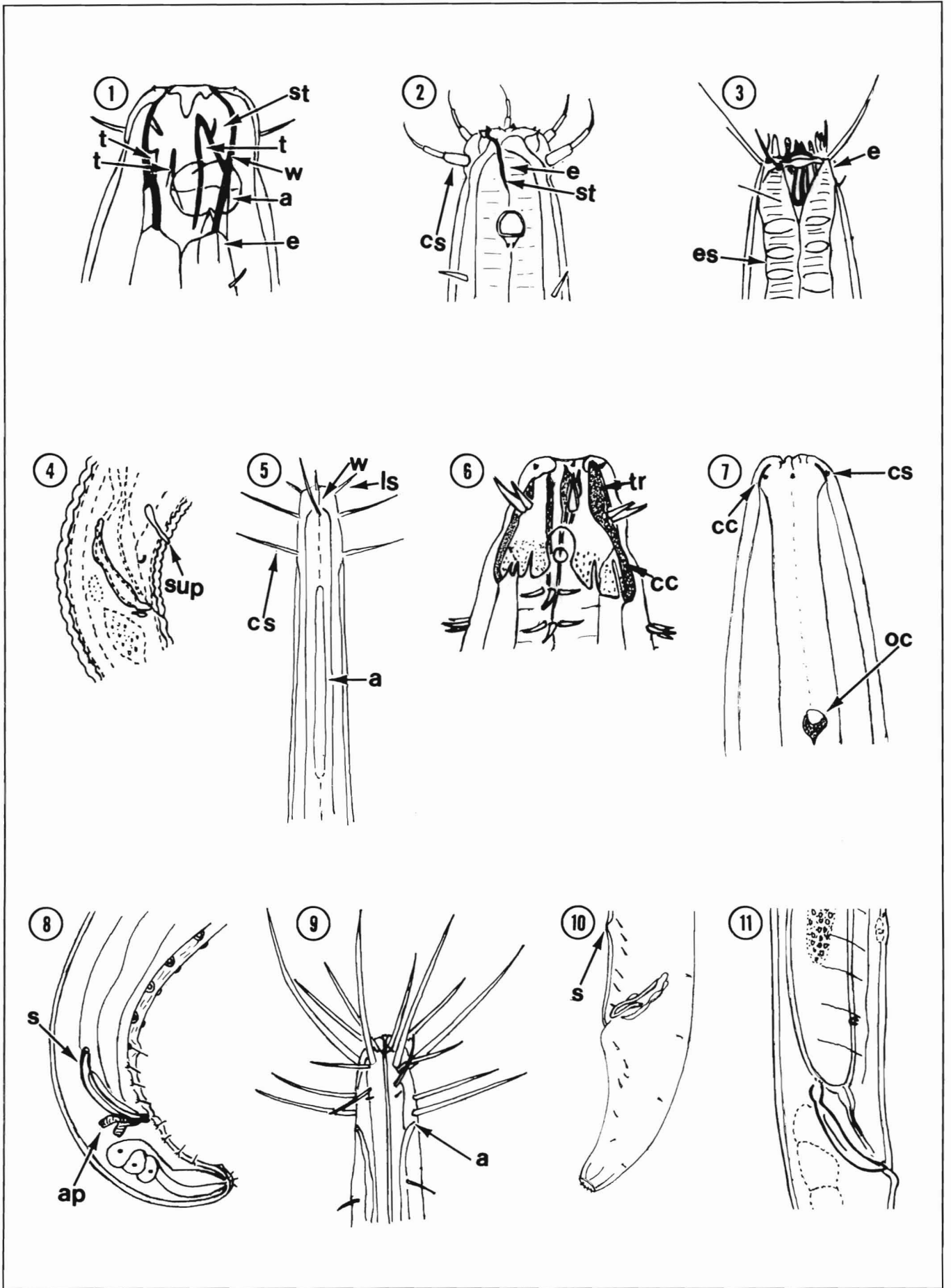
a amphid ab apical band an anus ap apophysis b bar bn band c chambers cc cephalic capsule cl claw cir circular structure cs cephalic seta	d denticles ds double seta dt dorsal tooth e esophagus ep excretory pore es esophageal structure g gubernaculum h heavily cuticularized walls it inner thickening	l labia lr longitudinal rods ls labial seta lsv left subventral (tooth) m mandibles ms solid mandibles oc ocellus p exit pore rb refractive body rsv right subventral (tooth)	s spicules sp spear spn spinneret st stoma str striations sup supplement svt subventral tooth t tooth tb transverse bar tr tropis v vulva w walls
--	--	--	--

Key to genera of the Enoplida

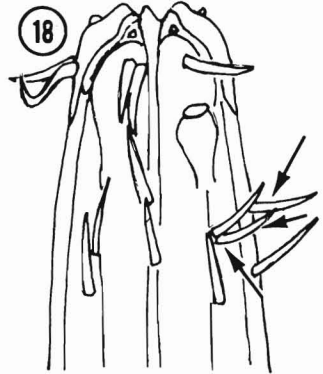
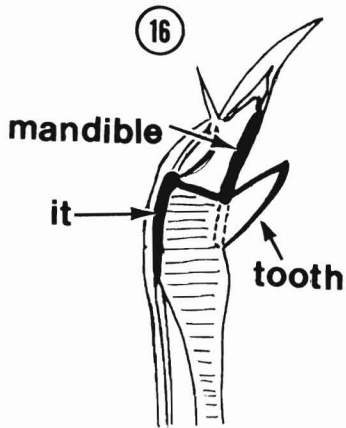
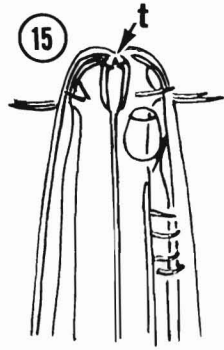
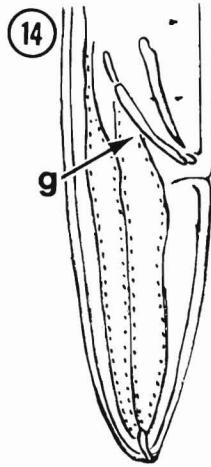
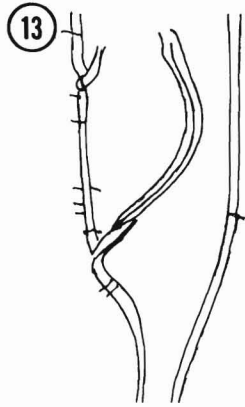
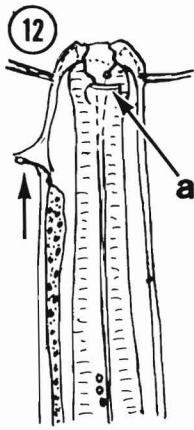
Enoplida Filipjev, 1929

The genera in this key includes free-living marine nematodes with the following characteristics: Amphid variable, consisting of slit-like opening and subcuticular pouch, may be enlarged, rounded, longitudinally oval or unispiral (Figs. 1,2,5,67,114); integument smooth or annulated, rarely ornamented (punctate); lateral fields absent; stoma variable in shape, teeth and denticles sometimes present, mandibles present in some; esophagus cylindrical to clavate, rarely with bulb-like swellings or bulbs.

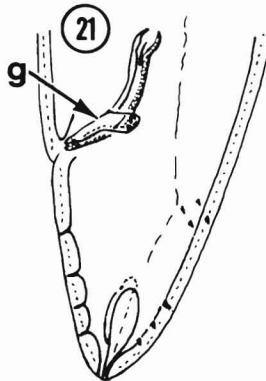
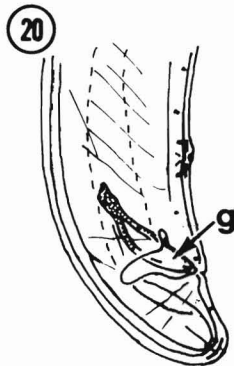
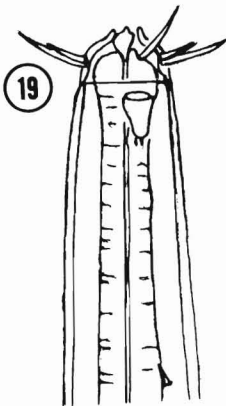
- 1 **A** Cephalic setae segmented (**2cs**, **118**). (**Suborder Tripyloidina**) **28**
- B** Cephalic setae not segmented (**5cs**) **2**
- 2(1) **A** Esophagus only enveloping posterior end of stoma (**1e**); stoma spacious (**1st**); barrel-shaped with heavily cuticularized walls (**1w**) with or without teeth (**1t**) and/or denticles; males of some genera with reduced stoma (**76**). (**Suborder Oncholaimina**) **19**
- B** Esophagus extending anteriorly to, or close to, lip region (**2e**); stoma narrow or large, with weakly cuticularized walls (**2st**, **5w**) **3**
- 3(2) **A** Esophagus extending to lip region where it is attached to integument forming a cephalic capsule (**3e**, **6cc**, **7cc**); precloacal supplements, when present, often cuticularized, tubular (**4sup**); amphids pocket-shaped (**12a**). (**Suborder Enoplina**) **4**
- B** Esophagus extending to, or close to, lip region but not attached to integument (**2e**); precloacal supplements papilloid or setose; amphids of variable shape. (**Suborder Tripylina**) **12**
- 4(3) **A** Structure of esophagus muscular (**2e**), not vesiculate-cellulate (**3es**); stoma simple; teeth, if present, generally of unequal size; mandibles (**40m**) absent. (**Superfamily Leptosomatoidea**) **5**
- B** Esophagus with irregular outline and generally of vesiculate-cellulate structure; stoma generally with three teeth of about equal size; mandibles present or absent (**28m**, **34m**). (**Superfamily Enoploidea**) **3**
- 5(4) **A** Cephalic capsule inconspicuous with unmarked, weakly-lobed posterior margins. (**Family Leptosomatidae**) **6**
- B** Cephalic capsule displaying conspicuous spots and indentations with strongly-lobed posterior margins (**6cc**) **Thoracostomatidae**



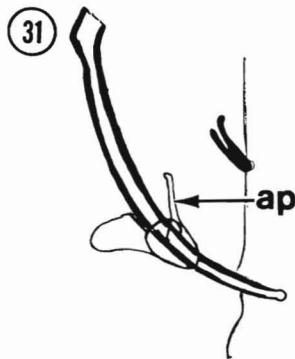
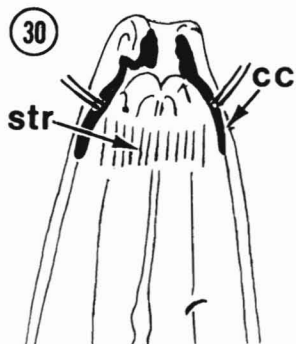
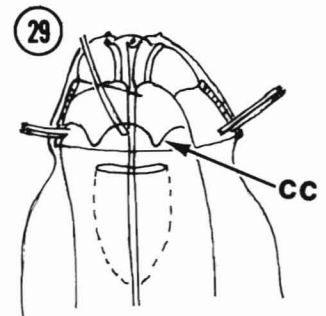
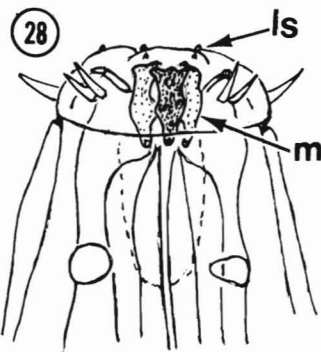
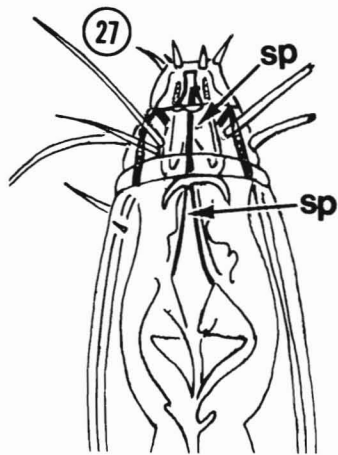
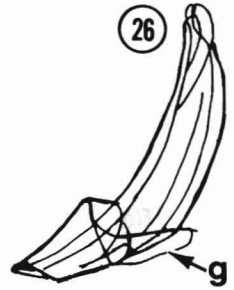
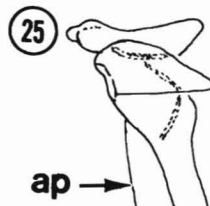
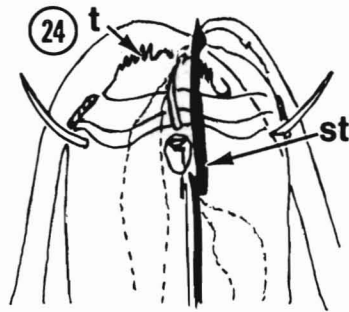
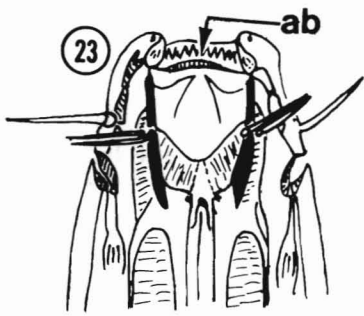
- a Ocelli with lens present (7oc); caudal glands extending anterior to anus b
Ocelli without lens; caudal glands confined to tail *Pseudocella* Filipjev, 1927
- b(a) Tooth-like structure (tropis) present on ventral side of cephalic capsule (6tr)
..... *Thoracostoma* Marion, 1870
Tooth-like structure (tropis) absent *Deontostoma* Filipjev, 1916
- 6(5) A Cephalic capsule without noticeable inner thickening (12); teeth small if present (15t) *Anticominae*
 - a Cephalic setae about three head diameters long b
Cephalic setae not more than one head diameter long d
 - b(a) Stoma small, simple c
Stoma well developed *Tubolaimella* Cobb, 1933
 - c(b) Amphids posterior to longest postcephalic setae (9a); preloacal supplement absent
..... *Barbonema* Filipjev, 1927
Amphids anterior to longest postcephalic setae; preloacal supplement present (10sup)
..... *Parabarbonema* Inglis, 1964
 - d(a) Gubernaculum present e
Gubernaculum absent (11) *Anticomopsis* Micoletzky and Kreis, 1930
 - e(d) Excretory pore situated on cuticular projection (12) *Paranticoma* Micoletzky and Kreis, 1930
Excretory pore normal, not on cuticular projection f
 - f(e) Tubular preloacal supplement present or absent; setiform, subventral, preloacal supplements absent;
gubernaculum well developed (13) g
Tubular preloacal supplement absent; setiform, subventral supplements present; gubernaculum small,
simple (14g) *Syringonomous* Hope and Murphy, 1969
 - g(f) Stoma well developed with distinct, small teeth (15t) *Odontanticoma* Platonova, 1976
Stoma reduced, teeth absent *Anticoma* Bastian, 1865
- B Cephalic capsule with noticable inner thickening (16it); teeth present or absent 7
- 7(6) A Stoma with three equally long mandibular teeth (17t) *Triodontolaiminae*
 - a Tail filiform with acute tip *Triodontolaimus* De Man, 1893
Tail short with clavate tip *Jaegerskioeldia* Filipjev, 1916
- B Stoma with or without small teeth, of equal length if more than one *Leptosomatinae*
 - a Stoma with no more than one small tooth b
Stoma with several teeth, plates, or dentated ribs f
 - b(a) Cervical setae present in two to three circles (18) *Platycomopsis* Ditlevsen, 1926
Cervical setae absent c
 - c(b) Tail clavate *Leptosomella* Filipjev, 1927
Tail cylindrical or conical, rounded or acute tip d
 - d(c) Cephalic sensillae papillose (7cs); ocelli present e
Cephalic sensillae setose, well developed (19); ocelli absent *Leptosomatina* Allgén, 1951
 - e(d) Preloacal supplement present; gubernaculum large, with anteriorly directed projections (20g); sexual dimor-
phism in amphids absent *Leptosomatides* Filipjev, 1918
Preloacal supplement reduced or absent; gubernaculum small, without anteriorly directed projections
(21g); sexual dimorphism in amphids present *Leptosomatum* Bastian, 1865



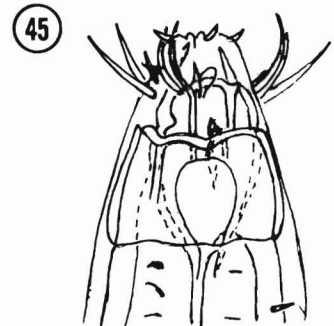
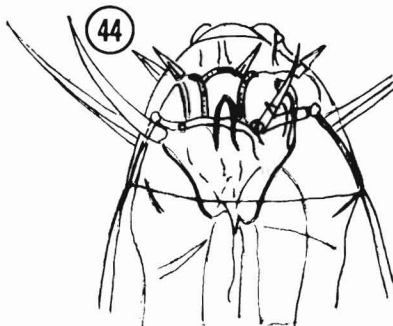
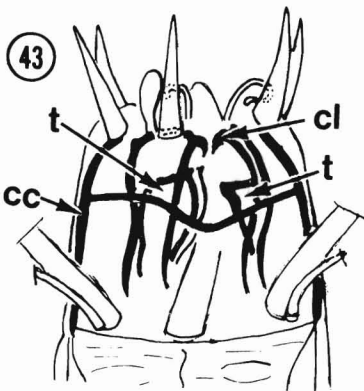
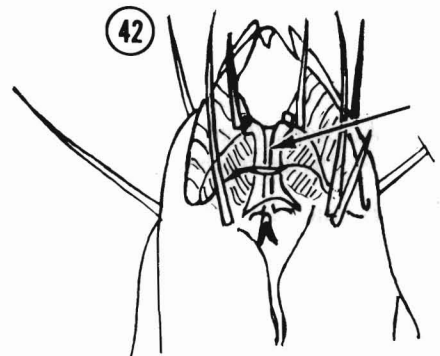
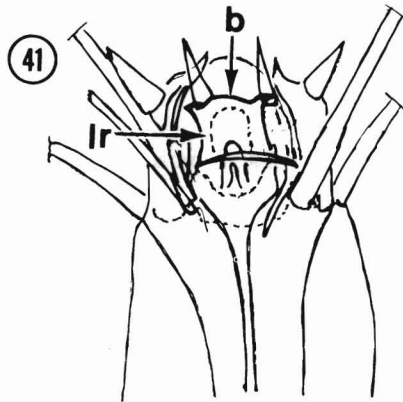
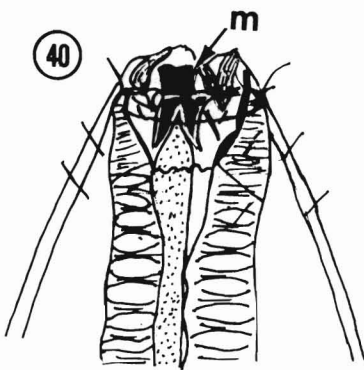
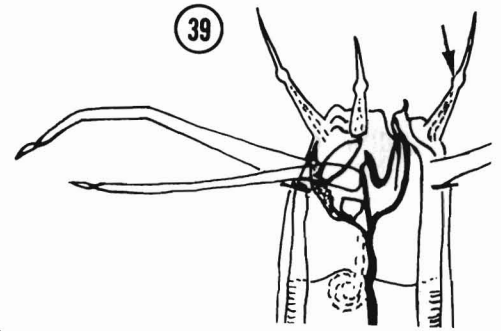
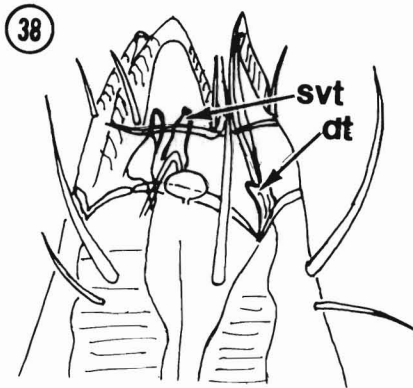
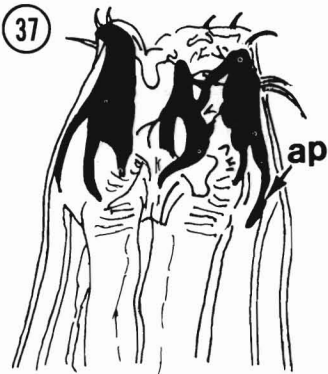
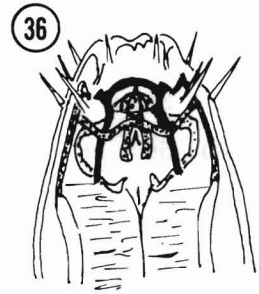
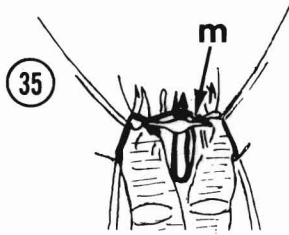
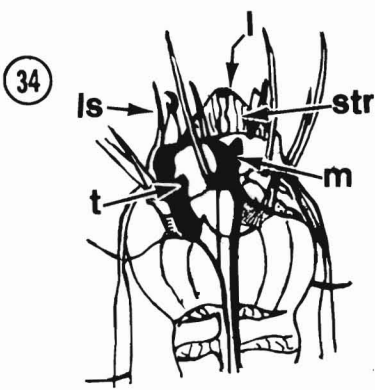
**subventral section
vestibule & stoma**



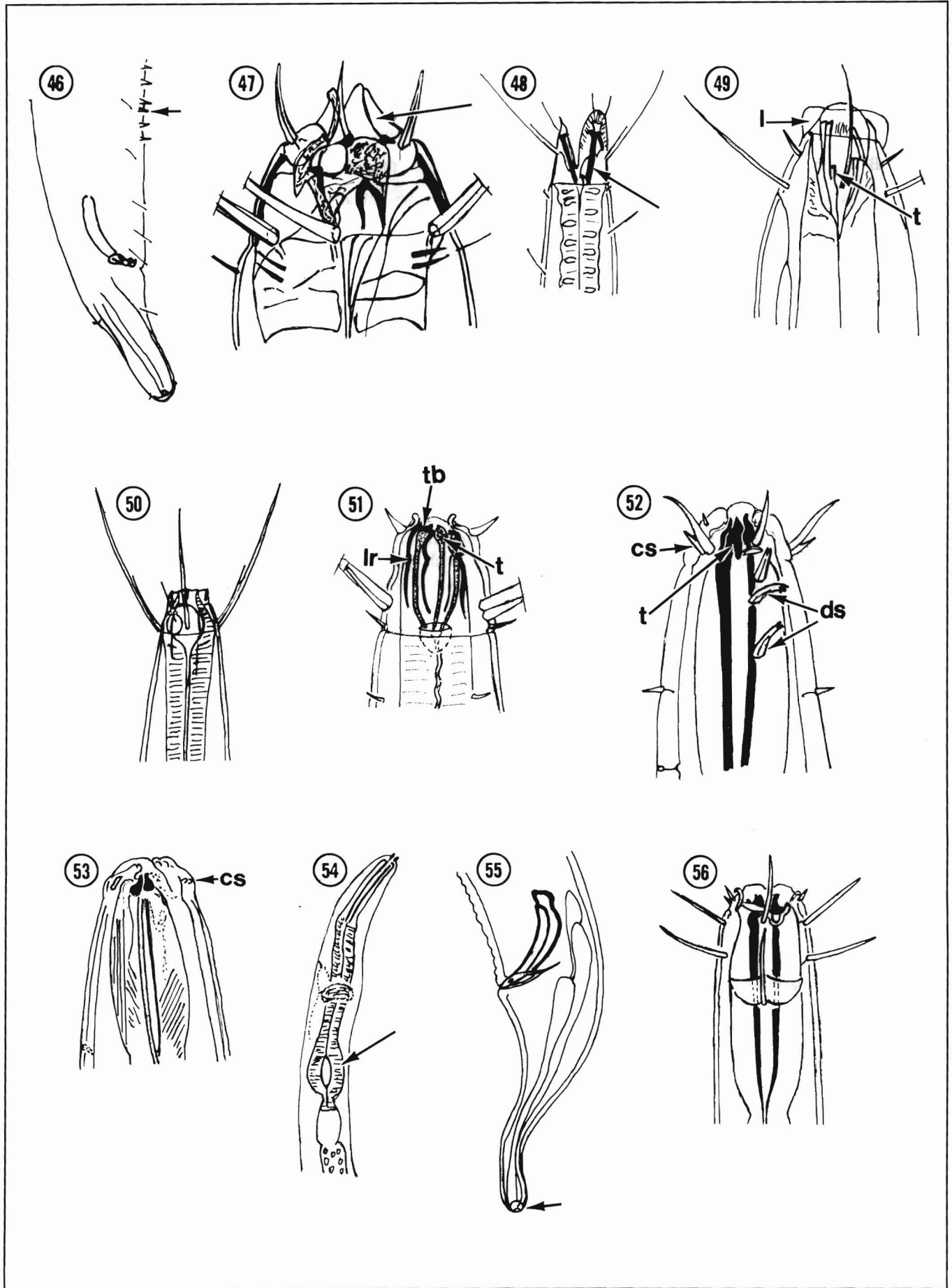
	f(a)	Two flat setae situated near each amphid (22)	<i>Platycoma</i> Cobb, 1894
		Amphids not accompanied by two flat setae	g
	g(f)	Stoma large, with apical dentated band (23ab)	<i>Cycolaimus</i> De Man, 1889
		Stoma narrow (24st), with plates	h
	h(g)	Three large teeth present in addition to small teeth on plates (24t); gubernaculum large with dentate distal ends; precloacal region with long, stout ventrolateral setae in rows	<i>Macronchus</i> Inglis, 1964
		Three large teeth absent, small teeth present; gubernaculum small, without dentate distal ends; stout precloacal setae absent	i
	i(h)	Gubernaculum with two large apophyses (25ap)	<i>Corythostoma</i> Hope and Murphy, 1972
		Gubernaculum without two large apophyses (26g)	<i>Synonchus</i> Cobb, 1894
8(4)	A	Stoma with a long, sharply pointed spear (27sp). (Family Thoracostomopsidae)	<i>Thoracostomopsis</i> Ditlevsen, 1918
	B	Spear absent	9
9(8)	A	Stoma with three mandibles (28m). (Family Enoplidae)	10
	B	Stoma without three mandibles	Phanodermatidae
	a	Cephalic capsule trilobed (29cc)	b
		Cephalic capsule not trilobed	f
	b(a)	Cephalic capsule strongly developed, with or without striations (30cc)	c
		Cephalic capsule weakly developed	d
	c(b)	Gubernaculum with dorsal apophysis (31ap)	<i>Dayellus</i> Inglis, 1964
		Gubernaculum without dorsal apophysis	<i>Phanoderma</i> Bastian, 1865
	aa	Ocelli present	<i>Phanoderma</i> Bastian, 1865
		Ocelli absent	<i>Alyncoides</i> Wieser, 1953
	d(b)	Cephalic capsule with three movable, labial lobes; labial papillae prominent; spicules elongate; precloacal supplement present (32)	<i>Klugea</i> Filipjev, 1927
	aa	Ocelli present	<i>Nasinema</i> Filipjev, 1927
		Ocelli absent	<i>Klugea</i> Filipjev, 1927
		Cephalic capsule without three movable, labial lobes; labial papillae not prominent; precloacal supplement present or absent	e
	e(d)	Spicules long; tubular precloacal supplement absent	<i>Phanodermopsis</i> Ditlevsen, 1926
		Spicules short; tubular precloacal supplement present (33)	<i>Phanodermella</i> Kreis, 1928
	f(a)	Precloacal supplement present in male	<i>Micoletzkyia</i> Ditlevsen, 1926
		Precloacal supplement absent in male	<i>Crenopharynx</i> Filipjev, 1934
10(9)	A	Labial setae short, papilliform (28ls), teeth absent. (Subfamily Enoplinae, one genus)	<i>Enoplus</i> Dujardin, 1845
	B	Labial setae long, stout, setose (34ls); teeth present (34t)	11
11(10)	A	Lips relatively raised, conical (34l)	Enoploidinae
	a	Anterior end of subventral teeth long, extending to or beyond anterior end of mandibles (35)	b
		Anterior end of subventral teeth located far posterior to anterior end of mandibles	f
	b(a)	Anterior end of subventral teeth at level of anterior end of mandibles	c
		Anterior end of subventral teeth extending beyond anterior end of mandibles	d



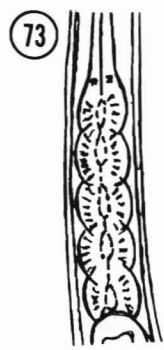
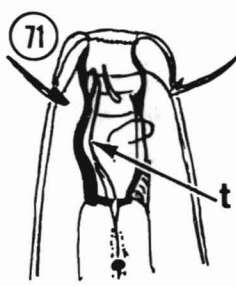
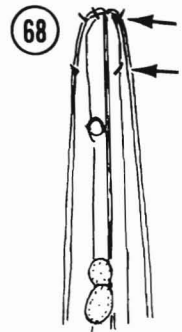
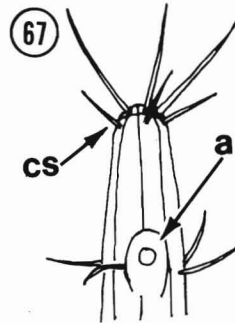
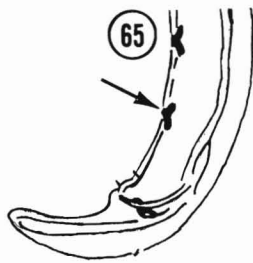
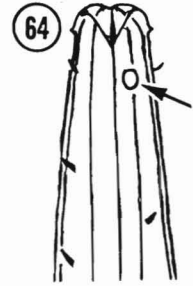
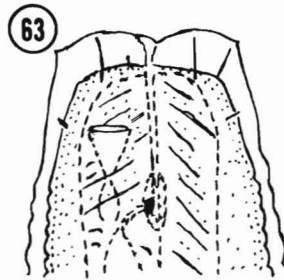
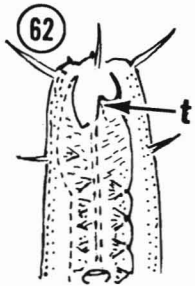
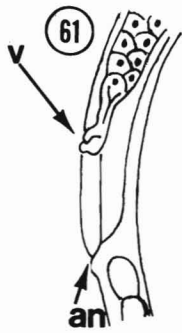
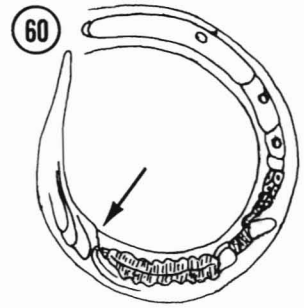
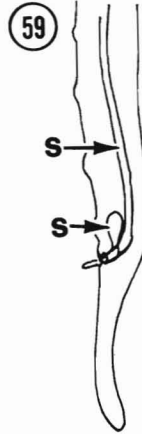
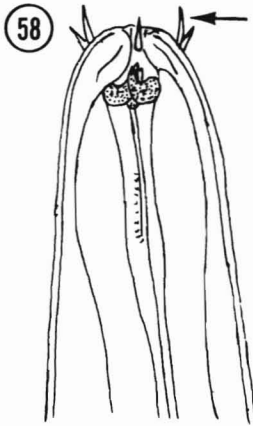
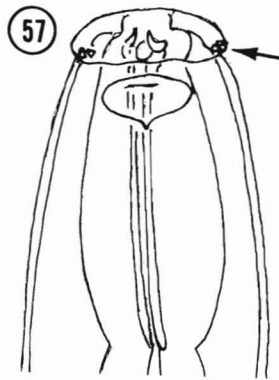
- c(b) Mandibles arch-shaped, posterior apophyses absent (36) *Oxyonchus* Filipjev, 1927
Mandibles not arch-shaped, posterior apophyses present (37ap) *Filipjevia* Kreis, 1928
- d(b) Mandibles well developed (35m) *Parasaveljevia* Wieser, 1953
Mandibles reduced or vestigial e
- e(d) Dorsal tooth reduced (38dt), subventral teeth larger (38svt); labial setae not bulbous
..... *Saveljevia* Filipjev, 1927
Dorsal tooth not reduced, larger and more cuticularized than subventrals; labial setae bulbous (39)
..... *Gairleanema* Warwick and Platt, 1973
- f(a) Teeth reduced, visible only in juveniles; anterior end of mandibles without claws (40)
..... *Parenoplus* Filipjev, 1927
Teeth distinct at all stages (43t); mandibles well developed with claws (43cl) g
- g(f) Mandibles arch-shaped, with two longitudinal rods or plates (41lr) connected by anterior bar (41b); if
anterior bar missing, rods separated by a narrow space (42) h
Mandibular rods more solid, not as thin as above (34m) l
- h(g) Cephalic setae originate from base of cephalic capsule (43cc) *Enoplolaimus* De Man, 1893
Cephalic setae originate anterior to base of cephalic capsule (44) i
- i(h) Cephalic setae originate from middle or anterior end of cephalic capsule j
Cephalic setae originate anterior to anterior end of cephalic capsule (45)
..... *Paramesacanthion* Wieser, 1953
- j(i) Longitudinal elements of mandibles rod-like, transverse anterior bar always present (41b) k
Longitudinal elements of mandibles plate-like, transverse anterior bar present or absent; if absent,
longitudinal elements separated by a narrow space (42) *Epacanthion* Wieser, 1953
- k(j) Precloacal supplement absent, in its place a row of short stout setae (46)
..... *Africanthion* Inglis, 1964
Precloacal supplement present or absent; if absent, midventral row of stout setae also absent
..... *Mesacanthion* Filipjev, 1927
- l(g) Lips unstriated (47) *Mesacanthoides* Wieser, 1953
Lips striated (34str) m
- m(l) Mandibles not extremely slender or elongate (ratio length-to-width at middle of shaft <10)
..... *Enoploides* Saveljev, 1912
Mandibles elongate, slender (ratio length-to-width \geq 10) (48) *Metenoploides* Wieser, 1953
- B** Lips low, flattened (49l) *Rhabdodemaniinae*
- a Stoma with teeth b
Stoma without teeth (50) *Chaetonema* Filipjev, 1927
- b(a) Mandibles reduced to three rod-like structures or three paired teeth anteriorly; teeth also present posterior
in stoma (49t) *Rhabdodemia* Baylis and Daubney, 1926
Mandibles with two longitudinal rods (51lr) connected by an anterior, transverse bar (51tb); teeth at level
of anterior bar (51t) *Trileptium* Cobb, 1933
- 12(3)** **A** Stoma narrow, amphids small, body not tapered anteriorly 13
B Stoma almost absent, amphids small to large, rounded to longitudinal; body tapered anteriorly (5). (Superfamily
Oxystominoidea) 17
- 13(12)** **A** Stoma elongate-tubular with parallel walls; three claw-like teeth at anterior end of stoma (52t). (Family
Ironidae) 14
B Stoma funnel- or barrel-shaped; teeth, when present, arising from walls of stoma 15



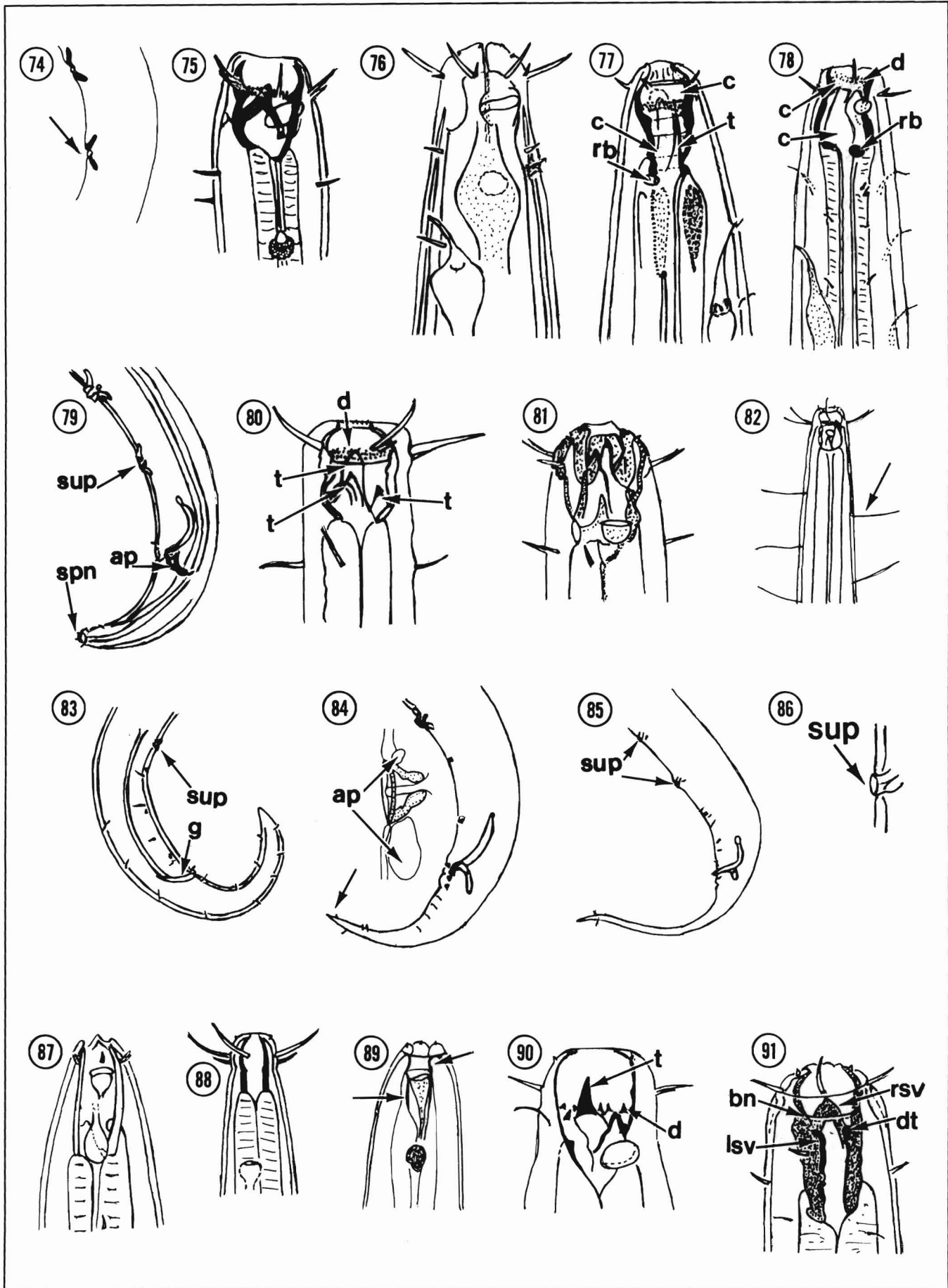
- 14(13) A Cephalic sensillae papilliform (53cs) **Ironinae**
- a Esophagus with distinct posterior bulb (54) *Syringolaimus* De Man, 1888
 Esophagus without posterior bulb b
- b(a) Female gonad monodelphic, opisthodelphic *Trissonchulus* Cobb, 1920
 Female gonad didelphic, amphidelphic c
- c(b) Spinneret present, marine (55) *Dolicholaimus* De Man, 1888
 Spinneret absent, freshwater *Ironus* Bastian, 1865
- B Cephalic sensillae setiform (52cs) **Thalassironinae**
- a Cephalic setae long, in two well-separated circles of 6+4 (56) *Ironella* Cobb, 1920
 Cephalic setae in single circle of 10 b
- b(a) Caudal glands and spinneret present d
 Caudal glands and spinneret absent c
- c(b) Cephalic setae short (57) *Pheronus* Inglis, 1966
 Cephalic setae long (58) *Parironus* Micoletzky, 1930
- d(b) Cephalic setae long or short; if long, cervical setae doubled (52ds); spicules short and equal in length
 *Thalassironus* De Man, 1889
 Cephalic setae long, cervical setae not doubled; spicules unequal in length, one exceedingly long (59s)
 *Conilia* Gerlach, 1956
- 15(13) A Female genital duct opening (vulva) well separated from anus 16
- B Female genital duct united with rectum forming a cloaca or vulva immediately anterior to anus
 **Lauratonematidae**
- a Cloaca present in females (60) *Lauratonema* Gerlach, 1953
 Cloaca absent, vulva (61v) immediately anterior to anus (61an)
 *Lauratonemoides* De Coninck, 1965
- 16(15) A Stoma large, barrel-shaped or prismatic; esophagus muscular, areolated; stoma with large teeth (62). (Family
Prismatolaimidae) *Onchulus* Cobb, 1920
- B Stoma reduced (63), funnel-shaped or straight; esophageal tissue more or less homogenous; freshwater forms
(except one genus). (Family **Tripylidae**) *Tripyla* Bastian, 1865
- 17(12) A Amphids small, rounded (64); two ovaries; precloacal supplements large, knob-like or absent
 **Paroxystominidae**
- a Supplements large, knob-like (65) *Paroxystomina* Micoletzky, 1924
 Supplements absent *Maldivea* Gerlach, 1962
- B Amphids large to very large, of diverse shapes; one or two ovaries; precloacal supplements minute, setose, or
absent. (Family **Oxystominidae**) 18
- 18(17) A Amphids elongate, longitudinally slit (5a); precloacal supplements absent **Halalaiminae**
- a Caudal glands absent *Halalaimoides* Cobb, 1933
- b Caudal glands present *Halalaimus* De Man, 1888
- aa Distinct circle of labial setae (5ls) present *Nualaimus* Juario, 1974
 Distinct circle of labial setae absent bb



- bb(aa)** Cephalic setae in two well-separated circlescc
 Cephalic setae in two circles close together*Nuada* Southern, 1914
 (= *Tycnodora* Cobb, 1920)
- cc(bb)** Amphids narrow (width <40% of corresponding diameter)*Halalaimus* De Man, 1888
 Amphids wide (width ≥40% of corresponding diameter)*Pachydora* Wieser, 1953
- B** Amphids rounded (**66**), not longitudinally slit; if present, precloacal supplements setose ... **Oxystomininae**
- a** Amphids very large, almost circular, orifice narrow; cephalic setae in two circles of six or single circle of 10 or 12b
 Amphids never very large; 10 cephalic setae in two circlesc
- b(a)** Cephalic setae in two circles of six each, circles close together*Litinium* Cobb, 1920
 Cephalic setae in single circle of 10 or 12*Thalassolaimus* De Man, 1893
- c(a)** Cephalic setae in two circles close together (**67cs**); circle of long cervical setae at level of amphids (**67a**)*Wieseria* Gerlach, 1956
 Cephalic setae in two well-separated circles; without circle of long cervical setae at level of amphids (**68cs**)d
- d(c)** Tail short, rounded (**69**)*Nemanema* Cobb, 1920
 Tail long, attenuated (**70**)*Oxystomina* Filipjev, 1921
- 19(2)** **A** Esophagus may be significantly enlarged posteriorly, occasionally with posterior bulb or multibulbar; sexual dimorphism in stoma present or absent; if present, male stoma reduced; stoma with single large tooth (**71t**) or three unequal teeth (**80t**), denticles may be present (**80d**); if so, male supplements may be knob-like, cuticularized. (**Superfamily Enchelidoidea**)20
- B** Esophagus cylindrical or clavate, not significantly enlarged posteriorly, never multibulbar; sexual dimorphism in stoma absent; stoma unarmed or with three teeth (**72**), denticles may be present (one genus); male supplements papilloid, not cuticularized if present24
- 20(19)** **A** Esophagus with a row of moniliform bulbs (**73**)**Bolbellidae**
- a** Male supplements papilloid; sexual dimorphism in stoma (males reduced) present in some species...
*Polygastrophora* De Man, 1922
 Male supplements cup-like, large (**74**); sexual dimorphism in stoma absent
*Bolbellia* Gerlach and Riemann, 1974
 (= *Belbolla* Andrásy, 1976 = *Bolbella* Cobb, 1920)
- B** Esophagus without row of bulbs21
- 21(20)** **A** Stoma in both sexes spacious, about as long as wide; one to three teeth present; tooth, if single, originating from base of stoma (**75**). (**Family Eurystominidae**)22
- B** Stoma of female longer than wide; single tooth lies on wall of stoma (**77t**); stoma of males rudimentary (**76**). (**Family Enchelidiidae**)**Enchelidiinae**
- a** Female stoma narrow, almost cylindrical; solid transverse stomatal rings present giving appearance of more than two chambers (**77c**)b
 Female stoma broader, divided into two unequal chambers (**78c**) by a transverse band, a ring or row of denticles (**78d**); other rings, if present, faint and located posteriorlyc
- b(a)** Transverse row of denticles in anterior portion of stoma; refractive body absent
*Symplocostomella* Micoletzky and Kreis, 1930
 Anterior transverse stomatal ring solid rather than denticular; refractive body present (**77rb**)
*Symplocostoma* Bastian, 1865

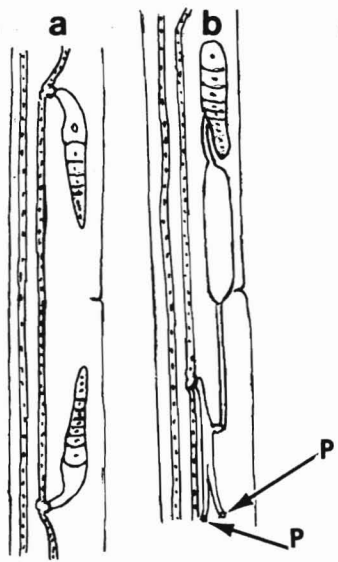


- c(a) Posterior part of stoma longer than anterior part, asymmetrical; refractive body present (78rb)
Calyptronema Marion, 1870
 Posterior portion of stoma conical, symmetrical; refractive body absent
Conistomella Stekhoven, 1942
- 22(21) A Stoma with single, large subventral tooth originating from base of stoma; male preloacal supplements present (79sup) 23
- B Stoma with three unequal teeth (80t); male preloacal supplements absent *Thoonchinae*
- a Stoma with transverse rows of denticles (80d) *Thoonchus* Cobb, 1920
 Stoma without transverse rows of denticles (81) *Ditlevsenella* Filipjev, 1925
- 23(22) A Caudal glands and spinneret (79spn) present *Eurystomininae*
- a Cervical setae extremely long (82), longer than corresponding body diameter
Ledovitia Filipjev, 1927
 Cervical setae less than corresponding body diameter (75) b
- b(a) Preloacal supplements (83sup) and gubernaculum (83g) without apophyses
Gerlachystomina Inglis, 1962
 Preloacal supplements and gubernaculum with apophyses *Eurystomina* Filipjev, 1921
- B Caudal glands and spinneret absent (84) *Pareurystomininae*
- a Tail conical; preloacal supplements cup-shaped with apophyses (84ap)
Pareurystomina Micoletzky and Kreis, 1930
 Tail flagellate (85); preloacal supplements tubular, without apophyses (86sup)
Batheurystomina Lambshead and Platt, 1979
- 24(19) A Stoma unarmed or with minute teeth (87). (Superfamily Pelagonematoidea, Family Pelagonematidae) 25
- B Stoma armed with one to three large teeth (1t). (Superfamily Oncholaimoidea, Family Oncholaimidae) 26
- 25(24) A Female gonad monodelphic, opisthodelphic; tail filiform. (Subfamily Curvolaiminae)
Curvolaimus Wieser, 1953
- B Female gonads didelphic, amphidelphic; tail not filiform *Pelagonematinae*
- a Stoma small, short, cup-shaped, nearly as wide as long
Bradybucca Stekhoven, 1956
 (= *Anoncholaimus* Stekhoven, 1950)
 Stoma large, longer than wide b
- b(a) Head with three lips; stoma cylindrical (88); males with bursa *Anoplostoma* Bütschli, 1874
 Head with six lips; stoma cup-shaped or with curved or bipartite walls; males without bursa c
- c(b) Stoma in two tandem parts (89) *Illium* Cobb, 1920
 (= *Pseudopelagonema* Kreis, 1932)
 Stoma not in two tandem parts d
- d(c) Esophagus with posterior bulb *Pelagonemella* Kreis, 1932
 Esophagus without posterior bulb *Pelagonema* Cobb, 1894



- 26(24) A** Stoma with one large tooth (**90t**) and numerous smaller, well-developed denticles (**90d**). (Subfamily Octonchinae)
 *Octonchus* Clark, 1961
 (= *Polydontus* Schulz, 1932)
- B** Stoma with one to three well-developed teeth, denticles absent 27
- 27(26) A** Stoma with three teeth; right subventral very large (**91rsv**), left subventral (**91lsv**) and dorsal (**91dt**) reduced or even greatly reduced; males may have copulatory bursa; gubernaculum absent; demanian system (**92a,b**) present or absent; if present, without exit pores (**92a**) **Oncholaimellinae**
- a** Females with one ovary; if present, bursa of males supported by long, knobbed papillae (**93**) **b**
 Females with two ovaries; if present, bursa of males not supported by long, knobbed papillae; circumcloacal setae present **c**
- b(a)** Stoma large, not cup-shaped; bursa in males supported by long, knobbed papillae (**93**)
 *Oncholaimelloides* Timm, 1969
 Stoma small, cup-shaped (**94st**); bursa absent *Krampia* Ditlevsen, 1921
- c(a)** Cuticle with distinct annules (**95**), longitudinal striations distinct or indistinct
 *Oncholaimoides* Chitwood, 1937
 Cuticle without distinct transverse annulations or longitudinal striations **d**
- d(c)** Right subventral tooth large, almost fills stomatal cavity (**91rsv**); left subventral (**91lsv**) and dorsal teeth (**91dt**) small, not elongate; bursa present or absent **e**
 Right subventral tooth not as large as above (**96rsv**); left subventral (**96lsv**) and dorsal teeth (**96dt**) reduced but elongate, distinct; small bursa present (**97**) or absent *Viscosia* De Man, 1890
- e(d)** Right subventral tooth heavily cuticularized; stoma divided transversely by cuticularized band (**91bn**); spicules moderate to very long; bursa present or absent *Oncholaimellus* De Man, 1890
 Right subventral tooth (**98rsv**) not as heavily cuticularized; dorsal (**98dt**) and left subventral (**98lsv**) teeth greatly reduced; stoma not divided transversely by cuticularized band; bursa absent; circumcloacal setae present; spicules short, about one anal diameter long, straight *Mononcholaimus* Kreis, 1924
- B** Stoma with three teeth, equal or unequal in size; if subventrals unequal, left largest; right subventral and dorsal never greatly reduced; bursa absent; gubernaculum present or absent; demanian system present (**92a,b**) or absent, exit pores present (**92b,p**) or absent **Oncholaiminae**
- a** Subcuticular trabeculae present (**99**) *Prooncholaimus* Micoletzky, 1924
 Subcuticular trabeculae absent **b**
- b(a)** Females with two ovaries **c**
 Females with one ovary **h**
- c(b)** Demanian system absent **d**
 Demanian system present **e**
- d(c)** Tail short (**100**); gubernaculum present *Pontonema* Leidy, 1885
 Tail long, filiform; gubernaculum absent *Filoncholaimus* Filipjev, 1927
- e(c)** Demanian system exit pore single, at level of vulva; subventral teeth equal (**101svt**), larger and anterior to dorsal (**101dt**); gubernaculum present (**102**) *Meyersia* Hopper, 1967
 Demanian system exit pores two or more (**92b,p**), posterior to vulva; teeth variable; gubernaculum present or absent **f**
- f(e)** Subventral teeth equal, smaller than dorsal; spicules very long and thin (**103**); gubernaculum absent
 *Metoncholaimoides* Wieser, 1953
 Subventral teeth equal or unequal, larger or equal to dorsal; gubernaculum present **g**

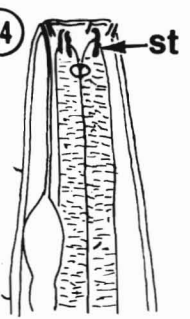
92



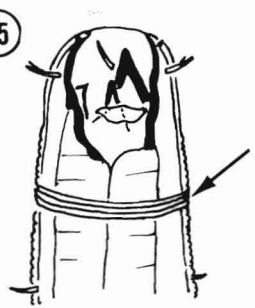
93



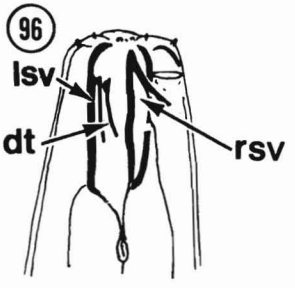
94



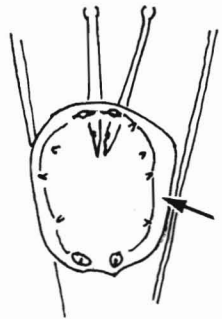
95



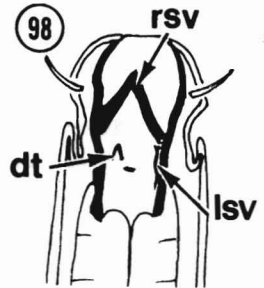
96



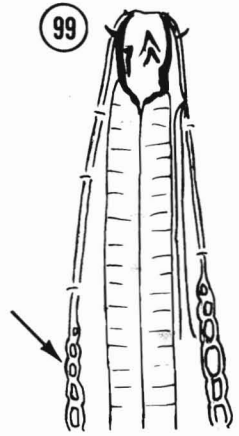
97



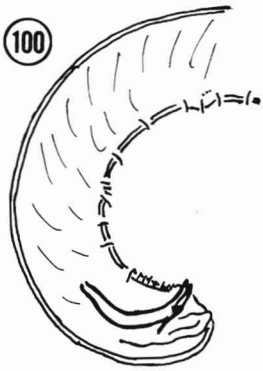
98



99



100



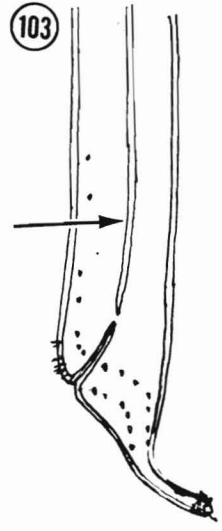
101



102



103



- g(f)** Stoma about three times as long as wide; gubernaculum small *Kreisoncholaimus* Rachor, 1969
 Stoma about two times as long as wide (104); gubernaculum larger (105) *Adoncholaimus* Filipjev, 1918
- h(b)** Demanian system absent; spicules short; gubernaculum absent (106) *Pseudoncholaimus* Kreis, 1932
 Demanian system present; spicules variable; gubernaculum present or absent i
- i(h)** Spicules short; gubernaculum absent j
 Spicules moderate to very long; gubernaculum present or absent k
- j(i)** Subventral teeth equal (107svt) or unequal; males with well-developed, fleshy or papilloid precloacal organ (108); demanian system with exit pores (92b,p) *Oncholaimium* Cobb, 1930
 Subventral teeth equal or unequal; males without well-developed precloacal organ; demanian system without exit pores *Oncholaimus* Dujardin, 1845
- k(i)** Subventral teeth equal and larger than dorsal; spicules moderate to long; gubernaculum present or absent l
 Subventral teeth unequal; spicules moderate to greatly elongate (setaceous) (109); gubernaculum present or absent *Metoncholaimus* Filipjev, 1918
- l(k)** Spicules medium length; gubernaculum small (110) *Metaparoncholaimus* De Coninck and Stekhoven, 1933
 Spicules long, slender; gubernaculum large (111) *Wiesoncholaimus* Inglis, 1966
- 28(1) A** Stoma with two chambers (112c); teeth present (112t) or absent; gubernaculum (113g) very large, equal to or larger than spicules (113s); cephalic setae in single circle of 10 setae *Tripyloidea*
- a** Cephalic setae short, thick, distinctly segmented; stoma funnel-shaped (112c); teeth present or absent b
 Cephalic setae long, thin, indistinctly segmented; anterior portion of stoma large, globular (114); teeth present or absent *Bathylaimus* Cobb, 1893
- b(a)** Posterior chamber of stoma with teeth (112t) *Tripyloides* De Man, 1886
 Posterior chamber of stoma without teeth *Paratripyloides* Stekhoven, 1950
- B** Stoma not divided into two chambers (115); teeth absent; gubernaculum smaller than spicules; cephalic setae in single circle of six or in two circles of 6+4. (Family *Trefusiidae*) 29
- 29(28) A** Stoma large, barrel-shaped; lips large, with three large circular structures (116cir); cephalic setae very short (116cs). (Subfamily *Halanonchinae*) *Halanonchus* Cobb, 1920
- B** Stoma narrow, not barrel-shaped (115st); lips small, without circular structures; cephalic setae longer (115cs) *Trefusiinae*
- a** Amphids circular; gubernaculum present b
 Amphids oblong with posteriorly directed pouch (115a); gubernaculum absent c
- b(a)** Amphids closed circles (117); females with one ovary *Rhabdocoma* Cobb, 1920
 Amphids open circles (118); females with two ovaries *Cytolaimium* Cobb, 1920
- c(a)** Male with two testes *Trefusia* De Man, 1893
 Male with one testis *Trefusialaimus* Riemann, 1974

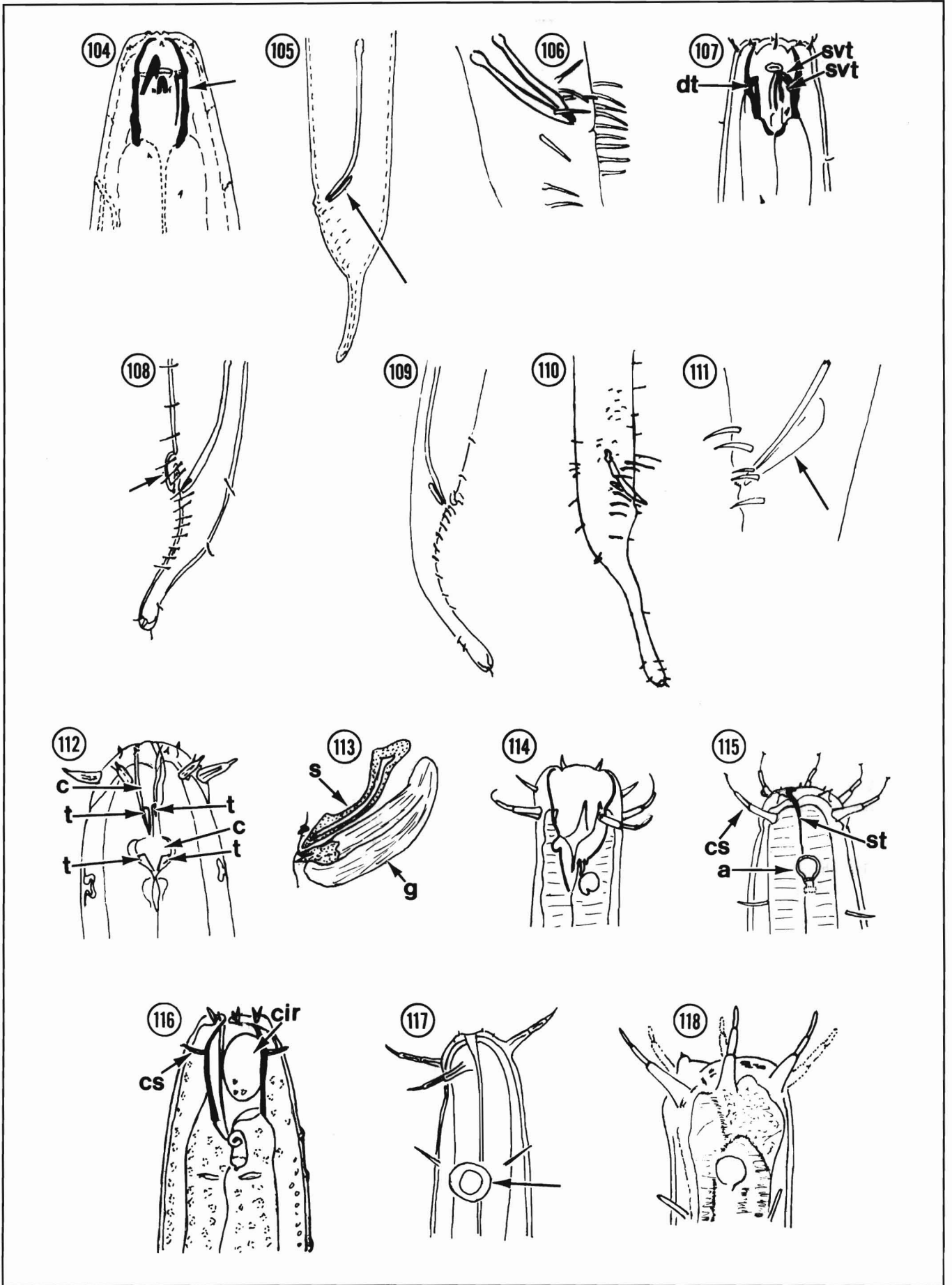


Illustration sources

Fig. no.	Reference
1	Wieser 1959, fig. 26d
2	Keppner 1986, fig. 35, p. 333
3	Wieser 1953, fig. 35c, p. 69
4	Andrássy 1968, fig. c, p. 213
5	Wieser and Hopper 1967, fig. 3a, p. 309
6	Original drawing
7	Bongers 1983, fig. 10A, p. 827
8	Wieser 1954, fig. 2b, p. 176
9	Gerlach 1956b, fig. d, tafel 26
10	Inglis 1964, fig. 134, p. 361
11	Micoletzky 1930, fig. 5c, p. 268
12	Micoletzky 1930, fig. 4a, p. 262
13	Wieser 1953, fig. 3d, p. 18
14	Hope and Murphy 1969, fig. 2B, p. 514
15	Platonova and Gal'tsova 1976, fig. 53, p. 145
16	Inglis 1964, fig. 2, p. 274
17	Vitiello 1970, fig. 2a, p. 141
18	Vitiello 1970, fig. 6b, p. 145
19	Vitiello 1970, fig. 3b, p. 141
20	Bongers 1984, fig. 2B, p. 19
21	Bongers 1983, fig. 15B, p. 835
22	Inglis 1966, fig. 1, p. 84
23	Schuurmans-Stekhoven 1935, fig. 72A, p. 11
24	Inglis 1964, fig. 141, p. 362
25	Hope 1967, fig. 3D, p. 9
26	Platt and Warwick 1983, fig. 83c, p. 187
27	Inglis 1964, fig. 104, p. 357
28	Inglis 1964, fig. 110, p. 358
29	Inglis 1964, fig. 38, p. 346
30	Steiner 1921, fig. 6a, tafel 12
31	Inglis 1964, fig. 42, p. 346
32	Wieser 1953, fig. 29b, p. 57
33	Vitiello 1970, fig. 31e, p. 179
34	Wieser and Hopper 1967, fig. 10a, p. 312
35	Wieser 1959, fig. 35c, p. 69
36	Bresslau and Schuurmans-Stekhoven 1940, fig. 17C, tafel IV
37	Kreis 1928, fig. 13b, p. 195
38	Gerlach 1956b, fig. i, tafel 28
39	Warwick and Platt 1973, fig. 11a, p. 152
40	Wieser 1953, fig. 37a, p. 71
41	Inglis 1966, fig. 10, p. 86
42	Inglis 1966, fig. 13, p. 90
43	Original drawing
44	Inglis 1966, fig. 13, p. 90
45	Vitiello 1970, fig. 34a, p. 184
46	Inglis 1964, fig. 94, p. 355
47	Wieser and Hopper 1967, fig. 13a, p. 313
48	Wieser 1953, fig. 52b, p. 93
49	Wieser 1959, fig. 2a, plate 1
50	Wieser 1953, fig. 54a, p. 93
51	Original drawing
52	Original drawing
53	Van der Heiden 1974, fig. 3A, p. 426
54	Chitwood 1951, fig. 91, p. 647
55	Wieser 1953, fig. 57d, p. 97
56	Original drawing
57	Inglis 1966, fig. 17, p. 94
58	Boucher 1971, fig. 1A, p. 976
59	Gerlach 1956a, fig. 51, p. 38
60	Gerlach 1953, fig. 5, p. 46
61	Gerlach 1956b, fig. b, tafel 26
62	Andrássy 1964, fig. a, p. 31
63	Brzeski 1964, fig. 1, p. 160
64	Wieser 1953, fig. 22a, p. 45
65	Wieser 1953, fig. 22b, p. 45
66	Gerlach 1962, fig. i, tafel 4
67	Gerlach 1956b, fig. i, tafel 26
68	Platt and Warwick 1983, fig. 88A, p. 199
69	Platt and Warwick 1983, fig. 88E, p. 199
70	Gerlach 1962, fig. f, tafel 4
71	Wieser and Hopper 1967, fig. 27A, p. 321
72	Schuurmans-Stekhoven and Adam 1931, fig. 3, plate 5
73	Timm 1952, fig. 25, p. 17
74	Wieser 1953, fig. 83d, p. 137
75	Timm 1961, fig. 16A, p. 41
76	Jensen 1986, fig. 6a, p. 98
77	Micoletzky 1930, fig. 17, p. 310
78	Hopper and Meyers 1967, fig. 9, p. 492
79	Wieser 1959, fig. 87d, p. 141
80	Gerlach 1954a, fig. 3A, tafel 89
81	Riemann 1966, fig. 52f, p. 191
82	Wieser 1953, fig. 83b, p. 137
83	Gerlach 1954b, fig. 1b, p. 98
84	Original drawing
85	Lamshead and Platt 1979, fig. 2c, p. 375
86	Lamshead and Platt 1979, fig. 2f, p. 375
87	Vitiello 1970, fig. 46a, p. 198
88	Original drawing
89	Wieser and Hopper 1967, fig. 25a, p. 320
90	DeConinck 1965, fig. 472, p. 661
91	Original drawing
92	Hope 1974, fig. 11, p. 417
93	Murphy 1966, fig. 1d, p. 30
94	Bresslau and Schuurmans-Stekhoven 1940, fig. 21A, tafel 5
95	Original drawing
96	Wieser and Hopper 1967, fig. 23a, p. 319
97	Wieser and Hopper 1967, fig. 22f, p. 319
98	Original drawing
99	Original drawing
100	Hopper and Meyers 1967, fig. 8, p. 492
101	Hopper 1967, fig. 12, p. 148
102	Original drawing
103	Wieser 1959, fig. 74a, p. 125
104	Hopper 1969, fig. 1, p. 677
105	Hopper 1969, fig. 2, p. 677
106	Belogurov et al. 1972, fig. 1, p. 1451
107	Wieser and Hopper 1967, fig. 16a, p. 315
108	Wieser and Hopper 1967, fig. 15c, p. 315
109	Original drawing
110	Mawson 1958, fig. 38c, p. 352
111	Inglis 1966, fig. 34, p. 99
112	Gerlach 1965, fig. 31a, tafel 155
113	Original drawing
114	Original drawing
115	Keppner 1986, fig. 29, p. 330
116	Wieser and Hopper 1967, fig. 5a, p. 310
117	Platt and Warwick 1983, fig. 133A, p. 289
118	Cobb 1920, fig. 31, p. 251

References for illustration sources

- Andrássy, I.**
1964 Onchulidae n. fam., eine neue Familie der Ordnung Enoplida (Nematoda). *Opusc. Zool. (Budap.)* 5(1): 25-41.
1968 Fauna Paraguayensis 2. Nematoden aus den Galeriewaldern des Acaray-Flusses. *Opusc. Zool. (Budap.)* 8(2): 167-315.
- Belogurov, I.O., L.S. Belogurova, and A.V. Leonova**
1972 The review of the genus *Pseudoncholaimus* (Nematoda: Oncholaimidae) with reference of monodelphness of nematodes and heterotopy of the female genital pore. *Zool. Zh.* 51(10):1450-1456.
- Bongers, T.**
1983 Revision of the genus *Leptosomatium* Bastian, 1865 (Nematoda: Leptosomatidae). *Proc. Biol. Soc. Wash.* 96(4):807-855.
1984 Revision of the genus *Leptosomatides* Filipjev, 1918. *Proc. Biol. Soc. Wash.* 97(1):12-29.
- Boucher, G.**
1971 Deux espèces nouvelles de nématodes de la vase terrigène côtière de Banyul-sur-Mer. *Bull. Mus. Natl. d'Hist. Nat.* 2^e ser. 42(5):975-983.
- Bresslau, E., and J.H. Schuurmans-Stekhoven**
1940 Marine freilebende Nematoden aus der Nordsee. *Brux. Mus. Hist. Nat.* 1940:1-74.
- Brzeski, M.**
1964 Revision der gattung *Tripyla* Bastian and *Paratripyla* gen. n. (Nematoda, Tripylidae). *Ann. Zool. (Warsaw)* 22(7):157-178.
- Chitwood, B.G.**
1951 North American marine nematodes. *Texas J. Sci.* 4:617-672.
- Cobb, N.A.**
1920 One hundred new nemas. *Contrib. Sci. Nematol.* 9:217-343.
- De Coninck, L.A.P.**
1965 Classe de nématodes. In Grasse, P. (ed.), *Traité de Zoologie*, Vol. IV.
- Gerlach, S.A.**
1953 *Lauratonema* nov. gen., Vertreter einer neuen Familie mariner Nematoden aus dem Küstengrundwasser. *Zool. Anz.* 151(3-4):44-52.
1954a Les nématodes marins libres des eaux souterraines littorales d'Esposende (Portugal). *Vie Milieu* 4:83-94.
1954b Nouveaux nématodes libres des eaux souterraines littorales Françaises. *Vie Milieu* 4:94-110.
1956a Brasilianische Meeres-Nematoden 1. (Ergebnisse eines Studienaufenthaltes an der Universität Sao Paulo). *Bolm. Inst. Oceanogr. S. Paulo* 5:3-69.
1956b Diagnosen neuer Nematoden aus der Kieler Bucht. *Kiel. Meeresforsch.* 12:85-109.
1962 Freilebende Meeresnematoden von den Maldiven. *Kiel. Meeresforsch.* 18:81-108.
1965 Freilebende Meeresnematoden aus den Gezeitenzone von Spitzbergen. *Veroeff. Inst. Meeresforsch. Bremerhaven* 16:109-172.
- Hope, W.D.**
1967 A review of the genus *Pseudocella* Filipjev, 1927 (Nematoda: Leptosomatidae) with a description of *Pseudocella triaulolaimus* n. sp. *Proc. Helminthol. Soc. Wash.* 34(1):6-12.
1974 Nematodes. In Giese, A.C., and J.S. Pearse (eds.), *Reproduction of marine invertebrates*, p. 391-469. Acad. Press, New York.
- Hope, W.D., and D.G. Murphy**
1969 *Syringonomus typicus* new genus, new species (Enoplida: Leptosomatidae) a marine nematode inhabiting arenaceous tubes. *Proc. Biol. Soc. Wash.* 82:511-518.
- Hopper, B.E.**
1967 Free-living marine nematodes from Biscayne Bay, Florida, II. Oncholaimidae; Description of five new species and one new genus (*Meyersia*). *Mar. Biol.* 1:145-151.
1969 Marine nematodes of Canada. II. Marine nematodes from the Minas Basin-Scots Bay area of the Bay of Fundy, Nova Scotia. *Can. J. Zool.* 47:671-690.
- Hopper, B.E., and S.P. Meyers**
1967 Foliicolous marine nematodes on turtlegrass, *Thalassia testudinum* König, in Biscayne Bay, Florida. *Bull. Mar. Sci.* 17(2):471-517.
- Inglis, W.G.**
1964 The marine Enoplida (Nematoda): A comparative study of the head. *Bull. Brit. Mus. (Nat. Hist.) Zool.* 11(4): 266-376.
1966 Marine nematodes from Durbin, South Africa. *Bull. Br. Mus. (Nat. Hist.) Zool.* 14(4):79-106.
- Jensen, P.**
1986 The nematode fauna in the sulfide-rich brine seep and adjacent bottoms of the East Flower Garden, N. W. Gulf of Mexico. III. Enoplida. *Zool. Scr.* 15:93-99.
- Keppner, E.J.**
1986 New species of free-living marine nematodes (Nematoda: Enoplida) from Bay County, Florida, U.S.A. *Trans. Am. Microsc. Soc.* 105(4):319-337.
- Kreis, H.A.**
1928 Die freilebende marinen Nematoden der Spitzbergen-Expedition von F. Roemer und F. Schaudin im Jahre 1898. *Mitt. Zool. Mus. Berl.* 14(1):135-188.
- Lamshead, P.J., and H.M. Platt**
1979 *Batheurystomina*, a new genus of free-living marine nematodes (Enchelidiidae) from the Rockall Trough. *Cah. Biol. Mar.* 20:371-380.
- Mawson, P.M.**
1958 Free-living nematodes. Sect. 3: Enoploidea from subantarctic stations. *British, Australian, New Zealand Antarc. Res. Exped. Repts. Ser. B, Vol. VI, Pt. 14, p. 307-358.*
- Micoletzky, H.**
1930 Papers from Dr. Th. Mortensen's Pacific Expedition 1914-1916. LIII. Freilebende marine Nematoden von den Sunda-Inseln. I. Enoplidae. *Vidensk. Medd. Dan. Naturhist. Foren.* 87:243-339.
- Murphy, D.G.**
1966 An initial report on a collection of Chilean marine nematodes. *Mitt. Hamb. Zool. Mus. Inst.* 63:29-50.
- Platonova, T.A., and V.V. Gal'tsova**
1976 Nematodes and their role in the meiobenthos. *Akad. Nauk (Zool. Inst.), Moscow*, 366 p.

- Platt, H.M., and R.W. Warwick**
 1983 Free-living marine nematodes. Part I. British Enoplids. (Synopsis of the British Fauna no. 28). Cambridge Univ. Press, 307 p.
- Riemann, F.**
 1966 Die interstitielle Fauna im Elbe- Aestuar. Verbreitung und Systematik. Arch. Hydrobiol. 31:1-279.
- Schuurmans-Stekhoven, J.H.**
 1935 Nematoda: Systematischer Teil, Nematoda errantia. *In* Glimpe, G., and E. Wagler, Die Tierwelt der Nord und Ostsee. Leipzig 56:1-173.
- Schuurmans-Stekhoven, J.H., and W. Adam**
 1931 The free-living marine nemas of the Belgian coast. Mem. Mus. R. Hist. Nat. Belg. 49:1-58.
- Steiner, G.**
 1921 Ost-asiatische marine nematoden. Zool. Jahrb. Abt. Allge. Zool. Physiol. Tiere 44(3):195-226.
- Timm, R.W.**
 1952 A survey of the marine nematodes of Chesapeake Bay, Maryland. Chesapeake Biol. Lab. Publ. 95:1-70.
 1961 The marine nematodes of the Bay of Bengal. Proc. Pak. Acad. Sci. 1(1):1-88.
- Van Der Heiden, A.**
 1974 The structure of the anterior feeding apparatus in members of the Ironidae (Nematoda: Enoplida). Nematologica 20:419-436.
- Vitiello, P.**
 1970 Nématodes libres marins des vases profondes du golfe du Lion. I. Enoplida. Tethys 2(1):139-210.
- Warwick, R.W., and H.M. Platt**
 1973 New and little known marine nematodes from a Scottish sandy beach. Cah. Biol. Mar. 14:135-158.
- Wieser, W.**
 1953 Free-living marine nematodes. I. Enoploidea. Acta Univ. Lund Sect. II Med. Math. Sci. Rerum Nat. 49:1-155.
 1954 Beiträge zur Kenntnis der Nematoden submariner Höhlen. Österr. Zool. Z. 5:172-230.
 1959 Free-living nematodes and other small invertebrates from Puget Sound beaches. Univ. Wash. Publ. Biol. 19:1-179.
- Wieser, W., and B.E. Hopper**
 1967 Marine nematodes of the east coast of North America. I. Florida. Bull. Mus. Comp. Zool. Harv. Univ. 135: 239-344.