

OE ENERGY MARKET SNAPSHOT

Northeast States Version – August 2008 Data

- **Special Report**
- **Market Fundamentals**
- **Prices and Market Analysis**

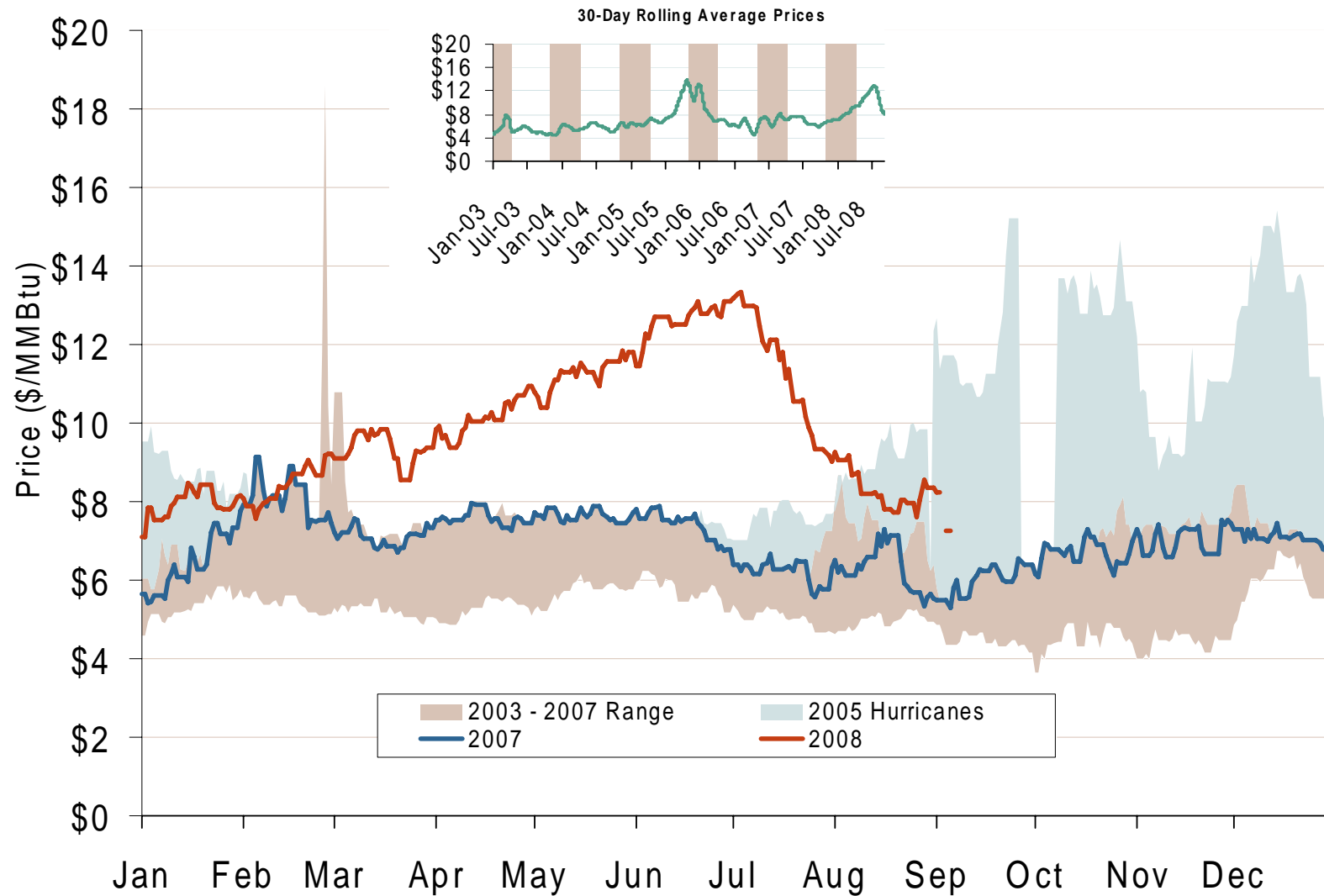
Office of Enforcement
Federal Energy Regulatory Commission
September 2008



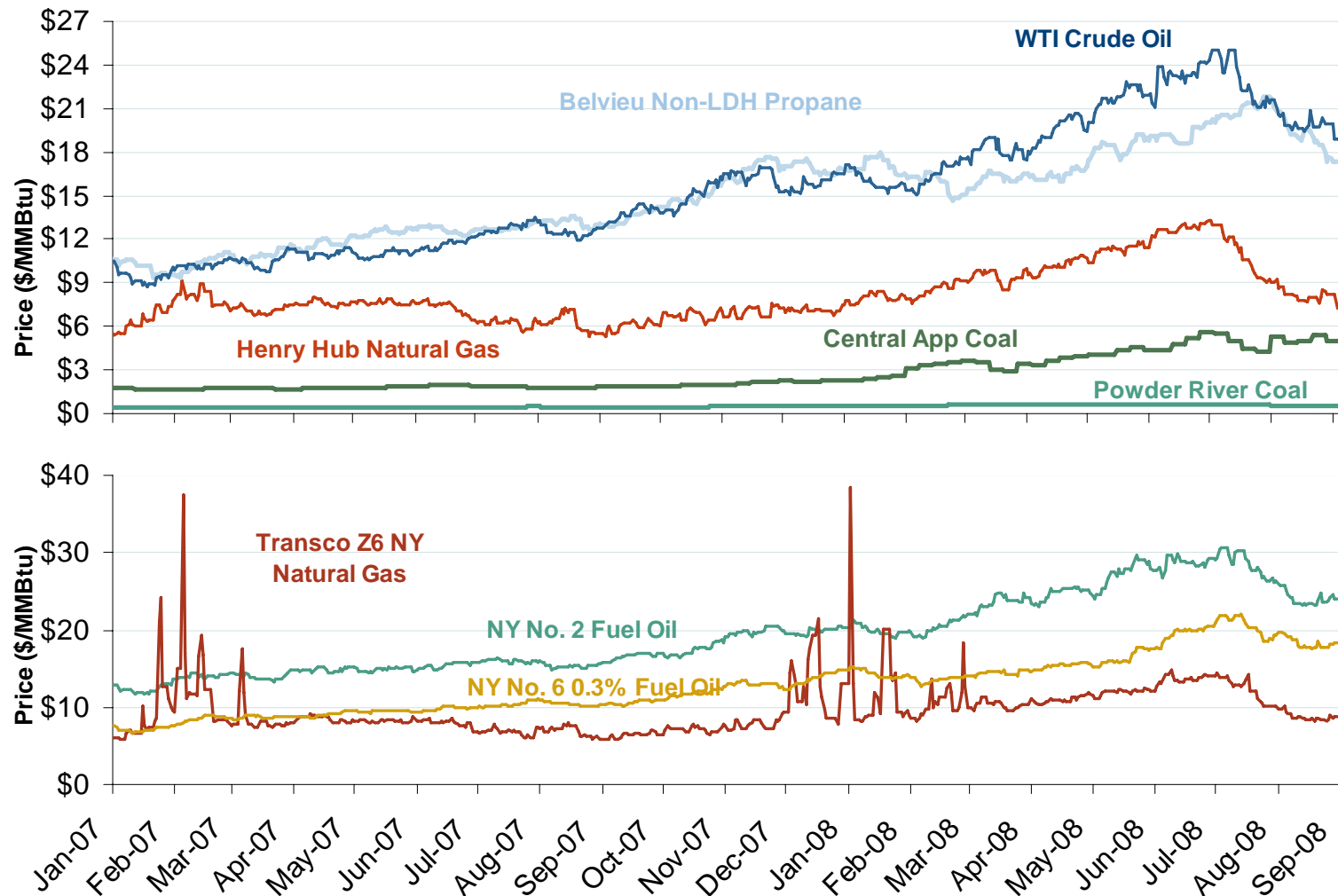
Special Report:

Natural Gas Price Decline II

Henry Hub Natural Gas Daily Spot Prices 2007, 2008 and 2003-2007 Year Range



Oil, Coal, Natural Gas and Propane Daily Spot Prices

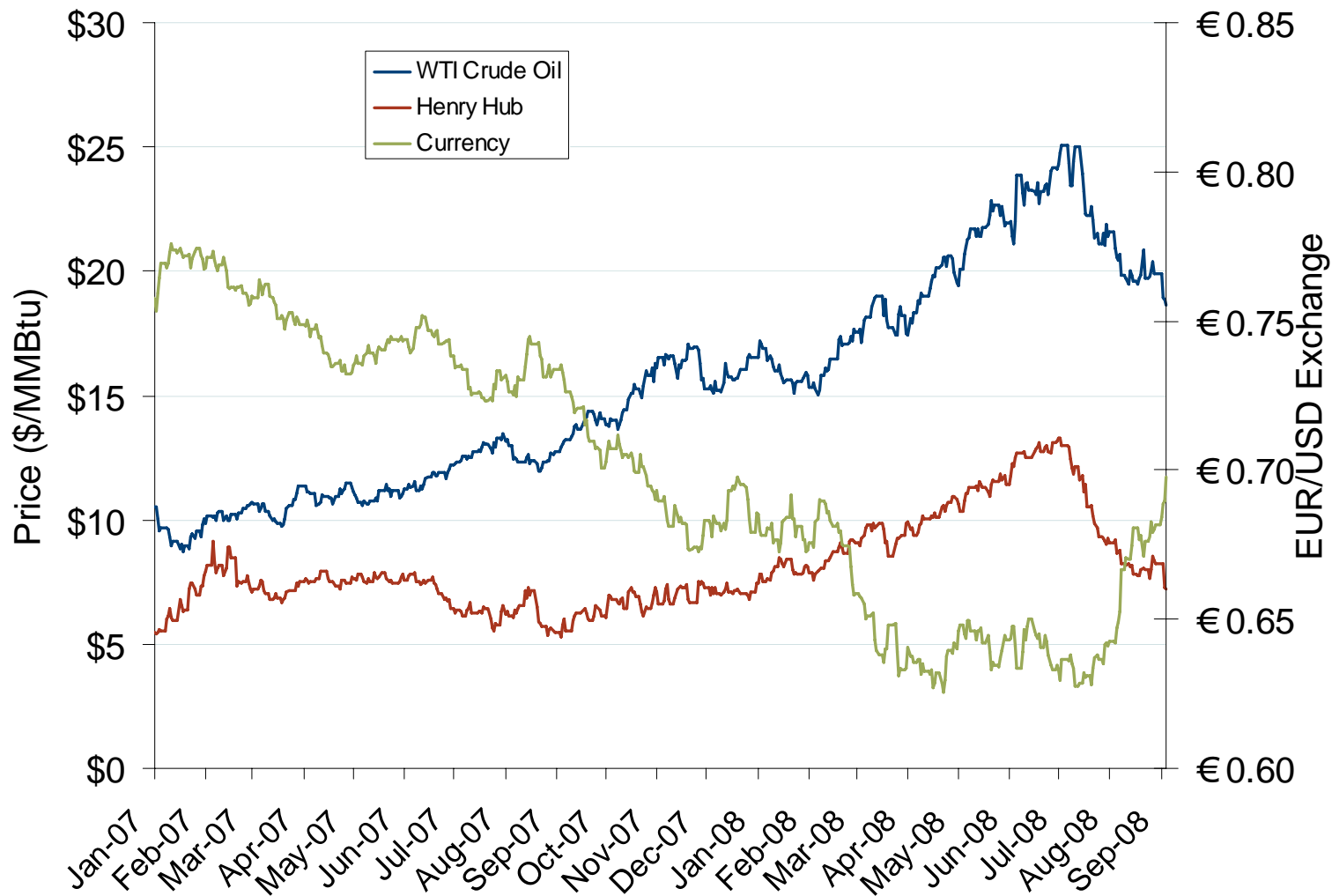


Source: Derived from ICE and Bloomberg data.

Note: Coal prices are quoted in \$/ton. Conversion factors to \$/MMBtu are based on contract specifications of 12,000 btus/pound for Central Appalachian coal and 8800 btus/pound for Powder River Basin coal.

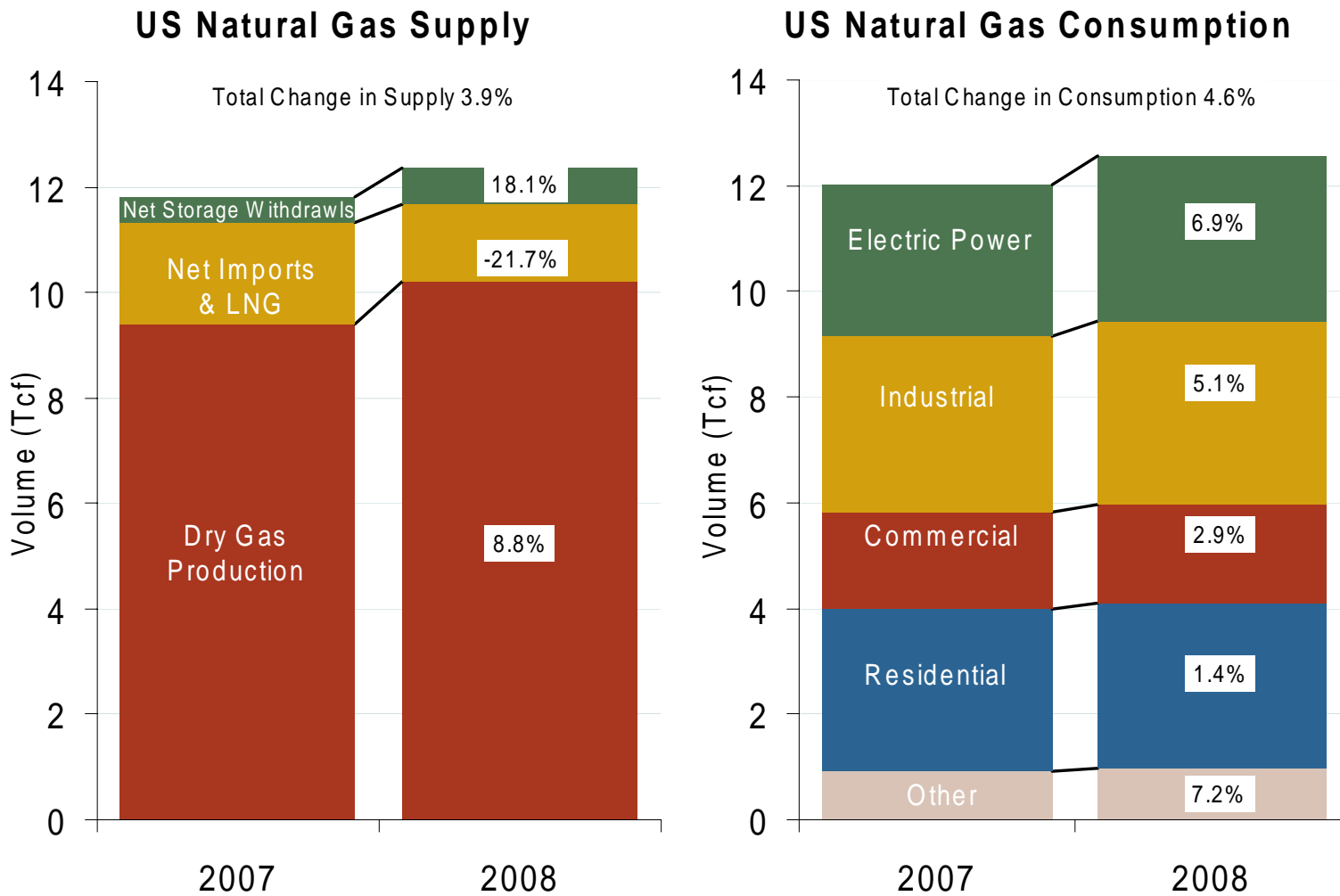
Updated September 5, 2008

Oil, Natural Gas and Currency Spot Prices



Source: Derived from *Bloomberg* data.
September 2008 Northeast Snapshot Report

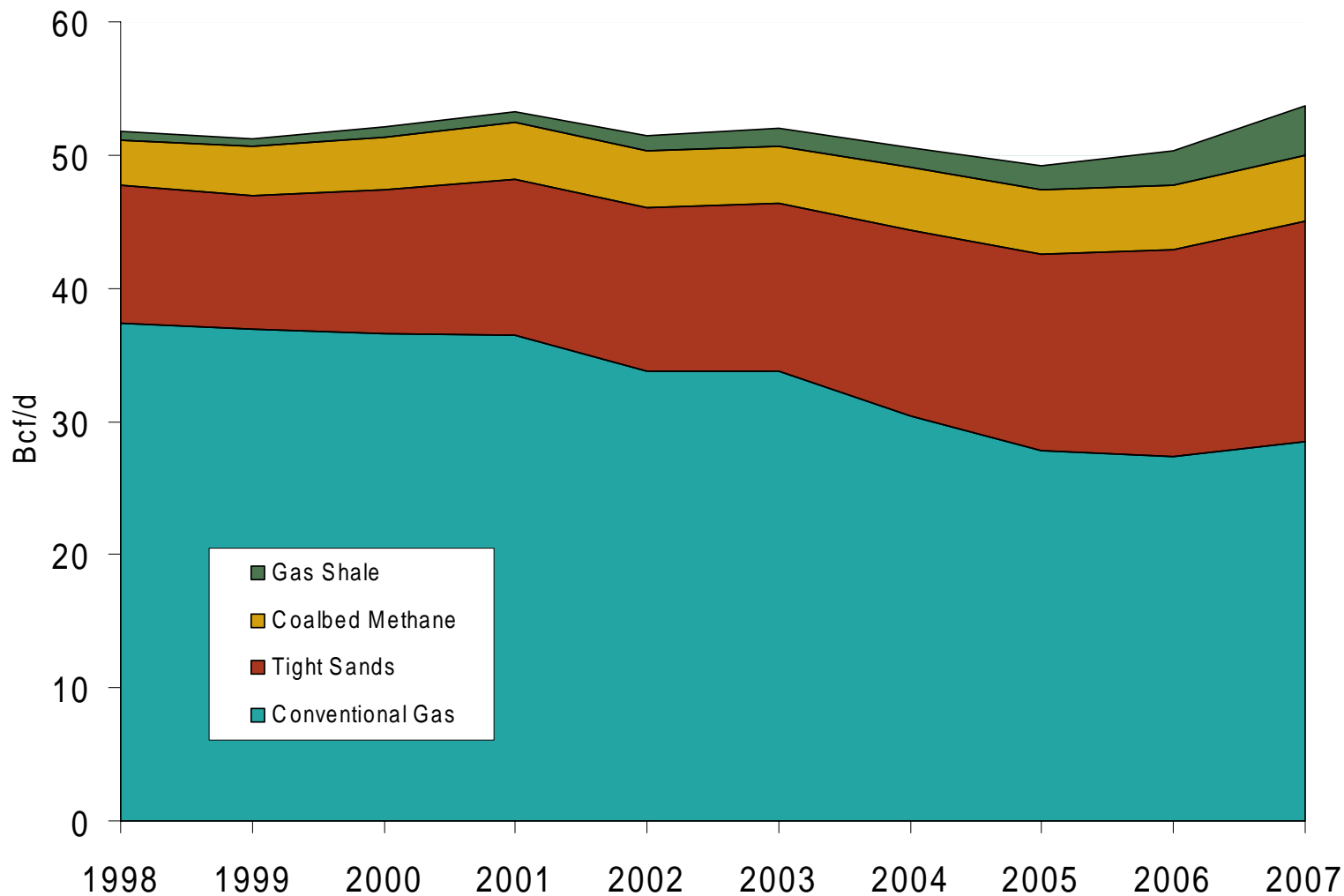
U.S. Natural Gas Supply and Consumption Jan-Jun



Major US Shale Basins

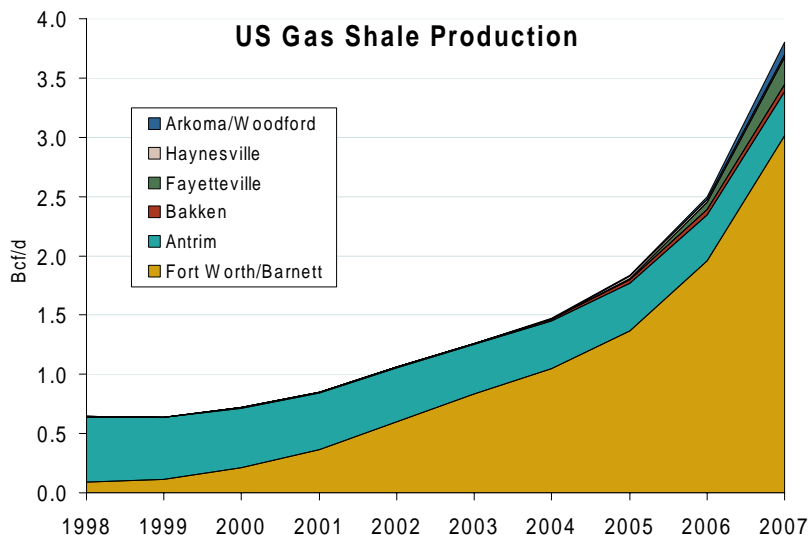
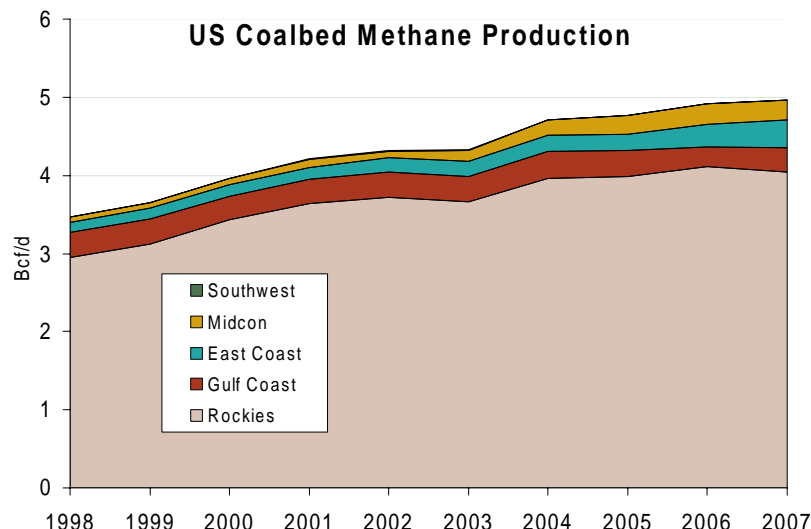
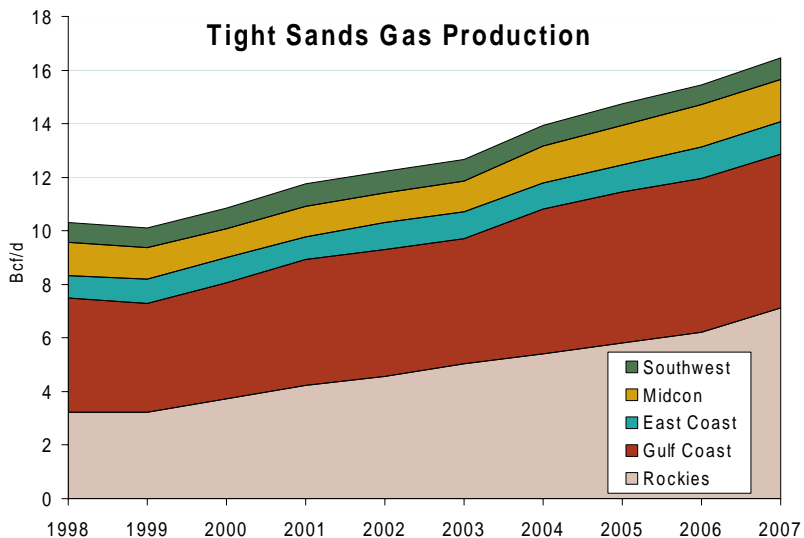


US Natural Gas Production



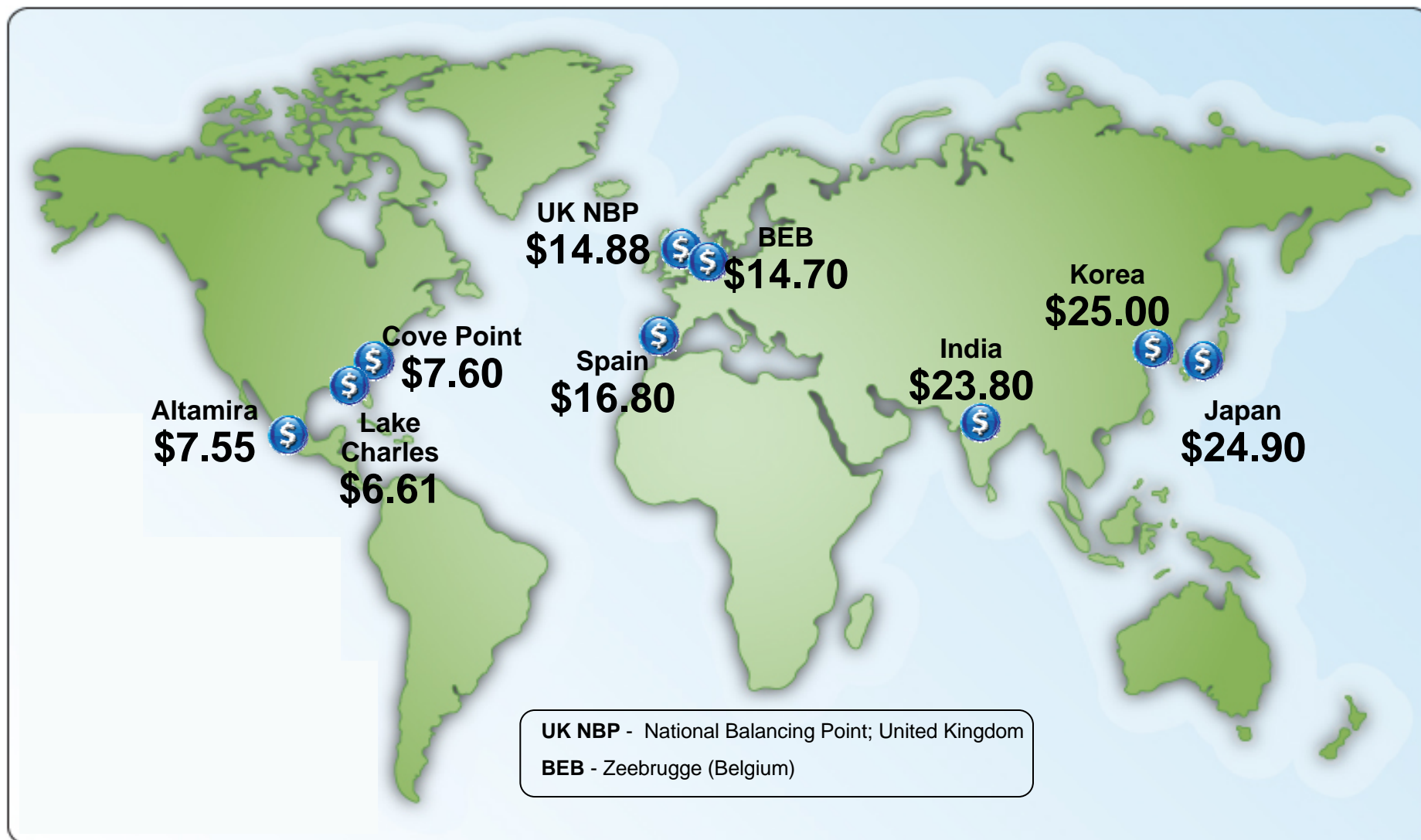
Source: Derived from EIA data.
September 2008 Northeast Snapshot Report

“Unconventional” Natural Gas Production



Source: Derived from EIA data.
September 2008 Northeast Snapshot Report

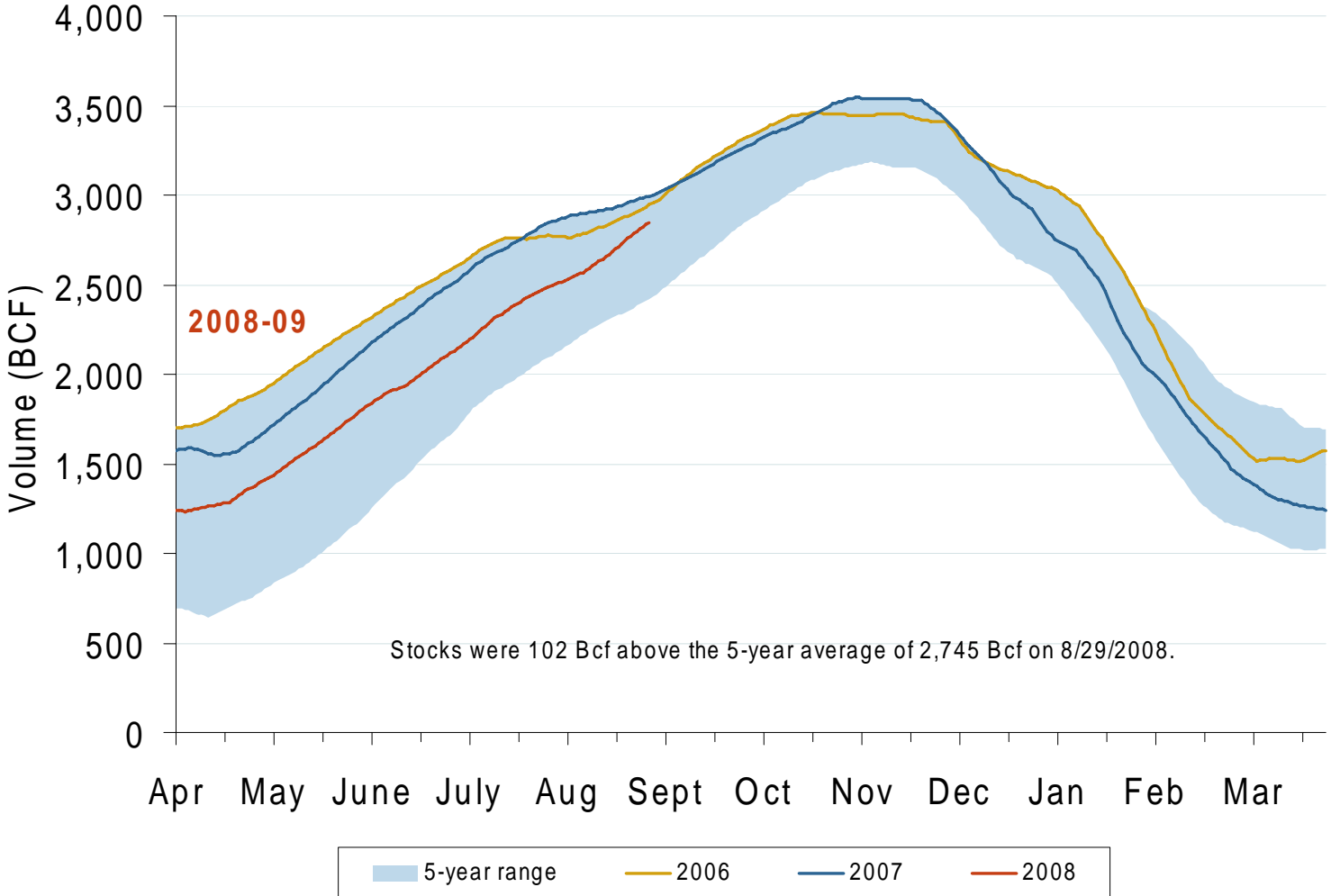
World LNG Landed Price Estimates for October 2008



Source: *Waterborne Energy, Inc.* data in \$US/MMBtu.

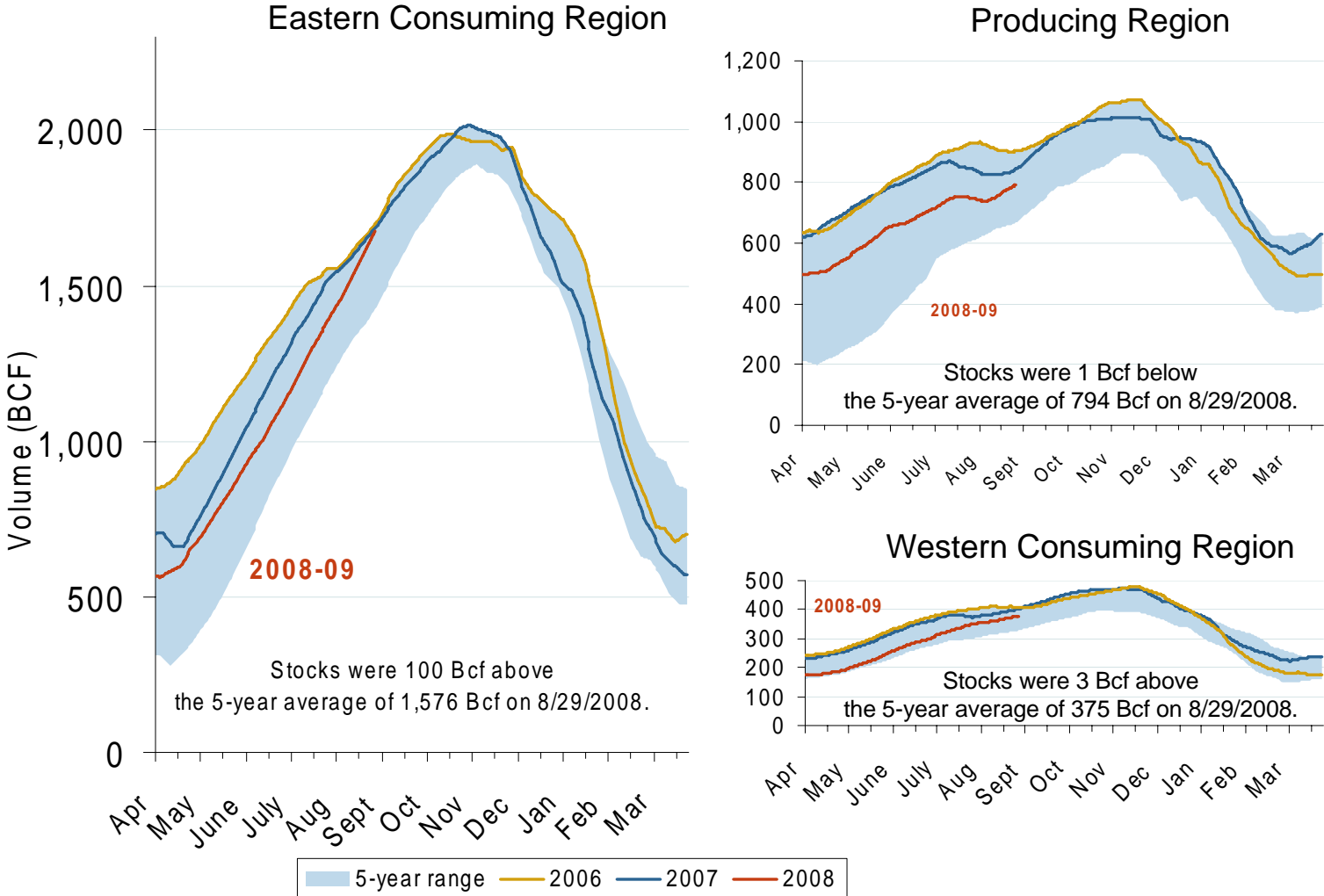
Updated September 5, 2008

Total U.S. Working Gas in Storage



Source: Derived from EIA data.
September 2008 Northeast Snapshot Report

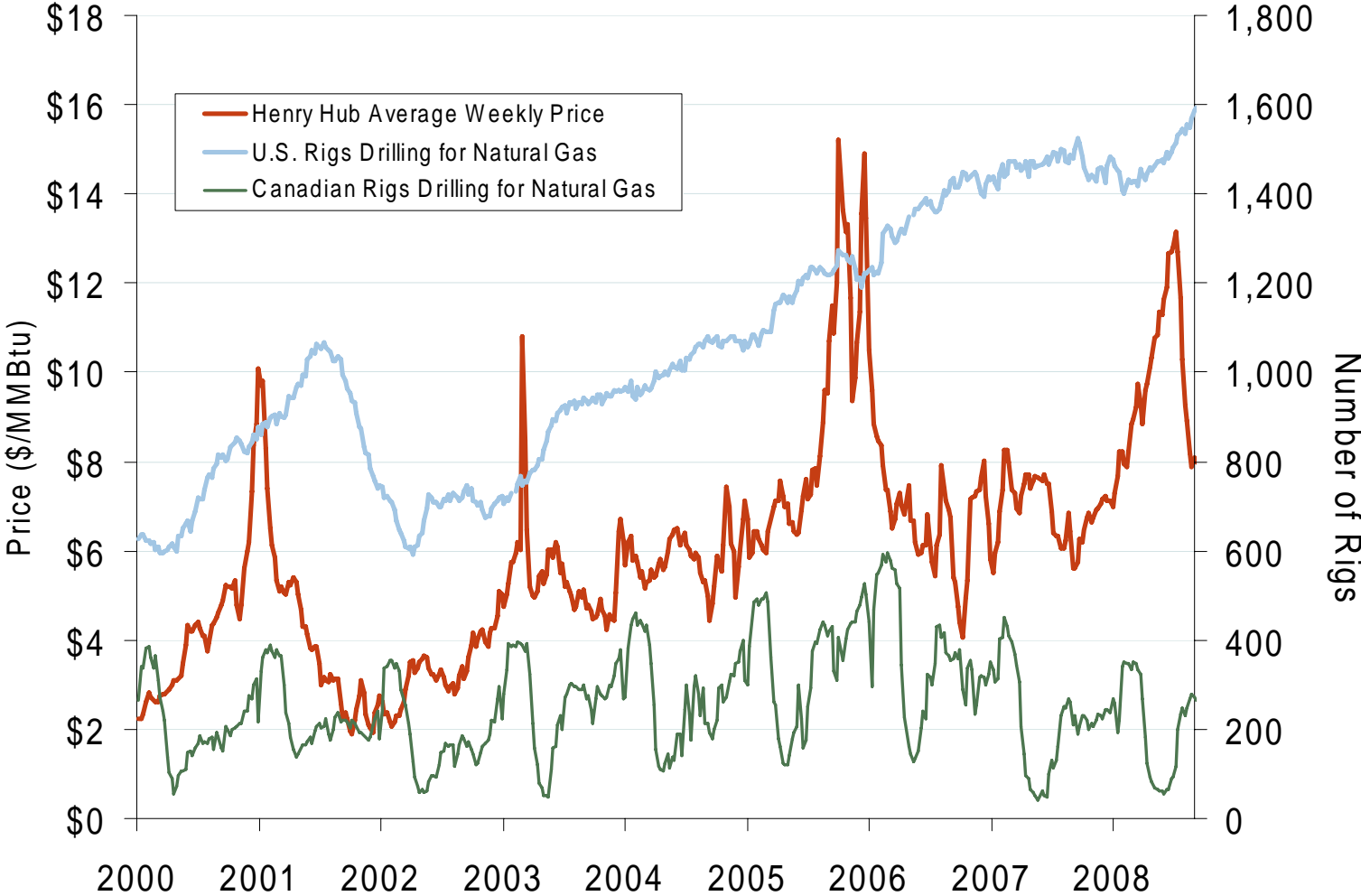
Regional Totals of Working Gas in Storage



Source: Derived from EIA data. September 2008 Northeast Snapshot Report

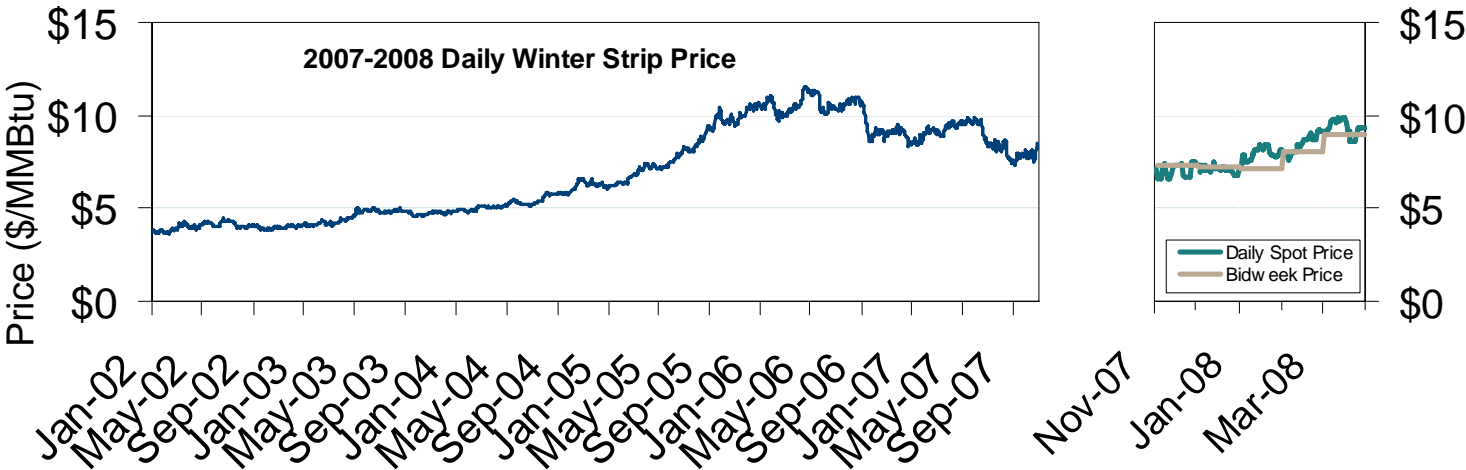
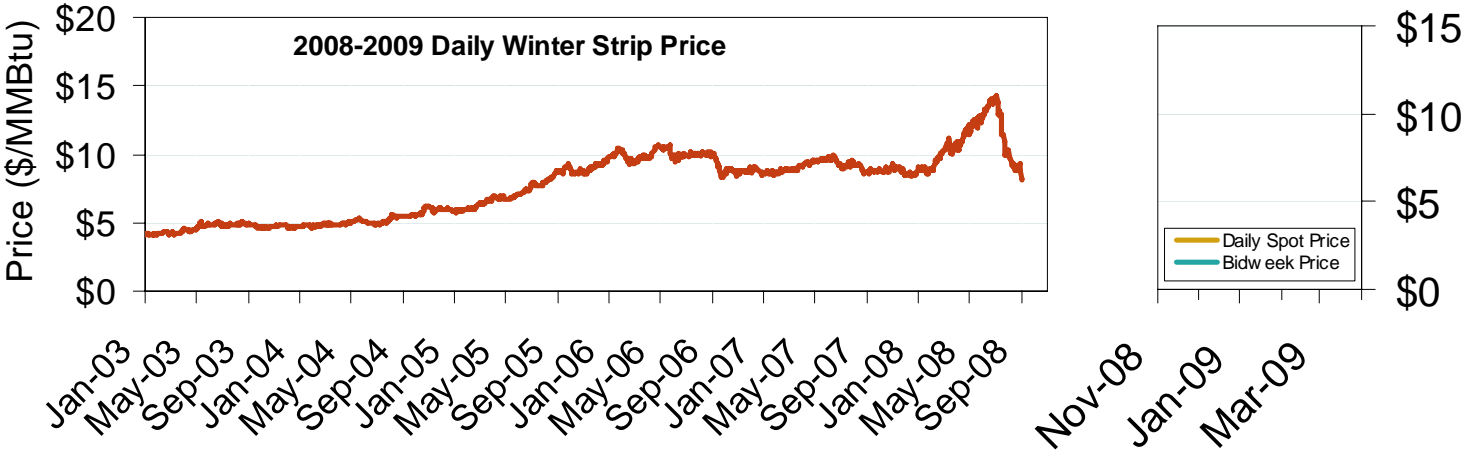
Updated September 5, 2008

U.S. and Canadian Natural Gas Drilling Rig Count and Daily Spot Prices



Source: Derived from *Platts* and *Baker Hughes* data.
September 2008 Northeast Snapshot Report

Natural Gas Winter Futures Strip and Daily Henry Hub Spot and Bidweek Prices

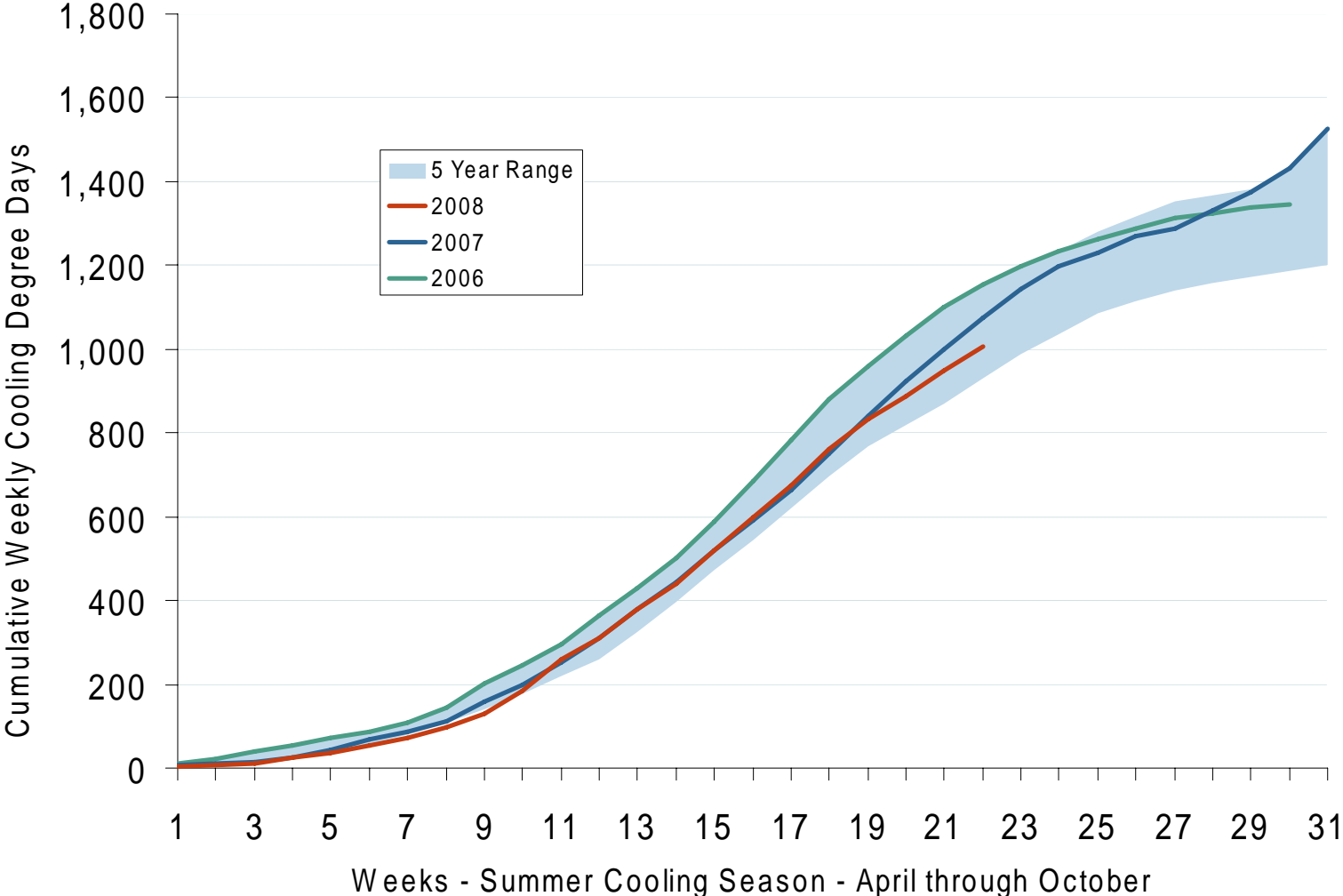


Source: Derived from *Platts* and *Nymex* data.
September 2008 Northeast Snapshot Report



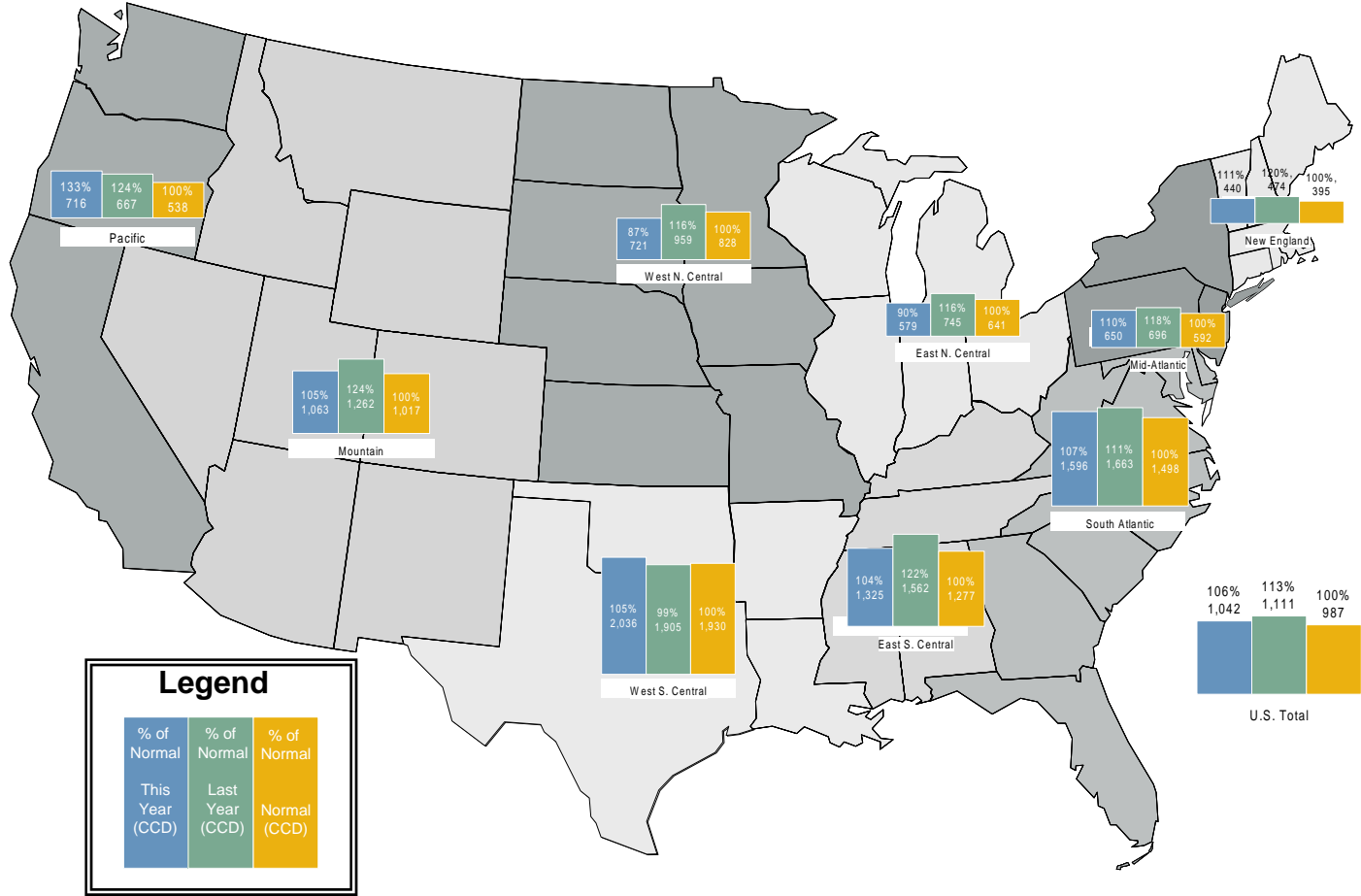
Market Fundamentals

U. S. Summer Cumulative Cooling Degree Days



Source: Derived from NOAA data.

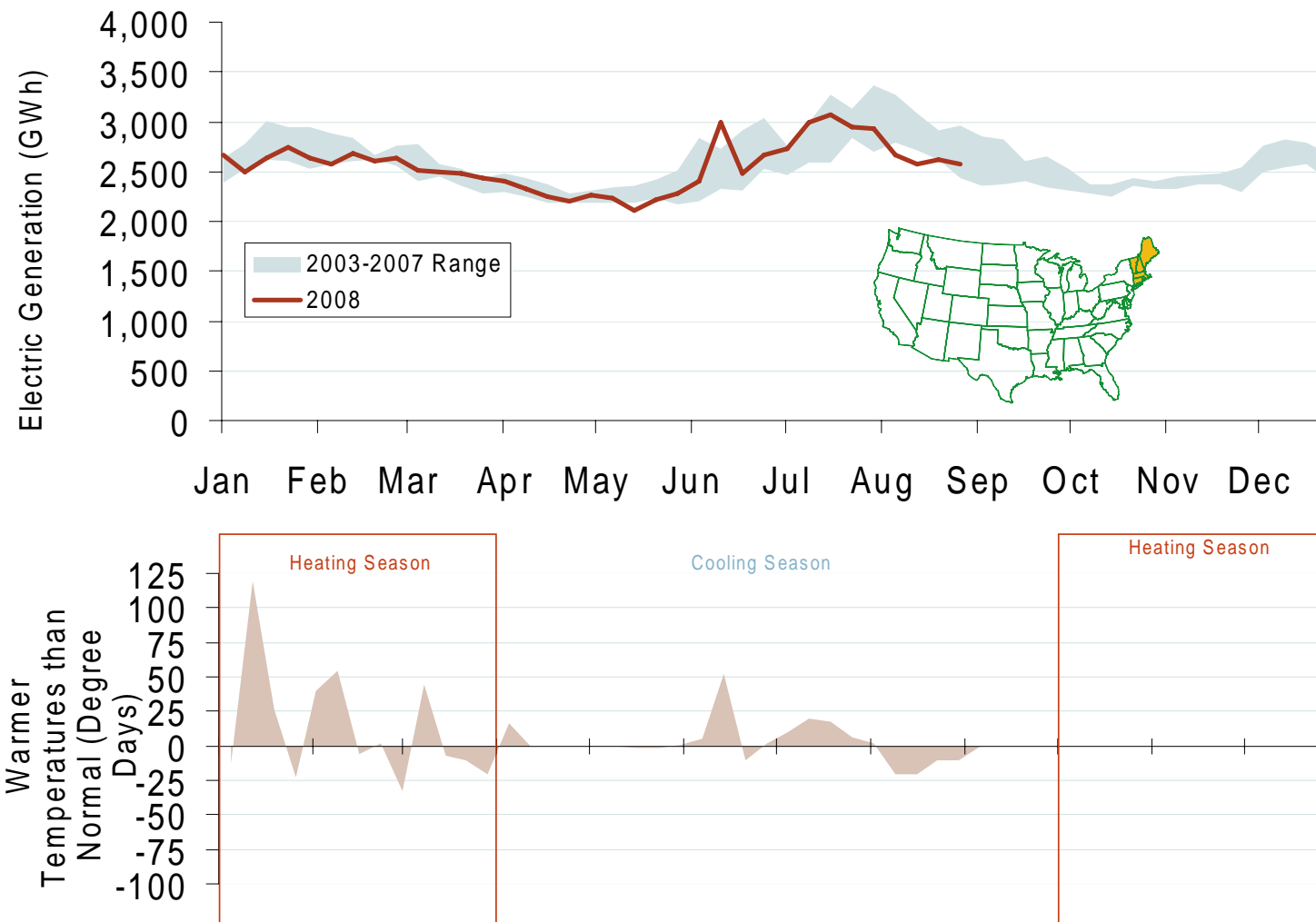
Regional Cooling Degree Days 2008 Through August



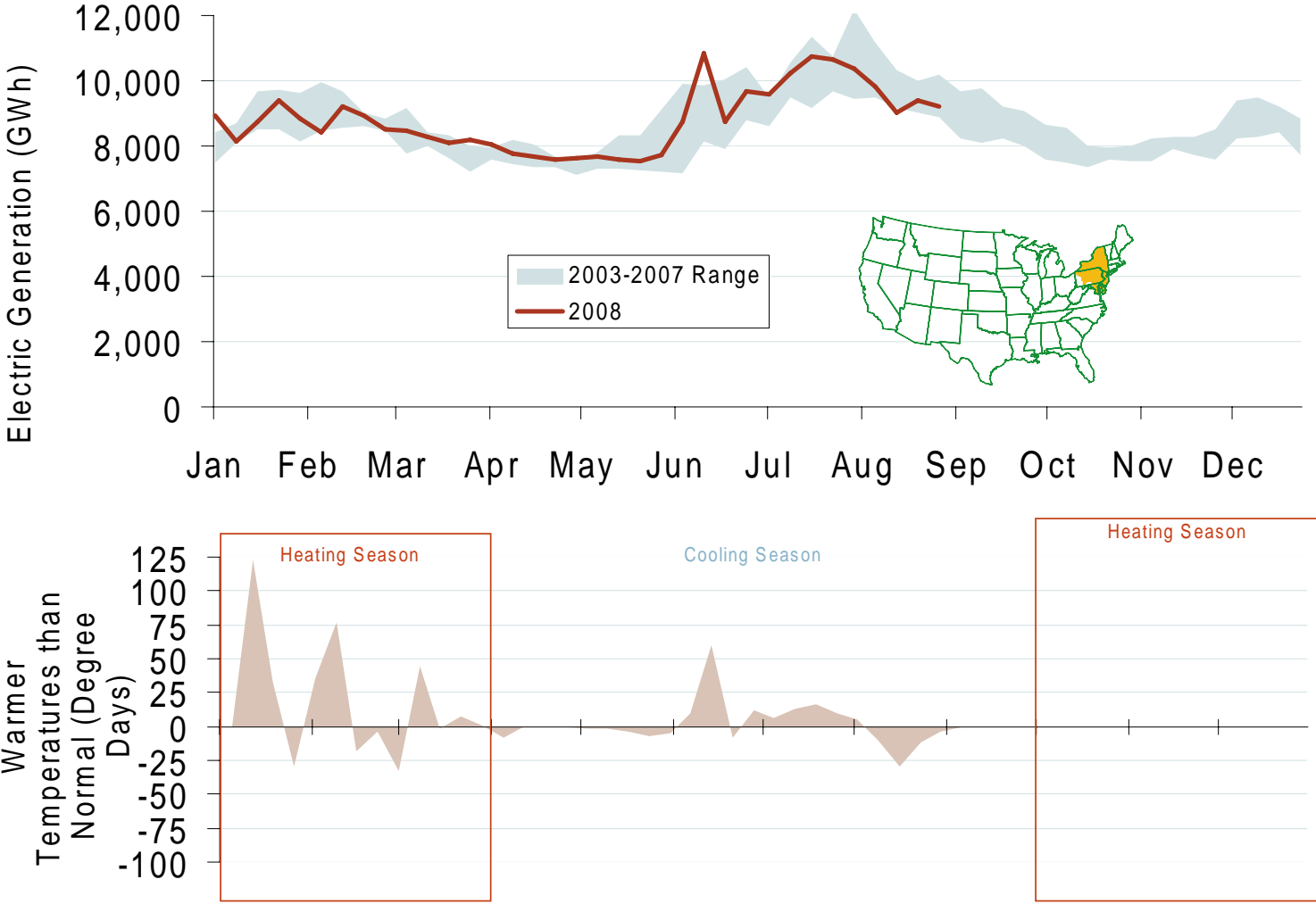
Source: Derived from NOAA data. Normal is based on a 30-year average of cooling degree days. September 2008 Northeast Snapshot Report

Updated September 5, 2008

Weekly Electric Generation Output and Temperatures New England



Weekly Electric Generation Output and Temperatures Mid Atlantic Region



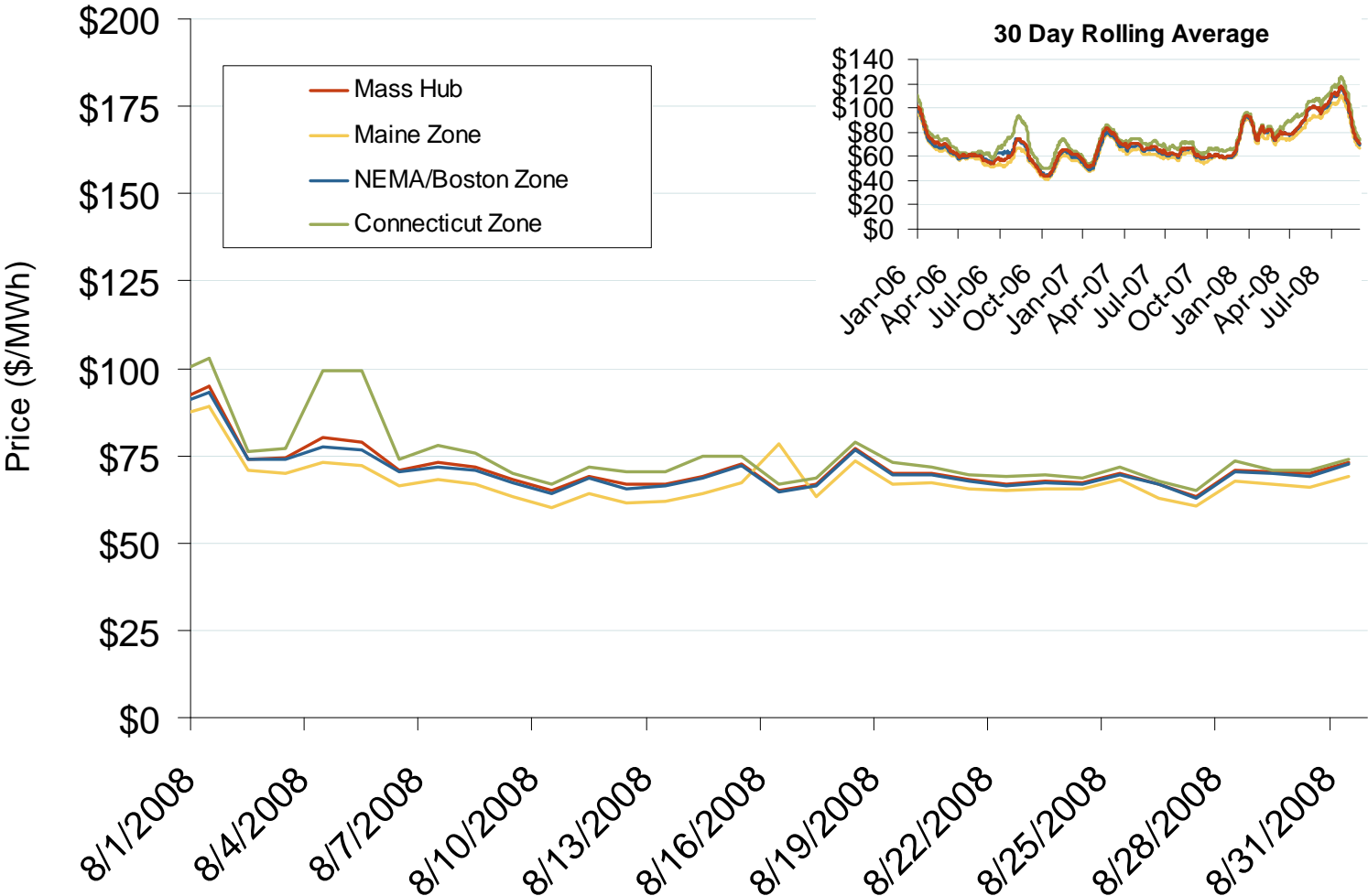
Source: Derived from *EI* and *NOAA* data.
September 2008 Northeast Snapshot Report



Prices and Market Analysis

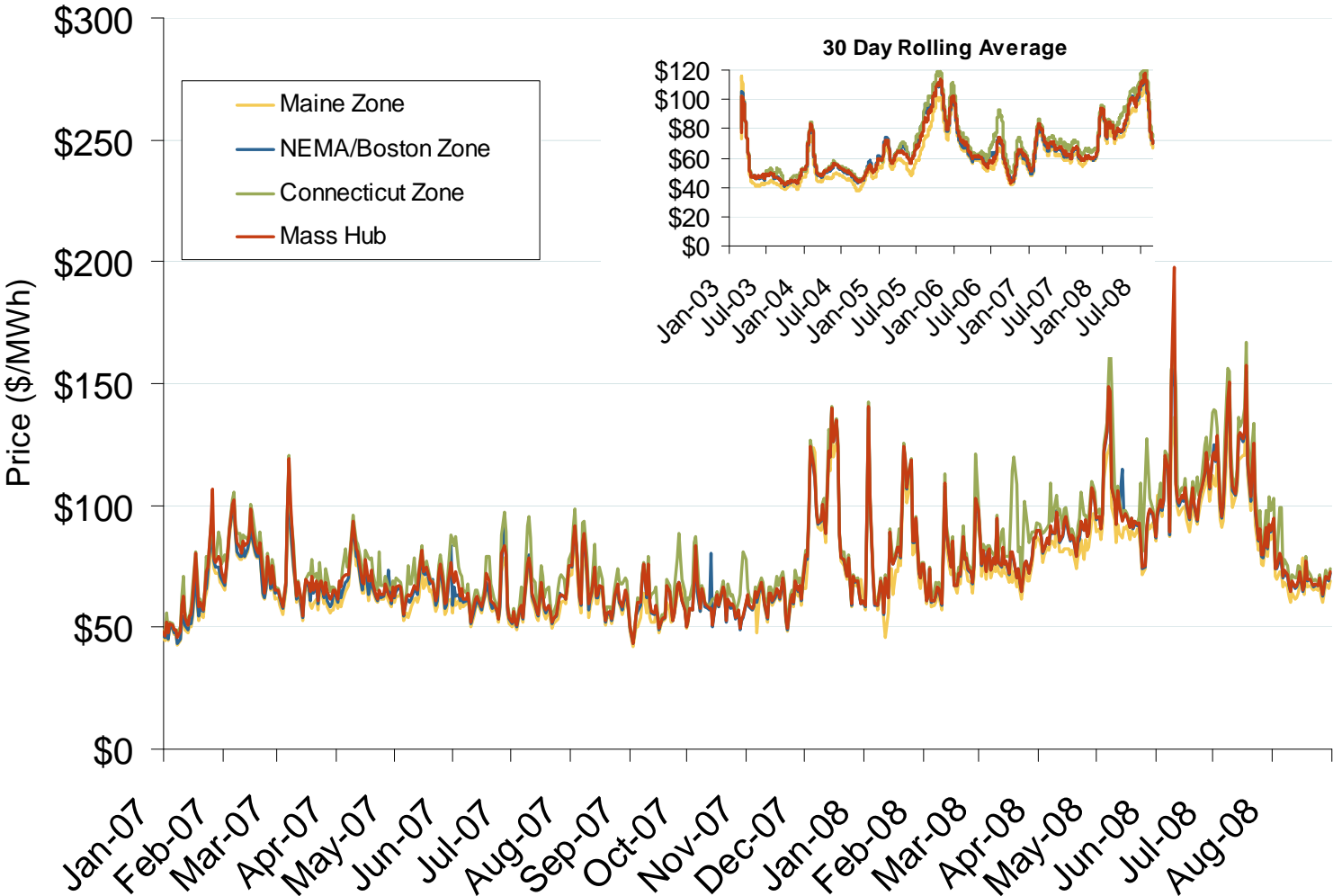
- **Electric**
- **Natural Gas**
- **Other Markets**

Daily Average of ISO-NE Day-Ahead Prices - All Hours



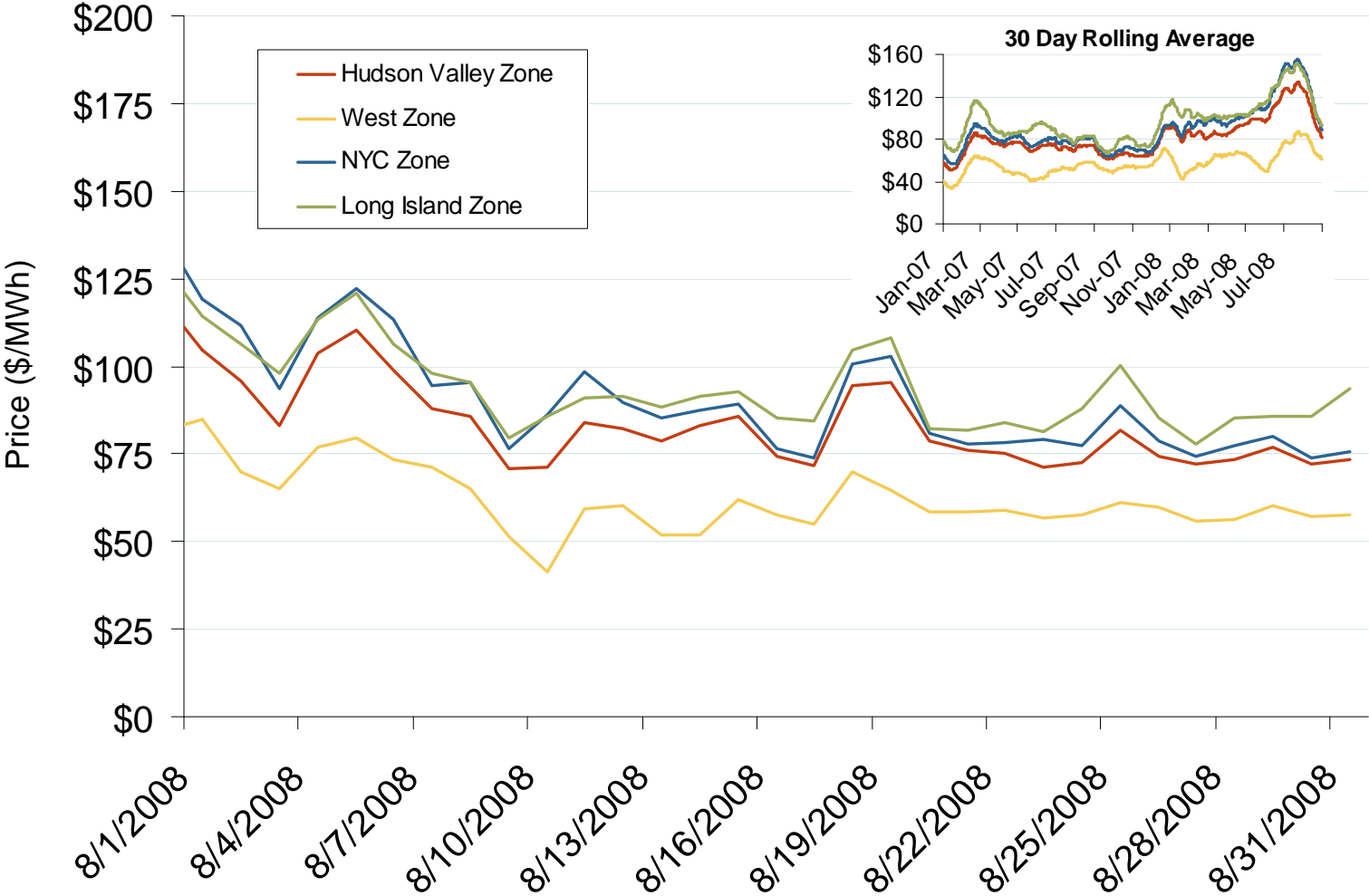
Source: Derived by Bloomberg from ISO-NE data as reported by Bloomberg. September 2008 Northeast Snapshot Report

Daily Average of ISO-NE Day-Ahead Prices - All Hours



Source: Derived by Bloomberg from ISO-NE data as reported by Bloomberg.
September 2008 Northeast Snapshot Report

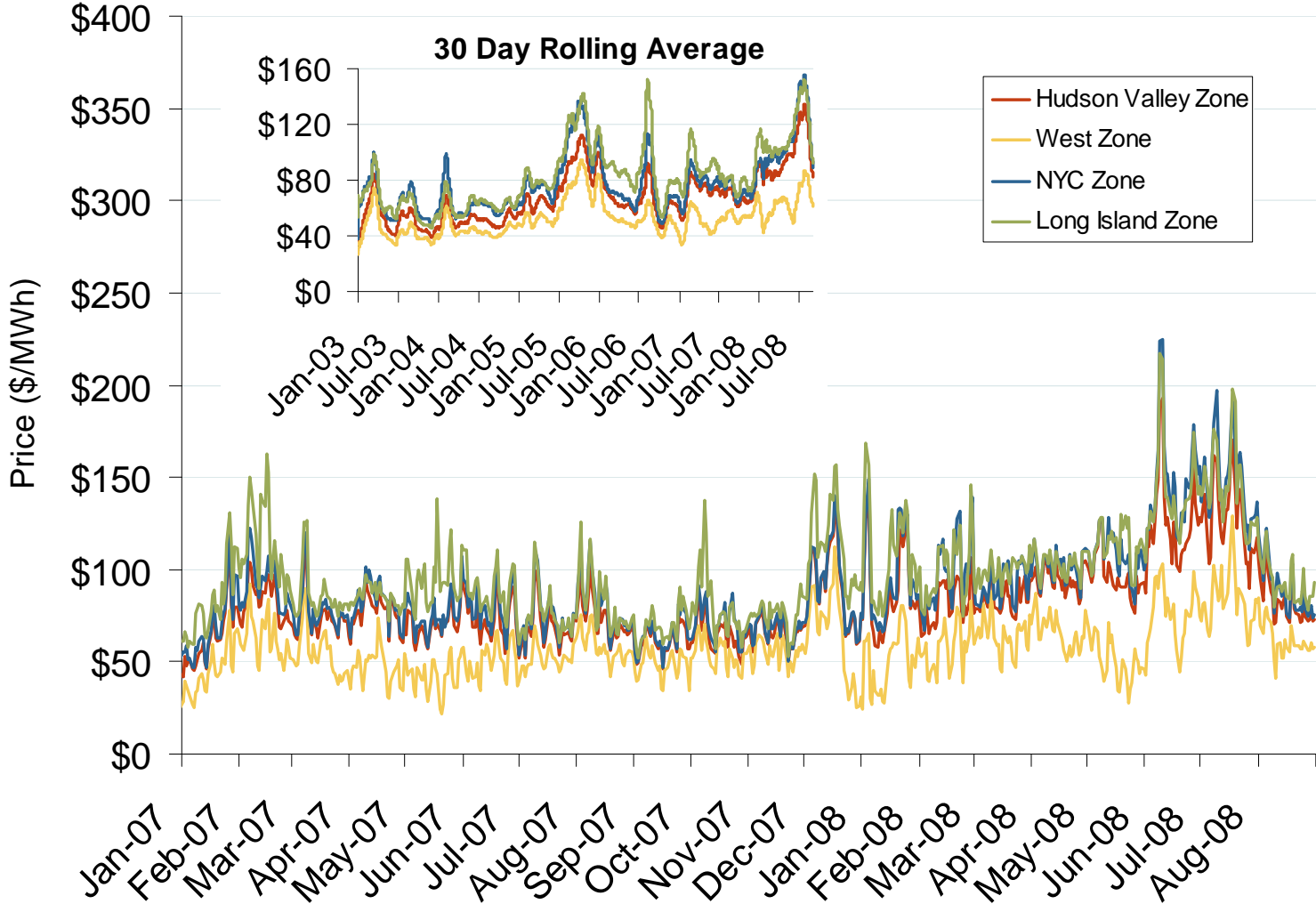
Daily Average of NYISO Day-Ahead Prices - All Hours



Source: Derived by Bloomberg from NYISO data as reported by Bloomberg. September 2008 Northeast Snapshot Report

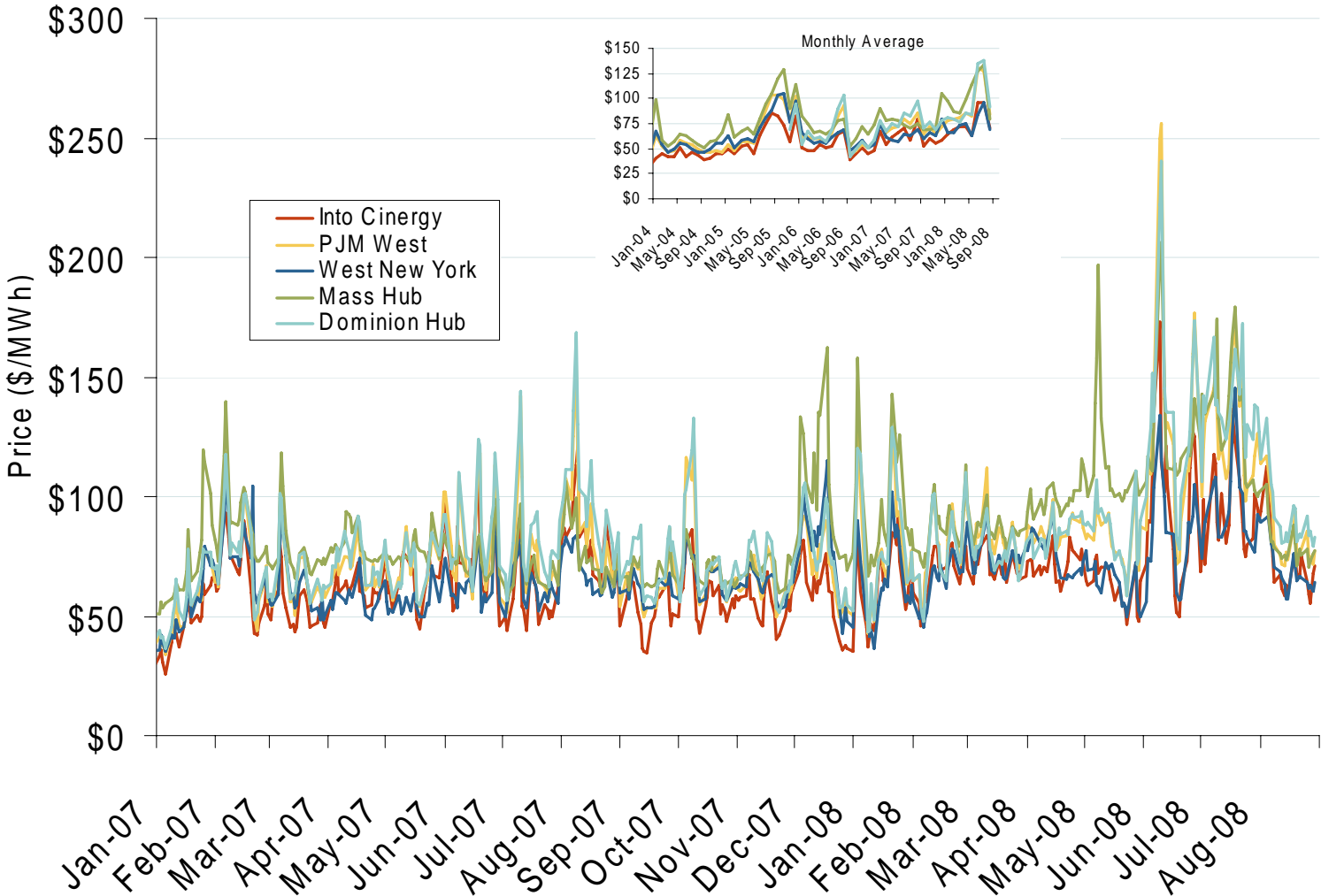
Updated September 11, 2008

Daily Average of NYISO Day-Ahead Prices - All Hours



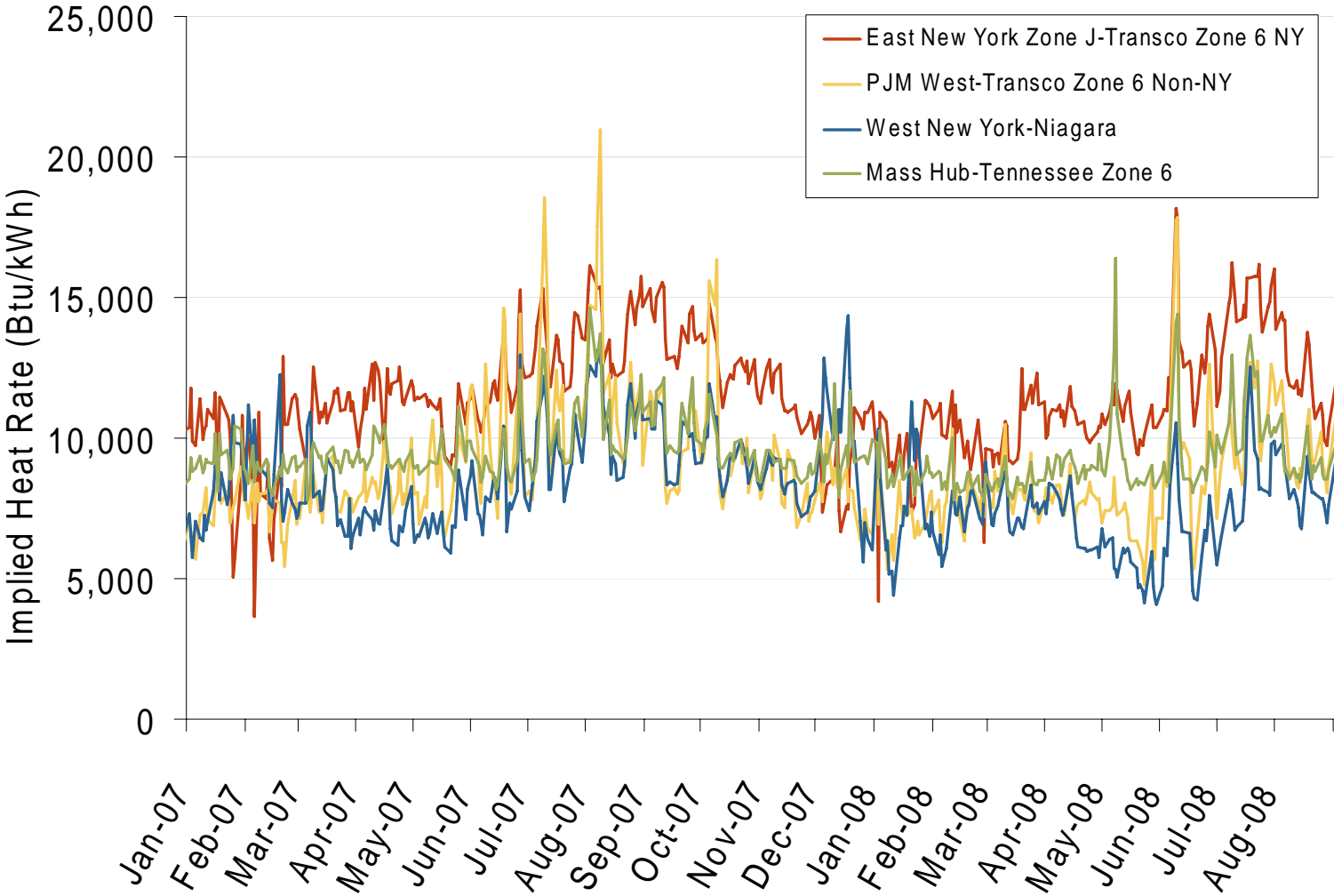
Source: Derived by Bloomberg from NYISO data as reported by Bloomberg. September 2008 Northeast Snapshot Report

Eastern Daily Bilateral Day-Ahead On-Peak Prices



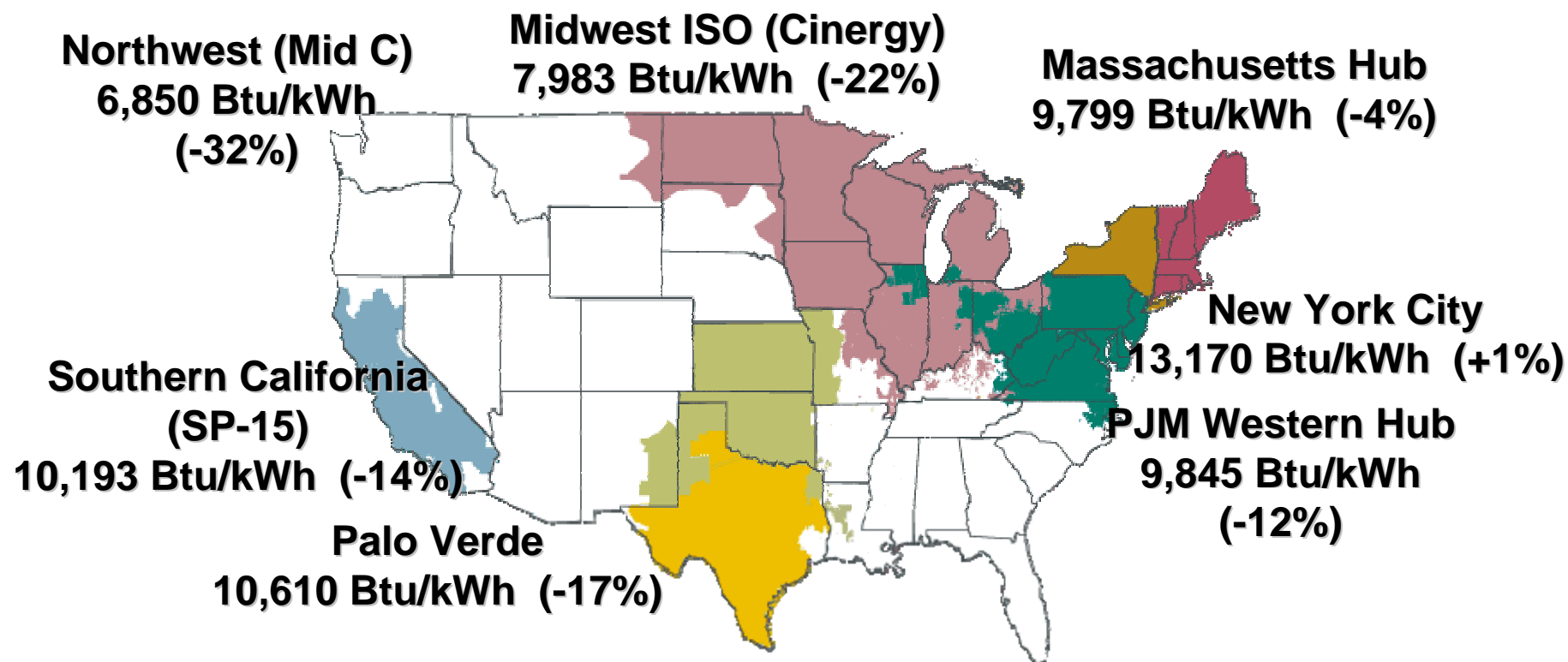
Source: Derived from *Platts* data.
September 2008 Northeast Snapshot Report

Implied Heat Rates at Eastern Trading Points

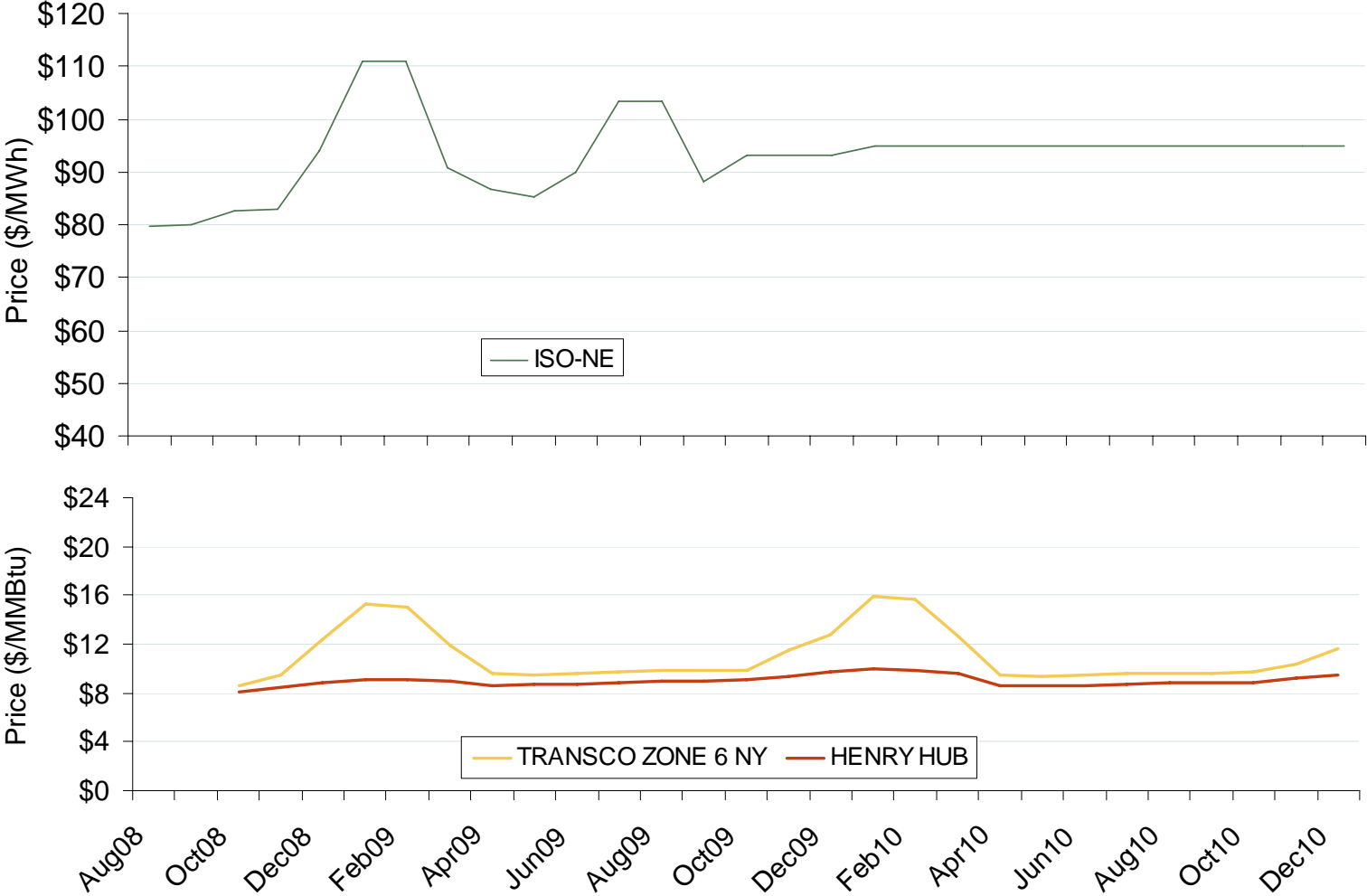


Source: Derived from Platts data
September 2008 Northeast Snapshot Report

June-August Implied Heat Rates, 2008 vs. 2007



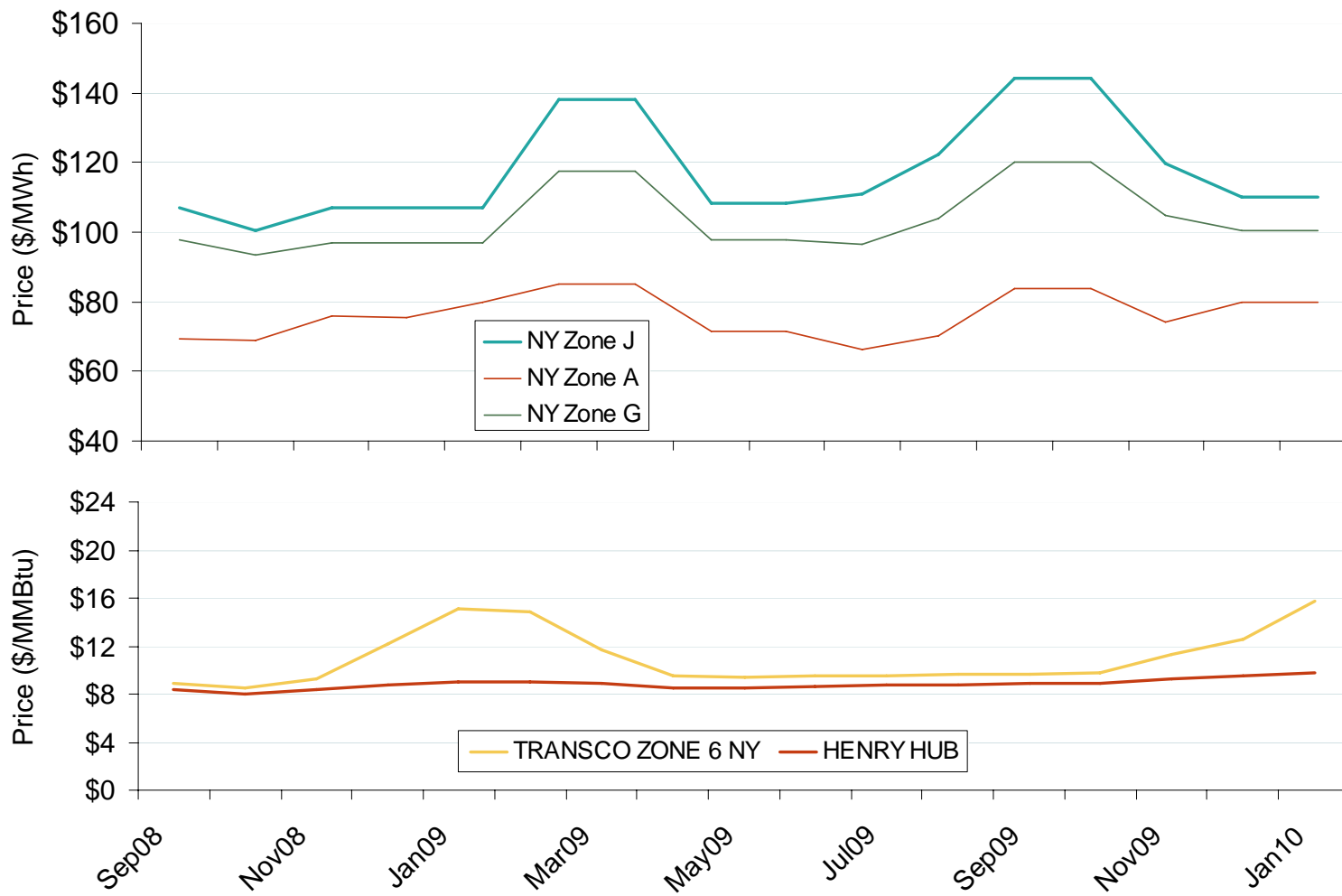
New England Electric Forward Price Curve and New York and Henry Hub Natural Gas Forward Curves



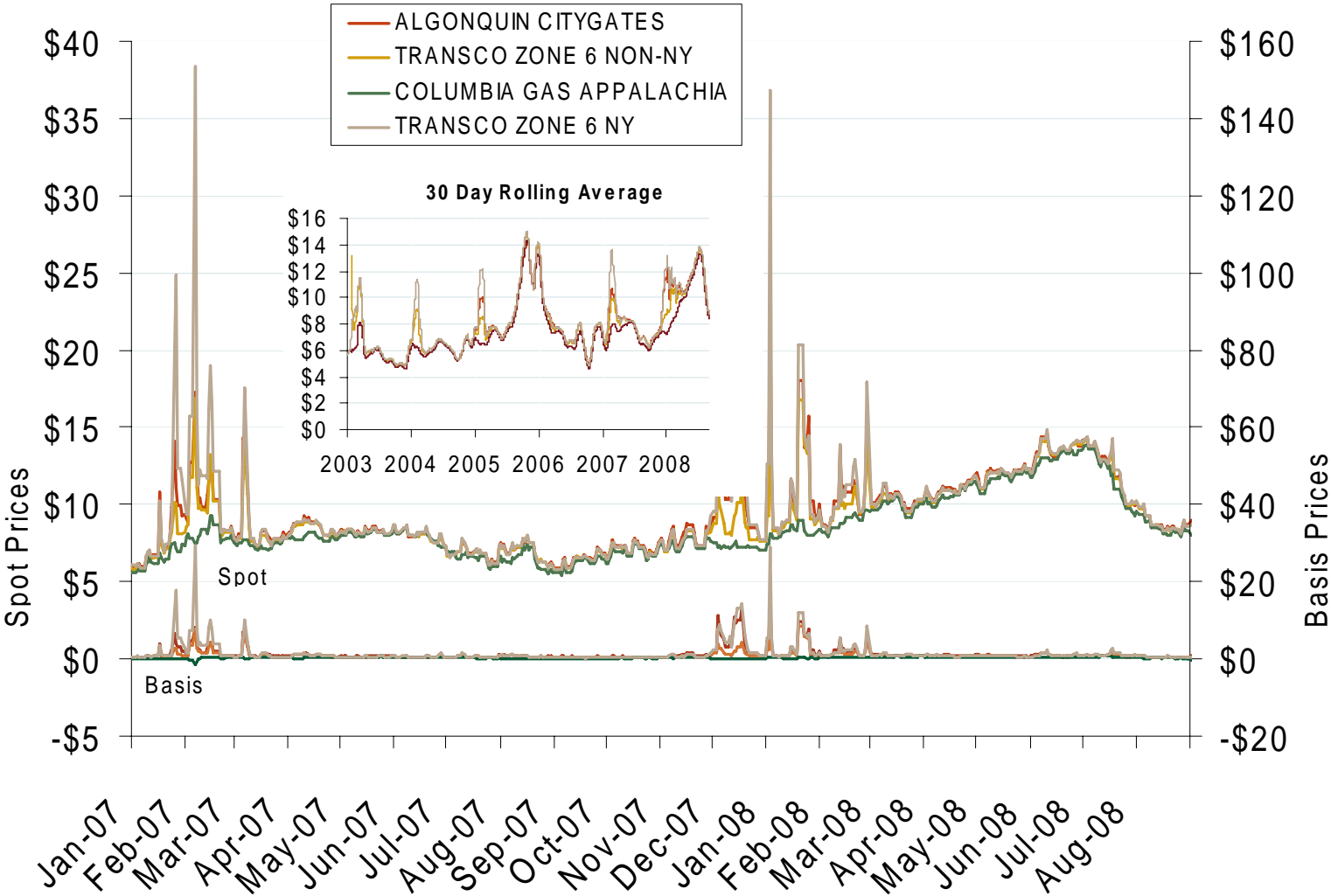
Source: Derived from Nymex data.
September 2008 Northeast Snapshot Report

Updated September 5, 2008

New York Electric Forward Price Curves and New York and Henry Hub Natural Gas Forward Curves



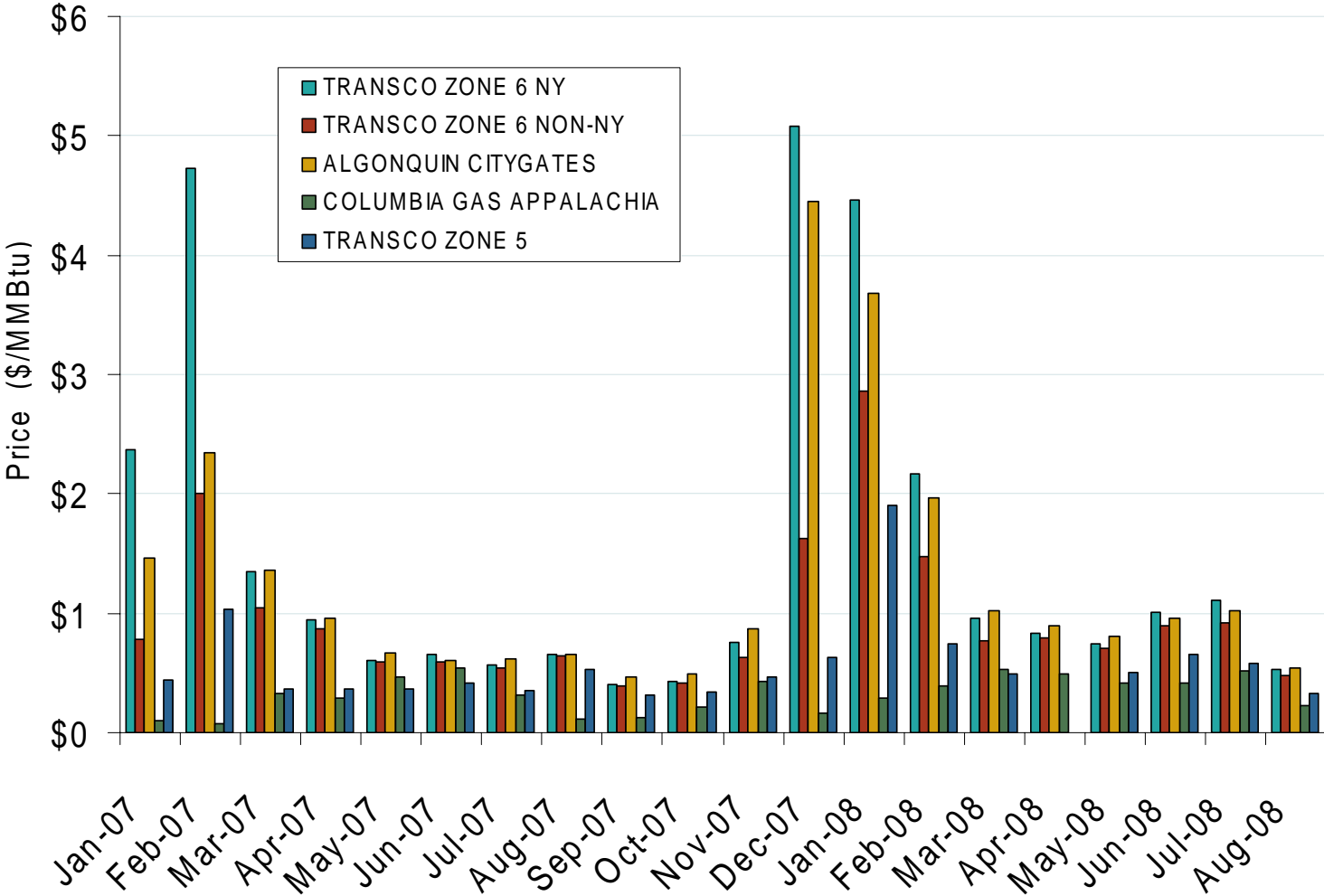
Northeastern Spot Prices and Basis



Source: Derived from *Platts* data.
September 2008 Northeast Snapshot Report

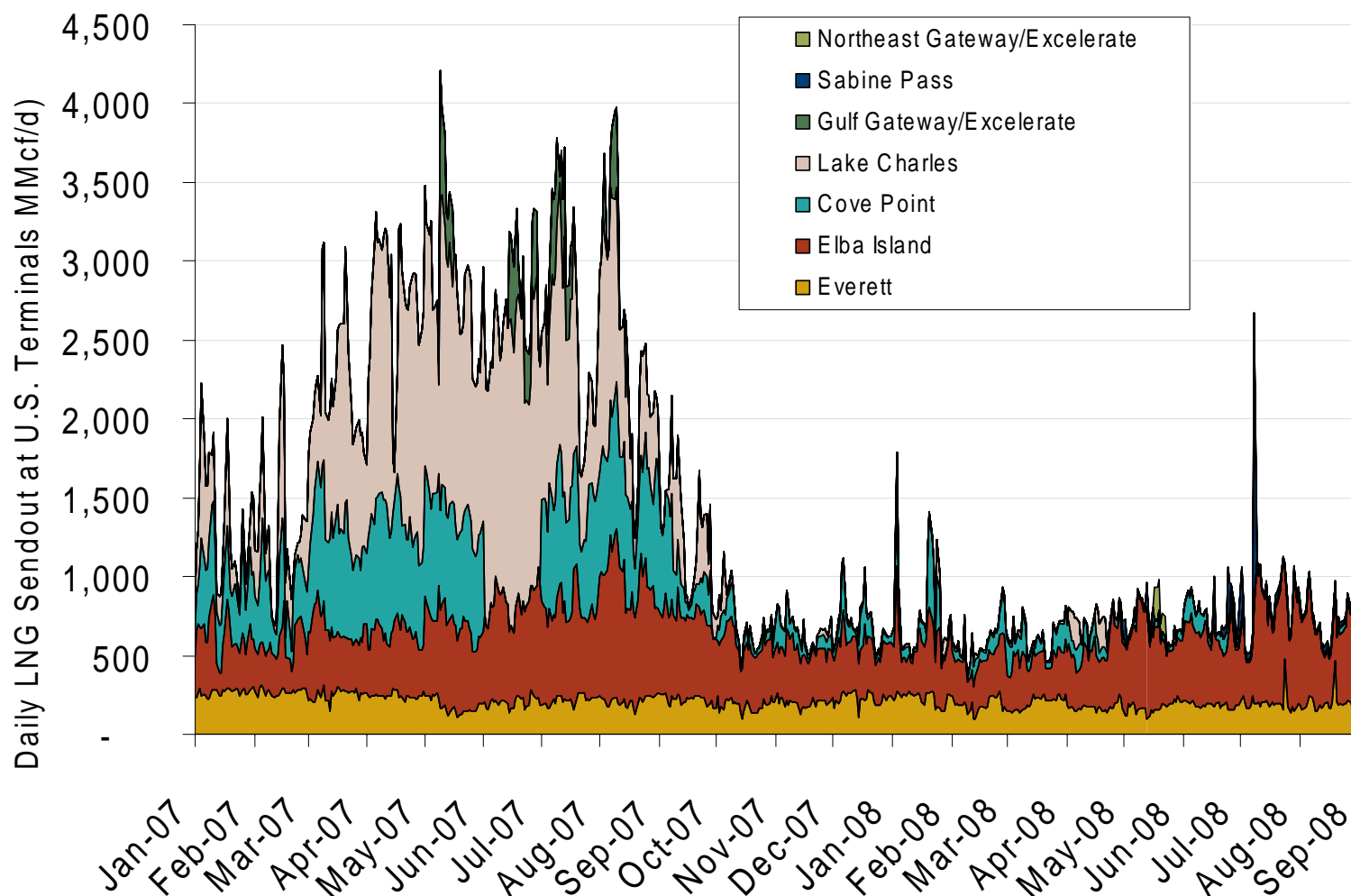
Updated September 5, 2008₂₀₃₀

Northeastern Monthly Average Basis Value to Henry Hub



Source: Derived from Platts data. September 2008 Northeast Snapshot Report

Daily Gas Sendout from Existing U.S. LNG Facilities



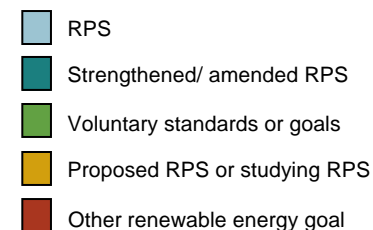
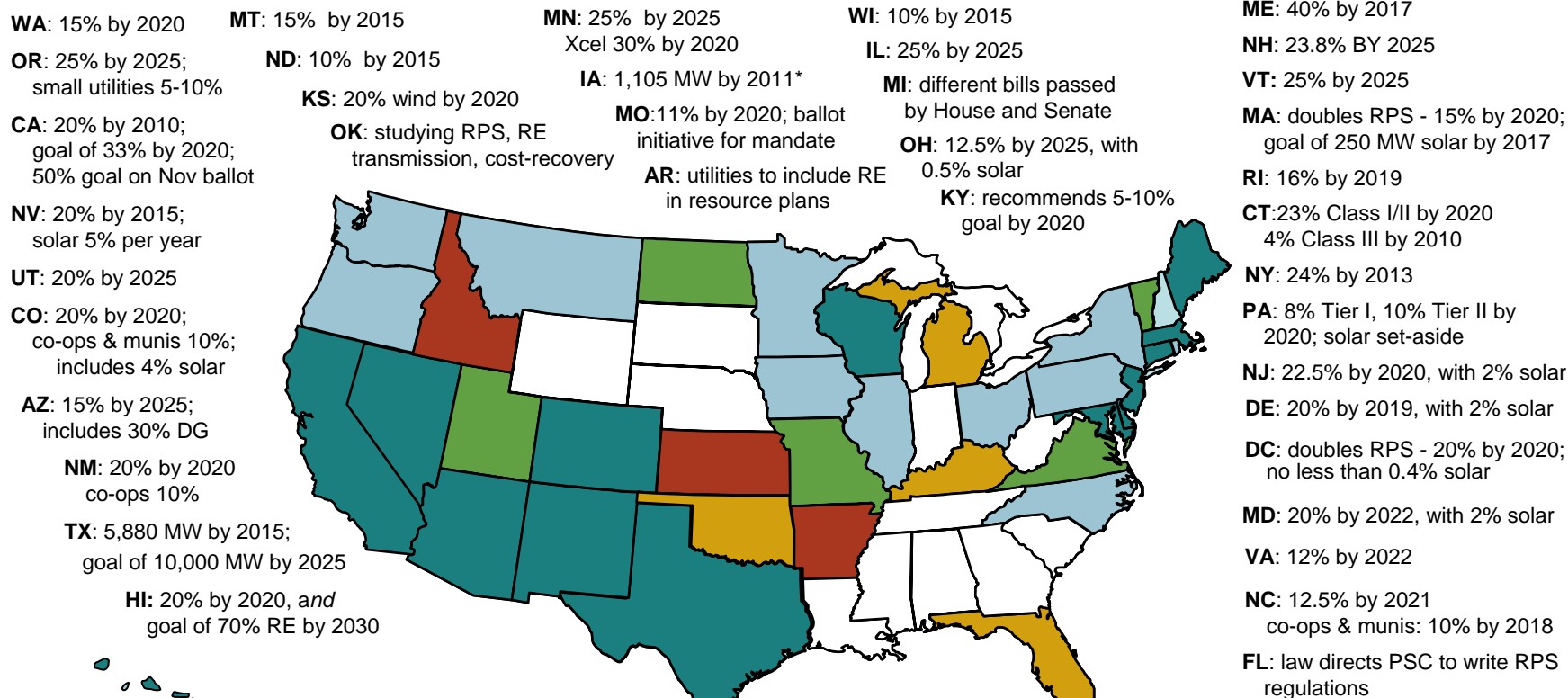
Source: Derived from *Bentek* data. Excludes Everett LNG delivered via truck and consumed by the Mystic plant as well as Freeport LNG which flows via intrastate pipelines.

September 2008 Northeast Snapshot Report

Updated September 5, 2008

3007

Renewable Energy Portfolio Standards (RPS)



Updates at: <http://www.ferc.gov/market-oversight/mkt-electric/overview/elec-ovr-rps.pdf>

Notes: Alaska has no RPS; DG is distributed generation; * Iowa has a goal of 1,000 MW of wind by 2010
Sources: Derived from data in: EEI, EIA, LBNL, PUCs, State legislative tracking services, Database of State Incentives for Renewables and Efficiency, and the Union of Concerned Scientists.

Energy Efficiency Resource Standards (EERS)

