

Table IV-1
 FEMALE BREAST CANCER (Invasive)

TRENDS IN SEER INCIDENCE^a AND U.S. MORTALITY^b USING THE JOINPOINT REGRESSION PROGRAM, 1975-2003
 WITH UP TO THREE JOINPOINTS BY RACE AND AGE

		<u>Joinpoint Segment 1</u>		<u>Joinpoint Segment 2</u>		<u>Joinpoint Segment 3</u>		<u>Joinpoint Segment 4</u>	
		Year	APC	Year	APC	Year	APC	Year	APC
<u>SEER Cancer Incidence^a</u>									
All Races	All Ages	1975-1980	-0.4	1980-1987	3.7*	1987-2001	0.4*	2001-2003	-4.8
All Races	Under 50	1975-1980	-1.4	1980-1986	3.0*	1986-2003	-0.3*		
All Races	50 and Over	1975-1982	0.8	1982-1986	5.8*	1986-2001	0.7*	2001-2003	-6.1
White	All Ages	1975-1980	-0.3	1980-1987	3.7*	1987-2001	0.5*	2001-2003	-5.1
White	Under 50	1975-1980	-1.2	1980-1986	2.8*	1986-2003	-0.3*		
White	50 and Over	1975-1980	0.0	1980-1987	4.2*	1987-2001	0.7*	2001-2003	-6.3*
Black	All Ages	1975-1992	2.2*	1992-2003	-0.3				
Black	Under 50	1975-1991	1.6*	1991-2003	-1.2*				
Black	50 and Over	1975-1993	2.5*	1993-2003	-0.1				
<u>SEER Delay-Adjusted Incidence^a</u>									
All Races	All Ages	1975-1980	-0.4	1980-1987	3.7*	1987-2001	0.5*	2001-2003	-4.1
All Races	Under 50	1975-1980	-1.4	1980-1986	2.9*	1986-2003	-0.2		
All Races	50 and Over	1975-1982	0.8	1982-1986	5.8*	1986-2001	0.8*	2001-2003	-5.3
White	All Ages	1975-1980	-0.3	1980-1987	3.7*	1987-2001	0.6*	2001-2003	-4.3
White	Under 50	1975-1980	-1.2	1980-1986	2.8*	1986-2003	-0.2		
White	50 and Over	1975-1980	0.0	1980-1987	4.2*	1987-2001	0.8*	2001-2003	-5.5
Black	All Ages	1975-1992	2.3*	1992-2003	0.0				
Black	Under 50	1975-1991	1.6*	1991-2003	-1.0*				
Black	50 and Over	1975-1992	2.6*	1992-2003	0.4				
<u>U.S. Cancer Mortality^b</u>									
All Races	All Ages	1975-1990	0.4*	1990-1995	-1.8*	1995-1999	-3.1*	1999-2003	-1.4*
All Races	Under 50	1975-1990	-0.4*	1990-2003	-3.3*				
All Races	50 and Over	1975-1990	0.6*	1990-2003	-2.0*				
White	All Ages	1975-1990	0.3*	1990-1995	-2.0*	1995-1998	-3.6*	1998-2003	-1.7*
White	Under 50	1975-1990	-0.6*	1990-2003	-3.7*				
White	50 and Over	1975-1990	0.5*	1990-2003	-2.1*				
Black	All Ages	1975-1991	1.6*	1991-2003	-1.1*				
Black	Under 50	1975-1988	1.7*	1988-2003	-1.9*				
Black	50 and Over	1975-1993	1.6*	1993-2003	-1.1*				

Joinpoint Regression Program Version 3.1, April 2006, National Cancer Institute. (<http://srab.cancer.gov/joinpoint/>).

The APC is the Annual Percent Change based on rates age-adjusted to the 2000 US Std Population (19 age groups - Census P25-1130).

^a Trends are from the SEER 9 areas (San Francisco, Connecticut, Detroit, Hawaii, Iowa, New Mexico, Seattle, Utah, and Atlanta).

^b Trends are from the NCHS public use data file for the total US.

* The APC is significantly different from zero (p<.05).

Table IV-2
 FEMALE BREAST CANCER (*In Situ*)

TRENDS IN SEER INCIDENCE^a USING THE JOINPOINT REGRESSION PROGRAM, 1975-2003
 WITH UP TO THREE JOINPOINTS BY RACE AND AGE

		<u>Joinpoint Segment 1</u>		<u>Joinpoint Segment 2</u>		<u>Joinpoint Segment 3</u>		<u>Joinpoint Segment 4</u>	
		Year	APC	Year	APC	Year	APC	Year	APC
<u>SEER Cancer Incidence^a</u>									
All Races	All Ages	1975-1982	-0.8	1982-1986	32.2*	1986-2000	6.2*	2000-2003	-1.4
All Races	Under 50	1975-1982	-2.5	1982-1986	29.3*	1986-2003	3.3*		
All Races	50 and Over	1975-1981	-1.9	1981-1987	25.8*	1987-2000	6.9*	2000-2003	-1.4
White	All Ages	1975-1982	-0.7	1982-1986	32.8*	1986-2000	6.0*	2000-2003	-1.4
White	Under 50	1975-1982	-4.0	1982-1985	42.2	1985-2003	3.5*		
White	50 and Over	1975-1981	-1.3	1981-1987	26.0*	1987-2000	6.6*	2000-2003	-1.5
Black	All Ages	1975-1981	3.1	1981-1988	18.5*	1988-1999	7.6*	1999-2003	-0.7
Black	Under 50	1975-1998	7.7*	1998-2003	-3.8				
Black	50 and Over	1975-1980	-1.9	1980-1988	20.8*	1988-2000	8.1*	2000-2003	-2.5
<u>SEER Delay-Adjusted Incidence^a</u>									
All Races	All Ages	1975-1982	-0.8	1982-1986	32.2*	1986-2000	6.1*	2000-2003	-1.0
All Races	Under 50	1975-1982	-2.5	1982-1986	29.2*	1986-2003	3.3*		
All Races	50 and Over	1975-1981	-1.9	1981-1987	25.8*	1987-2000	6.8*	2000-2003	-1.1
White	All Ages	1975-1982	-0.7	1982-1986	32.8*	1986-2000	6.0*	2000-2003	-0.7
White	Under 50	1975-1982	-4.0	1982-1985	42.0	1985-2003	3.6*		
White	50 and Over	1975-1981	-1.3	1981-1987	26.0*	1987-2000	6.7*	2000-2003	-0.8
Black	All Ages	1975-1981	3.1	1981-1988	18.5*	1988-1999	7.6*	1999-2003	-0.2
Black	Under 50	1975-1998	7.7*	1998-2003	-3.5				
Black	50 and Over	1975-1980	-1.9	1980-1988	20.8*	1988-2000	8.1*	2000-2003	-1.8

Joinpoint Regression Program Version 3.1, April 2006, National Cancer Institute. (<http://srab.cancer.gov/joinpoint/>).

The APC is the Annual Percent Change based on rates age-adjusted to the 2000 US Std Population (19 age groups - Census P25-1130).

^a Trends are from the SEER 9 areas (San Francisco, Connecticut, Detroit, Hawaii, Iowa, New Mexico, Seattle, Utah, and Atlanta).

* The APC is significantly different from zero (p<.05).

Table IV-3
BREAST CANCER (Invasive)

AGE ADJUSTED SEER INCIDENCE^a RATES BY YEAR, RACE AND SEX

	<u>All Races</u>			<u>Whites</u>			<u>Blacks</u>		
	<u>Total</u>	<u>Males</u>	<u>Females</u>	<u>Total</u>	<u>Males</u>	<u>Females</u>	<u>Total</u>	<u>Males</u>	<u>Females</u>
<u>AGE-ADJUSTED RATES</u>									
<u>YEAR OF DIAGNOSIS:</u>									
1975	58.0	0.9	105.0	59.4	0.9	107.3	52.1	-	93.5
1976	56.4	1.1	101.9	58.1	1.1	104.8	48.0	-	85.2
1977	56.0	1.0	100.8	57.5	0.9	103.4	49.7	-	87.0
1978	55.8	0.9	100.6	57.5	0.9	103.6	48.3	-	86.1
1979	56.8	1.0	102.1	58.3	0.9	104.8	49.9	-	86.9
1980	56.8	0.9	102.1	58.5	1.0	105.0	50.5	-	89.4
1981	59.3	1.0	106.3	61.2	0.9	109.9	54.4	-	94.3
1982	59.2	1.0	106.4	61.1	0.9	109.9	53.9	-	93.5
1983	61.9	1.0	111.1	63.7	1.1	114.5	58.8	-	103.4
1984	64.4	0.9	115.8	66.5	0.9	119.8	58.1	-	101.8
1985	69.0	1.0	124.1	71.0	1.0	127.8	63.9	-	111.4
1986	70.4	0.9	126.7	72.3	1.0	130.3	66.3	-	115.1
1987	74.8	1.0	134.4	77.8	1.0	140.4	63.0	-	109.3
1988	73.0	1.2	131.2	75.6	1.2	136.3	68.9	2.8	118.5
1989	70.7	1.1	127.1	73.3	1.1	132.3	60.4	-	104.7
1990	73.1	1.1	131.7	75.3	1.1	136.2	68.2	-	118.0
1991	74.0	1.1	133.6	76.5	1.2	138.7	67.2	-	117.0
1992	72.9	1.0	131.8	74.6	1.0	135.6	71.2	-	123.2
1993	71.2	1.1	129.0	73.1	1.0	133.1	68.7	-	119.3
1994	72.0	1.1	130.8	74.2	1.1	135.5	70.2	-	121.8
1995	72.7	1.0	132.3	75.0	0.9	137.3	71.6	-	123.6
1996	73.1	1.3	133.3	75.1	1.3	137.7	71.0	-	123.2
1997	75.3	1.1	137.4	77.4	1.1	142.3	71.6	-	123.8
1998	77.0	1.1	140.8	79.5	1.2	146.3	70.1	-	122.2
1999	76.8	1.1	140.6	79.2	1.0	146.3	71.8	2.2	124.0
2000	73.9	1.2	135.7	76.9	1.2	142.4	67.4	2.9	116.1
2001	74.8	1.3	137.3	77.5	1.3	143.6	65.5	1.7	113.4
2002	72.7	1.2	133.8	75.0	1.2	139.4	69.5	2.3	120.2
2003	67.5	1.5	124.2	69.1	1.5	128.5	69.5	2.0	120.5
1975-2003	68.7	1.1	124.4	70.6	1.1	128.4	64.1	1.7	111.5

^a SEER 9 areas (San Francisco, Connecticut, Detroit, Hawaii, Iowa, New Mexico, Seattle, Utah, and Atlanta). Rates are per 100,000 and are age-adjusted to the 2000 US Std Population (19 age groups - Census P25-1130).

- Statistic not shown. Rate based on less than 16 cases for the time interval.

Table IV-4
BREAST CANCER (Invasive)

AGE-ADJUSTED U.S. DEATH^a RATES BY YEAR, RACE AND SEX

	<u>All Races</u>			<u>Whites</u>			<u>Blacks</u>		
	<u>Total</u>	<u>Males</u>	<u>Females</u>	<u>Total</u>	<u>Males</u>	<u>Females</u>	<u>Total</u>	<u>Males</u>	<u>Females</u>
<u>AGE-ADJUSTED RATES</u>									
<u>YEAR OF DEATH:</u>									
1975	17.8	0.4	31.4	18.0	0.4	31.8	16.8	0.4	29.5
1976	18.1	0.4	31.8	18.2	0.4	32.2	17.6	0.6	30.5
1977	18.5	0.4	32.5	18.6	0.4	32.7	18.9	0.5	32.8
1978	18.0	0.4	31.7	18.1	0.3	31.9	18.6	0.6	32.1
1979	17.7	0.3	31.2	17.9	0.3	31.5	17.9	0.5	30.8
1980	18.0	0.3	31.7	18.1	0.3	31.9	18.4	0.4	31.7
1981	18.2	0.3	31.9	18.3	0.3	32.1	19.0	0.5	32.6
1982	18.4	0.3	32.2	18.4	0.3	32.3	19.7	0.6	33.7
1983	18.3	0.3	32.1	18.4	0.3	32.2	19.6	0.5	33.5
1984	18.8	0.3	32.9	18.8	0.3	32.9	21.0	0.5	35.9
1985	18.8	0.3	33.0	18.9	0.3	33.1	20.3	0.4	34.9
1986	18.8	0.3	32.9	18.8	0.3	32.9	20.7	0.4	35.4
1987	18.7	0.3	32.7	18.6	0.3	32.6	21.5	0.5	36.7
1988	19.0	0.3	33.2	18.9	0.3	33.1	22.4	0.9	37.8
1989	19.0	0.3	33.2	18.9	0.3	33.2	21.6	0.5	36.6
1990	18.9	0.3	33.1	18.8	0.3	33.0	22.5	0.5	38.0
1991	18.7	0.3	32.7	18.5	0.3	32.4	22.6	0.4	38.3
1992	18.1	0.3	31.6	17.9	0.3	31.4	21.9	0.4	37.1
1993	18.0	0.4	31.4	17.7	0.3	31.1	22.6	0.7	38.0
1994	17.7	0.4	30.9	17.4	0.3	30.6	22.4	0.6	37.7
1995	17.4	0.4	30.6	17.1	0.3	30.1	22.7	0.8	38.2
1996	16.8	0.3	29.5	16.5	0.3	29.0	22.1	0.7	37.1
1997	16.1	0.3	28.2	15.7	0.3	27.6	22.3	0.6	37.4
1998	15.7	0.3	27.5	15.3	0.3	27.0	21.1	0.6	35.5
1999	15.2	0.3	26.6	14.8	0.3	26.0	20.9	0.7	35.2
2000	15.2	0.4	26.6	14.9	0.4	26.2	20.5	0.6	34.4
2001	14.7	0.3	26.0	14.3	0.3	25.4	20.5	0.6	34.5
2002	14.5	0.3	25.6	14.1	0.3	25.0	20.3	0.6	34.1
2003	14.2	0.3	25.2	13.8	0.3	24.6	20.2	0.5	34.1
1975-2003	17.4	0.3	30.5	17.2	0.3	30.3	20.7	0.6	35.2

^a NCHS public use data file for the total US. Rates are per 100,000 and are age-adjusted to the 2000 US Std Population (19 age groups - Census P25-1130).

- Statistic not shown. Rate based on less than 16 cases for the time interval.

Table IV-5
 FEMALE BREAST CANCER (Invasive)

AGE-ADJUSTED SEER INCIDENCE^a RATES BY YEAR, RACE AND AGE

	All Races, Females			White Females			Black Females		
	All	<50	50+	All	<50	50+	All	<50	50+
<u>SEER INCIDENCE RATES</u>									
YEAR OF DIAGNOSIS:									
1975	105.0	40.6	273.8	107.3	40.7	281.8	93.5	42.6	226.9
1976	101.9	40.0	264.0	104.8	40.9	272.3	85.2	37.8	209.3
1977	100.8	39.1	262.4	103.4	39.5	271.0	87.0	37.6	216.4
1978	100.6	38.8	262.3	103.6	39.3	272.0	86.1	40.2	206.1
1979	102.1	38.0	269.9	104.8	38.7	277.9	86.9	37.7	215.7
1980	102.1	37.7	270.7	105.0	38.2	279.8	89.4	37.6	225.0
1981	106.3	39.2	282.0	109.9	40.1	292.5	94.3	38.9	239.6
1982	106.4	40.5	279.1	109.9	41.2	289.9	93.5	37.9	238.9
1983	111.1	40.2	296.7	114.5	40.9	307.1	103.4	41.2	266.0
1984	115.8	42.3	308.3	119.8	43.2	320.6	101.8	44.5	252.1
1985	124.1	44.3	333.1	127.8	44.4	346.0	111.4	45.4	284.2
1986	126.7	44.4	342.4	130.3	45.2	353.2	115.1	45.3	297.7
1987	134.4	45.5	367.4	140.4	46.6	385.7	109.3	43.0	282.7
1988	131.2	44.0	359.7	136.3	45.0	375.4	118.5	42.9	316.4
1989	127.1	43.4	346.3	132.3	44.4	362.2	104.7	42.2	268.5
1990	131.7	45.6	357.1	136.2	45.4	373.8	118.0	48.8	299.3
1991	133.6	47.1	360.1	138.7	47.1	378.5	117.0	50.8	290.6
1992	131.8	43.3	363.5	135.6	43.6	376.5	123.2	46.8	323.3
1993	129.0	42.7	355.0	133.1	43.2	368.4	119.3	45.2	313.5
1994	130.8	42.3	362.4	135.5	42.6	378.9	121.8	47.3	316.7
1995	132.3	43.0	366.1	137.3	43.7	382.7	123.6	45.3	328.7
1996	133.3	43.3	368.8	137.7	43.7	383.9	123.2	43.9	330.7
1997	137.4	43.3	383.7	142.3	43.9	400.0	123.8	44.0	332.9
1998	140.8	45.2	391.2	146.3	45.5	410.1	122.2	46.0	321.7
1999	140.6	43.4	395.1	146.3	44.7	412.2	124.0	43.0	336.1
2000	135.7	43.2	377.9	142.4	43.7	400.6	116.1	44.2	304.7
2001	137.3	43.4	383.1	143.6	44.3	403.5	113.4	39.3	307.4
2002	133.8	42.1	374.0	139.4	42.8	392.4	120.2	40.0	330.1
2003	124.2	42.3	338.5	128.5	43.0	352.4	120.5	42.1	325.8
1975-2003	124.4	42.7	338.4	128.4	43.3	351.4	111.5	43.3	290.1

^a SEER 9 areas (San Francisco, Connecticut, Detroit, Hawaii, Iowa, New Mexico, Seattle, Utah, and Atlanta). Rates are per 100,000 and are age-adjusted to the 2000 US Std Population (19 age groups - Census P25-1130).
 - Statistic not shown. Rate based on less than 16 cases for the time interval.

Table IV-6
 FEMALE BREAST CANCER (Invasive)

AGE-ADJUSTED U.S. DEATH^a RATES BY YEAR, RACE AND AGE

	All Races, Females			White Females			Black Females		
	All	<50	50+	All	<50	50+	All	<50	50+
<u>U.S. DEATH RATES</u>									
YEAR OF DEATH:									
1975	31.4	9.1	89.9	31.8	9.0	91.4	29.5	10.7	78.8
1976	31.8	8.7	92.2	32.2	8.6	93.8	30.5	10.2	83.5
1977	32.5	8.9	94.3	32.7	8.7	95.3	32.8	10.5	91.1
1978	31.7	8.7	92.1	31.9	8.5	93.3	32.1	11.4	86.5
1979	31.2	8.6	90.5	31.5	8.3	92.1	30.8	11.4	81.8
1980	31.7	8.6	92.2	31.9	8.4	93.6	31.7	10.8	86.3
1981	31.9	8.5	93.3	32.1	8.2	94.8	32.6	11.5	87.7
1982	32.2	8.4	94.4	32.3	8.2	95.5	33.7	11.2	92.8
1983	32.1	8.2	94.7	32.2	7.9	95.8	33.5	11.2	92.1
1984	32.9	8.6	96.6	32.9	8.2	97.5	35.9	12.5	97.2
1985	33.0	8.6	96.9	33.1	8.3	98.1	34.9	12.0	94.6
1986	32.9	8.6	96.3	32.9	8.3	97.5	35.4	12.9	94.6
1987	32.7	8.4	96.1	32.6	8.0	96.9	36.7	12.9	99.0
1988	33.2	8.4	98.2	33.1	8.0	98.8	37.8	12.7	103.4
1989	33.2	8.4	98.2	33.2	8.1	99.2	36.6	12.4	100.0
1990	33.1	8.3	98.1	33.0	8.0	98.5	38.0	12.0	106.1
1991	32.7	8.2	96.9	32.4	7.7	97.2	38.3	12.3	106.3
1992	31.6	7.8	94.2	31.4	7.4	94.5	37.1	12.0	102.7
1993	31.4	7.4	94.2	31.1	7.0	94.2	38.0	11.7	107.1
1994	30.9	7.4	92.6	30.6	6.9	92.5	37.7	11.7	105.9
1995	30.6	7.3	91.5	30.1	6.8	91.1	38.2	11.7	107.5
1996	29.5	6.9	88.5	29.0	6.4	88.3	37.1	11.7	103.6
1997	28.2	6.7	84.5	27.6	6.2	83.6	37.4	11.0	106.6
1998	27.5	6.3	83.1	27.0	5.8	82.5	35.5	10.6	100.7
1999	26.6	5.7	81.2	26.0	5.2	80.4	35.2	10.3	100.5
2000	26.6	5.9	81.0	26.2	5.4	80.6	34.4	9.9	98.3
2001	26.0	5.9	78.7	25.4	5.4	77.9	34.5	9.9	99.1
2002	25.6	5.6	77.8	25.0	5.1	77.1	34.1	10.0	97.2
2003	25.2	5.6	76.6	24.6	5.1	75.6	34.1	9.7	98.0
1975-2003	30.5	7.5	90.6	30.3	7.1	91.1	35.2	11.2	97.9

^a NCHS public use data file for the total US. Rates are per 100,000 and are age-adjusted to the 2000 US Std Population (19 age groups - Census P25-1130).

- Statistic not shown. Rate based on less than 16 cases for the time interval.

Table IV-7
 FEMALE BREAST CANCER (*In Situ*)

AGE ADJUSTED SEER INCIDENCE^a RATES BY YEAR, RACE AND AGE

	All Races, Females			White Females			Black Females		
	All	<50	50+	All	<50	50+	All	<50	50+
<u>SEER INCIDENCE RATES</u>									
YEAR OF DIAGNOSIS:									
1975	5.8	3.8	11.2	5.9	3.8	11.3	3.9	-	8.3
1976	5.3	2.7	12.0	5.4	2.9	11.8	3.3	-	9.4
1977	4.3	2.6	8.7	4.3	2.6	8.9	3.0	-	-
1978	4.4	2.3	9.8	4.5	2.5	10.0	3.3	-	-
1979	4.6	2.8	9.3	4.7	2.9	9.4	4.8	-	9.6
1980	4.9	3.0	9.7	5.0	3.1	10.2	3.7	-	-
1981	5.0	2.6	11.0	4.9	2.5	11.3	4.1	-	8.7
1982	5.3	2.7	12.0	5.3	2.7	12.2	5.6	2.7	12.9
1983	6.1	3.0	14.1	6.2	3.0	14.6	5.4	-	13.2
1984	8.6	4.8	18.7	9.2	5.2	19.6	6.3	2.4	16.8
1985	11.5	5.9	26.2	12.1	6.3	27.3	8.2	3.5	20.6
1986	13.6	6.8	31.7	14.3	7.2	32.8	9.3	5.1	20.4
1987	17.4	7.8	42.4	18.2	8.3	44.2	12.3	5.5	30.1
1988	17.6	8.2	42.2	18.1	8.5	43.3	16.1	7.4	38.9
1989	16.5	7.0	41.4	17.1	7.3	42.7	14.5	5.5	38.1
1990	19.1	8.4	47.2	19.9	8.7	49.2	15.1	5.5	40.0
1991	19.8	8.8	48.6	20.4	8.8	50.8	15.3	7.3	36.3
1992	21.5	9.0	54.1	22.2	9.2	56.2	19.1	6.8	51.2
1993	20.7	8.4	53.1	21.3	8.8	54.2	16.6	6.1	44.2
1994	22.3	8.8	57.8	22.9	9.1	59.2	20.1	7.4	53.3
1995	24.7	9.6	64.1	25.0	9.9	64.6	22.6	6.4	65.2
1996	25.4	9.8	66.1	25.9	9.8	68.1	22.3	7.6	61.0
1997	28.4	11.1	73.6	29.0	11.2	75.4	27.8	11.3	71.1
1998	32.8	12.0	87.3	33.8	12.3	90.0	30.2	10.8	81.2
1999	32.7	12.0	87.1	33.1	12.2	87.9	29.6	10.4	79.8
2000	32.8	11.8	87.8	33.9	12.5	89.8	29.4	8.0	85.2
2001	33.5	11.5	91.0	34.0	11.9	91.9	31.3	9.0	89.6
2002	33.8	11.8	91.5	34.2	12.1	92.1	28.6	8.6	81.0
2003	31.9	11.8	84.6	32.7	12.2	86.5	29.5	9.3	82.6
1975-2003	19.0	8.1	47.6	19.1	8.2	47.7	17.4	6.6	45.6

^a SEER 9 areas (San Francisco, Connecticut, Detroit, Hawaii, Iowa, New Mexico, Seattle, Utah, and Atlanta). Rates are per 100,000 and are age-adjusted to the 2000 US Std Population (19 age groups - Census P25-1130).
 - Statistic not shown. Rate based on less than 16 cases for the time interval.

Table IV-8
BREAST CANCER (Invasive)

SEER INCIDENCE^a AND U.S. DEATH^b RATES, AGE-ADJUSTED AND AGE-SPECIFIC RATES, BY RACE AND SEX

	All Races			Whites			Blacks		
	Total	Males	Females	Total	Males	Females	Total	Males	Females
<u>SEER INCIDENCE</u>									
<u>AGE AT DIAGNOSIS</u>									
AGE-ADJUSTED RATES, 2000-2003									
All ages	70.4	1.3	129.1	72.4	1.2	134.0	67.9	2.0	118.0
Under 65	44.0	0.5	85.7	44.7	0.5	88.0	44.2	0.9	81.3
65 and over	252.6	6.2	429.7	264.1	6.3	451.6	231.8	9.3	372.2
All ages(IARC world std) ^c	49.7	0.8	93.3	51.1	0.8	96.8	48.2	1.3	85.6
AGE-SPECIFIC RATES, 2000-2003									
<1	-	-	-	-	-	-	-	-	-
1-4	-	-	-	-	-	-	-	-	-
5-9	-	-	-	-	-	-	-	-	-
10-14	-	-	-	-	-	-	-	-	-
15-19	0.1	-	0.2	-	-	-	-	-	-
20-24	0.7	-	1.3	0.6	-	1.3	1.1	-	2.2
25-29	3.8	-	7.7	3.6	-	7.5	5.5	-	10.6
30-34	12.5	0.2	25.2	12.0	-	24.6	16.7	-	31.8
35-39	29.4	0.2	58.9	28.5	0.2	58.1	34.1	-	64.8
40-44	59.0	0.5	117.2	58.8	0.5	118.2	62.6	-	118.1
45-49	94.9	0.9	186.3	95.8	1.0	190.4	95.7	-	178.5
50-54	123.6	1.3	240.4	125.7	1.3	247.7	125.5	2.3	230.2
55-59	163.5	2.4	315.3	168.3	2.3	328.0	154.9	4.5	279.9
60-64	194.4	3.3	368.7	202.6	3.2	388.0	175.3	5.9	311.5
65-69	226.1	4.5	415.7	238.5	4.8	442.7	201.0	6.0	349.6
70-74	246.7	5.7	438.2	257.7	5.9	462.0	228.6	7.6	382.0
75-79	279.4	6.3	470.5	292.5	6.3	494.0	252.2	11.1	401.7
80-84	273.4	8.2	437.9	283.8	8.2	454.7	254.9	-	385.9
85+	252.9	8.2	362.5	261.3	8.3	372.8	243.9	-	334.9
<u>U.S. MORTALITY</u>									
<u>AGE AT DEATH</u>									
AGE-ADJUSTED RATES, 2000-2003									
All ages	14.6	0.3	25.8	14.3	0.3	25.3	20.4	0.6	34.3
Under 65	6.9	0.1	13.3	6.4	0.1	12.5	11.2	0.2	20.4
65 and over	68.5	1.9	112.6	68.5	1.8	113.1	83.9	3.0	130.2
All ages(IARC world std) ^c	9.2	0.2	16.9	8.9	0.2	16.4	13.4	0.4	23.3
AGE-SPECIFIC RATES, 2000-2003									
<1	-	-	-	-	-	-	-	-	-
1-4	-	-	-	-	-	-	-	-	-
5-9	-	-	-	-	-	-	-	-	-
10-14	-	-	-	-	-	-	-	-	-
15-19	-	-	-	-	-	-	-	-	-
20-24	0.1	-	0.1	0.0	-	0.1	0.1	-	0.3
25-29	0.4	-	0.8	0.3	-	0.6	0.9	-	1.7
30-34	1.8	-	3.6	1.5	-	3.1	3.7	-	7.0
35-39	4.3	0.1	8.5	3.8	-	7.6	7.8	-	14.7
40-44	8.0	0.1	15.9	7.2	0.0	14.4	14.7	-	27.5
45-49	13.1	0.1	25.7	12.0	0.1	23.7	23.0	0.3	42.7
50-54	19.9	0.3	38.7	18.7	0.3	36.8	32.2	0.6	59.0
55-59	27.0	0.5	52.0	25.8	0.4	50.0	42.8	0.9	77.1
60-64	34.1	0.7	64.4	33.4	0.7	63.5	47.4	1.5	83.4
65-69	41.6	1.0	76.5	41.1	1.0	76.4	54.9	1.7	94.3
70-74	53.3	1.5	94.6	53.2	1.4	95.2	67.0	2.5	110.2
75-79	68.1	1.9	114.6	68.4	1.9	115.8	81.3	2.9	128.2
80-84	88.8	2.6	140.8	88.9	2.5	141.4	107.8	3.7	161.4
85+	136.8	3.7	193.4	137.2	3.6	194.0	159.9	6.5	218.3

^a SEER 17 areas. Rates are per 100,000 and are age-adjusted to the 2000 US Std Population (19 age groups - Census P25-1130), unless noted.

^b NCHS public use data file for the total US. Rates are per 100,000 and are age-adjusted to the 2000 US Std Population (19 age groups - Census P25-1130), unless noted.

^c Rates are per 100,000 and are age-adjusted to the IARC world standard population.

- Statistic not shown. Rate based on less than 16 cases for the time interval.

Table IV-9
 FEMALE BREAST CANCER (*In Situ*)

SEER INCIDENCE^a RATES, AGE-ADJUSTED AND AGE-SPECIFIC RATES, BY RACE

	All Races, Females	White Females	Black Females
<u>AGE-ADJUSTED RATES, 2000-2003</u>			
AGE AT DIAGNOSIS:			
All ages	29.4	30.1	25.0
Under 65	21.8	22.5	17.5
65 and over	81.4	83.1	76.8
All ages(IARC world std) ^b	22.2	22.8	18.8
<u>AGE-SPECIFIC RATES, 2000-2003</u>			
AGE AT DIAGNOSIS:			
<1	-	-	-
1-4	-	-	-
5-9	-	-	-
10-14	-	-	-
15-19	-	-	-
20-24	0.2	-	-
25-29	0.7	0.7	-
30-34	2.4	2.3	3.0
35-39	9.8	10.3	8.2
40-44	33.3	34.7	22.0
45-49	53.1	55.0	39.2
50-54	67.0	68.0	54.5
55-59	80.7	82.7	70.1
60-64	87.4	89.6	74.2
65-69	97.7	100.1	93.4
70-74	92.7	95.0	90.2
75-79	85.8	87.4	79.9
80-84	64.8	66.1	53.4
85+	33.6	33.0	34.0

^a SEER 17 areas. Rates are per 100,000 and are age-adjusted to the 2000 US Std Population (19 age groups - Census P25-1130), unless noted.

^b Rates are per 100,000 and are age-adjusted to the IARC world standard population.

- Statistic not shown. Rate based on less than 16 cases for the time interval.

Table IV-10
FEMALE BREAST CANCER (Invasive)

SURVIVAL RATES, BY RACE, DIAGNOSIS YEAR, STAGE AND AGE

	All Races, Females			White Females			Black Females		
	All	<50	50+	All	<50	50+	All	<50	50+
<u>5-YR RELATIVE SURVIVAL RATES</u>									
YEAR OF DIAGNOSIS:									
1960-1963 ^a	-	-	-	63	-	-	46	-	-
1970-1973 ^a	-	-	-	68	-	-	51	-	-
1975-1977 ^b	75.1	76.6	74.6	75.8	77.8	75.2	62.5	62.9	62.3
1978-1980 ^b	74.8	75.5	74.6	75.6	76.2	75.4	63.9	67.0	62.1
1981-1983 ^b	76.7	77.4	76.5	77.7	78.6	77.4	64.0	65.2	63.4
1984-1986 ^b	79.3	77.9	79.8	80.4	79.7	80.6	65.1	63.8	65.9
1987-1989 ^b	84.2	81.4	85.2	85.3	82.8	86.2	71.2	69.4	72.2
1990-1992 ^b	85.4	83.3	86.2	86.7	85.1	87.2	71.6	70.0	72.7
1993-1995 ^b	86.6	84.2	87.6	88.0	86.3	88.6	72.9	70.0	74.7
1996-2002 ^b	89.0 ^e	87.1 ^e	89.7 ^e	90.1 ^e	88.8 ^e	90.6 ^e	77.3 ^e	75.9 ^e	78.2 ^e
<u>5-YR PERIOD SURVIVAL RATES^{cd}</u>									
YEAR OF DIAGNOSIS:									
1996-2002	89.1	86.7	90.0	90.1	88.2	90.8	78.5	76.3	79.8
<u>STAGE DISTRIBUTION (%) 1996-2002^c</u>									
All Stages									
Number of cases	211,875	52,253	159,622	177,883	40,737	137,146	18,478	6,174	12,304
Percent	100%	100%	100%	100%	100%	100%	100%	100%	100%
Localized	61	54	64	62	55	64	52	46	54
Regional	31	39	28	30	39	28	36	43	33
Distant	6	5	6	6	5	6	9	9	10
Unstaged	2	2	2	2	1	2	3	2	3
<u>5-YR RELATIVE SURVIVAL RATES, 1996-2002^c</u>									
AGE AT DIAGNOSIS:									
<45	84.6	-	-	86.3	-	-	73.0	-	-
45-54	89.0	-	-	90.2	-	-	78.6	-	-
55-64	90.0	-	-	91.2	-	-	79.1	-	-
65-74	90.5	-	-	91.2	-	-	80.2	-	-
75+	87.5	-	-	88.2	-	-	75.2	-	-
Under 65	88.3	-	-	89.7	-	-	77.0	-	-
65 and over	89.3	-	-	90.0	-	-	78.2	-	-
STAGE:									
All Stages	88.5	86.5	89.3	89.7	88.0	90.2	77.3	75.2	78.4
Localized	98.1	95.3	98.9	98.5	95.8	99.3	93.6	90.4	95.2
Regional	83.1	82.4	83.5	84.6	84.2	84.7	71.8	72.0	71.6
Distant	26.0	32.5	23.7	27.7	36.6	24.9	16.1	17.6	15.2
Unstaged	54.1	66.8	50.3	56.0	72.4	51.6	44.9	47.2 ^f	43.3
<i>IN SITU</i> ^h	100.0	100.0	100.0	100.0	100.0	100.0	100.0	99.1	100.0

^a Rates are based on End Results data from a series of hospital registries and one population-based registry.

^b Rates are from the SEER 9 areas (San Francisco, Connecticut, Detroit, Hawaii, Iowa, New Mexico, Seattle, Utah, Atlanta). Rates are based on follow-up of patients into 2003.

^c Rates are from the SEER 17 areas (San Francisco, Connecticut, Detroit, Hawaii, Iowa, New Mexico, Seattle, Utah, Atlanta, San Jose-Monterey, Los Angeles, Alaska Native Registry, Rural Georgia, California excluding SF/SJM/LA, Kentucky, Louisiana and New Jersey). California excluding SF/SJM/LA, Kentucky, Louisiana, and New Jersey contribute cases for diagnosis years 2000-2002. The remaining 13 SEER Areas contribute cases for the entire period 1996-2002. Rates are based on follow-up of patients into 2003.

^d Period survival provides a more up-to-date estimate of survival by piecing together the most recent conditional survival estimates from several cohorts. It is computed here using three calendar year blocks (2000-2002: 0-1 year survival), (1999-2001: 1-2 year survival), (1998-2000: 2-3 year survival), (1997-1999: 3-4 year survival), (1996-1998: 4-5 years survival).

^e The difference in rates between 1975-1977 and 1996-2002 is statistically significant ($p < .05$).

^f The standard error of the survival rate is between 5 and 10 percentage points.

^g The standard error of the survival rate is greater than 10 percentage points.

^h *In situ* cases are not included in the All Stages group.

- Statistic could not be calculated due to fewer than 16 cases during the time period.

Table IV-11
FEMALE BREAST CANCER (Invasive)

SURVIVAL RATES^a

By Year of Diagnosis

All Races, Females

Year of Diagnosis

	1975- 1979	1980- 1984	1985	1986	1987	1988	1989	1990	1991	1992	1993	1994	1995	1996	1997	1998	1999	2000	2001	2002
Relative Survival Rates (SEER ^b)																				
1-year	94.7	95.5	95.8	96.3	96.8	96.8	97.0	97.0	97.3	97.4	97.2	97.6	97.3	97.2	97.6	97.7	97.6	97.7	97.6	97.7
2-year	88.9	90.5	91.2	91.7	93.3	93.4	93.3	93.4	93.9	94.4	94.1	94.4	94.2	94.0	94.6	95.2	95.3	95.6	95.4	
3-year	83.3	85.1	86.3	87.0	89.2	90.1	90.0	89.8	90.2	91.2	91.0	91.2	91.5	91.2	92.3	93.2	93.3	93.7		
4-year	78.7	80.7	82.3	83.5	86.0	87.3	87.2	86.9	87.7	88.3	88.3	88.8	89.0	89.3	90.2	91.3	91.5			
5-year	74.8	76.9	78.8	80.5	83.3	84.7	84.7	84.7	85.4	86.0	86.1	86.8	87.0	87.1	88.6	89.8				
6-year	71.7	73.9	76.3	78.2	80.7	82.5	82.4	82.7	83.6	84.2	84.1	85.3	85.6	85.4	87.2					
7-year	69.0	71.1	74.2	75.9	78.5	80.7	80.7	80.8	81.8	82.6	82.5	83.8	84.0	84.3						
8-year	66.7	68.8	72.3	74.4	77.0	79.2	79.3	79.5	80.3	81.7	80.9	83.1	82.8							
9-year	64.6	66.8	70.3	72.7	75.2	77.5	78.0	78.1	79.0	80.7	79.9	81.9								
10-year	62.8	64.9	68.7	71.1	73.9	76.6	76.9	77.0	77.9	79.8	78.9									
11-year	61.2	63.1	67.3	70.0	72.3	75.4	75.9	76.0	77.2	78.8										
12-year	59.7	61.9	66.2	68.6	71.0	74.3	74.5	75.1	76.0											
13-year	58.5	60.8	65.4	67.6	69.8	73.3	73.6	74.0												
14-year	57.5	59.6	64.7	66.7	68.6	72.7	72.7													
15-year	56.5	58.8	63.7	65.3	67.9	71.8														
16-year	55.6	57.7	62.6	64.5	66.8															
17-year	54.7	56.8	61.4	63.9																
18-year	53.9	56.1	60.4																	
19-year	53.2	55.5																		
20-year	52.5																			

^a Survival rates are relative rates expressed as percents.

^b Rates are from the SEER 9 areas (San Francisco, Connecticut, Detroit, Hawaii, Iowa, New Mexico, Seattle, Utah, and Atlanta).

Table IV-12
FEMALE BREAST CANCER (Under 50) (Invasive)

SURVIVAL RATES^a

By Year of Diagnosis

All Races, Females

Year of Diagnosis

	1975- 1979	1980- 1984	1985	1986	1987	1988	1989	1990	1991	1992	1993	1994	1995	1996	1997	1998	1999	2000	2001	2002
Relative Survival Rates (SEER ^b)																				
1-year	96.8	97.6	97.6	97.9	98.1	98.4	98.1	97.6	98.4	98.4	98.0	98.4	98.0	97.8	98.1	98.4	98.6	98.5	98.5	98.6
2-year	90.9	91.5	91.9	92.3	92.7	93.8	93.1	93.1	93.9	94.6	94.3	93.6	93.7	93.9	94.7	95.2	95.1	95.7	94.9	
3-year	84.6	85.6	85.8	86.1	87.2	89.2	88.7	88.4	90.0	90.8	90.2	89.3	89.9	90.7	91.7	92.3	92.1	93.0		
4-year	80.1	81.0	81.3	82.1	83.1	85.6	84.9	85.0	86.7	86.4	87.1	86.1	86.6	88.2	88.8	89.5	89.9			
5-year	76.1	77.1	77.9	78.5	79.8	82.5	82.1	82.3	83.8	83.7	84.7	83.9	84.1	85.5	86.8	87.3				
6-year	73.3	74.1	75.7	75.9	77.3	80.4	79.7	80.1	81.6	81.6	82.9	81.8	82.2	83.2	84.7					
7-year	70.8	71.6	73.6	73.2	75.0	78.4	78.0	78.5	79.5	80.2	81.2	80.1	80.1	81.6						
8-year	68.8	69.4	71.8	71.5	73.4	76.7	76.6	76.6	78.0	78.5	79.5	78.9	78.5							
9-year	66.9	67.6	69.9	70.4	71.5	75.3	75.0	75.4	77.1	77.5	78.5	77.4								
10-year	65.4	66.1	68.7	69.3	70.0	74.0	74.2	74.3	76.2	76.7	77.3									
11-year	64.1	64.8	67.9	68.3	68.6	73.0	73.2	73.4	75.2	75.8										
12-year	62.6	63.8	66.7	67.1	67.1	72.5	72.1	72.5	73.8											
13-year	61.5	62.8	65.7	66.1	66.3	71.5	71.1	71.5												
14-year	60.8	61.7	65.1	65.4	65.5	71.0	70.3													
15-year	60.0	60.9	64.2	64.6	64.8	70.2														
16-year	59.3	60.2	63.4	64.0	64.2															
17-year	58.7	59.5	62.5	63.4																
18-year	58.1	58.9	61.7																	
19-year	57.5	58.5																		
20-year	56.8																			

^a Survival rates are relative rates expressed as percents.

^b Rates are from the SEER 9 areas (San Francisco, Connecticut, Detroit, Hawaii, Iowa, New Mexico, Seattle, Utah, and Atlanta).

Table IV-13
 FEMALE BREAST CANCER (50 and Over) (Invasive)

SURVIVAL RATES^a

By Year of Diagnosis

All Races, Females

Year of Diagnosis

	1975- 1979	1980- 1984	1985	1986	1987	1988	1989	1990	1991	1992	1993	1994	1995	1996	1997	1998	1999	2000	2001	2002
Relative Survival Rates (SEER ^b)																				
1-year	94.0	94.9	95.3	95.8	96.5	96.4	96.6	96.8	96.9	97.1	96.9	97.3	97.1	97.0	97.4	97.5	97.3	97.4	97.3	97.4
2-year	88.2	90.2	91.0	91.5	93.5	93.3	93.4	93.5	93.8	94.4	94.1	94.7	94.3	94.0	94.6	95.2	95.4	95.6	95.5	
3-year	82.9	84.9	86.5	87.3	89.9	90.4	90.5	90.3	90.3	91.3	91.3	91.9	92.1	91.4	92.5	93.6	93.7	93.9		
4-year	78.2	80.6	82.6	84.0	87.0	87.8	88.0	87.7	88.1	89.0	88.8	89.8	89.9	89.7	90.7	92.0	92.0			
5-year	74.4	76.8	79.1	81.2	84.5	85.5	85.6	85.7	86.1	86.9	86.6	87.9	88.1	87.7	89.3	90.7				
6-year	71.2	73.8	76.6	79.1	81.8	83.3	83.4	83.7	84.4	85.3	84.6	86.6	87.0	86.3	88.2					
7-year	68.3	70.9	74.4	76.9	79.8	81.5	81.7	81.7	82.8	83.6	83.1	85.3	85.6	85.5						
8-year	65.9	68.6	72.5	75.5	78.4	80.2	80.4	80.7	81.3	83.1	81.6	84.8	84.6							
9-year	63.7	66.5	70.5	73.7	76.7	78.4	79.3	79.4	79.8	82.2	80.6	83.8								
10-year	61.8	64.4	68.7	71.9	75.5	77.6	78.1	78.3	78.8	81.2	79.7									
11-year	60.0	62.4	67.1	70.7	73.9	76.5	77.2	77.3	78.3	80.3										
12-year	58.4	61.1	66.0	69.4	72.8	75.2	75.8	76.5	77.3											
13-year	57.2	60.0	65.3	68.4	71.5	74.2	75.0	75.5												
14-year	56.1	58.7	64.5	67.5	70.3	73.6	74.1													
15-year	54.8	57.8	63.6	65.9	69.6	72.8														
16-year	53.7	56.5	62.3	64.9	68.4															
17-year	52.5	55.5	60.9	64.4																
18-year	51.7	54.7	59.9																	
19-year	50.8	53.9																		
20-year	50.1																			

^a Survival rates are relative rates expressed as percents.

^b Rates are from the SEER 9 areas (San Francisco, Connecticut, Detroit, Hawaii, Iowa, New Mexico, Seattle, Utah, and Atlanta).

Table IV-14
BREAST CANCER (Invasive)

Percent Diagnosed With Cancer In 10, 20 and 30 Years and In Remaining Lifetime,
 Given Cancer Free At Current Age By Race and Sex

Lifetime Risk (Percent) of Being Diagnosed (17 SEER Areas) With Cancer and
 Lifetime Risk (Percent) of Dying (Total U.S.) From Cancer

2001-2003

Race/ Ethnicity	Current Age	Males				Females			
		+10 yrs	+20 yrs	+30 yrs	Eventually	+10 yrs	+20 yrs	+30 yrs	Eventually
All Races	0	0.00	0.00	0.00	0.12	0.00	0.00	0.06	12.67
	10	0.00	0.00	0.00	0.12	0.00	0.06	0.48	12.81
	20	0.00	0.00	0.01	0.12	0.05	0.48	1.90	12.84
	30	0.00	0.01	0.03	0.12	0.43	1.85	4.36	12.86
	40	0.01	0.03	0.06	0.12	1.44	3.98	7.27	12.58
	50	0.02	0.05	0.09	0.12	2.63	6.03	9.26	11.52
White	0	0.00	0.00	0.00	0.12	0.00	0.00	0.05	13.25
	10	0.00	0.00	0.00	0.12	0.00	0.06	0.48	13.38
	20	0.00	0.00	0.01	0.12	0.05	0.48	1.92	13.41
	30	0.00	0.01	0.03	0.12	0.43	1.88	4.48	13.42
	40	0.01	0.02	0.06	0.12	1.47	4.10	7.59	13.15
	50	0.02	0.05	0.09	0.12	2.72	6.33	9.74	12.06
Black	0	0.00	0.00	0.00	0.14	0.00	0.00	0.07	9.98
	10	0.00	0.00	0.00	0.15	0.00	0.07	0.53	10.20
	20	0.00	0.00	0.01	0.15	0.07	0.53	1.87	10.23
	30	0.00	0.01	0.04	0.15	0.46	1.81	4.02	10.24
	40	0.01	0.04	0.08	0.16	1.37	3.63	6.20	9.98
	50	0.03	0.07	0.12	0.15	2.38	5.09	7.45	9.08
Asian/ Pacific Islander	0	0.00	0.00	0.00	0.08	0.00	0.00	0.04	9.34
	10	0.00	0.00	0.00	0.08	0.00	0.04	0.44	9.41
	20	0.00	0.00	0.01	0.08	0.04	0.44	1.70	9.43
	30	0.00	0.00	0.02	0.08	0.40	1.66	3.62	9.42
	40	0.00	0.02	0.04	0.08	1.28	3.25	5.45	9.09
	50	0.02	0.03	0.05	0.07	2.02	4.27	6.32	7.99
Hispanic ^a	0	0.00	0.00	0.00	0.06	0.00	0.00	0.05	9.23
	10	0.00	0.00	0.00	0.06	0.00	0.05	0.38	9.33
	20	0.00	0.00	0.00	0.06	0.05	0.38	1.47	9.35
	30	0.00	0.00	0.01	0.06	0.33	1.43	3.21	9.34
	40	0.00	0.01	0.03	0.06	1.11	2.91	5.12	9.09
	50	0.01	0.03	0.04	0.06	1.84	4.11	6.32	8.18
60	0.02	0.03	0.05	0.06	2.38	4.71	6.12	6.67	

Race/Ethnicity	Lifetime Risk of Developing		Lifetime Risk of Dying	
	Males	Females	Males	Females
All Races	0.12%	12.67%	0.03%	2.92%
White	0.12%	13.25%	0.03%	2.91%
Black	0.14%	9.98%	0.04%	3.27%
Asian/Pacific Islander	0.08%	9.34%	0.01%	1.69%
Hispanic ^a	0.06%	9.23%	0.02%	2.06%

Devcan Version 6.1.0, April 2006, National Cancer Institute (<http://srab.cancer.gov/devcan/>).

Source: Incidence data are from the SEER 17 areas (San Francisco, Connecticut, Detroit, Hawaii, Iowa, New Mexico, Seattle, Utah, Atlanta, San Jose-Monterey, Los Angeles, Alaska Native Registry, Rural Georgia, California excluding SF/SJM/LA, Kentucky, Louisiana and New Jersey). Mortality data are from the NCHS public use data file for the total US.

^a Hispanic is not mutually exclusive from Whites, Blacks, Asian/Pacific Islanders, and American Indians/Alaska Natives. Underlying incidence data for Hispanics are based on NHIA and exclude cases from Hawaii, Seattle, Alaska Native Registry and Kentucky. Underlying mortality data for Hispanics exclude deaths from Minnesota, New Hampshire and North Dakota.

Table IV-15
FEMALE BREAST CANCER (Invasive)

SEER INCIDENCE AND U.S. MORTALITY
AGE-ADJUSTED RATES AND TRENDS^a
 By Race/Ethnicity

SEER Incidence

RACE/ETHNICITY	Rate 2000-2003 ^b	Trend 1994-2003 ^c
	Rate per 100,000 persons	APC (%)
	Females	Females
All Races	129.1	-0.3
White	134.0	-0.2
White Hispanic ^d	90.8	-0.5
White Non-Hispanic ^d	140.6	-0.2
Black	118.0	-0.4
Asian/Pacific Islander	88.6	0.8
Amer Ind/Alaska Nat ^e	74.4	-2.9
Hispanic ^d	89.1	-0.4

U.S. Mortality^f

RACE/ETHNICITY	Rate 2000-2003	Trend 1994-2003
	Rate per 100,000 persons	APC (%)
	Females	Females
All Races	25.8	-2.4*
White	25.3	-2.5*
White Hispanic ^d	16.9	-2.1*
White Non-Hispanic ^d	25.8	-2.4*
Black	34.3	-1.4*
Asian/Pacific Islander	12.6	-0.9
Amer Ind/Alaska Nat	13.4	-1.9
Hispanic ^d	16.2	-2.2*

- The APC is the Annual Percent Change over the time interval.
- Statistic not shown. Rate based on less than 16 cases for the time interval. Trend based on less than 10 cases for at least one year within the time interval.
- ^a Rates are age-adjusted to the 2000 US Std Population (19 age groups - Census P25-1130). Trends are based on rates age-adjusted to the 2000 US Std Population (19 age groups - Census P25-1130).
- ^b Incidence data used in calculating the rates are from the 17 SEER areas (San Francisco, Connecticut, Detroit, Hawaii, Iowa, New Mexico, Seattle, Utah, Atlanta, San Jose-Monterey, Los Angeles, Alaska Native Registry, Rural Georgia, California excluding SF/SJM/LA, Kentucky, Louisiana and New Jersey).
- ^c Incidence data used in calculating the trends are from the 13 SEER areas (San Francisco, Connecticut, Detroit, Hawaii, Iowa, New Mexico, Seattle, Utah, Atlanta, San Jose-Monterey, Los Angeles, Alaska Native Registry and Rural Georgia).
- ^d Hispanic and Non-Hispanic are not mutually exclusive from Whites, Blacks, Asian/Pacific Islanders, and American Indians/Alaska Natives. Incidence data for Hispanics and Non-Hispanics are based on NHIA and exclude cases from Hawaii, Seattle, Alaska Native Registry and Kentucky. The 2000-2003 Hispanic and Non-Hispanic death rates exclude deaths from Minnesota, New Hampshire and North Dakota. The 1994-2003 Hispanic and Non-Hispanic mortality trends exclude deaths from Maine, Minnesota, New Hampshire, North Dakota, and Oklahoma.
- ^e Incidence data for American Indians/Alaska Natives include cases from Connecticut, Detroit, Iowa, New Mexico, Seattle, Utah, Atlanta, and the Alaska Native Registry. Incidence rates are for diagnosis years 1999-2002. Incidence trends are for diagnosis years 1994-2002.
- ^f Mortality data are analyzed from a public use file provided by the National Center for Health Statistics (NCHS).
- * The APC is significantly different from zero (p<.05).

Table IV-16
FEMALE BREAST CANCER (In Situ)

SEER INCIDENCE
AGE-ADJUSTED RATES AND TRENDS^a
 By Race/Ethnicity

RACE/ETHNICITY	Rate 2000-2003 ^b	Trend 1994-2003 ^c
	Rate per 100,000 persons	APC (%)
	Females	Females
All Races	29.4	4.0*
White	30.1	4.0*
White Hispanic ^d	17.8	4.1*
White Non-Hispanic ^d	32.7	4.3*
Black	25.0	3.7*
Asian/Pacific Islander	25.5	6.3*
Amer Ind/Alaska Nat ^e	18.1	-
Hispanic ^d	17.6	4.0*

- The APC is the Annual Percent Change over the time interval.
 - Statistic not shown. Rate based on less than 16 cases for the time interval. Trend based on less than 10 cases for at least one year within the time interval.
 a Rates are age-adjusted to the 2000 US Std Population (19 age groups - Census P25-1130). Trends are based on rates age-adjusted to the 2000 US Std Population (19 age groups - Census P25-1130).
 b Incidence data used in calculating the rates are from the 17 SEER areas (San Francisco, Connecticut, Detroit, Hawaii, Iowa, New Mexico, Seattle, Utah, Atlanta, San Jose-Monterey, Los Angeles, Alaska Native Registry, Rural Georgia, California excluding SF/SJM/LA, Kentucky, Louisiana and New Jersey).
 c Incidence data used in calculating the trends are from the 13 SEER areas (San Francisco, Connecticut, Detroit, Hawaii, Iowa, New Mexico, Seattle, Utah, Atlanta, San Jose-Monterey, Los Angeles, Alaska Native Registry and Rural Georgia).
 d Hispanic and Non-Hispanic are not mutually exclusive from Whites, Blacks, Asian/Pacific Islanders, and American Indians/Alaska Natives. Incidence data for Hispanics and Non-Hispanics are based on NHIA and exclude cases from Hawaii, Seattle, Alaska Native Registry and Kentucky.
 e Incidence data for American Indians/Alaska Natives include cases from Connecticut, Detroit, Iowa, New Mexico, Seattle, Utah, Atlanta, and the Alaska Native Registry. Incidence rates are for diagnosis years 1999-2002. Incidence trends are for diagnosis years 1994-2002.
 * The APC is significantly different from zero (p<.05).

Table IV-17
FEMALE BREAST CANCER (Invasive)
AGE-ADJUSTED SEER INCIDENCE RATES^a
 By Registry, Race/Ethnicity and Age

	All Races			Whites	Blacks	Asian/Pacific Islanders	Hispanics ^b
	All Ages	Ages <50	Ages 50+	All Ages	All Ages	All Ages	All Ages
<u>SEER INCIDENCE RATES^a, 2000-2003</u>							
REGISTRY							
17 SEER Areas ^c	129.1	41.7	358.1	134.0	118.0	88.6	89.1
13 SEER Areas ^c	129.7	41.8	359.7	135.9	118.0	93.0	86.3
11 SEER Areas ^c	129.7	41.8	359.9	136.0	118.3	93.0	86.3
9 SEER Areas ^c	132.6	42.7	367.9	138.3	117.6	95.7	94.1
San Francisco-Oakland	134.5	42.8	374.8	150.3	116.0	87.4	98.8
Connecticut	138.7	48.4	375.2	141.2	113.0	77.3	109.2
Metropolitan Detroit	131.8	43.2	363.9	136.6	121.4	52.4	92.7
Hawaii	125.2	44.1	337.6	145.3	94.1	118.1	-
Iowa	127.1	40.7	353.4	126.0	112.8	64.9	88.4
New Mexico	112.2	36.5	310.5	118.3	74.9	77.6	85.9
Seattle-Puget Sound	148.2	43.8	421.8	155.2	109.1	82.0	-
Utah	116.8	34.6	331.9	118.5	99.0	73.0	100.5
Metropolitan Atlanta	132.9	43.7	366.5	141.7	119.0	60.4	99.4
San Jose-Monterey	127.5	41.5	352.8	137.8	102.3	85.1	83.2
Los Angeles	121.2	39.2	336.1	127.6	120.9	89.9	81.9
Rural Georgia	106.2	40.3	278.8	111.1	98.9	-	-
California exclud. SF/SJM/LA	130.2	39.3	368.2	135.2	113.9	80.0	91.0
Kentucky	123.3	41.3	337.9	122.3	131.7	67.3	-
Louisiana	121.6	40.5	334.2	121.8	121.8	60.7	85.9
New Jersey	132.1	46.8	355.4	136.2	113.8	76.7	97.9

^a Rates are per 100,000 and are age-adjusted to the 2000 US Std Population (19 age groups - Census P25-1130)

^b Hispanic is not mutually exclusive from Whites, Blacks, Asian/Pacific Islanders, and American Indians/Alaska Natives. Incidence data for Hispanics are based on NHIA and exclude cases from Hawaii, Seattle, Alaska Native Registry and Kentucky.

^c The SEER 9 areas are San Francisco, Connecticut, Detroit, Hawaii, Iowa, New Mexico, Seattle, Utah and Atlanta.

The SEER 11 areas comprise the SEER 9 areas plus San Jose-Monterey and Los Angeles.

The SEER 13 areas comprise the SEER 11 areas plus the Alaska Native Registry and Rural Georgia.

The SEER 17 areas comprise the SEER 13 areas plus California excluding SF/SJM/LA, Kentucky, Louisiana and New Jersey

- Statistic not shown. Rate based on less than 16 cases for the time interval.

Table IV-18
FEMALE BREAST CANCER (Invasive)
AGE-ADJUSTED SEER DEATH RATES^a
 By Registry, Race/Ethnicity and Age

	<u>All Races</u>			<u>Whites</u>	<u>Blacks</u>	<u>Asian/Pacific Islanders</u>	<u>Hispanics^b</u>
	<u>All Ages</u>	<u>Ages <50</u>	<u>Ages 50+</u>	<u>All Ages</u>	<u>All Ages</u>	<u>All Ages</u>	<u>All Ages</u>
<u>SEER DEATH RATES^a, 2000-2003</u>							
REGISTRY							
17 SEER Areas ^c	25.7	5.6	78.1	25.7	35.1	13.9	15.8
13 SEER Areas ^c	24.3	5.4	74.0	24.6	33.3	14.3	15.7
11 SEER Areas ^c	24.4	5.4	74.1	24.6	33.5	14.3	15.8
9 SEER Areas ^c	24.9	5.3	76.0	24.9	33.9	14.2	16.4
San Francisco-Oakland	25.1	5.6	76.2	27.0	34.7	13.8	15.0
Connecticut	25.3	5.0	78.5	25.2	28.6	-	13.5
Metropolitan Detroit	28.7	6.4	87.2	26.8	35.9	12.1	12.8
Hawaii	17.7	4.5	52.4	23.4	-	15.8	31.4
Iowa	23.9	4.7	74.1	23.8	38.6	-	-
New Mexico	22.3	5.9	65.2	23.0	31.0	-	19.1
Seattle-Puget Sound	24.0	4.6	74.7	24.4	32.2	15.2	19.9
Utah	23.2	4.6	72.0	23.5	-	-	9.5
Metropolitan Atlanta	26.6	6.0	80.7	24.3	33.6	-	-
San Jose-Monterey	21.4	4.8	64.9	23.0	27.7	14.1	13.0
Los Angeles	23.4	5.7	70.0	23.9	32.8	14.7	15.6
Rural Georgia	21.1	-	60.9	18.7	23.6	-	-
California exclud. SF/SJM/LA	25.1	5.7	75.9	25.8	34.0	13.6	16.0
Kentucky	26.6	5.8	81.1	26.0	36.9	-	-
Louisiana	30.4	7.5	90.3	26.5	40.5	-	14.9
New Jersey	29.1	5.5	90.9	29.0	34.9	10.9	15.1
Total U.S.	25.8	5.7	78.5	25.3	34.3	12.6	16.2

^a NCHS public use data file for the total US. Rates are per 100,000 and are age-adjusted to the 2000 US Std Population (19 age groups - Census P25-1130).

^b Hispanic is not mutually exclusive from Whites, Blacks, Asian/Pacific Islanders, and American Indians/Alaska Natives. The 2000-2003 Hispanic death rates do not include deaths from Minnesota, New Hampshire and North Dakota.

^c The SEER 9 areas are San Francisco, Connecticut, Detroit, Hawaii, Iowa, New Mexico, Seattle, Utah and Atlanta.

The SEER 11 areas comprise the SEER 9 areas plus San Jose-Monterey and Los Angeles.

The SEER 13 areas comprise the SEER 11 areas plus the Alaska Native Registry and Rural Georgia.

The SEER 17 areas comprise the SEER 13 areas plus California excluding SF/SJM/LA, Kentucky, Louisiana and New Jersey

- Statistic not shown. Rate based on less than 16 cases for the time interval.

Table IV-19
FEMALE BREAST CANCER (In Situ)

AGE-ADJUSTED SEER INCIDENCE RATES^a
 By Registry, Race/Ethnicity and Age

	<u>All Races</u>			<u>Whites</u>	<u>Blacks</u>	<u>Asian/Pacific Islanders</u>	<u>Hispanics^b</u>
	<u>All Ages</u>	<u>Ages <50</u>	<u>Ages 50+</u>	<u>All Ages</u>	<u>All Ages</u>	<u>All Ages</u>	<u>All Ages</u>
<u>SEER INCIDENCE RATES^a, 2000-2003</u>							
REGISTRY							
17 SEER Areas ^c	29.4	10.5	78.8	30.1	25.0	25.5	17.6
13 SEER Areas ^c	30.9	10.9	83.3	31.8	27.6	27.2	17.0
11 SEER Areas ^c	30.9	10.8	83.3	31.8	27.7	27.2	17.0
9 SEER Areas ^c	33.0	11.7	88.7	33.7	29.7	30.6	18.1
San Francisco-Oakland	31.1	11.1	83.3	32.3	21.8	29.9	20.0
Connecticut	42.8	17.4	109.3	43.9	30.5	25.8	32.8
Metropolitan Detroit	39.2	14.7	103.5	40.7	35.8	23.6	22.2
Hawaii	35.7	12.3	96.9	32.8	-	36.4	-
Iowa	25.3	9.1	67.9	25.1	24.6	-	-
New Mexico	19.8	5.8	56.5	21.3	-	-	12.1
Seattle-Puget Sound	34.5	10.8	96.6	35.3	32.9	27.4	-
Utah	24.0	7.3	67.5	24.2	-	19.5	15.4
Metropolitan Atlanta	33.2	11.0	91.3	37.4	26.4	13.8	19.9
San Jose-Monterey	27.8	9.3	76.3	28.7	16.0	23.5	18.8
Los Angeles	25.1	8.7	67.9	26.0	23.0	21.8	16.1
Rural Georgia	26.5	10.3	68.8	30.0	23.6	-	-
California exclud. SF/SJM/LA	26.7	8.6	73.9	27.2	22.8	20.9	17.0
Kentucky	23.4	8.3	62.7	23.2	22.6	31.7	-
Louisiana	21.3	7.6	57.2	22.4	19.1	-	11.0
New Jersey	35.0	14.8	88.0	36.8	24.7	23.4	23.6

^a Rates are per 100,000 and are age-adjusted to the 2000 US Std Population (19 age groups - Census P25-1130)

^b Hispanic is not mutually exclusive from Whites, Blacks, Asian/Pacific Islanders, and American Indians/Alaska Natives.

Incidence data for Hispanics are based on NHIA and exclude cases from Hawaii, Seattle, Alaska Native Registry and Kentucky.

^c The SEER 9 areas are San Francisco, Connecticut, Detroit, Hawaii, Iowa, New Mexico, Seattle, Utah and Atlanta.

The SEER 11 areas comprise the SEER 9 areas plus San Jose-Monterey and Los Angeles.

The SEER 13 areas comprise the SEER 11 areas plus the Alaska Native Registry and Rural Georgia.

The SEER 17 areas comprise the SEER 13 areas plus California excluding SF/SJM/LA, Kentucky, Louisiana and New Jersey

- Statistic not shown. Rate based on less than 16 cases for the time interval.

Table IV-20
FEMALE BREAST CANCER (Invasive)

AVERAGE ANNUAL AGE-ADJUSTED CANCER DEATH^a RATES BY STATE, ALL RACES, 2000-2003

Females

State	Rate	SE	Rank	PD	State	Rate	SE	Rank	PD
TOTAL U.S.	25.8	0.06							
High Five States									
District of Columbia	33.2 ^{bc}	1.61	(01)	28.7					
Louisiana	30.4 ^{bc}	0.56	(02)	17.8					
New Jersey	29.1 ^{bc}	0.38	(03)	12.8					
Ohio	28.3 ^c	0.32	(04)	9.7					
Mississippi	27.9	0.67	(05)	8.1					
Low Five States									
Utah	23.2 ^b	0.80	(47)	-10.1					
Colorado	23.0 ^{bc}	0.52	(48)	-10.9					
Wyoming	22.9 ^b	1.47	(49)	-11.2					
New Mexico	22.3 ^{bc}	0.76	(50)	-13.6					
Hawaii	17.7 ^{bc}	0.80	(51)	-31.4					
Alabama	26.5	0.50	(16)	2.7	Montana	23.9	1.05	(42)	-7.4
Alaska	23.5	1.75	(46)	-8.9	Nebraska	23.7	0.78	(44)	-8.1
Arizona	23.8 ^c	0.46	(43)	-7.8	Nevada	26.2	0.80	(19)	1.6
Arkansas	24.2	0.62	(37)	-6.2	New Hampshire	25.1	0.94	(29)	-2.7
California	24.4 ^c	0.19	(34)	-5.4	New Jersey	29.1 ^{bc}	0.38	(03)	12.8
Colorado	23.0 ^{bc}	0.52	(48)	-10.9	New Mexico	22.3 ^{bc}	0.76	(50)	-13.6
Connecticut	25.3	0.55	(28)	-1.9	New York	26.7	0.24	(12)	3.5
Delaware	26.6	1.20	(15)	3.1	North Carolina	25.4	0.37	(27)	-1.6
District of Columbia	33.2 ^{bc}	1.61	(01)	28.7	North Dakota	24.5	1.27	(33)	-5.0
Florida	23.5 ^c	0.24	(45)	-8.9	Ohio	28.3 ^c	0.32	(04)	9.7
Georgia	25.5	0.40	(24)	-1.2	Oklahoma	26.4	0.58	(18)	2.3
Hawaii	17.7 ^{bc}	0.80	(51)	-31.4	Oregon	25.5	0.57	(26)	-1.2
Idaho	24.2	0.95	(38)	-6.2	Pennsylvania	27.6 ^c	0.29	(08)	7.0
Illinois	27.3 ^c	0.32	(09)	5.8	Rhode Island	24.6	0.97	(32)	-4.7
Indiana	26.7	0.44	(11)	3.5	South Carolina	26.6	0.54	(13)	3.1
Iowa	23.9	0.57	(41)	-7.4	South Dakota	24.2	1.18	(39)	-6.2
Kansas	25.9	0.65	(23)	0.4	Tennessee	26.5	0.45	(17)	2.7
Kentucky	26.6	0.54	(14)	3.1	Texas	24.8 ^c	0.25	(30)	-3.9
Louisiana	30.4 ^{bc}	0.56	(02)	17.8	Utah	23.2 ^b	0.80	(47)	-10.1
Maine	24.3	0.86	(35)	-5.8	Vermont	26.2	1.34	(20)	1.6
Maryland	27.8 ^c	0.48	(06)	7.8	Virginia	27.7 ^c	0.42	(07)	7.4
Massachusetts	26.0	0.41	(22)	0.8	Washington	24.0 ^c	0.44	(40)	-7.0
Michigan	26.2	0.34	(21)	1.6	West Virginia	25.5	0.74	(25)	-1.2
Minnesota	24.2	0.47	(36)	-6.2	Wisconsin	24.7	0.45	(31)	-4.3
Mississippi	27.9	0.67	(05)	8.1	Wyoming	22.9 ^b	1.47	(49)	-11.2
Missouri	26.9	0.45	(10)	4.3					

^a NCHS public use data file. Rates are per 100,000 and are age-adjusted to the 2000 US Std Population (19 age groups - Census P25-1130).

^b Absolute percent difference between state rate and total U.S. rate is 10% or more.

^c Difference between state rate and total U.S. rate is statistically significant ($p \leq .0002$).

SE Standard error of the rate.

PD Percent difference between state rate and total U.S. rate.

Table IV-21
BREAST CANCER (Invasive)

Estimated United States Cancer Prevalence Counts^a on January 1, 2003
By Race/Ethnicity, Sex and Years Since Diagnosis

Years Since Diagnosis	0 to <5	5 to <10	10 to <15	15 to <20	20 to <25	0 to <13 ^e	0 to <28 ^e	>=28 ^g	Complete ^h
<u>Race/Sex</u>									
All Races ^b	827,910	579,192	402,323	243,275	134,102	1,667,841	2,248,621	120,415	2,369,036
Males	5,301	2,924	1,765	1,029	649	9,423	11,891	350	12,241
Females	822,609	576,268	400,558	242,246	133,453	1,658,418	2,236,730	120,065	2,356,795
White ^b	727,023	516,929	364,149	222,225	122,488	1,479,005	2,009,600	107,266	2,116,866
Males	4,530	2,579	1,538	945	600	8,153	10,414	234 ⁱ	10,648
Females	722,493	514,350	362,611	221,280	121,888	1,470,852	1,999,186	107,032	2,106,218
Black ^b	69,349	44,140	27,447	15,249	8,547	131,694	168,338	+	+
Males	615	244	199	72	45	995	1,176	+	+
Females	68,734	43,896	27,248	15,177	8,502	130,699	167,162	8,253	175,415
Asian/Pacific Islander ^c	21,783	12,976	+	+	+	40,018	+	+	+
Males	70	69	+	+	+	158	+	+	+
Females	21,713	12,907	+	+	+	39,860	+	+	+
Hispanic ^d	38,515	23,206	+	+	+	72,065	+	+	+
Males	146	54	+	+	+	225	+	+	+
Females	38,369	23,152	+	+	+	71,840	+	+	+

Estimated prevalence percent^a on January 1, 2003, of the SEER 11 population diagnosed in the previous 10 years
By Age at Prevalence, Race/Ethnicity and Sex

Age at Prevalence	Age Specific (Crude)										Age-Adjusted ^f
	All Ages	0-9	10-19	20-29	30-39	40-49	50-59	60-69	70-79	80+	All Ages
<u>Race/Sex</u>											
All Races ^c	0.4362%	-	0.0002%	0.0047%	0.0763%	0.3791%	0.9425%	1.4571%	1.8827%	2.0176%	0.4597%
Males	0.0051%	-	-	-	0.0006%	0.0023%	0.0089%	0.0214%	0.0318%	0.0404%	0.0063%
Females	0.8576%	-	0.0003%	0.0096%	0.1543%	0.7519%	1.8276%	2.7377%	3.0921%	3.0921%	0.8390%
White ^c	0.4792%	-	0.0002%	0.0044%	0.0748%	0.3861%	0.9803%	1.5544%	2.0198%	2.1429%	0.4837%
Males	0.0054%	-	-	-	0.0005%	0.0022%	0.0088%	0.0209%	0.0339%	0.0421%	0.0063%
Females	0.9507%	-	0.0004%	0.0092%	0.1544%	0.7784%	1.9283%	2.9576%	3.5424%	3.2685%	0.8912%
Black ^c	0.2983%	-	-	0.0060%	0.0912%	0.3584%	0.8359%	1.2034%	1.5611%	1.6053%	0.3974%
Males	0.0053%	-	-	-	-	0.0038%	0.0147%	0.0346%	0.0373%	0.0411%	0.0086%
Females	0.5637%	-	-	0.0115%	0.1713%	0.6691%	1.5167%	2.1197%	2.5625%	2.3498%	0.6852%
Asian/Pacific Islander ^c	0.3044%	-	-	0.0050%	0.0707%	0.3514%	0.7668%	1.0047%	1.1252%	1.0712%	0.3263%
Males	0.0026%	-	-	-	-	0.0020%	0.0032%	0.0127%	0.0129%	0.0259%	0.0033%
Females	0.5870%	-	-	0.0100%	0.1370%	0.6669%	1.4352%	1.8309%	1.9309%	1.7760%	0.5909%
Hispanic ^d	0.1603%	-	-	0.0033%	0.0492%	0.2684%	0.6170%	0.9176%	1.1655%	1.2187%	0.2959%
Males	0.0010%	-	-	-	-	0.0014%	0.0026%	0.0082%	0.0108%	0.0162%	0.0024%
Females	0.3276%	-	-	0.0072%	0.1049%	0.5425%	1.1839%	1.6683%	1.9897%	1.8948%	0.5367%

- ^a US 2003 cancer prevalence counts are based on 2003 cancer prevalence proportions from the SEER registries and 1/1/2003 US population estimates based on the average of 2002 and 2003 population estimates from the US Bureau of the Census. Prevalence was calculated using the First Malignant Primary Only for a person.
- ^{b c d} Statistics based on (b) SEER 9 Areas (c) SEER 11 Areas and Rural Georgia (d) NHIA for Hispanic for SEER 11 Areas and Rural Georgia excluding Hawaii and Seattle.
- ^e Maximum limited-duration prevalence: 28 years for 1975-2003 SEER 9 data; 13 years for 1990-2003 SEER 11 data (used to calculate prevalence for Hispanics and Asian Pacific Islanders).
- ^f Percentages are age-adjusted to the 2000 US standard population by 5-year age groups.
- ^{g h i} (g) Cases diagnosed more than 28 years ago were estimated using the completeness index method (Capocaccia et. al. 1997, Merrill et. al. 2000). (h) Complete prevalence is obtained by summing 0 to <28 and >=28. (i) Age-specific completeness index was approximated using empirical data from historical Connecticut tumor registry.
- Statistic not shown. Statistic based on fewer than 5 cases estimated alive in SEER for the time interval.
- + Not available.

SEER Incidence, Delay Adjusted Incidence and US Death Rates+ Female Breast Cancer, by Race

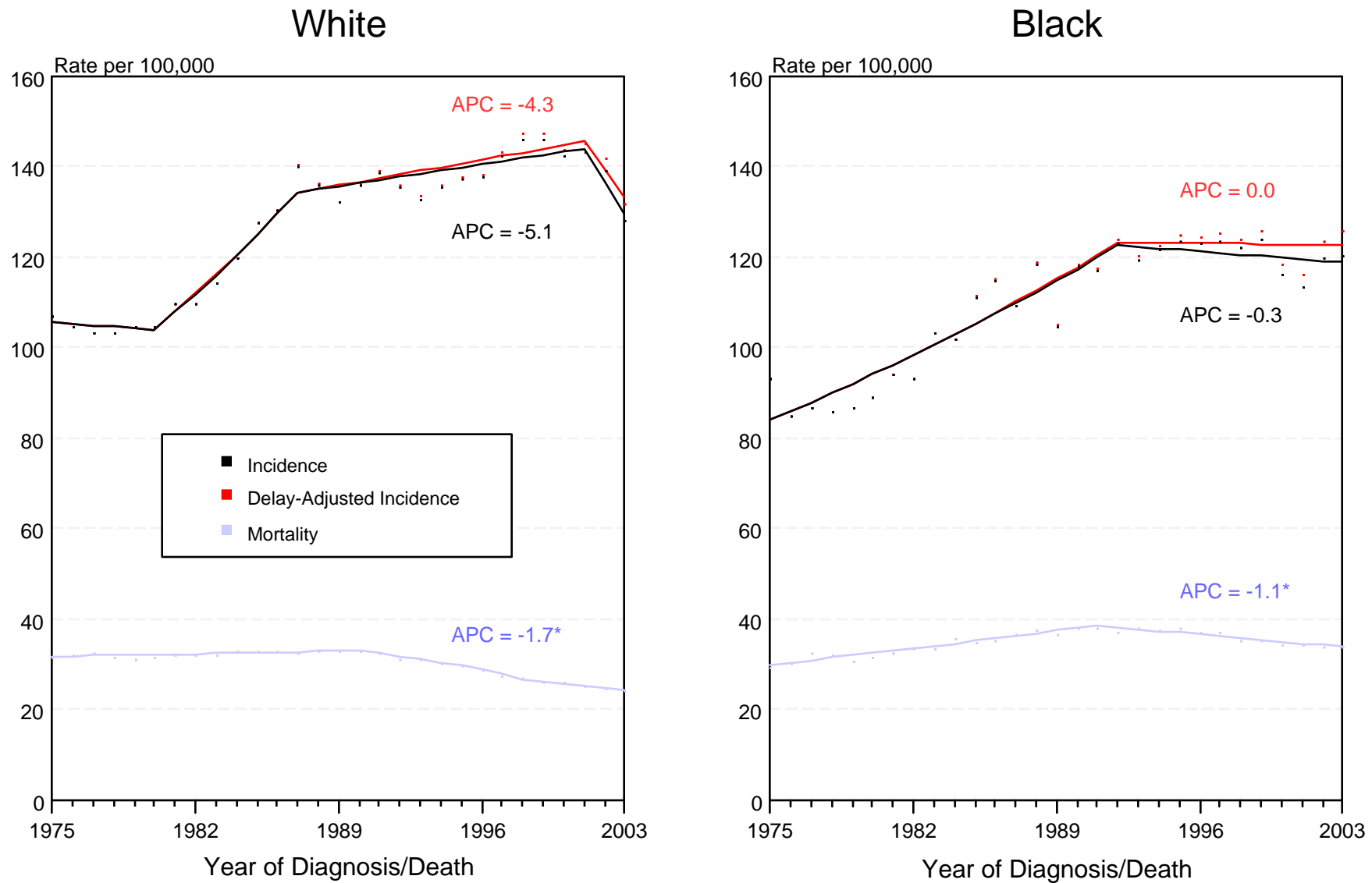


Figure IV-1

+ Source: SEER 9 areas and NCHS public use data file for the total US. Rates are age-adjusted to the 2000 US Std Population (19 age groups - Census P25-1103). Regression lines and APCs are calculated using the Joinpoint Regression Program Version 3.1, April 2006, National Cancer Institute.

The APC is the Annual Percent Change for the regression line segments. The APC shown on the graph is for the most recent trend.

* The APC is significantly different from zero ($p < 0.05$).

SEER Incidence, Delay Adjusted Incidence and US Death Rates+ Female Breast Cancer, by Age and Race

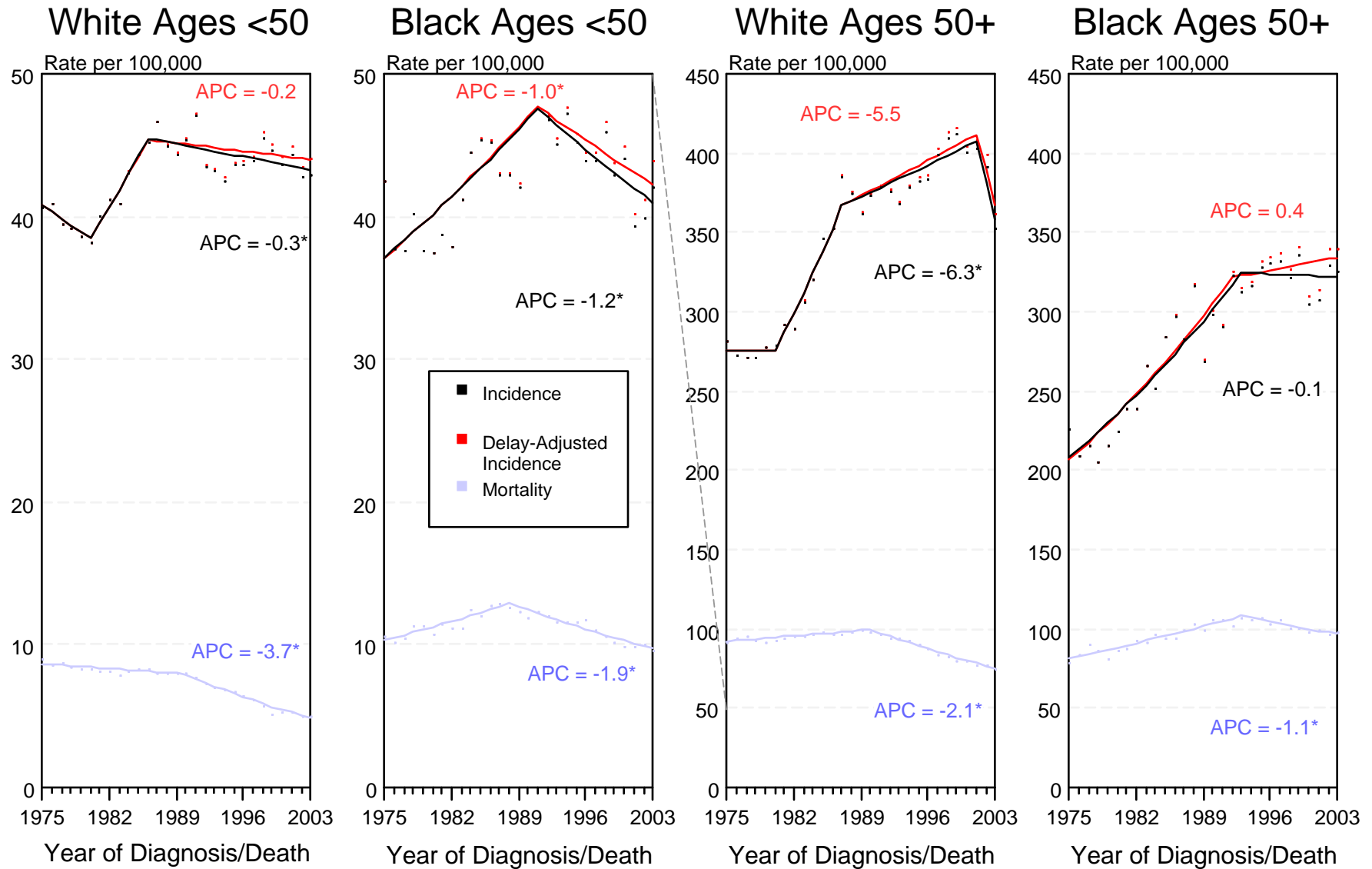


Figure IV-2

+ Source: SEER 9 areas and NCHS public use data file for the total US. Rates are age-adjusted to the 2000 US Std Population (19 age groups - Census P25-1103). Regression lines and APCs are calculated using the Joinpoint Regression Program Version 3.1, April 2006, National Cancer Institute.

The APC is the Annual Percent Change for the regression line segments. The APC shown on the graph is for the most recent trend.

* The APC is significantly different from zero ($p < 0.05$).

SEER Incidence and Delay Adjusted Incidence Rates+ Female Breast Cancer (*In Situ*), by Race

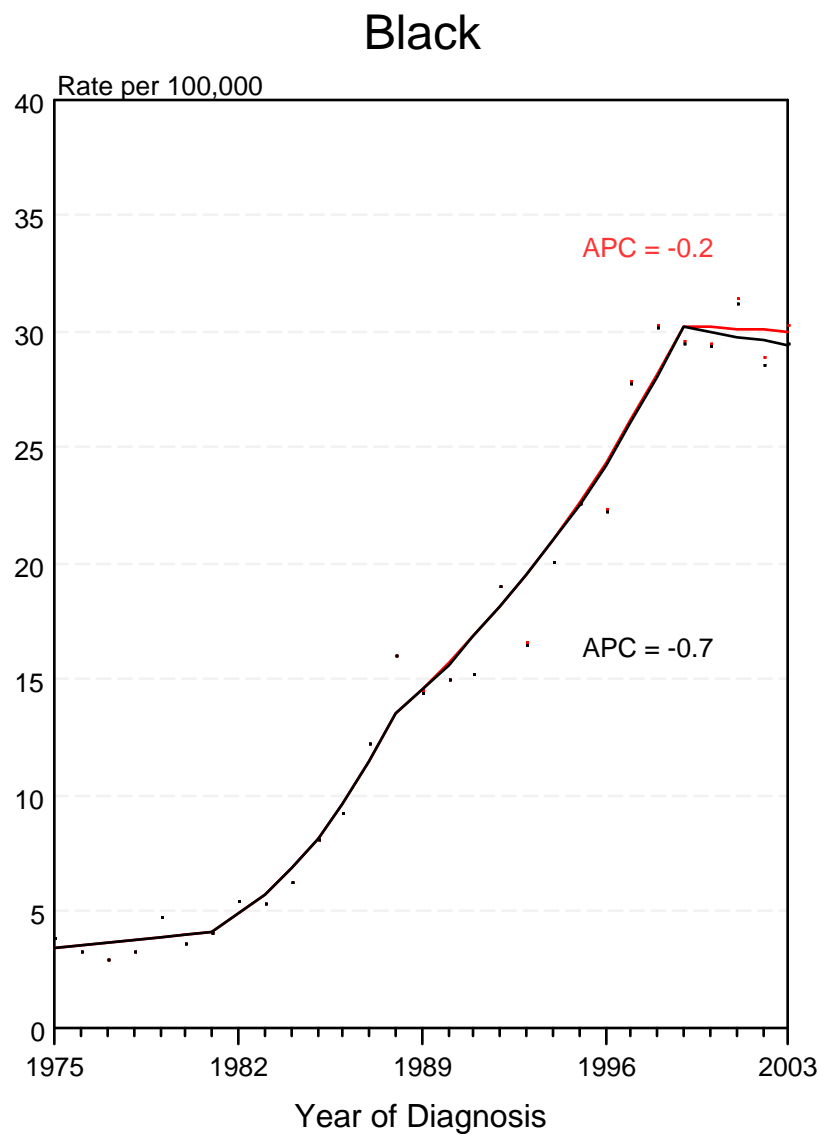
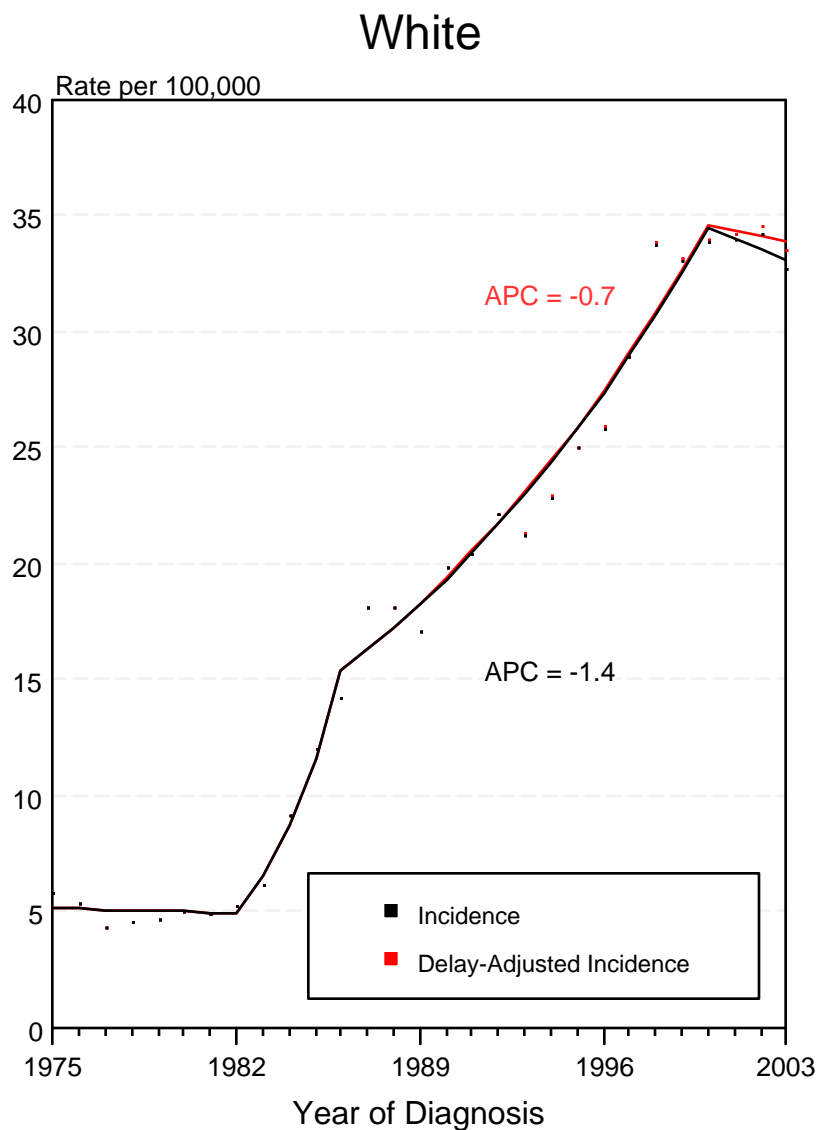


Figure IV-3

+ Source: SEER 9 areas. Rates are age-adjusted to the 2000 US Std Population (19 age groups - Census P25-1103). Regression lines and APCs are calculated using the Joinpoint Regression Program Version 3.1, April 2006, National Cancer Institute. The APC is the Annual Percent Change for the regression line segments. The APC shown on the graph is for the most recent trend.

* The APC is significantly different from zero ($p < 0.05$).

SEER Incidence and US Death Rates* Female Breast Cancer

Joinpoint Analyses for Whites and Blacks from 1975-2003
and for Asian/Pacific Islanders, American Indians/Alaska Natives and Hispanics from 1992-2003

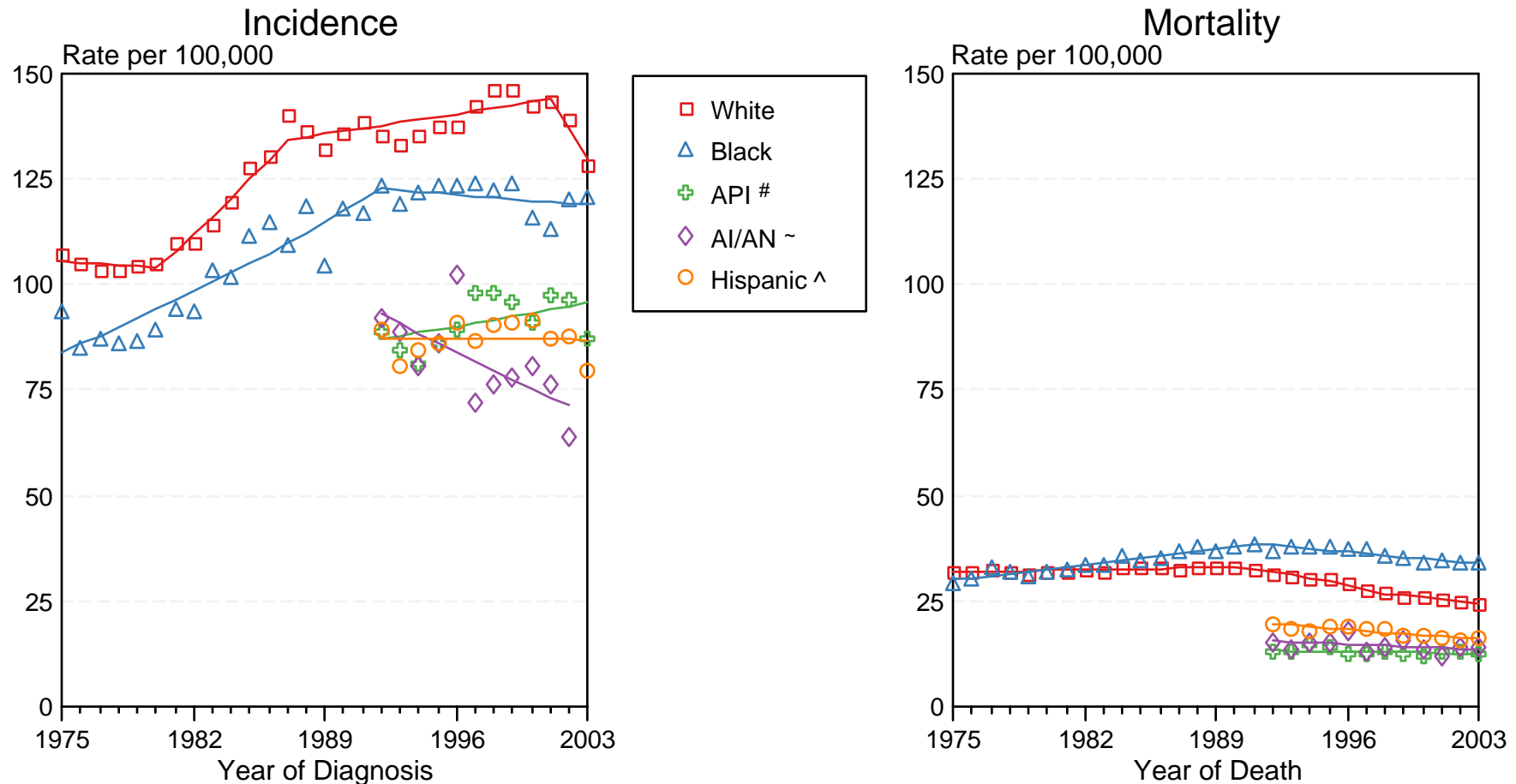


Figure IV-4

Source: Incidence data for Whites and Blacks are from the SEER 9 areas (San Francisco, Connecticut, Detroit, Hawaii, Iowa, New Mexico, Seattle, Utah, Atlanta). Incidence data for Asian/Pacific Islanders and Hispanics are from the SEER 13 Areas (SEER 9 Areas, San Jose-Monterey, Los Angeles, Alaska Native Registry and Rural Georgia). Mortality data are from NCHS public use data file for the total US.

* Rates are age-adjusted to the 2000 US Std Population (19 age groups - Census P25-1103).

Regression lines are calculated using the Joinpoint Regression Program Version 3.1, April 2006, National Cancer Institute.

API = Asian/Pacific Islander.

~ AI/AN = American Indian/Alaska Native. Incidence data for AI/AN include cases from Connecticut, Detroit, Iowa, New Mexico, Seattle, Utah, Atlanta and the Alaska Native Registry for the time period 1992-2002. Mortality data are from the entire US for the time period 1992-2003.

^ Hispanic is not mutually exclusive from Whites, Blacks, Asian/Pacific Islanders, and American Indians/Alaska Natives. Incidence data for Hispanics are based on NHIA and exclude cases from Hawaii, Seattle, and the Alaska Native Registry. Mortality data for Hispanics exclude cases from Connecticut, Maine, Maryland, Minnesota, New Hampshire, New York, North Dakota, Oklahoma, and Vermont.

Breast Cancer Incidence Rates, 1975-2003 by Age, *In Situ* vs Malignant All Races, Female

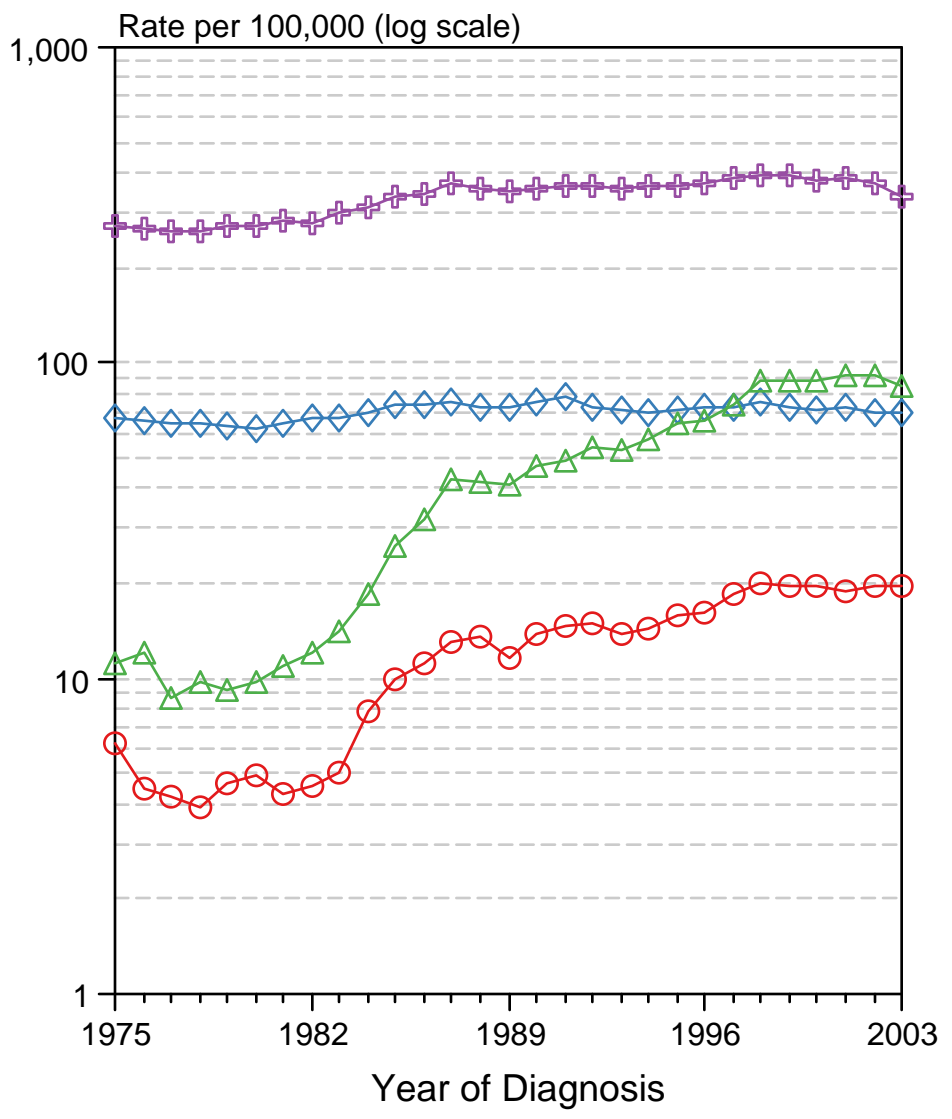
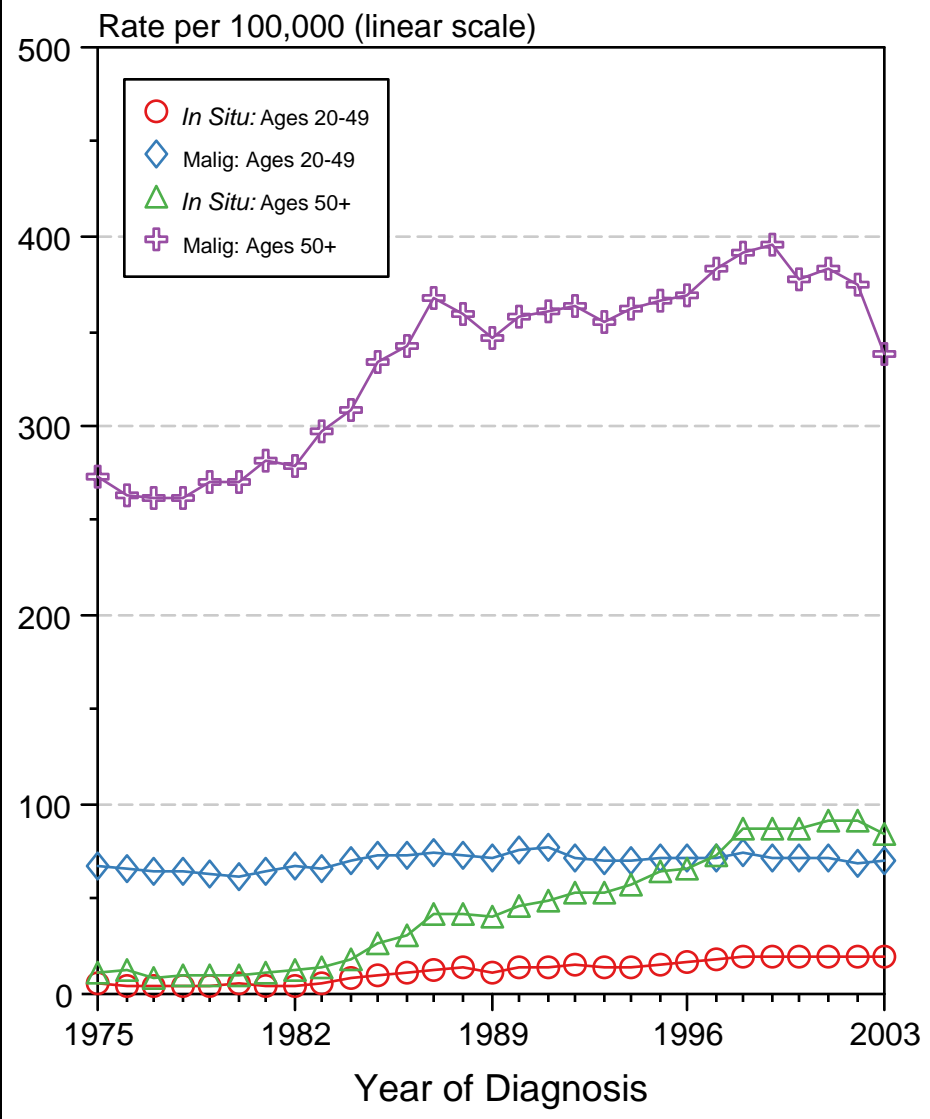


Figure IV-5

Source: SEER 9 areas. Rates are age-adjusted to the 2000 US Std Population (19 age groups - Census P25-1103).

Breast Cancer Incidence Rates, 1975-2003 by Age, *In Situ* vs Malignant White Female

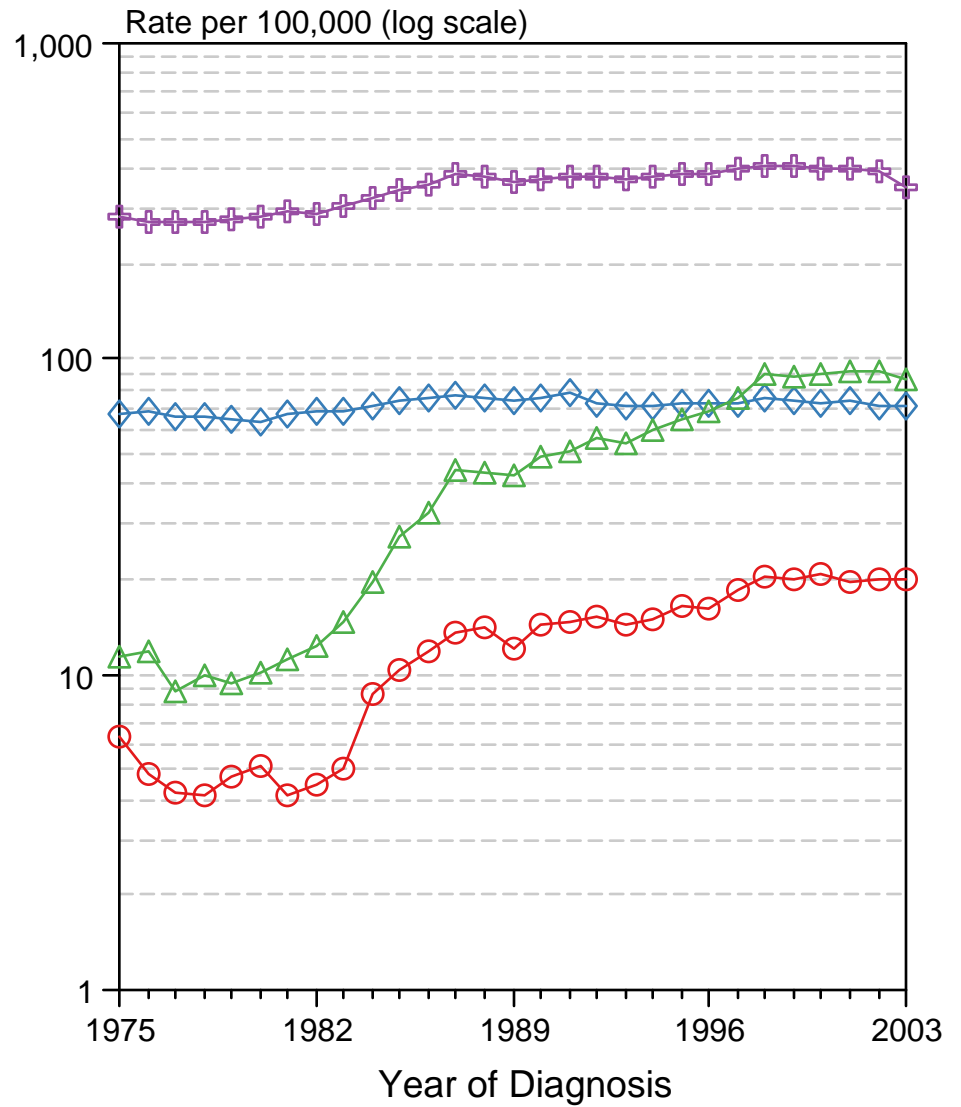
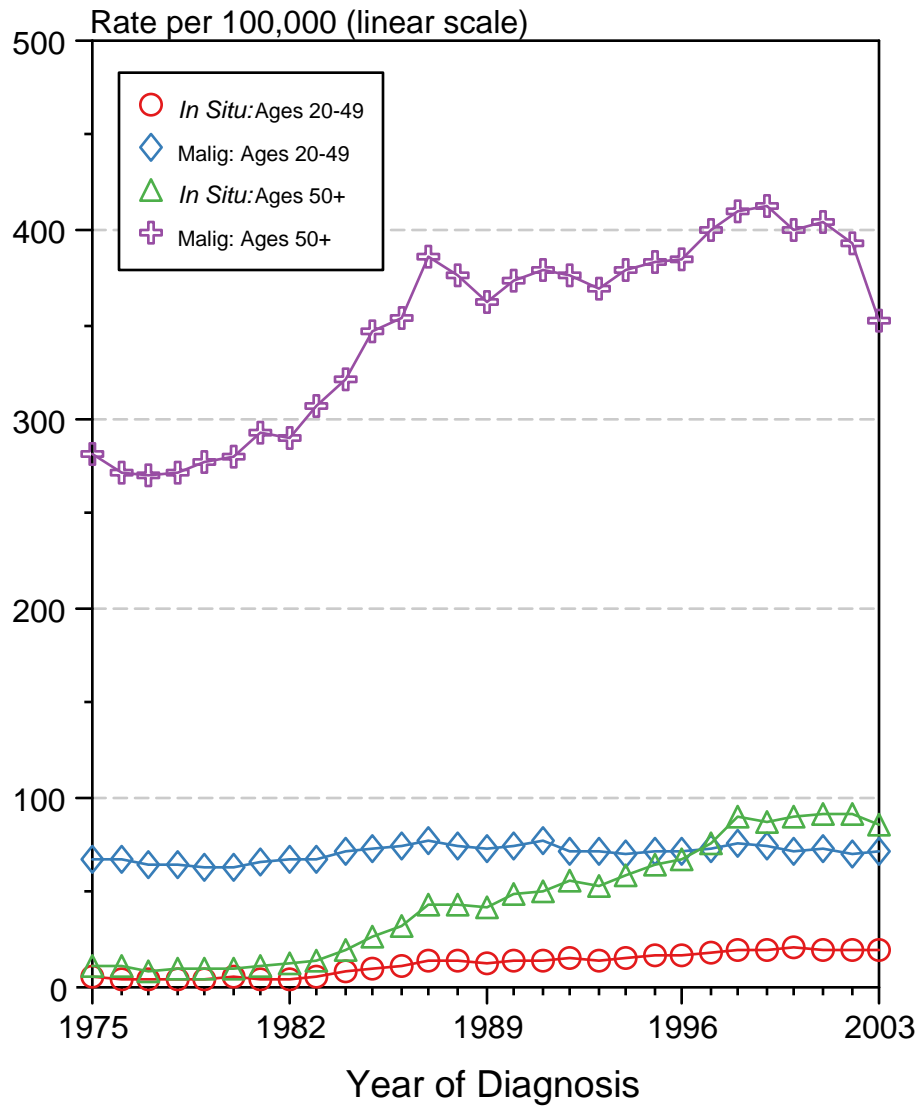


Figure IV-6

Source: SEER 9 areas. Rates are age-adjusted to the 2000 US Std Population (19 age groups - Census P25-1103).

Breast Cancer Incidence Rates, 1975-2003 by Age, *In Situ* vs Malignant Black Female

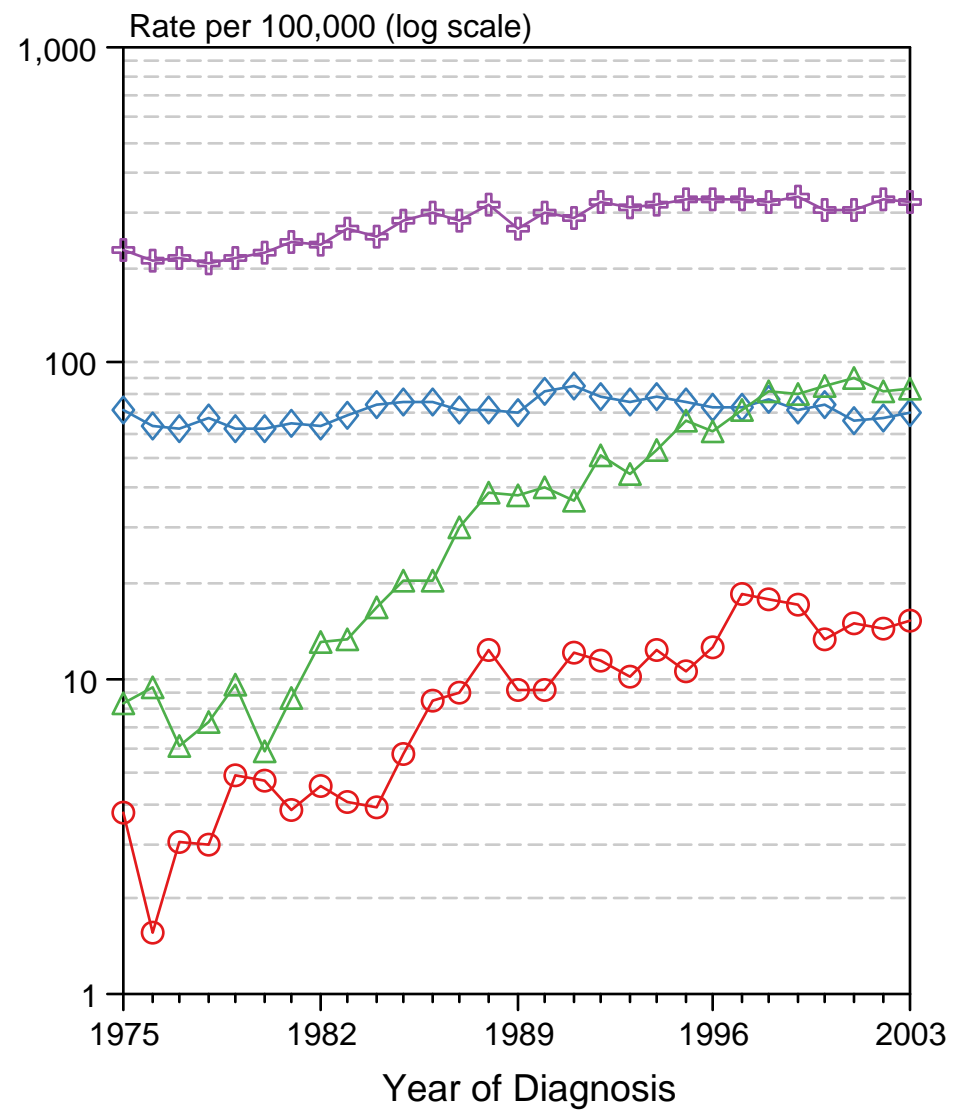
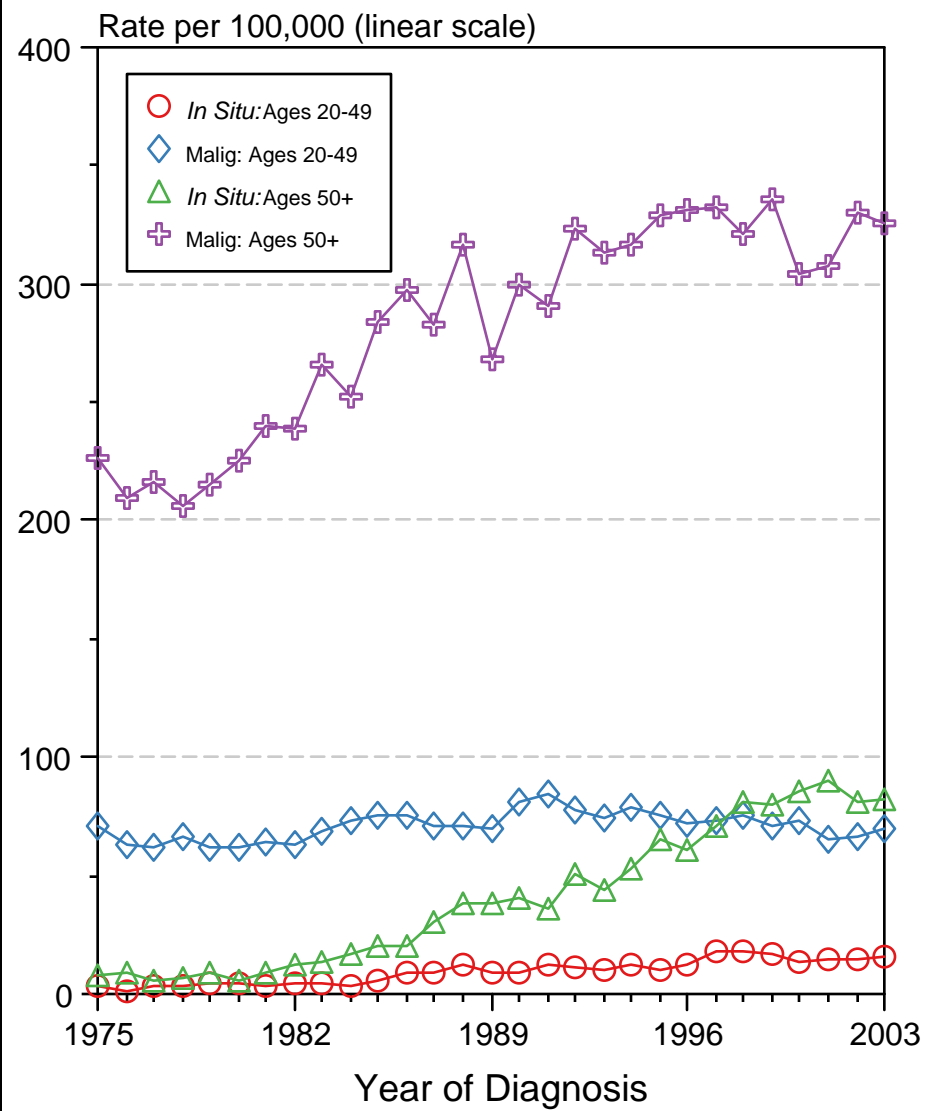
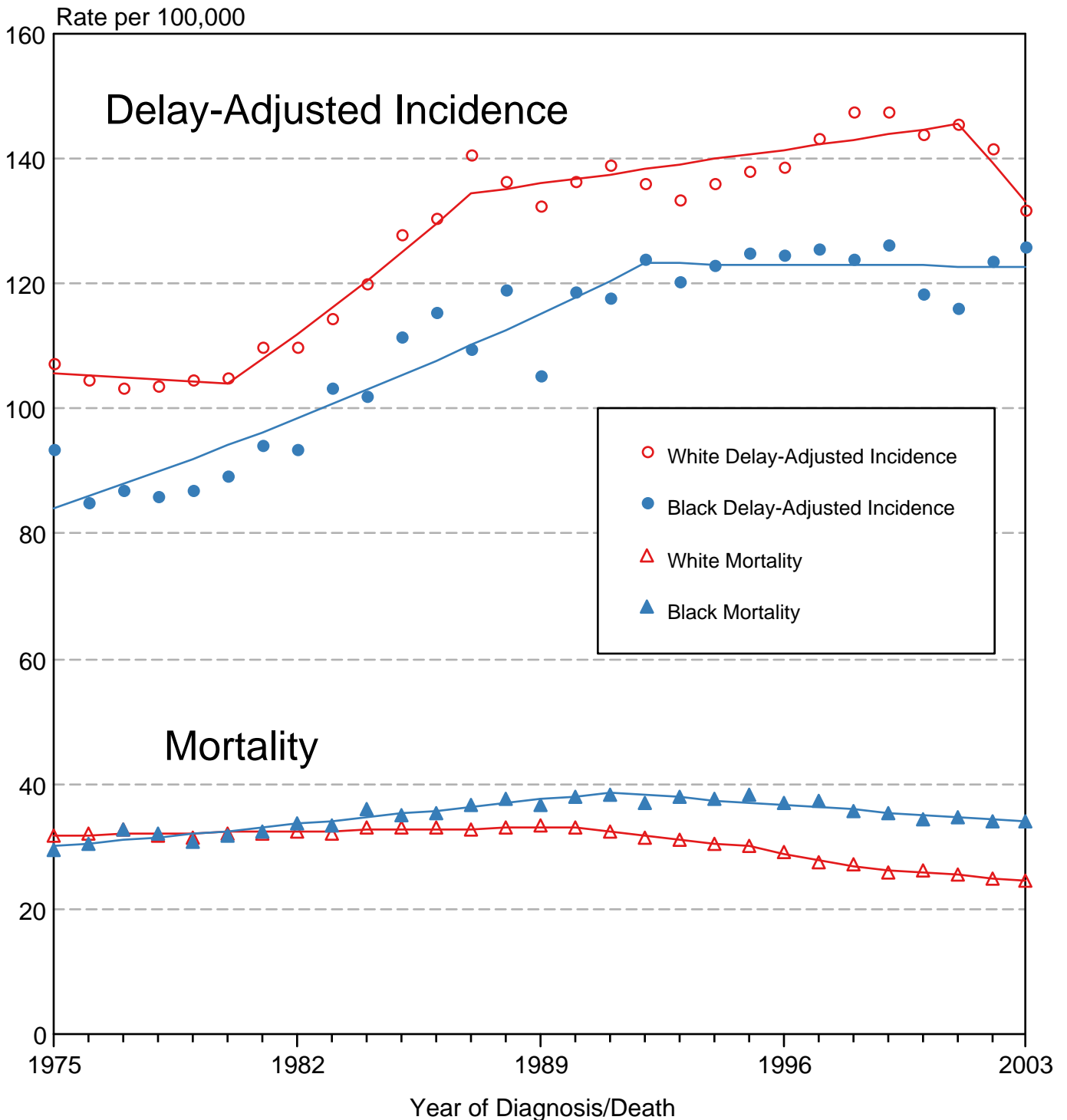


Figure IV-7

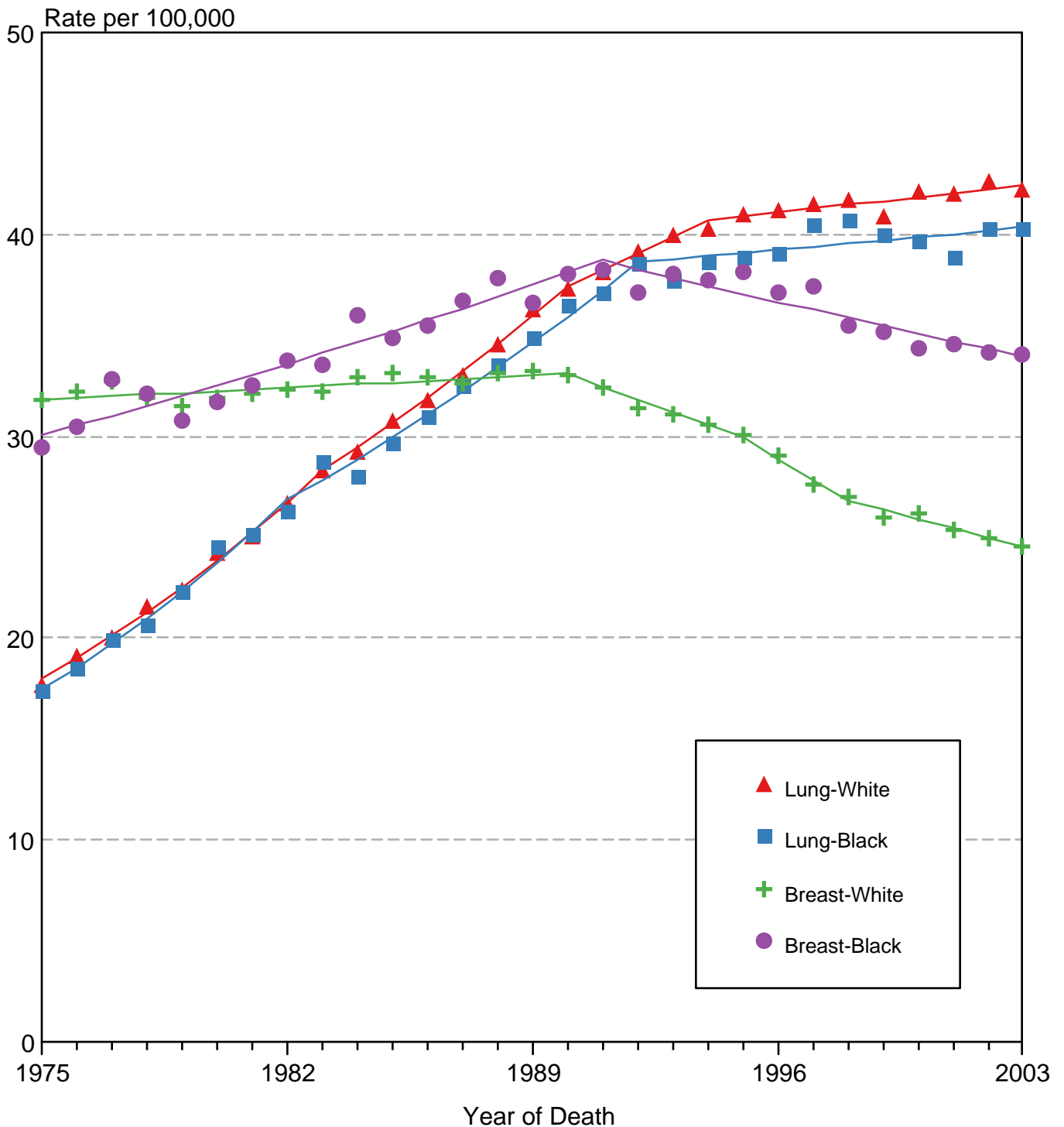
Source: SEER 9 areas. Rates are age-adjusted to the 2000 US Std Population (19 age groups - Census P25-1103).

Breast Cancer Delay-Adjusted Incidence & Mortality White Females vs Black Females 1975-2003



Source: SEER 9 areas and NCHS public use data file for the total US.
 Rates are age-adjusted to the 2000 US Std Population (19 age groups - Census P25-1103).
 Regression lines are calculated using the Joinpoint Regression Program Version 3.1, April 2006, National Cancer Institute.

Breast vs Lung Cancer Mortality White Females vs Black Females 1975-2003



Source: NCHS public use data file for the total US.
 Rates are age-adjusted to the 2000 US Std Population (19 age groups - Census P25-1103).
 Regression lines are calculated using the Joinpoint Regression Program Version 3.1, April 2006, National Cancer Institute.