

MDA Data Sharing Community of Interest



Overview

8 May 2008

Chris Raney

MDA DS COI Pilot Technical WG Co-Lead
SPAWAR Systems Center San Diego
raneyc@spawar.navy.mil
619-553-5282



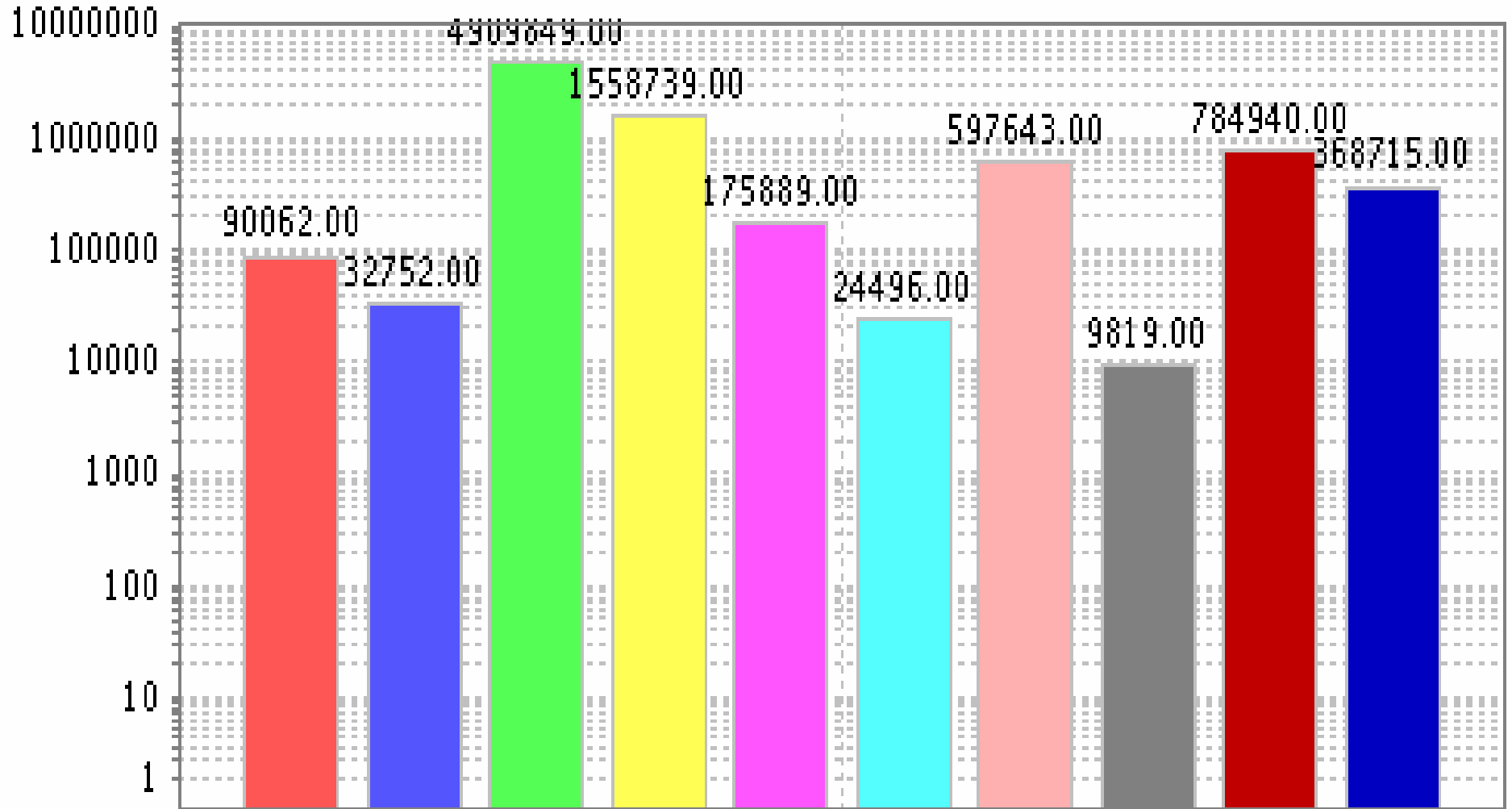
MDA DS COI Overview

- Partnership between the Navy, USCG
- Recognized exemplar for net-centric data transformation
- First instance to net-centrally share data across multiple federal agencies
- Leveraged DISA NCES and DISA DECC
- Short Spirals 8 – 12 months



Architecture

Historical Archive Total AIS Messages



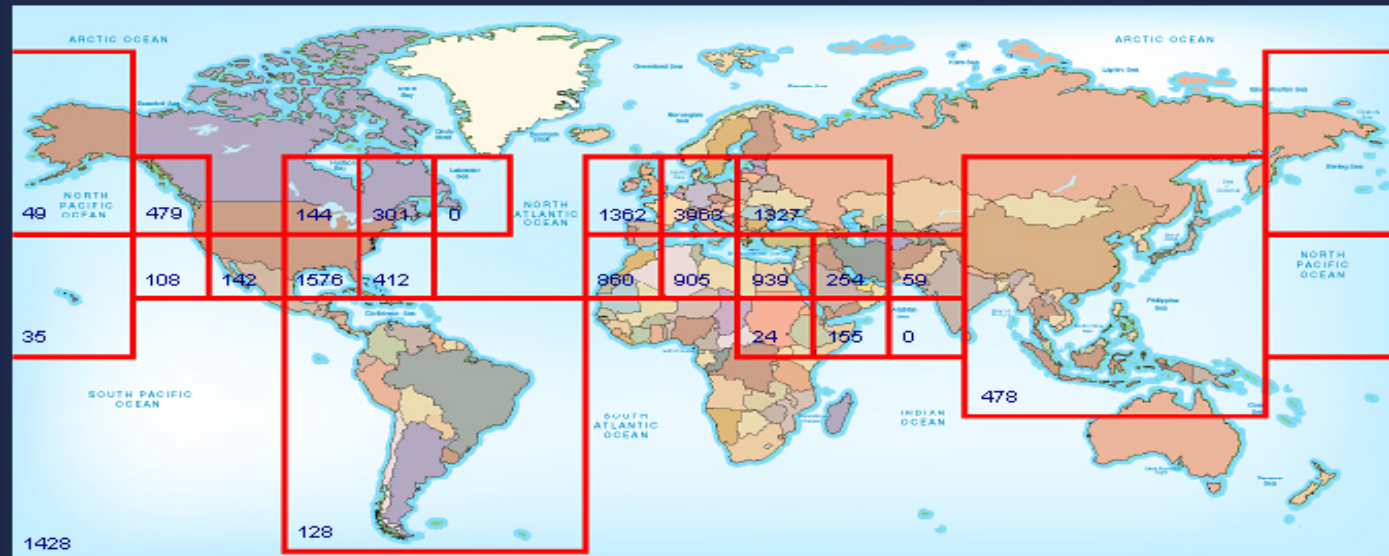
2008-05-07 13:53:58





Google Maps Mediation Service Demonstration

Below is a map with the current MDA DS COI Channels and boundaries for Spiral 2. Click on a box to view the data for that area within Google Maps (the number inside each box represent the number of ships for that channel):



- WHO WE ARE
- GOOGLE MAPS MEDIATION SERVICE
- GOOGLE EARTH MEDIATION SERVICE
- COI DEVELOPERS INFORMATION PAGE
- COI DATA PROVIDERS INFORMATION PAGE
- METRICS & REPORTING INFORMATION PAGE
- ALERTS INFORMATION PAGE
- CONTACT
- MDA WIKI SITE
- ATMOSPHERE PROPAGATION SERVICE

NAVY_C3F NAVY_C2F NAVY SMS NAIS DRDC AMRS MSSIS

Vessel Report:

NAME Submit Query

Producer Status Indicator: green - published within 5 min



MDA DS COI Google Maps

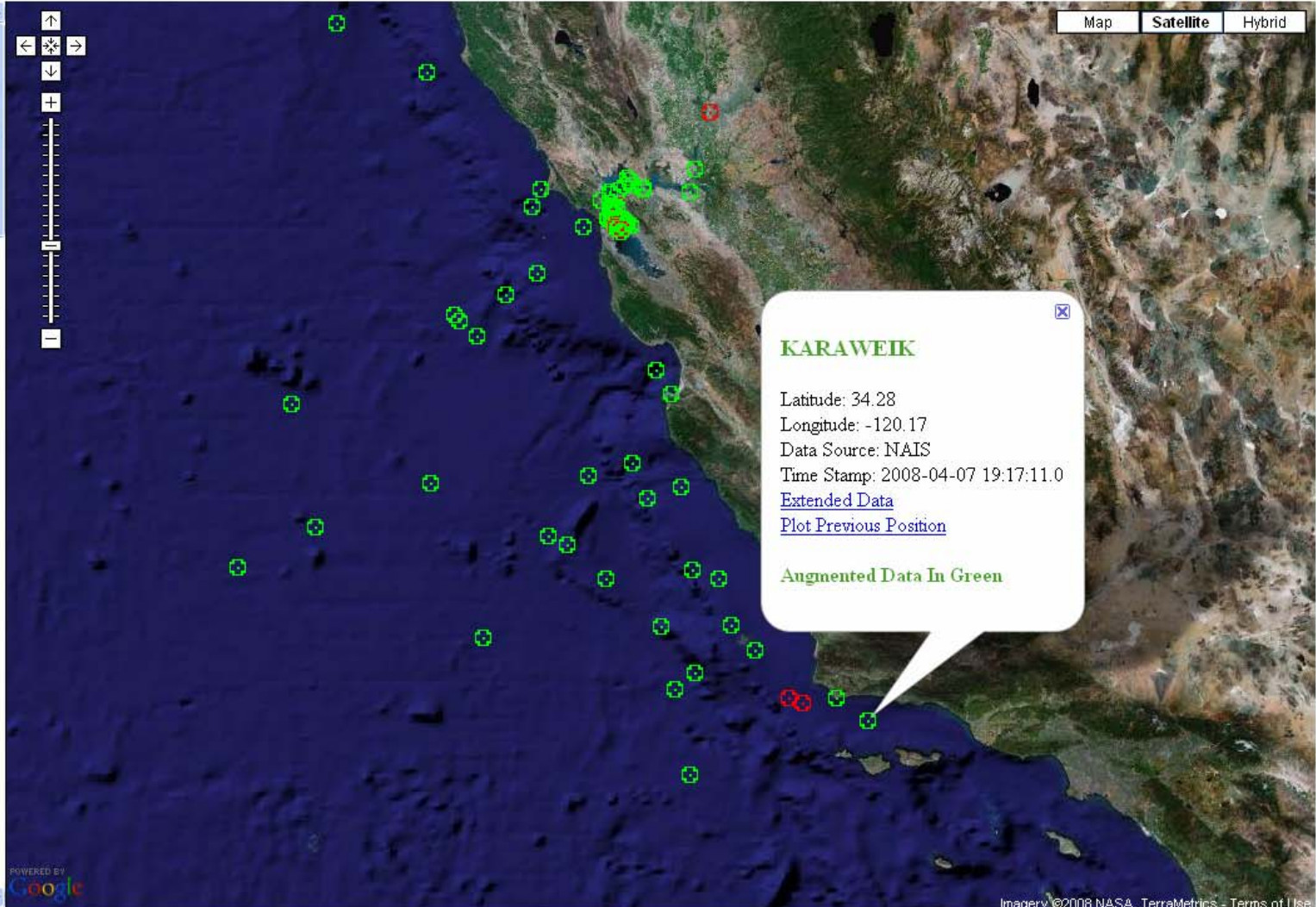
Channel - 081KE (back)

Number of total ships: 126
Number of anomalous ships: 9
Number of augmented ships: 63

Click on a vessel name below or on the map to see details
Note: Ships listed below by number only are based on radar data from SMS that has not yet been correlated with AIS data.

Sort By	
Alphabetically	Data Source

1. [AFRODITE](#)
2. [ALASKAN FRONTIER](#)
3. [ALGOL](#)
4. [AMERICAN EAGLE](#)
5. [AMY ELISE](#)
6. [APL ARABIA](#)
7. [ARTHUR FOSS](#)
8. [ATHENS STAR](#)
9. [BAY BREEZE](#)
10. [BBC MALAYSIA](#)
11. [BOB](#)
12. [BRITISH OAK](#)
13. [CAP VAN DIEMEN](#)
14. [CAPE HORN](#)
15. [CHESAPEAKE](#)
16. [CLEAN BAY II](#)
17. [CLEAN3](#)
18. [CMA CGM HUGO](#)
19. [COSCO HAMBURG](#)
20. [CSL CABO](#)
21. [CYGNUS VOYAGER](#)



POWERED BY Google

Imagery ©2008 NASA, TerraMetrics - Terms of Use

MDA DS COI Google Maps

Channel - 081KE (back)

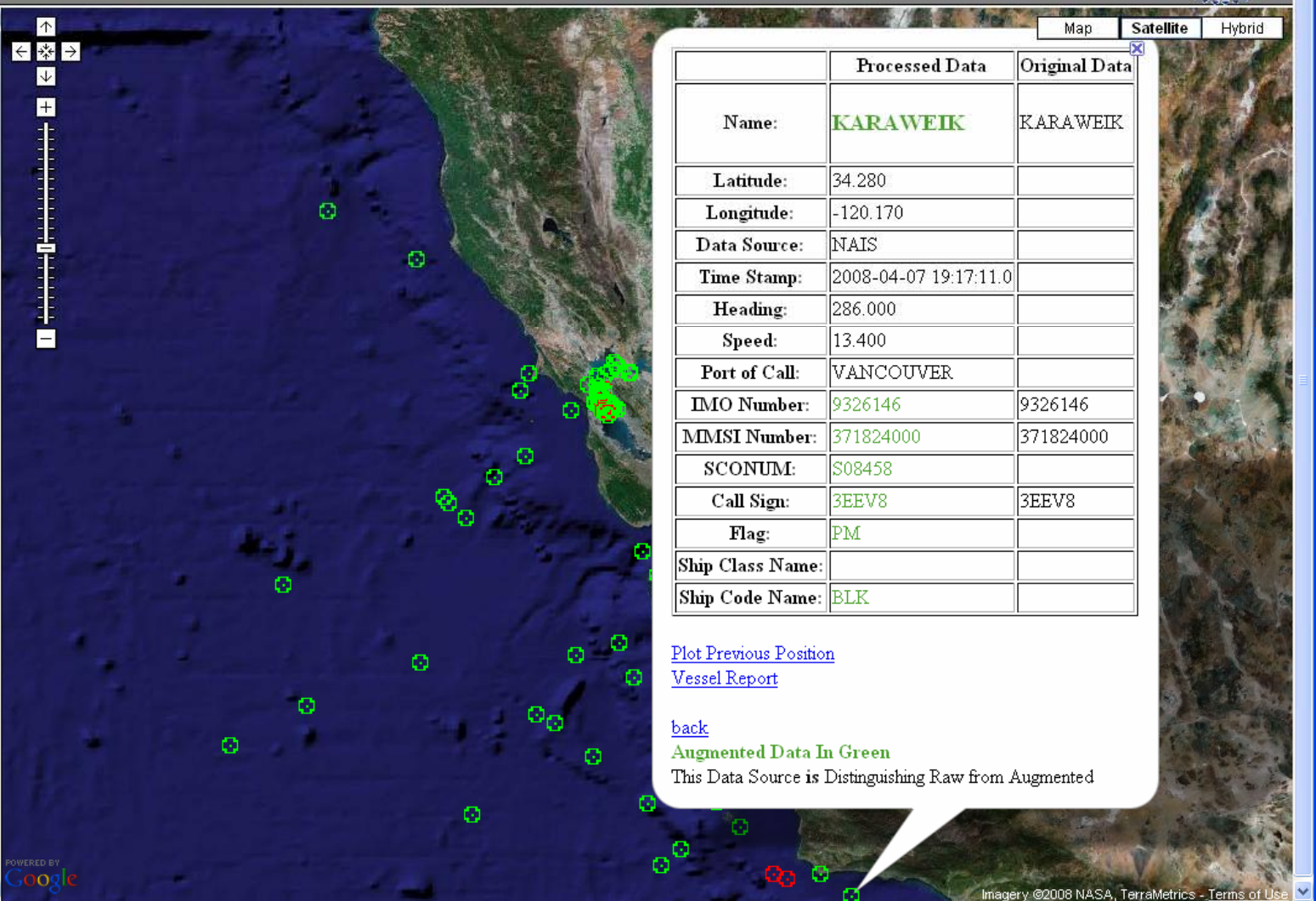
Number of total ships: 126
Number of anomalous ships: 9
Number of augmented ships: 63

Click on a vessel name below or on the map to see details
Note: Ships listed below by number only are based on radar data from SMS that has not yet been correlated with AIS data.

Sort By

Alphabetically | Data Source

1. [AFRODITE](#)
2. [ALASKAN FRONTIER](#)
3. [ALGOL](#)
4. [AMERICAN EAGLE](#)
5. [AMY ELISE](#)
6. [APL ARABIA](#)
7. [ARTHUR FOSS](#)
8. [ATHENS STAR](#)
9. [BAY BREEZE](#)
10. [BBC MALAYSIA](#)
11. [BOB](#)
12. [BRITISH OAK](#)
13. [CAP VAN DIEMEN](#)
14. [CAPE HORN](#)
15. [CHESAPEAKE](#)
16. [CLEAN BAY II](#)
17. [CLEAN3](#)
18. [CMA CGM HUGO](#)
19. [COSCO HAMBURG](#)
20. [CSL CABO](#)
21. [CYGNUS VOYAGER](#)



	Processed Data	Original Data
Name:	KARAWEIK	KARAWEIK
Latitude:	34.280	
Longitude:	-120.170	
Data Source:	NAIS	
Time Stamp:	2008-04-07 19:17:11.0	
Heading:	286.000	
Speed:	13.400	
Port of Call:	VANCOUVER	
IMO Number:	9326146	9326146
MMSI Number:	371824000	371824000
SCONUM:	S08458	
Call Sign:	3EEV8	3EEV8
Flag:	PM	
Ship Class Name:		
Ship Code Name:	BLK	

[Plot Previous Position](#)
[Vessel Report](#)

[back](#)
 Augmented Data In Green
 This Data Source is Distinguishing Raw from Augmented

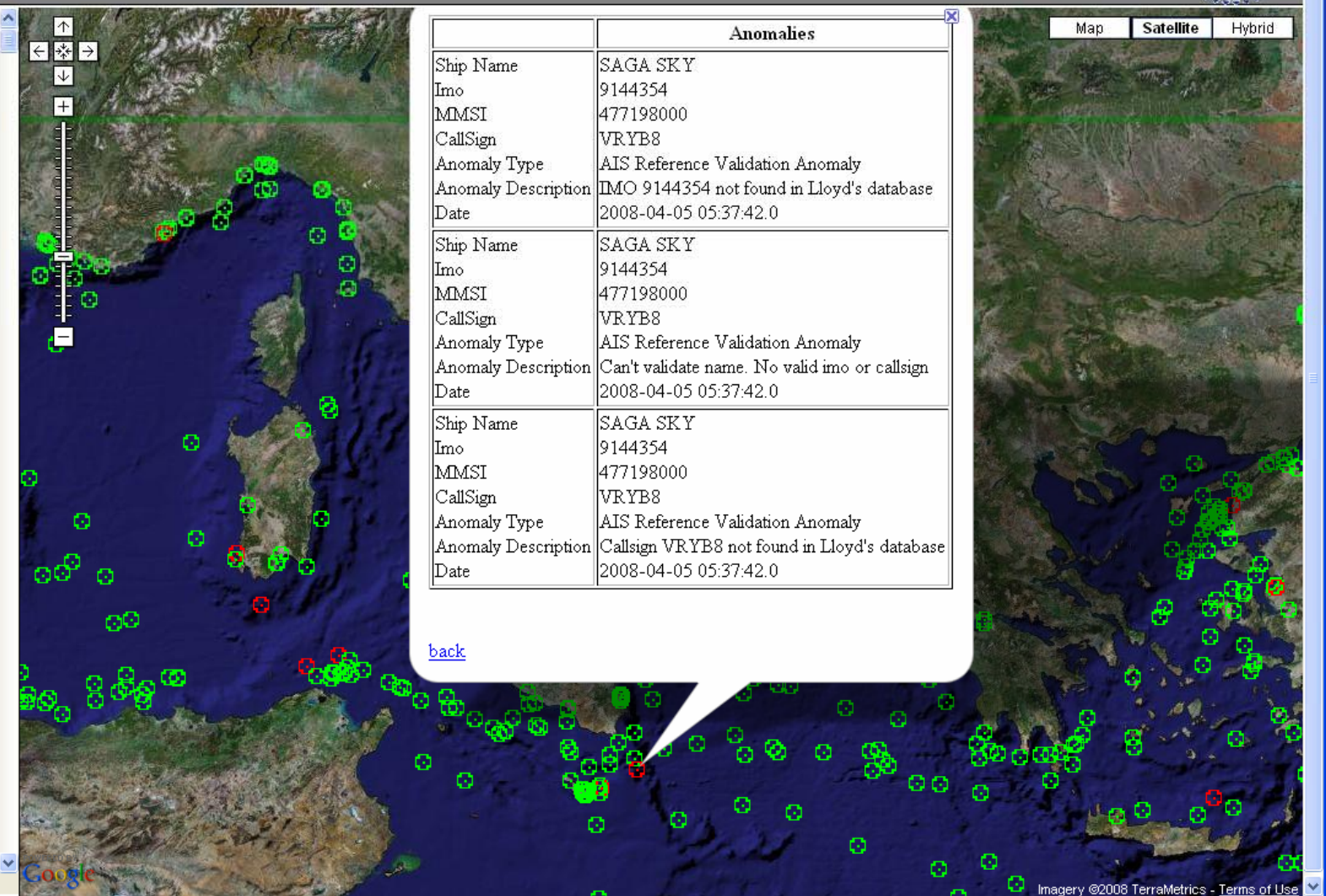
MDA DS COI Google Maps

Channel - ALL MED
[\(back\)](#)
 Number of total ships: 1123
 Number of anomalous ships: 89
 Number of augmented ships: 950

Click on a vessel name below or on the map to see details
 Note: Ships listed below by number only are based on radar data from SMS that has not yet been correlated with AIS data.

Sort By

1. [\\$MT NESA-R\\$](#)
2. [VIA ADRIATICO](#)
3. [APACHE I](#)
4. [2801](#)
5. [MSC ANNA](#)
6. [ZELEK STAR](#)
7. [ZELEK STAR](#)
8. [A ASLI](#)
9. [A ASLI](#)
10. [A PLUS 1](#)
11. [ABDULLATIF](#)
12. [ABEILLE CAMARGUE](#)
13. [ACCESS D](#)
14. [ACERGY DISCOVERY](#)
15. [ACHILLINO ONORATO](#)
16. [AD COMET II](#)
17. [ADRIANA M](#)
18. [ADRIANA](#)
19. [ADYGEYA](#)





MDA DS COI Vessel Report



Report for ZAHER III

[Print](#)

Latest AIS Data

Data Source	MSSIS
Time Stamp	2008-04-07
Name	ZAHER III
Sconum	M35274
Flag	LE
Call Sign	ODQV
Imo Number	7104972
MMSI	450421000
Heading	-32768.000
Speed	13.200
Latitude	36.780
Longitude	13.760
Ship Class Name	BOMMA MOD A
Ship Type Code	CGO



AIS Changes

Date	Data Source	Change	From	To
2007-11-26 07:55:51	TACSAT2	Name	ZAHER III	
2007-11-26 07:55:51	TACSAT2	Sconum	M35274	



Unanticipated User

Operational Website:

<https://mda.csd.disa.mil>

Demonstration Website:

<https://mda.spawar.navy.mil>