

Breaux Act

(Coastal Wetlands Planning, Protection and Restoration Act)



Colonel Peter J. Rowan
District Commander, New Orleans District
U. S. Army Corps of Engineers

OUTLINE

1. CWPPRA Overview
2. CWPPRA Organizational Structure
3. CWPPRA Process
4. CWPPRA Project Summary
5. Integration of CWPPRA and LCA



1. CWPPRA Overview



Authorization - Legislation



Breaux Act (November 1990)

- Original Breaux Act provided authority through FY 1999
- In October 1999, PL 106-74 extended authority through FY 2000
- Pittman-Robertson Wildlife Restoration Act Amendment (PL 106-408) provides authority through 2009
- Consolidated Appropriations Act, 2005 (8 Dec 04), extended Act through 2019 and removed \$70M/year cap
- Estimated Fed/non-Fed funding over life of program is \$2.0B
- Federal funding averages \$50-60M/year
- Corps serves as “banker” to other CWPPRA agencies

Authorization - Mandates



Breaux Act (Nov 1990)

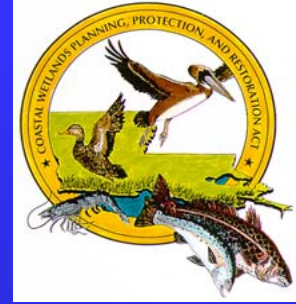
- Secretary of the Army to convene a Task Force to prepare plan for restoring and preventing loss of coastal wetlands
- Comprehensive Restoration Plan (1993)
- Annual Priority Project Lists (PPL)
- State Conservation Plan (approved Nov 97)
- Cost sharing:
 - PPL1-4 (75% Fed/25% non-Fed for expenditures thru Nov 97)
 - PPL 5-6 (90% Federal/10% non-Federal)
 - PPL 7 onward (85% Federal/15% non-Federal)

Status of Breaux Act



- Yearly funding provided from excise tax on fishing equipment and fuel taxes on motorboats and small engines
- Funding held in Department of Interior's Sport Fish Restoration Trust Fund
- Five Federal agencies sponsor projects under the program
- Focus on project delivery
- Planning limited to \$5M/year
- Bottom-up project development

Ties to Coast 2050/LCA



Wake up Call in 1997:

- First 7 yrs of projects preserved 66,000 acres by 2050
- Diversions projected to preserve 49,000 acres by 2050
- Louisiana projected to lose 515,000 acres by 2050
- CWPPRA is projected to address less than 25% of loss

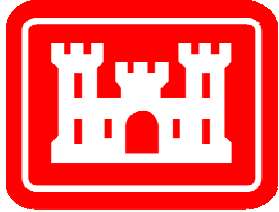
Resulted in development of Coast 2050 Plan in Dec 1998:

- Breaux Act agencies involved in development
- Regional approach to strategic planning
- Involved public through 65 workshops
- Provided a vision of what we wanted to coast to be in 2050

2. CWPPRA Organizational Structure



LA Coastal Wetlands Conservation and Restoration Task Force



USACE: Colonel Peter J. Rowan
District Commander

NRCS: Don Gohmert
State Conservationist

NMFS: Rollie Schmitten
Director, Habitat Conservation Center

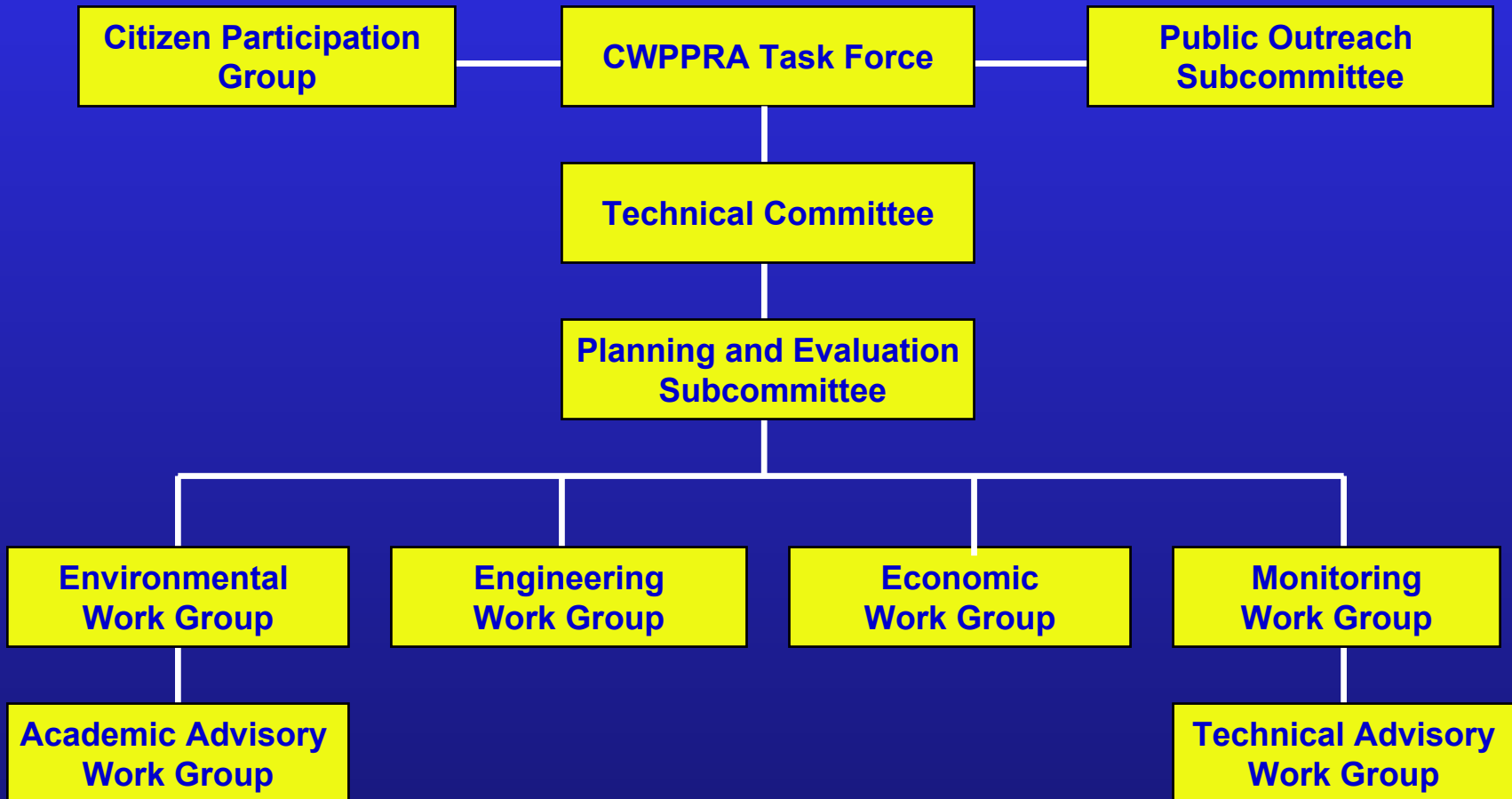
USFWS: Sam Hamilton
Regional Director, Southeast Region

USEPA: Miguel Flores
Director, Water Quality Protection Division

State of LA: Sidney Coffee
Executive Assistant for Coastal Activities



BREAUX ACT ORGANIZATIONAL STRUCTURE



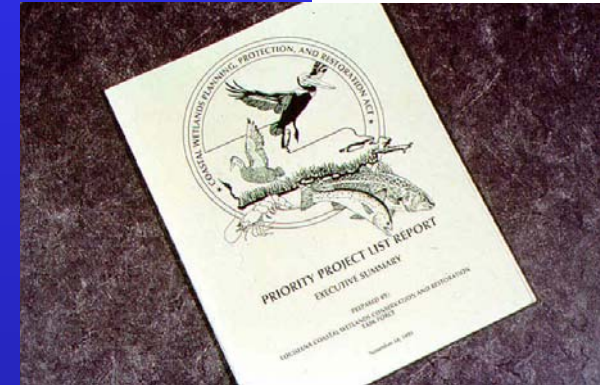
3. CWPPRA Process





“Breaux Act” Process

- Planning/Outreach (Phase 0)
PPL process
- Feasibility/P&S (Phase I)
- Construction (Phase II)
Monitoring
O & M



Typical Breaux Act Project Schedule

Regional Planning
Teams (RPT) meet to
identify nominees

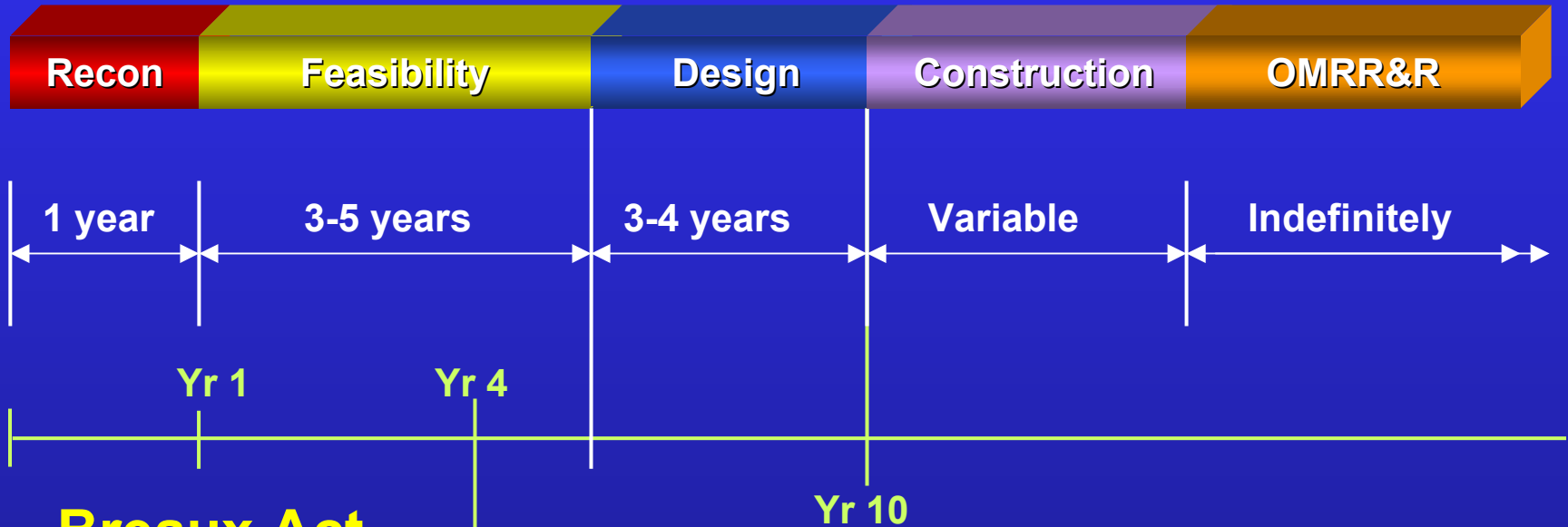
Task Force
Authorization

Task Force
Authorization

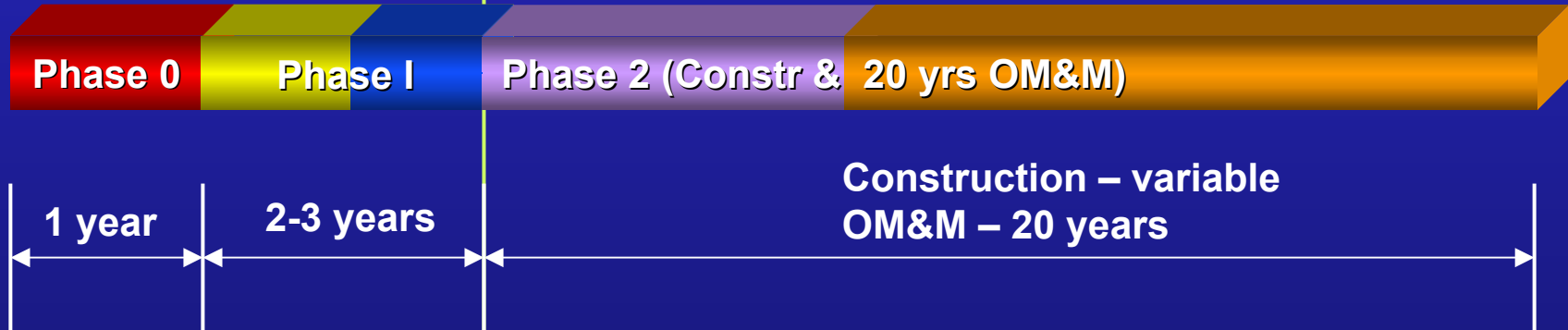


Schedule Timeline Comparison

WRDA



Breaux Act



Process Comparisons

	<u>WRDA</u>	<u>Breaux Act</u>
Study/Construction Authorization	Congressional	Task Force
Review level/approval	National	Louisiana
Time to Start Construction	7-10 years	4 years
Program Authority	no time limit	Ends in 2019
Project Justification	Detailed	Less detailed
Lead Federal Agency	Corps	Varies
# Cost Share Agreements Required	3	1 or 2

Funding Comparisons

	<u>WRDA</u>	<u>Breaux Act</u>
Annual Funding	Congressional Appropriation	Trust Fund
Fiscal Constraints	Subject to re-programming	Dedicated funds
Funding Limit	Project-specific	\$2.0B thru FY2019
Operation & Maintenance	Local responsibility	Funded over 20-yr life

Cost Share Comparisons

(Federal%/Non-Fed%)

<u>PHASE</u>	<u>WRDA</u>	<u>Breaux Act</u>
Reconnaissance	100% / 0%	100% / 0%
Feasibility	50% / 50%	85% / 15%
Design	75% / 25%	85% / 15%
Construction	65% / 35%	85% / 15%
O&M	0% / 100%	85% / 15%
O&M Time Limit	Indefinite	20 years

4. CWPPRA Project Summary

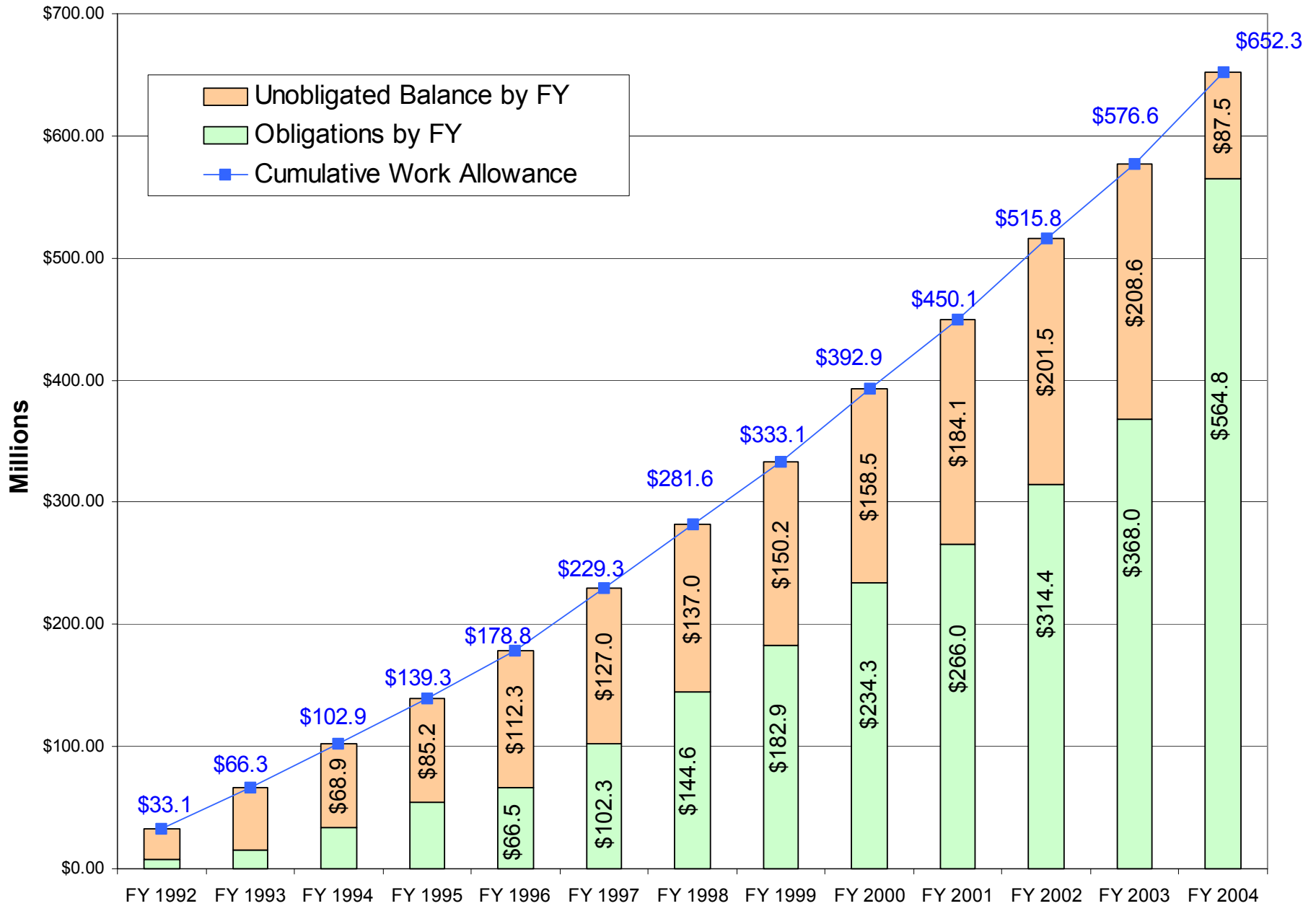


Status of Breaux Act



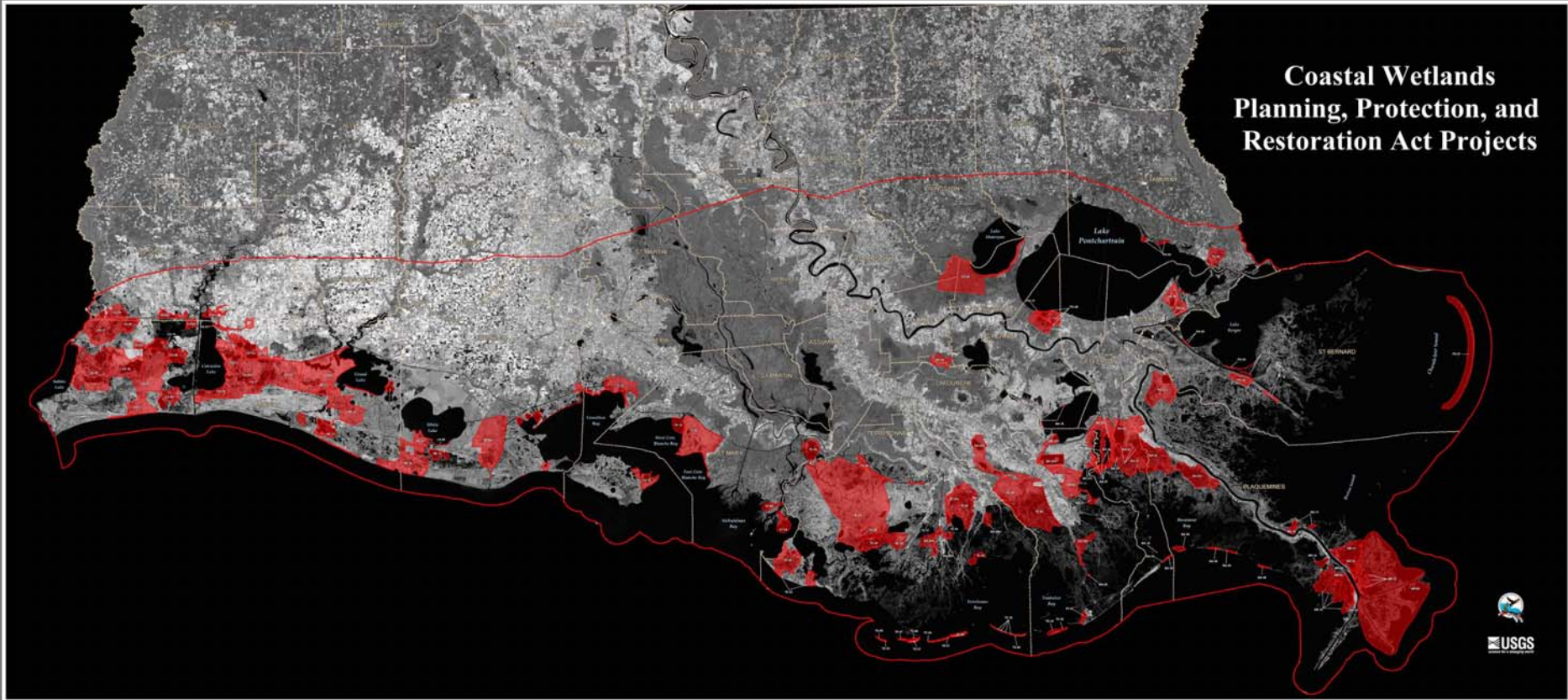
- 129 active projects on 13 Priority Project Lists (PPLs):
 - ✓ 64 projects completed
 - ✓ 11 projects under construction
 - ✓ 13 scheduled for construction in FY05
 - ✓ 41 scheduled for construction in FY06 and later
- Projects restore, create, or protect 116,751 acres of coastal wetlands (PPL 1-13)
- Total cost of all projects PPLs 1-13 and planning is \$1.7B

CWPPRA Program - Obligations



Project Boundaries for Breaux Act Projects PPL 1-13

Coastal Wetlands Planning, Protection, and Restoration Act Projects



Coastal Wetlands Planning, Protection, and Restoration Act Projects

13-01	Acadiana Wetland Reserve	13-02	Acadiana Wetland Reserve	13-03	Acadiana Wetland Reserve	13-04	Acadiana Wetland Reserve	13-05	Acadiana Wetland Reserve	13-06	Acadiana Wetland Reserve	13-07	Acadiana Wetland Reserve	13-08	Acadiana Wetland Reserve	13-09	Acadiana Wetland Reserve	13-10	Acadiana Wetland Reserve	13-11	Acadiana Wetland Reserve	13-12	Acadiana Wetland Reserve	13-13	Acadiana Wetland Reserve	13-14	Acadiana Wetland Reserve	13-15	Acadiana Wetland Reserve	13-16	Acadiana Wetland Reserve	13-17	Acadiana Wetland Reserve	13-18	Acadiana Wetland Reserve	13-19	Acadiana Wetland Reserve	13-20	Acadiana Wetland Reserve	13-21	Acadiana Wetland Reserve	13-22	Acadiana Wetland Reserve	13-23	Acadiana Wetland Reserve	13-24	Acadiana Wetland Reserve	13-25	Acadiana Wetland Reserve	13-26	Acadiana Wetland Reserve	13-27	Acadiana Wetland Reserve	13-28	Acadiana Wetland Reserve	13-29	Acadiana Wetland Reserve	13-30	Acadiana Wetland Reserve	13-31	Acadiana Wetland Reserve	13-32	Acadiana Wetland Reserve	13-33	Acadiana Wetland Reserve	13-34	Acadiana Wetland Reserve	13-35	Acadiana Wetland Reserve	13-36	Acadiana Wetland Reserve	13-37	Acadiana Wetland Reserve	13-38	Acadiana Wetland Reserve	13-39	Acadiana Wetland Reserve	13-40	Acadiana Wetland Reserve	13-41	Acadiana Wetland Reserve	13-42	Acadiana Wetland Reserve	13-43	Acadiana Wetland Reserve	13-44	Acadiana Wetland Reserve	13-45	Acadiana Wetland Reserve	13-46	Acadiana Wetland Reserve	13-47	Acadiana Wetland Reserve	13-48	Acadiana Wetland Reserve	13-49	Acadiana Wetland Reserve	13-50	Acadiana Wetland Reserve	13-51	Acadiana Wetland Reserve	13-52	Acadiana Wetland Reserve	13-53	Acadiana Wetland Reserve	13-54	Acadiana Wetland Reserve	13-55	Acadiana Wetland Reserve	13-56	Acadiana Wetland Reserve	13-57	Acadiana Wetland Reserve	13-58	Acadiana Wetland Reserve	13-59	Acadiana Wetland Reserve	13-60	Acadiana Wetland Reserve	13-61	Acadiana Wetland Reserve	13-62	Acadiana Wetland Reserve	13-63	Acadiana Wetland Reserve	13-64	Acadiana Wetland Reserve	13-65	Acadiana Wetland Reserve	13-66	Acadiana Wetland Reserve	13-67	Acadiana Wetland Reserve	13-68	Acadiana Wetland Reserve	13-69	Acadiana Wetland Reserve	13-70	Acadiana Wetland Reserve	13-71	Acadiana Wetland Reserve	13-72	Acadiana Wetland Reserve	13-73	Acadiana Wetland Reserve	13-74	Acadiana Wetland Reserve	13-75	Acadiana Wetland Reserve	13-76	Acadiana Wetland Reserve	13-77	Acadiana Wetland Reserve	13-78	Acadiana Wetland Reserve	13-79	Acadiana Wetland Reserve	13-80	Acadiana Wetland Reserve	13-81	Acadiana Wetland Reserve	13-82	Acadiana Wetland Reserve	13-83	Acadiana Wetland Reserve	13-84	Acadiana Wetland Reserve	13-85	Acadiana Wetland Reserve	13-86	Acadiana Wetland Reserve	13-87	Acadiana Wetland Reserve	13-88	Acadiana Wetland Reserve	13-89	Acadiana Wetland Reserve	13-90	Acadiana Wetland Reserve	13-91	Acadiana Wetland Reserve	13-92	Acadiana Wetland Reserve	13-93	Acadiana Wetland Reserve	13-94	Acadiana Wetland Reserve	13-95	Acadiana Wetland Reserve	13-96	Acadiana Wetland Reserve	13-97	Acadiana Wetland Reserve	13-98	Acadiana Wetland Reserve	13-99	Acadiana Wetland Reserve	14-00	Acadiana Wetland Reserve
-------	--------------------------	-------	--------------------------	-------	--------------------------	-------	--------------------------	-------	--------------------------	-------	--------------------------	-------	--------------------------	-------	--------------------------	-------	--------------------------	-------	--------------------------	-------	--------------------------	-------	--------------------------	-------	--------------------------	-------	--------------------------	-------	--------------------------	-------	--------------------------	-------	--------------------------	-------	--------------------------	-------	--------------------------	-------	--------------------------	-------	--------------------------	-------	--------------------------	-------	--------------------------	-------	--------------------------	-------	--------------------------	-------	--------------------------	-------	--------------------------	-------	--------------------------	-------	--------------------------	-------	--------------------------	-------	--------------------------	-------	--------------------------	-------	--------------------------	-------	--------------------------	-------	--------------------------	-------	--------------------------	-------	--------------------------	-------	--------------------------	-------	--------------------------	-------	--------------------------	-------	--------------------------	-------	--------------------------	-------	--------------------------	-------	--------------------------	-------	--------------------------	-------	--------------------------	-------	--------------------------	-------	--------------------------	-------	--------------------------	-------	--------------------------	-------	--------------------------	-------	--------------------------	-------	--------------------------	-------	--------------------------	-------	--------------------------	-------	--------------------------	-------	--------------------------	-------	--------------------------	-------	--------------------------	-------	--------------------------	-------	--------------------------	-------	--------------------------	-------	--------------------------	-------	--------------------------	-------	--------------------------	-------	--------------------------	-------	--------------------------	-------	--------------------------	-------	--------------------------	-------	--------------------------	-------	--------------------------	-------	--------------------------	-------	--------------------------	-------	--------------------------	-------	--------------------------	-------	--------------------------	-------	--------------------------	-------	--------------------------	-------	--------------------------	-------	--------------------------	-------	--------------------------	-------	--------------------------	-------	--------------------------	-------	--------------------------	-------	--------------------------	-------	--------------------------	-------	--------------------------	-------	--------------------------	-------	--------------------------	-------	--------------------------	-------	--------------------------	-------	--------------------------	-------	--------------------------	-------	--------------------------	-------	--------------------------	-------	--------------------------	-------	--------------------------	-------	--------------------------	-------	--------------------------	-------	--------------------------

■ CWRMA Project Boundary

Lake and Lake Project Boundary

Locality Point Boundary

Scale: 0 10 20 Miles

Scale: 0 10 20 Kilometers

North Arrow

Map of Louisiana showing project location

This map represents a plan view of coastal wetlands projects that have been approved by state and federal agencies as of 2014. It should be noted that some projects in use or not completed and some may appear to be contained on the map of funding or other sources.

Map Date: 2014

Map Author: USGS

Map Project: Coastal Wetlands Planning, Protection, and Restoration Act Projects

Map Scale: 1:500,000

Map Projection: NAD 83, UTM Zone 18N

Map Data: USGS, NOAA, and other sources

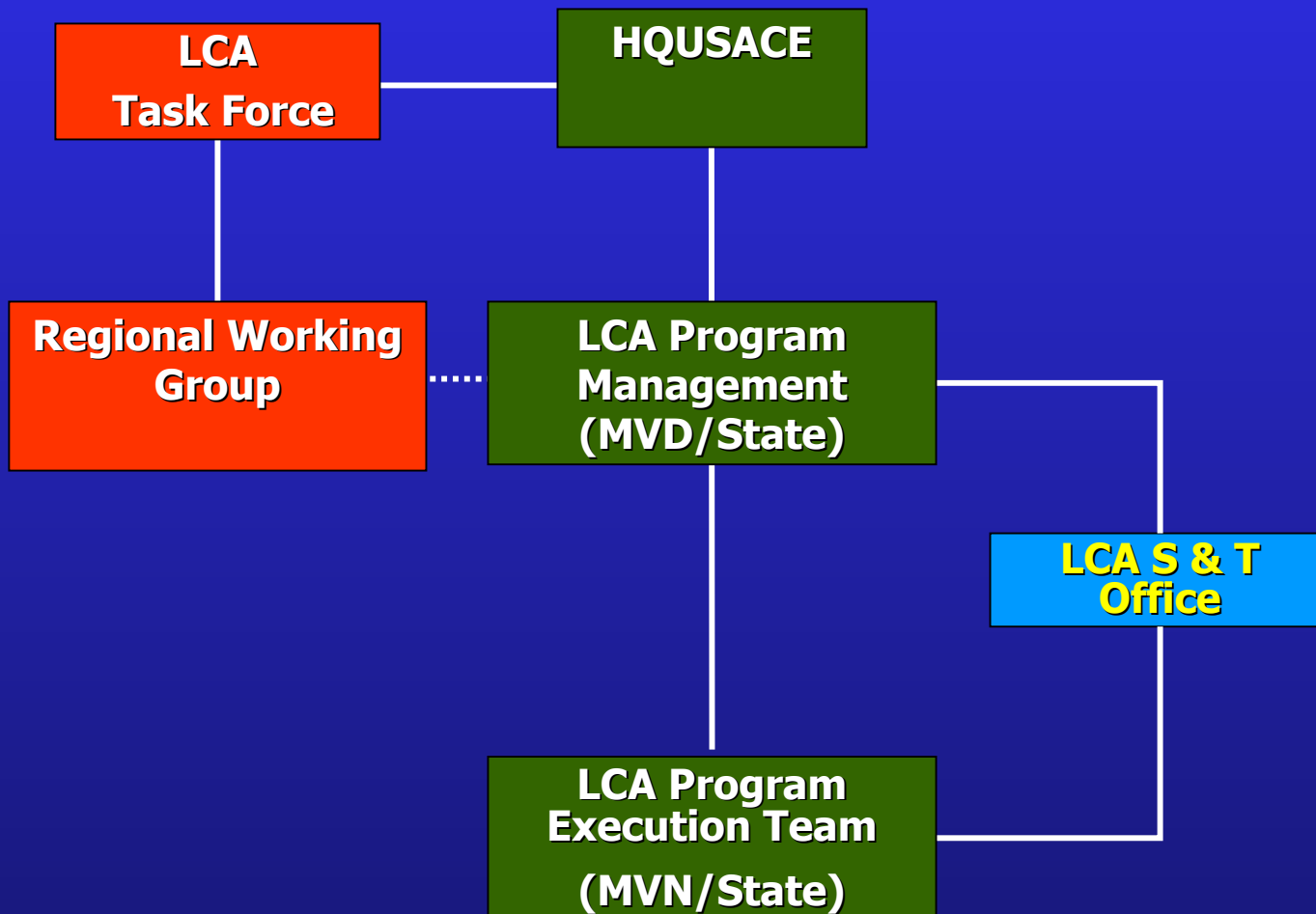


5. Integration of CWPPRA and LCA



LCA

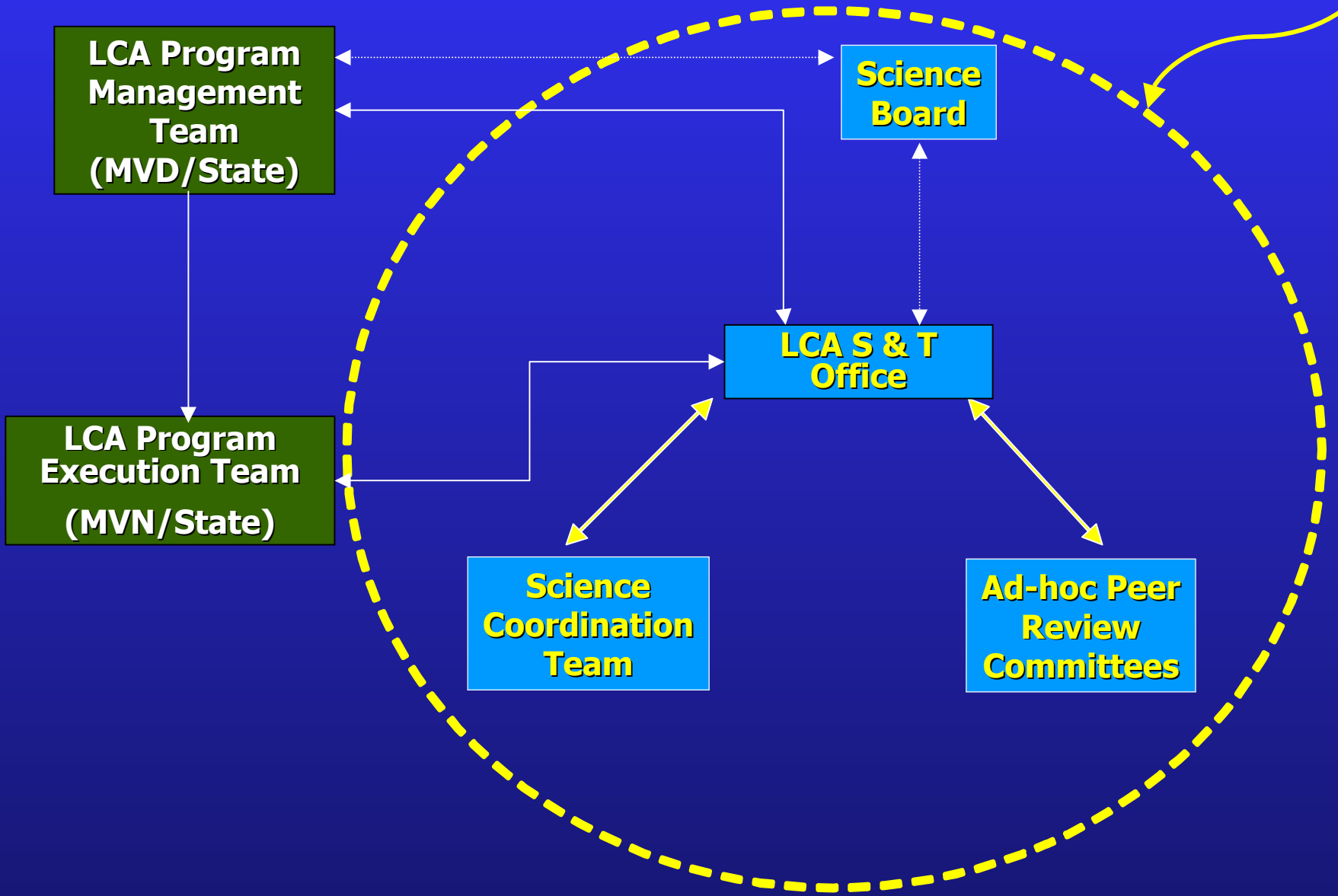
Management Structure



Integration LCA & CWPPRA

- Regional Working Group members are also members of the CWPPRA Task Force*
- Project Execution Team is comprised of the CWPPRA Task Force agencies co-located at the New Orleans District*
- Science Coordination Team includes representation of CWPPRA Task Force agencies*

Science and Technology Program



CWPPRA Into LCA

CWPPRA Projects in LCA Near Term Plan:

- *Myrtle Grove Diversion*
- *MRGO Shoreline Protection*
- *Small Diversion into Hope Canal*
- *Bayou Lafourche Freshwater Diversion*
- *White's Ditch*

Other Activities:

- *Coastwide Reference Monitoring System (CRMS)*
- *Co-located Team*
- *Involvement of local government, NGOs, general public*
- *Public Participation (NewsFlash, mailing lists, Parish contacts)*
- *GIS and data management platform*
- *Internet site (www.lacoast.gov)*

QUESTIONS?



Colonel Peter J. Rowan
District Commander, New Orleans District
U. S. Army Corps of Engineers