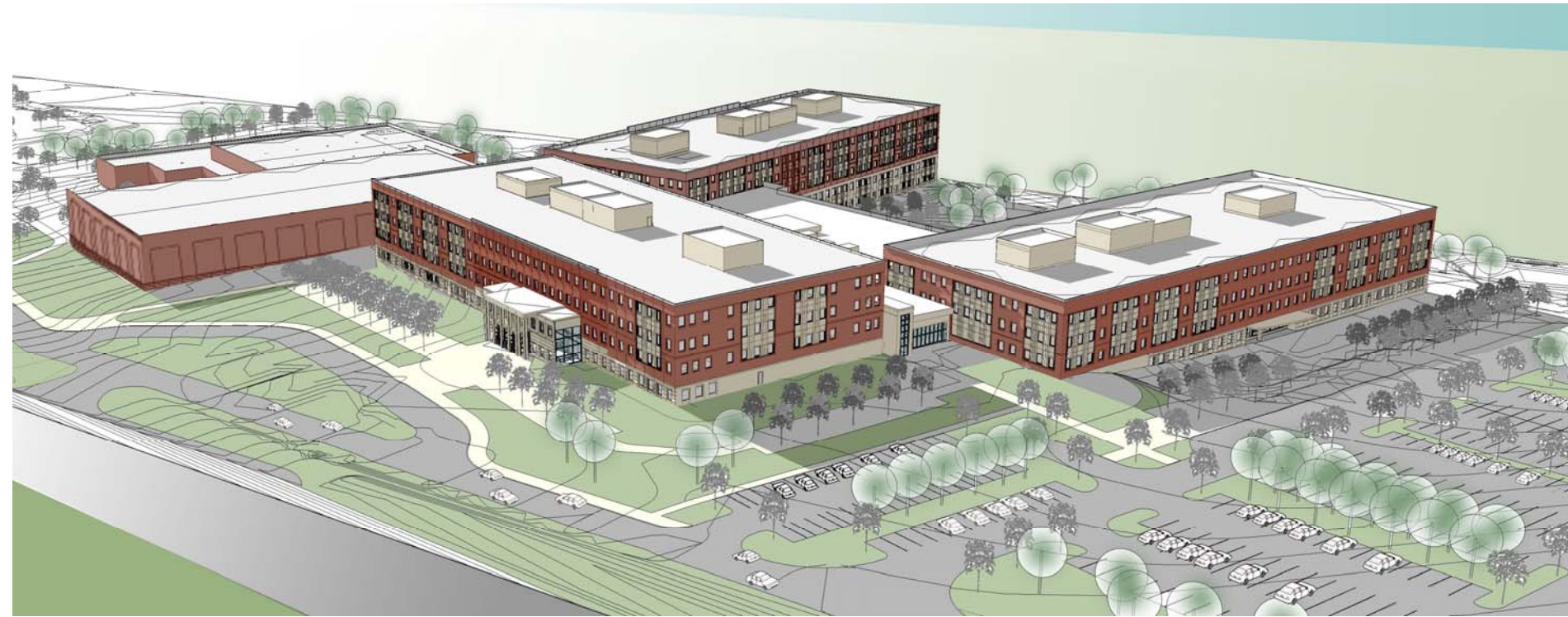


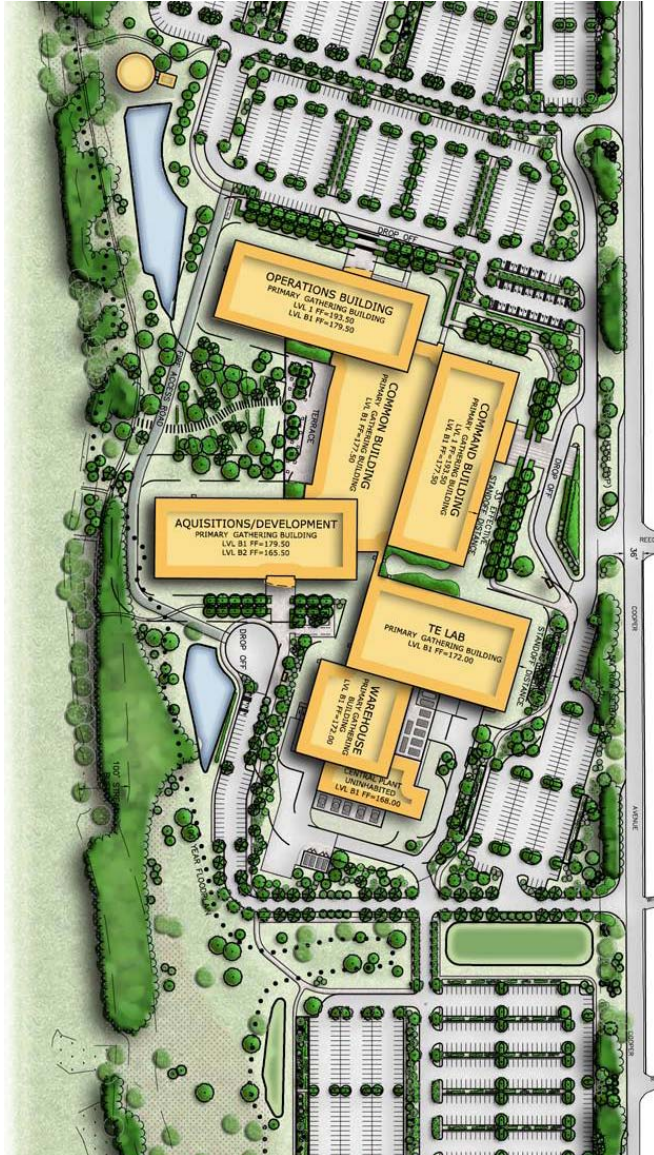


# DISA BRAC Program

8 August 2008



- **Contract awarded to Hensel Phelps Construction Co.**
- **Designer of Record is RTKL**
- **Contracting Office is U.S. Army Corps of Engineers**
- **Site is Fort George G. Meade**
- **Award Contract – 29 Feb 08**
- **Begin Design – Mar 2008**
- **Groundbreaking – 16 Apr 08**
- **Begin Construction – 15 Jul 08**
- **Complete Design – Mar 2009**
- **Complete Construction – Feb 2011**



## PROJECT SUMMARY

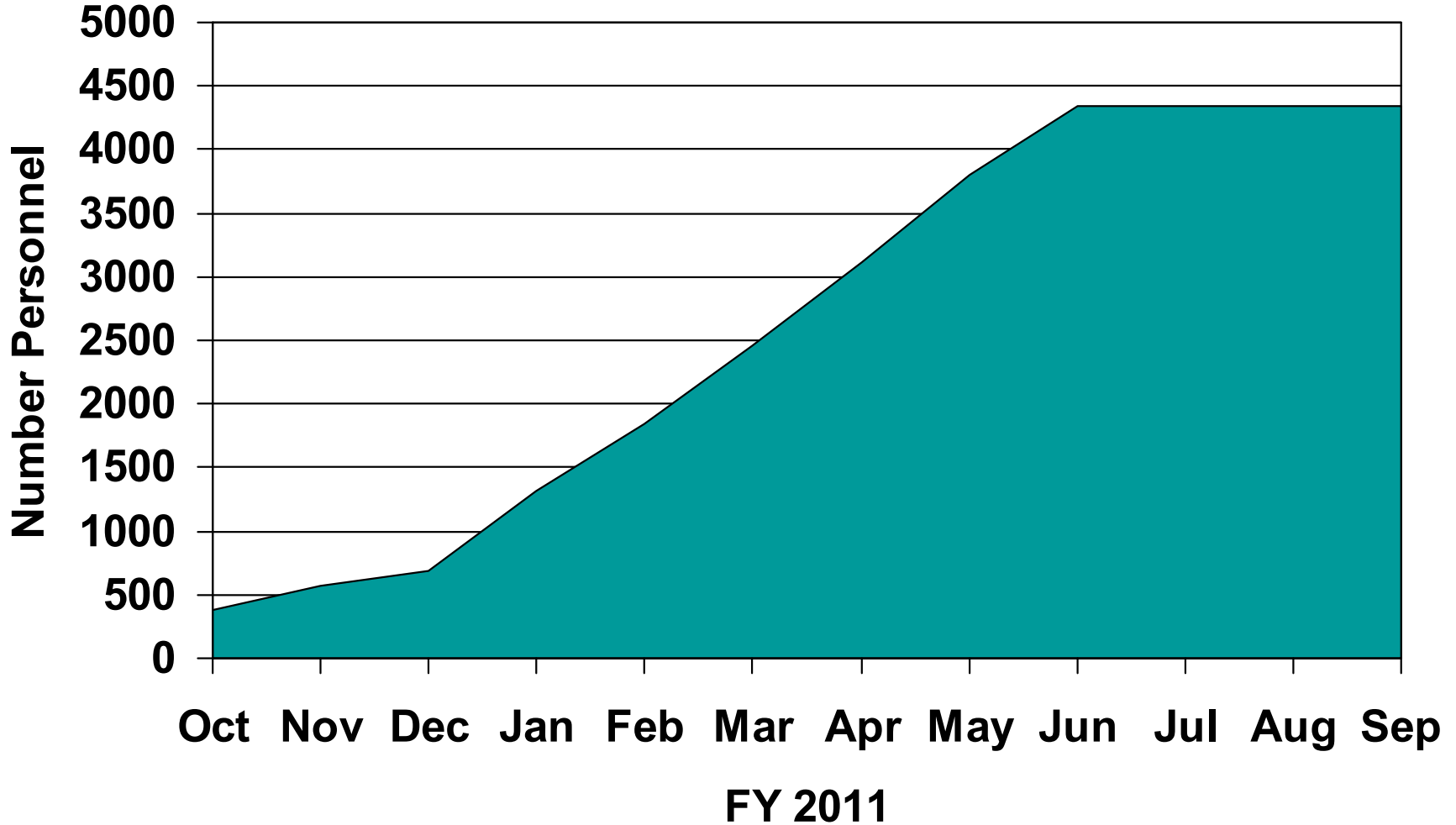
- Move DISA Headquarters, JTF-GNO, and tenants to Ft Meade by Sep 2011
- Build 1.1 million GSF facility on Fort Meade golf course
- Move 4,272 personnel to Ft Meade
  - Mil 340, Civ 2493, Direct Ctr 1439
  - Indirect contractors add 3000 to 5000

## PROJECT TIMELINE

- Issue TOF letters – Oct 2009
- Begin Relocation – Oct 2010
  - Command Bldg done – Oct 2010
  - Acquisition Bldg done – Jan 2011
  - Operations Bldg done – Feb 2011
- Complete Relocation – Jul 2011
- Vacate Leased Space – Sep 2011



# Relocations Completed

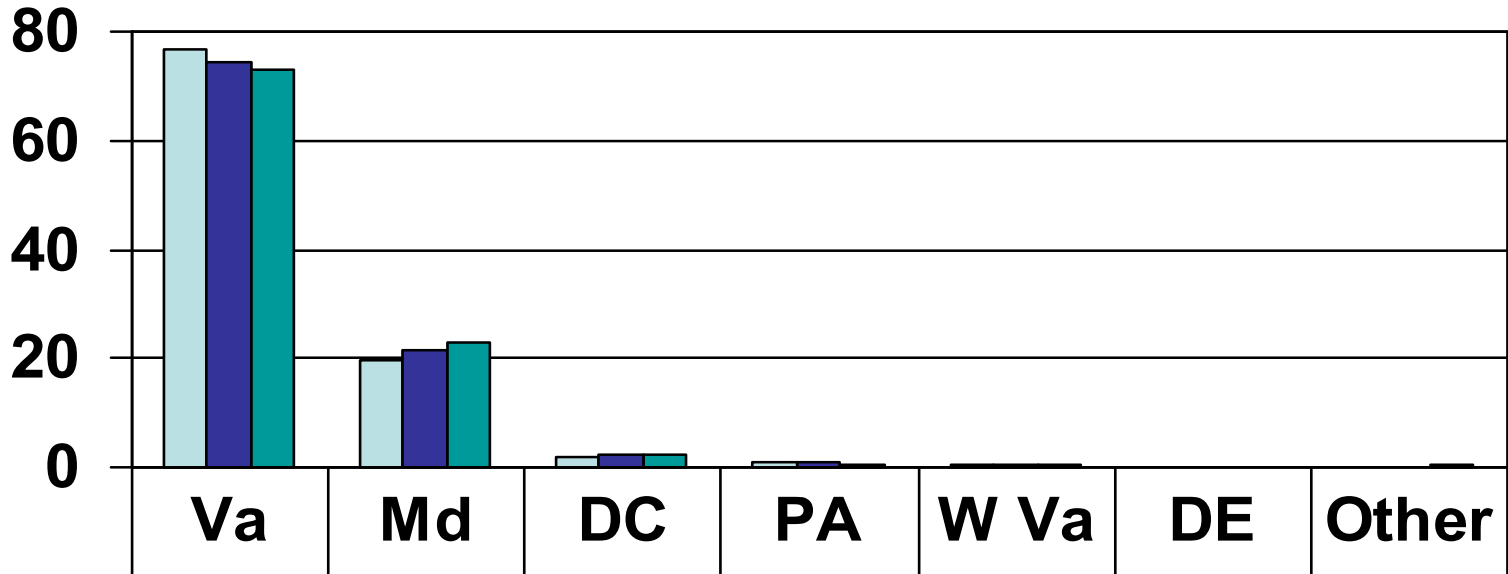


**Expected relocation presence in FY11 = 61%**



# BRAC Survey Results

## Employees by State Residence



2005	76.6	19.6	2.1	1	0.7		
2006	74.2	21.7	2.5	1	0.6		
2008	72.9	22.8	2.3	0.7	0.7	0.1	0.5

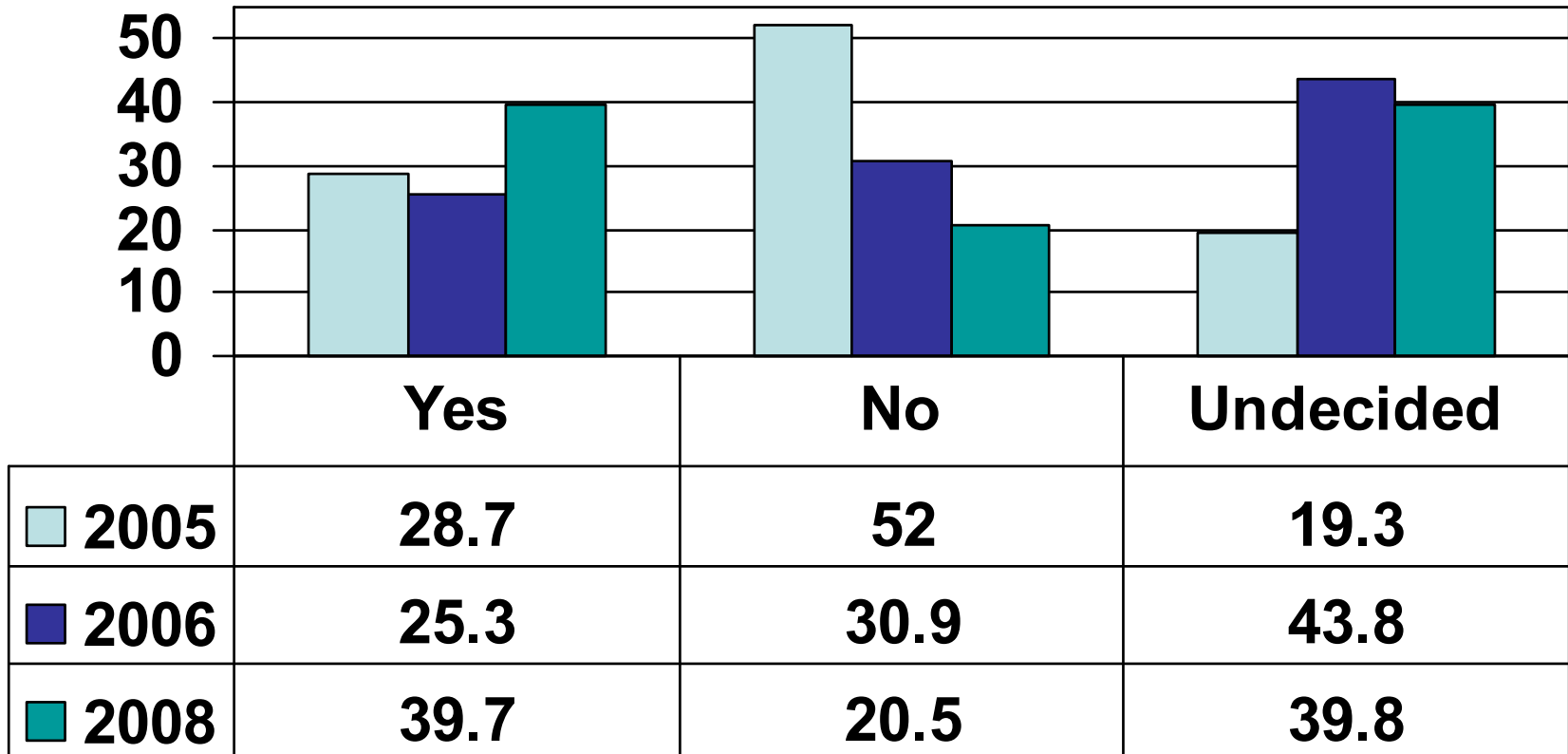
Mandatory question (Delaware and other option added for 08)





# BRAC Survey Results

## Do you plan to accept transfer to Ft Meade?



Mandatory question



# DISA Concerns

---

- **Road Improvements**
  - Minimizing commuting time
  - Improving traffic flow onto Ft Meade
- **Public Transportation**
  - Filling in the gap from MARC stations to Ft Meade
  - Providing complete path for Northern Virginia commuters
- **Education**
  - Reciprocal agreement between Maryland and Virginia over in state tuition
- **Providing employees with information needed to make decision**
  - Continued outreach to Maryland state and regional organizations
- **Meeting BRAC target date**
  - So far, everything is going extremely well



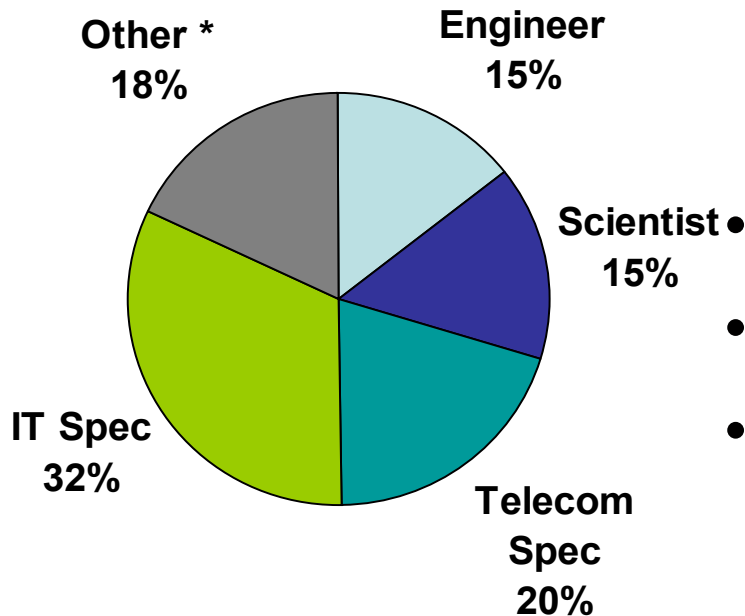
# BRAC Contracts

- **Construction**
  - U.S. Army Corps of Engineers (USACE) Baltimore District
  - Design/Build (MT) Fixed Price Best Value with Award Fee Contract
- **Furniture**
  - U.S. Army Corps of Engineers (USACE) Baltimore District
  - Lease off GSA Schedule
- **IT Infrastructure**
  - U.S. Army Information Systems Engineering Command (ISEC), Ft Huachuca, AZ
  - Use existing ISEC contract vehicles
- **Relocation**
  - U.S. Army Corps of Engineers (USACE) Baltimore District
  - Consolidated relocation services



# Mission Imperatives: Essential People, Critical Skills

**82% of DISA workforce is technical or scientific  
(94% if we include contractors)**



\* Financial, program management, personnel, contracting, etc.

## DISA: a highly professionalized workforce

- Skills have been developed over time
  - SATCOM engineering
  - NetOps
  - Enterprise-wide systems engineering
- Many skills require advanced degrees
- All positions require a clearance
- 8–10 years experience required to reach journeyman level – key institutional knowledge
- Average DISA employee has 18 years of federal service

**We are dependent on your success in reconstituting at Ft Meade**