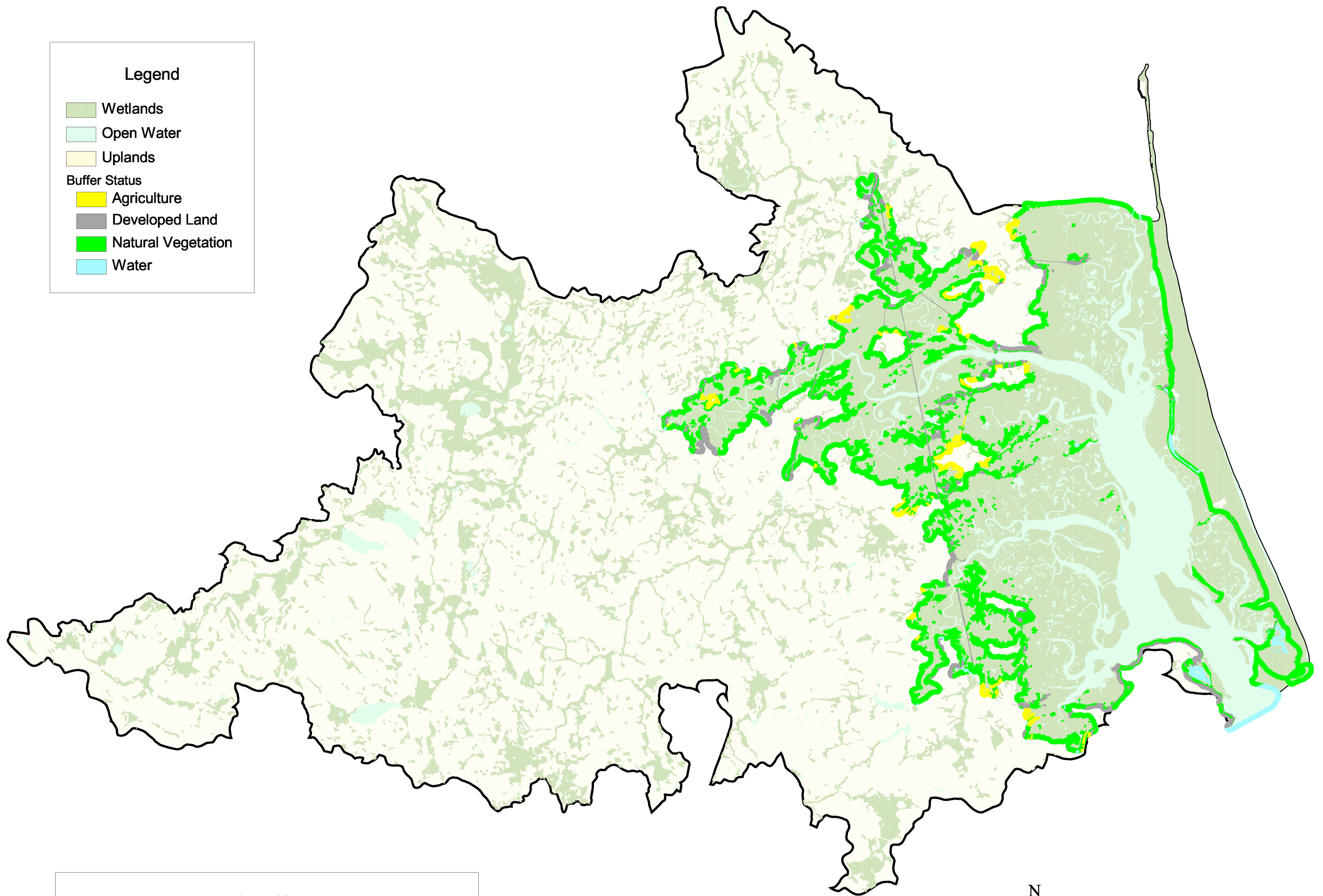
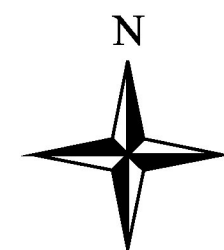
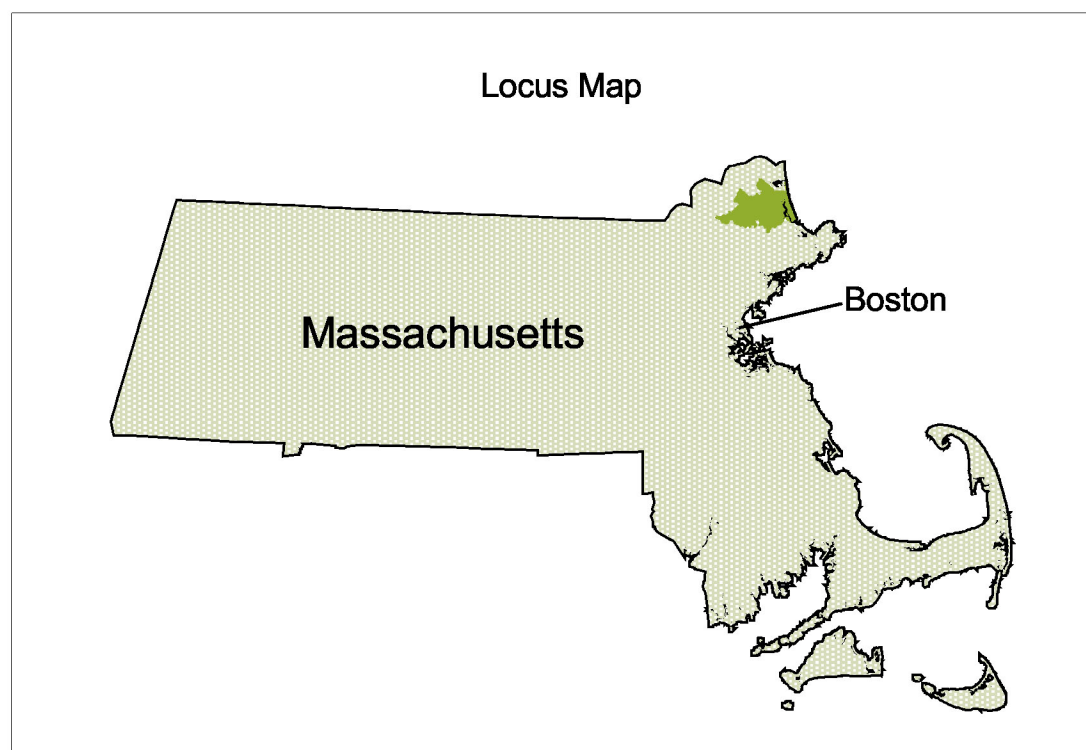


# Condition of the 100m Salt Marsh Buffer in the Parker River Watershed (1999)

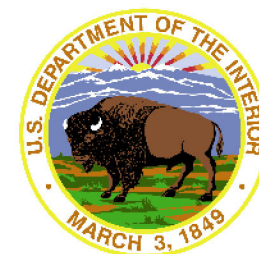


**Legend**

- Wetlands
- Open Water
- Uplands
- Buffer Status**
  - Agriculture
  - Developed Land
  - Natural Vegetation
  - Water



Scale 1:60,000



U.S. Fish and Wildlife Service  
National Wetlands Inventory  
Northeast Region  
300 Westgate Center Drive  
Hadley, MA 01035-9589

